

## North Kingstown School Department – Superintendent Goal Framework (2025–2026)

**Superintendent:** Kenneth A. Duva, Ed.D.

**Aligned to:** NKSD Strategic Plan 2023–2025

**Approval Requested by:** North Kingstown School Committee

---

### Goal 1: Strengthen Academic Achievement and Growth for All Students

**Strategic Priority Alignment:** Improving Student Academic Outcomes & Closing Academic Gaps

**Objective:**

Ensure sustained academic growth in ELA, math, and science while reducing performance gaps for multilingual learners, students with disabilities, and economically disadvantaged students.

**Indicators of Success:** *Based on historical data from 2023 to 2025, targets have been adjusted to account for trends and a more accurate target for 2026.*

- District ELA, math, and science proficiency increases by 6–8% by 2026 (RICAS, PSAT, SAT, NGSA).
  - *ELA: 2-3% increase from 2025*
  - *Math: 1-2% increase from 2025*
  - *Science: 1-2% increase from 2025*
- Multilingual learner English Language Proficiency improves by 3-4% by 2026.
  - *ELA: 1-2% increase from 2025*
- Achievement gaps for students with disabilities and economically disadvantaged students narrow by at least 4–5% annually.
  - *ELA: 2-3% increase from 2025*
  - *Math: 1-2% increase from 2025*
- Full implementation of MTSS data platform and intervention tracking in all K-8 schools by June of 2026.

**Action Steps:**

- Implement and monitor Multi-Tiered Systems of Support (MTSS) across all schools, ensuring consistent use of the district's data platform for intervention tracking.
- Expand professional learning on evidence-based instructional strategies in literacy, numeracy, and science.
  - Engagement in professional learning focused on deep thinking of mathematical learning.
- Review state testing results to identify student learning gaps with our curriculum.
- Conduct mid-year and end-of-year data reviews with principals to measure progress toward proficiency targets and subgroup growth.

**Evidence Sources:**

- RICAS, PSAT, SAT, NGSA, and ACCESS assessment data.
- MTSS platform reports and intervention tracking data.
- District and school improvement plans.
- Professional learning participation records and evaluation feedback.

**Timeline:**

- Mid-year and end-of-year benchmark reports from local assessment data to the School Committee (January and June).
- Final State Assessment Results in October of the following year

## **Goal 2: Advance Equity, Access, and Inclusion Across All Schools**

**Strategic Priority Alignment:** Safe and Supportive Schools

### **Objective:**

Promote equitable outcomes and inclusive practices through data-informed decision-making, family engagement, and targeted professional learning.

### **Indicators of Success:**

- Revise 2-3 policies to create more inclusive practices
- Reduction in disproportionate discipline outcomes and chronic absenteeism to  $\leq 11\%$  by 2026.
- Ensure all school improvement teams have at least 2 parents/guardians to increase family engagement and representation in school advisory and decision-making processes.

### **Action Steps:**

- Revise the Student Conduct Policy, [Summer School Policy](#), and [Student Advisory Council](#)
- Provide Implicit Bias training [for staff](#)
- Strengthen family engagement [by hosting up to 4](#) advisory groups and/or community forums that elevate student and family voice.
- [Use Thrillshare](#) to provide multilingual announcements/communications to non-English speaking families.
- [School-level teams will review chronic absenteeism data monthly, meet with impacted students and their families, and provide support to them to improve attendance.](#)
- [School-level teams will review disciplinary data, set goals for reducing subgroups with disproportionate disciplinary data, and increase the use of alternatives like restorative practices and in-school support systems.](#)

### **Evidence Sources:**

- Discipline, attendance, and participation data.
- SurveyWorks data on belonging, inclusivity, and school climate.
- Family engagement and partnership logs.

### **Timeline:**

- Update of policies by June 2026.
- Mid and end-of-year data review of discipline and attendance
- [Monthly report on Chronic Absenteeism - RIDE Attendance Dashboard](#)

### Goal 3: Foster Safe, Supportive, and Connected School Communities

**Strategic Priority Alignment:** Safe and Supportive Schools

**Objective:**

Cultivate environments that prioritize safety, social-emotional wellness, and staff-student connectedness.

**Indicators of Success:**

- **9% increase** in SEL favorability results on SurveyWorks by 2026. (Spring of '23 School Belonging 61% grades 3-5, and 27% grades 6-12)

○

School Belonging	Spring 25	Goal Spring 26	Increase
Grades 3-5	66%	70%	+4%
Grades 6-12	38%%	36%	maintain

- Implementation of a PreK–12 social-emotional learning continuum and PBIS framework in all schools by June 2026.
- All administrators and safety operations personnel will be trained in ALICE protocols by January 2026.

**Action Steps:**

- Implement the districtwide SEL continuum and PBIS framework, including building-level goals and monitoring systems.
- Complete ALICE training for all administrators and update district and school emergency operations plans.
- Analyze student and staff climate data annually (SurveyWorks) to guide improvements in connectedness and belonging.

**Evidence Sources:**

- SurveyWorks and SEL data.
- PBIS and SEL implementation reports.
- ALICE training records.

**Timeline:**

- SEL continuum and PBIS systems operational by June 2026.
- ALICE training completion by January 2026.

## **Goal 4: Develop and Implement a Vision of the Learner (VoL) Framework**

**Strategic Priority Alignment:** Vision of the Graduate

**Objective:**

Define and implement the essential skills, learning progressions, and assessments that represent NKSD's vision for college, career, and life readiness.

**Indicators of Success:**

- Vision of the Learner Competencies finalized and adopted by October 2025.
- Pilot learning progressions aligned to essential skills by June 2026.
- Pilot project-based learning activities aligned to the VoL by June 2026.
- Vision of the Learner is integrated into at least 2 curriculum areas, professional learning, and evaluation systems.

**Action Steps:**

- Student-led professional learning with all staff on VoL competencies by Nov 2025
- Develop learning progressions aligned to the essential skills identified in the VoL.
- Select teachers to pilot learning progressions in their classrooms
- Support project-based learning activities when implemented in pilot classrooms

**Evidence Sources:**

- Approved Vision of the Learner document.
- Curriculum alignment and professional learning records.
- Evidence from walkthroughs, curriculum audits, and instructional observations.

**Timeline:**

- VoL competencies finalized by October 2025.
- Learning progressions are complete by June 2026.
- Pilot alignment across curriculum and assessments by June 2026.

## **Goal 5: Modernize and Align School Facilities to Support 21st-Century Learning**

**Strategic Priority Alignment:** School Facilities

**Objective:**

Ensure that district facilities meet modern learning standards, align with the Vision of the Graduate, and reflect fiscal responsibility and community collaboration.

**Indicators of Success:**

- Successful completion of Stage II RIDE approval and continued progress on the new Wickford Middle School project.
- Implementation of the \$141M Capital Improvement Plan through Stage III.
- Transparent community communication (public forums, updates, website resources) on facilities progress.
- Long-term facilities plan aligned to educational vision completed by July 2026.

**Action Steps:**

- Completion of identified CIP projects for 25/26 SY
- Approval of Stage II with RIDE
- Oversee the RFP, selection, and preconstruction phases for the Procurement Process for the Wickford Middle School project.

- Successful submission and approval of Stage III with RIDE
- Collaborate with the School Building Advisory Committee to develop a long-term facilities vision that aligns physical learning environments with the district's educational and equity priorities.

#### Evidence Sources:

- RIDE Stage II and Stage III documentation and project approvals.
- Facilities project reports and budget tracking.
- School Building Subcommittee and community engagement records.
- Annual facilities and capital project updates to the School Committee.

#### Timeline:

- Construction milestones and community reporting through June of 2026.

#### Strategic Priority Alignment: School Facilities

##### Objective:

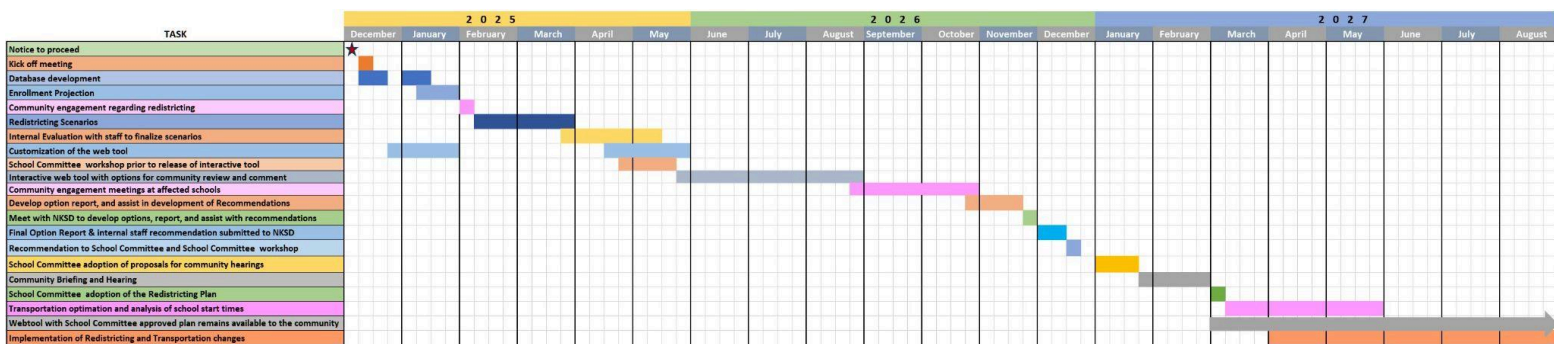
North Kingstown Administration will work with school community stakeholders to make a recommendation for school redistricting, school start times, and transportation to the School Committee by March 2027, for implementation in the 2027–2028 school year. [By June of 2026, the advisory committee will have collaborated with the consultant to draft preliminary redistricting scenarios as well as preliminary research on school start times.](#)

#### Indicators of Success:

- A comprehensive data-driven analysis of enrollment and capacity will be completed by [Spring 2026](#).
- [By June 2026](#), stakeholder engagement sessions [will be](#) conducted with staff, families, and community members, with feedback integrated to begin recommendations.
- [A draft of](#) equitable redistricting scenarios will be developed that balance enrollment, maintain neighborhood integrity, and optimize resources [by June 2026](#).
- [Preliminary research on school](#) start times, including student wellness and logistical feasibility, [will be reviewed by the advisory committee by June 2026](#).

#### Action Steps and Timeline:

- [CityGis Timeline](#)



#### Evidence Sources

- Enrollment projections and demographic reports
  - School capacity/utilization reports
  - Stakeholder feedback summaries (surveys, forums, focus groups)
  - Meeting agendas and minutes of the Redistricting Steering Committee
  - Draft redistricting/start time maps and models
  - Advisory Committee and School Committee presentations
- 

## **Monitoring & Reporting**

The Superintendent will:

- Provide biannual progress reports on goals to the School Committee (January and June).
- Use data reports and reflection summaries to communicate outcomes.
- Align superintendent evaluation goals with progress toward strategic plan priorities.