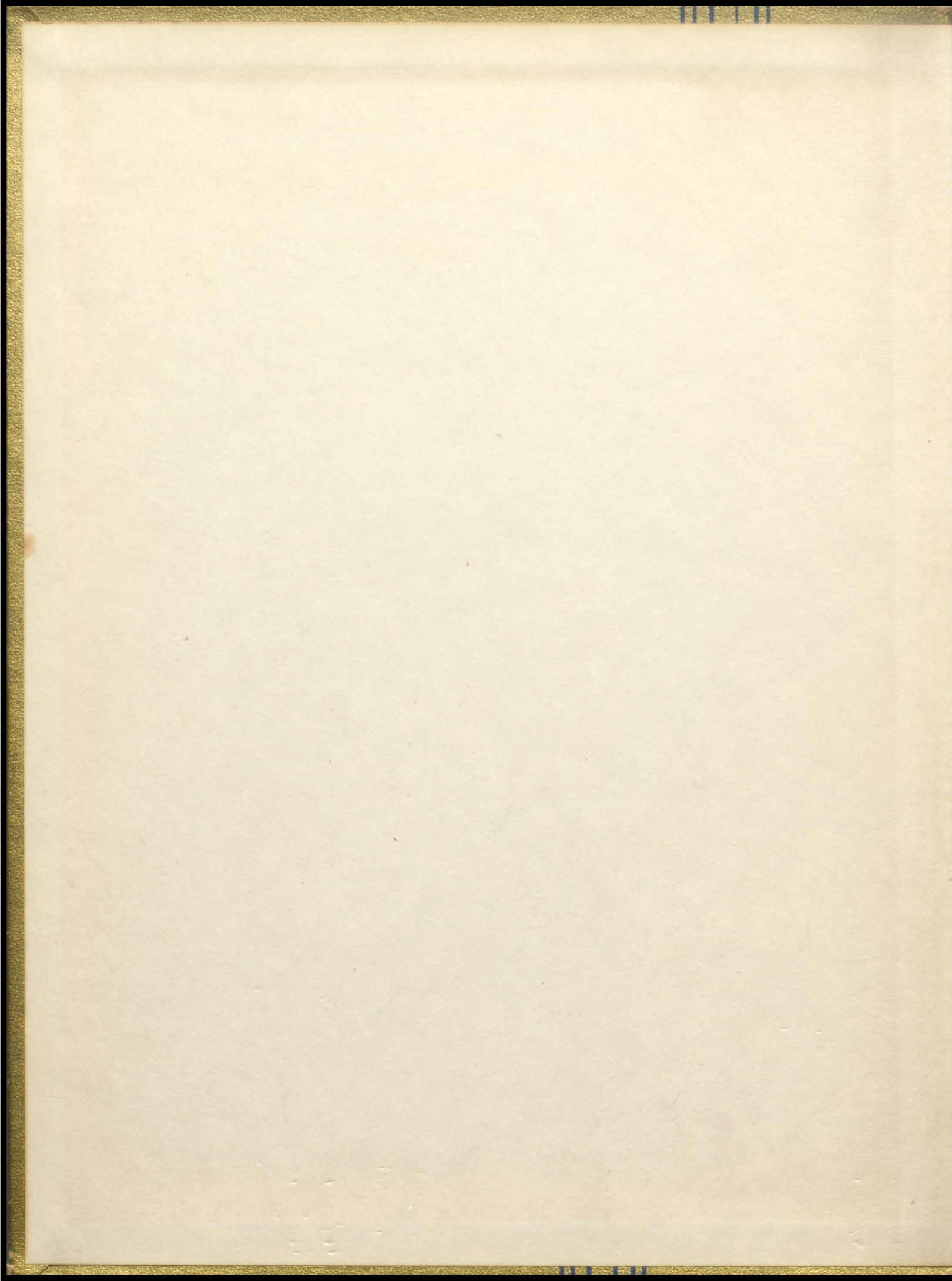


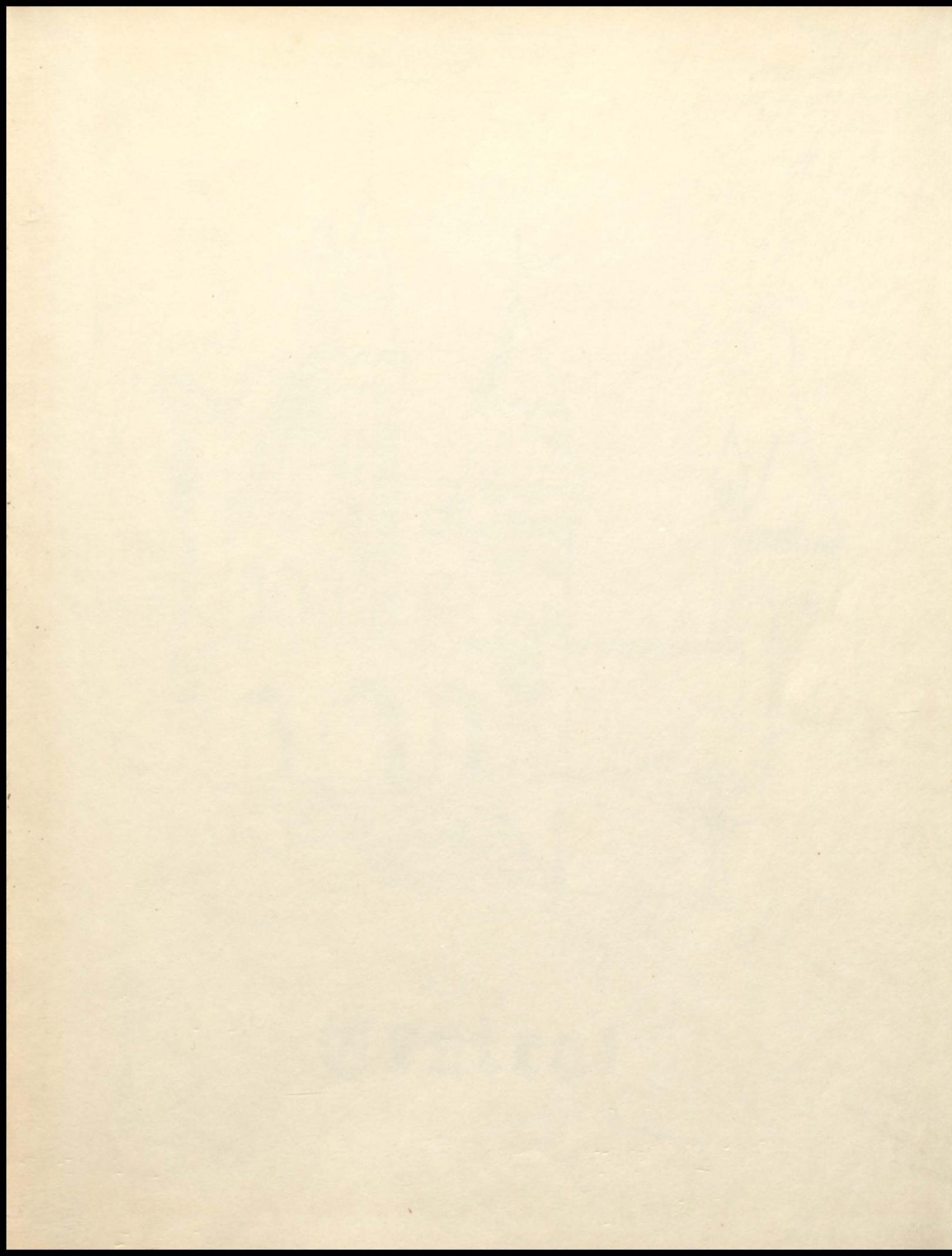
III  
THE  
III  
CENTRALIAN



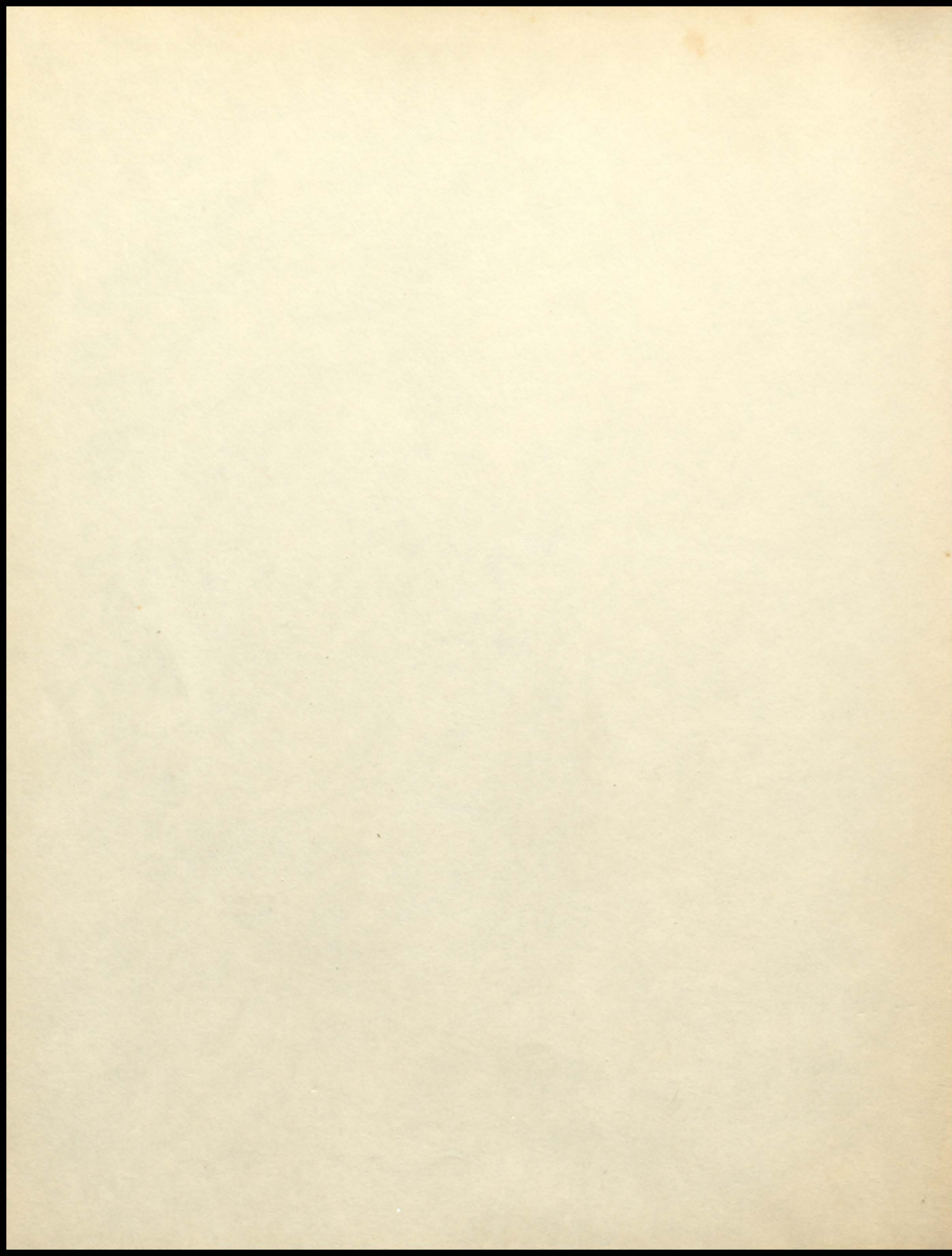
19 |||| 58















Central



## KING

HOWARD G. PETERSON  
Superintendent



## BARON

RUDOLF G. MAURINE  
Principal



### BOARD OF EDUCATION

Mr. Arthur J. Buegel

Mr. John A. Fahey

Mr. Earl Smith

Mr. Eugene Shima

Mr. J.J. Thomas

Mr. Charles L. Boyle





CHARLES ANDERSON  
Biology; Chemistry; Physics.



BARBARA BECKRICH  
Business Law; Class Play; Bookkeeping;  
General Business; Annual Advisor.

## NOBLES

DUANE BJERKE  
Social Studies;  
Freshman Advisor;  
English.



EDGAR BRAUN  
Social Studies;  
American History;  
Coach.



CORA HENDRICKSON  
Home Economics; Junior Advisor.

PHYLLIS HORN  
Physical Education; G.A.A.;  
Cheerleader Advisor; Dramatics.







JOHN KRESS  
Junior High Social Studies; English;  
Assistant Coach; Football; Basketball.



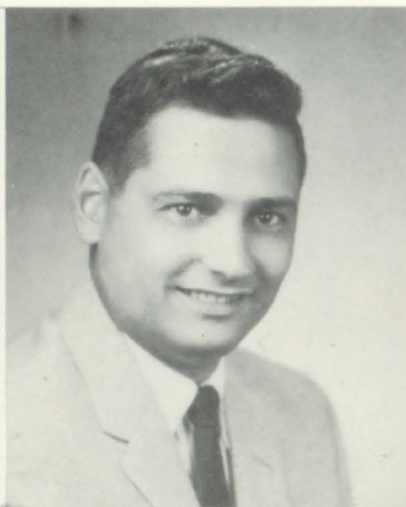
JOAN McAFEE  
Spanish I & II; World History; F.T.A.;  
Spanish Club; Class Play.

## NOBLES

LOREN McGILVRA  
English; Librarian



ROBERT MELENICH  
Physical Education;  
Basketball Coach.



RICHARD MURPHY  
English; Junior Advisor.

ROLAND RANZINGER  
General Science; English; Mathematics;  
School Patrol.







OSKAR SASSIAN  
Math; Geometry; Algebra.



RONALD SCHROER  
Band; Glee Club; Junior High Band  
Instructor.

## NOBLES

LOREN SWEDELIUS  
Steno I & II; Typing;  
Smoke Signals Advisor.



CLIFFORD THORESON  
Agriculture; F.F.A.  
Advisor.



LEN TURULA  
Industrial Arts; Junior Advisor.

BERNADINE MEYER  
School Secretary.







KAY EGGLESTON  
Grade 1



JEAN MELENICH  
Grade 2



MARIE ROHLING  
Grade 3

## NOBLES



ROSAMOND STIEWE  
Grade 4



OTHMAR ROHLING  
Grade 5



ALBY SCHROEDER  
Grade 6; Elementary Principal



MRS. W.W. GOOD  
Kindergarten





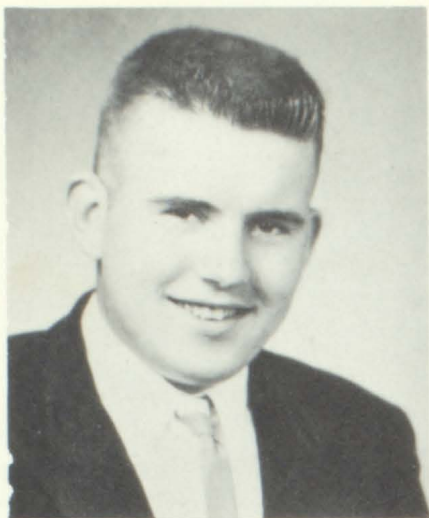
# Enlighten and Save



T. KLOBE



# SENIORS



JAMES BERGMANN  
 "Girls are a nuisance."  
 Football; Basketball; C Club.



JOYCE BERGMANN  
 "Like a teakettle, she's always  
 bubbling over."  
 Spring Concert; Variety Pro.;  
 G.A.A.; Glee Club; Office  
 Assistant; Librarian; Junior Play;  
 Centralian; Pep Club; Smoke  
 Signal.



GORDON BOELKE  
 "Do you mean there's another car  
 besides the Nash?"  
 Band; Band President; Basketball;  
 Student Director; Class Secretary 4.

LYLE BOHNEN

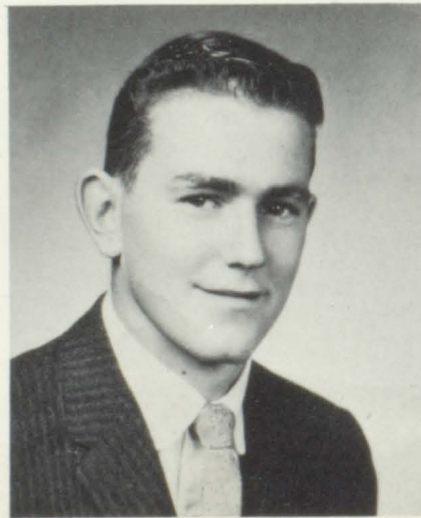
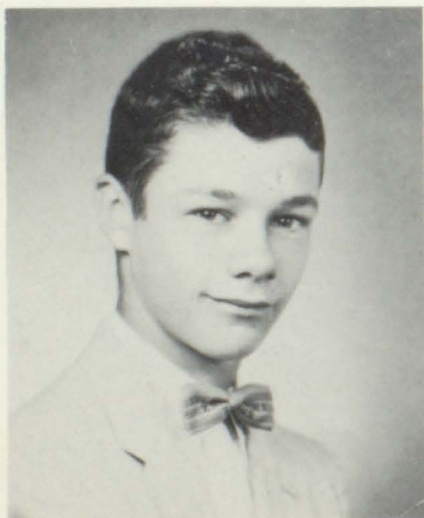
"Little wheel in high gear."  
 Football; Football Manager; C Club;  
 Smoke Signal; Declam; Centralian;  
 Pep Club.

WAYNE BONGARD

"If there's a pickle, I'll be in it."  
 Football; Baseball; Basketball;  
 Mixed Chorus; Homecoming Escort;  
 Pep Club; Student Manager.

BARBARA BOYLE

"Her smile says 'Hello' also betrays  
 her mischievous manner."  
 Centralian; Pep Club; Sextette;  
 Smoke Signal; Christmas Concert;  
 Glee Club; Spring Concert.





# SENIORS



EUNICE BUCKENTINE

"Always quiet, always kind; a better friend you will never find."  
Glee Club; Centralian; Christmas and Spring Concert.



THOMAS BURY

"He'll probable die from lint in his stomach, judging from the way he chews the rag."  
Class President 3; Smoke Signal; Football; Co-Captain; Baseball; Basketball; Band; Junior Class Play; Spanish Club; All-Conference.



KAREN BUSS

"The cream of the crop."  
Band, Treasurer, Librarian; Tramp Band; Pep Club; Glee Club; Spring and Christmas Concert; Smoke Signal; Centralian; Girls State Alternate; Spanish Club; F.T.A.

SUSAN CLAY

"Nature smiled at her."  
Band, Secretary and Student Director; Smoke Signal; Assistant Editor and Co-Editor; G.A.A. Centralian; Cheerleader; Class President 1; Christmas and Spring Concert; Librarian; Pep Club; Spanish Club; Projectionist Club; F.T.A.; Homecoming Attendant 2; Homecoming Queen.

WILLIAM BUSSMANN

"Missed that stop-sign, I'll stop twice for the next one."  
Football; Basketball; Baseball; Spanish Club; Homecoming Attendant 3, 4.

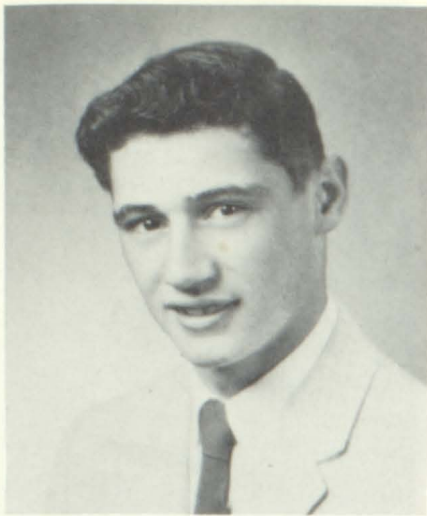
JAMES EFFERTZ

"Like a clock's hour hand, it takes him awhile, but he gets around."  
Basketball; Baseball; C Club.



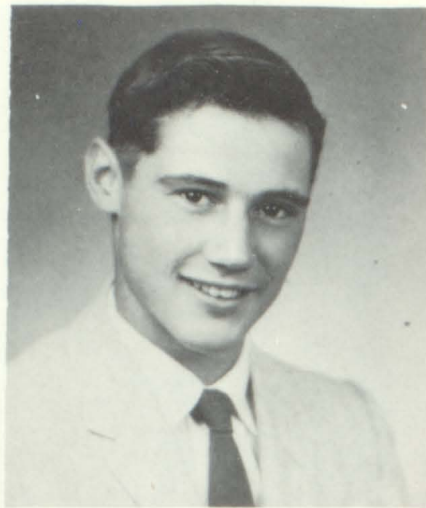


# SENIORS



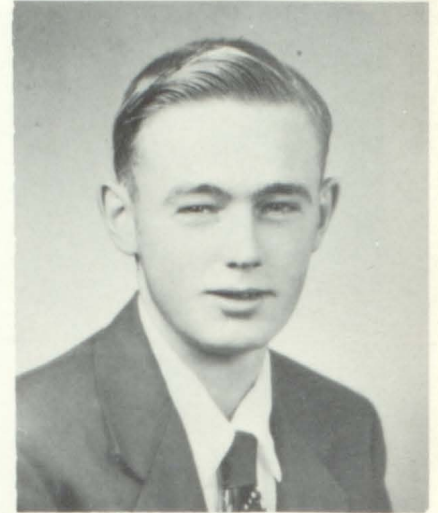
DERALD FELTMANN

"If only I didn't have to carry that club to beat off the girls."  
Football; Baseball; Basketball;  
Homecoming Escort 1, 4; C Club.



GERALD FELTMANN

"Chase me girls, I'M full of fun."  
Football; Baseball; Basketball;  
F.F.A.; Homecoming Escort 4;  
C Club; Smoke Signal; All-  
Conference 4.



GENE FORT ENGLER

"Quiet, I'M thinking."  
Junior Class Play; F.F.A.

DORIS FRANCK

"She's little, but so is a stick of dynamite."  
Mixed Chorus; Band; G.A.A.;  
Smoke Signal; Centralian; Cheer-  
leader; Majorette; Pep Club; Home-  
coming Attendant 1, 4; Junior Play;  
Spanish Club; Christmas Concert;  
Variety Pro.; Spring Concert.

ANNELY FRUETEL

"Never posing or pretending, but herself."  
Band; Pep Club; G.A.A.; Mixed  
Chorus; Glee Club; Smoke Signal;  
F.T.A.; Spanish Club.

KAREN HAPP

"Poise, Personality, and a perpetual smile."  
Glee Club; Swing Band; Spanish  
Club; Band Librarian; Christmas  
Concert; Tramp Band; Smoke  
Signal; Pep Club; Centralian;  
Mixed Chorus; Spring Concert;  
G.A.A.; Assistant Editor 3; Co-  
Editor 4; Band; Sextette; Band;  
Junior Play Make-up; Variety  
Program.



# SENIORS



BRUCE HEBEISEN

"Not only good, but good for something."

Student Council; Pep Club; Centralian Co-Editor; Spanish Club; Football; Junior Class Play.



JAMES HEDTKE

"The man behind the man who stands in front of the broom."

F.F.A.



JOANNE HEDTKE

"The highest degree of earthly happiness is quietness."

Centralian; Smoke Signal; Band.

MARY HEDTKE  
"Silence is the perfect harold of joy."  
Smoke Signal.



CLARA HEINISCH

"When do we eat?"

G.A.A.; Junior Class Play Prompter; Office Assistant; Mixed Chorus; Pep Club; Smoke Signal; Assistant Editor and Co-Editor; Centralian; Declam; Spanish Club.



ARDIS HILGERS

"As happy-go-lucky as a summer breeze."

Smoke Signal; Pep Club; Librarian; G.A.A.; Glee Club; Christmas and Spring Concert.





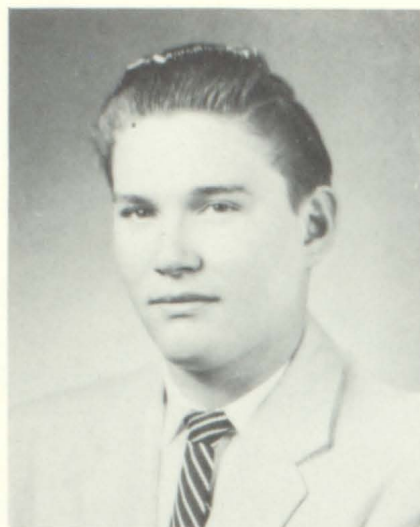
# SENIORS



BARBARA HOBERG

"I'm the only one of my friends  
I can rely on."

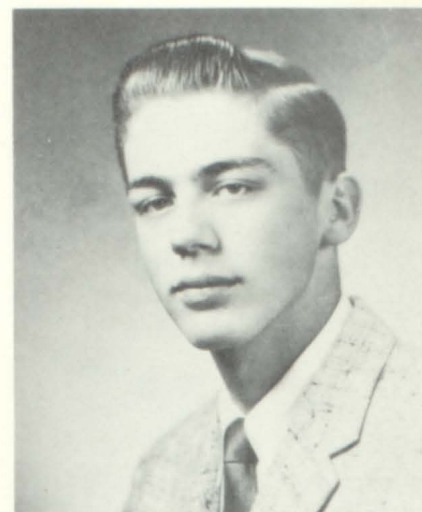
Librarian; Office Assistant; G.A.A.;  
Spanish Club; Mixed Chorus; Junior  
Play; Smoke Signal; Vice-President;  
Declam; F.T.A.



ROBERT JOOS

"He's like a grapefruit-there's  
more there than meets the eye."

Football; All-Conference 4;  
Basketball; Baseball; C Club; Pep  
Club; Centralian; Homecoming  
Escort 4; Smoke Signal.



LARRIUS KAMANN

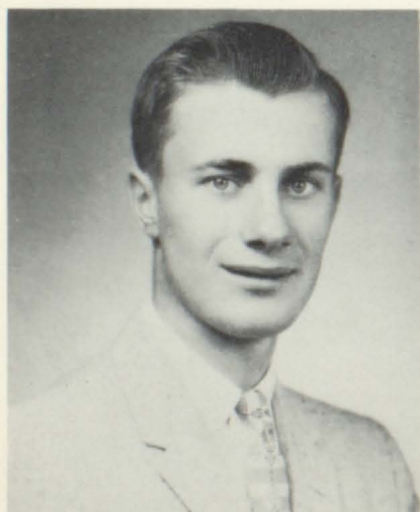
"Women? Oh no, I came here for  
an education."

Football; F.F.A., F.F.A. Reporter;  
Basketball.

KENNETH KARNITZ

"I may be quiet in school, but  
that doesn't mean much."

Football; F.F.A.



MELVIN KLAUSTERMEIER

"Don't look at me girls, I'm  
bashful."

F.F.A., F.F.A. Treasurer.



SHIRLEY KLAUSTERMEIER

"It's better for a girl to blush than  
to turn pale."

G.A.A.; Glee Club; Pep Club;  
Centralian.



# SENIORS



THOMAS KLOBE

"An artist by nature."  
Junior Class Play; Centralian;  
Spanish Club.



JOANN KUGATH

"Studios, but full of fun; she has  
a smile for everyone."  
Band, Vice-President Tramp Band;  
Student Council; Pep Club;  
Librarian; Glee Club; Christmas  
and Spring Concert; Smoke Signal;  
Centralian; Girl's State; Spanish  
Club.



RODNEY KUNTZ

"I don't want to be President  
because there is no room for  
advancement."  
Centralian; Boy's State Alternate.

BARBARA LEIKAM

"She likes to study-study a good  
time."  
Homecoming Attendant 4; Spanish  
Club; Junior Class Play; Cheer-  
leader; Pep Club; Centralian;  
Smoke Signal; Declam; G. A. A.;  
Christmas and Spring Concert;  
Band; Majorette.



LaJEAN LEMKE

"She puts all her troubles in a box,  
sits on the lid and laughs."  
Pep Club; Glee Club; Band;  
Centralian; Smoke Signal;  
Christmas and Spring Concert;  
Librarian; Girl's State Delegate.



LEROY LEMKE

"Walks as though he's going to a  
fire; drives as though he started  
one."  
F. F. A.; Projectionist Club;  
Football.





# SENIORS



LOIS LEMKE

"Prim, neat, short, and sweet."  
Class Treasurer; Pep Club; Librarian; Junior Class Play Prompter; Smoke Signal; Christmas and Spring Concert; Centralian.



ROGER LINDEMEIER

"Sometimes I sit and think, sometimes I just sit."  
Football; Basketball; F.F.A.



PAULINE LOUIS

"The only way to have a friend is to be one."  
Pep Club; G.A.A.; Smoke Signal; Librarian; Homecoming Attendant 4; Centralian; Junior Class Play; Class Secretary 1.

WILLIAM MENTH

"I rise from bed in the morning, not because I'm dissatisfied with it, but because I can't carry it with me during the day."



MARY MESENBRING

"Little deeds of kindness helps make the world happier."  
Band Treasurer; Band; Tramp Band; Glee Club; Centralian Co-Editor; Smoke Signal; F.T.A.; Vice-President and President; Librarian; Pep Club; Junior Class Play; Girl's State Alternate; Spanish Club.



DENNIS MIELKE

"If you want to forget your troubles wear tight shoes."  
Football; Basketball; Baseball; F.F.A.; Junior Class Play; Smoke Signal; Spanish Club.



# SENIORS



SANDRA MILBRADT

"A cheerful countenance betokens a good heart."  
Christmas Concert; Spring Concert; Librarian; Glee Club.



DEANNA PAWELK

"She led a cheer throughout the year."  
Glee Club; Cheerleader; Smoke Signal; Pep Club; Homecoming Attendant 3, 4; Centralian; Christmas Concert; Spring Concert.



MARY SALDEN

"The only time she is quiet is when she has laryngitis."  
G.A.A.; Junior Play; Pep Club; Smoke Signal; Centralian; Librarian.

ALVIN SAUTER

"It isn't what we do, it's what we get away with."  
Football; Baseball; C Club; Basketball; Spanish Club; Student Council; Centralian.



KATHERINE SCHOEWE

"Restless as a windshield wiper."  
Centralian; Smoke Signal; Librarian F.T.A.; Glee Club; Pep Club; Mixed Chorus.



MAXINE SCHRUPP

"No use worrying about life, because you never get out of it alive."  
G.A.A.; Smoke Signal; Mixed Chorus; Centralian; Sextette; Christmas Concert.





# SENIORS



ROBERT STOLZ

"Don't disput me....the books wrong."

Football; Baseball; Pep Club; Basketball; Junior Play; C Club; Secretary-Treasurer.



RONALD STREI

"Who's the best guy here, and why am I?"

Football; Basketball; C Club; Baseball; F.F.A.; Junior Play M.C.



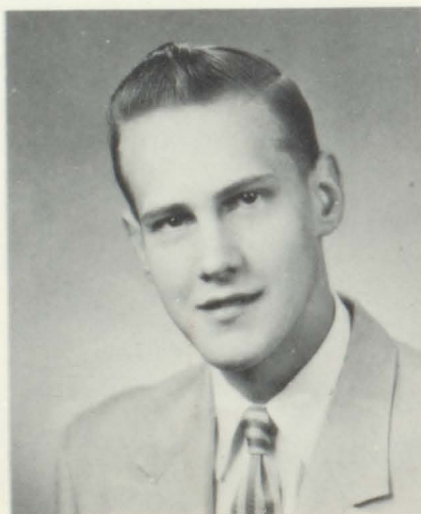
DENNIS STUEWE

"A football hero who never says die; a handsome lad, but oh so shy." Football; Baseball; C Club; Football Co-Captain; Basketball; All-Conference 3, 4; Homecoming King; F.F.A., F.F.A. Sentinel.

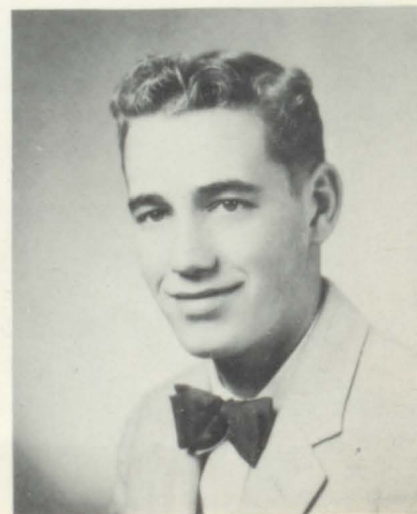
KATHLEEN STUEWE  
"Everybody can't grow red hair."  
Glee Club; Christmas Concert;  
Spring Concert.



DARVID THOELE  
"There must be a lot of work in him for none has ever come out."  
Junior Play Manager; Centralian.



EDWIN VOLLRATH  
"And if I'm elected"-And he was."  
Baseball; Basketball; Student Council; Secretary-Treasurer 3; President 4; F.F.A.; Spanish Club.



# SENIORS



LILA WERNER

"The kind of person you like to know."

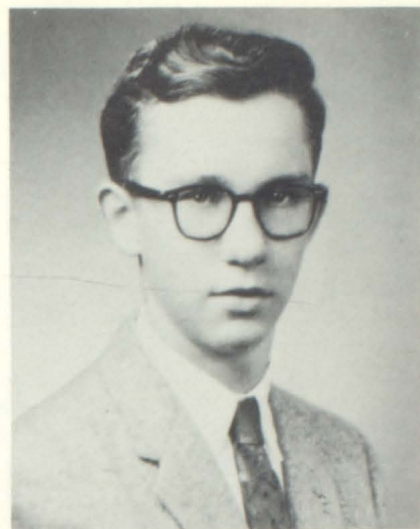
Centralian; Glee Club; Christmas and Spring Concert; Glencoe 1, 2.



HARLAN WERTH

"The race through life is like racing a train to a crossing - if it's a tie, you lose."

Glencoe High 1, 2, 3; F.F.A.



RONALD WICHELMANN

"Love is too simple a game for a brainy man to indulge in."

Class Vice-President 3; Centralian.

DIANNE WILL

"She likes pleasure, she likes fun, she'd amuse most anyone."

Glee Club; Mixed Chorus; Office Assistant; Junior Class Play; Centralian; Smoke Signal, Assistant Editor and Co-Editor; F.T.A.; G.A.A.; Pep Club; Librarian; Christmas and Spring Concert.

JOYCE WILLEMS

"A gal with sense and some nonsense."

Centralian; Smoke Signal; Pep Club; Junior Class Play; G.A.A.; Declam; Band; Spanish Club; Christmas and Spring Concert.

WERNER WILLEMS

"He shares his smile with everyone." Football; Basketball; Baseball; F.F.A., President, Vice-President.





# SENIORS



DARWIN QUAST

"School breaks up the day so much."



DARLENE WOLTER

"If giggles were unlawful I'd spend the rest of my life in jail."

Glee Club; Centralian; G.A.A.;  
Pep Club; Smoke Signal; Librarian;  
Spring and Christmas Concert.



CAROLYN ZELLMANN

"You have to laugh and talk to make life complete."

Pep Club; F.T.A.; G.A.A.; Glee  
Club; Mixed Chorus; Smoke Signal;  
Centralian; Junior Class Play;  
Librarian.

EDGAR ZELLMANN

"I fell on my head, but it didn't affect me a bit-didn't affect me a bit-didn't affect me a bit."

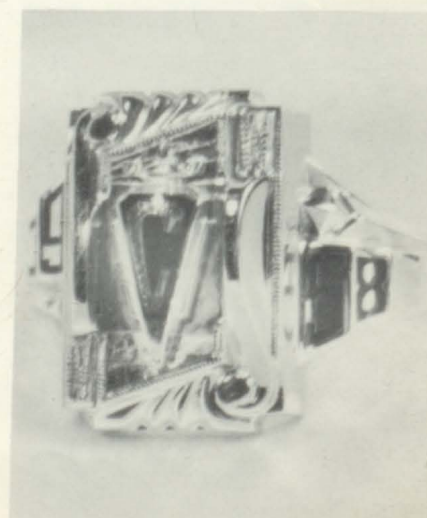
Basketball; Baseball; Centralian.



CLASS COLORS  
Blue and Gold

CLASS FLOWER  
Yellow tearose

CLASS MOTTO  
With the ropes of the past,  
we'll ring the bells of the  
future.



# PREDICTIONS

NAME	INTENDS TO BE	BUT BECOMES
James Bergmann	Construction Worker	Football Coach at Central
Joyce Bergmann	Airline Stewardess	Embalmer
Gordon Boelke	Farmer	Stamp licker for Postal Dept.
Lyle Bohnen	Construction Worker	Extra for Dave Garraway's monkey
Wayne Bongard	Undecided	Another Dior
Barbara Boyle	Secretary	Jet Pilot
Eunice Buckentine	Office Worker	Alligator Wrestler
Tom Bury	Undecided	Ballet Dancer
Karen Buss	Teacher	Shoestring purchaser for President
Bill Bussmann	College Student	Chief pincher of speedsters
Susan Clay	Teacher	Taxi driver
James Effertz	Engineer	Designer of Ford's
Derald Feltmann	Truck Driver	Promoter of Etiquette
Gerald Feltmann	Air Force	Author of "My True Story"
Gene Fortwengler	Farmer	Liberaces' candelabra lighter
Doris Franck	Secretary	Window cleaner of sky scraper
Annely Fruetal	Teacher	Model
Karen Happ	Nurse	Sax player for Lawrence Welk
Bruce Hebeisen	Engineer	Under cover agent
James Hedtke	Office Worker	Writer of a lovelorn column
Joanne Hedtke	Stenographer	Wife of a President
Mary Hedtke	Secretary	Elvis Presley's guitar cleaner
Clara Heinisch	Nurse	Actress
Ardis Hilgers	Medical Technician	Boy's Physical Education teacher
Bob Joos	Undecided	Marriage Counselor
Larrius Kamann	Air Force	Big game hunter
Kennith Karnitz	Farmer	Nuclear Physicist
Melvin Klaustermeier	Carpenter	Brain Surgeon
Shirley Klaustermeier	Bookkeeper	Government worker
Tom Klobe	Commercial Artist	Jail Suit designer
Joann Kugath	Nurse	First Woman President
Rodney Kuntz	Carpenter	African adventurer
Barbara Leikam	Nurse	Cover girl
Leroy Lemke	Air Force	W.A.C. Drill Instructor
Lois Lemke	Secretary	Flea catcher for flea circus
Roger Lindemeier	Navy	Chief potato peeler for WAVES
Pauline Louis	Medical Secretary	Librarian
Billy Menth	Truck driver	Operator of Modeling School
Mary Mesenbring	Teacher	Annual Advisor at Central
Dennis Mielke	College Student	Authority on the Spanish language
Sandra Milbradt	Stenographer	Head of Safari to Africa
Deanna Pawelk	Airline Stewardess	Gunny sack dress designer
Darvin Quast	Undecided	Inventor of no smear lipstick
Mary Salden	Medical Secretary	Author of "Modern Methods of Flirtation"
Alvin Sauter	Undecided	Authority on gas problems
Katherine Schoewe	Airline Stewardess	Inventor of new fertilizer
Maxine Schrupp	Office Worker	German teacher
Bob Stolz	Navy	Winner on \$64,000 question
Ronald Strei	Truck driver	Tough sergeant
Kathleen Stuewe	Beautician	First Woman to reach Mars
Dennis Stuewe	Carpenter	Minnesota Gopher's star
Darvid Thoele	Automotive Engineer	Chevrolet designer
Edwin Vollrath	Electronics Engineer	Most Eligible Bachelor of 1999
Lila Werner	Secretary	Script writer for Jerry Lewis
Ronald Wichelmann	Photographer	Juvenile Delinquent Authority
Dianne Will	Beautician	School secretary at Central
Joyce Willems	Nurse	Disc jockey
Werner Willems	Navy	Lumberjack
Darlene Wolter	Beautician	English professor
Harlan Werth	Air Force	Deep sea diver
Carolyn Zellmann	Secretary	Tobacco auctioneer
Edgar Zellmann	Air Force	Shakespearean Actor



# Tales of '58 .

We started out with 73 pilgrims in a company of sundry folk, by chance together there, in fellowship; and pilgrims too, they were, that on to Central meant to ride.

Our Freshmen royalty included Susan Clay, President; Gerald Feltmann, Vice-President; Pauline Louis, Secretary; Lois Lemke, Treasurer. Our Class Princess was Doris Franck and our Prince was Derald Feltmann. The Sophomores initiated us, as green Freshmen, and in return we gave them a roller skating party.

We continued our pilgrimage and 65 pilgrims marched into the Sophomore year. The rooms were spacious and the halls wide, and comfortable indeed we all were made. Our Sophomore year was governed by Joanne Kugath, President; Dennis Mielke, Vice-President; Robert Stolz, Secretary; Ronald Strei, Treasurer. Our Prince and Princess were Wayne Bongard and Susan Clay. As the year rolled on, we had the great pleasure of initiating the Freshmen and in return the Freshman gave us a dance.

Now, while we still have the time and space, we think it only reasonable and fair to tell you what happened in our Junior year. There were 62 students returning for the third pilgrimage. Our Junior royalty included: Tom Bury, President; Ron Wickelmann, Vice-President; Edwin Vollrath, Secretary-Treasurer. The Prince and Princess for the Junior year were William Bussmann and Deanna Pawelk. On April 25 and 26, 1957, we presented "Old Doc" as our class play under the leadership of Mr. Galvin. To close our Junior year, we gave a Prom for the Senior Class with a "Hawaiian Cruise" theme.

Now we beg all those who hear or read this little treatise to thank our Senior class, from whom comes all wit and all goodness, for anything in it which pleases them. The class leaders for this year included: Edwin Vollrath, President; Barbara Hoberg, Vice-President; Gordon Boelke, Secretary-Treasurer. Our 1958 Senior Class Play was presented on April 17 & 18. Our 1957 Homecoming King and Queen were Dennis Stuewe and Susan Clay, respectively. The leaders of our pilgrimage this year were Mr. Maurine.

Our pilgrimage ended May 26, 1958, and here the 64 makers of this book take their leave.



# Last Will and Testament

JAMES BERGMANN wills his studying ability to Arlo Gutknecht. JOYCE BERGMANN wills her neat appearance to Elizabeth Wolter. GORDON BOELKE wills his dancing ability to Bobby Fiebelkorn and Larry Heuer. LYLE BOHNEN wills his job as water boy to Myra Hedtke. WAYNE BONGARD wills his good selection of clothes to James Cordell and Gene Mielke. BARBARA BOYLE wills his joke telling to Sylvia Klostermeier and Estella Schuette. EUNICE BUCKENTINE wills her cute dimples to Lee Gutknecht. THOMAS BURY wills his last minute rush to Mary Franck. KAREN BUSS wills her ability to stick to one steady to Joyce Ziermann and Shielah Zabel. WILLIAM BUSSMANN wills his bashful ways to Ray Zellmann and Donna Schrupp. SUSAN CLAY wills her Homecoming Crown to the most deserving Junior girl. JAMES EFFERTZ wills his free time to Beverly Schepers. DERALD AND GERALD FELTMANN wills their many identical traits to Judy and Joy Menden. GENE FORT-WENGLER wills his cowboy boots to Hubert Mueller. DORIS FRANCK wills her fun at dances to Lowell Wolter and Karen Kohls. ANNELY FRUETEL wills her freckles to JoAnn Storms. KAREN HAPP wills her ability to Laugh to Karen Keefer and Dianne Pawelk. BRUCE HEBEISEN wills his ways of irritating people to Elaine Rolf and Karen Stuewe. JAMES HEDTKE wills a few extra pounds to Gerald Roepke and Dennis Bonderson. JOANNE HEDTKE wills her shyness to Dallas Schneider and Eugene Schrupp. MARY HEDTKE wills her Elvis Presley pins to Marlene Fourtengler. CLARA HEINISCH wills her love of teasing to Clarence Maschke and Margaret Lobitz. ARDIS HILGERS wills her jokes to Joyce Zimmermann and Charles Schroeder. BARBARA HOBERG wills her "Blue Mondays" to Dale Strei and Betty Schroeder. ROBERT JOOS wills her ability to give Mr. Braun all the answers to what ails the football team to Gerry Raedeke. LARRIUS KAMANN wills his bright sparkling eyes to Dorothy Gruenhagen. KENNETH KARNITZ wills his height to Dorine Gruenhagen. MELVIN KLAUSTERMEIER wills his quiet ways to Clark Fischer. SHIRLEY KLAUSTERMEIER wills her peppy ways to Elizabeth Tellers. THOMAS KLOBE wills his artistic ability to George Groenke and Harold Hoernemann. JOANNE KUGATH wills her many brains to David and Roger Eggert. RODNEY KUNTZ wills his bookkeeping abilities to JoAnn Stender. BARBARA LEIKAM wills her cheerleading outfits to John Bergmann. LaJEAN LEMKE wills her typing ability to Gloria Roepke. LEROY LEMKE wills his class ring to Geraldine Herrmann. LOIS LEMKE wills her chemistry workbook to Sharon Noerenberg and Renata Kamps. ROGER LINDEMEIER wills his ability to destroy things to Charles Stender and Ralph Unglaub. PAULINE LOUIS wills her Steno classes to Jolene Hoernemann. BILLY MENTH wills his motorcycle to John Graupmann and Dennis Buehler. MARY MESENBRING wills her dependability to Joyce Diedrich and Gloria Gohlke. DENNIS MIELKE wills his pretty blue eyes and flirtacious ways to Roger Kramer. SANDRA MILBRADT wills her pierced ears to Patty Flannery and Marlene Goede. DEANNA PAWELK wills her pink tinted hair to Faye Pieper and Corrine Radtke. MARY ELLEN SALDEN wills her continuous flow of conversation to LuAnn Baumann. ALVIN SAUTER wills his trips to the Valley to Jack Noening and Roger Hilgers. KATHERINE SCHOEWE wills her popularity to Marlene Jaeckel and LaVonne Kamps. MAXINE SCHRUPP wills her late hours to Warren Flusemann and LaJean Stahlke. ROBERT STOLZ wills his clever remarks to Gene Goede and Diane Barlau. RONALD STRIE wills his quiet ways to Dale Karg. DENNIS STUEWE wills his sports ability to Leon Hoen. KATHLEEN STUEWE wills her tallness and gracefulness to Art Phleghaar. DARVY THOELE wills his knowledge of Pontiac car to Ryland Wickenhauser. EDWIN VOLLRATH wills his ability as "leader" to Phyllis Tellers. LILA WERNER wills her ability to get A's to Lynis Lehrke. RONALD WICHELMANN wills his answers in history class to Eugene Groenke. DIANNE WILL wills the tape of a certain class ring to Barbara Siewert. JOYCE WILLEMS wills love of Physics to Marlys Graupmann. DARLENE WOLTER wills her red hair to Sharon Hinn. CAROLYN ZELLMANN wills her always gay attitude to Carolyn Wroge and Gladys Wolff. EDGAR ZELLMANN wills his sense of humor to Jeannette Buss. HARLAN WERTH wills his red and white Buick to James Schmidt. DARWIN QUAST wills his sleeping in class to Marlin Kohls.



# Subjects



# JUNIORS

## SUBJECTS

JoAnn Bachmann  
Diane Barlau  
LuAnn Bauman  
John Bergmann  
Betty Bleichner

Dennis Bonderson  
Dennis Buehler  
Jeanette Buss  
James Cordell  
Joyce Diedrich

David Eggert  
Roger Eggert  
Robert Fiebelkorn  
Clark Fisher  
Patricia Flannery

Warren Flusemann  
Marlene Fortwengler  
Mary Louise Franck  
Gene Goede  
Marlene Goede

Gloria Gohlke  
Marlys Graupmann  
John Graupmann  
Eugene Groenke  
George Groenke

Dorine Gruenhagen  
Dorothy Gruenhagen  
Arlo Gutknecht  
Lee Gutknecht  
Myra Hedtke

Geraldine Herrmann  
Larry Heuer  
Roger Hilgers  
Sharon Hinn  
Leon Hoen

Harold Hoernemann  
Jolene Hoernemann  
Marlene Jaeckel  
LaVonne Kamps  
Renata Kamps

Dale Karg  
Karen Keefer  
Sylvia Klostermeier  
Donald Klobe  
Karen Kohls





# JUNIORS

## SUBJECTS



Roger Kramer  
Lynis Lehrke  
Margaret Lobitz  
Clarence Maschke  
Joy Menden

Judy Menden  
Gene Mielke  
Hubert Mueller  
John Noenning  
Sharon Noerenberg

Dianne Pawelk  
Arthur Pfleghaar  
Faye Pieper  
Corrine Radtke  
Jerry Raedeke

Gerald Roepke  
Gloria Roepke  
Elaine Rolf  
Beverly Schepers  
James Schmidt

Dallas Schneider  
Betty Schroeder  
Charles Schroeder  
Donna Mae Schrapp  
Eugene Schrapp

Estella Schuette  
Barbara Siewert  
LaJean Stahlke  
Charles Stender  
JoAnn Stender

JoAnn Storms  
Dale Strei  
Karen Stuewe  
Elizabeth Tellers  
Phyllis Tellers

Ralph Unglaub  
Ryland Wickenhauser  
Gladys Wolf  
Elizabeth Wolter  
Lowell Wolter

Carolyn Wroge  
Sheilah Zabel  
Ray Zellmann  
Joyce Ziermann  
Joyce Zimmermann



# SOPHOMORES

## SUBJECTS

Karen Arntzen  
Mark Barlau  
Karen Bartz  
Bernie Beneke  
Stanley Bentz

Virgil Bentz  
Marion Bleichner  
Jenelle Boelke  
Dianne Braunwarth  
Richard Braunwarth

Lyle Brecht  
Ronald Bruers  
Linda Bunge  
Marvin Cebulla  
Janice Dittmar

Mary Ann Doehrmann  
Delmar Droege  
Karen Eiden  
Gerald Lee Feltmann  
David Goede

Douglass Grell  
Pearl Haag  
James Heckman  
Judith Herd  
Carol Jean Herrmann

Gordan Herrmann  
Alfred Holmbeck  
Janet Ische  
ReNaye Ische  
Gerald Kahle

Rhoda Klemp  
Allen Klobe  
Lavonne Kuenzel  
Carol Lemke  
Mavis Lenz

Rolland Lindemeier  
Carolyn Lueck  
Allen Luedtke  
Ann Mass  
Wayne Mantueffel

Robert Manzel  
Judy Mertz  
Larry Myer  
Sandra Mielke  
Carol Kohls





# SOPHOMORES

## SUBJECTS



Robert Mueller  
John Noll  
David Oelfke  
Ormund Ostlie  
Raymond Quast

Monica Reimann  
Barbara Richter  
Douglas Sauter  
Sandra Scheuble  
Jeanie Schimmelpfenning

Douglas Schmidt  
Sharon Schmidt  
David Schmitz  
Dianne Schroeder  
Douglas Schrupp

LaMane Schrupp  
Gloria Schulte  
Maureen Schultz  
Robert Selmo  
Carol Lee Stender

Darlene Stender  
Marla Stender  
Mary Jane Stender  
Darla Stock  
Marie Storms

Thomas Swanson  
Joyce Tattenberg  
Richard Telthoester  
Carol Ann Thalmann  
Wendy Vestal

Ruth Vollrath  
Darrell Werner  
Clara Wickenhauser  
Evon Wilkens  
Arlyce Will

David Wolter  
Leslie Wolter  
Connie Zellmann  
Ethel Zellmann  
Merle Zuehl

Delwyn Wickenhauser

# FRESHMEN

## SUBJECTS

Virgil Baumann  
Diane Bentz  
Diane Bergmann  
Judith Bergmann  
Clarence Bleichner

Donald Bohlmann  
Bonnie Bohnen  
Dennis Brecht  
Kenneth Broker  
George Buckentin

Robert Buckentin  
James Bury  
Victor Buss  
Allen Bussmann  
Marjorie Bussmann

Kerry Clay  
Dennis Dummer  
Karen Eggert  
Dallas Feltmann  
Janet Feltmann

Judith Feltmann  
Sharon Fillbrandt  
Fred Fischer  
Joyce Fruetel  
Melvin Geib

Gerald Goede  
Bruce Good  
Robert Good  
Ronald Grimm  
Ronald Groenke

John Haag  
DoAnn Harms  
Sharon Harmsen  
Jerome Hedtke  
Larry Hedtke

Margie Hedtke  
Eileen Henning  
Marjorie Herrmann  
Sharon Herrmann  
Virginia Hildebrandt

Rose Hoen  
Shirley Hoen  
Roberta Howe  
Diane Hullstrom  
Alvin Jorissen





# FRESHMEN

# SUBJECTS



Richard Kamps  
Sharon Kamps  
Robert Karnitz  
Virgil Klaustermeier  
Wayne Klaustermeier



Carol Kloth  
Darrel Knorr  
Joyce Kramer  
Lowell Kroells  
Gwendolyn Kenzel



Sharon Lobitz  
David McPadden  
David Mackenthun  
Suzanne Melichar  
Darrell Menth



Mary Jane Mielke  
Gerald Mohrbacher  
Robert Mohrmann  
Mary Lou Nellen  
Betty Otto



Roger Panning  
Gerald Pawelk  
Catherine Raedeke  
Judith Rehwaldt  
Patricia Rehwaldt



Darvin Rolf  
Lila Rolf  
John Rothfork  
Warren St. Pierre  
Curtis Sauter



Willard Schlueter  
Richard Schwirtz  
Donald Smith  
Gerald Sons  
Clarence Stender



John Stender  
Judy Stender  
Virgeane Stender  
Willard Stender  
Myrna Stock



Richard Stockmann  
Sharon Sund  
Barbara Tellers  
Sharon Trick  
John Tuebert

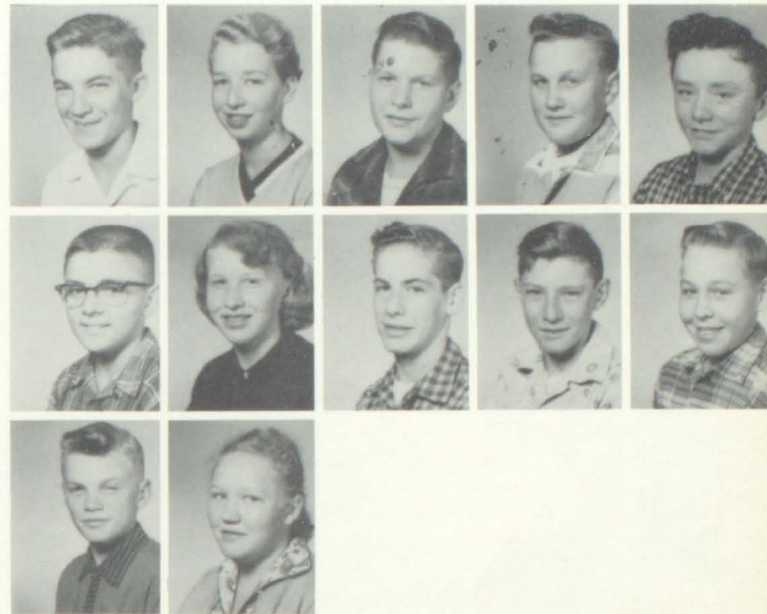
# FRESHMEN

## SUBJECTS

Dennis Vinkemeier  
Joyce Wendorf  
Donald Werth  
Dwight Westermann  
Francis Wickenhauser

Dald Wilding  
Mary Ann Will  
Norman Willems  
Mathias Wirtz  
Eugene Wolter

Wallace Wroge  
Arline ZumHofe



## GRADE 8

Leland Bachmann  
Elanor Bentz  
Bonita Block  
Patricia Chastek  
Gerald Dietel

John Flannery  
Jimmy Good  
Corrine Heckmann  
Richard Elling  
Patsy Hoernemann

Sally Howe  
Lynn Ittel  
Gerald Kamps  
Richard Kroells  
Wayne Lehrke

Dennis Lemke  
Alan Mielke  
John Miller  
Gladys Richardson  
Beverly Ristow

Arlene Segler  
Howard Thamert





# GRADE 7

## SUBJECTS



Gary Bachmann  
Sandra Bergmann  
Barbara Block  
Betty Bohnen  
Margaret Braunworth



Orlie Brecht  
Dennis Butterfass  
David Cebulla  
Barbara Fruetel  
Hal Gutknecht



Faye Halloran  
Lloyd Hammerstrom  
Lola Happ  
Dianne Heckmann  
Michael Hedtke



Dianne Herrmann  
Judith Karg  
Ruth Latzig  
Carol Pawelk  
Maynard Richardson



Joyce Richter  
Patricia Rothfork  
LeRoy Sauter  
Richard Selmo  
Robert Smith



Linda Stiewe  
Richard Stolz  
Sharon Swedelius  
Alan Tuebert  
Michael Vestal



Susan Wertz  
Barbara Wolter

# GRADES 6 AND 5

## SUBJECTS

Larry Bunge  
Virginia Chastek  
Randy Clay  
Bonnie Elling  
Douglas Fiebelkorn  
Andrew Franck

Nancy Fruetel  
Sharon Guethling  
John Haarstad  
Mary Hammerstrom  
John Honebrink  
Jeffery Howe

Mary Klobe  
Duane Krolls  
Patricia McKim  
Diane McPadden  
Marsha Menden  
Gordon Miller

Hienz Riemann  
Rita Turula  
Marilyn Wirtz  
Bonita Wolter  
Glenn Wuetherich  
Gary Yaeck

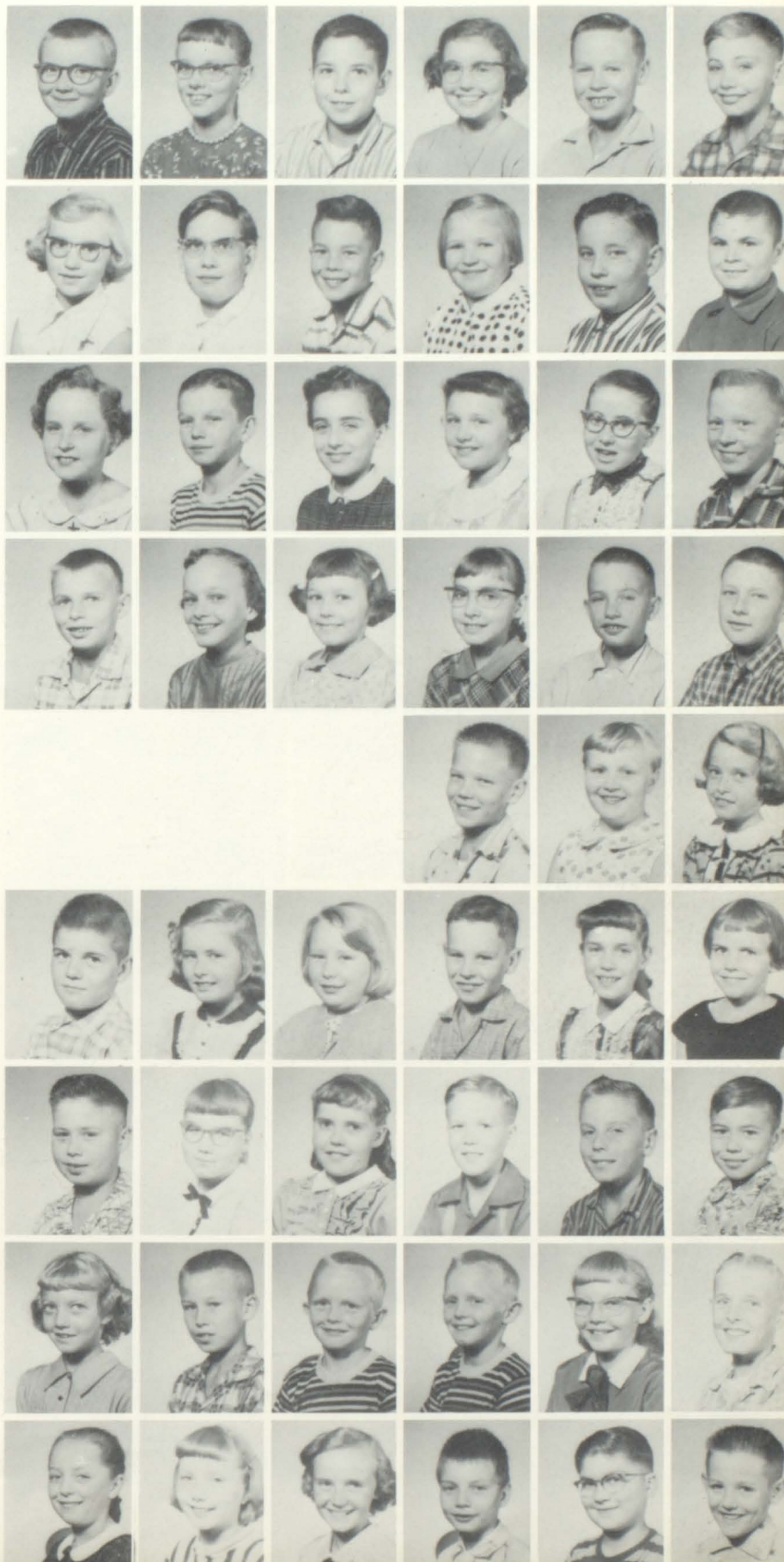
Charles Armhein  
Annyee Arntzen  
Doren Bentz

Michael Bergmann  
Julene Bondeson  
Rosemary Braunworth  
Larry Brecht  
Shirley Butterfass  
Geraldine Byer

James Fortwengler  
Patty Good  
Dixie Gutknecht  
Earl Haarstad  
Kenneth Harmsen  
James Hedtke

Linda Hullstrom  
Roger Kamps  
Richard Kroells  
Robert Kroells  
Suzanne Maurine  
Henry Reimann

Betty Lou Richter  
Carol Roepke  
Susan Rosches  
Adolph Segler  
Daniel St. Pierre  
James Wiemann





# GRADES 4 AND 3

## SUBJECTS



Bertha Bachmann  
Beverly Block  
Ann Bohlinger  
Linda Brecht  
Marcia Buckentin  
Gregory Buesgens



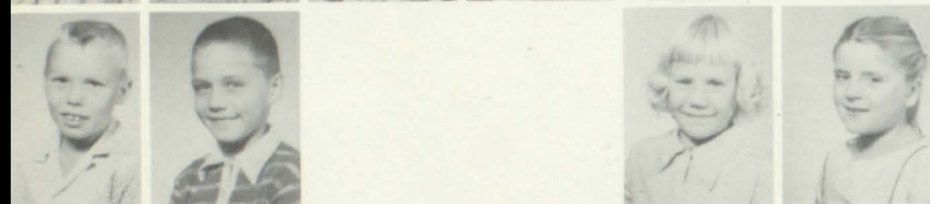
Richard Eggers  
Larry Flewelling  
Russel Good  
Marcia Green  
Steven Hackett  
Elaine Herrmann



Linda Ische  
ElRoy Latzig  
Sharon Lemke  
Glenn McPadden  
Charmaine Peterson  
Terry Peterson



Donald Reimann  
Dean Richardson  
Danny Roepke  
Darlene Schrupp  
Kenneth Thaemert  
John Turula



Michael Wirtz  
Douglas Wolter

Jill Amrhein  
Mary Jane Bergmann



Faye Bohnen  
John Braunworth  
Diane Buesgens  
David Butterfass  
Margaret Fruetel  
Micky Good



Susan Honebrink  
Dennis Hullstrom  
Mary Ittel  
Margaret Kehr  
Jeannette Kroells  
Joyce Mackenthun



Dwight Nelson  
Ricky Peterson  
Susan Reimann  
James Richter  
Kathleen Rothfork  
Delores Scheele



David Schrupp  
Karen Schwirtz  
Ronald Smith  
Bobby Stender  
Linda Stender  
Marilee Stockmann



# GRADE 2 AND 1 SUBJECTS

Dean Bachmann  
Denise Bailey  
Gary Budahn  
Connie Bunge  
Danny Chastek  
Dennis Demm

Dennis Eggers  
Mary Good  
Cynthia Grimm  
Dean Hackett  
Patricia Hammerstrom  
Bobby Hedtke

Wanda Henning  
Judy Herrmann  
LeeAnn Ische  
Darlene Kranz  
Bonnie Kratzke  
James Luedtke

Lynne Mackenthun  
Michael Matern  
Patricia Maurine  
Charles Mueller  
Bonnie Nelson  
Nancy Peterson

Karen Richter  
Judy Rosches  
Ronnie Schrempp  
Marcia St. Pierre  
Gary VanEyll  
Jolly Wiemann

Lorna Wolter  
Bonnie Zellmann

David Anderson  
Ronald Bentz  
Robert Bergmann  
Peggy Bergmann  
Barbara Bohlinger  
Billy Braunworth

Gary Braunworth  
Deborah Buesgens  
Susan Buckentin  
William Dietrich  
Bonnie Fruetel  
Vicki Fruetel

John Good  
Myrna Hammerstrom  
Jeffery Hedtke  
Dale Herrmann  
Dale Hoof  
Donald Kowalke





# GRADE 1 AND KINDERGARTEN SUBJECTS

Curtis Kroells  
Judy Krang  
Debra Lanzen  
Bruce Nelson  
Diane Peterson  
Connie Richter

Dennis Rohling  
Jimmy Rosckes  
Phyllis Schrempp  
Larry Schrupp  
David Schwirtz  
Barbara Sharmer

Bobby Smith  
Bruce Stender  
Steven Thorne  
Howard VonBerge

Cindy Anderson  
Steven Bentz  
Bobby Block  
Cindy Braunwarth  
Susan Brinkman  
Kathy Buesgens

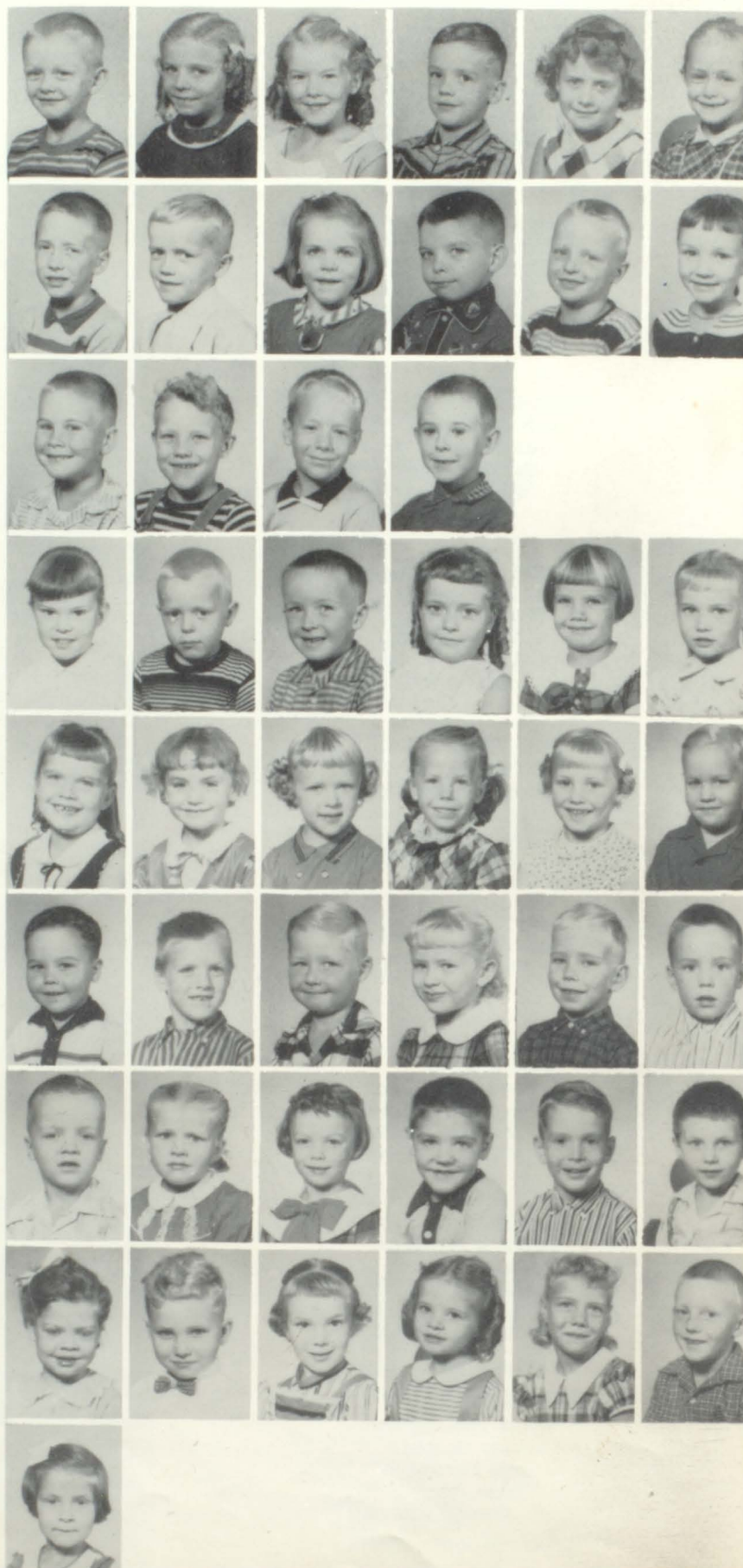
Kathy Butterfass  
JoAnn Byers  
Mary Ann Dettman  
Betsy Eggers  
Wanda VanEyll  
Larry Fruetel

Tommy Good  
Gary Grimm  
Bobby Hepp  
Susan Kloth  
Tomy Lueck  
Jeffrey Matern

Keith Nelson  
Janis Pederson  
Dana Pieper  
Gregary Pijohn  
Tommy Schoewe  
Carl Segler

Wendy Selmo  
Terry Shima  
Jean Smith  
Susan Stoeckman  
Lana Swedelius  
Gene Yaeck

Jacky Zellmann







# HOME

# 19



## QUEEN SUSAN



# COMING

## 57



# KING DENNIS





# SENIOR BAND



ROW ONE: Judy Mertz, Doris Franck, Renata Kamps, Jeann Kugath, Wendy Vestal, Karen Aratzen, Rhoda Klemp, Genelle Boelke, Susan Clay, Margaret Lobitz. ROW TWO: Evon Wilkens, Linda Bunge, Barbara Richter, LaJean Lemke, Myra Hedtke, Carol Lemke, Jolene Hoernemann, Gordon Boelke, Sharon Lobitz, Douglas Sauter, Sharon Noerenberg, Gerald Kahle, Marla Stender, Karen Happ, Karen Buss. ROW THREE: LuAnn Baumann, Karen Kohls, LaJean Stahlke, Pearl Haag, John Graupmann, Dianne Braunwarth, Elizabeth Wolter, Gary Bachmann, Carolyn Wroge, Annely Fruetel, Mary Mesenbring. ROW FOUR: STANDING- Gwendolyn Kuenzel, Lavonne Kuenzel, Donna Schrupp, Carol Ann Thalmann. SEATED- Karen Bartz, Jeannette Buss, Monica Reimann. DIRECTOR- Mr. Ronald Schroer.



# JUNIOR-BEGINNER'S BAND



ROW ONE: Barbara Block, Joyce Richter. ROW TWO: Patsy Hoernemann, Bonnie Block, Judy Karg, Richard Elling, Jimmy Good, Lynn Ittel, Gary Backmann, Margaret Braunworth, Sharon Swedelius, Patty Rothfork, Linda Stiewe. ROW THREE: Allen Tuebert, Maynard Richardson, Mr. Schreer; Director, Judd Smith, Sandra Bergmann, Betty Bohnen, Dianne Heckmann, Arlene Segler.



ROW ONE: Patty Good, Ann Bohlinger, Betty Richter, Marsha Buckentin, Rita Trula. ROW TWO: Nancy Fruetel, Suzanne Maurine, Marsha Green, Beverly Block, Charmaine Peterson, Sharon Guethling, Douglas Wolter, Terry Peterson, John Haarsted, Ronnie Kroells, Duane Kroells, ROW THREE: Mr. Schroer, Director; Shirley Butterfass, Blanche Wolter, Andy Franck, Rosemarie Braunworth, Larry Fluelling, John Trula, Mary Sue Shima, Marsha Menden.





JoAnne Kugath  
Judy Mertz  
Karen Buss

Mary Mesenbring  
John Graupmann  
Douglas Sauter  
Donna Schrupp

Jolene Hoernemann  
Karen Happ  
Carolyn Wroege

Linda  
Bunge

Judy  
Mertz

Judy  
Karg



Beverly  
Schepers

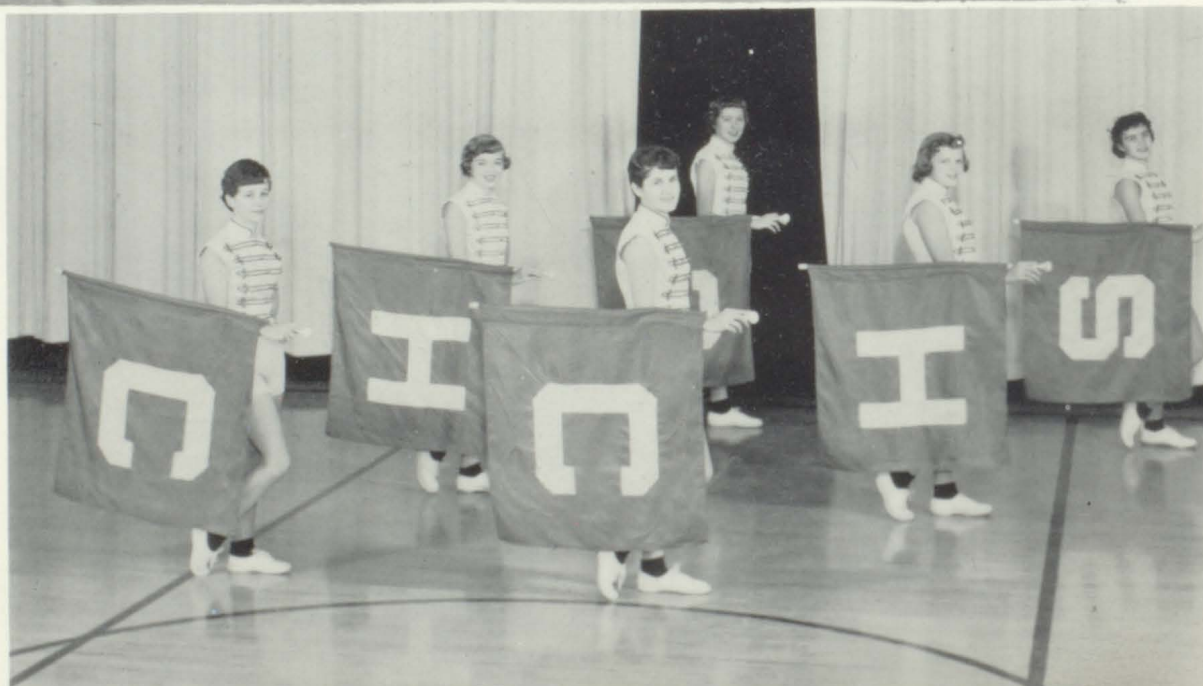
Sharon  
Hinn

Barbara  
Seiwert

Joyce  
Zeirmann

Faye  
Peiper

Joanne  
Storms





# GLEE CLUB



ROW ONE: M. Stender, A. Hilgers, B. Schroeder, R. Ische, J. Bergmann, R. Kamps, K. Stuewe, D. Will, J. Ische, K. Schoewe, C. Zellmann, J. Herd, C. Zellmann. ROW TWO: L. Lemke, D. Wolter, M. Schrupp, J. Bachmann, S. Zabel, P. Tellers, B. Boyle, K. Happ, J. Dietrich, K. Buss, M. Mesenbring (Pianst), E. Schuette, J. Storms, G. Gohlke, L. Kamps, C. Kohls, S. Milbrandt, K. Kohls. ROW THREE: K. Keiden, L. Werner, R. Vollrath, D. Schroeder, D. Pawelk, S. Schieble, S. Klostermeier, S. Schmidt, L. Schmelpennig, E. Buckentin, L. Lemke, Mr. Schroer.

## S E X T E T



M. Stender, B. Boyle, K. Buss, K. Happ,  
J. Storms, R. Kamps.

## T R I O



Ruth Vollrath, Deanna Pawelk, Betty  
Schroeder.



# SMOKE SIGNAL



FIRST ROW: Darlene Wolter, Joyce Bergmann, Carolyn Zellmann, Kathryn Schoewe, Barbara Boyle, Maxine Schrupp. SECOND ROW: Lois Lemke, Ardis Hilgers, Renate Kamps, Joyce Zemmermann, Marlys Graupmann, Margaret Lobitz, Barbara Siewert, Carolyn Wroge, Annely Fruetel, Karen Buss, Joanne Kugath, Barbara Hoberg, Gladys Wolf, Mary Mesenbring. THIRD ROW: LuAnn Baumann, Jeannette Buss, Joyce Diedrich, Marlene Jackel, LaJean Stahlke, Joyce Ziermann, Faye Pieper, JoAnn Bachmann, Sheilah Zabel, Lyla Werner, Deanna Pawelk, LaJean Lemke.



FIRST ROW: LaVonne Kamps, Gloria Gohlke, Patty Flannery, Myra Hedlke, Karen Kohls, Sharon Noerenberg. SECOND ROW: Carol Lemke, Beverly Schepers, Sharon Hinn, JoAnn Storms, Corrine Radtke, Betty Schroeder, RaNaye Ische, Carol Thalmann, Marla Stender, Carol Kehls, JoAnn Stender. THIRD ROW: Lavonne Kuensel, Karen Arntzen, Jenelle Boelke, Karen Bartz, Sylvia Klaustermeier, Pearl Hagg, Rose Ann Salden, Janet Ische, Clara Wickenhauser, Judy Herd, LaMane Schrupp.



**S  
M  
O  
K  
E**

**S  
I  
G  
N  
A  
L**



FIRST ROW: Susan Clay, Clara Ann Heincisch, Dianne Will, Karen Happ, Pauline Louis, Doris Franck.  
SECOND ROW: Alvin Sauter, Tom Bury, Mary Hedtke, Joanne Hedtke, Mary Salden, Mr. Swedelius.

## **CENTRALIAN**



FIRST ROW: Alvin Sauter, Tom Bury, Mary Mesenbring, Bruce Hebeison, Carolyn Zellmann, Miss Beckrick.  
SECOND ROW: Lyle Behnen, Karen Buss, Joanne Kugath, Maxine Schrupp, Kathryn Schoewe, Joyce Bergmann, Annely Fruetel, Dianne Will, Joanne Hedtke, Mary Salden, Susan Clay, Karen Happ, Ardis Hilgers, Clara Heincisch. THIRD ROW: Edwin Vollrath, Edgar Zellmann, Rodney Kuntz, Ronald Wichelmann, Tom Klobe.  
FORTH ROW: Pauline Louis, Lois Lemke, Eunice Buckentin, Shirley Klaustermier, Darlene Wolter, Lyla Werner, Barbara Boyle, Deanna Pawelk, Doris Franck.



# C CLUB

# SPANISH CLUB



ROW ONE: A. Sauter, B. Stolz, R. Lindemeier, J. Bergmann, K. Karnitz, B. Bussmann, T. Bury, G. Feltmann.  
ROW TWO: Mr. Braun, Advisor; M. Barlau, W. Bongard, W. Flusemann, D. Feltmann, J. Bergmann, J. Effertz,  
C. Fisher, B. Joos, D. Schmidt, J. Heckmann, D. Grell. ROW THREE: L. Bohnen, H. Hoernemann, D. Sauter,  
L. Hoen, W. Willems, O. Ostlie, A. Luedtke, L. Brecht, L. Gutknecht.



ROW ONE: B. Hebisen, K. Kohls. ROW TWO: K. Buss, J. Kugath, C. Wroge, E. Vollrath, E. Wolter, T. Klobe,  
M. Graupmann, A. Fruetel, B. Hoberg, H. Mueller, J. Zimmermann, B. Siewert, S. Clay, F. Pieper, M.  
Jaekel, C. Hienisch, K. Happ, M. Mesenbring, E. Rolf, D. Franck, Mrs. Oppregard, Advisor; ROW THREE: J.  
Craupmann, T. Bury, B. Bussmann, A. Sauter.

# SCHOOL PATROL



ROW ONE: M. Vestel, J. Good, H. Gutknecht, R. Elling, J. Smith, L. Bachmann, R. Clay, O. Brecht.  
 ROW TWO: R. Stolz, L. Hammerstrom, R. Selmo, R. Turula, V. Chastek, S. Guethling, M. Hammerstrom,  
 A. Teubert, G. Miller, J. Wiemann, M. Hedtke, A. Franck. BACK ROW: L. Brecht, G. Wietherich,  
 M. Bergmann, C. Amrhein, G. Bachmann, S. Butterfass, D. McPadden, M. Wirtz, D. Gutknecht.



**F  
F  
A**

OFFICERS: M. Klostermeier, C. Maschke, W. Willems, W. Flusemann,  
 L. Kammann, Mr. Thoreson, Advisor.



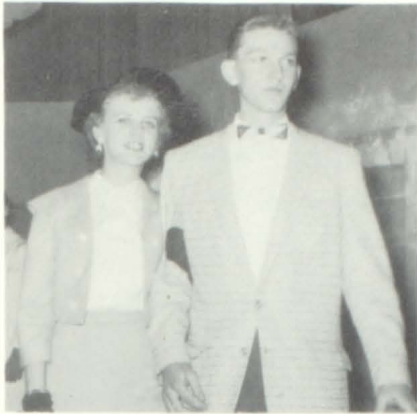
# JUNIOR CLASS PLAY



## CURIOUS SAVAGE

Mrs. Paddy . . . . .	Elizabeth Wolter
Jeff . . . . .	Lee Gutnecht
Florence . . . . .	Joyce Ziermann
Fairy May . . . . .	Faye Pieper
Hannibal . . . . .	John Noennig
Mrs. Savage. . . . .	Gladys Wolf
Senator Savage . . . . .	Hubert Mueller
Judge Savage . . . . .	Arlo Gutknecht
Dr. Emmett . . . . .	Eugene Schrupp
Miss Willie . . . . .	Carolyn Wroege
Lilly Belle . . . . .	Sheilah Zabel
Director . . . . .	Mrs. Oppegard

# PLAY SCENES





# C. H. S. Calendar

September	3	Opening of School
September	6	Football Game-St. Marys-Here
September	13	Football Game-Waconi-Here
September	20	Football Game-Watertown-There
September	27	Football Game-Orono-Here-Homecoming
October	4	Football Game-U. High-There
October	6-12	Fire Prevention Week
October	11	Football Game-Chasks-There
October	18	Football Game-Shakopee-Here
October	23	Football Game-Blackdog-Here
October	24-25	MEA Reg. Convention-St. Paul
October	29	Lyceum-2:00 P. M.-Albrecht Adventures
November	6-7	Junior Class Play
November	10-16	American Education Week
November	11	Basketball Practice Begins
November	28-29	Thanksgiving Vacation
November	29	Basketball Game-Glencoe-There
November	30	Basketball Game-Crosby-Ironton-There
December	3	Basketball Game-Danube-Here
December	6	Basketball Game-Silver Lake-Here
December	10	Basketball Game-Montgomery-There
December	13	Basketball Game-LeSeuer-Here
December	17	Basketball Game-Arlington-There
December	19	Christmas Program
December	20	Christmas Vacation Begins
January	6	School Resumes
January	7	Basketball Game-Orono-Here
January	10	Basketball Game-Glence-Here
January	14	Basketball Game-Lester Prairie-Here
January	15	Lyceum-2:00 P.M. Mal. Robbins
January	17	Basketball Game-Gaylord-There
January	21	Basketball Game-Belle Plaine-There
January	24	Basketball Game-Silver Lake-There
January	31	Basketball Game-Hutchinson-Here
February	4	Basketball Game-Chaska-Here
February	7	Basketball Game-Olivia-Here
February	7	Lyceum-10:30 A.M.-Silvia
February	11	Basketball Game-Belle Plaine-Here
February	18	Basketball Game-Brounton-There
February	21	Basketball Game-Lester Prairie-There
March	3	Lyceum-10:30 A.M. K. A. MacKenzie
March	3-8	District Basketball Tournament
March	10-15	Regional Basketball Tournament
March	20-22	State Basketball Tournament
March	24	Athletic Banquet
March	28	Easter Vacation Begins
April	7	School Resumes
April	17-18	Senior Class Play
May	9	Jr.-Sr. Prom
May	27	Graduation
May	29	School Closes

# CLASS OFFICERS

## SENIORS



Vice President-Barbara Hoberg  
President-Edwin Vollrath  
Secretary-Treasurer-Gordon Boelke

## JUNIORS



Secretary-Treasurer-Jerry Raedtke  
Vice President-Lee Gutknecht  
President-Bob Fiebelkorn

## SOPHOMORES



President-James Heckmann  
Vice President-Bobby Mueller  
Secretary-Treasurer-Wendy Vestal

## FRESHMEN



Vice President-Darvy Rolf  
Secretary-Treasurer-Roberta Howe  
President-Kerry Clay  
Student Council-Roger Panning



# FTA



ROW ONE: Marlys Graupmann, Ardis Hilgers, Barbara Siewert, Karen Buss, Annely Fruetel, Mary Mesenbring, Carolyn Wroge, Carolyn Zellmann, Kathy Schoewe. ROW TWO: Mrs. Oppegard, Jeannette Buss, Marlene Jaekel, Dianne Will, Patty Flannery, Joyce Zimmermann, Karen Kiefer, Barbara Hoberg, Lois Lemke, Karen Kohls.

# DECLAM



ROW ONE: Sheilah Zabel, LaVonne Kamps, Gloria Gohlke, Jeannette Buss, Kathleen Stuewe, Patty Flannery, Sue Clay. ROW TWO: Rodney Kuntz, Tom Klobe, James Schmidt, Edgar Zellmann, Gordon Boelke, Darvy Thoele, Bill Menth, Lyle Bohnan. ROW THREE: Barbara Leikam, Dianne Pawelk, Gloria Roepke, Joy Menden, Judy Menden, Gladys Wolff, Barbara Hoberg, Joyce Zimmermann.



# STUDENT COUNCIL



BACK ROW: Mr. Maurine Advisor, Kerry Clay, Bob Fiebelkorn, Al Sauter. FRONT ROW: James Heckmann, Edwin Vollrath, Carolyn Wroege, Douglas Sauter, Bruce Hebiesen.

# LIBRARIANS



SITTING, LEFT TO RIGHT: Darlene Wolter, Dianne Will, LaJean Lemke, Betty Schroeder, Mary Louise Franck, Karen Keefer. BACK ROW: Joyce Zimmermann, Hubert Mueller, Larry Heuer, Donald Klobe, Dallas Schneider, John Noennig, Mr. McGilvra.



# SENIOR GAA



ROW ONE: Sheilah Zabel, Carolyn Wroge, Faye Pieper, Barbara Siewert, Judy Herd, Connie Zellmann, Marla Stender, Carol Herrmann, Carolee Stender. ROW TWO: Genelle Boelke, Judy Menden, Bev Schepers, Sharon Nuereberg, Karen Kohls, Sharon Hinn, Joyce Diedrich, Marlene Fortwengler, Joy Menden, Carol Kohls, Sandra Schieble. ROW THREE: Ann Mass, Dianne Pawelk, Ethel Zellmann, Maurine Schultz, Gloria Roepke, Sharon Schmidt, Rhoda Klemp, LaMane Schrupp.

# JUNIOR GAA



ROW ONE: Judith Bergmann, Joyce Fruetel, Judy Stender, Arlene Segler, Margret Braunwarth, Barbara Block, Sharyn Swedelius, Virgene Stender. ROW TWO: Bonnie Bohnen, Lola Happ, Judy Karg, Linda Stiewe, Marjorie Bussmann, Faye Halloran, Dianne Heckmann, Barb Fruetel, Betty Bohnen.





# Sports

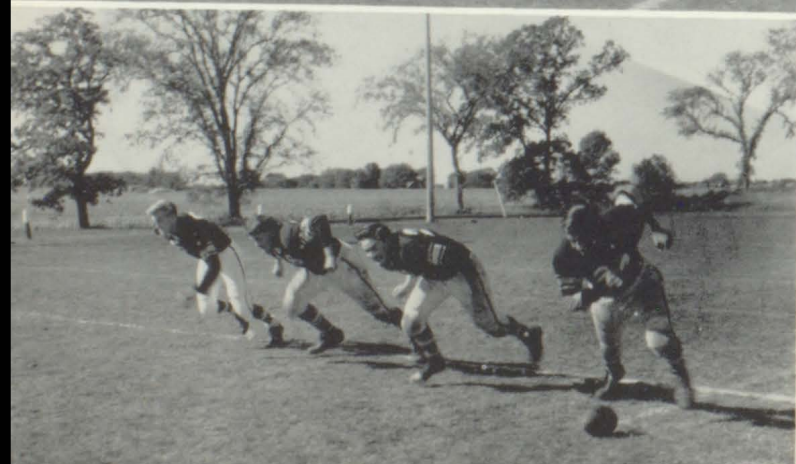
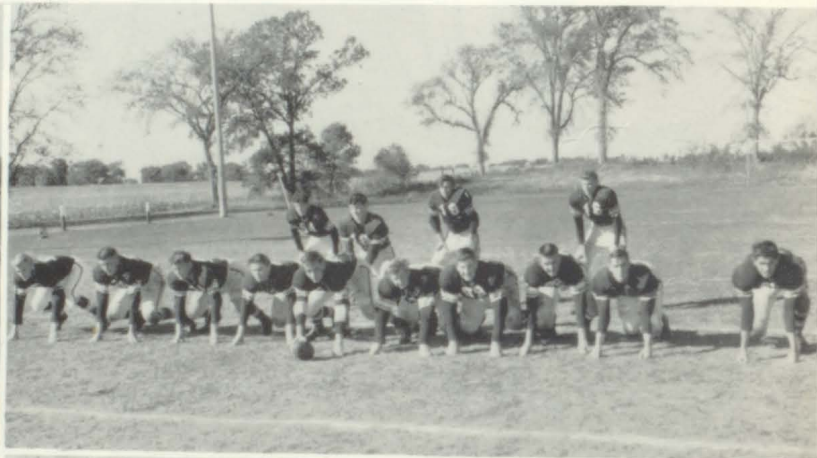


# MINNESOTA VALLEY CHAMPIONS



FRONT ROW: Ron Strei, Bob Joos, Bill Bussmann, Al Sauter, Bob Stolz, Co-Capts. Tom Bury, Dennis Stuewe, Derald Feltmann, Bob Fiebelkorn, Dale Strei, Gerald Feltmann, John Bergmann, and James Bergmann. SECOND ROW: Asst. Coach John Kress, Roger Lindemeier, Arlo Gutknecht, Werner Willems, Ormund Oslie, Warren Flusemann, Tom Swanson, Douglas Grell, Wayne Bongard, Mark Barlau, Kenneth Karnitz, Jerry Raedeke, Roger Eggers, Leon Hoen, and Coach Edgar Braun. BACK ROW: Student Mgr. Clark Fisher, Virgil Bentz, Lyle Brecht, Allen Luedtke, Douglas Schmidt, James Heckmann, Douglas Sauter, Lee Gutknecht, and Richard Wendtland. NOT PICTURED: Student Mgr. Lyle Bohnen, Stanley Bentz, Harold Hernamenn.

## PRACTICE

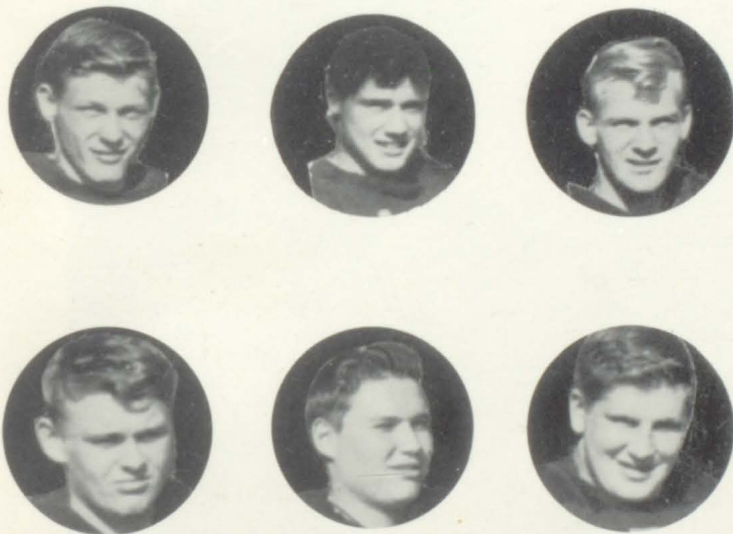




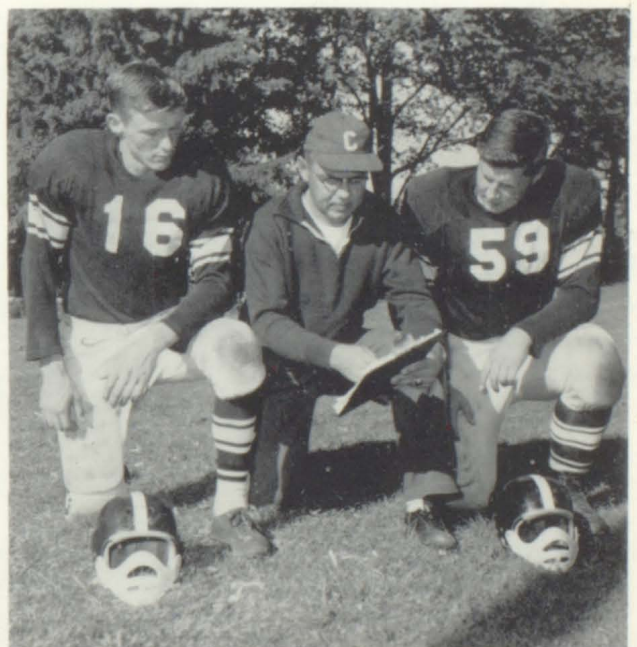
## Scores

C. H. S.	35 - 0	St. Mary's
C. H. S.	33 - 7	Waconia
C. H. S.	37 - 13	Watertown
C. H. S.	14 - 0	Orono
C. H. S.	13 - 0	U. High
C. H. S.	14 - 6	Chaska
C. H. S.	33 - 0	Shakopee
C. H. S.	Forfeit	Black Dog

### ALL CONFERENCE



### CO-CAPTAINS





## "A" TEAM



FIRST ROW: Gerald Roepke, Gerald Feltemann, Dennis Stuewe, Derald Feltmann, Bob Fiebelkorn, Coach Robert Melenich, Darrel Werner, Mark Barlau, Jim Effertz, Jim Bergmann, Tom Swanson, David Wolter, Lee Gutknecht, Student Manager, Lyle Bohnen.

	Central
1. Glencoe	38 - 42
2. Crosby-Ironton	55 - 57
3. Danube	47 - 63
4. Silver Lake	44 - 63
5. Montgomery	54 - 47
6. LeSueur	43 - 52
7. Arlington	48 - 56
8. Orono	51 - 56
9. Glencoe	49 - 85
10. Lester Prairie	34 - 66
11. Gaylord	46 - 79
12. Belle Plaine	53 - 41
13. Silver Lake	43 - 62
14. Hutchinson	71 - 59
15. Chaska	55 - 56
16. Olivia	49 - 84
17. Belle Plaine	59 - 83
18. Brownton	68 - 65
19. Lester Prairie	49 - 63

### SEASON

15 wins - 4 losses

### TOURNAMENT

Hector 55 - Central 48

## "B" TEAM



FIRST ROW: Jim Heckmann, Mark Barlau, David Wolter, Lyle Brecht, Darrel Werner.  
SECOND ROW: Student Manager, Jack Noening, Richard Wendlandt, Wayne Mantueffel, Stenly Bentz, Wendell Stuewe, Coach, John Kress.

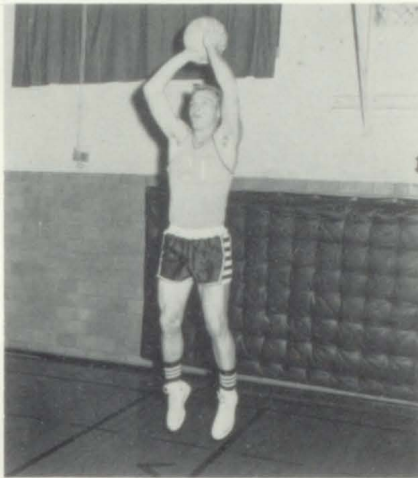


# FRESHMAN TEAM

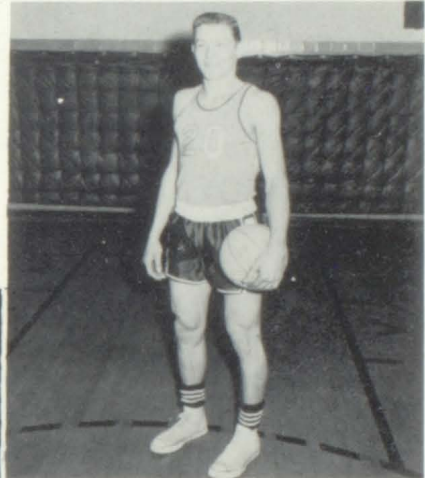


FIRST ROW: Roger Panning, Kerry Clay, Darvin Rolf, James Bury, Bruce Good, Donald Smith, Alvin Jerissen, Fred Fischer, Dennis Dummer, SECOND ROW: Eugene Wolter, Student Manager; Wallace Wroge, Gerald Mohrbacker, Dennis Brecht, Melvin Geib, Kenneth Broker, Richard Schuritz, Robert Mohrmann, Gerald Pawelk, Donald Bohlmann, John Teubert, David Mackenthun, Warren St. Pierre, Coach Melenich.

## STARTING FIVE



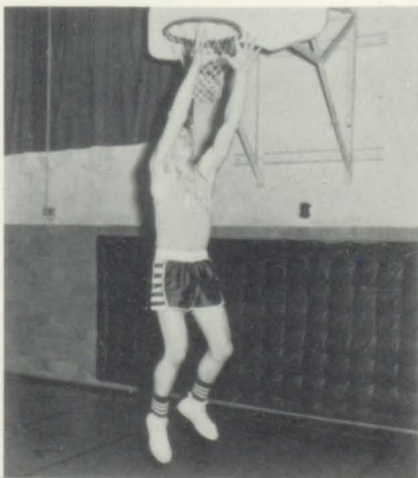
ROBERT FIEBELKORN



DENNIS STUEWE



GERALD ROEPKE



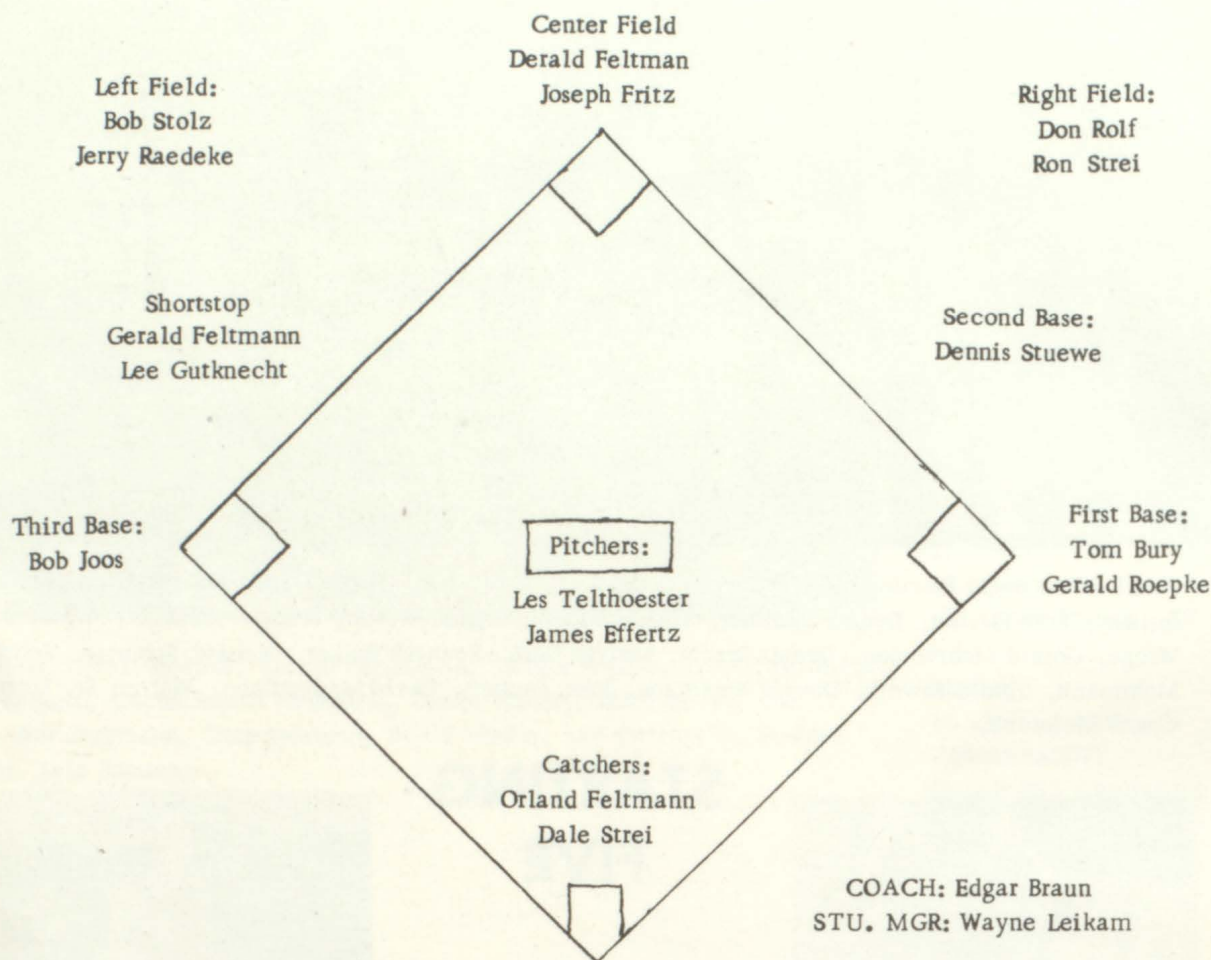
GERALD FELTMANN



DERALD FELTMANN



# 1957 DISTRICT 12 CHAMPIONS



The Central Indians completed a seven-game schedule with a 5 wins and 2 lost record. They swept through four District Tournament games to win their third District Title in the past four years. The Indians lost to Tracy in the opening round of the Region III Tournament at Madison 4-2. Season's highlights were the perfect no-hit game by Jim Effertz in the district opener. Also the Indians 3-2 win over Bird Island in the semi-final round of district tourney in 11 innings.

## SEASON'S SCORES

### SEASON SCHEDULE

CENTRAL	6	Glencoe	2
CENTRAL	12	Waconia	16
CENTRAL	12	Hutchinson	11
CENTRAL	13	Watertown	8
CENTRAL	20	Brownton	3
CENTRAL	4	Lester Prairie	3
CENTRAL	7	Glencoe	12

### DISTRICT TOURNAMENT

CENTRAL	3	Brownton	0
CENTRAL	4	Glencoe	3
CENTRAL	3	Bird Island	2
CENTRAL	4	Lester Prairie	2

### REGIONAL TOURNAMENT

CENTRAL	2	Tracy	4
---------	---	-------	---

## CHEERLEADERS "A" TEAM



FRONT TO BACK: Doris Franck, Barbara Leikam, Deanna Pawelk, Susan Clay.

## "B" TEAM



LEFT TO RIGHT: Carole Lemke, Judy Mertz, Rose Hoen, Dianne Hullstrom.



# LUNCH TIME



Mrs. Zellmann  
Mrs. Fruetel



Mrs. Kohls  
Mrs. Harms



# SCENES AROUND SCHOOL



Edwin Droege, Walter Strehlke, Harvey Bachmann,  
Willard Sauter, Mike Bachmann, Robert Pieper,  
Urbin Willems, Clarence Rolf.



Merlin Fruetel



Louis Maack





# School Scenes



# PATRONS

Al's Bar

Bachmann's Drug Store

Bailey's Sales and Service

Bruer's Service Station

Buegel and Mesenbring

Bunge's Red Owl

Bury's V-Store

Central Lumber Co.

Clark's Feed Mill

Effertz Meat Market

Hamburg Co-op Store

Hamburg Locker Assoc.

Kloempken Gas Station

Krantz Shoe Shop

Lindert's Hardware

Kramer's Mobile

Merlin Grimm

Mueller's Cafe

Wm. Mueller & Sons

New Germany Feed Mill

Norwood Auto Service

Norwood Bakery

Norwood Gamble Store

Norwood Meat Market

Norwood Recreation

Norwood State Bank

Oak Grove Dairy

Palace Drug Store

Quast Furniture

Stahlke Fairway Store

Stender Produce

White's Cafe

Young America Co-op Store

Young America Meat Market

Zieper Insurance Agency

Zellmann's Store



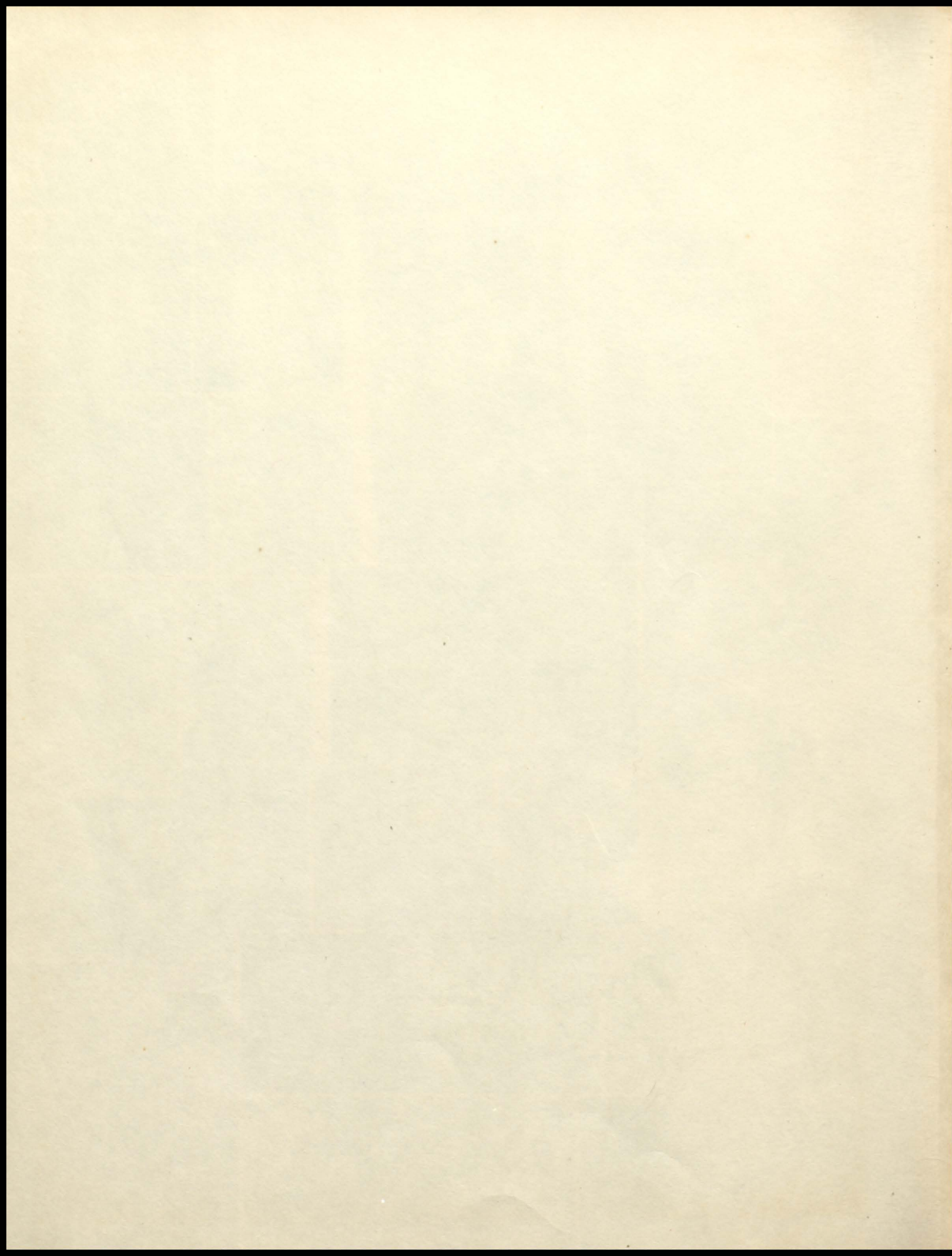


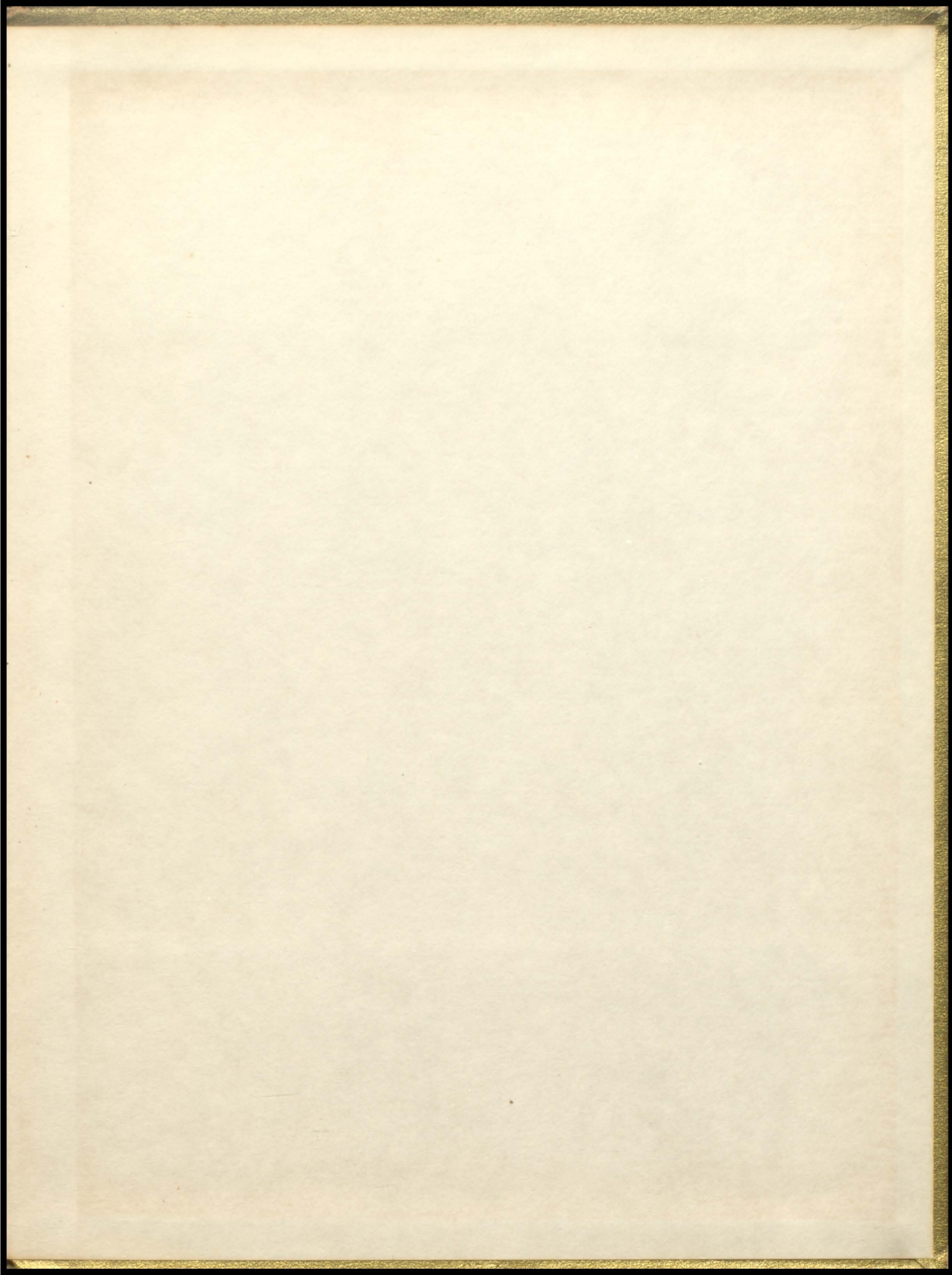


*Myers*  
**YEARBOOKS**  
*in deep tone*











COVER BY  
MYERS