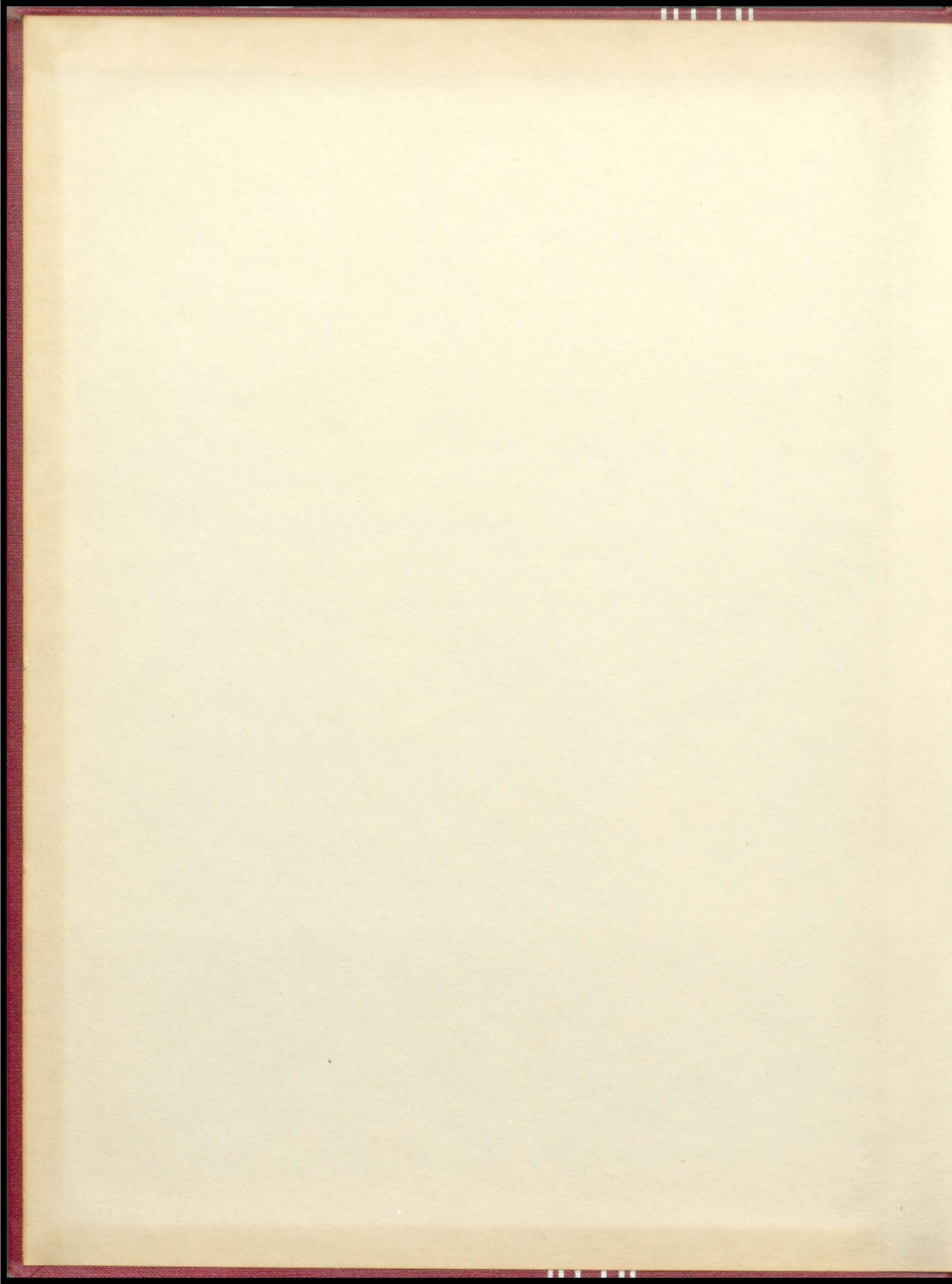
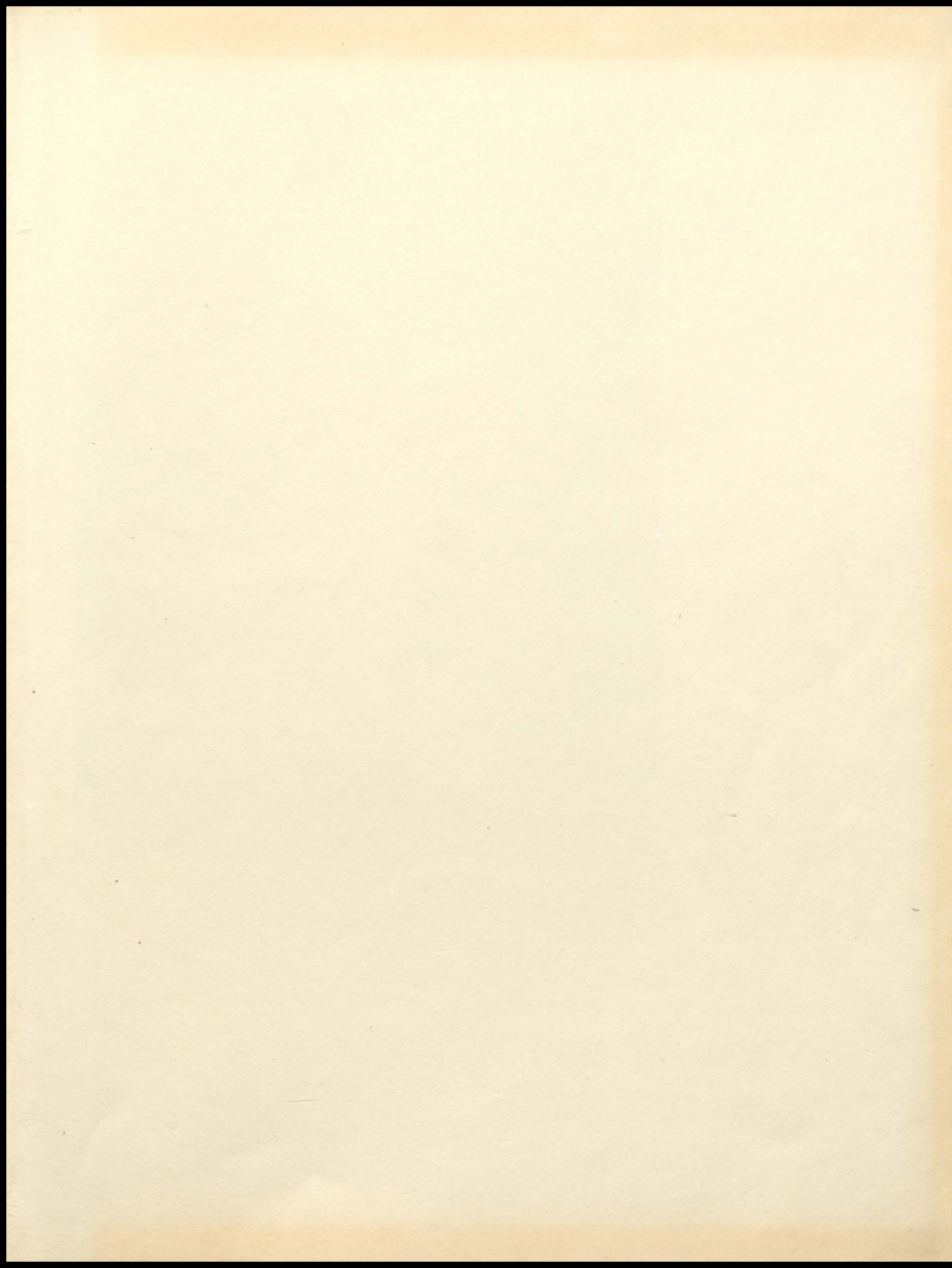


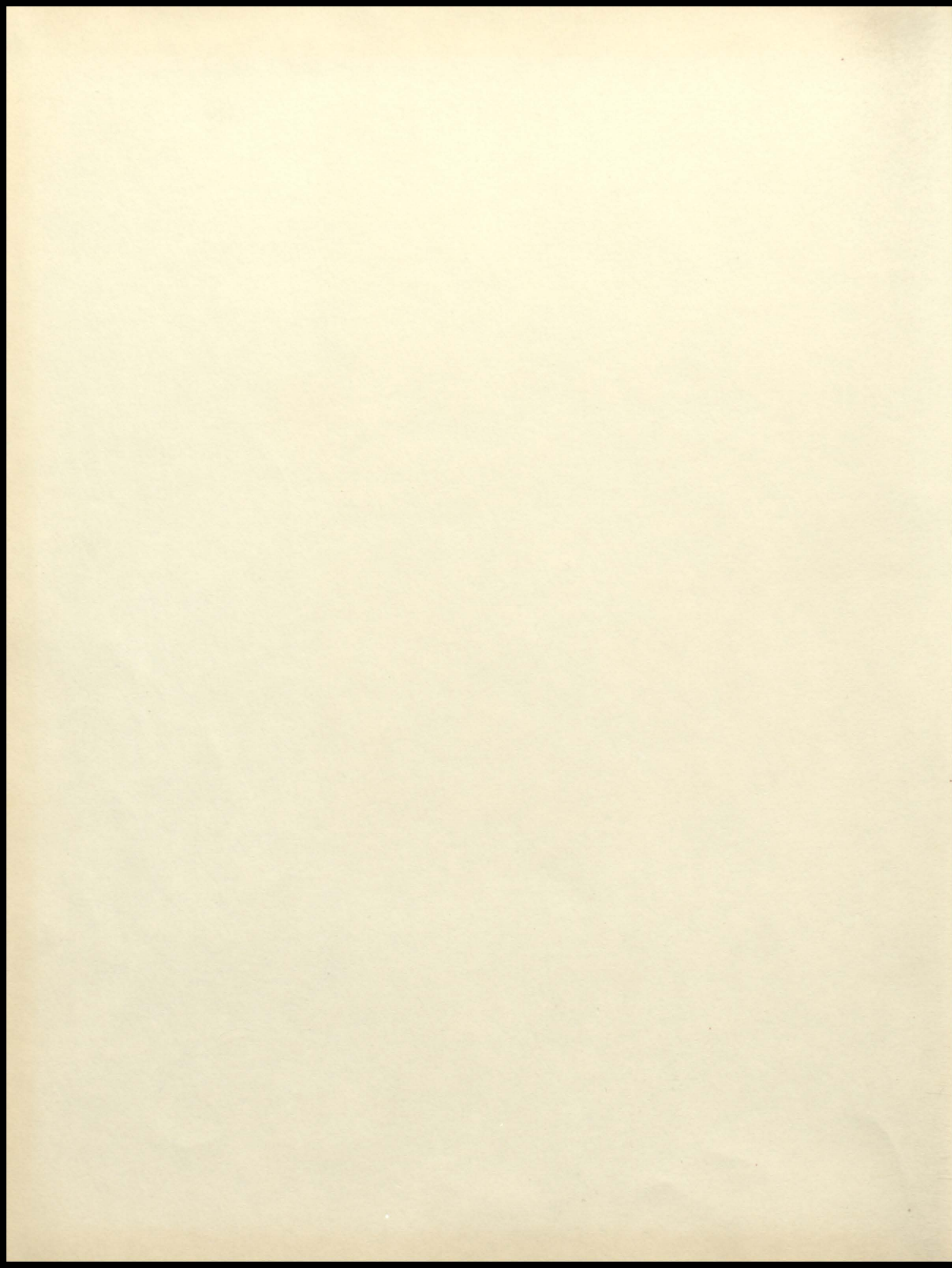
III  
THE  
III  
CENTRALIAN



19 III 54









C  
E  
N  
T  
R  
A  
L  
I  
A  
N  
'54

PUBLISHED BY THE SENIORS OF  
CENTRAL HIGH SCHOOL  
NORWOOD - YOUNG AMERICA  
MINNESOTA

# PILOTS COPILOTS

The administrators and faculty who have guided our flight through school.

Page 4

# LANDING

As seniors, we now have landed and are looking forward to our flight of the future.

Page 7

# TAKE OFF

The underclassmen who are still on their flight through school.

Page 19

# FORMATIONS

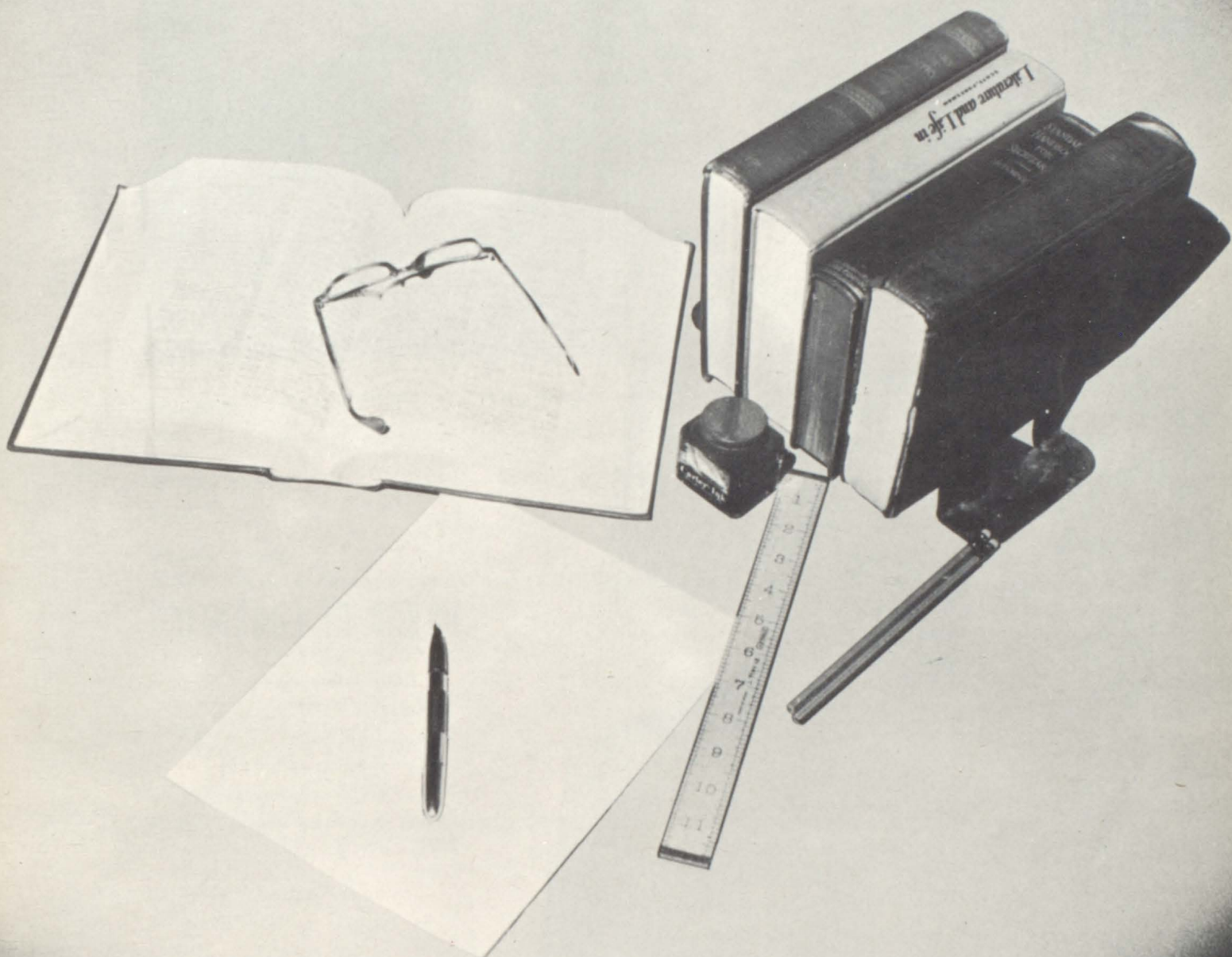
The formations which have been learned in sports are as important as our classroom instructions.

Page 29

# LOG

A record of the various activities in our school life during the year.

Page 37



## DEDICATION

To the teachers and advisors who have helped to enlarge our education, and helped us prepare for our second adventure in life, we dedicate our 1953-54 edition of the Centralian, to you, the faculty.

# PILOTS



HOWARD G. PETERSON Superintendent



RUDOLF G. MAURINE Principal

## BOARD OF EDUCATION

MR. ARTHUR BUEGEL  
MR. JOHN A. FAHEY  
MR. EARL SMITH  
MR. EUGENE SHIMA  
MR. E. J. RANZINGER  
MR. J. J. THOMAS



CHARLES ANDERSON

Physics; General Science 9; Biology; Boy Scouts; Audio-Visual Aid.

EDGAR BRAUN

U. S. History 10; Social Studies 12; Football and Baseball Coach; Athletic Director.

DAGMAR DAHL

Grade 5.

ALVIN FLOM

Grade Music; Band; Glee Club; Mixed Chorus; Audio-Visual Aid.

LOUISE KIPP

Math 7, 8, 9; Algebra 9; Centralian Advisor; 8th Grade Advisor.

DOREEN KLOTH

Grade 1.

JEROME KOENIG

English 9; Social 9; Speech; Junior and Senior Class Plays; Declamation.

CONSTANCE KRATZKE

Grade 6; Elementary Principal

MARLYS LINDERT

Grade 2.

WILLIAM LORENZ

English 11, 12; Track Coach; Ass't Football Coach; Ass't Basketball Coach.

BERNADINE MEYER

School Secretary.



CO-PILOTS

# CO-PILOTS

ROLAND RANZINGER

Social 7, 8; English 7, 8; General Science 7, 8; School Patrol; 7th Grade Advisor.

MARLENE RONNINGEN

English 9, 10; Girls Phy. Ed. and Health 7, 8, 9, 10; Cheerleader Advisor; 10th Grade Advisor.

ELIZABETH SCHAFER

Home Economics; Junior Advisor.

GLENN SIMONSON

Consumer Education; Typing; Boys Phy. Ed. and Health 7, 8, 9, 10; Smoke Signals Advisor; Health Director; Junior High Athletic Coach.

ROSAMUND STIEWE

Grade 4.

LORRAINE STEUCK

Stenography; Bookkeeping; Typing.

MARGARET THORESON

Grade 3.

CLIFFORD THORESON

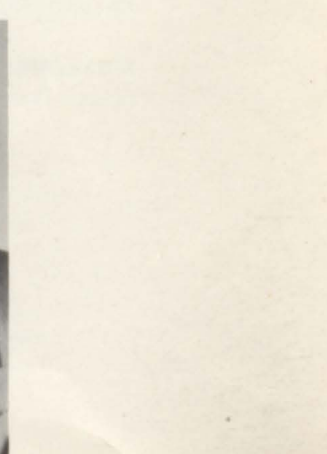
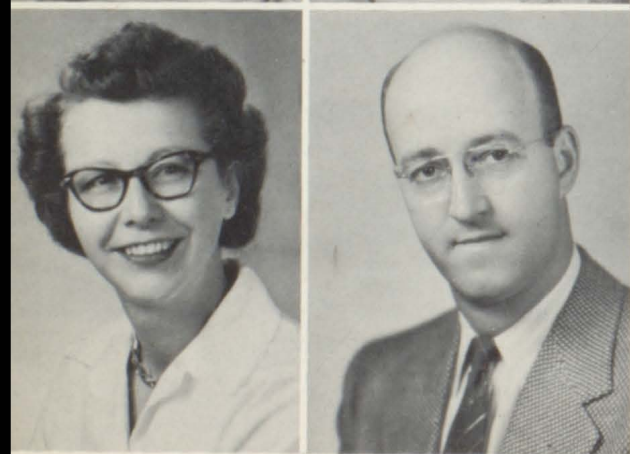
Vocational Agriculture; F.F.A.

LEN TURULA

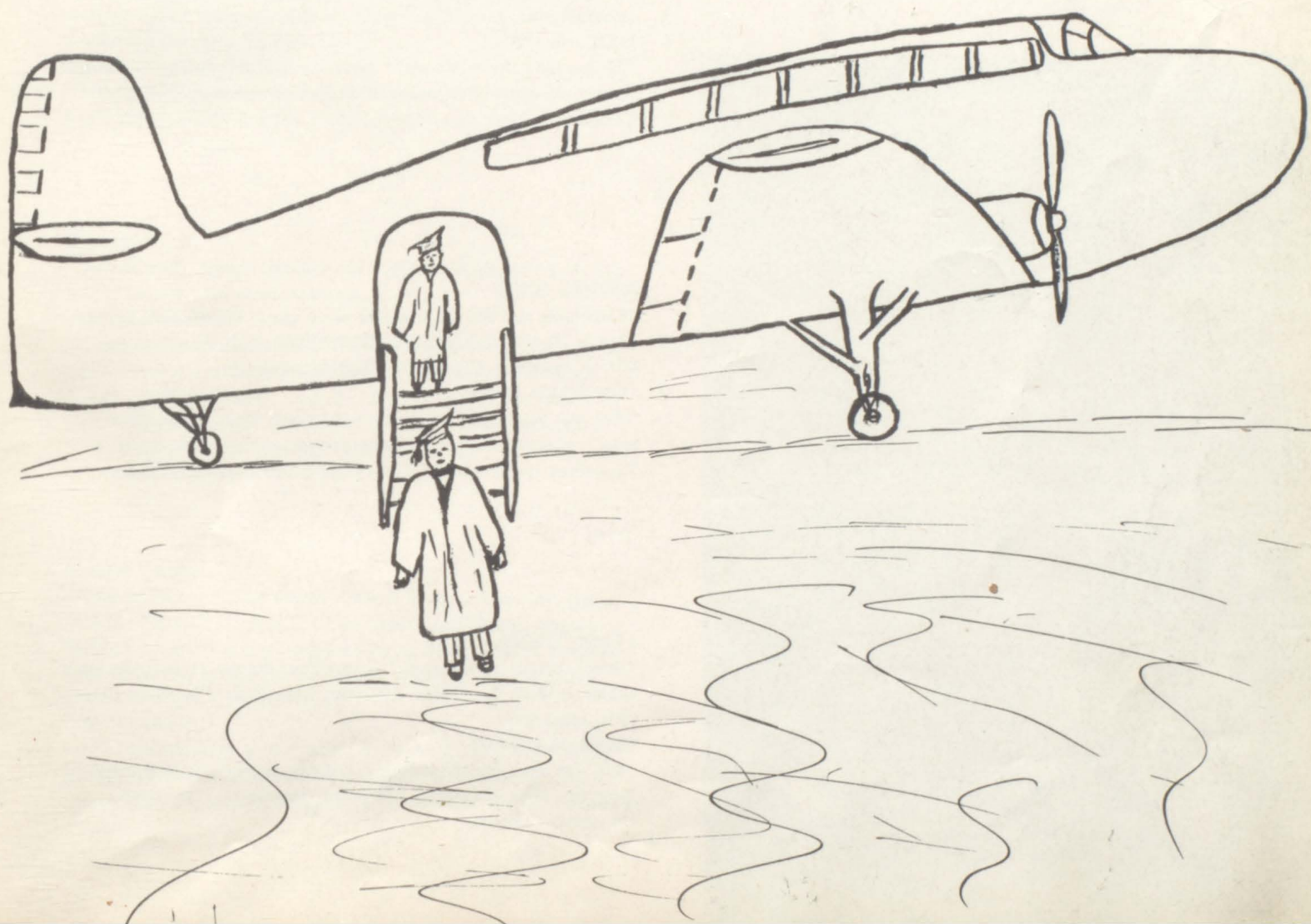
Industrial Arts.

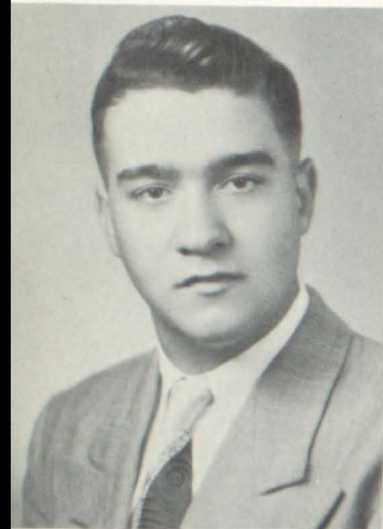
CLIFFORD WOLD

History 11; Librarian.



L A N D I N G





## SENIORS

KENNETH BOVY

"We thought women were the only ones that gabbed!" Band; Spring Concert; F.F.A.; Mixed Chorus; Christmas Concert.

ARLENE BRAUN

"A still, small voice." Spring Concert; Office Assistant; Glee Club; Christmas Concert.

DAVID CARLSON

"His smile goes all the way around and buttons in the back." Basketball; Baseball; C Club; Centralian; Variety Program; Football Manager.

DARLENE DIETEL

"Who spiked my Wheaties?" Band; Centralian; Spring Concert; Variety Program; Projectionist Club; Glee Club; Christmas Concert.



PHYLLIS EIDEN

"Sweetness and fun all wrapped up in one." Centralian; Smoke Signals; Spring Concert; Variety Program; F.H.A.; G. A. A.; Office Assistant; Glee Club; Christmas Program.

LOIS ENGELMANN

"This gal has her future plan, and I think that it includes a man." Centralian; Spring Concert; Variety Program; Band Vice-Pres. Projectionist Club; Glee Club; Christmas Concert.

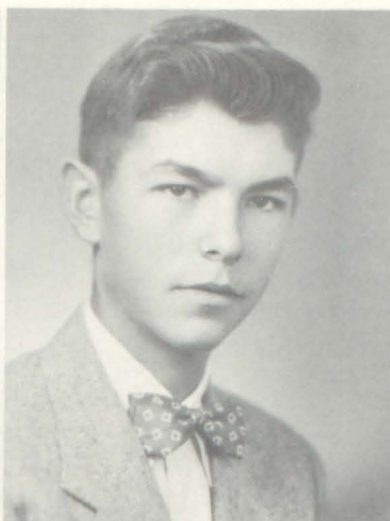


LYNNE ENGEN

"Don't disturb my dreams." Centralian; Smoke Signals; Spring Concert; G. A. A.; Office Assistant; Glee Club; Christmas Concert; Librarian.

EMMA FLANNERY

"She was once caught studying." Band; Spring Concert; Variety Program; Speech Contest; Librarian; Majorette; Glee Club; Christmas Concert.



#### DONNA MAY FLUSEMANN

"I may be quiet in school, but that doesn't mean much." Band; Spring Concert; Variety Program; Projectionist Club; Glee Club; Christmas Concert.

#### ALVIN GOHLKE

"A powerful package of dynamite." F.F.A.; Mixed Chorus; Christmas Concert.

#### ALMEDA GUETHLING

"She hasn't much to say, but she thinks a lot each day." Centralian; Spring Concert; Variety Program; Glee Club; Christmas Concert; Band; Old Time Band.

#### ELAINE GUTZKE

"Although I'm not so very tall, I'd rather be short than not at all." Spring Concert; Glee Club; Christmas Concert.

1954

#### LYMAN HAAG

"Do you mean there's another car besides a Pontiac!" F.F.A.; Mixed Chorus; Christmas Concert.

#### LAVONNE HALLORAN

"Mighty sweet, mighty wise, the fun just twinkles in her eyes." Junior Class Play; Class Vice-President; Centralian; Smoke Signals; Spring Concert; G.A.A.; Variety Program; Speech Contest; G.A.A. Sports Manager; Office Assistant; Mixed Chorus; Glee Club; Christmas Concert.

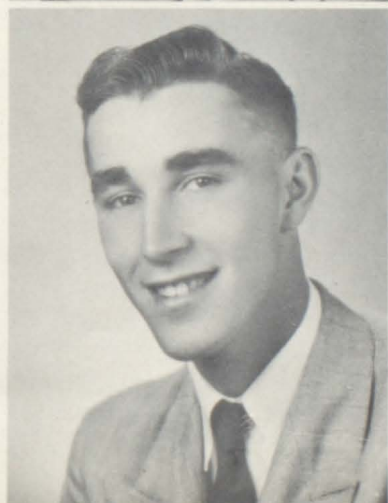


#### JOSEPH HANSEL

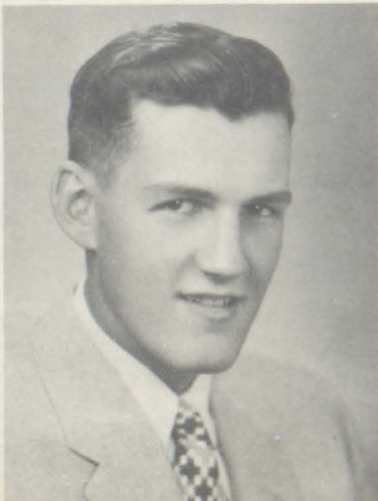
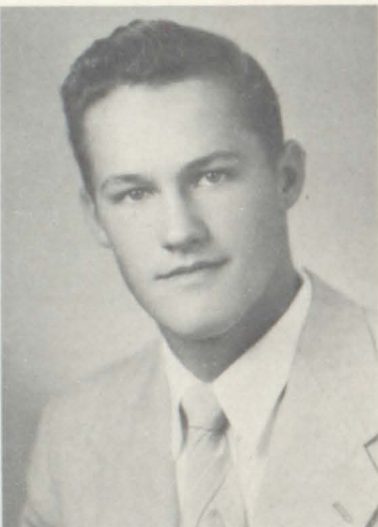
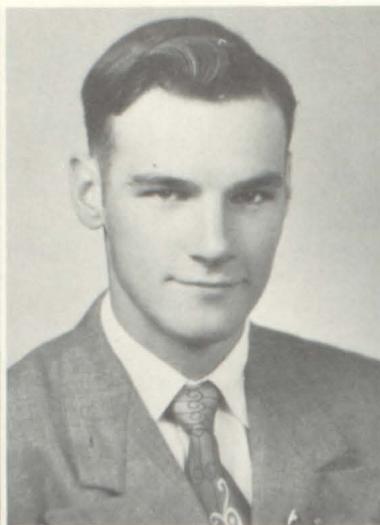
"A speed demon at the wheel." Band; Junior Class Play; Basketball; Football; Track; C Club; Centralian; Smoke Signals; Spring Concert; Variety Program; Swing Band; Speech Contest; Band Manager; Mixed Chorus; Projectionist Club; Old Time Band; Christmas Concert; Soloist.

#### CARY HARTWIG

"Mr. Touchdown C.H.S." Band; Basketball; Football; Track; All Conference; C Club; Old Time Band; Projectionist Club; Spring Concert; Variety Program; Homecoming Escort; Christmas Concert.



# SENIORS



## LOWELL HERRMANN

"Why study, my time is valuable." Band; Spring Concert; Variety Program; F.F.A.; Mixed Chorus; Christmas Concert.

## MARILYN HILGERS

"Generally speaking, she's generally speaking." Class Vice-President, 1; Smoke Signals; Spring Concert; Variety Program; Homecoming Attendant; F.H.A.; F.H.A. Parliamentarian; G.A.A.; G.A.A. Vice-President; Cheerleader; Office Assistant; Projectionist Club; Mixed Chorus; Glee Club; Christmas Concert.

## BERNARD HOEN

"All great men are dying and I'm not feeling well myself." Class Sec. -Treas.; Basketball; Track; C Club; Centralian; Smoke Signals; Basketball Student Manager; Homecoming Escort; Class Play Prompter; Projectionist Club; Mixed Chorus; Christmas Concert.

## CAROL HOEN

"Like a teakettle, she's always bubbling over." Smoke Signals; Spring Concert; Variety Program; Librarian; Band Librarian; F.H.A.; Office Assistant; Mixed Chorus; Christmas Concert; Glee Club.

## GERALD HONEBRINK

"I tried to be good, but everyone led me astray." Junior Class Play; Class President; Basketball; Football; Baseball; Track; C Club; Smoke Signals; Student Council; Student Council Pres.; Student Council Vice-Pres.; Homecoming King.

## MYRON HOOF

"Don't rush me girls." Junior Class Play; Baseball; Track; F.F.A.; Student Council; Spring Concert; Speech Contest; F.F.A. Treas.; Mixed Chorus; Christmas Concert.

## GLADYS ISCHE

"Being a girl is terribly difficult when it consists of dealing with boys." F.H.A.; Centralian; Smoke Signals; Spring Concert; Variety Program; Office Assistant; Mixed Chorus; Projectionist Club; Glee Club; Christmas Concert.

## DONALD JORISSEN

"You can't keep a good man down, not even in height." Basketball; C Club; Football; Baseball; Centralian; Smoke Signals; Student Council; Variety Program; Projectionist Club.



#### PATRICIA KEHRER

"A quiet girl with a smile so sweet, a nicer girl you'll never meet." Junior Class Play; Centralian; Smoke Signals; Spring Concert; Variety Program; G.A.A. Mixed Chorus; Glee Club; Centralian Editor; Christmas Concert.

#### CAROL MAE KLEMP

"Really it's not necessary to understand things to argue about them." Band; Junior Class Play; Centralian; Smoke Signals; Spring Concert; Variety Program; Speech Contest; Class Play Prompter; Band Sec.; Office Assistant; Projectionist Club; Old Time Band; Swing Band; Mixed Chorus; Glee Club; Christmas Concert.

#### MARLENE KLOEMPKEN

"She seems quiet in her way, but wait till she gets started." Band; Spring Concert; Variety Program; Band Sec.; Glee Club; Christmas Concert.

#### ARLYS KRAMER

"She can't think of two things at once, so she thinks of him." Band; Class Sec. - Treas. 3; Centralian; Smoke Signals; Spring Concert; Variety Program; Homecoming Attendant; F.H.A.; G.A.A.; Mixed Chorus; Glee Club; Christmas Concert.

#### RAMONA KROELLS

"What she ain't got she don't need." Band; Smoke Signals; Spring Concert; Variety Program; Librarian; Projectionist Club; Glee Club; Christmas Concert.

#### WALLACE KROELLS

"I've served my term - Good-by." Spring Concert; F.F.A.; Mixed Chorus; Christmas Concert.

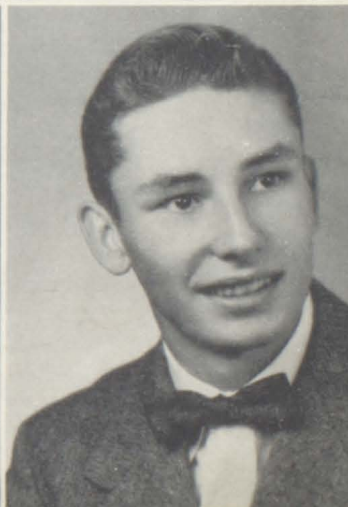
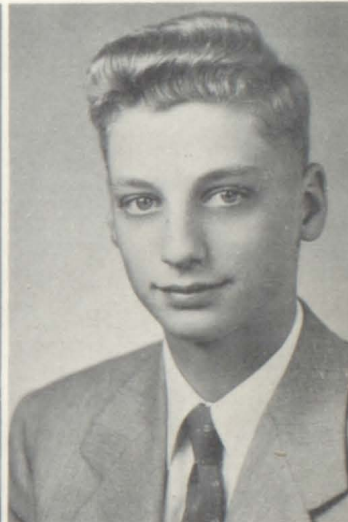
#### LAYTON LEMKE

"Life is fun when there are women in it." Basketball; Centralian; Spring Concert; Mixed Chorus; Christmas Concert.

#### RICHARD LINDEMEIER

"Not so serious as one may think." Basketball; Football; Track; C Club; Smoke Signals; Spring Concert; Homecoming Escort; Mixed Chorus; Christmas Concert.

1954



# SENIORS



ROLAND LINS

"Going to heaven on an 807 (radio tube)." Centralian; Smoke Signals.

HARLAN MACKENTHUN

"There must be a lot of work in him, for none has ever come out." Band; F.F.A.; Projectionist Club; Mixed Chorus; Spring Concert; Christmas Concert.

JEANNE MENDEN

"I ask nothing for myself, but please give mother a son-in-law." Band; Centralian; Spring Concert; G.A.A.; Christmas Concert; Variety Program; Office Assistant; Old Time Band; Glee Club.

LAMOYNÉ MENTH

"What's better than being in love?" Band; Spring Concert; Christmas Concert; Variety Program.



ROBERT MESENBRING

"He has a knack for getting out of study halls." Basketball; Baseball; C Club; Basketball Student Manager; Football Student Manager; Christmas Concert; Junior Class Play Stage Manager.

YVONNE MUMM

"My next chapeau, a nurses cap." Junior Class Play; Class President; Class Sec. -Treas.; Centralian; Smoke Signals; Student Council; Spring Concert; Variety Program; Speech Contest; Homecoming Attendant; F.H.A.; G.A.A.; Mixed Chorus; Glee Club; Christmas Concert; Office Assistant.

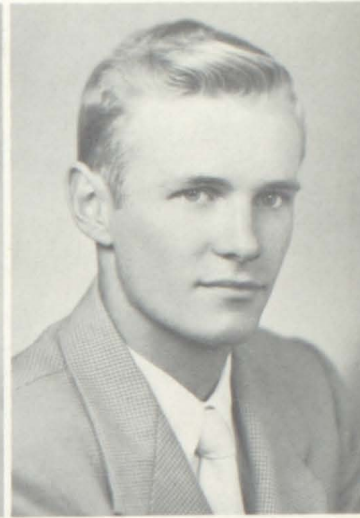


SHIRLEY NELLEN

"When it comes to clothes, she's on her toes." Centralian; Smoke Signals; Spring Concert; Variety Program; F.H.A. Vice President; G.A.A.; Cheerleader; Office Assistant; Projectionist Club; Mixed Chorus; Glee Club; Christmas Concert; Librarian

MARTHA PANNING

"Those innocent blue eyes." Centralian; Spring Concert; Variety Program; Projectionist Club; Glee Club; Christmas Concert.



1954

SHIRLEY PEDERSEN

"There are no cobwebs in her attic." Junior Class Play; Class Vice-President; Centralian; Smoke Signals; Spring Concert; Variety Program; Speech Contest; Class Play Prompter; G.A.A.; Projectionist Club; Mixed Chorus; Glee Club; Christmas Concert.

JOANNE PETERSON

"Short and sweet and hard to beat." Centralian; Spring Concert; Variety Program; Class Play Prompter; Librarian; G.A.A.; G.A.A. Sports Manager; Glee Club; Mixed Chorus.

SHIRLEY ROEPKE

"The better we know her the better we like her." Attended Stewert High School for first three years.

MAYNARD ROLF

"What I've been taught I've forgotten, and what I know I've guessed at." Junior Class Play; Football; Baseball; Track; Student Council; Homecoming Escort.

SHIRLEY SCHENSE

"A ring on the finger is worth two on the phone." Centralian; Spring Concert; Variety Program; Speech Contest; Mixed Chorus; Glee Club; Christmas Concert.

MARILYN SCHMIDT

"Her laugh is her password." Spring Concert; Variety Program; Mixed Chorus; Glee Club; Christmas Concert.

JEANETTE SCHMITZ

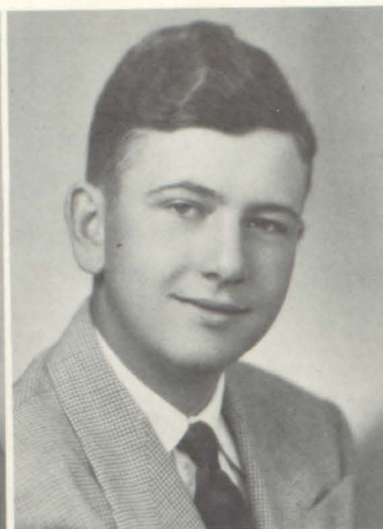
"If she can't find anything to laugh about she just giggles." Smoke Signals; Spring Concert; Variety Program; Librarian; Band Librarian; F.H.A.; Glee Club; Christmas Concert.

MAXINE SCHNEEWIND

"In spite of all her glory, her shoes always fit." Junior Class Play; Class Vice-President; Centralian; Smoke Signal; Spring Concert; Variety Program; Homecoming Queen; F.H.A.; Homecoming Attendant; F.H.A. Prés.; G.A.A. Secretary; Cheerleader; Office Assistant; Swing Band; Projectionist Club; Glee Club; Old Time Band; Christmas Concert; Mixed Chorus.



# SENIORS



DALE SCHNEIDER

"Continually studying -- the road to Norwood." Football; Baseball; C Club; Centralian; Smoke Signals; Football Student Manager; C Club Secretary.

SHIRLEY SCHNEIDER

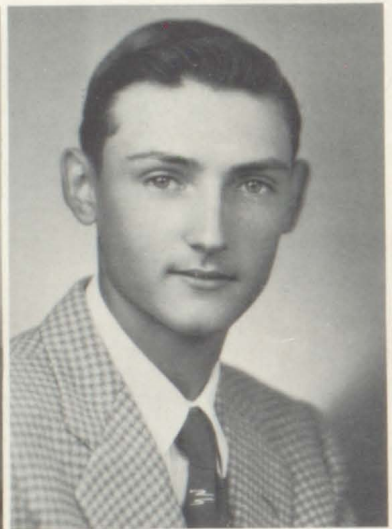
"She wears a smile that won't come off." Class Secretary; Centralian; Spring Concert; Variety Program; Homecoming Attendant; Librarian; G.A.A.; Projectionist Club; Mixed Chorus; Glee Club; Christmas Program.

LEONARD SCHUETTE

"Men who know much, say little." Centralian; Spring Concert; Variety Program; Mixed Chorus; Christmas Concert.

PHYLLIS SCHUETTE

"What's better than being in love." Centralian.



HARVIN SMITH

"Has sighed at many, but has loved only one." Band; Class Treasurer; Spring Concert; F.F.A.; F.F.A. Treas.; Projectionist Club; Mixed Chorus; Christmas Concert.

THOMAS SOMS

"Silent energy moves the world." Spring Concert; Mixed Chorus; Christmas Concert.



ELEANOR THOMAS

"As loyal as the school day is long." Band; Junior Class Play; Class President; Centralian; Smoke Signals; Student Council; Spring Concert; Variety Program; Speech Contest; Band Treas.; F.F.A.; G.A.A.; Projectionist Club; Mixed Chorus; Glee Club; Christmas Concert; Girl's State Representative.

MARY ANN TROCKE

"She has a pleasing way about her." Spring Concert; Glee Club; Christmas Concert.



**DARLENE WENDLANDT**

"In her manner, lies her charm." Band; Centralian; Smoke Signals; Spring Concert; Variety Program; Librarian; Band President; Band Secretary; G.A.A.; Projectionist Club; Mixed Chorus; Glee Club; Christmas Concert.

**PAUL WICHENHAUSER**

"A man that blushes is better than one who turns pale." F.F.A.; Transferred from Waconia.

**MARLENE WILL**

"Never posing or pretending, but all herself." Smoke Signals; Spring Concert; Variety Program; Librarian; G.A.A.; Office Assistant; Projectionist Club; Glee Club; Christmas Concert.

**LINDA WHERLEY**

"Her eyes are always laughing." Spring Concert; Variety Program; Class Play Prompter; Glee Club; Christmas Concert.

**DUANE WOLFF**

"When I feel like studying, I lie down and sleep it off." Football; Baseball; C Club; Homecoming Escort.

1954

**CLASS MOTTO**

To see farther one must rise higher.

**CLASS COLORS**

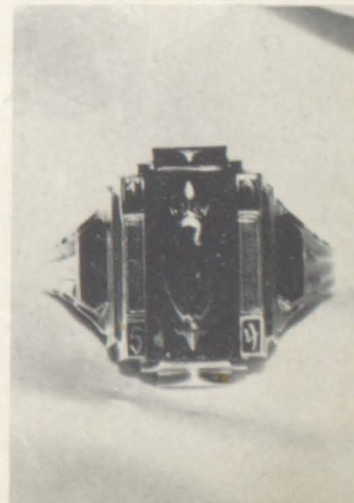
Navy blue and white

**CLASS FLOWER**

White orchid

**CLASS ADVISERS**

Mr. Maurine and Mr. Flom



# The Unanimous Declaration

OF THE SENIOR CLASS OF 1954, C.H.S.

When in course of school events, it becomes necessary for the Senior Class to dissolve the educational bonds which have connected it to the other classes, and to assume the duties of citizenship for which their school life has prepared them, a decent respect to the opinion of the other classes requires that they should transcribe this history leading up to their graduation.

We, the Senior Class of 1954, entered the halls of C.H.S. in the fall of 1950, feeling a bit apprehensive but eager to begin our higher education. Our class congress elected Gerry Honebrink, President; Marilyn Hilgers, Vice-President; Shirley Schneider, Secretary; and Harvin Smith, Treasurer. As our class representative for Homecoming we chose David Ugland and Lois Engelmann. We gave the Sophomore Class a weiner roast in return for our initiation ceremony.

As our second session convened, we elected as class officers Gerry Honebrink, President; Lavonne Halloran, Vice-President; Yvonne Mumm, Secretary-Treasurer; and Myron Hoof, Student Council Representative. Don Jorissen and Shirley Schneider our Homecoming attendants. That fall we initiated our green freshman, and accepted their invitation to a Roller Skating Party.

As Junior statesman, we began our third session by electing Eleanor Thomas, President; Shirley Pedersen, Vice-President; Arlys Kramer, Secretary-Treasurer; and Gerry Honebrink and Maxine Schneewind, Student Council Representatives. Homecoming attendants were Cary Hartwig and Maxine Schneewind. On November 20 and 21, 1952, we presented "The Inner Willy," as our class play. To climax our third session we presented a Banquet and Prom for the Senior Class.

Taking our honored places as Senior statesman, we chose Yvonne Mumm, President; Maxine Schneewind, Vice President; Bernie Hoen, Secretary-Treasurer; and Gerry Honebrink, Maynard Rolf, and Don Jorissen, Student Council Representatives. Our 1953 Homecoming King and Queen were Gerry Honebrink and Maxine Schneewind, respectively. At Christmas we sponsored a Sno-Ball. We also accepted an invitation to the annual Junior-Senior Prom.

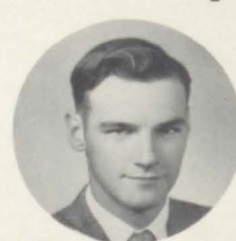
Our final sessions ended May 26, 1954, when each loyal statesman received his diploma, and bade one another a fond adieu.



Yvonne Mumm  
PRESIDENT



Maxine Schneewind  
VICE-PRESIDENT



Bernie Hoen  
SECRETARY-TREASURER

# LAST WILL AND TESTAMENT

We, the class of nineteen hundred and fifty-four, being of sound mind and body, declare this to be our last will and testament, to be read on the 9th day of May.

KENNY BOVY wills his deep voice to Roger Kamman. ARLENE BRAUN wills her quiet ways to Bob Bailey. DAVID CARLSON wills his sense of humor to Bill Tuebert. DARLENE DIETEL wills her typing ability to LaVonne Stender. PHYLLIS EIDEN wills her cute dimples to Barbara Graunke. LOIS ENGELMANN wills her diamond to Darlene Panning. EMMA FLANNERY wills her ability to talk about anything to anybody, to Bill Bartz. DONNA FLUSEMANN wills the braids she had in 8th grade to Carolyn Harjes. ALVIN GOHLKE wills his talent for testing milk to Wallace Herrmann. ALMEDA GUETHLING wills her coronet to Curtis Brueshoff. ELAINE GUTZKE wills her bobby pins to Marlys Gilster. LYMAN HAAG wills his yellow convertible to Martin Dittmar. LAVONNE HALLOREN wills her interest in the alumni to Deanna Oelfke and Janelle Perbix. JOE HANSEL wills his way with the girls to Ray Hoernemann and Elroy Koepp. CARY HARTWIG wills his all-conference award to Bill Bury. LOWELL HERRMANN wills his nickname "Peanuts" to Bob Radunz. MARILYN HILGERS wills her ability to crack gum to Evelyn Hohl. BERNIE HOEN wills his pleasant personality to Ralph Herrmann and Kenny Kroells. CAROL HOEN wills her morning and night rides on the Cologne bus to Joel Wirtz. GERRY HONEBRINK wills his ability to grow a beard to Ronnie Mumm. MYRON HOOF wills his absence slips to Bonnie Kamann. GLADYS ISCHE wills her pretty clothes to Caroline Klaustermeier and Phyllis Schmitz. DON JORISSON wills his pitching arm to Harlan Wilkens. PATTY KEHRER wills her ability to hold onto one guy to Carol Oelfke and Lovera Sellnow. CAROL KLEMP wills her many talents to LaVern Lange and Lowell Kohls. MARLENE KLOEMPKEN wills her nights out to Norma Holste. ARLYS KRAMER wills her attendance at all sports events to Dorothy Lueck. RAMONA KROELLS wills her pretty complexion to LaVonne Mueller. WALLACE KROELLS wills his overflow of ambition to Gerald Schimelpfenig. LAYTON LEMKE wills his nickname to Delford Beneke. DICK LINDEMEIER wills his rides to school every morning to Mary Lou Teubert. ROLLIE LINS wills his ability to talk his way out of everything to Ornelle Perbix and Roger Wolter. HARLAN MACKENTHUN wills his note writing ability to Harlan Seck. JEANNE MENDEN wills her teasings from Mr. Braun to Lois Kohls. LaMOYNE MENTH wills her leopardskin blouse to Lois Miller. BOB MESENBRING wills his keys to the coaches' office to Bob Effertz. YVONNE MUMM wills her brother, Ronnie, to Roland Latzig. SHIRLEY NELLEN wills the shift handle of her jalopy to Ronnie Smith. MARTHA PANNING wills her evenings at New Germany and Hamburg to Mrytle Thaemert. SHIRLEY PEDERSON wills her nickname, "Cutie", to Vernetta Wischnack. JOANNE PETERSON wills her mammoth structure to Richard Smith. SHIRLEY ROEPKE wills her ponytail to Billy Schroeder. MAYARD ROLF wills his muscles to Eldred Loehrs. SHIRLEY SCHENSE wills her trips to the Norwood Post Office to Marceline Oestreich. MARILYN SCHMIDT wills her pretty blush to Carmen Lieske. JEANETTE SCHMITZ wills her membership in the 2 o'clock club to Joan Mueller. MAXINE SCHNEEWIND wills her Homecoming crown to Dale Zinke. DALE SCHNEIDER wills his "shooting eye" to Ronny Stahlke. SHIRLEY SCHNIEKER wills her flirting ways to Ruth Ziermann. LEONARD SCHUETTE wills his brain capacity to Charles Zellmann. PHYLLIS SCHUETTE wills her fun in speech class to Carol Winkler. TOMMY SONS wills his lonely ride to school to Roger Wolter. ELEANOR THOMAS wills the fun she had at Girl's State to Evonne Stender. MARY ANN TROCKE wills her mathematical mind to Clifford Zellmann. DARLENE WENDTLANDT wills her presidency of the band to JoAnne Mueller. PAUL WICKENHAUSER wills his curly hair to Joanne Willems. MARLENE WILL wills her short walking distance to "Lydie's" to Pat Bergmann. LINDA WHERELY wills her bright, sparkling eyes to Harlan Kugath. DUANNE WOLFF wills his ability to ruin suits to Walter Oelfke and Lothar Wolter. LYNNE ENGEN wills her surplus dates to Eileen Ische.

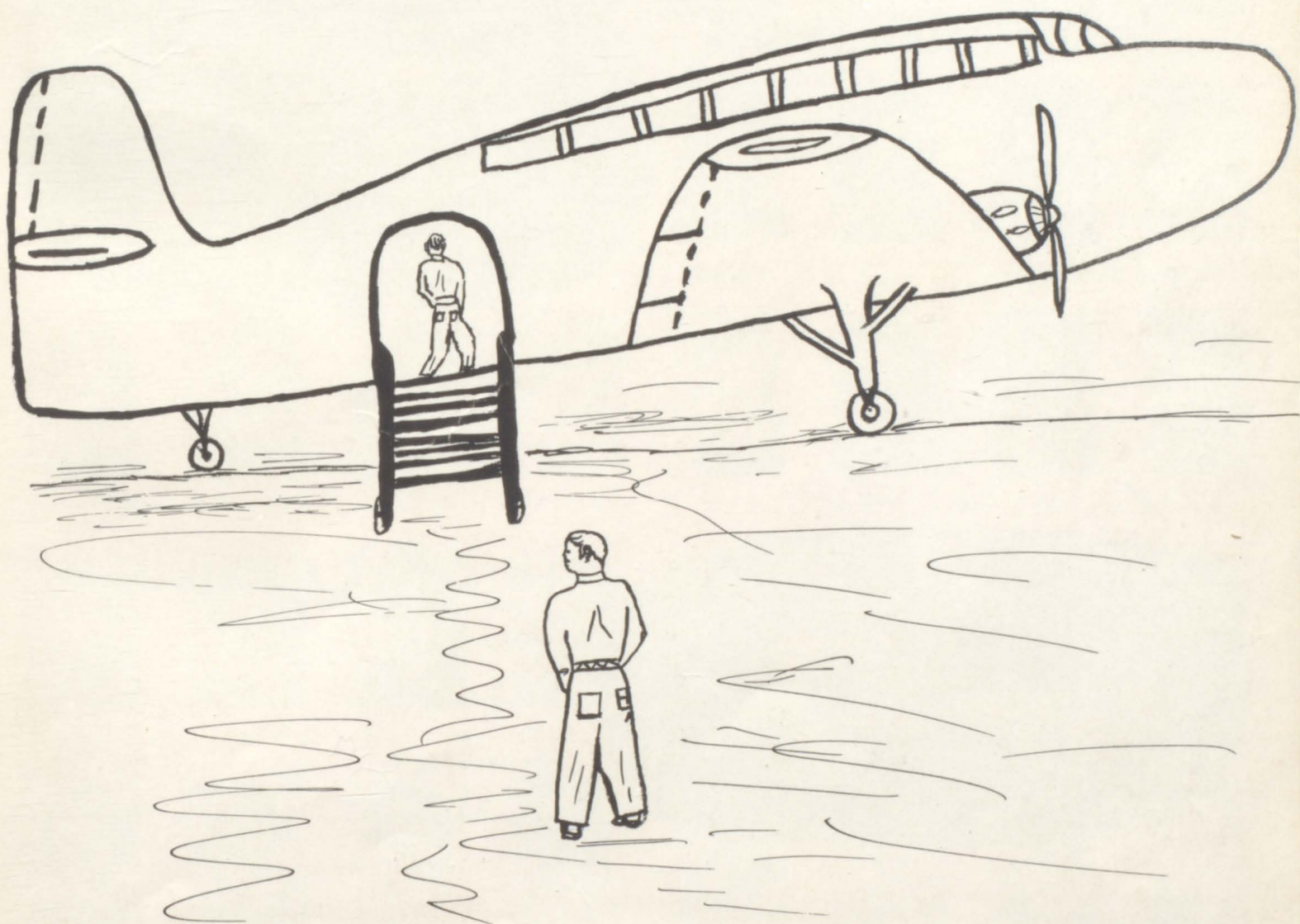
# PREDICTIONS

ARLENE BRAUN  
KENNETH BOVY  
DAVID CARLSON  
DARLENE DIETEL  
PHYLLIS EIDEN  
LOIS ENGELMANN  
DONNA LYNNE ENGEN  
EMMA FLANNERY  
DONNA FLUSEMANN  
ALVIN GOHLKE  
ALMEDA GUETHLING  
ELAINE GUTZKE  
LYMAN HAAG  
LAVONNE HALLORAN  
JOE HANSEL  
CARY HARTWIG  
LOWELL HERRMANN  
CAROL HOEN  
BERNIE HOEN  
MARILYN HILGERS  
GERRY HONEBRINK  
MYRON HOOF  
GLADYS ISCHE  
DON JORISSEN  
PAT KEHRER  
CAROL KLEMP  
MARLENE KLOEMPLER  
ARLYS KRAMER  
RAMONA KROELLS  
WALLACE KROELLS  
LAYTON LEMKE  
RICHARD LINDEMEIER  
ROLAND LINS  
HARLAN MACKENTHUN  
JEANNE MENDEN  
BOB MESENBRING  
LAMOYNE MENTH  
YVONNE MUMM  
SHIRLEY NELLEN  
MARTHA PANNING  
SHIRLEY PEDERSON  
JO ANNE PETERSON  
SHIRLEY ROEPKE  
MAYNARD ROLF  
SHIRLEY SCHENSE  
MARILYN SCHMIDT  
SHIRLEY SCHNEIDER  
DALE SCHNEIDER  
JEANETTE SCHMITZ  
  
PHYLLIS SCHUETTE  
LEONARD SCHUETTE  
THOMAS SONS  
HARVIN SMITH  
MAXINE SCHNEEWIND  
ELEANOR THOMAS  
MARY ANN TROCKE  
DARLENE WENDLANDT  
LINDA WHERLEY  
PAUL WICKENHOUSER  
MARLENE WILL  
  
DUANE WOLFF

DREAMS TO BE:  
Secretary  
Worker in St. Paul  
Sailor  
Office worker  
Secretary  
Office worker  
World traveler  
Office worker  
Secretary  
Farmer  
T. C. graduate  
Office worker  
Court reporter  
Feature writer  
Truck driver  
Carpenter  
Farmer  
Nurse  
Butcher  
Nurse  
Coach  
Farmer  
Missionary Nurse  
Retired  
Nurse  
Teacher  
Office worker  
Nurse  
Office worker  
Farmer  
Architect Engineer  
College graduate  
St. Thomas graduate  
Farmer  
Secretary  
Dunwoody graduate  
Secretary  
Nurse  
Interior Decorator  
Office worker  
Elementary teacher  
Stenographer  
Secretary  
Has no idea  
Stenographer  
Worker in Minneapolis  
Nun  
Mechanic  
Nurse  
  
Secretary  
Farmer  
Mechanic  
Farmer  
Deaconess  
Elementary teacher  
Stenographer  
Nurse  
Interior Decorator  
Farmer  
Nurse  
  
Farmer

BECOMES:  
Writer of Love-lorn column.  
Tobacco Auctioneer.  
Author of "My Favorite Jokes."  
Double for Kate Smith.  
"Fearless Phyllis", woman wrestler.  
Diamond manufacturer.  
Lighthouse keeper.  
Brain surgeon.  
Chief of police women at Bongards.  
Doughnut froster.  
Missionary to Afghanistan.  
Coach of Gutzke's Five Mighty Midgets.  
Pro-basketball player.  
Shakespearian actress.  
Trumpet player for Spike Jones.  
Water boy for Greenbay Packers.  
Popcorn seller at the Alvin.  
Butcher at Minnesota Rendering Company.  
Street car conductor.  
Gum chewing champion 55' 56'.  
Authority on Burma Shave Signs.  
Proof reader for Esquire.  
Bathing suit model.  
Embalmer.  
Promoter of Norwood-Cologne relations.  
Palm reader.  
Hair stylist for Mamie Eisenhower.  
Wife of All-American football player.  
Director of Minnesota School of Business.  
Receptionist at Quast Funeral Home.  
Girls' swimming coach.  
Flute tuner.  
Promoter of "Rolly Dolly's Posey Shop."  
Minister.  
Hostess at Athletic Club.  
Justice of Peace.  
Speech director.  
Laughing gas processor.  
Ice Follies star.  
Waitress at "Smiths".  
Congresswoman.  
Big game hunter.  
Max Factor Demonstrator  
Owner of escort agency.  
Wife of Army General.  
Bridal Consultant at Daytons.  
Hat check girl.  
Busline between Norwood and Cologne.  
Author of "Ten Easy Ways to Stop Giggling."  
"Leaf" collector  
Professor at Yale.  
Owner of Milk Bar.  
Revisor of the Opera "Martha."  
Cheerleading instructor at Harvard.  
Champion bowler.  
Farmer's wife.  
Head jockey at San Anita Race Track.  
Caterer at weddings.  
Cheerleader at Vasser.  
Instructor at Murray's School of Dancing  
Bachelor Accountant.

# TAKE OFF



# CLASS OFFICERS



## JUNIOR CLASS OFFICERS

Bonnie Kamann . . . . . Pres.  
Joel Wirtz . . . . . V. Pres.  
Joanne Mueller. . . . . Sec'y.  
Darlene Panning . . . . . Treas.

## SOPHOMORE CLASS OFFICERS

Curtis Wolter . . . . . Pres.  
Sharon Gust . . . . . V. Pres.  
Mary Ann Mertz . . . . . Sec'y.  
Bob Schepers . . . . . Treas.



## FRESHMAN CLASS OFFICERS

Donald Weibel . . . . . Pres.  
Donald Rolf . . . . . V. Pres.  
LeAnn Franck . . . . . Sec'y.  
Betty Bentz . . . . . Treas.



# JUNIOR CLASS



B. Bailey



W. Bartz



D. Beneke



P. Bergmann



C. Bruesehoff



M. Dittmar



R. Effertz



M. Gilster



C. Harjes



R. Herrmann



R. Hoernemann



E. Hohl



W. Holste



E. Ische



B. Kamann



R. Kamann



C. Klostermeier



E. Koepp



L. Kohls



L. Kohls



K. Kroells



H. Kugath



L. Lange



R. Latzig



C. Leiske



E. Loehrs



D. Lueck



L. Miller



J. Mueller



H. Mueller



L. Mueller



R. Mumm



C. Oelfke



D. Oelfke



W. Oelfke



M. Oestrich



D. Panning



J. Perbix



O. Perbix



R. Radunz



G. Schimelpfenig



P. Schmitz



W. Schroeder



H. Seck



L. Sellnow



R. Smith



R. Smith



R. Stahlke



E. Stender



L. Stender



M. Teubert



W. Teubert 21



H. Wilkens



J. Willems



C. Winkler



J. Wirtz



V. Wischnack



D. Wolter



L. Wolter



R. Wolter



C. Zellman



C. Zellman



R. Zierman



D. Zinke

## SOPHOMORE CLASS



R. Bergmann



M. Bollmann



C. Bongar



J. Braunwarth



M. Brelje



J. Brown



D. Buckentlin



E. Burkowski



D. Bussmann



H. Cebulla



D. Demm



D. Effertz



J. Fiebelkorn



J. Flusemann



W. Franck



N. Freter



A. Goede



B. Groenke



S. Gust



E. Haag



I. Haaskens



M. Harms



D. Hedtke



J. Hedtke



E. Herrmann



R. Hieland



L. Hinn



J. Hoen



P. Hron



J. Jaekel



C. Jorissen



C. Kranz



D. Kranz



E. Lemke



M. Lindemeier



R. Lins



C. Lewis



B. Luedloff



M. McKim



M. Mackenthun



B. Menden



J. Menzel



M. Mertz



L. Miller 22



C. Mueller



L. Nellen



W. Nemes



C. Nierengarten



J. Noennig



M. Noerenberg



B. Oelfke



R. Oelfke



S. Pedersen



C. Pieper



C. Rolf



G. Sauter



R. Schepers



G. Schmidt



A. Schroeder



E. Schrupp



K. Schrupp



W. Siewert



D. Stender



S. Stender



L. Tellers



D. Troeke



M. Troeke



J. Waetjen



B. Wickenhauser



C. Wolter



M. Wuetherick



V. Zellmann



L. Zieper

#### CAMERA SHY

JUNIORS: Bill Bury, Barbara Graunke, Wallace Herrmann, Joan Mueller, Mrytle Thaemert.  
SOPHOMORES: Loralie Brecht, Richard Graunke, Dale Groenke, Arthur Hilgers, Bertha Schrupp,  
Shelbe Schrupp.

## FRESHMAN CLASS



M. Bailey



D. Barlau



D. Barlau



G. Barlau



D. Bartz



B. Bentz



E. Boyle



J. Braunwarth



M. Cordell



D. Dietel



J. Emick



O. Feltmann



L. Franck



J. Fritz



C. Gohlke



B. Graupmann



L. Groenke



H. Gutzke



S. Hedtke



H. Heimkes



S. Herrmann



D. Hoen



V. Holste



S. Hoof



A. Ische



D. Ische



J. Karels



D. Klaustemeier



E. Klostermeier



L. Klemp



D. Klobe



A. Kroells



D. Kroells



A. Kruegar



L. Latzig



W. Leikam



F. Lobitz



M. Mackenthun



R. Meuwissen



W. Muelich



D. Mueller



M. Otto



V. Pawelk



B. Ranzinger



G. Rick



D. Rolf



M. Schepers



A. Schoewe



B. Schlueter



N. Schneider



H. Schrupp



J. Sellnow



G. Siewert



R. Siewert



G. Smith



R. Sons



A. Stender



S. Stender



D. Stock



D. Stuewe



C. Tellers



L. Telthoester



L. Thran



H. Trick



D. Weibel



W. Wickelmann



J. Wickenhauser



L. Wildung



K. Wilkens



E. Winkler



P. Wischnack



D. Wolter



D. Wolter



C. Wolter



L. Zehnder

# SEVENTH AND EIGHTH GRADES



J. Bergmann



L. Bohnen



B. Boyle



B. Brown



T. Bury



S. Clay



D. Effertz



D. Feltmann



G. Feltmann



D. Franck



H. Fruetel



H. Haag



K. Happ



C. Heinisch



E. Heinisch



M. Hedtke



L. Kamann



T. Klobe



L. Lemke



D. Mielke



B. Nemes



D. Pawelk



A. Sauter



N. Schimmelpfennig



K. Schoewe



R. Stoltz



D. Trocke



L. Wherley



J. Bergmann



J. Brown



T. Demm



R. Fiebelkorn



P. Flannery



M. Franck



G. Gohlke



J. Graupmann



A. Gutknecht



L. Gutknecht



J. Hoernemann



R. Hoernemann



R. Kamps



L. Kamps



D. Karg



S. Kehrer



D. Klobe



T. Knuteson



M. Lobitz



J. Menden



J. Menden



J. Menden



B. Pearson



D. Schrupp



R. Trocke



E. Wolter



L. Wolter

CAMERA SHY

Y. Effertz  
P. Graunke  
G. Graunke

# FIFTH AND SIXTH GRADES



K. Arntzen



S. Bentz



V. Bentz



D. Braunwarth



R. Braunwarth



L. Brecht



L. Bunge



R. Good



J. Heckmann



M. Hoernemann



A. Klobe



C. Lemke



J. Mertz



R. Mohrman



M. Reimann



B. Richter



D. Sauter



R. Selmo



W. Vestal



E. Wilkens



L. Wolter



L. Wolter



E. Zellmann



J. Bergmann



B. Bohnen



D. Brecht



J. Bury



K. Clay



D. Dummer



D. Effertz



J. Feltmann



F. Fischer



J. Fruetel



B. Good



S. Harmsen



M. Hedtke



V. Hildebrandt



S. Melichar



G. Pawelk



R. Ronningen



R. Schmidt



D. Smith



J. Tuebert



E. Wolter

Camera Shy

R. Elling--4th grade

J. Karg---3rd grade

B. Elling--2nd grade

D. Schrupp--1st grade

# THIRD AND FOURTH GRADES



L. Bachmann



E. Bentz



A. Brecht



P. Chastek



J. Good



O. Hoernemann



P. Hoernemann



D. Knutson



D. Lemke



M. Mauel



A. Mielke



J. Miller



D. Mueller



J. Nemes



H. Pearson



C. Quast



G. Richardson



B. Ristow



H. Thaemert



G. Bachmann



J. Bebo



S. Bergmann



B. Bohnen



M. Braunworth



B. Fruetel



G. Good



H. Gutknecht



F. Halloran



L. Hammerstrom



L. Happ



D. Heckmann



D. Herrmann



R. Latzig



G. Lieske



M. Luedtke



C. Pawelk



M. Richardson



J. Richter



L. Sauter



L. Selmo



J. Smith



L. Stiewe



D. Stolz



A. Tuebert



M. Vestal



S. Wirtz



B. Wolter



E. Zehnder



# FIRST AND SECOND GRADES



L. Bunge

V. Chastek



R. Clay

D. Fiebelkorn

A. Frank

N. Fruetel

S. Guethling

J. Haarstad

M. Hammerstrom

J. Honebrink



P. Idsvoog

T. Jaekel

M. Klobe

P. McKim

M. Menden

A. Mielke

G. Miller

H. Reimann



C. Schimmelpfenig

K. Schwartz

C. Shenard

R. Turula

D. Wherley

M. Wirtz

B. Wolter

G. Wuetherick



G. Yaeck

C. Amrhein

A. Arntzen

D. Bentz

M. Bergmann

J. Bluemke

B. Braun

R. Braunworth



L. Brecht

B. Good

P. Good

D. Gutknecht

E. Haarstad

K. Harmsen

J. Hedtke

P. Idsvoog



L. Jaekel

K. Kehrer

C. Knutson

S. Larsen

S. Maurine

M. Nemes

M. Pawelk

G. Pieper



H. Reimann

B. Richter

E. Ristow

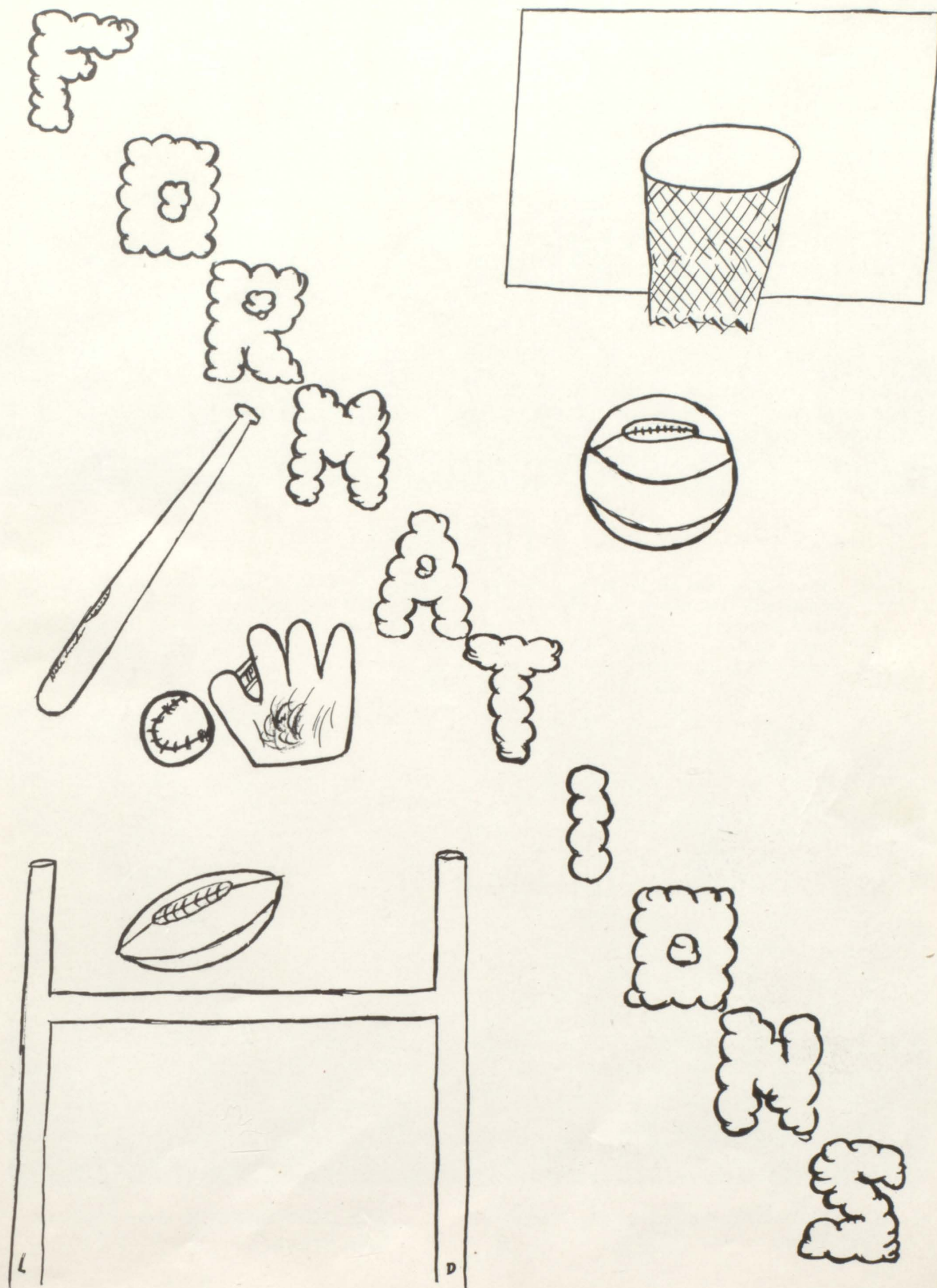
S. Rosckes

K. Trimbo

J. Wiemann

B. Wolter

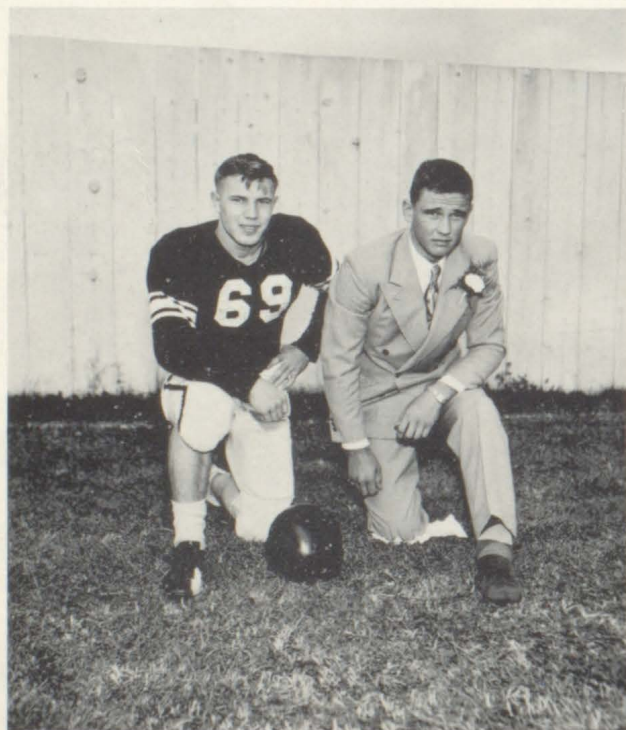
V. Zellmann





## FOOTBALL

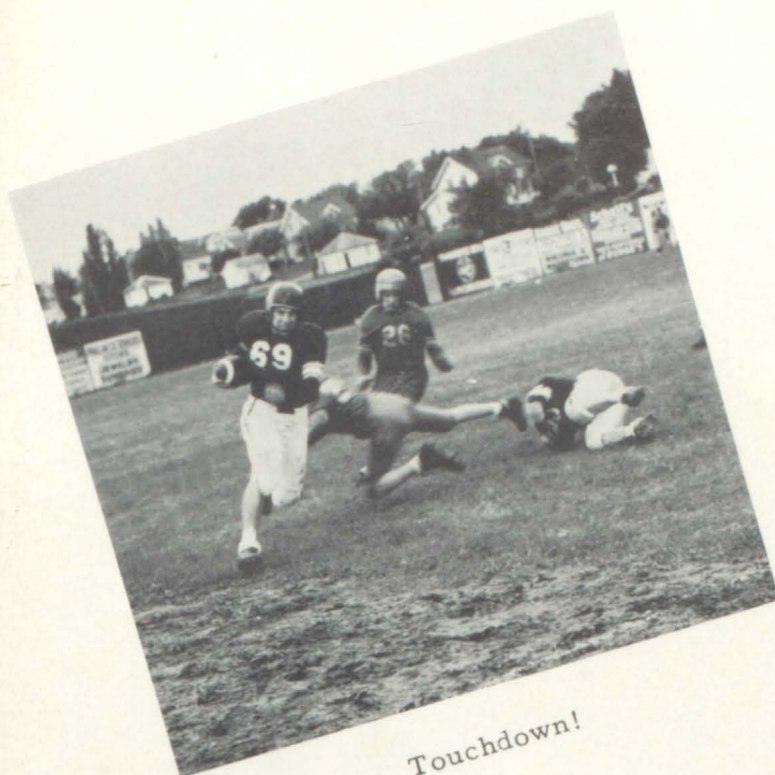
ROW 1: Orland Feltmann, Bill Bury, Maynard Rolf, Bernie Hoen, Robert Radunz, Cary Hartwig, Duane Wolff, Roland Latzig, Lyle Nellen, Bob Bailey, Ronald Smith, Charles Kranz, Dick Lindemeier. ROW 2: Ass't Coach William Lorenz, Joseph Fritz, Bill Tuebert, Ronald Mumm, Bill Schroeder, Donald Weibel, Bill Bartz, Charles Zellmann, Bob Schepers, Bob Heiland, Bruce Ranzinger, Ronald Stahlke, Roger Kamann, Coach Edgar Braun. ROW 3: Bob Groenke, Dale Zinke, Harlan Kugath, Gerald Schimelpfenig, Roger Wolter, Lowell Kohls, Bill Nemes, Kenny Kroells, Elroy Burkowske, Joe Hedtke.



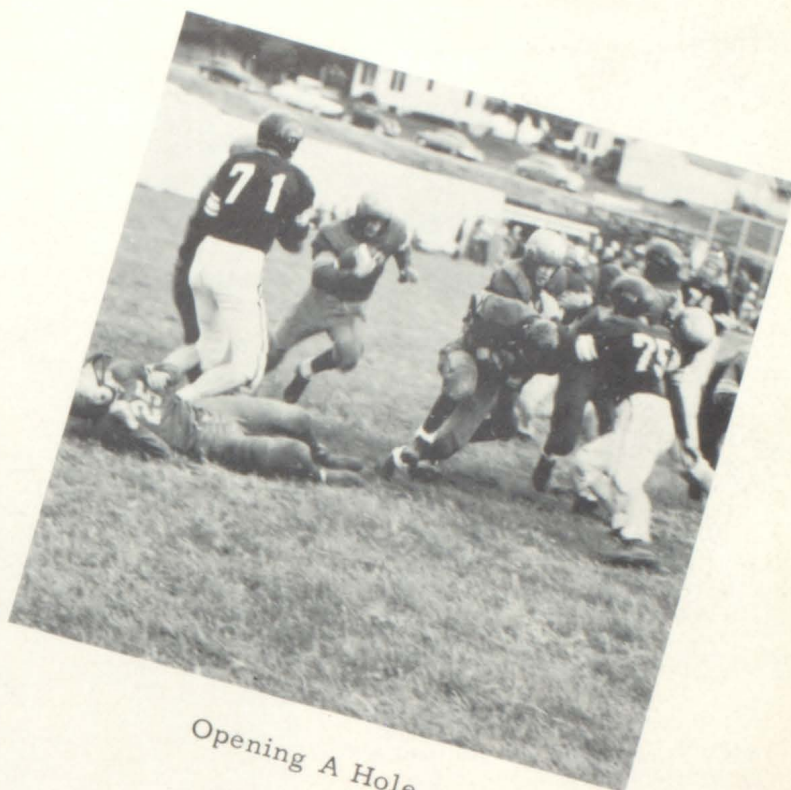
CO-CAPTAINS: Cary Hartwig, Gerald Honebrink.



ALL CONFERENCE: Cary Hartwig, Lyle Nellen.



Touchdown!



Opening A Hole

## ACTION SHOTS

### SEASON'S SCORES

Dassel	19	Central	25
Orono	17	Central	13
*Chaska	0	Central	31
Waconia	7	Central	26
Bloomington	25	Central	7
Watertown	19	Central	7
U. High	20	Central	0
Shakopee	7	Central	6
Howard Lake	19	Central	26

\*Homecoming Game



Out Of My Way!

# B A S K E T B A L L



## 'A' TEAM

ROW I: Orland Feltmann, Lothar Wolter, Gerald Honebrink, Layton Lemke, Richard Lindmeier. ROW II: Ronald Stahlke, Bill Tuebert, Ronald Smith, Dave Carlson, Roland Latzig. STUDENT MANAGERS: Bernard Hoen and Bob Mesebring.

## SEASON'S SCORES

Central	32	Arlington	33
Central	38	Hutchinson	61
Central	52	Buffalo Lake	74
Central	55	Lester Prairie	66
Central	50	Stewart	52
Central	40	Brownton	48
Central	56	Glencoe	45
Central	48	New Prague	59
Central	48	Gaylord	57
Central	56	Waconia	52
Central	59	Chaska	54
Central	46	Belle Plaine	78
Central	54	Olivia	65
Central	29	Waconia	39
Central	52	Lester Prairie	66
Central	50	Glencoe	59
Central	43	Stewart	39

### Sub-District Tournament

Central	37	Silver Lake	49	32
---------	----	-------------	----	----

Coach  
Rudolph Maurine



## SEASON'S SCORES

Central	32	Arlington	33
Central	26	Hutchinson	29
Central	31	Buffalo Lake	32
Central	28	Lester Prairie	29
Central	35	Stewart	30
Central	13	Brownton	21
Central	29	Glencoe	33
Central	29	New Prague	21
Central	34	Gaylord	23
Central	43	Waconia	24
Central	26	Chaska	39
Central	27	Belle Plaine	25
Central	35	Olivia	37
Central	32	Waconia	18
Central	21	Lester Prairie	17
Central	37	Glencoe	31
Central	22	Stewart	26



STARTING FIVE: Ronald Smith, Lothar Wolter, Gerald Honebrink, Richard Lindemeier, Orland Feltmann.

## BASKETBALL

### 'B' TEAM

ROW I: Robert Heiland, Dave Effertz, John Fiebelkorn, Robert Schepers, Donald Weibel. ROW II: Stanley Peterson, Wayne Muelich, Donald Rolf, Bruce Ranzinger, Lester Telthoester, Leon Wildung. Assistant Coach, William Lorenz.



# BASEBALL



ROW 1: Maynard Rolf, Dave Carlson, Orland Feltmann, Dale Schneider. ROW 2: Bernie Hoen, Don Weibel, Chuck Kranz, Duane Wolf, Don Jorisson, Gerry Honebrink, Roland Latzig.

# TRACK

Gerald Honebrink was the only returning letterman in track. In the district track meet he placed second in the discus, and in the regional he also came out second. At St. John's track meet he was second in the discus and fifth in the shot-put.





## CHEERLEADERS

### "A" TEAM



Marilyn Hilgers, Maxine Schneewind, Shirley Nellen, Lois Kohls.

### "B" TEAM



Darlene Buckentin, Connie Bongards, Mary Bailey, Gladys Sauter.



C. H. S. CALENDAR	
September	3-4 Freshman Registration.
September	8 First Day of School.
September	10 Lyceum: The Augspurgs.
September	24 Maxine Schneewind crowned Homecoming Queen; skits and bonfire.
September	25 Homecoming Game Dance; Initiation.
October	23 Elementary Visitation Day.
October	29-30 M. E. A.
November	10 Open House.
November	11 Lyceum: Dr. De Young.
November	13 Junior Class Play.
November	20 Lyceum: University Players.
November	26-27 Thanksgiving Vacation.
December	7 Lyceum: The Parkinsons.
December	16-17 Annual Grade School Operetta.
December	18 Christmas Vacation Begins.
December	21 Annual Christmas Concert.
December	22 Senior Sno-Ball.
January	4 School Begins After Vacation.
January	5 Lyceum: Punchinello Puppets.
January	25 Lyceum: Earth's Science Lecture.
March	2 Lyceum: Singing Marines.
March	22 Spring Primary Begins.
March	24 Lyceum: Acrobatic Skating.
April	2 District Music Contest.
April	14-18 Easter Vacation.
April	23 Senior Class Play; Rural Visitation Day.
April	24 District Music Contest.
May	8 Junior-Senior Prom.
May	26 Commencement.
May	28 Last Day of School.



# THE LOG



# RAINBOW AT MIDNIGHT





ROW 1: Ralph Oelfke, Harold Cebulla, Eugene Schrupp, Curtis Wolter, Roger Wolter, Raymond Hoernemann, Ronald Smith, Roger Kamann, Kenny Kroells, Wallace Kroells, Lothar Wolter, Eldred Loehrs. ROW 2: Chester Gohlke, Dennis Stender, Wilmer Wichelman, Hilary Schrupp, Gerald Schemelpfenig, James Brown, Harvin Smith, Kenny Bovy, Harlen Mackenthun, Fredrick Lobitz, Harlan Kugath, Ralph Herrmann, Linus Groenke, John Waetjen, Mr. Thoreson. ROW 3: Darwin Stock, Darval Hedtke, James Wickenhauser, Curtis Bruesehoff, Donald Kroells, Walter Oelfke, Paul Wickenhauser, Douglas Klobe, Lowell Hermann, Alvin Gohlke, Lester Telthoester, Burnell Schlueter, Lloyd Thran, Roger Sons, Gerald Smith.

## FUTURE FARMERS OF AMERICA

### OFFICERS

President . . . . .	Ronnie Smith
V. President . . . . .	Ray Hoernemann
Secretary . . . . .	Roger Kamann
Treasurer . . . . .	Myron Hoof
Reporter . . . . .	Ken Kroells
Sentinel . . . . .	Roger Wolter



"BLUE RIBBON CALF"  
Lowell Herrmann at Minnesota  
State Fair.



1st PRIZE "CHAPTER HERD"  
Norwood-Young America at  
Minnesota State Fair.



Queen Maxine



King Gerry

## HOMECOMING 1953



Coronation!



# HOMECOMING

1953



# STUDENT COUNCIL



ROW 1: Connie Bongard, Yvonne Mumm, Curtis Wolter, Gerald Honebrink, Donald Jorissen, Bonita Kamann, Lois Kohls. ROW 2: Gerald Feltmann, Ronald Mumm, Maynard Rolf, Donald Weibel.



Pres. Gerry Honebrink

# SCHOOL PATROL



ROW 1: Donald Smith, James Bury, Stanley Bentz, John Graupmann, Lee Gutknecht, Arlo Gutknecht, Tyrone Demm, Lyle Brecht. ROW 2: Virgil Bentz, Dale Karg, Robert Selmo, Kerry Clay, Linda Bunge, Karen Arntzen, Ethel Zellmann, Wendy Vestal, Judy Mertz, Todd Knutson, Jack Bergmann, Robert Good. ROW 3: Mr. Ranzinger, advisor. Thomas Bury, David Effertz, James Bergmann.



## JAKE'S OLD TIMERS

Saxophone . . . . Gladys Sauter  
 Trumpet . . . . . Joe Hansel  
 Clarinet . . . . . Eleanor Thomas  
 Accordion . . . . . Cary Hartwig

Piano . . . . . Maxine Schneewind  
 Trombone . . . . . Alvin Flom  
 Bass . . . . . Lefty Latzig  
 Drum . . . . . Connie Bongard

The Old Time Band is directed by Joe Hansel. It practices on Monday nights about two or three hours. It participated in the Spring Concert and the Variety Program. On January 28th the Band played at the Style Show presented by the Cologne Milling Co. They also played at a pep-fest and a basketball game. Among the pieces the band plays are the St. Paul Waltz, Baruska, and the Helana Polka.



Leader: Joe Hansel



## CENTRAL HIGH SCHOOL BAND

CLARINET: Annette Stender, Ronald Stahle, Martha Panning, Darlene Dietel, Eleana Herrmann, Angela Schoewe, Arlys Kramer, Marlene Kloempken, Beverley Oelfke, Carolyn Harjes, Lois Englemann, Darlene Wendlandt, LaMoyne Menth, Eleanor Thomas, Shirley Pederson, Muriel Wuetherick. FLUTE: Judith Noening. PICCOLO: Lois Klemp. SAXOPHONE: Joel Ann Wirtz, Jean Menden, Vernetta Wischnack, Noreen Freter, Delphine Wolter, Dianna Trocke, Gladys Sauter, Marla McKim, Shirley Herrmann, Carol Klemp. HORN: Robert Groenke. TROMBONE: Evelyn Hohl, Myra Brelje, Lois Hinn, Pat Hron, JoAnn Mueller, EVonne Haag, Valeria Pawelk. TRUMPETS: Mavis Norenberg, Almeda Guethling, Marceline Oestrich, Joe Hansel. BASS: Roland Latzig, Cary Hartwig, Kenneth Kroells. DRUMS: Evonne Stender, Rosemarie Lins, Connie Bongard, Elaine Lemke.



## BAND OFFICERS

Pres.	Darlene Wendlandt
V. Pres.	Roland Latzig
Sec.	Carol Klemp
Treas.	Ronald Stahlke
Manager	Joe Hansel

The senior band, under the direction of Mr. Alvin Flom, has gone to many exciting places during the year. Last summer they participated in the parade and band contests at Edina, Arlington and Chaska, where they won second place. The band was awarded a plaque for marching in the Aquatenial Parade on July 22, 1953. They also participated in the Norwood Annual Celebration. At Homecoming the parade was led by the band through both Norwood and Young America. The selected marches are Stars and Stripes Forever, Anchors Away, Gardes Du Corps, Semper Fidelis, Destiny Overture, and Thendara Overture.

## JUNIOR BAND

ROW 1: B. Good, J. Good, W. Vestal, R. Kamps, P. Hoernemann, E. Wilkens. ROW 2: A. Stender, D. Franck, E. Heinisch, B. Richter, K. Arntzen. ROW 3: J. Mertz, C. Heinisch, S. Clay, P. Wischnack, L. Klemp. ROW 4: S. Malichar, K. Clay, R. Braunwarth, J. Bury, D. Braunwarth. ROW 5: M. Reiman, B. Fischer, B. Schmidt, V. Bentz, D. Smith, D. Karg, D. Bartz, A. Fruetel, J. Menden, J. Menden. ROW 6: S. Stender, K. Happ, G. Siewert, B. Bentz, T. Bury. ROW 7: S. Kehrer, J. Hoernemann, C. Tellers, S. Herrmenn, B. Ranzinger. ROW 8: D. Sauter, D. Wolter, R. Morman, J. Sellnow, V. Pawelk. ROW 9: W. Leikam, E. Winkler, D. Hoernemann. ROW 10: D. Schrupp, L. Brecht, L. Miller, C. Wolter, D. Wolter, A. Heimkes, J. Graupmann, H. Haag, R. Siewert, Mr. Flom-Director, Y. Effertz, C. Quast, D. Effertz, J. Bergmann, J. Feltmann, J. Good.



# STUDENT LIBRARIANS



ROW 1: Marilyn Hilgers, Marlene Will, Shirley Nellen, Phyllis Eiden, Shirley Schneider, Romona Kroells, Almeda Guethling, Joanne Peterson. ROW 2: Robert Bailey, Carmen Leiske, Jeannette Schmitz, Carol Hoen, Emma Flannery, Bertha Schrupp, Mr. Wold, Advisor.

# PROJECTIONISTS CLUB



ROW 1: Eleanor Thomas, Shirley Pedersen, Gladys Ische, Darlene Wendlandt, Mary Lou Teubert, Evelyn Hohl. ROW 2: Mr. Flom, Advisor, Roger Kamann, Ray Hoernemann, Harlan Kugath, Ralph Herrmann, Gerald Schimelpfenig, Kenneth Kroells, Cary Hartwig, Mr. Andersen, Advisor.



Gerry Honebrink  
President



Billy Bury  
V. Pres.



Maynard Rolf  
Treasurer



Bernie Hoen  
Secretary

## "C" CLUB

ROW 1: Dale Schneider, Gerry Honebrink, Joe Hansel, Dick Lindemeier, Bob Mesenbring, Maynard Rolf. ROW 2: Mr. Braun, Cary Hartwig, Bernie Hoen, Ronnie Stahlke, Don Jorrison, John Fiebelkorn, Chuck Kranz, Lyle Nellen, Bob Effertz, Billy Teubert, Roland Latzig. ROW 3: Billy Schroeder, Ronnie Mumm, Donny Wiebel, Bob Schepers, Bob Radunz, Bill Bury, Dave Carlson.



Mr. Koenig  
Director



Joel Wirtz  
"Frankie"



Bill Teubert  
"Mr. Nelson"



Evonne Stender  
"Nina"



Ray Hoernemann  
"Mr. Quigley"



Eileen Ische  
"Madeline"



Joanne Wilems  
"Daffney"



Ornelle Perbix  
"Celest"



JoAnn Mueller  
"Mrs. Nelson"



Ronnie Mumm  
"Hercules"



Bill Schroeder  
"Henry"



Curtis Brueshoff  
"Wilbur"

## "FINDERS CREEPERS"

PRESENTED by the JUNIOR CLASS  
Friday, November 13, 1953

Myrtle Thaemert-"Grannie"



Harlan Kugath  
"Dr. Brown"



Bob Bailey  
"Clyde"



Eldred Loehrs-"Mr. Schuester"





## DECLAMATION

Mr. Koenig, Advisor; Irene Haasken, Barbara Graupmann, Miss Ronningen, Shirley Schense, Carol Klemp, Evelyn Hohl, Mr. Flom.

## SENIOR CLASS PLAY

This year, the senior class presented, "Rest Assured", a three act comedy by Donald Payton. The story concerns a rich, grouchy old man who refuses to let his daughter marry a poor Italian. Complications set in when the "rounder-upper of lost souls" from "down below" drops in to take the old grouch to the lower regions. He is awakened by the maid and finds that he merely had a bad dream. After this he is very reformed and the wedding plans are completed.

ROW 1: Bernie Hoen, Yvonne Mumm, Lynne Engen, Eleanor Thomas, Joe Hansel. ROW 2: Maynard Rolf, Lyman Haag, David Carlson, Alvin Gohlke, Mr. Koenig, Advisor; Dale Schneider, Dick Lindemeier, Student Director; Gerry Honebrink, LaVonne Halloren, Marilyn Hilgers, Layton Lemke, Jeanne Menden, Almeda Guethling, Maxine Schneewind.



# Smoke Signals

Volume 1, Issue 2

NORWOOD-YOUNG AMERICA, MINN

Nov. 25, 1953

## Jr. Play Success

If you've heard such expressions such as "shoot a mile, yes" or "I'm going home", floating around school it's because of a certain play which was presented by the junior class on Friday, November 13.

The name of the play was "Finders Creepers, a three act comedy-mystery.

Trouble began for the Nelson's when Hercules Nelson's uncle and aunt asked him to spend a few days at their home. They even asked him to bring his friend, Wilbur Maxwell along.

The two boys were quick to take up the invitation, little realizing that they were going to get involved in murder, funeral arrangements for a "walking corpse," a wind up in some romantic tanglements.

Here and his buddy, armed with magnifying glasses and all the wit at their disposal set out to learn why the corpse walked and who didn't want him to.

All who attended the found the solution to questions and many of the

When walking down the halls of Central one cannot help but notice the many new colorful fall outfits worn by the girls. This is the season of jerseys, corduroy and woolens.

Delphine Wolter and Arlys Kramer both have very cute jersey blouses. They go very nicely with almost any kind of skirt.

Sweaters don't seem to be complete without a peter-pan or angora collar. Bonnie Kamann has a stunning black sweater with a bat wing sleeve.

## FACULTY FACTS

Put atoms, molecules, gravity and H-O together and you will have a Mr. Charles And

## STAFF

## SCHOOL HOLDS OPEN HOUSE

This week is National Education Week. Monday night, November 9, Central had it's annual Open House, which consisted mostly of dedicating the new grade school which was finished this summer.

The program started with two numbers by the band and the Star-Spangled Banner. After which, a prayer was said by Rev. Menger.

Mr. Peterson then introduced the platform guests, which consisted of the school board and Dr. Holst, who was our superintendent last year, and who told us how glad he was to be able to come back for a visit.

H. W. Swanson, the architect of the new building told us about it, and how much he enjoyed working on it. Then he presented the building to the citizens of the district. Mr. Buegel gave the response.

Mr. W. E. Coumbe, Superintendent of Schools in Chaska gave a very fine speech on the fourth W of Education, Responsibility.

Then the Glee Club sang two songs. Rev. Menger gave a prayer and all the students went to the new building to see it and have materials.



ROW 1: Lynne Engen, Jeanette Schmitz, Mr. Simonson-Advisor, Lavonne Halloran-Editor, Eleanor Thomas-Circulation Manager, Shirley Pedersen, Pat Bergmann. ROW 2: Yvonne Mumm, Carol Hoen, LaVern Lange, Evonne Stender, Darlene Wendlandt, Arlys Kramer, Delphine Wolter, Gladys Ische, Marlene Will, Maxine Schnewind, Carol Klemp, Shirley Nellen, Ornelle Perbix, Eileen Ische, Marilyn Hilgers, Janelle Perbix, Phyllis Eiden. ROW 3: Dale Schneider, Gerry Honebrink, Dick Lindemeier. NOT PICTURED: Bernie Hoen-Sports Editor, Patty Kehrer.



## EDITORS

ROW 1: Dale Schneider-Art Editor; Yvonne Mumm-Business Editor; Patty Kehrer-Editor-in-Chief; Lavonne Halloran-Copy Editor; Eleanor Thomas-Ac-tivities Editor; Bernie Hoen-Sports Editor; JoAnn Peterson-Picture Editor. ROW 2: Darlene Wend-landt-Class Editor.

## CENTRALIAN



## STAFF

ROW 1: Dale Schneider, Yvonne Mumm, Patty Kehrer, Lavonne Halloran, Darlene Wendlandt, Eleanor Thomas, Bernie Hoen. ROW 2: Shirley Pederson, Lynn Engen, Arlys Kramer, Gladys Ische, Shirley Schneider, Shirley Nel-len, Miss Kipp, Advisor, David Carlson, Roland Lins, JoAnn Peterson. ROW 3: Almeda Guethling, Darlene Dietel, Don Jorisson, Layton Lemke, Leonard Schuette, Joe Hansel, Phyllis Eiden, Lois Engelmann, Martha Panning, Carol Klemp. NOT PICTURED: Phyllis Schuette, Shirley Schense, Jeanne Menden.



## GLEE CLUB

ROW 1: JoAnn Peterson, Lynne Engen, Shirley Pederson, Janet Sellnow, Patricia Bergmann, Carol Klemp, Darleen Wendlandt, Eleanor Thomas, Lavonne Halloran, Ramona Kroells, Catherine Tellers, Dorothy Hoen, Verna Holste, Maxine Schneewind, Pianist. ROW 2: Arlene Braun, Joel Wirtz, LaVern Lange, Arlys Kramer, Marlene Kloempken, Carolyn Harjes, Shirley Schense, Marilyn Schmidt, Darlene Dietel, Marlene Will, Patty Kehrer, Shirley Schnieder, Shirley Nellen, Donna Flusemann, Mary Lou Tuebert, Linda Whereley, Martha Panning, Mr. Flom, Director. ROW 3: Jeanette Schmitz, Darlene Panning, Karen Wilkens, Carol Hoen, Norma Holste, Evelyn Hohl, Gladys Ische, Helene Mueller, Dorothy Lueck, Clarice Wolter, JoAnn Mueller, Yvonne Mumm, Marilyn Hilgers, Phyllis Eiden, Ornelle Perbix, Janelle Perbix.



TRIO

Evonne Stender, Carolyn Harjes, LaVern Lange,  
Joel Wirtz, Pianist.



## MIXED CHORUS

ROW 1: Carol Klemp, Janet Sellnow, Patricia Bergmann, Darlene Wendlandt, Eleanor Thomas, Shirley Peterson, Lynne Engen, JoAnne Peterson, Lavonne Halloran, Janelle Perbix, Ornelle Perbix, Yvonne Mumm, Lois Kohls, Carol Pieper, Maxine Schneewind, Pianist. ROW 2: Irene Haasken, Norma Holste, Joel Wirtz, LaVern Lange, Arlys Kramer, Marlene Kloempken, Carolyn Harjes, Shirley Schense, Marilyn Schmidt, Patty Kehrer, Shirley Schneider, Shirley Nellen, Gladys Ische, Helene Mueller, Evelyn Hohl, JoAnn Mueller, Mr. Flom, Director. ROW 3: Lowell Herrmann, Harvin Smith, Alvin Gohlke, Wallace Kroells, Harlan Machenthun, Joe Hansel, Dick Lindemeier, Lyman Haag, Tom Sons, Dale Schneider, Leonard Schuette, Donald Jorissen, Layton Lemke, Kenneth Bovy, Bernard Hoen, Cary Hartwig, Bob Mesenbring.

## COOKS



Mrs. Hugo Zellmann, Mrs. William Fruetel, Mrs. George Harms.

## LUNCH LINE



## GROUND CREW

### CUSTODIANS



Louis Mack, Adolph Henning.

### BUS DRIVERS

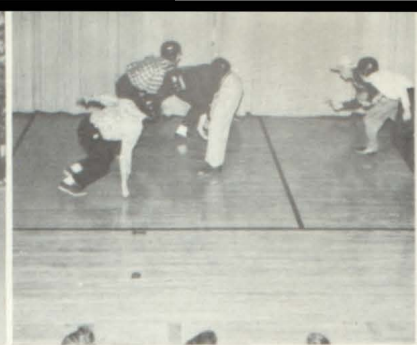


Elmer Sauter, Edwin Droegge, Harvey Bachmann, Robert Pieper, Clarence Rolf, Vernon Adolphson, Orville Lothka.

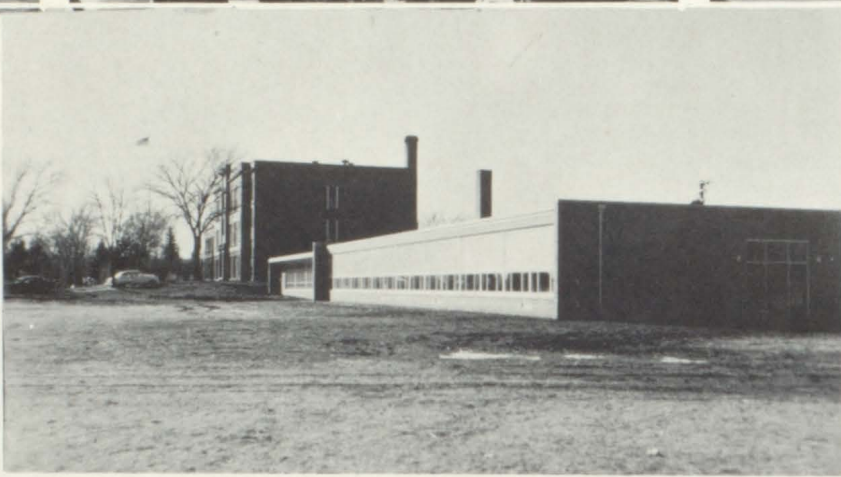


## SCENES AROUND SCHOOL





# SNAPSHOTS







## PATRONS

Cologne Milling Co.

Dew Drop Inn

Guy's Studio

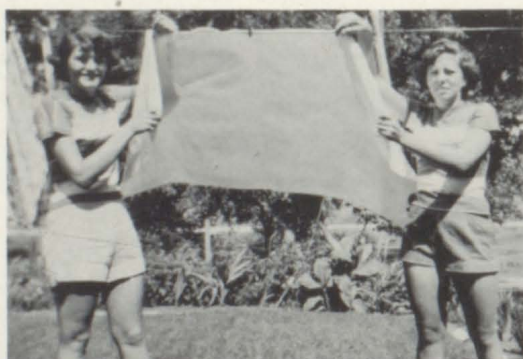
Norwood Home Bakery

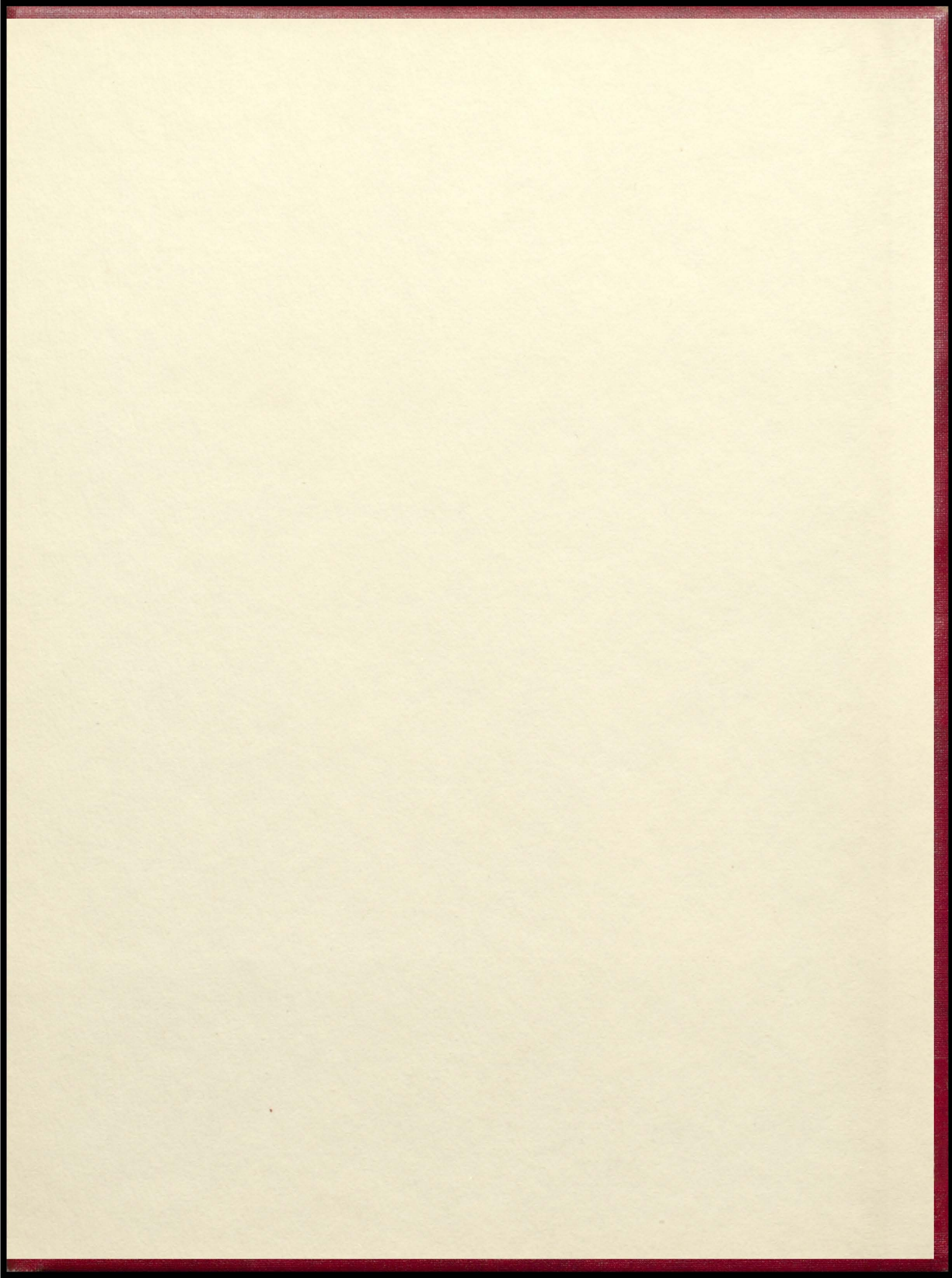
Oak Grove Dairy

O. P. Idsvoog, Veterinarian

Stahlke's Fairway Store

W. W. Good & Sons





*Myers*  
CUSTOM  
COVERS