



 **SHP**

Community Presentation:  
**Facilities Master Planning Update**  
January 26, 2023

# Introduction

- Dr. David Hire - Superintendent of Schools
- Josh Predovich - Architect, SHP

## **Mission Statement**

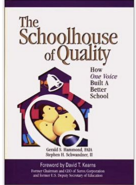
*Coshocton City Schools, in partnership with families and community, will empower individuals to become literate, respectful, responsible, and independent lifelong learners in an ever-changing global society.*



# OUR EXPERTISE



One of the first architects nationally to integrate community values into the design of school facilities.



ENR Midwest Top Design Firms ranked #6 in Education (2020).



Founding partner of the *9 Billion Schools Institute* devoted to advocating for life-long learning.



Student-centric design.

# A Community-Created Plan



**Educationally  
Fantastic**



**Financially  
Responsible**



**Community  
Developed &  
Supported**

# Community Survey #1

## Coshocton CSD - Facilities Master Plan Survey #1

Welcome!

To gather the thoughts and opinions of the entire Coshocton community, the district administration team is conducting this brief survey as a part of a larger community engagement effort. The results from this initiative will be factored into the Board of Education's decision to pursue a specific facilities master plan for the district.

**Opened: 11/28**

**Closed: 12/12**

**Presented: 12/15 at Regular BOE Meeting**

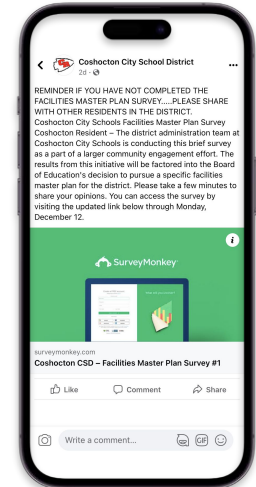
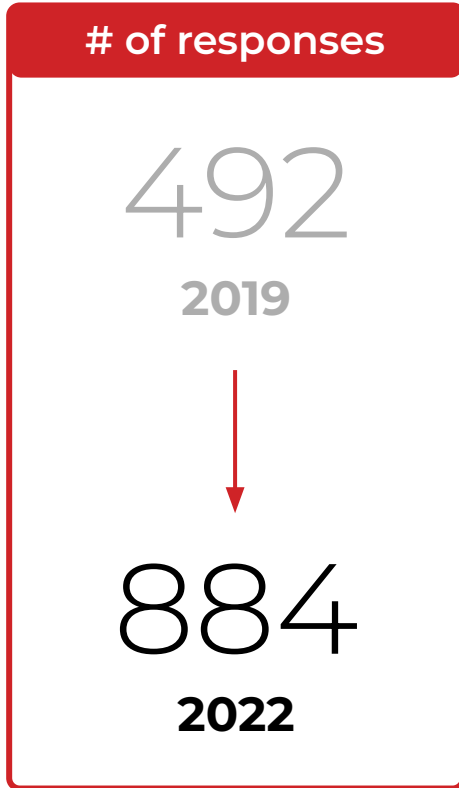


# Community Survey #1 – Goal

- Compare the results of January 2019 survey results.
- Determine if the results warrant re-starting the master planning process to take advantage of an Ohio Facility Construction Commission (OFCC) offer of funding in 2023.



# Survey Promotion & Responses



# Weighted Averages

The results of Questions 5-9 are represented by a weighted average score. These scores were calculated directly from the responses on the likert scale matrices and corresponds to the following 5-point scale:

Strongly Disagree = 1

Disagree = 2

Neutral = 3

Agree = 4

Strongly Agree = 5

For each question, the prompts are ranked in order of highest to lowest score. The “Change” column indicates the difference between the weighted average scores of this survey and that of the survey conducted in January 2019.

As a reminder, respondents were given the option to skip questions if they felt uninformed about a particular facility or topic.

# Question 5 Results

## Coshocton High School (7-12)

Answered: 773 Skipped: 111

Response	Weighted Average	Change
<b>D)</b> The facility is a positive reflection of our community.	3.48	<i>Not included in the Jan. 2019 survey</i>
<b>A)</b> The facility fulfills the needs of our educational and learning goals.	3.45	+ 0.07
<b>B)</b> The facility is a safe, healthy environment for our students.	3.30	+ 0.18
<b>C)</b> The facility operates effectively and efficiently.	3.30	+ 0.12

# Question 6 Results

## Facility Master Plan Options

Answered: 775 Skipped: 109

Response	Weighted Average
<b>B)</b> We should build a new 7-12 school with state funding support.	<b>3.31</b>
<b>C)</b> We should renovate our existing 7-12 school without state funding support.	2.82
<b>A)</b> We should build an addition on to the existing PK-6 school (that would house 7-12 students) with state funding support.	2.13

*These responses were not included in the January 2019 survey.*

# Question 7 Results

## High School Swimming Pool

Answered: 771 Skipped: 113

Response	Weighted Average	Change
<b>A)</b> It is important that our high school has a swimming pool.	4.13	+ 0.20
<b>C)</b> It is important that we keep our current high school swimming pool.	3.93	+ 0.17
<b>B)</b> It is important that our high school has a swimming pool continues to be operated with school district tax dollars.	3.79	+ 0.21

# Question 8 Results

## High School Gymnasium

Answered: 768   Skipped: 116

Response	Weighted Average	Change
<b>A)</b> It is important that our high school has a large gymnasium that accommodates multiple community groups and school-day activities.	4.46	+ 0.06
<b>B)</b> It is important that our high school has a large gymnasium that allows us to host OHSAA and other local/regional events.	4.41	+ 0.06
<b>C)</b> It is important that we keep our current high school gymnasium in any future plans.	4.17	+ 0.03

# Question 9 Results

## High School Auditorium

Answered: 767   Skipped: 117

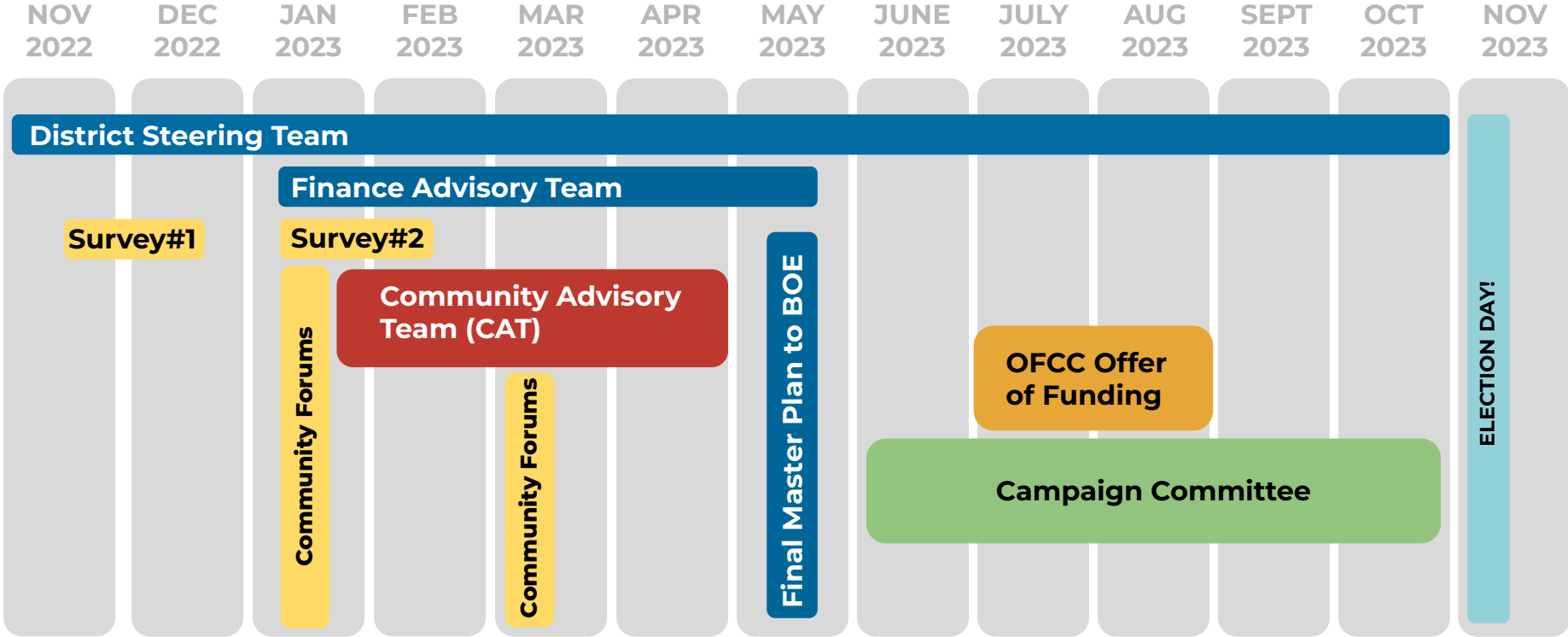
Response	Weighted Average	Change
<b>A)</b> It is important that our high school has a large auditorium to accommodate school and community groups.	4.40	0.00
<b>B)</b> It is important that we keep our current high school auditorium in any future plans.	4.15	+ 0.08

## Key Takeaways – Survey #1

- There is stronger community interest in this facilities master planning process than in 2019 (80% increase in survey participation).
- Since the previous survey in 2019, the community's perception of the high school facility and the extracurricular facilities (pool, gymnasium, auditorium) have remained fairly similar.
- Among the master plan options included in the survey, building a new 7-12 school with state funding support had the highest weighted average (3.31).

**Next Steps:** Deliver a community presentation in January 2023 to review the master planning process and share the results of this survey. Use the event as a platform to launch the second community survey that will go into greater detail about each master plan option.

# Master Planning Timeline



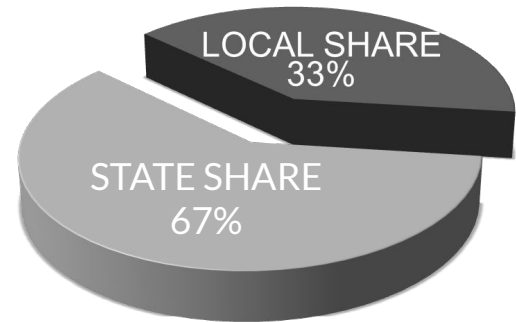
\*Planning Calendar takes advantage of 2022 CAT planning work.

# Master Planning Process Overview – Who is Paying for This?

- The Ohio Facilities Construction Commission (OFCC) shares the cost of constructing school buildings (Co-funded Budget).
- The district will need to consider Locally Funded Initiatives that would be 100% paid for by the district (LFI Budget).

## Factors for Calculating State Funding:

- District Total Property Value
- Number of Enrolled Students



# Enrollment Projection from FutureThink (OFCC)

## Coshocton City School District Projected Enrollment

Planning Year

Grade	2021-22 Actual	2022-23	2023-24	2024-25	2025-26	2026-27	2027-28	2028-29	2029-30	2030-31	2031-32
Pre-K (ECE)	10	10	10	10	10	10	10	10	10	10	10
Pre-K (special needs)	5	12	11	10	11	11	11	11	11	11	11
K	132	135	126	114	119	123	123	123	123	123	123
1	118	132	134	125	113	118	122	122	122	122	122
2	122	118	131	134	125	113	118	121	121	121	121
3	129	119	114	127	129	121	109	114	117	117	117
4	115	131	120	116	128	131	122	111	116	119	119
5	121	115	131	120	115	128	130	122	110	115	118
6	116	122	116	132	120	116	129	131	123	111	116
7	118	118	124	117	133	122	117	130	133	124	112
8	106	114	113	119	113	128	117	113	125	128	119
9	135	103	110	110	115	109	124	113	109	121	124
10	106	130	99	106	105	110	104	119	109	105	116
11	61	74	90	69	73	73	77	73	82	75	73
12	67	55	66	81	62	66	66	69	65	74	68
Pre-K - 12 Total	1,461	1,488	1,495	1,490	1,471	1,479	1,479	1,482	1,476	1,476	1,469
Career Tech Comprehensive - Low Bay	11	13	16	15	14	14	15	14	15	15	14
Career Tech Off-Site	41	32	38	37	33	34	35	35	36	36	34
Grand Total	1,513	1,533	1,549	1,542	1,518	1,527	1,529	1,531	1,527	1,527	1,517

Source: FutureThink

# District History with OFCC

- Segment 1 Local/State shares locked at 33% Local / 67% State
  - History of District Eligibility Ranking
    - 2009 - 201 33% Local, 67% State - Shares Lock In
    - 2012 - 149 25% Local, 75% State
    - 2015 - 114 19% Local, 81% State
    - 2018 - 96 16% Local, 84% State
    - 2021 - 68 12% Local, 88% State
- To date, no district has been successful in breaking a segmented agreement (requires change to state legislation)
  - District has requested a list of other districts that have enrolled in Segmented Agreements.



# Master Planning – OPTION REVIEW

## Option 1: Total Co-Funded Cost \$32.7M

PK-6 + 7-12 Addition (Base Master Plan from OFCC)

- State Share: \$21,926,446 (Capped in Option 1)
- Build a new 78,000sf Addition to Coshocton PK-6 to house grades PK-12. No renovation work at the existing PK-6.
- Rework existing campus site including drives, parking, utilities.
- Existing CHS - Abate / demolition classroom wings, cap and renovation Gym, Pool, Auditorium, \*Relocate Planetarium.
- Local Share: \$10,799,593
- Recommended LFIs: \$11,746,250

\$22,545,843 Total Local Share



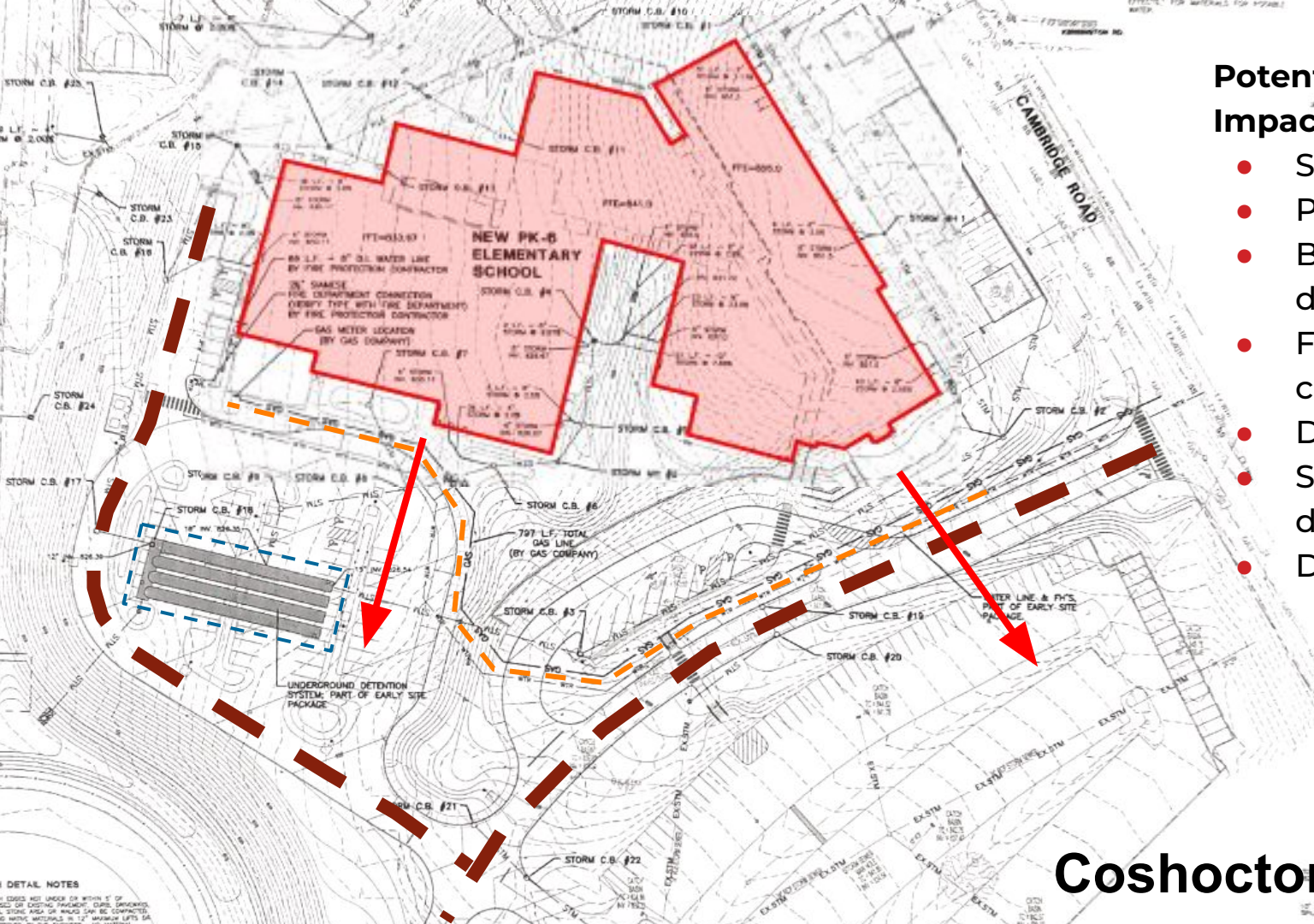
Coshocton  
Elementary School

**A**

**B**

Coshocton High School

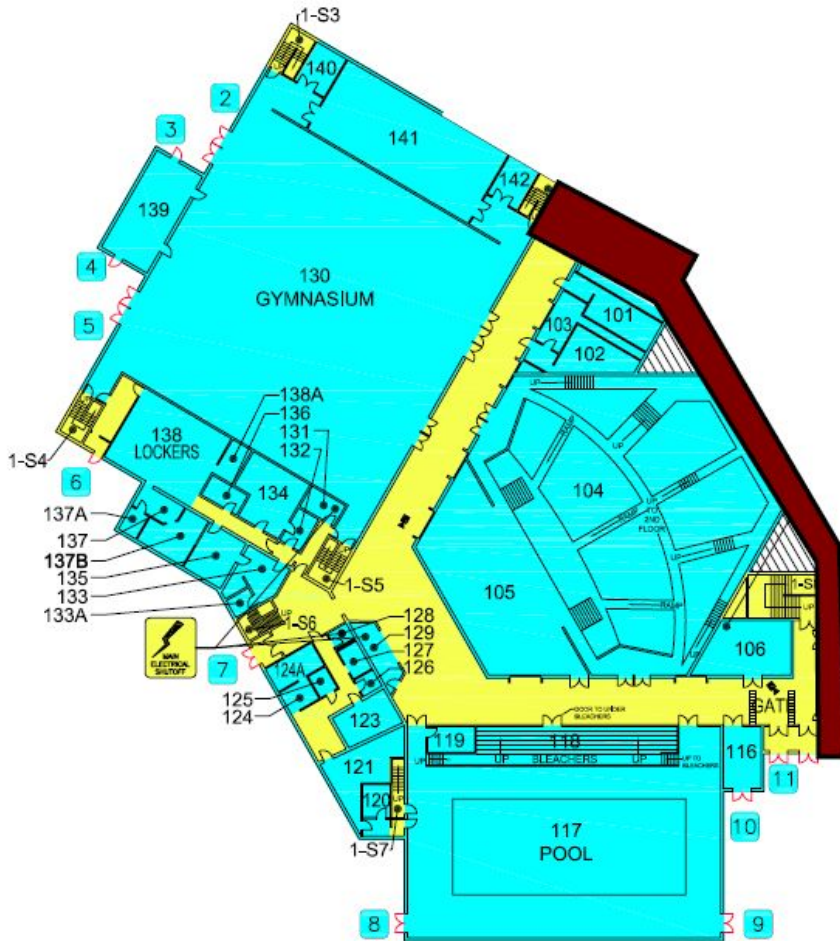
**Option #1/1A**



## Potential Addition Impacts:

- Soils/Grading
- Parking
- Back of house deliveries
- Fire department connection
- Dumpster access
- Storm water detention
- Driveway

# Coshocton PK-6 Site



- Abate / Demolish existing classroom wings
- Cap exterior with new facade
- Add stairs/elevator
- Limited renovations as required.

## Coshocton HS 1st Floor

# Master Planning – OPTION REVIEW

## Option 1A: Total Co-Funded Cost \$32.7M

PK-6 + 7-12 Addition (Base Master Plan from OFCC)

- State Share: \$21,926,446 (Capped in Option 1)
  - Build a new 78,000sf Addition to Coshocton ES to house grades PK-12. No renovation work at the existing PK-6.
  - Rework existing campus site including drives, parking, utilities.
  - **Existing CHS - Limited Renovations, no demolition.**
  - Local Share: \$10,373,085
  - Recommended LFIs: \$ 9,796,250
- \$20,169,335 Total Local Share

# Master Planning – OPTION REVIEW

## Option 2: Total Co-Funded Cost \$42.3M

Move a portion of 7th grade into PK-6, Build New 7-12 M/HS

- State Share: \$21,926,446 (Capped in Option 1)
  - Locate the new 100,456sf 7-12 between the District Office/CHS parking lot. Includes 157 co-funded parking spaces.
  - Existing CHS - Abate / demolition classroom wings, cap and renovation Gym, Pool, Auditorium, \*Relocate Planetarium.
  - No work at the PK6.
  - Local Share: \$19,360,902
  - Recommended LFIs: \$10,233,090
- \$29,593,992 Total Local Share



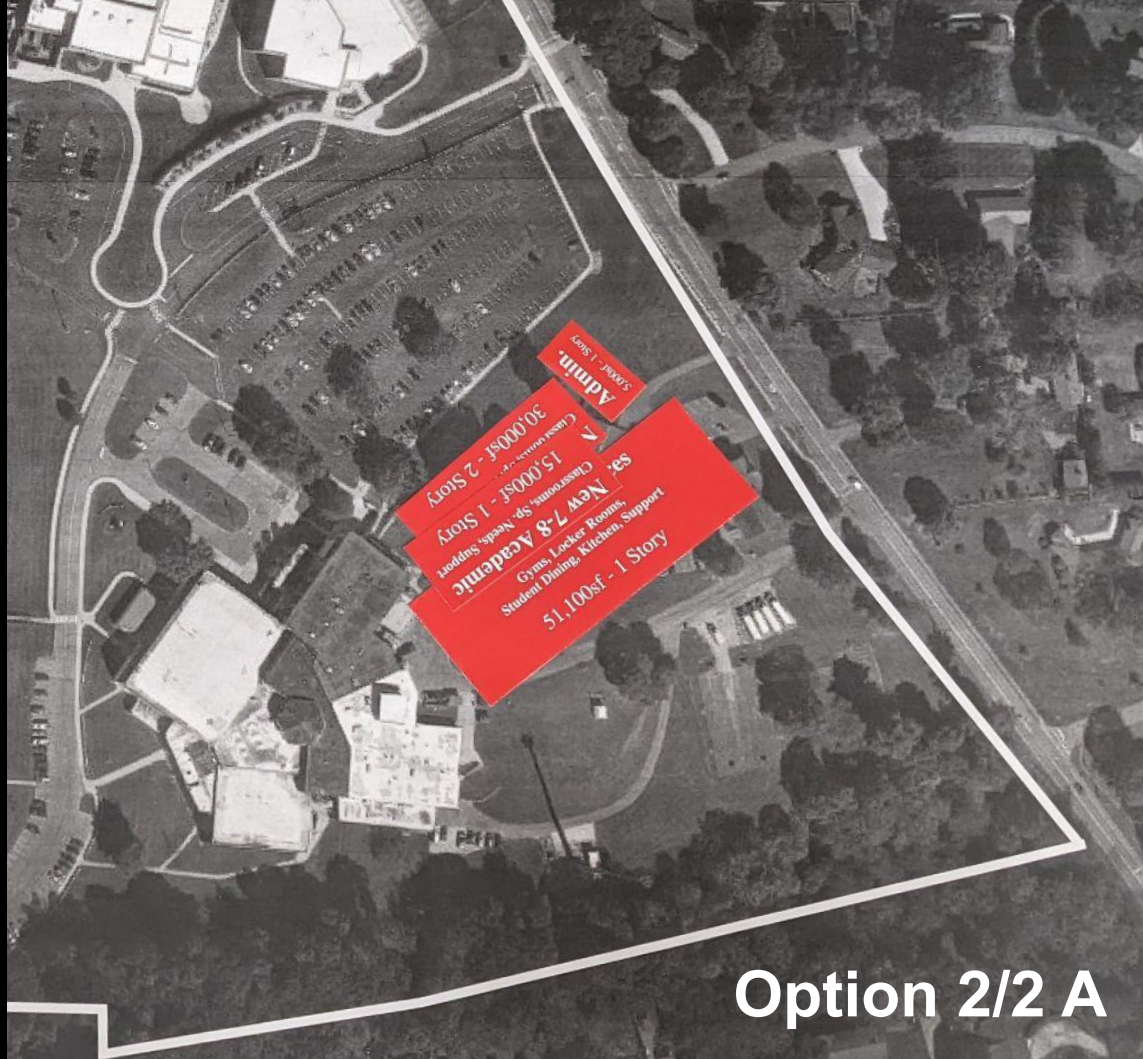
A

B

C

# Coshocton Campus

Google



30,000sf - 2 Story  
Classrooms, Sp  
Classroom

15,000sf - 1 Story  
Classrooms, Sp  
Needs Support

Admin  
1 Story - 1 Story

Story 1 - 1 - 15001.15  
Student Dining, Kitchen  
Gym, Locker Room, Support  
Reading

Option 2/2 A

# Master Planning – OPTION REVIEW

## Option 2A: Total Co-Funded Cost \$40M

Move a portion of 7th grade into PK-6, Build New 7-12 M/HS

- State Share: \$21,926,446 (Capped in Option 1)
  - Locate the new 100,456sf 7-12 between the District Office/CHS parking lot. Includes 157 co-funded parking spaces.
  - **Existing CHS - Limited Renovations, no demolition.**
  - No work at the PK6.
  - Local Share: \$18,934,394
  - Recommended LFIs: \$ 3,611,450
- \$22,545,843 Total Local Share

# Master Planning – OPTION REVIEW

## Option 3: Total Co-Funded Cost \$48.7M

Renovation \*175,994sf CHS, No work at the PK-6 (With OFCC)

- State Share: \$21,926,446 (Capped in Option 1)
  - Full Renovation of Coshocton High School to a like new condition.
  - No work at the PK6.
  - Recommended LFI's reduced to only dollars to allow the district to improve systems or materials above OFCC base minimums.
  - Local Share: \$26,799,536
  - Recommended LFIs: \$ 1,306,250
- \$28,105,786 Total Local Share

*\*Questions from CP#1 - Define "like new" condition.*

# Master Planning – OPTION REVIEW

## Option 4: Total Co-Funded Cost \$33.4M

Renovation \*175,994sf CHS, No work at the PK-6 (Without OFCC)

- State Share: \$ 0
  - Full Renovation of Coshocton High School to a like new condition.
  - No work at the PK6.
  - Recommended LFI's reduced to only dollars to allow the district to improve systems or materials above OFCC base minimums.
  - Local Share: \$33,400,000
  - Recommended LFIs: \$ 56,250
- \$ 33,456,250 Total Local Share

*\*Questions from CP#1 - Does district need to meet OFCC "like new" condition?*

# Master Planning – COMPARISON

## Option 1:

PK-6 + 7-12 Addition (Base Master Plan from OFCC)

Total Local Share:

\$22,545,843

## Option 2:

Move 7 grade into PK-6, Build New 7-12 M/HS

\$29,593,992

## Option 3:

Renovation CHS, No work at the PK-6 (With OFCC)

\$28,105,786

## Option 4:

Renovation CHS, No work at the PK-6 (No OFCC)

\$33,456,250

# Master Planning – COMPARISON

## Option 1A:

PK-6 + 7-12 Addition (Base Master Plan from OFCC)

Limited Renovation of CHS

Total Local Share:

\$20,169,335

## Option 2A:

Move 7 grade into PK-6, Build New 7-12 M/HS

Limited Renovation of CHS

\$22,545,843

# Take Survey #2

[www.surveymonkey.com](http://www.surveymonkey.com/r/coshocton-schools-2)  
[/r/coshocton-schools-2](http://www.surveymonkey.com/r/coshocton-schools-2)



**SCAN HERE!**

Questions?



