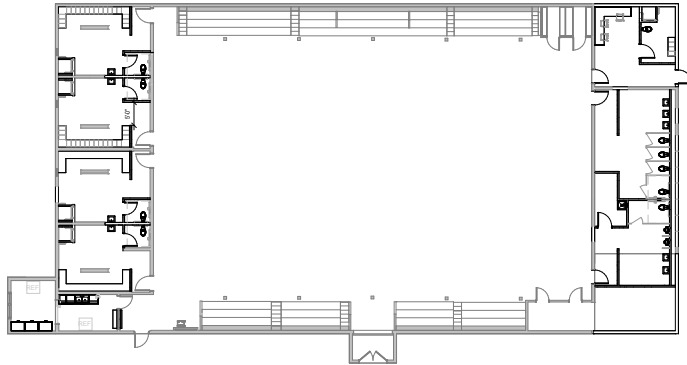
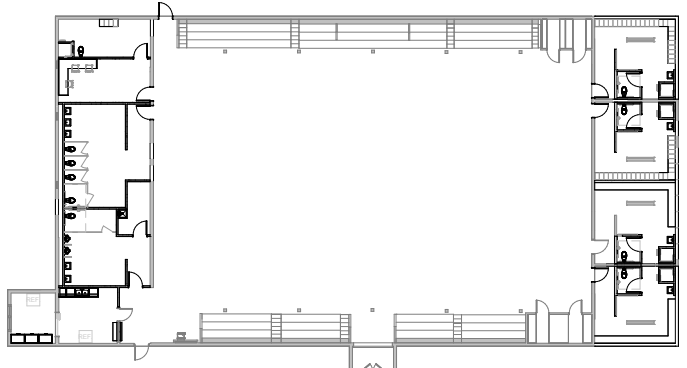


① OPTION 1
 332' x 142'



② OPTION 2
 332' x 142'



③ OPTION 3
 332' x 142'

NOTES - ARCHITECTURAL PLAN	
GENERAL ARCHITECTURAL PLAN NOTES	
*	NOT ALL NOTES APPEAR ON EACH SHEET
*	ALL VERTICAL WALL EXPANSION JOINTS TO BE TWO INCHES UNLESS NOTED OTHERWISE
*	ALL DIMENSIONS TO BE FROM FACE OF STUD UNLESS NOTED OTHERWISE
#	PLAN NOTES

SIGNATURE _____

PROPRIETARY AND CONFIDENTIAL
 This drawing and its contents are the property of Performance Services and shall not be reproduced in whole or in part by any means, mechanical or electronic, without express written permission.

Performance Services
 Design/Build | Construction Management | Construction

Performance Services
 4575 Hayes Point Blvd.
 Indianapolis, IN 46226-2855
 ph 317.713.1750 | fx 317.713.1751
 www.performance-services.com

RENOVATIONS TO
2025 BOND RENOVATIONS TO PRAIRIE LEA GYM
 6910 Sam Marcoe Highway #80, Prairie Lea, TX 75861
PRAIRIE LEA INDEPENDENT SCHOOL DISTRICT
 PHASE 2 BID 1

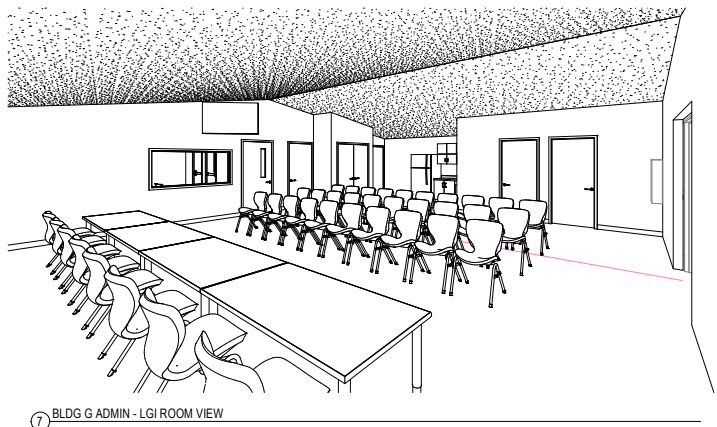
PSJ PROJECT NO.	482-K25-303
DATE:	2024-04-21
DRAWN BY:	Author
CHECKED BY:	Checker

No.	DATE	DESCRIPTION
REVISIONS		

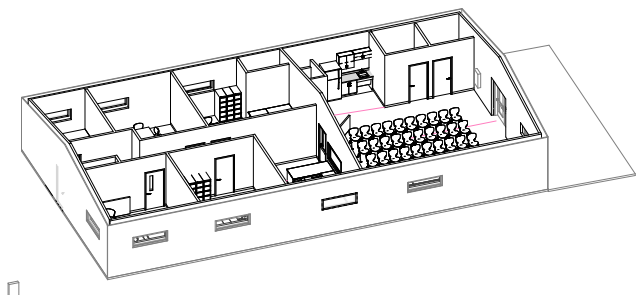
DEVELOPMENT SET

SHEET
A100

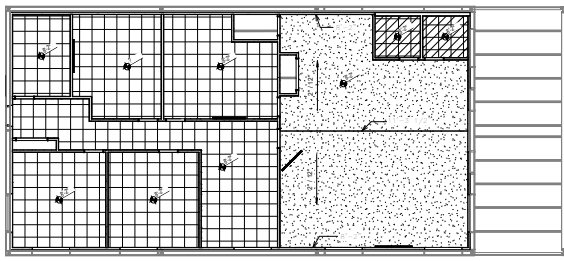
CONCEPT FLOOR PLANS



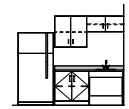
7 BLDG G ADMIN - LGI ROOM VIEW



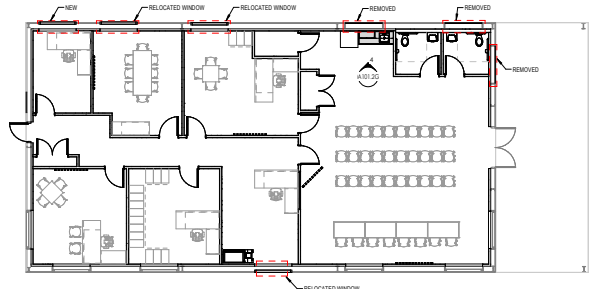
6 AERIAL BUILDING ISOMETRIC



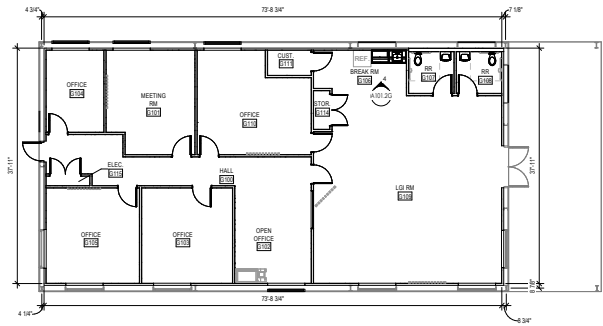
5 ADMIN BLDG G - REFLECTED CEILING PLAN



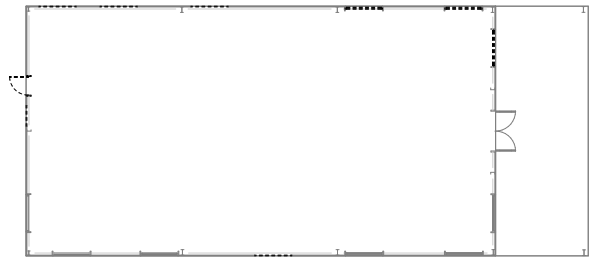
4 BREAKROOM ELEVATION



3 ADMIN BLDG G - FIRST FLOOR EQUIPMENT PLAN



2 ADMIN BLDG G - FIRST FLOOR



1 ADMIN BLDG G - FIRST FLOOR DEMOLITION PLAN

SIGNATURE

PROPRIETARY AND CONFIDENTIAL

This drawing and its contents are the property of Performance Services and shall not be reproduced in whole or in part by any means, mechanical or electronic, without express written permission.



Performance Services
4670 Haven Point Blvd.
Indianapolis, IN 46239-2199
ph 317.713.1150 | fx 317.713.1151
www.performance-services.com

RENOVATIONS TO
2025 BOND RENOVATIONS TO PRAIRIE LEA E.S.
6910 San Marcos Highway #800, Prairie Lea, TX 76881
PRAIRIE LEA INDEPENDENT SCHOOL DISTRICT
PHASE 2 BID 1

PSJ PROJECT NO. 400-425-3832
DATE: 2024-04-21
DRAWN BY: Author
CHECKED BY: Checker

REVISIONS

ISSUE FOR PROPOSAL

SHEET
A101.2G

ADMIN BLDG FLOOR
PLANS





















Stay
fancy
The best
teachers!
Presley D
4th

I has been
my honor to know
you! Thank you
for being awesome

LOVE this
coffee bar
THANK YOU















