

*Community, Pride, Tradition*

**CAPITAL PROJECT PRESENTATION**



- Introduce District Partners
- Overview of the Proposed Project
  - Financial Impact
  - Questions





# HIGHLAND

## ASSOCIATES

Architecture | Engineering | Interior Design

- Architecture
- Engineering
- Interior Design



- Construction Management
- Estimating

## FISCAL ADVISORS & MARKETING, INC.

Municipal Advisors to Local Governments

- Financial Consulting

# How Was the Scope of Work Determined?



- **BCS or Building Condition Survey**

- **What is a Building Condition Survey (BCS)?**

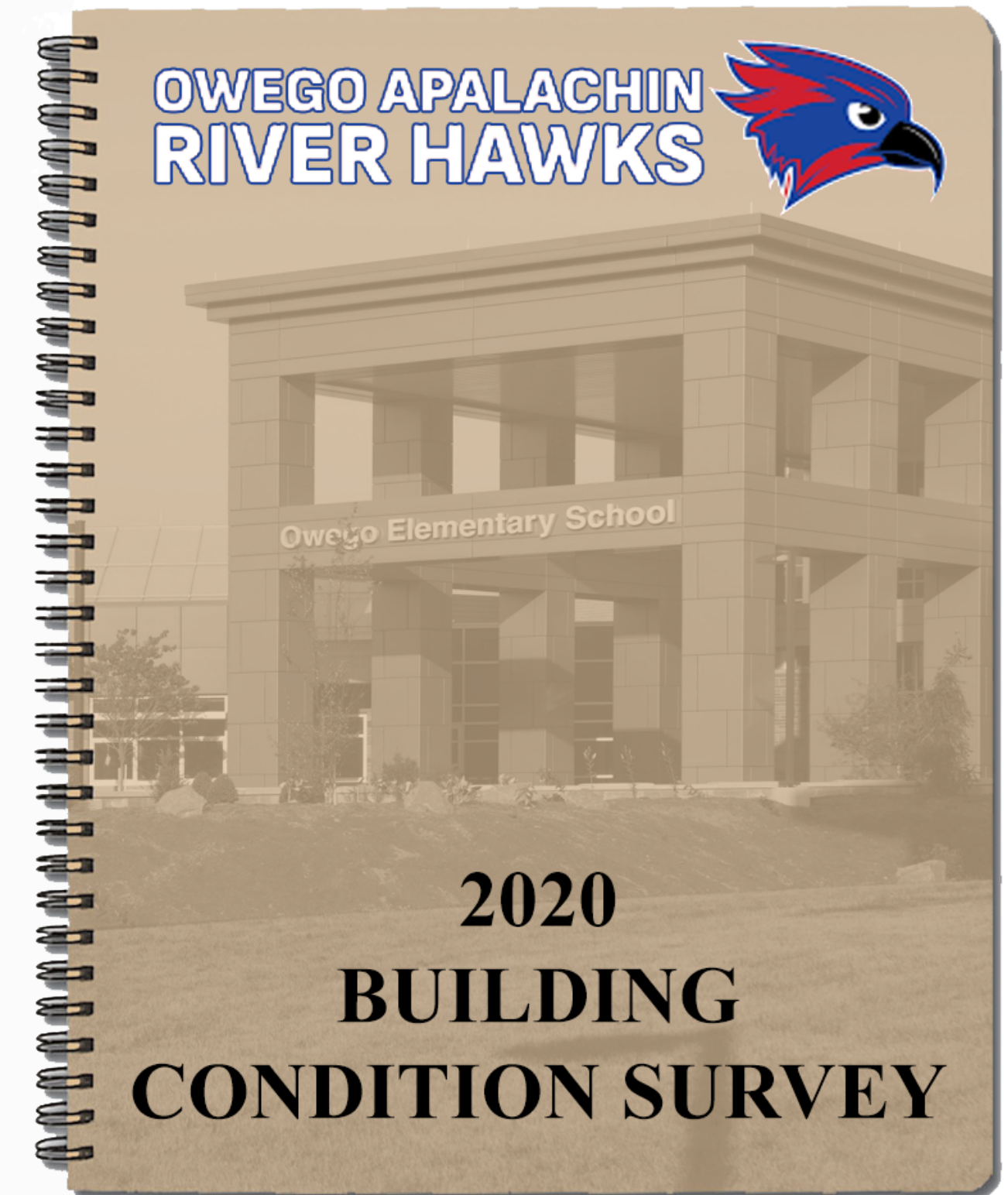
- All school districts are required by the New York State Education Department (NYSED) to conduct a building survey every five years. The goal of the five-year plan is to collect information on the district's infrastructure and prioritize facility needs on a district-wide basis. The information collected in the BCS assists the district with itemizing the needs of each building and prioritizing the most essential repairs.

- **Changes in Curriculum Requirements**

- **Faculty, Staff, and Student Input**

- **Public Input**

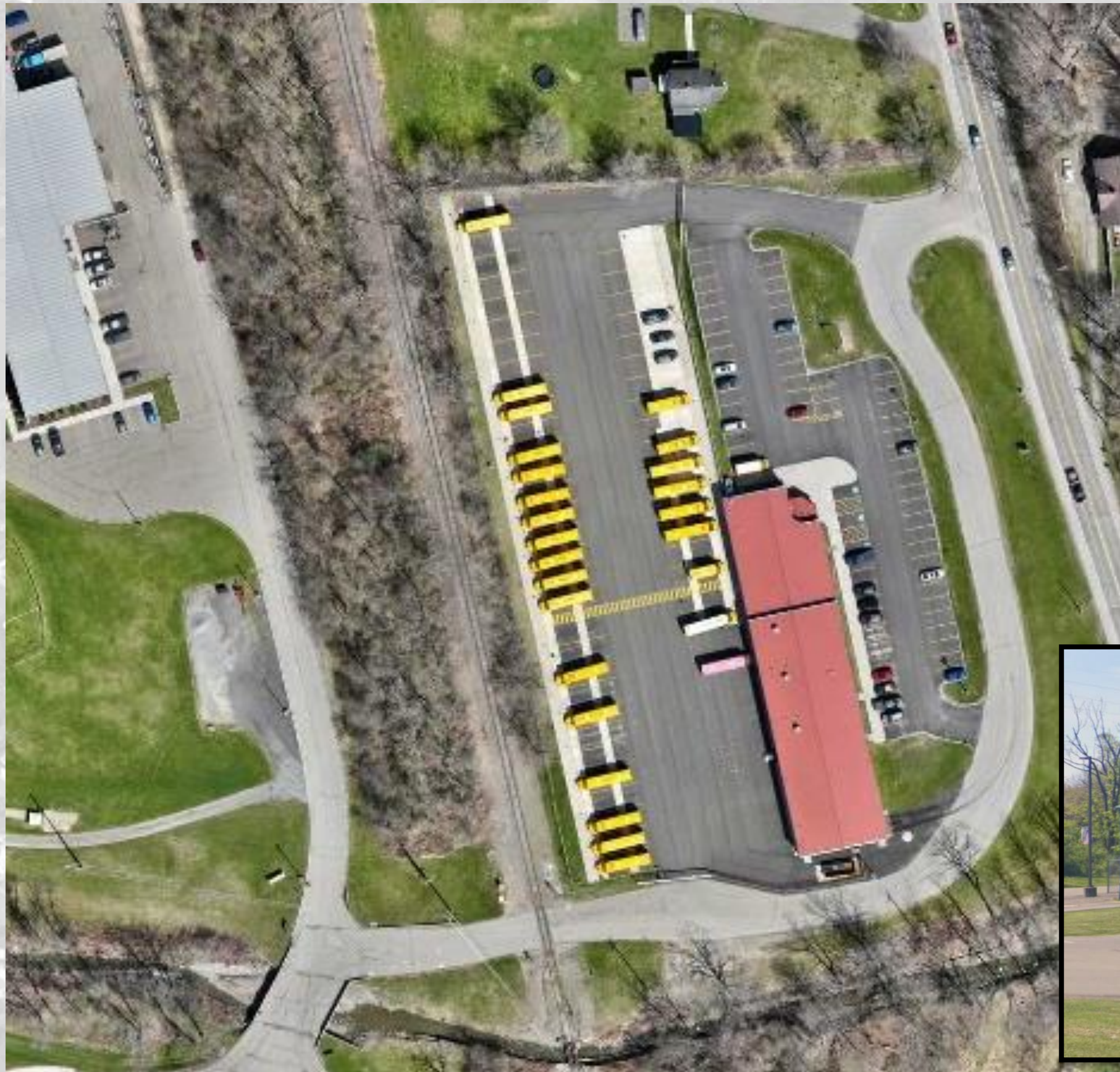
- **All items are reviewed and prioritized by the Capital Project Committee**





## Bus Garage Proposed Scope of Work

- Replace Portions of Sidewalks
- Replace Metal Panel at the Rear of the Building





## AES Proposed Scope of Work

- Replace Portions of Sidewalks
- Replace Exterior Doors
- Replace Security Film
- Repair/Replace Canopy
- Replace Electrical Power Distribution
- Replace Playground Equipment
- Replace PTAC Units in Administration
- Replace Kitchen Equipment & Renovate Kitchen Area
- Renovate Cafeteria
- Auditorium Improvements
- Additional Infrastructure

# Apalachin Elementary School Playground



## Potential Upgrades Include:

- ADA Upgrades
- New Age-Appropriate Equipment
- New Pavilion
- New Hard Surface



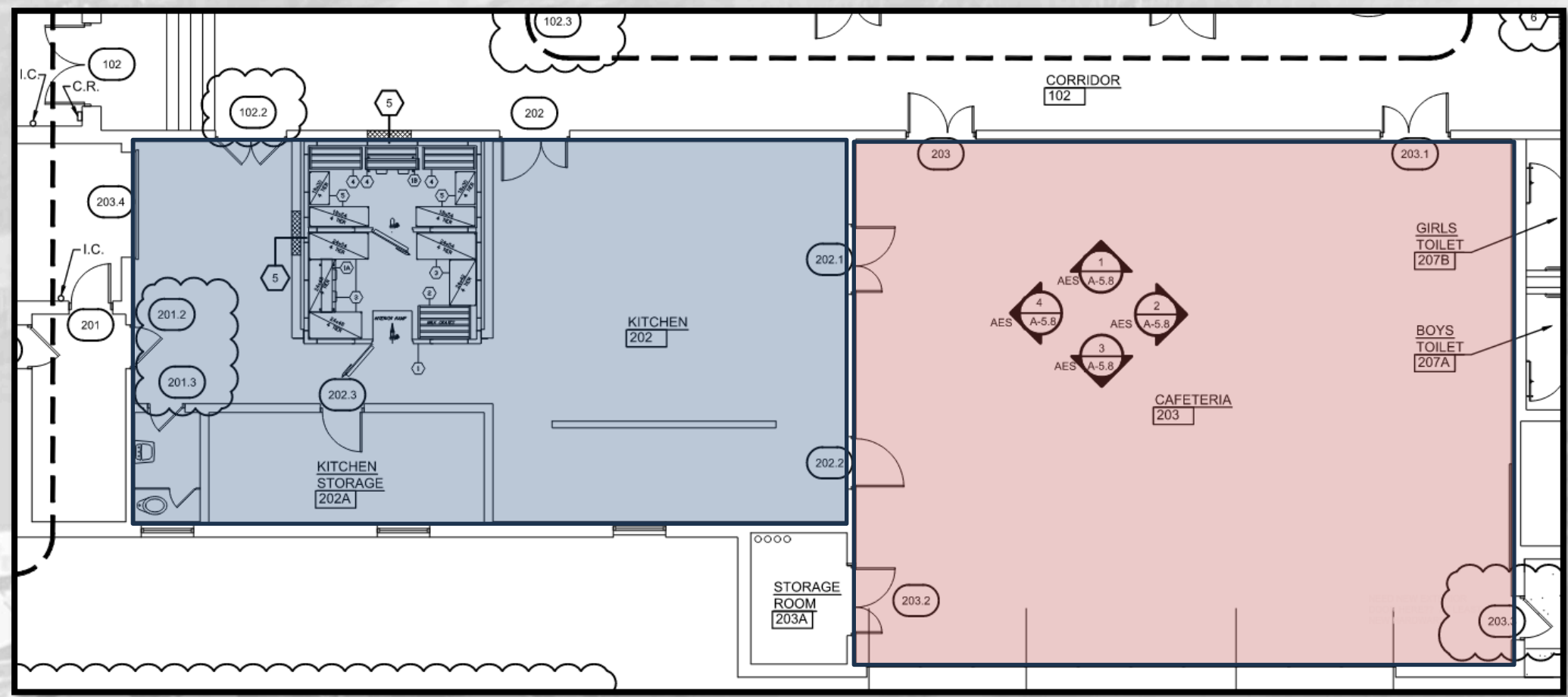


## Potential Upgrades Include:

- Replace the Existing Stage
- Sound & Lighting Upgrades
- Ceiling Replacement

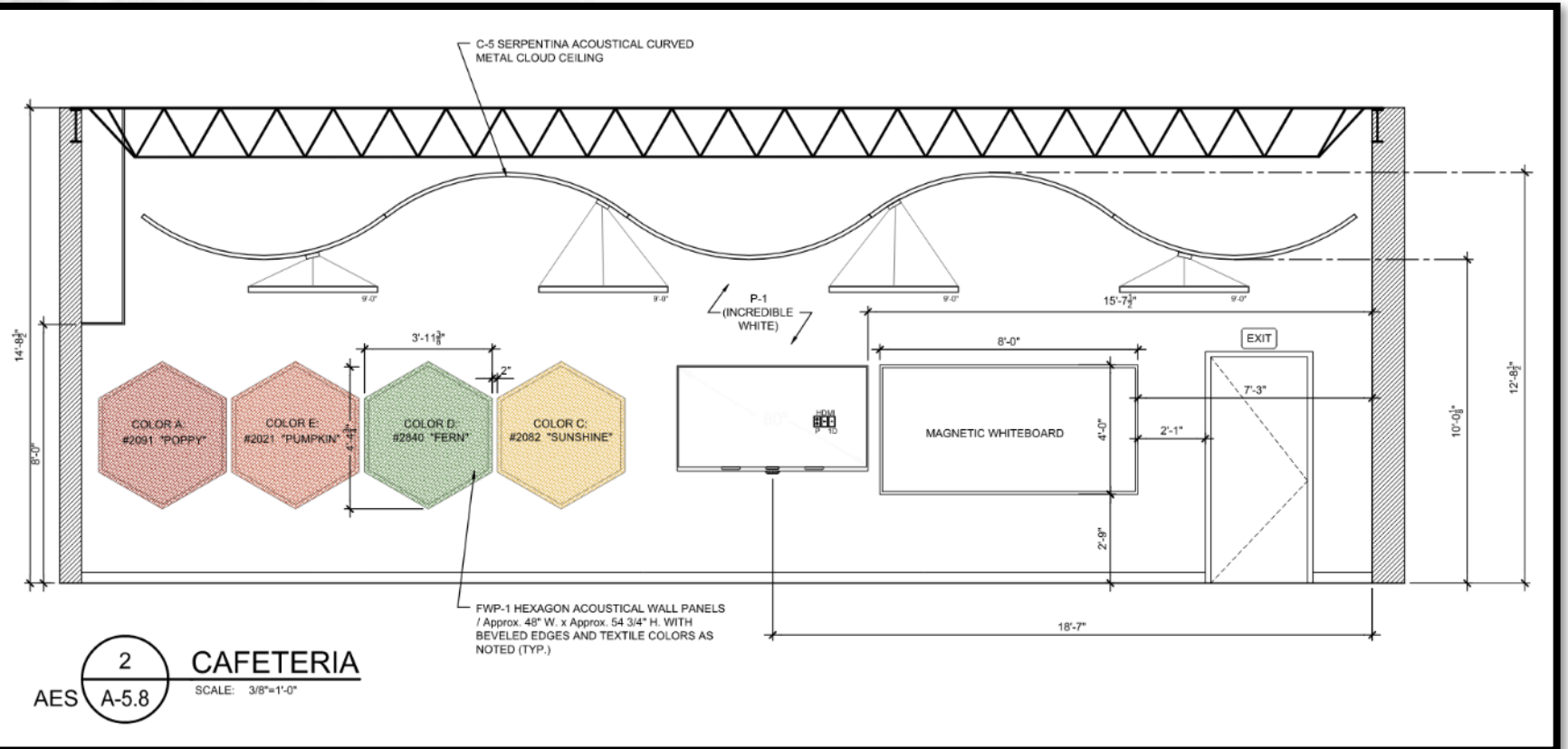
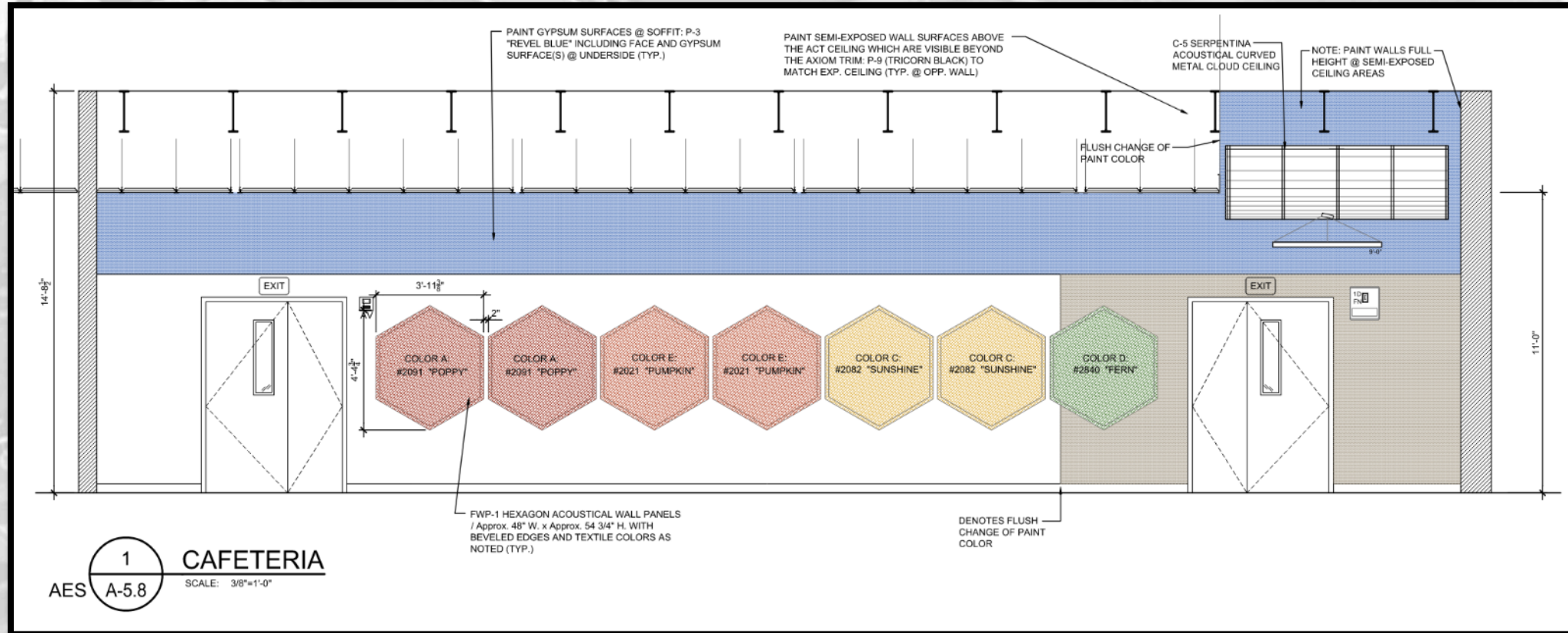


# Apalachin Elementary School Kitchen & Cafeteria



## Potential Upgrades Include:

- New Finishes
- New Kitchen Equipment
- Upgrade HVAC





## OFA/OAMS Proposed Scope of Work

- Brick Repointing
- Replace Exterior Doors
- Repair Cracks in Corridors
- Replace Doors in HS
- Replace Hot Water System at HS
- Replace Lighting (Interior & Exterior)
- Replace Pool Building Skin
- Replace HS/MS Roofs
- Replace MS HVAC
- Replace Middle School DDC
- Abate and Replace VCT Floors

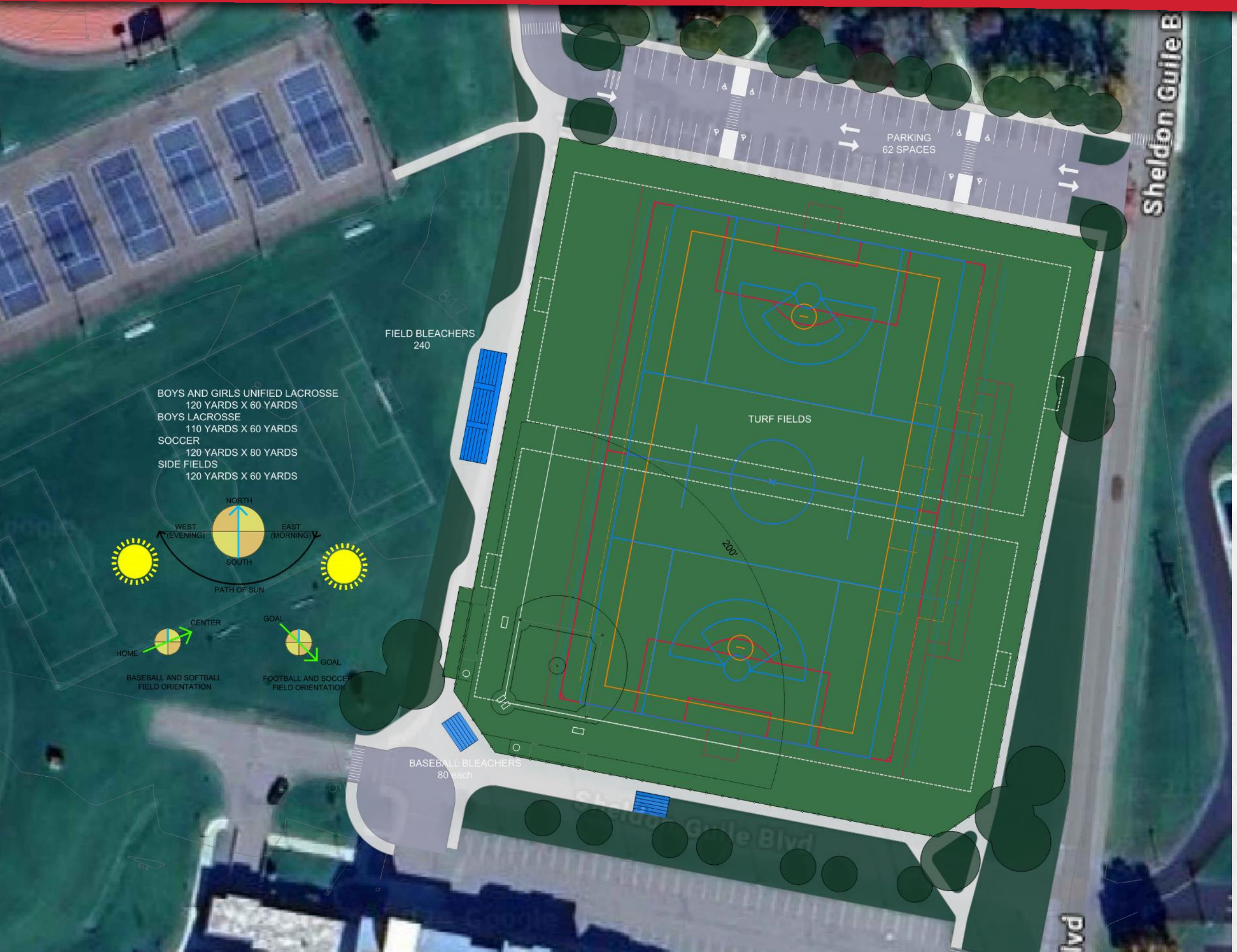




## OFA/OAMS Proposed Scope of Work

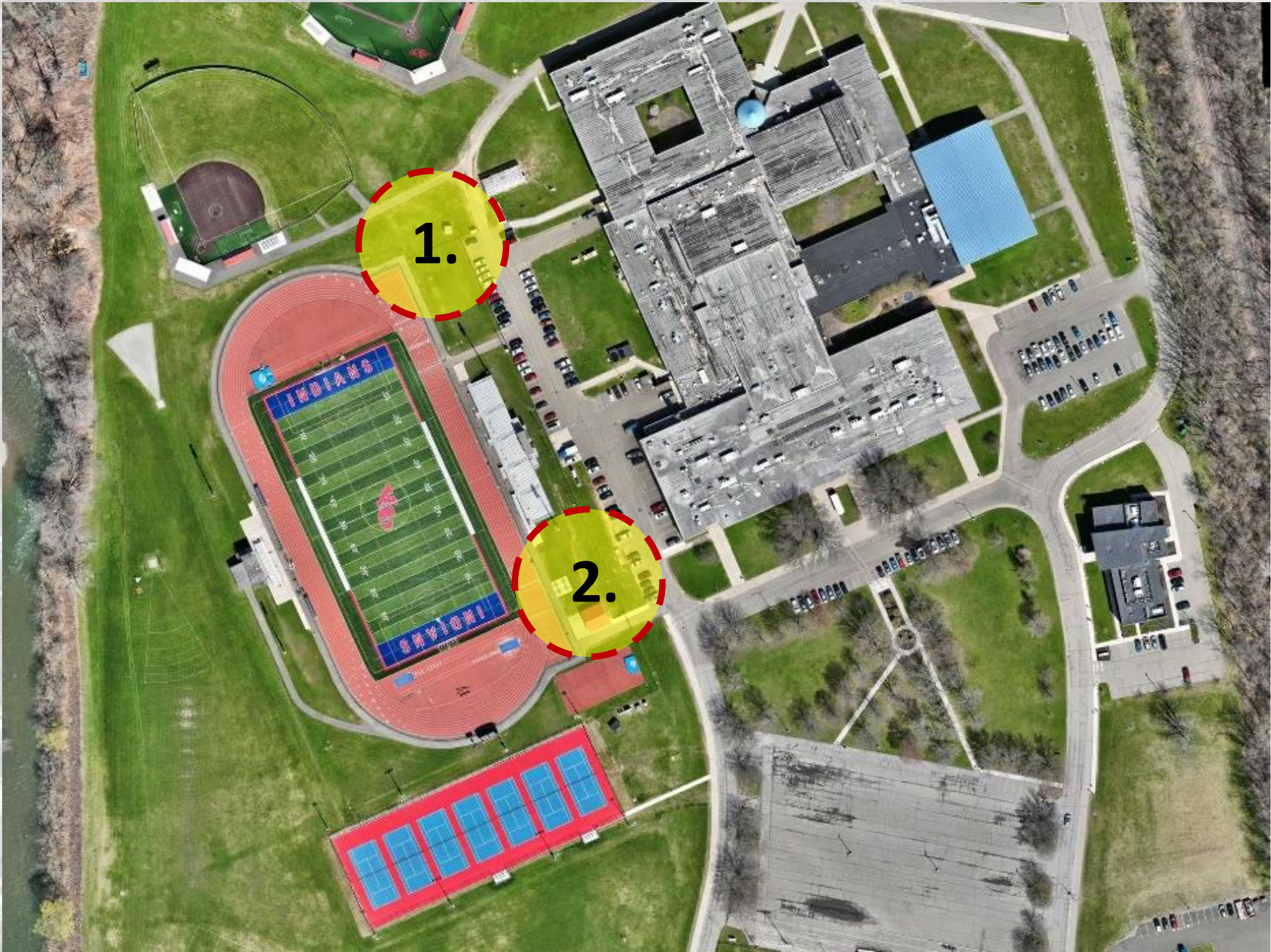
- UV/ Exhaust System Replacement
- Air Conditioning Split Unit for Pool Offices
- Replace Terminal Heating Units
- Classroom Renovation (Math Wing)
- Plumbing
- Career Center
- Auditorium (Lights and Sound)
- Parking Lots
- Additional lacrosse/soccer fields center parking lot
- Concession Building
- FF and E
- Maintenance Building Build out





## Island Fields Proposed Scope of Work (Alternate)

- **Artificial Turf Surface**
  - **Boys And Girls Unified Lacrosse**
    - 120 Yards X 60 Yards
  - **Boys Lacrosse**
    - 110 Yards X 60 Yards
  - **Soccer**
    - 120 Yards X 80 Yards
  - **Side Fields**
    - 120 Yards X 60 Yards
  - **Baseball**
    - 200' x 200' x 200'
- **New Seating**
  - Field Sports: 240 seats
  - Baseball: 160 seats



## Two Potential Locations

- 1. New Building @ Northeast Side of the Stadium
- 2. New Building @ Southeast Side of the Stadium

# Owego Free Academy Aquatics Center Exterior



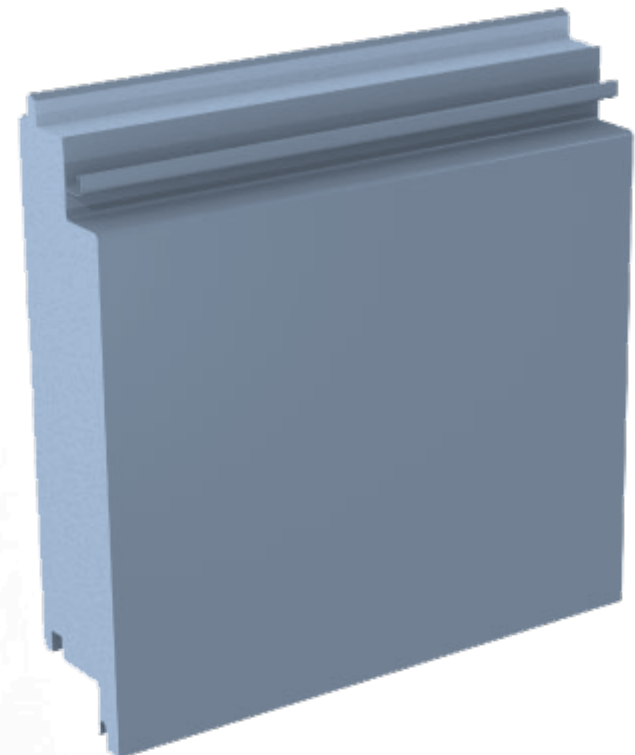
## Potential Upgrades Include:

- New Metal Panel Skin
- New Roof
- New Windows

Textured Metal Panel



Flat Metal Panel



Light Diffusing Glass





## Three Specific Goals For Our Cooperative Education:

- Develop career pathway programs based on student interests and community needs.
- Establish partnerships with local businesses and organizations to support cooperative learning positions, internships, and job shadowing.
- Fulfill current and future workforce demands

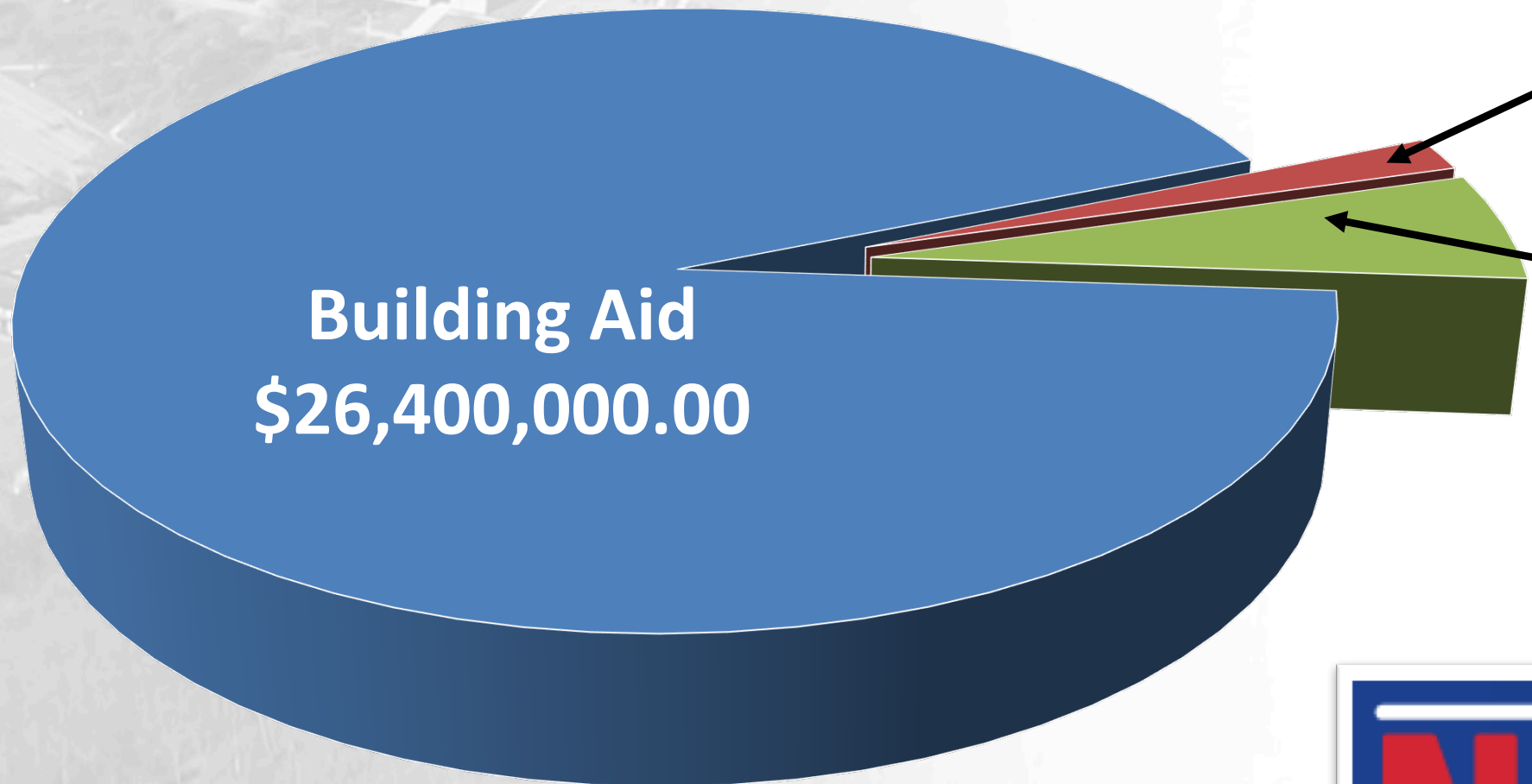
## OACSD has established six specific career pathways:

- Health and Medical
- Business and Finance
- Information Technology/Computer Science
- Engineering, Technical Trades, and Advanced Manufacturing
- Agriculture
- Humanities

# Funding Source Breakdown



**TOTAL PROJECT VALUE:  
\$28,500,000**



**Building Aid  
\$26,400,000.00**

**Capital Reserve  
\$500,000.00**

**General Fund  
\$1,600,000.00**

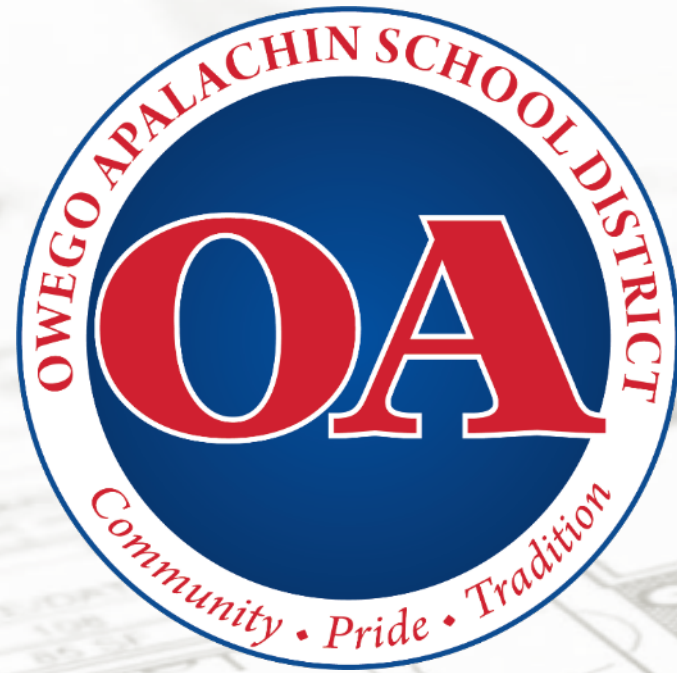
**NO ADDITIONAL  
TAX IMPACT**



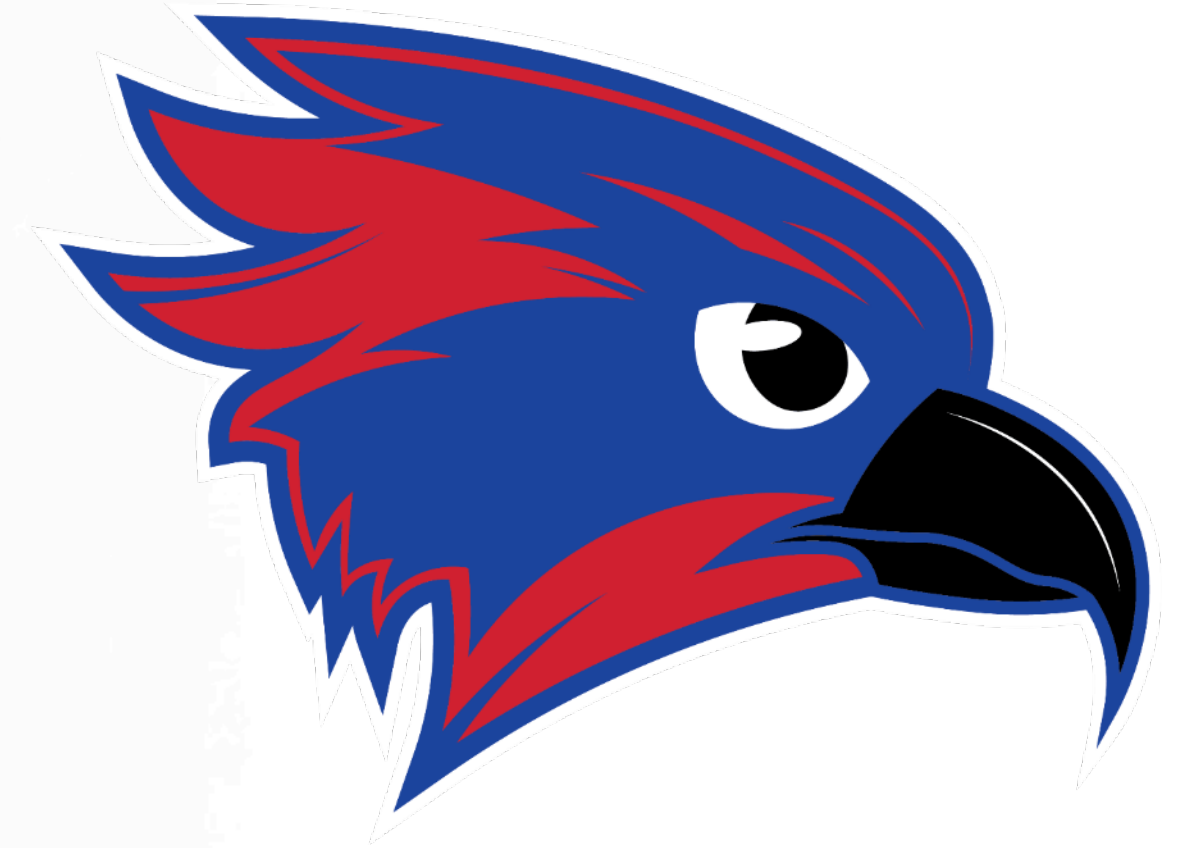
OWEGO APALACHIN CENTRAL SCHOOL DISTRICT  
**SCHOOL BUDGET, CAPITAL PROJECT  
& BOARD OF EDUCATION VOTE**



**VOTE MAY 21ST | 12PM-8PM**



**Q & A**



*Community, Pride, Tradition*

---

**T H A N K   Y O U**

---