

6TH GRADE

NEWSLETTER

IMPORTANT DATES

- JAN 9 - THURSDAY
 - Q2 REPORT CARDS
- JAN 20 - MONDAY
 - MLK JR DAY
 - NO SCHOOL
- FEB 4 - TUESDAY
 - Q3 PROGRESS REPORTS
- FEB 14 - FRIDAY
 - TEACHER WORKDAY
 - NO SCHOOL

STUDY HALL

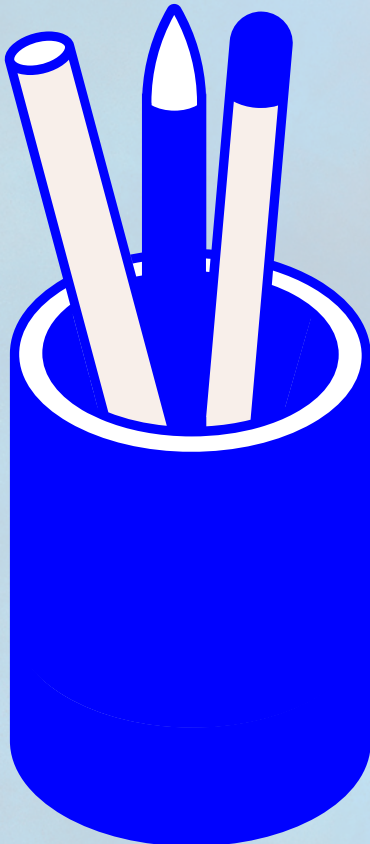
STUDENTS WHO NEED TO MAKE UP ASSIGNMENTS OR NEED EXTRA HELP CAN GO TO MRS. RADCLIFF'S ROOM DURING GRIZZLY TIME ON MONDAYS AND FRIDAYS RATHER THAN GO TO CLUBS

REMINDER!

BRING YOUR CHROMEBOOK AND CHARGER
TO SCHOOL EVERY DAY!

MATH

**STUDENTS SHOULD
CONTINUE TO WORK ON
THEIR I-READY
PATHWAYS. THIS IS THE
BEST WAY TO PREPARE
FOR OUR UPCOMING
NC CHECK-INS ON
WEDNESDAY, JANUARY 22**

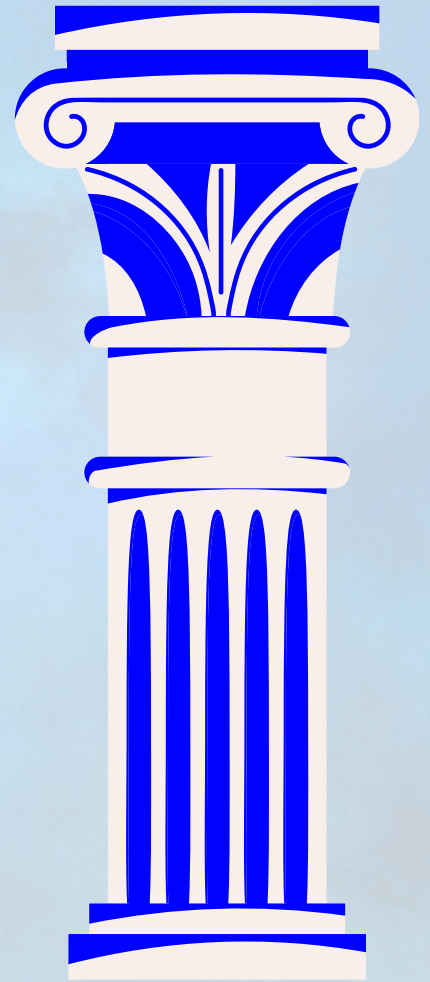


ELA

**WE WILL BEGIN A NEW UNIT ON "OUR
CHANGING OCEANS." IN THIS UNIT,
STUDENTS READ, WRITE AND DISCUSS THE
IMPACT ON OUR OCEANS OF PLASTIC
POLLUTION, OVERFISHING, AND SEA LEVEL
RISE. BY THE END OF THIS UNIT, STUDENTS
WILL CREATE THREE INFOGRAPHICS THAT
EXPLAIN A PROBLEM OUR OCEANS AND
COASTAL COMMUNITIES ARE FACING,
EXPLORE ITS RELEVANCE, AND DESCRIBE
WHAT SHOULD BE DONE ABOUT IT.**

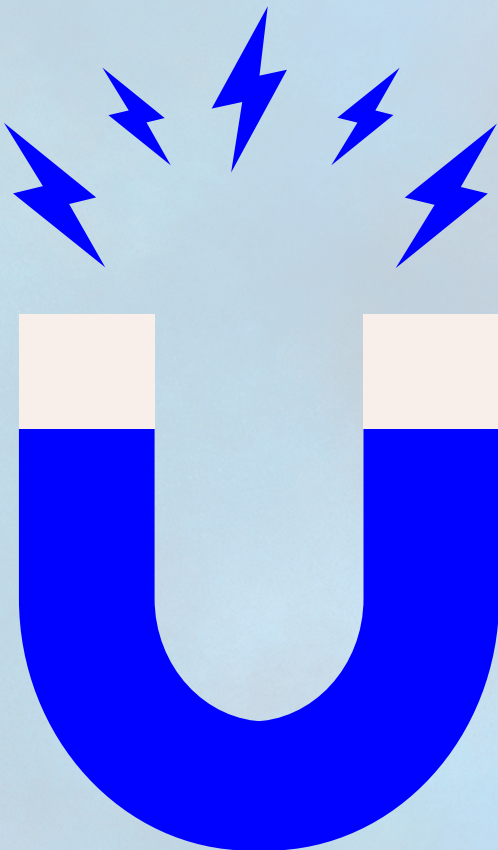
SOCIAL STUDIES

WE'RE STARTING OFF THE SEMESTER WITH ANCIENT GREECE. FROM MYTHOLOGY TO PHILOSOPHY TO DEMOCRACY, WE'LL EXAMINE THE CULTURE THAT SO HEAVILY INFLUENCED MANY MODERN CULTURES... ESPECIALLY OUR OWN.



SCIENCE

5...4...3...2...1...! WE HAVE LAUNCHED INTO OUR UNIT ON SPACE. STARTING OFF, WE WILL DEEPEN OUR UNDERSTANDING OF EARTH, SUN, AND MOON SYSTEMS IN ORDER TO ANSWER THE QUESTIONS OF "WHY DO WE HAVE SEASONS?" AND "WHY DO THE TIDES CHANGE?" THIS IS AN EXCITING UNIT LOOKING AT HOW PATTERNS IN OUR UNIVERSE AFFECT OUR LIVES EVERY DAY ON EARTH.



CLASSROOM NEEDS

WE'RE ALWAYS IN NEED OF SCHOOL SUPPLIES AND GREATLY APPRECIATE ANY AND EVERYTHING YOU WOULD LIKE TO SEND, BUT RIGHT NOW, WE COULD REALLY USE:

TISSUES! TISSUES! TISSUES!

6TH GRADE CFMS BASKETBALL PLAYERS

MADISON MILLS, MARI REYES, SIDNEY HIGHSMITH

CFMS BASKETBALL SCHEDULE

TUE JAN 21 VS BURGAW

THU JAN 23 @ WEST PENDER

MON JAN 27 @ PENDERLEA

THU JAN 30 VS SURF CITY

MON FEB 3 @ TOPSAIL

THU FEB 6 @ BURGAW

