



Windom Public Schools

1400 17th Street | PO Box 177 | Windom, MN 56101

Phone: 507-831-6910 | Fax: 507-831-6919 | www.windom.k12.mn.us

LEARNING. LEADING. EXCELLING. TOGETHER.

Windom Schools will create a safe, responsive, and nurturing environment where every learner receives a high-quality education that empowers them with the skills and knowledge needed for a successful future.

Dates to Know

- September 2 -**
First Day for Grades 5-12
- September 2&3 -**
Entrance Conferences
Grades PreK - 4
- September 4 -**
First Day for Grades
Prek - 4
- October 15 -**
Staff Development
- October 16 & 17 -**
MEA Fall Break
- October 31-**
Last day of Quarter 1;
Half Day Early Out
- November 6-**
Night Parent Teacher
Conferences
- November 7 -**
Parent Teacher Confer-
ences; No School
- November 27 & 28 -**
Thanksgiving Break
- December 22-January 2**
Winter Break
- January 16 -**
Last day of Quarter 2;
Half Day Early Out
- January 19 -**
MLK, Staff Development
- February 16 -**
President's Day - No
School (*potential make
up day for weather*)
- March 20 -**
Last day of Quarter 3;
Half Day Early Out

District News

**Welcome Back to School
Learning. Leading. Excelling. Together.**

Dear Families,

As we begin a new academic year, I would like to extend a warm welcome to each of you. I hope your summer was both restful and rejuvenating, and that you are as eager as we are to embark on another year of growth and achievement.

Guided by our shared vision—*Learning, Leading, Excelling, Together*—we remain committed to providing high-quality educational experiences for all students, from early childhood through high school.

Several new initiatives are underway this year. In our elementary school, all educators have completed professional development in the Science of Reading and will implement a new, research-based literacy curriculum: Core Knowledge Language Arts (CKLA). This program is designed to build strong foundational skills and foster a lifelong love of reading.

Our Preschool and Early Childhood Family Education (ECFE) programs are also beginning the year with a new curriculum, Frog Street,



Jamie Frank
Superintendent
jfrank@isd177.com
507.831.6910 ext. 502

which promotes school readiness through purposeful play, early literacy, and social-emotional development.

At the middle and high school levels, our focus this year is on building a multi-tiered system of support (MTSS) to ensure that all learners — regardless of their individual needs— receive the necessary academic, behavioral, and social-emotional support for success. To support this goal, a new high school intervention teaching position has been created through grant funding to provide targeted instructional support for students requiring additional assistance.

We are enthusiastic about the opportunities this school year holds and remain grateful for your continued partnership. Together, we look forward to a year of meaningful learning, growth, and achievement.

Sincerely,
Jamie Frank
Superintendent
Windom Area Schools

Information - Where to find what you need!

Stay up to date with the latest information!

District Website - windom.k12.mn.us

Seesaw is used in grades K-4 for student engagement that inspires students of all ages to do their best. Families only see their child's work and can leave comments.

Google Classroom is an online platform that K-4 teachers use to create assignments digitally. Students complete the assignment and return it to the teacher for feedback.

Infinite Campus - Windom Schools has updated our Student Information System from Skyward to Infinite Campus. It is very important that ALL contact information is up-to-date in Infinite Campus as it is the

information the district will use to contact you. Beginning this school year, students in grades 5–12 will use Infinite Campus as their primary educational platform. This means assignments, grades, and other academic tools will now be accessed through Infinite Campus, replacing both Schoology and ICU. It's very important that parents/guardians log in to their Infinite Campus account so you can stay informed about your child's academic progress throughout the year.

Social Media -

Facebook: Windom Area School District - ISD 177
ECFE/Bridges Preschool - Windom
Twitter: @WindomEagles



Bryan Joyce
 HS Principal
 bjoyce@isd177.com
 507.831.6910 ext. 301

High School News!

Welcome to the 2025-2026 school year! Hard to believe that this century is a quarter over! It always makes me laugh a little when students say “you were born in the 1900’s?” While we progress through the 21st century (with many educators including myself from the 20th) the constant at Windom Area High School remains - we are building relationships with students centered on growth and positivity while preparing learners with the knowledge and skills needed to be productive and engaged citizens. I am pumped to start my 20th year at Windom Schools this fall.

During the 2024-2025 school year, our staff focused on improved comprehension and literacy skills. Key areas within instructional practices were academic vocabulary and focused notes. We saw major gains in our MCA & STAR scores, while also seeing some strong numbers in college and career readiness in our ACT data. The vast majority (over 80%) of our student body has a B or A average for grades, while attending school at least 90% of the time. Students who need extra support can access this help during Eagle Elevation Hour 3:30-4:15 M, Tu, Th & F, or during Study Table on Wednesdays or any number of the infinite opportunities before and after school to seek help directly from teachers. We will continue this focus for our academics during the 2025-2026 school year.

Windom students had an array of opportunities to participate and excel in fine arts during the 2025-2026 school year. Our fall & winter musicals showed again the strength of our performing arts programs. Our students are so talented and seeing the confidence along with a family atmosphere that our productions provide is always a highlight of the school year. Band and choir had an outstanding school year and our student enrollment numbers are strong as we head into this school year. The 10-12 grade band and choir students will also have the opportunity to travel and perform at Disney in March of 2026! Speech once again had a strong competition season with students earning state bids - year in and year out our speech team competes with the best in the area and each student grows in their confidence and ability to speak in public - such an important attribute regardless of what century we are in!

Windom students compete in multiple athletic events throughout each season - in the fall we have football, volleyball, cross country and soccer. In the winter we compete in boys & girls hockey, boys and girls basketball, wrestling & gymnastics. Finally, in the spring we offer baseball, softball, boys & girls track & boys & girls golf. In addition to competitive athletics, Robotics and FFA offer even more extension opportunities for competition but also growth and skills display. Of our over 320 students, we have an extremely high participation rate in athletics and activities. Regardless of season, students have something at Windom Schools to help them connect to others and provide a sense of community and belonging.

We had a successful transition to Infinite Campus last year and we have decided that this platform meets our communication and classwork needs. We will no longer be utilizing ICU or Schoology. All course content and grading will be contained in Infinite Campus.

We continue the same expectations for attendance. Please communicate with the office should your student be absent for any reason. Please continue to call/email/send a note to the office. The office may be emailed for attendance to attendancemshs@isd177.com or you can call/text our attendance line at (507) 221-3511. More information regarding attendance will be shared at orientation.

Orientation for students in grades 9-12 will be held in the Nest (Blue Gym) on Wednesday, August 20 at 7:00 PM. **We request that a student and parent attend the orientation.** Basic expectations for attendance, behavior, grading, cell phone usage, Chromebook usage, and overall announcements for the school year will be communicated. Additionally, any fees/forms can be completed at this time.

All Chromebook fees must be paid before Chromebooks are distributed. There are no new Chromebook fees so any fees listed are related to damages from the 24-25 school year, or previous years. Chromebooks will be issued to all students in grades 9-12 this year. Students will receive Chromebooks during the first day of school during period 1. There will not be an insurance coverage fee for Chromebooks, however, fees will be assessed to cover any repairs needed for Chromebooks throughout the school year. Repairs due to defect or normal wear will not be assessed. Fees for replacement due to mistreatment of the Chromebook may be up to the entire cost of replacement.

Final updates for the 25-26 school year will be communicated via email, text message, and/or on our school’s social

media platforms. Here are a couple items to keep in mind:

- Fall sports eligibility meeting will be held Monday, August 4th at 7:00 PM in the Elementary Commons.
- Current students entering grades 9-12 can meet with Mrs. Squires/Mrs. Nielsen on Tuesday, August 19th (8:30-12:00), Wednesday, August 20th (8:30-3:00) or Thursday, August 21st (8:30-3:00) to discuss schedule changes as needed. A sign up will be sent to sign up - please check your school email.
- Students new to Windom Schools please plan to come to new student orientation Tuesday, August 19th. High school new student orientation will take place from 1:00-2:00 & Middle School (grades 5-8) new student orientation will take place from 2:00-3:00.
- School will begin at 8:10 a.m. and dismiss at 3:15 p.m. M, TU, TH & F. Wednesday dismissal is at 2:35 PM to allow staff collaborative planning time.

See you for the first day of school Tuesday, September 2nd!

Bryan Joyce
 Principal, Windom Area High School

Activity Fees

Activity Fee for Students to participate in an athletic or academic activity:

- Grades 7-9 = Free
- Grades 10-12 = \$10

Fees to Attend Athletic Events:

- Windom Area Student = Free
- Students (Non-WAS) = \$5
- Adults = \$7

Passes/Deals Available:

- Punch Card \$40 for 10 Entries into events
- Adult Season Pass \$70
- Golden Eagle Pass - Residents of the Windom District who are 62 years or older are eligible for a free lifetime pass to home athletic events.
- Online ticketing and passes are available through GoFan

Ticket Price for tournaments and playoff games will vary. Passes are only good for home regular season games.



Dane Nielsen
Grade 5-8 Principal
dnielsen@isd177.com
507.831.6910 ext. 305

Middle School News!

Welcome Back to Windom Area Middle School! From Principal Dane Nielsen

Dear WAMS Students and Families,

Welcome back to another amazing year at Windom Area Middle School! We hope your summer was full of sunshine, fun, and a little well-deserved relaxation. We're excited to kick off the 2025-2026 school year with energy, enthusiasm, and Eagle pride!

At WAMS, we're continuing to focus on what works: strong relationships, engaging academics, and a positive school culture. Our 5th-8th grade structure stays the same, with 5th graders enjoying a homeroom setting while rotating for core subjects.

Across all grades, students will experience:

- A full schedule of meaningful learning
- Hands-on exploration
- A wide variety of electives and extra-curriculars

Middle school is a time to grow, discover, and shine—and we're ready to support every student on that journey.

EAGLE'S NEST

MS/HS SCHOOL STORE
OPEN TUESDAYS AND THURSDAYS
7:40 - 8:10 AM

ITEMS AVAILABLE:

- + PENCILS
- + PENS
- + FOLDERS
- + STYLUS PENS
- + NOTEBOOKS
- + SNACKS
- + WATER
- + NOVELTY ITEMS



Get Involved, Stay Connected

Our amazing staff is ready to make this a year of connection, challenge, and celebration. Whether diving into a novel, solving math problems, experimenting in science, or exploring music, art, and athletics, there's something for everyone at WAMS.

We encourage all students to:

- Join an activity
- Try a new sport
- Be part of something new

This is the time to stretch your wings!

We'll continue using Infinite Campus for grades, schedules, and updates. Please log in regularly and use the Parent Portal to stay informed.

Reminder: Chromebooks will **stay at school**, charged and ready for daily learning.

Back-to-School Orientation Nights

Meet your teachers, grab your schedule, and get ready for day one!

5th & 6th Grade Orientation

- Wednesday, August 20 at 6:00 PM
- MSHS Nest (Blue) Gym

7th & 8th Grade Orientation

- Thursday, August 21 at 6:00 PM
- MSHS Nest (Blue) Gym

Computers will be available to update contact info and complete online forms in Infinite Campus. More details will come in early August.

Our Commitment

We are dedicated to maintaining a safe, respectful, and inclusive environment. Students are expected to treat one another and our staff with kindness, integrity, and empathy. Together, we will keep building a school culture where everyone feels supported and valued.

Important Dates to Remember

August 4, 7:00 PM – 7th-12th Grade Fall Eligibility Meeting (Elementary Commons)

August 11 – First Day of Fall Eagle Athletic Practices

August 19, 2:00-3:00 PM – New to District Orientation (Grades 5-8) (MSHS Office)

August 20, 6:00 PM – 5th & 6th Grade Orientation (MSHS Nest Blue Gym)

August 21, 6:00 PM – 7th & 8th Grade Orientation (MSHS Nest Blue Gym)

September 2 – First Day of School for Grades 5-12

We can't wait to see the halls buzzing with energy, the classrooms filled with curiosity, and our students soaring to new heights.

Here's to a fantastic year—Go Eagles!

Warmly,

Dane Nielsen

Principal, Windom Area Middle School

ATTENTION ALL ATHLETES!

THE STATE OF MINNESOTA AND WINDOM AREA SCHOOLS REQUIRE YOU TO HAVE A SPORTS PHYSICAL BEFORE PARTICIPATING IN A SPORT FOR THE 2025-2026 SCHOOL YEAR. SPORTS PHYSICALS ARE VALID FOR THREE YEARS FROM THE DATE OF THE EXAM.

IF YOU PLAN TO PARTICIPATE IN ATHLETICS DURING THE 2025-2026 SCHOOL YEAR, PLEASE MAKE A SPORTS PHYSICAL APPOINTMENT AS SOON AS POSSIBLE.

Get the Sports Qualifying Physical Examination Medical Eligibility Form off the website: www.windom.k12.mn.us

If you prefer, you may pick up a sports physical form in the MSHS office. Please turn in the completed form to the office



BEFORE THE 2025-2026 SCHOOL YEAR STARTS, IT IS IMPORTANT TO COMPLETE THE MSHS LEAGUE ELIGIBILITY FORM. THE STATE OF MINNESOTA AND WINDOM AREA SCHOOLS REQUIRE THIS BE SUBMITTED ONE TIME PER SCHOOL YEAR BY STUDENTS WHO ARE PARTICIPATING IN AN ACTIVITY OR SPORT. HERE IS THE PROCESS FOR ACTIVITY SIGN UP AND TO COMPLETE THE MSHS LEAGUE ELIGIBILITY FORM:

1. LOGIN TO INFINITE CAMPUS
2. GO TO SCHOOL STORE TAB
3. SELECT YOUR SCHOOL STORE
4. SELECT ACTIVITIES
5. CHOOSE YOUR SPORT
6. THE PRICE AND ELIGIBILITY FORM IS THERE

STUDENTS WILL HAVE TO SIGN THE FORM AND THEN THE PARENT WILL NEED TO LOGIN TO THEIR PARENT PORTAL AND SIGN THE FORM AS WELL



Corey Barfknecht
PreK - 4 Principal
cbarfknecht@isd177.com
507.831.6925 ext. 440

Elementary News!

Dear Windom Families,

Welcome to a new school year at Windom Area Elementary and Bridges Preschool! Whether you are returning or joining us for the first time, we are so excited to partner with you in your child's educational journey. It's going to be a fantastic year full of growth, learning, and connection!

Our staff is passionate about creating a safe, welcoming, and engaging environment where every child feels seen, supported, and challenged. From preschool

through fourth grade, we work to meet each child where they are and help them thrive academically, socially, and emotionally.

At Bridges Preschool, we offer a nurturing, play-based foundation where young learners explore, create, and build the essential skills that prepare them for kindergarten. For our elementary students, Windom Area Elementary provides a wide range of opportunities to learn, grow, and lead. Our curriculum is designed to inspire curiosity and confidence while helping students master essential skills in reading, math, writing, and more.

Beyond the classroom, students will have access to enrichment programs such as physical education, music, art, STEM activities, library time, and social-emotional learning. We also offer additional support services and interventions to ensure all students receive what they need to succeed. Through-

out the year, we look forward to celebrating learning with fun events like family nights, concerts, and field trips.

We believe that strong partnerships with families are key to a successful school experience. Communication and collaboration will remain a top priority as we work together to help each child reach their full potential. Please watch for regular newsletters, updates, and invitations to be involved in school activities.

Thank you for trusting us with your child's education. We are proud to be a part of the Windom community and can't wait to begin a joyful and productive year together!

With Eagle Pride,
Corey Barfknecht
Principal
Windom Area Elementary &
Bridges Preschool

Birth - Age 5 Resources

Early Childhood Screening

Early Childhood Screening will take place on August 27th and October 13, 14, & 15 at Bridges Preschool. Early Childhood Screening is a process that supports children being ready for kindergarten and learning beyond. The program helps find possible health or developmental concerns that may impact a child's learning. It includes a check of vision and hearing, child development, and a review of the child's health. The program helps families access services for their children that will help them to be ready for kindergarten.

Windom Schools recommends that children be screened at age 3. (State law also requires all children to be screened before entering kindergarten.)

Three reasons to screen at age 3:

1. Screening can help your child be ready for school.
2. Any health or developmental concerns can be found earlier and help provided sooner.
3. Because screening is free, it's easy and it's good for your child!

When your child turns 3 years old or if your child is 3, 4, or 5 years old and hasn't been screened: Call Caitlyn at Bridges Preschool at 507-831-6940 or email cgilbertson@isd177.com to schedule an appointment.

Early childhood screening helps:

1. You find out how your child is doing.
2. Connect you with early childhood programs and services.
3. Answer your parenting questions.

District News - Page 4

Help Me Grow

Did you know that Windom Schools has an Early Intervention Program for Infants and Toddlers?

The Early Intervention program exists to help families with young children who may be experiencing developmental delays, or may have a condition or syndrome known to produce developmental delays. This is a free program with specialized staff that could provide special instruction, including speech and occupational therapy.

Sometimes as parents we have concerns about our baby or young child. Babies and toddlers grow and change quickly, and they all develop at their own rate. Some children may need some extra help to learn and grow.

Do you have questions that you'd like to have answers for?

Would you like to have our staff provide a free screening of your infant or toddler in your home?

This service is available to you! Please call 507-831-6940, ext. 614 and ask for Victoria Patterson, the Infant/Toddler Early Intervention teacher. You may also make a referral to Minnesota's "Help Me Grow" program.

SCHOOL PICTURES

ELEMENTARY SCHOOL PICTURES WILL BE TAKEN AT ENTRANCE CONFERENCES.

DATE: SEPTEMBER 2 & 3
LOCATION: ELEMENTARY GYM.
TIME: PLEASE HAVE YOUR CHILD'S PICTURE TAKEN BEFORE YOUR CONFERENCE.

PRESCHOOL STUDENTS SHOULD PLAN TO HAVE THEIR PHOTOS TAKEN AT THE ELEMENTARY SCHOOL ON ENTRANCE CONFERENCE DAYS OR AT BRIDGES PRESCHOOL ON SEPTEMBER 4 BETWEEN 10:00 AM - 1:00 PM

Is your toddler on track?

Learn more and make sure.
HelpMeGrowMN.org

help me
GRW

Bussing Information



Palmer Bus Service is proud to serve Windom Area Schools Transportation needs for the 2025-2026 school year. We have been busy getting ready, and would like to convey the following items:

1. If you are new to the district, and have not enrolled your students, please do so, so that we can get accurate routes finished by Mid August.
2. If you have moved during the summer, please let me know, so that routes can be accurate by Mid August.
3. If you do move during the year, please let me know ahead of time, so that changes can be made in the route, and I can give you proper information. Also, please notify the school, so that your address and transportation code can be updated in the system.
4. To start the school year, please be at your bus stop at least 5 minutes early, as the times can change due to various things, and after the first couple of weeks the time at the stop will be set, and might not be what was stated before the start of school.
5. To start the year the bus may be

up to 10 minutes late after school, as we try to make sure that everyone is on the correct bus, and gets to their correct stop. After the first week, the times will be close to what was stated before the start of school

6. There are times when the bus may be late due to weather, or mechanical problems. If the bus is more than ten minutes late, please call to see what is happening.

7. Palmer Bus Service and Windom Area Schools rolled out a Stop Finder App, so that you can be notified when the bus is getting close to your students stop. This is great so that you know when the bus will be arriving, and you can also see where it is on the route. This will help during inclement weather, so your student does not have to wait outside very long, and also if the bus is either earlier or later than normal, you know where the bus is, and can have your students ready on time. There are some things that we learned about sending this app out for you to use. Notification is only sent out to the email address of the person that is listed first in the parent portal. If you are not the first one listed, but want to have the app, the first person listed needs to invite you to get it. I am hoping to get the new invitation sent out about a week before school starts, so please make sure that the email address is listed, and correct.

8. Palmer Bus Service is in need of Bus Drivers. We have availability for Route Drivers, whether Morning and/or Afternoon, sub drivers, or trip drivers. There is no experience needed as Palmer Bus Service will help you every step of the way to becoming a Bus Driver. We also offer paid training. This is a great opportunity for a parent who is looking for a job while your students are in school, as you only drive when there is school, and you can bring your kids with you on the bus. If you have a student that is in sports, you can transport them to their activities, and get paid to see them play. This is also great for coaches who can get paid to drive their team to the activities, and get paid while coaching. It is also a great second income job. Routes are no more than 1 ½ hours to 2 hours long. If you are interested please contact Kevin at 831-6924.

We look forward to transporting your student(s) this school year, and if you have any questions, do not hesitate giving me a call.

Kevin Heggeseth
Site Manager
Palmer Bus of Windom



Kevin Heggeseth
Site Manager,
Palmer Bus of Windom
507.831.6924

Important Reminders from the Health Office



Get Ready for the First Day of School!

Books and backpacks are important—but so is a healthy start! Make health readiness part of your back-to-school checklist. To help ensure a safe and successful school year, please make sure your student's health information is current and on file before the first day of school.

What to Submit

Please ensure the school has updated information for your child, including:

- Updated Emergency Contacts** — Students may only be released to listed individuals if sick
- Immunization Records or Completed Exemption Form**
- Medication Authorization Forms** (signed by both parent/guardian and physician)
- Asthma Action Plan** (for students with inhalers)
- Allergy Action Plan** (for students prescribed an EpiPen)
- Consent to Carry/Self Administer** (inhalers or EpiPens)
- Seizure Action Plan** (for students with seizure diagnosis)
- Diabetes Medical Management Plan** (for students with diabetes)

These forms must be updated **annually** or whenever your child's health needs change.

Immunizations

Minnesota law requires all students to be up to date on immunizations or have a completed exemption form on file.

Additional requirements apply for students entering Kindergarten, 7th Grade, & 12th Grade

Students who do not meet immunization requirements may be excluded from school.

View state requirements by scanning the QR Code:



Medications at School

Prescription Medications

- Must be in the original labeled bottle
- Require a completed Medication Administration Form signed by both physician and parent
- Pharmacy can provide a second labeled bottle upon request

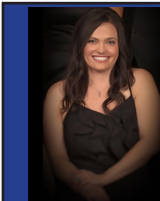
Over-the-Counter Medications

- Grades K-5:** Must be kept and administered in the health office
- Grades 6-12:** May carry & self-administer ibuprofen or acetaminophen with signed parent/guardian consent and student agreement on file – required annually.

All Health Office forms are available on the Windom Area Schools Website under Health Office or scan this QR code:



Let's work together to keep your child healthy, safe, and ready to learn!



Jessica Matt
District School Nurse
jmatt@isd177.com
507.831.6910 ext. 122



Jacki Larson
Elementary School Nurse
jlarson@isd177.com
507.831.6925 ext. 442

School Food Service Information

Common Questions, Prices, and More!

Welcome back to the new 2025-2026 school year! Windom Area Schools will be joining Minnesota's Free School Meals Program for all students to receive one breakfast and one lunch free of charge each day of school. We will continue to operate under the School Breakfast Program and National School Lunch Program, following their guidelines for healthy school meals as well as following USDA requirements. Thank you for giving us the opportunity to provide your child with delicious and nutritious meals and supporting Windom Public Schools' Food Services.

We Need You! Every year your family is asked to fill out an Applications for Educational Benefits to determine if your family qualifies for free or reduced meal status. Although no application is required to receive free meals, filling out the Application for Educational Benefits is still important! Your child(ren) may qualify for other benefits like reduced fees at school. Your application may also help the school qualify for education funds, discounts, books, school programs and other meal programs. The application is easy to fill out, easy to understand and must be filled out every year. Applications in English and Spanish languages are available on the school's website under the Family tab, Food Service and click on Free & Reduced Applications OR at each school's office. Online applications are also available in the Parent Portal on Infinite Campus. Applications can be made available in other languages as requested by a parent or guardian. Please see the new Application for Educational Benefits and instructions in this newsletter. If you have received a letter for Direct Certification, you do not need to fill out an application.

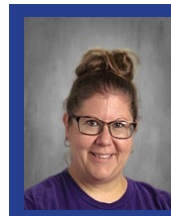
Eat Breakfast at School! Mornings can be hectic...the alarm doesn't go off...the kids don't want to get up...there's no time to eat breakfast before the bus comes... or they're just not ready to eat. Or maybe your teenager grabs a can of soda and a candy bar on the way to school. If this sounds like your house, we have good news for you. Breakfast is served at school for free! School breakfast will energize your child's day and provide them with a healthy start. A nutritious breakfast helps students be more alert so they can learn more in class and have plenty of vitamins and nutrients for a strong and healthy body. School breakfast is a convenient option—let us do the preparation, serving, and clean up! Breakfast is served every weekday morning from 7:30 AM-8:10 AM in the cafeteria of each school. We look forward to seeing your child at breakfast.

Say YES! To School Lunch Windom Schools' serve a variety of foods for lunch and expose the students to new foods with a variety of hot and cold food and fruits and vegetables. Since we participate in the National School Lunch Program, guidelines must be followed. 5 food groups are offered to make a complete meal. Grains, Protein, Fruits, Vegetables, Milk. Students in Preschool-4th grade are given all these food groups for lunch daily to encourage trying new foods as they establish their food preferences. Grades 5th-12th are offered the 5 food components, but must take at least 3 of the food groups, with one being fruit or vegetable, to create a reimbursable meal. School Lunch is where it's at!

The daily and weekly menus are posted on the school's website under the Dining tab OR for printable monthly menus, go to the Family tab, then Food Services tab/Printable Menus. Select the school you wish to see menus for from My School Menus.

Milk break pricing: Milk break is provided as an optional snack for grades 1-3. Kindergarten milk breaks are free. If online payments are intended for milk break payments, the parent needs to notify food service departments at Windom Area Elementary for a deduction of the milk break charge to be made from the family lunch account funds. **The yearly milk break costs \$80, or each quarter of milk break is \$20.** Please check your family lunch account balance that may be used toward any milk break fees before making your yearly payment.

The Special Diet Statement form for food substitutions related to food intolerances or food allergies for students is located at the Family and Food Service/ Food Service Documentation on the Windom Schools website. Reasonable substitutions for meals or snacks will be made on a case-by-case basis for participants who are considered to have a disability that restricts their diet. Please fill out the form each year for updating the student's diet changes, sending the form to Food Services or Nursing Services or contact Mandie Borer, FSD with diet updates. If your child requires a fluid milk substitution, a written and signed request from a guardian or medical authority that includes the reason for the substitution must be provided for your child to receive a fluid milk substitute. Soy milk and lactose free milk will be provided as an allowed substitute.



Mandie Borer
Food Service Director
mborer@isd177.com
507-831-6910 ext. 325

School Meals Policy #534 The purpose of this policy is to ensure that students receive healthy and nutritious meals through the school district's nutrition program and that school district employees, families and students have a shared understanding of expectations regarding meal charges. Sufficient funds must be in the student's food service account to cover all Ala Carte items including extra meal entrees, extra milk, or milk only, extra juice, or juice only, or other items not included in a reimbursable meal such as Smart Snack items. If a student brings a home lunch and wants a milk carton from the school, there will be a charge of **50 cents** for the milk since it is not part of the school's reimbursable meal. A complete second breakfast meal and a complete second lunch meal will be the charge of an adult breakfast and adult lunch charge which are set at the beginning of the school year.

The Wellness Policy # 533 is followed to promote a healthier day with good nutrition and physical activities for the students at Windom Public Schools. Please notify our school office if you desire to assist with school wellness for the students at W.A.S. Please find the policy at the Family and Food Service tabs under Food Service documentation on the school website.

The **Triennial Assessment** was completed in 2020 for Wellness Policy goals to strive for. This is posted on the school's website under the Food Service Tab and Food Service Documentation for review.

Windom Area Schools is an equal opportunity provider, employer, and lender



SUMMERFOODSERVICE PROGRAM 2025

Summer meals are available to ages 18 and under & for students over 18 with disabilities at no cost. To eat, just show up!

TWO LOCATIONS
WINDOM AREA ELEMENTARY SCHOOL CAFETERIA
1200 17TH STREET AT WINDOM, MN
HIGHLAND EARLY CHILDHOOD CENTER CAFETERIA
68 10TH STREET, WINDOM, MN

TIME: 11:30 A.M. TO 12:30 P.M.

Meals have to be consumed at the school site cafeterias.
Accompanying adult lunch is \$6.
Windom Schools is an equal opportunity provider.

STARTING JUNE 9 - AUGUST 15
NO MEALS JUNE 19, JULY 4, AUGUST 12



Windom Area Schools

District Office
PO Box 177
Windom, MN 56101

Phone: 507-831-6901
Fax: 507-831-6919

Windom Area
Middle/High School

Phone: 507-831-6910
Fax: 507-831-6919

Windom Area
Elementary

Phone: 507-831-6925
Fax: 507-831-6919

www.windom.k12.mn.us

Dear Parent/Guardian:

Our school offers healthy meals each day. All students can get one breakfast and one lunch free of charge each day at school. Although no application is required to receive this free meal benefit, filling out the Application for Educational Benefits is still important! Your application may help the school qualify for education funds.

To apply, complete the enclosed Application for Educational Benefits and return it to:

Mandie Borer, FSD Windom Area School, P.O. Box 177 Windom, MN 56101

Who should complete this application? Children in households participating in the Supplemental Nutrition Assistance Program (SNAP), Minnesota Family Investment Program (MFIP) or Food Distribution Program on Indian Reservations (FDIR), and foster, homeless, migrant and runaway children qualify without reporting household income. Alternatively, children can qualify if their household income is within the maximum income shown for their household size on the instructions.

COMMON QUESTIONS:

I get WIC or Medical Assistance. Can my children qualify? Children in households participating in WIC or Medical Assistance do not automatically qualify. Children may be eligible depending on other household financial information. Please fill out an application.

Who should I include as household members? Include yourself and all other people living in the household, related or not (such as grandparents, other relatives, or friends).

May I apply if someone in my household is not a U.S. citizen? Yes. You or your children do not have to be U.S. citizens for you to complete an application.

What if my income is not always the same? List the amount that you normally get. If you normally get overtime, include it, but not if you get overtime only sometimes. For seasonal work, write in the total annual income.

Will the income information or case number I give be checked? It may be. We may also ask you to send written proof.

How will the information be kept? Information you provide on the form, and your child's approval, will be protected as private data. For more information, see the back page of the Application for Educational Benefits.

If I don't qualify now, may I apply later? Yes. Please complete an application at any time if your income goes down, your household size goes up, or you start getting SNAP, MFIP or FDIR benefits.

If you have other questions or need help, call 507-831-6910 Ext. 325

Sincerely,

Mandie Borer, Food Service Director

How to Complete the Application for Educational Benefits

Complete the Application for Educational Benefits form for school year 2025–26 if any of the following applies to your household:

- Any household member currently participates in the Minnesota Family Investment Program (MFIP), the Supplemental Nutrition Assistance Program (SNAP), or the Food Distribution Program on Indian Reservations (FDPIR) or
- The household includes one or more foster children (a welfare agency or court has legal responsibility for the child) or
- The total income of household members is within the guidelines shown below (**gross earnings before deductions**, not take-home pay). Do not include as income: foster care payments, federal education benefits, MFIP payments, or value of assistance received from SNAP, WIC, or FDPIR. Military: Do not include combat pay or assistance from the Military Privatized Housing Initiative. The income guidelines are effective from July 1, 2025 through June 30, 2026.

Maximum Total Income

Household size	\$ Per Year	\$ Per Month	\$ Twice Per Month	\$ Per 2 Weeks	\$ Per Week
1	28,953	2,413	1,207	1,114	557
2	39,128	3,261	1,631	1,505	753
3	49,303	4,109	2,055	1,897	949
4	59,478	4,957	2,479	2,288	1,144
5	69,653	5,805	2,903	2,679	1,340
6	79,828	6,653	3,327	3,071	1,536
7	90,003	7,501	3,751	3,462	1,731
8	100,178	8,349	4,175	3,853	1,927
Add for each additional person	10,175	848	424	392	196

Step 1: Children

List all infants and children in the household, their school and grade if applicable, and birthdate. Attach an additional page if needed to list all children. Check the box if a child is in foster care (a welfare agency or court has legal responsibility for the child).

Step 2: Case Number

If any household member currently participates in SNAP, MFIP or FDPIR, write in the case number and then go to Step 4. If you do not participate in any of these programs, leave Step 2 blank and continue to Step 3.

Step 3: Adult and Child Incomes / Last 4 Digits of Social Security Number

- **Social Security Number/Total Household Members.** An adult household member must provide the last four digits of their Social Security number or check the box if they do not have a Social Security number. Report the total number of household members and ensure all household members are listed individually on the application in the child or adult section as applicable.
- **Child Income.** If any children in the household have regular income, such as SSI or part-time jobs, list the total amount of regular incomes received by all children, and check the box for the frequency: weekly, bi-weekly, twice a month, or monthly. Do not include occasional earnings like babysitting or lawn mowing.
- **Adult income.** Report the names of adult household members and income in this section.
 - List all adults living in the household not listed in Step 1, whether related or not, such as grandparents, relatives, or friends.
 - **Gross Earnings from Work.** This is usually the money received from working at jobs where a paycheck is received. For each income, check the box to show how often the income is received: weekly, bi-weekly, twice per month, or monthly.
 - List gross incomes before deductions, not take-home pay. Do not list an hourly wage rate. For adults with no income to report, enter a '0' or leave the section blank. For seasonal work, write in the total annual income.
 - **Are you Self-Employed or a Farmer?** List the net income per month or year after business expenses. Do not list the same income twice on the application. A loss from farm or self-employment must be listed as 0 income and does not reduce other income.
 - **Any Other Gross Income.** List gross incomes before deductions from all other sources, such as SSI, unemployment, child support, public assistance, social security, rental income or annuities.

Step 4: Signature and Contact Information An adult household member must sign the form. If you do not want your information to be shared with Minnesota Health Care Programs, check the “Don’t share” box in Step 4.

Optional: Please provide the information on ethnicity and race that is requested on the second page of the form. This information is not required and does not affect eligibility. The information helps to ensure we are meeting civil rights requirements and fully serving our community.

2025-26 Application for Educational Benefits

Mail or return completed form to: Windom Area Schools

STEP 1: List ALL Household Members who are infants, children, and students up to and including grade 12 (if more spaces are required for additional names, attach another sheet of paper).

Definition: A Household Member is "Anyone living with you and shares income and expenses, even if not related." Read *How to Complete the Application for Educational Benefits* for more information. Adults over grade 12 living in the same household should be reported in Step 3. If children in the household attend different districts or charter/nonpublic schools, return an application at each one.

Child's First Name (list all children in household)	MI	Child's Last Name	School	Grade	Birthdate	Foster Child (v)
						<input type="checkbox"/>
						<input type="checkbox"/>
						<input type="checkbox"/>
						<input type="checkbox"/>
						<input type="checkbox"/>

STEP 2: Do Any Household Members (including you) currently participate in one or more of the following assistance programs: SNAP, MFIP or FDIPIR? Medical assistance **does not** qualify. **if NO >** Go to STEP 3. **if YES >** Enter SNAP, MFIP or FDIPIR Case Number (between 4-9 digits, do not report EBT card number) _____ then go to STEP 4 (Do not complete STEP 3)

STEP 3: Report Income for ALL Household Members (Skip this step if you answered 'Yes' to STEP 2)

A. Last Four Digits of Social Security Number (SSN) of Adult Household Member: XXX-XX- Or Check if Adult has No SSN: Total Number of All Household Members (Children + Adults)

B. Child Income: _____

Sometimes children in the household earn or receive income, such as from a part time job or SSI. Please include the TOTAL income received by all children listed in STEP 1. Do not include income received by adults in the box to the right.

Total Income Received by All Children	Weekly	Bi-weekly	2x Month	Monthly
\$ _____	<input type="checkbox"/>	<input type="checkbox"/>	<input type="checkbox"/>	<input type="checkbox"/>

C. All Adult Household Members (including yourself). For each Household Member listed, if they do receive income, report total gross income only. If they do not receive income from any source, write '0' or leave any fields blank. You are certifying (promising) that there is no income to report. Not sure what income to include here? Flip the page and review "Sources of Income" for information. "Sources of Income" will help you with the Child Income section and All Adult Household Members section.

Names of All Adult Household Members (First and Last)	Gross Earnings from Working at Jobs				Are you Self-Employed or a Farmer?				Any Other Gross Income				
	Report income before deductions or taxes in whole dollars (no cents).		Net income from Farm or Self-Employment. Do not duplicate elsewhere.		SSJ, Unemployment, Public Assistance, Child Support, and others on Page 2								
	Weekly	2x Month	Monthly	Yearly	Monthly	2x Month	Bi-weekly	Weekly	Monthly	2x Month	Bi-weekly	Weekly	
	<input type="checkbox"/>	<input type="checkbox"/>	<input type="checkbox"/>	<input type="checkbox"/>	<input type="checkbox"/>	<input type="checkbox"/>	<input type="checkbox"/>	<input type="checkbox"/>	<input type="checkbox"/>	<input type="checkbox"/>	<input type="checkbox"/>	<input type="checkbox"/>	<input type="checkbox"/>
	<input type="checkbox"/>	<input type="checkbox"/>	<input type="checkbox"/>	<input type="checkbox"/>	<input type="checkbox"/>	<input type="checkbox"/>	<input type="checkbox"/>	<input type="checkbox"/>	<input type="checkbox"/>	<input type="checkbox"/>	<input type="checkbox"/>	<input type="checkbox"/>	<input type="checkbox"/>
	<input type="checkbox"/>	<input type="checkbox"/>	<input type="checkbox"/>	<input type="checkbox"/>	<input type="checkbox"/>	<input type="checkbox"/>	<input type="checkbox"/>	<input type="checkbox"/>	<input type="checkbox"/>	<input type="checkbox"/>	<input type="checkbox"/>	<input type="checkbox"/>	<input type="checkbox"/>
	<input type="checkbox"/>	<input type="checkbox"/>	<input type="checkbox"/>	<input type="checkbox"/>	<input type="checkbox"/>	<input type="checkbox"/>	<input type="checkbox"/>	<input type="checkbox"/>	<input type="checkbox"/>	<input type="checkbox"/>	<input type="checkbox"/>	<input type="checkbox"/>	<input type="checkbox"/>

STEP 4: Contact information and adult signature. "I certify (promise) that all information on this application is true and that all income is reported. I understand that this information is given in connection with the receipt of Federal funds, and that school officials may verify (check) the information. I am aware that if I purposely give false information I may be prosecuted under applicable State and Federal laws."

I have checked this box if I do not want my information shared with Minnesota Health Care Program as allowed by state law.

Printed name of adult signing form _____ Daytime Phone _____

Address (if available) _____ Apt# _____ City _____ Zip _____

SIGN HERE: Signature of Household Adult _____ Date _____

Do Not Fill Out: For School Office Use Conversions to Annualize All Income:	X1	Annualize	X12	Monthly	X24	2x Month	X26	Bi-weekly	X52	Weekly
	<input type="checkbox"/> Verified? Attach Tracker	<input type="checkbox"/> Free After Verified	<input type="checkbox"/> Reduced After Verified	<input type="checkbox"/> Denied After Verified	<input type="checkbox"/> No change	<input type="checkbox"/> Categorical Eligibility	<input type="checkbox"/> Free	<input type="checkbox"/> Reduced	<input type="checkbox"/> Household Size:	<input type="checkbox"/> Date:
All Total Income (Include child and adult income)										
\$ _____										
Determining Official Signature: _____ Date: _____										
Confirming Official Signature: _____ Date: _____										

OPTIONAL: Children's Racial and Ethnic Identities

We are required to ask for information about your children's race and ethnicity. This information is important and helps to make sure we are fully serving our community. Responding to this section is optional and does not affect your children's eligibility. Respond to both Step One, *Ethnicity* and Step Two, *Race*.

Step One: Ethnicity (check one): Hispanic or Latino Not Hispanic or Latino

Step Two: Race (check one or more): American Indian or Alaskan Native Asian Black or African American Native Hawaiian or Other Pacific Islander White

INSTRUCTIONS: Sources of Income

Sources of Income for Children

Sources of Child Income	Examples
<ul style="list-style-type: none"> Earnings from work Social Security <ol style="list-style-type: none"> Disability payments Survivor's benefits Income from person outside the household Income from any other source 	<ul style="list-style-type: none"> A child has a regular full or part-time job where they earn a salary or wages A child is blind or disabled and receives Social Security A parent is disabled, retired, or deceased, and their child receives Social Security benefits A friend or extended family member regularly gives a child spending money A child receives regular income from a private pension fund, annuity, or trust

Sources of Income for Adults

Earnings from Work	Public Assistance / Alimony / Child Support	All Other Income
<ul style="list-style-type: none"> Salary, wages, cash bonuses (before deductions or taxes) Net income from self-employment (farm or business) If you are in the U.S. Military: <ol style="list-style-type: none"> Basic pay and cash bonuses (do NOT include combat pay, FSSA or privatized housing allowances) Allowances for off-base housing, food and clothing 	<ul style="list-style-type: none"> Cash Assistance from State or local government Supplemental Security Income Unemployment benefits Worker's compensation Alimony payments Child support payments Veteran's benefits Strike benefits 	<ul style="list-style-type: none"> Social Security Disability benefits Regular income from trusts or estates Annuities Investment income Rental income Regular cash payments from outside household

The Richard B. Russell National School Lunch Act requires that we use information from this application to see who qualifies for free or reduced price meals. We can only approve complete forms. We may share your eligibility information with education, health, and nutrition programs to help them deliver program benefits to your household. Inspectors and law enforcement may also use your information to make sure that program rules are met. Please be sure to provide the last four numbers of the Social Security number of the adult household member who signs the application. If the adult does not have one, 'Check if no Social Security Number.' Applications for a foster child do not need to list a Social Security number. Applications for children in households receiving Supplemental Nutrition Assistance Program (SNAP) or Temporary Assistance for Needy Families (TANF) or Food Distribution Program on Indian Reservations (FDPIR) do not need to list a Social Security number. Some children qualify for free meals without an application. Please contact your school to get free meals for a foster child, and children who are homeless, migrant, or runaway.

At public school districts and charter schools, each student's eligibility status also is recorded on a statewide computer system used to report student data to MDE as required by state law.

Nondiscrimination statement: In accordance with federal civil rights law and U.S. Department of Agriculture (USDA) civil rights regulations and policies, this institution is prohibited from discriminating on the basis of race, color, national origin, sex (including gender identity and sexual orientation), disability, age, or reprisal or retaliation for prior civil rights activity.

Program information may be made available in languages other than English. Persons with disabilities who require alternative means of communication to obtain program information (e.g., Braille, large print, audiotape, American Sign Language), should contact the responsible state or local agency that administers the program or USDA's TARGET Center at (202) 720-2600 (voice and TTY) or contact USDA through the Federal Relay Service at (800) 877-8339.

To file a program discrimination complaint, a Complainant should complete a Form AD-3027, USDA Program Discrimination Complaint Form which can be obtained online at: <https://www.usda.gov/sites/default/files/documents/ad-3027.pdf>, from any USDA office, by calling (866) 632-9992, or by writing a letter addressed to USDA. The letter must contain the complainant's name, address, telephone number, and a written description of the alleged discriminatory action in sufficient detail to inform the Assistant Secretary for Civil Rights (ASCR) about the nature and date of an alleged civil rights violation. The completed AD-3027 form or letter must be submitted to USDA by: (1) **mail:** U.S. Department of Agriculture, Office of the Assistant Secretary for Civil Rights, 1400 Independence Avenue, SW, Washington, D.C. 20250-9410; or (2) **fax:** (833) 256-1665 or (202) 690-7442; or (3) **email:** program.intake@usda.gov

This institution is an equal opportunity provider.

July '25

S	M	T	W	T	F	S
		1	2	3	4	5
6	7	8	9	10	11	12
13	14	15	16	17	18	19
20	21	22	23	24	25	26
27	28	29	30	31		

August '25

S	M	T	W	T	F	S
		3	4	5	6	7
8	9	10	11	12	13	14
15	16	17	18	19	20	21
22	23	24	25	26	27	28
29	30	31				

September '25

S	M	T	W	T	F	S
		1	2	3	4	5
6	7	8	9	10	11	12
13	14	15	16	17	18	19
20	21	22	23	24	25	26
27	28	29	30			

October '25

S	M	T	W	T	F	S
			1	2	3	4
5	6	7	8	9	10	11
12	13	14	15	16	17	18
19	20	21	22	23	24	25
26	27	28	29	30	31	

November '25

S	M	T	W	T	F	S
				6	7	8
9	10	11	12	13	14	15
16	17	18	19	20	21	22
23	24	25	26	27	28	29
30						

December '25

S	M	T	W	T	F	S
		1	2	3	4	5
6	7	8	9	10	11	12
13	14	15	16	17	18	19
20	21	22	23	24	25	26
27	28	29	30	31		

January '26

S	M	T	W	T	F	S
				1	2	3
4	5	6	7	8	9	10
11	12	13	14	15	16	17
18	19	20	21	22	23	24
25	26	27	28	29	30	31

February '26

S	M	T	W	T	F	S
		1	2	3	4	5
6	7	8	9	10	11	12
13	14	15	16	17	18	19
20	21	22	23	24	25	26
27	28	29	30			

March '26

S	M	T	W	T	F	S
		1	2	3	4	5
6	7	8	9	10	11	12
13	14	15	16	17	18	19
20	21	22	23	24	25	26
27	28	29	30	31		

April '26

S	M	T	W	T	F	S
			1	2	3	4
5	6	7	8	9	10	11
12	13	14	15	16	17	18
19	20	21	22	23	24	25
26	27	28	29	30		

May '26

S	M	T	W	T	F	S
					1	2
3	4	5	6	7	8	9
10	11	12	13	14	15	16
17	18	19	20	21	22	23
24	25	26	27	28	29	30
31						

June '26

S	M	T	W	T	F	S
			1	2	3	4
5	6	7	8	9	10	11
12	13	14	15	16	17	18
19	20	21	22	23	24	25
26	27	28	29	30		

Calendar is subject to change by administration with board approval.

* 1st Draft January 26 for 2025 board review
* For approval at the February 10 meeting

Quarter End Dates

October 31	1st	41
January 16, 2026	2nd	42
March 20, 2026	3rd	43
May 28, 2024	4th	46
		172

Notations for Above Calendar Days

- July 22 - New Teacher Boot Camp
- Aug. 21 - New Teacher Inservice
- Aug. 25-29 Staff Development (All Staff)
- Sept. 2 - 1st day of school for grades 5-12
- Sept. 4 - 1st day of school for grades K-4
- Oct. 15-Staff Development
- Oct. 16-17 - MEA Fall Break
- Oct. 31 - Last day of Quarter 1 - Early Release at 12:30 for Elem & 12:35 for MSHS, Prof Dev for teachers
- Nov. 6 - Parent Teacher Conf. 3:30 - 8:30
- Nov. 7 - Parent Teacher Conf. 7:45 - 3:45 - No School
- Nov. 27-28 - No School Thanksgiving Break
- Dec. 22 - Jan. 2 - NO SCHOOL Winter Break
- Jan. 16 - End of Quarter- Early Release at 12:30 for Elem & 12:35 for MSHS, Prof Dev for teachers
- Jan. 19 - MLK Staff Development NO SCHOOL
- Feb. 16 - President's Day - NO SCHOOL (potential make up day for weather)
- Mar. 20 - Last day of Quarter 3 - Early Release at 12:30 for Elem & 12:35 for MSHS, Prof Dev
- Mar. 26 - Parent Teacher Conf. 3:30 - 8:30
- April 3-5 - NO SCHOOL Spring Break
- April 6 - Staff Development Day
- May 22 - GRADUATION 7pm
- May 25 - NO SCHOOL Memorial Day
- May 28 - Last Day of School - Half Day Early out (k-5 @ 12:30 & 6-12 12:35), Prof Dev for teachers
- May 29 - INSERVICEWORK DAYS - NO SCHOOL

5 EARNING DAYS - Pre-K, Elementary, and Middle School Students- check binders for work. High School HS- log into Infinite Campus
Inclimate Weather Days
Snow Make Up Day - February 16

Student	Days	Inservice	Work Days	P/T Conf.
August	0	5	5	0
September	21			
October	20	1		
November	17			2
December	15	0		
January	19	1		
February	19	0		
March	22	0		1
April	20	1		
May	19	1		
June	0	0		
Totals	172	9	9	3

- NEW TEACHER In-Service and BOOT CAMP
- INSERVICE/WORK DAYS - NO SCHOOL
- First Day of School
- School Breaks - NO SCHOOL
- Night Parent Teacher Conferences
- Day Parent Teacher Conf. - NO SCHOOL
- Last day of Quarter/Semester
- Half Day Early Out (k-5 @ 12:30 & 6-12 12:35)

Wednesdays Early Out- Elementary 2:30 & MSHS 2:35

Notice to Parents/Guardians of Students Receiving Special Education Services

New federal regulations effective February 1, 2013 require the school district to provide you with the Written Annual Notice Relating to Third Party Billing for IEP Health-related Services as part of the Notice of Procedural Safeguard and Parental Rights, prior to your applying for MHCP benefits.

PART B - NOTICE OF PROCEDURAL SAFEGUARDS

Regarding HEALTH-RELATED SERVICES

Before billing Medical Assistance or MinnesotaCare for health-related services the first time, and each year, the district must inform you in writing that:

1. The district will share data related to your child and health-related services on your child's IEP with the Minnesota Department of Human Services to determine if your child is covered by Medical Assistance or MinnesotaCare and whether those services may be billed to Medical Assistance or MinnesotaCare.
2. Before billing Medical Assistance or MinnesotaCare for health-related services the first time, the district must obtain your consent, including specifying the personally identifiable information that may be disclosed (e.g., records or information about the services that may be provided), the purpose of the disclosure, the agency to which the disclosure may be made (i.e., the Department of Human Services) and which specifies that you understand and agree that the school district may access your (or your child's) public benefits or insurance to pay for health-related services.
3. The district will bill Medical Assistance or MinnesotaCare for the health-related services on your child's IEP.
4. The district may not require you to sign up for or enroll in Medical Assistance or MinnesotaCare or other insurance programs in order for your child to receive special education services.
5. The district may not require you to incur an out-of-pocket expense such as the payment of a deductible or co-pay amount incurred in filing a claim for health services provided, but may pay the cost that you otherwise would be required to pay.
6. The district may not use your child's benefits under Medical Assistance or MinnesotaCare if that use would: decrease available lifetime coverage or any other insured benefit; result in your family paying for services that would otherwise be covered by the public benefits or insurance program and that are required for the child outside of the time your child is in school; increase your premiums or lead to the discontinuation of benefits or

insurance; or risk your loss of eligibility for home and community-based waivers, based on aggregate health-related expenditures.

7. You have the right to receive a copy of education records the district shares with any third party when seeking reimbursement for IEP health-related services.

You have the right to stop your consent for disclosure of your child's education records to a third party, including the Department of Human Services, at any time. If you stop consent, the district may no longer share your child's education records to bill a third party for IEP health-related services. You can withdraw your consent at any time, and your child's IEP services will not change or stop.

This is your annual notification that the Windom Public School District will be billing Medical Assistance/Minnesota Care directly if you have provided consent and have not revoked or denied in writing that consent.

Rev. August 2014

Written Annual Notice Related to Third Party Billing for IFSP Health Related Services

Under Part C of IDEA, the following early intervention services are provided at no cost to families:

- Child Find services;
- Evaluations and assessments;
- The development and review of the Individual Family Service Plan (IFSP);
- Service coordination; and
- Procedural safeguards

As residents of a Birth Mandate state, Minnesota infants and toddlers also receive free appropriate public education (FAPE) services at no cost to the family.

Notice and Consent for Third Party Billing

Although Part C early intervention services for your child are provided at no cost to you, early childhood programs are required to ask for reimbursement from public and private insurance for health-related services included in your child's IFSP. Before billing Medical Assistance (MA) or MinnesotaCare for IFSP health related services, the early intervention program must provide you with written notification including:

1. Parental consent must be obtained to share information with the Minnesota Department of Human Services (DHS), the agency that administers MA and MinnesotaCare, for billing purposes and before disclosing your child's personally identifiable information. This consent is only required one time and the early childhood program may not

use your child's benefits under MA or MinnesotaCare is that use would result in:

- a. Decreased available lifetime coverage;
 - b. You paying for services otherwise covered by your public or insurance program;
 - c. Increase in premiums or discontinuation of public benefits; or
 - d. Risk loss of eligibility for your child or your family for home and community-based waivers.
2. The early childhood program may not require you to sign up for or enroll in MA or MinnesotaCare or any other insurance program in order for your child to receive the health-related services in your child's IFSP;
 3. Your public insurance benefits will not be affected if used for IFSP health-related services;
 4. Consent is required when private health insurance is billed initially and whenever the IFSP is revised due to increase (in frequency, length, duration or intensity) in the provision of services in your child's IFSP;
 5. The Early Childhood program cannot require the use of private insurance to pay for Part C services if there is any cost to the family, including co-pays, deductibles, increased premiums or effects on service limits and prior authorization;
 6. If private insurance is used and you are charged out of pocket expenses by your insurer, the school district may pay or reimburse co-payments, deductibles or other insurance related costs in connection with health related services in your child's IFSP and may use Federal IDEA Part C or other funds to pay for these costs;
 7. If you have private insurance coverage, the early childhood program will seek a denial from your private insurance before public insurance or benefits are used to pay for early childhood services. Services will still be provided if your private insurance denies coverage for any reason; and,
 8. You may withdraw your consent at any time, in writing, to disclose personally identifiable information and services in your child's IFSP will still be provided.

Dispute Resolution Options

Federal law states that if there are issues related to the state's system of payments, you may do one of the following: participate in mediation, request a due process hearing, file a State complaint, or use any other procedure established by the State for speedy resolution of financial claims.

2025-26 Annual Facility Notifications

2025-2026 Asbestos Annual Notification

All public and non-public schools are required by Federal regulations to annually notify all parents and employees about the school district's asbestos program activities. Doug Holtz, Windom Area School's Asbestos Program Manager, is pleased to inform the public that the school district has continued to respond to the asbestos in school buildings issue in a cautious and proactive manner. Beginning on July 9, 1989, an asbestos management plan has been available in each building for public review during normal business hours. Plans may be reviewed at the Windom School District Office.

Completed Asbestos Activities: 2024-2025 (July 1- June 30)

Districtwide: Periodic Inspections

The school district assures all residents that ongoing efforts related to the management and control of asbestos are geared singularly toward providing a safe and healthy environment for students, staff, and visitors. The school district utilizes the services of the Institute for Environmental Assessment in providing ongoing services as required by law.

Any questions regarding asbestos or indoor air quality in the Windom Area Schools can be directed to the Maintenance Director at (507) 822-0708.

2025-2026 Use of Pesticides Annual Notification

All Minnesota schools are required to inform parents/guardians and school employees that they may request to be notified prior to pesticide applications on school property. Pesticides include chemicals which are used to control insects, weeds, rodents, or other pests as defined by law (MS 123B,575 Subd. 9)

Our district utilizes a licensed, professional pest control service, on an as needed basis, for the prevention and control of rodents, insects, and other pests in and around the district's buildings. Windom Area School staff also apply chemicals for weed control. The

pesticide management program is designed to minimize the risk to human health and the environment and consists of:

Inspection and monitoring to determine whether pests are present and whether any treatment is needed; Recommendations for maintenance and sanitation to help eliminate pests without the use of pesticides; Utilization of non-chemical measures, such as traps, caulking or screening; and application of EPA registration materials as needed.

Pests sting, bite, contaminate, damage property, and spread disease; therefore, we must prevent and control them. Because the long-term health effects on children from the application of certain pest control measures may not be fully understood, we've implemented this program to control pests using the least pesticides and least toxic pesticides possible. All pest control materials are chosen and applied according to label direction per Federal Law. An estimated schedule is available for applications to school grounds of herbicides and other materials. Parents may receive, at their expense, notification of herbicide application prior to their use should they be deemed necessary on unscheduled days or specifically requested. To be notified about pesticide applications, please contact the Maintenance Director at (507) 822-0708.

2025-2026 Indoor Air Quality (IAQ) Annual Notification

Windom Area Schools ISD #177 in coordination with the Minnesota Department of Education (MDE) and the Environmental Protection Agency (EPA) have developed an indoor air quality management plan. A factor of the IAQ management plan is the following yearly correspondence to all district residents on the status of IAQ issues within the district.

Formal approval of the IAQ Management Plan by the ISD #177 School Board was conducted. Since that time IAQ related activities have occurred on an annual basis, as recommended by the EPA and MDE such as Teacher surveys, building walkthroughs, building maintenance surveys and ventila-

tion checks.

Throughout the upcoming year ISD #177 will continue to respond to IAQ concerns in a proactive manner to ensure the health and safety of students, staff and building visitors.

ANYONE WITH QUESTIONS SHOULD CONTACT:

Doug Holtz, Maintenance Director
507-822-0708

Minnesota Department of Education
651-582-8200

2025-2026 Lead-In-Water Annual Notification

Windom Area Schools is committed to providing a safe and healthy learning and work environment for all our students and staff. In accordance with Minnesota Statute 121A.335, the Minnesota Department of Health and the Minnesota Department of Education, Windom Area Schools has implemented its Lead in Water Plan. The Plan includes a program of lead in water testing, lead hazard reduction options and communications.

Windom Area Schools performs lead in water testing in school buildings every five years. The testing reports for the school will be available on the website after the next round of testing is completed. Reports, including previous rounds of testing, are also available by contacting the Director of Buildings & Grounds. If you have any questions regarding this notice, please contact the Maintenance Director at (507) 822-0708.



Windom Educational Honor Loans

Start in 9th grade for your student's post high school education!

Windom Educational Honor Loans started in 1978 as Windom Dollars for Scholars. A group of committed individuals and groups such as the American Legion, Windom Lions, Windom Kiwanis, and others met together with the goal of raising money to help Windom High School, seniors with the cost of college. At that time many groups had their own awards which meant a senior had to complete many applications if they wanted to apply for a variety of awards. Even now there are a variety of businesses that require applicants to fill out their application to qualify for awards but in 1978

many groups agreed to support the Dollars for Scholars plan and accept a standardized application form.

From the beginning Dollars for Scholars awards were presented as Honor Loans. An Honor Loan is a no interest loan that the recipient signs a moral obligation statement that says he/she will repay at least the amount of the Honor Loan sometime after graduation of college. Repayment is made in the form of a tax-deductible donation.

In early 2014, Windom Dollars for Scholars withdrew from the National Dollars for Scholars national organization and took the name "Windom Educational Honor Loans, Inc." Awards are still made as honor loans and we are still expect students and/or parents to participate in at least four WEHL

activities during the student's 9th to 12th grades and contributions back to Windom Educational Honor Loans. Participation is encouraged starting in grade 9.

WEHL meetings are scheduled at 5:15 pm on the second Wednesday of each month school is in session, except December and May. We also have a couple fund raising activities during the year. For more information, contact Jenni Squires, WAHS Guidance Counselor or e-mail wehl@gmail.com.



Directory Information

Directory information is defined as: student and parent name(s), address(es), date of birth, attendance dates, previous school(s) attended, and information related to athletics, degrees, awards (including Honor Roll).

Such information is public and by law must be released upon request to any third party. However, a parent may request that Directory Information not be released on their child by requesting in writing that this information not be released.

A parent whose child received special education services under P.L. 94-142 may request that records be destroyed when they are no longer needed to provide educational services to their child. (NOTE: Parents or student may find that these records are needed for Social Security benefits or other purposes at a later date).

Persons having questions regarding records may contact any of the Principals or the Middle/High School Counselor.

Background Checks

It is the Windom Area Schools policy to run a criminal history background check on all new hires, substitutes, student teachers and volunteer coaches and other volunteer extracurricular advisors who provide services to our school district. This criminal history background check is done through the Bureau of Criminal Apprehension (BCA).

Notice to Parents

As a parent of a student in the Windom Area School District, under the Every Student Succeeds Act (ESSA), you have a right to know the professional qualifications of the teachers who instruct your child. ESSA gives you the right to ask for the following information about each of your child's classroom teachers:

- Whether the State of Minnesota has licensed or qualified the teacher for the grades and subjects he or she teaches.
- Whether the teacher is teaching under an emergency permit or other provisional status by which state licensing criteria have been waived.
- The teacher's college major; whether the teacher has any advanced degrees and, if so, the subject of the degrees.
- Whether any instructional aides or similar paraprofessionals provide services to your child and, if they do, their qualifications.

If you would like to receive any of this information, please contact the District Office at 831-6901.

DO YOU HAVE A 4 YEAR COLLEGE DEGREE OR 5 YEARS EXPERIENCE IN A CAREER/TECH AREA?

BEING A SUBSTITUTE TEACHER IS HIGHLY REWARDING AND A WAY FOR YOU TO PASS ALONG YOUR KNOWLEDGE TO THE NEXT GENERATION. IN THE STATE OF MINNESOTA, A PERSON WITH ANY OF THE FOLLOWING WOULD BE ELIGIBLE FOR A SUBSTITUTE LICENSE:

- 4-YEAR DEGREE (IN ANY FIELD) FROM A U.S. REGIONALLY ACCREDITED COLLEGE/UNIVERSITY
- 5 YEARS OF EXPERIENCE IN A CAREER AND TECHNICAL AREA SUCH AS AG(FARMING), CONSTRUCTION, BUSINESS OWNERSHIP, MEDICAL SERVICES, ETC. CAN SUB IN A CTE ASSIGNMENT
- AN AA DEGREE OR HIGH SCHOOL DIPLOMA WITH ONE YEAR EXPERIENCE AS A PARA IN THE WINDOM SCHOOL DISTRICT.

WHEN YOU ARE A SUBSTITUTE TEACHER AT WINDOM AREA SCHOOLS, YOU CAN CHOOSE THE LEVEL AND CONTENT AREA THAT YOU'D LIKE TO WORK IN! YOU CAN WORK ONE DAY A MONTH OR EVERY DAY! THE OPTIONS ARE ENDLESS!

THE MORE YOU WORK, THE GREATER THE PAY! THE DAILY RATE OF PAY INCREASES THE MORE DAYS YOU WORK RANGING FROM \$180 PER DAY TO \$220 PER DAY.

JOIN THE WINDOM AREA SCHOOLS TEAM! CONTACT OUR LICENSING SPECIALIST HEATHER VAN DYKE AT HVANDYKE@ISD177.COM OR OUR HR SPECIALIST MARCIE BLOUIN AT MBLOUIN@ISD177.COM FOR MORE INFORMATION.



windom community education

REGISTER >>



Register for Community Ed classes online:

- Go to www.windom.k12.mn.us
- Click on Community Ed in the blue boxes
- Scroll through the class options, register and pay online for the classes you would like!

Refunds:

Community Education reserves the right to cancel classes due to lack of enrollment.

If you are unable to attend a class you have registered for, the class fee will be refunded minus a \$5 processing fee.

If a class meets multiple times, we do not refund for classes you do not attend.

If you have questions or would like to register for classes over the phone, please call or email Caitlyn Gilbertson at:
507-831-6910 ext. 513
cgilbertson@isd177.com

Regístrese para las clases de Educación Comunitaria en línea de la siguiente manera:

- Ingrese a www.windom.k12.mn.us
- Haga clic en Educación Comunitaria en los cuadros azules.
- Desplácese por las opciones de clases, regístrese y pague en línea por las clases que desee.

Reembolsos:

Educación Comunitaria se reserva el derecho de cancelar clases debido a la falta de inscripciones.

Si no puede asistir a una clase para la que se ha registrado, se le reembolsará el costo de la clase menos una tarifa de procesamiento de \$5.

Si una clase se reúne varias veces, no reembolsamos por las clases a las que no asista.

Si tiene preguntas o desea registrarse para clases por teléfono, llame o envíe un correo electrónico a Caitlyn Gilbertson al:
507-831-6910 ext. 513
cgilbertson@isd177.com



ADULT EDUCATION PROGRAM

Adult Basic Education classes are free to attend. Most classes provide a flexible schedule that allows you to attend when it works in your schedule.

Classes include the following education:

- **GED program:** help you prepare for the General Educational Development Test.
- **ESL/ELL - English as a Second Language:** helps students develop speaking, listening, reading, writing and grammar skills to communicate effectively in English in and around the community in which they live.
- **Basic Skills & Adult Literacy:** for students who need basic skills including math and literacy which may help with personal banking or filling out reports on the job.
- **Digital Literacy:** learn skills to access, navigate, organize and utilize information from digital or technology resources.
- **Workplace Skills:** helps develop skills that are transferable to nearly every job.
- **Citizenship:** helps students prepare and study information required by the USCIS.

NEW STUDENTS ONLY:

Orientation Dates:

August 25, 26 and 27

5:00 - 7:00 pm

Windom Elementary School,
Room 171

**New students need to attend only one of these nights to get registered.*

ABE CLASSES - ALL STUDENTS:

1st Day of Class:

Tuesday, September 2

Tuesday and Wednesday Evenings

5:00 - 7:00 PM

Windom Elementary School,
Room 171

*If you have any questions please call Kristi:
507-830-1207*

55+ DEFENSIVE DRIVER TRAINING

Register for a four or eight-hour Defensive Driving Course. Participants will receive a certificate after attending all portions of the class they registered for. Persons 55 or older are eligible for an insurance discount.

Session Date and Time:

October 6, 2025

12:30 - 4:30 PM

Instructor: Kathy Pederson

LOCATION:

**HIGHLAND BUILDING
68 10TH ST.
WINDOM**

**TO REGISTER
CALL CAITLYN:
507-831-6910 EXT. 513**

Hall Walking

Come inside out of the cold and walk our halls! WAHS is open to hall walkers twice a day. Enjoy the open halls to get your steps in! There is no fee to walk, but you do need to register with the Community Education Office and pick up a pass for school access.



**Dates: Mondays - Fridays
October 6 until March 27
Times: 6:45 - 7:30 AM and
3:45 - 6:30 PM**

Hall Walking is not available when the building is closed for weather reasons or holidays. Please use regular walking hours on Non-Student Days.

SOUND HEALING SESSIONS

SOUND HEALING USES VIBRATIONS AND SOUND—GONGS, SINGING BOWLS, DRUM AND MORE—TO HELP RELAX THE BODY AND MIND. IT CAN REDUCE STRESS, IMPROVE MOOD, AND PROMOTE A SENSE OF WELL-BEING.

AUGUST 24

SEPT 14

OCTOBER 5 & 26

NOVEMBER 16

DECEMBER 7 & 28

4:00 PM

RESERVATIONS REQUIRED/ATTEND ONE, A FEW OR ALL

YOGA CLASSES

TUESDAY @ 5:30

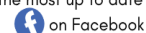
THURSDAY @ 5:45

DROP-INS WELCOME/CLASSES HELD YEAR ROUND



lookforwardwellbeing.com
355 9th St., Windom, MN 56101
507-822-4429

Find the most up to date information





LITTLE EAGLES

VOLLEYBALL CAMP

DATES: MONDAYS
SEPTEMBER 8, 15
OCTOBER 6

GRADES: KINDERGARTEN - 6TH GRADE
TIME: 3:30 - 4:30 PM (AFTER SCHOOL)
FEE: \$20

LOCATION: THE NEST (HS BLUE GYM)
COACHES: WINDOM COACHES & PLAYERS

- *A SMALL SNACK WILL BE PROVIDED
- *PLEASE BE SURE YOUR CHILD HAS TENNIS SHOES TO WEAR IN THE GYM
- *GRADES K-4: VOLLEYBALL PLAYERS WILL MEET YOU IN THE ELEMENTARY CAFETERIA TO WALK OVER TO THE HIGH SCHOOL
- *PLEASE PICK UP YOUR CHILD AT THE NEST GYM DOORS PROMPTLY AT 4:30 PM

LITTLE EAGLES NIGHT: MONDAY OCTOBER 13
 * PERFORMING IN BETWEEN SETS 2 AND 3
 * THIS WILL ALSO BE MEET THE EAGLES NIGHT
 REGISTER ONLINE WITH COMMUNITY ED

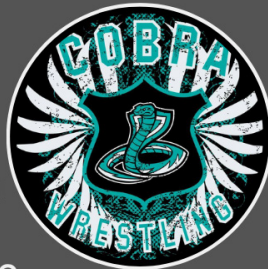
COBRA WRESTLING



LOOK FOR
REGISTRATION
OCTOBER 2025!

REGISTRATION IS FREE
 FOR ALL NEW WRESTLERS!

FOLLOW US ON FACEBOOK -
 WML COBRA YOUTH WRESTLING



CONTACT
 NICK KULSETH: 507-822-0626
 JOE FISCHENICH: 507-822-5012
 WITH QUESTIONS

Back to School

BACK PACK
GIVE-A-WAY!

August 19th
2pm-5pm

HELD AT THE GYM
 1012 5th Ave ■ Windom

For more information
 give us a call at:
(507) 407-3039



EOE/AA/ADA



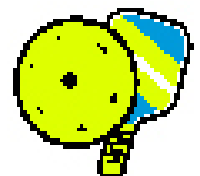
ADULT PICKLEBALL

A PADDLE SPORT FOR ALL
 AGES AND SKILL LEVELS.
New people are always welcome!



HOURS:
SUNDAYS: 2 PM
WEDNESDAYS: 6:30 PM

FEE: \$2/TIME OR
\$25 SEASON PASS



Played at WAHS Gold Gym.



Offering student classes and behind the wheel lessons.

For more information or to sign up call or text - **Dustin Stevens**
507-783-9090
or visit tristatedrivingschool.com

AFTERSCHOOL CHILDCARE



- Afterschool Childcare for children in Kindergarten to 5th grade
- Busing provided from Windom Elementary School
- Snacks are provided
- Fun indoor space and outdoor playground
- Cost is \$3.00/hour/child. One hour minimum charge.
- Weekly schedules needed for staffing and capacity restrictions.

CONTACT BRIANNA FRIESEN TO REGISTER OR FOR MORE INFORMATION!
BFRIESEN@ISD177.COM
507-831-6910 EXT. 602

WINDOM YOUTH HOCKEY ASSOCIATION

2025-2026 NEW PLAYER REGISTRATION NOW OPEN

LET'S PLAY HOCKEY!
Join the Team, Learn the Game, Have Fun!

WYHA MITE PROGRAM INCLUDES:

Boys and girls 4-9 years old (must be 4 years old as of June 1, 2025)

First-year Mite hockey registration is \$50

Skating experience not required, and all equipment is provided for first-year skaters, including jersey (player gets to keep jersey)

Practices vary from 1-3 sessions per week (November – March)

NEW PLAYER REGISTRATION FOR GIRLS 12U AND BOYS SQUIRT (10U) ALSO HIGHLY ENCOURAGED

REGISTRATION DEADLINE: SEPTEMBER 30, 2025
VISIT WINDOMHOCKEY.COM OR SCAN THE QR CODE TO REGISTER TODAY!



WINDOM AREA YOUTH FOOTBALL

SOUTH CENTRAL FOOTBALL LEAGUE

For youth entering 3rd- 6th grade in the Fall.
Home games will be located in Windom on Saturdays.

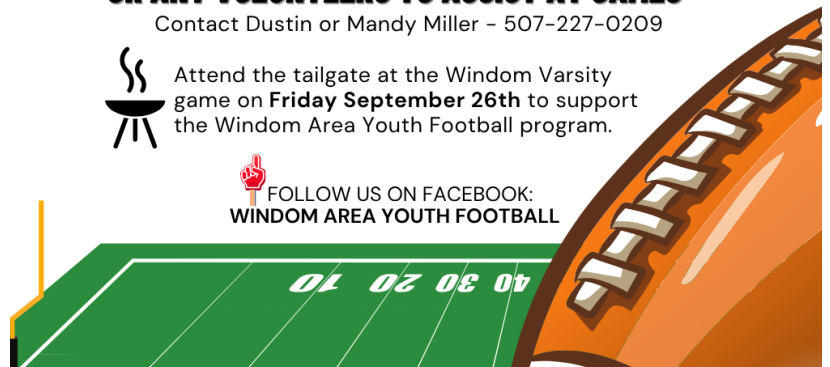
LOOKING FOR COACHES, REFEREES, DONATIONS OR ANY VOLUNTEERS TO ASSIST AT GAMES

Contact Dustin or Mandy Miller - 507-227-0209



Attend the tailgate at the Windom Varsity game on **Friday September 26th** to support the Windom Area Youth Football program.

 FOLLOW US ON FACEBOOK:
WINDOM AREA YOUTH FOOTBALL



WINDOM ECFE

PLAY, LEARN, AND GROW TOGETHER

WINDOM ECFE PROVIDES PARENT AND CHILD EXPERIENCES FOR PARENTS AND THEIR CHILDREN FROM BIRTH TO AGE 5 (NOT YET IN KINDERGARTEN).

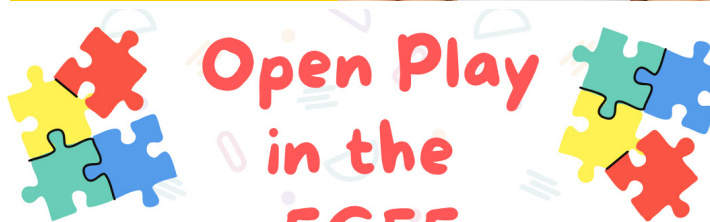
ENROLL IN A CLASS OR JOIN US FOR OUR MANY SPECIAL EVENTS. ALL CLASSES AND EVENTS ARE FREE.

WATCH FOR MORE INFORMATION ABOUT CLASS OFFERINGS IN OUR FALL NEWSLETTER.

IT WILL BE POSTED ON THE ECFE/BRIDGES PRESCHOOL - WINDOM FACEBOOK PAGE AS WELL AS OUR WEBSITE.

JOIN NOW!

[HTTPS://WWW.WINDOM.K12.MN.US/PAGE/HIGHLAND-EARLY-CHILDHOOD-CENTER](https://www.windom.k12.mn.us/page/highland-early-childhood-center)



Open Play in the ECFE Classroom



Thursday,
December 11
&
Monday,
December 15
6:00-7:00 p.m.

We will be opening up the classroom for families to come in and play. We will pull out some games and activities just right for your child/children ages birth-5 years old.

Like us on Facebook - Windom Community Education



WINDOM ECFE FALL FESTIVAL

COME JOIN US FOR FALL GAMES AND CRAFTS!
A LIGHT SUPPER WILL BE PROVIDED.

WHO: FAMILIES WITH CHILDREN BIRTH-5 YEARS
(OLDER SIBLINGS ARE WELCOME)

WHEN: TUESDAY, OCTOBER 7 FROM 5:00-7:00

WHERE: HIGHLAND EARLY LEARNING CENTER

FREE EVENT!!!

ECFE Holiday Open House

TUESDAY, DECEMBER 2
5:00-7:00 P.M.
HIGHLAND EARLY
LEARNING CENTER

All families with children Birth - 5 years old (and older siblings) are welcome to join us for holiday crafts, games, pizza, and a visit with SANTA!



FREE ADMISSION
AND PIZZA!



Community Education - Page 5

Windom Figure Skating Club



Open to all kids ages 3 and up

Limited scholarships available
First year skaters are eligible for free lessons!

Watch for Registration after October 1st
www.windomfigureskating.com

Questions:
Email: windomfigureskatingclub@gmail.com



Windom Zeds VOLLEYBALL TRY OUTS FALL 2025

FOLLOW OUR FACEBOOK PAGE:
WINDOM ZEDS VOLLEYBALL
TO STAY UP TO DATE

WINDOM JUNIOR RACQUETBALL

FALL YOUTH RACQUETBALL LESSONS/LEAGUE

IF INTERESTED IN RECEIVING INFORMATION, PLEASE EMAIL CAITLYN GILBERTSON AT CGILBERTSON@ISD177.COM WITH A HEADING OF "WINDOM JUNIOR RACQUETBALL" AND PROVIDE:

- NAME OF THE CHILD INTERESTED IN PLAYING
- GUARDIAN'S NAME
- CELL PHONE NUMBER THAT ACCEPTS TEXT MESSAGES



FUNDRAISER FOR THE WINDOM CHEERLEADERS!

CHEER CAMP

September 22-26, 2025
Elementary School Gym
Fee: \$20

Grades: Kindergarten - 6th Grade
Dates: Monday, Tuesday, Thursday, Friday
*No camp on Wednesday
Time: After school- 4:30 pm

Youth cheerleaders will perform at the football game on September 26th

There will be a small snack provided after school.
*There will be no t-shirts, pompoms or uniforms for this camp.
Register online - Community Education



HEROES BEHIND THE BADGES

BLOOD DRIVE

GIVE THE GIFT OF LIFE

MONDAY, SEPTEMBER 22

9:00 A.M. - 4:30 P.M.

At Windom Area Health

Windom Law Enforcement/EMS and the Windom Fire Department will be competing to see who can recruit the most blood donors for the community's blood supply in the annual "Heroes Behind the Badges" community blood drive. Each donor designates their donation to the 'team' of their choice! Watch for the sign-up link on the Windom Area Health Facebook page and website or call 831-2400 for more information.

W WINDOM AREA HEALTH



Walk With Ease Program

FREE Walking Class for All Ages!

Runs from September 3rd through October 15th

Mondays & Wednesdays | 11:00–11:30 a.m.

Location: Be Well Path at Windom Area Health Campus

Our Group Walking Class will focus on getting outside and getting moving! This group will be tailored to those who struggle with arthritis or other types of chronic pain, working to build strength and endurance over the course of 6 weeks.

To learn more or to register, call 507-831-0672!



SAVE THE DATE
for our first annual

Turkey Trot 5K

on November 15th.
Registration to open soon!



**WINDOM
AREA HEALTH**

Wellness Center

2150 Hospital Dr. | Windom, MN 56101 | windomareahealth.org



JOIN THE WINDOM EAGLES BOOSTER CLUB!

Meetings are held the first Wednesday of every month at 4:30 pm in the Middle School Commons

LOOK FOR MORE INFORMATION ON OUR FACEBOOK PAGE.

WINDOM EAGLES BOOSTER CLUB

BOOSTER CLUB GOLF TOURNAMENT
17 AUGUST 2025
WINDOM COUNTRY CLUB



COMMUNITY INPUT NEEDED

WISHING COMMUNITY ED OFFERED A SPECIFIC ACTIVITY?

ARE YOU INTERESTED IN HOSTING OR INSTRUCTING A SESSION, GROUP, OR CAMP?

FILL OUT THE SURVEY LINKED IN THE QR CODE



KEEP UP WITH THE LATEST COMMUNITY ED LISTINGS. ONLINE REGISTRATION LINKS ARE ON OUR WEBSITE!

WWW.WINDOM.K12.MN.US/PAGE/COMMUNITY-ED

