

# » MARCH 2026 REFERENDUM PUBLIC PRESENTATION

*Strong School, Strong Community!*

 **SOLUTIONS**  
ARCHITECTURE  
FRANK A. MESSINEO • AIA



## PROJECT SCOPE



# » PROJECT CATEGORIES



**Learning**

ENHANCED LEARNING  
ENVIRONMENTS



**Safety**

STUDENT & STAFF  
SAFETY



**Operations**

KEEP UP-TO-DATE  
WITH OPERATIONS



**FACILITIES ENHANCE LEARNING**

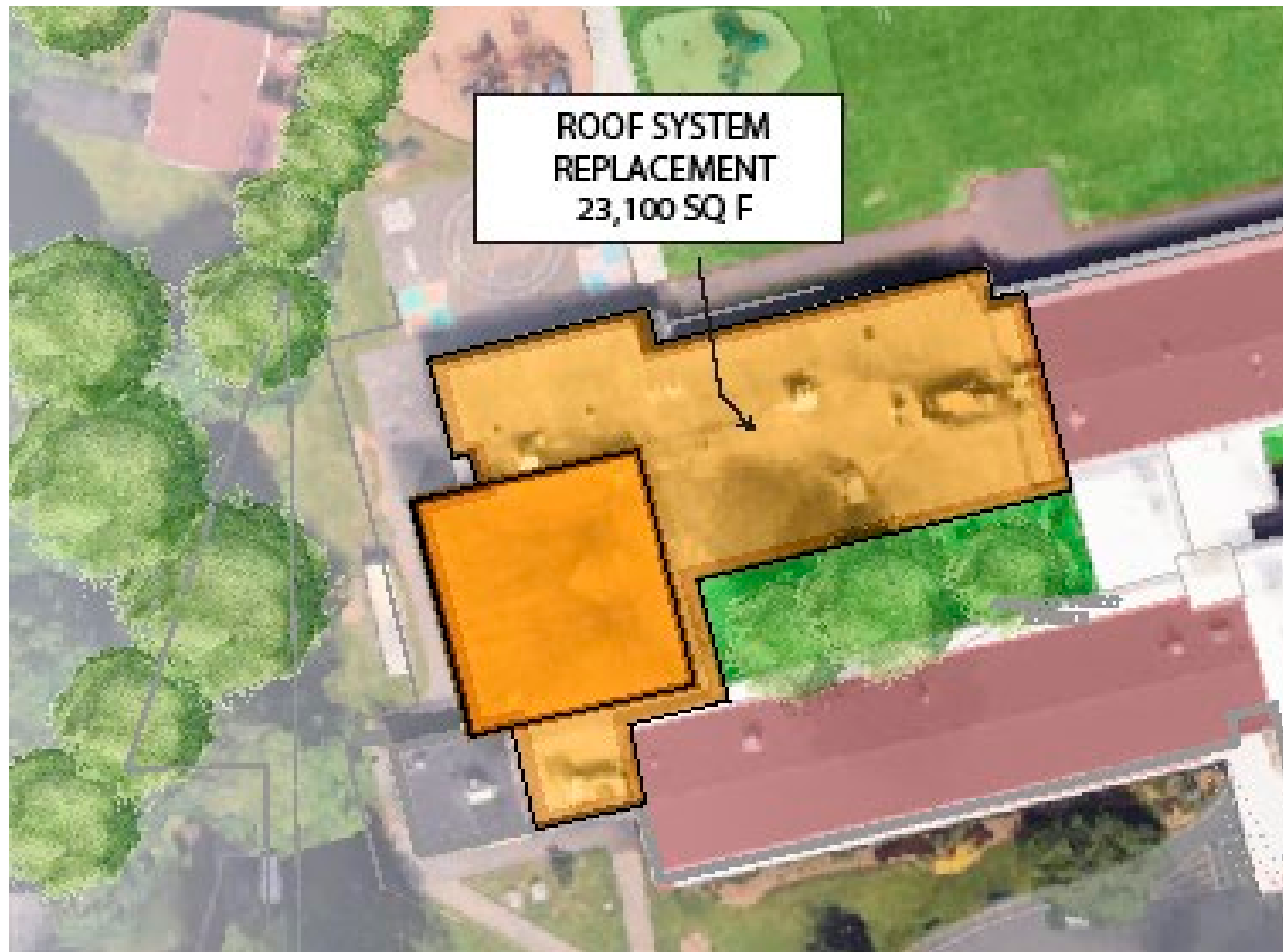
# PROJECT SCOPE - CAPITAL PROJECTS

# » ROOFING SYSTEM REPLACEMENTS

SCHOOL  
REIMAGINED



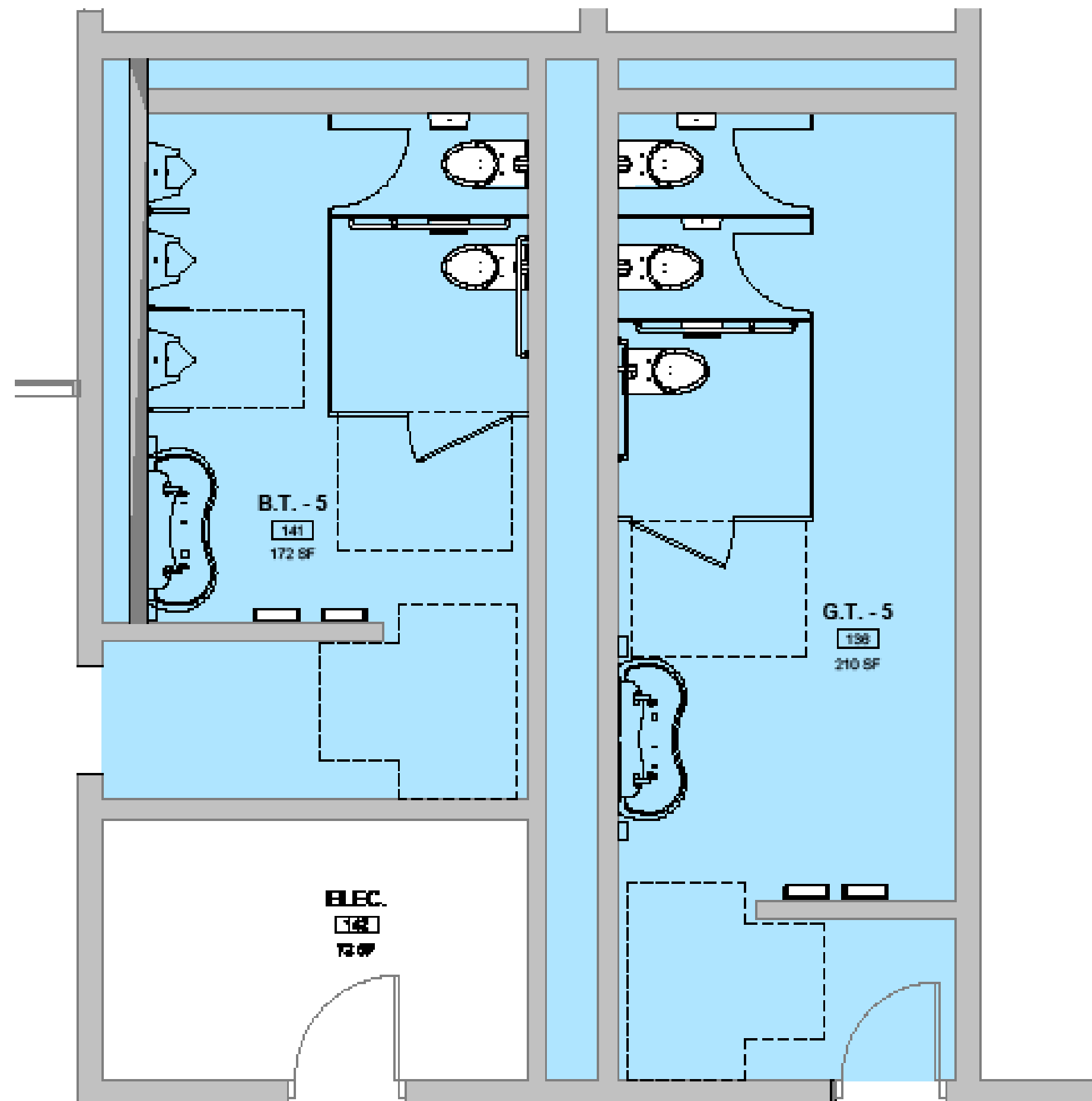
## ■ WHY ROOFING SECTION REPLACEMENT?



- The District is proposing to replace the aging 23,100 square foot roofing system over the 1967 section of the building, which is currently out of warranty and beyond its useful life. This roof replacement will head off failures that could result in leaks that disrupt the building's functionality and require costly ongoing maintenance.
- By upgrading these roof sections, the District will address water infiltration issues, improve energy efficiency, and upgrade the roof drainage system, ensuring long-term protection of the facility and more comfortable environment for students and staff.

# » UPGRADE EXISTING TOILETS

SCHOOL  
REIMAGINED



- WHY RENOVATE (2) EXISTING TOILET ROOMS NEAR GYM FOR PUBLIC USE?
- To expand equal access for all individuals, the District is proposing to renovate two existing general Toilet Rooms near the Gymnasium to meet current ADA accessibility standards.
- These upgrades will expand accessible facilities for students, staff, and community members with disabilities, further supporting inclusivity and reinforcing the District's commitment to upholding the standards of the Americans with Disabilities Act.

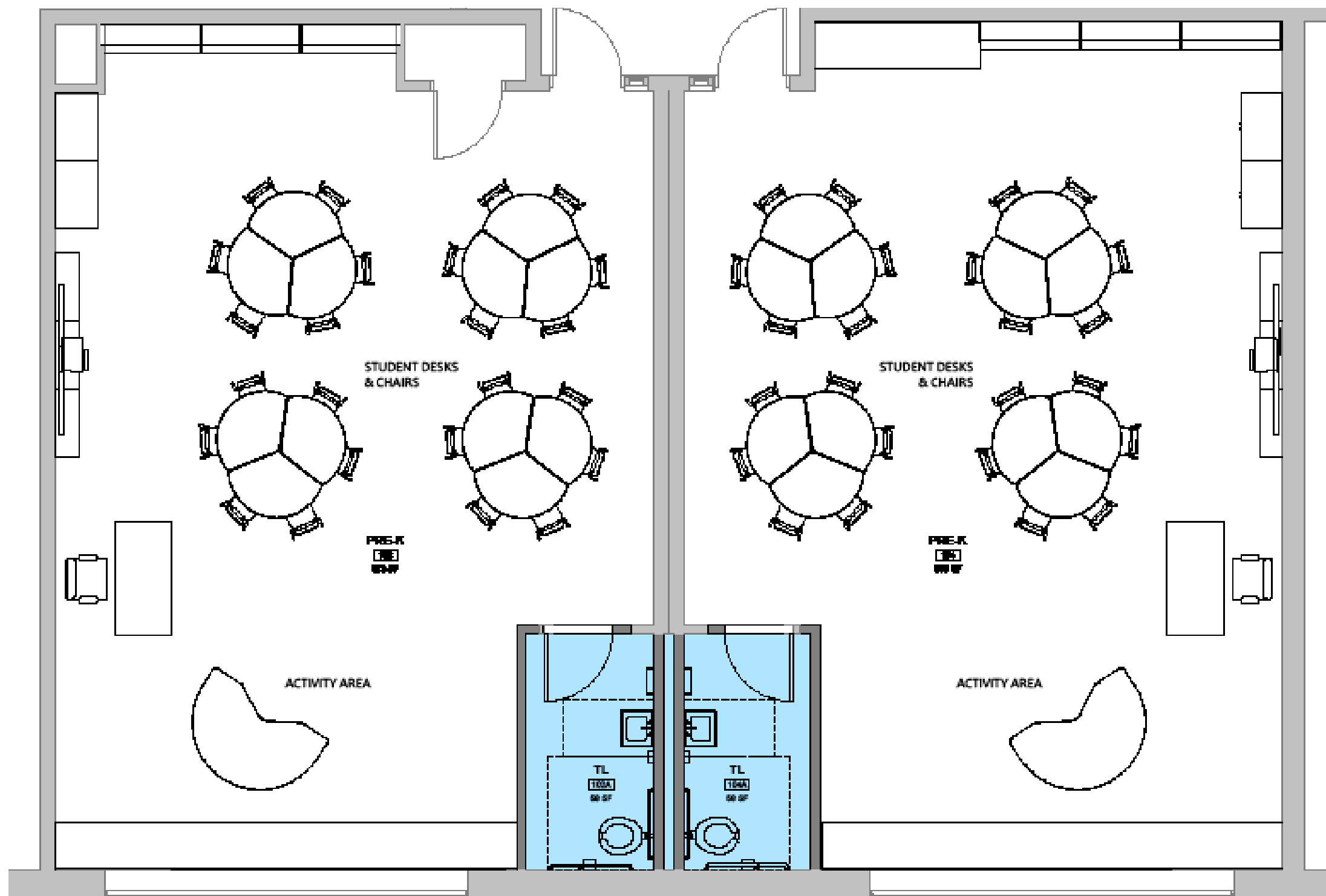
# » ADD CLASSROOM TOILETS

SCHOOL  
REIMAGINED



## ■ WHY CONSTRUCT (2) NEW CLASSROOM TOILETS FOR REASSIGNED PRE-K CLASSROOMS

- To meet state requirements for licensed Kindergarten and Pre-K classrooms, the District must reassign classrooms and construct individual toilet rooms within two rooms
- This essential upgrade enables the creation of two fully compliant Pre-K classrooms, expanding early childhood education opportunities within the District. By providing age-appropriate facilities, the project ensures a safe, accessible, and developmentally suitable environment for our youngest learners.





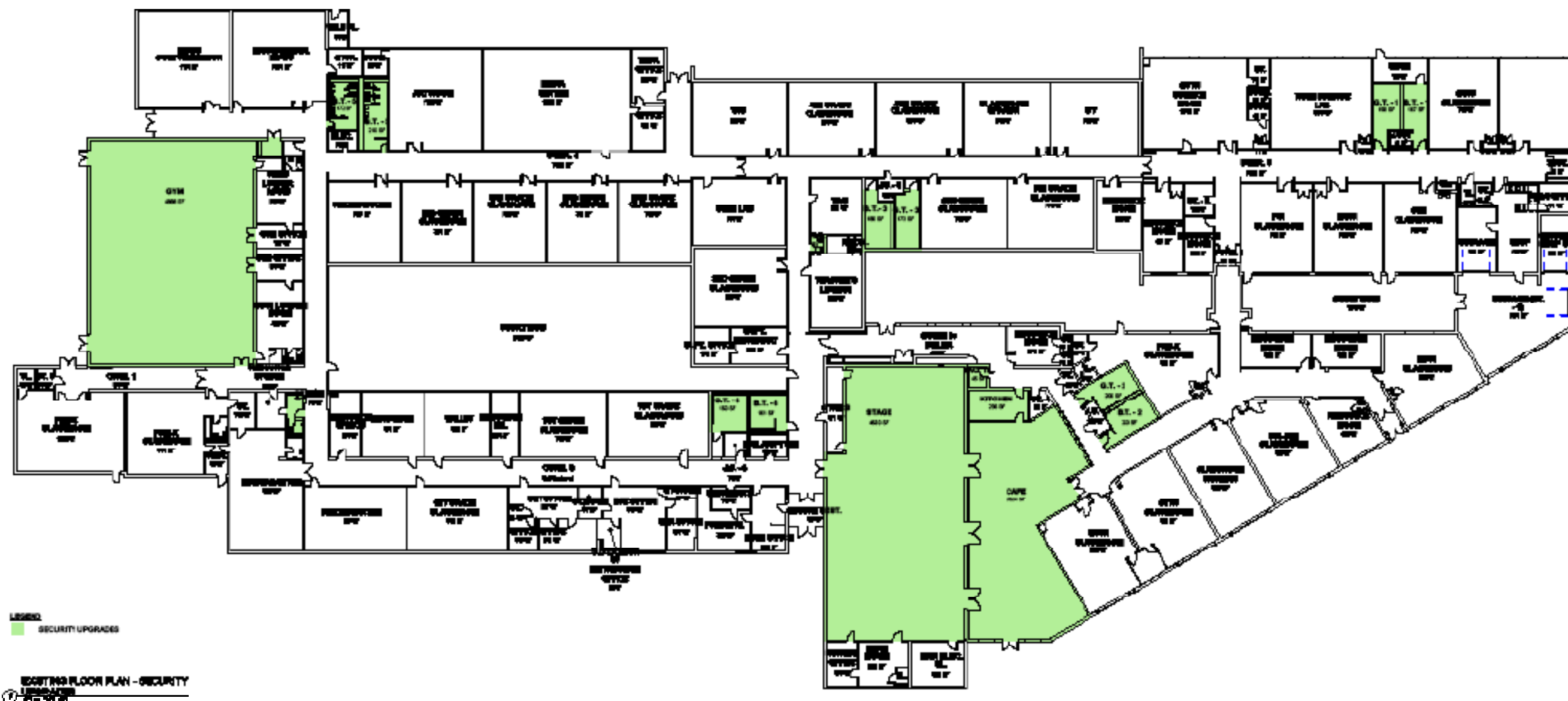
# » LOCKDOWN/ACCESS CONTROLS

SCHOOL  
REIMAGINED



## ■ WHY PROVIDE LOCKDOWN/ACCESS CONTROLS FOR KEY SPACES IN THE BUILDING?

- To enhance the overall safety and emergency preparedness of the school facility, the District is proposing to install lockdown and access control systems for key areas of the building, including toilet rooms, the Multipurpose Room, and the Cafeteria.
- These systems will allow staff to secure and restrict access to these spaces during a critical incident, such as an active shooter event, thereby improving the District's ability to protect students, staff, and community members during emergencies.



# » ADD A FORMAL DROP OFF / PICK UP LANE ON TAPPAN ROAD

SCHOOL  
REIMAGINED



- ADDING A SHORT-TERM DROP OFF LANE FOR PARENT DROP OFFS ON TAPPAN ROAD
  - To improve safety, traffic flow, and delays with arrival and dismissal procedures, the District is proposing to construct a curb cut with parallel drop off spaces for parent drop off / pick up.
  - This new drop off lane will allow parents to do what they are currently doing, however in a safer manner than what is currently occurring - parking on the lawn area and walking students in. This enhances safety for students, staff, and the general public. Students will be required to walk around to the front of the building for entry.



# » CAPITAL PROJECT COSTS

## REFERENDUM CAPITAL PROJECTS - BUDGET ANALYSIS

CAPITAL / INFRASTRUCTURE PROJECTS	TOTAL PROJECT COSTS	APPROVED DEBT SERVICE AID	FINAL COST AFTER DEBT SERVICE AID
ROOFING SYSTEM REPLACEMENT / UPGRADES	\$2,157,947.00	\$733,701.98	\$1,424,421.00
BOYS & GIRLS TOILET #5 ADA UPGRADES	\$423,450.00	\$142,272.33	\$269,577.00
LOCKDOWN / ACCESS CONTROL - MULTIPURPOSE ROOM, CAFETERIA, TOILETS	\$102,634.38	\$34,896.00	\$67,739.00
CONSTRUCT A CURB CUT WITH A SINGLE DROP OFF/ PICK UP LANE FOR PARENTS (APPROX. 15 CARS)	\$317,969.00	\$0.00	\$317,969.00
<b>TOTAL PROJECTED COSTS</b>	<b>\$3,002,000.13</b>	<b>\$910,870.54</b>	<b>\$2,091,130.13</b>

**30.34% DSA**



# PROJECT SCOPE -

## EDUCATIONAL PROJECTS



# (2) CLASSROOM ADDITION



# » MODULAR ADDITION...

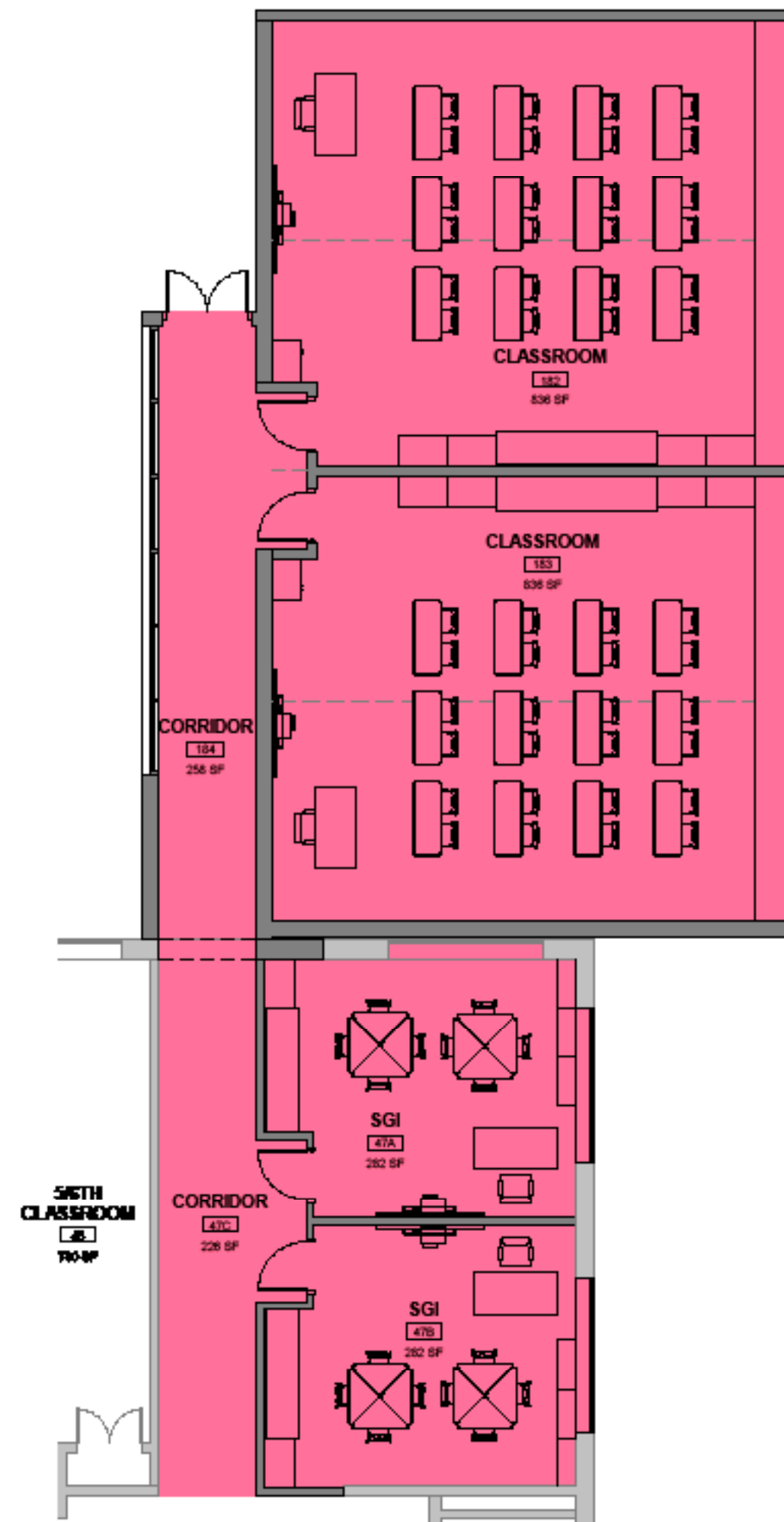
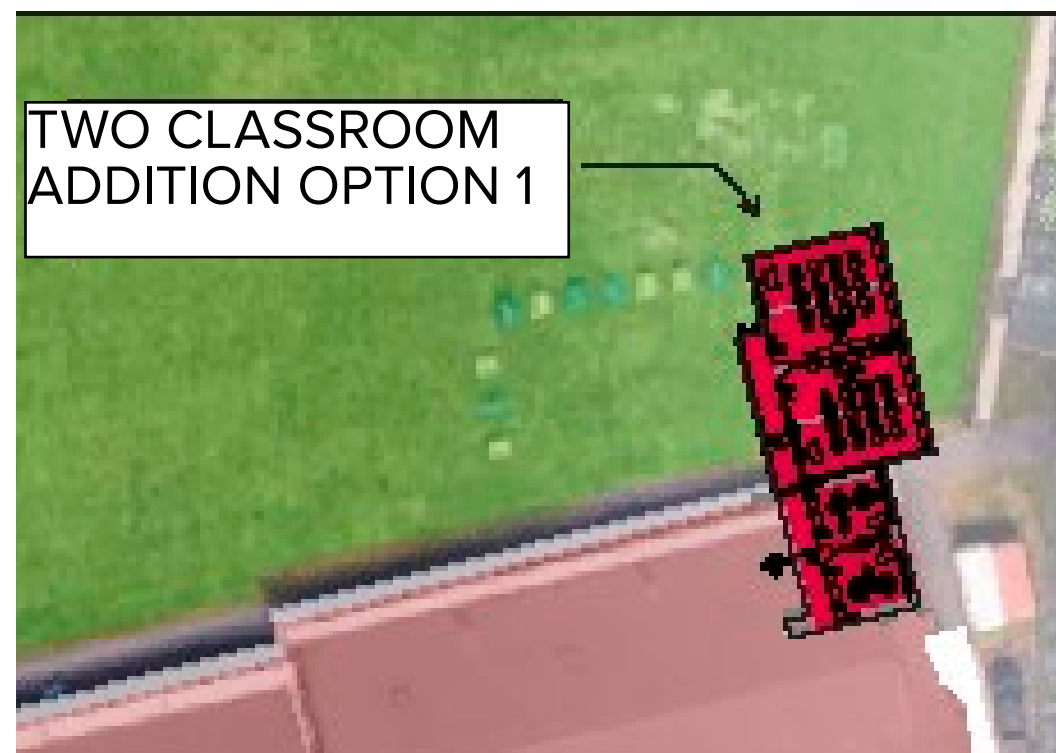
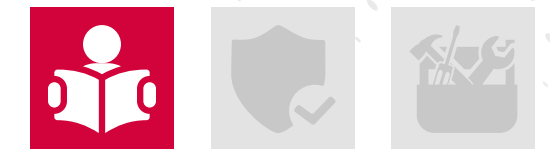
SCHOOL  
REIMAGINED





# » WHY CONSTRUCT A MODULAR ADDITION?

SCHOOL  
REIMAGINED



- **CONSTRUCTING A NEW (2) CLASSROOM MODULAR ADDITION - INTERIOR CORRIDOR THRU EXISTING CLASSROOM BUT ADDING TWO SGI CLASSROOMS**
- This two-classroom addition will allow the District to bring back out-of-district placements for Special Education, Least Restrictive Environment, creating a more inclusive learning environment and strengthening its educational offerings, and meeting the needs of our growing population.



# » MODULAR ADDITION...

SCHOOL  
REIMAGINED



# » MODULAR APPEARANCES ...

SCHOOL  
REIMAGINED



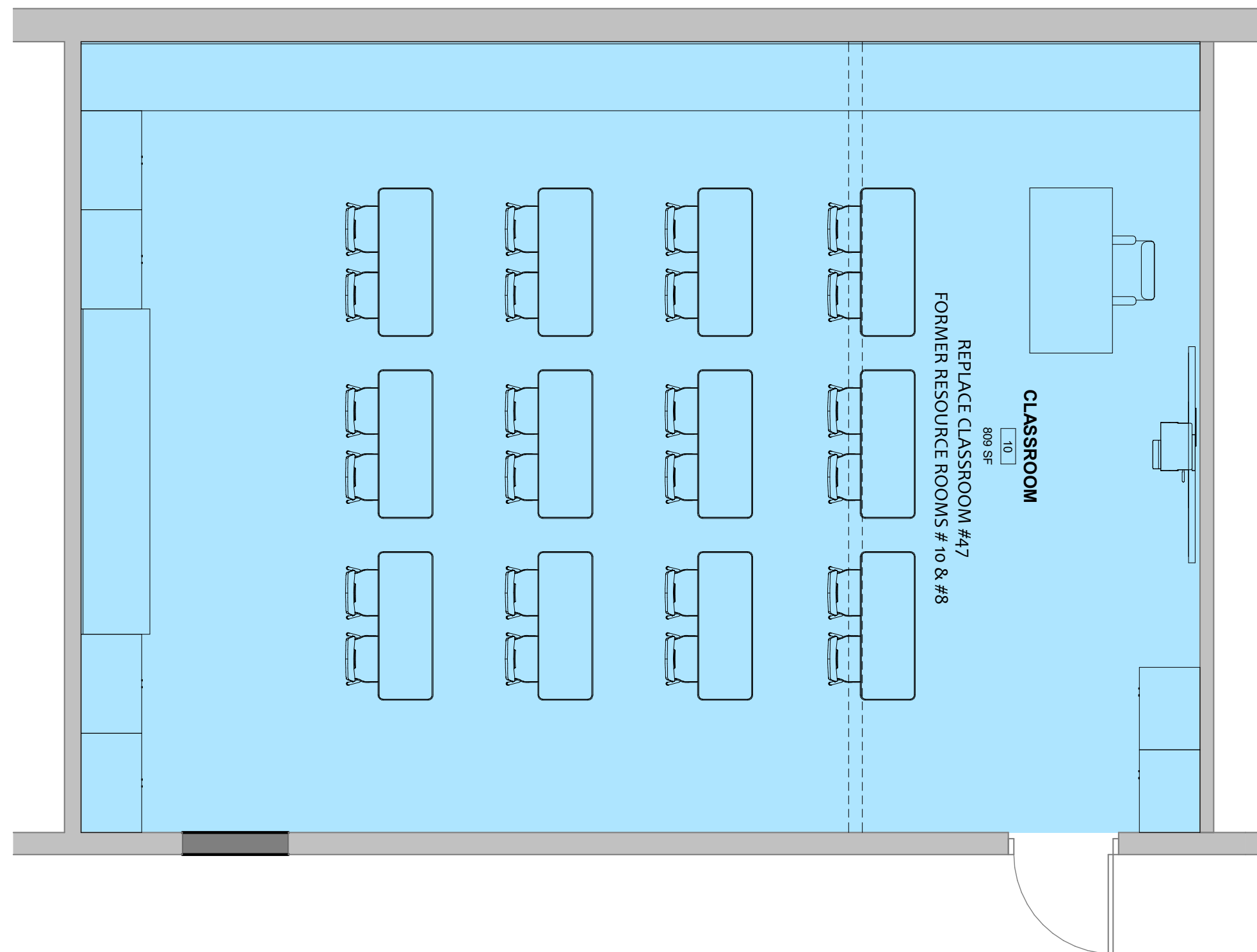


# » INTERIOR CLASSROOM RENOVATIONS

SCHOOL  
REIMAGINED



ENLARGED FLOOR PLAN- CLASSROOM



- **CONSTRUCTING THE (2) CLASSROOM ADDITION - WILL SACRIFICE A FULL SIZE CLASSROOM**
  - The existing full sized classroom will become a corridor and (2) SGI Classrooms. We will reclaim that full sized classrooms by combining (2) existing SGI Classrooms 10 & 12 into a larger room.
  - The resulting room will be used for MD (Multiple Disabled) student instruction.

# » PROJECTED COSTS

## EDUCATIONAL PROJECTS - SCOPE / BUDGET ANALYSIS

(2) CLASSROOM ADDITION / INTERIOR RENOVATIONS	TOTAL PROJECT COSTS	APPROVED DEBT SERVICE AID	FINAL COST AFTER DEBT SERVICE AID
(2) CLASSROOM MODULAR ADDITION - INTERIOR CORRIDOR THROUGH CLASSROOM	\$ 1,415,472.00	\$83,637.64	\$ 1,406,495.00
INTERIOR RENOVATIONS - CR#47 TO CREATE CORRIDOR AND (2) SGI ROOMS +CR #10+#12 TO REPLACE CR#47	\$1,342,905.50	\$449,903.00	\$707,789.00
PRE-K TOILET ROOM - ADD RM 102 & 104	\$347,100.00	\$118,014.00	\$229,086.00
TOTAL PROJECTED COSTS	\$3,105,478.00	\$658,238.64	\$2,247,239.00
			25.7% DSA





For further information and to keep updated on the District-wide Facilities Renovation Program Referendum, please scan the QR Code to the left or visit the district website:

**[www.wearenorwood.org/page/referendum](http://www.wearenorwood.org/page/referendum)**

---

**SOLUTIONS ARCHITECTURE | FRANK MESSINEO, AIA**

**fm@solutions-arch.com | [www.solutions-arch.com](http://www.solutions-arch.com)**

**973-484-4800 (OFFICE) | 201-618-0606 (CELL)**