

Excellence through Service



Lewis-Palmer School District

HALL of FAME

2016 Inductees

Lewis-Palmer School District

Hall of Fame Award

Honoring the Past, Looking to the Future

This year, Lewis-Palmer School District celebrates the fourth induction into the Lewis-Palmer Hall of Fame, established in 2013. The purpose of the Hall of Fame is to recognize individuals who have made significant and lasting contributions to the success of the District and its students. Each year, a committee of volunteers solicits nominations and selects the inductees. Lewis-Palmer School District benefits greatly from the multitude of dedicated and talented people, past and present, invested in creating quality local schools. Superintendent Karen Brofft claims, "The Hall of Fame is a great opportunity to recognize important contributors to our community, our students, and our district."

Hall of Fame Induction Ceremony:
September 17, 2016

Lewis-Palmer Consolidated School District #38

Board of Education 2016

Mark Pfoff, President

Sherry Hawkins, Vice President

Matthew Clawson, Secretary

Dr. John Magerko, Treasurer

Sarah Sampayo, Director

Superintendent of Schools

Karen Brofft, Superintendent

Cheryl Wangeman, Assistant Superintendent



Nomination Process

Candidates may have served the District as classified or licensed staff members, volunteers, elected officials, or in other capacities. Successful nominees will have made significant, lasting contributions to the District and its students, or to supporting the District vision. Nominations will be accepted during the next nomination timeframe via the website <http://lewispalmer.org> or by mail to LPSD Hall of Fame Committee, C/O LPSD, PO Box 40, Monument, CO 80132.

Volunteers willing to participate in the selection process or future awards programs may communicate their interest by emailing info@lewispalmer.org.

2016 Hall of Fame Committee

Special thanks to the volunteers who made this year's event possible:

Rich Stewart and Caryn Collette - Committee Co-Chairs

Caryn Collette - Research/Writing Chair

Marie Revak - Memorabilia/Display Chair

Deb Stumpf - Induction Event Chair

Ted Bauman

Ida Liebert

Mike Burris

Amy O'Dair

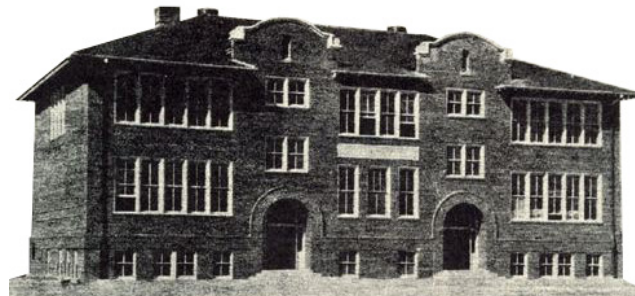
Avis Cook

Kathy Thirkell

Meg Edmonds

Jodi Wyss

Jeff Ferguson



Timeline: Some of the Major Milestones in our History

- Late 1880's Palmer Lake School District #33 established for grades 1-8
- 1874 Founding of Monument School District #5, known as "The Lewis School District"
- 1917 Class offerings expand to 9th through 12th grades
- 1920 The Lewis School opens in Monument serving high school grades
- 1935 Palmer Lake Elementary building constructed
- 1948 School Districts #33 and #5 combine to become "Lewis-Palmer Consolidated School District No. 38"
- 1957 Lewis-Palmer High School building built at 66 Jefferson St. in Monument, later to become Grace Best Elementary
- 1973 Lewis-Palmer Elementary School opens
- 1980 New building for Lewis-Palmer High School opens on Higby Road
- 1988 Ray E. Kilmer Elementary opens at 4285 Walker Road
- 1994 Lewis-Palmer Middle School opens at 1776 Woodmoor Drive
- 1996 Lewis-Palmer Charter Academy opens, later to be renamed Monument Academy Charter School
- 2001 Prairie Winds Elementary and Creekside Middle School open
- 2008 Palmer Ridge High School opens
- 2010 Reconfiguration closes Creekside Middle School, relocates Grace Best Elementary to establish Bear Creek Elementary
- 2012 Lewis-Palmer Homeschool Academy opens at Grace Best Education Center building



Patricia Ann Heinz

Special Legacy Award

Patricia Ann Heinz

In the mid-1800s, a wave of German immigrants came to the United States. They were called the 1848ers, and one of them was a man named Alois Palmer. Alois and other 1848ers ventured into Sioux Indian Territory, and there they founded the town of New Ulm, Minnesota. Alois Palmer was Pat Heinz's great-great grandfather, and New Ulm was Pat's birthplace and childhood home. Born to Donald and Joanne Palmer in 1956, Pat grew up surrounded by family and friends. She graduated from Cathedral High School in 1975. Then it was on to St. Cloud Teachers College where she graduated with a Bachelor's Degree in special education. While Pat was fond of her hometown, she had an adventurous spirit that propelled her to travel the world and take a teaching position with a Department of Defense Dependents School in Germany.

While Pat was teaching in Germany, a young Air Force navigator (Pete Heinz) was stationed at Rhein-Main Air Base. Pete's commanding officer thought it a good idea to provide new teachers an orientation flight so they could understand the Base's function. Pete was the navigator, and as lively Pat climbed aboard his plane, he was quickly, but quietly, smitten. In his mind, he named her Miss Merry Sunshine. A short time later, Pete was relaxing at the Officers Club on a Friday evening with his friend the Chaplain. Pete must have perked up when he saw Miss Merry Sunshine walk in because the Chaplain asked, "Do you know

that girl?" Their first date on Valentine's Day was arranged by the Chaplain, and by Easter, Pete proposed. They married in June 1985, and the Pat and Pete Heinz family was established.

Pete's career brought the family to the Tri-Lakes area. In 1997, Mrs. Pat Heinz was hired through Pikes Peak BOCES to teach special education in Lewis-Palmer School District. Pat loved being a stay-at-home mom, but when Kilmer Elementary School principal Dr. Ida Liebert offered her the job saying, "Tell me whatever you need to start this program," Pat was inspired by the possibilities. With energy, intelligence, and determination, Mrs. Heinz went on to pioneer special education practices designed to meet the unique needs of children with autism.

Pat created a special education program for students with moderate needs. She was exceptionally adept at assessing students' needs and marshalling resources to meet those needs. She offered the parents of her students hope and reassurances with realistic parameters. She empathized with her students and their struggles. One parent whose child was served by Mrs. Heinz recalls, "Calm, gentle, insightful, giving, patient, and passionate...these are all words I would use to



Patricia working with students

describe Pat Heinz. With each passing year, District 38 has the honor of graduating extremely high-achieving individuals. AP classes, perfect GPA's, and other awards adorn those kids. My child wasn't one of these. His achievements were far greater. He graduated. He was prepared to earn a living. He knew how to create successful relationships and work collaboratively. The foundation with which Pat blessed my son is a legacy. To me, that 'one' means the world."

As Pat's career progressed, she noted that many of the children coming into the moderate needs program were on the autism spectrum. Therefore, she immersed herself in learning about autism to better serve the needs of her students. She was determined to help everyone understand autism and never failed to find workshops and conferences for classroom teachers and parents to attend. In 1999, Pat earned



Bowling with Students

a separate program designed specifically to meet their needs. The District authorized an elementary age autism program at PWES. Soon parents began asking about options for their three- and four-year olds. Eventually, under Pat's leadership, an integrated pre-school autism program was designed and implemented. It is indeed her legacy to Lewis-Palmer School District. Pat worked tirelessly to integrate children with special needs into the regular classroom. She was a teacher of teachers, assisting educators to better serve children who struggled with disabilities.

a Master's Degree in special education from the University of Colorado, Colorado Springs.

She believed very strongly that all would benefit from learning more about these children and that integrating them into their same-age classrooms would enrich their lives as well as the lives of their peers. It was magical to see! Under her guidance, adults and children alike came to love and be enriched by these students.

In 2001, Pat joined the inaugural staff at Prairie Winds Elementary School. Given Pat's knowledge and advocacy for children in the autism spectrum, she quickly recognized the need to create

Pat would often go on home visits where she warmly and sincerely built trust. She was instrumental in forming SEAC, the Special Education Advisory Committee. Pat had a way of empowering kids and adults as well. A former teacher writes, "She had the unique ability to bridge the gap of school and home within the SpEd community with clear, precise goals and always with her students' best interests at heart."

Pat's classroom was a dynamic place. She balanced the right blend of academics and life skills. It was a safe, non-judgmental environment where expectations were high and appropriate. Many fondly recall Mrs. Heinz's weekly cooking classes. Students learned how to prepare a meal from start to finish, but the best part was students inviting their friends to share lunch - quite the coveted invite. Pat knew this was about more than learning to make English muffin pizzas. These lunches were another way to bring all students together and create camaraderie within the school community. She knew it was important for her students to learn to give. She took her students horseback riding, bowling, ice skating, swimming, and shopping. Certainly, these were fun activities, but there were serious and intentional goals attached to these trips, such as learning to interact with others, behaving well in public, and trying new things.

Pat's motivation was her love of life, family, school, and her work. According to Pete, "She had a smile that

lit up the world." She was known as the cruise director at work, always inclusive, energetic, and full of fun. Pat's wonderful sense of humor and her ability to pull off a hilarious prank touched all staff members. Pat was a giver of gifts, encouragement, and her heart. She made it look easy, but she was a true worker bee.

Pete and Pat's three children all graduated from Lewis-Palmer High School. Laura, encouraged by her mom to become a nurse, is practicing in Utah. Josef is married and is an Air Force fighter pilot, and Brandon is working on an MBA at UCCS.

Pat Heinz, a woman who made the world a better place, left it too soon. Pat courageously fought cancer until she died in November 2008.

Oh, but what a joyful life she lived, and what joy she gave to the lives of so many in Lewis-Palmer School District and beyond. In the words of one of her students, now a successful young man who has overcome much, "Mrs. Heinz, thank you for the memories. You have helped me with my disabilities. You have helped me with my life."

By Caryn Collette and Ida Liebert



Fun with Staff

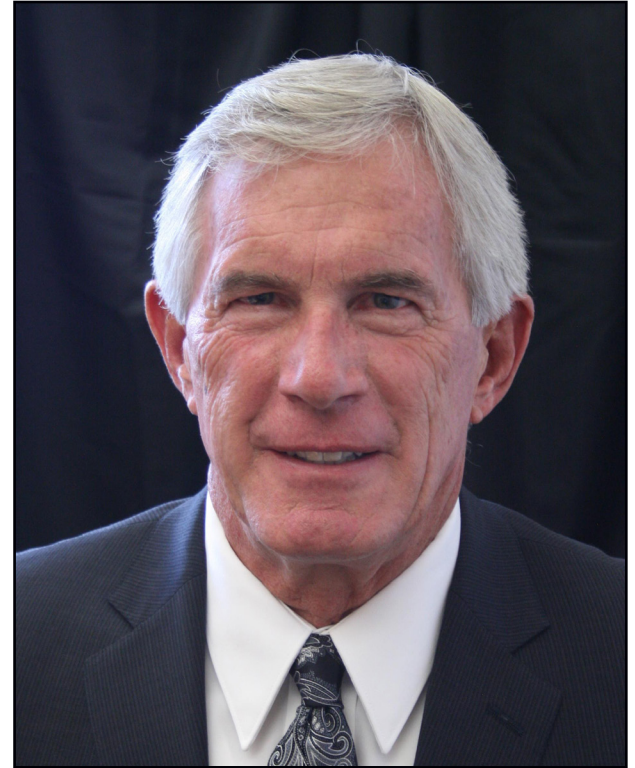
Ken Emry

Mr. Ken Emry is a leader who has exceptional knowledge of the complicated and ever-changing world of high school athletics. He consistently led by example and generously served others.

Ken Emry began his career at Lewis-Palmer High School in 1975 and retired in 2003. During his tenure, he served as physical education and health teacher for 12 years, the head football coach for eight years, both assistant basketball and track coach for six years, and athletic director/assistant principal for 24 years.

A former colleague noted that upon joining the staff, “Ken immediately turned the football program to the positive and introduced and taught new lifetime activities in physical education.” As a teacher, Ken wrote innovative and comprehensive curriculum that was adopted department-wide. In 1976, Ken managed the transition to co-educational PE classes.

During his years at LPHS, the school experienced great change. It grew from a school competing at the 2A level to a powerhouse that dominated athletically at the 4A level: 18 teams won state championships, 16 teams were state runners-up, and 26 teams made it to final-four appearances. LPHS also garnered 97 league championships and was Colorado High



Ken Emry

School Athletic Association Academic State Champion a total of 10 times. Ken is especially proud of this academic award. Part of the change associated with the school's growth also entailed LPHS changing its league alignments. As the school became members of different leagues, Ken naturally emerged as a leader among area athletic directors. People quickly respected him because of his vast knowledge and expertise about multiple sports, his calm demeanor, and his acute work ethic.

Ken's expertise earned him numerous prestigious recognitions. He was a member of the Colorado Athletic Directors Association for 22 years, National Interscholastic Activities and Athletics Association for 13 years, and American Association of Health Physical Education Recreation and Dance for 22 years. Twice, in 1988 and 2002, Ken was named 4A Athletic Director of the Year. In 2004, he was named CADA's Athletic Director of the Year for all classifications. He continues to volunteer at the CHSAA State Track Meet, track meets at the United States Air Force Academy, and at LPHS athletic events. Ken's continued involvement in so many organizations

after his retirement was the impetus behind his receiving the CADA's 2014 Retired Athletic Director of the Year Award. Additionally, Ken has served for six years on the CHSAA Board of Control; for seven years he was the Pikes Peak

League Commissioner; and he continues to serve on the CHSAA Appeals Committee.

While Ken's knowledge is extensive, what truly elevates him to exceptional leader status is his "can-do" manner. He never backs down from a challenge, and he does not ask anything of others that he wouldn't do himself. One coach recalls, "Ken did things the right way, no short cuts, no excuses, no hidden agendas or favorites. Things were explained to staff that allowed us to see the big picture. Coaches were aware

of the policy and the consequences for not following policy. I saw Ken strip fields, tape wrestling mats, pay officials, shovel snow, shovel snow, shovel snow, move bleachers, talk with upset parents, talk with angry coaches, and substitute for the shop teacher... early in the morning to late at night, weekdays and weekends - all for a high school in Monument." Ken Emry personifies what it means to lead by example. A former principal writes, "Ken goes above and beyond even the outlandish time demands that most athletic directors have come to expect. Ken always wants everything to run smoothly for his coaches and fans. Even when he is not scheduled for an event, he attends. He truly breathes LPHS athletics. Ken



Coach Emry

"A good leader is one who knows the way, goes the way, and shows the way."

- John Maxwell



Emry and Lewis-Palmer High School Coaches



Assistant Principal Dean Palmer, Principal Dr. Diane Burke, and Athletic Director Ken Emry

believes that it is his responsibility to oversee every aspect of the athletic program, and he takes his responsibility seriously. I have hired many people, but I have not hired one person with a work ethic that even comes close to matching Ken's. He is truly one of a kind." Ken embraced both the big issues and the countless details so that coaches could focus on preparing their athletes for competition; fans of all ages could enjoy a spirited, first-class event; and athletes could learn lifelong lessons and flourish as young men and women. Yes, Ken Emry knew high school athletics but not in an ivory tower way. He deeply entrenched himself in every aspect of it, and he did it going way beyond the ordinary for his coaches, his school, but mostly for all those athletes who proudly wore the orange and black and called themselves Rangers.

Know the way... Go the way...

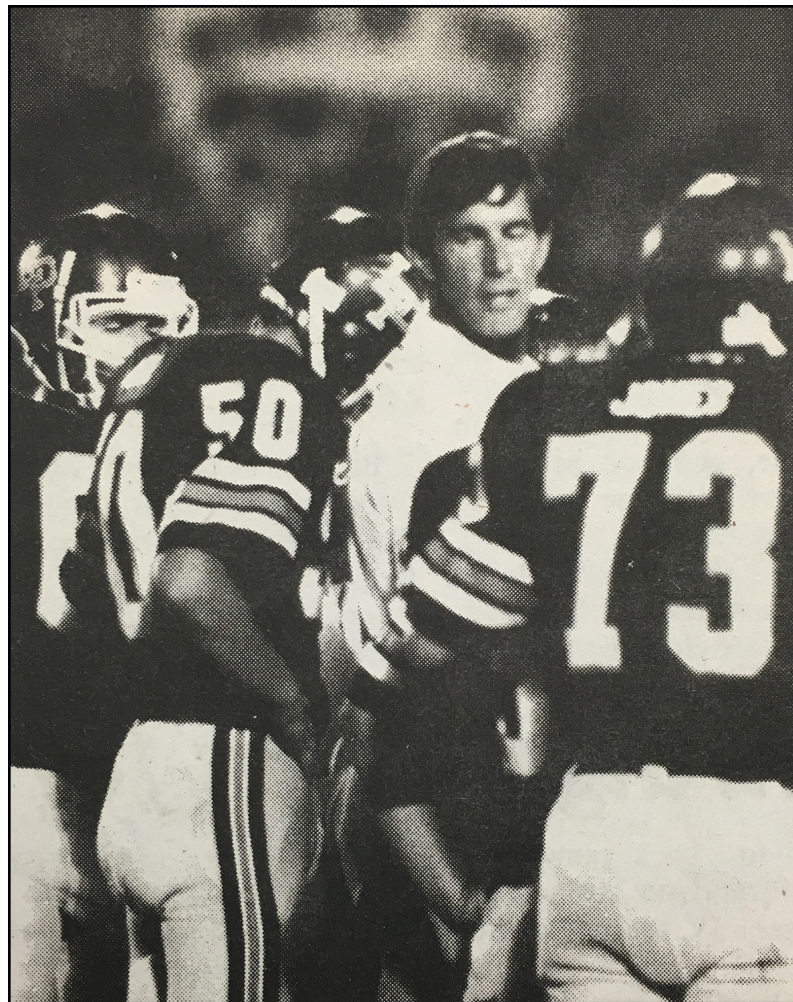
Ken certainly showed the way beautifully and with great distinction. Ken instilled in coaches and athletes the drive not only to be successful performers but to be outstanding representatives of Lewis-Palmer School District. To Ken that means, "Making our community proud by presenting yourself and your team well with good manners, good sportsmanship, and by caring about your teammates on and off the field." Ken showed the way to excellence by treating everyone with respect, by listening intently to all perspectives, and by always putting kids first. In winning seasons, Ken was the team's proudest advocate. In seasons of struggle, Ken remained the same. A coach explains, "Ken believed that athletics were for everyone who wanted to try. Sometimes it was obvious that teams would struggle, and other times there was probably a state champion rolling through. Ken understood

that. When things were down, Ken would always encourage and mentor coaches through these times.” That’s because Ken is passionate not only about winning, but he believes that “high school athletics start and end with the kids. It gives them the opportunity to learn about themselves, their responsibilities to themselves and others. It allows them to contribute to their school and community, and it gives that community a reason to be proud of its kids.”

Truly, Ken showed many the ways to shine, contribute, and collaborate. He couldn’t have done this without the support of his family. He is extremely proud of his three children, Shannon, Kayci, and Guy, all LPHS graduates. Ken smiles when he recalls all those dinners his late wife MB would bring him before games. Together they would sit in his office and share a meal and conversation before he would head out to the field or the gym. He is grateful for all the sacrifices his family made so that he could serve the LPHS family. Ken also expresses appreciation for all the support and encouragement he receives from the new Mrs. Shelley Emry.

In the boisterous world of high school sports, Ken is a quiet giant. He is a man of character. People admire him for his professionalism, compassion, empathy, integrity, and even temperament. Harold Geneen once penned: “Leadership is practiced not so much in words as in attitude and actions.” Mr. Ken Emry’s attitude and actions speak resoundingly and have eloquently guided past, current, and future successes of Lewis-Palmer School District.

By Caryn Collette and Susan Odenbaugh



Coach Ken Emry talks to his players during a winning ball game



Hal Garland

Hal Garland

“Hal Garland was the perfect match for the Lewis-Palmer School District. The words ‘dedicated,’ ‘loyal,’ ‘personable,’ ‘student-centered,’ and ‘problem-solver’ describe his best attributes. Hal understood that all the functions within the school district had a single, driving purpose of accomplishing what was best for kids. He was remarkable in his ability to anticipate areas that might become concerns and to design systems to address those,” states a former LPSD superintendent. Mr. Hugh A. (Hal) Garland made District 38 safer, and those with whom he worked were better prepared to serve children and each other because of his influence.

Mr. Garland was hired in 1999 as director of transportation. In 2006 until his retirement in 2010, he served as director of auxiliary services. His contributions were numerous, varied, and enduring.

As director of transportation, he and his team created a top-notch, service-oriented department which continues to exceed state standards. He developed a bus replacement plan that ensured the safety of the buses for the duration of their use. He saw that buses were outfitted with automatic chains, two-way radios, and video cameras. He directed completion of the Transportation Employee Handbook. He designed a highly effective, ongoing training program for bus drivers and provided advanced certification for mechanics. He led the

implementation of a computerized routing system that improved the reliability of service. According to a former transportation department colleague, “Hal kept the mission of transporting students safely at the forefront. Safety was not just a byword, it was THE word. This translated into an exemplary safety record for the department.”

For his efforts, Hal was selected by the Colorado Department of Education to chair the Annual Administrators Training sessions for six years. Hal served as chairperson of the Pikes Peak Area Transportation Directors Consortium. He was named Transportation Administrator/Director of the Year for Colorado and earned Nationally Certified Transportation Director.

Despite a busy schedule, Hal kept the youngest patrons as his motivation. A student recalls, “When I first met Mr. Garland, I was only five years old. I was nervous about riding a school bus for the first time. Hal took the time to explain the importance of bus safety. He then asked a bus driver to take me around the block on a bus so I wouldn’t be nervous on the first day of school.” This kind of care extended to all. A mother of two LPSD students remembers, “At the time I met Hal, I was a first-time parent in the District, preparing my youngest child to attend

Palmer Lake Elementary. Hal always took the time to explain things to me, such as why schools close on snow days. As a parent, I felt comfort knowing Hal was on the streets ‘testing’ the roads on snowy mornings before allowing the bus drivers to drive our precious children.” Vehicles are certainly a key component of any transportation department, but to Hal Garland its heart and soul were the people. According to a former colleague, “Hal was a transformational leader. He did not dictate what needed to be done; he sought input from those impacted by his decisions and used every opportunity to teach and explain the how’s, why’s, and possible repercussions for every option. Each employee had a voice.”

As director of auxiliary services, he oversaw the transportation, maintenance, and food services departments. He was project manager for the design and construction of the current transportation facility. He established landscaping standards for all District properties. He was a member of the Palmer Ridge High School Planning



New Lewis-Palmer School District Transportation Facility



Transportation Employee Tom Allen and Hal Garland

school resource officer; developed emergency flipcharts and backpacks; instituted pandemic flu procedures; expanded monthly safety drills to include lockdown, tornado, and shelter-in-place; implemented two-way radios to improve crisis communications; conducted tabletop training exercises; developed crisis team concept and pairing of schools for evacuation sites, as well as parent reunification procedures. Hal would be the first to say this was a team effort. He was, however, the leader with vision who brought vitality and direction to the process.

Committee. Hal served as the District liaison for the local YMCA and worked to establish Senior Center programs and lunches.

While LPSD has always worked to keep students and staff safe, Hal Garland refined best practices that remain in place today. Mr. Garland understood and valued the District's mission of providing an excellent education; he knew this could happen only if all associated with this mission were safe. Hal helped restrict open access for school buildings; promoted the addition of a full-time

Then there were the expansive innovations that put LPSD at the forefront of school safety. In 2006, the Monument Police Chief invited Hal to join him at the prestigious Executive Training Course for School District Administrators and Police Chiefs in Washington, D.C. There they learned safety and security practices and how to apply them at home. In 2007, when the U.S. Department of Education published "Practical Information on Crisis Planning," Hal assembled a variety of District personnel to create D38's comprehensive Crisis Plan. Over the next couple years, Hal continued to expand and refine this plan to include how to thoroughly address the four phases of crisis management. He made sure the plan was in compliance with the Incident Command System and the National Incident Management System's recommendations. This meant a plan for coordinating with local, state, and national first responders. In addition, Hal created a District safety and security website to serve as a resource for parents and community members. In 2010, Hal served as the chairperson for the Palmer Divide Public Safety Group, a committee comprised of a variety of safety and security experts. Hal and the PDPSG worked for over a year to bring an Active Shooter Exercise to PRHS. This exercise involved multiple law enforcement agencies as well as numerous fire and ambulance agencies. It provided invaluable training to D38 and local officials. Hal's efforts resulted in LPSD being an early adopter of the now widely used

Safe2Tell program. After years in the making, Hal's final crisis plan was evaluated in 2011 by the Colorado School District Self Insurance Pool. It was deemed, "an excellent overall plan, one of the best ever reviewed."

Hal proudly served his country with the United States Air Force, and he continued to serve his community by assisting victims of the Waldo Canyon and Black Forest Fires. Hal is profoundly grateful to his family for their total support over the years. His work often took him away from home during early morning hours and well into the evening. Hal and his wife Sharen have four children, 11 grandchildren, and two great-grandchildren. Hal's family is his pride and joy.



Hal Garland and Family at Armed Forces Bowl

Hal says of the Lewis-Palmer School District, "I value the excellence and the high standards. It's a place where we support one another. And the people... I'm just so proud of the people." A District principal says of Mr. Garland, "Of course, Hal's accomplishments are significant and lasting, but what is most impressive is WHO Hal is. He is a great human being, filled with kindness and compassion. Hal Garland is a true gentleman."

Hal Garland and the Lewis-Palmer School District, a match as good as it gets.

By Caryn Collette

Craig Ketels

"If I had a time machine, the first place I'd go back to is high school jazz band with Craig Ketels," says a former student. Another former student explains, "Did Mr. Ketels produce fantastic music ensembles during his numerous years in D38? Without a doubt, which is clear from his countless national trips, Cavalcade Awards, and Honor Band participants, but his impact on students and the community as a whole has been so much more consequential than that. He created an environment in which teenagers were held to higher expectations, standards he knew they were capable of achieving. He helped us to grow in both accountability and work ethic. He motivated us to improve not only our musical skills, but also our maturity, and collaborative abilities. Every year he took a group of individuals and built a unit that could listen, flow, anticipate, and create something incredible as one entity. All the while, Mr. Ketels created family. He was an incredible mentor whose inspiring lessons have and will continue to influence my life and the lives of many others."

Mr. Craig Ketels spent his entire career - all 27 years plus - serving the students of Lewis-Palmer School District. He began his career as a student teacher in the spring of 1980 and began teaching that fall. He taught instrumental music, vocal music, and drama at both the high school and the middle school. As the District and the size of Mr. Ketels' program grew,



Craig Ketels

new staff members were added, and Mr. Ketels focused on the LPHS band program. Mr. Ketels became the LPHS activities director in 2004. Three years later, he retired from education - but not entirely.

After years of teaching trumpet lessons and providing band clinics, he returned to LPHS during the 2008-2009 school year as a half-time assistant band director. Following 2009, Mr. Ketels was not finished serving students. He continued working for the District as an activities and substitute bus driver. A former student recalls, "I was continuously amazed by his dedication to the District's music program. He frequently drove the bus when we traveled to clinics and festivals. Mr. Ketels always made a point of spending time with us and listening to our performances. It made me happy that Mr. Ketels never ceased to care about music or the students studying it."

"If I had a time machine,
the first place I'd go back
to is high school jazz
band with Craig Ketels."

- Former Student

During his 24 years as the LPHS band director, Mr. Ketels' work and dedication placed the LPHS band program among the top music programs in the state and nation. Under Craig's direction, the LPHS band program grew from one concert band in 1980 to four concert bands and



Mr. Ketels with 1995-1996 Jazz 1 Band

two jazz bands in 2004. LPHS bands performed at the Colorado Music Educators Association (CMEA) clinic/conference ten of the last fifteen years. Five of his bands were selected to perform at the Bands of America National Concert Band festival within ten years. This is still a national record. Countless numbers of his students have represented LPHS in regional and state level Honor Bands.

Ketels is still in high demand as a clinician, judge, and speaker, where he offers advice to music educators. His program and teaching are still used as a model of excellence for others. Many of his former students have entered the music profession as teachers and performers.



Craig Ketels and Colorado Springs Mayor Makepeace

Anyone who knows public school music in Colorado knows of the Lewis-Palmer High School band program and Craig Ketels. Anyone who knows Craig Ketels knows that his tireless energy is exceeded only by his love of young people and his love of music. In 2005, Craig was inducted into the CMEA Hall of Fame, and in

2006, Mr. Ketels was inducted into the Colorado Bandmasters Association Hall of Fame. Craig is one of just 40 CBA Hall of Fame members in the organization's 50-year history. A former colleague notes, "Craig believed in collaboration to expand experience and the program. He worked with his counterparts in other school districts to create joint events that enhanced the program for all students and demonstrated that we could not only compete, but also collaborate across school districts. In doing this he improved the environment for students as well as music educators in our area. Craig's opinions and advice were used by CMEA and CBA to help improve the quality of music education in our state. When Craig was invited to present a clinic at a music conference in Chicago, his presentation was so successful and well-attended that time was created in the following day's schedule for Craig to present the clinic again. The second clinic was equally well-attended by a 'standing room only' audience, and this was because other directors from all over the country wanted to learn from a band director from Lewis-Palmer High School in Monument, Colorado." He was a marketing force for the school district. Organizers at a prestigious national band competition said that the LPHS band was in the top 1% of bands to ever play there. Because the music program was so strong, these efforts helped raise awareness of all the positive things that were happening in D38. This helped attract other outstanding band directors who have continued to build on and expand these excellent programs."

While Craig was passionate and intense about making his bands exemplary, he was always up for a little fun. He surprised his students by driving his motorcycle into the band room. Then, there were those good-natured surprises his students had for him. A parent recalls, "One day students completely removed all Craig's office furniture and replaced it with straw and chickens. On

another occasion, his office was filled to the ceiling with crumpled up newspapers. The students learned something from band discipline because they always checked with school authorities first and cleaned up afterwards.”

As LPHS activities director, Craig made it his goal to uplift and support staff and to provide all students a place to belong. In addition to the regular duties of activities director, such as sponsoring student council to planning dances, Craig organized positive experiences such as badminton tournaments designed to bring all students together and to generate school pride. He also provided lunches and BBQs for staff.

Craig is grateful to his family for allowing him to go “full blast at school.” His wife Mary is a retired LPSD teacher. His children Amy and Mike are both LPHS graduates. He greatly admires each of them for following their own unique passions.

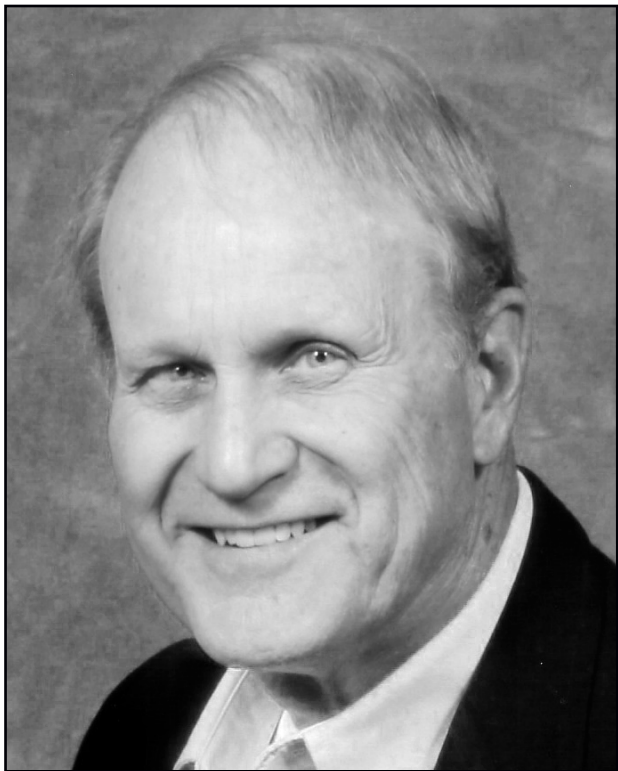
Craig is renowned for his excellence in music education. So, too, is he admired, respected, and beloved for enriching the lives of his students whose lives are richer, their hearts fuller, and their spirits stronger because of Craig Ketels. As one student says, “Mr. Ketels gave us a safe place where we learned about music, how to be part of a community

and work toward a common goal, and we learned to be leaders. He created a community that extended beyond age and ability. The lessons I learned from Mr. Ketels I’ve taken with me from high school into college into my career, and now into my family. I am forever thankful for Mr. Ketels’ passion for music and for kids.”

By Caryn Collette and Butch Eversole



The Monument Hill Quintet



Jerry Parsons

Dr. Jerry (George) Parsons

"In Pursuit of Excellence, We Care."

This concise belief statement has long been a trademark for Lewis-Palmer School District. More than a catchy slogan, it is the essence of the District's mission. Dr. George E. "Jerry" Parsons created this statement. Moreover, he inspired the community to bring it to fruition, and he devoted his career to bringing these words to life for LPSD.

Dr. Parsons was hired as the principal of Palmer Lake Elementary School in 1973. In 1980, Jerry became the principal at the newly formed Lewis-Palmer Elementary School while PLES underwent renovations. In the role of principal, he transformed not only these schools but the communities they served. In 1989, Dr. Parsons accepted the position of LPSD business manager, revitalizing a floundering budget. When he retired in 1997, Dr. Parsons' impact reflected his commitment to personal and professional excellence.

Dr. Parsons began his career as a secondary teacher. While earning his Doctorate Degree at the University of Northern Colorado, he shifted his educational focus. During this time, he concluded that crucial values were formed during the elementary school years. He wanted to be part of that, so he applied for the principal position at PLES.

One of his first accomplishments was creating a school library. Then students did not have to walk to the town library. He was insistent that this library be richly stocked and professionally managed for students and staff. It soon became the heart of the school. He helped obtain a Reading is Fundamental grant, a program that for years put free books into the hands of every elementary school student.

When Jerry arrived at PLES, there were very few volunteers. With his guidance, the volunteer program flourished. He invited a variety of people to contribute in meaningful ways to the school's success. He rallied these new volunteers to paint Disney character murals on the walls of the once dreary lunchroom and to build playgrounds out of telephone poles and tires. He strongly believes that schools and community members need to work together for the good of children. A former school board member noted, "Jerry has drawn upon resources very wisely and developed a volunteer cadre of over 100 parents, grandparents, and patrons (many without children in school). This has not only improved the educational quality, but it has accomplished a much more subtle (but equally important) goal of community awareness and support." A former teacher says, "We, staff, students, and the community, were a family, and Jerry was our leader." Jerry believes that to lead effectively one must communicate well, recognize and value others and their contributions, be willing to make tough decisions, and, most of all, love what you do.

Jerry demonstrated a love for learning and community, and he believes that learning and building community are often best

accomplished outside of the school building. He organized and participated in numerous tree plantings, outdoor field trips, and research projects at local lakes, but his eyes really light up when he talks about the ice skating adventures. Every winter when the temperatures dropped, Jerry would wake up in the middle of the night, trek to the Palmer Lake tennis courts, hook up the fire hose to the nearby hydrant, and flood the courts. By sunrise, the tennis courts had become an outdoor skating rink. Every PLES student had



Jerry Parsons, District Business Manager

Lewis-Palmer Principal Honored

Lewis-Palmer Elementary Principal Jerry Parsons was one of 58 elementary and middle school principals across the county cited as outstanding members in their field by Education Secretary William Bennett and the National Association of Elementary School Principals. The award was presented to Dr. Parsons in Washington, D.C. on October 17, 1986.



a pair of ice skates, many provided by the PTO and community members. These skates hung on nails in the hallways of PLES, and on chilly days throughout the winter, students would head to the rink with teachers, neighbors, and Dr. Parsons. Parents joined the fun and provided the hot chocolate.

While at PLES, Dr. Parsons launched a pilot character program that became a model for schools throughout the United States. A 1978 Tribune article reads, "Under the leadership of an imaginative young principal, [...] the kindergarten through third grade students are learning the value of characteristics that people admire most - honesty and integrity."

In 1980, with honesty and integrity, Jerry merged the Palmer Lake Elementary staff with the Lewis-Palmer Elementary staff to create the District's K-5 Lewis-Palmer Elementary School, where he continued working with teachers pioneering innovative programs in science, gifted and talented education, and special education. He helped facilitate and articulate K-5th and 5th-8th grade transitions. Jerry was especially forward thinking when it came to technology. He used his expertise in this area to create the most well-developed computer labs and computer programs for elementary schools in the area. He understood the trepidation that often goes with sweeping changes and provided plenty of support for staff and parents as they familiarized themselves with this new direction.

While Dr. Parsons' contributions are varied and numerous, he is especially proud of the 100-plus people he hired. Says Jerry,

"We were a family of educators. No one was more important than anyone else. Together we did the job."

In 1989, Jerry took over as the District business manager. In this position, Dr. Parsons was part of a team that prudently managed rapid enrollment growth in the Tri-Lakes area, resulting in the construction and renovation of four schools. He converted an outdated accounting system to a more efficient computerized system at no cost to the District. When Jerry became business manager, the District's general fund balance was quite low. The goal with this budget is to maintain a healthy balance regardless of lean or prosperous economic times so that educational services remain consistent and appropriate. By the time Jerry left the position, he managed to increase the percent of revenues by a healthy 33%, this during a period of strenuous demands of the budget. This was not a numbers issue to Jerry; it was yet again about providing LPSD students with a superior education.

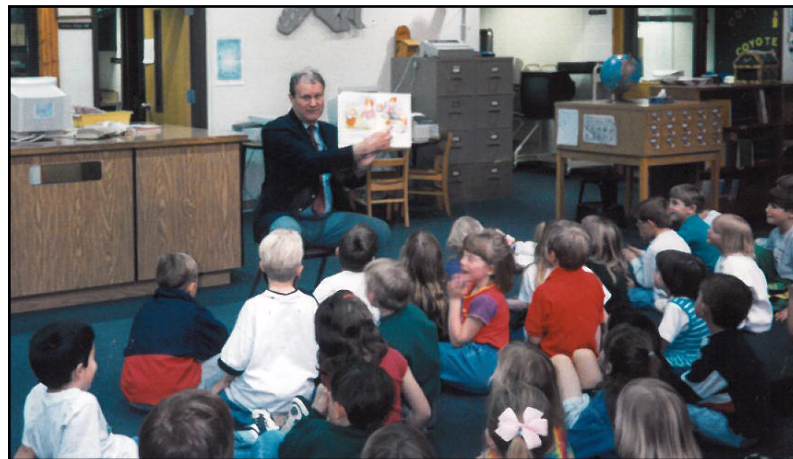
Dr. Parsons was active in numerous state and national organizations and received numerous awards. Some of these include the Tri-Lakes Kiwanis Exceptional Service Award, the Colorado Association of School Executives Elementary Principal Award for Significant Contributions to the Profession, and the National Distinguished Principal Award. He also earned several awards for his accomplishments as business manager.

When Jerry initially arrived in Palmer Lake with his wife Dale, she was a bit dubious about the town's remoteness, but the Parsons quickly acclimated and have happily called Palmer Lake home for

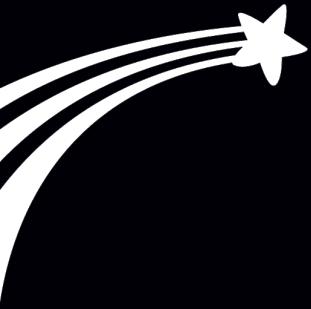
over 40 years. They are the proud parents of Sherri and Bob, both Lewis-Palmer High School graduates, and Jerry and Dale thoroughly enjoy their ten grandchildren.

A former school board president relates, "Jerry had the keen ability to direct the development of our community's most valuable resource - our children. Jerry has achieved this by setting high goals for himself, his staff, and our students. He has led the way by example." Always true to his word, Jerry Parsons not only pursued excellence, he achieved it, and he did so by wholeheartedly caring for his colleagues, his community, and the children he always put first.

By Caryn Collette



Jerry Parsons, LPES Principal, reads to students



*for Significant Contribution to the
Success of the District and its Students*

Lewis-Palmer School District #38
146 Jefferson Street, P.O. Box 40, Monument, CO 80132
(719) 488-4700 • info@lewispalmer.org • www.lewispalmer.org