

REIMAGINING LRSD



LITTLE ROCK
SCHOOL DISTRICT

2023-2024 COMMUNITY REPORT LITTLE ROCK SCHOOL DISTRICT

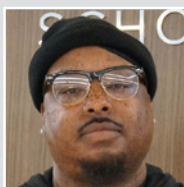


www.LRSD.org





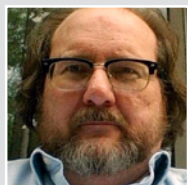
Michael D. Mason
Zone 1
Michael.Mason@lrstd.org



Osyrus Bolly
Zone 2
Osyrus.Bolly@lrstd.org



Evelyn Hemphill Callaway
Zone 3
Evelyn.Callaway@lrstd.org



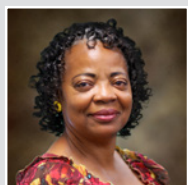
Tony Rose
Zone 4
Tony.Rose@lrstd.org



Anna Strong
Zone 5
Anna.Strong@lrstd.org



Vicki Hatter
Zone 6
Vicki.Hatter@lrstd.org



Norma Johnson
Zone 7
Norma.J.Johnson@lrstd.org



Greg Adams
Zone 8
Greg.Adams@lrstd.org



Joyce Walker Wesley
Zone 9
Joyce.Wesley@lrstd.org

The Little Rock School District (LRSD) Board of Education is comprised of nine members. While the Board sets policy that governs the District, Superintendent Dr. Jermall Wright implements the Board's vision, making day-to-day decisions about educational programs, spending, staff, and facilities.

Partnerships between school, home, and the community are essential to the District's success. Parents and community members are encouraged to remain engaged through active participation at schools, by watching/attending meetings, as well as providing input.

LRSD hosts two regularly scheduled monthly meetings on the second and fourth Thursday at 5:30 p.m. Stakeholders may provide public comment during any meeting where action items are on the agenda.

Stakeholders interested in following board meetings are invited to check out the Diligent platform. Diligent is designed to enhance engagement and allow stakeholders to receive notification about meetings and quickly navigate through recorded meetings with customized settings.

Watch Board/Public Meetings: www.LRSDLive.com

Public Comments: www.LRSD.org/lrstdpubliccomments

Themes that will be embedded in LRSD's new Strategic Plan:



Affirming
School
Cultures

THEME
A



Meaningful
Student
Learning
Experiences

THEME
B



Valued and
Equitable
School
Options

THEME
C



Excellence
In Our
Talent

THEME
D

Message from Superintendent Dr. Jermall Wright

Dear Little Rock School District Families,

What an inspiring time to be part of the Little Rock School District community! Together, we are on a mission to #ReimagineLRSD as a world-class school district where ALL students graduate fully prepared for college, careers, and beyond. Our shared vision is taking shape as we focus on key areas outlined in our Strategic Plan: teaching, learning, students, relationships, service, culture, and community engagement. Every step we take brings us closer to transforming our district into a model of excellence, and we are excited for the future we are building together.

Steadfast support from the Little Rock community has been a driving force behind our progress. Your commitment to LRSD's success is not just evident; it's integral. From corporate and business partnerships to faith-based and civic collaborations, your involvement makes our district thrive. We value your trust and are determined to continue taking bold and meaningful actions. Together, we can achieve our goal of providing world-class education for all students.

In the following pages of this community report, you will find several examples of progress we've made and continue to make together. Here are a few other notable accomplishments to highlight:

- Schools recognized by the U-of-A's Office of Education Policy for Outstanding Academic Performance and for Beating the Odds
- LRSD schools named among top performers by US News and World Report
- Historically high graduation rate - 82%; Class of 2024 earned more than \$26 million in scholarships
- Improved overall literacy rate; most improved proficiency rate to date
- Highest gains in literacy rate for bottom quartile students to date, removing District from state oversight in literacy
- Award-winning art students/programs
- Championship football and basketball teams
- Grand openings for new Dr. Marian G. Lacey K-8 Academy and Central Fieldhouse; renovated Rockefeller pre-K site
- Ongoing construction of the new Central Science Wing and Pinnacle View High School
- Continued building renovations resulting from the extension of LRSD millage (new windows at Dunbar)
- Recipient of nearly \$52M in grant funding, including a new Magnet School grant
- Pursuit of designation of Central High as a World Heritage Site
- Approximately 250 LRSD educators received more than \$800,000 in State Merit Incentives

We recognize that your decisions about your children's education are among the most important. Thank you for choosing LRSD. We know families have options, and we are committed to providing exceptional opportunities that ensure you continue to see LRSD as the best choice for your child's future. Your trust fuels our drive to do better daily, and we are dedicated to living up to that trust.

As I've said before and will continue to emphasize, Little Rock cannot be a great city without a great public school district. Let's work together to #ReimagineLRSD and create brighter futures for every student. Thank you for your partnership and being part of the "One Team, One Dream, One LRSD" family!

Sincerely,

Jermall Wright, Ed.D.
Superintendent of Schools



NEW ENHANCED FACILITIES & PROGRAMS

Opened This Year:

Rockefeller Early Childhood Center



Dr. Marian G. Lacey K-8 Academy



Central High Athletic Building



Coming This Spring:

Central High Science Wing



Coming 2027:

Pinnacle View High School



**Hall-West High School of Innovation:
Medical Partnerships & Pathways –
Preparing Students for Bright Futures!**

Volunteers in Public Schools - ViPS

Unleashing the Power of Community Through Volunteering



Enjoy giving back to your school community? If so, you're encouraged to sign up for LRSD's Volunteers in Public School's (ViPS) program. This impactful program helps strengthen the connection between schools and the community. Through ViPS, parents, neighbors, and other community members contribute their time and skills to support our schools. Whether it's tutoring, assisting teachers in the classroom, organizing extracurricular activities, or providing additional resources, volunteers play a crucial role in enhancing the overall educational experience for our children.

ViPS marked its 50th year of service in 2023, and thanks to the commitment of the community, students and schools continue to benefit from individual volunteers and Partners in Education (PIE). PIE representatives include businesses and faith-based organizations who donate time, talent, and financial support to provide mentoring, after school programs, books, classroom supplies, job shadowing, internships, and incentives for students and teachers. More than 239 organizations serve as partners in education.



Volunteer recruitment is ongoing with a special effort to solicit presenters for the Arkansas Scholars program. ViPS coordinates this statewide program for LRSD to assist District 8th graders with a successful transition to high school, 9th grade in particular. Community members interested in presenting the Arkansas Scholars program should call the ViPS office at 501-447-ViPS (x 8477) for training information and scheduling.

LRSD is fortunate to have an incredible group of volunteers and partners in education who provide daily support to our students and schools. It's a fantastic opportunity to help build a stronger, more nurturing school community.

www.LRSD.org/ViPS



LRSD VIRTUAL ACADEMY



TAKING EDUCATION
TO NEW HEIGHTS



EMPOWERING EDUCATION ANYTIME, ANYWHERE WITH LRSD'S VIRTUAL ACADEMY

The LRSD Virtual Academy aims to provide students and their families with an equitable alternative to on-site learning. Full-time virtual students receive asynchronous content delivered online, while hybrid students alternate between one online instructional day and one on-site, face-to-face instructional day. All students are required to take state assessments and other screening exams in person.

Certified LRSD teachers closely monitor students' progress, participation, and engagement in the Imagine Learning Edgenuity Courseware, a DESE-approved digital provider. Virtual academy students have significant flexibility over the pace and location of their learning. However, it is recommended that students dedicate at least three hours per week per course to the platform. All coursework must be completed by the last day of each semester.

The grade-level general education curriculum is developed by Imagine Learning Edgenuity, with all units of instruction aligned to Arkansas Academic Standards.

For additional information about the program, visit: www.LRSD.org/Virtual

It's everything LRSD, in your pocket.



Download the **Little Rock School District, AR** app from the iOS App Store or Android Play Store and enable Notifications.

Elevating Connections: Thrillshare App Enhances LRSD Communication

We're excited to share an update about LRSD's communication system and how it continues to enhance our connection with you. Since launching the Thrillshare App and website through Apptegy, we've streamlined how we keep you informed and engaged. These tools are now integral parts of our communication strategy, providing a more unified and user-friendly experience.

One standout feature of this system is the "Rooms" tool. Designed with privacy and convenience in mind, "Rooms" enables direct communication between teachers and parents. This feature simplifies staying connected and accessing essential information—all within the same app. Many schools have already adopted "Rooms," and we're gradually rolling it out to more campuses through ongoing training sessions. Your school's administration and teachers will notify you when they're ready to make the switch.

The Thrillshare App also brings all the essentials to your fingertips, including phone, text, email messaging, calendars, and more. It's designed to be your one-stop hub for everything LRSD-related, ensuring easy access to important updates and resources.

While our website address remains unchanged, the LRSD App now features a fresh look with a white background and blue torch icon. If you haven't already, we encourage you to download the app today and explore its valuable features. It's never been easier to stay informed and connected with LRSD—all from the convenience of your mobile device.

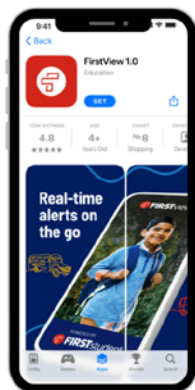
Download the New App Now!

Android: <https://bit.ly/3KocYoe>

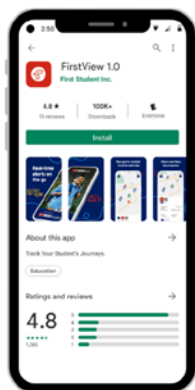
iPhone: <https://apple.co/3rZpxzW>

Thank you for being an essential part of the LRSD community. We're committed to keeping you informed and engaged as we continue to evolve and improve our communication systems.

Where's My School Bus? FirstView Launches New and Improved GPS Tracking for Student Transportation



Apple Devices

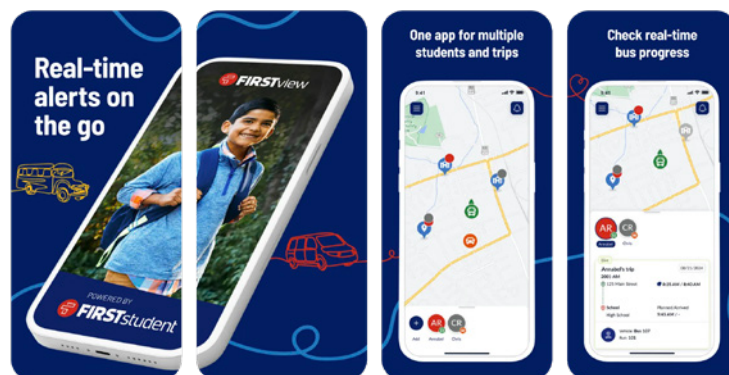


Android Devices



Getting kids to and from school just got a whole lot easier and more secure! FirstView, a trusted platform for tracking school buses and student transportation, has rolled out its latest version, FirstView 1.0. Since its launch in 2017, FirstView has helped parents keep tabs on their kids' bus rides with a mobile app and has given schools a dashboard to monitor their entire fleet. The new update brings a fresh design, easier-to-use technology, and more advanced tracking features, including support for alternative transportation services like vans and smaller vehicles.

With FirstView 1.0, LRSD parents can track their child's ride in near real-time using a simple mobile app. Schools and districts also benefit from a powerful dashboard that gives staff an up-to-the-minute look at where every vehicle is and how it's running. Whether it's a regular school bus or a different type of vehicle, FirstView ensures families and schools stay connected, making every trip to and from school safer and less stressful. For information, visit www.LRSD.org/firstview



Customer Service More than Just a Catchphrase – LRSD Partners with K-12 Insight to Take it to the Next Level!

Let's Talk! Contact us

Bold steps being taken by the Little Rock School District to enhance the connection with families, staff, and the community through an exciting new partnership with K-12 Insight. This collaboration aims to take the customer service game to the next level by implementing innovative tools and strategies to ensure every interaction with LRSD is seamless, efficient,

and meaningful. Through K-12 Insight's cutting-edge technology and expertise, the District will streamline communication, gather valuable feedback, and respond more effectively to the needs of its stakeholders.

The initiative will include an advanced platform for managing incoming questions and concerns, data-driven insights to improve responsiveness, and ongoing training for staff to ensure every stakeholder feels heard and valued. The community may access K-12 Insight "Let's Talk – Contact Us" button at the bottom of the District's website – just click on the yellow tab.



LEADERSHIP • PUBLIC SERVICE

FOREIGN AND SIGN LANGUAGE

Get Ready for a Global Academic Adventure at Dr. Martin Luther King, Jr. Leadership and Language Magnet Academy!

At Dr. Martin Luther King, Jr. Leadership and Language Magnet Academy, our students are actively engaged in an exceptional year of language exploration and leadership growth! By the end of this school year, they will have experienced all three language options—Mandarin, American Sign Language (ASL), and Spanish—preparing them for even greater success in the following school year. In Mandarin class, led by Ms. Haifeng Xu, students learn greetings, songs, and zodiac signs and eagerly prepare for a vibrant Chinese New Year celebration.

American Sign Language lessons have students mastering the alphabet, their names, and essential phrases, while Spanish classes immerse them in Hispanic customs, traditions, and greetings. Leadership development is a key focus through the “Leader in Me”



program, where students are creating mission statements, practicing the “7 Habits,” and participating in meaningful morning meetings.

To top it off, the newly formed Student Council is ready to make an impact, with elected leaders joining the school’s Leadership Team for an exciting second semester. Stay tuned for more updates on our students’ incredible journey!

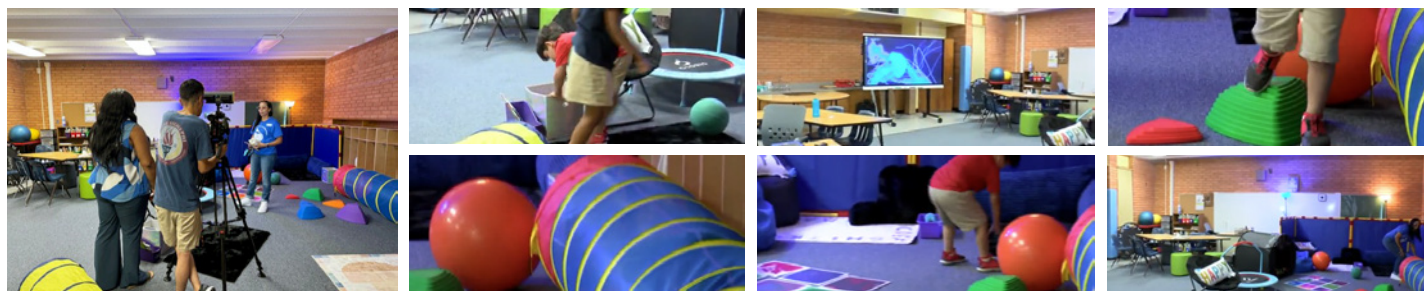
Welcome to The Eagle’s Nest: Where Inclusion and Growth Take Flight at Western Hills!



Western Hills is proud to be the home base for three dedicated Autism classrooms and a state-of-the-art Sensory Room lovingly known as The Eagle’s Nest. These classrooms are led by certified special education teachers and supported by two paraprofessionals each, creating a nurturing and supportive environment. Utilizing the STAR Curriculum, rooted in Applied Behavior Analysis (ABA) therapy, students receive tailored instruction while also joining their peers in general education classrooms for Music, Art, PE, Library, and Counseling.

This inclusive approach fosters understanding and connection among all students, building a community where differences are celebrated. Eagle’s Nest students also shine in school-wide events like the annual Books on Parade and Polar Express Day. Supported by both building and District Special Ed teams, this program exemplifies the heart of Western Hills’ commitment to growing opportunities for every learner.

We can’t wait to see The Eagle’s Nest soar to new heights!



Give Your Student a Head Start with Early Childhood Education

Set your child up for success by enrolling them in pre-K today! Did you know that LRSD is the largest provider of public preschool? Students who attend LRSD preschools are not only better prepared for kindergarten, but they have also historically outperformed their peers in every skill area compared to those who did not attend LRSD pre-K.

While LRSD's pre-K program encourages social development and provides ample playtime, it is far more than a daycare service. Every classroom is led by certified teachers and credentialed assistant teachers, who actively engage students in developing critical, age-appropriate foundational skills. This dedication ensures that young learners receive high-quality instruction, building a strong foundation for their educational journey and future academic success.

Pre-Kindergarten classes are located throughout LRSD in both elementary and early childhood centers:

Three- and Four-Year-Old Classes

Chicot ECC
Geyer Springs ECC
Romine ECC

Four-Year-Old Classes

Fair Park ECC

Six-Week – Four-Year-Old Program (Newly Renovated Site)

Rockefeller ECC

***Monthly fee for children six weeks to two years
(vouchers accepted); no fee for three- four-year-old children

Help your child develop a love for learning and ensure that he/she is well-prepared by enrolling in LRSD pre-K today:

www.LRSD.org/Pre-K



Scholars Reception

11-11-2024

CONGRATULATIONS
*2024 National Merit Semifinalists,
Commended, and Principal's Scholars!*



METRO SCHOLARS HANDIWORK IMPACTING BROADER COMMUNITY



Little Rock School District scholars attending Metropolitan Career Technical Center (Metro) are literally using their handiwork to impact the community. Dontavious Johnson, Matthew Bradford, and Leovardo Huerta joined forces with the Alpha Kappa Alpha Sorority (AKAs) in a unified effort to enhance literacy in the Morrilton community. Together, they built and donated an outdoor library to the city, a testament to their shared commitment and dedication to supporting reading.

Metro scholars are actively involved in career and technical student organizations (CSTO) SkillsUSA, where they hone their technical, personal, and workplace skills to support student success. Johnson, Bradford, and Huerta recently won a gold medal at the SkillsUSA State and Leadership Competition in Hot Springs and will compete at the SkillsUSA National Leadership and Skills competition in Atlanta, Georgia, June 24-29.

The outdoor library they recently constructed was part of a community service project undertaken with the sorority to serve a much broader purpose. While initially designed for children, it will ultimately provide a space where individuals of all ages can access free books and contribute books they no longer need. This initiative aims to serve as a beacon of hope, promoting the joy of reading to everyone, especially those who may not normally have access to books and wish to enhance their literacy skills.

The scholars and their teacher expressed their appreciation to Alpha Kappa Alpha Sorority, a sisterhood of more than 355,000 members across global chapters.

"The AKAs are an exceptional organization that focuses on empowering communities and advocating for social justice," said Metro construction instructor Toyoshima Gray.

"This partnership has been a constant source of inspiration for us. The AKAs have substantially contributed to this project by providing the resources and support to effect positive change. The outdoor library project is a testament to their influence and mission to equip individuals with tools and encouragement to make a difference. We are proud that our scholars were able to be a part of this powerful project," Gray added.

EIGHT LRSD STUDENTS WELCOMED TO UA LITTLE ROCK AS DONAGHEY SCHOLARS



The University of Arkansas at Little Rock is welcoming eight former LRSD students to the Donaghey Scholars Honors Program for the 2024-25 academic year.

The new cohort of Donaghey Scholars represent the best and brightest students at UA Little Rock. Members receive a financial package that covers full tuition and fees, a stipend, financial assistance for a study abroad program, a housing subsidy, and a new laptop.

The admissions process is highly competitive. The most promising applicants are invited to campus for an interview. Admission decisions are based on academic record, test scores, extra curricular activities, intellectual curiosity, recommendation letters, admissions essays, and an interview with the program directors, faculty, and current and past members of the Donaghey Scholars Honors Program.

The program features an interdisciplinary core curriculum that emphasizes critical thinking, writing, discussion, and project-based learning that engages with the city of Little Rock.

#Reimagining LRSD - New Facilities: PINNACLE VIEW HIGH SCHOOL



The Little Rock School District marked the construction of Pinnacle View High School with a celebratory “shovel ceremony” at its Ranch Drive location in northwest Little Rock. The new high school, set to open for the 2027-28 school year, will serve up to 1,200 students in grades 9–12. The event, attended by district leaders, students, and community members, highlighted the significance of providing a complete educational pathway for west Little Rock families, from elementary through high school.

Designed by Lewis Architects Engineers and built by Baldwin & Shell Construction, the 320,000-square-foot campus will include seven wings, 24 classrooms, 44 specialty rooms, and nearly 1,000 parking spaces. The school will sit next to Pinnacle View Middle School, creating a cohesive educational hub for the area.

The project is funded by a 2021 tax-millage extension, which Wright credited for making the vision a reality. District leaders also highlighted the collaborative effort of parents and community members who lobbied for years to establish schools in the growing northwest section of the city.

Speakers at the event included students who will benefit from the new school and longtime advocates like Kelly Ann Thornton, who praised the collective efforts of families over the years. Thornton expressed excitement about the school's opening and encouraged continued advocacy for future needs in the district.

Pinnacle View High School represents the district's commitment to providing exceptional public education and fulfilling its promise to families in west Little Rock.

West Little Rock Education Pipeline — Kindergarten to Graduation



DON ROBERTS ELEMENTARY



PINNACLE VIEW MIDDLE



PINNACLE VIEW HIGH

LRSD and First Security Bank Celebrate \$100K Milestone in In-School Banking Program

The Little Rock School District (LRSD) and First Security Bank are celebrating a significant milestone in their innovative in-school banking partnership, with student-managed deposits surpassing \$134,000! This unique program, designed to teach students financial literacy skills, has become a cornerstone of real-world learning in LRSD schools. Through hands-on experience, students are being taught the fundamentals of saving, budgeting, and responsible money management while developing financial independence that will benefit them for years to come. They are also getting exposure to career options in the banking profession and building customer service skills.

Spearheaded by First Security's Andrea Lewis, bank representatives work closely with LRSD students and staff to provide mentorship and support, making financial education both engaging and meaningful. This will mark the 8th year of the partnership with school “branches” at Stephens, JA Fair, Washington, and Gibbs elementary sites. The \$100K achievement is a testament to the program's success. Together, LRSD and First Security Bank are building brighter futures, one deposit at a time!



LRSD PARTNERS WITH BAPTIST HEALTH COLLEGE TO LAUNCH LPN PROGRAM FOR HIGH SCHOOL STUDENTS



Baptist Health College Little Rock

The Little Rock School District (LRSD) is excited to announce a new partnership with Baptist Health College Little Rock, expanding student career opportunities through a Licensed Practical Nurse (LPN) program. In collaboration with the Metropolitan Career Technical Center, the program allows students from six area high schools to earn healthcare certifications, gain hands-on clinical experience, and graduate workforce-ready.

Shameka Montgomery, Director of Career and Technical Education for LRSD, highlighted the collaboration's life-changing impact. "This partnership is a game-changer. Our students now have the chance to earn a diploma, a college degree, and

an LPN license—all before they even turn 18," Montgomery said. "We thank Baptist Health for their dedication and the many individuals from both organizations who worked tirelessly over the past two years to make this vision a reality. Programs like this make it possible for students to explore their futures without financial burden." Montgomery added that the inaugural cohort includes 14 students from high schools across the region, and many of these students began with a paid summer internship supported by the City of Little Rock.

Metropolitan Career Technical Center was awarded a \$192,158 grant from the Office of Skills Development, a division of the Arkansas Department of Commerce, which pays the fees for participating students to attend the LPN program at no cost.

The LRSD-Baptist Health LPN program exemplifies how innovative partnerships can create new opportunities for students, strengthen the workforce, and foster a stronger, healthier community.

Little Rock Central High's Dr. Mary Maris Receives Prestigious Presidential Award for Excellence in Mathematics and Science Teaching



The Little Rock School District congratulates Dr. Mary Maris of Little Rock Central High School, who was selected to receive the Presidential Award for Excellence in Mathematics and Science Teaching (PAEMST).

The PAEMST program, administered by the National Science Foundation (NSF) on behalf of the White House Office of Science and Technology Policy, honors outstanding teachers for their significant contributions to science, technology, engineering, and mathematics (STEM) education. As part of this national honor, she received a certificate signed by President Joe Biden, a \$10,000 award from NSF, and the opportunity to attend an awards ceremony in Washington, D.C.

Dr. Maris' commitment to encouraging innovation and critical thinking in the classroom leaves a lasting impact on her students and colleagues. Her leadership as Dean of the Science Department is instrumental in advancing STEM education at Central High School.

"The Central High School family is so proud of Dr. Maris," said Nancy Rousseau, Principal of Little Rock Central High School. "Her passion for science education and her ability to inspire her students exemplifies what it means to be an outstanding educator at our school."

A highly regarded educator, Dr. Maris earned the title of LRSD's Teacher of the Year in 2017. She also plays a key role in overseeing the construction and development of the new state-of-the-art science wing at Central. Her dedication continues to inspire the next generation of scientists and math scholars.

For more information about the PAEMST program or details on the nomination process, visit paemst.nsf.gov.

Central High School Basketball Champions

FINAL

6A GIRLS STATE CHAMPIONSHIP



58



40



FINAL

6A BOYS STATE CHAMPIONSHIP



63



55



Go Tigers!!!

Huge cheers to the Central High School
GIRLS AND BOYS Teams for clinching
the 6A State Basketball Championships!

Parkview High School Football Champions



5A STATE FINALS

FINAL

21



FARMINGTON
CARDINALS

61



PARKVIEW
PATRIOTS



Go Patriots!!!

Huge cheers to Parkview High School
for clinching the 5A State Football Championship
FOR THE THIRD CONSECUTIVE YEAR!

We are waiting on you!



LR SOUTHWEST MAGNET HIGH SCHOOL

EARLY COLLEGE PROGRAM

LR Southwest Students ... begin
your road to success by
starting college while
in High School!



For complete program details,
visit www.LRSD.org/LRSW-Early-College

Little Rock Southwest High School to Launch Innovative Early College Program

The Little Rock School District is thrilled to announce an exciting new opportunity for students at Little Rock Southwest High School! Starting in the 2025-2026 school year, students will have the chance to graduate not only with a high school diploma but also with an Associate's Degree, thanks to a forward-thinking early college program.

This program, made possible through partnerships with local colleges, is designed to give students a head start on their academic and professional futures. By taking college courses while still in high school, students can earn credits that count toward both their high school graduation and a college degree.

How It Works

The early college program is open to students who meet the academic requirements for admission to the partner colleges. Participants will take college-level courses, which are offered at a significantly reduced cost. These courses allow students to gain valuable experience navigating higher education while still benefiting from the support systems of high school.

A Game-Changer for Students and Families

This initiative represents a transformative opportunity for students and their families. Graduating with college credits — or even an Associate's Degree — can significantly reduce the cost of attending college after high school. It also provides a competitive edge for students as they transition to higher education or the workforce.

Beyond the financial and academic benefits, the program equips students with the skills and confidence needed to succeed in college. It also supports the district's mission to prepare students for lifelong success by providing access to innovative and impactful educational experiences.

A Vision for the Future

The early college program at Little Rock Southwest High School is a shining example of the district's commitment to empowering students through education. By promoting partnerships with local colleges and creating pathways to higher education, the district continues to open doors for students and set them up for success.

This initiative highlights the district's dedication to thinking beyond traditional models of education. By embracing programs like this, LRSD is giving students the tools they need to thrive in an increasingly competitive world while supporting families by lowering the financial barriers to college.



(Award-winning SuperSonic Storm of Southwest)

Little Rock School District Achieves Significant Literacy Milestone



The Little Rock School District (LRSD) has achieved a significant milestone based on the latest ATLAS assessment results and cut scores. The Arkansas Department of Education (ADE) announced that LRSD has surpassed the performance threshold outlined in Ark. Code Ann. § 6-15-2913, which triggers additional Coordinated Support from the Division of Elementary and Secondary Education (DESE). As a result, LRSD will no longer be required to participate in quarterly Act 1082 check-ins with the district support unit.

Under Arkansas law, DESE provides Coordinated Support to districts where 40-49% of students score in the lowest performance level on the prior year's state summative reading assessment. The latest results demonstrate that LRSD's scores have improved beyond this threshold, signaling a positive trend in student achievement and academic progress.

This milestone highlights LRSD's ongoing commitment to improving literacy outcomes and promoting a culture of learning and growth. The District acknowledges the vital role of community partnerships, innovative teaching strategies, and dedicated educators in achieving these results.

LRSD ESTABLISHES ADDITIONAL COMMUNITY SCHOOLS

The Little Rock School District and city leaders celebrated the expansion of the Community Schools program to include Dunbar Magnet Middle and McDermott Elementary, bringing the total to eight schools. These schools offer wraparound support services designed to help students and their families by addressing needs such as food insecurity, healthcare access, and academic challenges.

Launched in 2019, the Community Schools initiative connects staff, families, and community partners to provide resources both during and after school hours. Services include tutoring, food pantries, clothes closets, health services, and community events like free evening meals and resource fairs. A needs assessment is conducted at each campus to customize services.

Mayor Frank Scott Jr. praised the collaboration between the city and district, calling it a model for others in Arkansas. He emphasized the link between education and economic growth, stating that the city's progress depends on the success of its schools.

Each Community School has a dedicated coordinator to oversee services and partnerships. Jennifer Glasgow, the city's chief education officer, highlighted the joint funding agreement, with the city and district each contributing \$500,000 in cash or in-kind support annually.

Steven Juain Young, coordinator at Mabelvale Middle School, said the program's goal is to bring equity to schools and foster understanding among diverse cultures, describing the work as "from the heart." The program continues to serve as a vital resource for families and students in underserved neighborhoods.



LITTLE ROCK
COMMUNITY SCHOOLS

www.LRSD.org/community-schools



Elementary School Teachers of the Year



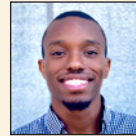
Ezra Phillips Armstrong
Bale Elementary



Krystal Williams
Baseline Academy



Nanette Stacker
Brady Elementary



Carl Ratliff
Carver STEAM Magnet
Elementary



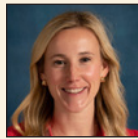
LaShana Flowers
Chicot Elementary



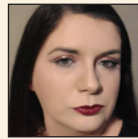
Ashley Nelsen
Fair Park Early
Childhood Center



Valencia Piggee
Forest Heights STEM
Academy



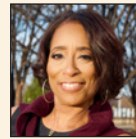
Anna Blair Williams
Forest Park Elementary



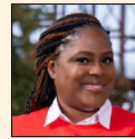
Amanda Crosby
Fulbright Elementary



Valerie Young
Geyer Springs Early
Childhood Center



Kecia Fells
Gibbs Magnet Elementary



Tiffani Scott
J.A. Fair K-8 Preparatory
Academy Elementary



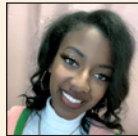
Lori Benson
Jefferson Elementary



Karen Green
Dr. Martin Luther King, Jr.
Elementary



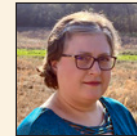
Deanna Woods-Davis
Mabelvale Elementary



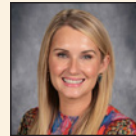
Keyjahna Hayes
McDermott Elementary



Karyna Johnson
Otter Creek Elementary



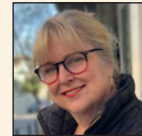
Katie LaBerge
Pulaski Heights
Elementary



Brittany Napper
Don R. Roberts Elementary



Ashley Bonner
Rockefeller Early
Childhood Center



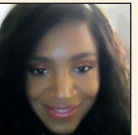
Lee Wilson
Romine Early Childhood



Sylvia Kelly
Stephens Elementary



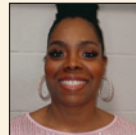
Lori Martin
Terry Elementary



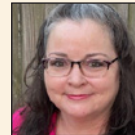
Tameka Williams
Wakefield Elementary



Stacey Jackson
Booker T. Washington
Elementary



Ronisha Johnson
Watson Elementary



Jennifer White
Western Hills Elementary



Susan Jackson
Williams Magnet

Middle School Teachers of the Year



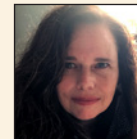
Antonio Moore
Cloverdale Middle



Angee Butcher
Cloverdale Middle



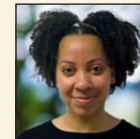
Ken Milton
Dunbar Magnet
Middle



Susannah Edwards
Dunbar Magnet Middle



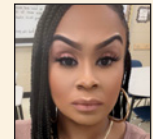
Aaron Harris
Forest Heights
STEM Academy (6-8)



Meghan Lewis
Forest Heights
STEM Academy (6-8)



Dequonce Marbury
JA Fair Middle



Jennifer Rowland
JA Fair Middle



Christina Rockwell
Mabelvale Middle



Reid Miller
Mabelvale Middle



Mindy Williams
Horace Mann Arts
and Science Magnet
Middle School



Charles Moore
Horace Mann Arts
and Science Magnet
Middle School



Jennifer Calloway
Pinnacle View Middle



Sharon Hawk
Pinnacle View Middle



Sandon Williams
Pulaski Heights Middle

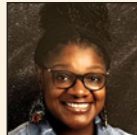


Marlo Jackson
Pulaski Heights Middle

High School Teachers of the Year



Ruthie Walls
LR Central High



Shayla Farid
LR Central High



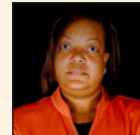
Kim Williams
LR Central High



Rebecca Barnett
LR Hall STEAM
Magnet High



Patrick Russell
LR Hall STEAM
Magnet High



Selita Farr
LR Hall STEAM
Magnet High



Lawrence Rush
LR Parkview
Arts/Science Magnet



Kimber Barber-Fendley
LR Parkview
Arts/Science Magnet



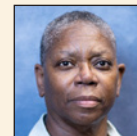
Judith Murray
LR Parkview
Arts/Science Magnet



Roger Robinson
LR Southwest
Magnet High



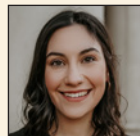
Loni Harshaw
LR Southwest
Magnet High



Judy Ward
LR Southwest
Magnet High



Kelly Taylor
LR West High School
of Innovation



Lily Darby
LR West High School
of Innovation



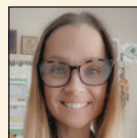
Lisa Drannon
LR West High School
of Innovation



Jessica Hartman
Accelerated
Learning Center



Suzanne Bonaminio
Adult Education



Ginger Beck
Hamilton
Learning Academy



Ezra Davidson
Metropolitan
Career-Tech Center



LORI MARTIN
2024 LRSD
TEACHER OF THE YEAR



KARYNA JOHNSON
2024 LRSD
ELEMENTARY SCHOOL
TEACHER OF THE YEAR



MINDY WILLIAMS
2024 LRSD
MIDDLE SCHOOL
TEACHER OF THE YEAR



RUTHIE WALLS
2024 LRSD
HIGH SCHOOL
TEACHER OF THE YEAR



LIANA GARCIA
2024 LRSD CLASSIFIED
EMPLOYEE OF THE YEAR

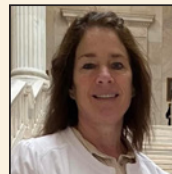
Classified Employees of the Year



Patricia Culverson
LRSD
Paraprofessional
of the Year



Ashton Hollowell
LRSD
Security Officer
of the Year



Christine Duellman
LRSD
Health Employee
of the Year



Kristalyn Hill
LRSD Child Nutrition
Employee of the Year



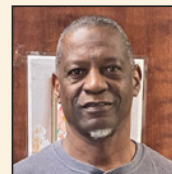
Gary Monts
LRSD
Custodian of the Year



Frederick Metcalf
LRSD Maintenance
and Operations
Employee of the Year



Liana Garcia
LRSD
Secretary/General
Employee of the Year



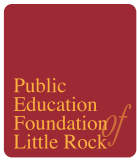
Larry Williams
LRSD
Transportation
Employee of the Year



Dianne Bell
First Student
Employee of the Year



Hazel Johnson
First Student
Employee of the Year



The Public Education Foundation and the Little Rock School District Present the



Class of 2024 Academic Signing Day



Top Scholars Honored at Academic Signing Day

Little Rock School District and Public Education Foundation Celebrate Excellence with 2024 Academic Signing Day

The Little Rock School District (LRSD), in partnership with the Public Education Foundation, proudly celebrates the outstanding achievements of students from all five LRSD high schools at the annual Academic Signing Day. This event highlights the remarkable accomplishments of the Class of 2024, whose members have been accepted to prestigious colleges and universities across the country.

This year's honorees will be attending institutions including Brown University, California State University - Fullerton, Centenary College of Louisiana, Columbia University, Dartmouth College, Emory University, Georgetown University, Georgia Institute of Technology, Grambling State University, Hampton University, Hendrix College, Howard University, Hunter College, Indiana University, Louisiana State University, Louisiana Tech University, Middlebury College, Mississippi State University, Ouachita Baptist University, Purdue University, Rhodes College, Saint Louis University, Sewanee - The University of the South, Southeast Missouri State University, Tennessee State University, Texas Southern University, UMKC School of Medicine, University of Arkansas Honors College, University of Arkansas - Little Rock, University of Arkansas - Fayetteville, University of Arkansas - Pine Bluff, University of California - Los Angeles, University of California - Santa Barbara, University of Central Arkansas, University of Central Arkansas - Schedler Honors College, University of Michigan, University of Missouri - Columbia, University of Missouri-Kansas City, University of

Pennsylvania, University of Southern California, University of Texas - Dallas, Vanderbilt University, Warren Alpert Medical School, Washington and Lee, Washington University - Saint Louis, and Xavier University of Louisiana.

Modeled after athletic signing days, Academic Signing Day celebrates academic excellence with the same level of pride and enthusiasm. Students choosing to pursue higher education in Arkansas or out of state are honored for their dedication and success.

To qualify for this prestigious recognition, graduates must meet at least one of the following criteria:

- A cumulative 4.0 grade-point average from grades nine through 12
- Recognition as valedictorian, salutatorian, or one of the top four graduates in their class
- Selection as a National Hispanic Scholar, National Merit Semifinalist, or National Merit Commended Scholar

Each year, LRSD students collectively earn over \$23 million in scholarships, demonstrating their commitment to academic excellence.

Freshmen should start inquiring at the beginning of their 9th grade year about participating in this prestigious academic celebration.

**Ranked 3rd
Among Arkansas
Elementary Schools**



Don Roberts Elementary School

Little Rock, AR | Little Rock School District

🏆 #3 in Arkansas Elementary Schools

Don Roberts Elementary School is a school located in Little Rock, AR, which is in a mid-size city setting. The student population of Don Roberts Elementary School is 1004, and the school serves K through...

Grade Level
K-5

Enrollment
1,004

Student-Teacher Ratio
19:1



**Ranked 16th
Among Arkansas
Elementary Schools**



Jefferson Elementary School

Little Rock, AR | Little Rock School District

🏆 #16 in Arkansas Elementary Schools

Jefferson Elementary School is a school located in Little Rock, AR, which is in a large suburb setting. The student population of Jefferson Elementary School is 413, and the school serves K through 5...

Grade Level
K-5

Enrollment
413

Student-Teacher Ratio
17:1



**Ranked 15th
Among Arkansas
Middle Schools**



Forest Heights Stem Academy

Little Rock, AR | Little Rock School District

🏆 #15 in Arkansas Middle Schools

Forest Heights Stem Academy is a school located in Little Rock, AR, which is in a mid-size city setting. The student population of Forest Heights Stem Academy is 739, and the school serves K through...

Grade Level
K-8

Enrollment
739

Student-Teacher Ratio
16:1



**Ranked 21st
Among Arkansas
High Schools**



Central High School

Little Rock, AR | Little Rock School District

🏆 #21 in Arkansas Rankings

Central High School is ranked 21st within Arkansas. Students have the opportunity to take Advanced Placement® coursework and exams. The AP® participation rate at Central High School is...

Graduation Rate
92%

College Readiness
36.2

Enrollment 9-12
2,338

Federal Grant for LRSD Magnet Schools



GRANTS - GRANTS - AND MORE GRANTS!!!

Federal Grant Awards

3/2024	\$981,706	Juvenile Justice and Delinquency Prevention
5/2024	\$9.9 mil	EPA Clean School Bus Program
6/2024	\$749,975	National Park Service AA Civil Rights Prog
10/2024	14.2 mil	USDOE Magnet Schools of Amer Prog
11/2024	11.5 mil	US Dept of Energy-Renew Amer Schools
11/2024	\$910,141	Dept of Justice Stop School Violence Prog

2024 GRANT AWARDS = \$52,183,631

Arkansas Department of Ed Awards

6/2024	\$745, 117	Pilot High Impact Tutoring Program
8/2024	\$200,000	Community of Practice Program
10/2024	\$932,900	High Impact Tutoring Program
10/2024	\$301,400	School Safety Grant
11/2024	\$20,000	Mentoring Program
11/2023*	\$83,026	Stronger Connections

Other Grants

10/2024	\$38,600	Arkansas Food Bank
---------	----------	--------------------

The Little Rock School District has been awarded a **\$14.2 million** Magnet School Assistance Program grant from the U.S. Department of Education, the largest grant in the district's history. Spread over five years, this funding will enhance programs at four magnet schools: Dr. Martin Luther King Elementary, Carver Elementary, Dunbar Middle, and Horace Mann Middle.

The grant will allow these schools to strengthen their specialized themes, integrating them into the full curriculum. Carver Elementary will expand its STEAM and leadership programs, including a language lab for Spanish, ASL, and Mandarin. King Academy will enhance its leadership and environmental programs with upgraded electives and field trips.

Dunbar Middle will adopt a business and entrepreneurship focus, offering personal finance lessons, apprenticeships, and a production studio. Horace Mann Middle will develop multi-media arts and digital communication programs, with support from partners like Crystal Bridges Museum.

The funding will also provide resources like instructional specialists and grant coordinators, ensuring the themes are fully integrated and engaging for students. Speaking of grants, take a look at the impressive totals awarded to LRSD for the 2023-2024 school year in the graphic above!



PRE-K

- Largest Provider of Public Pre-school
- Certified Teacher in Every Classroom
- LRSD Pre-K Students outperform peer group who did not attend LRSD Pre-K in every skill level

K-12

- Gifted and talented options
- Learning challenges support/ Special Education Options
- Academies of Central AR
- High School Prep Programs- Pre-AP, AP, Concurrent credit opportunities
- Earn approx. \$20 million annually in scholarships
- Record 30 National Merit Semi-finalists in 2021

ARTS

- Award-winning Arts Programs
- Creative and Performing Arts
- Consistently place in Top 5 – Arkansas Young Artists Association
- Arkansas PTA Awards
- Among Top Honors in Region and All-Region band/choral programs, Superior and First Chair Recognitions

ATHLETICS

- Champions or Finalists in multiple sports
- Tennis, Swimming, Wrestling, Football, Basketball, Golf, Soccer, Volleyball, Baseball, and Softball programs
- 6th Grade Model Up Sports Program

ADULT ED

- FREE, self-paced, individualized instruction for non-traditional adult students, ages 18 +
- Variety of classes including Adult Basic Education (ABE), Adult Secondary Education (ASE/GED), and English-As-A-Second Language (ESL)

LRSD Board of Education Goals

- **Goal 1 - College and Career Readiness:** Improve student achievement in reading and math, aiming towards meeting or exceeding grade level performance for all students.
- **Goal 2 - Career Pathways:** Through the implementation of academies and career pathways, increase by 5% each year for the next 5 years the number of students enrolled in a CTE career pathway and the number of students earning an industry certification; Increase by 5% each year for the next 5 years the number of students using career planning tools to explore careers, interests, and aptitudes.
- **Goal 3 - Student Recruitment and Retention:** Increase year over year K-12 enrollment such that by 2030, LRSD enrollment is equal to or greater than 24,000 students (or a number based on a current demographic study and population trends).
- **Goal 4 - Staff Recruitment and Retention:** Increase recruitment and retention rates of highly qualified teachers and leaders. Rank among the top five school districts in Arkansas in teacher salaries at every educational level by August 2024 and remain there every year thereafter; Ensure salaries of all staff remain competitive.
- **Constraint 1 - Welcoming and Supportive Schools:** Integrate Social Emotional Learning (SEL) Framework and practices district-wide in order to promote well-being and a sense of belonging amongst LRSD students and staff.
- **Constraint 2 - Parent/Family Partnerships:** Every school will create and implement a culturally responsive family engagement plan, welcoming and encouraging authentic partnerships in support of the child's educational experiences.

LRSD Increased Support for Schools Through Network System

This means more direct support is provided to schools. The primary goal of establishing networks is to encourage collaboration, resource sharing, and support mechanisms to enhance educational outcomes. At LRSD, the "Networks" allow schools to share best practices, develop curriculum together, and participate in professional development. This may also involve sharing data, research findings, and strategies to address common challenges and improve overall student achievement. LRSD has three primary Networks assigned to assistant superintendents:

Network 1 - Secondary Network Dr. Shana Loring, Assistant Superintendent			Network 2 - Elementary Network Dr. Karen Bradshaw, Assistant Superintendent		Network 3 - Elementary Network Dr. Amy Cooper, Assistant Superintendent
HIGH SCHOOL	MIDDLE SCHOOL	MIDDLE SCHOOL	ELEMENTARY	ELEMENTARY	ELEMENTARY SCHOOL
<ul style="list-style-type: none"> • Central • LR Southwest • Hall-West SOI • Parkview • Adult Ed • ALE 	<ul style="list-style-type: none"> • Dunbar • Forest Heights K-8 • JA Fair K-8 Academy • Mabelvale Middle • Mann • Pulaski Heights 	<ul style="list-style-type: none"> • Pinnacle View 	<ul style="list-style-type: none"> • Carver • Otter Creek • Terry • Williams 	<ul style="list-style-type: none"> • Forest Park • Fulbright • Gibbs • Jefferson • Pulaski Heights • Roberts • Wakefield 	<ul style="list-style-type: none"> • Bale • Brady • King • Mabelvale Elem • McDermott • Stephens • Washington • Watson • Western Hills
					K-8 <ul style="list-style-type: none"> • Dr. Marian G. Lacey K-8 Academy

2023-2024 ANNUAL REPORT

LITTLE ROCK SCHOOL DISTRICT

2023-2024 Accreditation Status: All schools fully accredited

BEATING THE ODDS RANKINGS:

Top 5 High-Poverty Elementary Schools in Central Arkansas Region with Most Math Growth

#3 Wakefield Elementary

Top 5 High-Poverty High Schools in Central Arkansas Region with Most ELA Growth (based on ACT Aspire)

#5 Little Rock Hall STEAM Magnet High

US NEWS AND WORLD REPORT RANKINGS FOR ARKANSAS



BEST ELEMENTARY SCHOOLS IN ARKANSAS

#3	Don Roberts Elementary
#16	Jefferson Elementary
#29	Forest Park Elementary



BEST HIGH SCHOOLS IN ARKANSAS

#21	Central High School
#54	Parkview Magnet High School

BEST MIDDLE SCHOOLS IN ARKANSAS

#15	Forest Heights Stem Academy
-----	-----------------------------

BEST HIGH SCHOOLS IN METRO AREA

#5	Central High School
#14	Parkview Magnet High School

AP RESULTS:

The Advanced Placement (AP) program offers high school students a rigorous, college-level curriculum that prepares students for college. Students scoring a 3, 4, or 5 on the AP exam may receive college credit. The district gave 3,550 AP exams. Of those exams, 1,953 earned a qualifying score of 3, 4, or 5. An AP Scholar is a student who received scores of 3 or higher on three or more AP exams. The district has 418 scholars who received one of the following distinctions: AP Scholar, AP Scholar with Honors, and AP Scholar with Distinction. In addition, 53 students earned an AP Capstone Diploma and 6 students received the AP Seminar and Research Certificate.

AP SCHOLARS 2024:

ORGANIZATION	TOTAL STUDENTS	NUMBER OF AP SCHOLARS	AP SCHOLAR WITH HONOR	AP SCHOLAR WITH DISTINCTION	AP CAPSTONE DIPLOMA	AP SEMINAR AND RESEARCH CERTIFICATE
District	418	189	64	163	53	8

PSAT/NMSQT:

The Preliminary SAT/National Merit Scholarship Qualifying Test (PSAT/NMQT) serves as an initial screener for the National Merit Scholarship Program. Semifinalists are students in the top one percent of the U.S. high school seniors and represent the highest scoring students in each state. For the 2025 National Merit Scholarship Program, 135 Arkansas students qualified as National Merit Semifinalists. Of that number, LRSD had 17 students named National Merit Semifinalists.



LITTLE ROCK
SCHOOL DISTRICT

ENROLLMENT

Take advantage of unique and innovative educational opportunities by enrolling in one of LRSD's schools. LRSD offers magnet schools, specialty programs, and career/professional studies, with concurrent credit opportunities.

LRSD Student Registration Office

501-447-2950

or visit www.LRSD.org/StudentRegistration

PRE-K (P3-P4) ENROLLMENT

The LRSD offers a free pre-school education of exceptional quality so your child will have a great start to his/her education. Pre-Kindergarten classes are located throughout the District in both elementary schools and early childhood centers.

501-447-7360

or visit www.LRSD.org/EarlyChildhood

IMPORTANT DATES

ARTISTRY IN THE ROCK

Tuesday, March 17- Thursday, March 20

VIPS – AN EVENING FOR THE STARS

Tuesday, April 22

TEACHER APPRECIATION WEEK

Monday, May 5 - Friday, May 9

AP EXAMS

**Monday, May 5 - Friday, May 9, and
Monday, May 12 - Friday, May 16**

OPPORTUNITY SCHOOL CHOICE WINDOW

May 1 Deadline • Parent application must be postmarked

July 1 • Notification from non-resident district

HIGH SCHOOL GRADUATIONS (Barton Coliseum)

THURSDAY, MAY 22, 2025

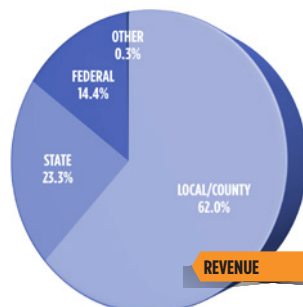
9:00am – Southwest High

12:00pm – Parkview High

2:30pm – Hall-West High

6:00pm – Central High

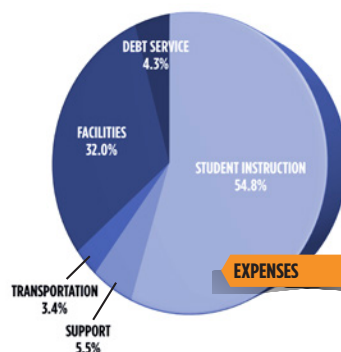
2023-2024 REVENUE & EXPENSES



REVENUE

Local/County.....	\$210,472,760
State.....	\$79,002,391
Federal.....	\$48,714,053
Other.....	\$1,128,722
Total Revenue.....	\$339,317,926

Tax Rate (Mills)..... 46.4

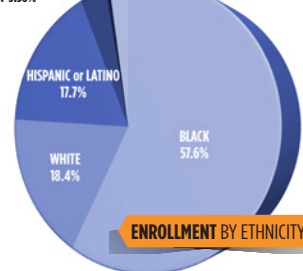


EXPENSES

Student Instruction.....	\$255,120,973
Instructional Support.....	\$25,486,615
Transportation.....	\$15,918,262
Facilities.....	\$149,067,802
Debt Service.....	\$20,084,960
Total Expenses.....	\$465,678,612

Expense Per Pupil..... \$23,536

Hawaii/Pacific Islander 0.08%
Native American/Alaskan Native 0.45%
ASIAN 3.38%
Two or More Races 2.38%



Average Teacher Salary..... \$69,960
First Year Teacher Salary..... \$50,000

LRSD's volunteer program, Volunteers in Public Schools (ViPS) is a vital component in the operation of all of our schools.

Total Volunteer Hours..... 709,269

* Impact value of over \$22 million dollars

Total Number of Partners in Education (PIE) 239