



Where Do My Tax Dollars Go?

A Look at the Plymouth Public Schools Budget

Presented By: **Dr. Christopher Campbell,**
Superintendent of Schools

www.plymouth.k12.ma.us



Big Picture: Plymouth Public Schools at a Glance

DISTRICT SNAPSHOT

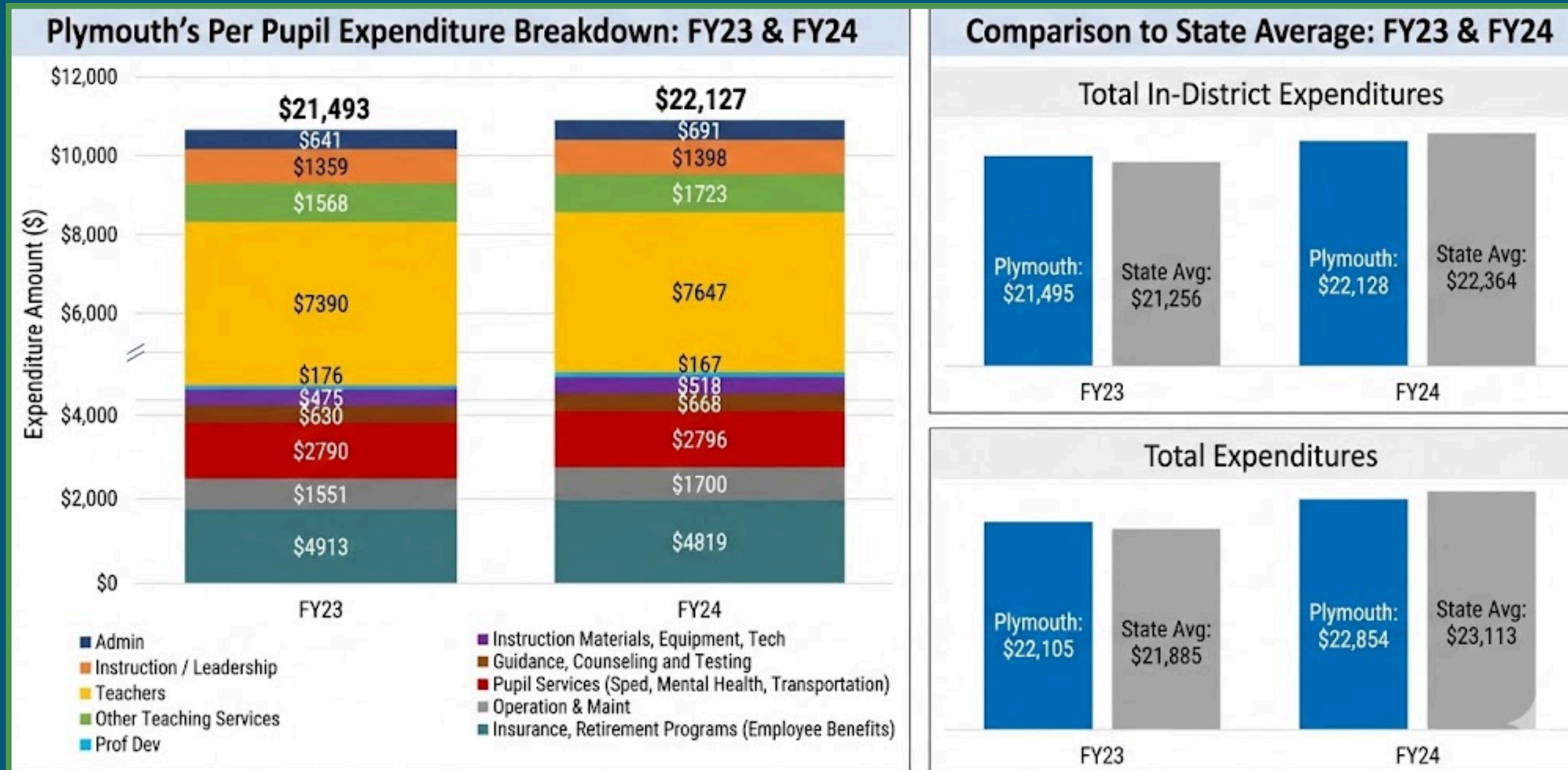
Plymouth is a large, complex district providing education, transportation, facilities, technology, and specialized services, every day, for every child.

FY26 OPERATING BUDGET

| OBJECT CODE | FY26 |
|-------------------------|----------------------|
| Certificated Salaries | \$80,230,562 |
| Clerical Salaries | \$3,535,026 |
| Other Salaries | \$16,147,433 |
| TOTAL SALARIES | \$99,913,020 |
| Contracted Services | \$25,279,968 |
| Supplies & Materials | \$2,815,782 |
| Other Expenses | \$735,607 |
| TOTAL NON-SALARY | \$28,831,357 |
| TOTAL | \$128,744,377 |



Where the Money Goes: Per-Pupil Spending



KEY TAKEAWAY

*Plymouth remains **at or below the state average** while serving a wide range of student needs.*

How School Funding Works in Massachusetts

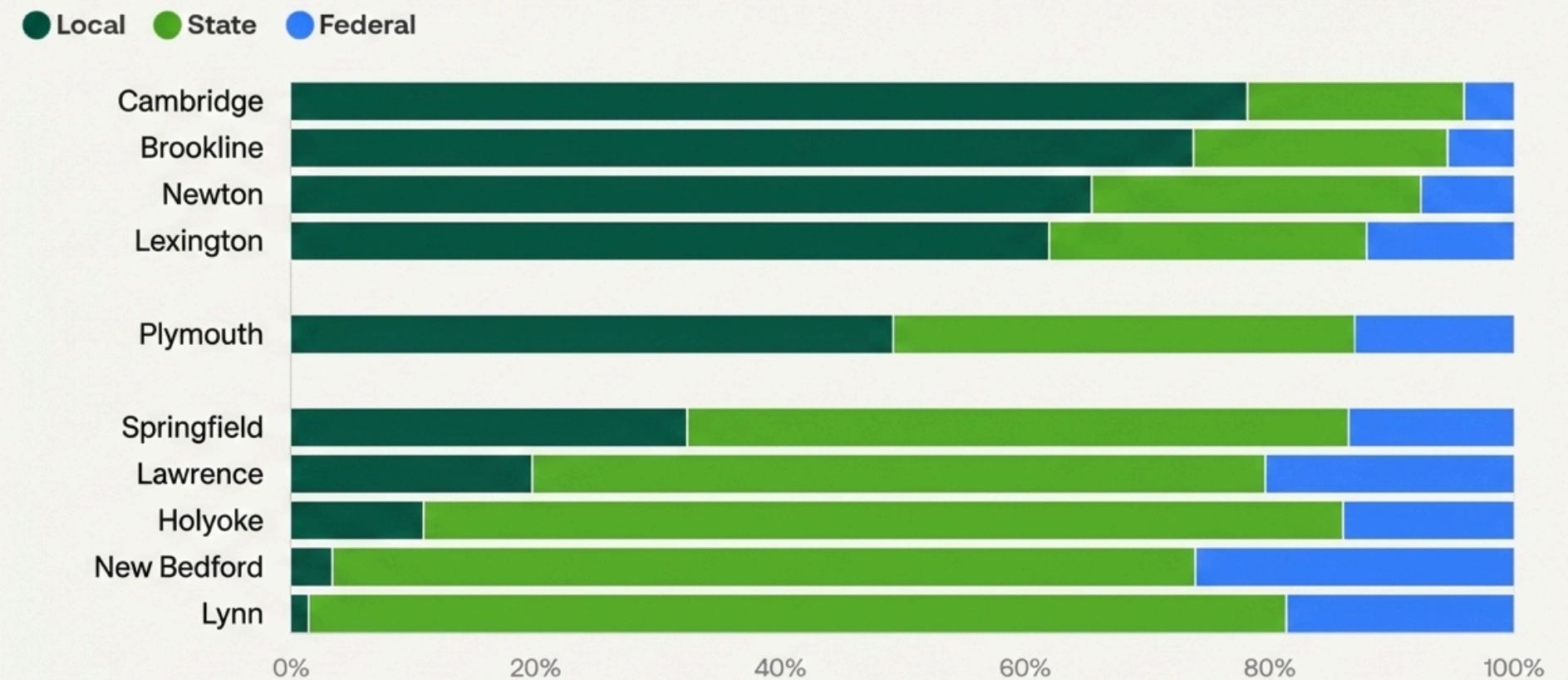
Districts also differ in where that funding comes from. Some rely more heavily on state-level revenue, like Lawrence, where 86% of school funding came from state sources. Others receive more through local sources, such as Brookline, where local dollars accounted for 78.2% of funding. In Plymouth, local dollars accounted for approximately 66% of school funding, with 26.9% coming from the state and the remaining 7% from federal funding. The breakdown by source highlights the ways Massachusetts structures support for public education.

KEY TAKEAWAY

The funding mix reflects how Massachusetts structures support for public education while balancing local and state responsibility.

Districts differ in how they fund public schools

Share of public school funding from local, state, and federal sources for 50 largest school districts in MA, 2021–2022 school year



Source: National Center for Education Statistics

USAFacts

How Your Tax Dollars Support Transportation

PLYMOUTH SCHOOL TRANSPORTATION: MILEAGE & BUDGET OVERVIEW

DAILY FLEET MILEAGE

4,729
MILES PER DAY

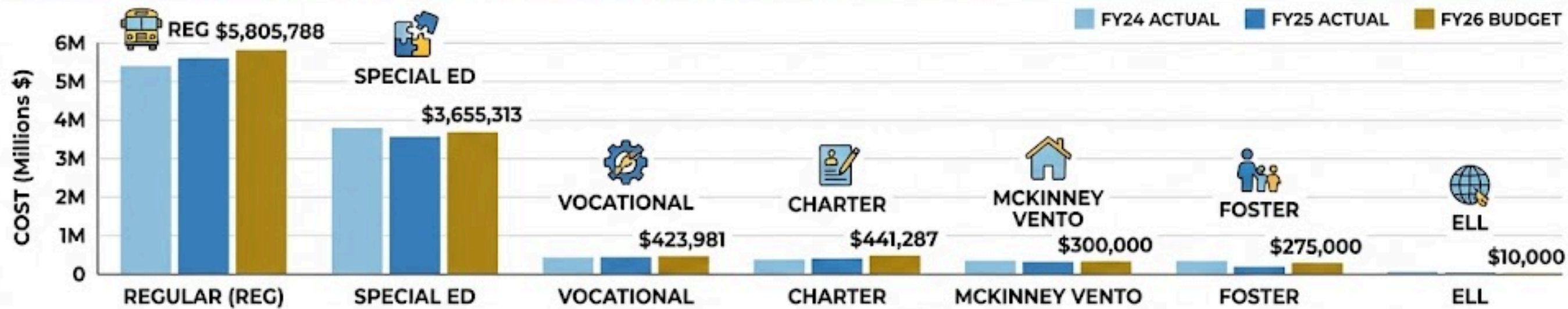


More than a cross-country trip, every day!

Equivalent to driving from Plymouth, MA to Los Angeles, CA and back, plus some.



TRANSPORTATION COST COMPARISON (FY24-FY26)



TOTAL BUDGET TREND

FY24 TOTAL:
\$10.7M

FY25 TOTAL:
\$10.4M

FY26 BUDGET TOTAL:
\$10,911,369

KEY TAKEAWAY

Transportation costs are driven by student needs, legal requirements, and geography, not discretionary spending.

Facilities: Maintaining Schools Every Day

PLYMOUTH SCHOOL FACILITIES: SCALE & MAINTENANCE OVERVIEW

DAILY MAINTENANCE SCALE



1.4 MILLION
SQUARE FEET
MAINTAINED DAILY



Equivalent to approximately 24
football fields of indoor space.



323 ACRES
OF GROUNDS
MAINTAINED DAILY



Roughly the size of 245
average city blocks.

Comprehensive Care

OPERATIONAL BUDGET ALLOCATION



\$1.11
PER SQUARE FT



ALLOCATED FOR
FACILITIES MAINTENANCE



$\times 1.4\text{M}$
SQ FT



ESTIMATED ANNUAL BUDGET
FOR MAINTENANCE \approx \$1,554,000



MAINTENANCE

OTHER



Efficient Resource
Management



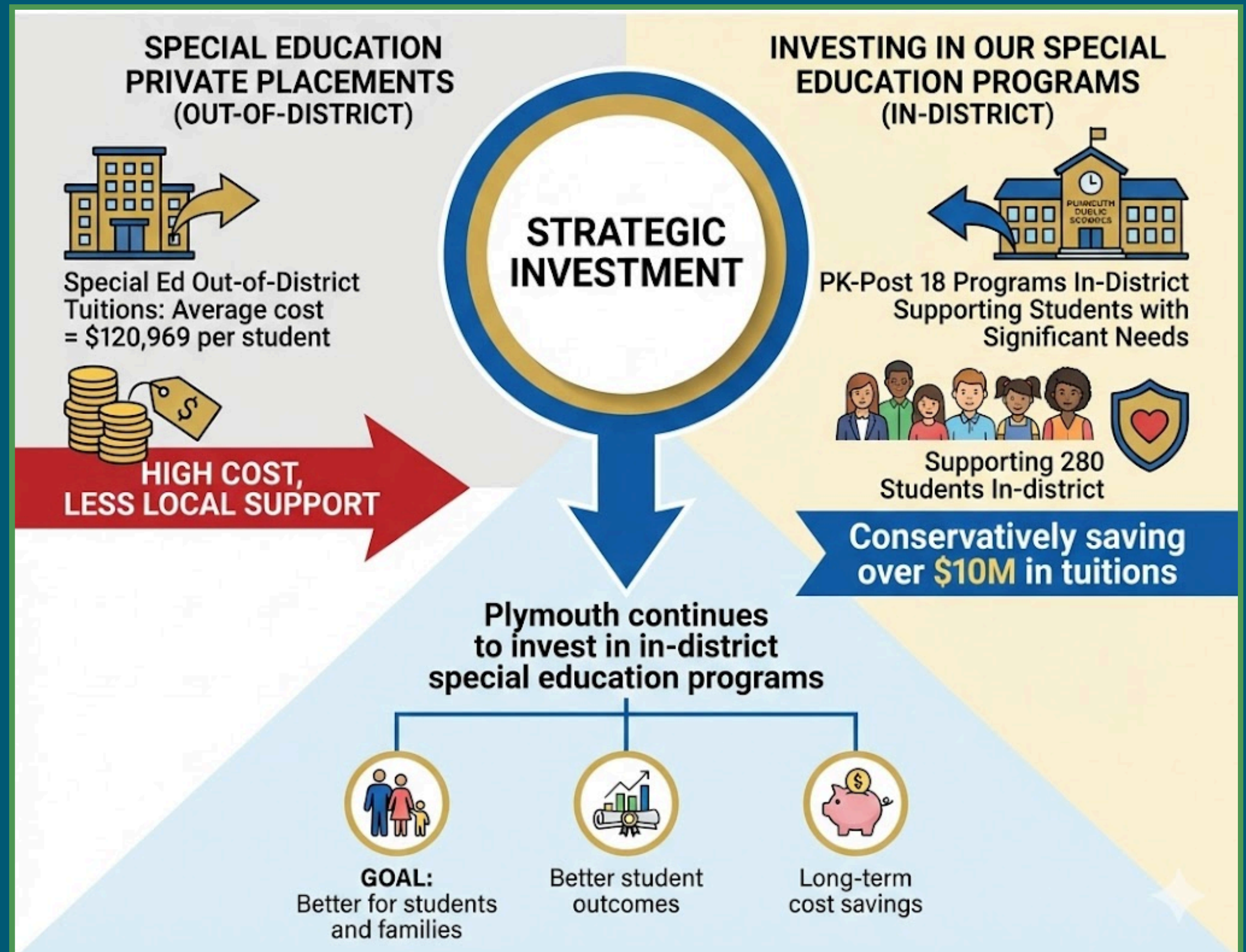
KEY TAKEAWAY

*Facilities funding
protects community
assets and keeps
schools safe and
operational.*

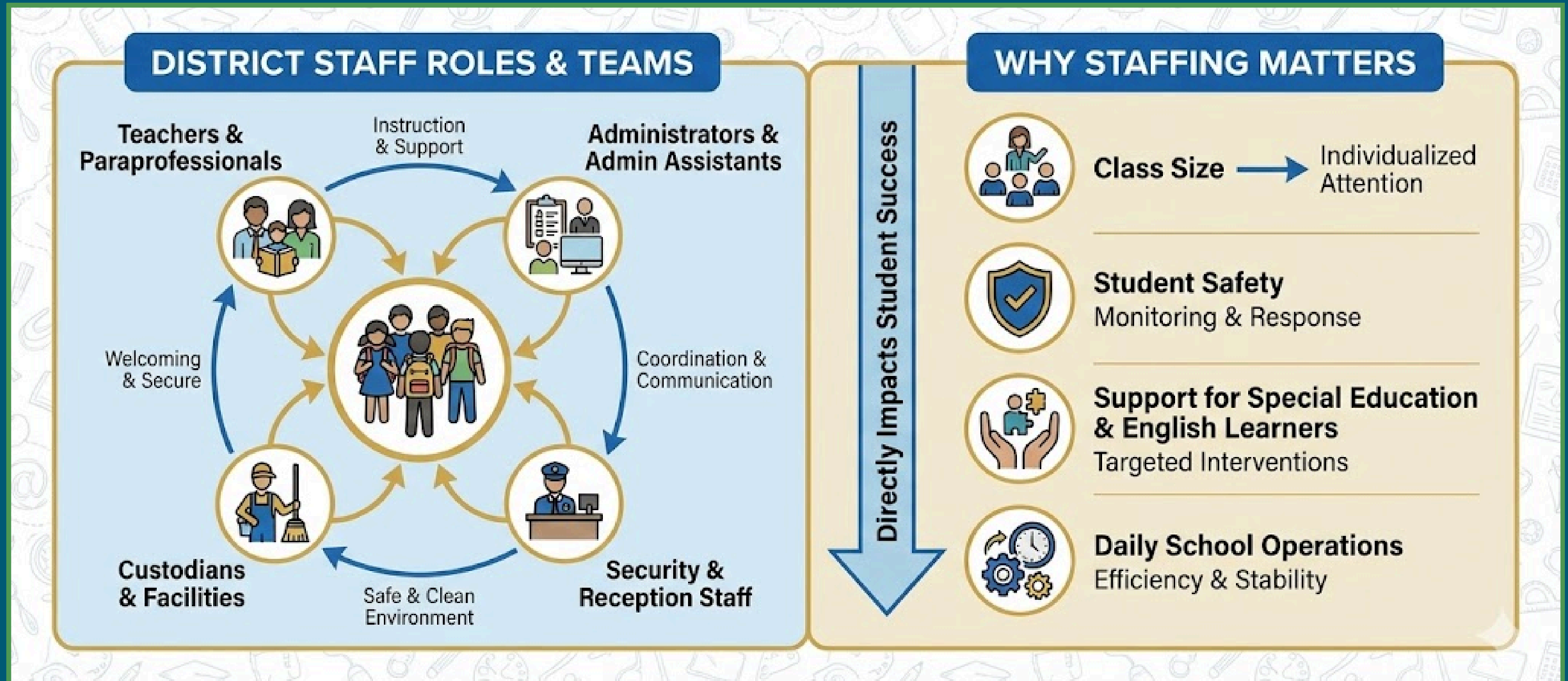
Special Ed: Meeting Legal & Moral Obligations Investing in Special Education

KEY TAKEAWAY

Special education funding reflects both **legal responsibility** and a commitment to serving every learner.



Staff Supporting Students Across the District



Staffing Across Schools



364

English Language Learners



7003

Students (as of Jan 22, 2026)



590.5

Teachers

Staff Count by School


| School | TEACHERS | PARAS | CUSTODIANS | ADMIN | ADMIN ASSTS | SECURITY RECEPT |
|--------|----------|-------|------------|-------|-------------|-----------------|
| CCTE | 20 | 23 | 1 | 1 | 2 | 2 |
| CCTE | 20 | 23 | 1 | 1 | 2 | 2 |
| PECC | 18 | 16 | 1 | 0 | 0 | 1 |
| CSES | 10 | 19 | 2 | 1 | 2 | 1 |
| FFES | 14 | 17 | 0 | 0 | 0 | 1 |
| HES | 12 | 12 | 2 | 1 | 1 | 1 |
| IBES | 9 | 4 | 0 | 0 | 1 | 2 |
| MES | 17 | 12 | 1 | 1 | 2 | 1 |
| NMES | 13 | 13 | 0 | 1 | 1 | 2 |
| SES | 18 | 18 | 0 | 0 | 1 | 3 |
| WES | 19 | 20 | 0 | 0 | 3 | 2 |
| PCIS | 8 | 8 | 1 | 0 | 0 | 1 |
| PSMS | 23 | 29 | 1 | 1 | 2 | 1 |
| PNHS | 30 | 21 | 0 | 2 | 4 | 2 |
| PSHS | 36 | 30 | 1 | 2 | 4 | 4 |
| PSHS | 33 | 37 | 0 | 2 | 5 | 4 |
| PNHS | 20 | 29 | 0 | 1 | 3 | 5 |
| HARB | 18 | 12 | 0 | 0 | 2 | 0 |

KEY TAKEAWAY

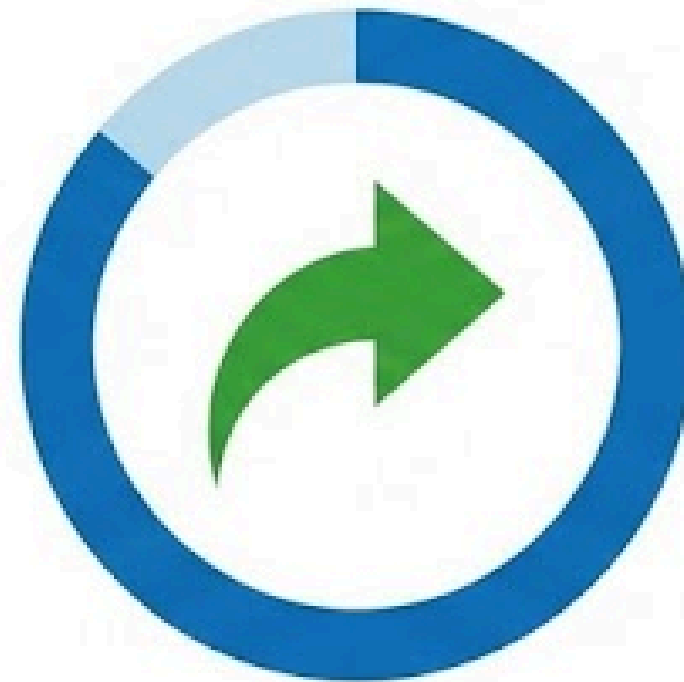
Staffing levels vary by school to meet student needs and building requirements.

Technology: Supporting Modern Learning


SUPPORTED TECHNOLOGY

| | |
|---|--------------------------------------|
|  | Desktops: 950 |
|  | Laptops: 814 |
|  | iPads: 1,391 |
|  | Chromebooks: 9,744 |
|  | Servers - Physical: 12 |
|  | Servers - Virtual: 35 |
|  | Cafeteria POS Terminals: 23 |
|  | IP Phones: 1,010 |
|  | Canon Copiers: 91 |
|  | Interactive Touch Panels: 346 |
|  | Wireless Access Points: 650 |
|  | Data Switches: 160 |
|  | Battery UPS: 118 |
|  | Network Printers: 321 |
|  | HS Voice Lift System: 186 |
|  | Projectors: 250 |






WORK ORDER STATUS



Tickets Received: 1,749

 **Time frame:**
08-01-2025 - 01-08-2026

TECHNOLOGY STAFF

| | |
|---|---------------------------------|
|  | Technology Systems Engineer |
|  | Assistant Tech Systems Engineer |
|  | Computer Technicians: 4 |
|  | Jr. Computer Technician |
|  | Administrative Assistant |



Plymouth Public Schools' Programs That Expand Opportunity



Advanced
Placement
Programs



College, Career
& Technical
Education
(CCTE)



Plymouth Public Schools'

Advanced Placement Programs

The Advanced Placement Program of the College Board offers college-level courses and exams. It allows students the opportunity to earn advanced standing in college by earning college credit while still in high school. The following courses are offered for Advanced Placement in the Plymouth Public Schools.

- English Literature AP
- English Language AP
- European History AP
- U.S. History AP
- Psychology AP
- Biology AP
- Chemistry AP
- Environmental Science AP
- Physics 1 AP
- Physics 2 AP
- Pre-Calculus AP
- Calculus AB AP
- Calculus BC AP
- Statistics AP
- Latin AP
- French AP
- Spanish AP
- Computer Science Principles AP
- Music Theory AP
- Studio Art AP
- 3D Studio Art AP
- Art History AP
- Computer Science A AP
- Economics AP
- American Government AP
- Human Geography AP
- US Government & Politics AP
- World History AP
- Physics C AP




Students earn college-level experience and potential college credit while still in high school.



Plymouth Public Schools'

College, Career & Technical Education Programs

- Culinary Arts
- Early Education & Care
- Electrical
- Graphic Design & Visual Communications
- Medical Assisting
- Auto Collision/Repair
- Allied Health
- Engineering Technology
- Facilities Management
- Marketing Education
- Computer Aided Drafting
- Construction: Carpentry, HVAC, Plumbing
- Cosmetology



1032
students
participating

*Building the future local
workforce in healthcare,
construction, engineering,
and technology.*



Learn More & Stay Informed:

Plymouth Public Schools

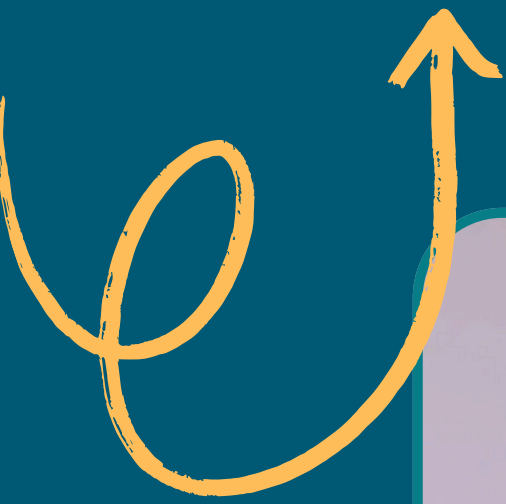
Budget Book



Scan the QR code to visit our Business Services webpage.



www.plymouth.k12.ma.us/business



Learn More & Stay Informed:

Plymouth Public Schools

Budget Video Series

www.plymouth.k12.ma.us/budget



Explore our financial priorities



Understand the budget breakdown



Transparency for our community

