



# Bangor School Department School Evaluation Presentation



OAK POINT  
ASSOCIATES

architecture  
engineering  
planning



# Bangor School District Map



## **OPTION 1 – \$80,583,964**

Keep all existing schools and grade configurations

### **All Schools – (Option 1, 1.1, 2 & 3)**

- Implement recommended facility improvements

## **OPTION 1.1 - \$90,968,229**

Keep all existing schools and grade configurations, except for Downeast School

### **Downeast School**

- New building Pre-K to 3 on existing site

### **All Remaining Schools – (Option 1, 1.1, 2 & 3)**

- Implement recommended facility improvements

### **Graphic Key**

Facility Improvements

Space Reconfiguration

New Construction

Building Addition

Discontinue

## **OPTION 2 - \$115,925,250**

Grade reconfiguration and building consolidation.

Elementary school reconfiguration will change from Pre-K through 3 to Pre-K through 2 with all day Pre-K and 3-5 and 6-8 will be consolidated district wide.

### **Abraham Lincoln School – (Option 2 & 3)**

- Reconfigured Pre-K to 2

### **Downeast School – (Option 2 & 3)**

- New building Pre-K to 2 on existing site

### **Fourteenth Street School**

- Discontinue use of building
- Students relocated to Vine and Doughty

### **Fruit Street School – (Option 2 & 3)**

- Renovated Pre-K to 2

### **Vine Street School**

- Renovated Pre-K to 2 including Fourteenth Street School students

### **Mary Snow School – (Option 2 & 3)**

- Discontinue use of building
- 4<sup>th</sup> and 5<sup>th</sup> grade relocate to James Doughty School

### **Fairmount School – (Option 2 & 3)**

- Discontinue use of building
- 4<sup>th</sup> and 5<sup>th</sup> grade relocate to James Doughty School

### **James Doughty School**

- Renovated 3-5 elementary school for entire district

### **William Cohen School – (Option 2 & 3)**

- Renovated 6-8 middle school for entire district

### **Bangor High School – (Option 2 & 3)**

- Renovated 9-12

### **Cameron Stadium – (Option 2 & 3)**

- Reconstruct on Griffin Road site with 8-lane track

### **Maintenance Storage Facility – (Option 2 & 3)**

- Construct district maintenance building on Griffin Road Site

### **All Remaining Schools – (Option 1, 1.1, 2 & 3)**

- Implement recommended facility improvements

## **OPTION 3 - \$118,407,720**

Grade reconfiguration and building consolidation.

Elementary school reconfiguration will change from Pre-K through 3 to Pre-K through 2 with all day Pre-K and 3<sup>rd</sup> grade, 4-5 and 6-8 will be consolidated district wide.

### **Abraham Lincoln School – (Option 2 & 3)**

- Reconfigured Pre-K to 2

### **Downeast School – (Option 2 & 3)**

- New building Pre-K to 2 on existing site

### **Fourteenth Street School**

- Renovated Pre-K to 2 including Vine Street School students

### **Fruit Street School – (Option 2 & 3)**

- Renovated Pre-K to 2

### **Vine Street School**

- Renovated 3<sup>rd</sup> grade school for the district to create 3-5 campus with James Doughty School

### **Mary Snow School – (Option 2 & 3)**

- Discontinue use of building
- 4<sup>th</sup> and 5<sup>th</sup> grade relocate to James Doughty School

### **Fairmount School – (Option 2 & 3)**

- Discontinue use of building
- 4<sup>th</sup> and 5<sup>th</sup> grade relocate to James Doughty School

### **James Doughty School**

- Renovated 4-5 Elementary School for the entire district

### **William Cohen School - (Option 2 & 3)**

- Renovated 6-8 middle school for entire district

### **Bangor High School – (Option 2 & 3)**

- Renovated 9-12

### **Cameron Stadium – (Option 2 & 3)**

- Reconstruct on Griffin Road site with 8-lane track

### **Maintenance Storage Facility – (Option 2 & 3)**

- Construct district maintenance building on Griffin Road Site

### **All Remaining Schools – (Option 1, 1.1, 2 & 3)**

- Implement recommended facility improvements

# Option Comparison Summary



## OPTION 1

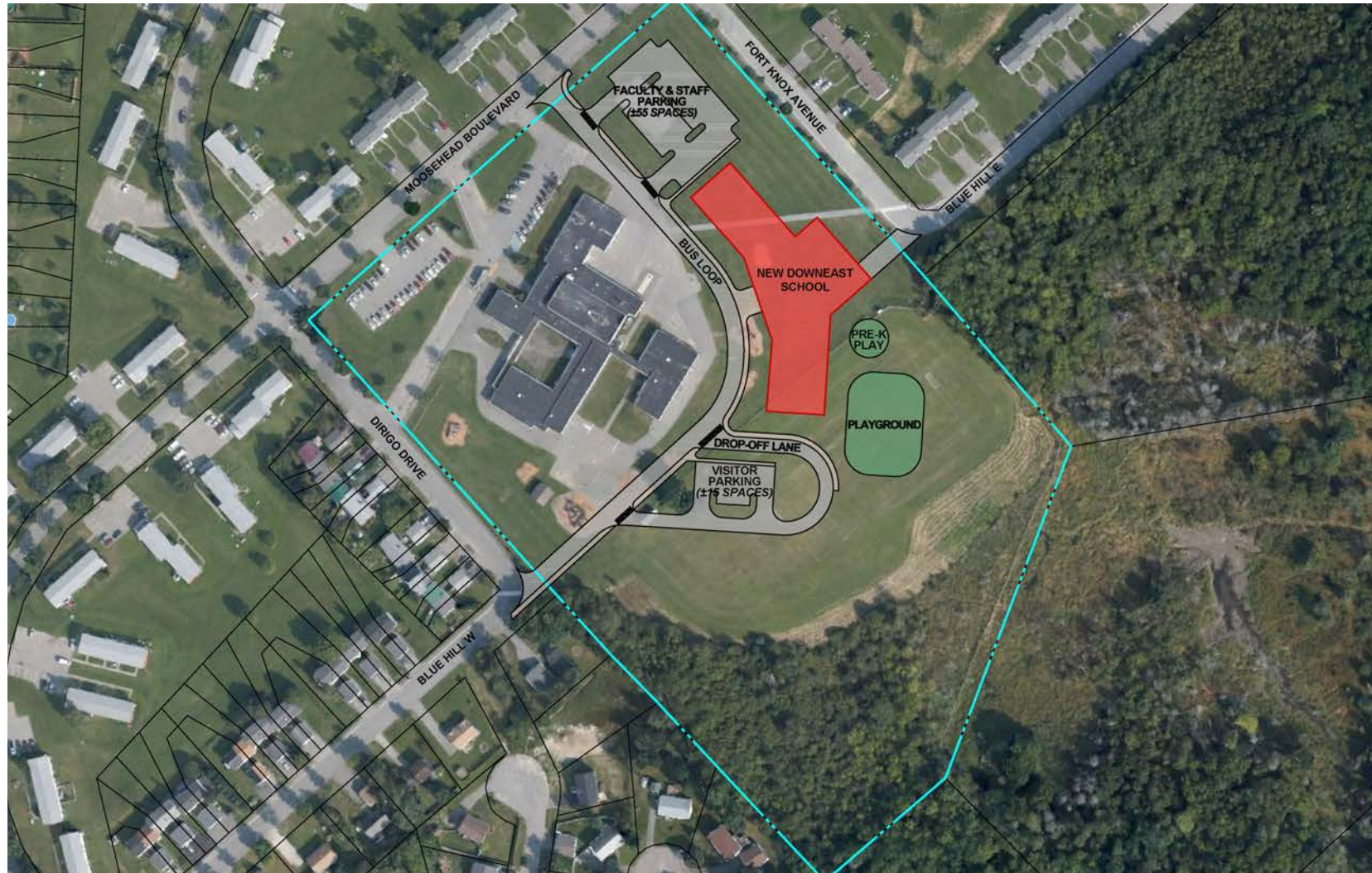
School	Grades	Proposed Area	Proposed Enrollment	Recommended Area per student	Area per student	Enrollment October 1, 2018	Cost			
							Facility Improvements	Space Reconfiguration	New Construction	Total
Abraham Lincoln School	PK - 3	35,384	218	140	162.3	218	\$3,007,873	\$0	\$0	\$3,007,873
Downeast School	PK - 3	40,645	293	140	138.7	293	\$7,090,985	\$0	\$0	\$7,090,985
Fourteenth Street School	PK - 3	22,682	140	140	162.0	140	\$2,634,770	\$0	\$0	\$2,634,770
Fruit Street School	PK - 3	39,381	325	140	121.2	325	\$5,398,685	\$0	\$0	\$5,398,685
Vine Street School	PK - 3	39,106	195	140	200.5	195	\$5,780,253	\$0	\$0	\$5,780,253
Fairmount School	4 - 5	45,179	267	140	169.2	267	\$6,616,629	\$0	\$0	\$6,616,629
Mary Snow School	4 - 5	38,200	231	140	165.4	231	\$6,712,880	\$0	\$0	\$6,712,880
James F. Doughty School	6 - 8	79,058	372	160	212.5	372	\$6,685,818	\$0	\$0	\$6,685,818
William S. Cohen School	6 - 8	80,099	406	160	197.3	406	\$7,226,627	\$0	\$0	\$7,226,627
Bangor High School	9 - 12	223,882	1215	185	184.3	1215	\$29,429,444	\$0	\$0	\$29,429,444
		<b>643,616</b>	<b>3,662</b>			<b>3,662</b>	<b>\$80,583,964</b>	<b>\$0</b>	<b>\$0</b>	<b>\$80,583,964</b>

Facility Improvements

Keep all existing schools and grade configurations.



Reconstruct school of same size and grade configuration on the existing site. Sitework associated with the construction of the new building will include separate bus and parent drop-off/pick-up areas and parking for faculty, staff, and visitors. Separate play areas will be provided for Pre-K students and other grades. Sidewalk networks, site lighting, and a building service area will also be provided.



## Option 1.1 – Downeast School



## OPTION 1.1

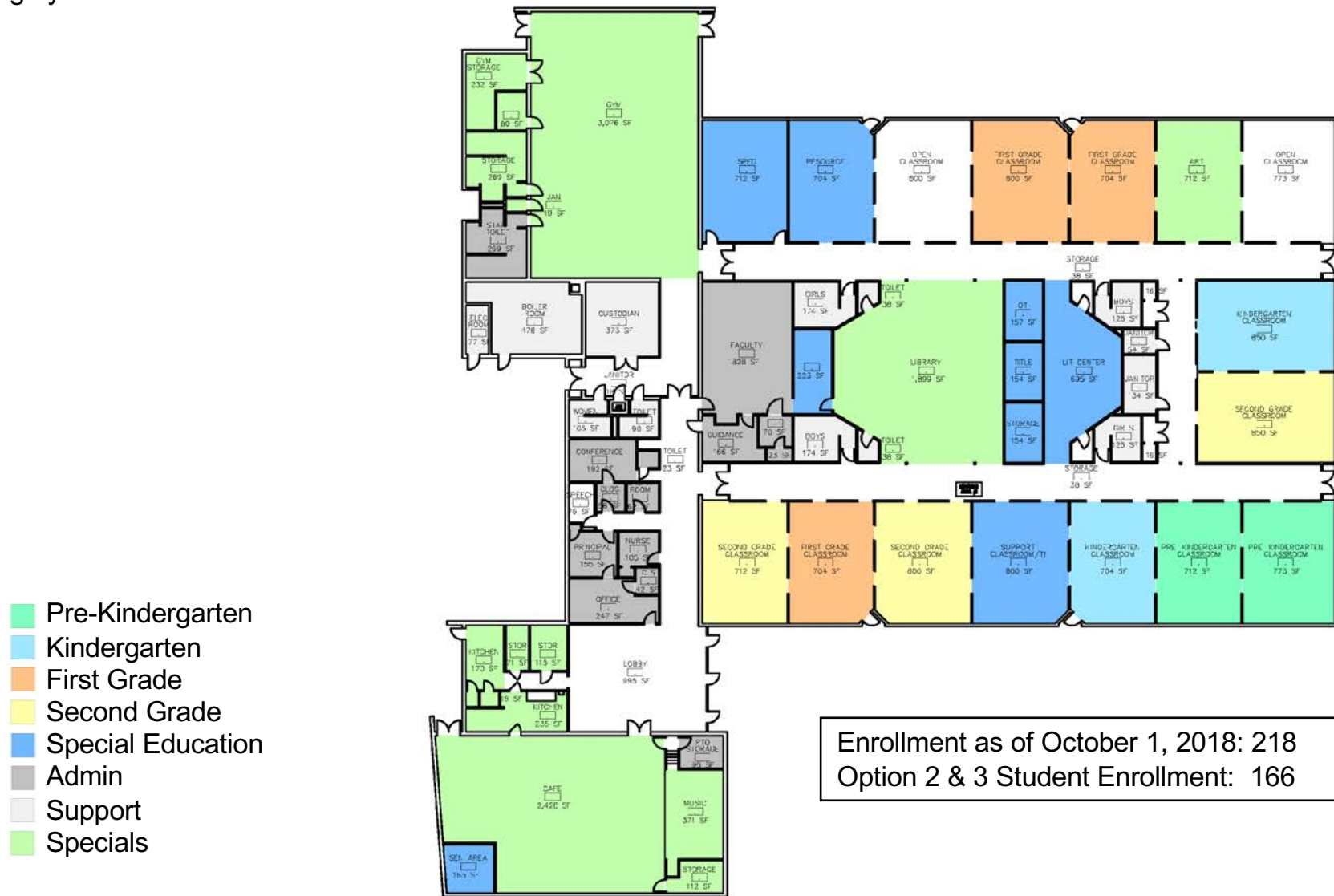
School	Grades	Proposed Area	Proposed Enrollment	Recommended Area per student	Area per student	Enrollment October 1, 2018	Cost			
							Facility Improvements	Space Reconfiguration	New Construction	Total
Abraham Lincoln School	PK - 3	35,384	218	140	162.3	218	\$3,007,873	\$0	\$0	\$3,007,873
Downeast School	PK - 3	40,645	293	140	138.7	293	\$0	\$0	\$17,475,250	\$17,475,250
Fourteenth Street School	PK - 3	22,682	140	140	162.0	140	\$2,634,770	\$0	\$0	\$2,634,770
Fruit Street School	PK - 3	39,381	325	140	121.2	325	\$5,398,685	\$0	\$0	\$5,398,685
Vine Street School	PK - 3	39,106	195	140	200.5	195	\$5,780,253	\$0	\$0	\$5,780,253
Fairmount School	4 - 5	45,179	267	140	169.2	267	\$6,616,629	\$0	\$0	\$6,616,629
Mary Snow School	4 - 5	38,200	231	140	165.4	231	\$6,712,880	\$0	\$0	\$6,712,880
James F. Doughty School	6 - 8	79,058	372	160	212.5	372	\$6,685,818	\$0	\$0	\$6,685,818
William S. Cohen School	6 - 8	80,099	406	160	197.3	406	\$7,226,627	\$0	\$0	\$7,226,627
Bangor High School	9 - 12	223,882	1215	185	184.3	1215	\$29,429,444	\$0	\$0	\$29,429,444
		<b>643,616</b>	<b>3,662</b>			<b>3,662</b>	<b>\$73,492,979</b>	<b>\$0</b>	<b>\$17,475,250</b>	<b>\$90,968,229</b>

	Facility Improvements
	New Construction

Reconstruct Downeast on existing site.  
Keep all other existing schools and grade configurations.



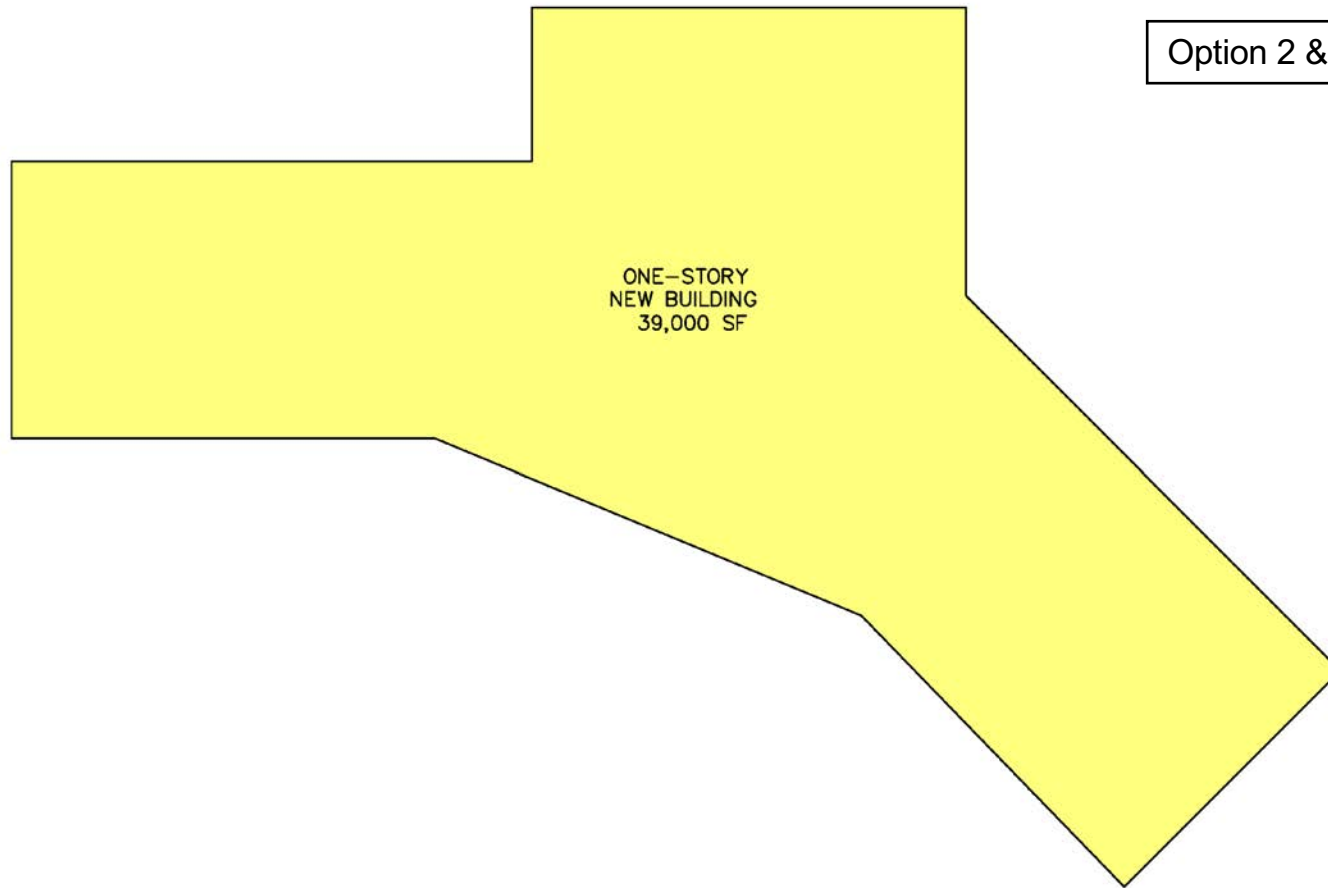
Grade configuration change from PK-3 to all day PK-2 to accommodate 166 students. Open classroom spaces from 3<sup>rd</sup> grade will allow for additional PK classroom and upgrades to special ed spaces. Third grade students relocate to James Doughty School.



## Option 2 – Abraham Lincoln School



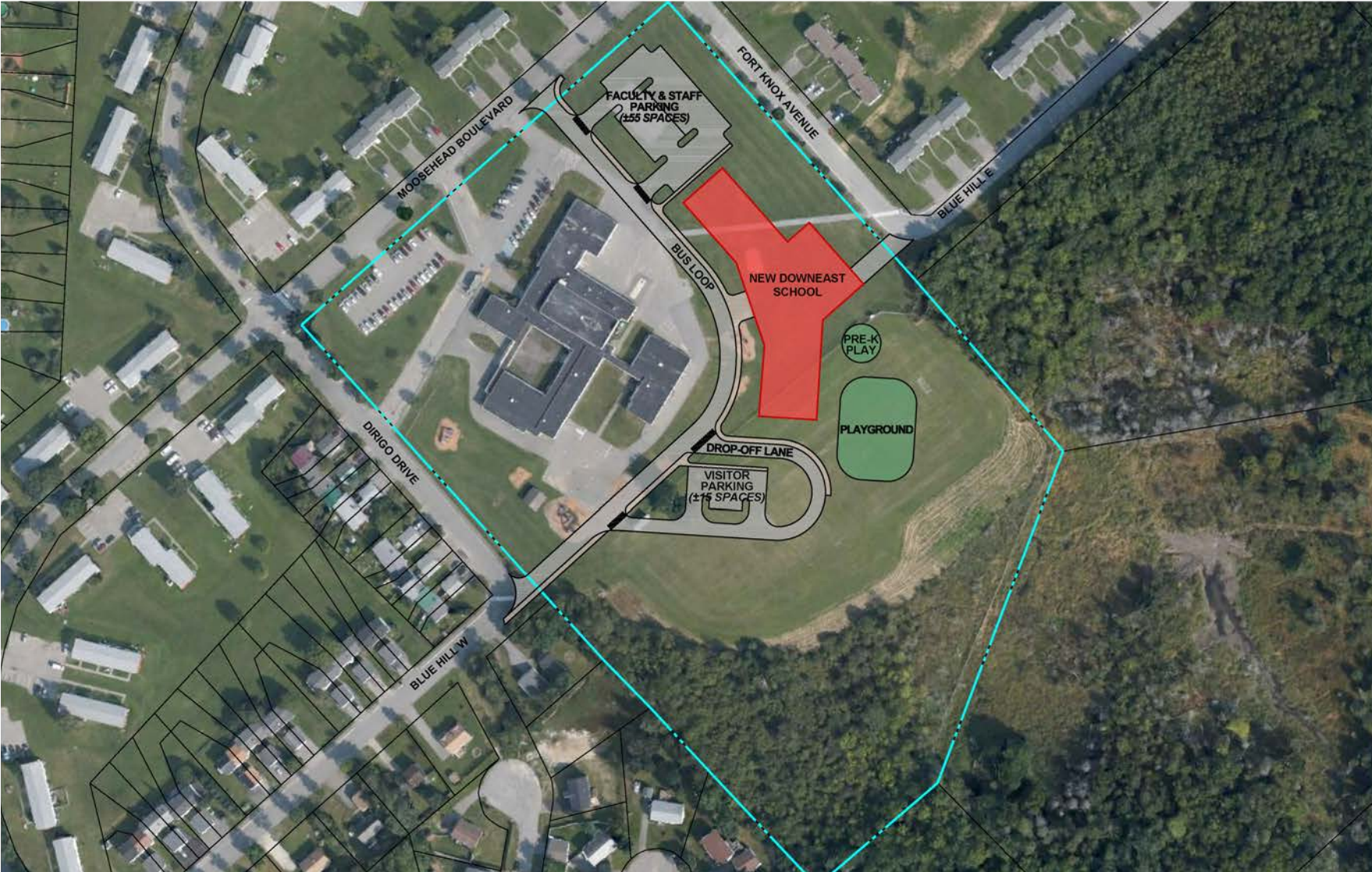
Grade configuration change from PK-3 to all day PK-2 to 228 students. Construct 39,000sf new building on the existing site while keeping the existing school operational during construction.



Option 2 & 3 Student Enrollment: 228



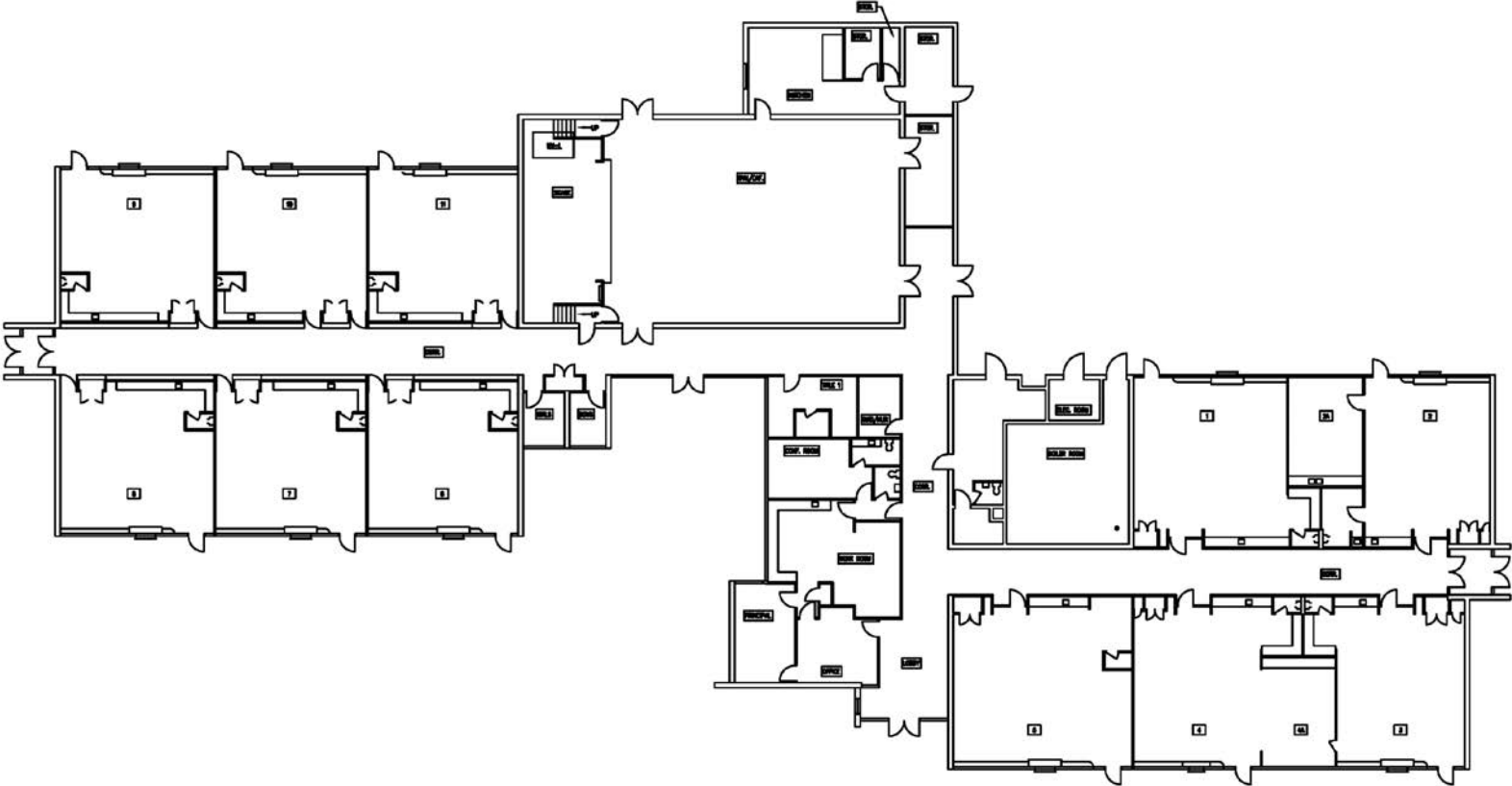
Sitework associated with the construction of the new building will include separate bus and parent drop-off/pick-up areas and parking for faculty, staff, and visitors. Separate play areas will be provided for Pre-K students and other grades. Sidewalk networks, site lighting, and a building service area will also be provided.



# Option 2 – Downeast School



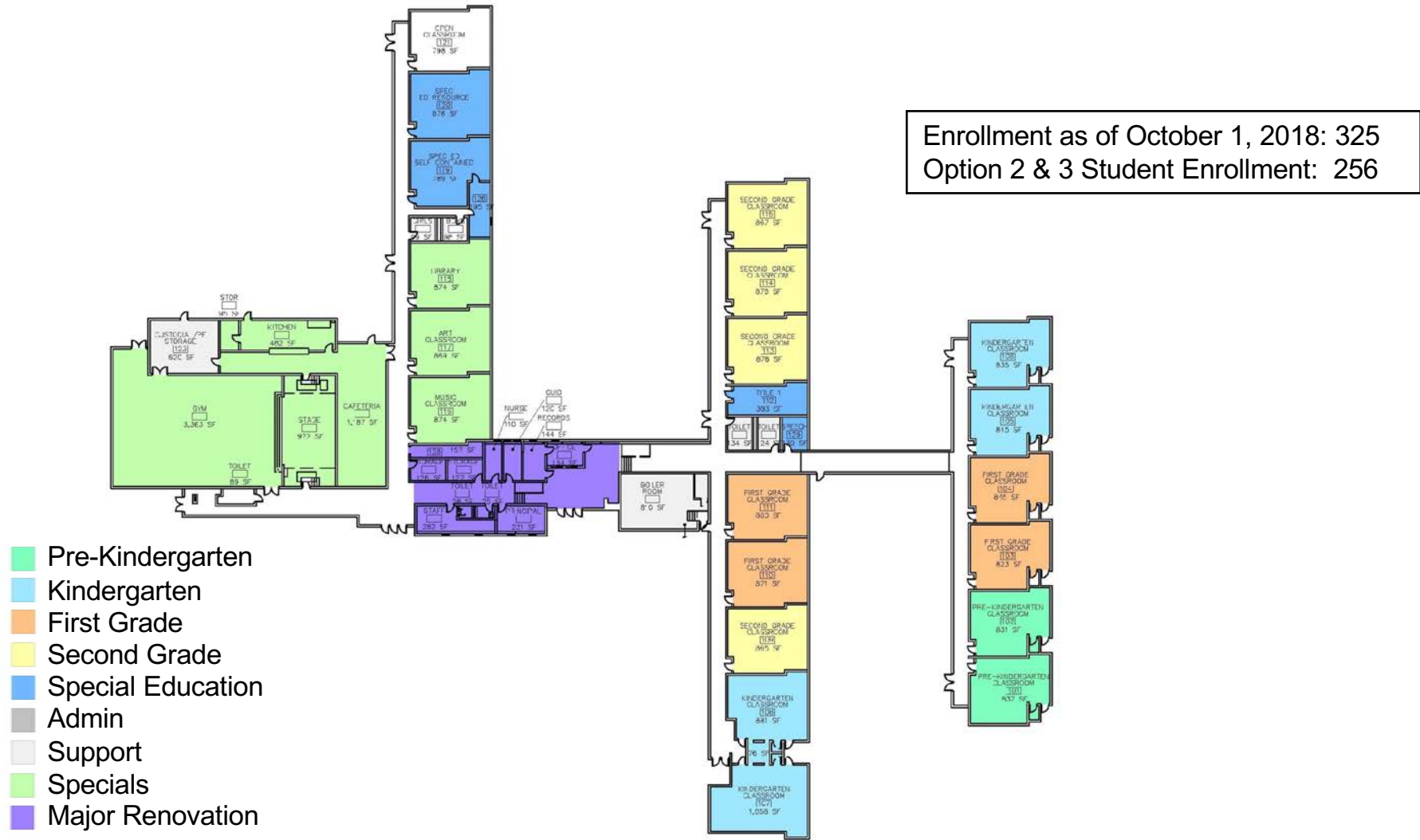
PK-2 students relocate to Vine Street; third grade students relocate to James Doughty School. Discontinue use of building.



Option 2 – Fourteenth Street School



Grade configuration change from PK-3 to all day PK-2 to accommodate 256 students. Open classroom spaces from 3<sup>rd</sup> grade will allow for an additional PK classroom, art and music classrooms and upgrades to special ed spaces. Major interior renovations of 2,885sf include reorganization of the main office area to provide a secure and accessible entry. Third grade students relocate to James Doughty School.



## Option 2 – Fruit Street School





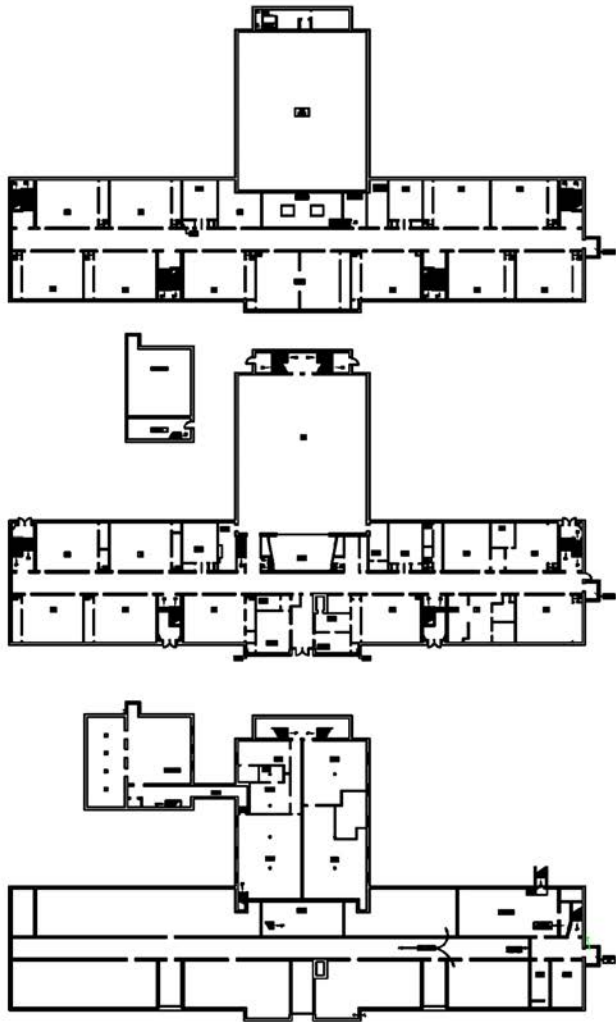
Parking will be provided for faculty, staff, and visitors in existing 31-car lot and in a proposed lot with approximately 24 spaces. A Pre-K playground will be constructed between the two southerly-most wings of the building and additional playground space will be located on the existing softball field and will be accessed via a pedestrian walkway that also connects to the Doughty School.



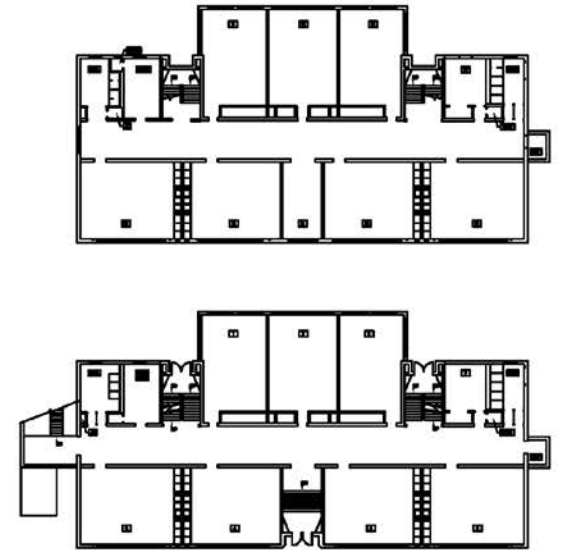
# Option 2 – Vine Street School



4<sup>th</sup> and 5<sup>th</sup> grade relocate to James Doughty School. Discontinue use of buildings.



Mary Snow School



Fairmount School

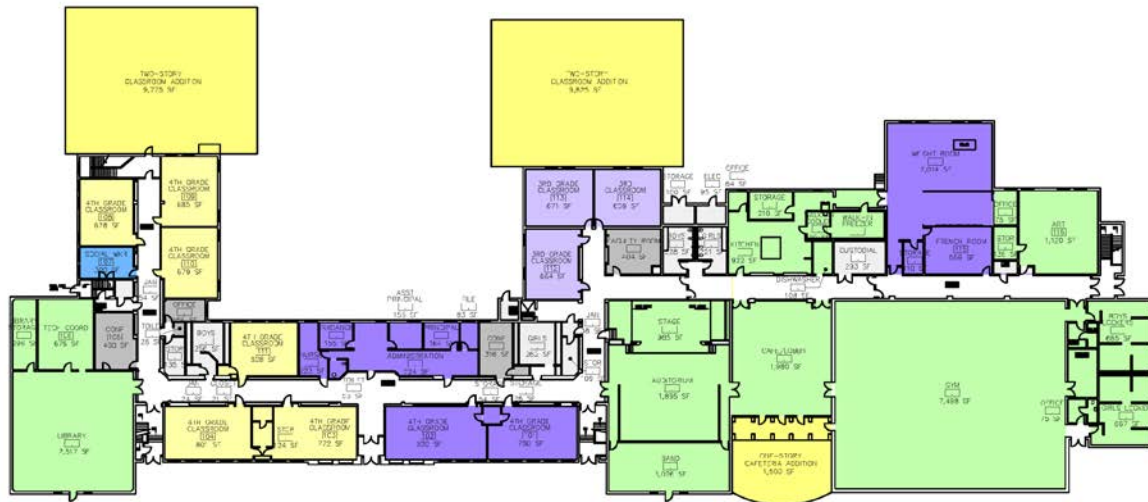
Option 2 – Mary Snow School & Fairmount School



Construct three additions totaling 21,100sf to create a 3-5 Elementary School for the entire district to accommodate 762 students. Additions would include 12 general classrooms, special ed spaces, 5 small group rooms and add 1,500 sf to the cafeteria. Major interior renovations of 6,145sf would include relocating the main office across the hall to create a secure centralized entry/office suite, the exiting office would be changed to classroom space, and the existing weight and French rooms would become new art and music spaces.



- 3<sup>rd</sup> Grade
- 4<sup>th</sup> Grade
- 5<sup>th</sup> Grade
- Special Education
- Admin
- Support
- Specials
- Major Renovation
- Addition



Enrollment as of October 1, 2018: 372  
 Option 2 Student Enrollment: 762

# Option 2 – James Doughty School



Construct a one-way loop road around the rear of the school to provide access to two faculty and staff parking lots with approximately 92 spaces and provide queuing space for approximately nine buses. Construct a separate parent drop-off lane and visitor parking for approximately 12 cars at the front of the school adjacent to the main entrance. The play areas for the Doughty and Vine Street Schools will be connected by a pedestrian walkway and a small open field will remain between the schools.

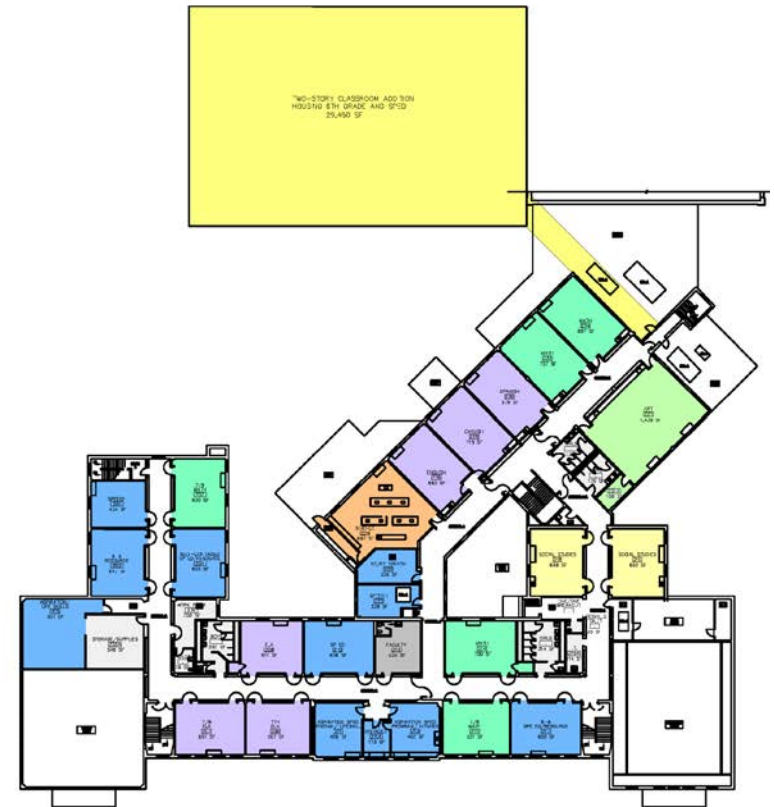
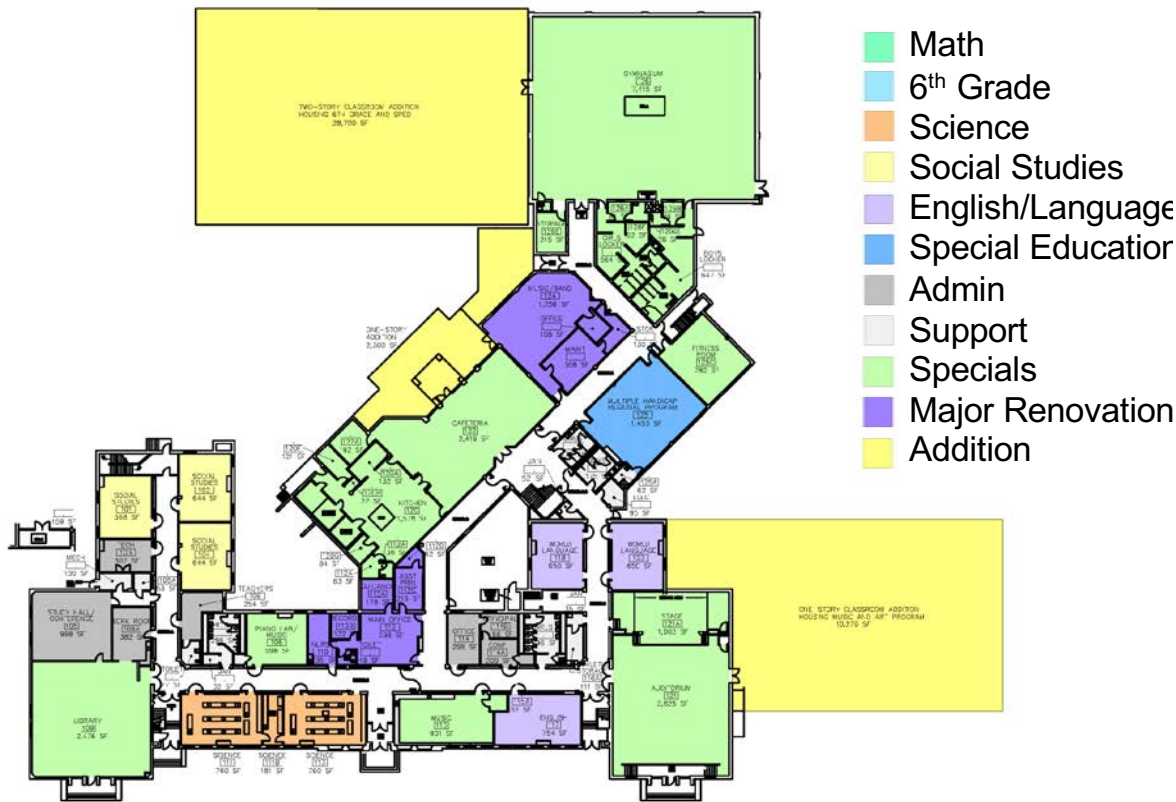


## Option 2 – James Doughty School



Construct two additions totaling 41,270sf to create a 6-8 Middle School for the entire district to accommodate 778 students. Additions would include 22 general classrooms, 3 science classrooms, art rooms, music rooms, special ed spaces, 8 small group rooms and 1,580 sf to the cafeteria. This option would create a “school within a school” concept housing 6<sup>th</sup> grade in the new classroom wing and 7/8 in the existing building. Major interior renovations of 3,500sf include relocating the main office and secure entry adjacent to the cafeteria in the existing band space and changing the existing main office into classroom space. The new entrance of the building will be on the westerly side with the main entrance located between the new 6<sup>th</sup> grade wing and the existing cafeteria.

Enrollment as of October 1, 2018: 406  
 Option 2 & 3 Student Enrollment: 778



## Option 2 – William Cohen School



Construct a bus loop for approximately nine buses and faculty and staff parking for approximately 80 cars on the Garland street (southerly) side of the building. Construct a parent drop-off lane, additional parking for faculty, staff and visitors, and a sidewalk network/courtyard on the westerly side of the building, adjacent to the new building entrance. Provide a new basketball court just north of the existing tennis courts. Cameron Stadium would be used as a sports facility to support the athletic program for the combined middle school.



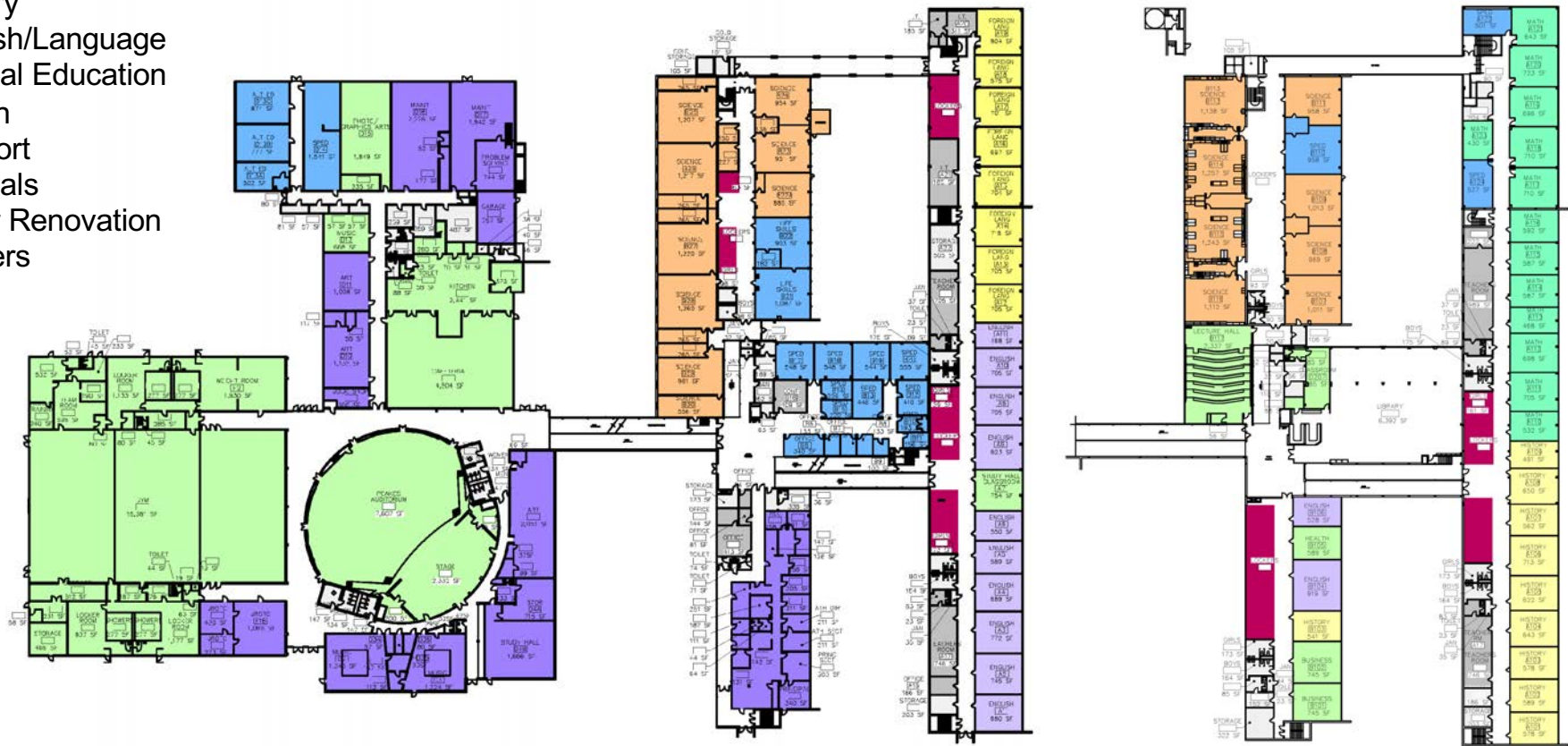
## Option 2 – William Cohen School



Major interior renovations of 23,130sf would include relocating the main office to the current JROTC and music rooms by the auditorium and creating a new secure main entrance. Music and theater storage would move to the current art and study hall room behind the auditorium. District maintenance would move out of the high school building to a new facility. Space made available by moving the main office and district maintenance will allow for relocation of JROTC and study hall, consolidation of art classrooms and expansion of the cafeteria. Within each of the classroom wings, several bays of lockers would be removed to create small group/collaboration rooms.

Enrollment as of October 1, 2018: 1,215  
 Option 2 & 3 Student Enrollment: 1,215

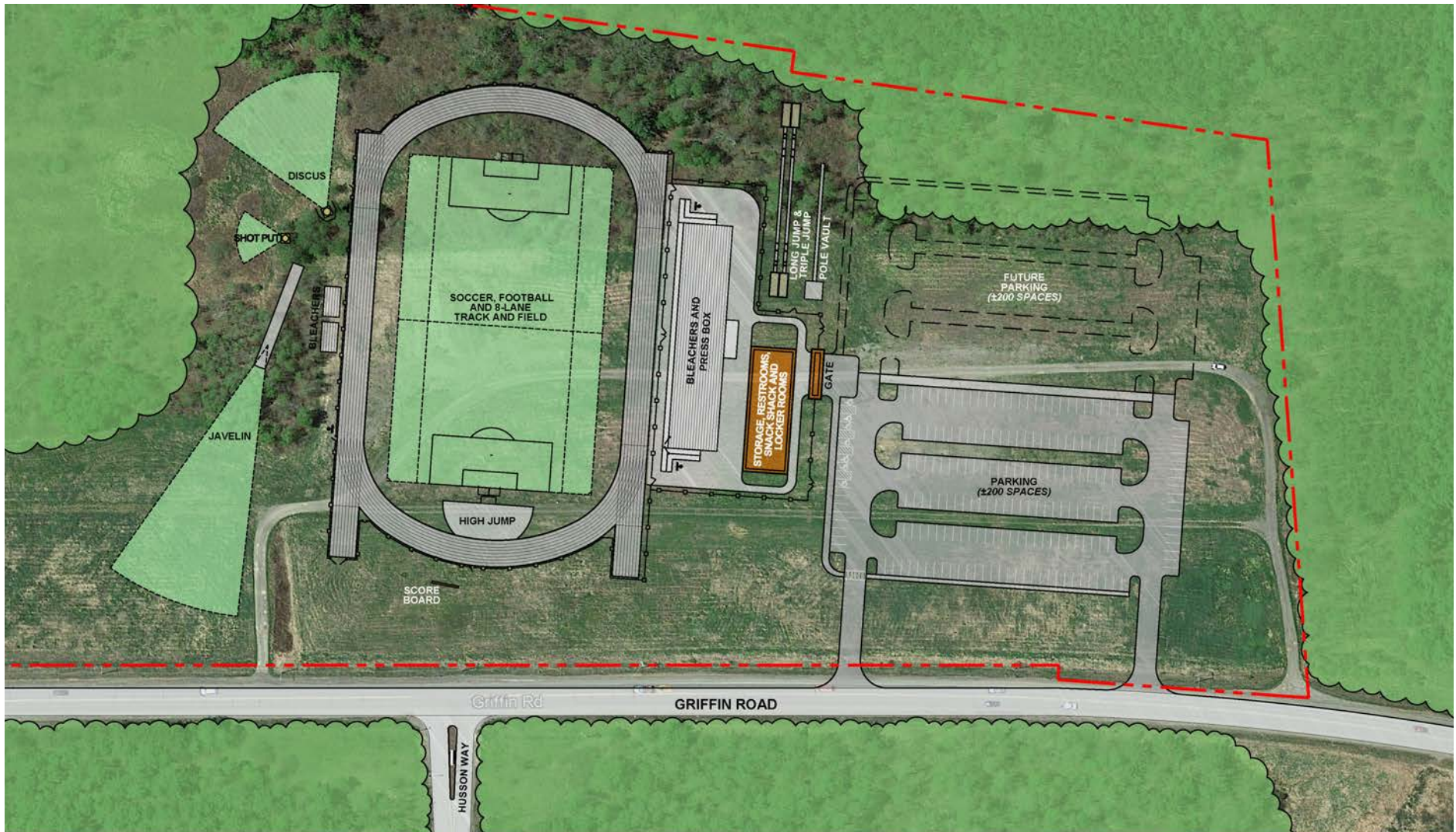
- Math
- Foreign Language
- Science
- History
- English/Language
- Special Education
- Admin
- Support
- Specials
- Major Renovation
- Lockers



## Option 2 – Bangor High School



Reconstruct stadium on Griffin Road site - Provide a lighted 8-lane track with integral football/soccer and space for field events outside of the track area. Relocate the existing bleachers to the new site and provide a controlled access gateway for spectators. Construct an approximately 6,700 SF building for storage, restrooms, locker rooms, and a snack shack and a paved parking area for approximately 200 cars with space for an additional 200 cars in the future.



## Option 2 – Cameron Stadium



Construct a 5,900sf building on the Griffin Road site for district maintenance and storage.



## Option 2 – Maintenance Storage Facility



## OPTION 2

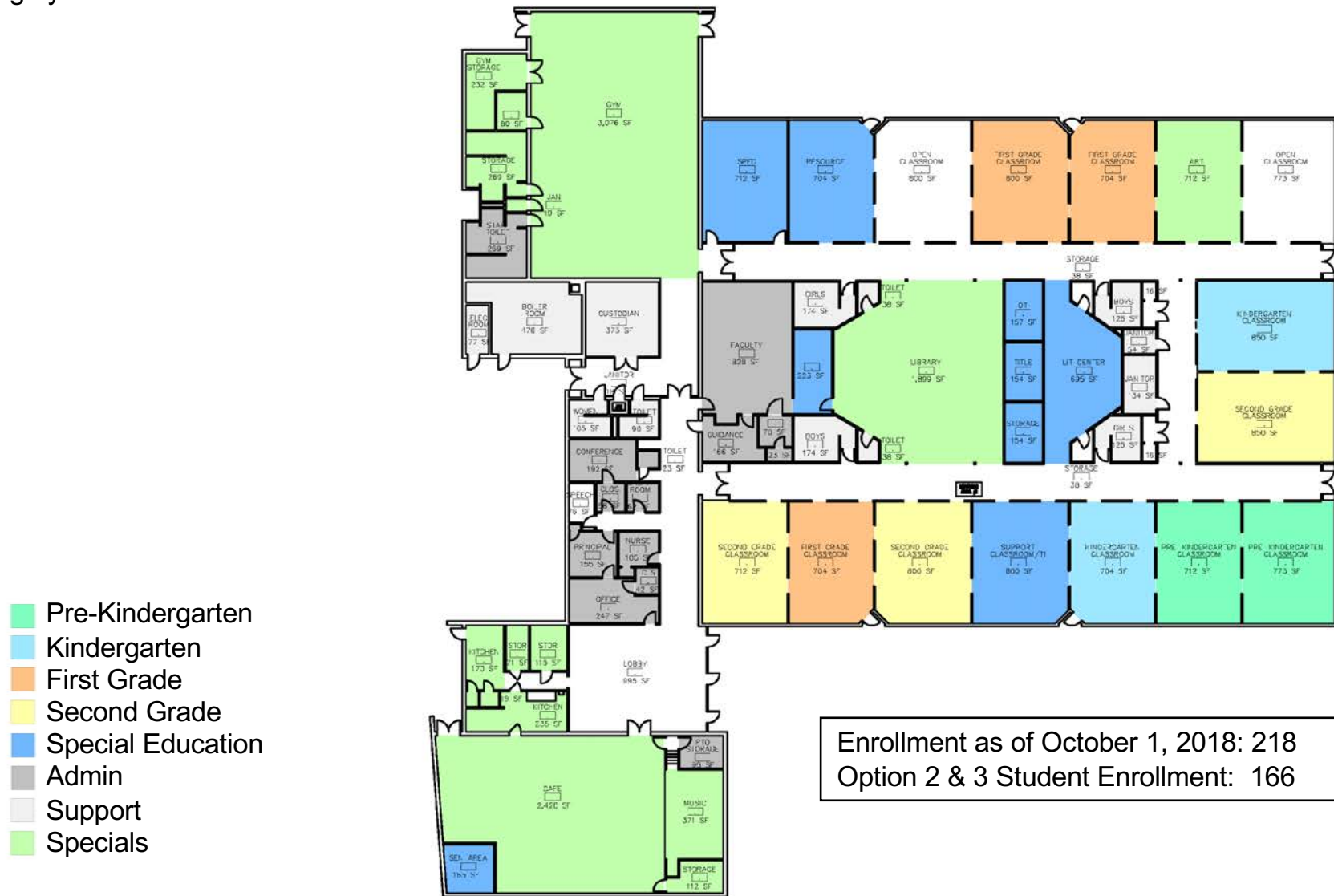
School	Grades	Proposed Area	Proposed Enrollment	Recommended Area per student	Area per student	Enrollment October 1, 2018	Cost			
							Facility Improvements	Space Reconfiguration	New Construction	Total
Abraham Lincoln School	PK - 2	35,384	166	140	213.2	218	\$3,007,873	\$0	\$0	\$3,007,873
Downeast School	PK - 2	39,000	228	140	171.1	293	\$0	\$0	\$16,758,800	\$16,758,800
Fourteenth Street School		22,682				140	\$0	\$0	\$0	\$0
Fruit Street School	PK - 2	39,381	256	140	153.8	325	\$5,398,685	\$721,250	\$0	\$6,119,935
Vine Street School	PK - 2	42,086	257	140	163.8	195	\$5,780,253	\$141,250	\$1,608,400	\$7,529,903
Fairmount School		45,179				267	\$0	\$0	\$0	\$0
Mary Snow School		38,200				231	\$0	\$0	\$0	\$0
James F. Doughty School	3 - 5	100,158	762	140	131.4	372	\$6,685,818	\$1,536,250	\$8,074,100	\$16,296,168
William S. Cohen School	6 - 8	121,369	778	160	156.0	406	\$7,226,627	\$875,000	\$15,841,300	\$23,942,927
Bangor High School	9 - 12	223,882	1215	185	184.3	1215	\$29,429,444	\$5,782,500	\$0	\$35,211,944
Reconstruct Cameron Stadium							\$0	\$0	\$7,057,700	\$7,057,700
Maintenance Storage Facility		5,900					\$0	\$0	\$2,065,000	\$2,065,000
		<b>178,533</b>	<b>3,662</b>			<b>3,662</b>	<b>\$57,528,700</b>	<b>\$9,056,250</b>	<b>\$49,340,300</b>	<b>\$115,925,250</b>

	Facility Improvements
	Space Reconfiguration
	New Construction
	Building Addition
	Discontinue

- Change Lincoln, Downeast, Fruit and Vine grade configurations to PK-2
- Reconstruct Downeast as PreK-2 on existing site.
- Discontinue use of Fourteenth, Fairmount and Snow.
- Construct 2,980 sf addition to Vine to provide space for PK -2 students from Fourteenth.
- Construct 21,100 sf addition to Doughty as intermediate schools (3-5) for entire district.
- Construct 41,270 sf addition to Cohen to create middle school (6-8) for entire district. (includes 1470 sf cafeteria addition)
- Reconstruct Cameron Stadium on Griffin Road site.
- Construct district maintenance storage facility on Griffin Road site.



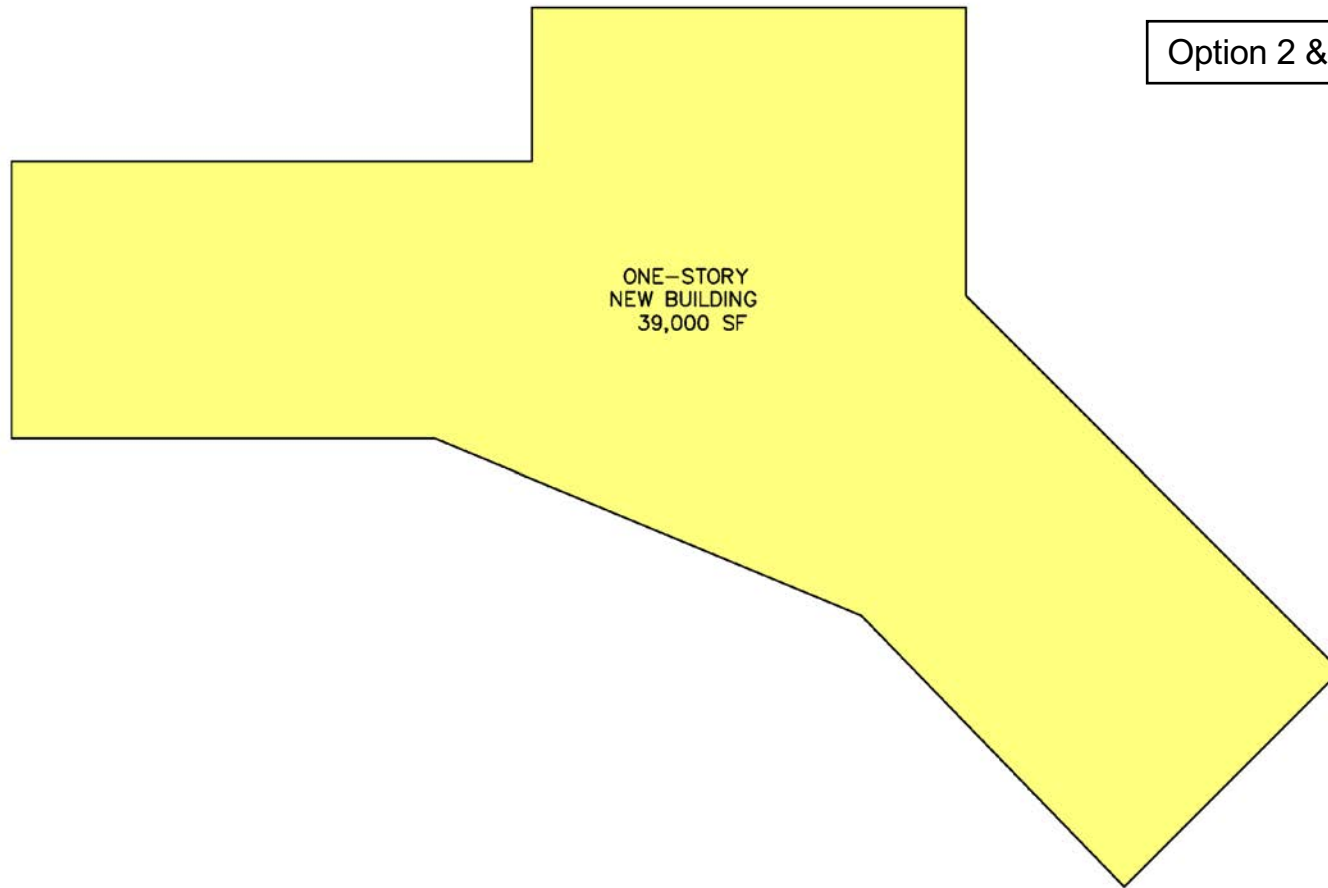
Grade configuration change from PK-3 to all day PK-2 to accommodate 166 students. Open classroom spaces from 3<sup>rd</sup> grade will allow for additional PK classroom and upgrades to special ed spaces. Third grade students relocate to James Doughty School.



## Option 3 – Abraham Lincoln School



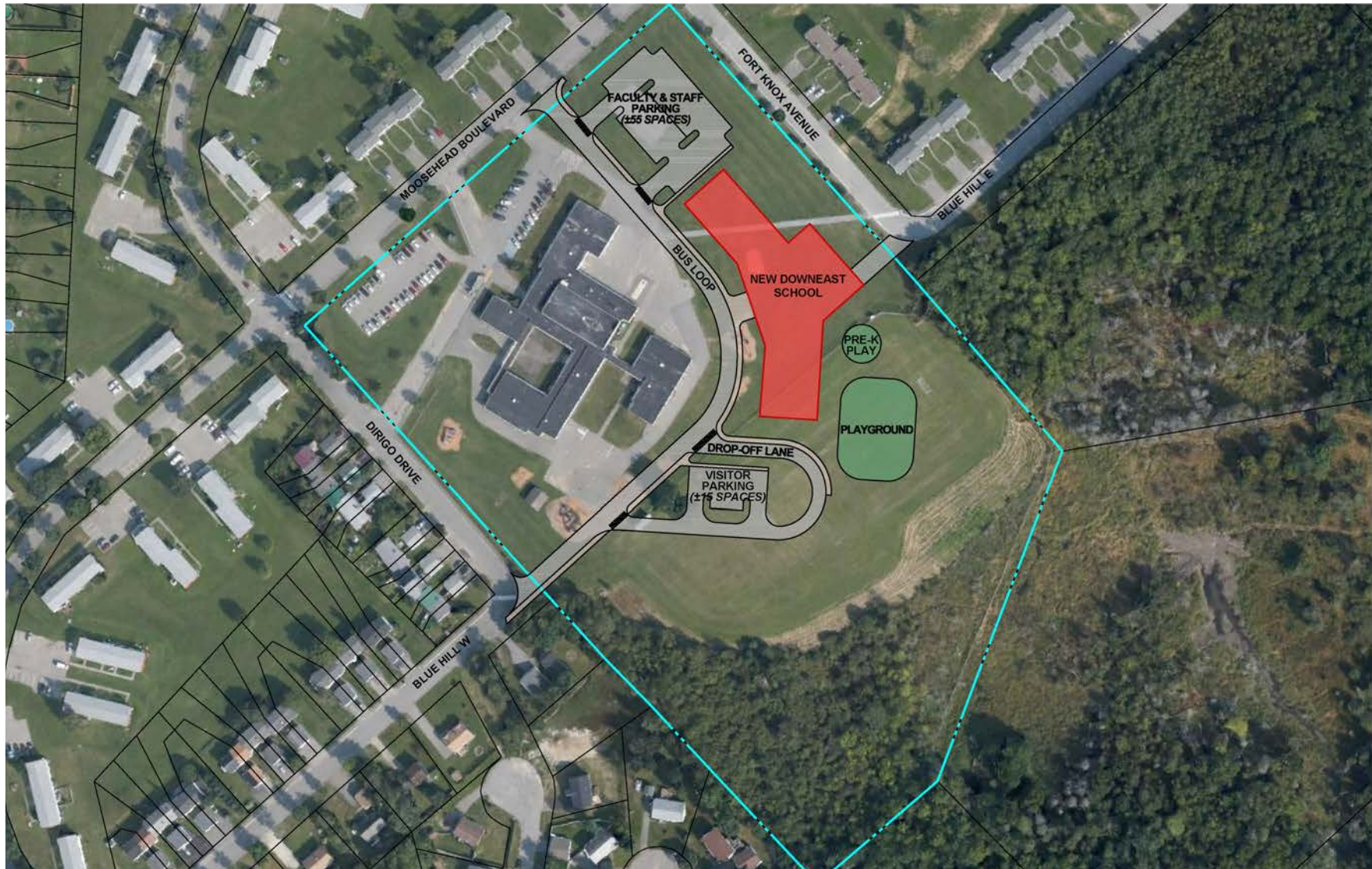
Grade configuration change from PK-3 to all day PK-2 to 228 students. Construct 39,000sf new building on the existing site while keeping the existing school operational during construction. Third grade students relocate to Vine Street School.



Option 2 & 3 Student Enrollment: 228



Sitework associated with the construction of the new building will include separate bus and parent drop-off/pick-up areas and parking for faculty, staff, and visitors. Separate play areas will be provided for Pre-K students and other grades. Sidewalk networks, site lighting, and a building service area will also be provided.



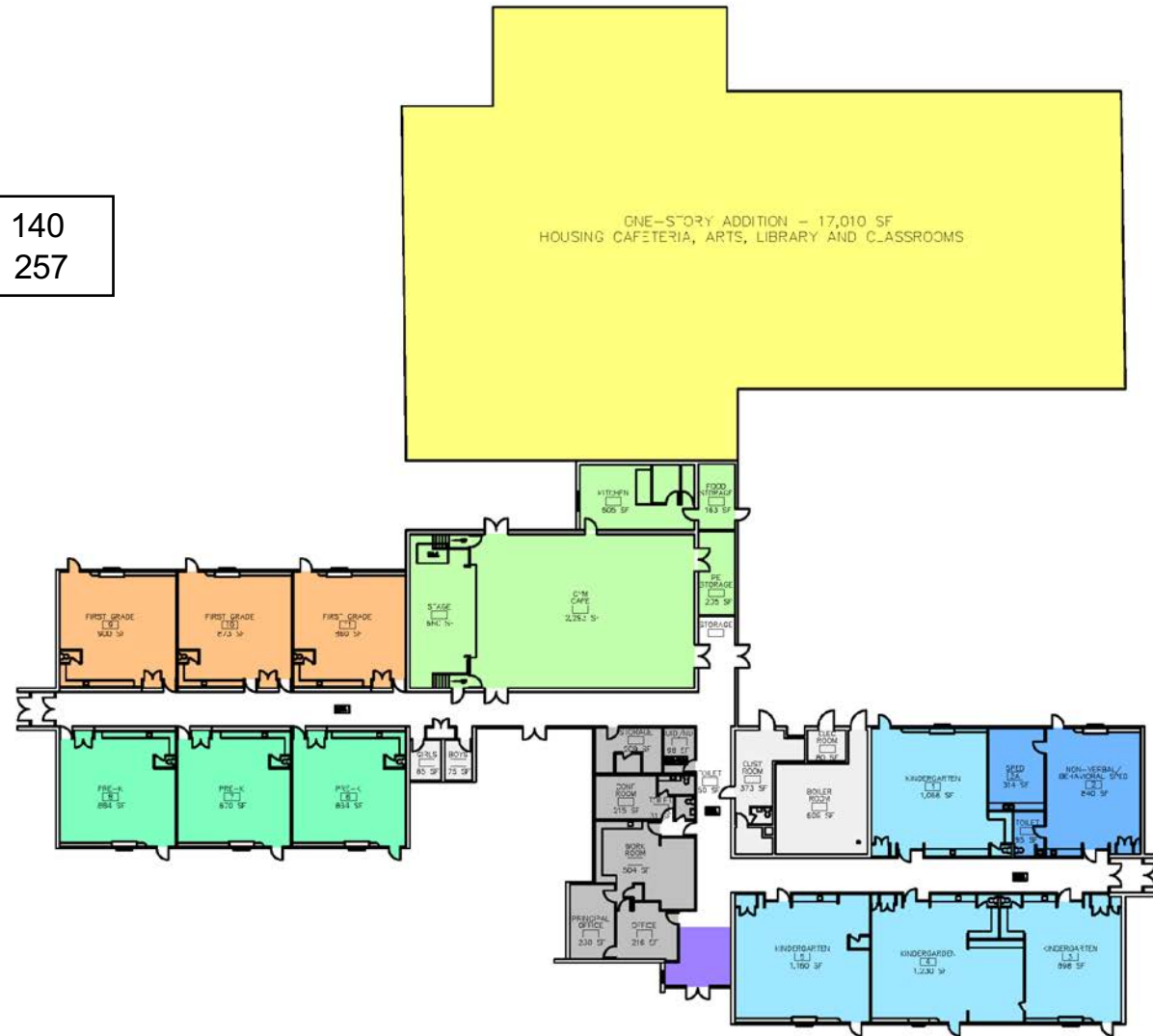
## Option 3 – Downeast School



Grade configuration change from PK-3 to all day PK-2 to accommodate 257 students including students from Vine Street School. Construct a 17,010sf addition to create space for 13 general classrooms, library, art, music, cafeteria and special ed spaces. Major interior renovations of 225sf would include a secure entry. Third grade students relocate to Vine School.

Enrollment as of October 1, 2018: 140  
 Option 3 Student Enrollment: 257

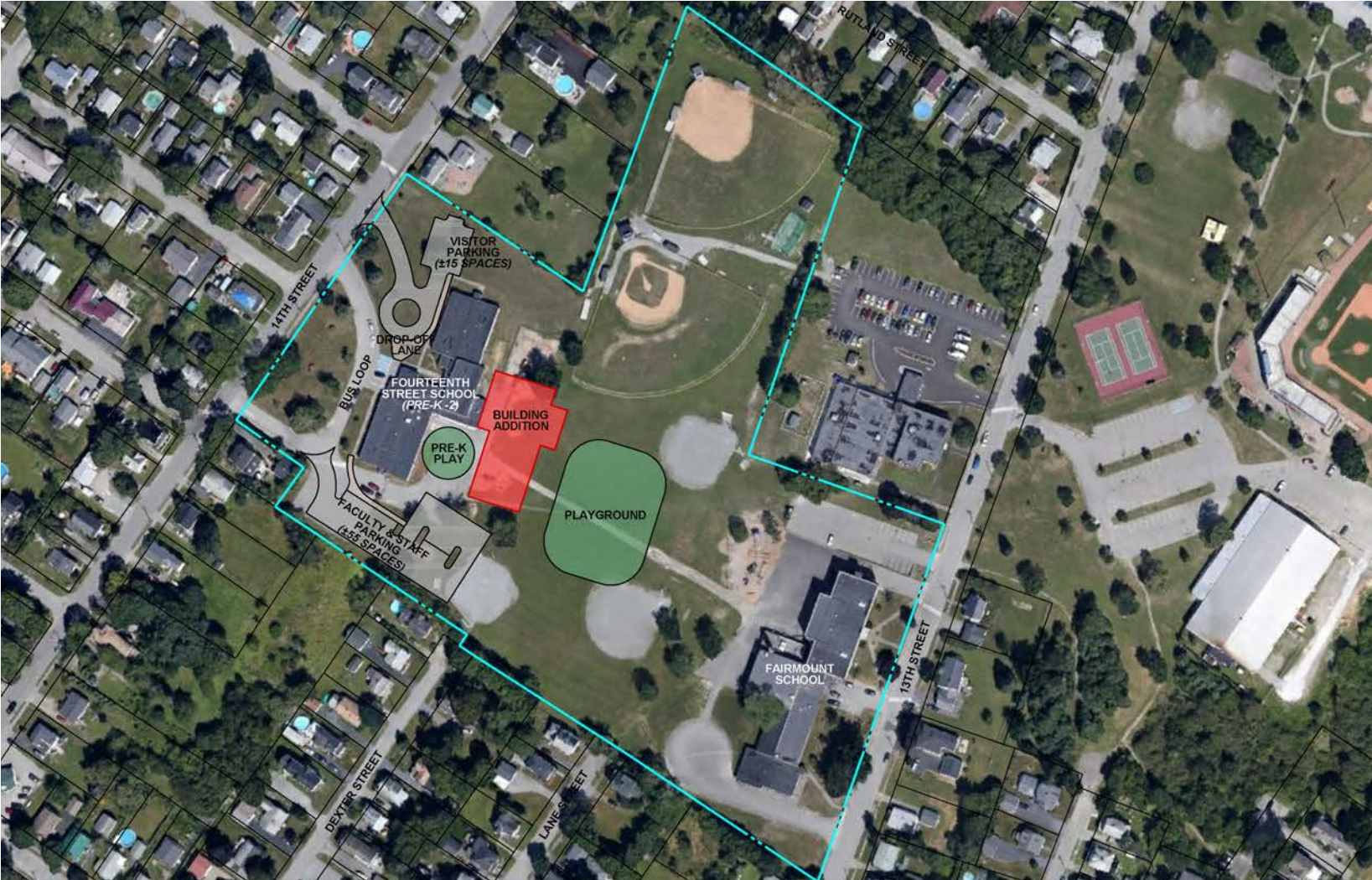
- Pre-Kindergarten
- Kindergarten
- First Grade
- Second Grade
- Special Education
- Admin
- Support
- Specials
- Major Renovation
- Addition



# Option 3 – Fourteenth School



The parking lot on the southerly side of the school will be expanded to provide space for approximately 55 cars. The existing bus loop will remain as-is and a new parent drop-off lane and a visitor parking lot with approximately 15 spaces will be constructed on the northerly side of the site. A Pre-K playground will be located in the courtyard space framed by the building addition and additional playground space will be located on the easterly side of the building.

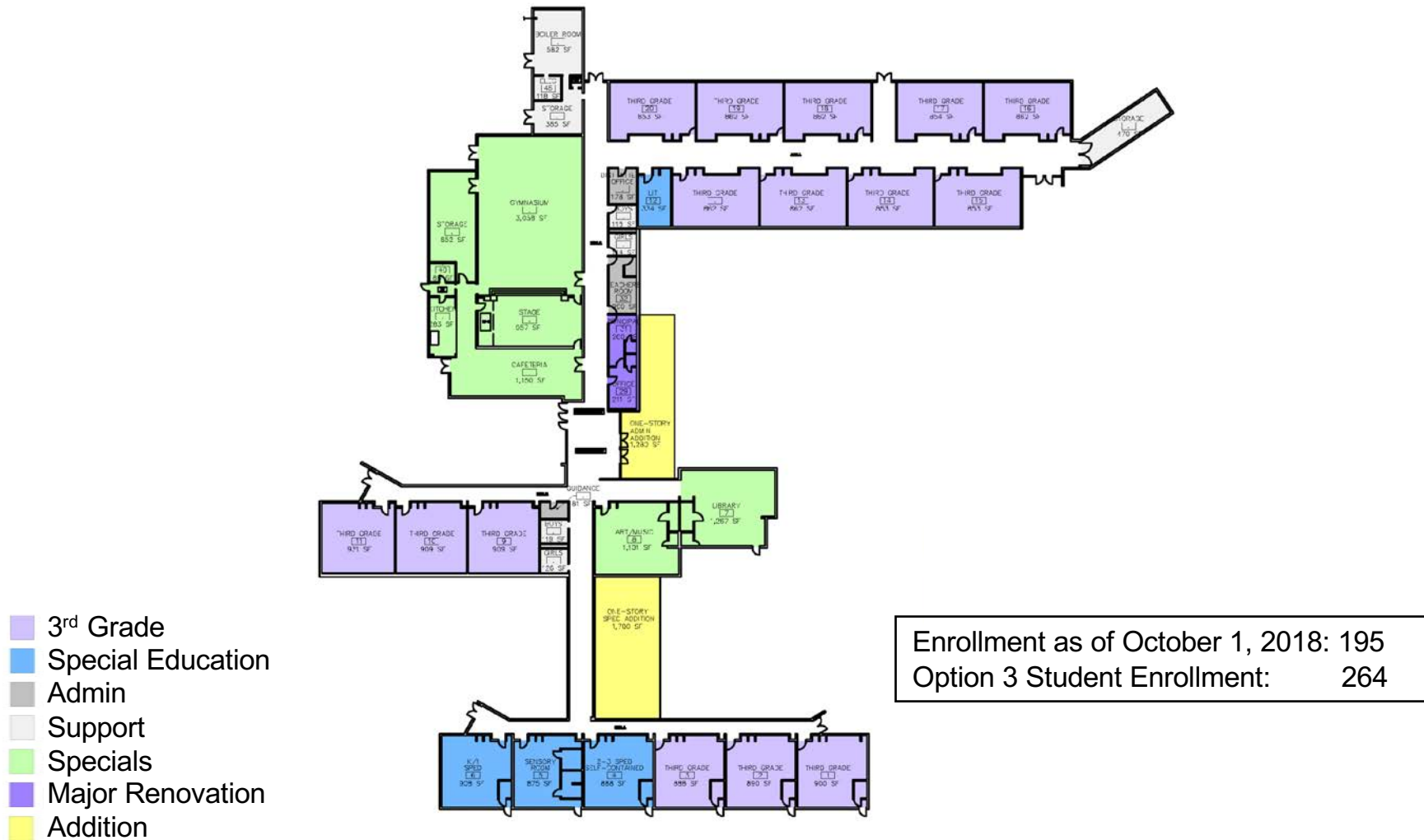


# Option 3 – Fourteenth School





Construct two additions totaling 2,980sf to create a third-grade school for the entire district to accommodate 264 students. This option would create a 3-5 campus on the Vine/Doughty site. Addition would include areas for special ed and additional office space and secure entry. Major interior renovations of 565sf include reorganization of the main office area. Pre-K through two relocate to Fourteenth Street School.



## Option 3 – Vine Street School



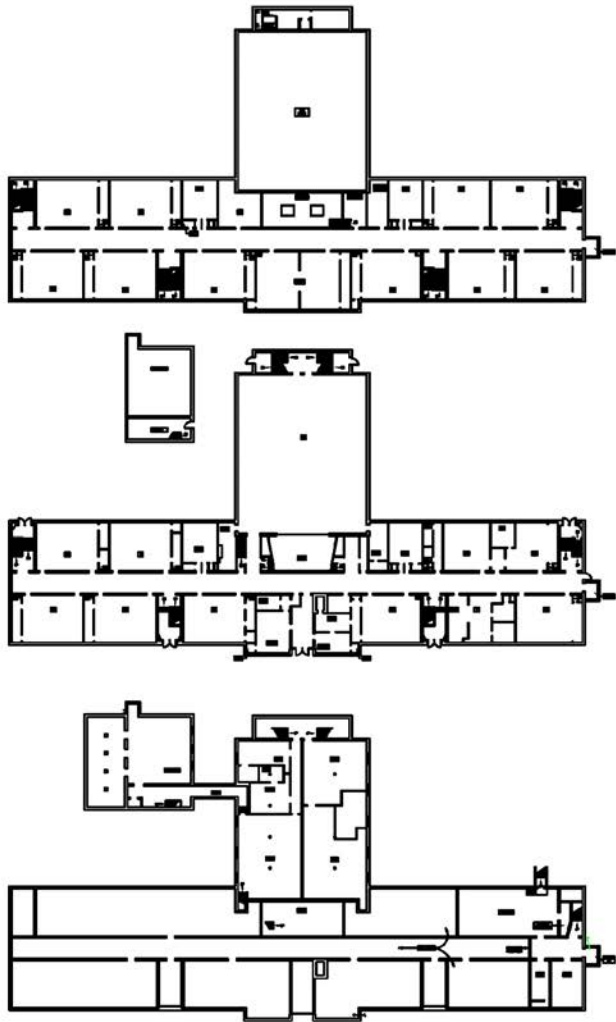
Parking will be provided for faculty, staff, and visitors in existing 31-car lot and in a proposed lot with approximately 24 spaces. Playground space will be located on the existing softball field and will be accessed via a pedestrian walkway that also connects to the Doughty School.



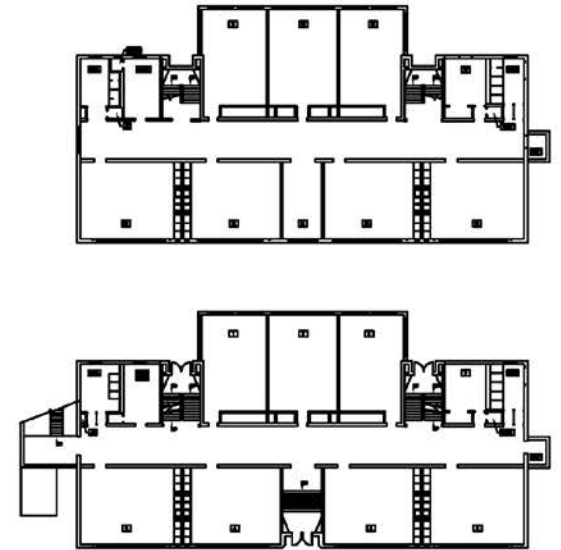
## Option 3 – Vine Street School



4<sup>th</sup> and 5<sup>th</sup> grade relocate to James Doughty School. Discontinue use of buildings.



Mary Snow School



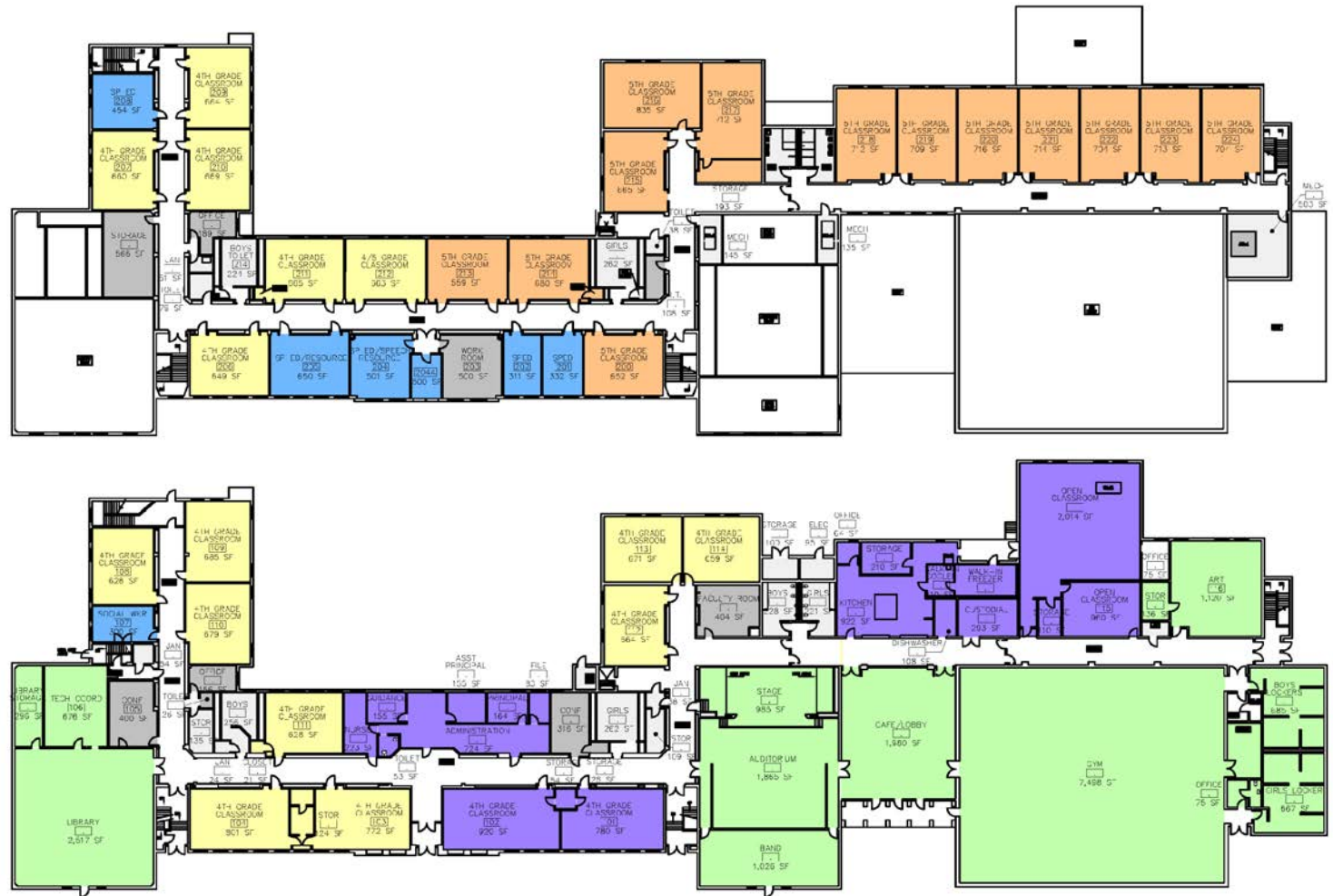
Fairmount School

## Option 3 – Mary Snow School & Fairmount School



Convert to a 4-5 Elementary School for the entire district to accommodate 498 students. Major interior renovations of 8,210sf would include relocating the main office across the hall to create a secure centralized entry/office suite, the existing office would be changed to classroom space, the existing weight and a French room would become a new cafeteria and the kitchen would be reworked to support the new cafeteria location.

Enrollment as of October 1, 2018: 372  
 Option 3 Student Enrollment: 498



# Option 3 – James Doughty School



The existing loop road around the rear of the school will be utilized to provide queuing space for approximately nine buses. Faculty, staff, and visitor parking will be accommodated in the existing parking areas and the existing parent drop-off lane at the front of the school will remain as-is. The play areas for the Doughty and Vine Street Schools will be connected by a pedestrian walkway and the existing fields will remain between the schools and to the rear of Doughty School.



# Option 3 – James Doughty School





Construct a bus loop for approximately nine buses and faculty and staff parking for approximately 80 cars on the Garland street (southerly) side of the building. Construct a parent drop-off lane, additional parking for faculty, staff and visitors, and a sidewalk network/courtyard on the westerly side of the building, adjacent to the new building entrance. Provide a new basketball court just north of the existing tennis courts. Cameron Stadium would be used as a sports facility to support the athletic program for the combined middle school.



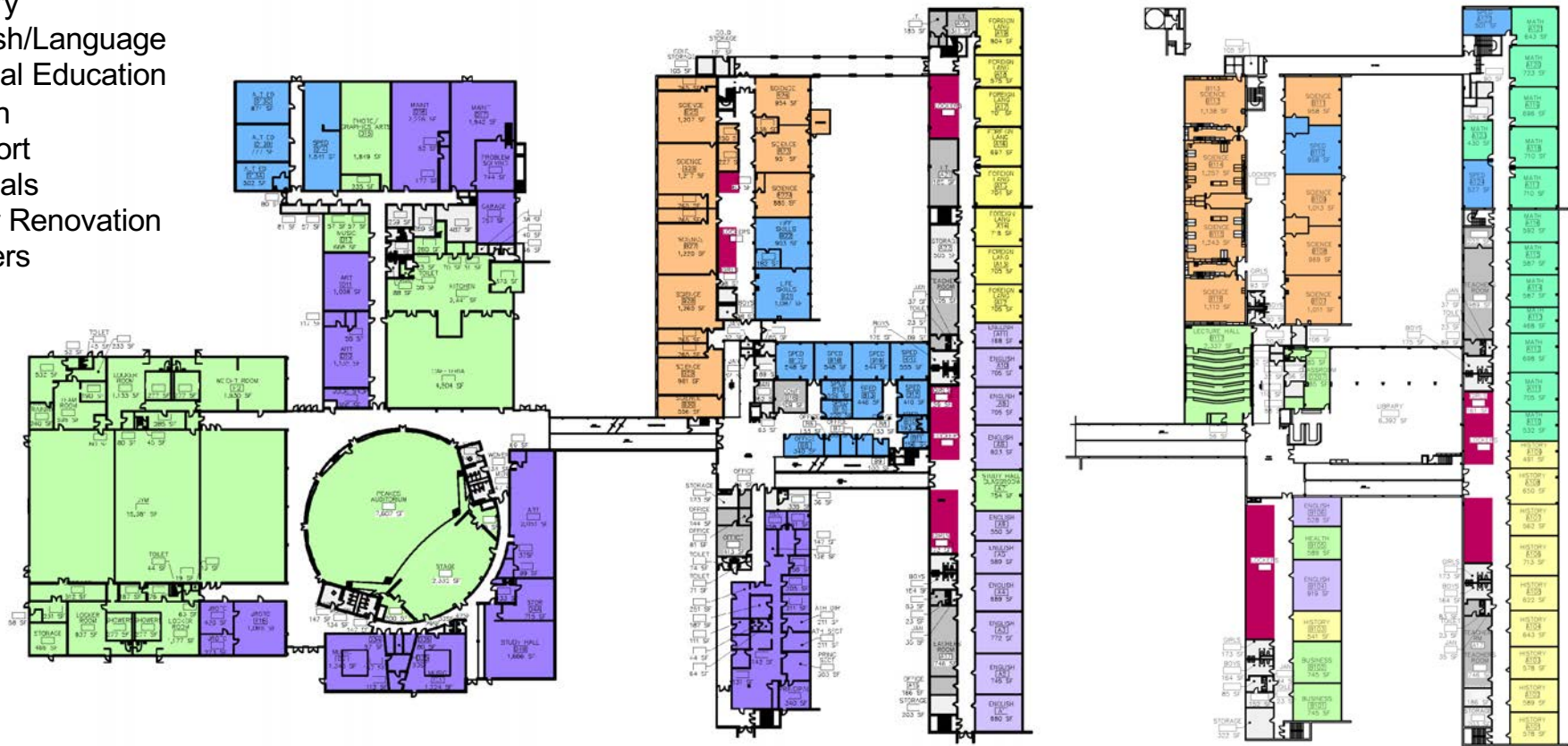
## Option 3 – William Cohen School



Major interior renovations of 23,130sf would include relocating the main office to the current JROTC and music rooms by the auditorium and creating a new secure main entrance. Music and theater storage would move to the current art and study hall room behind the auditorium. District maintenance would move out of the high school building to a new facility. Space made available by moving the main office and district maintenance will allow for relocation of JROTC and study hall, consolidation of art classrooms and expansion of the cafeteria. Within each of the classroom wings, several bays of lockers would be removed to create small group/collaboration rooms.

Enrollment as of October 1, 2018: 1,215  
 Option 2 & 3 Student Enrollment: 1,215

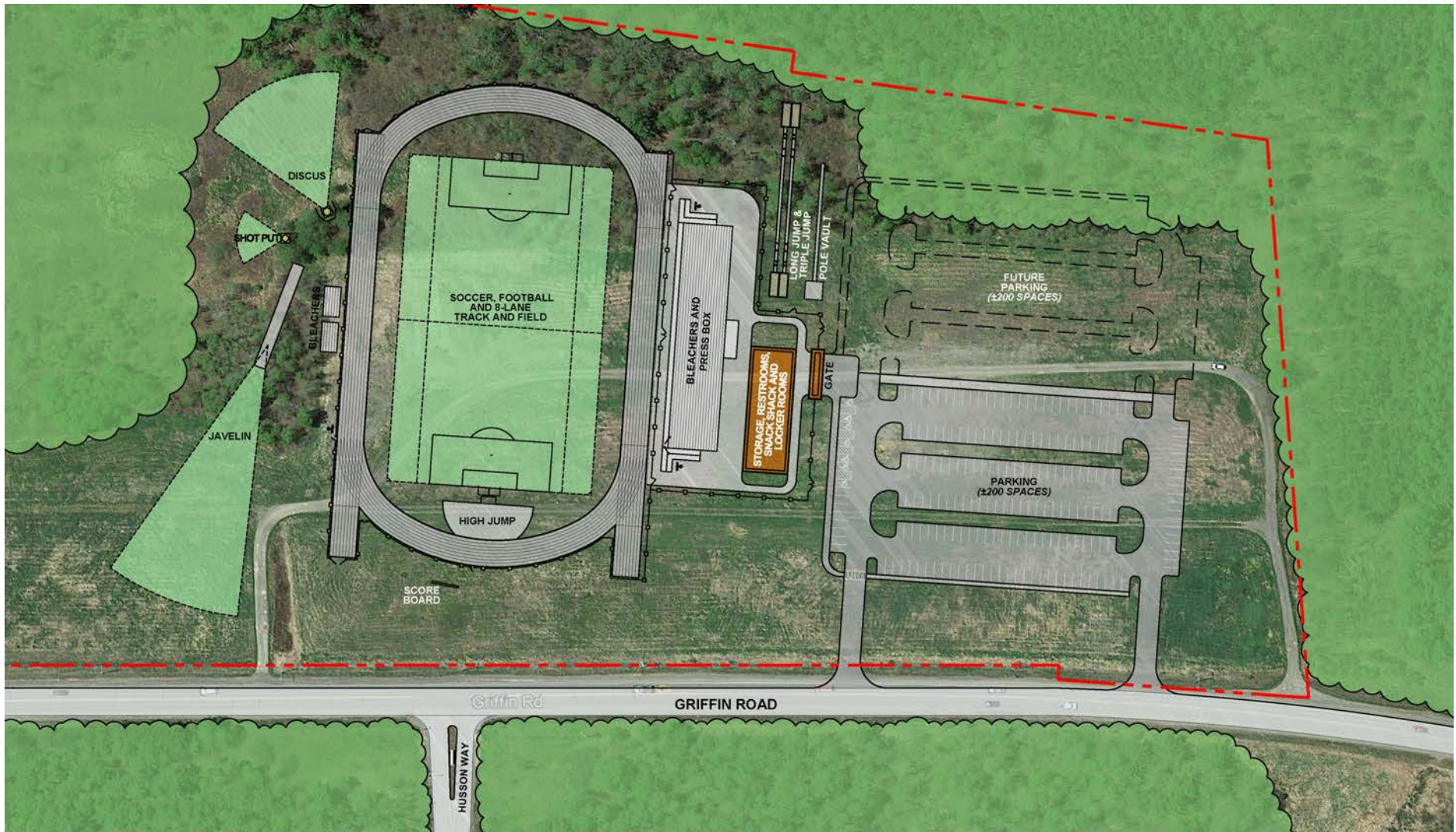
- Math
- Foreign Language
- Science
- History
- English/Language
- Special Education
- Admin
- Support
- Specials
- Major Renovation
- Lockers



# Option 3 – Bangor High School



Reconstruct stadium on Griffin Road site - Provide a lighted 8-lane track with integral football/soccer and space for field events outside of the track area. Relocate the existing bleachers to the new site and provide a controlled access gateway for spectators. Construct an approximately 6,700 SF building for storage, restrooms, locker rooms, and a snack shack and a paved parking area for approximately 200 cars with space for an additional 200 cars in the future.



## Option 3 – Cameron Stadium



Construct a 5,900sf building on the Griffin Road site for district maintenance and storage.



## Option 3 – Maintenance Storage Facility



## OPTION 3

School	Grades	Proposed Area	Proposed Enrollment	Recommended Area per student	Area per student	Enrollment October 1, 2018	Cost			
							Facility Improvements	Space Reconfiguration	New Construction	Total
Abraham Lincoln School	PK - 2	35,384	166	140	213.2	218	\$3,007,873	\$0	\$0	\$3,007,873
Downeast School	PK - 2	39,000	228	140	171.1	293	\$0	\$0	\$16,758,800	\$16,758,800
Fourteenth Street School	PK - 2	39,692	257	140	154.4	140	\$2,634,770	\$56,250	\$7,418,800	\$10,109,820
Fruit Street School	PK - 2	39,381	256	140	153.8	325	\$5,398,685	\$721,250	\$0	\$6,119,935
Vine Street School	3	42,086	264	140	159.4	195	\$5,780,253	\$141,250	\$1,538,900	\$7,460,403
Fairmount School		45,179				267	\$0	\$0	\$0	\$0
Mary Snow School		38,200				231	\$0	\$0	\$0	\$0
James F. Doughty School	4 - 5	79,058	498	140	158.8	372	\$6,685,818	\$2,052,500	\$0	\$8,738,318
William S. Cohen School	6 - 8	121,369	778	160	156.0	406	\$7,226,627	\$875,000	\$15,841,300	\$23,942,927
Bangor High School	9 - 12	223,882	1215	185	184.3	1215	\$29,429,444	\$5,782,500	\$0	\$35,211,944
Reconstruct Cameron Stadium							\$0	\$0	\$7,057,700	\$7,057,700
Maintenance Storage Facility		5,900					\$0	\$0	\$2,065,000	\$2,065,000
		<b>195,543</b>	<b>3,662</b>			<b>3,662</b>	<b>\$60,163,470</b>	<b>\$9,628,750</b>	<b>\$48,615,500</b>	<b>\$118,407,720</b>

	Facility Improvements
	New Construction
	Space Reconfiguration
	Building Addition
	Discontinue

- Change Lincoln, Downeast, Fourteenth and Fruit grade configurations to PK-2
- Reconstruct Downeast as PreK-2 on existing site.
- Construct 17,010 sf addition to Fourteenth Street to provide space for PK -2 students from Vine.
- Create intermediate school campus (3-5) at Doughty/Vine for entire district.
- Repurpose Vine as 3rd grade school for entire district and construct 2,980 sf addition.
- Discontinue use of Fairmount and Snow.
- Repurpose Doughty as intermediate school (4-5) for entire district.
- Construct 41,270 sf addition to Cohen to create middle school (6-8) for entire district. (includes 1470 sf cafeteria addition)
- Reconstruct Cameron Stadium on Griffin Road site.
- Construct district maintenance storage facility on Griffin Road site.



## OPTION 1 – \$80,583,964

### All Schools – (Option 1, 1.1, 2 & 3)

- Implement recommended facility improvements

## OPTION 1.1 - \$90,968,229

### Downeast School

- Construct 40,645sf new building on the existing site
- 293 students

### All Remaining Schools – (Option 1, 1.1, 2 & 3)

- Implement recommended facility improvements

### Graphic Key

#### Facility Improvements

#### Space Reconfiguration

#### New Construction

#### Building Addition

#### Discontinue

## OPTION 2 - \$115,925,250

### Abraham Lincoln School

- Grade configuration change from PK-3 to all day PK-2
- Third grade students relocate to James Doughty School
- 166 students

### Downeast School – (Option 2 & 3)

- Construct 39,000sf new building on the existing site
- Grade configuration change from PK-3 to all day PK-2
- 228 students

### Fourteenth Street School

- Discontinue use of building
- PK-2 students relocate to Vine Street School
- Third grade students relocate to James Doughty School

### Fruit Street School

- Renovate 2,885 sf
- Grade configuration change from PK-3 to all day PK-2
- Third grade students relocate to James Doughty School
- 256 students

### Vine Street School

- Construct a 2,980sf addition and renovate 565sf
- Grade configuration change from PK-3 to all day PK-2
- Third grade students relocate to James Doughty School
- 257 students

### Mary Snow and Fairmount Schools – (Option 2 & 3)

- Discontinue use of buildings
- 4<sup>th</sup> and 5<sup>th</sup> grade relocate to James Doughty School

### James Doughty School

- Construct a 21,100sf addition and renovate 6,145sf
- Create a 3-5 Elementary School for the entire district
- 762 students

### William Cohen School – (Option 2 & 3)

- Construct a 41,270sf addition and renovate 3,500sf
- Create a 6-8 Middle School for the entire district
- 778 students

### Bangor High School – (Option 2 & 3)

- Relocate administration and main entrance and renovate 14,410sf
- 1215 students

### Cameron Stadium – (Option 2 & 3)

- Reconstruct on Griffin Road site with 8-lane track

### Maintenance Storage Facility – (Option 2 & 3)

- Construct district maintenance building on Griffin Road Site

### All Remaining Schools – (Option 1, 1.1, 2 & 3)

- Implement recommended facility improvements

## OPTION 3 - \$118,407,720

### Abraham Lincoln School

- Grade configuration change from PK-3 to all day PK-2
- Third grade students relocate to Vine Street School
- 166 students

### Downeast School – (Option 2 & 3)

- Construct 39,000sf new building on the existing site
- Grade configuration change from PK-3 to all day PK-2
- 228 students

### Fourteenth Street School

- Construct a 17,010sf addition and renovate 225sf
- Grade configuration change from PK-3 to all day PK-2 including students from Vine Street School
- Third grade students relocate to Vine School
- 257 students

### Fruit Street School

- Grade configuration change from PK-3 to all day PK-2
- Third grade students relocate to Vine Street School
- 256 students

### Vine Street School

- Construct a 2,980sf addition and renovate 565sf
- Create a Third Grade School for the entire district
- Create a 3-5 campus on the Vine/Doughty site
- Pre-K through two relocate to Fourteenth Street School
- 264 students.

### Mary Snow and Fairmount Schools – (Option 2 & 3)

- Discontinue use of buildings
- 4<sup>th</sup> and 5<sup>th</sup> grade relocate to James Doughty School

### James Doughty School

- Renovate 8,210sf
- Create a 4-5 Elementary School for the entire district
- 498 students

### William Cohen School - (Option 2 & 3)

- Construct a 41,270sf addition and renovate 3,500sf
- Create a 6-8 Middle School for the entire district
- 778 students

### Bangor High School – (Option 2 & 3)

- Relocate administration and main entrance and renovate 14,410sf
- 1215 students

### Cameron Stadium – (Option 2 & 3)

- Reconstruct on Griffin Road site with 8-lane track

### Maintenance Storage Facility – (Option 2 & 3)

- Construct district maintenance building on Griffin Road Site

### All Remaining Schools – (Option 1, 1.1, 2 & 3)

- Implement recommended facility improvements

# Option Comparison Final Summary



# THANK YOU



OAK POINT  
ASSOCIATES

architecture  
engineering  
planning

PROJECT TARGETS:  
Energy  
EVI - TARGET 50kWh/ST/yr  
ventilation  
ASAP 62.1 + (+30%)

for 50% of  
classrooms.  
daylight autonomy

Monitoring  
Loud or other dispa  
in entrance  
analysis