

DEMOGRAPHIC STUDY
FOR THE
WAYNE TOWNSHIP
PUBLIC SCHOOLS



June 15, 2026

STATISTICAL FORECASTING

- Provide demographic services for school districts in the New York-New Jersey metropolitan area since 1998.
- Performed demographic studies for approximately 225 school districts in NY & NJ.
- Demographic consultant for the NYC Public Schools since 2006.

RICHARD S. GRIP ED.D.

- Executive Director
- Doctorate from Rutgers University Graduate School of Education in Educational Statistics and Measurement
- Numerous publications on school demography and presentations nationally
- Testified as an expert witness in school demography in several Administrative Law court hearings.

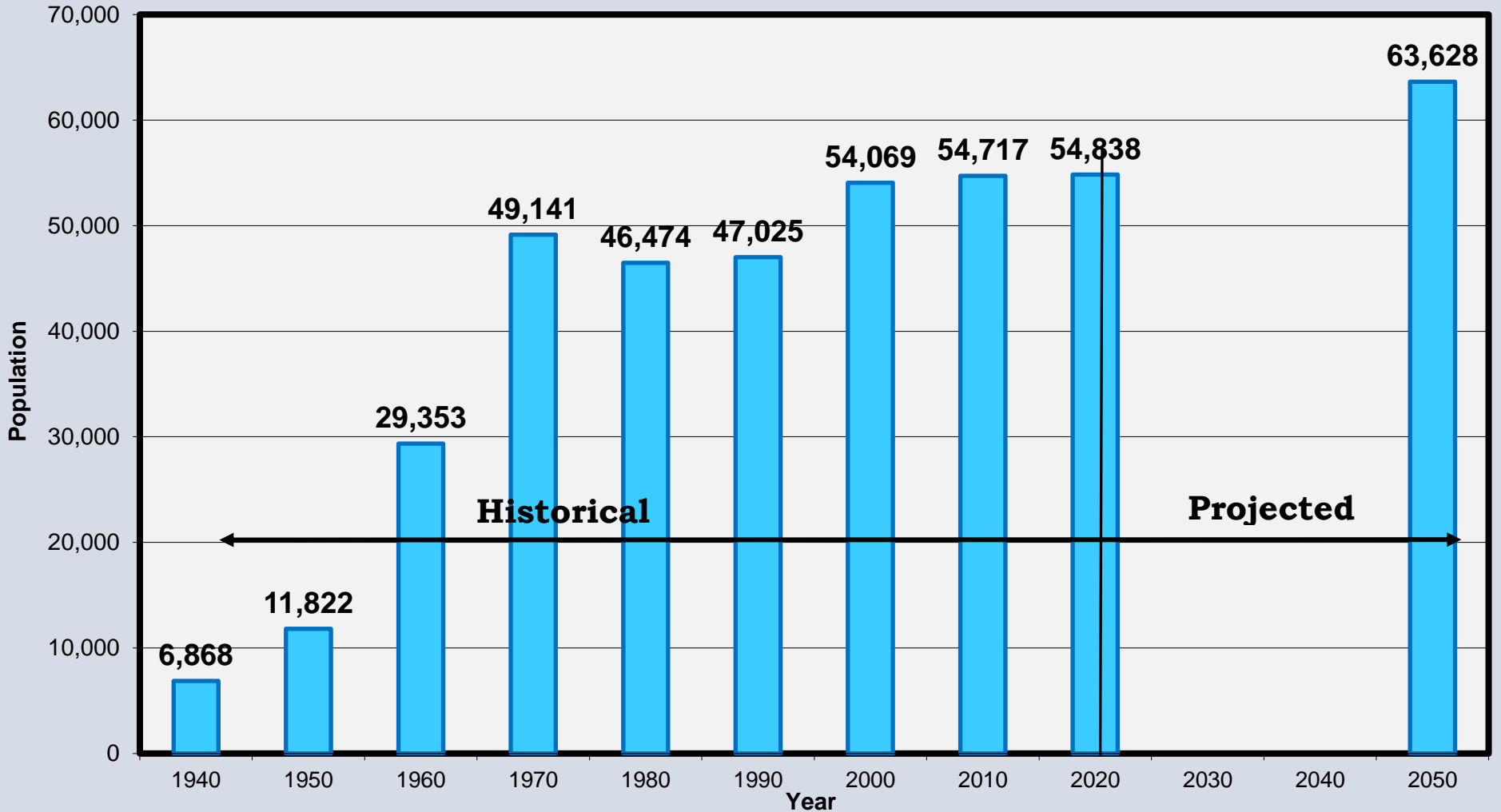
DAVID C. HESPE

- Former two-time Commissioner of Education.
- Former President and CEO of Burlington County College.
- Former Chair/Associate Professor of the Educational Leadership Department at Rowan University.
- Former Interim Superintendent and Assistant Superintendent of Willingboro School District.
- Former Assistant Counsel for the New Jersey Office of Legislative Services.

PURPOSE OF THE STUDY

- Project grade-by-grade enrollments from 2025-26 through 2029-30, a 5-year period. Study completed in August 2025.
- Analyze community population trends, demographic characteristics and age structure, birth counts, and fertility rates
- Examine historical enrollment trends districtwide, by grade configuration, and by school
- Determine historical birth counts for each elementary attendance area
- Research new housing starts and analyze their impact on the school district

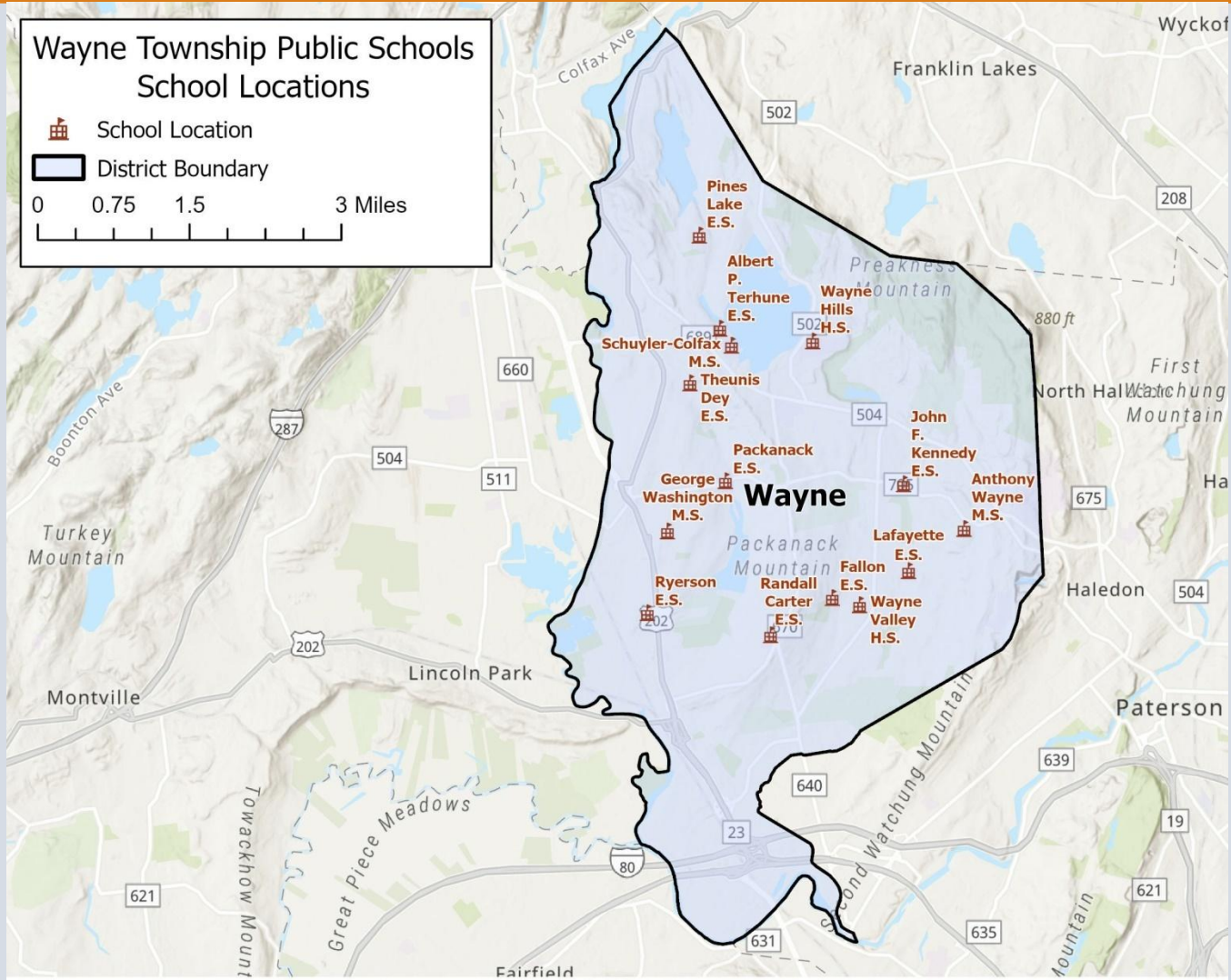
WAYNE TOWNSHIP HISTORICAL AND PROJECTED POPULATIONS 1940-2050



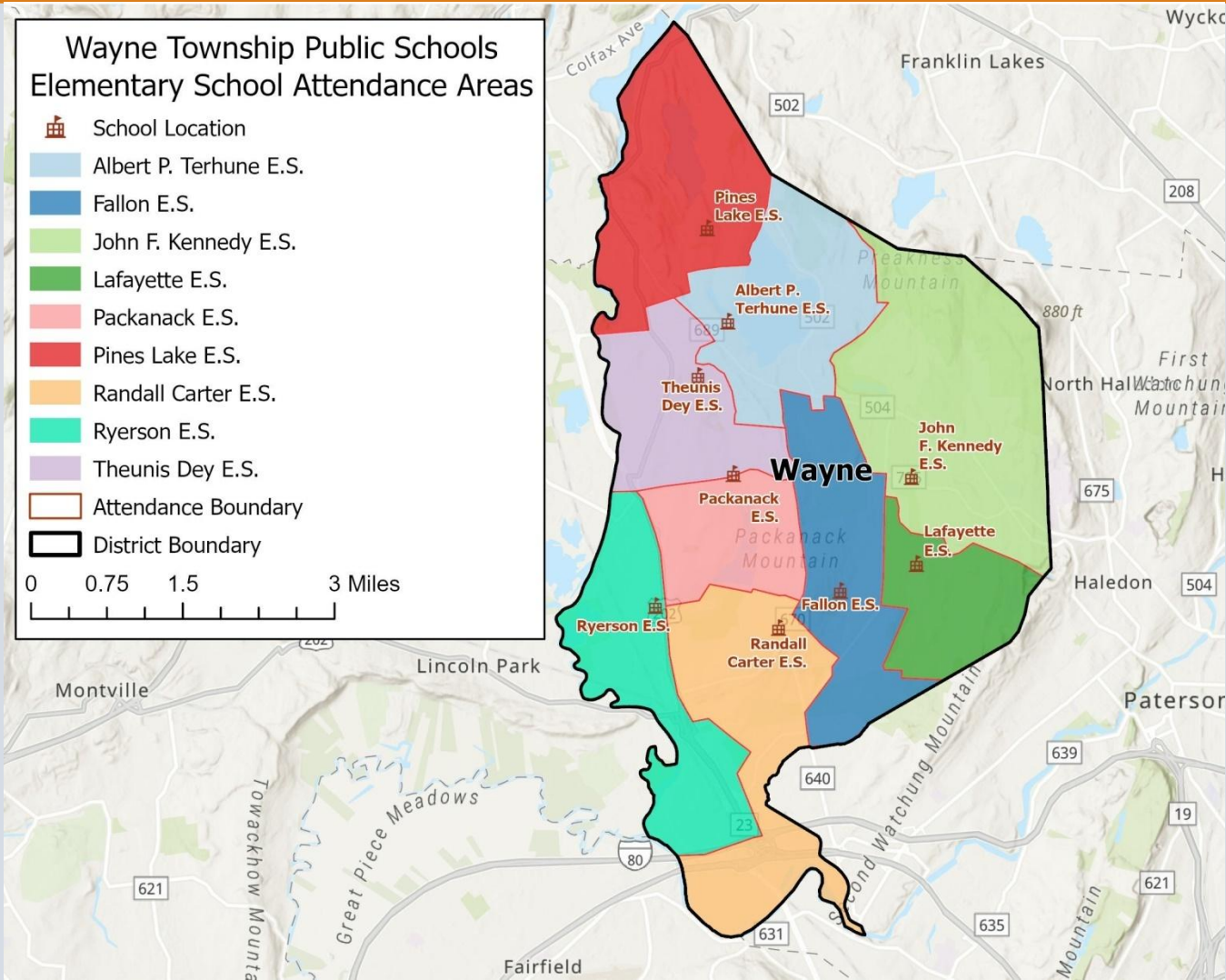
WAYNE TOWNSHIP DEMOGRAPHIC PROFILE

- 72.9% White, 11.7% Hispanic, 9.4% Asian, and 3.0% Black in 2020 (increasing Asian and Hispanic populations and declining White population from 2010)
- Median age = 44.0 years (NJ= 39.9 years)
- 20.0% of population is foreign-born (NJ=24.2%). India and Peru are the largest sources.
- Bachelor's Degree or Higher = 56.8% (NJ= 43.8%)
- Median household income = \$152K (NJ= \$100K)
- 19,396 housing units, of which 77.3% are 1-unit homes (attached or detached)
- 21.6% of housing units are renter-occupied (NJ= 38.7%).
- Median value of owner-occupied unit = \$597K (NJ= \$461K).

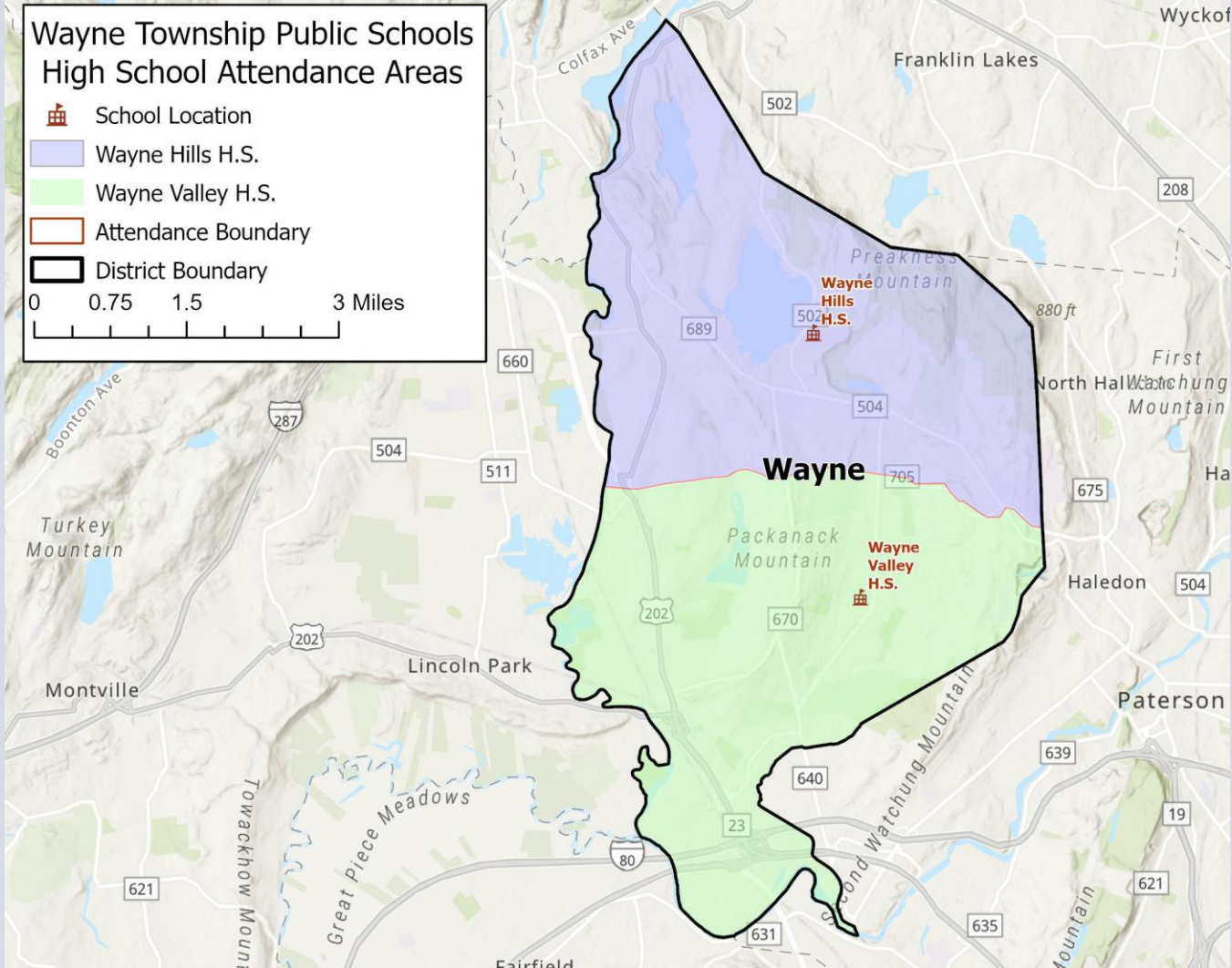
SCHOOL LOCATIONS



ELEMENTARY ATTENDANCE AREAS



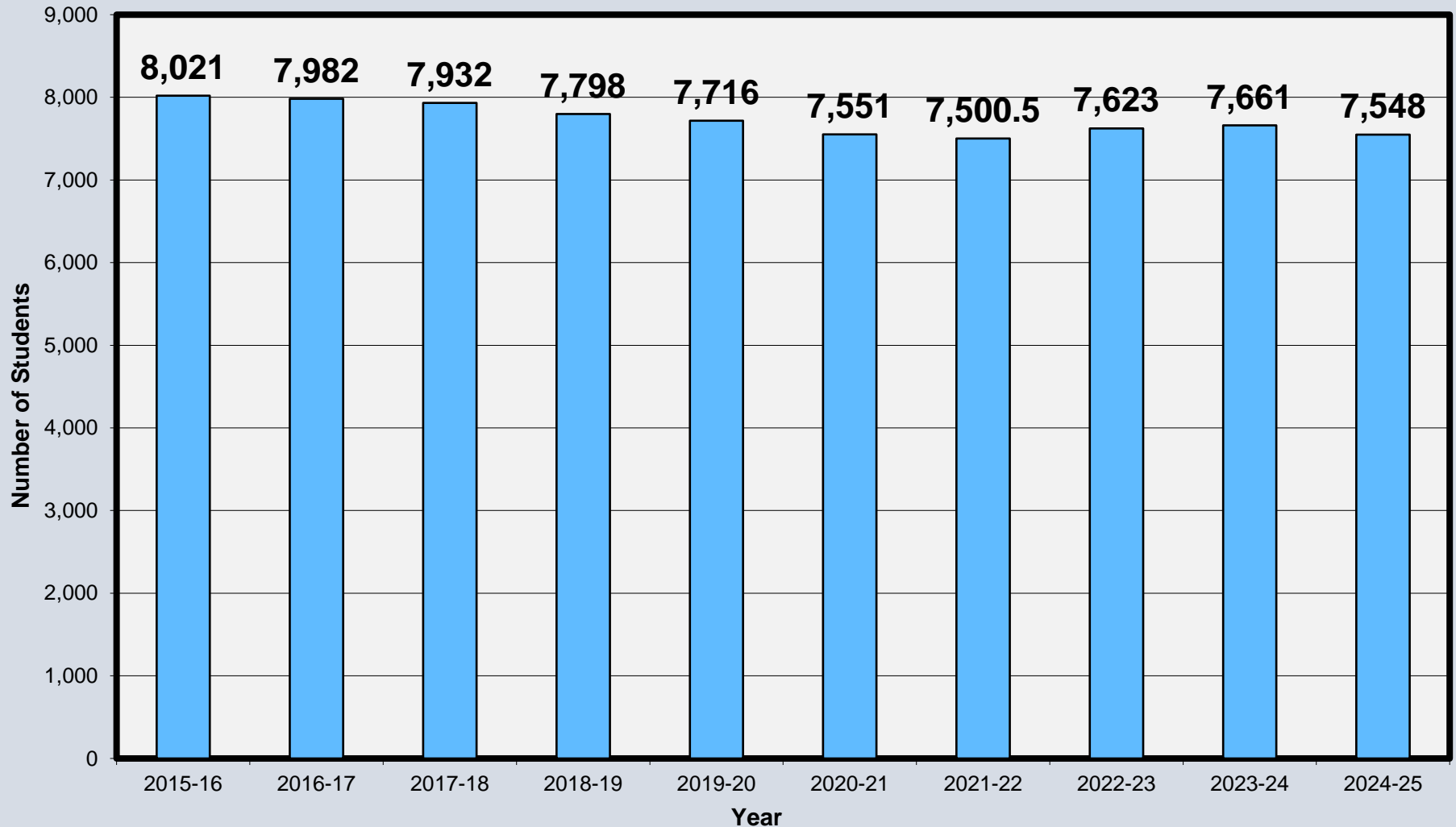
HIGH SCHOOL ATTENDANCE AREAS



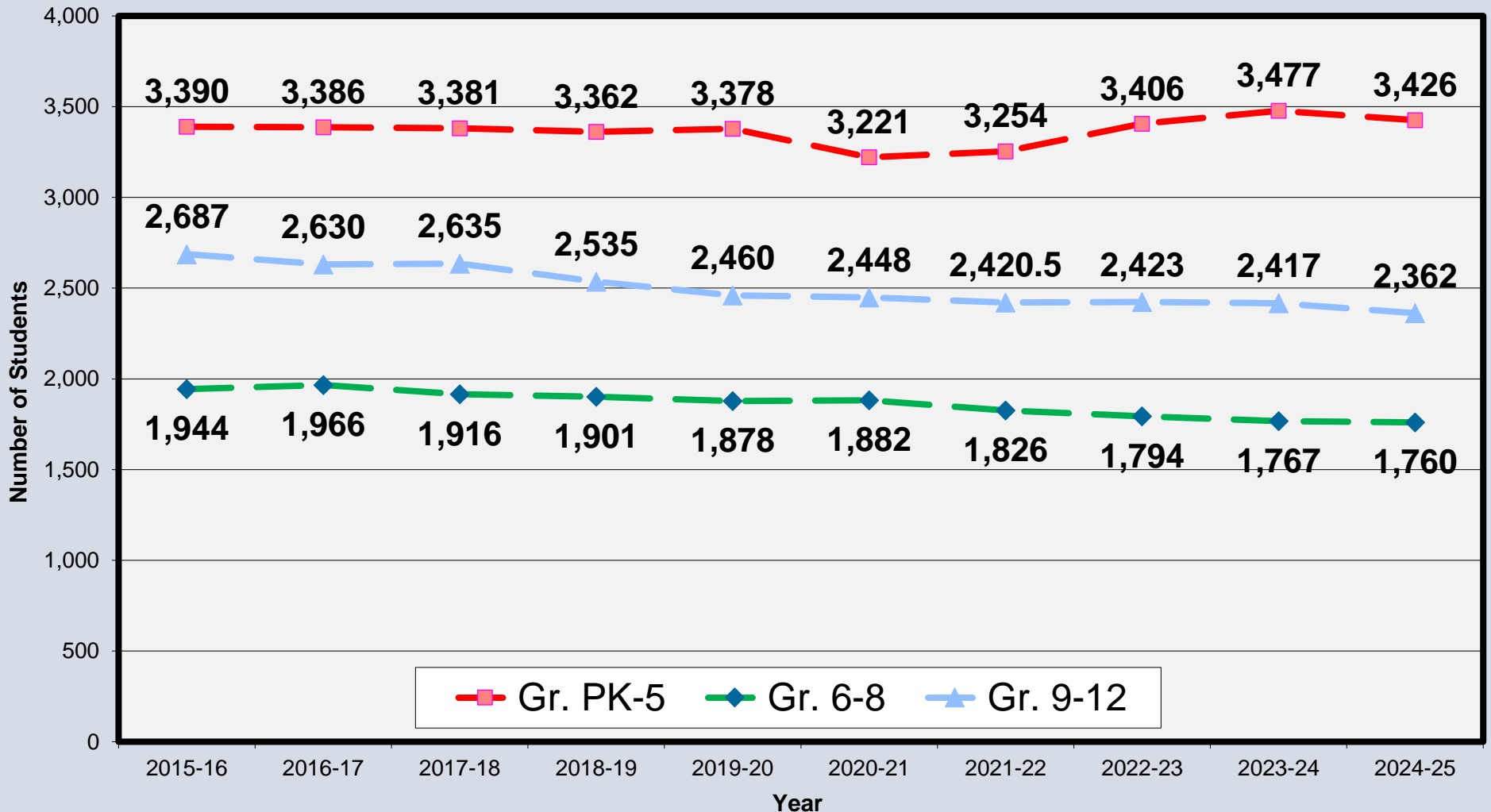
HISTORICAL ENROLLMENT TRENDS

- District's 2024-25 enrollment (PK-12) on 10/15/24 was 7,548.
- 2015-16 enrollment = 8,021 (decline of 473 students in 10 years)
- Enrollments declined through 2021-22 before reversing trend and stabilizing.
- Cohort-Survival Ratio Method (CSR) was used to project enrollments five years into the future.

HISTORICAL ENROLLMENTS (PK-12) 2015-16 TO 2024-25



HISTORICAL ENROLLMENTS BY GRADE CONFIGURATION 2015-16 TO 2024-25



ENROLLMENT PROJECTION METHOD

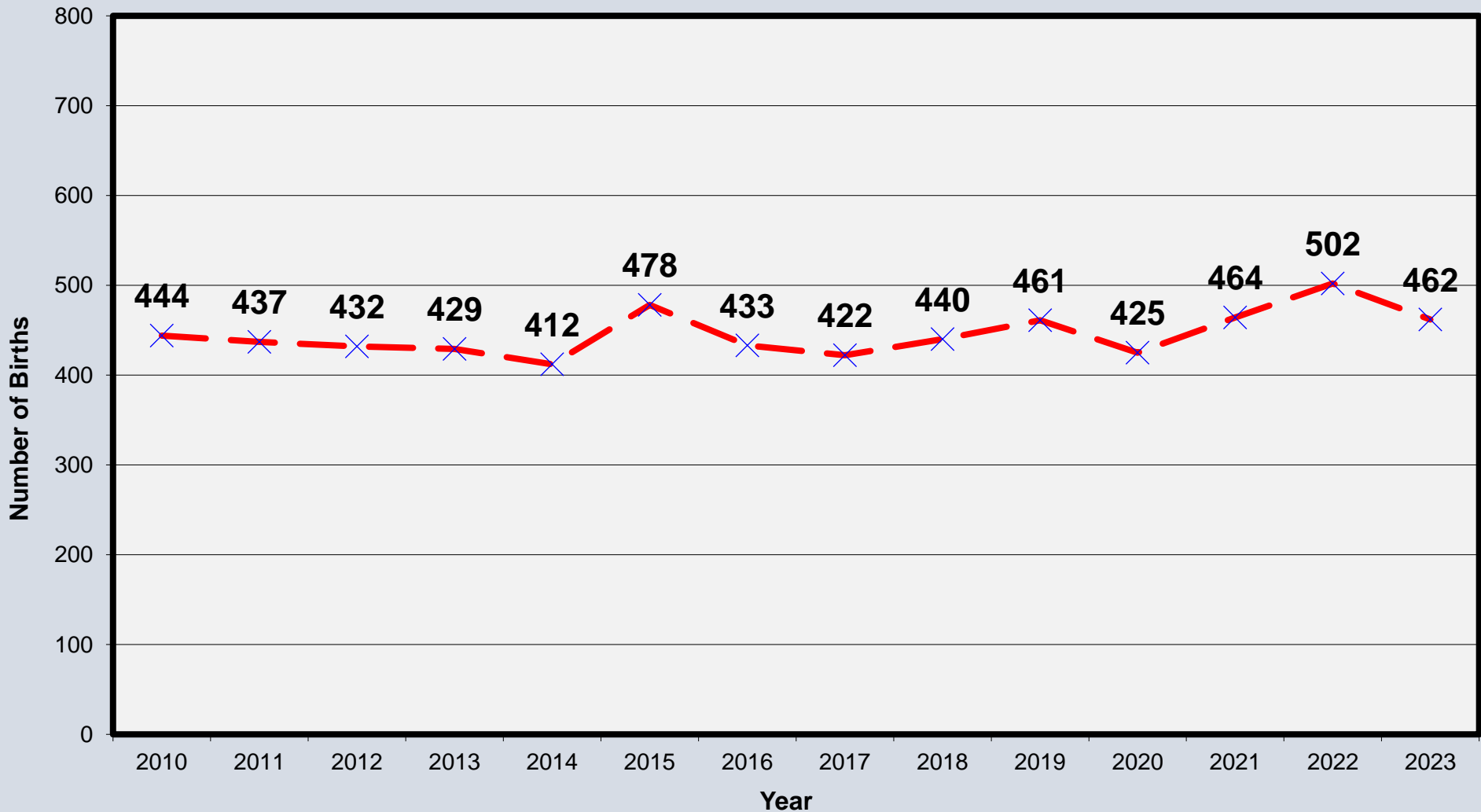
COHORT SURVIVAL RATIO

- Ratios are calculated for each grade progression. Ex. 100 1st graders in 2023-24 become 95 2nd graders in 2024-25 = 0.95)
- Ratios above 1.000 = inward migration, below 1.000 = outward migration
- Survival ratios were computed for ten historical years. 10 of 13 average ratios were above 1.000 indicating net inward migration.
- Two survival ratios in 2020-21 (1st year of COVID-19 pandemic) were the lowest value in the last decade and were in the lower elementary school grades.
- Average ratios were applied to current enrollments to project future enrollments.

BIRTH COUNTS

- Births are used to project kindergarten students 5 years later.
- Analyzed birth data from 2010-2023.
- Births declined from 2010-2014 before reversing trend and stabilizing.
- 462 births in 2023, which is higher (+18) than 2010 (444).

WAYNE TOWNSHIP HISTORICAL BIRTH COUNTS 2010-2023



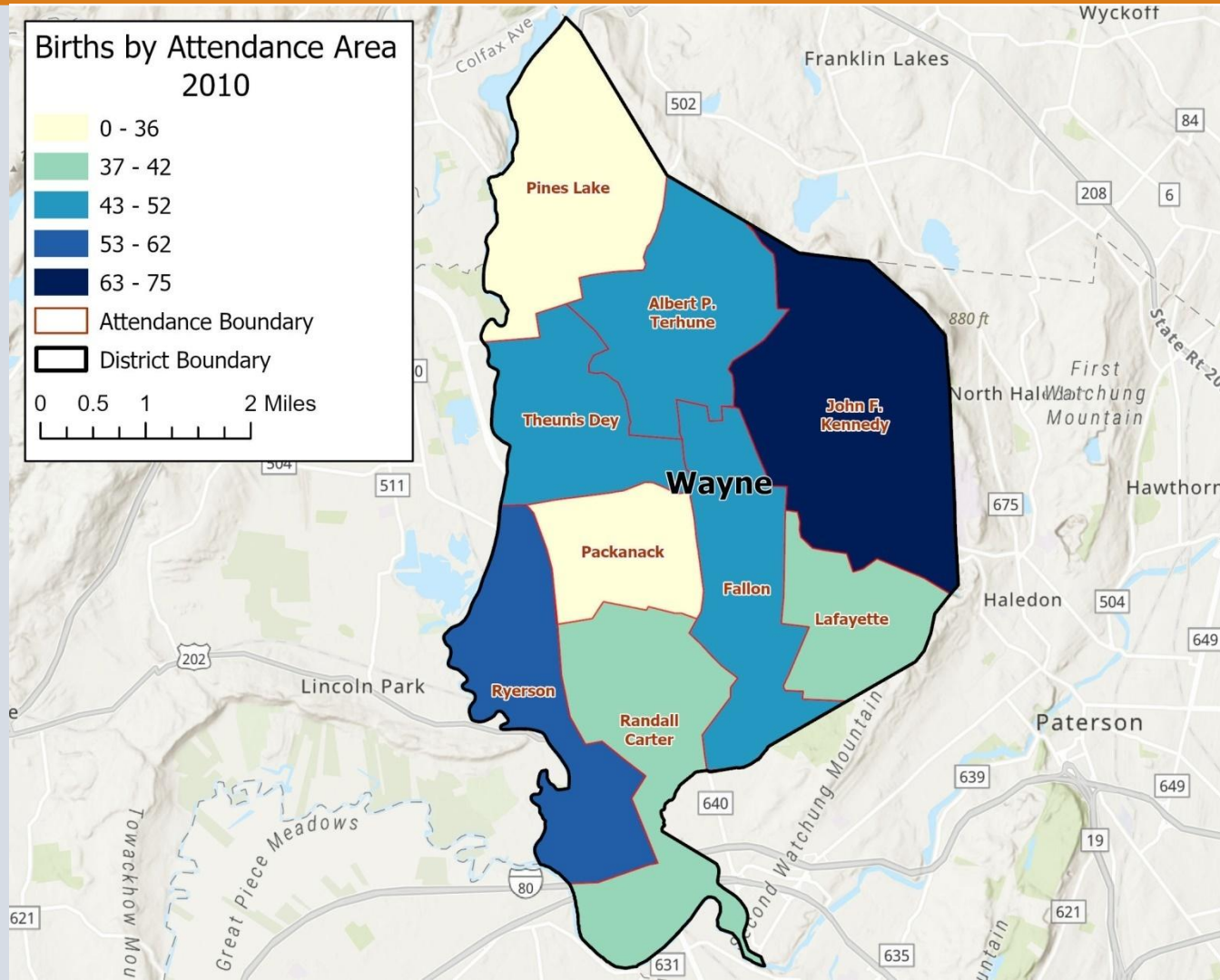
BIRTH COUNTS AND BIRTH-TO-KINDERGARTEN SURVIVAL RATIOS

Birth Year	Number of Births Wayne Township	Kindergarten Students Five Years Later	Birth-to-Kindergarten Survival Ratio
2010	444	415	0.937
2011	437	399	0.915
2012	432	425	0.988
2013	429	433	1.009
2014	412	433	1.051
2015	478	341	Pandemic → 0.713
2016	433	447	1.032
2017	422	452	Full-Day K → 1.071
2018	440	479	1.089
2019	461	451	0.978
2020	425	N/A	N/A
2021	464	N/A	N/A
2022	502	N/A	N/A
2023	462	N/A	N/A

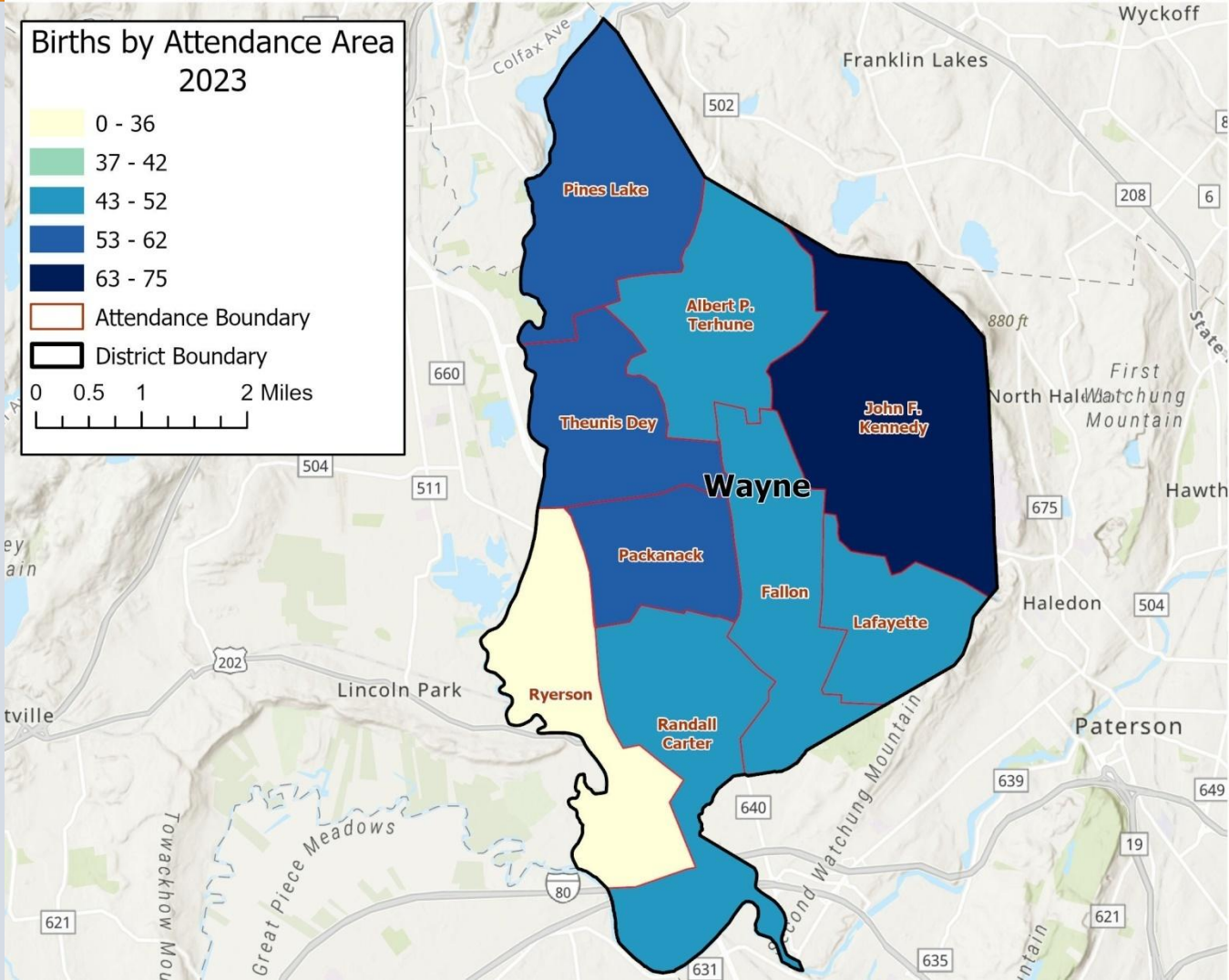
BIRTHS BY ATTENDANCE AREA

Birth Year	Carter E.S.	Fallon E.S.	J.F.K. E.S.	Lafayette E.S.	Packanack E.S.	Pines Lake E.S.	Ryerson E.S.	Terhune E.S.	Theunis Dey E.S.	Unknown
2010	39	47	63	39	35	36	56	51	42	36
2011	41	57	71	45	46	44	43	47	35	8
2012	49	50	75	35	44	40	41	41	43	14
2013	44	51	71	36	49	41	34	52	38	13
2014	46	48	91	34	40	53	26	31	38	5
2015	54	53	81	47	56	43	32	39	68	5
2016	43	46	92	36	53	35	32	40	55	1
2017	48	55	74	31	44	39	36	42	50	3
2018	46	58	78	41	44	43	39	43	46	2
2019	59	56	69	34	55	57	36	36	58	1
2020	39	58	82	42	44	44	37	38	41	0
2021	41	61	74	50	48	53	32	46	59	0
2022	58	62	84	52	59	55	28	47	52	5
2023	49	47	68	46	60	58	33	48	53	0
Total 2010-2023	656	749	1,073	568	677	641	505	601	678	
Difference 2010-2023	+10	0	+5	+7	+25	+22	-23	-3	+11	

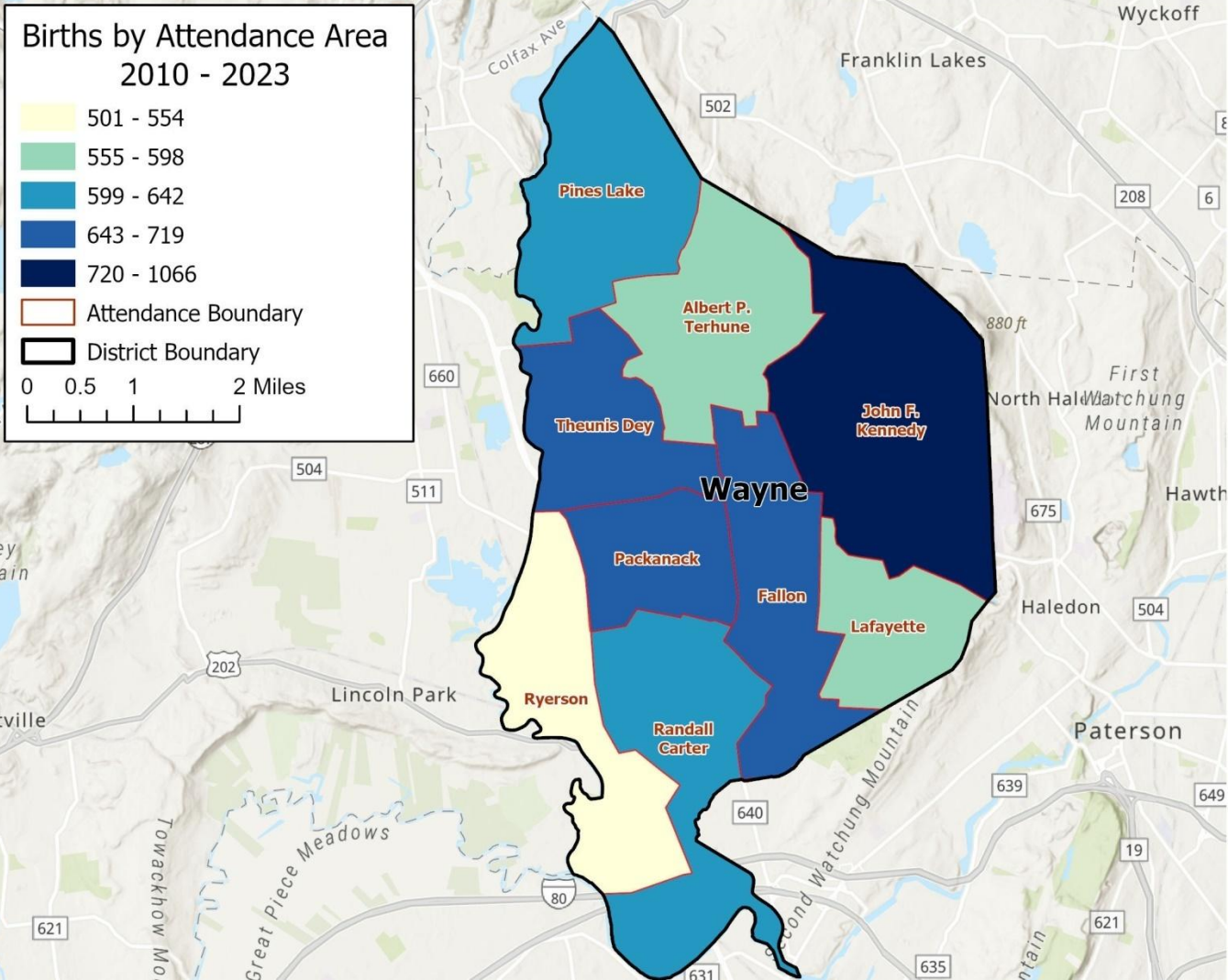
BIRTHS BY ATTENDANCE AREA 2010



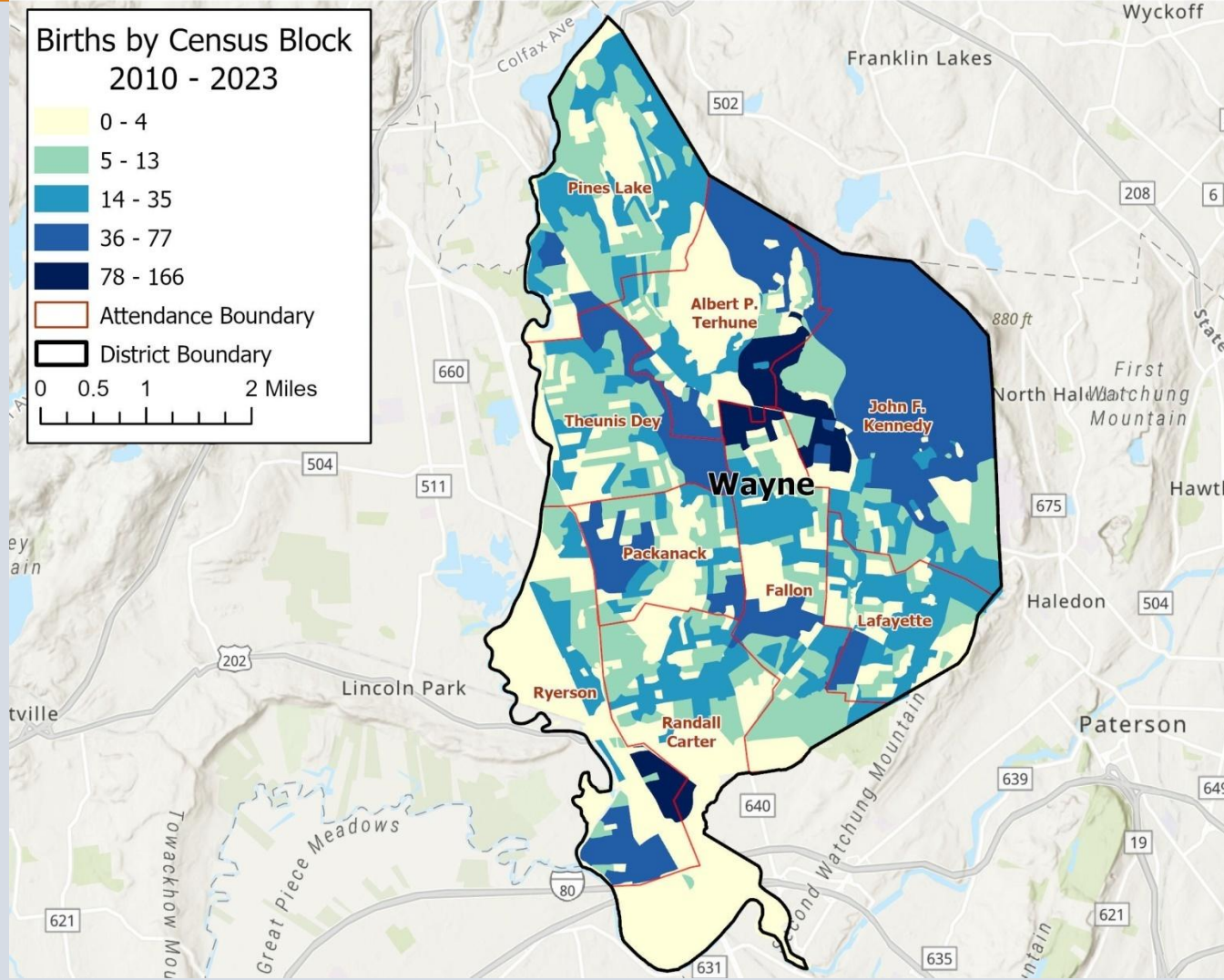
BIRTHS BY ATTENDANCE AREA 2023



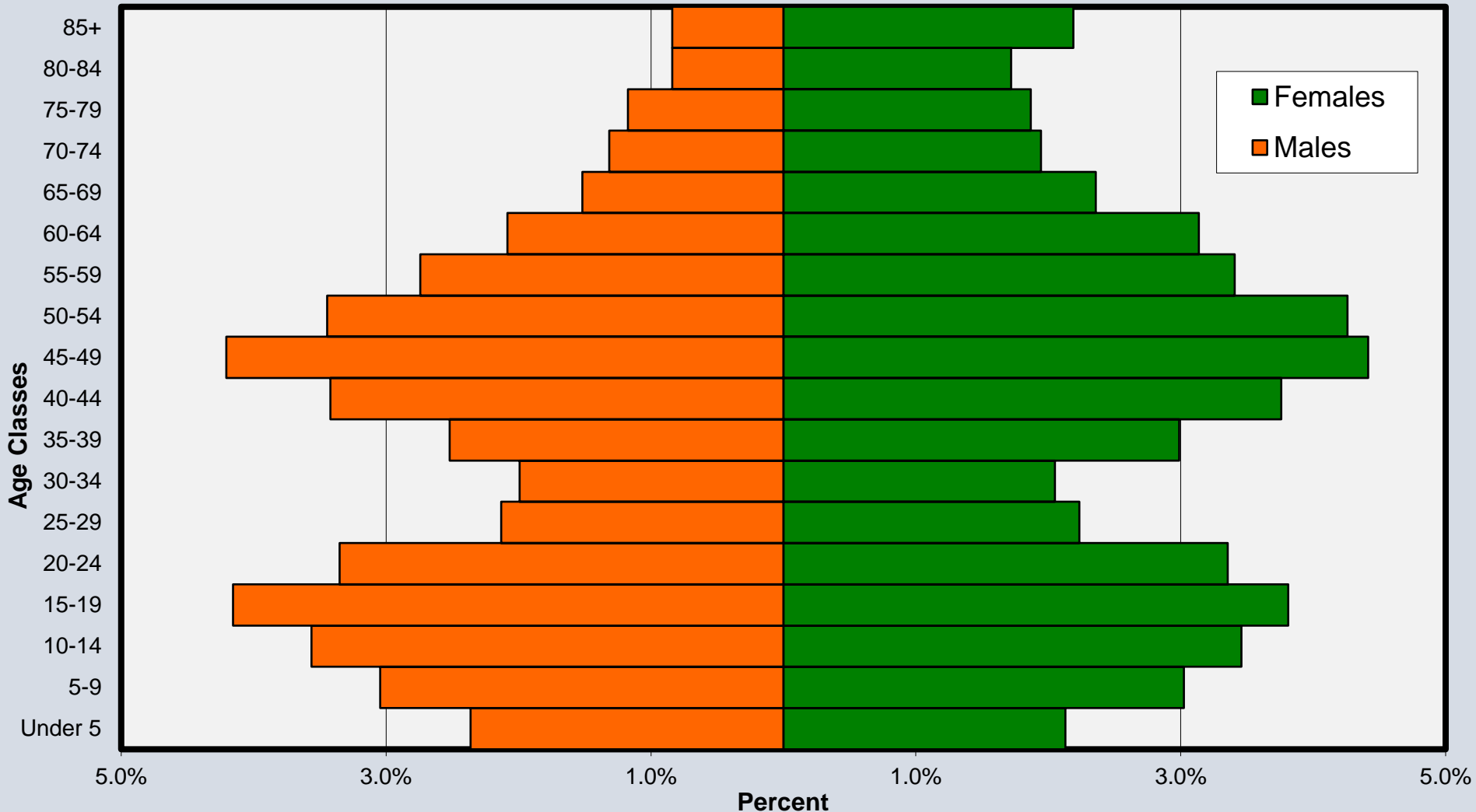
BIRTHS BY ATTENDANCE AREA 2010-2023



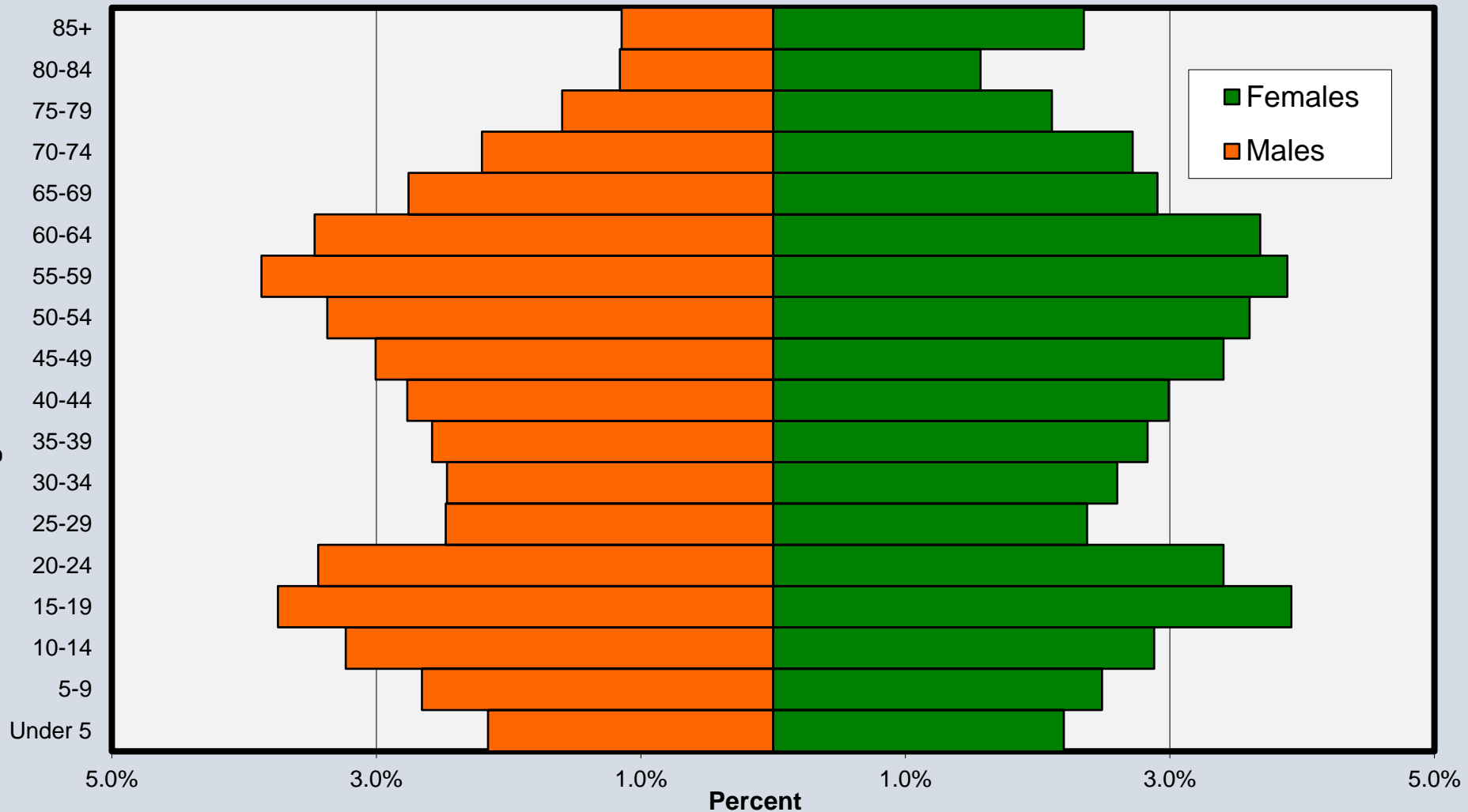
BIRTHS BY CENSUS BLOCK 2010-2023



POPULATION PYRAMID WAYNE TOWNSHIP 2010 CENSUS



POPULATION PYRAMID WAYNE TOWNSHIP 2020 CENSUS



POPULATION PYRAMID

WAYNE TOWNSHIP

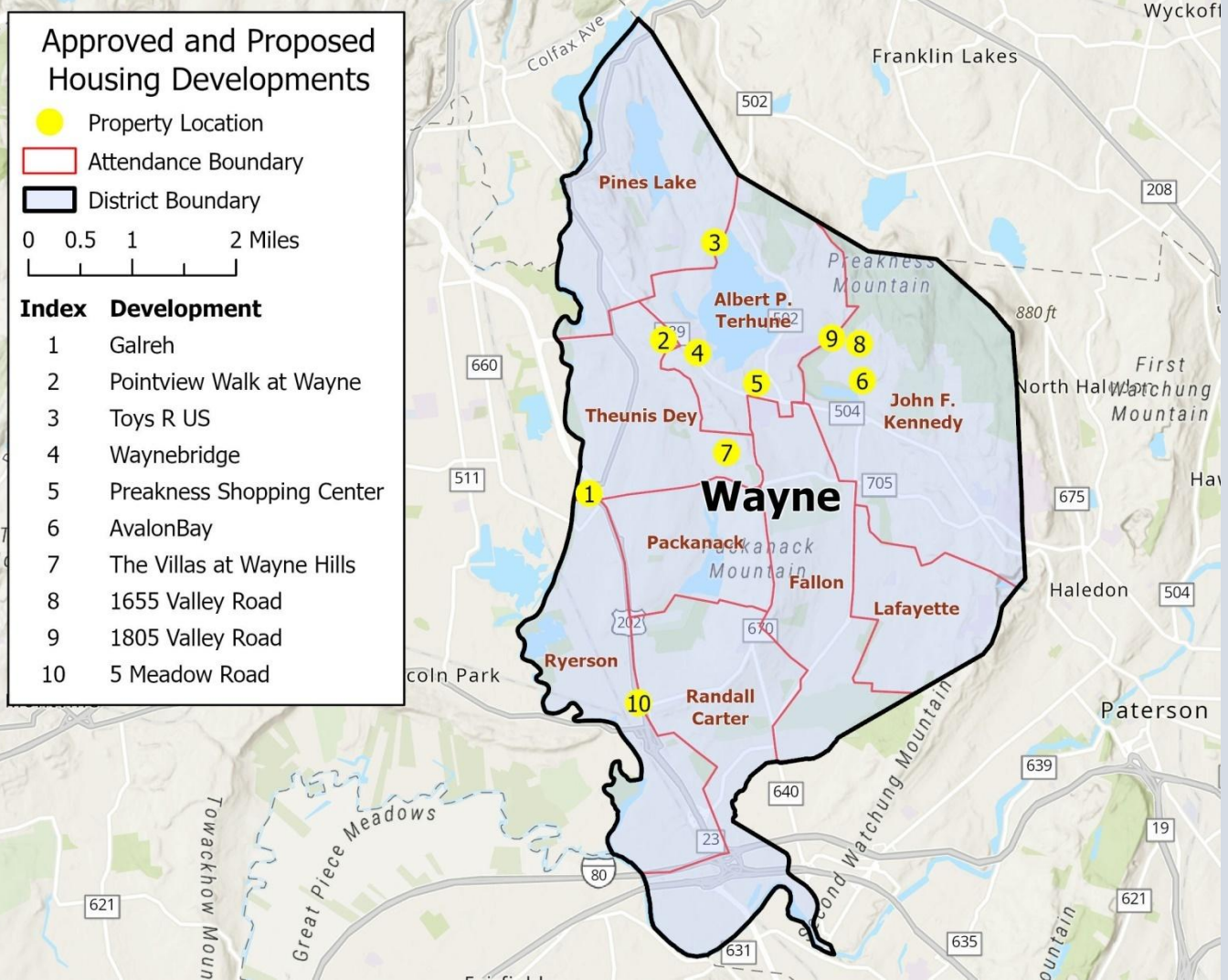
2010-2020 CHANGE

Age Group	Males		Females	
	Numerical Change	Percentage Point Change	Numerical Change	Percentage Point Change
Under 5	-111	-0.2	+40	+0.1
5-9	-210	-0.4	-290	-0.5
10-14	-178	-0.3	-312	-0.6
15-19	-221	-0.4	+64	+0.1
20-24	+52	+0.1	+31	0.0
25-29	+192	+0.3	+80	+0.1
30-34	+262	+0.5	+305	+0.6
35-39	+35	+0.1	-82	-0.2
40-44	-355	-0.7	-417	-0.8
45-49	-654	-1.2	-549	-1.0
50-54	-356	-0.1	-354	-0.7
55-59	+236	+1.1	+268	+0.5
60-64	+401	+1.4	+304	+0.5
65-69	+372	+1.2	+304	+0.5
70-74	+376	+0.9	+427	+0.8
75-79	+155	+0.4	+134	+0.2
80-84	-6	+0.3	-81	-0.2
85+	+169	+0.3	+90	+0.2

APPROVED AND PROPOSED NEW HOUSING IN WAYNE TOWNSHIP

- Potential for 3,067 non age-restricted new housing units, most of which will be multi-family (apartments or townhouses).
- Largest impact would be on Pines Lakes and Theunis Day, which would contain 44% and 26% of the units, respectively.
- At MS level, 74% of units will be in Schuyler-Colfax zone while nearly all units are in Wayne Hills attendance zone.
- Largest development is redevelopment of Toys R Us corporate headquarters (1,360 units). However, site plan has not been filed and unit type/bedroom distribution was not available.
- Baseline enrollment projections were modified to account for new housing developments (adjusted projections).
- 1,035 children estimated from new housing in grades K-12 (K-5 = 523, 6-8 = 227, and 9-12 = 285).

APPROVED AND PROPOSED NEW HOUSING IN WAYNE TOWNSHIP



ENROLLMENT PROJECTIONS

- Enrollments were projected from 2025-26 through 2029-30, a 5-year period.
- Two sets of projections- baseline and adjusted for housing growth (assuming all approved housing gets constructed).

Year	PK	K	1	2	3	4	5	6	7	8	9	10	11	12	SE ¹	Total
Baseline																
2025-26	194	444	476	512	510	593	537	572	582	569	513	552	574	578	278	7,484
2026-27	194	498	471	500	534	534	607	553	582	577	557	524	555	577	278	7,541
2027-28	194	532	527	496	519	559	546	625	563	578	560	569	527	558	283	7,636
2028-29	194	496	565	554	516	543	569	562	636	559	539	572	572	529	288	7,694
2029-30	194	495	523	595	580	540	552	586	571	631	526	551	575	574	295	7,788
Adjusted for Housing Growth																
2025-26	194	444	476	512	510	593	537	572	582	569	513	552	574	578	278	7,484
2026-27	194	513	485	514	548	548	621	566	595	590	569	537	567	589	278	7,714
2027-28	194	551	559	526	549	589	577	653	589	604	590	594	554	583	283	7,995
2028-29	194	515	593	596	555	582	608	601	671	592	587	609	605	563	288	8,159
2029-30	194	559	589	670	669	626	638	666	652	706	614	637	650	645	295	8,810

- Baseline – 7,788 in 2029-30 (+240)
- Adjusted for Housing Growth – 8,810 in 2029-30 (+1,262)

ENROLLMENT PROJECTIONS BY GRADE CONFIGURATION

Historical	PK-5		6-8		9-12	
2024-25	3,426		1,760		2,362	
Projected	PK-5 Baseline	PK-5 Adjusted	6-8 Baseline	6-8 Adjusted	9-12 Baseline	9-12 Adjusted
2025-26	3,429	3,429	1,770	1,770	2,285	2,285
2026-27	3,502	3,587	1,758	1,797	2,281	2,330
2027-28	3,539	3,711	1,814	1,894	2,283	2,390
2028-29	3,608	3,814	1,806	1,913	2,280	2,432
2029-30	3,652	4,118	1,841	2,077	2,295	2,615
5-year Change	+226	+692	+81	+317	-67	+253

SUMMARY

- Enrollments are projected to increase in the next five years due to the addition of nearly 3,100 new housing units and an inward migration of students, as 10 of the 13 grade progressions are showing an influx of children from one year to the next.
- Enrollment gain is not projected to be uniform across the grade configurations as the greatest impact is projected in the elementary school grades.

QUESTIONS

