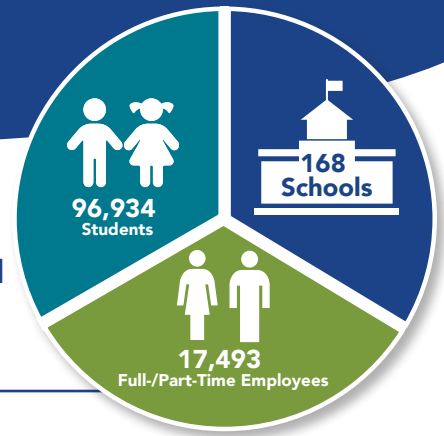




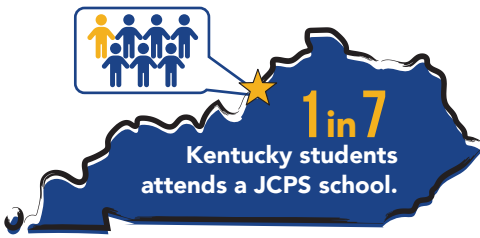
2023-24 School Year

Our Mission

To challenge and engage each learner to grow through effective teaching and meaningful experiences within caring, supportive environments



STUDENTS

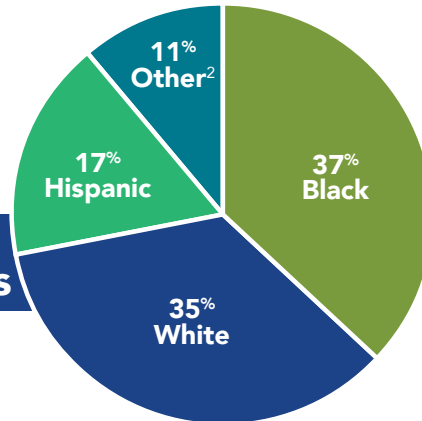


63% qualify for free or reduced-price meals.

12,500 Exceptional Child Education (ECE¹) students

3,319 homeless students

Racial Demographics



87% Four-year graduation rate



78.6% Postsecondary-readiness rate

- Graduation and postsecondary-readiness rates are at all-time highs.
- The graduation rate gap between Black and white students is now at 2.4%, half of what it was in 2017-18 (5%).
- Every demographic group of Jefferson County Public Schools (JCPS) students **IMPROVED** proficiency rates in reading and **IMPROVED OR MAINTAINED** proficiency rates in math.



TEACHERS



6,818 certified teachers



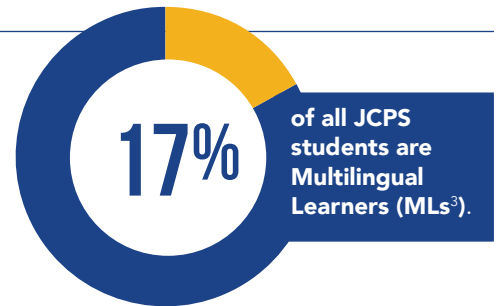
Legislative improvements to certification requirements in SB 49 (2023) and the state budget bill (HB 1 [2022]) resulted in more than **100 ADDITIONAL TEACHERS** in JCPS classrooms.

MULTILINGUAL STUDENTS

147 COUNTRIES listed as birthplaces for JCPS students

139 LANGUAGES spoken by JCPS students

JCPS's multilingual student population alone, which was **18,114** in December 2023, would equate to Kentucky's fourth-largest school district.



¹ECE Programs are designed to meet the needs of students who have educational disabilities and have an Individualized Education Program (IEP). IEPs are developed for each eligible student and may include academic, social, and/or behavioral goals along with the specially designed instruction, accommodations, and related services necessary to help students succeed.

²Other races include American Indian/Alaskan Native, Asian, Hawaiian/Other Pacific Islander, and Multiple Races.

³MLs are students whose primary language is something other than English and who are identified by the English Language Proficiency Screener. (See the Every Student Succeeds Act [ESSA] 8101[20] for full definition.)

A School for Everyone and Every Need

JCPS offers a wide range of schooling options to all 96,000 students.

The district's rising postsecondary-readiness rate correlates, in part, with most JCPS high schools adopting the Academies of Louisville model. This gives students who choose to attend their assigned school access to career pathways like those offered at our magnet schools.

Community partnerships formed with local businesses in Jefferson County also give our students access to apprenticeship, internship, and co-op opportunities, creating a potential school-to-work pipeline.

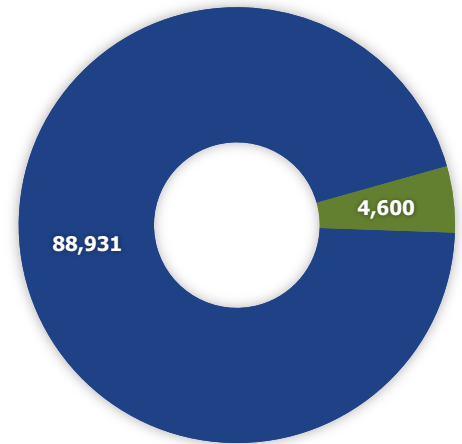


Students Enrolled in Specialized JCPS Schools

Compared to total students enrolled

- A1 Students
- Non-A1 Students

As of October 1, 2023, there were 88,931 students enrolled at A1 schools and 4,600 students enrolled at non-A1 schools in grades K-12.¹



The district provides **SPECIALIZED SCHOOLS** that cater to the specific educational needs of every student, including those with varying behavioral, physical, emotional, and developmental needs.

These specialized schools, whose enrollment levels are identified as non-A1 students in the chart above, offer unique learning environments that allow us to provide robust student choice and target the specific needs of each individual learner.

District-operated alternative education programs have no defined attendance boundaries and are designed to remediate academic performance, improve behavior, or provide an enhanced learning experience.

JCPS State Agency Children's Programs, in partnership with Kentucky Educational Collaborative for State Agency Children, serve students' educational needs in hospital settings, residential treatment programs, mental health treatment programs, and within the Department of Juvenile Justice Detention Center.

Specialized School Choices

- **Liberty High** provides a diploma path to students who are academically 1.5+ years behind.
- **Georgia Chaffee Teenage Parent Program (TAPP)** provides programming to pregnant or parenting students.
- **Newcomer Academy** offers a specialized choice for students in their first year of instruction in the United States.
- **Phoenix School of Discovery** and **Pathfinder School of Innovation** provide blended and online specialized environments, respectively.
- **Minor Daniels Academy** and **Breckinridge Metropolitan High** support behavioral and academic growth for students through continued placement in a structured environment.



Hospitals

- Ackerly
- The Brook-Dupont
- The Brook-KMI
- Peace Academy



Residential Programs

- Bellewood
- Brooklawn
- Boys and Girls Haven
- Home of the Innocents
- Maryhurst Academy
- St. Joseph Children's Home



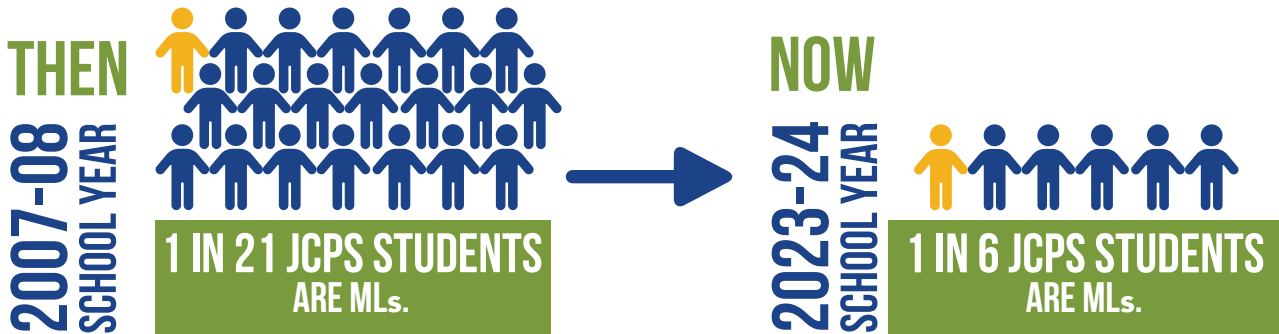
Special Schools Serving on the Continuum of Special Education Services and Programs

- Mary Ryan
- Waller-Williams Environmental
- Binet
- Churchill Park
- Heuser Hearing
- UofL PACT
- Ahrens

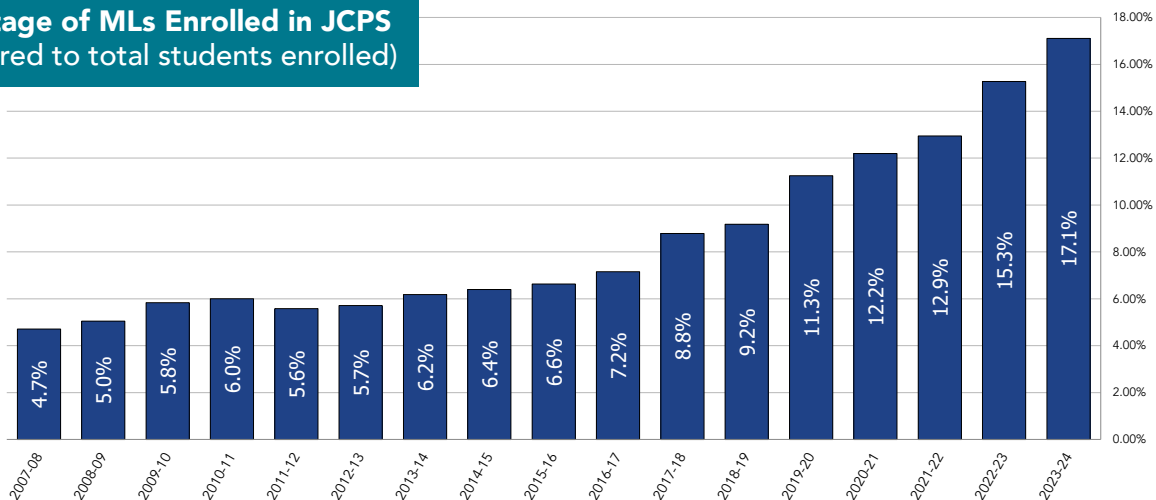
¹ A1 schools are under administrative control of a principal or head teacher and eligible to establish a School-Based Decision Making (SBDM) Council. Non-A1 schools offer specialized and alternative school options to ensure JCPS serves every student.

Multilingual Learners

Federal law requires JCPS to provide services to all eligible students. This includes JCPS ECE¹, private, and homeschooled² students. There are also mandates requiring JCPS to provide services to our multilingual learners (MLs)³, which is exponentially growing.



Percentage of MLs Enrolled in JCPS
(Compared to total students enrolled)



In ten years, JCPS's number of MLs grew by **155 PERCENT**.

¹ECE Programs are designed to meet the needs of students who have educational disabilities and have an IEP. IEPs are developed for each eligible student and may include academic, social, and/or behavioral goals along with the specially designed instruction, accommodations, and related services necessary to help students succeed.

²Private and homeschooled students may qualify for federally funded educational services, such as special education evaluations and English Language Development services.

³MLs are students whose primary language is something other than English and who are identified by the English Language Proficiency Screener. (See ESSA 8101[20] for full definition.)

Future State

School Choice



- The new School Choice Plan implemented in the 2023-24 school year allowed all students to attend a school close to home.

Investing in Highest-Need Schools



- The newly established Choice Zone, located mainly in West Louisville, floods the high-need area with resources and offers higher pay for Choice Zone teachers.

Districtwide Core Curriculum



- All K–8 students received the same rigorous math/literacy curriculum for the first time in the 2023-24 school year.
 - Students and teachers can move schools and will be guaranteed a consistent curriculum.

District Infrastructure and Facilities



- Two new school buildings opened for the 2023-24 school year.
 - Echo Trail Middle School, located in East Louisville, will accommodate the population boom happening there.
 - Perry Elementary School, located in West Louisville, is the first new school built in that part of Jefferson County in more than 20 years.
- JCPS has the goal of beginning construction on 20 new schools and renovations on 20 existing schools by 2032.
- Completed a multimillion-dollar network upgrade to ensure connectivity and bandwidth for digital learning using federal, state, and district funds
- Internet redundancy systems are being installed at schools for emergency communication.

Mental Health Services



- Mental health practitioners and counselors are in every school.
 - Increased the use of the mental health practitioner role by adding additional staff to case-manage and provide services for students exhibiting significant behaviors and to assist students transitioning to and from Behavior Support Schools
- Agreements with community mental health partners offering additional counseling support to students in and out of school

Academic Supports



- 10,000 students in summer learning programs targeting students who need extra academic and enrichment opportunities
- Elev8 Center: After-school tutoring for high-need students

School Safety



- All JCPS middle and high schools will have weapons detection systems installed. Installation began in late 2023.
- Creation of the JCPS Police Department
- Safety Administrators (SAs) at every school
- Cybersecurity enhancements provide advanced notifications on compromised accounts and add extra protection for student accounts without multifactor authentication standards.
- Increased board-certified Behavior Analyst position to create and monitor interventions for students struggling with behavior
- Expanded our Olweus Bullying Prevention Program (OBPP) throughout the district and partnered with the Louisville Metro Police Department (LMPD) to provide students with Gang Resistance Education And Training (GREAT) programming
- Updated the bus referral process to provide more timely responses to student bus behavior and to support bus drivers who have student behavior issues
- Added extended bus suspension option for bus referrals to address safety concerns
- Increased staff capacity to support additional Social Emotional Learning and Trauma Informed Care Training
- Expanded community partnership with Volunteers of America Mid-States Restorative Justice (VOA-RJ) to provide wraparound case management for families of students exhibiting increased negative behaviors for elementary and middle school students
- Implemented online software and a database to streamline our threat assessment process and bolster school safety teams' abilities to monitor safety-related behavior issues

College and Career Readiness



- 187 total Career and Technical Education (CTE) pathways offered at high schools districtwide, 76 of which are unique
- Graduation and postsecondary-readiness rates are at all-time highs.

Community Partnerships



- Evolve 502: Free two-year tuition for all JCPS graduates
- Academies of Louisville: 200+ partnerships, including UPS, Norton Healthcare, GE Appliances, Lantech, Humana, Churchill Downs, and Trilogy

Student-Focused Technology



- JCPS Everyone:1 (Everyone-to-One): Every JCPS student is guaranteed an instructional device with Anytime Anywhere Access.
- JCPS offers Long-Term Evolution (LTE)-connected devices to students in need with the help of federal and district funds.
- All classrooms have interactive panels to support student participation in interactive learning.



Legislative Priorities

Funding



The Jefferson County Public School (JCPS) District supports legislation to adequately fund the public education system as required by the Kentucky Constitution and as further explained in *Rose v. Council for Better Education* (1989):

- Establish in statute a consistent rate increase for Support Education Excellence in Kentucky (SEEK) over time, indexed to inflation, to allow districts to better plan for capital costs, teacher salary increases, staffing patterns, and program investment
- Fully fund SEEK Transportation
- Fully fund the School Safety and Resiliency Act, including both school security and mental health resources
- Permanently codify full-day kindergarten funding
- Invest in universal pre-kindergarten, including physical and human infrastructure
- Provide increased flexibility for local districts to generate revenue
- Transition to an Average Daily Membership (ADM) model that is more reflective of district costs than the current Average Daily Attendance (ADA) model
- Reconsider the weights for SEEK add-ons, including at-risk students, exceptional children, and limited English proficiency, in light of cost changes since those weights were first enacted

JCPS opposes legislation that would create any unfunded mandate for local school districts.

Treatment of Local School Districts



JCPS opposes legislation that imposes obligations or restrictions on a certain school district or districts based on district size or other immaterial criteria that are not imposed on all Kentucky school districts, including the following:

- Any proposals to dilute the authority of the Jefferson County Board of Education relative to other local school boards
- Any proposals aimed at dividing JCPS into multiple districts and making Jefferson County the only community in the state without a unified county school district

School Choice



JCPS opposes any legislation that would limit, hinder, or eliminate the district's current ability to offer robust school choice options to its students and families.

JCPS opposes any use of state tax revenue or exclusion of anticipated revenue that would divert funding away from traditional public schools, including schemes like vouchers, tuition credits, tax credits, and funding for charter schools.

Accountability



JCPS supports legislation to review the state's accountability metrics and create a system that authentically values career readiness, properly weights important factors that are valid and reliable predictors of success, and does not unfairly punish schools with high populations of students experiencing poverty, multilingual learners, and minorities.

Equity



JCPS supports legislation to ensure that the membership of a district's Superintendent Screening Committee generally reflects the racial and ethnic composition of the student population that the district serves and includes at least one student representative on the committee.

JCPS supports legislation that would work toward expanding curricula and instructional materials in order to increase relevance to all students, with an emphasis on expanding beyond traditional Eurocentric perspectives.

JCPS also supports legislation that would provide for high-quality implicit bias training and multicultural professional development for staff. Further, JCPS opposes efforts to reduce or eliminate current offerings to students and staff in these areas.

JCPS opposes any efforts to discriminate against LGBTQ students, including efforts to prevent equitable access to necessary curriculum, supports, and resources or remove protections for their mental health and safety.

Student Health and Safety



JCPS supports legislation that would discourage students from using tobacco products, alternative nicotine products, or vapor products.

JCPS supports legislation that would increase access to mental health supports for students, including additional funds set aside for licensed mental health service providers for schools that allow districts to take advantage of federal Medicaid dollars through the Free Care waiver.

JCPS supports efforts to encourage secure storage of firearms and ammunition in order to limit irresponsible access by minors and reduce the presence of weapons on school campuses.

School Operations



JCPS supports permanently codifying the streamlined facilities process in House Bill 678 (2022) and reducing the administrative burdens on local districts in the construction process.

JCPS supports similar legislation to HB 678 (2022) that would streamline the property acquisition and disposition process and reduce administrative burdens and wait times for approval.

JCPS supports legislation to expand school districts' transportation options, which are highly limited to the traditional school buses operated by district-employed CDL-licensed bus drivers.

Teacher Recruitment and Retention



JCPS supports legislation that allows teachers who retire to return to employment in a full- or part-time teaching or substitute teaching position with one month of separation and without salary penalty by increasing the critical shortage position allowance from 1 percent to 10 percent.

JCPS supports legislation allowing authorized classified staff to provide classroom instruction without direct supervision.

JCPS supports an annual state-mandated and state-funded pay raise for teachers to cover cost-of-living increases.

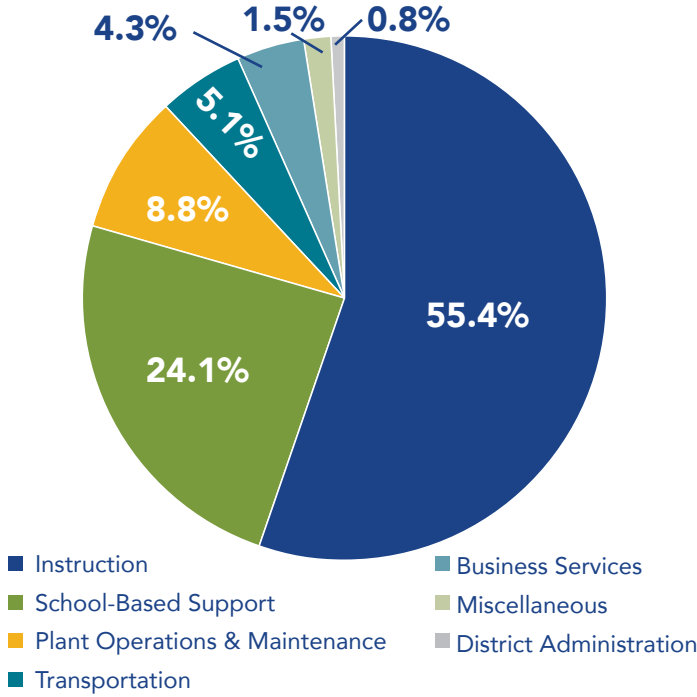
Reducing Board Member Burden



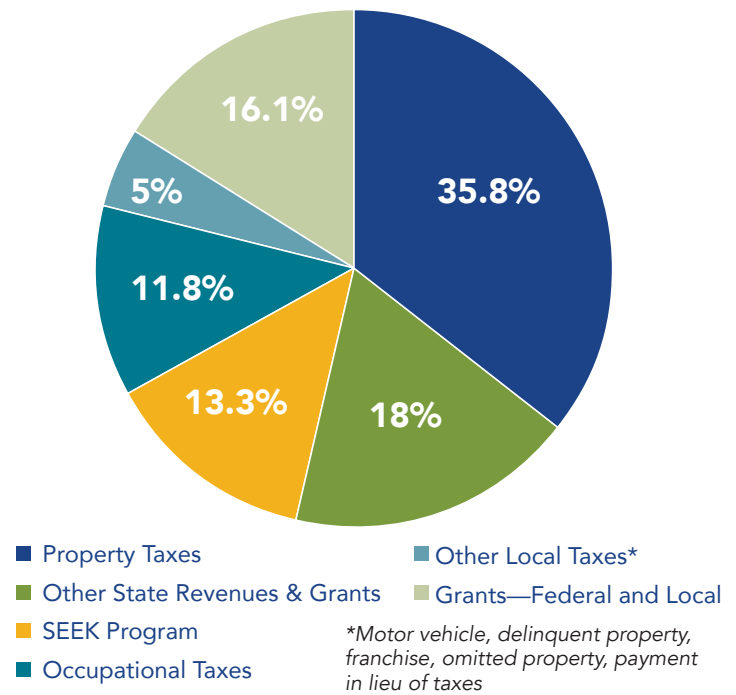
JCPS supports legislation to amend KRS 161.765 to allow appeals for demotions to be heard by a committee appointed by the superintendent instead of the board of education to align with KRS 160.370 and 160.380, giving the superintendent oversight and management authority for all matters relating to personnel.



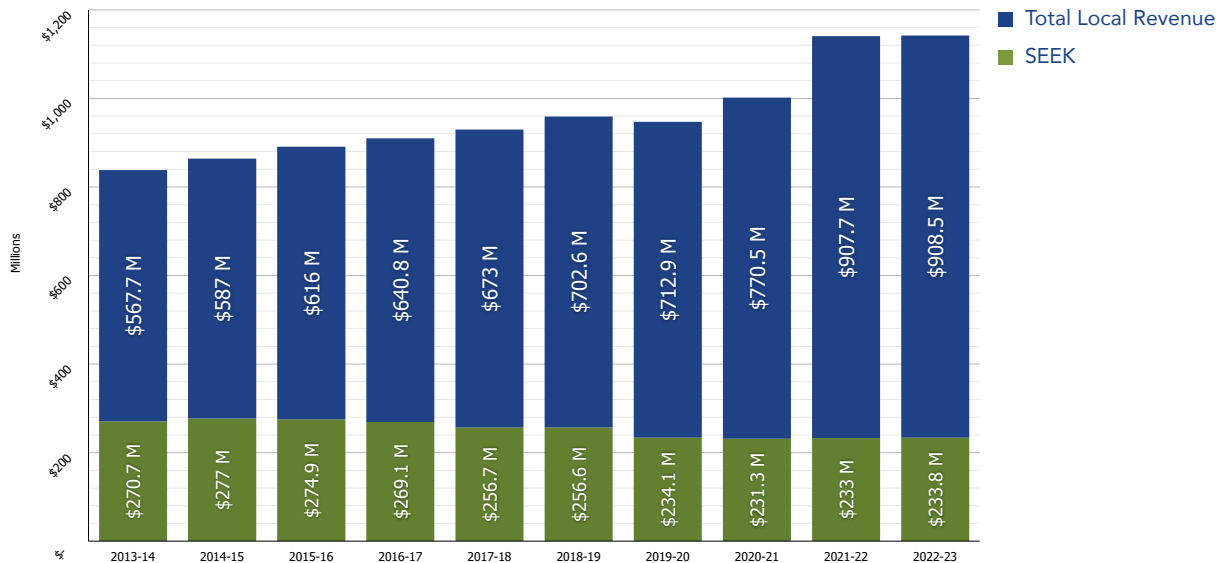
Expense Categories



Revenue Sources



SEEK Funding vs. Total Local Revenue—2013–22 (In Millions)



As shown in the graph above, the state's SEEK contribution has decreased by **14 percent** over the last ten years while the local revenue contribution has increased by **60 percent**.