

# TONOPA VALLEY HIGH SCHOOL, RUTH FISHER MIDDLE SCHOOL & DISTRICT OFFICE Additions and Renovations

## DISTRICT OFFICE & RUTH FISHER - Renovations

The existing reception will be updated with new safety glazing and controlled access to the administration area.

## TONOPA VALLEY HIGH SCHOOL - Additions and Renovations

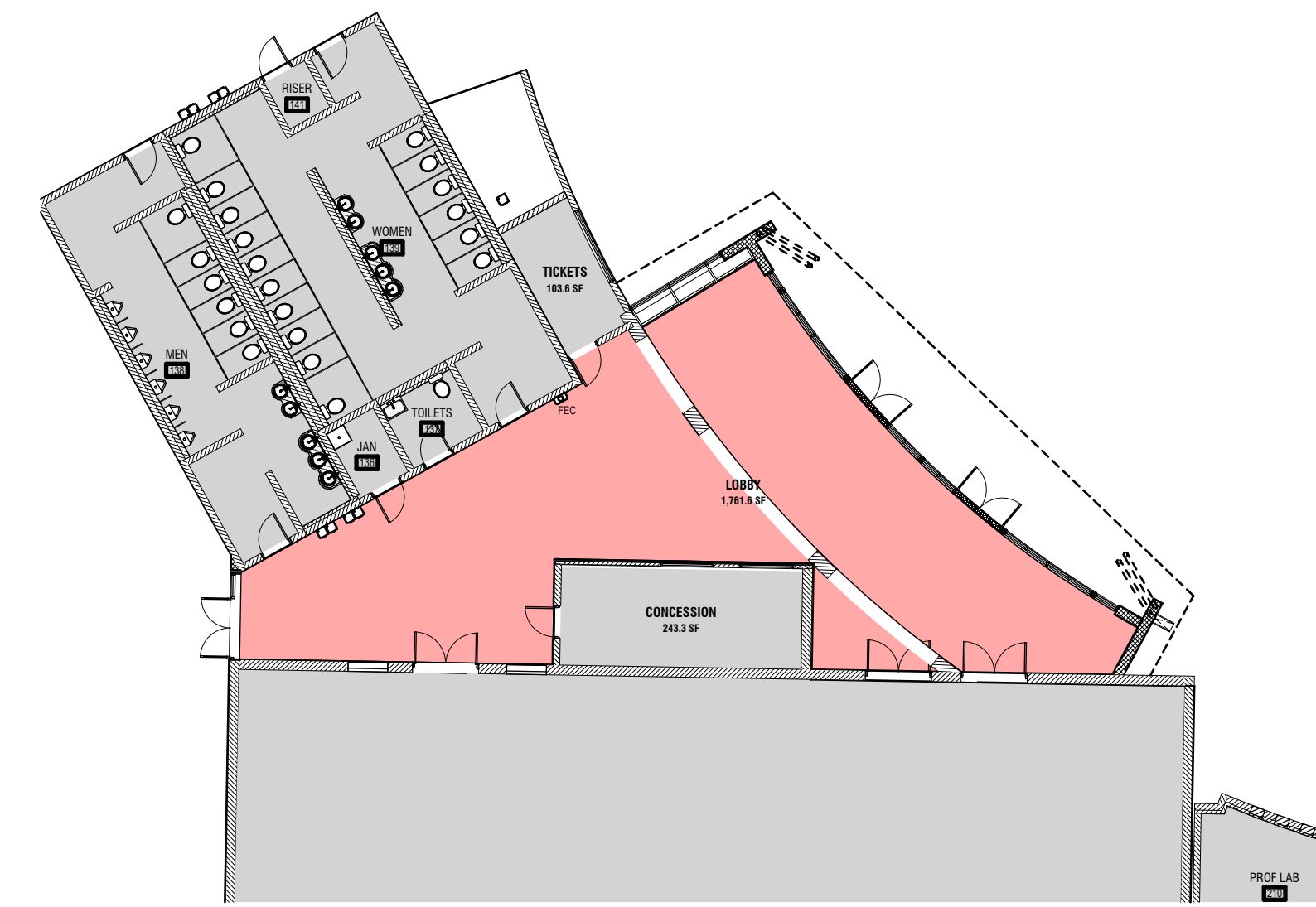
The existing reception area will undergo a complete renovation with a controlled access to the campus, safety glazing, and new reception desks.

A gym lobby addition of 1,845 sqft with an aluminum storefront will take part of this scope as an add alternate. The lobby will serve as a gathering space before sporting events and will provide an enclosed and secure space between the restrooms, the gymnasium, and the concession stand. To celebrate the achievements of the students, there will be a new trophy case near the entrance.

The existing cafeteria will have an expansion of 2,384 sqft on the west part of the building. The cafeteria will have a total square footage of 5,630 allowing students to have more space inside and sit under the covered exterior eating area.

On the south west part of the campus a new 2-story, 15,450 sqft classroom addition will be part of this phase. It will include a total of 10 classrooms, teacher's lounge and storage areas. The new classroom building will connect to existing classroom building 400 through an exterior covered walkway.

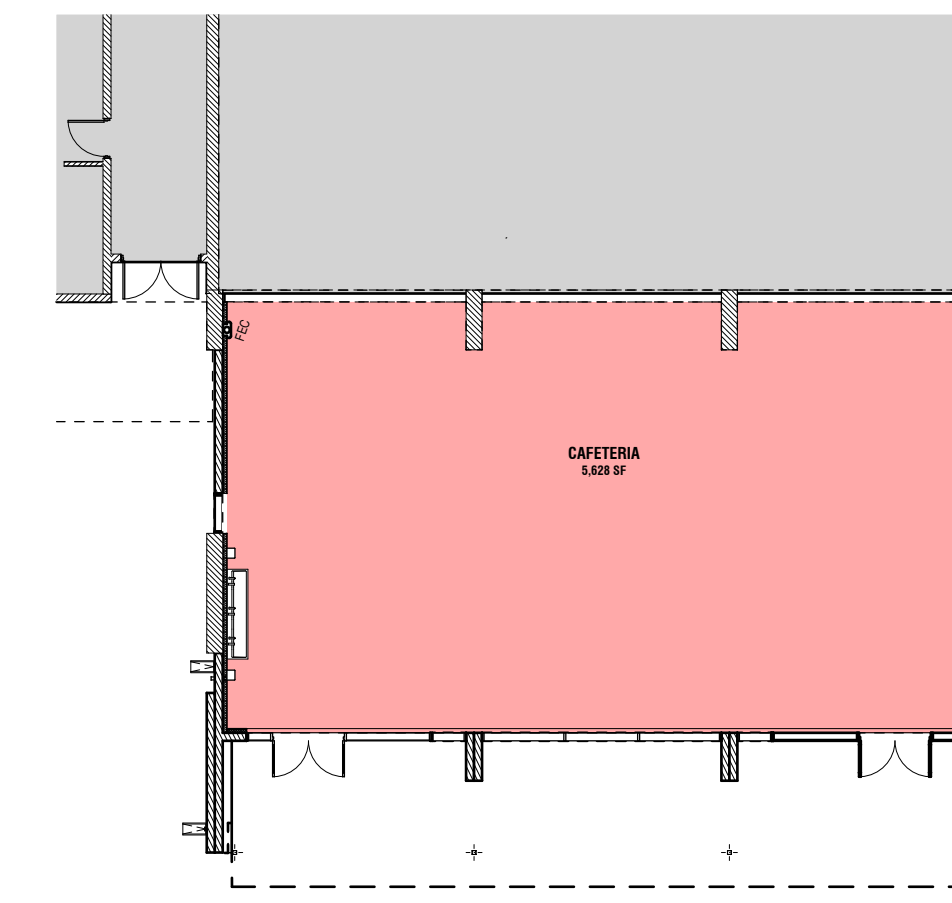
The addition of these new classrooms and cafeteria expansion will relieve the pressure from the existing facility and include room for growth.



TVHS - GYM LOBBY ADDITION



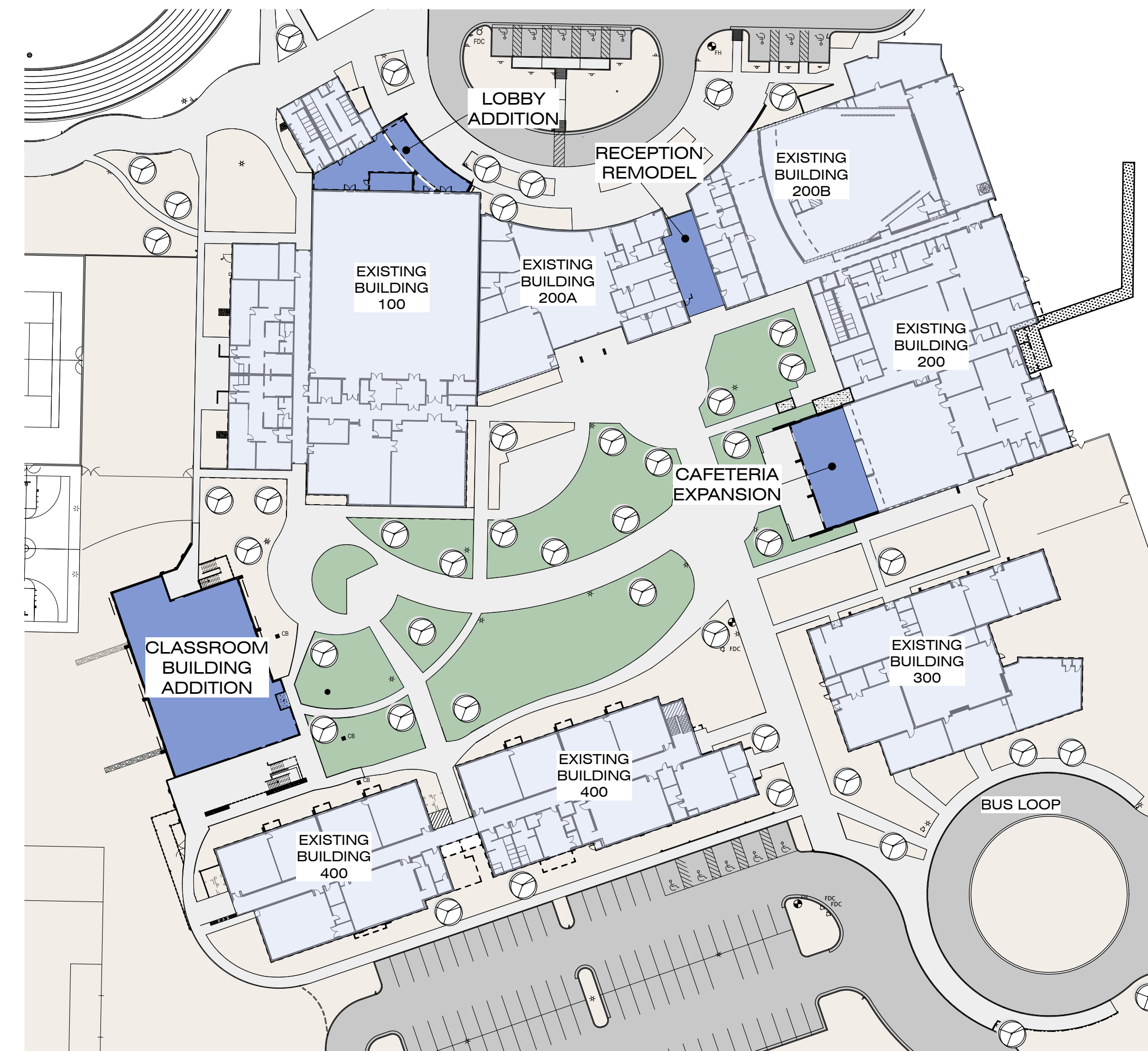
Gym Lobby Addition



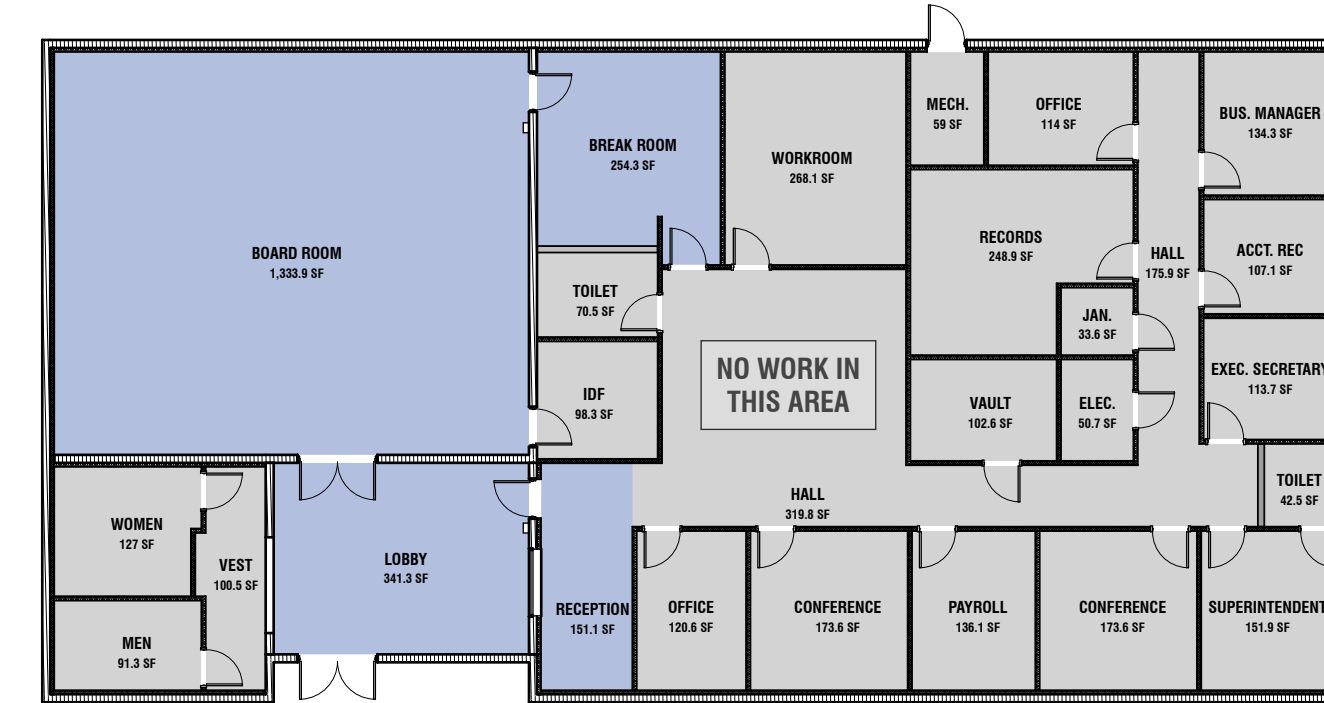
TVHS - CAFETERIA EXPANSION



Cafeteria Expansion



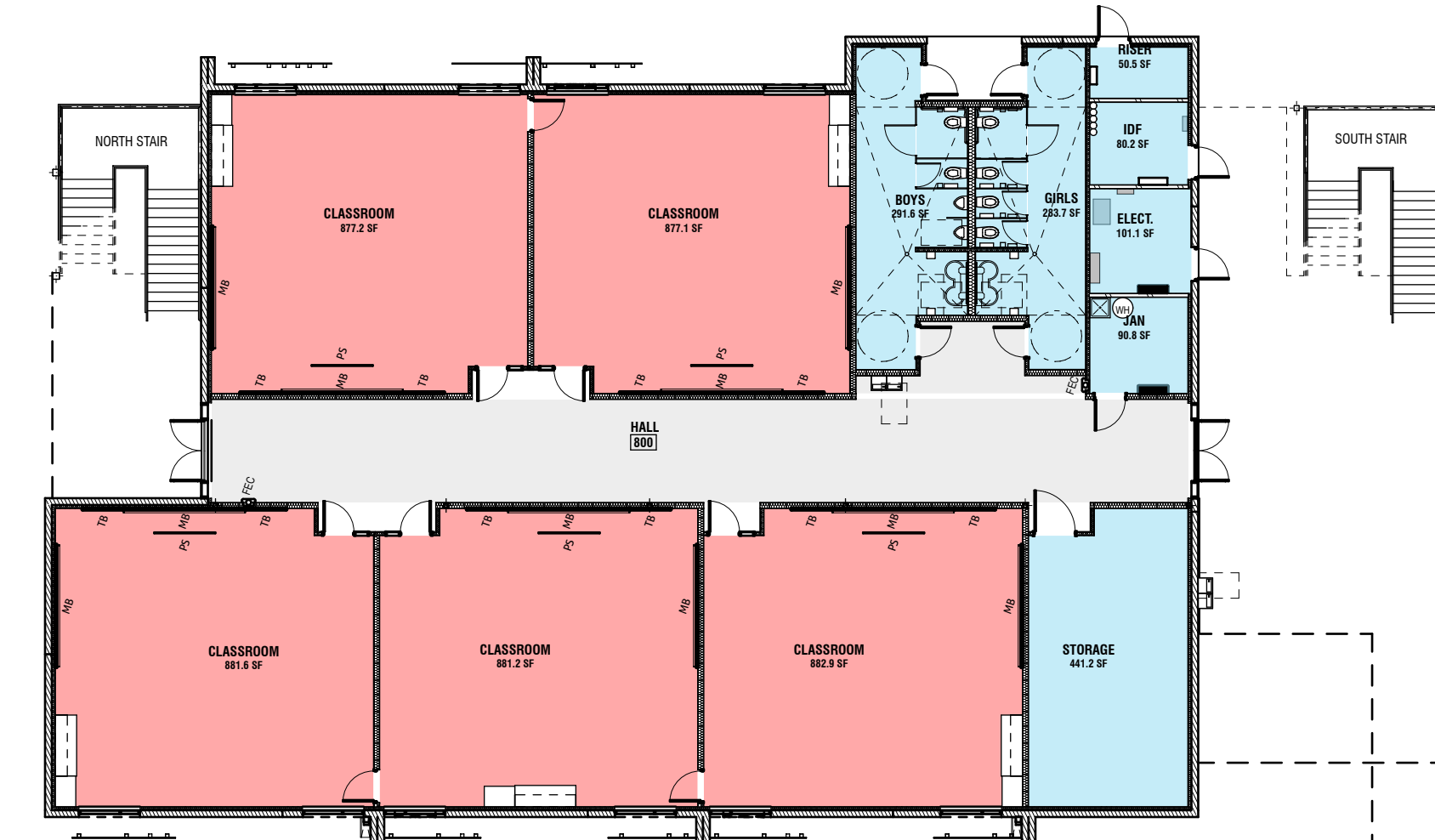
SITE PLAN



DISTRICT OFFICE - ADMINISTRATION



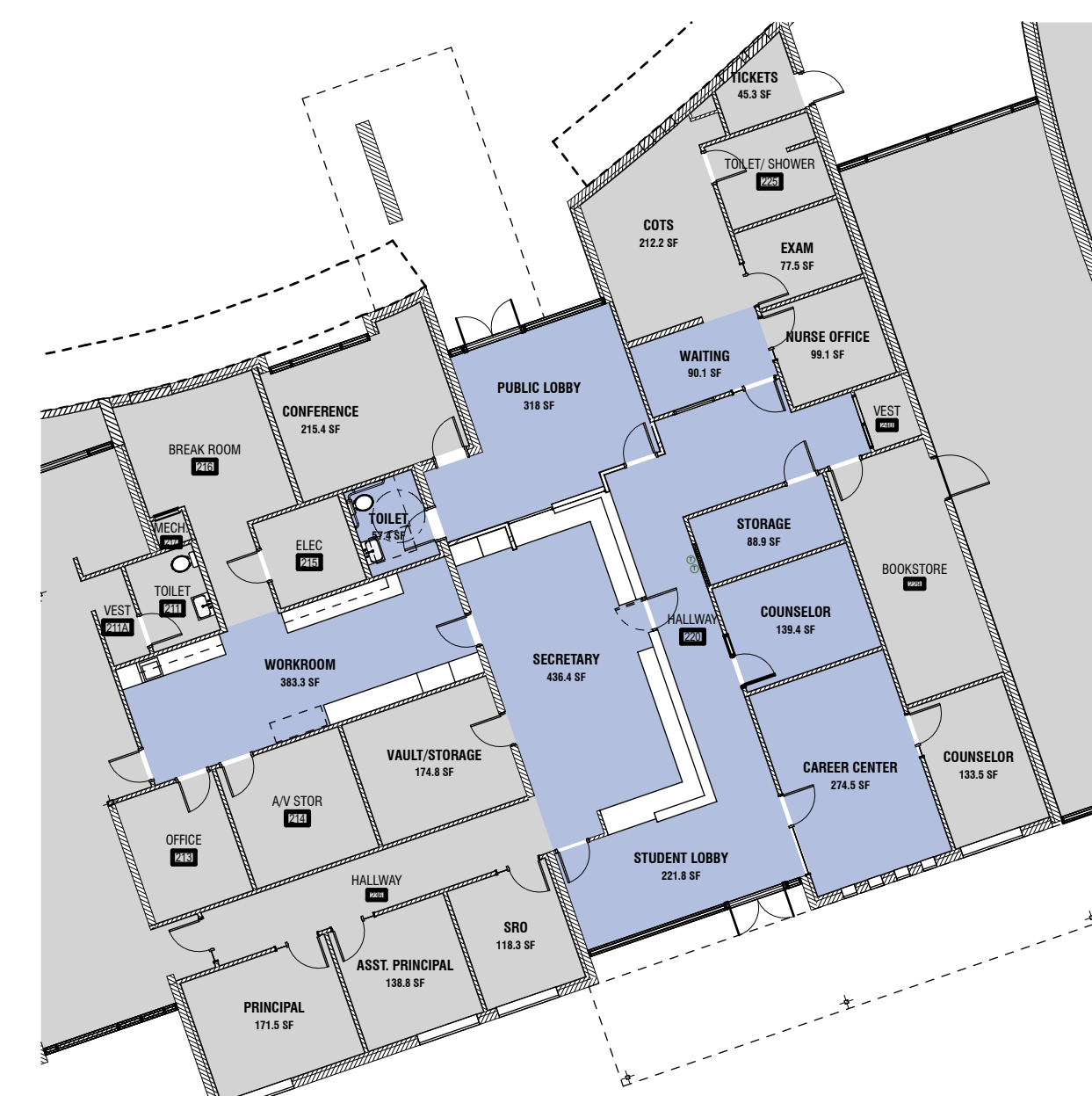
RUTH FISHER - ADMINISTRATION



TVHS - CLASSROOM BUILDING ADDITION FIRST FLOOR



Classroom Building Addition - North View



TVHS - RECEPTION REMODEL



TVHS - CLASSROOM BUILDING ADDITION SECOND FLOOR



Classroom Building Addition - South View

