

# Brevard County Public Schools

Facilities Planning Interviews - Initial Synthesis

## Study Goal

The consultant team will interview each Brevard Public Schools (BPS) board member to discuss and summarize short- and medium-term BPS facility priorities.

# Board Member Engagement Overview

The BPS Board Member discussions on **short and medium term priorities** for BPS were summarized according to four themes:

- **Programming**
- **Aging Facilities**
- **Utilization and Enrollment**
- **Financing Approaches**

The following pages summarize Board member sentiment across these key themes.

<b>Programming</b>				
<b>Topic</b>	<b>Not a priority / Opposed</b>	<b>Neutral / Weak Priority</b>	<b>Strong Priority / Agreement</b>	<b>N/A</b>
<b>CTE</b>				
CTE offerings are a strength of BPS			5	
Site new CTE programs in re-purposed buildings			4	1
CTE programs should be spread throughout the district, rather than in a centralized location		1	3	1
<b>ESE</b>				
ESE programs are lacking and more investment is needed			5	
Address conditions at Gardendale and consider easing pressure by developing new campuses			5	
<b>ALTERNATIVE LEARNING CENTERS</b>				
Alternative Learning Center offerings should be expanded to allow for more age-specific programming			2	3
<b>STEM</b>				
Site STEM programs in every school	1	1	1	2
<b>Choice</b>				
Consider a new choice school in south county			2	3

<b>Programming (continued)</b>				
<b>Topic</b>	<b>Not a priority / Opposed</b>	<b>Neutral / Weak Priority</b>	<b>Strong Priority / Agreement</b>	<b>N/A</b>
<b>Athletics</b>				
Expanded availability and quality of athletics programs can make BPS schools more competitive			1	4
<b>Year Round Schools</b>				
Year round schools should be considered			1	4
<b>Programmatic Feeder Patterns</b>				
There is a lack of clear/effective programmatic feeder pathways from ES to HS			3	2

<b>Aging Facilities</b>				
<b>Topic</b>	<b>Not a priority / Opposed</b>	<b>Neutral / Weak Priority</b>	<b>Strong Priority / Agreement</b>	<b>N/A</b>
<b>Co-locations and Re-purposing</b>				
The district should prioritize ESE and/or ALC programs for co-locations		1	4	
Underutilized facilities could offer opportunity to expand CTE, Pre-K, and/or other program offerings			4	1
<b>Closures and Consolidation</b>				
Consider consolidation and co-location prior to closure as part of a unified, community-driven strategy to right-size schools across district			5	

<b>Utilization and Enrollment</b>				
<b>Topic</b>	<b>Not a priority / Opposed</b>	<b>Neutral / Weak Priority</b>	<b>Strong Priority / Agreement</b>	<b>N/A</b>
<b>New Schools</b>				
Construct new school in south county / Palm Bay, potentially a K-8 school			3	2
<b>Grade configurations</b>				
Additional grade K-8 schools are worth consideration	1	2	2	
Additional grade 7-12 schools are worth consideration	2		3	
<b>Co-location / Re-purposing</b>				
Consider co-location, re-purposing, and/or consolidation as part of a unified, community-driven strategy to right-size offerings across district			5	
<b>Perception of BPS schools</b>				
Improved marketing of existing school offerings could help drive enrollment in existing schools			4	1

<b>Financing Approaches</b>				
<b>Topic</b>	<b>Not a priority / Opposed</b>	<b>Neutral / Weak Priority</b>	<b>Strong Priority / Agreement</b>	<b>N/A</b>
<b>Debt</b>				
The district should not assume additional debt		1	3	1
<b>Sales Tax</b>				
The sales tax has been an effective means of financing BPS capital costs			5	
Consider term of sales tax beyond six years		2	1	2
Sales tax should be expanded to fund new schools			3	2

# Next Steps



# Recommended Focus Areas

- Gardendale and ESE facility planning
- Strengthen cross-functional approach to facility planning
- Move forward with planning/design for San Filippo site in Palm Bay
- Strategic promotion of BPS services and programs

*Foundational work for discussion of future capital program planning and sales surtax renewal in 2026*

11

# Gardendale and ESE Facility Planning

- Analysis of programmatic needs vs. location/space/land/funding available
- Engage consulting services to develop options/opportunities
- Develop scope of work with Student Services, C & I and COS
- Develop short and long range facility plans to support ESE services
- Complex challenge, multiple solutions, iterative process

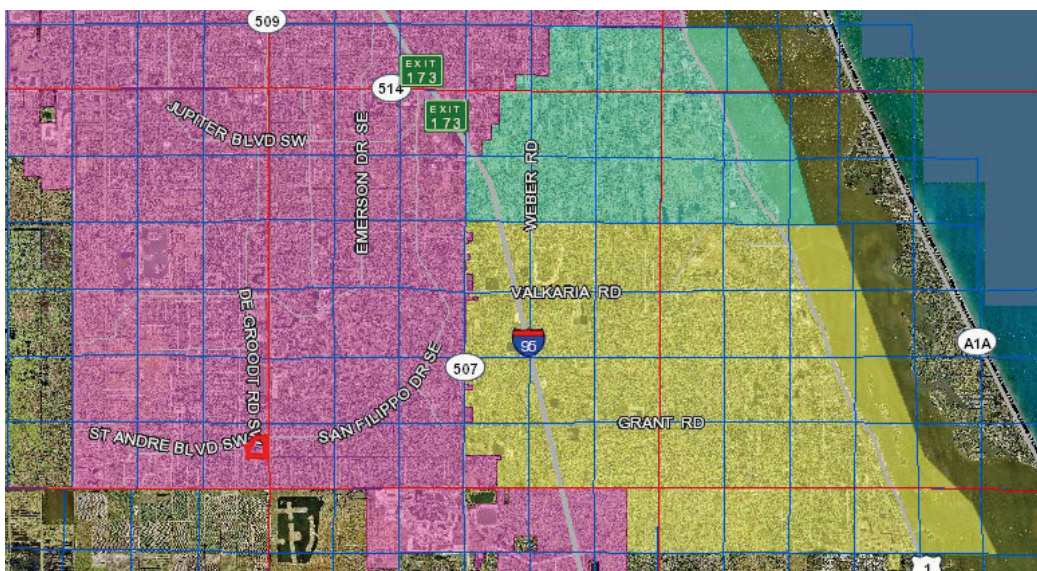
12

# Cross-Functional Facility Planning

- Update facility condition assessment (FY 25 budget)
- Track other facility condition data points – such as work order data
- Continue monitoring educational marketplace and enrollment trends
- Identify facilities with capacity for additional programs
- Identify short and long term program opportunities for space utilization
- Consultant facilitation
- Complex challenge, multiple solutions, iterative process

13

## San Filippo Site

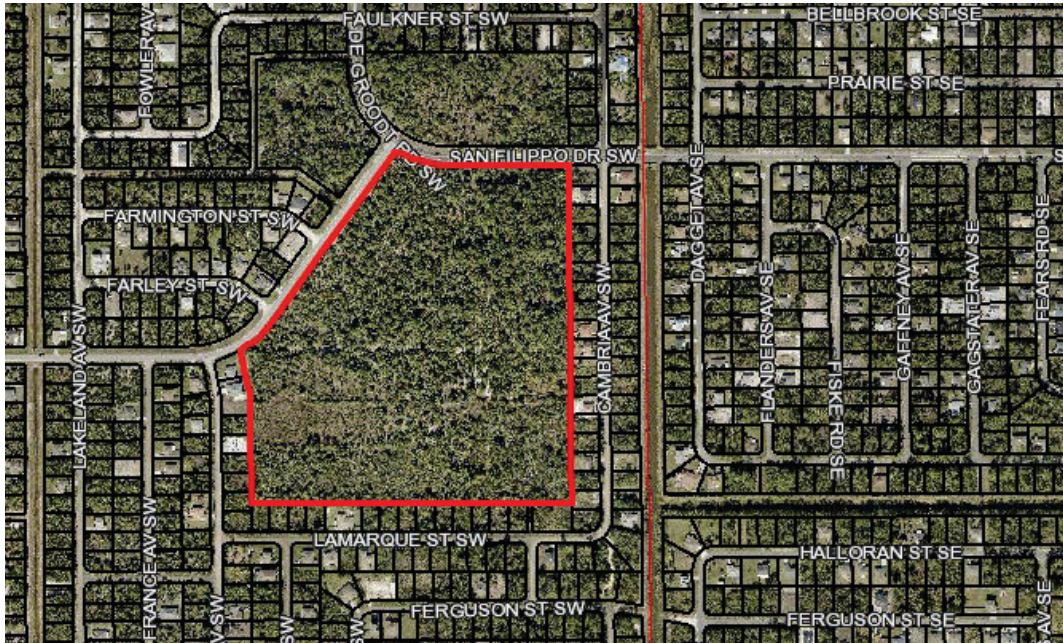


Corner of San Filippo and DeGroot (about 2.5 miles south of Bayside High)

14



# San Filippo Site

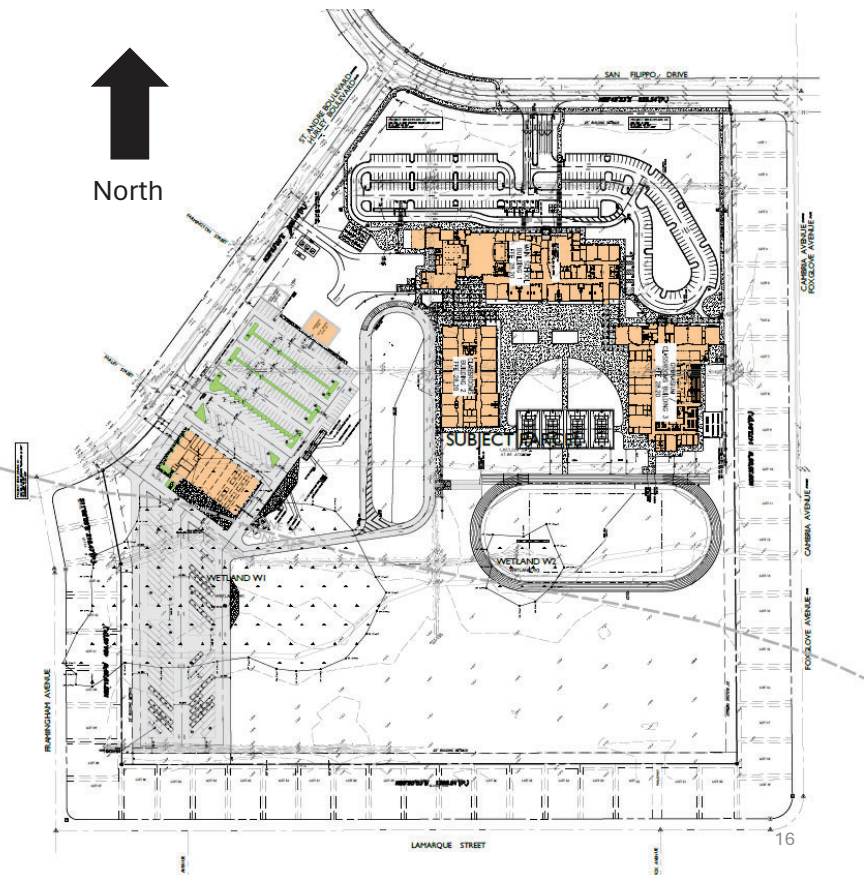


15

# San Filippo Site



- Site can fit new transportation & maintenance facility and middle school footprint
- Can start site planning and design
- Transportation facility – capital funding
- New school – future educational impact fee funding



16



# Strategic Promotion of BPS

- Analysis of market drivers
- Best practices used by other educational providers and other districts
- Cross-functional approach
- Consider supplemental consultant resources; evaluate cost and return on investment

17



18