

# PARENT RESOURCE GUIDE



Brevard  
Public  
Schools



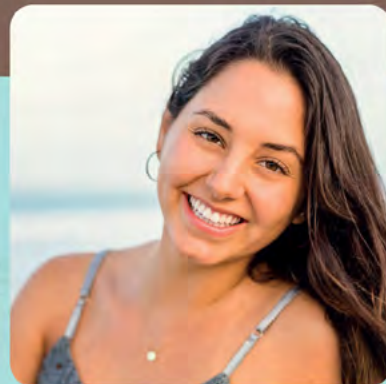


Actual Schumacher Orthodontics Patients

SPECIALIZING IN  
**BRACES** AND  
invisalign®



## CREATING BEAUTIFUL SMILES FOR PATIENTS OF ALL AGES



**RYAN M. SCHUMACHER, DMD, MS**  
BOARD CERTIFIED & MAYO CLINIC TRAINED

**Schumacher**  
ORTHODONTICS

**321.773.3441**

[WWW.SCHUMACHERSMILES.COM](http://WWW.SCHUMACHERSMILES.COM)

AUGUST	2-9	FRI-FRI	Teachers Report Pre-Planning
	12	MON	First Day Of School for Students
	15	THURS	Kindergarten Starts
	19	MON	VPK Starts
SEPTEMBER	2	MON	Labor Day - Holiday for All
OCTOBER	7-11	MON-FRI	FTE Survey II
	14	MON	Teacher Work Day/ Student Holiday
NOVEMBER	11	MON	Veterans' Day/ Holiday for All
	25-29	MON-FRI	Holiday for All/Thanksgiving
	25-27		Hurricane Make Up Days if Needed*
DECEMBER	18-20	WED-FRI	Exam days/Early dismissal End of First Semester
	23-31	MON-TUES	Winter Break Teacher/ Student Holiday
JANUARY	1	WED	Holiday For All
	2-3	THURS-FRI	Winter Break- Teacher/ Student Holiday
	6	MON	Teachers/ Students Return
	20	MON	Martin L. King, Jr. Day - Holiday for All
FEBRUARY	3-7	MON-FRI	FTE Survey III
	17	MON	President's Day - Teacher PD Day/ Student Holiday/Make Up Day*
MARCH	14	FRI	Teacher Work Day/ Student Holiday
	17-21	MON-FRI	Spring Break
APRIL	18	FRI	Teacher/ Student Holiday/ Make Up Day if Needed*
MAY	23-28	FRI-WED	Exams Days/Early Dismissal
	26	MON	Memorial Day - Holiday for All
	28	WED	End of Second Semester / Last Day for Students
	29	THURS	Post Planning/ Last Day for Teachers

## 2024 - 2025 Brevard County School Calendar

Early Release Day every Friday  
beginning August 16<sup>th</sup>

Student Days 1<sup>st</sup> Semester – 89

Student Days 2<sup>nd</sup> Semester – 91

\* Make-up days for inclement weather  
include November 25<sup>th</sup>, 26<sup>th</sup>, 27<sup>th</sup>  
February 17<sup>th</sup>, and April 18<sup>th</sup>

The order for using make up days for schools  
closed due to emergencies will depend on  
where the emergencies fall during the  
school year.

PAID HOLIDAYS FOR  
TEACHERS SUBJECT  
TO NEGOTIATION.

**Goff Orthodontics**  
is a Proud Supporter of



**GOFF**  
ORTHODONTICS

**CALL TODAY!**  
**321-779-0000**  
[GOFFORTHODONTICS.COM](http://GOFFORTHODONTICS.COM)



# Table of Contents

School Calendar	1
School Board	5
School Enrollment	6
Immunizations	7
Mental Health	7
Responsibilities of Parents and Legal Guardians	8
Opt Out Directory Options	8
Compulsory School Attendance	9
School Security	10
Transportation Services	14
Food & Nutrition Services	15
Brevard Schools Foundation	18
Information Rights of Parents / Title I	19
Map	20
Students in Transition / Exceptional Student Education	22
English for Speakers of Other Languages (ESOL)	23
Voluntary Prekindergarten	24
Head Start	25
Brevard Before & After School	26
Elementary Programs	27
High School Programs	31
High School Graduation Requirements	33
What Students and Parents/Legal Guardians Need to Know	34
Career and Technical Education	36
Join Team BPS	37
Non-Discrimination Notice	38



# Welcome to Brevard Public Schools

## VISION

Brevard Public Schools will serve its community and enhance students' lives by delivering the highest quality education in a culture of dedication, collaboration, and learning.

## MISSION

To serve every student with excellence as the standard.

Brevard County is a diverse community of just over 600,000 residents. Brevard Public Schools (BPS) serves roughly 74,000 students in grades PreK-12, and the school district itself employs approximately 8,000 staff members, making it one of the largest employers in the county. With 84 schools, 15 special centers, and 12 charter schools, the district educates its students in 16 different municipalities across the Space Coast.

BPS students are engaged in challenging and varied curriculum. Students can choose from a wide range of learning opportunities including over 40 Career and Technical Education (CTE) programs, dual-enrollment courses with local colleges and universities, and choice schools focusing on science, technology, engineering, arts, and math.

Our top priority remains the safety and well-being of our students. Every school is served by a team that includes law enforcement and mental health experts, and all campuses are safeguarded with a single, secure point of access. Furthermore, the district's mental health plan provides direct access to a range of mental health supports for students and families and promotes a positive school climate.

To learn more about Brevard Public Schools and parent involvement opportunities, you are encouraged to visit the BPS website, [www.brevardschools.org](http://www.brevardschools.org), or contact your school's administration.







### Purple Star School of Distinction and Purple Star School District Designations

Per the Florida Department of Education, the Florida Purple Star School of Distinction Designation was established by the Florida legislature in 2021 and further defined in Rule 6A-1.0999, Florida Administrative Code (F.A.C.). The Florida Purple Star School District Program was established by the Florida legislature in 2024. Once awarded, schools and districts will maintain their designation as a Purple Star School of Distinction or Purple Star School District for three school years.

The purpose of the Purple Star School of Distinction Designation and Purple Star School District Program is to recognize schools that support the unique needs of military families, help military-connected students navigate critical challenges and provide resources for military-connected students when transitioning to a new school environment.

For more information on the Florida Purple Star School of Distinction Designation and Purple Star School Districts, please contact [PurpleStarSchools@fldoe.org](mailto:PurpleStarSchools@fldoe.org).

For information on the Florida Collegiate Purple Star Campus program, please visit: <https://www.fldoe.org/schools/higher-ed/fl-college-system/military/purple-star.stml>.



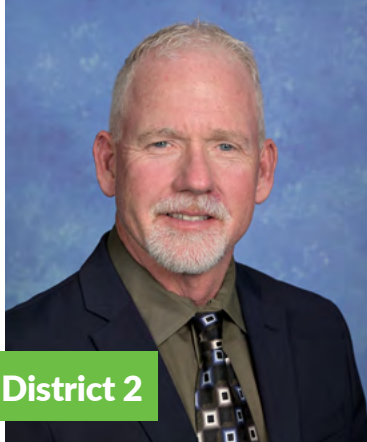
# Brevard County School Board



**District 1**

**Megan Wright**  
**Mobile: (321) 429-1753**  
**Office: (321) 633-1000 ext. 11412**  
[wright.megan@brevardschools.org](mailto:wright.megan@brevardschools.org)

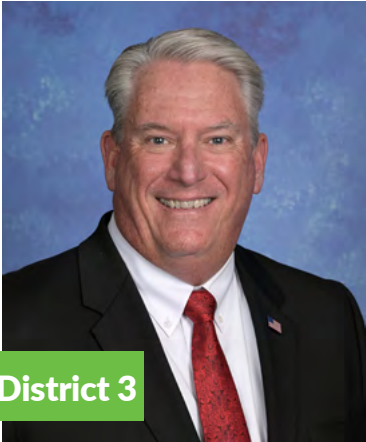
**Schools Represented:**  
 Apollo Elem. | Astronaut High | Atlantis Elem. | Challenger 7 Elem. | Coquina Elem. | Enterprise Elem. | Fairglen Elem. | Imperial Estates Elem. | Jackson Middle | Madison Middle | Mims Elem. | Oak Park Elem. | Pinewood Elem. | South Lake Elementary | Space Coast Jr/Sr | Titusville High



**District 2**

**Gene Trent**  
**School Board Chairperson**  
**Mobile: (321) 429-1733**  
**Office: (321) 633-1000 ext. 11412**  
[trent.gene@brevardschools.org](mailto:trent.gene@brevardschools.org)

**Schools Represented:**  
 Andersen, Hans Christian Elem. | Audubon Elem. | Cambridge Elem. | Cape View Elem. | Carroll, Lewis Elem. | Cocoa Beach Jr/Sr | Cocoa High | Edgewood Jr/Sr | Endeavour Elem. | Freedom 7 Elem. | Golfview Elem. | Jefferson, Thomas Middle | Kennedy, John F. Middle | McNair, Ronald Middle | Merritt Island High | MILA Elem. | Rockledge High | Roosevelt, Theodore Elem. | Saturn Elem. | Stevenson, Robert L. Elem. | Tropical Elem.



**District 3**

**John Thomas**  
**Mobile: (321) 987-7961**  
**Office: (321) 633-1000 ext. 11412**  
[thomas.john@brevardschools.org](mailto:thomas.john@brevardschools.org)

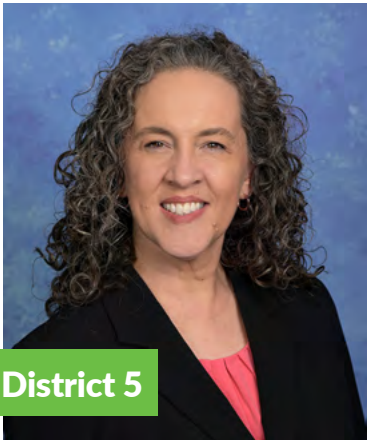
**Schools Represented:**  
 Central Middle | Columbia Elem. | Gemini Elem. | Meadowlane Intermediate | Meadowlane Primary | Palm Bay Elem. | Palm Bay High | Port Malabar Elem. | Riviera Elem. | Stone Middle | University Park Elem. | West Melbourne School for Science



**District 4**

**Matt Susin**  
**Vice Chairperson**  
**Mobile: (321) 684-9735**  
**Office: 633-1000 ext. 11412**  
[susin.matthew@brevardschools.org](mailto:susin.matthew@brevardschools.org)

**Schools Represented:**  
 Creel, Dr. W.J. Elem. | Croton Elem. | Delaura Middle | Eau Gallie High | Holland Elem. | Johnson, L.B. Middle | Longleaf Elem. | Manatee Elem. | Ocean Breeze | Quest Elem. | Sabal Elem. | Satellite High | Sea Park Elem. | Sherwood Elem. | Suntree Elem. | Surfside Elem. | Viera Elem. | Viera Middle | Viera High | Williams, Ralph M. Jr. Elem.



**District 5**

**Katie Campbell**  
**Mobile: (321) 271-9946**  
**Office: (321) 633-1000 ext. 11412**  
[campbell.katie@brevardschools.org](mailto:campbell.katie@brevardschools.org)

**Schools Represented:**  
 Roy Allen Elem. | Bayside High | Discovery Elem. | Harbor City Elem. | Heritage High | Hoover Middle | Indialantic Elem. | Jupiter Elem. | Lockmar Elem. | McAuliffe Elem. | Melbourne High | Southwest Middle | Sunrise Elem. | Turner, John F. Elem. | West Shore Jr./Sr. | Westside Elem.



**Mark J. Rendell, Ed.D.**  
**Superintendent of Schools**  
**(321) 633-1000, ext. 11401**  
[rendell.mark@brevardschools.org](mailto:rendell.mark@brevardschools.org)





# School Enrollment Information

**INSTRUCTIONS:** Please gather the following documents to present to your child’s school in order to register a student new to Brevard Public Schools. As a reminder, to enter kindergarten, children must be 5 years old on or before September 1. To enter first grade, children must be 6 years old on or before

*First Time Entry - To register your child in school, the following documentation is needed:*

- September 1.
- 1. Verification of age (with one of the following):**
- A. Transcript of child’s birth (Birth Certificate)
  - B. Insurance policy
  - C. Passport
  - D. School record
  - E. Certification of baptism, accompanied by parent’s affidavit
  - F. Bona fide Bible record, accompanied by parent’s affidavit
  - G. Affidavit of age sworn by parent, accompanied by a medical practitioner’s statement
- 2. Verification of legal name:**
- A. Birth Certificate
- 3. Verification of immunizations and physical exam:**
- A. Proof of Immunizations of Department of Health Form 680, which can be obtained at one of the Department of Health locations: Titusville Clinic, 611 Singleton Ave; Viera Clinic, 2555 Judge Fran Jamieson Way; and Melbourne Clinic, 601 E. University Boulevard.
  - B. Proof of physical examination by a U.S. doctor within the last year. If documentation cannot be provided, a physical examination must be scheduled within thirty (30) days. *\*Please note that thirty (30) days is not extended to PreK and Kindergarten students.*
- 4. Verification of academic history**
- A. Transcript
  - B. Last report card
  - C. Withdrawal form
- 5. Verification of Exceptional Student Education information**
- A. Current IEP
  - B. Current 504 Plan

**6. Verification of your residence (domicile) with one of the following from each tier:**

- TIER 1**
- A. Current driver license (Section 322.19(2), F.S. requires that you update your address information on your driver’s license within thirty (30) calendar days of moving)
  - B. Purchase Contract (with expected closing date within ninety (90) days of school) or Warranty Deed
  - C. Lease/rental agreement (with your name as the renter)

- TIER 2**
- A. Current utilities statement (within the last 30-45 days)
  - B. Florida Voter Registration Card
  - C. Florida Vehicle Registration or Title
  - D. A utility hook up or work order dated within 60 days
  - E. Medical or health card with address listed
  - F. Current homeowner’s insurance policy or bill
  - G. Current automobile insurance policy or bill
  - H. A letter from a homeless shelter, transitional service provider, or a halfway house verifying you receive mail at that address.
- PLEASE BE ADVISED:** *The students of parents/ guardians who falsify address information will be withdrawn and required to enroll at the zoned school. Student may forfeit any future opportunity to attend a school other than his/her zoned school.*

- 7. Verification of Legal Guardianship –** If you are not the legal guardian or residential custodial parent of a student, Brevard Public Schools’ procedures require that one of the following documents be provided for enrollment:
- A. Court custody documentation (must include divorce decree and parenting plan signed by a judge)
  - B. Educational Power of Attorney - Please utilize Brevard Public Schools’ Educational Power of Attorney form available from the school.
  - C. Educational Guardianship Affidavit - Please utilize Brevard Public Schools’ Educational Guardianship Affidavit Form. This form will be accepted only when parents or custodial parent lives outside Brevard County, Florida and adjacent counties.
  - D. Department of Children and Families placement letter.

# Immunization Requirements 2024-25

GRADE LEVEL	SHOTS REQUIRED		Notes of Exception:
Pre K	<ul style="list-style-type: none"><li>• 4 DTaP</li><li>• 1 MMR</li><li>• 3 Hep B</li><li>• 1-4 PCV</li></ul>	<ul style="list-style-type: none"><li>• 3 Polio*</li><li>• 1-4 HIB (age appropriate)</li><li>• 1 Varicella (or certification of disease)</li></ul>	
Kindergarten	<ul style="list-style-type: none"><li>• 4-5 DTaP**</li><li>• 2 MMR</li><li>• 1 Varicella (or certification of disease)</li></ul>	<ul style="list-style-type: none"><li>• 3-5 Polio (last dose must be after age 4)</li><li>• 3 Hep B</li></ul>	
1-6	<ul style="list-style-type: none"><li>• 4-5 DTaP**</li><li>• 2 MMR</li><li>• 2 Varicella (or certification of disease)</li></ul>	<ul style="list-style-type: none"><li>• 3-4 Polio*</li><li>• 3 Hep B</li></ul>	
7-12	<ul style="list-style-type: none"><li>• 4-5 DTaP**</li><li>• 2 MMR</li><li>• 2 Varicella (or certification of disease)</li></ul>	<ul style="list-style-type: none"><li>• 1 Tdap</li><li>• 3 Hep B</li><li>• 3-4 Polio*</li></ul>	

- A child who commenced vaccination after 7 years of age would have only 3 Tdap/TD doses.
- DTP is acceptable for DTaP.
- \* 3 Polio doses are accepted only if the last dose is given after 4 years of age and 6 months after the 2nd dose.
- \*\* 4 DTaP doses are accepted only if the last dose is given after 4 years of age and 6 months after the 3rd dose.

Brevard Public Schools’ mental health plan provides direct access to a continuum of mental health supports for students and families that will foster academic success and positive lifelong outcomes.

## Mental Health Systems of Support



**211 Brevard** provides immediate assistance and connects people to community resources in times of personal, financial, and community crisis. Call 211 or click the link above.

**BPS Community Connect** is a free website to locate and connect with a variety of agencies, resources, and supports in your area. Click the link above to access.

**988 Lifeline** provides free emotional support to people in suicidal crisis or emotional distress 24 hours a day, 7 days a week. Call 988 or click the link above.

Reach out to your child's school for additional resources and support. For more information, please visit the [Psychological and Mental Health Services website](#).



# Responsibilities of Parents and Legal Guardians

School and parent partnerships are critical to ensuring that all students are properly supported and that staff have the information they need to assist students.

- All parents and legal guardians should verify that their child’s school has accurate information for parent and emergency contacts.
- Parents and legal guardians are responsible to promptly pick up or properly arrange for the pick-up of a student sent home from the clinic. All parents and legal guardians should carefully select emergency contacts for their child and ensure that the contact information is accurate.
- All parents and legal guardians should provide complete and accurate medical information to the school.
- Any parent or legal guardian leaving their child in the care of someone else for a short-term reason, such as work or a family emergency, should prepare a written statement explaining the reason for the arrangement. This statement should include the child’s name, date of birth, the guardian’s phone number, the name of the caregiver, and a copy of the guardian’s photo ID.
- All medications must be brought, in the original container, directly to the clinic by the parent or legal guardian.

## Opt-Out Directory Provision

Brevard Public Schools has a policy to safeguard students’ directory information from being released to commercial entities, non-profit agencies or individuals. This information includes student:

- **date of graduation or program completion**
- **date and place of birth**
- **names**
- **addresses**
- **phone numbers**
- **participation in school activities and sports**
- **honors and awards**
- **height and weight of athletic team members**
- **dates of attendance**

The district takes the responsibility of safeguarding your child’s school records very seriously and follows state and federal regulations regarding the release of such information. “Directory Information,” as defined by the Family Educational Rights and Privacy Act (FERPA), allows the disclosure of certain student information including names and addresses, without prior written consent, unless a parent has opted out. The primary purpose of directory information is to allow the district to include this type of information from your child’s records in certain school publications. Examples include: graduation lists, recognition lists, sports activity sheets and playbills.

In accordance with School Board Policy 8330, if you do not want BPS to disclose your child’s allowable directory information, without your prior written consent, you must notify the district in writing. The opt-out form is available at your child’s school.

# Compulsory School Attendance

## Attendance Policy

In accordance with [Board Policy 5200](#) – Attendance, the educational program offered by this District is predicated upon the presence of the student and requires continuity of instruction and classroom participation. Attendance shall be required of all students enrolled in the schools during the days and hours that the school is in session. School attendance shall be the responsibility of parents/legal guardians and students. A student who is not present for his or her instructional classes or program at school on a school day is marked absent.

Absences shall be reported to the school by the parent/legal guardian or eligible student as soon as practical.

In accordance with statute, the Superintendent shall require, from the parent/legal guardian of each student of compulsory school age or from an eligible student who has been absent from school or from class for any reason, a statement of the cause for such absence. The Board reserves the right to verify such statements and to investigate the cause of each single absence.

In addition, educators shall have the responsibility of encouraging regular attendance of students, maintaining accurate attendance records, and following reporting procedures prescribed by the Superintendent as follows:

- A. Teachers shall record absentees each period of the school day and report absences as required by the school;
- B. Parent/legal guardians should be notified each time their child is absent to prevent the development of patterns of nonattendance;
- C. When a student has at least five (5) unexcused absences or absences for which the reasons are unknown the principal or designee will refer the case to the schools’ child study team to determine if early patterns of truancy are developing. If the child study team finds that a pattern of nonattendance is developing, a meeting with the parent must be scheduled to identify potential remedies. If the problem is not resolved, the child study team will implement interventions set forth in, and act in accordance with, the requirements in;
  - If a parent refuses to participate in the remedial strategies determined by the child study team because s/he believes that the strategies are unnecessary or inappropriate, the parent may appeal to the principal or designee.
  - If the principal’s or designee’s final determination is that the strategies of the child study team are appropriate, and the parent still refuses to participate or cooperate, the superintendent or designee may seek criminal prosecution for noncompliance with compulsory school attendance.
- D. Absences must be reported in writing to the school by the parent/legal guardian or eligible student as soon as possible. Failure to report and explain the absence(s) shall result in an unexcused absence(s). The final authority for determining acceptability of the reason for the absence(s) shall rest with the principal.

**A student is considered to be present at school if away from school on a school day and engaged in an educational activity that constitutes a school approved instructional program or activity.**

**All students must be in attendance a minimum of four hours to participate in extracurricular activities.**

To read the full Attendance Policy, see the Student Code of Conduct



# School Security

On behalf of Sheriff Wayne Ivey and our Brevard Chiefs of Police, we thank you for trusting us with the safety of your children. We work closely with the board and Superintendent Dr. Mark Rendell to ensure staff and students are well-prepared in the event of an emergency. We take this task seriously, as every student should feel safe while at school where they have the freedom to learn and grow while just being a kid. It takes everyone - our staff, our law enforcement, and parents/guardians to help with this vital mission. We say it over and over, "if you see something, say something." Information is our first line of defense, so please never hesitate to call law enforcement if you feel it's warranted. Law enforcement and leadership at the school district have worked diligently to make safety a priority. This priority is being accomplished on many fronts, including armed law enforcement and/or guardian presence, school hardening construction, technology, and procedures, including practicing for emergencies, to name just a few. This translates down to each school and their leadership teams working with law enforcement and their staff to practice and be well-prepared for any situation. We understand the tragedies across the nation cause great concern, but please know your first responders and school administrators are extremely prepared and always put your children's safety first.

Major Robert Cline  
Brevard County Sheriff's Office Command Staff  
District & School Security  
2700 Judge Fran Jamieson Way  
Viera, FL. 32940

**Understand the information that follows, as it will help guide you in the event of an emergency.**

## SCHOOL VISITORS:

Because the safety of our students (your children) and employees is a top priority, all visitors, including parents, must sign in at the main office, present a picture ID to office personnel, and obtain a visitor's badge/pass. Visitors are not allowed to be inside the school without a visitor's pass at any time. Anyone without a pass will be directed to the office to obtain one. Failure to comply will result in the administration taking your behavior as a serious safety incident.

### Florida State Statute 810.097

Trespass upon grounds or facilities of a school;

penalties: arrest. (1) Any person who (a) Does not have legitimate business on the campus or any other authorization, license, or invitation to enter or remain upon school property; or (b) Is a student currently under suspension or expulsion.

## SAFETY DRILLS:

Schools are required by law to practice emergency response procedures by conducting practice drills throughout the school year. These practice drills include Evacuation (Fire Drill), Lockdown, Shelter in Place, and Severe Weather. We conduct our drills in a manner that does not incite fear into your student but prepares them for what to do in an emergency. Please be aware that during practice drills, parents will be asked to participate in the drill if they are at a school and follow response procedures according to the drill.

- If you arrive to the campus during a lockdown drill, you will be asked to wait outside the campus until the drill concludes.
- If you are inside the building and are asked to go into lockdown, you will not be able to leave until the drill has ended.
- If you are picking up your child from school, you will be asked to wait until after the drill has ended.

## HOW YOU CAN PREPARE FOR A SCHOOL EMERGENCY:

Be sure all your emergency contact information is current and correct. Contact the school immediately whenever your work, home, or cell phone number changes. Identify who is authorized to pick up your child, if you are not able to respond. Make sure their contact information is current and correct. Please note that your child will only be released to parents or individuals listed on the emergency contact form. It is important to notify the school if you are going through any legal matters: Custody Issues, Protective Orders, or Guardianship. Make sure your child knows their parents' or guardians' names, addresses, and phone numbers. If there is only one parent or guardian, your child should have contact information for a second responsible adult. Talk with your child about the importance of remaining calm and following instructions in the event of an emergency. If an emergency occurs while they are at school, their teacher will provide them with appropriate instructions and information. Whenever you are on

school grounds, remain alert to activity in and around the school. Report any suspicious activity to school administration, so they can investigate.

### Social media and inaccurate information.

On many occasions, we have witnessed parents and others posting inaccurate information that quickly spreads and creates undue panic and response to schools that is unwarranted. If you believe you have information that is critical to safety, contact your local law enforcement. Don't post it!

## RESPONDING TO A SCHOOL EMERGENCY:

The most helpful parental responses to a school emergency are to remain calm, be patient, and wait for accurate information. It is important for you to understand that during such an event, individual schools and emergency responders have prepared to deal with these incidents. Please do not call the school. It is essential to keep phone lines open, so school officials can make outgoing emergency calls. Please refrain from going to the school.. As we have learned from past school emergencies, one of our greatest challenges is managing parents and concerned citizens rushing to the scene to "help." By doing so, parents can inadvertently create traffic jams that may block emergency responders from getting to the scene or leaving, if necessary, to transport injured staff or students to emergency medical facilities.

- Remain calm, follow procedures, and cooperate with school and first responders.
- Remain close to the phone listed as your emergency contact number.
- Tune in to reliable radio or television stations

for updates.

- Obtain current information about the incident from the School District's website.

### Follow the district and your local law enforcement on Social Media!

The School District's Office of Communications is also a resource for breaking news. Follow Brevard Public Schools on Facebook, Twitter, and Instagram. Understand that emergency pickup procedures are different than routine pickup procedures. In the event you are notified to pick up your child at school or at the designated reunification site, bring a photo identification card. Once on-site, greeters will direct you in the process. Be patient. It is essential that the family reunification procedure be carried out in an orderly manner, so we can protect and account for all students.

## ANONYMOUS REPORTING PROGRAMS:

Crimeline/Speakout and FortifyFL  
(800) 423-TIPS

[SpeakOutHotline.org](http://SpeakOutHotline.org)

Students, parents, or anyone can anonymously report a crime and earn a reward. To share a tip, students can call the hotline, or download the FREE app (P3 campus available on Android and iOS). The student may be asked some questions but will NOT be asked to give their name. If given by the app, students may be asked additional questions. If the information provided results in a success, they will be given further instructions on how to collect their reward. Please refer to the proceeding pages for additional information on both applications.





# KEEP YOUR SCHOOL SAFE

(give an anonymous tip)



# SpeakOut

## 800.423.TIPS

SpeakOutHotline.org

PD by CSTF



## FORTIFYFL

SUSPICIOUS ACTIVITY REPORTING APP

### QUICKLY AND EASILY SUBMIT A TIP

By accessing FortifyFL, students can provide a description of the threat, share pics and videos and optionally submit their contact information.

#### Anonymous or Non-Anonymous

You decide whether you want to include your name and contact information.

#### Convenient

Submitting a tip is quick and easy using our mobile app or website.

#### Include Photos and Video

You can also include photos or video with your tip report.

### QUICKLY SEND TO AUTHORITIES

FortifyFL automatically routes your tip report to the appropriate law enforcement agencies and school officials.



#### Your School Officials

The tip report goes to your local school officials when submitted.

#### Local Law Enforcement

Your local police department or sheriff office receive copies of your tips automatically.

#### State-Level Officials

State-level officials also have access to your tips to make sure proper steps are taken.

FortifyFL is a suspicious activity reporting tool that allows you to instantly relay information to appropriate law enforcement agencies and school officials. FortifyFL was created and funded by the 2018 Florida Legislature as part of the Marjory Stoneman Douglas High School Public Safety Act.

#FORTIFYFL  
GETFORTIFYFL.COM



FLORIDA DEPARTMENT OF  
EDUCATION  
fldoe.org



# Transportation

Safe and effective transportation works best when parents and staff work together to ensure an optimal environment for riding the bus.

- The parents/guardians shall ensure the safe travel of their students during portions of each trip to and from school and home when the students are not under the custody and control of the school district, including during each trip to and from home and the assigned bus stop when the school district provides bus transportation.
- The parents/guardians shall ensure that when the physical disability of the student renders the student unable to get on and off the bus without assistance, the parent or guardian shall provide the necessary assistance to help the student get on or off at the bus stop, as required by district policy or the student's individual education plan. (FAC 6A-3.0121)
- The driver is in full charge of the bus and students. Students must obey the driver at all times and follow the posted rules for riding the school bus.
- Students must be at the bus stop on time. The bus will not wait for students who are tardy. Plan to be at the bus stop no less than five (5) minutes prior to bus arrival.
- Never chase after a bus that has pulled away from the bus stop or has pulled away in the bus loop.
- Stand five (5) feet off the roadway at all times while waiting for the bus. Avoid horseplay at the bus stop and always respect the privacy and property of others. A student's parent or guardian has responsibility for the control and direction of students at the bus stop.



## Food and Nutrition Services

Fueling student success by providing nutritious meals at an affordable price while promoting sound eating habits that foster good health and academic achievement.

- Our district serves over 10.1 million meals a year.
- Brevard County Registered Dietitians plan school menus to ensure the USDA national guidelines are met.
- Breakfast and lunch menus are available for each school on Nutrislice. Visit <https://brevard.nutrislice.com/menu>
- Breakfast is FREE for ALL students.
- Free and Reduced Meal Applications are available online at [Free and Reduced Lunch Applications | Brevard Public Schools \(brevardschools.org\)](https://www.brevardschools.org/free-reduced-lunch-applications)
- Set up your student's cafeteria account at <https://www.mypaymentsplus.com/welcome>. The service is free and eliminates lost or forgotten lunch money.
- We teach nutrition daily with our DOTS line signs. These signs help students identify food groups and make healthy meal choices.
- Please contact Food & Nutrition Services with any allergies or medical conditions that require accommodation.

### Follow us:

- On our website - <https://www.brevardschools.org/o/bps/page/food-nutrition-services>
- On Facebook - [www.facebook.com/bpsfns](https://www.facebook.com/bpsfns)
- On Instagram - [www.instagram.com/bpsfns](https://www.instagram.com/bpsfns)





Brevard  
Public  
Schools

REA X IUM  
School Bus



### Dear Parents, Guardians, & Families:

We understand how important it is for you to have peace of mind while your children are onboard Brevard Public Schools' transportation.

School days can be stressful. Getting ready for work, getting children ready for school, making sure they get to the school bus on time, and wondering when and where they are boarding and exiting the bus.

Families put their children's safety first, and so does BPS and its partners. That is why the school district has partnered with ReaXium, a Florida technology integrator, to bring families peace of mind. When it comes to student safety, it all begins on the school bus trip to school. Our commitment is to keep the yellow school bus the safest ride for your children!

### How do we make this happen?

Brevard Public Schools buses have been outfitted with a computer tablet to guide drivers during the trip and alert them to the correct students to load or unload at each stop.

When the bus arrives at a stop or at a school, students "check-in" or "check-out" at a tablet with their district-issued bus badge to ensure they are registered.

**Families need to make sure their children have their badges to ride the school bus each day.**

Each school will have access to their particular students with real-time updates through the ReaXium Ridership Solution in an effort to provide the best service to families and students.

Best of all, you as a parent or guardian will have access to your student bus information at your fingertips with MyReaXiumApp.

[www.brevardschools.org](http://www.brevardschools.org)



REA X IUM  
Parent App

### About the app...

With MyReaXiumApp, know where the school buses are and get real-time notifications regarding your child's estimated pick up time, drop off time, and their status during the routes.



## Stay connected with your child at all times with MyReaXiumApp



Visibility



Safety



Peace of mind

### Track the Bus Location

Track the location of your child's school bus in real-time so you always know when the bus is right around the corner!

### Get Notified of Unforeseen Changes

If, your child's school bus experiences an incident or delay, the application will notify you.

### Monitor Your Students

When your child boards or exits a bus by scanning their badge, you can see the bus information, pickup/dropoff location, and time when the event occurred.

### Ensure The Right Bus & Stop

If your child gets on the wrong bus or gets off at the wrong stop by mistake, irregular events like this will be flagged and the bus/location where they occurred can be consulted. ReaXium helps drivers redirect your child to where they need to be.



### HOW TO GET STARTED?

As an authorized student contact, you will receive an invitation email. If you have not received it via email, you can request an invitation code through the MyReaXiumApp, by scanning the QR code for our website, or through your district's website.

[www.reaxium.com](http://www.reaxium.com)



# The Brevard Schools Foundation

Brevard Schools Foundation fills educational funding and opportunity gaps at all our 86 public schools for more than 70,000 students and 5,000 teachers by supporting innovation, engaging communities, and changing lives. Brevard Schools Foundation has provided over \$70 million in support to Brevard Public Schools since 1987. Funds come from private contributions, corporate support, public matching funds, fundraising and endowments. The Brevard Schools Foundation has been nationally ranked for their role in supporting public education in Brevard County and earned the designation of “Foundation of Excellence” from the Consortium of Florida Education Foundations.



## Programs of Brevard Schools Foundation include:

- **Supply Zone for Teachers -**  
a school supply resource center getting free school supplies to where they are needed most.
- **Take Stock in Children -**  
a scholarship and mentorship program providing college readiness services for our most vulnerable youth.
- **Bright Ideas Classroom Grants -**  
mini grant program funding creative and innovative classroom projects to support student achievement
- **Discover Brevard -**  
funding school field trip programs including Brevard Symphony Orchestra, Destination Space, and the Moore Cultural Center
- **Scholarships -**  
scholarships for graduating senior making college and post-high school education more affordable and accessible
- **Annual Teaching Quality and Recognition -**  
includes the Teacher Leadership Council, the TLC Fellowship Program, and the Annual Teacher of the Year and Employee of the Year Awards.
- **Direct support to schools,** and much, much more

## The Foundation also offers many volunteer opportunities, including but not limited to:

- **Supply Zone for Teachers -**  
volunteers serve one-time and ongoing opportunities to help sort, organize, and pack teacher/student supplies; assist teacher shops at the store; coordinate or assist with special events; coordinate school supply and/or hygiene collections at work, community, church, and school locations.
- **Take Stock in Children -**  
volunteers serve as a mentor for students in the program through weekly in-person and/or virtual visits; assist with special events and learning opportunities.
- **Scholarship -**  
volunteers read and score graduating senior scholarship applications (Feb – April).
- **Foundation Board of Directors or Board Committee -**  
serve as a volunteer Board member or committee member, such as Audit committee or Special Events.
- **Host a Launch to Success Tour -**  
to share information about Foundations programs and opportunities.
- **Special Event and Special Program -**  
volunteers are also welcome to assist with event planning and event ambassadors, special grant, and other program needs.

For volunteer opportunities and to learn more about their mission, please visit <http://www.brevardschoolsfoundation.org>, or contact Janice Kershaw, President and CEO and the Foundation’s team at (321) 633-1000, ext. 11756 or [info.bsf@brevardschools.org](mailto:info.bsf@brevardschools.org).

# Information Rights of Parents

Every parent has the right to request information about the professional qualifications of the teacher(s) and any teacher assistant(s) who serve their children. Parents can request this information from their child’s teacher or a school administrator.

The Every Student Succeeds Act (ESSA) requires the district to notify parents when their child/children are being taught by a teacher that is not state-certified in the subject area they are teaching after four (4) consecutive weeks. If this occurs, the school will notify parents via a Right to Know letter giving them information regarding qualifications of their child’s teacher. ESSA states that the district and each school receiving Title I school, Part A funds must develop a Parent and Family

Engagement Plan (PFEP). These plans are developed yearly by schools, with input from parents, staff, and community members. The plan outlines the needs of families, training that will be provided, barriers to family engagement and what the school will do to address them. How the school coordinates with the district and other community partners is also described in the plan. Schools create brochures available in Spanish and other languages as needed, that summarize the PFEP. The brochures are distributed to all parents and family members. Information about PFEP’s and Title I can be found in the Federal Programs section of the BPS website, under the Title I, or by calling (321) 633-1000, ext. 11336.

## Title I

Title I is a federally funded program designed to improve academic achievement. The Title I Department’s vision is that all children have a fair, equal, and significant opportunity to obtain a high-quality education and reach, at minimum, proficiency on challenging state academic achievement standards and state academic assessments. The district uses direct certification data to determine eligibility. Schools with high poverty rates qualify for Title I funds based on their direct certifications data. A school must meet the threshold as defined by the district (LEA). The Title I project serves 41 Brevard Public Schools sites. Title I provides support through district resources and research-based training, enabling schools to develop high quality, supplemental programs that meet the individual needs of children, families, and staff. By providing a positive, caring environment with high

educational expectations, Title I ensures that all individuals feel capable, connected, and able to make worthwhile contributions to their community.

### Coordination with other agencies:

Title I coordinates services with other agencies throughout Brevard County. These agencies include: Adult Education, Brevard Zoo, Eastern Florida State College, Head Start, Juvenile Justice, Kennedy Space Center, Patrick Space Force Base, The Florida Department of Health, UCF, United Way, English for Speakers of other Languages, Brevard C.A.R.E.S, Eckerd Connects, Orlando Science Center, and Rolling Readers.

Title I schools:		
– Andrew Jackson Middle School	– Golfview Elementary Magnet School	– Palm Bay Elementary School
– Apollo Elementary School	– Hans Christian Andersen Elementary School	– Palm Bay Magnet High School
– Cambridge Elementary School	– Harbor City Elementary School	– Pinewood Elementary School
– Challenger 7 Elementary School	– Imperial Estates Elementary School	– Port Malabar Elementary School
– Christa McAuliffe Elementary	– James Madison Middle School	– Riviera Elementary School
– Cocoa High School	– Jupiter Elementary School	– Ronald McNair Magnet Middle School
– Columbia Elementary School	– Lockmar Elementary School	– Sabal Elementary School
– Coquina Elementary School	– Lyndon B. Johnson Middle School	– Saturn Elementary School
– Croton Elementary School	– MILA Elementary School	– Sherwood Elementary School
– Discovery Elementary School	– Mims Elementary School	– South Area Alternative Learning Center
– Dr. W. J. Creel Elementary School	– North/Central Alternative Learning Center	– Stone Magnet Middle School
– Emma Jewel Charter Academy	– Oak Park Elementary School	– Turner Elementary School
– Endeavour Elementary School	– Palm Bay Academy Charter School	– University Park Elementary
– Fairglen Elementary		
– Gardendale Separate Day School		





62	ALLEN, ROY ELEMENTARY
45	ANDERSEN, HANS CHRISTIAN ELEMENTARY
9	APOLLO ELEMENTARY
5	ASTRONAUT HIGH
14	ATLANTIS ELEMENTARY
22	AUDUBON ELEMENTARY
88	BAYSIDE HIGH
50	BREVARD PUBLIC SCHOOLS MAIN OFFICE (BPS)
38	CAMBRIDGE ELEMENTARY MAGNET
19	CAPE VIEW ELEMENTARY
18	CARROLL, LEWIS ELEMENTARY
70	CENTRAL MIDDLE
35	CHALLENGER 7 ELEMENTARY
39	CLEARLAKE EDUCATION CENTER
26	COCOA BEACH JR./SR. HIGH
37	COCOA JR./SR. HIGH
87	COLUMBIA ELEMENTARY
12	COQUINA ELEMENTARY
57	CREEL, DR. W.J. ELEMENTARY
60	CROTON ELEMENTARY
33	DELAURA MIDDLE
76	DISCOVERY ELEMENTARY
61	EAU GALIE HIGH
24	EDGEWOOD JR./SR. HIGH
96	EDUCATIONAL HORIZONS CHARTER
93	EMMA JEWEL CHARTER ACADEMY
41	ENDEAVOUR ELEMENTARY MAGNET
15	ENTERPRISE ELEMENTARY
36	FAIRGLEN ELEMENTARY
28	FREEDOM 7 ELEMENTARY
83	GEMINI ELEMENTARY
43	GOLFVIEW MAGNET ELEMENTARY
63	HARBOR CITY ELEMENTARY
81	HERITAGE HIGH
31	HOLLAND, SPENSARD L. ELEMENTARY
64	HOOVER, HERBERT MIDDLE
95	IMAGINE SCHOOLS AT WEST MELBOURNE
13	IMPERIAL ESTATES ELEMENTARY
67	INDIALANTIC ELEMENTARY
11	JACKSON, ANDREW MIDDLE
29	JEFFERSON, THOMAS MIDDLE
56	JOHNSON, L.B. MIDDLE
85	JUPITER ELEMENTARY
46	KENNEDY, JOHN F. MIDDLE
78	LOCKMAR ELEMENTARY
53	LONGLEAF ELEMENTARY
4	MADSON, JAMES MIDDLE
47	MANATEE ELEMENTARY
77	MCALUIFFE, CHRISTA ELEMENTARY
42	MCNAIR, RONALD MAGNET
71	MEADOWLANE INTERMEDIATE
68	MEADOWLANE PRIMARY
66	MELBOURNE HIGH
21	MERRITT ISLAND HIGH
23	MILA ELEMENTARY
2	MIMS ELEMENTARY
3	OAK PARK ELEMENTARY
58	OCEAN BREEZE ELEMENTARY
101	ODYSSEY CHARTER ELEMENTARY CAMPUS
102	ODYSSEY CHARTER JR./SR. 6-12 & PREPARATORY ACADEMY K-6
98	PALM BAY ACADEMY CHARTER LANGUAGE IMMERSION K-3
99	PALM BAY ACADEMY CHARTER MIDDLE 6-8
97	PALM BAY ACADEMY CHARTER TRADITIONAL K-5 & IMMERSION 4-5
82	PALM BAY ELEMENTARY
75	PALM BAY HIGH MAGNET/ADULT/COMMUNITY EDUCATION CENTER
104	GARDENDALE / NORTH/CENTRAL ALTERNATIVE LEARNING CENTER
1	PINEAPPLE COVE CLASSICAL ACADEMY
103	PINEAPPLE COVE CLASSICAL ACADEMY
105	PINEAPPLE COVE WEST MELBOURNE CLASSICAL ACADEMY
107	PINEAPPLE COVE LOCKMAR CLASSICAL ACADEMY
94	PINECREST ACADEMY SPACE COAST
80	PORT MALABAR ELEMENTARY
52	QUEST ELEMENTARY
108	RIVERSIDE CHARTER HIGH SCHOOL
10	RIVERVIEW / ACCESS PROJECT
79	RIVIERA ELEMENTARY
44	ROCKLEDGE HIGH
27	ROOSEVELT, THEODORE ELEMENTARY
100	ROYAL PALM CHARTER
59	SABAL ELEMENTARY
32	SATELLITE HIGH
40	SATURN ELEMENTARY
92	SCULPTOR CHARTER
30	SEA PARK ELEMENTARY
54	SHERWOOD ELEMENTARY
74	SOUTH AREA ADULT/COMMUNITY EDUCATION CENTER
55	SOUTH AREA ALTERNATIVE LEARNING CENTER
6	SOUTH LAKE EDUCATION CENTER
17	SOUTH LAKE ELEMENTARY
84	SOUTHWEST MIDDLE
16	SPACE COAST JR./SR. HIGH
20	STEVENSON, ROBERT LOUIS ELEMENTARY
73	STONE MAGNET MIDDLE
90	SUNRISE ELEMENTARY
51	SUNTREE ELEMENTARY
34	SURFIDE ELEMENTARY
8	TTUSVILLE HIGH
25	TROPICAL ELEMENTARY
86	TURNER SR., JOHN F. ELEMENTARY
72	UNIVERSITY PARK ELEMENTARY
48	VIERA ELEMENTARY
91	VIERA CHARTER
49	VIERA HIGH
109	VIERA MIDDLE
69	WEST MELBOURNE SCHOOL FOR SCIENCE
65	WEST SHORE JR./SR. HIGH
89	WESTSIDE ELEMENTARY
106	WILLIAMS, RALPH M. JR. ELEMENTARY
7	WHISPERING HILLS EDUCATION CENTER



# Students-in-Transition

## McKinney-Vento Act

The mission of the Students-in-Transition (SIT) program is to identify students who are homeless, remove barriers to their education, and provide information to appropriate community resources, while keeping the students fully participating in school. SIT must be enrolled immediately.

The McKinney-Vento Homeless Education Assistance Act, defines “homeless children and youths” as “individuals who lack a fixed, regular and adequate nighttime residence.” Educational issues and requirements related to homelessness are addressed in the law. The Students in Transition must have access to a free and appropriate public education, including preschool, and be given a full opportunity to meet state and local academic achievement standards.

### Definition of homeless students

- Living in emergency or transitional shelters, FEMA trailers, abandoned in hospitals
- Sharing the housing of other persons due to loss of housing or economic hardship or a similar reason; “doubled up”
- Living in cars, parks, campgrounds, public spaces, abandoned buildings, substandard housing, bus or train stations, or similar settings
- Living in hotels or motels due to economic hardship
- Migratory children who qualify as homeless because the children are living in circumstances described

### School District Services

- Ensure access to school and appropriate services
- Enroll homeless students in school immediately
- Provide counseling if needed
- Provide free lunch
- Provide school supplies if needed
- Provide after school academic support
- Provide transportation to the school of origin when requested and in the child’s best interest
- Provide information for housing

If parents/guardians are interested in these services, they should make a request at their child’s school for a Referral to be completed and sent to the district homeless liaison.

**District Homeless Student Liaison: Ivette Collado**  
**Phone: (321) 633-1000 ext. 11294**



# Exceptional Students

Exceptional Student Education (ESE) services are provided to students who may be classified as specific learning disabled, intellectually disabled, emotional/behavioral disabled, deaf or hard of hearing, visually impaired, traumatic brain injured, speech impaired, language impaired, autism spectrum disabled, other health impaired, and gifted.

Related services include educationally-relevant occupational therapy and physical therapy.

The ESE program is funded from state, federal and local allocations. Policies, programs and procedures are established in accordance with state and federal regulations and requirements.

Students may access a classroom that meets their individual needs at their neighborhood school or at a school within their feeder plan.

**For information about the variety of services available to students in Exceptional Education, visit the Exceptional Student Education section of the BPS website, or contact the ESE department at (321) 633-1000 ext. 11520.**



# English for Speakers of Other Language (ESOL)

## Identification and placement

All parents complete a Home Language Survey (HLS) during registration. If a parent indicates that another language is spoken at home, schools administer a comprehensive English language proficiency screener to determine whether that language has impacted the student’s proficiency in English. Designated as English Language Learners (ELLs), students who meet eligibility for the program are placed in appropriate grades and courses with highly qualified ESOL endorsed or board-approved teachers.

## Instructional model

The primary instructional model for Brevard is a mainstream inclusion model in which instruction is delivered through the use of ESOL strategies, supports, and accommodations. English-sheltered classes are also available at secondary schools with a large ELL population. These are English courses for ESOL students only. As mandated by the Florida Consent Decree, classroom teachers provide understandable and differentiated instruction in a manner appropriate to an ELL’s level of English proficiency. The language proficiency of an ELL is taken into consideration during lesson planning, instruction, assessment, and grading.

## Supplemental assistance

Through district funding and Title III, the following supports and resources are available for ELLs throughout the district:

- ESOL-Itinerant teachers for supplemental academic support and monitoring in non-staffed schools
- A Bilingual Assistant for any school with an enrollment of 15 ELLs of the same home language
- An ESOL teacher for any school with an enrollment of 50 ELL students
- An ESOL Parent Liaison for parent engagement and community outreach programs
- Quality professional development for instructional staff and ESOL contacts
- Supplemental online programs for language acquisition
- Supplemental classroom materials
- ESOL tutoring
- Summer enrichment programs

## Progress monitoring

School principals designate an ESOL contact at their respective sites to serve as a district and school liaison to ESOL parents. The ESOL contact ensures school compliance. Through the ELL Committee,

the ESOL contact monitors student progress, conducts regular periodical reviews, coordinates classroom support and ensures parent participation in academic decisions. ESOL students are included in all of Brevard’s assessments using approved testing accommodations. In addition, all ELLs participate in the spring administration of Access for ELLs 2.0 for English Language Proficiency monitoring.

## Tips for parents

- We encourage ESOL parents to advocate for their students by:**
- Knowing their rights
  - Requesting information in their home language whenever feasible
  - Identifying and communicating with the school’s ESOL contact as needed
  - Having access to online tools for continuous monitoring and instant translation
  - Participating actively in the various school/district procedures and events
  - Verifying their student participation to the available supplemental resources
  - Talking to their ELL students regularly about school, their classroom, teachers, and friends

## Additional resources

- BPS – ESOL Portal**  
<https://brevardpublicschoolsfl.sites.thrillshare.com/page/esol-program-title-iii>
- Colorin Colorado**  
<http://www.colorincolorado.org/>
- Elementary Programs**  
<https://www.brevardschools.org/page/elementaryprograms-early-childhood>
- ESE (Exceptional Student Education)**  
<https://www.brevardschools.org/page/exceptionalstudent-education>
- Open Enrollment**  
<https://www.brevardschools.org/page/school-choice>
- FDLRS (Florida Diagnostic & Learning Resource System)**  
<https://www.fdlrseast.org/>
- Curriculum and Instruction**  
<https://www.brevardschools.org/page/curriculuminstruction>
- Title 1**  
<https://www.brevardschools.org/page/title-i>



# Voluntary Prekindergarten Program

Brevard Public Schools, in collaboration with the Early Learning Coalition of Brevard, offers a Voluntary Prekindergarten Program (VPK) at selected schools with limited enrollment. VPK is a FREE early learning program to prepare four-year-olds for kindergarten and build the foundation for school success. Students must be four years old on or before September 1 and reside in Florida to qualify for the program. Brevard Public Schools with VPK Programs are listed below. Enrollment for VPK is a two-step process.

### STEP 1 - Parents obtain a VPK Certificate of Eligibility.

In order to obtain a VPK Certificate of Eligibility, parents must visit the Early Learning Coalition website at <https://www.elcbrevard.org/> to complete the online enrollment process. Please contact the Early Learning Coalition at (321) 637-1800 for additional information.

### STEP 2 - School Registration

VPK enrollment is held at the school sites listed below. Please note that enrollment does not guarantee a VPK slot. There are attendance boundaries and limited space available. Some schools may require a lottery.

### StepFOURward VPK

StepFOURward VPK is a state and federal Title I funded program for students who live in the attendance area of the school.

- Apollo Elementary
- Columbia Elementary
- Dr. W. J. Creel Elementary
- Croton Elementary
- Fairglen Elementary
- Golfview Magnet Elementary School
- Harbor City Elementary
- McAuliffe Elementary
- MILA Elementary
- Palm Bay Elementary
- Pinewood Elementary
- Riviera Elementary
- Sabal Elementary
- Turner Elementary

### Blended VPK

Blended VPK is open to all attendance areas for basic education and exceptional education students working together.

- Atlantis Elementary
- Audubon Elementary
- Columbia Elementary
- Dr. W. J. Creel Elementary
- Lockmar Elementary
- Longleaf Elementary
- McAuliffe Elementary
- Meadowlane Primary
- MILA Elementary
- Oak Park Elementary
- Riviera Elementary
- Saturn Elementary
- Sea Park Elementary
- Sunrise Elementary
- Turner Elementary

### Westside Elementary Williams Elementary Early Childhood Education VPK

Selected high schools offer VPK to students in all attendance areas on a modified schedule.

- Merritt Island High School
- Palm Bay High School
- Satellite High School
- Viera High School



**For more Information:**  
Office of Early Childhood,  
(321) 633-1000  
ext. 11319  
[www.brevardschools.org](http://www.brevardschools.org)



# Head Start Program

Brevard Public Schools offers the Head Start program to 624 eligible children and families at 12 elementary schools:

North Area	Central Area	South Area
Coquina Elementary	Cambridge Elementary	Discovery Elementary
Enterprise Elementary	Endeavour Elementary	Jupiter Elementary
Mims Elementary	Saturn Elementary	Palm Bay Elementary
	Sherwood Elementary	Port Malabar Elementary
		University Park Elementary

In addition to a free full-day preschool program, Head Start provides comprehensive services to enrolled children and families, which include, health, nutrition, social, and other services based on individual family needs. Head Start emphasizes the role of parents as their child's first and most important teacher.

### Step 1: Eligibility

Children must be 3 or 4 years old on or before September 1 and meet the federal income poverty guidelines. Families must complete a Head

Start Pre-Application, available at <https://www.brevardschools.org/o/bps/page/head-start>. The completed Pre-Application is submitted electronically to the Head Start administrative office, and the family will be contacted for an eligibility meeting with a Family Advocate. An information page is available with the application outlining documents your family will need to bring to the eligibility meeting.

### Step 2: Selection

Eligibility does not guarantee selection for the program. Children are selected for the program from the waitlist maintained at the Head Start administrative office. Once a child has been selected for the program, the family will be asked to complete school enrollment. To ensure enrollment is completed within the designated time frame, a family advocate is available to assist. Families who do not complete enrollment within the designated time frame will be returned to the waiting list.

### Step 3: School Registration

Families selected for the Head Start program must bring all required school enrollment documents to the school. Children enrolling for Head Start VPK must bring the VPK Certificate of Eligibility along with required school enrollment documents. The VPK Certificate is obtained online through the [Early Learning Collation of Brevard](http://www.brevardschools.org).

### Contact

Head Start Administrative Office  
Clearlake Education Center  
1225 Clearlake Road, Cocoa, FL 32922  
(321) 617-7786, ext. 31383  
[www.brevardschools.org/HeadStart](http://www.brevardschools.org/HeadStart)





# Welcome to Brevard Before & After School (BAS)!

Brevard Before & After School (BAS) Programs operate both in the morning and afternoon in most of our elementary schools. Our 21st Century Community Learning Centers (21st CCLC) currently operate in select elementary schools during after school hours only. You can find the following services in most of our programs:

- Safe & healthy environment beyond the school day
- Afternoon snack
- Socialization, free play, organized games
- Arts, STEM, and wellness
- Homework time
- Academic assistance with our 21st CCLC programs
- BAS only: Affordable after school enrichment classes- Karate, Chess, Cheer, Zoo, & MORE!

Follow, Like, & Share!  
On our website – [brevardafterschool.com](http://brevardafterschool.com)  
On Facebook – [www.facebook.com/BrevardAFterSchool](http://www.facebook.com/BrevardAFterSchool)



Contact us for more information at 321-633-3660 x31469 or by email at [connectafterschool@brevardschools.org](mailto:connectafterschool@brevardschools.org)



NEED HELP WITH CHILD CARE?

SCAN HERE



EARLY LEARNING COALITION OF BREVARD COUNTY

(321) 637-1800 ext. 8573 | [elcbrevard.org](http://elcbrevard.org)



# Elementary Programs

The goal of Brevard Public Schools is to educate students in child-centered environments that promote and develop literacy and understanding of mathematics, social studies, language arts, and scientific concepts. In these environments, students are encouraged to be active participants who explore, manipulate objects, question, take risks, work cooperatively, think, feel, trust, and evaluate their own thinking and learning. Teachers facilitate learning, enabling students to become responsible for their own learning and behaviors.

## Grade Level Standards

The Benchmarks for Excellent Student Thinking (B.E.S.T.) standards were developed for English/language arts and mathematics. The Next Generation Sunshine State Standards are established for science. The Florida Social Studies Next Generation Sunshine State Standards have been an established area for social studies. These grade-level standards list key benchmarks for student progress.

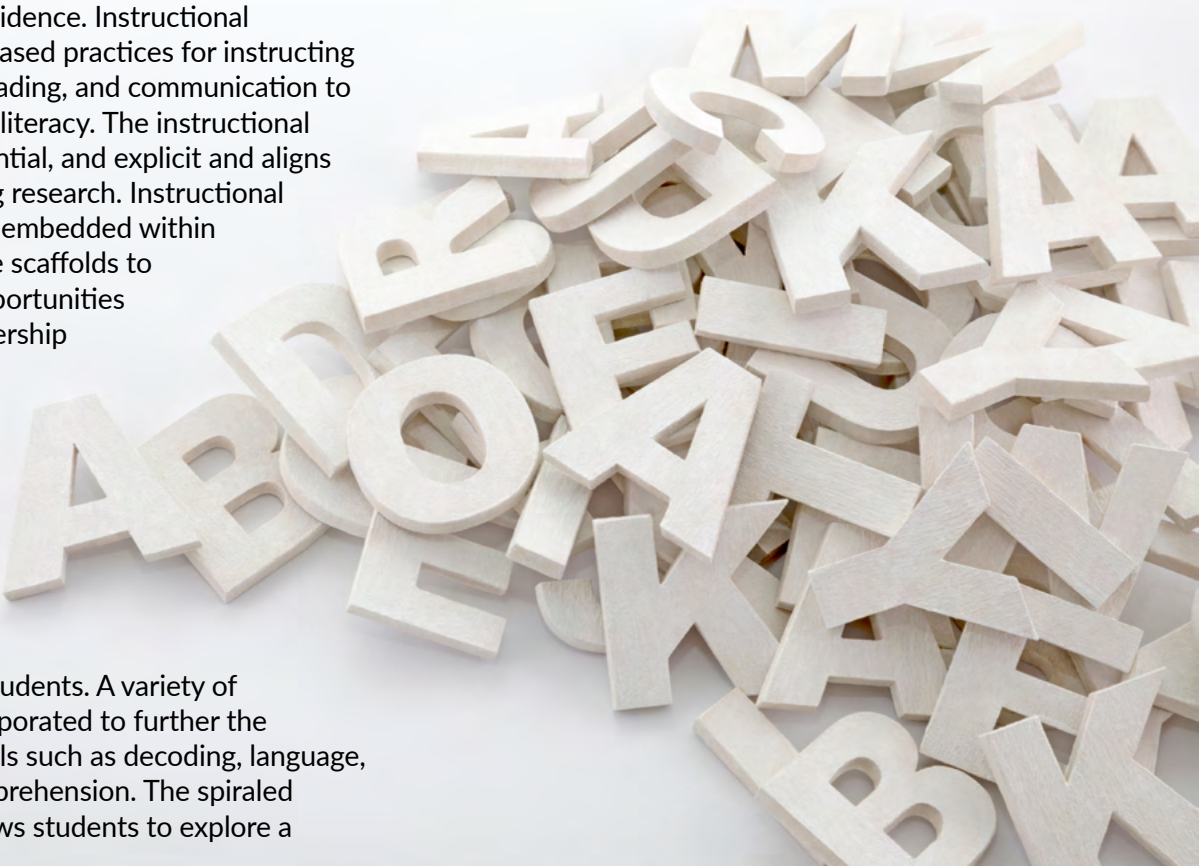
## English Language Arts

Brevard Public Schools' state-adopted instructional materials for English Language Arts are **Benchmark Advance** by Benchmark Education for K-5 and **myPerspectives** by Savvas Learning for grade 6. Instructional materials are aligned to Florida's B.E.S.T. Standards for ELA. The goal of **ELA instruction** is to create readers, thinkers, and writers who are able to confidently convey a message supported with evidence. Instructional materials utilize evidence-based practices for instructing foundations, vocabulary, reading, and communication to develop and refine student literacy. The instructional design is systematic, sequential, and explicit and aligns with the Science of Reading research. Instructional routines and structures are embedded within the curricula. These provide scaffolds to support all learners and opportunities to strengthen student ownership of learning. The operating systems maximize instructional time. Student books provide quality authentic texts and balance literature and informational reading opportunities for students. A variety of text types (media) are incorporated to further the development of literacy skills such as decoding, language, fluency, grammar, and comprehension. The spiraled nature of the materials allows students to explore a

standard or concept multiple times. Students revisit a passage several times for a variety of purposes including developing automaticity, deepening comprehension, and building content/topic knowledge.

**Writing instruction** is connected to comprehension lessons, so students experience many opportunities to deepen their understanding of topics and concepts. Explicit writing lessons are provided to strengthen students' abilities to produce narrative, informative, and opinion pieces which have clear focus, purpose, and organizational structures. The standards-aligned curricula follow a progression that develop writers who use the craft to learn, think, and communicate across the disciplines, stressing the linkage between writing and reading. Lessons follow a logical sequence to build student confidence and skills. Grammar is taught in context and embedded within daily reading and writing instruction. Vocabulary instruction is intentional in design.

**Vocabulary instruction** is intentional in design with spiraling support for vocabulary development. Savvas **myPerspectives** includes the study of Greek and Latin word parts. The Phonics and Word Study (**Spelling**) components of the Florida Benchmark Advance program provide the foundations needed for reading, word study, and phonics (**language patterns**) and will be used as the district's adopted method for instructing spelling.





Both programs include components that provide the foundations needed for reading and using words that reflect the vocabulary, word study (**etymology, morphology, and syllable types**), and phonics components of the grade-level texts. General academic and domain-specific vocabulary lessons are aligned to the language skills and concept/topic progression.

Brevard Public Schools utilizes the **D'Nealian Style of Handwriting** for manuscript and cursive. Handwriting instruction includes explicit instruction of letter formation, systematic guided practice, and opportunities for students to apply skills independently within the context of their daily work.

### Mathematics

Brevard Public Schools' state-adopted instructional materials for Mathematics are **McGraw Hill's Florida Reveal Math** for grades K-5 and **EdGems' Florida B.E.S.T. EdGems Math** for grade 6. Instructional materials are aligned to Florida's B.E.S.T. Standards for Math. As embedded within the B.E.S.T. benchmarks for Math, the intent of Math instruction is to ensure that students build a strong sense of mathematical identity and agency to:

1. Analyze and persevere in mathematical tasks
2. Build conceptual understanding to be flexible, efficient and accurate thinkers and problem solvers
3. Construct viable mathematical arguments and engage in mathematical discourse
4. Connect mathematical concepts to everyday experiences

The curricula provide opportunities for all students to have multiple entry points into problem solving and access to equitable learning. Additionally, lessons are consistently focused on complex content that appropriately challenges students to meet the grade level standards and benchmarks. The lessons incorporate sense-making activities that build students' proficiency with problem solving. By focusing systematically on sense-making, students develop and refine not just their observation and questioning skills, but the foundation for mathematical modeling. The scope and sequence reflects the learning progressions outlined within Florida's B.E.S.T. Standards. It emphasizes developing a deep understanding of the grade level-benchmark expectations and fluency with skills.

### Science

Brevard Public Schools' science goal is to provide students with a well-balanced K-6 curriculum, which is aligned with Florida's Next Generation Sunshine State Standards. To develop science literacy in our students, they are actively involved in inquiry-based investigations that teach the

content as well as the essential process skills. The district adopted instructional materials, **STEMscopes Florida 2.0** (K-5) and **McGraw Hill Grade 6 Florida Comprehensive**, including multiple hands-on activities that provide science content and real-world connections.

### Social Studies

Brevard Public Schools' social studies core curriculum focuses on Florida's Next Generation Sunshine State Standards while engaging students in lessons to develop the ability to make informed and reasoned decisions. Activities provide pathways for engagement, discussion, and historical thinking while incorporating reading, writing, and mathematical integration of subject matter. The district-adopted instructional materials, **McGraw-Hill** (K-5), and **TCI History Alive! The Ancient World** (Gr. 6), supports standards-aligned curriculum by offering tools, information, and resources to encourage students to think critically and make conceptual connections to the real world.

### Music

The goal of the Brevard Public Schools' music program is to provide a life-long love of music. This is accomplished by offering a cohesive, sequential program based on an appreciation for all aspects of music with an emphasis on performing music and developing music literacy. The program serves students in grades kindergarten through sixth. The Brevard Music Curriculum guide is based on the Florida State Standards. Quaver provides the district's instructional resources.



### Health & Physical Education

The goal of elementary physical education in Brevard Public Schools is to provide students with a standard-based, balanced, sequential, and progressive educational activity program. The program, aimed at kindergarten through sixth grade students, includes basic movement concepts and skills that are age and developmentally appropriate. This, in turn, leads to the development of motor skills, knowledge, and values, which are needed to establish and maintain a healthy and physically active lifestyle. Aligned with Florida State Standards for Physical Education, the Elementary Physical Education Curriculum Guide is available to all teachers as the basis for their curriculum. The Presidential Youth Fitness Program (PYFP) helps schools achieve excellence in

physical education through quality fitness education and assessment practice. Fitnessgram, part of the PYFP, is the physical fitness assessment program used by all Brevard schools. Individual fitness reports should be available to all students and parents.

The goal of the elementary health program is to develop a health consciousness in all students utilizing a standards-based, developmentally appropriate curriculum aimed at enriching their wellbeing. Mandated by the Florida statute, Brevard Public Schools developed a comprehensive, age and developmentally appropriate Health Education curriculum. The K-6 Healthy Body Systems Curriculum Guide is available to teachers with lessons and activities that are aligned to standards and easily integrated into aligned content courses.

F.S. State Board Rule 6A-1.094124 F.A.C. (Resiliency Education: Civic and Character Education and Life Skills Education) establishes a minimum of 5 hours of required instruction in grades 6-12 related to civic and character education and life skills education using the health education standards adopted in rule 6A-1.09401 F.A.C., Student Performance Standards. The rule was adopted by the State Board of Education on 11/22/2022 and went into effect during the 2023-24 school year. In addition to Civic and Character Education, these state board rules require students to receive instruction related to the recognition of signs and symptoms of mental health concerns.

**Recess** - F.S. 1003.455(3), each district school board shall provide 150 minutes of physical education each week for students in kindergarten through grade 5 and for students in grade 6 who are enrolled in a school that contains one or more elementary grades so that on any day during which physical education is conducted, there are at least 30 consecutive minutes per day.



### Art

The goal of the Brevard County Public Schools Visual Art program is to provide high quality instruction and assessment in elementary art that allows students to experience a rigorous, comprehensive, and authentic visual art education. Learning in the arts provides students with the opportunity to develop essential skills including problem solving, personal expression, collaboration, creativity, critical thinking, and visual communication skills. The art program is correlated with the Florida State Standards for K-12 Art Education. The district adopted series are **Davis Publications: Explorations in Art** (k-5) and **Exploring Visual Design** (Grade 6).

### Gifted

The goal of the Brevard Public Schools Gifted Program is to provide appropriate levels of enrichment to meet the varying needs of students. This program focuses on the academic needs of students identified as needing gifted services while fostering a culture of resilience. District and school-based resources are utilized to support the instructional needs for each grade level.

### Controlled Open Enrollment

BPS offers parents an opportunity to elect which academic environment or program is best suited for their child through "Open Enrollment" processes. This is a K-12 option for parents to apply to attend another public school other than their zoned school of attendance. Parents who are interested in Open Enrollment, Educational Location Option (ELO) or Educational Program Opportunity (EPO), must complete an online application. Timelines, FAQ's, additional information, online application process (Family Dashboard) can be found at [www.brevardschools.org](http://www.brevardschools.org); under the Parent/Student Portal; click Open Enrollment. If you have specific questions, feel free to call Curriculum and Instruction – Open Enrollment and Charter Schools office at (321) 633-1000 ext. 11395.



It's not too early  
to get your student  
ready for the  
next step.



Let **EFSC** help!

**START THAT COLLEGE CAREER EARLY  
WITH ANY OF THESE GREAT PROGRAMS**

Dual Enrollment • Early Admission • Early College



Prepare for college by subscribing to

**Splash OF THE TITANS**

[efscsplash.com](http://efscsplash.com)

Enjoy access to information about EFSC, student life, and take advantage of monthly articles and resources available to you as you prepare for college



Find out more by emailing [recruiting@easternflorida.edu](mailto:recruiting@easternflorida.edu) or call 321-433-7614

Eastern Florida State College is committed to equal access/equal opportunity in its programs, activities, and employment. For additional information, visit Eastern Florida State College: [easternflorida.edu/go/equity](http://easternflorida.edu/go/equity)

MI62377

# High School Graduation Programs

This guide is designed to help parents of middle and high school students plan and prepare for postsecondary success. All of Brevard Public Schools' graduation paths include opportunities to take rigorous academic courses designed to prepare students for their future academic and career choices. All students, regardless of graduation program, must earn at least a 2.0 grade point average on a 4.0 scale, obtain a passing score on the FAST ELA assessment (or obtain a concordant score with SAT, ACT or CLT) and pass the B.E.S.T. Algebra EOC (or obtain a comparative score with PSAT/MNSQT, SAT, ACT, CLT or the BEST Geometry EOC

For more information about other graduation options for students with disabilities, contact your child's school counselor or exceptional student education teacher, or visit the [Exceptional Student Education](#) section of the BPS website. Florida students entering their first year of high school in the 2024- 25 school year may choose from one of four options to earn a standard diploma. These options are as follows:

- a four-year, 26-credit graduation option (30-credits for block schools)
- an International Baccalaureate (IB) curriculum
- an Advanced International Certificate of Education (AICE) curriculum
- an Academically Challenging Curriculum to Enhance Learning (ACCEL) 18-credit graduation option
- CTE Pathway

## 26-credit option (30 credits for block schools)

This program takes the traditional four years to complete high school and requires students to take at least 26 credits in core content areas. Although earning world language credit is not required, it is recommended for Florida college preparation, and 2 credits of a world language is required for admission to Florida's state universities and for the academic Bright Futures Scholarships. Many competitive schools (in state and out of state) require 3-4 credits of World Languages. A student may have the option of early graduation, if the student meets graduation requirements in less than eight semesters or the equivalent.

## International Baccalaureate (IB) Diploma Programme

The IB Diploma Programme is a rigorous, pre-university course of study leading to internationally standardized tests. The program's comprehensive, two-year

curriculum allows its graduates to fulfill requirements of many different nations' education systems. Students completing IB courses and exams from six subject groups are eligible for college credit. The award of credit is based on scores achieved on IB exams. Students can earn up to 30 postsecondary semester credits by participating in this program at the high school level. IB students in Florida do not have to pay to take the exams. For information [www.ibo.org](http://www.ibo.org).

## Advanced International Certificate of Education (AICE) Program

The AICE Program is an international curriculum and examination program modeled on the British pre-college curriculum. To be considered for an AICE diploma, a candidate must earn the equivalent of six credits by passing a combination of examinations at either the full (one credit) Advanced Subsidiary Level (AS) or double (two credits) International Advanced Level (A), with at least one course coming from each of the three curriculum areas. Florida's colleges and universities provide college credit for successfully passing the exams. AICE students in Florida do not have to pay to take the exams. For information, visit the [AICE Program](#) website.

## Accelerated 18-credit graduation option

This graduation option is designed for students who are clear about their future goals and are ready to pursue them beyond high school. To select the ACCEL 18-credit graduation option, students and their parents must meet with designated school personnel to receive an explanation of the requirements, advantages, and disadvantages of this option. Students must also receive the written consent of their parents.

## Career and Technical Education Graduation Pathway Option

This is an alternative pathway to earning a standard high school diploma awarded through the Career and Technical Education (CTE) pathway. This pathway option requires the student to successfully complete at least 18 credits, complete two credits in career and technical education that results in program completion and an industry certification, and complete one and one-half credits in electives or work-based learning programs.

**For more information about high school graduation options, contact your child's counselor.**



# Acceleration Programs and Advanced Coursework

## High School Graduation Programs Acceleration Programs and Advanced Coursework

Studies show that students who complete a solid academic program in high school, including advanced courses, are more likely to be successful in college. Students in all graduation programs are encouraged to take advantage of advanced course offerings and acceleration programs. These programs are available to all qualified students. For information, contact your child's school counselor.

### Dual enrollment and early admission

These programs allow eligible high school students to enroll in postsecondary courses. Students simultaneously earn credit toward high school graduation and a college degree or career certificate. BPS currently articulates with Eastern Florida State College, Florida Institute of Technology, and Embry Riddle Aeronautical University. Students are permitted to take dual enrollment courses on a part-time basis during school hours, after school, or during the summer term (if available). Dual enrollment students attending EFSC do not pay registration, tuition, or laboratory fees. In addition, textbooks for dual enrollment are provided to students by BPS. Dual enrollment courses will be weighted the same as courses taught through other acceleration mechanisms. Students should be aware that grades received through dual enrollment become part of the permanent postsecondary record. State universities will not admit a student who has less than a 2.0 grade point average on a 4.0 scale.

### Advanced Placement (AP) Program

The College Board's AP Program is a nationwide program consisting of more than 30 college-level courses and exams offered at participating high schools. Subjects range from art to statistics. Students who earn a qualifying grade of three or above on an AP exam can earn college credit depending on the college or university. Students in Florida's public secondary schools enrolled in AP courses do not have to pay to take the exams. For information, visit the [AP Program website](#).

### Brevard Virtual School (BVS)

BVS offers high-quality, online high school curricula, including AP courses and Career & Technical Education courses. The BVS Program can be a resource for students with limited access to AP offerings. For information, visit: <http://brevardschools.org/BrevardVirtual>.

## Brevard Adult Education

Adult Education strives to provide access to high-quality courses with a wide variety of options for adult learners 16 and up in our community. We're now offering face-to-face and online classes. Classes start at \$31.50 per semester, offered at three conveniently located centers with day and evening classes to best fit your schedule. The program offers:

- Adult High School Diploma Classes
- GED Diploma Refresher Classes
- English (ESOL) Classes
- Vocational Certifications
- Lifelong Learning Classes

For more information, visit [www.brevardadulthood.com](http://www.brevardadulthood.com) or call 321-633-3660

### College-Level Examination Program (CLEP)

Students with a strong content background in a subject area can earn high school and College credit through the College-Level Examination Program (CLEP) administered by the college they attend. Candidates for the CLEP include students who have completed an AP course but did not earn a qualifying score on the AP exam. Other students who have taken several high school courses in one particular subject area may wish to take a CLEP exam. For more information on CLEP testing sites and dates, contact the admissions or registrar's office at the postsecondary institution in your area.



# Brevard Public Schools High School Graduation Requirements

26-Credit Graduation Requirements (30-Credits Block Schools)	
Subject Area	
English Language Arts (ELA)	<ul style="list-style-type: none"><li>▪ 4.0 credits in English Language Arts 1, 2, 3, 4<ul style="list-style-type: none"><li>– English Language Arts Honors, AP, AICE, IB, and dual enrollment courses may satisfy this requirement</li></ul></li><li>▪ Must pass the FAST ELA assessment (or earn a concordant score) in order to graduate with a Standard High School Diploma</li></ul>
Mathematics	<ul style="list-style-type: none"><li>▪ 4.0 credits, one must be Algebra 1 and one must be Geometry</li><li>▪ For students who begin high school math credits in middle school, it is strongly recommended that Mathematics be taken all years of high school to ensure that students are meeting readiness expectations for college and career. Many colleges will expect continuous enrollment of Mathematics courses while the student is in high school.</li><li>▪ Must pass Algebra 1 EOC (or earn a comparative score) in order to graduate with a Standard High School Diploma</li><li>▪ Industry certification that leads to college credit may substitute for up to 2.0 mathematics credits (except for Algebra 1 and Geometry)</li><li>▪ Several Computer Education courses count as math courses (except for Algebra 1 and Geometry). See your counselor for more information.</li></ul>
Science	<ul style="list-style-type: none"><li>▪ 3.0 credits in science must include either:<ul style="list-style-type: none"><li>– 1.0 credit each in Biology, Chemistry, and Physics (strongly recommended), OR</li><li>– 1.0 credit each in Physical Science, Biology, and Equally Rigorous Science course</li></ul></li><li>▪ Industry certification that leads to college credit may substitute for up to 1.0 science credit (except for Biology).</li><li>▪ Several IB Computer Education courses count as EQ science courses. See your counselor for more information</li></ul>
Students must complete 4.0 Science credits OR 4.0 Social Studies credits	
Social Studies	<ul style="list-style-type: none"><li>▪ 3.0 credits in social studies must include:<ul style="list-style-type: none"><li>– 1.0 credit in World History</li><li>– 1.0 credit in U.S. History</li><li>– 0.5 credit in U.S. Government</li><li>– 0.5 credit in Economics</li></ul></li></ul>
Fine/Performing/Career and Technical Education	<ul style="list-style-type: none"><li>▪ 1.0 credit in fine or performing arts, speech and debate, or career and technical education. A practical arts course that incorporates artistic content and techniques of creativity, interpretation, and imagination satisfies this requirement. Eligible practical arts courses are identified in the Florida Course Code Directory.</li></ul>
Physical Education	<ul style="list-style-type: none"><li>▪ 1.0 credit in Health Opportunities for Physical Education (HOPE), which includes Compression Only CPR</li></ul>
Personal Financial Literacy	<ul style="list-style-type: none"><li>▪ 0.5 credit in Personal Financial Literacy (beginning with the graduating class of 2027)</li></ul>
Career Research and Decision Making	<ul style="list-style-type: none"><li>▪ 0.5 credit (the course also satisfies the requirements of Statute 1003.42(2)(s) for Character Development Curriculum)</li></ul>
Electives	<ul style="list-style-type: none"><li>▪ 8.5 credits/12.5 credits block schools (beginning with graduating class of 2027 - 8.0 credits/12.0 credits block schools)</li></ul>
Grade Point Average (GPA)	<ul style="list-style-type: none"><li>▪ Cumulative GPA of 2.0 on a 4.0 scale</li></ul>
Rigorous Course Requirements	<p>Students will be required to complete a program of study in at least one of the following areas:</p> <ul style="list-style-type: none"><li>▪ 3.0 credits in any combination of approved Dual Enrollment (DE), Advanced Placement (AP), International Baccalaureate (IB), Advanced International Certificate of Education (AICE), or approved Honors courses, OR</li><li>▪ 3.0 or more credits in a Career &amp; Technical Education Program of Study which will be used to complete a sequential career and technical education program resulting in a credential endorsed by a national, state, or local industry, OR</li><li>▪ 4.0 or more credits in sequential Performing Fine Arts courses that lead to College and/or Career Readiness</li></ul>
World Languages	<ul style="list-style-type: none"><li>▪ 2.0 sequential credits in the same language are required for admission into Florida state universities and for Bright Futures eligibility. Many competitive schools (in state and out-of-state) require 3-4 credits of World Language.</li></ul>

### NOTES:

- The following courses include EOC assessments which count as 30% of the Final Course Grade: Algebra 1, Geometry, Biology, and U.S. History.
- Based on individual student needs, the 4th additional science credit may be chosen from any EQ Science or Non-EQ Science course
- Participation in a FHSAA interscholastic sport at the junior varsity or varsity level for two full seasons shall satisfy the one-credit requirement in HOPE.
- Completion of two years in a Reserved Officer Training Corps (R.O.T.C.) class shall satisfy the 1.0 credit requirement in HOPE AND the 1.0 credit requirement in Fine/Performing/Career and Technical Education.
- The number of credits required for graduation for students who enter a block schedule school from a non-block school will be decreased by 0.5 credits for each semester the student was in a non-block school.
- The Credit Acceleration Program (CAP) - allows a student to earn high school credit if the student passes an advanced placement (AP) examination, a College Level Examination Program (CLEP), or a statewide course assessment without enrollment in the course.



# WHAT STUDENTS AND PARENTS/LEGAL GUARDIANS NEED TO KNOW

## What are the Different Diploma Designations?

### Scholar Diploma Designation

In addition to meeting the Standard High School Diploma requirements:

- Pass Geometry EOC
- Earn one (1) credit in Algebra 2 or an equally rigorous mathematics course
- Earn one (1) credit in Statistics or an equally rigorous mathematics course
- Pass the Biology 1 EOC
- Earn one (1) credit in Chemistry or Physics
- Earn one (1) credit in a course equally rigorous to Chemistry or Physics
- Pass the U.S. History EOC
- Earn two (2) credits in the same World Language
- Earn at least one (1) credit in AP, IB, AICE, or a dual enrollment course

A student is exempt from taking the Biology 1 or U.S. History EOC if the student is enrolled in an AP, IB, or AICE Biology 1 or U.S. History course, and the student earns the minimum score to earn college credit on the respective AP, IB, or AICE assessment.

### Industry Scholar Diploma Designation

In addition to meeting the Standard High School Diploma requirements:

- Attain one (1) or more industry certifications from the list established (per s. 1003.492, F.S.).

## Florida Seal of Biliteracy Program

The Florida Seal of Biliteracy Program is established to recognize a high school graduate who has attained a high level of competency in listening, speaking, reading and writing in one (1) or more languages in addition to English. Criteria for the Gold and Silver Seal of Biliteracy are as follows:

\*Silver Seal of Biliteracy: Student must earn a 3 on the FSA/FAST ELA (or concordant score) AND (1) Earn 4 high school credits in one World Language with a cumulative 3.0 GPA in the World Language classes OR (2) Receive a qualifying score on a World Language test.

\*Gold Seal of Biliteracy: Student must earn a 4 or higher on the FSA/FAST ELA AND (1) Earn 4 high school credits in one World Language with a cumulative 3.0 GPA in the World Language classes OR (2) Receive a qualifying score on a World Language test.

## What are the Public Postsecondary Options?

### STATE UNIVERSITY SYSTEM

Admission into Florida's public universities is competitive. Prospective students should complete a rigorous curriculum in high school, and apply to more than one (1) university to increase their chance for acceptance. To qualify to enter one (1) of Florida's public universities, a first-time-in-college student must meet the following minimum requirements:

- High school graduation with a standard diploma
- Admission test scores
- Sixteen (16) credits of approved college preparatory academic courses
  - Four (4) English
  - Four (4) Mathematics (Algebra I level and above)
  - Three (3) Science
  - Three (3) Social Science
  - Two (2) World Language (sequential, in the same language)
  - Two (2) approved electives

<http://www.flbog.edu/forstudents/planning>

### THE FLORIDA COLLEGE SYSTEM

The twenty-eight (28) state colleges offer career-related certificates and two (2) year associate degrees that prepare students to transfer to a bachelor's degree program or to enter jobs requiring specific skills. Many also offer baccalaureate degrees in high-demand fields. Florida College System institutions have an open door policy. This means that students who have earned a standard high school diploma, have earned a high school equivalency diploma, or have demonstrated success in postsecondary coursework will be admitted to an associate degree program.

<http://www.fldoe.org/schools/higher-ed/fl-college-system/index.stml>

### CAREER AND TECHNICAL CENTERS

Florida also offers students 49 accredited career and technical centers throughout the state, which provide the education and certification necessary to work in a particular career or technical field. Programs are flexible for students and provide industry-specific education and training for a wide variety of occupations.

<https://gettherefl.com/colleges/>

## WHAT STUDENTS AND PARENTS/LEGAL GUARDIANS NEED TO KNOW CONT.

## What are the Graduation Requirements for Students With Disabilities?

- Deferring receipt of a standard diploma is a process facilitated by an individual education plan (IEP) team that permits eligible students with disabilities an opportunity to continue FAPE (up through age 21) once students meet graduation requirements for a standard diploma. Per section 1003.4282(11)(c), Florida Statutes (F.S.), there are several requirements which must be met to defer a diploma.
- Students with significant cognitive disabilities may earn credits via access courses and be assessed via an alternate assessment
- Students who choose the academic and employment option must earn at least 0.5 credit via paid employment

Please contact your school's Guidance Department or the Office of ESE Program Support at (321) 633-1000 ext. 11520 for more information.

## Where is Information on Financial Aid Located?

The Office of Student Financial Assistance State Programs administers a variety of postsecondary educational state-funded grants and scholarships. To learn more, visit: <http://www.floridastudentfinancialaid.org/>.

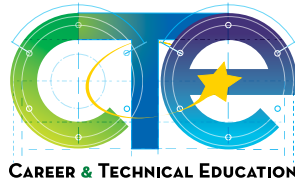
## Where is Information on the Bright Futures Scholarships Located?

The Florida Bright Futures Scholarship Program rewards students for their academic achievements during high school by providing funding to attend a postsecondary institution in Florida. For more information, visit: <http://www.floridastudentfinancialaid.org/SSFAD/bf/>.





# Career and Technical Education



Today's rigorous and relevant Career and Technical Education (CTE) program prepares students for a wide range of high-skill, high-wage, and high-demand careers as well as further educational opportunities. CTE is offered in elementary schools, middle schools, high schools, and at the postsecondary level through dual enrollment. CTE is at the forefront of preparing students to be "college and career ready" by equipping students with core academic skills and the ability to apply those skills to concrete

situations. Students also learn employability skills such as critical thinking and responsibility, in addition to job-specific, technical skills. Each CTE program offers students the opportunity to earn industry-recognized credentials and certifications, which are recognized and valued by business and industry partners. Brevard's goal is that every student will graduate from high school prepared to enter and be successful in the workplace, in further career education, and/or in postsecondary degree opportunities.

## CTE Programs of Study

A/C Refrigeration & Heating Technology  
Advanced Manufacturing Technology  
Applied Cybersecurity  
Applied Engineering Technology  
Applied Robotics  
Aquaculture  
Architectural Drafting  
Automotive Collision Technology  
Automotive Maintenance & Light Repair  
Aviation Assembly & Fabrication  
Building Construction Technologies  
Business Management & Analysis  
Carpentry  
Cloud Computing & Virtualization  
Criminal Justice Operations  
Culinary Arts  
Dental Aide  
Digital Design  
Digital Media/Multimedia Design  
Digital Video Technology  
Early Childhood Education  
Emergency Medical Responder

Environmental Water & Reclamation Technology  
Exercise Science  
Finance  
Game/Simulation/Animation/Programming  
Hospitality and Tourism Management  
International Business  
Introduction to Firefighting  
Journalism & Multimedia  
Junior Achievement Hope (Entrepreneurship)  
Machining Technology  
Maritime Technology  
Marketing, Management, & Entrepreneurial Principles  
Medical Administrative Specialist  
Nursing Assistant  
Outbound Marine Service Technology  
Principles of Teaching  
Public Safety Telecommunication/911  
Technical Design  
Television Production Technology  
Web Application Development & Programming  
Welding Technology Fundamentals

**Lack of English language skills will not be a barrier to admission and participation. The district may assess each student's ability to benefit from specific programs through placement tests and counseling, and if necessary, will provide services or referrals to better prepare students for successful participation.**

For more information regarding Career & Technical Education visit our website at <https://f102201431.schoolwires.net/Domain/1173> or contact the Office of Career & Technical Education at: (321) 633- 1000 ext. 11380.

## Join Team BPS!

### Teachers

- Starting salary of \$50,450
- Six paid holidays, weeks of Thanksgiving and spring break off, two weeks of winter break, and summers off
- Every new teacher is provided a trained mentor
- Robust offerings of professional development courses

### Do you have a bachelor's degree? If so, you can become a teacher in Florida!

- Multiple Pathways for those individuals who hold a bachelor's degree
- Opportunity to earn a district-level certification for certain Career and Technical Education positions
- Options for military veterans to earn a teaching certificate who have not yet earned a bachelor's degree

### Instructional Assistants

- Two pathways: AA degree or High School diploma and ParaPro Exam
- Tuition assistance for earning a bachelor's degree to become a teacher
- Developed IA to teacher pipeline

### Substitute Teachers

- Set your own schedule and work in a location that is convenient for you
- Call 321.633.1000, ext 11205

### Bus Drivers

- No experience necessary - CDL License provided at no cost
- Paid training
- Work in an area that is convenient to you
- Part-time work with full-time benefits
- Starting pay is \$20/hr

### Support Staff - Cafeteria staff, custodians, maintenance, and more!

- All positions start at \$15/hr
- 9, 10, 11, & 12-month positions available district-wide
- Established career ladders and professional growth opportunities
- Paid holidays, week of Thanksgiving off, and two weeks of winter break
- Tuition reimbursement program for those seeking additional certifications or degrees





## Benefits and Wellness

- Medical and Dental plan options
- Robust wellness programs:
  - Free well-care centers for employees on the health benefits plan
  - Access to free physical therapy through Hinge Health
  - Access to no-cost surgery options through Surgery Plus
  - Wellness incentives
  - Engaging healthy living workshops and activities
- Employee Assistance Program available to all employees
- Medical/Dependent Care Flexible Spending Accounts
- Pension of Investment plans through the Florida Retirement System
- Sick leave accrual and vacation accrual for 12-month employees
- Parental Leave - up to 15 days. See the Labor Relations union agreement.
- Bereavement time available
- Sick leave buy back



**Questions? Please contact a member of our recruitment team at 321-633-1000, ext. 11296 or 11298**

### Non-Discrimination Notice

The School Board of Brevard County, Florida does not discriminate on the basis of race, color, national origin, sex (including sexual orientation, transgender status, or gender identity), disability (including HIV, AIDS, or sickle cell trait), pregnancy, marital status, age (except as authorized by law), religion, military status, ancestry, or genetic information or any other factor protected under applicable federal, state, or local law. The district also provides equal access to its facilities to youth groups, as required by the Boy Scouts of America Equal Access Act. The School Board of Brevard County is in compliance with the Americans with Disabilities Act of 1990 (ADA) and the Amendment Act of 2008 (ADAA), the Florida Education Equity Act of 1984, Age Discrimination Act of 1967 and Section 504 of the Rehabilitation Act of 1973, Civil Rights Act of 1964 including: Title II, Title VI, and Title VII, United States Education Amendments of 1972 - Title IX, Age Discrimination in Employment Act (ADEA), and Individuals with Disabilities Act (IDEA). If you have questions, concerns, or wish to report possible violations of any of the above, please contact the below for proper assistance and handling. For concerns involving:

**The public or students, including Title IX, IDEA, 504, and Equity and Diversity matters contact: Title IX Coordinator**  
**Cathleen Erdmann**  
 2700 Judge Fran Jamieson Way  
 Melbourne, FL 32940  
 (321) 633-1000, Ext. 11280  
[erdmann.cathleen@brevardschools.org](mailto:erdmann.cathleen@brevardschools.org)



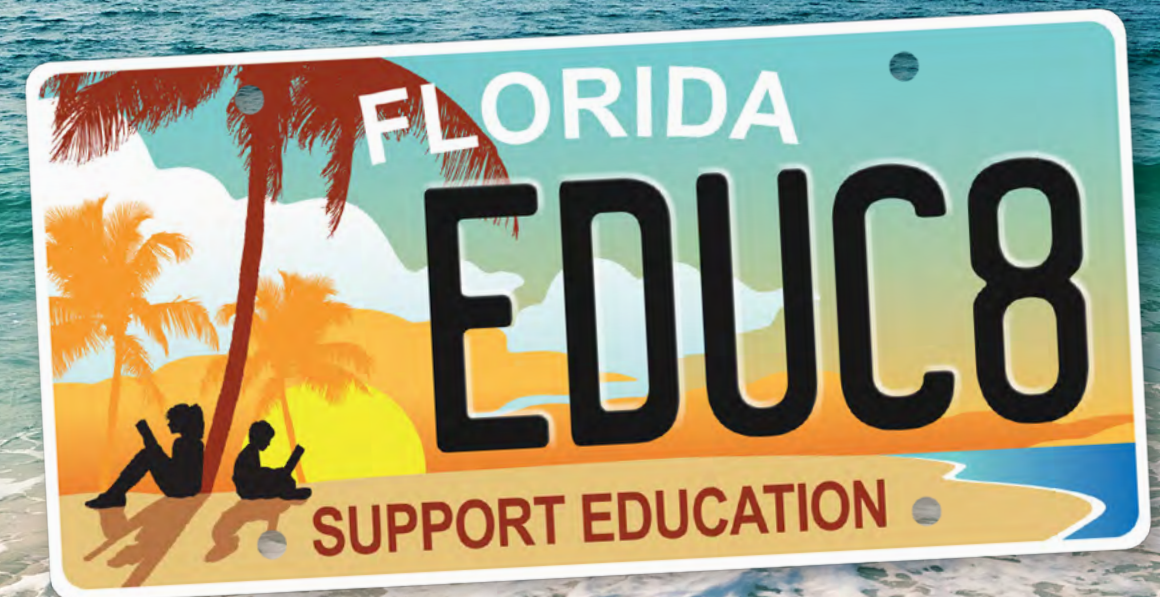
**Employees or job applicants contact: Director of Professional Standards and Labor Relations**  
**Rosemary Browning**  
 2700 Judge Fran Jamieson Way  
 Melbourne, FL 32940  
 (321) 633-1000 Ext. 11265  
[browning.rosemary@brevardschools.org](mailto:browning.rosemary@brevardschools.org)

Lack of English language skills will not be a barrier to admission and participation. The district may assess each student's ability to benefit from specific programs through placement texts and counseling, and if necessary, will provide services or referrals to better prepare students for successful participation. Reasonable accommodations are available for persons with disabilities to complete the application and/or interview process. Applicants and/or individuals with disabilities requesting accommodations under the Americans with Disabilities Act (ADA) may contact the Director of Professional Standards and Labor Relations for assistance. Educators are required to follow the Principles of Professional Conduct of the Education Profession in Florida (State Board of Education Rule 6B-1.006, FAC). To report alleged educator misconduct, contact Rosemary Browning, Director of Professional Standards and Labor Relations at 321-633-1000, ext. 11265 or [pslr@brevardschools.org](mailto:pslr@brevardschools.org). In the event that the district is not able to resolve your concerns, consider contacting the U.S. Department of Education, Office of Civil Rights for assistance. This Publication or portions of this publication can be made available to persons with disabilities in a variety of formats, including large print or audiotape. Student requests for this information should be made to the Office of Exceptional Student Education Program Support, (321) 633-1000, ext. 11520, at least two (2) weeks prior to the time you need the publication.

### MISSION STATEMENT

*Our Mission is to serve every student with excellence as the standard*

# LOCAL IMPACT. COAST TO COAST.



## \$20 PER TAG STAYS LOCAL

Supporting classrooms in your community is a breeze.  
*Purchase your new specialty plate today.*

[LICENSETOLEARNFL.COM](http://LICENSETOLEARNFL.COM)





**Tel: 321-541-1970**  
**www.AmegoInc.org**



Supporting individuals with Autism Spectrum Disorder and other developmental disabilities throughout their lives.

## NOW ACCEPTING REFERRALS

### Autism Diagnostic & Assessment Center

Amego provides evaluation and assessment services to individuals 18 years or younger.

### Applied Behavior Analysis (ABA) Services:

- In-Home & Community Based ABA Services
- Early Intervention ABA Services
- Center-Based ABA Programs
- Social Skills Groups



To make a referral or for more information, please contact us at:  
Phone: 321-541-1970, Fax: 352-388-3363, Email: AmegoABA@AmegoInc.org

GRINDING, ACHING AND EVEN  
"BONE-ON-BONE" KNEE PAIN  
CAN NOW BE TREATED WITHOUT  
SURGERY USING OUR ADVANCED  
NEW PROGRAM.

**YOUR \$59 KNEE PAIN  
RELIEF SPECIAL**

- DISCUSS YOUR KNEE PAIN HISTORY WITH US  
- THOROUGH EXAMINATIONS  
- NECESSARY X-RAYS

**CONTACT US:**

(321) 802-4521 / (321) 635-0377

1855 W Hibiscus Blvd. - Melbourne, FL. 32901

Info@tricochehealth.com    www.tricochehealth.com



Dr. Chad R. Reddick

## NEW NAME • NEW LOCATION SAME GREAT TREATMENT!

★ 18 Dale Avenue  
Melbourne

1433 South Patrick Drive  
Indian Harbour Beach

Babcock Street	Apollo Preschool	<input type="checkbox"/> Old Location
	Nelson Avenue	
	<input type="checkbox"/> Harbor City Dental	
	★ NEW Location	
	Dale Avenue	



**(321) 254-5232**  
MelbourneOrthodontics.com

QUALITY  
AFFORDABLE  
TREATMENT  
NO INTEREST  
FINANCING

FREE  
CONSULTATIONS  
INSURANCE  
ACCEPTED

CLEAR AND  
METAL BRACES  
INVISALIGN®





# Play hard, *bank easy!*

**Spend more time doing what you love and less time managing your money.**

Open a Student Debit/Checking Account with Community Credit Union of Florida for as little as \$25 and get everything you need to access and manage your money.

No Minimum Balance Requirement

No Monthly Service Fee with eStatements

FREE Debit Card

- Choose your design, including your school mascot.
- Load your debit card into your digital wallet.
- Use SecurLock as an extra safety feature.
- Earn interest on account balances when you use your debit card at least 20 times each month.\*
- Shop with Purchase Rewards.

Transfer money to family or friends using Zelle®.

Set up automatic savings — and more.

**Open your CCU Florida account today!**

Membership available in Brevard, Indian River, Orange, Osceola, Polk & Volusia Counties. A \$5 one-time membership fee is required.

\*To earn interest on your balances, you must use your debit card 20 times by 5pm ET on the last day of a calendar month and be enrolled in eStatements. ATM transactions are not counted towards total transactions.

Apply at any branch or online:  
[ccuFlorida.org/student](https://ccuFlorida.org/student)



**321.690.2328 • 1.800.690.2338**  
**[ccuFlorida.org](https://ccuFlorida.org)**



Federally insured by NCUA