



OUR MISSION: To Serve EVERY Student
with Excellence as the Standard

ORGANIZATIONAL STRUCTURE

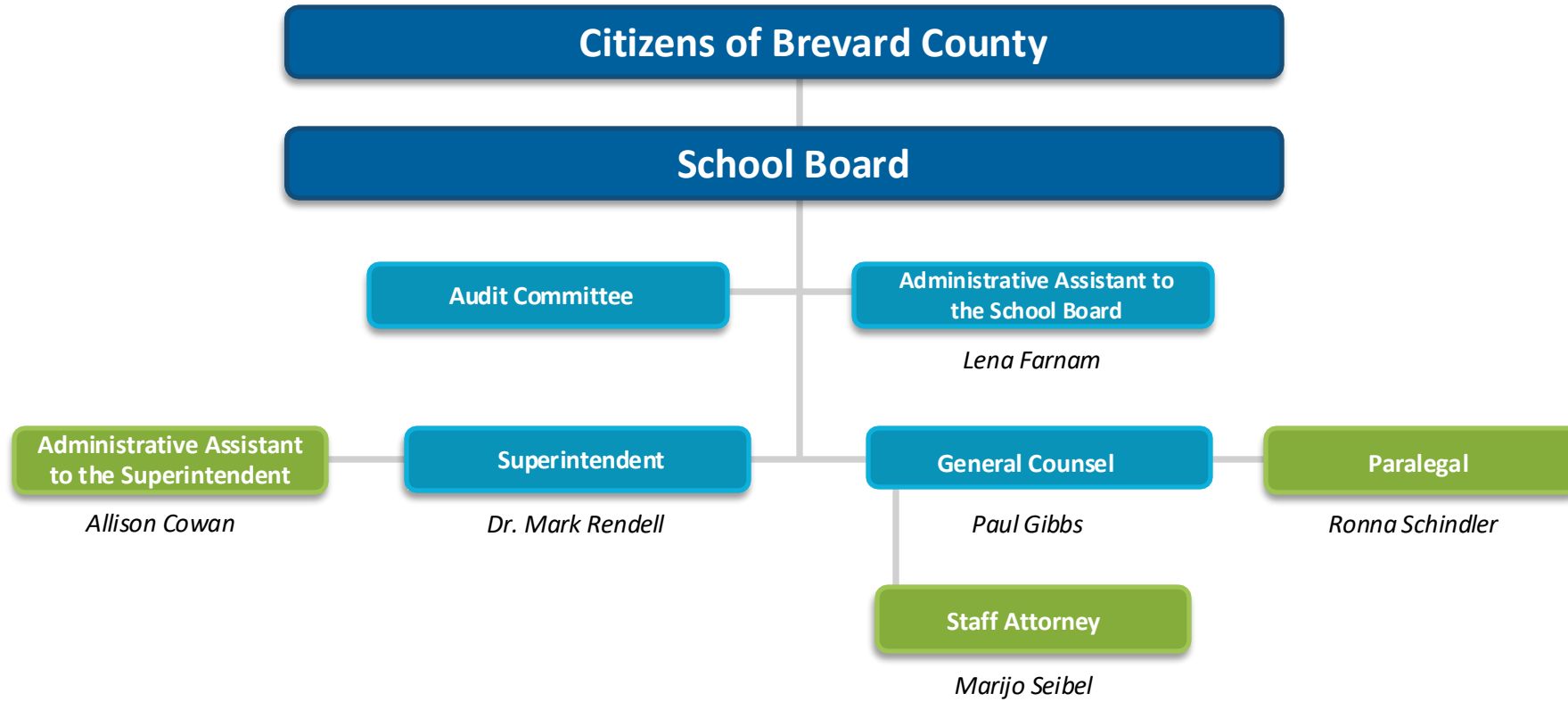


- Direct Level or Higher
- Direct Reporting Level
- Second Reporting Level



BOARD OFFICE

(9000)



- Direct Level or Higher
- Direct Reporting Level
- Second Reporting Level

SUPERINTENDENT'S OFFICE (9100)



Superintendent – Dr. Mark Rendell

Administrative Assistant to the Superintendent

Allison Cowan

District & School Security

Major Robert Cline

Chief Operating Officer

Rachad Wilson

Assistant Superintendent of Human Resources

Ryan Dufrain

Chief Financial Officer

Cynthia Lesinski

**Assistant Superintendent/
Chief Information Officer**

Russell Cheatham

**Deputy Superintendent/Assistant
Superintendent of Facilities
Services**

Susan Hann

Chief Communications Officer

Russell Bruhn

Chief of Schools

James Rehmer

Assistant Superintendent of Curriculum & Instruction

Tara Harris

Assistant Superintendent of Student Services

Pamela Dampier

- Direct Level or Higher
- Direct Reporting Level
- Second Reporting Level

HUMAN RESOURCES

(9400)



Assistant Superintendent – Human Resources Services
Ryan Dufrain

Administrative Assistant
Linda Nevil

Manager – Compensation & Position Control 9410

Director–Professional Standards/Labor Relations

Director – Professional Learning & Development

Manager - Employment

TBD

Rosemary Browning

Bobby Pruett

Katey Benne

**Employment Specialist V
Position Control**
Rebecca Leeseburg

Position Control Analyst
Louis Merrill

Analyst III - Compensation
Ellie Kelly

Senior HRIS Analyst
Carlene Rosa

HRIS Analyst
Deborah Voskuhl

**Millage Specialist
9411**
Montel Ferguson

Millage Compensation Analyst - 9411
Kelly Chiniski

Employment Specialist IV
Denise Fulk
Ed Fuster
Lissette Mendez
Tabitha Raines

Onboarding
Mariane Absolu-Gaudin
Linda Wilson

Employment Specialist IV
Tricia Daniels
Janet deJesus
Victoria McReynolds
Gina Petterson
Janel Troxel

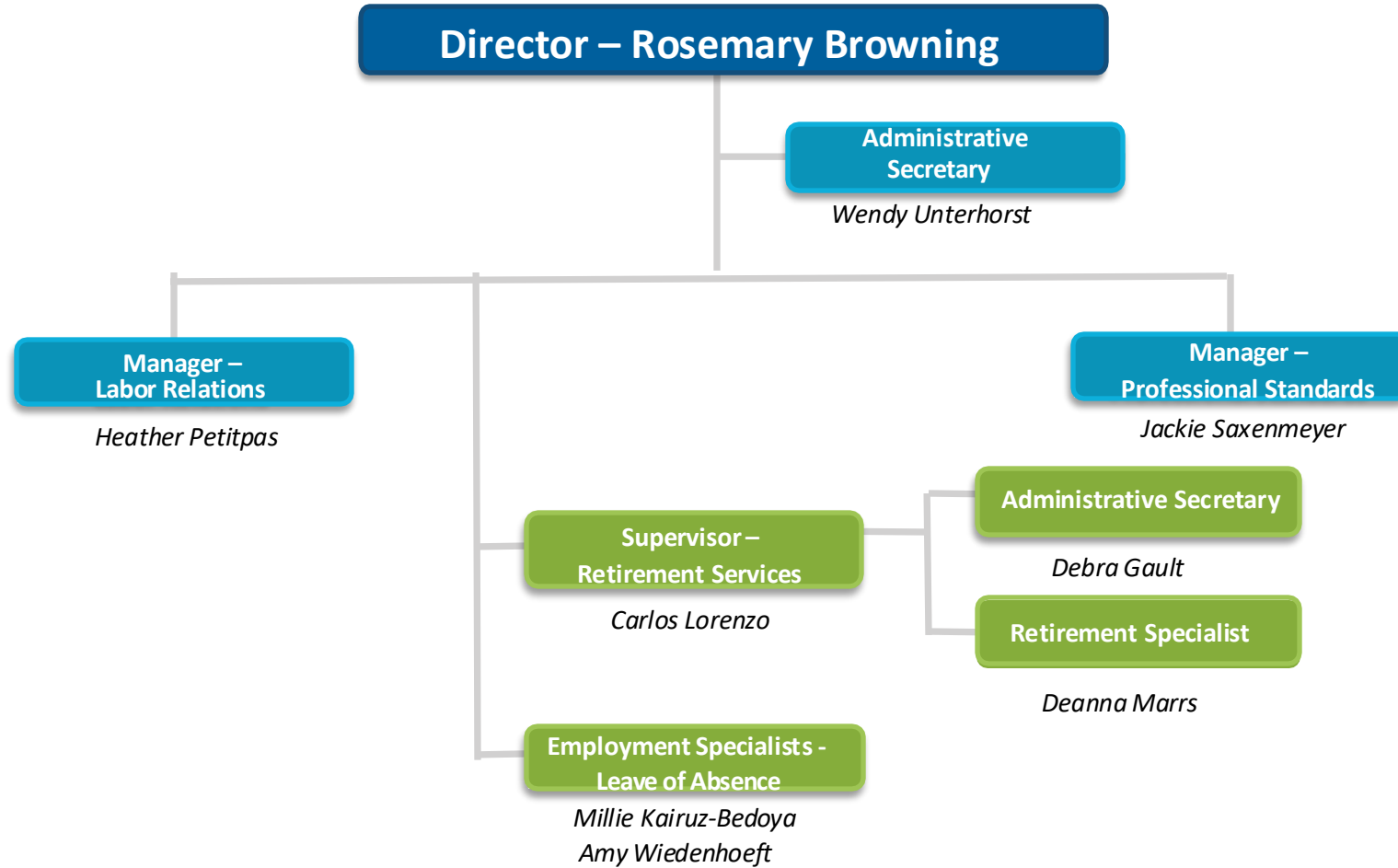
Employment Specialist V
Drew Kramer – Drug Screening
Sandy Kintigh-Substitutes

**Employment Specialist II
Applicant Intake**
Aprile Lindsey
Rachel Jackson

- Direct Level or Higher
- Direct Reporting Level
- Second Reporting Level

HUMAN RESOURCES

Professional Standards & Labor Relations (9420)



- Direct Level or Higher
- Direct Reporting Level
- Second Reporting Level

HUMAN RESOURCES

Professional Learning & Development (9485)



Director – Bobby Pruett

Administrative Secretary
Lisa Greene

Peer Mentors

Tanya Brown
Shannon Dufrane
Quantia Edmonds

Professional Development Specialist

Karrie Hieber
Brenda Mashiotta
Bridget Reed

Coordinator – Staff Development for Teachers/Leaders

Lisa Higham

Content Specialist

Lisa Stanley
TBD

Staff Development Specialist

Linda Buffum

Manager – HR & Project Mgt. 9400

Dori Howard

Human Resources Recruiter

Victoria Huss
Susan Kirk

Employment Specialist III

Delia (Itzel) Copley
Mary MacKay

Senior HR Partner - Certification

Sharon Doucett-Doran

HR Partner - Certification

Raquel Figueroa
Elizabeth Squires

**Employment Specialist III
VOE**

Michele Capitelli

Employment Specialist IV

TBD

Employment Specialist V

Mary Peterson

- Direct Level or Higher
- Direct Reporting Level
- Second Reporting Level

STUDENT SERVICES

(9260)



Assistant Superintendent – Pamela Dampier

Accounting Specialist II

Kaye Benton

Administrative Assistant

Melinda Maynard

**Director
Compliance and Administrative
Support**

Dr. Patricia Fontan-Esparza

**Director
ESE Program Support**

Dr. Kimberly Bias

**Director
Systems of Support**

Joshua Kristol

**Director
Strategic Programming
& Support**

Julie Kastensmidt

**Director
Student, Staff and Community
Engagement**

Hilary Poole

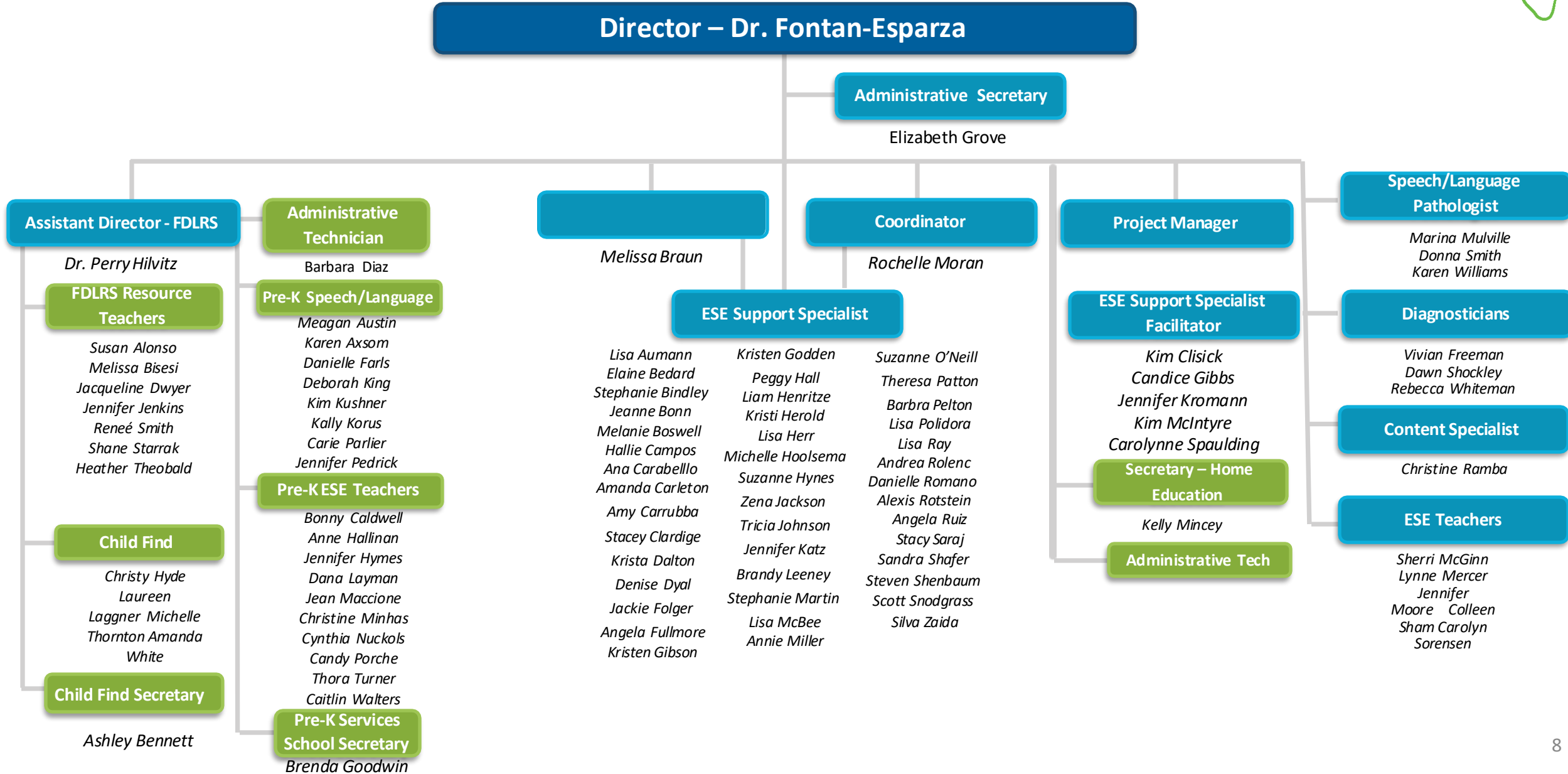
**Director
Psychological and Mental Health
Support**

Dr. Jayna Jenkins

- Direct Level or Higher
- Direct Reporting Level
- Second Reporting Level

STUDENT SERVICES

Compliance and Administrative Support (9290/9285/9815/1021)



- Direct Level or Higher
- Direct Reporting Level
- Second Reporting Level

STUDENT SERVICES

Program Support (9280/9816/1073/9221)



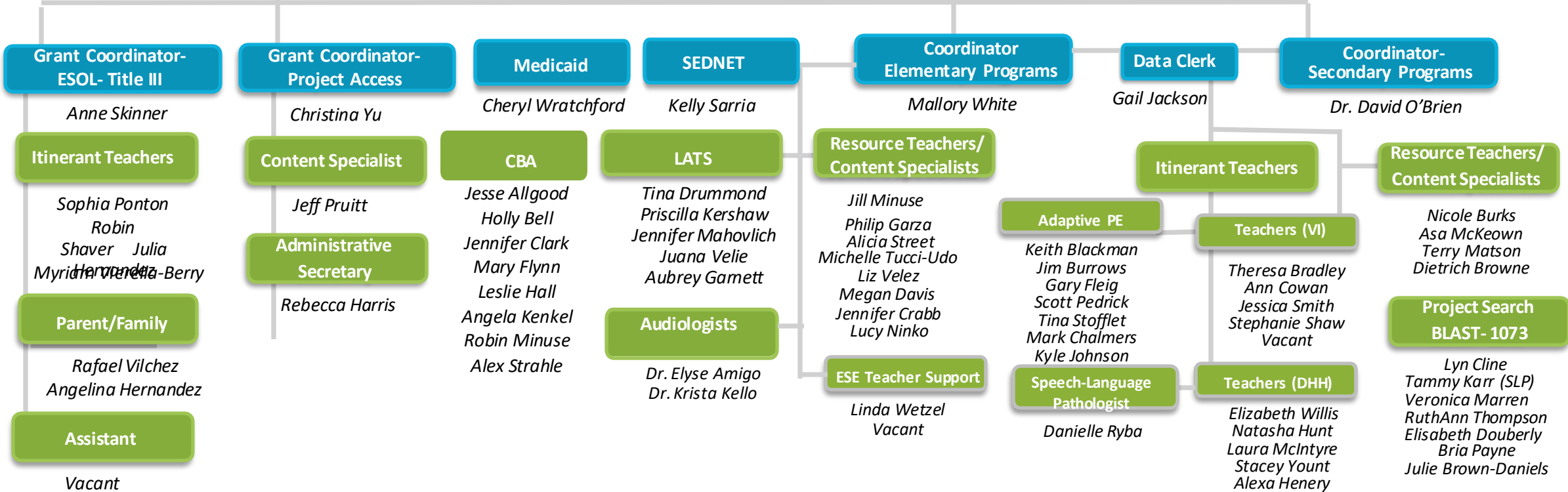
Director – Dr. Kimberly Bias

Accounting Specialist

Sue Falcioni

Administrative Secretary

Merion Sadowitz



- Direct Level or Higher
- Direct Reporting Level
- Second Reporting Level

STUDENT SERVICES

Psychological & Mental Health Services (7100)



Director – Dr. Jayna Jenkins

Coordinator

Dr. Chana Speir

Administrative Secretary

Ms. Donna Tabb

Mental Health

Mental Wellness
Pathways & Referrals

Youth Mental Health
First Aid

Threat Management
& Assessment

District Mental
Health Counselor

Crisis Response &
Recovery

Suicide Prevention
Suicide Risk Inquiry
Consultants

Psychological Services

School Psychologists

Social Work Services

Check & Connect SW

Foster Care

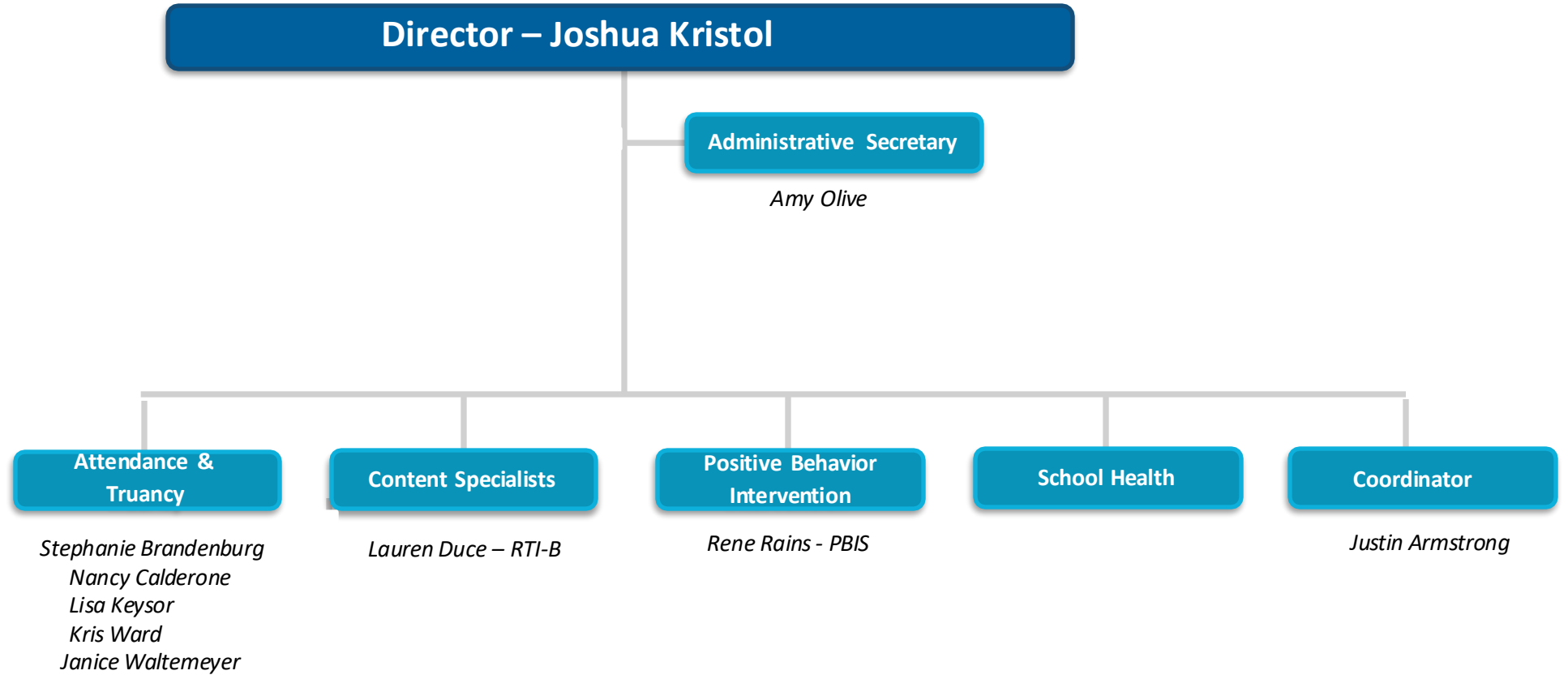
District Social Worker
Elem. & Secondary
Social Work Services

Substance Use/Abuse
Prevention

- Direct Level or Higher
- Direct Reporting Level
- Second Reporting Level

STUDENT SERVICES

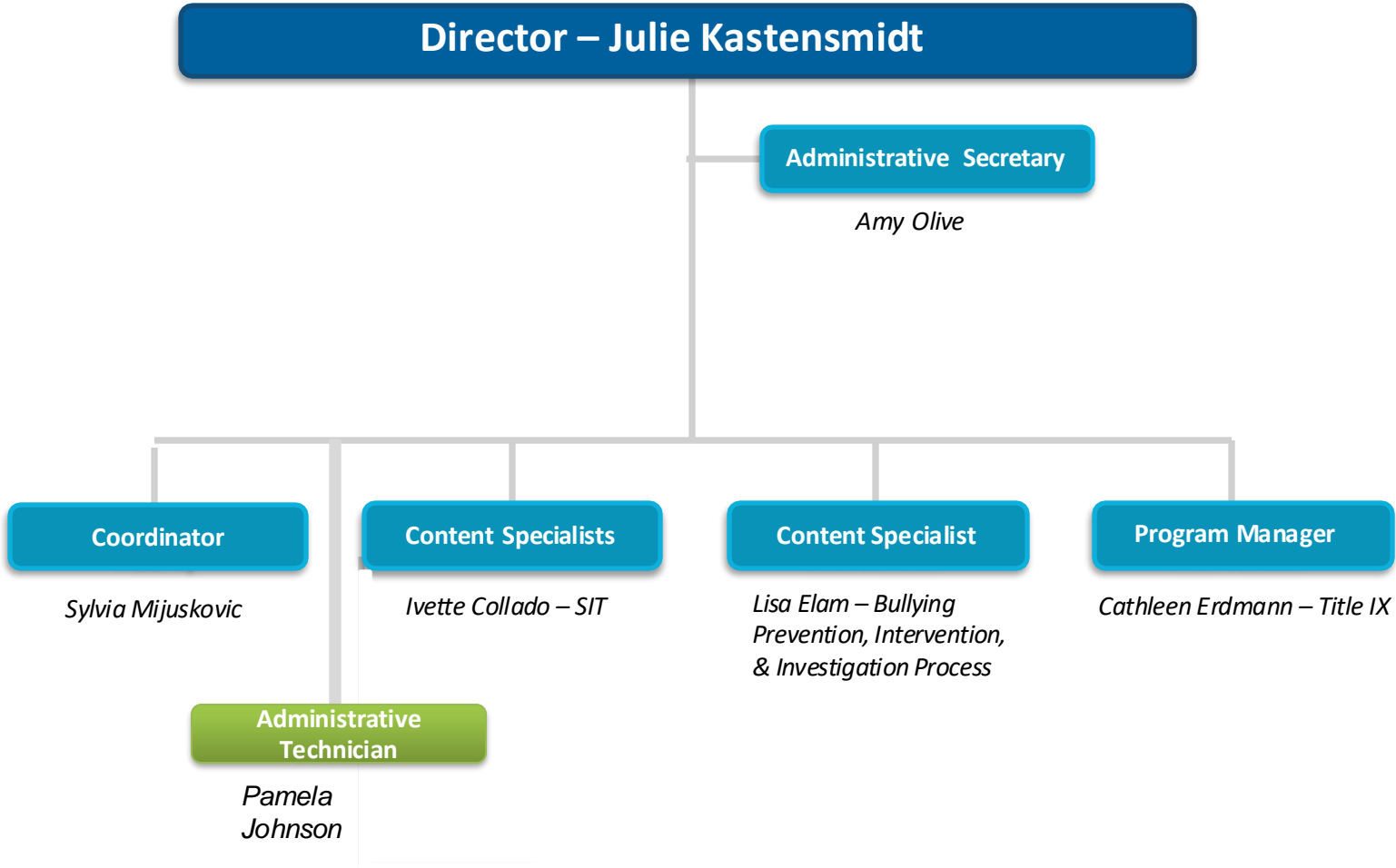
Systems of Support (9295)



- Direct Level or Higher
- Direct Reporting Level
- Second Reporting Level

STUDENT SERVICES

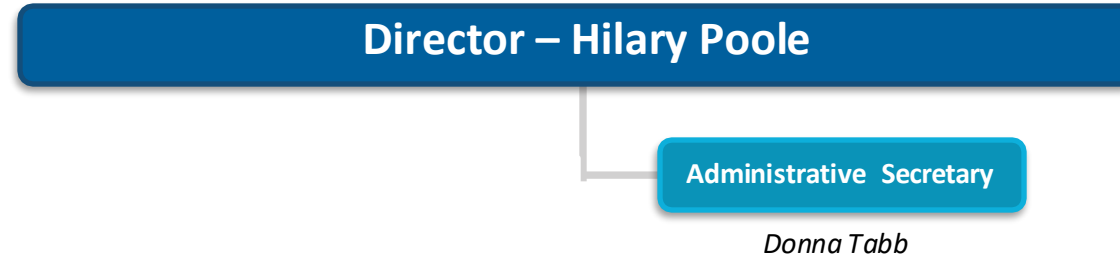
Strategic Programming and Support (9264)



- Direct Level or Higher
- Direct Reporting Level
- Second Reporting Level

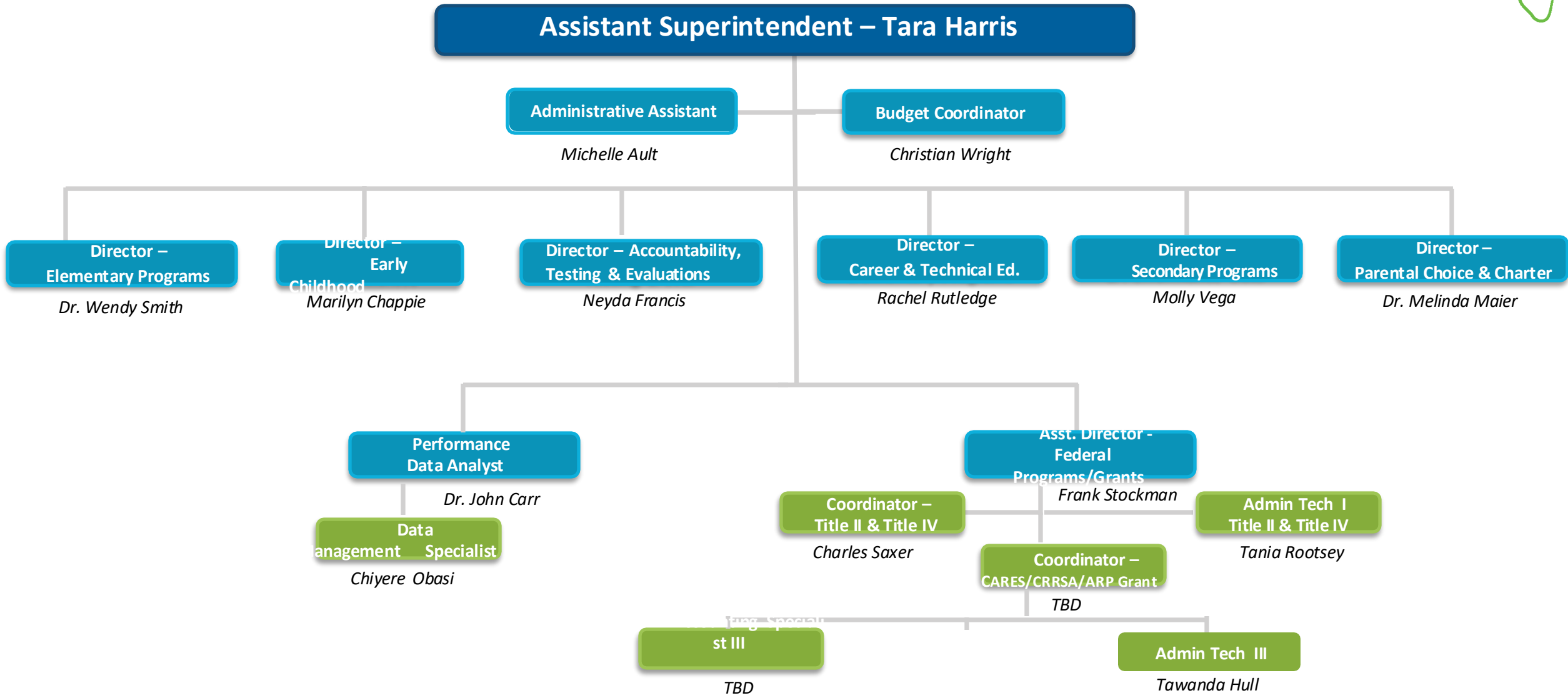
STUDENT SERVICES

Student, Parent, and Community Engagement (9263)



- Direct Level or Higher
- Direct Reporting Level
- Second Reporting Level

CURRICULUM & INSTRUCTION (9201)



- Direct Level or Higher
- Direct Reporting Level
- Second Reporting Level

CURRICULUM & INSTRUCTION

Elementary Programs/Head Start (9210 & 9212 & 9215)



RT – Resource Teacher
CS – Content Specialist

Director – Dr. Wendy Smith

School Improvement

Janet Stephenson

R.A.I.S.E Coordinator

Jenifer Mallory

Administrative Secretary

*Kelissa Cooperwood (0.5)
Joy Palatucci (0.25)*

English/Language Arts

*Jennifer Cockrell – RT
Debbie Wood – RT
Patti Henning – CS
Laurel
Preston Instructional Coach Title I
Dr. Kathryn
Davis Instructional Coach Title I*

Math

*Shruti Raman – CS
TBD
Instructional Coach Title I
Sandy Davis
Instructional Coach Title I*

Science

Nicole Kuiper – CS

Social Studies

Christina Uttlinger – CS

Gifted

Amanda Howell – CS

Media K - 12

*Missy Slack – CS
Patricia Ely - CS*

Head Start Assistant Director

Terri Barlow

Head Start Manager – Family Services

Michelle Dale

Accounting Spec. III

Carmen Higgins

Administrative Secretary

Suzanne Diaz

Instructional Coach

*Tarra Bertram
Kiley Landis
TBD
Kendra Wolford
Veronica Mitchell*

Data Specialist

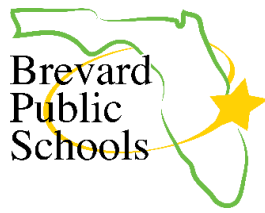
Patricia Pultz

Family Advocates

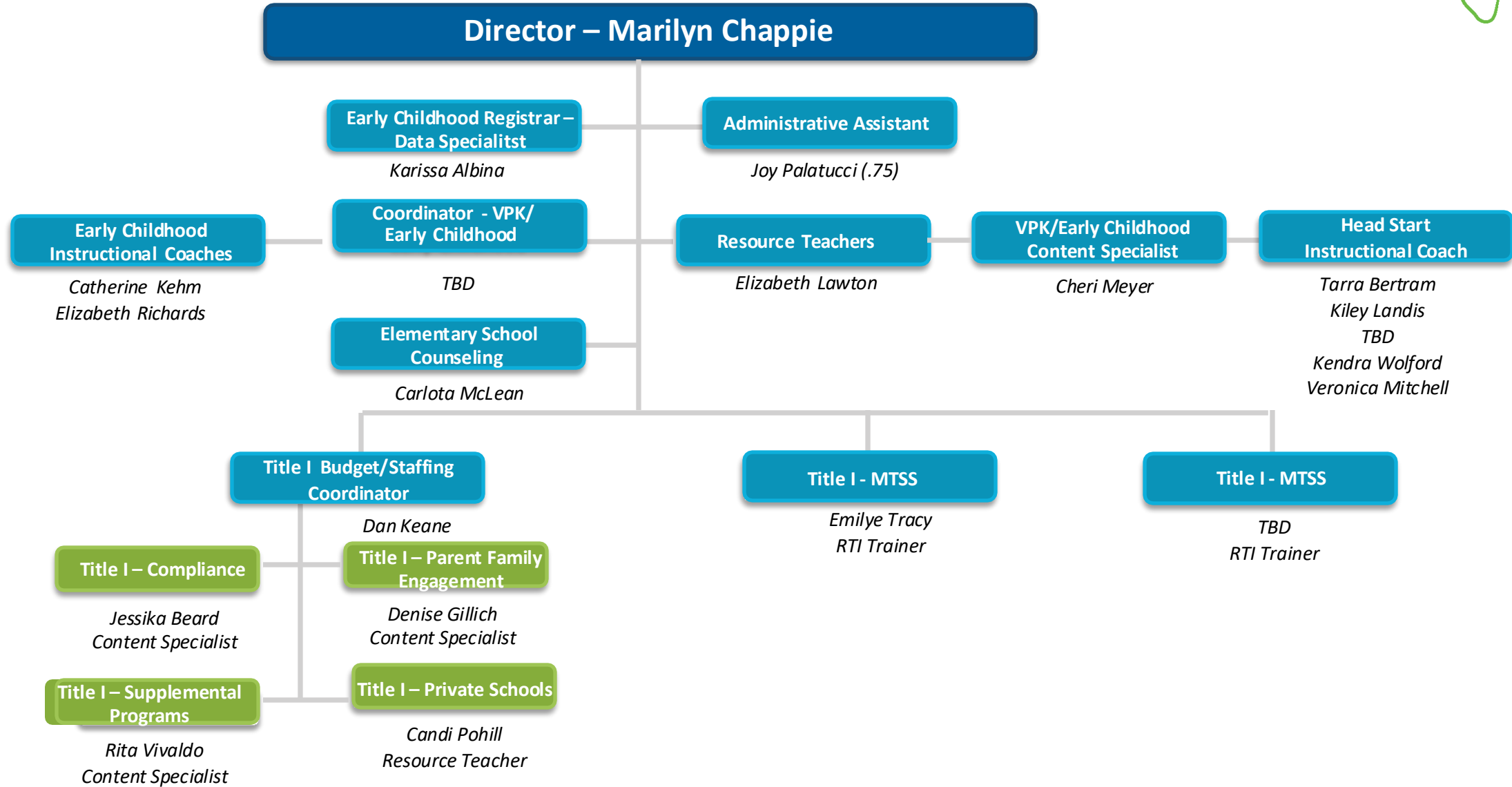
<i>Yesenia Cepeda Jenifer Clarke Jocelyne Dagher TBD Beatrice Benjamin Priscilla Meadows</i>	<i>Sharon Fairclough Norma Jackson Ernesta Jordan Angela Narcisse Yaneris Velez-Scott</i>
--	---

- Direct Level or Higher
- Direct Reporting Level
- Second Reporting Level

CURRICULUM & INSTRUCTION



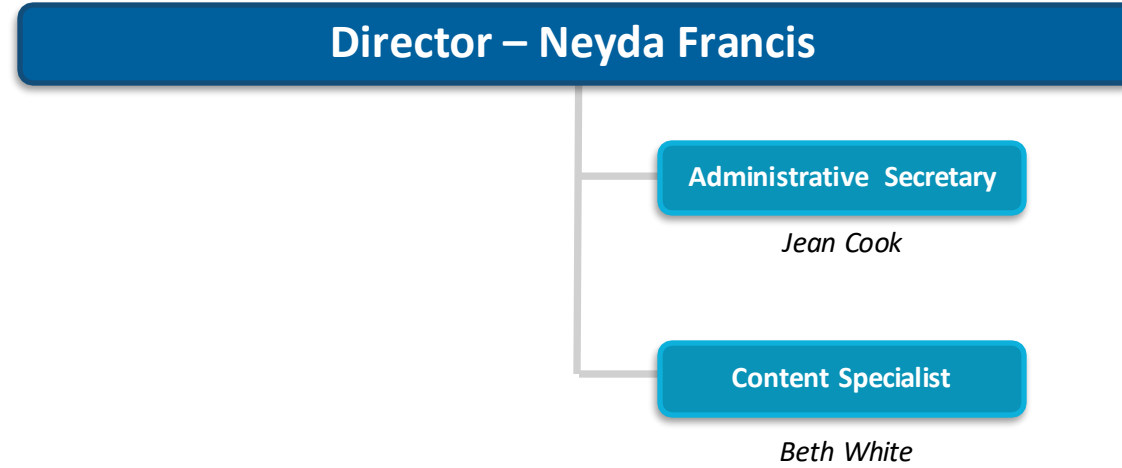
Early Childhood/Title I (9210 & 9212)



- Direct Level or Higher
- Direct Reporting Level
- Second Reporting Level

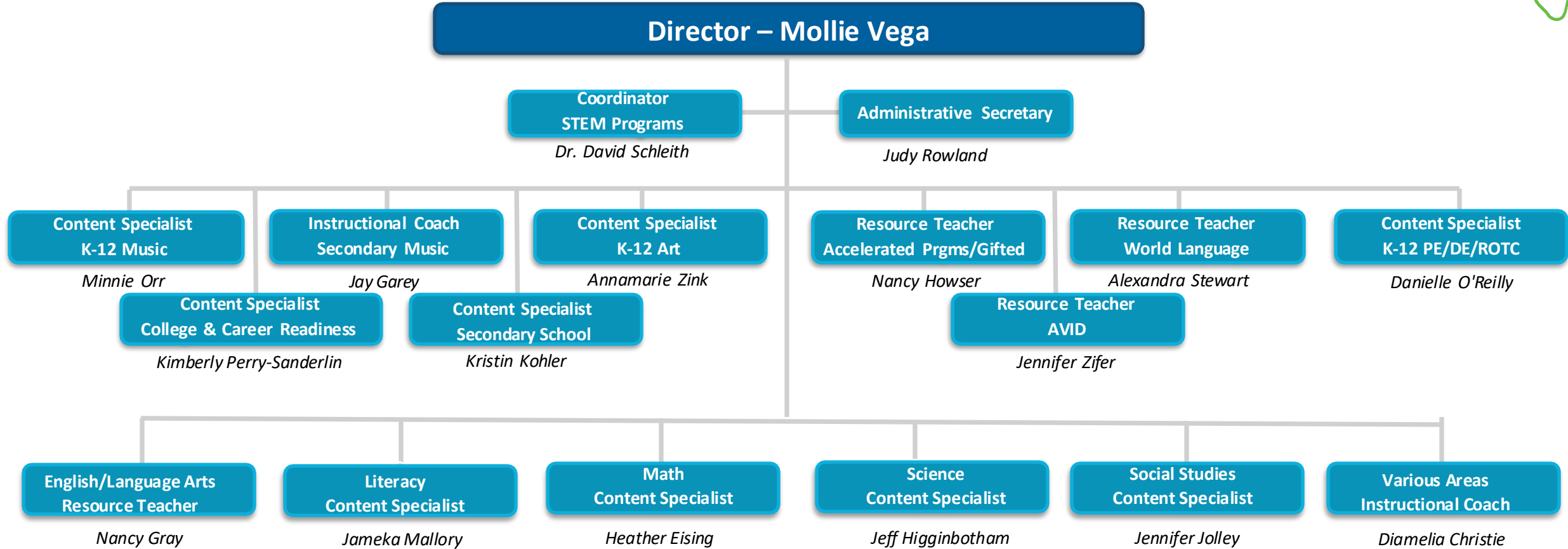
CURRICULUM & INSTRUCTION

Accountability, Testing & Evaluation
(9250)



- Direct Level or Higher
- Direct Reporting Level
- Second Reporting Level

CURRICULUM & INSTRUCTION (9231)



- Direct Level or Higher
- Direct Reporting Level
- Second Reporting Level

CURRICULUM & INSTRUCTION

Career & Technical Education (9270)



Director – Rachel Rutledge

Administrative Secretary

Tiffany Lowrie

Specialist I - Accounting

Claudia Morett

- Specialist - Work-Based Learning**
- Internships/FTE Audit Records
 - Pre-Apprenticeships/Florida Ready to Work Program
 - Pathways to Career Opportunities Grant/Strategic Plan Support
 - BLAST and Vocational Rehabilitation Grant
 - Middle School Job Shadowing Liaison

Peter Phillips & Farah Shakoorian

- Content Specialist**
- Aquaculture
 - Culinary Arts
 - Information Technology: Cybersecurity, Game Simulation, Animation, Programming, Web App Development & Programming
 - Family & Consumer Sci. - MS & HS
 - College & Career Specialist Liaison
 - CTE Choice
 - New Teacher Training
 - Perkins Grant
 - School Counselor Liaison
 - Testing Calendar
 - Computer Science Grant

Cathy Bramlett

- Content Specialist**
- Digital Design/Digital Media Multimedia
 - Administrative Office Specialist, Business Management & Analysis, Finance, International Business
 - Digital Information Technology
 - HVAC
 - Marketing Education
 - Charter Schools
 - Adobe Licenses
 - CAPE Data Verification District Contact for Industry Certifications
 - Special Populations
 - Certiport Reports

Phil Younger

- Resource Teacher**
- 911/Public Safety Telecommunicator
 - Criminal Justice Operations
 - Maritime Technology
 - Skilled Trades: Auto Collision Repair & Refinishing; Auto Maintenance & Light Repair, Building Construction Technology, Outboard Marine Service Technology
 - Advisory Boards
 - Annual CTE CC Event
 - Appropriations
 - CareerSource Consortium Mtgs
 - Teachers in Industry for Educational Support (TIES)
 - NOCTI

Jim Johnson

- Content Specialist**
- Firefighting
 - Health Sciences: Dental Aide, Emergency Medical Responder, Exercise Science, Medical Administrative Specialist, Nursing Assistant
 - Principles of Teaching
 - Early Childhood Education
 - Articulation Agreements
 - Bright Futures, CTE
 - Dual Enrollment
 - Career Academies
 - New grant initiatives
 - Non-degreed CTE Certification

Jenny King

- Content Specialist**
- Business Technologies, Middle School
 - Coding Middle School
 - Hospitality & Tourism
 - Cloud Computing & Virtualization
 - Elementary Digital Tools
 - School Liaison for Industry Certification Technical Support
 - CAPE Data Verification District Contract for Digital Tools
 - Entrepreneurship Grant
 - Computer List
 - ICT Reports
 - Proctor Forms

Dr. Nicole Combs

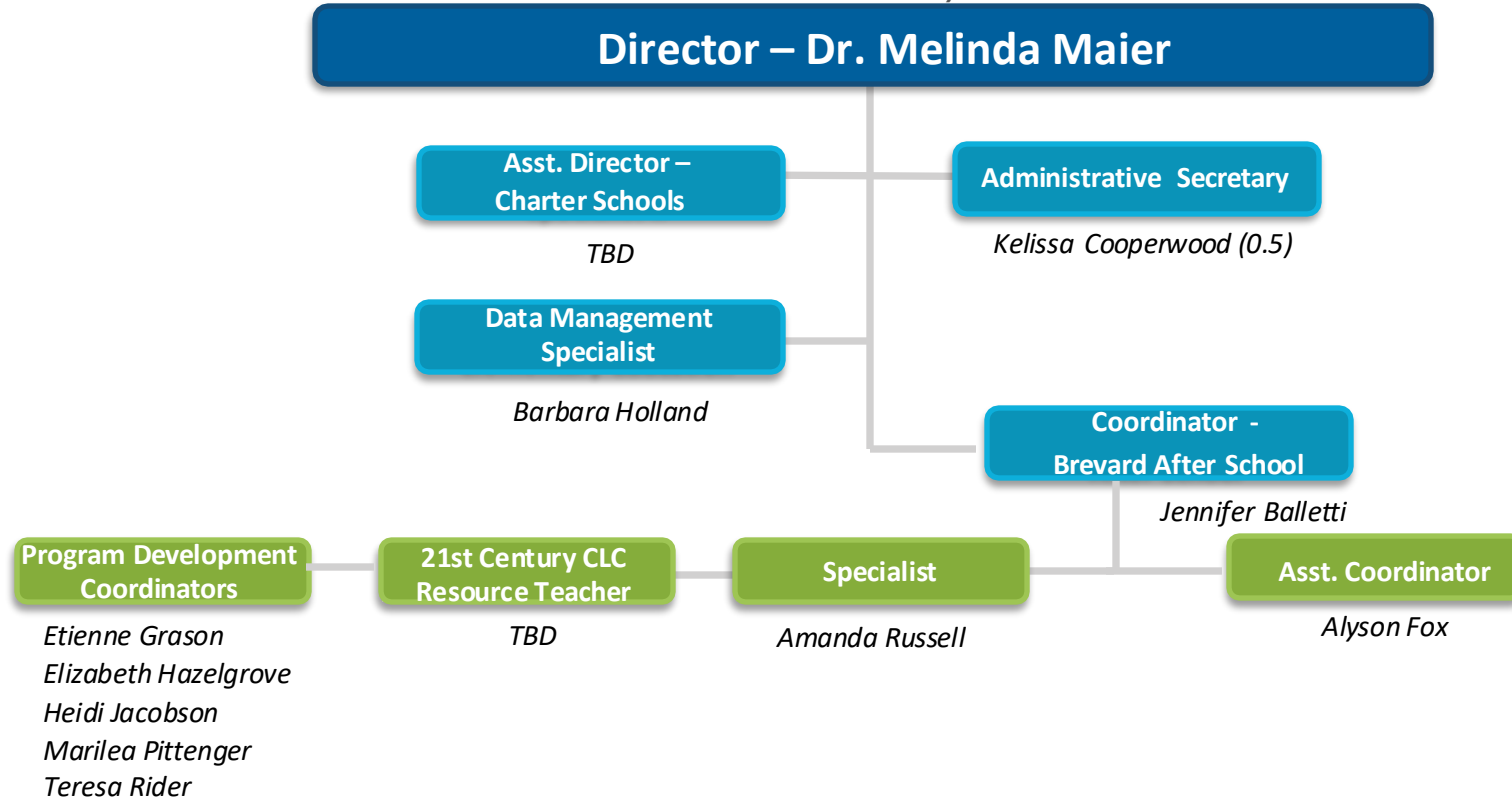
- Resource Teacher**
- Advanced Manufacturing Technology
 - Applied Engineering Technology
 - Aviation Assembly
 - Drafting/Tech Design
 - Environmental Water Technology
 - Machining Technology Education
 - Middle School Career Courses
 - Middle School Production Technology
 - TV Production Technology/Digital Video
 - Orientation to Careers TV & Robotics
 - CTE STEM Initiatives
 - Textbook Adoptions
 - CTSO Lead

Dennis Soboleski

- Direct Level or Higher
- Direct Reporting Level
- Second Reporting Level

CURRICULUM & INSTRUCTION

Open Enrollment - Charter - Brevard After School 9210/9219



- Direct Level or Higher
- Direct Reporting Level
- Second Reporting Level

CHIEF OF SCHOOLS

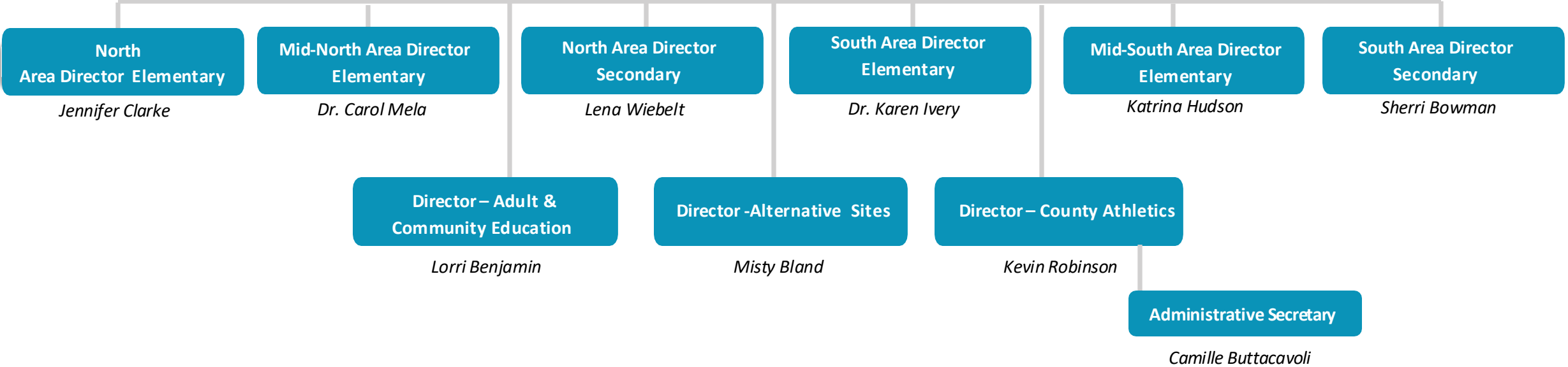
(9203)



Chief of Schools – James Rehmer

Administrative Assistant

Kathy Whittle



- Direct Level or Higher
- Direct Reporting Level
- Second Reporting Level

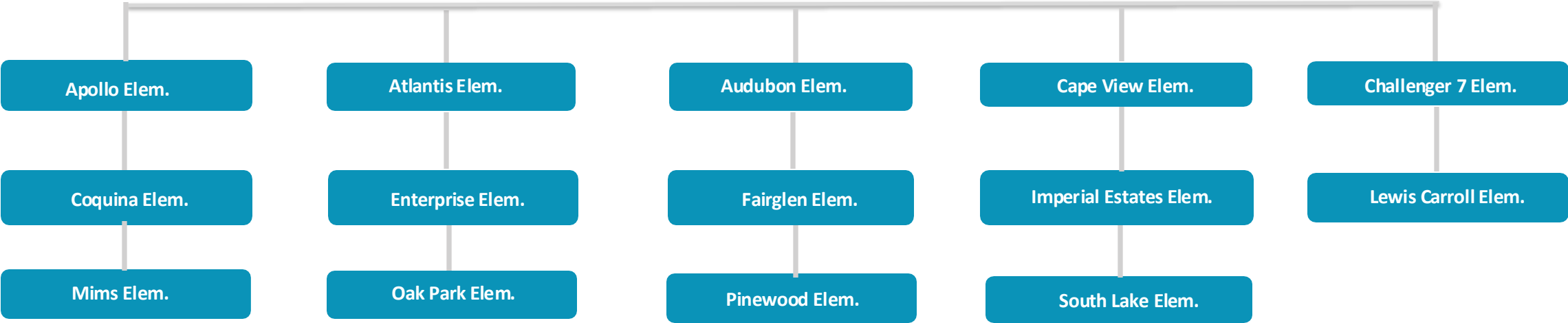
CHIEF OF SCHOOLS (9203)



**Jennifer Clarke – Director
North Area Elementary Schools**

**Elaine Lindo
Administrative Secretary**

14 North Area Elementary Schools



- Direct Level or Higher
- Direct Reporting Level
- Second Reporting Level

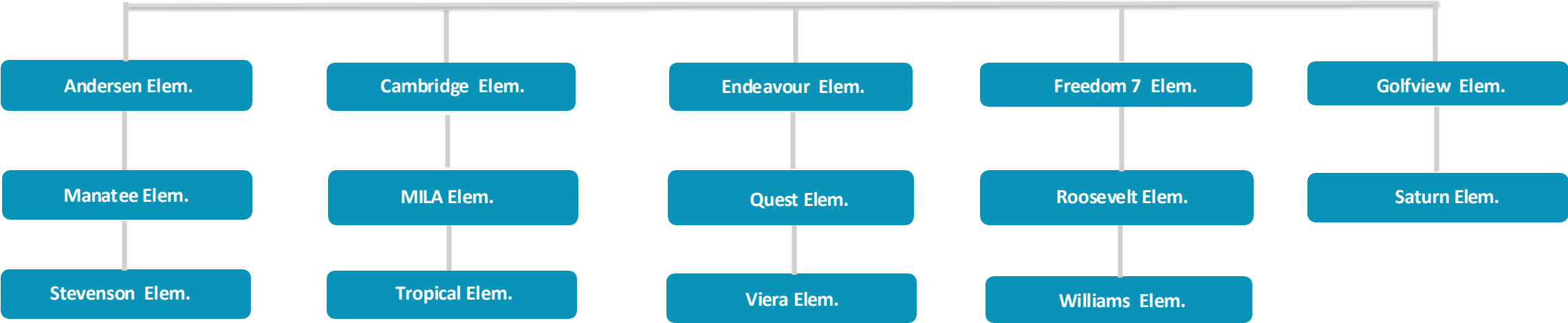
CHIEF OF SCHOOLS (9203)



**Dr. Carol Mela – Director
Mid-North Area Elementary Schools**

Elaine Lindo
Administrative Secretary

14 Mid-North Area Elementary Schools



- Direct Level or Higher
- Direct Reporting Level
- Second Reporting Level

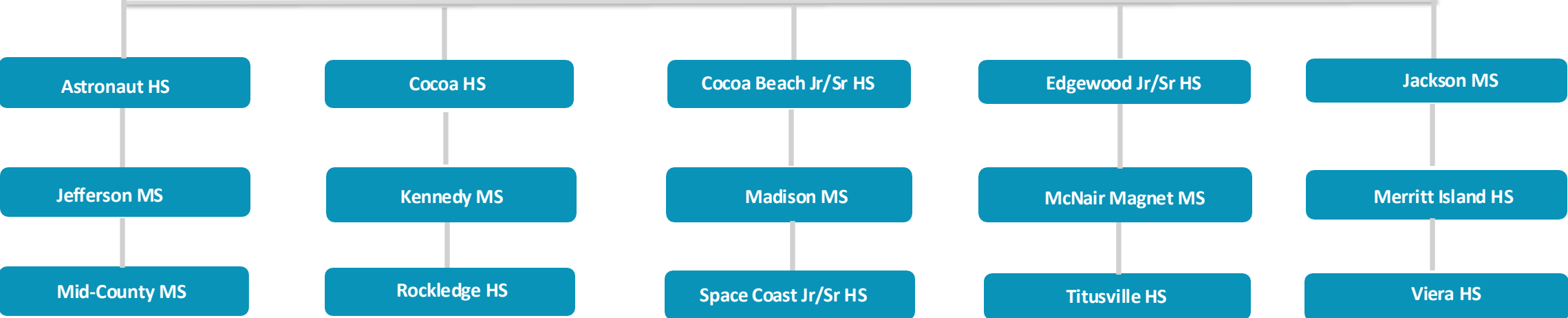
CHIEF OF SCHOOLS (9203)



**Lena Wiebelt – Director
North Area Secondary Schools**

**Elaine Lindo
Administrative Secretary**

15 North Area Secondary Schools



- Direct Level or Higher
- Direct Reporting Level
- Second Reporting Level

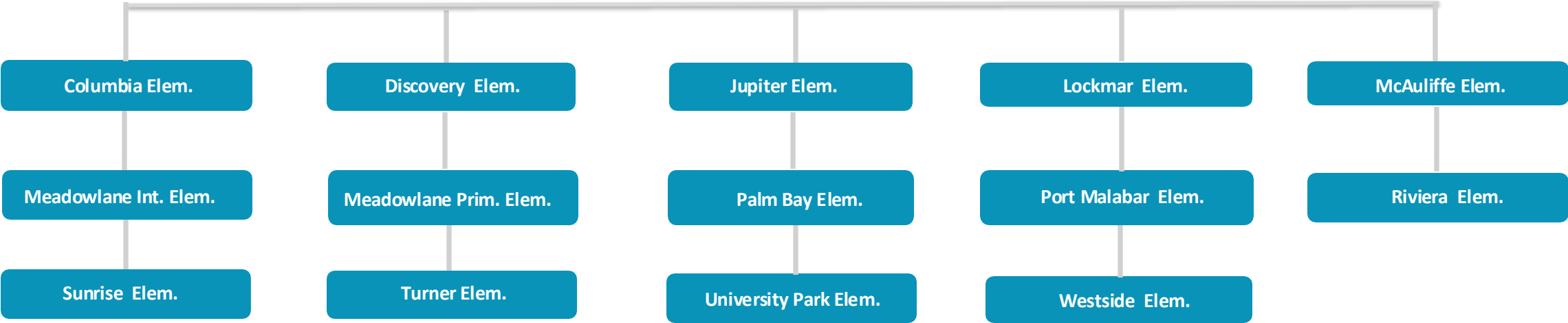
CHIEF OF SCHOOLS (9203)



**Katrina Hudson – Director
South Area Elementary Schools**

**Niki Jimenez
Administrative Secretary**

14 South Area Elementary Schools



- Direct Level or Higher
- Direct Reporting Level
- Second Reporting Level

CHIEF OF SCHOOLS

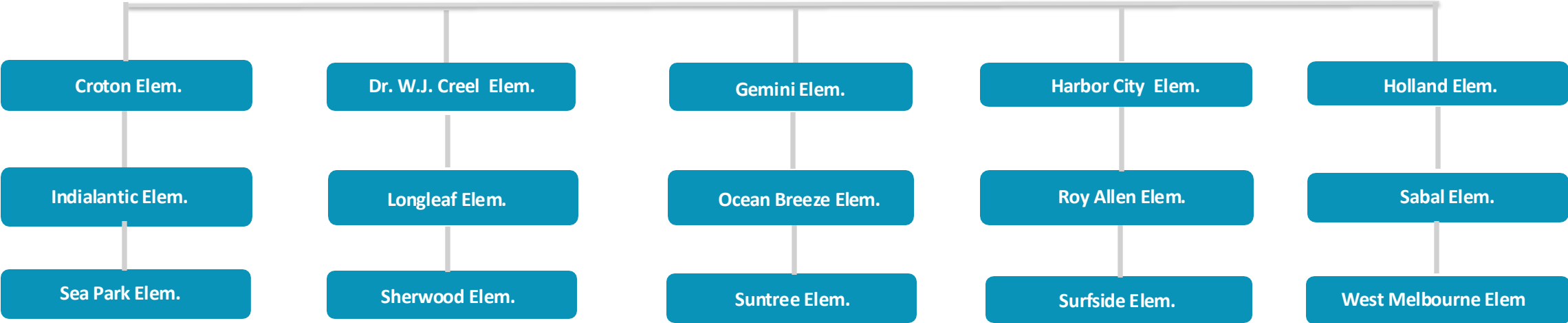
(9203)



**Dr. Karen Ivery – Director
Mid-South Area Elementary Schools**

Niki Jimenez
Administrative Secretary

15 Mid-South Area Elementary Schools



- Direct Level or Higher
- Direct Reporting Level
- Second Reporting Level

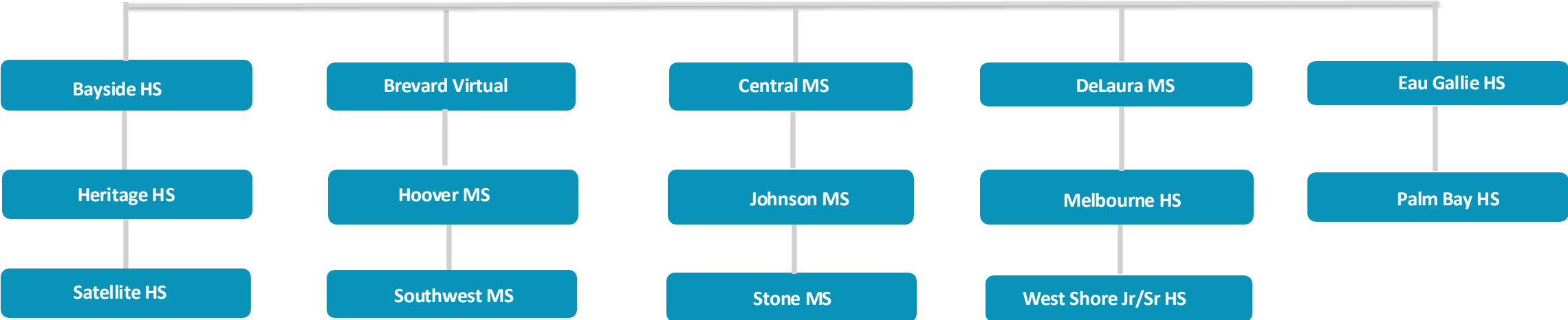
CHIEF OF SCHOOLS (9203)



**Sherri Bowman – Director
South Area Secondary Schools**

**Niki Jimenez
Administrative Secretary**

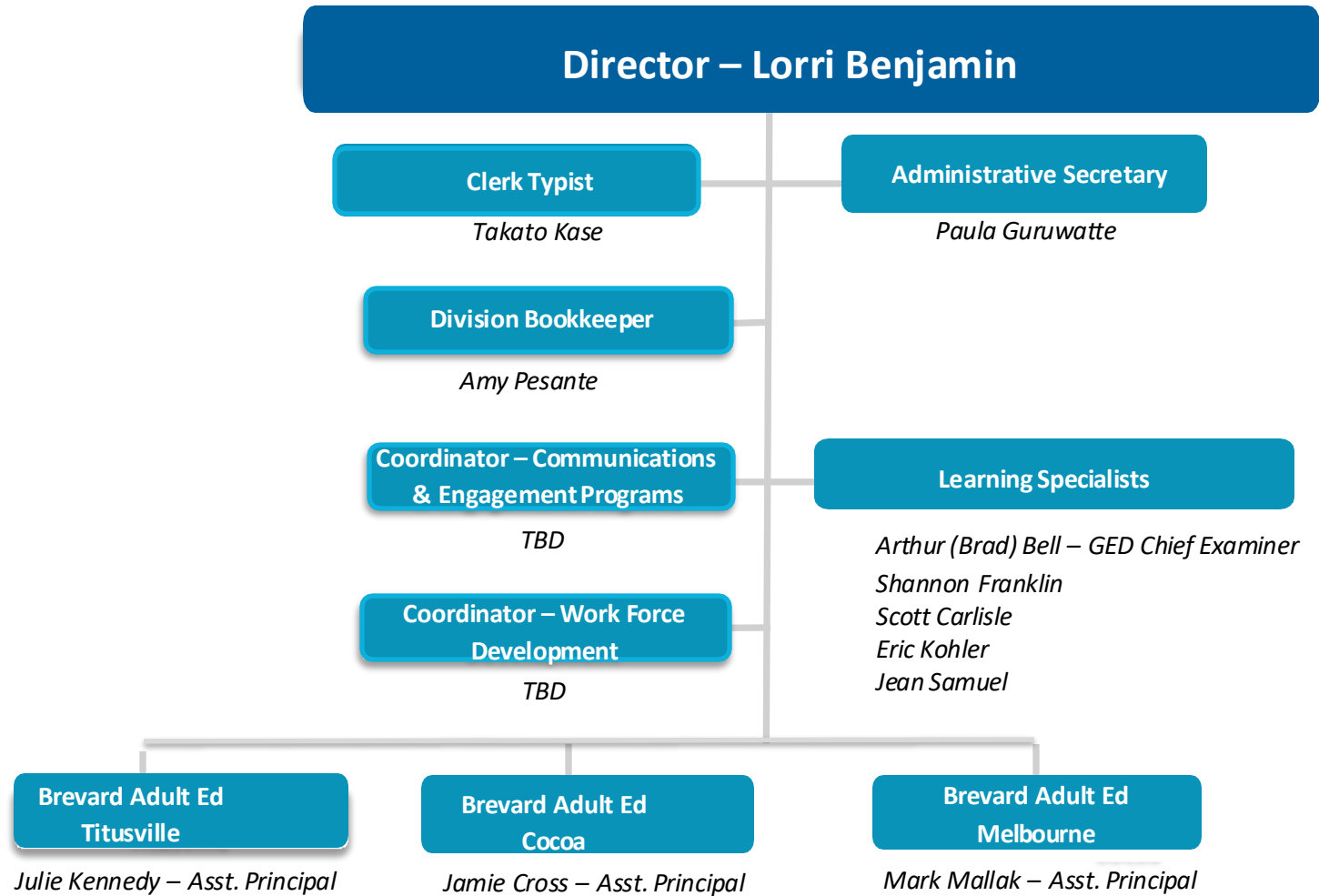
14 South Area Secondary Schools



- Direct Level or Higher
- Direct Reporting Level
- Second Reporting Level

CHIEF OF SCHOOLS

Adult & Community Education (9240)



- Direct Level or Higher
- Direct Reporting Level
- Second Reporting Level

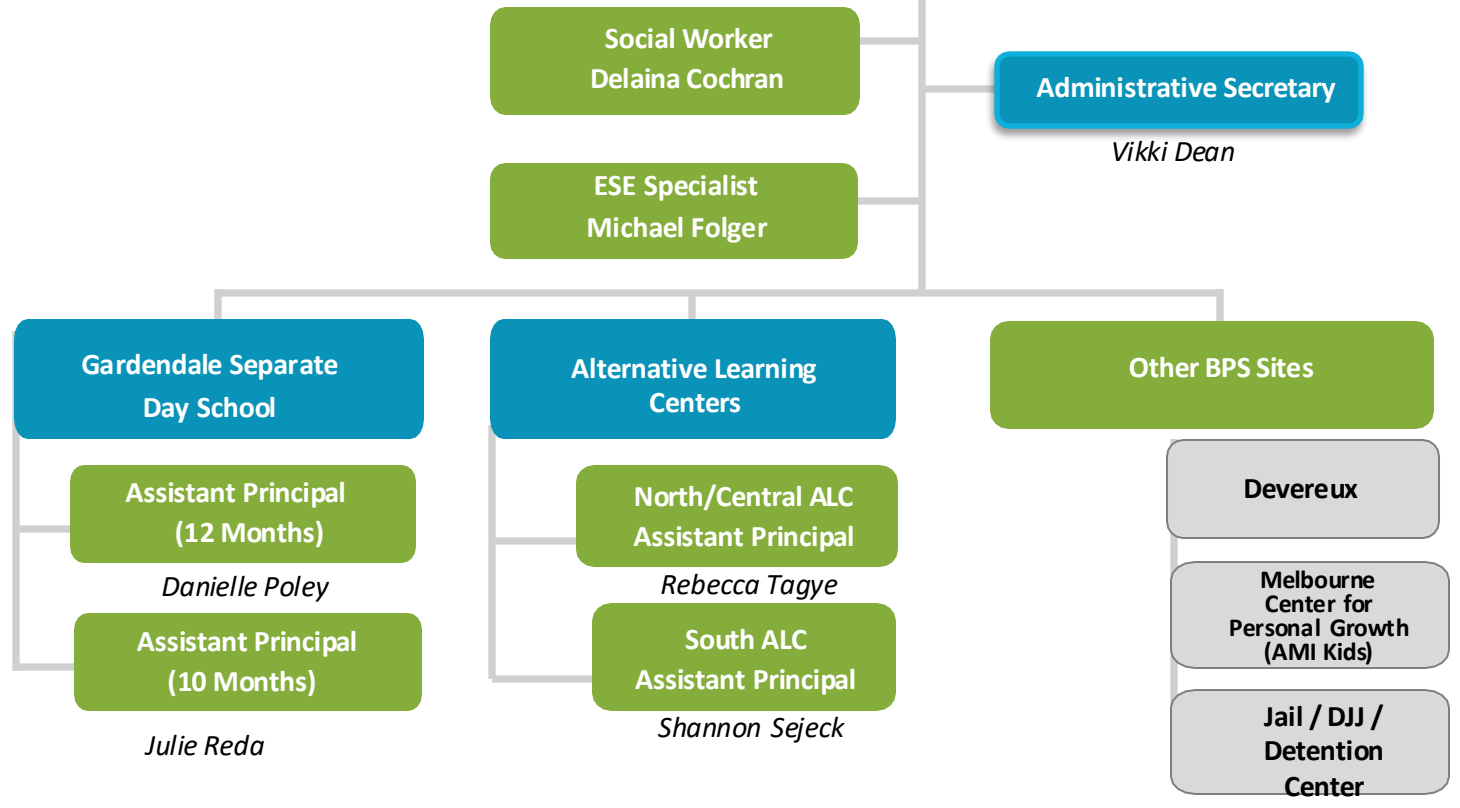
CHIEF OF SCHOOLS

Alternative Site



Programs (0089/1014/1017/1018/1025/1027/1028/9297)

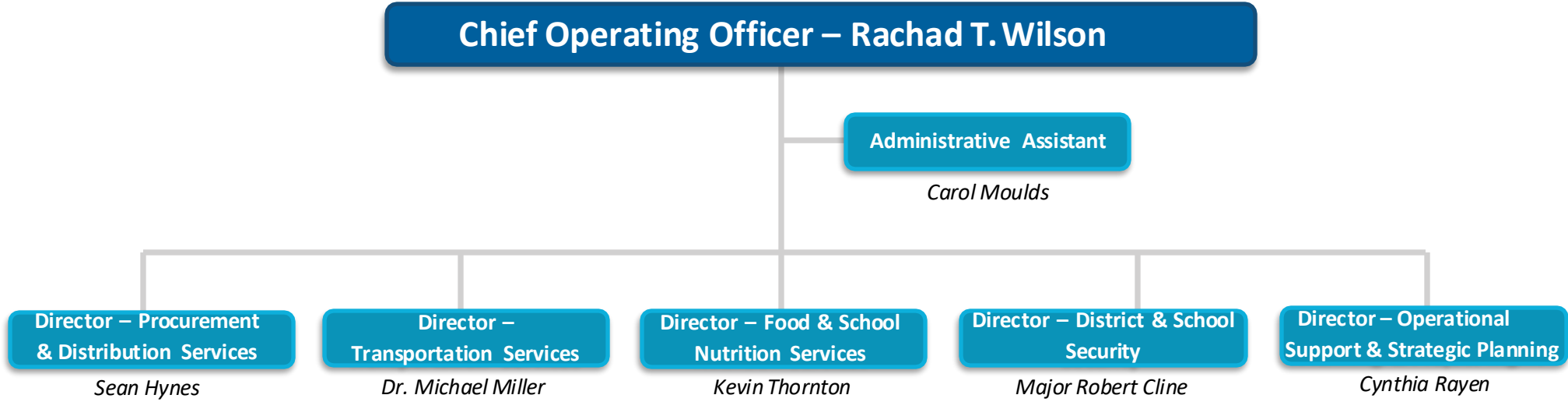
Director – Mary "Misty" Bland



- Direct Level or Higher
- Direct Reporting Level
- Second Reporting Level

DISTRICT OPERATIONS

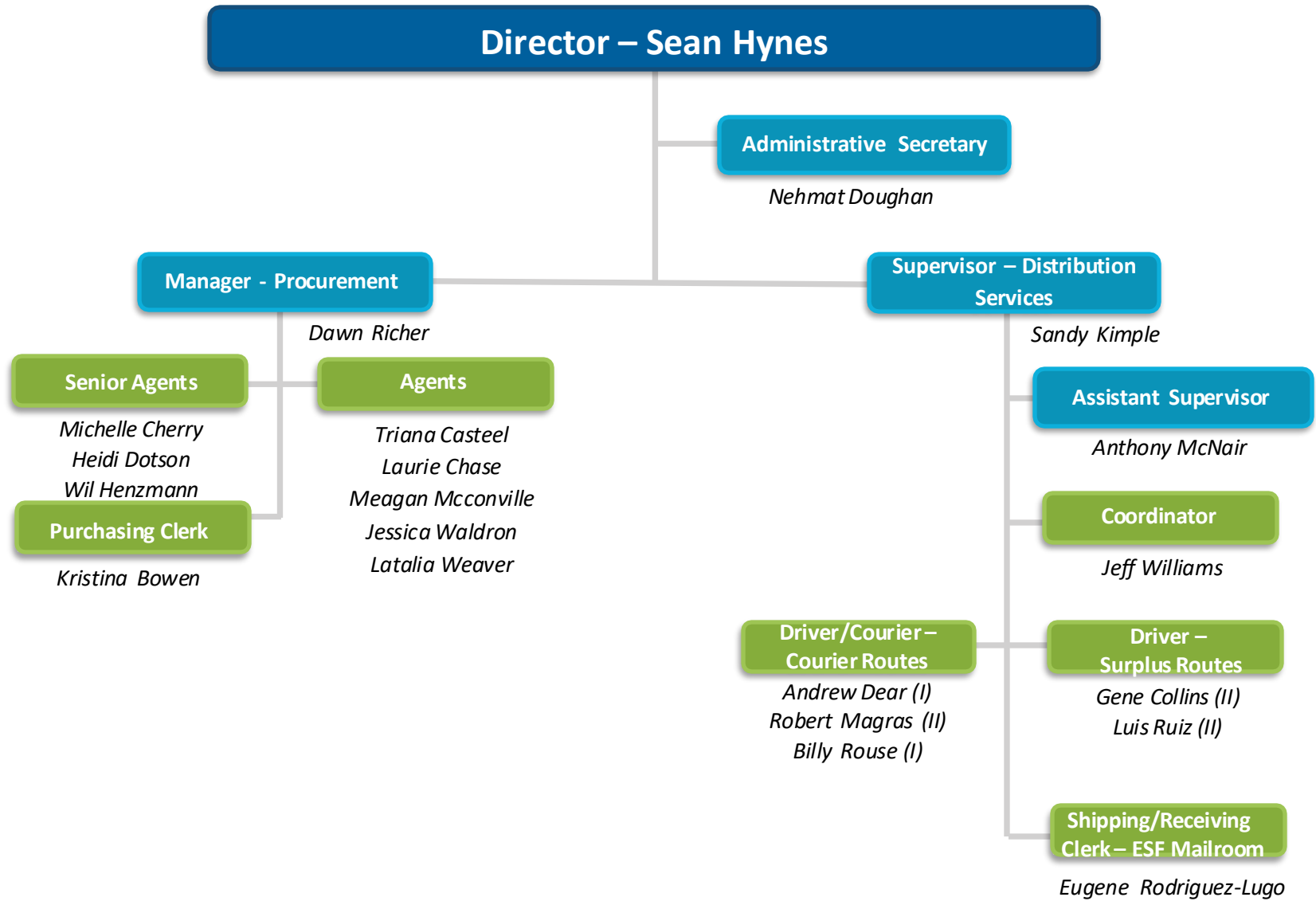
(9600)



- Direct Level or Higher
- Direct Reporting Level
- Second Reporting Level

DISTRICT OPERATIONS

Procurement & Distribution Services (9680)



- Direct Level or Higher
- Direct Reporting Level
- Second Reporting Level

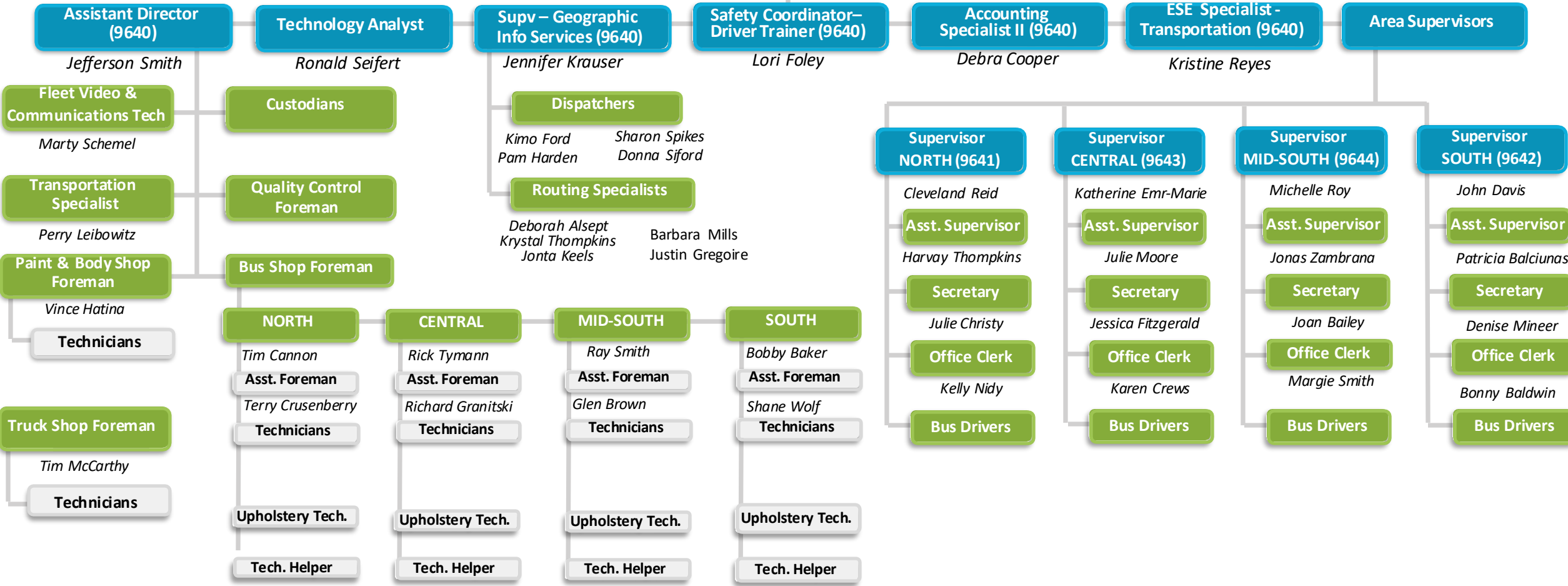
DISTRICT OPERATIONS

Transportation Services (9640-44)



Director – Dr. Michael Miller

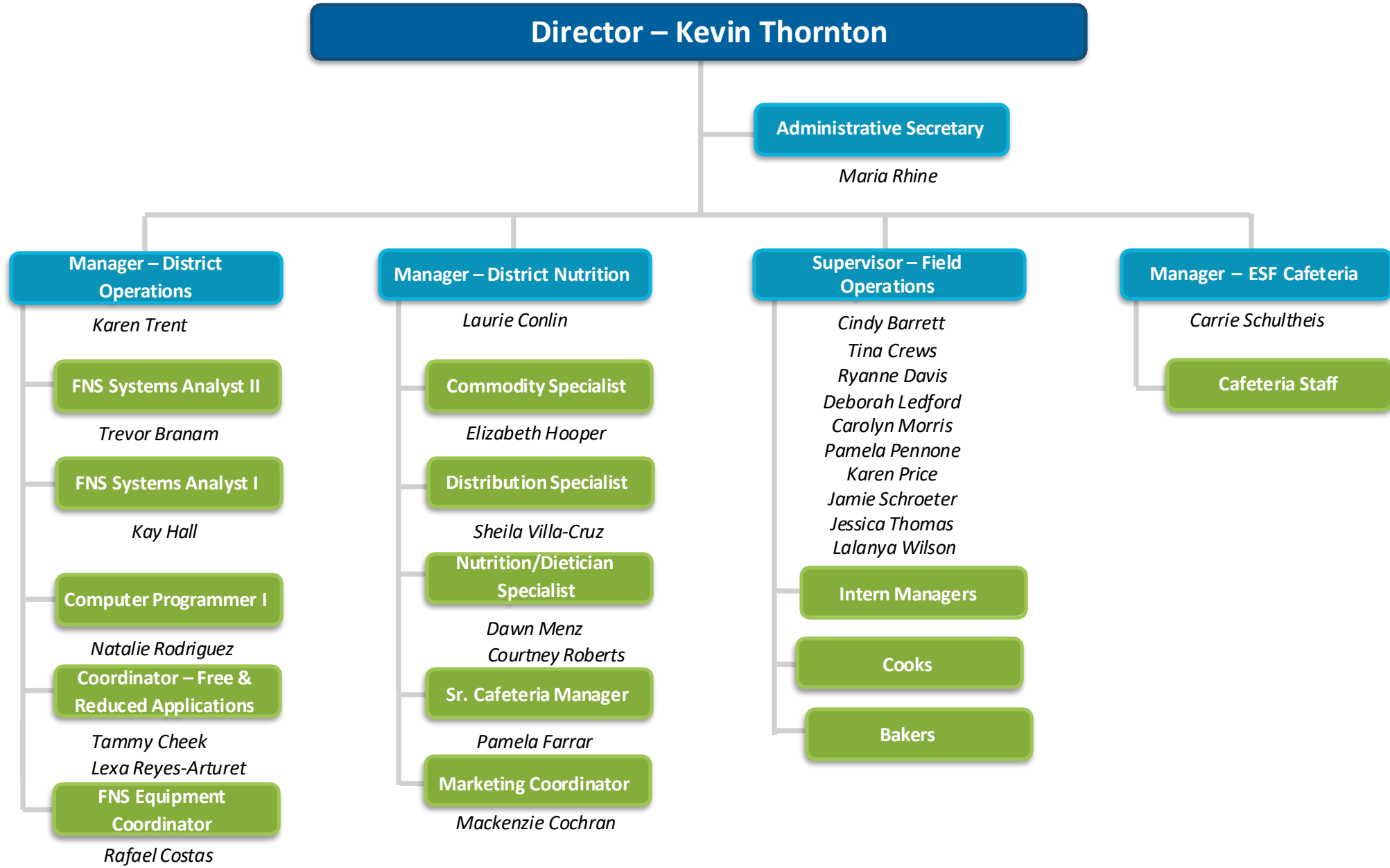
Clerk Typist (9640) Administrative Secretary (9640)
TBD *Marie Jingle Soetidio*



- Direct Level or Higher
- Direct Reporting Level
- Second Reporting Level

DISTRICT OPERATIONS

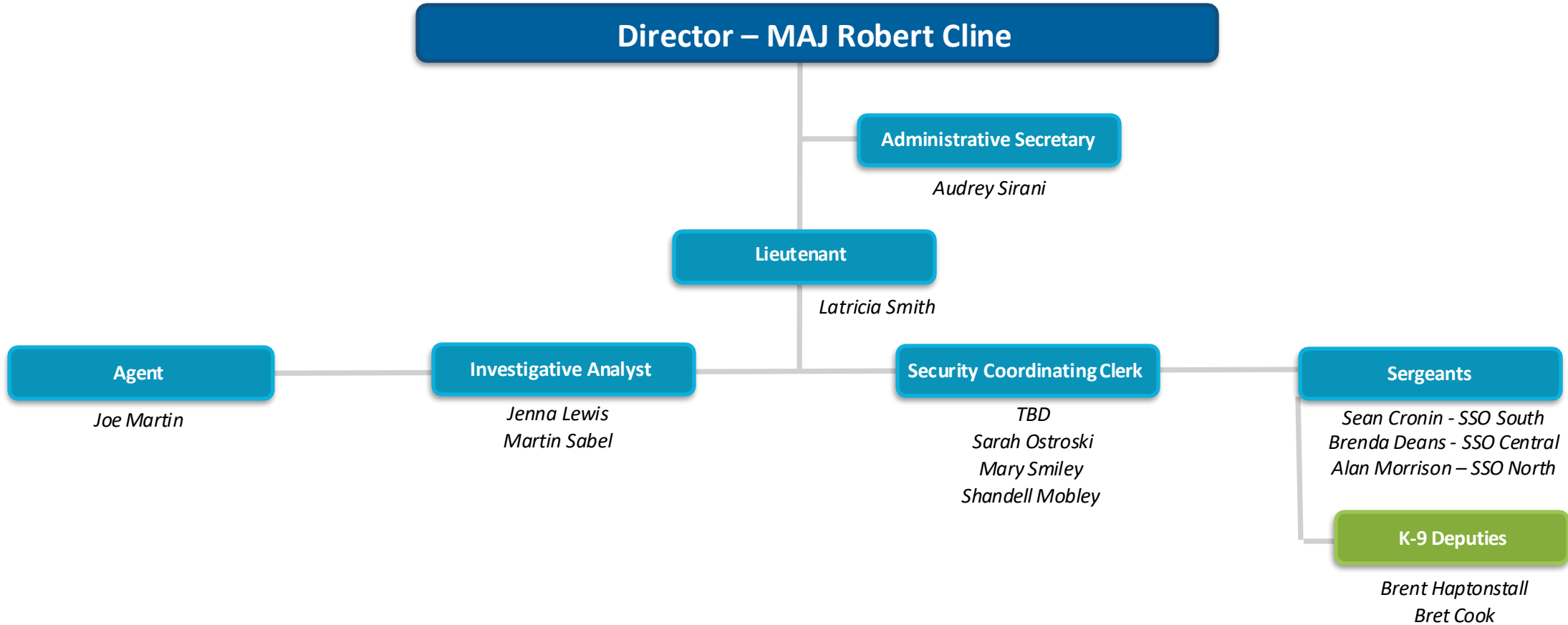
Food & Nutrition Services (9660)



- Direct Level or Higher
- Direct Reporting Level
- Second Reporting Level

DISTRICT OPERATIONS

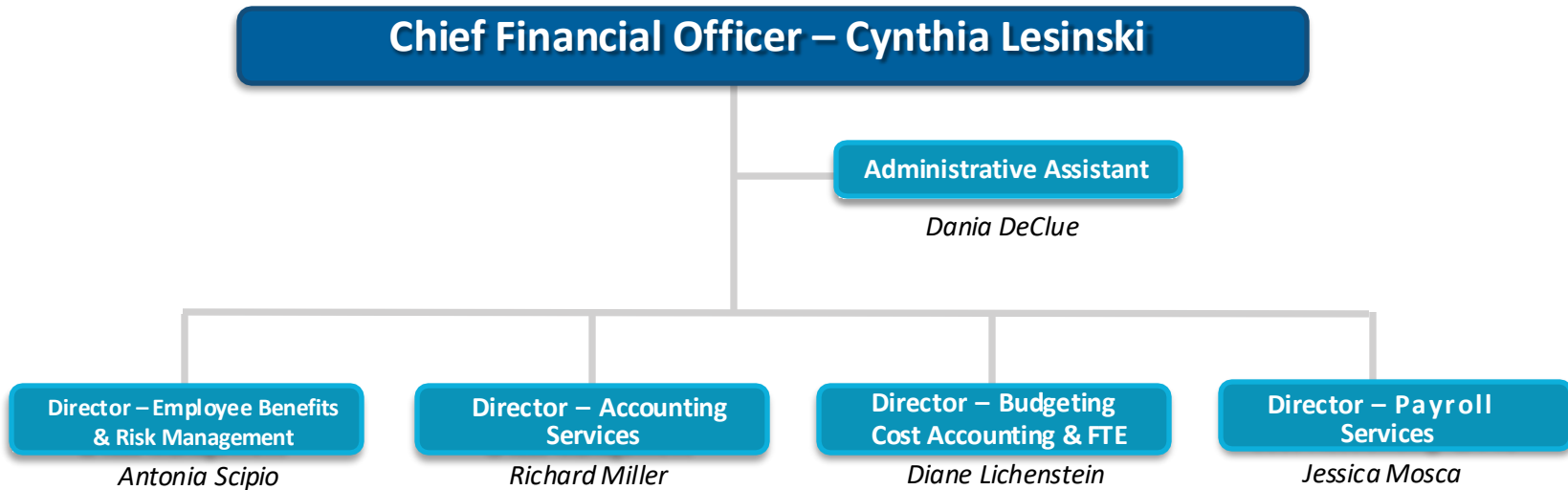
District & School Security (9670)



- Direct Level or Higher
- Direct Reporting Level
- Second Reporting Level

FINANCIAL SERVICES

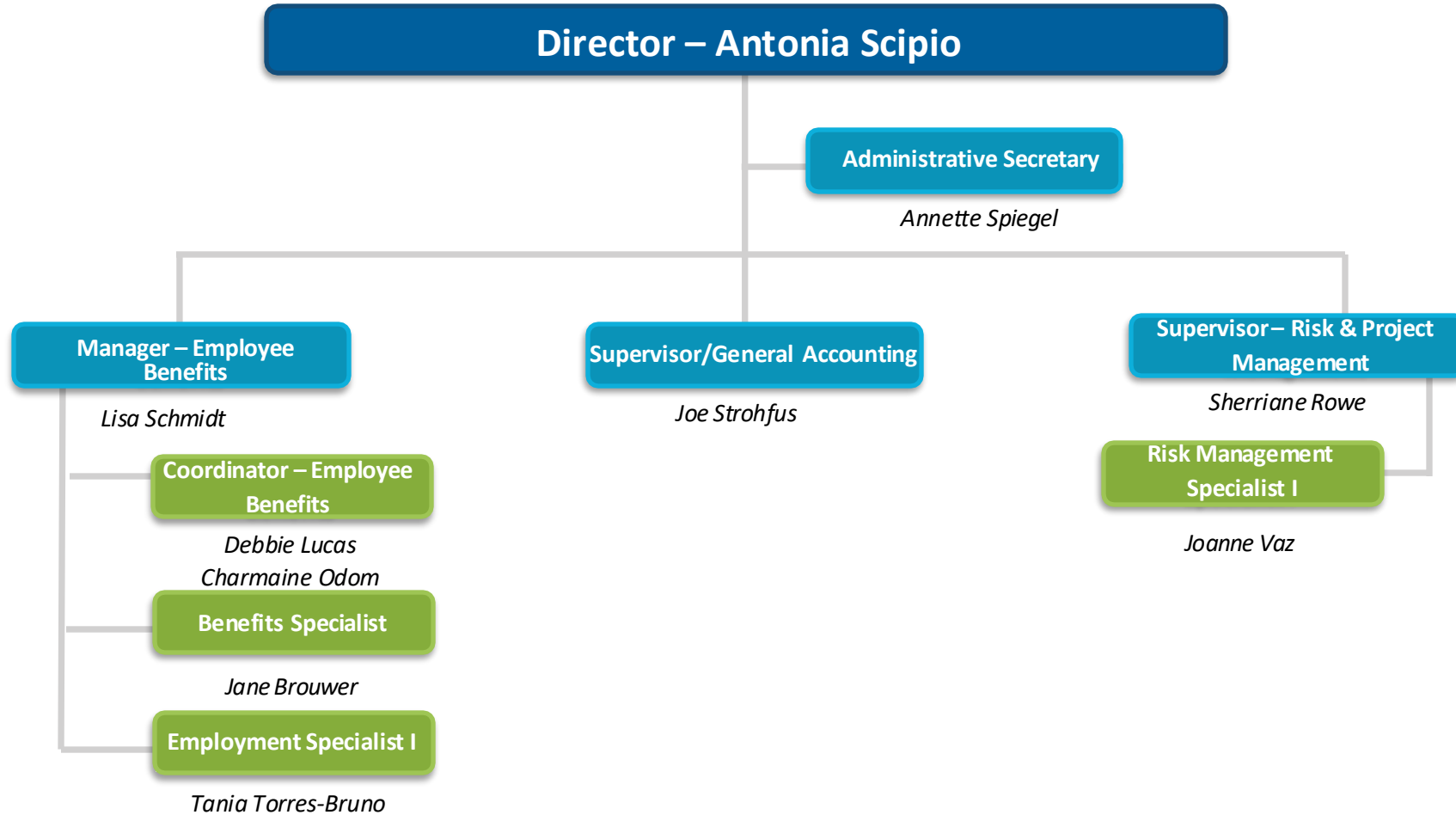
(9300)



- Direct Level or Higher
- Direct Reporting Level
- Second Reporting Level

FINANCIAL SERVICES

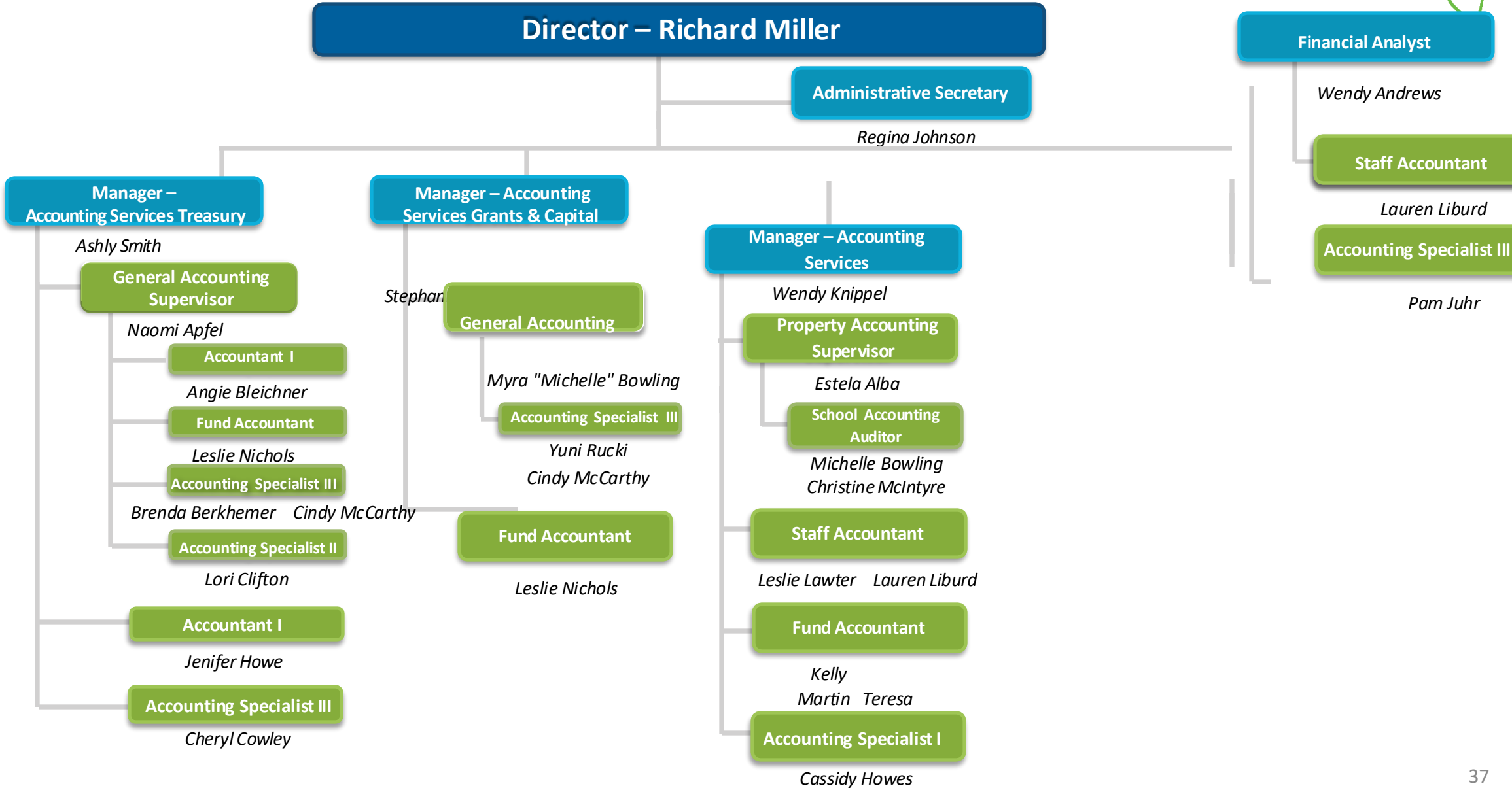
Employee Benefits & Risk Management (9470/9850/9855)



- Direct Level or Higher
- Direct Reporting Level
- Second Reporting Level

FINANCIAL SERVICES

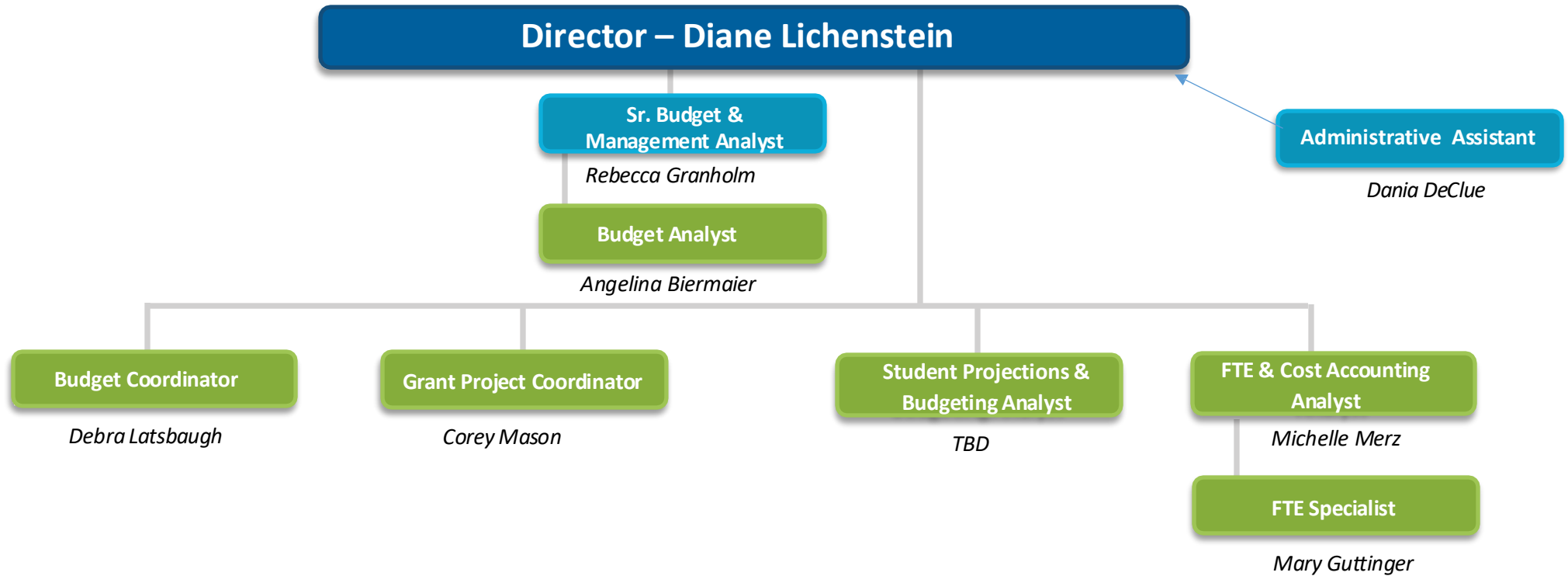
Accounting Services (9310)



- Direct Level or Higher
- Direct Reporting Level
- Second Reporting Level

FINANCIAL SERVICES

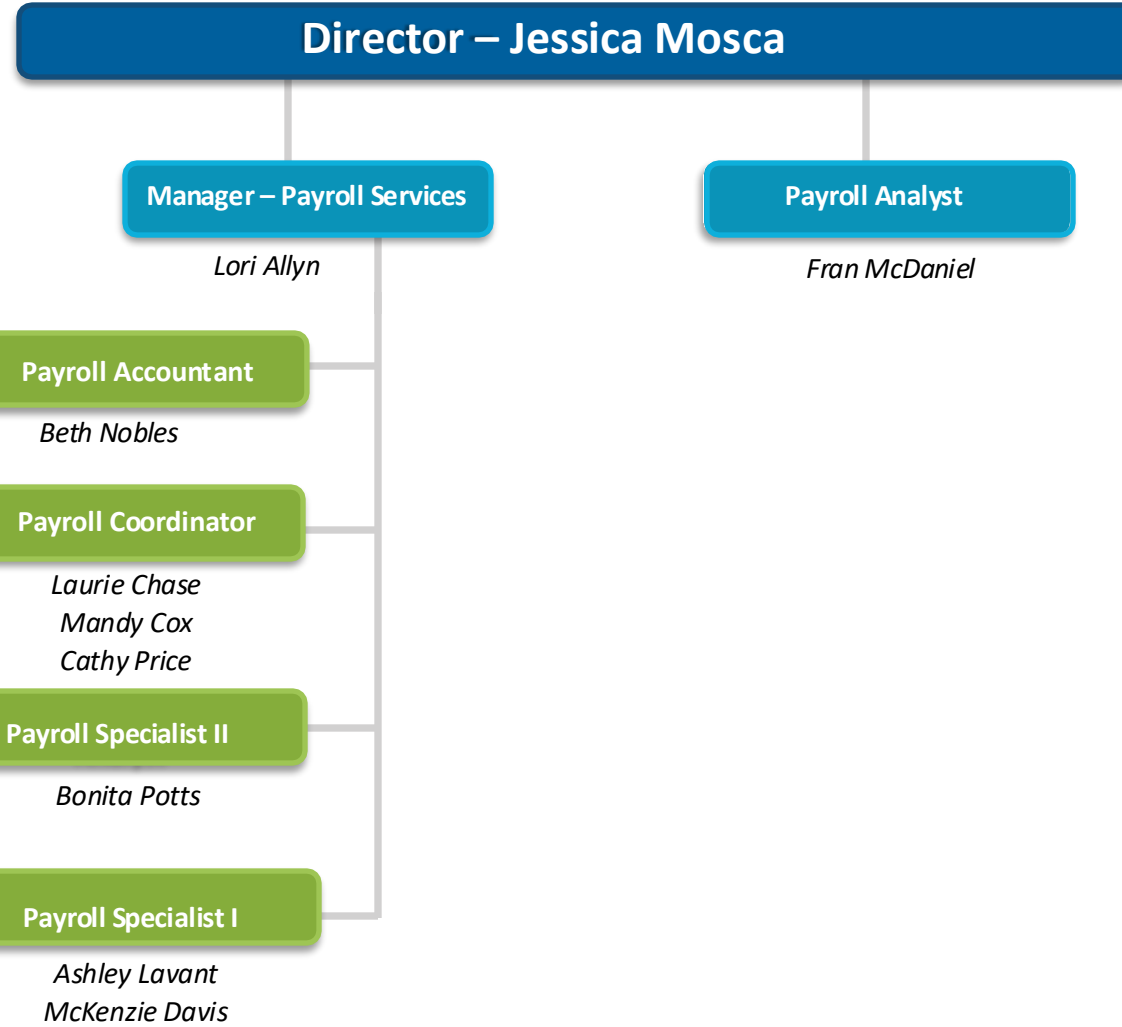
Budgeting, Cost Accounting & FTE (9330)



- Direct Level or Higher
- Direct Reporting Level
- Second Reporting Level

FINANCIAL SERVICES

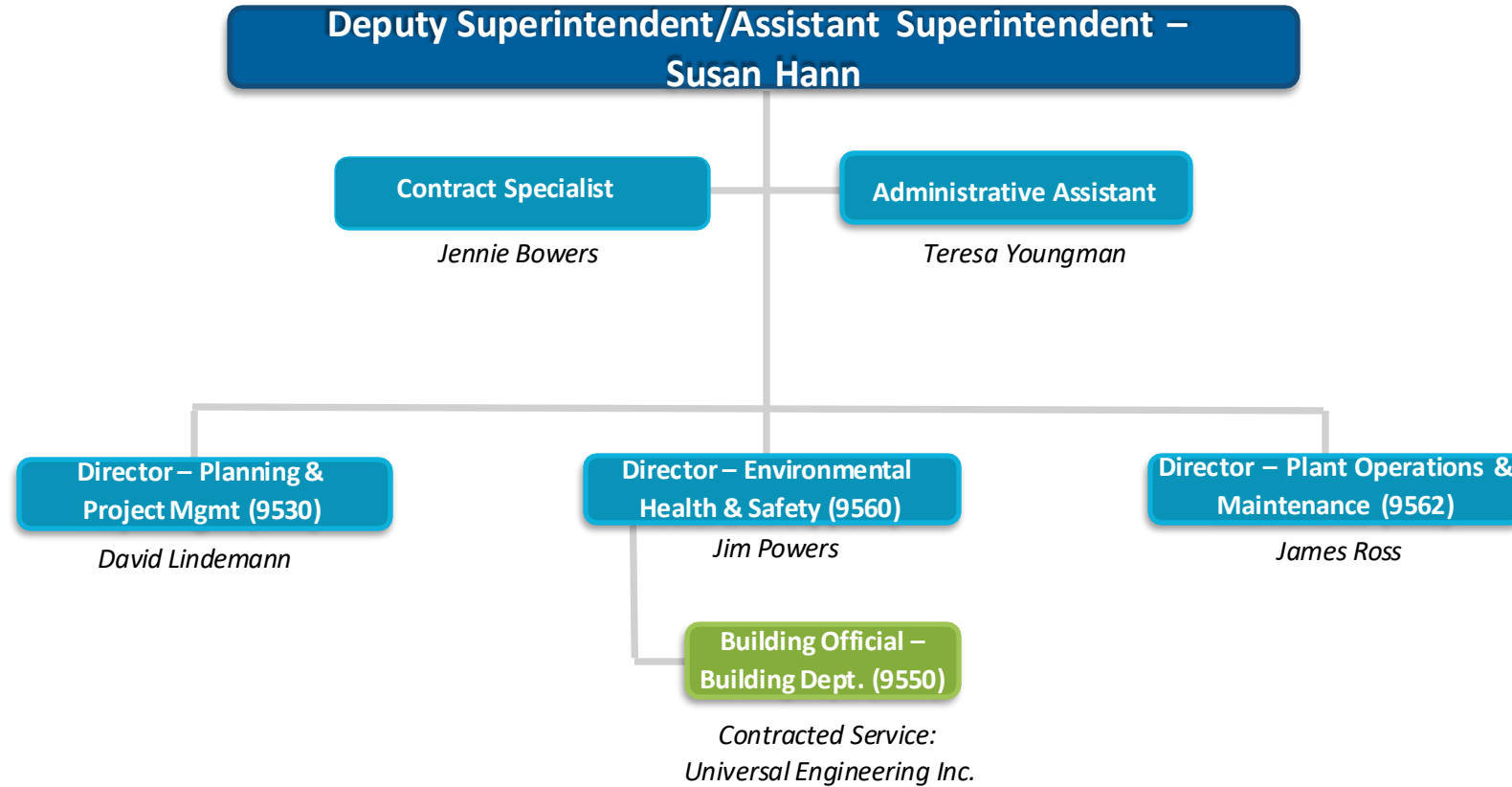
Payroll Services
(9310)



- Direct Level or Higher
- Direct Reporting Level
- Second Reporting Level

FACILITIES SERVICES

(9500)



- Direct Level or Higher
- Direct Reporting Level
- Second Reporting Level

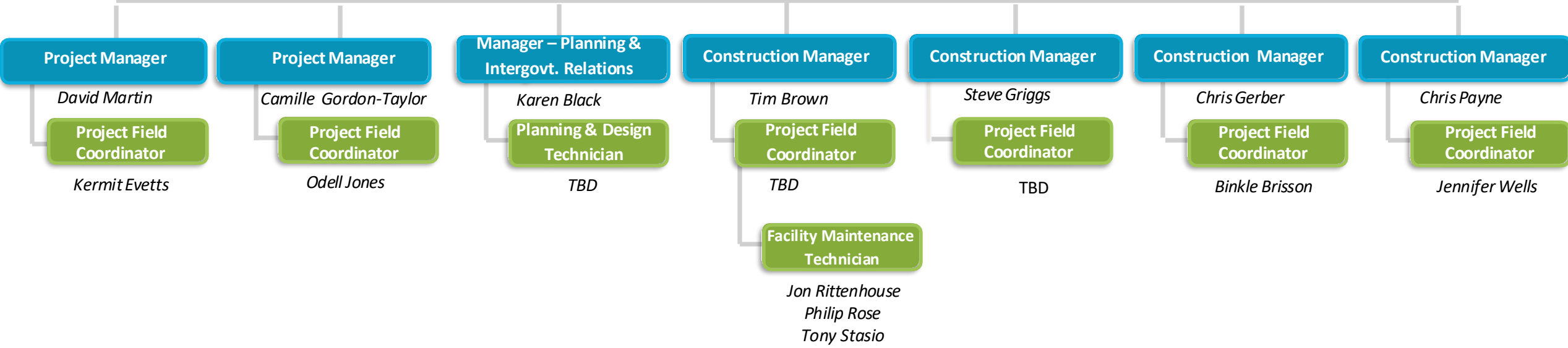
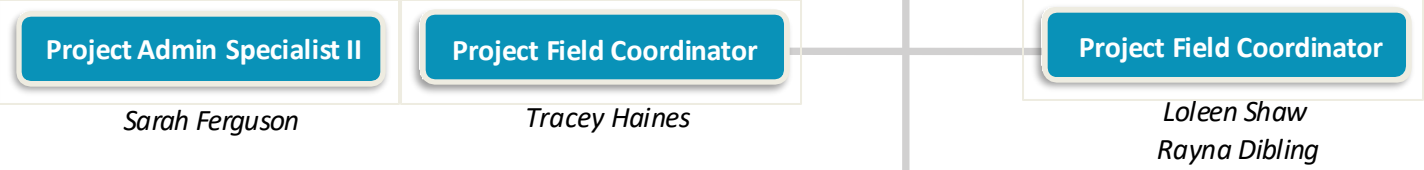
FACILITIES SERVICES

Planning & Project Management

(9530)



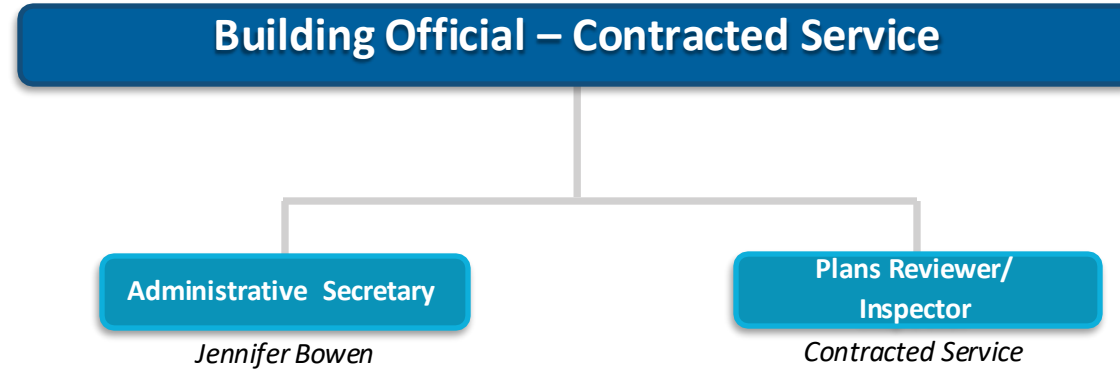
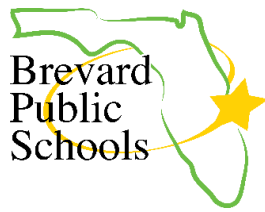
Director – David Lindemann



- Direct Level or Higher
- Direct Reporting Level
- Second Reporting Level

FACILITIES SERVICES

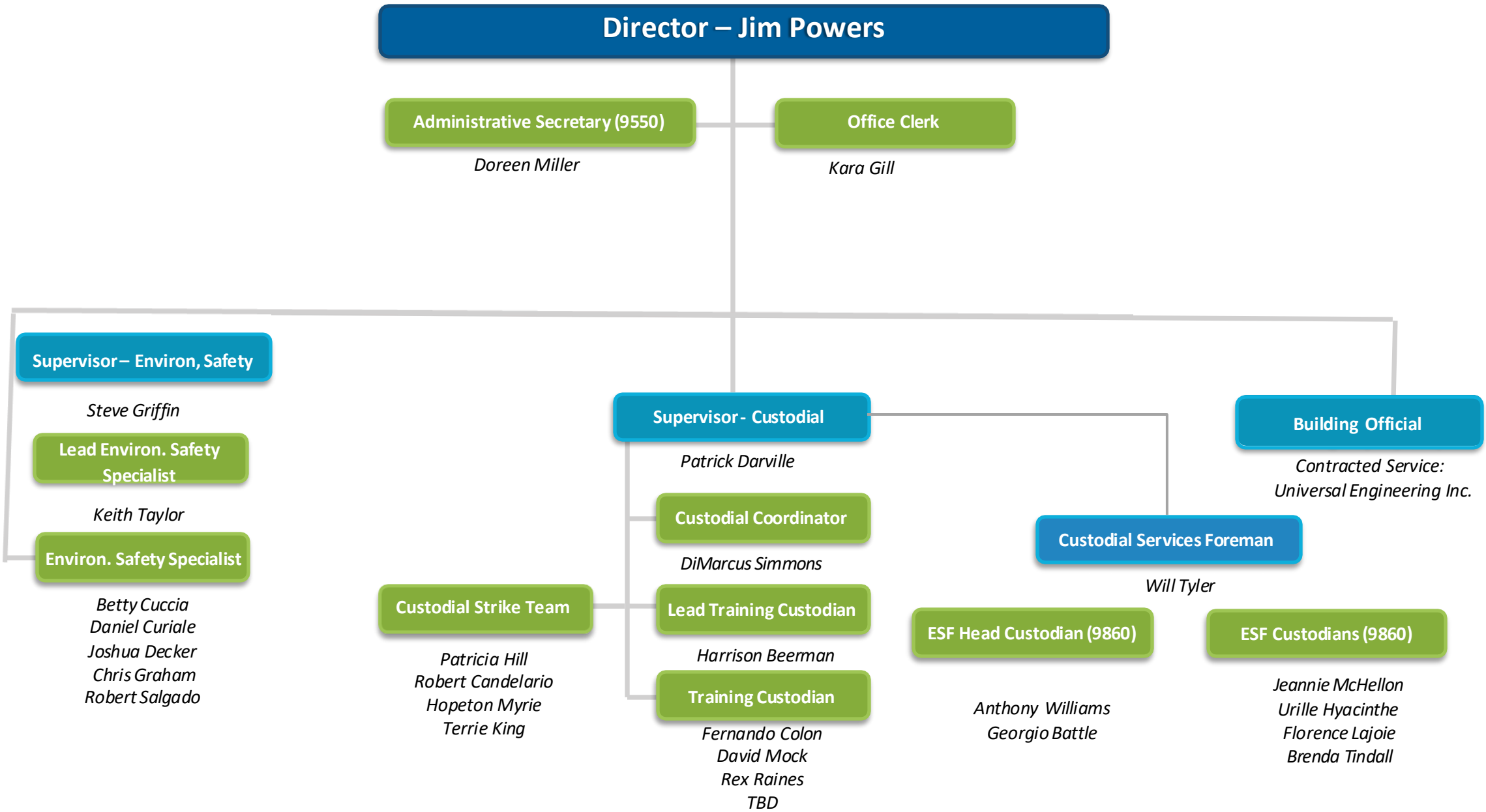
Building Department (9550)



- Director
- Non Bargaining
- 1010

FACILITIES SERVICES

*Environmental Health & Safety/Central Custodial Services/Code Compliance
(9560 & 9550)*



- Direct Level or Higher
- Direct Reporting Level
- Second Reporting Level

FACILITIES SERVICES

Plant Operations & Maintenance (9562)



Director – James Ross

Administrative Secretary

Joan Bailey

North Area Service Team

- Carpenters
- Plumbing
- Electrician
- Roofing
- Fire Alarm, Clocks, Bells & Intercoms
- Scoreboards & Signage
- FMT's
- Site Mowing
- HVAC Mechanics
- Sound Systems
- Painting

*Kevin Batchelor
Herb Johnson*

Central Area Service Team

- Carpenters
- Locksmiths
- Electrician
- Masonry
- Fire Alarm, Clocks, Bells & Intercoms
- Painting
- Floor Covering
- Plumbing
- FMT's
- Scoreboards & Signage
- HVAC Mechanics
- Site Mowing
- Kitchen Equipment
- Sound Systems

*Steve Griggs
Al Mixon*

South Area Service Team

- Carpenters
- Locksmiths
- Electrician
- Masonry
- Fire Alarm, Clocks, Bells & Intercoms
- Painting
- Floor Covering
- Plumbing
- FMT's
- Scoreboards & Signage
- HVAC Mechanics
- Site Mowing
- Kitchen Equipment

*George Cook
Robert Sutton*

Building Automation, Chiller & Boilers

- Boilers
- Central Temp Controls
- Central Chillers
- Filters
- Central Heating
- Lighting Controls

Sean Click

County Wide Services

- Facility Assessments

Tony Troisi

Energy Conservation

- Conservation Initiatives
- ERC Support
- Recycling & Trash Services
- Utility Consumption

James Aiani

Maintenance Coordinator

- Projects
- PM's

Richard Vogt

Work Control

- Compactors
- Kitchen Refrigeration
- Contracts & Bids
- Swimming Pools
- Customer Service
- Accounting Services
- Elevators

Robert Wiebel

Ground Services

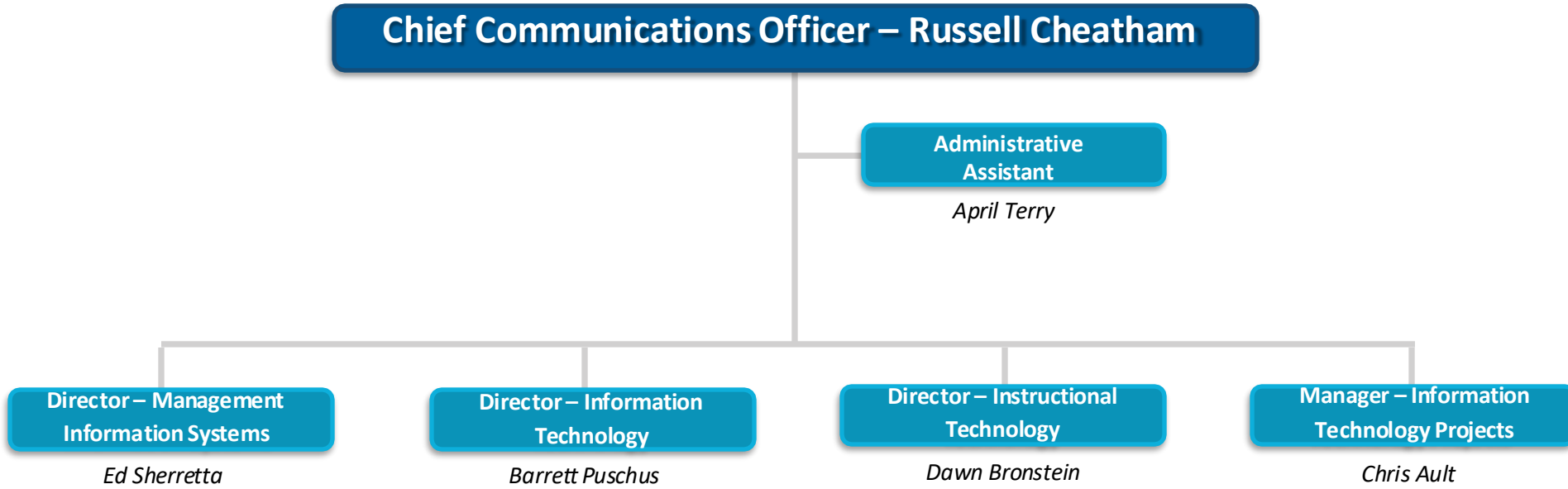
- Asphalt
- Playgrounds
- Athletic Fields
- Site Mowing
- Drainage Repair
- Tree Trimming
- Irrigation

Matt Nolle

- Direct Level or Higher
- Direct Reporting Level
- Second Reporting Level

EDUCATIONAL TECHNOLOGY

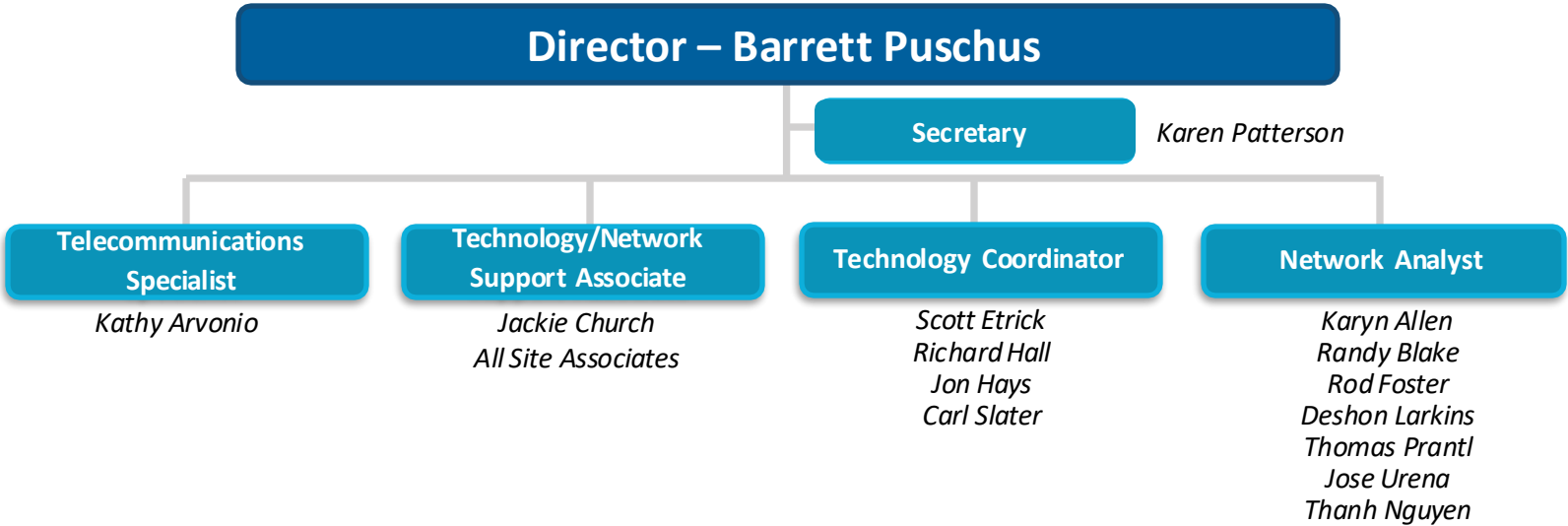
(9720/9721/9722/9723/9811)



- Direct Level or Higher
- Direct Reporting Level
- Second Reporting Level

EDUCATIONAL TECHNOLOGY

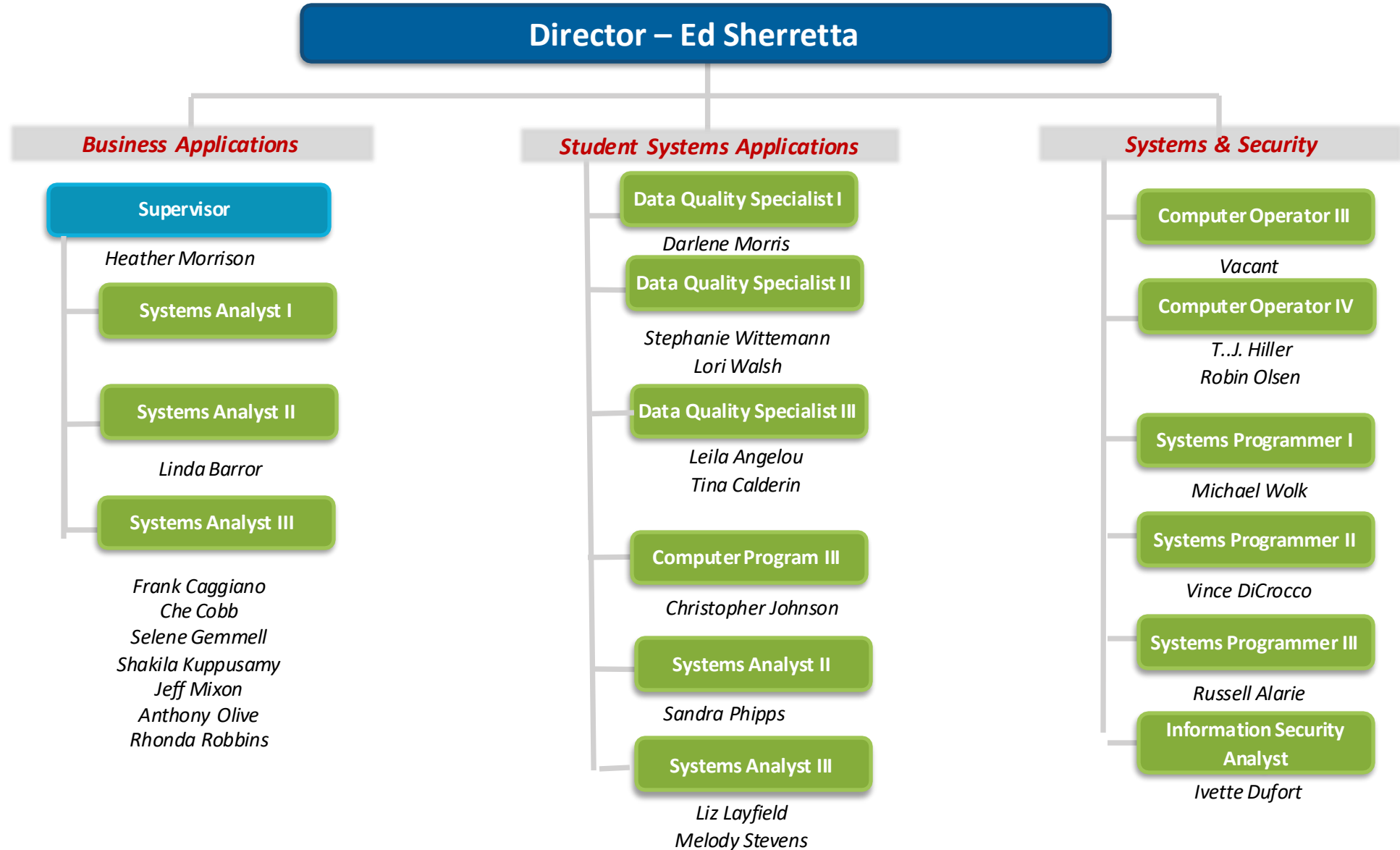
Information System Services (9721)



- Direct Level or Higher
- Direct Reporting Level
- Second Reporting Level

EDUCATIONAL TECHNOLOGY

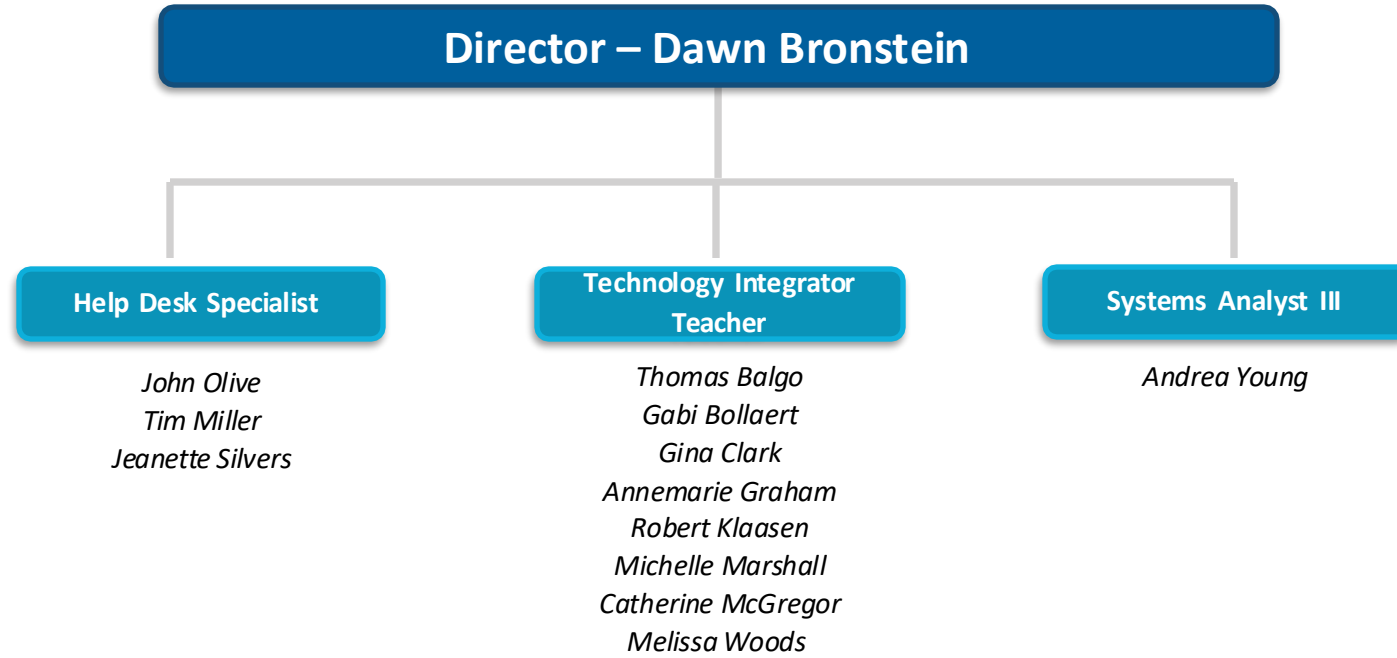
Management Information Systems (9722)



- Direct Level or Higher
- Direct Reporting Level
- Second Reporting Level

EDUCATIONAL TECHNOLOGY

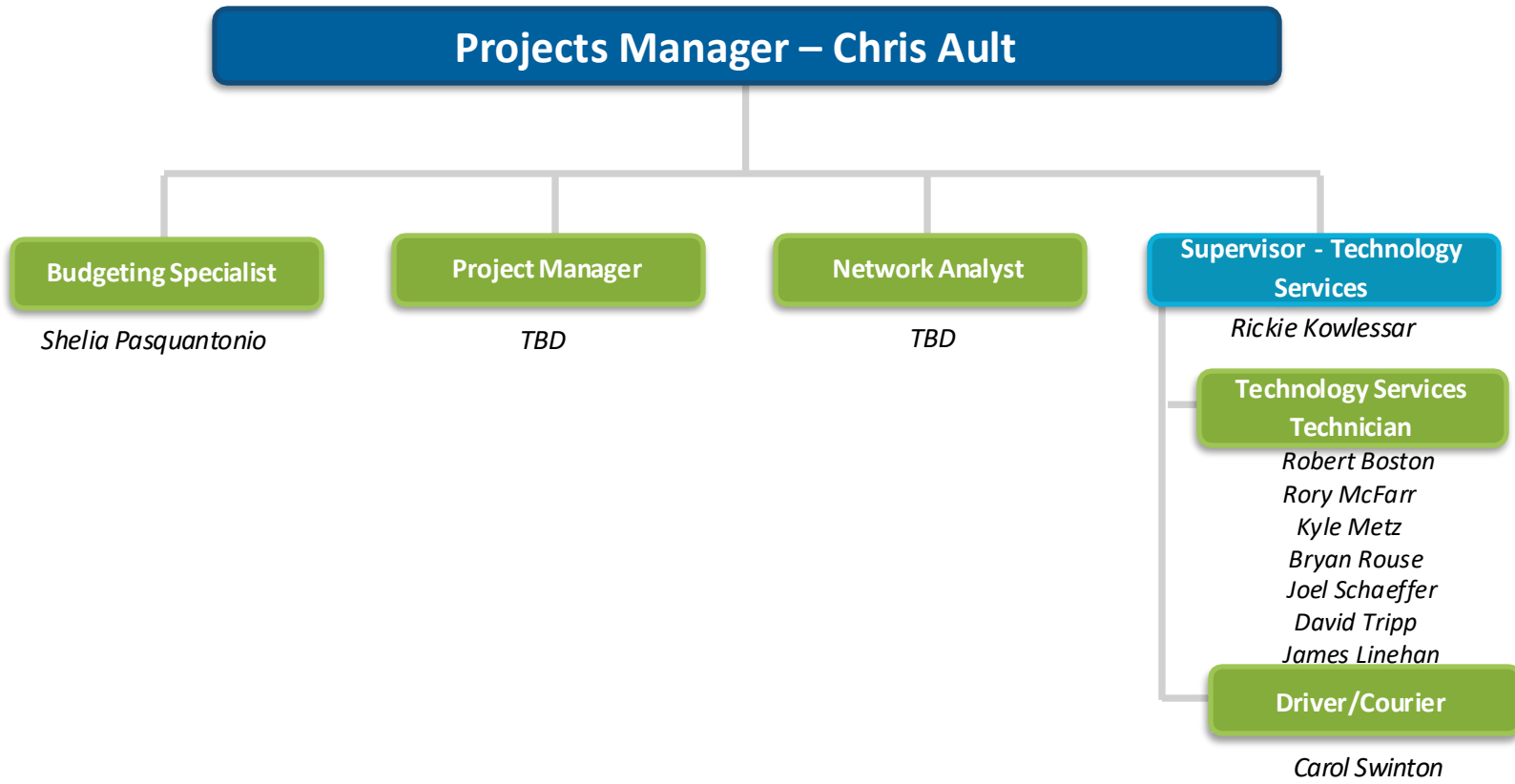
Instructional Technology (9811)



- Direct Level or Higher
- Direct Reporting Level
- Second Reporting Level

EDUCATIONAL TECHNOLOGY

Technology Support Services (9723)



- Direct Level or Higher
- Direct Reporting Level
- Second Reporting Level

GOVERNMENT & COMMUNITY RELATIONS

(Depts. 9122, 9123)

