

Industry Certification Results 2017- 2018



**Brevard Public Schools
Mark W. Mullins, Ed.D., Superintendent**

SCHOOL BOARD OF BREVARD COUNTY

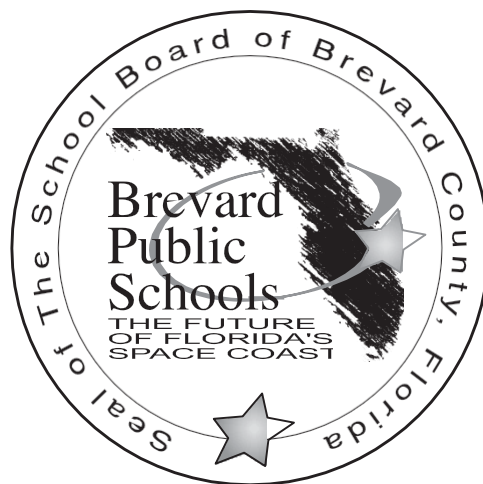
Educational Services Facility
2700 Judge Fran Jamieson Way
Viera, FL 32940-6601

SCHOOL BOARD MEMBERS

Tina Descovich, Chairman
Matt Susin, Vice Chairman
Misty Belford
Katy Campbell
Cheryl McDougall

SUPERINTENDENT

Mark W. Mullins, Ed.D.



SECONDARY LEADING & LEARNING

Dr. Stephanie Soliven
Assistant Superintendent

OFFICE OF CAREER & TECHNICAL EDUCATION

Janice Scholz
Director

Table of Contents

Introduction	1
Industry Certification Results; 7 Year Summary	3
Industry Certification District Results	7
Industry Certification Results by High School	13
Astronaut High School	15
Bayside High School	16
Cocoa Beach Jr./Sr. High School	17
Cocoa High School	18
Eau Gallie High School	19
Edgewood Jr./Sr. High School	20
Heritage High School	21
Melbourne High School	22
Merritt Island High School	23
Palm Bay High School	24
Rockledge High School	25
Satellite High School	26
Space Coast Jr./Sr. High School	27
Titusville High School	28
Viera High School	29
West Shore High School	30
AMI and Odyssey Charter	31
Industry Certification Results By Middle School	33
Central	35
Cocoa	36
Cocoa Beach Jr/Sr Middle School	37
DeLaura	38
Hoover	39
Jackson	40
Jefferson	41
Johnson	42
Kennedy	43
Madison	44
McNair	45
Space Coast	46
Stone	47
Southwest	48
Industry Certification Results by Assessment High School	49
Industry Certification Results by Assessment Middle/Jr School	59
Industry Certification Results by Program High School	63
Industry Certification Results by Program Middle/Jr School	73
Industry Certification Appendix	77

This page intentionally left blank.

Introduction

Today's educational environment is heavily focused on accountability, standards and assessment. At the same time, industry is seeking assurances that job seekers have the skills required to fill their openings. At the local, state and federal levels, CTE programs are being tasked with providing students with credentials and certifications which are recognized and valued by our business and industry partners. Having a strong connection to industry, career and technical education has long understood the importance of industry recognized credential and certifications.

BPS Graduation Requirement

To ensure that every BPS graduate is postsecondary and/or workforce ready, students are required to complete a program of study which includes a minimum of 3 credits in one of the following areas:

- Approved dual enrollment, AP, IB, AICE or approved Honors Courses
- or**
- Sequential CTE program of study resulting in a credential endorsed by a national, state or local industry

State Requirement – CAPE Academies

At the state level, Florida Statutes require that career and professional academies be coordinated with the appropriate industry indicating that all components of the program are relevant and appropriate to prepare the student for further education and for employment in that industry. Florida Statutes further define that the State Board of Education, together with the Workforce Florida, Inc., will develop and adopt rules for implementing an industry certification process, based upon the highest available national standards for specific industry certification, to ensure student skill proficiency and to address emerging labor market and industry trends.

Florida Statutes require that all career-themed courses offered by a secondary school must lead to industry certification or college credit. Statutes further require that if the passage rate on an industry certification examination falls below 50%, the 3-year strategic plan must be amended to include specific strategies to improve the passage rate of the career-themed course.

Each school district shall make available digital materials, CAPE Digital Tools certificates, and CAPE industry certifications for students in prekindergarten through grade 12. Industry certifications that have a statewide articulation agreement approved by the State Board of Education may substitute the certification for up to two mathematics credits, except for Algebra 1 and Geometry and for one science credit, except for Biology 1. Industry certifications earned in information technology that is identified on the CAPE Industry Certification Funding List satisfy the online graduation requirement.

State Requirement – School Grade and Diploma Designations

Florida Statutes requires a portion of the high school and middle school grade be determined by students' attainment of industry certifications as an indication of college and career ready. Florida Statutes further expand the requirements for CTE industry certification by including student attainment of CTE industry certifications as one of the two Standard High School Diploma Designations.

Federal Requirements

At the federal level, the Carl D. Perkins Career and Technical Education Act was reauthorized in 2006 and required student attainment of career and technical skill proficiencies, including student achievement on technical assessments that are aligned with industry-recognized standards. They are designed to measure the extent CTE concentrators (3 credits in the same CTE program) are leaving high school with validated technical skills. The Florida DOE approves the Technical Skill Attainment List using the following criteria: requires a minimum of 150 hours' instruction, is occupationally specific, is a State or federally regulated professional license, and the certifying agency is accredited.

In response to the federal requirements, future district Perkins Act federal funding to BPS includes performance measures, targets and potential sanctions regarding Technical Skill Attainment for program concentrators. The SY 2016-2017 targets for BPS, established by the Florida DOE, was 93.47%.

In addition to the local, state and federal requirements for student industry certification, teachers and administrators can use assessment results to learn about student's skills as well as learn about the effectiveness of instruction and then apply that to instructional improvements. Assessment can be one of the most effective tools for increasing student achievement. By using assessment data for instructional purposes, teachers can improve program curriculum, identify instructional needs and maintain a continuous improvement process.

Focused on the new vision of Career and Technical Education, assessments are to be utilized for CTE students as they participate and/or complete their technical program of study. Assessments, while required at the federal, state and district levels, measure student understanding of both the knowledge and skills that are the foundation of the CTE program.

It is imperative that teachers and administrators maintain a positive perception of the value of technical skill attainment. Not only does it meet new local, state and federal requirements for CTE programs, assessments can provide a continuous improvement model for CTE instruction. Industry certifications can also provide business and industry with the assurance that CTE concentrators have the skills required to fill their openings; a win-win situation for all.

Industry Certification Results Seven Year Summary



This page intentionally left blank.

2017-2018 Industry Certification Results

Past 7 Years

Year	# Students Identified	# Participants	# Passing	# Failing	# Completing Participants	% Participants	% Passing	% Failing	Cost of Assessments
2017-18	7,406	7,406	4,489	1,908	6,397	100%	69%	31%	\$334,169.66
2016-17	6,261	6,261	4,702	1,561	6,261	100%	75%	25%	\$323,783.20
2015-16	5,883	5,844	3,900	1,326	5,226	99%	75%	25%	\$366,515.06
2014-15	5,517	5,419	3,395	1,126	4,521	98%	75%	25%	\$300,504.16
2013-14	4,760	4,737	3,180	942	4,122	100%	77%	23%	\$265,949.13
2012-13	3,716	3,513	2,447	780	3,227	95%	76%	24%	\$224,469.77
2011-12	3,101	3,051	1,859	718	2,577	98%	72%	28%	\$147,739.39

This page intentionally left blank.

Industry Certification District Results



This page intentionally left blank.

2017-18 District High School Industry Certification

2017-18 District Industry Certification																2017-18 Senior Industry Certification Statistics	
School	# Students Identified	# Participants	# In Progress	# Passing	# Failing	# Completing Participants	Funding Weights	% Participants	% Passing	% Failing	% In Progress	% Completing Participants	Cost of Assessments & Test Prep Used	Potential Bonus FTE Calculation	Potential CAPE Funding \$	Unduplicated Count of Seniors with Industry Certifications	# Industry Certification Earned by Seniors 2017-18
AHS	558	558	124	315	119	434		100%	73%	27%	22%	78%	\$ 20,891.50	13.8	\$ 57,382.15	98	148
BHS	712	712	81	526	105	631		100%	83%	17%	11%	89%	\$ 27,242.83	50.3	\$ 209,153.78	201	361
CBHS	99	99	7	48	44	92		100%	52%	48%	7%	93%	\$ 5,088.50	9.2	\$ 38,254.77	16	16
CHS	341	341	76	183	82	265		100%	69%	31%	22%	78%	\$ 17,655.99	16.6	\$ 69,024.91	101	131
EGHS	629	629	142	243	244	487		100%	50%	50%	23%	77%	\$ 21,751.19	26.3	\$ 109,358.74	99	147
EHS	168	168	0	137	31	168		100%	82%	18%	0%	100%	\$ 4,505.50	13.7	\$ 56,966.34	26	58
HHS	843	843	117	457	269	726		100%	63%	37%	14%	86%	\$ 56,370.86	45.8	\$ 190,442.21	182	230
MHS	760	760	59	534	167	701		100%	76%	24%	8%	92%	\$ 26,290.33	55.2	\$ 229,528.60	253	361
MIHS	357	357	93	215	49	264		100%	81%	19%	26%	74%	\$ 14,945.35	28.7	\$ 119,338.24	141	228
PBHS	368	368	17	226	125	351		100%	64%	36%	5%	95%	\$ 18,703.83	13.7	\$ 56,966.34	126	193
RHS	488	488	5	339	144	483		100%	70%	30%	1%	99%	\$ 17,439.10	21.8	\$ 90,647.17	122	180
SHS	329	329	64	169	96	265		100%	64%	36%	19%	81%	\$ 13,932.54	19.0	\$ 79,004.41	95	143
SCHS	340	340	140	113	87	200		100%	57%	44%	41%	59%	\$ 18,729.33	21.1	\$ 87,736.48	70	130
THS	716	716	49	521	146	667		100%	78%	22%	7%	93%	\$ 26,979.30	49.1	\$ 204,164.03	157	302
VHS	646	646	28	430	188	618		100%	70%	30%	4%	96%	\$ 41,402.50	47.5	\$ 197,511.03	200	401
WSHS	24	24	0	19	5	24		100%	79%	21%	0%	100%	\$ 1,079.00	1.9	\$ 7,900.44	6	6
AMI/Odyssey	28	28	7	14	7	21		100%	67%	33%	25%	75%	\$ 1,162.00	2.4	\$ 10,083.46	7	10
	7,406	7,406	1,009	4,489	1,908	6,397		100%	69%	31%	14%	86%	\$334,169.66	436.1	\$ 1,813,463.09	1,900	3,045

This page intentionally left blank.

2017-18 District Middle School Industry Certification

School	# Participants	# Passing	# Failing	# Completing Participants	Potential CAPE Funding \$	Cost of Assessments & Test Prep Used	Potential Bonus FTE Calculation
CMS - Digital Tools	342	203	139	342	\$ 21,102.49		5.075
CHSMS - Digital Tools	61	59	2	61	\$ 6,133.24		1.475
CBHSMS - Digital Tools	169	89	80	169	\$ 9,251.83		2.225
DMS - Digital Tools	199	106	93	199	\$ 11,019.04		2.650
HMS - Digital Tools	84	40	44	84	\$ 4,158.13		1.000
JAMS - Digital Tools	160	126	34	160	\$ 13,098.10		3.150
JEMS - Digital Tools	115	76	39	115	\$ 7,900.44		1.900
JOMS - Digital Tools	23	18	5	23	\$ 1,871.16		0.450
KMS - Digital Tools	76	70	6	76	\$ 7,276.72		1.750
MAMS - Digital Tools	110	53	57	110	\$ 5,509.52		1.325
MCMS - Digital Tools	0	0	0	0	\$ -		0.000
SCHSMS - Digital Tools	84	57	27	84	\$ 7,172.77		1.425
STMS - Digital Tools	51	12	0	12	\$ 1,247.44		0.300
SWMS - Digital Tools	296	163	133	296	\$ 16,944.37		4.075
Digital Tools	1,770	1,072	659	1731	\$ 112,685.24		26.800
CMS - Certifications	55	35	0	35	\$ 14,553.44		3.500
CHSMS - Certifications	19	11	0	11	\$ 4,573.94		1.100
CBHSMS - Certifications	0	0	0	0	\$ -		0.000
DMS - Certifications	0	0	0	0	\$ -		0.000
HMS - Certifications	63	55	0	55	\$ 22,869.70		5.500
JAMS - Certifications	31	9	0	9	\$ 3,742.31		0.900
JEMS - Certifications	35	13	0	13	\$ 5,405.56		1.300
JOMS - Certifications	16	6	0	6	\$ 2,494.88		0.600
KMS - Certifications	52	49	0	49	\$ 20,374.82		4.900
MAMS - Certifications	22	6	0	6	\$ 2,494.88		0.600
MCMS - Certifications	0	0	0	0	\$ -		0.000
SCHSMS - Certifications	9	3	0	3	\$ 1,247.44		0.300
STMS - Certifications	0	0	0	0	\$ -		0.000
SWMS - Certifications	31	20	1	21	\$ 8,316.25		2.000
Certifications	333	207	1	208	\$ 86,073.23		20.700
District Total	2,103	1,279	660	1,939	\$ 198,758.47	\$ 79,640.00	47.500
Limited to .100 per student					\$ 193,976.62		46.650

This page intentionally left blank.

Industry Certification Results By High School



This page intentionally left blank.

2017-18 Industry Certification Astronaut High School

School	Program	CERT #	Assessment	Teacher of Record	School Grade	# Students Identified	# Participants	# In Progress	# Passing	# Failing	# Completing Participants	Funding Weights	Potential CAPE Funding \$	% Participants	% Passing	% Failing	% In Progress	% Completing Participants	Cost of Assessments & Test Prep Used	Potential Bonus FTE Calculation
AHS	Digital Media/MM	ADOBE021	Adobe: InDesign	Deese	X	43	43	0	10	33	43	0.1	\$ 4,158.13	100%	23%	77%	0%	100%		1.0
AHS	Digital Media/MM	ADOBE022	Adobe: Photoshop	Deese	X	62	62	0	32	30	62	0.1	\$ 13,306.01	100%	52%	48%	0%	100%		3.2
AHS	Accounting Appl	INTUT001	Quickbooks	Deese	X	20	20	0	8	12	20	0.2	\$ 6,653.00	100%	40%	60%	0%	100%		1.6
AHS	Digital Info Tech	MICRO069	MOS Bundle	Grooms	X	44	44	37	4	3	7	0.2	\$ 3,326.50	100%	57%	43%	84%	16%		0.8
AHS	Bus Software App	MICRO069	MOS Bundle	Grooms	X	12	12	7	5	0	5	0.2	\$ 4,158.13	100%	100%	0%	58%	42%		1.0
AHS	Patient Care Assisting	FDMQA002	C N A	McCain	X	20	20	0	17	3	20	0.1	\$ 7,068.82	100%	85%	15%	0%	100%		1.7
AHS	Patient Care Assisting		CPR/AED/BLS for Healthcare Providers	McCain		40	40	0	40	0	40	0	\$ -	100%	100%	0%	0%	100%		0.0
AHS	Health Science		CPR/AED/BLS for Healthcare Providers	McCain		66	66	0	66	0	66	0	\$ -	100%	100%	0%	0%	100%		0.0
AHS	Building Cons Tech	HBINS002	Homebuilder's PAC	Morgan, M	X	80	80	80	0	0	0	0.1	\$ -	100%	0%	0%	100%	0%		0.0
AHS	Food Science	NRAEF003	ServSafe Manager	Morgenthal	X	27	27	0	16	11	27	0.2	\$ 13,306.01	100%	59%	41%	0%	100%		3.2
AHS	Emergency Med Responder	IEMSR001	EMR	Wallace	X	18	18	0	13	5	18	0.1	\$ 5,405.56	100%	72%	28%	0%	100%		1.3
AHS	Emergency Med Responder		CPR/AED/BLS for Healthcare Providers	Wallace		18	18	0	18	0	18	0	\$ -	100%	100%	0%	0%	100%		0.0
AHS	Health Science		CPR/AED/BLS for Healthcare Providers	Wallace		86	86	0	86	0	86	0	\$ -	100%	100%	0%	0%	100%		0.0
AHS	Journalism	ADOBE018	Adobe: Premiere Pro	Williams	X	22	22	0	0	22	22	0.1	\$ -	100%	0%	100%	0%	100%		0.0
School Total:						558	558	124	315	119	434		\$ 57,382.15	100%	73%	27%	22%	78%	\$20,891.50	13.8

2017-18 Industry Certification Bayside High School

School	Program	CERT #	Assessment	Teacher of Record	School Grade	# Students Identified	# Participants	# In Progress	# Passing	# Failing	# Completing Participants	Funding Weights	Potential CAPE Funding \$	% Participants	% Passing	% Failing	% In Progress	% Completing Participants	Cost of Assessments & Test Prep Used	Potential Bonus FTE Calculation
BHS	Patient Care Assisting	FDMQA002	C N A	Caraballo	X	11	11	0	11	0	11	0.1	\$ 4,573.94	100%	100%	0%	0%	100%		1.1
BHS	Health Science		CPR/AED/BLS for Healthcare Providers	Caraballo		14	14	0	14	0	14	0	\$ -	100%	100%	0%	0%	100%		0.0
BHS	Patient Care Assisting		CPR/AED/BLS for Healthcare Providers	Caraballo		9	9	0	9	0	9	0	\$ -	100%	100%	0%	0%	100%		0.0
BHS	Culinary Arts	FRALA001	SafeStaff Food Handler Certification	Cox		55	55	0	54	1	55	0	\$ -	100%	98%	2%	0%	100%		0.0
BHS	Culinary Arts	NRAEF002	ProStart Certificate of Achievement	Cox	X	4	4	0	4	0	4	0.2	\$ 3,326.50	100%	100%	0%	0%	100%		0.8
BHS	Culinary Arts	NRAEF003	ServSafe Manager	Cox	X	44	44	0	32	12	44	0.2	\$ 26,612.01	100%	73%	27%	0%	100%		6.4
BHS	Embry Riddle Dual Enroll	USINS001	Small UAS Safety Certification	Fenech	X	2	2	0	2	0	2	0.2	\$ 1,663.25	100%	100%	0%	0%	100%		0.4
BHS	Culinary Arts	FRALA001	SafeStaff Food Handler Certification	Gray		59	59	0	59	0	59	0	\$ -	100%	100%	0%	0%	100%		0.0
BHS	Culinary Arts	NRAEF002	ProStart Certificate of Achievement	Gray	X	15	15	0	15	0	15	0.2	\$ 12,474.38	100%	100%	0%	0%	100%		3.0
BHS	Culinary Arts	NRAEF003	ServSafe Manager	Gray	X	51	51	0	44	7	51	0.2	\$ 36,591.52	100%	86%	14%	0%	100%		8.8
BHS	Drafting	ADESK002	Autodesk - Certified User AutoCAD	Kimbrell	X	3	3	0	1	2	3	0.2	\$ 831.63	100%	33%	67%	0%	100%		0.2
BHS	Drafting	ADESK008	Autodesk - Certified User Revit	Kimbrell	X	49	49	8	6	35	41	0.2	\$ 4,989.75	100%	15%	85%	16%	84%		1.2
BHS	Drafting	ADESK011	Autodesk - Certified User Inventor	Kimbrell	X	27	27	0	26	1	27	0.2	\$ 21,622.26	100%	96%	4%	0%	100%		5.2
BHS	Machining Tech	MSSCN001	MSSC Certified Production Technician	McCormick	X	63	63	61	2	0	2	0.5	\$ 4,158.13	100%	100%	0%	97%	3%		1.0
BHS	Engineering Technology	SOLID003	Solidworks	Mitchell	X	26	26	0	16	10	26	0.2	\$ 13,306.01	100%	62%	38%	0%	100%		3.2
BHS	Health Science	NATHA003	CMAA	Parr	X	30	30	0	30	0	30	0.1	\$ 12,474.38	100%	100%	0%	0%	100%		3.0
BHS	Health Science		CPR/AED/BLS for Healthcare Providers	Parr		58	58	0	58	0	58	0	\$ -	100%	100%	0%	0%	100%		0.0
BHS	TV Production	ADOBE018	Adobe: Premiere Pro	Potter	X	63	63	0	47	16	63	0.1	\$ 19,543.20	100%	75%	25%	0%	100%		4.7
BHS	Digital Design	ADOBE010	Adobe: Dreamweaver	Robertson	X	7	7	0	5	2	7	0.2	\$ 4,158.13	100%	71%	29%	0%	100%		1.0
BHS	Digital Design	ADOBE011	Adobe: Flash	Robertson	X	18	18	2	11	5	16	0.2	\$ 9,147.88	100%	69%	31%	11%	89%		2.2
BHS	Digital Design	ADOBE018	Adobe: Premiere Pro	Robertson	X	4	4	0	1	3	4	0.2	\$ 831.63	100%	25%	75%	0%	100%		0.2
BHS	Digital Design	ADOBE020	Adobe: Illustrator	Robertson	X	41	41	0	33	8	41	0.1	\$ 13,721.82	100%	80%	20%	0%	100%		3.3
BHS	Digital Design	ADOBE021	Adobe: InDesign	Robertson	X	39	39	10	26	3	29	0.1	\$ 10,811.13	100%	90%	10%	26%	74%		2.6
BHS	Digital Design	ADOBE022	Adobe: Photoshop	Robertson	X	20	20	0	20	0	20	0.1	\$ 8,316.25	100%	100%	0%	0%	100%		2.0
													\$ -							
School Total:						712	712	81	526	105	631		\$ 209,153.78	100%	83%	17%	11%	89%	\$27,242.83	50.3

2017-18 Industry Certification Cocoa Beach Sr. High School

School	Program	CERT #	Assessment	Teacher of Record	School Grade	# Students Identified	# Participants	# In Progress	# Passing	# Failing	# Completing Participants	Funding Weights	Potential Funding \$	% Participants	% Passing	% Failing	% In Progress	% Completing Participants	Cost of Assessments & Test Prep Used	Potential Bonus FTE Calculation
CBHS	Int'l Business	MICRO069	MOS Bundle	Friedlander	X	35	35	3	17	15	32	0.2	\$ 14,137.63	100%	53%	47%	9%	91%		3.400
CBHS	Int'l Business	MICRO017	Microsoft Office Master	Friedlander	X	1	1	0	1	0	1	0.2	\$ 831.63	100%	100%	0%	0%	100%		0.200
CBHS	Fashion Design Services	NOCTI003	NOCTI - Apparel & Text Prod & Mer	Lengyel		3	3	0	2	1	3	0	\$ -	100%	67%	33%	0%	100%		0.000
CBHS	Marketing Management	ADOBE021	Adobe: InDesign	Moore	X	9	9	0	0	9	9	0.1	\$ -	100%	0%	100%	0%	100%		0.000
CBHS	Digital Info Tech	MICRO017	Microsoft Office Master	Walz	X	2	2	0	2	0	2	0.2	\$ 1,663.25	100%	100%	0%	0%	100%		0.400
CBHS	Digital Info Tech	MICRO069	MOS Bundle	Walz	X	49	49	4	26	19	45	0.2	\$ 21,622.26	100%	58%	42%	8%	92%		5.200
School Total:						99	99	7	48	44	92		\$ 38,254.77	100%	52%	48%	7%	93%	\$5,088.50	9.200

2017-18 Industry Certification Cocoa High School

School	Program	CERT #	Assessment	Teacher of Record	School Grade	# Students Identified	# Participants	# In Progress	# Passing	# Failing	# Completing Participants	Funding Weights	Potential Funding \$	% Participants	% Passing	% Failing	% In Progress	% Completing Participants	Cost of Assessments & Test Prep Used	Potential Bonus FTE Calculation
CHS	Drafting	ADESK002	Autodesk - Certified User AutoCAD	Auxier	X	27	27	0	23	4	27	0.2	\$ 19,127.38	100%	85%	15%	0%	100%		4.600
CHS	Culinary Arts	FRALA001	SafeStaff Food Handler Certification	Knight		58	58	0	58	0	58	0	\$ -	100%	100%	0%	0%	100%		0.000
CHS	Culinary Arts	NRAEF003	ServSafe Manager	Knight	X	31	31	0	14	17	31	0.2	\$ 11,642.76	100%	45%	55%	0%	100%		2.800
CHS	Health Science	NATHA003	CMAA	Mannes	X	15	15	0	11	4	15	0.1	\$ 4,573.94	100%	73%	27%	0%	100%		1.100
CHS	Health Science		CPR/AED/BLS for Healthcare Providers	Mannes		25	25	0	25	0	25	0	\$ -	100%	100%	0%	0%	100%		0.000
CHS	Digital Design	ADOBE018	Adobe: Premiere Pro	Nauman	X	1	1	0	0	1	1	0.1	\$ -	100%	0%	100%	0%	100%		0.000
CHS	Digital Design	ADOBE020	Adobe: Illustrator	Nauman	X	6	6	0	0	6	6	0.1	\$ -	100%	0%	100%	0%	100%		0.000
CHS	Digital Design	ADOBE021	Adobe: InDesign	Nauman	X	16	16	0	1	15	16	0.1	\$ 415.81	100%	6%	94%	0%	100%		0.100
CHS	Digital Info Tech	MICRO069	MOS Bundle	Nauman	X	55	55	31	20	4	24	0.2	\$ 16,632.51	100%	83%	17%	56%	44%		4.000
CHS	Accounting Appl	INTUT001	Intuit: Quick Books	Ocker	X	7	7	0	0	7	7	0.2	\$ -	100%	0%	100%	0%	100%		0.000
CHS	Digital Info Tech	ADOBE022	Adobe: Photoshop	Ocker	X	2	2	0	1	1	2	0.1	\$ 415.81	100%	50%	50%	0%	100%		0.100
CHS	Digital Info Tech	MICRO069	MOS Bundle	Ocker	X	53	53	45	7	1	8	0.2	\$ 5,821.38	100%	88%	13%	85%	15%		1.400
CHS	Web Development	ADOBE010	Adobe: Dreamweaver	Ocker	X	6	6	0	2	4	6	0.2	\$ 1,663.25	100%	33%	67%	0%	100%		0.400
CHS	Web Development	ADOBE011	Adobe: Flash	Ocker	X	1	1	0	0	1	1	0.2	\$ -	100%	0%	100%	0%	100%		0.000
CHS	Automotive Collision	FLADA001	FLADA	Riffe	X	38	38	0	21	17	38	0.1	\$ 8,732.07	100%	55%	45%	0%	100%		2.100
School Total:						341	341	76	183	82	265		\$ 69,024.91	100.0%	69.1%	30.9%	22%	78%	\$17,655.99	16.600

2017-18 Industry Certification Eau Gallie High School

School	Program		Assessment	Teacher of Record	School Grade	# Students Identified	# Participants	# In Progress	# Passing	# Failing	# Completing Participants	Funding Weights	Potential Funding \$	% Participants	% Passing	% Failing	% In Progress	% Completing Participants	Cost of Assessments & Test Prep Used	Potential Bonus FTE Calculation
EGHS	Digital Info Tech	MICRO069	MOS Bundle	Barton	X	66	66	62	1	3	4	0.2	\$ 831.63	100%	25%	75%	94%	6%		0.2
EGHS	Bus Software App	MICRO069	MOS Bundle	Barton	X	85	85	79	4	2	6	0.2	\$ 3,326.50	100%	67%	33%	93%	7%		0.8
EGHS	Early Childhood Ed	CPREC001	National CDA	Dilger	X	1	1	0	1	0	1	0.2	\$ 831.63	100%	100%	0%	0%	100%		0.2
EGHS	Early Childhood Ed	FLDCF004	Intro to Childcare Training Certificate	Dilger		9	9	0	9	0	9	0	\$ -	100%	100%	0%	0%	100%		0.0
EGHS	Early Childhood Ed	FLDCF005	Staff Credential	Dilger		9	9	0	9	0	9	0	\$ -	100%	100%	0%	0%	100%		0.0
EGHS	Early Childhood Ed		CPR/First Aid	Dilger		9	9	0	9	0	9	0	\$ -	100%	100%	0%	0%	100%		0.0
EGHS	Digital Media/MM	ADOBE010	Adobe: Dreamweaver	Keener	X	1	1	0	1	0	1	0.2	\$ 831.63	100%	100%	0%	0%	100%		0.2
EGHS	Digital Media/MM	ADOBE018	Adobe: Premiere Pro	Keener	X	112	112	0	20	92	112	0.1	\$ 8,316.25	100%	18%	82%	0%	100%		2.0
EGHS	Digital Media/MM	ADOBE020	Adobe: Illustrator	Keener	X	47	47	0	13	34	47	0.1	\$ 5,405.56	100%	28%	72%	0%	100%		1.3
EGHS	Digital Media/MM	ADOBE021	Adobe: InDesign	Keener	X	9	9	0	1	8	9	0.1	\$ 415.81	100%	11%	89%	0%	100%		0.1
EGHS	Digital Media/MM	ADOBE022	Adobe: Photoshop	Keener	X	83	83	0	34	49	83	0.1	\$ 14,137.63	100%	41%	59%	0%	100%		3.4
EGHS	Technical Design	ADESK002	Autodesk - Certified User AutoCAD	Lustic	X	79	79	0	51	28	79	0.2	\$ 42,412.89	100%	65%	35%	0%	100%		10.2
EGHS	Technical Design	ADESK008	Autodesk - Certified User Revit	Lustic	X	3	3	0	0	3	3	0.2	\$ -	100%	0%	100%	0%	100%		0.0
EGHS	Aviation	FEDAA013	FAA Ground School	McInnish	X	24	24	1	19	4	23	0.2	\$ 15,800.88	100%	83%	17%	4%	96%		3.8
EGHS	Health Science	NATHA003	CMAA	McMahon	X	16	16	0	16	0	16	0.1	\$ 6,653.00	100%	100%	0%	0%	100%		1.6
EGHS	Health Science		CPR/AED/BLS for Healthcare Providers	McMahon		30	30	0	30	0	30	0	\$ -	100%	100%	0%	0%	100%		0.0
EGHS	Marine Tech	FLADA001	FLADA	Reeder	X	16	16	0	8	8	16	0.1	\$ 3,326.50	100%	50%	50%	0%	100%		0.8
EGHS	Automotive Service Tech	FLADA001	FLADA	Younger	X	30	30	0	17	13	30	0.1	\$ 7,068.82	100%	57%	43%	0%	100%		1.7
School Total:						629	629	142	243	244	487		\$ 109,358.74	100.0%	49.9%	50.1%	23%	77%	\$21,751.19	26.3

2017-18 Industry Certification Edgewood Jr./Sr. High School

School	Program	CERT #	Assessment	Teacher of Record	School Grade	# Students Identified	# Participants	# In Progress	# Passing	# Failing	# Completing Participants	Funding Weights	Potential Funding \$	% Participants	% Passing	% Failing	% In Progress	% Completing Participants	Cost of Assessments & Test Prep Used	Potential Bonus FTE Calculation
EHS	TV Production	ADOBE018	Adobe: Premiere Pro	Kyzer	X	40	40	0	36	4	40	0.1	\$ 14,969.26	100%	90%	10%	0%	100%		3.6
EHS	Digital Design	ADOBE018	Adobe: Premiere Pro	Vickers	X	1	1	0	0	1	1	0.1	\$ -	100%	0%	100%	0%	100%		0.0
EHS	Digital Design	ADOBE020	Adobe: Illustrator	Vickers	X	44	44	0	31	13	44	0.1	\$ 12,890.19	100%	70%	30%	0%	100%		3.1
EHS	Digital Design	ADOBE021	Adobe: InDesign	Vickers	X	47	47	0	36	11	47	0.1	\$ 14,969.26	100%	77%	23%	0%	100%		3.6
EHS	Digital Design	ADOBE022	Adobe: Photoshop	Vickers	X	36	36	0	34	2	36	0.1	\$ 14,137.63	100%	94%	6%	0%	100%		3.4
School Total:						168	168	0	137	31	168		\$ 56,966.34	100.0%	81.5%	18.5%	0%	100%	\$4,505.50	13.7

2017-18 Industry Certification Heritage High School

School	Program	CERT #	Assessment	Teacher of Record	School Grade	# Students Identified	# Participants	# In Progress	# Passing	# Failing	# Completing Participants	Funding Weights	Potential Funding \$	% Participants	% Passing	% Failing	% In Progress	% Completing Participants	Cost of Assessments & Test Prep Used	Potential Bonus FTE Calculation	
HHS	Automotive Service Tech	FLADA001	FLADA	Broud	X	21	21	0	14	7	21	0.1	\$ 5,821.38	100%	67%	33%	0%	100%		1.4	
HHS	Food Science	NRAEF003	ServSafe Manager	Burch	X	60	60	0	36	24	60	0.2	\$ 29,938.51	100%	60%	40%	0%	100%		7.2	
HHS	Digital Info Tech	MICRO069	MOS Bundle	Degginger	X	134	134	111	15	8	23	0.2	\$ 12,474.38	100%	65%	35%	83%	17%		3.0	
HHS	Health Science	NATHA003	CMAA	Luna	X	98	98	0	79	19	98	0.1	\$ 32,849.20	100%	81%	19%	0%	100%		7.9	
HHS	Health Science		CPR/AED/BLS for Healthcare Providers	Luna		98	98	0	98	0	98	0	\$ -	100%	100%	0%	0%	100%		0.0	
HHS	Technical Design	ADESK002	Autodesk - Certified User AutoCAD	Pallo	X	21	21	0	11	10	21	0.2	\$ 9,147.88	100%	52%	48%	0%	100%		2.2	
HHS	Technical Design	ADESK011	Autodesk - Certified User Inventor	Pallo	X	12	12	0	6	6	12	0.2	\$ 4,989.75	100%	50%	50%	0%	100%		1.2	
HHS	Digital Info Tech	MICRO069	MOS Bundle	Pallo	X	42	42	0	18	24	42	0.2	\$ 14,969.26	100%	43%	57%	0%	100%		3.6	
HHS	Bus Software App	MICRO069	MOS Bundle	Payne	X	25	25	0	16	9	25	0.2	\$ 13,306.01	100%	64%	36%	0%	100%		3.2	
HHS	Digital Info Tech	MICRO069	MOS Bundle	Payne	X	45	45	0	22	23	45	0.2	\$ 18,295.76	100%	49%	51%	0%	100%		4.4	
HHS	Digital Media/MM	ADOBE018	Adobe: Premiere Pro	Stengle	X	24	24	0	6	18	24	0.1	\$ 2,494.88	100%	25%	75%	0%	100%		0.6	
HHS	Digital Media/MM	ADOBE020	Adobe: Illustrator	Stengle	X	10	10	0	7	3	10	0.1	\$ 2,910.69	100%	70%	30%	0%	100%		0.7	
HHS	Digital Media/MM	ADOBE021	Adobe: InDesign	Stengle	X	5	5	0	3	2	5	0.1	\$ 1,247.44	100%	60%	40%	0%	100%		0.3	
HHS	Digital Media/MM	ADOBE022	Adobe: Photoshop	Stengle	X	100	100	0	48	52	100	0.1	\$ 19,959.01	100%	48%	52%	0%	100%		4.8	
HHS	Digital Info Tech	MICRO069	MOS Bundle	Stengle	X	18	18	0	15	3	18	0.2	\$ 12,474.38	100%	83%	17%	0%	100%		3.0	
HHS	Medical Admin Specialist	NATHA003	CMAA	Trotman	X	43	43	2	11	30	41	0.1	\$ 4,573.94	100%	27%	73%	5%	95%		1.1	
HHS	Medical Admin Specialist		CPR/AED/BLS for Healthcare Providers	Trotman		41	41	0	41	0	41	0	\$ -	100%	100%	0%	0%	100%		0.0	
HHS	Environmental Water	FLDEP003	Wastewater Treatment Plant Oper C	Vahlshing	X	18	18	3	2	13	15	0.1	\$ 831.63	100%	13%	87%	17%	83%		0.2	
HHS	Environmental Water	FLDEP006	Water Treat Plant Oper Lvl C	Vahlshing	X	18	18	0	8	10	18	0.1	\$ 3,326.50	100%	44%	56%	0%	100%		0.8	
HHS	Advanced Manufacturing	SOLID003	Solidworks	Verdin	X	10	10	1	1	8	9	0.2	\$ 831.63	100%	11%	89%	10%	90%		0.2	
School Total:						843	843	117	457	269	726		\$ 190,442.21	100.0%	62.9%	37.1%	14%	86%	\$56,370.86	45.8	

2017-18 Industry Certification Melbourne High School

School	Program	CERT #	Assessment	Teacher of Record	School Grade	# Students Identified	# Participants	# In Progress	# Passing	# Failing	# Completing Participants	Funding Weights	Potential Funding \$	% Participants	% Passing	% Failing	% In Progress	% Completing Participants	Cost of Assessments & Test Prep Used	Potential Bonus FTE Calculation
MHS	Web Development	ADOBE010	Adobe: Dreamweaver	Angove	X	38	38	0	28	10	38	0.2	\$ 23,285.51	100%	74%	26%	0%	100%		5.6
MHS	Web Development	ADOBE011	Adobe: Flash	Angove	X	34	34	0	22	12	34	0.2	\$ 18,295.76	100%	65%	35%	0%	100%		4.4
MHS	Web Development	ADOBE018	Adobe: Premiere Pro	Angove	X	5	5	0	3	2	5	0.1	\$ 1,247.44	100%	60%	40%	0%	100%		0.3
MHS	Web Development	ADOBE022	Adobe: Photoshop	Angove	X	11	11	0	7	4	11	0.1	\$ 2,910.69	100%	64%	36%	0%	100%		0.7
MHS	Building Cons Tech	HBINS002	Homebuilder's PAC	Dyer	X	8	8	0	0	8	8	0.1	\$ -	100%	0%	100%	0%	100%		0.0
MHS	Digital Design	ADOBE020	Adobe: Illustrator	Fannon	X	3	3	0	2	1	3	0.1	\$ 831.63	100%	67%	33%	0%	100%		0.2
MHS	Digital Design	ADOBE021	Adobe: InDesign	Fannon	X	42	42	0	28	14	42	0.1	\$ 11,642.76	100%	67%	33%	0%	100%		2.8
MHS	Digital Design	ADOBE022	Adobe: Photoshop	Fannon	X	110	110	0	56	54	110	0.1	\$ 23,285.51	100%	51%	49%	0%	100%		5.6
MHS	Culinary Arts	FRALA001	SafeStaff Food Handler Certification	Ferguson		52	52	0	52	0	52	0	\$ -	100%	100%	0%	0%	100%		0.0
MHS	Culinary Arts	NRAEF003	ServSafe Manager	Ferguson	X	43	43	0	29	14	43	0.2	\$ 24,117.14	100%	67%	33%	0%	100%		5.8
MHS	Engineering Technology	SOLID003	Solidworks	Gabeler	X	49	49	0	36	13	49	0.2	\$ 29,938.51	100%	73%	27%	0%	100%		7.2
MHS	Emergency Med Responder	IEMSR001	EMR	Krug	X	18	18	0	4	14	18	0.1	\$ 1,663.25	100%	22%	78%	0%	100%		0.4
MHS	Patient Care Assisting	FDMQA002	C N A	Krug	X	14	14	0	14	0	14	0.1	\$ 5,821.38	100%	100%	0%	0%	100%		1.4
MHS	Patient Care Assisting		CPR/AED/BLS for Healthcare Providers	Krug		14	14	0	14	0	14	0	\$ -	100%	100%	0%	0%	100%		0.0
MHS	Emergency Med Responder		CPR/AED/BLS for Healthcare Providers	Krug		20	20	0	20	0	20	0	\$ -	100%	100%	0%	0%	100%		0.0
MHS	Health Science		CPR/AED/BLS for Healthcare Providers	Krug		34	34	0	34	0	34	0	\$ -	100%	100%	0%	0%	100%		0.0
MHS	Culinary Arts	FRALA001	SafeStaff Food Handler Certification	Ollinger		81	81	0	81	0	81	0	\$ -	100%	100%	0%	0%	100%		0.0
MHS	Food Science	NRAEF003	ServSafe Manager	Ollinger	X	2	2	0	0	2	2	0.2	\$ -	100%	0%	100%	0%	100%		0.0
MHS	Accounting Appl	INTUT001	Quickbooks	Schweich	X	19	19	0	0	19	19	0.2	\$ -	100%	0%	100%	0%	100%		0.0
MHS	Accounting Appl	MICRO069	MOS Bundle	Schweich	X	3	3	0	3	0	3	0.2	\$ 2,494.88	100%	100%	0%	0%	100%		0.6
MHS	Digital Info Tech	MICRO069	MOS Bundle	Uhing	X	160	160	59	101	0	101	0.2	\$ 83,994.16	100%	100%	0%	37%	63%		20.2
School Total:						760	760	59	534	167	701		\$ 229,528.60	100.0%	76.2%	23.8%	7.8%	92.2%	\$ 26,290.33	55.2

2017-18 Industry Certification Merrit Island High School

School	Program	Cert #	Assessment	Teacher of Record	School Grade	# Students Identified	# Participants	# In Progress	# Passing	# Failing	# Completing Participants	Funding Weights	Potential Funding \$	% Participants	% Passing	% Failing	% In Progress	% Completing Participants	Cost of Assessments & Test Prep Used	Potential Bonus FTE Calculation
MIHS	Bus Software App	MICRO017	Microsoft Office Master	Burr	X	1	1	0	1	0	1	0.2	\$ 831.63	100%	100%	0%	0%	100%		0.2
MIHS	Bus Software App	MICRO069	MOS Bundle	Burr	X	28	28	21	5	2	7	0.2	\$ 4,158.13	100%	71%	29%	75%	25%		1.0
MIHS	Digital Info Tech	MICRO069	MOS Bundle	Burr	X	80	80	67	11	2	13	0.2	\$ 9,147.88	100%	85%	15%	84%	16%		2.2
MIHS	Hosp & Tourism	MICRO069	MOS Bundle	Burr	X	11	11	5	5	1	6	0.2	\$ 4,158.13	100%	83%	17%	45%	55%		1.0
MIHS	Food Science	NRAEF003	ServSafe Manager	Cheshire	X	17	17	0	15	2	17	0.2	\$ 12,474.38	100%	88%	12%	0%	100%		3.0
MIHS	Hosp & Tourism	ADOBE021	Adobe: InDesign	Erickson	X	5	5	0	5	0	5	0.1	\$ 2,079.06	100%	100%	0%	0%	100%		0.5
MIHS	Hosp & Tourism	ADOBE022	Adobe: Photoshop	Erickson	X	1	1	0	1	0	1	0.1	\$ 415.81	100%	100%	0%	0%	100%		0.1
MIHS	Web Development	ADOBE010	Adobe: Dreamweaver	Erickson	X	36	36	0	36	0	36	0.2	\$ 29,938.51	100%	100%	0%	0%	100%		7.2
MIHS	Web Development	ADOBE011	Adobe: Flash	Erickson	X	22	22	0	21	1	22	0.2	\$ 17,464.13	100%	95%	5%	0%	100%		4.2
MIHS	Digital Design	ADOBE011	Adobe: Flash	Forbes	X	2	2	0	0	2	2	0.2	\$ -	100%	0%	100%	0%	100%		0.0
MIHS	Digital Design	ADOBE018	Adobe: Premiere Pro	Forbes	X	9	9	0	8	1	9	0.1	\$ 3,326.50	100%	89%	11%	0%	100%		0.8
MIHS	Digital Design	ADOBE020	Adobe: Illustrator	Forbes	X	15	15	0	13	2	15	0.1	\$ 5,405.56	100%	87%	13%	0%	100%		1.3
MIHS	Digital Design	ADOBE021	Adobe: InDesign	Forbes	X	27	27	0	27	0	27	0.1	\$ 11,226.94	100%	100%	0%	0%	100%		2.7
MIHS	Digital Design	ADOBE022	Adobe: Photoshop	Forbes	X	9	9	0	9	0	9	0.1	\$ 3,742.31	100%	100%	0%	0%	100%		0.9
MIHS	Automotive Service Tech	FLADA001	FLADA	Ordner	X	17	17	0	8	9	17	0.1	\$ 3,326.50	100%	47%	53%	0%	100%		0.8
MIHS	PLTW - ENGINEERING	ADESK011	Autodesk - Certified User Inventor	Parker	X	41	41	0	14	27	41	0.2	\$ 11,642.76	100%	34%	66%	0%	100%		2.8
MIHS	Early Childhood Ed	FLDCF004	Intro to Childcare Training Certificate	Pearlman		12	12	0	12	0	12	0	\$ -	100%	100%	0%	0%	100%		0.0
MIHS	Early Childhood Ed	FLDCF005	Staff Credential	Pearlman		12	12	0	12	0	12	0	\$ -	100%	100%	0%	0%	100%		0.0
MIHS	Early Childhood Ed		CPR/First Aid	Pearlman		12	12	0	12	0	12	0	\$ -	100%	100%	0%	0%	100%		0.0
School Total:						357	357	93	215	49	264		\$ 119,338.24	100.0%	81.4%	18.6%	26%	74%	\$14,945.35	28.7

2017-18 Industry Certification Palm Bay Magnet School

School	Program	Cert #	Assessment	Teacher of Record	School Grade	# Students Identified	# Participants	# In Progress	# Passing	# Failing	# Completing Participants	Funding Weights	Potential Funding \$	% Participants	% Passing	% Failing	% In Progress	% Completing Participants	Cost of Assessments & Test Prep Used	Potential Bonus FTE Calculation	
PBMS	Technical Design	ADESK002	Autodesk - Certified User AutoCAD	Allen, D	X	8	8	1	2	5	7	0.2	\$ 1,663.25	100%	29%	71%	13%	88%		0.4	
PBMS	Technical Design	ADESK011	Autodesk - Certified User Inventor	Allen, D	X	6	6	0	4	2	6	0.2	\$ 3,326.50	100%	67%	33%	0%	100%		0.8	
PBMS	Applied Robotics	ADESK002	Autodesk - Certified User AutoCAD	Allen, D	X	1	1	0	1	0	1	0.2	\$ 831.63	100%	100%	0%	0%	100%		0.2	
PBMS	Applied Robotics	ADESK011	Autodesk - Certified User Inventor	Allen, D	X	4	4	0	2	2	4	0.2	\$ 1,663.25	100%	50%	50%	0%	100%		0.4	
PBMS	Engineering Technology	SOLID003	Solidworks	Allen, R	X	13	13	1	6	6	12	0.2	\$ 4,989.75	100%	50%	50%	8%	92%		1.2	
PBMS	Patient Care Assisting	FDMQA002	C N A	Bassile	X	15	15	0	15	0	15	0.1	\$ 6,237.19	100%	100%	0%	0%	100%		1.5	
PBMS	Health Science		CPR/AED/BLS for Healthcare Providers	Bassile		39	39	0	39	0	39	0	\$ -	100%	100%	0%	0%	100%		0.0	
PBMS	Early Childhood Ed	CPREC001	National CDA	Chappell	X	3	3	0	3	0	3	0.2	\$ 2,494.88	100%	100%	0%	0%	100%		0.6	
PBMS	Early Childhood Ed	FLDCF004	Intro to Childcare Training Certificate	Chappell		13	13	0	12	1	13	0	\$ -	100%	92%	8%	0%	100%		0.0	
PBMS	Early Childhood Ed	FLDCF005	Staff Credential	Chappell		13	13	0	12	1	13	0	\$ -	100%	92%	8%	0%	100%		0.0	
PBMS	Early Childhood Ed		CPR/First Aid	Chappell		15	15	0	15	0	15	0	\$ -	100%	100%	0%	0%	100%		0.0	
PBMS	Digital Media/MM	ADOBE010	Adobe: Dreamweaver	Fine	X	1	1	0	0	1	1	0.2	\$ -	100%	0%	100%	0%	100%		0.0	
PBMS	Digital Media/MM	ADOBE018	Adobe: Premiere Pro	Fine	X	10	10	2	1	7	8	0.1	\$ 415.81	100%	13%	88%	20%	80%		0.1	
PBMS	Digital Media/MM	ADOBE020	Adobe: Illustrator	Fine	X	9	9	3	0	6	6	0.1	\$ -	100%	0%	100%	33%	67%		0.0	
PBMS	Digital Media/MM	ADOBE022	Adobe: Photoshop	Fine	X	85	85	1	15	69	84	0.1	\$ 6,237.19	100%	18%	82%	1%	99%		1.5	
PBMS	Building Cons Tech	HBINS002	Homebuilder's PAC	Hayes	X	9	9	9	0	0	0	0.1	\$ -	100%	0%	0%	100%	0%		0.0	
PBMS	Web App Dev & Prog	PROSO017	CIW - JavaScript Specialist	Johnston	X	7	7	0	3	4	7	0.2	\$ 2,494.88	100%	43%	57%	0%	100%		0.6	
PBMS	Web App Dev & Prog	PROSO027	CIW - Advanced HTML5 & CSS3 Spec	Johnston	X	6	6	0	0	6	6	0.2	\$ -	100%	0%	100%	0%	100%		0.0	
PBMS	Culinary Arts	FRALA001	SafeStaff Food Handler Certification	Ho		50	50	0	50	0	50	0	\$ -	100%	100%	0%	0%	100%		0.0	
PBMS	Culinary Arts	NRAEF002	ProStart Certificate of Achievement	Ho	X	2	2	0	2	0	2	0.2	\$ 1,663.25	100%	100%	0%	0%	100%		0.4	
PBMS	Culinary Arts	NRAEF003	ServSafe Manager	Ho	X	37	37	0	30	7	37	0.2	\$ 24,948.76	100%	81%	19%	0%	100%		6.0	
PBMS	Criminal Justice	NOCTI010	NOCTI - Criminal Justice	Morrison		14	14	0	14	0	14	0	\$ -	100%	100%	0%	0%	100%		0.0	
PBMS	Game & Simulation	TBOOM001	ToonBoom Harmony Premium	Vogt	X	1	1	0	0	1	1	0.1	\$ -	100%	0%	100%	0%	100%		0.0	
PBMS	Game & Simulation	TBOOM003	ToonBoom Storyboard Pro	Vogt	X	7	7	0	0	7	7	0.1	\$ -	100%	0%	100%	0%	100%		0.0	
School Total:						368	368	17	226	125	351		\$ 56,966.34	100%	64.4%	35.6%	4.6%	95%	\$18,703.83	13.7	

2017-18 Industry Certification Rockledge High School

School	Program	Cert #	Assessment	Teacher of Record	School Grade	# Students Identified	# Participants	# In Progress	# Passing	# Failing	# Completing Participants	Funding Weights	Potential Funding \$	% Participants	% Passing	% Failing	% In Progress	% Completing Participants	Cost of Assessments & Test Prep Used	Potential Bonus FTE Calculation	
RHS	Patient Care Assisting	FDMQA002	C N A	Byczek	X	15	15	0	15	0	15	0.1	\$ 6,237.19	100%	100%	0%	0%	100%		1.5	
RHS	Health Science		CPR/AED/BLS for Healthcare Providers	Byczek		124	124	0	124	0	124	0	\$ -	100%	100%	0%	0%	100%		0.0	
RHS	Patient Care Assisting		CPR/AED/BLS for Healthcare Providers	Byczek		30	30	0	30	0	30	0	\$ -	100%	100%	0%	0%	100%		0.0	
RHS	Digital Design	ADOBE018	Adobe: Premiere Pro	Dougherty	X	7	7	0	3	4	7	0.1	\$ 1,247.44	100%	43%	57%	0%	100%		0.3	
RHS	Digital Design	ADOBE020	Adobe: Illustrator	Dougherty	X	70	70	0	37	33	70	0.1	\$ 15,385.07	100%	53%	47%	0%	100%		3.7	
RHS	Digital Design	ADOBE021	Adobe: InDesign	Dougherty	X	10	10	0	7	3	10	0.1	\$ 2,910.69	100%	70%	30%	0%	100%		0.7	
RHS	Digital Design	ADOBE022	Adobe: Photoshop	Dougherty	X	69	69	2	30	37	67	0.1	\$ 12,474.38	100%	45%	55%	3%	97%		3.0	
RHS	Hosp & Tourism	MICRO069	MOS Bundle	Kearns	X	31	31	1	11	19	30	0.2	\$ 9,147.88	100%	37%	63%	3%	97%		2.2	
RHS	Fashion Design Services	NOCTI003	NOCTI - Apparel & Text Prod & Mer	Pingston		7	7	0	5	2	7	0	\$ -	100%	71%	29%	0%	100%		0.0	
RHS	Technical Design	ADESK002	Autodesk - Certified User AutoCAD	Schooley	X	40	40	0	36	4	40	0.2	\$ 29,938.51	100%	90%	10%	0%	100%		7.2	
RHS	Technical Design	ADESK008	Autodesk - Certified User Revit	Schooley	X	32	32	0	5	27	32	0.2	\$ 4,158.13	100%	16%	84%	0%	100%		1.0	
RHS	Technical Design	ADESK011	Autodesk - Certified User Inventor	Schooley	X	3	3	0	2	1	3	0.2	\$ 1,663.25	100%	67%	33%	0%	100%		0.4	
RHS	Automotive Service Tech	FLADA001	FLADA	Sebetka	X	29	29	0	18	11	29	0.1	\$ 7,484.63	100%	62%	38%	0%	100%		1.8	
RHS	Criminal Justice	NOCTI010	NOCTI - Criminal Justice	Tardiff		21	21	2	16	3	19	0	\$ -	100%	84%	16%	10%	90%		0.0	
School Total:						488	488	5	339	144	483		\$ 90,647.17	100.0%	70.2%	29.8%	1%	99%	\$17,439.10	21.8	

2017-18 Industry Certification Satelite High School

School	Program	Cert #	Assessment	Teacher of Record	School Grade	# Students Identified	# Participants	# In Progress	# Passing	# Failing	# Completing Participants	Funding Weights	Potential Funding \$	% Participants	% Passing	% Failing	% In Progress	% Completing Participants	Cost of Assessments & Test Prep Used	Potential Bonus FTE Calculation
SHS	Digital Media/MM	ADOBE018	Adobe: Premiere Pro	Brooks	X	10	10	0	1	9	10	0.1	\$ 415.81	100%	10%	90%	0%	100%		0.1
SHS	Marketing Management	ADOBE021	Adobe: InDesign	Brooks	X	10	10	4	3	3	6	0.1	\$ 1,247.44	100%	50%	50%	40%	60%		0.3
SHS	Digital Info Tech	MICRO069	MOS Bundle	Brooks	X	36	36	25	11	0	11	0.2	\$ 9,147.88	100%	100%	0%	69%	31%		2.2
SHS	Bus Software App	MICRO069	MOS Bundle	Brooks	X	25	25	13	11	1	12	0.2	\$ 9,147.88	100%	92%	8%	52%	48%		2.2
SHS	Food Science	NRAEF003	ServSafe Manager	Doubek	X	14	14	0	6	8	14	0.2	\$ 4,989.75	100%	43%	57%	0%	100%		1.2
SHS	Technical Design	ADESK002	Autodesk - Certified User AutoCAD	Galiszewski	X	36	36	0	33	3	36	0.2	\$ 27,443.64	100%	92%	8%	0%	100%		6.6
SHS	Technical Design	ADESK008	Autodesk - Certified User Revit	Galiszewski	X	4	4	0	0	4	4	0.2	\$ -	100%	0%	100%	0%	100%		0.0
SHS	Technical Design	ADESK011	Autodesk - Certified User Inventor	Galiszewski	X	4	4	0	1	3	4	0.2	\$ 831.63	100%	25%	75%	0%	100%		0.2
SHS	Fashion Design Services	NOCTI003	NOCTI - Apparel & Text Prod & Mer	Gray		13	13	0	13	0	13	0	\$ -	100%	100%	0%	0%	100%		0.0
SHS	Automotive Service Tech	FLADA001	FLADA	Pitts	X	26	26	0	14	12	26	0.1	\$ 5,821.38	100%	54%	46%	0%	100%		1.4
SHS	Early Childhood Ed	FLDCF004	Intro to Childcare Training Certificate	Schmid		10	10	0	10	0	10	0	\$ -	100%	100%	0%	0%	100%		0.0
SHS	Early Childhood Ed	FLDCF005	Staff Credential	Schmid		10	10	0	10	0	10	0	\$ -	100%	100%	0%	0%	100%		0.0
SHS	Early Childhood Ed		CPR/First Aid	Schmid		10	10	0	10	0	10	0	\$ -	100%	100%	0%	0%	100%		0.0
SHS	Digital Media/MM	ADOBE010	Adobe: Dreamweaver	Strattan	X	1	1	0	1	0	1	0.2	\$ 831.63	100%	100%	0%	0%	100%		0.2
SHS	Digital Media/MM	ADOBE011	Adobe: Flash	Strattan	X	1	1	0	1	0	1	0.2	\$ 831.63	100%	100%	0%	0%	100%		0.2
SHS	Digital Media/MM	ADOBE018	Adobe: Premiere Pro	Strattan	X	15	15	9	2	4	6	0.1	\$ 831.63	100%	33%	67%	60%	40%		0.2
SHS	Digital Media/MM	ADOBE020	Adobe: Illustrator	Strattan	X	28	28	3	12	13	25	0.1	\$ 4,989.75	100%	48%	52%	11%	89%		1.2
SHS	Digital Media/MM	ADOBE021	Adobe: InDesign	Strattan	X	24	24	5	10	9	19	0.1	\$ 4,158.13	100%	53%	47%	21%	79%		1.0
SHS	Digital Media/MM	ADOBE022	Adobe: Photoshop	Strattan	X	52	52	5	20	27	47	0.1	\$ 8,316.25	100%	43%	57%	10%	90%		2.0
School Total:						329	329	64	169	96	265		\$ 79,004.41	100%	63.8%	36.2%	19%	81%	\$13,932.54	19.0

2017-18 Industry Certification Space Coast Jr./Sr. High School

School	Program	Cert #	Assessment	Teacher of Record	School Grade	# Students Identified	# Participants	# In Progress	# Passing	# Failing	# Completing Participants	Funding Weights	Potential Funding \$	% Participants	% Passing	% Failing	% In Progress	% Completing Participants	Cost of Assessments & Test Prep Used	Potential Bonus FTE Calculation
SCHS	TV Production	ADOBE018	Adobe: Premiere Pro	Dietz	X	58	58	0	11	47	58	0.1	\$ 4,573.94	100%	19%	81%	0%	100%		1.100
SCHS	TV Production	ADOBE022	Adobe: Photoshop	Dietz	X	1	1	0	0	1	1	0.1	\$ -	100%	0%	100%	0%	100%		0.000
SCHS	Drafting	ADESK002	Autodesk - Certified User AutoCAD	Gannon	X	22	22	0	22	0	22	0.2	\$ 18,295.76	100%	100%	0%	0%	100%		4.400
SCHS	Drafting	ADESK008	Autodesk - Certified User Revit	Gannon	X	9	9	0	6	3	9	0.2	\$ 4,989.75	100%	67%	33%	0%	100%		1.200
SCHS	Drafting	ADESK011	Autodesk - Certified User Inventor	Gannon	X	11	11	0	11	0	11	0.2	\$ 9,147.88	100%	100%	0%	0%	100%		2.200
SCHS	Drafting	ADESK021	Autodesk - Certified User AutoCAD Prof	Gannon	x	8	8	0	5	3	8	0.2	\$ 4,158.13	100%	63%	38%	0%	100%		1.000
SCHS	Food Science	NRAEF003	ServSafe Manager	Kimball	X	10	10	0	2	8	10	0.2	\$ 1,663.25	100%	20%	80%	0%	100%		0.400
SCHS	A/C Refrig & Heat	HBINS002	Homebuilder's PAC	Mount	X	19	19	0	0	19	19	0.1	\$ -	100%	0%	100%	0%	100%		0.000
SCHS	A/C Refrig & Heat	HVACE002	HVAC Excellence - A/C	Mount	X	8	8	0	8	0	8	0.2	\$ 6,653.00	100%	100%	0%	0%	100%		1.600
SCHS	A/C Refrig & Heat	HVACE011	HVAC Excellence - Electrical	Mount	X	5	5	0	5	0	5	0.2	\$ 4,158.13	100%	100%	0%	0%	100%		1.000
SCHS	A/C Refrig & Heat	NATEX001	NATE	Mount	X	1	1	0	1	0	1	0.2	\$ 831.63	100%	100%	0%	0%	100%		0.200
SCHS	A/C Refrig & Heat	NCCER018	NCCER	Mount	X	96	96	87	9	0	9	0.2	\$ 7,484.63	100%	100%	0%	91%	9%		1.800
SCHS	Teacher Assisting	EDTSO001	ParaPro	Olson		4	4	0	2	2	4	0	\$ -	100%	50%	50%	0%	100%		0.000
SCHS	Engineering Technology	SOLID003	Solidworks	Reyes	X	20	20	0	17	3	20	0.2	\$ 14,137.63	100%	85%	15%	0%	100%		3.400
SCHS	Bus Software App	MICRO069	MOS Bundle	Stoppelbein	X	33	33	26	7	0	7	0.2	\$ 5,821.38	100%	100%	0%	79%	21%		1.400
SCHS	Digital Info Tech	MICRO069	MOS Bundle	Stoppelbein	X	35	35	27	7	1	8	0.2	\$ 5,821.38	100%	88%	13%	77%	23%		1.400
School Total:						340	340	140	113	87	200		\$ 87,736.48	100.0%	56.5%	43.5%	41%	59%	\$18,729.33	21.100

2017-18 Industry Certification Titusville High School

School	Program	Cert #	Assessment	Teacher of Record	School Grade	# Students Identified	# Participants	# In Progress	# Passing	# Failing	# Completing Participants	Funding Weights	Potential Funding \$	% Participants	% Passing	% Failing	% In Progress	% Completing Participants	Cost of Assessments & Test Prep Used	Potential Bonus FTE Calculation
THS	Digital Design	ADOBE010	Adobe: Dreamweaver	Benson	X	1	1	0	0	1	1	0.2	\$ -	100%	0%	100%	0%	100%		0.0
THS	Digital Design	ADOBE011	Adobe: Flash	Benson	X	12	12	0	8	4	12	0.2	\$ 6,653.00	100%	67%	33%	0%	100%		1.6
THS	Digital Design	ADOBE020	Adobe: Illustrator	Benson	X	18	18	0	17	1	18	0.1	\$ 7,068.82	100%	94%	6%	0%	100%		1.7
THS	Digital Design	ADOBE021	Adobe: InDesign	Benson	X	38	38	0	27	11	38	0.1	\$ 11,226.94	100%	71%	29%	0%	100%		2.7
THS	Digital Design	ADOBE022	Adobe: Photoshop	Benson	X	58	58	0	53	5	58	0.1	\$ 22,038.07	100%	91%	9%	0%	100%		5.3
THS	Embry Riddle Dual Enroll	USINS001	Small UAS Safety Certification	Chatman	X	2	2	0	2	0	2	0.2	\$ 1,663.25	100%	100%	0%	0%	100%		0.4
THS	TV Production	ADOBE018	Adobe: Premiere Pro	Curtis	X	39	39	0	5	34	39	0.1	\$ 2,079.06	100%	13%	87%	0%	100%		0.5
THS	Web Development	ADOBE010	Adobe: Dreamweaver	Ely	X	9	9	0	7	2	9	0.2	\$ 5,821.38	100%	78%	22%	0%	100%		1.4
THS	Web Development	ADOBE011	Adobe: Flash	Ely	X	1	1	0	1	0	1	0.2	\$ 831.63	100%	100%	0%	0%	100%		0.2
THS	Web Development	ADOBE020	Adobe: Illustrator	Ely	X	1	1	0	1	0	1	0.1	\$ 415.81	100%	100%	0%	0%	100%		0.1
THS	Web Development	ADOBE022	Adobe: Photoshop	Ely	X	4	4	0	4	0	4	0.1	\$ 1,663.25	100%	100%	0%	0%	100%		0.4
THS	Digital Design	ADOBE011	Adobe: Flash	Ely	X	7	7	0	6	1	7	0.2	\$ 4,989.75	100%	86%	14%	0%	100%		1.2
THS	Digital Design	ADOBE020	Adobe: Illustrator	Ely	X	23	23	0	22	1	23	0.1	\$ 9,147.88	100%	96%	4%	0%	100%		2.2
THS	Digital Design	ADOBE021	Adobe: InDesign	Ely	X	50	50	0	42	8	50	0.1	\$ 17,464.13	100%	84%	16%	0%	100%		4.2
THS	Digital Design	ADOBE022	Adobe: Photoshop	Ely	X	1	1	0	1	0	1	0.1	\$ 415.81	100%	100%	0%	0%	100%		0.1
THS	Digital Design	ADOBE022	Adobe: Photoshop	Gilreath	X	72	72	0	26	46	72	0.1	\$ 10,811.13	100%	36%	64%	0%	100%		2.6
THS	Digital Info Tech	MICRO069	MOS Bundle	Gilreath	X	52	52	29	18	5	23	0.2	\$ 14,969.26	100%	78%	22%	56%	44%		3.6
THS	Patient Care Assisting	FDMQA002	C N A	Hall	X	27	27	0	27	0	27	0.1	\$ 11,226.94	100%	100%	0%	0%	100%		2.7
THS	Patient Care Assisting		CPR/AED/BLS for Healthcare Providers	Hall		27	27	0	27	0	27	0	\$ -	100%	100%	0%	0%	100%		0.0
THS	Culinary Arts	FRALA001	SafeStaff Food Handler Certification	Hietpas		63	63	0	63	0	63	0	\$ -	100%	100%	0%	0%	100%		0.0
THS	Culinary Arts	NRAEF003	ServSafe Manager	Hietpas	X	57	57	0	45	12	57	0.2	\$ 37,423.14	100%	79%	21%	0%	100%		9.0
THS	Fashion Design Services	ADOBE020	Adobe: Illustrator	Jones	X	11	11	0	3	8	11	0.1	\$ 1,247.44	100%	27%	73%	0%	100%		0.3
THS	Fashion Design Services	NOCTI003	NOCTI - Apparel & Text Prod & Mer	Jones		1	1	0	1	0	1	0	\$ -	100%	100%	0%	0%	100%		0.0
THS	Patient Care Assisting		CPR/AED/BLS for Healthcare Providers	Shimer		60	60	0	60	0	60	0	\$ -	100%	100%	0%	0%	100%		0.0
THS	Automotive Service Tech	FLADA001	FLADA	Soros	X	21	21	0	21	0	21	0.1	\$ 8,732.07	100%	100%	0%	0%	100%		2.1
THS	Digital Info Tech	MICRO069	MOS Bundle	Summy-Brown	X	61	61	20	34	7	41	0.2	\$ 28,275.26	100%	83%	17%	33%	67%		6.8
School Total:						716	716	49	521	146	667		\$ 204,164.03	100.0%	78.1%	21.9%	7%	93%	\$26,979.30	49.1

2017-18 Industry Certification Viera High School

School	Program	Cert #	Assessment	Teacher of Record	School Grade	# Students Identified	# Participants	# In Progress	# Passing	# Failing	# Completing Participants	Funding Weights	Potential Funding \$	% Participants	% Passing	% Failing	% In Progress	% Completing Participants	Cost of Assessments & Test Prep Used	Potential Bonus FTE Calculation
VHS	Early Childhood Ed	FLDCF004	Intro to Childcare Training Certificate	Anderson		14	14	0	8	6	14	0	\$ -	100%	57%	43%	0%	100%		0.0
VHS	Early Childhood Ed	FLDCF005	Staff Credential	Anderson		14	14	0	8	6	14	0	\$ -	100%	57%	43%	0%	100%		0.0
VHS	Early Childhood Ed		CPR/First Aid	Anderson		11	11	0	11	0	11	0	\$ -	100%	100%	0%	0%	100%		0.0
VHS	Digital Media/MM	ADOBE020	Adobe: Illustrator	Cole	X	1	1	0	1	0	1	1	\$ 4,158.13	100%	100%	0%	0%	100%		1.0
VHS	Digital Media/MM	ADOBE021	Adobe: InDesign	Cole	X	39	39	0	39	0	39	0.1	\$ 16,216.69	100%	100%	0%	0%	100%		3.9
VHS	Digital Media/MM	ADOBE022	Adobe: Photoshop	Cole	X	56	56	0	30	26	56	0.1	\$ 12,474.38	100%	54%	46%	0%	100%		3.0
VHS	Adv Tech Appl	TBOOM001	ToonBoom Harmony Premium	Cole	X	1	1	0	0	1	1	0.1	\$ -	100%	0%	100%	0%	100%		0.0
VHS	Adv Tech Appl	ADOBE022	Adobe: Photoshop	Cole	X	4	4	0	4	0	4	0.1	\$ 1,663.25	100%	100%	0%	0%	100%		0.4
VHS	Adv Tech Appl	ADOBE018	Adobe: Premiere Pro	Cole	X	40	40	0	27	13	40	0.1	\$ 11,226.94	100%	68%	33%	0%	100%		2.7
VHS	Finance Academy	MICRO069	MOS Bundle	Gammella	X	1	1	0	1	0	1	0.2	\$ 831.63	100%	100%	0%	0%	100%		0.2
VHS	Fashion/Interior Design	ADOBE020	Adobe: Illustrator	Humphrys	X	24	24	0	13	11	24	0.1	\$ 5,405.56	100%	54%	46%	0%	100%		1.3
VHS	Fashion/Interior Design	CARCH002	Chief Architect	Humphrys	X	22	22	0	16	6	22	0.2	\$ 13,306.01	100%	73%	27%	0%	100%		3.2
VHS	Health Science - Dental	NATHA003	CMAA	Johnston	X	27	27	0	24	3	27	0.1	\$ 9,979.50	100%	89%	11%	0%	100%		2.4
VHS	Health Science - Dental		CPR/AED/BLS for Healthcare Providers	Johnston		29	29	0	29	0	29	0	\$ -	100%	100%	0%	0%	100%		0.0
VHS	Comm Tech	ADOBE020	Adobe: Illustrator	Peregrina	X	82	82	0	62	20	82	0.1	\$ 25,780.39	100%	76%	24%	0%	100%		6.2
VHS	Comm Tech	ADOBE021	Adobe: InDesign	Peregrina	X	14	14	0	8	6	14	0.1	\$ 3,326.50	100%	57%	43%	0%	100%		0.8
VHS	Comm Tech	ADOBE022	Adobe: Photoshop	Peregrina	X	52	52	0	36	16	52	0.1	\$ 14,969.26	100%	69%	31%	0%	100%		3.6
VHS	Digital Info Tech	MICRO069	MOS Bundle	Reda	X	9	9	4	4	1	5	0.2	\$ 3,326.50	100%	80%	20%	44%	56%		0.8
VHS	Finance Academy	MICRO069	MOS Bundle	Reda	X	63	63	10	42	11	53	0.2	\$ 34,928.27	100%	79%	21%	16%	84%		8.4
VHS	Food Science	NRAEF003	ServSafe Manager	Scholle	X	12	12	0	9	3	12	0.2	\$ 7,484.63	100%	75%	25%	0%	100%		1.8
VHS	TV Production	ADOBE018	Adobe: Premiere Pro	Sivco	X	56	56	0	38	18	56	0.1	\$ 15,800.88	100%	68%	32%	0%	100%		3.8
VHS	Digital Info Tech	MICRO069	MOS Bundle	Vacca	X	29	29	12	16	1	17	0.2	\$ 13,306.01	100%	94%	6%	41%	59%		3.2
VHS	Accounting Appl	INTUT001	Intuit: Quick Books	Vacca	X	42	42	2	1	39	40	0.2	\$ 831.63	100%	3%	98%	5%	95%		0.2
VHS	Accounting Appl	MICRO069	MOS Bundle	Vacca	X	2	2	0	1	1	2	0.2	\$ 831.63	100%	50%	50%	0%	100%		0.2
VHS	Finance Academy	MICRO069	MOS Bundle	Vacca	X	2	2	0	2	0	2	0.2	\$ 1,663.25	100%	100%	0%	0%	100%		0.4
School Total:						646	646	28	430	188	618		\$ 197,511.03	100.0%	69.6%	30.4%	4%	96%	\$ 41,402.50	47.5

2017-18 Industry Certification West Shore High School

School	Program	Cert #	Assessment	Teacher of Record	School Grade	# Students Identified	# Participants	# In Progress	# Passing	# Failing	# Completing Participants	Funding Weights	Potential Funding \$	% Participants	% Passing	% Failing	% In Progress	% Completing Participants	Cost of Assessments & Test Prep Used	Potential Bonus FTE Calculation	
WSHS	AP STUD ART 2-D	ADOBE022	Adobe: Photoshop	Finch	X	22	22	0	17	5	22	0.1	\$ 7,068.82	100%	77%	23%	0%	100%		1.7	
WSHS	DIGITAL ART IMG2	ADOBE022	Adobe: Photoshop	Finch	X	2	2	0	2	0	2	0.1	\$ 831.63	100%	100%	0%	0%	100%		0.2	
School Total:						24	24	0	19	5	24		\$ 7,900.44	100.0%	79.2%	20.8%	0%	100%	\$ 1,079.00	1.9	

2017-18 Industry Certification AMI and Odyssey Charter

School	Program	Cert #	Assessment	Teacher of Record	School Grade	# Students Identified	# Participants	# In Progress	# Passing	# Failing	# Completing Participants	Funding Weights	Potential Funding \$	% Participants	% Passing	% Failing	% In Progress	% Completing Participants	Cost of Assessments & Test Prep Used	Potential Bonus FTE Calculation	
AMI Kids	Culinary Arts	NRAEF003	ServSafe Manager	Descoteaux	X	4	4	0	4	0	4	0.2	\$ 3,326.50	100%	100%	0%	100%	100%		0.8	
AMI Kids	Culinary Arts	NATHA002	Certified EKG Tech (CET)	Descoteaux	X	2	2	0	2	0	2	0.1	\$ 831.63	100%	100%	0%	100%	100%		0.2	
Brevard Virtual	Digital Info Tech	MICRO069	MOS Bundle	Chisholm, C	X	2	2	0	2	0	2	0.2	\$ 1,663.25	100%	100%	0%	100%	100%		0.4	
Brevard Virtual	Digital Info Tech	MICRO802	MS Office Specialist: Word	Chisholm, C	X	1	1	0	1	0	1	0.025	\$ 103.95	100%	100%	0%	100%	100%		0.0	
Odyssey Charter	Intrad Engr Design	ADESK011	Autodesk: Inventor	Grimaldi	X	19	19	7	5	7	12	0.2	\$ 4,158.13	100%	42%	58%	37%	63%		1.0	
School Total:						28	28	7	14	7	21		\$ 10,083.46	100.0%	67%	33.3%	25%	75%	\$ 1,162.00	2.4	

This page intentionally left blank.

Industry Certification Results By Middle/JR High School



This page intentionally left blank.

2017-18 Industry Certification Results Central Middle School

School	Program	Cert #	Assessment	Teacher of Record	School Grade	# Students Identified	# Participants	Didn't Test	# In Progress	# Passing	# Failing	# Completing Participants	Funding Weights	Potential Funding \$	% Participants	% Passing	% Failing	% In Progress	% Completing Participants	Cost of Assessments & Test Prep Used	Potential Bonus FTE Calculation
CMS	Cptr Appl Bus	CERT1803	IC3 - Computing Fund	Hrkach		36	36	0	0	5	31	36	0.025	\$ 519.77	100%	14%	86%	0%	100%		0.125
CMS	Cptr Appl Bus	CERT1804	IC3 - Key Applications	Hrkach		170	98	72	0	56	42	98	0.025	\$ 5,821.38	58%	57%	43%	0%	100%		1.400
CMS	Cptr Appl Bus	CERT1805	IC3 - Living Online	Hrkach		48	48	0	0	23	25	48	0.025	\$ 2,390.92	100%	48%	52%	0%	100%		0.575
CMS	Cptr Appl Bus	MICRO802	MS Office Specialist: Word	Hrkach		1	1	0	0	1	0	1	0.025	\$ 103.95	100%	100%	0%	0%	100%		0.025
CMS	Digital Info Tech	CERT1802	IC3 - Spark	Hrkach		1	1	0	0	1	0	1	0.025	\$ 103.95	100%	100%	0%	0%	100%		0.025
CMS	Digital Info Tech	CERT1803	IC3 - Computing Fund	Hrkach		7	7	0	0	3	4	7	0.025	\$ 311.86	100%	43%	57%	0%	100%		0.075
CMS	Digital Info Tech	CERT1804	IC3 - Key Applications	Hrkach		8	8	0	0	8	0	8	0.025	\$ 831.63	100%	100%	0%	0%	100%		0.200
CMS	Digital Info Tech	CERT1805	IC3 - Living Online	Hrkach		12	12	0	0	9	3	12	0.025	\$ 935.58	100%	75%	25%	0%	100%		0.225
CMS	Digital Info Tech	MICRO802	MS Office Specialist: Word	Hrkach		20	20	0	0	20	0	20	0.025	\$ 2,079.06	100%	100%	0%	0%	100%		0.500
CMS	Cptr Appl Bus	CERT1803	IC3 - Computing Fund	Kraus		6	6	0	0	3	3	6	0.025	\$ 311.86	100%	50%	50%	0%	100%		0.075
CMS	Cptr Appl Bus	CERT1804	IC3 - Key Applications	Kraus		165	92	73	0	64	28	92	0.025	\$ 6,653.00	56%	70%	30%	0%	100%		1.600
CMS	Cptr Appl Bus	CERT1805	IC3 - Living Online	Kraus		13	13	0	0	10	3	13	0.025	\$ 1,039.53	100%	77%	23%	0%	100%		0.250
				Digital Tools		487	342	145	0	203	139	342	0.300	\$ 21,102.49	93%	69%	31%	0%	100%		5.075
CMS	Digital Info Tech	MICRO017	MS Office Master	Hrkach	X	3	3	0	0	3	0	3	0.100	\$ 1,247.44	100%	100%	0%	0%	100%		0.300
CMS	Digital Info Tech	MICRO069	MOS Bundle	Hrkach	X	83	52	31	20	32	0	32	0.100	\$ 13,306.01	63%	100%	0%	38%	62%		3.200
				Certifications		86	55	31	20	35	0	35	0.200	\$ 14,553.44	81%	100%	0%	19%	81%		3.500
				School Total		573	397		20	238	139	377		\$ 35,655.94	69.3%	63.1%	36.9%	5%	95%	\$ 11,869.00	8.575
				Limited to .100 per student										\$ 32,433.39							7.800

2017-18 Industry Certification Results Cocoa High - Middle School

School	Program	Cert #	Assessment	Teacher of Record	School Grade	# Students Identified	# Participants	Didn't Test	# In Progress	# Passing	# Failing	# Completing Participants	Funding Weights	Potential Funding \$	% Participants	% Passing	% Failing	% In Progress	% Completing Participants	Cost of Assessments & Test Prep Used	Potential Bonus FTE Calculation
CHSMS	Cptr Appl Bus	CERT1804	IC3 - Key Applications	Dawkins		124	51	73	0	49	2	51	0.025	\$ 5,093.71	41%	96%	4%	0%	100%		1.225
CHSMS	Digital Info Tech	MICRO801	MS Office Specialist: Excel	Nauman		2	2	0	0	2	0	2	0.025	\$ 207.91	100%	100%	0%	0%	100%		0.050
CHSMS	Digital Info Tech	MICRO802	MS Office Specialist: Word	Nauman		8	8	0	0	8	0	8	0.025	\$ 831.63	100%	100%	0%	0%	100%		0.200
				Digital Tools		134	61	73	0	59	2	61	0.075	\$ 6,133.24	80%	99%	1%	0%	100%		1.475
CHSMS	Digital Info Tech	MICRO069	MOS Bundle	Nauman	X	21	19	2	8	11	0	11	0.100	\$ 4,573.94	90%	100%	0%	42%	58%		1.100
				Certifications		21	19	2	8	11	0	11	0.100	\$ 4,573.94	90%	100%	0%	42%	58%		1.100
				School Total		155	80	75	8	70	2	72		\$ 10,707.18	51.6%	97%	2.8%	10%	90%	\$ 2,282.50	2.575

2017-18 Industry Certification Results Cocoa Beach Jr/Sr - Middle School

School	Program	Cert #	Assessment	Teacher of Record	School Grade	# Students Identified	# Participants	Didn't Test	# In Progress	# Passing	# Failing	# Completing Participants	Funding Weights	Potential Funding \$	% Participants	% Passing	% Failing	% In Progress	% Completing Participants	Cost of Assessments & Test Prep Used	Potential Bonus FTE Calculation
CBHSMS	Cptr Appl Bus	CERTI803	IC3 - Computing Fund	Moore		13	13	0	0	5	8	13	0.025	\$ 519.77	100%	38%	62%	0%	100%		0.125
CBHSMS	Cptr Appl Bus	CERTI804	IC3 - Key Applications	Moore		69	68	1	0	37	31	68	0.025	\$ 3,846.27	99%	54%	46%	0%	100%		0.925
CBHSMS	Cptr Appl Bus	CERTI805	IC3 - Living Online	Moore		28	28	0	0	18	10	28	0.025	\$ 1,871.16	100%	64%	36%	0%	100%		0.450
CBHSMS	Cptr Appl Bus	CERTI803	IC3 - Computing Fund	Walz		1	1	0	0	0	1	1	0.025	\$ -	100%	0%	100%	0%	100%		0.000
CBHSMS	Cptr Appl Bus	CERTI804	IC3 - Key Applications	Walz		43	38	5	0	19	19	38	0.025	\$ 1,975.11	88%	50%	50%	0%	100%		0.475
CBHSMS	Cptr Appl Bus	CERTI805	IC3 - Living Online	Walz		21	21	0	0	10	11	21	0.025	\$ 1,039.53	100%	48%	52%	0%	100%		0.250
				Digital Tools		175	169	6	0	89	80	169	0.150	\$ 9,251.83	98%	42%	58%	0%	100%		2.225
				School Total		175	169	6	0	89	80	169		\$ 9,251.83	98%	42%	58%	0%	100%	\$ 4,772.50	2.225

2017-18 Industry Certification Results DeLaura Middle School

School	Program	Cert #	Assessment	Teacher of Record	School Grade	# Students Identified	# Participants	Didn't Test	# In Progress	# Passing	# Failing	# Completing Participants	Funding Weights	Potential Funding \$	% Participants	% Passing	% Failing	% In Progress	% Completing Participants	Cost of Assessments & Test Prep Used	Potential Bonus FTE Calculation
DMS	Cptr Appl Bus	CERT1804	IC3 - Key Applications	Bryant		305	199	106	0	106	93	199	0.025	\$ 11,019.04	65%	53%	47%	0%	100%		2.650
				Digital Tools		305	199	106	0	106	93	199	0.025	\$ 11,019.04	65%	53%	47%	0%	100%		2.650
				School Total		305	199	106	0	106	93	199		\$ 11,019.04	65.2%	53.3%	46.7%	0%	100%	\$ 12,596.00	2.650

2017-18 Industry Certification Results Hoover Middle School

School	Program	Cert #	Assessment	Teacher of Record	School Grade	# Students Identified	# Participants	Didn't Test	# In Progress	# Passing	# Failing	# Completing Participants	Funding Weights	Potential Funding \$	% Participants	% Passing	% Failing	% In Progress	% Completing Participants	Cost of Assessments & Test Prep Used	Potential Bonus FTE Calculation
HMS	Cptr Appl Bus	CERT1804	IC3 - Key Applications	Weaver		121	73	48	0	32	41	73	0.025	\$ 3,326.50	60%	44%	56%	0%	100%		0.800
HMS	Digital Info Tech	CERT1804	IC3 - Key Applications	Weaver		3	3	0	0	0	3	3	0.025	\$ -	100%	0%	100%	0%	100%		0.000
HMS	Digital Info Tech	MICRO802	MS Office Specialist: Word	Weaver		8	8	0	0	8	0	8	0.025	\$ 831.63	100%	100%	0%	0%	100%		0.200
				Digital Tools		132	84	48	0	40	44	84	0.075	\$ 4,158.13	87%	48%	52%	0%	100%		1.000
HMS	Digital Info Tech		MOS Bundle	Weaver	X	71	63	8	8	55	0	55	0.100	\$ 22,869.70	89%	100%	0%	13%	87%		5.500
				Certifications		71	63	8	8	55	0	55	0.100	\$ 22,869.70	89%	100%	0%	13%	87%		5.500
				School Total		203	147	56	8	95	44	139		\$ 27,027.82	72.4%	68.3%	31.7%	5%	95%	\$ 7,221.00	6.500

2017-18 Industry Certification Results Jackson Middle School

School	Program	Cert #	Assessment	Teacher of Record	School Grade	# Students Identified	# Participants	Didn't Test	# In Progress	# Passing	# Failing	# Completing Participants	Funding Weights	Potential Funding \$	% Participants	% Passing	% Failing	% In Progress	% Completing Participants	Cost of Assessments & Test Prep Used	Potential Bonus FTE Calculation
JAMS	Cptr Appl Bus	CERTI802	IC3 - Spark	Hendrix		1	1	0	0	1	0	1	0.025	\$ 103.95	100%	100%	0%	0%	100%		0.025
JAMS	Cptr Appl Bus	CERTI804	IC3 - Key Applications	Hendrix		146	135	11	0	101	34	135	0.025	\$ 10,499.27	92%	75%	25%	0%	100%		2.525
JAMS	Digital Info Tech	CERTI804	IC3 - Key Applications	Hendrix		1	1	0	0	1	0	1	0.025	\$ 103.95	100%	100%	0%	0%	100%		0.025
JAMS	Digital Info Tech	MICRO801	MS Office Specialist: Excel	Hendrix		1	1	0	0	1	0	1	0.025	\$ 103.95	100%	100%	0%	0%	100%		0.025
JAMS	Digital Info Tech	MICRO802	MS Office Specialist: Word	Hendrix		22	22	0	0	22	0	22	0.025	\$ 2,286.97	100%	100%	0%	0%	100%		0.550
				Digital Tools		171	160	11	0	126	34	160	0.125	\$ 13,098.10	98%	95%	5%	0%	100%		3.150
JAMS	Digital Info Tech	MICRO069	MOS Bundle	Hendrix	X	33	31	2	22	9	0	9	0.100	\$ 3,742.31	94%	100%	0%	71%	29%		0.900
				Certifications		33	31	2	22	9	0	9	0.100	\$ 3,742.31	94%	100%	0%	71%	29%		0.900
				School Total		204	191	13	22	135	34	169		\$ 16,840.41	93.6%	79.9%	20.1%	12%	88%	\$ 7,096.50	4.050

2017-18 Industry Certification Results Jefferson Middle School

School	Program	Cert #	Assessment	Teacher of Record	School Grade	# Students Identified	# Participants	Didn't Test	# In Progress	# Passing	# Failing	# Completing Participants	Funding Weights	Potential Funding \$	% Participants	% Passing	% Failing	% In Progress	% Completing Participants	Cost of Assessments & Test Prep Used	Potential Bonus FTE Calculation
JEMS	Cptr Appl Bus	CERTI803	IC3 -Computer Funadamental	Buchanan		2	2	0	0	0	2	2	0.025	\$ -	100%	0%	100%	0%	100%		0.000
JEMS	Cptr Appl Bus	CERTI804	IC3 - Key Applications	Buchanan		113	85	28	0	50	35	85	0.025	\$ 5,197.66	75%	59%	41%	0%	100%		1.250
JEMS	Cptr Appl Bus	CERTI805	IC3 - Living Online	Buchanan		1	1	0	0	0	1	1	0.025	\$ -	100%	0%	100%	0%	100%		0.000
JEMS	Digital Info Tech	CERTI804	IC3 - Key Applications	Buchanan		1	1	0	0	0	1	1	0.025	\$ -	100%	0%	100%	0%	100%		0.000
JEMS	Digital Info Tech	MICRO801	MS Office Specialist: Excel	Buchanan		4	4	0	0	4	0	4	0.025	\$ 415.81	100%	100%	0%	0%	100%		0.100
JEMS	Digital Info Tech	MICRO802	MS Office Specialist: Word	Buchanan		22	22	0	0	22	0	22	0.025	\$ 2,286.97	100%	100%	0%	0%	100%		0.550
				Digital Tools		143	115	28	0	76	39	115	0.150	\$ 7,900.44	96%	43%	57%	0%	100%		1.900
JEMS	Digital Info Tech	MICRO069	MOS Bundle	Buchanan	X	58	35	23	22	13	0	13	0.100	\$ 5,405.56	60%	100%	0%	63%	37%		1.300
				Certifications		58	35	23	22	13	0	13	0.100	\$ 5,405.56	60%	100%	0%	63%	37%		1.300
				School Total		201	150	51	22	89	39	128		\$ 13,306.01	74.6%	69.5%	30.5%	15%	85%	\$ 5,976.00	3.200

2017-18 Industry Certification Results Johnson Middle School

School	Program	Cert #	Assessment	Teacher of Record	School Grade	# Students Identified	# Participants	Didn't Test	# In Progress	# Passing	# Failing	# Completing Participants	Funding Weights	Potential Funding \$	% Participants	% Passing	% Failing	% In Progress	% Completing Participants	Cost of Assessments & Test Prep Used	Potential Bonus FTE Calculation
JOMS	Cptr Appl Bus	CERT1804	IC3 - Key Applications	Williams, A		150	6	144	0	1	5	6	0.025	\$ 103.95	4%	17%	83%	0%	100%		0.025
JOMS	Cptr Appl Bus	MICRO802	MS Office Specialist: Word	Williams, A		1	1	0	0	1	0	1	0.025	\$ 103.95	100%	100%	0%	0%	100%		0.025
JOMS	Digital Info Tech	MICRO801	MS Office Specialist: Excel	Williams, A		7	7	0	0	7	0	7	0.025	\$ 727.67	100%	100%	0%	0%	100%		0.175
JOMS	Digital Info Tech	MICRO802	MS Office Specialist: Word	Williams, A		9	9	0	0	9	0	9	0.025	\$ 935.58	100%	100%	0%	0%	100%		0.225
				Digital Tools		167	23	144	0	18	5	23	0.100	\$ 1,871.16	100%	100%	0%	0%	100%		0.450
JOMS	Digital Info Tech	MICRO069	MOS Bundle	Williams, A	X	41	16	25	10	6	0	6	0.100	\$ 2,494.88	39%	100%	0%	63%	38%		0.600
				Certifications		41	16	25	10	6	0	6	0.100	\$ 2,494.88	70%	100%	0%	31%	69%		0.600
				School Total		208	39	169	10	24	5	29		\$ 4,366.03	18.8%	82.8%	17.2%	26%	74%	\$ 1,867.50	1.050

2017-18 Industry Certification Results Kennedy Middle School

School	Program	Cert #	Assessment	Teacher of Record	School Grade	# Students Identified	# Participants	Didn't Test	# In Progress	# Passing	# Failing	# Completing Participants	Funding Weights	Potential Funding \$	% Participants	% Passing	% Failing	% In Progress	% Completing Participants	Cost of Assessments & Test Prep Used	Potential Bonus FTE Calculation
KMS	Cptr Appl Bus	CERT1804	IC3 - Key Applications	Reaves		148	72	76	0	66	6	72	0.025	\$ 6,860.91	49%	92%	8%	0%	100%		1.650
KMS	Digital Info Tech	MICRO801	MS Office Specialist: Excel	Reaves		2	2	0	0	2	0	2	0.025	\$ 207.91	100%	100%	0%	0%	100%		0.050
KMS	Digital Info Tech	MICRO802	MS Office Specialist: Word	Reaves		2	2	0	0	2	0	2	0.025	\$ 207.91	100%	100%	0%	0%	100%		0.050
				Digital Tools		152	76	76	0	70	6	76	0.075	\$ 7,276.72	100%	100%	0%	0%	100%		1.750
KMS	Digital Info Tech	MICRO069	MOS Bundle	Reaves	X	52	52	0	3	49	0	49	0.100	\$ 20,374.82	100%	100%	0%	6%	94%		4.900
				Certifications		52	52	0	3	49	0	49	0.100	\$ 20,374.82	100%	100%	0%	3%	97%		4.900
				School Total		204	128	76	3	119	6	125		\$ 27,651.54	62.7%	95.2%	4.8%	2%	98%	\$ 7,242.50	6.650

2017-18 Industry Certification Results

Madison Middle School

School	Program	Cert #	Assessment	Teacher of Record	School Grade	# Students Identified	# Participants	Didn't Test	# In Progress	# Passing	# Failing	# Completing Participants	Funding Weights	Potential Funding \$	% Participants	% Passing	% Failing	% In Progress	% Completing Participants	Cost of Assessments & Test Prep Used	Potential Bonus FTE Calculation
MAMS	Cptr Appl Bus	CERTI803	IC3 - Computing Fund	Lee		14	14	0	0	2	12	14	0.025	\$ 207.91	100%	14%	86%	0%	100%		0.050
MAMS	Cptr Appl Bus	CERTI804	IC3 - Key Applications	Lee		130	77	53	0	34	43	77	0.025	\$ 3,534.41	59%	44%	56%	0%	100%		0.850
MAMS	Cptr Appl Bus	CERTI805	IC3 - Living Online	Lee		2	2	0	0	1	1	2	0.025	\$ 103.95	100%	50%	50%	0%	100%		0.025
MAMS	Digital Info Tech	CERTI804	IC3 - Key Applications	Lee		1	1	0	0	0	1	1	0.025	\$ -	100%	0%	100%	0%	100%		0.000
MAMS	Digital Info Tech	MICRO802	MS Office Specialist: Word	Lee		16	16	0	0	16	0	16	0.025	\$ 1,663.25	100%	100%	0%	0%	100%		0.400
				Digital Tools		163	110	53	0	53	57	110	0.125	\$ 5,509.52	92%	42%	58%	0%	100%		1.325
MAMS	Digital Info Tech	MICRO069	MOS Bundle	Lee	X	44	22	22	16	6	0	6	0.100	\$ 2,494.88	50%	100%	0%	73%	27%		0.600
				Certifications		44	22	22	16	6	0	6	0.100	\$ 2,494.88	50%	100%	0%	73%	27%		0.600
				School Total		207	132	75	16	59	57	116		\$ 8,004.39	63.8%	50.9%	49.1%	12%	88%	\$ 5,602.50	1.925

2017-18 Industry Certification McNair Middle School

School	Program	Cert #	Assessment	Teacher of Record	School Grade	# Students Identified	# Participants	Didn't Test	# In Progress	# Passing	# Failing	# Completing Participants	Funding Weights	Potential Funding \$	% Participants	% Passing	% Failing	% In Progress	% Completing Participants	Cost of Assessments & Test Prep Used	Potential Bonus FTE Calculation
				Digital Tools		0	0		0	0	0	0	0.000	\$ -	0%	0%	0%	0%	0%	\$0.00	0.000
				School Total		0	0		0	0	0	0		\$ -	0.0%	0.0%	0.0%	0%	0%	\$0.00	0.000

2017-18 Industry Certification Results Space Coast Jr/Sr - Middle School

School	Program	Cert #	Assessment	Teacher of Record	School Grade	# Students Identified	# Participants	Didn't Test	# In Progress	# Passing	# Failing	# Completing Participants	Funding Weights	Potential Funding \$	% Participants	% Passing	% Failing	% In Progress	% Completing Participants	Cost of Assessments & Test Prep Used	Potential Bonus FTE Calculation
SCHSMS	Cptr Appl Bus	CERTI803	IC3 - Computing Fund	Stoppelbein		17	17	0	0	7	10	17	0.025	\$ 727.67	100%	41%	59%	0%	100%		0.175
SCHSMS	Cptr Appl Bus	CERTI804	IC3 - Key Applications	Stoppelbein		57	57	0	0	40	17	57	0.025	\$ 4,158.13	100%	70%	30%	0%	100%		1.000
SCHSMS	Cptr Appl Bus	CERTI805	IC3 - Living Online	Stoppelbein		4	4	0	0	4	0	4	0.025	\$ 415.81	100%	100%	0%	0%	100%		0.100
SCHSMS	Digital Info Tech	MICRO801	MS Office Specialist: Excel	Stoppelbein		6	6	0	0	6	0	6	0.025	\$ 623.72	100%	100%	0%	0%	100%		0.150
				Digital Tools		84	84	0	0	57	27	84	0.100	\$ 5,925.33	100%	78%	22%	0%	100%		1.425
SCHSMS	Digital Info Tech	MICRO069	MOS Bundle	Stoppelbein	X	20	9	11	6	3	0	3	0.100	\$ 1,247.44	45%	100%	0%	67%	33%		0.300
				Certifications		20	9	11	6	3	0	3	0.100	\$ 1,247.44	45%	100%	0%	67%	33%		0.300
				School Total		104	93	11	6	60	27	87	0.2	\$ 7,172.77	89%	69%	31%	6%	94%	\$ 2,241.00	1.725

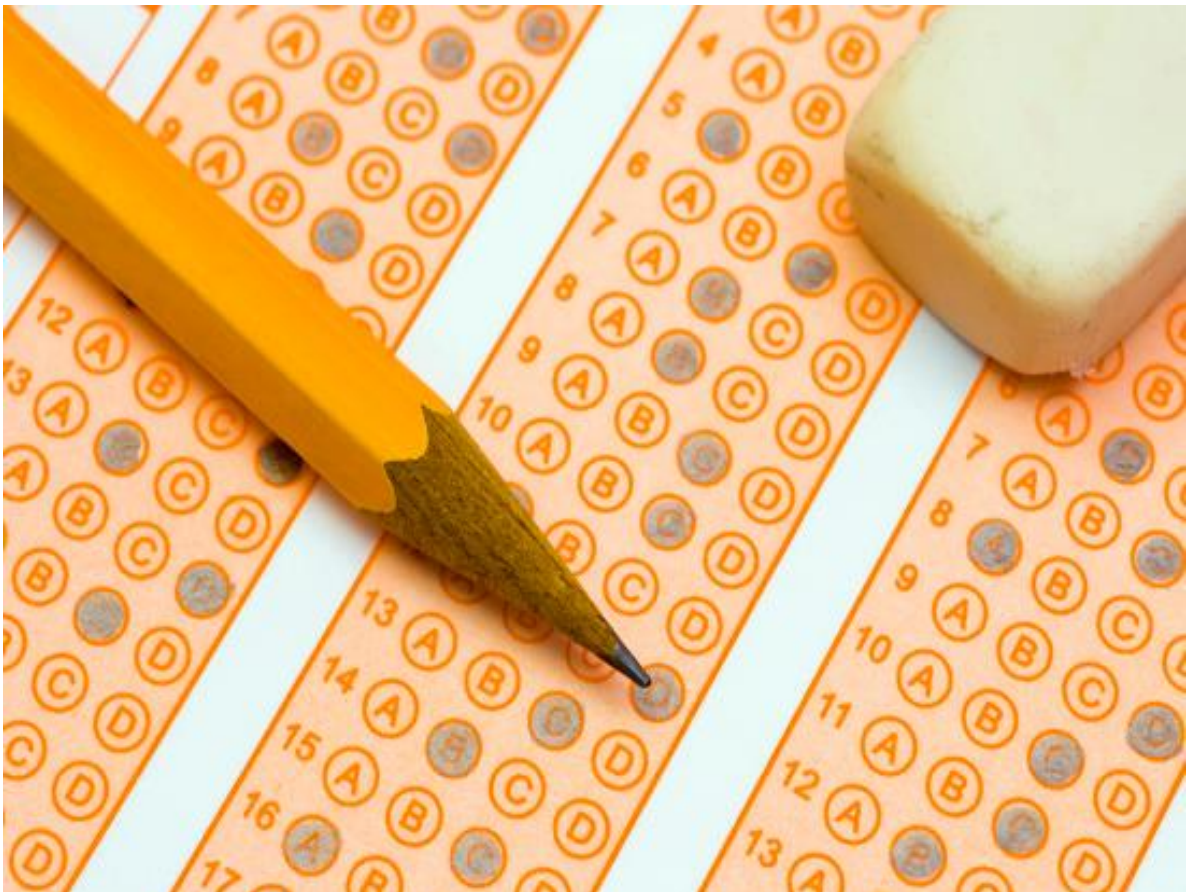
2017-18 Industry Certification Results Stone Middle School

School	Program	Cert #	Assessment	Teacher of Record	School Grade	# Students Identified	# Participants	Didn't Test	# In Progress	# Passing	# Failing	# Completing Participants	Funding Weights	Potential Funding \$	% Participants	% Passing	% Failing	% In Progress	% Completing Participants	Cost of Assessments & Test Prep Used	Potential Bonus FTE Calculation
STMS	Digital Info Tech	MICRO801	MS Office Specialist: Excel	Gelzinis		40	40	0	39	1	0	1	0.025	\$ 103.95	100%	100%	0%	98%	3%		0.025
STMS	Digital Info Tech	MICRO802	MS Office Specialist: Word	Gelzinis		11	11	0	0	11	0	11	0.025	\$ 1,143.48	100%	100%	0%	0%	100%		0.275
				Digital Tools		51	51	0	39	12	0	12	0.05	\$ 1,247.44	100%	100%	0%	49%	51%		0.300
				School Total		51	51	0	39	12	0	12		\$ 1,247.44	100.0%	100.0%	0.0%	76%	24%	\$ 1,535.50	0.300

2017-18 Industry Certification Results Southwest Middle School

School	Program	Cert #	Assessment	Teacher of Record	School Grade	# Students Identified	# Participants	Didn't Test	# In Progress	# Passing	# Failing	# Completing Participants	Funding Weights	Potential Funding \$	% Participants	% Passing	% Failing	% In Progress	% Completing Participants	Cost of Assessments & Test Prep Used	Potential Bonus FTE Calculation
SWMS	Cptr Appl Bus	CERTI803	IC3 - Computing Fund	Merrell		23	23	0	0	2	21	23	0.025	\$ 207.91	100%	9%	91%	0%	100%		0.050
SWMS	Cptr Appl Bus	CERTI804	IC3 - Key Applications	Merrell		216	176	40	0	115	61	176	0.025	\$ 11,954.61	81%	65%	35%	0%	100%		2.875
SWMS	Cptr Appl Bus	CERTI805	IC3 - Living Online	Merrell		74	74	0	0	31	43	74	0.025	\$ 3,222.55	100%	42%	58%	0%	100%		0.775
SWMS	Digital Info Tech	CERTI804	IC3 - Key Applications	Merrell		10	10	0	0	2	8	10	0.025	\$ 207.91	100%	20%	80%	0%	100%		0.050
SWMS	Digital Info Tech	MICRO801	MS Office Specialist: Excel	Merrell		4	4	0	0	4	0	4	0.025	\$ 415.81	100%	100%	0%	0%	100%		0.100
SWMS	Digital Info Tech	MICRO802	MS Office Specialist: Word	Merrell		9	9	0	0	9	0	9	0.025	\$ 935.58	100%	100%	0%	0%	100%		0.225
				Digital Tools		336	296	40	0	163	133	296	0.150	\$ 16,944.37	97%	56%	44%	0%	100%		4.075
SWMS	Digital Info Tech	MICRO069	MOS Bundle	Merrell	X	38	31	7	10	20	1	21	0.100	\$ 8,316.25	82%	95%	5%	32%	68%		2.000
				Certifications		38	31	7	10	20	1	21	0.100	\$ 8,316.25	95%	88%	12%	8%	92%		2.000
				School Total		374	327	47	10	183	134	317		\$ 25,260.62	87.4%	57.7%	42.3%	3%	97%	\$ 9,337.50	6.075
				Limited to .100 per student										\$ 24,948.76							6.000

High School Industry Certification Results By Assessment



This page intentionally left blank.

2017-18 Industry Certification HS Results by Assessment

Assessment	School	Program	School Grade	# Students Identified	# Participants	# In Progress	# Passing	# Failing	# Completing Participants	Funding Weights	Potential CAPE Funding \$	% Participants	% Passing	% Failing	% In Progress	% Completing Participants	Potential Bonus FTE Calculation
Adobe: Dreamweaver	BHS	Digital Design	X	7	7	0	5	2	7	0.2	\$ 4,158.13	100%	71%	29%	0%	100%	1.0
	CHS	Web Development	X	6	6	0	2	4	6	0.2	\$ 1,663.25	100%	33%	67%	0%	100%	0.4
	EGHS	Digital Media/MM	X	1	1	0	1	0	1	0.2	\$ 831.63	100%	100%	0%	0%	100%	0.2
	MHS	Web Development	X	38	38	0	28	10	38	0.2	\$ 23,285.51	100%	74%	26%	0%	100%	5.6
	MIHS	Web Development	X	36	36	0	36	0	36	0.2	\$ 29,938.51	100%	100%	0%	0%	100%	7.2
	PBMS	Digital Media/MM	X	1	1	0	0	1	1	0.2	\$ -	100%	0%	100%	0%	100%	0.0
	SHS	Digital Media/MM	X	1	1	0	1	0	1	0.2	\$ 831.63	100%	100%	0%	0%	100%	0.2
	THS	Digital Design	X	1	1	0	0	1	1	0.2	\$ -	100%	0%	100%	0%	100%	0.0
Adobe: Flash	THS	Web Development	X	9	9	0	7	2	9	0.2	\$ 5,821.38	100%	78%	22%	0%	100%	1.4
	BHS	Digital Design	X	18	18	2	11	5	16	0.2	\$ 9,147.88	100%	69%	31%	11%	89%	2.2
	CHS	Web Development	X	1	1	0	0	1	1	0.2	\$ -	100%	0%	100%	0%	100%	0.0
	MHS	Web Development	X	34	34	0	22	12	34	0.2	\$ 18,295.76	100%	65%	35%	0%	100%	4.4
	MIHS	Digital Design	X	2	2	0	0	2	2	0.2	\$ -	100%	0%	100%	0%	100%	0.0
	MIHS	Web Development	X	22	22	0	21	1	22	0.2	\$ 17,464.13	100%	95%	5%	0%	100%	4.2
	SHS	Digital Media/MM	X	1	1	0	1	0	1	0.2	\$ 831.63	100%	100%	0%	0%	100%	0.2
	THS	Digital Design	X	12	12	0	8	4	12	0.2	\$ 6,653.00	100%	67%	33%	0%	100%	1.6
Adobe: Illustrator	THS	Digital Design	X	7	7	0	6	1	7	0.2	\$ 4,989.75	100%	86%	14%	0%	100%	1.2
	THS	Web Development	X	1	1	0	1	0	1	0.2	\$ 831.63	100%	100%	0%	0%	100%	0.2
	BHS	Digital Design	X	41	41	0	33	8	41	0.1	\$ 13,721.82	100%	80%	20%	0%	100%	3.3
	CHS	Digital Design	X	6	6	0	0	6	6	0.1	\$ -	100%	0%	100%	0%	100%	0.0
	EGHS	Digital Media/MM	X	47	47	0	13	34	47	0.1	\$ 5,405.56	100%	28%	72%	0%	100%	1.3
	EHS	Digital Design	X	44	44	0	31	13	44	0.1	\$ 12,890.19	100%	70%	30%	0%	100%	3.1
	HHS	Digital Media/MM	X	10	10	0	7	3	10	0.1	\$ 2,910.69	100%	70%	30%	0%	100%	0.7
	MHS	Digital Design	X	3	3	0	2	1	3	0.1	\$ 831.63	100%	67%	33%	0%	100%	0.2
	MIHS	Digital Design	X	15	15	0	13	2	15	0.1	\$ 5,405.56	100%	87%	13%	0%	100%	1.3
	PBMS	Digital Media/MM	X	9	9	3	0	6	6	0.1	\$ -	100%	0%	100%	33%	67%	0.0
	RHS	Digital Design	X	70	70	0	37	33	70	0.1	\$ 15,385.07	100%	53%	47%	0%	100%	3.7
	SHS	Digital Media/MM	X	28	28	3	12	13	25	0.1	\$ 4,989.75	100%	48%	52%	11%	89%	1.2
	THS	Digital Design	X	18	18	0	17	1	18	0.1	\$ 7,068.82	100%	94%	6%	0%	100%	1.7
THS	Digital Design	X	23	23	0	22	1	23	0.1	\$ 9,147.88	100%	96%	4%	0%	100%	2.2	
THS	Fashion Design Services	X	11	11	0	3	8	11	0.1	\$ 1,247.44	100%	27%	73%	0%	100%	0.3	
THS	Web Development	X	1	1	0	1	0	1	0.1	\$ 415.81	100%	100%	0%	0%	100%	0.1	
VHS	Comm Tech	X	82	82	0	62	20	82	0.1	\$ 25,780.39	100%	76%	24%	0%	100%	6.2	
VHS	Digital Media/MM	X	1	1	0	1	0	1	1	\$ 4,158.13	100%	100%	0%	0%	100%	1.0	
VHS	Fashion/Interior Design	X	24	24	0	13	11	24	0.1	\$ 5,405.56	100%	54%	46%	0%	100%	1.3	

2017-18 Industry Certification HS Results by Assessment

Assessment	School	Program	School Grade	# Students Identified	# Participants	# In Progress	# Passing	# Failing	# Completing Participants	Funding Weights	Potential CAPE Funding \$	% Participants	% Passing	% Failing	% In Progress	% Completing Participants	Potential Bonus FTE Calculation
Adobe: InDesign	AHS	Digital Media/MM	X	43	43	0	10	33	43	0.1	\$ 4,158.13	100%	23%	77%	0%	100%	1.0
	BHS	Digital Design	X	39	39	10	26	3	29	0.1	\$ 10,811.13	100%	90%	10%	26%	74%	2.6
	CBHS	Marketing Management	X	9	9	0	0	9	9	0.1	\$ -	100%	0%	100%	0%	100%	0.0
	CHS	Digital Design	X	16	16	0	1	15	16	0.1	\$ 415.81	100%	6%	94%	0%	100%	0.1
	EGHS	Digital Media/MM	X	9	9	0	1	8	9	0.1	\$ 415.81	100%	11%	89%	0%	100%	0.1
	EHS	Digital Design	X	47	47	0	36	11	47	0.1	\$ 14,969.26	100%	77%	23%	0%	100%	3.6
	HHS	Digital Media/MM	X	5	5	0	3	2	5	0.1	\$ 1,247.44	100%	60%	40%	0%	100%	0.3
	MHS	Digital Design	X	42	42	0	28	14	42	0.1	\$ 11,642.76	100%	67%	33%	0%	100%	2.8
	MIHS	Digital Design	X	27	27	0	27	0	27	0.1	\$ 11,226.94	100%	100%	0%	0%	100%	2.7
	MIHS	Hosp & Tourism	X	5	5	0	5	0	5	0.1	\$ 2,079.06	100%	100%	0%	0%	100%	0.5
	RHS	Digital Design	X	10	10	0	7	3	10	0.1	\$ 2,910.69	100%	70%	30%	0%	100%	0.7
	SHS	Digital Media/MM	X	24	24	5	10	9	19	0.1	\$ 4,158.13	100%	53%	47%	21%	79%	1.0
	SHS	Marketing Management	X	10	10	4	3	3	6	0.1	\$ 1,247.44	100%	50%	50%	40%	60%	0.3
	THS	Digital Design	X	38	38	0	27	11	38	0.1	\$ 11,226.94	100%	71%	29%	0%	100%	2.7
	THS	Digital Design	X	50	50	0	42	8	50	0.1	\$ 17,464.13	100%	84%	16%	0%	100%	4.2
	VHS	Comm Tech	X	14	14	0	8	6	14	0.1	\$ 3,326.50	100%	57%	43%	0%	100%	0.8
VHS	Digital Media/MM	X	39	39	0	39	0	39	0.1	\$ 16,216.69	100%	100%	0%	0%	100%	3.9	
Adobe: Photoshop	AHS	Digital Media/MM	X	62	62	0	32	30	62	0.1	\$ 13,306.01	100%	52%	48%	0%	100%	3.2
	BHS	Digital Design	X	20	20	0	20	0	20	0.1	\$ 8,316.25	100%	100%	0%	0%	100%	2.0
	CHS	Digital Info Tech	X	2	2	0	1	1	2	0.1	\$ 415.81	100%	50%	50%	0%	100%	0.1
	EGHS	Digital Media/MM	X	83	83	0	34	49	83	0.1	\$ 14,137.63	100%	41%	59%	0%	100%	3.4
	EHS	Digital Design	X	36	36	0	34	2	36	0.1	\$ 14,137.63	100%	94%	6%	0%	100%	3.4
	HHS	Digital Media/MM	X	100	100	0	48	52	100	0.1	\$ 19,959.01	100%	48%	52%	0%	100%	4.8
	MHS	Digital Design	X	110	110	0	56	54	110	0.1	\$ 23,285.51	100%	51%	49%	0%	100%	5.6
	MHS	Web Development	X	11	11	0	7	4	11	0.1	\$ 2,910.69	100%	64%	36%	0%	100%	0.7
	MIHS	Digital Design	X	9	9	0	9	0	9	0.1	\$ 3,742.31	100%	100%	0%	0%	100%	0.9
	MIHS	Hosp & Tourism	X	1	1	0	1	0	1	0.1	\$ 415.81	100%	100%	0%	0%	100%	0.1
	PBMS	Digital Media/MM	X	85	85	1	15	69	84	0.1	\$ 6,237.19	100%	18%	82%	1%	99%	1.5
	RHS	Digital Design	X	69	69	2	30	37	67	0.1	\$ 12,474.38	100%	45%	55%	3%	97%	3.0
	SCHS	TV Production	X	1	1	0	0	1	1	0.1	\$ -	100%	0%	100%	0%	100%	0.0
	SHS	Digital Media/MM	X	52	52	5	20	27	47	0.1	\$ 8,316.25	100%	43%	57%	10%	90%	2.0
	THS	Digital Design	X	58	58	0	53	5	58	0.1	\$ 22,038.07	100%	91%	9%	0%	100%	5.3
	THS	Digital Design	X	1	1	0	1	0	1	0.1	\$ 415.81	100%	100%	0%	0%	100%	0.1
	THS	Digital Design	X	72	72	0	26	46	72	0.1	\$ 10,811.13	100%	36%	64%	0%	100%	2.6
	THS	Web Development	X	4	4	0	4	0	4	0.1	\$ 1,663.25	100%	100%	0%	0%	100%	0.4
	VHS	Adv Tech Appl	X	4	4	0	4	0	4	0.1	\$ 1,663.25	100%	100%	0%	0%	100%	0.4
	VHS	Comm Tech	X	52	52	0	36	16	52	0.1	\$ 14,969.26	100%	69%	31%	0%	100%	3.6
VHS	Digital Media/MM	X	56	56	0	30	26	56	0.1	\$ 12,474.38	100%	54%	46%	0%	100%	3.0	
WSHS	AP STUD ART 2-D	X	22	22	0	17	5	22	0.1	\$ 7,068.82	100%	77%	23%	0%	100%	1.7	
WSHS	DIGITAL ART IMG2	X	2	2	0	2	0	2	0.1	\$ 831.63	100%	100%	0%	0%	100%	0.2	

2017-18 Industry Certification HS Results by Assessment

Assessment	School	Program	School Grade	# Students Identified	# Participants	# In Progress	# Passing	# Failing	# Completing Participants	Funding Weights	Potential CAPE Funding \$	% Participants	% Passing	% Failing	% In Progress	% Completing Participants	Potential Bonus FTE Calculation
Adobe: Premiere Pro	AHS	Journalism	X	22	22	0	0	22	22	0.1	\$ -	100%	0%	100%	0%	100%	0.0
	BHS	Digital Design	X	4	4	0	1	3	4	0.2	\$ 831.63	100%	25%	75%	0%	100%	0.2
	BHS	TV Production	X	63	63	0	47	16	63	0.1	\$ 19,543.20	100%	75%	25%	0%	100%	4.7
	CHS	Digital Design	X	1	1	0	0	1	1	0.1	\$ -	100%	0%	100%	0%	100%	0.0
	EGHS	Digital Media/MM	X	112	112	0	20	92	112	0.1	\$ 8,316.25	100%	18%	82%	0%	100%	2.0
	EHS	Digital Design	X	1	1	0	0	1	1	0.1	\$ -	100%	0%	100%	0%	100%	0.0
	EHS	TV Production	X	40	40	0	36	4	40	0.1	\$ 14,969.26	100%	90%	10%	0%	100%	3.6
	HHS	Digital Media/MM	X	24	24	0	6	18	24	0.1	\$ 2,494.88	100%	25%	75%	0%	100%	0.6
	MHS	Web Development	X	5	5	0	3	2	5	0.1	\$ 1,247.44	100%	60%	40%	0%	100%	0.3
	MIHS	Digital Design	X	9	9	0	8	1	9	0.1	\$ 3,326.50	100%	89%	11%	0%	100%	0.8
	PBMS	Digital Media/MM	X	10	10	2	1	7	8	0.1	\$ 415.81	100%	13%	88%	20%	80%	0.1
	RHS	Digital Design	X	7	7	0	3	4	7	0.1	\$ 1,247.44	100%	43%	57%	0%	100%	0.3
	SCHS	TV Production	X	58	58	0	11	47	58	0.1	\$ 4,573.94	100%	19%	81%	0%	100%	1.1
	SHS	Digital Media/MM	X	10	10	0	1	9	10	0.1	\$ 415.81	100%	10%	90%	0%	100%	0.1
	SHS	Digital Media/MM	X	15	15	9	2	4	6	0.1	\$ 831.63	100%	33%	67%	60%	40%	0.2
THS	TV Production	X	39	39	0	5	34	39	0.1	\$ 2,079.06	100%	13%	87%	0%	100%	0.5	
VHS	Adv Tech Appl	X	40	40	0	27	13	40	0.1	\$ 11,226.94	100%	68%	33%	0%	100%	2.7	
VHS	TV Production	X	56	56	0	38	18	56	0.1	\$ 15,800.88	100%	68%	32%	0%	100%	3.8	
Autodesk - Certified User AutoCAD	BHS	Drafting	X	3	3	0	1	2	3	0.2	\$ 831.63	100%	33%	67%	0%	100%	0.2
	CHS	Drafting	X	27	27	0	23	4	27	0.2	\$ 19,127.38	100%	85%	15%	0%	100%	4.6
	EGHS	Technical Design	X	79	79	0	51	28	79	0.2	\$ 42,412.89	100%	65%	35%	0%	100%	10.2
	HHS	Technical Design	X	21	21	0	11	10	21	0.2	\$ 9,147.88	100%	52%	48%	0%	100%	2.2
	PBMS	Applied Robotics	X	1	1	0	1	0	1	0.2	\$ 831.63	100%	100%	0%	0%	100%	0.2
	PBMS	Technical Design	X	8	8	1	2	5	7	0.2	\$ 1,663.25	100%	29%	71%	13%	88%	0.4
	RHS	Technical Design	X	40	40	0	36	4	40	0.2	\$ 29,938.51	100%	90%	10%	0%	100%	7.2
	SCHS	Drafting	X	22	22	0	22	0	22	0.2	\$ 18,295.76	100%	100%	0%	0%	100%	4.4
SHS	Technical Design	X	36	36	0	33	3	36	0.2	\$ 27,443.64	100%	92%	8%	0%	100%	6.6	
Autodesk - Certified User AutoCAD Prof	SCHS	Drafting	x	8	8	0	5	3	8	0.2	\$ 4,158.13	100%	63%	38%	0%	100%	1.0
Autodesk - Certified User Inventor	BHS	Drafting	X	27	27	0	26	1	27	0.2	\$ 21,622.26	100%	96%	4%	0%	100%	5.2
	HHS	Technical Design	X	12	12	0	6	6	12	0.2	\$ 4,989.75	100%	50%	50%	0%	100%	1.2
	MIHS	PLTW - ENGINEERING	X	41	41	0	14	27	41	0.2	\$ 11,642.76	100%	34%	66%	0%	100%	2.8
	Odyssey	Introd Engr Design	X	19	19	7	5	7	12	0.2	\$ 4,158.13	100%	42%	58%	37%	63%	1.0
	PBMS	Applied Robotics	X	4	4	0	2	2	4	0.2	\$ 1,663.25	100%	50%	50%	0%	100%	0.4
	PBMS	Technical Design	X	6	6	0	4	2	6	0.2	\$ 3,326.50	100%	67%	33%	0%	100%	0.8
	RHS	Technical Design	X	3	3	0	2	1	3	0.2	\$ 1,663.25	100%	67%	33%	0%	100%	0.4
	SCHS	Drafting	X	11	11	0	11	0	11	0.2	\$ 9,147.88	100%	100%	0%	0%	100%	2.2
SHS	Technical Design	X	4	4	0	1	3	4	0.2	\$ 831.63	100%	25%	75%	0%	100%	0.2	

2017-18 Industry Certification HS Results by Assessment

Assessment	School	Program	School Grade	# Students Identified	# Participants	# In Progress	# Passing	# Failing	# Completing Participants	Funding Weights	Potential CAPE Funding \$	% Participants	% Passing	% Failing	% In Progress	% Completing Participants	Potential Bonus FTE Calculation
Autodesk - Certified User Revit	BHS	Drafting	X	49	49	8	6	35	41	0.2	\$ 4,989.75	100%	15%	85%	16%	84%	1.2
	EGHS	Technical Design	X	3	3	0	0	3	3	0.2	\$ -	100%	0%	100%	0%	100%	0.0
	RHS	Technical Design	X	32	32	0	5	27	32	0.2	\$ 4,158.13	100%	16%	84%	0%	100%	1.0
	SCHS	Drafting	X	9	9	0	6	3	9	0.2	\$ 4,989.75	100%	67%	33%	0%	100%	1.2
	SHS	Technical Design	X	4	4	0	0	4	4	0.2	\$ -	100%	0%	100%	0%	100%	0.0
C N A	PBMS	Patient Care Assisting	X	15	15	0	15	0	15	0.1	\$ 6,237.19	100%	100%	0%	0%	100%	1.5
	THS	Patient Care Assisting	X	27	27	0	27	0	27	0.1	\$ 11,226.94	100%	100%	0%	0%	100%	2.7
	AHS	Patient Care Assisting	X	20	20	0	17	3	20	0.1	\$ 7,068.82	100%	85%	15%	0%	100%	1.7
	BHS	Patient Care Assisting	X	11	11	0	11	0	11	0.1	\$ 4,573.94	100%	100%	0%	0%	100%	1.1
	MHS	Patient Care Assisting	X	14	14	0	14	0	14	0.1	\$ 5,821.38	100%	100%	0%	0%	100%	1.4
RHS	Patient Care Assisting	X	15	15	0	15	0	15	0.1	\$ 6,237.19	100%	100%	0%	0%	100%	1.5	
Certified EKG Tech (CET)	AMI Kids	Culinary Arts	X	2	2	0	2	0	2	0.1	\$ 831.63	100%	100%	0%	100%	100%	0.2
Chief Architect	VHS	Fashion/Interior Design	X	22	22	0	16	6	22	0.2	\$ 13,306.01	100%	73%	27%	0%	100%	3.2
CIW - Advanced HTML5 & CSS3 Spec	PBMS	Web App Dev & Prog	X	6	6	0	0	6	6	0.2	\$ -	100%	0%	100%	0%	100%	0.0
CIW - JavaScript Specialist	PBMS	Web App Dev & Prog	X	7	7	0	3	4	7	0.2	\$ 2,494.88	100%	43%	57%	0%	100%	0.6
CMAA	BHS	Health Science	X	30	30	0	30	0	30	0.1	\$ 12,474.38	100%	100%	0%	0%	100%	3.0
	CHS	Health Science	X	15	15	0	11	4	15	0.1	\$ 4,573.94	100%	73%	27%	0%	100%	1.1
	EGHS	Health Science	X	16	16	0	16	0	16	0.1	\$ 6,653.00	100%	100%	0%	0%	100%	1.6
	HHS	Health Science	X	98	98	0	79	19	98	0.1	\$ 32,849.20	100%	81%	19%	0%	100%	7.9
	HHS	Medical Admin Specialist	X	43	43	2	11	30	41	0.1	\$ 4,573.94	100%	27%	73%	5%	95%	1.1
VHS	Health Science - Dental	X	27	27	0	24	3	27	0.1	\$ 9,979.50	100%	89%	11%	0%	100%	2.4	
CPR/First Aid	AHS	Emergency Medical Responder		18	18	0	18	0	18	0	\$ -	100%	100%	0%	0%	100%	0.0
	AHS	Health Science		66	66	0	66	0	66	0	\$ -	100%	100%	0%	0%	100%	0.0
	AHS	Health Science		86	86	0	86	0	86	0	\$ -	100%	100%	0%	0%	100%	0.0
	AHS	Patient Care Assisting		40	40	0	40	0	40	0	\$ -	100%	100%	0%	0%	100%	0.0
	BHS	Health Science		14	14	0	14	0	14	0	\$ -	100%	100%	0%	0%	100%	0.0
	BHS	Health Science		58	58	0	58	0	58	0	\$ -	100%	100%	0%	0%	100%	0.0
	BHS	Patient Care Assisting		9	9	0	9	0	9	0	\$ -	100%	100%	0%	0%	100%	0.0
	CHS	Health Science		25	25	0	25	0	25	0	\$ -	100%	100%	0%	0%	100%	0.0
	EGHS	Health Science		30	30	0	30	0	30	0	\$ -	100%	100%	0%	0%	100%	0.0
	HHS	Health Science		98	98	0	98	0	98	0	\$ -	100%	100%	0%	0%	100%	0.0
	HHS	Medical Admin Specialist		41	41	0	41	0	41	0	\$ -	100%	100%	0%	0%	100%	0.0
	MHS	Emergency Med Responder		20	20	0	20	0	20	0	\$ -	100%	100%	0%	0%	100%	0.0
	MHS	Health Science		34	34	0	34	0	34	0	\$ -	100%	100%	0%	0%	100%	0.0
	MHS	Patient Care Assisting		14	14	0	14	0	14	0	\$ -	100%	100%	0%	0%	100%	0.0
	PBMS	Health Science		39	39	0	39	0	39	0	\$ -	100%	100%	0%	0%	100%	0.0
RHS	Health Science		124	124	0	124	0	124	0	\$ -	100%	100%	0%	0%	100%	0.0	

2017-18 Industry Certification HS Results by Assessment

Assessment	School	Program	School Grade	# Students Identified	# Participants	# In Progress	# Passing	# Failing	# Completing Participants	Funding Weights	Potential CAPE Funding \$	% Participants	% Passing	% Failing	% In Progress	% Completing Participants	Potential Bonus FTE Calculation
CPR/First Aid	RHS	Patient Care Assisting		30	30	0	30	0	30	0	\$ -	100%	100%	0%	0%	100%	0.0
	THS	Patient Care Assisting		27	27	0	27	0	27	0	\$ -	100%	100%	0%	0%	100%	0.0
	THS	Patient Care Assisting		60	60	0	60	0	60	0	\$ -	100%	100%	0%	0%	100%	0.0
	VHS	Health Science - Dental		29	29	0	29	0	29	0	\$ -	100%	100%	0%	0%	100%	0.0
	EGHS	Early Childhood Ed		9	9	0	9	0	9	0	\$ -	100%	100%	0%	0%	100%	0.0
	MIHS	Early Childhood Ed		12	12	0	12	0	12	0	\$ -	100%	100%	0%	0%	100%	0.0
	PBMS	Early Childhood Ed		15	15	0	15	0	15	0	\$ -	100%	100%	0%	0%	100%	0.0
	SHS	Early Childhood Ed		10	10	0	10	0	10	0	\$ -	100%	100%	0%	0%	100%	0.0
EMR	VHS	Early Childhood Ed		11	11	0	11	0	11	0	\$ -	100%	100%	0%	0%	100%	0.0
	AHS	Emergency Med Responder	X	18	18	0	13	5	18	0.1	\$ 5,405.56	100%	72%	28%	0%	100%	1.3
FAA Ground School	MHS	Emergency Med Responder	X	18	18	0	4	14	18	0.1	\$ 1,663.25	100%	22%	78%	0%	100%	0.4
	EGHS	Aviation	X	24	24	1	19	4	23	0.2	\$ 15,800.88	100%	83%	17%	4%	96%	3.8
FLADA	CHS	Automotive Collision	X	38	38	0	21	17	38	0.1	\$ 8,732.07	100%	55%	45%	0%	100%	2.1
	EGHS	Automotive Service Tech	X	30	30	0	17	13	30	0.1	\$ 7,068.82	100%	57%	43%	0%	100%	1.7
	EGHS	Marine Tech	X	16	16	0	8	8	16	0.1	\$ 3,326.50	100%	50%	50%	0%	100%	0.8
	HHS	Automotive Service Tech	X	21	21	0	14	7	21	0.1	\$ 5,821.38	100%	67%	33%	0%	100%	1.4
	MIHS	Automotive Service Tech	X	17	17	0	8	9	17	0.1	\$ 3,326.50	100%	47%	53%	0%	100%	0.8
	RHS	Automotive Service Tech	X	29	29	0	18	11	29	0.1	\$ 7,484.63	100%	62%	38%	0%	100%	1.8
	SHS	Automotive Service Tech	X	26	26	0	14	12	26	0.1	\$ 5,821.38	100%	54%	46%	0%	100%	1.4
Homebuilder's PAC	THS	Automotive Service Tech	X	21	21	0	21	0	21	0.1	\$ 8,732.07	100%	100%	0%	0%	100%	2.1
	AHS	Building Cons Tech	X	80	80	80	0	0	0	0.1	\$ -	100%	0%	0%	100%	0%	0.0
	MHS	Building Cons Tech	X	8	8	0	0	8	8	0.1	\$ -	100%	0%	100%	0%	100%	0.0
	PBMS	Building Cons Tech	X	9	9	9	0	0	0	0.1	\$ -	100%	0%	0%	100%	0%	0.0
HVAC Excellence - A/C	SCHS	A/C Refrig & Heat	X	19	19	0	0	19	19	0.1	\$ -	100%	0%	100%	0%	100%	0.0
	SCHS	A/C Refrig & Heat	X	8	8	0	8	0	8	0.2	\$ 6,653.00	100%	100%	0%	0%	100%	1.6
HVAC Excellence - Electrical	SCHS	A/C Refrig & Heat	X	5	5	0	5	0	5	0.2	\$ 4,158.13	100%	100%	0%	0%	100%	1.0
	EGHS	Early Childhood Ed		9	9	0	9	0	9	0	\$ -	100%	100%	0%	0%	100%	0.0
Intro to Childcare Training Certificate	MIHS	Early Childhood Ed		12	12	0	12	0	12	0	\$ -	100%	100%	0%	0%	100%	0.0
	PBMS	Early Childhood Ed		13	13	0	12	1	13	0	\$ -	100%	92%	8%	0%	100%	0.0
	SHS	Early Childhood Ed		10	10	0	10	0	10	0	\$ -	100%	100%	0%	0%	100%	0.0
	VHS	Early Childhood Ed		14	14	0	8	6	14	0	\$ -	100%	57%	43%	0%	100%	0.0
Intuit: Quick Books	CHS	Accounting Appl	X	7	7	0	0	7	7	0.2	\$ -	100%	0%	100%	0%	100%	0.0
	VHS	Accounting Appl	X	42	42	2	1	39	40	0.2	\$ 831.63	100%	3%	98%	5%	95%	0.2
Microsoft Office Master	CBHS	Digital Info Tech	X	2	2	0	2	0	2	0.2	\$ 1,663.25	100%	100%	0%	0%	100%	0.4
	CBHS	Int'l Business	X	1	1	0	1	0	1	0.2	\$ 831.63	100%	100%	0%	0%	100%	0.2
	MIHS	Bus Software App	X	1	1	0	1	0	1	0.2	\$ 831.63	100%	100%	0%	0%	100%	0.2

2017-18 Industry Certification HS Results by Assessment

Assessment	School	Program	School Grade	# Students Identified	# Participants	# In Progress	# Passing	# Failing	# Completing Participants	Funding Weights	Potential CAPE Funding \$	% Participants	% Passing	% Failing	% In Progress	% Completing Participants	Potential Bonus FTE Calculation
MOS Bundle	AHS	Bus Software App	X	12	12	7	5	0	5	0.2	\$ 4,158.13	100%	100%	0%	58%	42%	1.0
	AHS	Digital Info Tech	X	44	44	37	4	3	7	0.2	\$ 3,326.50	100%	57%	43%	84%	16%	0.8
	Brevard Vrtl	Digital Info Tech	X	2	2	0	2	0	2	0.2	\$ 1,663.25	100%	100%	0%	100%	100%	0.4
	CBHS	Digital Info Tech	X	49	49	4	26	19	45	0.2	\$ 21,622.26	100%	58%	42%	8%	92%	5.2
	CBHS	Int'l Business	X	35	35	3	17	15	32	0.2	\$ 14,137.63	100%	53%	47%	9%	91%	3.4
	CHS	Digital Info Tech	X	55	55	31	20	4	24	0.2	\$ 16,632.51	100%	83%	17%	56%	44%	4.0
	CHS	Digital Info Tech	X	53	53	45	7	1	8	0.2	\$ 5,821.38	100%	88%	13%	85%	15%	1.4
	EGHS	Bus Software App	X	85	85	79	4	2	6	0.2	\$ 3,326.50	100%	67%	33%	93%	7%	0.8
	EGHS	Digital Info Tech	X	66	66	62	1	3	4	0.2	\$ 831.63	100%	25%	75%	94%	6%	0.2
	HHS	Bus Software App	X	25	25	0	16	9	25	0.2	\$ 13,306.01	100%	64%	36%	0%	100%	3.2
	HHS	Digital Info Tech	X	134	134	111	15	8	23	0.2	\$ 12,474.38	100%	65%	35%	83%	17%	3.0
	HHS	Digital Info Tech	X	42	42	0	18	24	42	0.2	\$ 14,969.26	100%	43%	57%	0%	100%	3.6
	HHS	Digital Info Tech	X	45	45	0	22	23	45	0.2	\$ 18,295.76	100%	49%	51%	0%	100%	4.4
	HHS	Digital Info Tech	X	18	18	0	15	3	18	0.2	\$ 12,474.38	100%	83%	17%	0%	100%	3.0
	MHS	Accounting Appl	X	3	3	0	3	0	3	0.2	\$ 2,494.88	100%	100%	0%	0%	100%	0.6
	MHS	Digital Info Tech	X	160	160	59	101	0	101	0.2	\$ 83,994.16	100%	100%	0%	37%	63%	20.2
	MIHS	Bus Software App	X	28	28	21	5	2	7	0.2	\$ 4,158.13	100%	71%	29%	75%	25%	1.0
	MIHS	Digital Info Tech	X	80	80	67	11	2	13	0.2	\$ 9,147.88	100%	85%	15%	84%	16%	2.2
	MIHS	Hosp & Tourism	X	11	11	5	5	1	6	0.2	\$ 4,158.13	100%	83%	17%	45%	55%	1.0
	RHS	Hosp & Tourism	X	31	31	1	11	19	30	0.2	\$ 9,147.88	100%	37%	63%	3%	97%	2.2
	SCHS	Bus Software App	X	33	33	26	7	0	7	0.2	\$ 5,821.38	100%	100%	0%	79%	21%	1.4
	SCHS	Digital Info Tech	X	35	35	27	7	1	8	0.2	\$ 5,821.38	100%	88%	13%	77%	23%	1.4
	SHS	Bus Software App	X	25	25	13	11	1	12	0.2	\$ 9,147.88	100%	92%	8%	52%	48%	2.2
	SHS	Digital Info Tech	X	36	36	25	11	0	11	0.2	\$ 9,147.88	100%	100%	0%	69%	31%	2.2
	THS	Digital Info Tech	X	52	52	29	18	5	23	0.2	\$ 14,969.26	100%	78%	22%	56%	44%	3.6
	THS	Digital Info Tech	X	61	61	20	34	7	41	0.2	\$ 28,275.26	100%	83%	17%	33%	67%	6.8
	VHS	Accounting Appl	X	2	2	0	1	1	2	0.2	\$ 831.63	100%	50%	50%	0%	100%	0.2
	VHS	Digital Info Tech	X	9	9	4	4	1	5	0.2	\$ 3,326.50	100%	80%	20%	44%	56%	0.8
	VHS	Digital Info Tech	X	29	29	12	16	1	17	0.2	\$ 13,306.01	100%	94%	6%	41%	59%	3.2
	VHS	Finance Academy	X	1	1	0	1	0	1	0.2	\$ 831.63	100%	100%	0%	0%	100%	0.2
	VHS	Finance Academy	X	63	63	10	42	11	53	0.2	\$ 34,928.27	100%	79%	21%	16%	84%	8.4
	VHS	Finance Academy	X	2	2	0	2	0	2	0.2	\$ 1,663.25	100%	100%	0%	0%	100%	0.4
MS Office Specialist: Word	Brevard Vrtl	Digital Info Tech	X	1	1	0	1	0	1	0.025	\$ 103.95	100%	100%	0%	100%	100%	0.0
MSSC Certified Production Technician	BHS	Machining Tech	X	63	63	61	2	0	2	0.5	\$ 4,158.13	100%	100%	0%	97%	3%	1.0
NATE	SCHS	A/C Refrig & Heat	X	1	1	0	1	0	1	0.2	\$ 831.63	100%	100%	0%	0%	100%	0.2
National CDA	EGHS	Early Childhood Ed	X	1	1	0	1	0	1	0.2	\$ 831.63	100%	100%	0%	0%	100%	0.2
	PBMS	Early Childhood Ed	X	3	3	0	3	0	3	0.2	\$ 2,494.88	100%	100%	0%	0%	100%	0.6

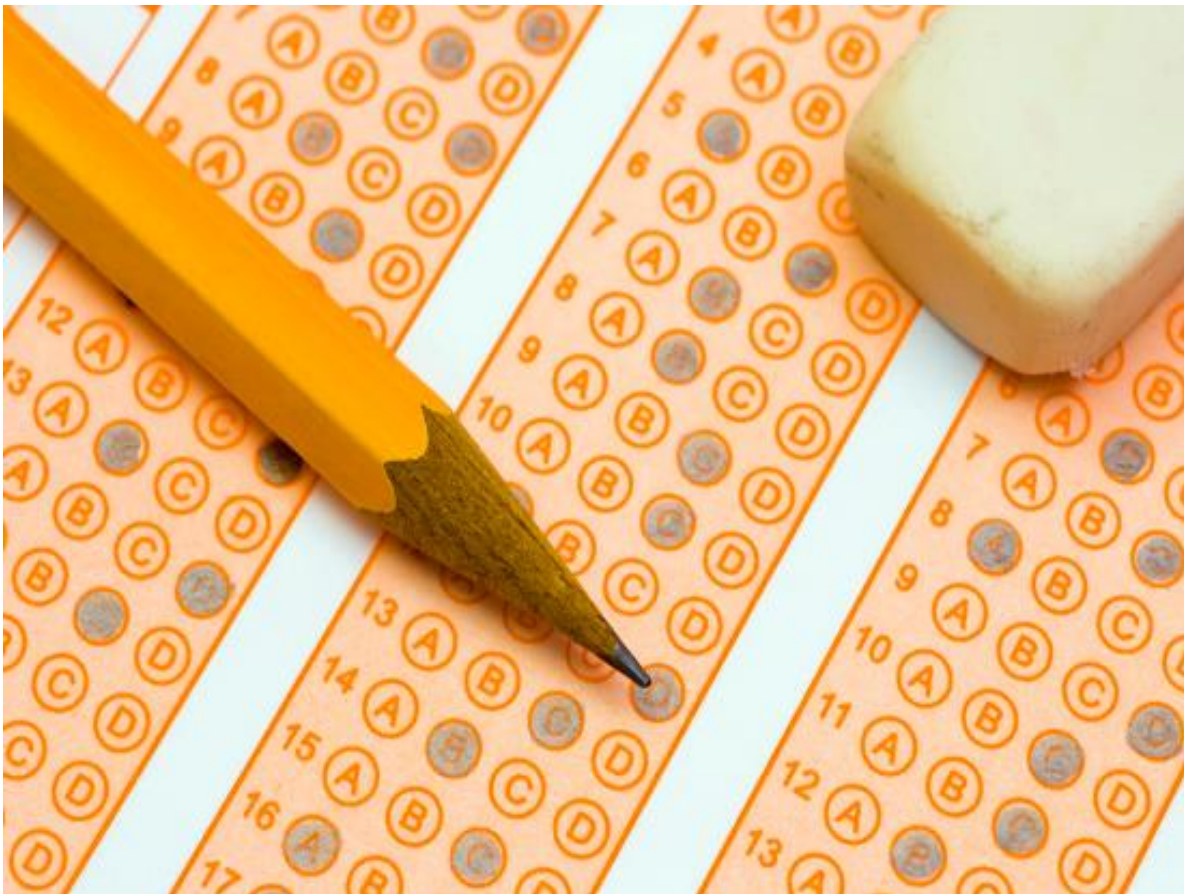
2017-18 Industry Certification HS Results by Assessment

Assessment	School	Program	School Grade	# Students Identified	# Participants	# In Progress	# Passing	# Failing	# Completing Participants	Funding Weights	Potential CAPE Funding \$	% Participants	% Passing	% Failing	% In Progress	% Completing Participants	Potential Bonus FTE Calculation
NCCER	SCHS	A/C Refrig & Heat	X	96	96	87	9	0	9	0.2	\$ 7,484.63	100%	100%	0%	91%	9%	1.8
NOCTI - Apparel & Text Prod & Mer	CBHS	Fashion Design Services		3	3	0	2	1	3	0	\$ -	100%	67%	33%	0%	100%	0.0
	RHS	Fashion Design Services		7	7	0	5	2	7	0	\$ -	100%	71%	29%	0%	100%	0.0
	SHS	Fashion Design Services		13	13	0	13	0	13	0	\$ -	100%	100%	0%	0%	100%	0.0
	THS	Fashion Design Services		1	1	0	1	0	1	0	\$ -	100%	100%	0%	0%	100%	0.0
NOCTI - Criminal Justice	PBMS	Criminal Justice		14	14	0	14	0	14	0	\$ -	100%	100%	0%	0%	100%	0.0
	RHS	Criminal Justice		21	21	2	16	3	19	0	\$ -	100%	84%	16%	10%	90%	0.0
ParaPro	SCHS	Teacher Assisting		4	4	0	2	2	4	0	\$ -	100%	50%	50%	0%	100%	0.0
ProStart Certificate of Achievement	BHS	Culinary Arts	X	4	4	0	4	0	4	0.2	\$ 3,326.50	100%	100%	0%	0%	100%	0.8
	BHS	Culinary Arts	X	15	15	0	15	0	15	0.2	\$ 12,474.38	100%	100%	0%	0%	100%	3.0
	PBMS	Culinary Arts	X	2	2	0	2	0	2	0.2	\$ 1,663.25	100%	100%	0%	0%	100%	0.4
Quickbooks	AHS	Accounting Appl	X	20	20	0	8	12	20	0.2	\$ 6,653.00	100%	40%	60%	0%	100%	1.6
	MHS	Accounting Appl	X	19	19	0	0	19	19	0.2	\$ -	100%	0%	100%	0%	100%	0.0
SafeStaff Food Handler Certification	BHS	Culinary Arts		55	55	0	54	1	55	0	\$ -	100%	98%	2%	0%	100%	0.0
	BHS	Culinary Arts		59	59	0	59	0	59	0	\$ -	100%	100%	0%	0%	100%	0.0
	CHS	Culinary Arts		58	58	0	58	0	58	0	\$ -	100%	100%	0%	0%	100%	0.0
	MHS	Culinary Arts		52	52	0	52	0	52	0	\$ -	100%	100%	0%	0%	100%	0.0
	MHS	Culinary Arts		81	81	0	81	0	81	0	\$ -	100%	100%	0%	0%	100%	0.0
	PBMS	Culinary Arts		50	50	0	50	0	50	0	\$ -	100%	100%	0%	0%	100%	0.0
	THS	Culinary Arts		63	63	0	63	0	63	0	\$ -	100%	100%	0%	0%	100%	0.0
ServSafe Manager	AHS	Food Science	X	27	27	0	16	11	27	0.2	\$ 13,306.01	100%	59%	41%	0%	100%	3.2
	AMI Kids	Culinary Arts	X	4	4	0	4	0	4	0.2	\$ 3,326.50	100%	100%	0%	100%	100%	0.8
	BHS	Culinary Arts	X	44	44	0	32	12	44	0.2	\$ 26,612.01	100%	73%	27%	0%	100%	6.4
	BHS	Culinary Arts	X	51	51	0	44	7	51	0.2	\$ 36,591.52	100%	86%	14%	0%	100%	8.8
	CHS	Culinary Arts	X	31	31	0	14	17	31	0.2	\$ 11,642.76	100%	45%	55%	0%	100%	2.8
	HHS	Food Science	X	60	60	0	36	24	60	0.2	\$ 29,938.51	100%	60%	40%	0%	100%	7.2
	MHS	Culinary Arts	X	43	43	0	29	14	43	0.2	\$ 24,117.14	100%	67%	33%	0%	100%	5.8
	MHS	Food Science	X	2	2	0	0	2	2	0.2	\$ -	100%	0%	100%	0%	100%	0.0
	MIHS	Food Science	X	17	17	0	15	2	17	0.2	\$ 12,474.38	100%	88%	12%	0%	100%	3.0
	PBMS	Culinary Arts	X	37	37	0	30	7	37	0.2	\$ 24,948.76	100%	81%	19%	0%	100%	6.0
	SCHS	Food Science	X	10	10	0	2	8	10	0.2	\$ 1,663.25	100%	20%	80%	0%	100%	0.4
	SHS	Food Science	X	14	14	0	6	8	14	0.2	\$ 4,989.75	100%	43%	57%	0%	100%	1.2
	THS	Culinary Arts	X	57	57	0	45	12	57	0.2	\$ 37,423.14	100%	79%	21%	0%	100%	9.0
	VHS	Food Science	X	12	12	0	9	3	12	0.2	\$ 7,484.63	100%	75%	25%	0%	100%	1.8
Small UAS Safety Certification	BHS	Embry Riddle Dual Enroll	X	2	2	0	2	0	2	0.2	\$ 1,663.25	100%	100%	0%	0%	100%	0.4
	THS	Embry Riddle Dual Enroll	X	2	2	0	2	0	2	0.2	\$ 1,663.25	100%	100%	0%	0%	100%	0.4

2017-18 Industry Certification HS Results by Assessment

Assessment	School	Program	School Grade	# Students Identified	# Participants	# In Progress	# Passing	# Failing	# Completing Participants	Funding Weights	Potential CAPE Funding \$	% Participants	% Passing	% Failing	% In Progress	% Completing Participants	Potential Bonus FTE Calculation
Solidworks	BHS	Engineering Technology	X	26	26	0	16	10	26	0.2	\$ 13,306.01	100%	62%	38%	0%	100%	3.2
	HHS	Advanced Manufacturing	X	10	10	1	1	8	9	0.2	\$ 831.63	100%	11%	89%	10%	90%	0.2
	MHS	Engineering Technology	X	49	49	0	36	13	49	0.2	\$ 29,938.51	100%	73%	27%	0%	100%	7.2
	PBMS	Engineering Technology	X	13	13	1	6	6	12	0.2	\$ 4,989.75	100%	50%	50%	8%	92%	1.2
	SCHS	Engineering Technology	X	20	20	0	17	3	20	0.2	\$ 14,137.63	100%	85%	15%	0%	100%	3.4
Staff Credential	EGHS	Early Childhood Ed		9	9	0	9	0	9	0	\$ -	100%	100%	0%	0%	100%	0.0
	MIHS	Early Childhood Ed		12	12	0	12	0	12	0	\$ -	100%	100%	0%	0%	100%	0.0
	PBMS	Early Childhood Ed		13	13	0	12	1	13	0	\$ -	100%	92%	8%	0%	100%	0.0
	SHS	Early Childhood Ed		10	10	0	10	0	10	0	\$ -	100%	100%	0%	0%	100%	0.0
	VHS	Early Childhood Ed		14	14	0	8	6	14	0	\$ -	100%	57%	43%	0%	100%	0.0
ToonBoom Harmony Premium	PBMS	Game & Simulation	X	1	1	0	0	1	1	0.1	\$ -	100%	0%	100%	0%	100%	0.0
	VHS	Adv Tech Appl	X	1	1	0	0	1	1	0.1	\$ -	100%	0%	100%	0%	100%	0.0
ToonBoom Storyboard Pro	PBMS	Game & Simulation	X	7	7	0	0	7	7	0.1	\$ -	100%	0%	100%	0%	100%	0.0
Wastewater Treatment Plant Oper C	HHS	Environmental Water	X	18	18	3	2	13	15	0.1	\$ 831.63	100%	13%	87%	17%	83%	0.2
Water Treat Plant Oper Lvl C	HHS	Environmental Water	X	18	18	0	8	10	18	0.1	\$ 3,326.50	100%	44%	56%	0%	100%	0.8

Middle / JR High Industry Certification Results By Assessment



This page intentionally left blank.

2017-18 Industry Certification MS Results by Assessment

Assessment	School	Program	School Grade	# Students Identified	# Participants	Didn't Test	# in Progress	# Passing	# Failing	# Completing Participants	Funding Weights	Potential Funding \$	% Participants	% Passing	% Failing	% In Progress	% Completing Participants	Cost of Assessments & Test Prep Used	Potential Bonus FTE Calculation
IC3 - Computing Fund	SWMS	Cptr Appl Bus		23	23	0	0	2	21	23	0.025	\$ 207.91	100%	9%	91%	0%	100%		0.050
	SCHSMS	Cptr Appl Bus		17	17	0	0	7	10	17	0.025	\$ 727.67	100%	41%	59%	0%	100%		0.175
	MAMS	Cptr Appl Bus		14	14	0	0	2	12	14	0.025	\$ 207.91	100%	14%	86%	0%	100%		0.050
	CMS	Cptr Appl Bus		36	36	0	0	5	31	36	0.025	\$ 519.77	100%	14%	86%	0%	100%		0.125
	CMS	Cptr Appl Bus		6	6	0	0	3	3	6	0.025	\$ 311.86	100%	50%	50%	0%	100%		0.075
	CMS	Digital Info Tech		7	7	0	0	3	4	7	0.025	\$ 311.86	100%	43%	57%	0%	100%		0.075
	CBHSMS	Cptr Appl Bus		13	13	0	0	5	8	13	0.025	\$ 519.77	100%	38%	62%	0%	100%		0.125
	CBHSMS	Cptr Appl Bus		1	1	0	0	0	1	1	0.025	\$ -	100%	0%	100%	0%	100%		0.000
IC3 - Key Applications	SWMS	Cptr Appl Bus		216	176	40	0	115	61	176	0.025	\$ 11,954.61	81%	65%	35%	0%	100%		2.875
	SWMS	Digital Info Tech		10	10	0	0	2	8	10	0.025	\$ 207.91	100%	20%	80%	0%	100%		0.050
	SCHSMS	Cptr Appl Bus		57	57	0	0	40	17	57	0.025	\$ 4,158.13	100%	70%	30%	0%	100%		1.000
	MAMS	Cptr Appl Bus		130	77	53	0	34	43	77	0.025	\$ 3,534.41	59%	44%	56%	0%	100%		0.850
	MAMS	Digital Info Tech		1	1	0	0	0	1	1	0.025	\$ -	100%	0%	100%	0%	100%		0.000
	KMS	Cptr Appl Bus		148	72	76	0	66	6	72	0.025	\$ 6,860.91	49%	92%	8%	0%	100%		1.650
	JOMS	Cptr Appl Bus		150	6	144	0	1	5	6	0.025	\$ 103.95	4%	17%	83%	0%	100%		0.025
	JEMS	Cptr Appl Bus		113	85	28	0	50	35	85	0.025	\$ 5,197.66	75%	59%	41%	0%	100%		1.250
	JEMS	Digital Info Tech		1	1	0	0	0	1	1	0.025	\$ -	100%	0%	100%	0%	100%		0.000
	JAMS	Cptr Appl Bus		146	135	11	0	101	34	135	0.025	\$ 10,499.27	92%	75%	25%	0%	100%		2.525
	JAMS	Digital Info Tech		1	1	0	0	1	0	1	0.025	\$ 103.95	100%	100%	0%	0%	100%		0.025
	HMS	Cptr Appl Bus		121	73	48	0	32	41	73	0.025	\$ 3,326.50	60%	44%	56%	0%	100%		0.800
	HMS	Digital Info Tech		3	3	0	0	0	3	3	0.025	\$ -	100%	0%	100%	0%	100%		0.000
	DMS	Cptr Appl Bus		305	199	106	0	106	93	199	0.025	\$ 11,019.04	65%	53%	47%	0%	100%		2.650
	CMS	Cptr Appl Bus		170	98	72	0	56	42	98	0.025	\$ 5,821.38	58%	57%	43%	0%	100%		1.400
	CMS	Cptr Appl Bus		165	92	73	0	64	28	92	0.025	\$ 6,653.00	56%	70%	30%	0%	100%		1.600
	CMS	Digital Info Tech		8	8	0	0	8	0	8	0.025	\$ 831.63	100%	100%	0%	0%	100%		0.200
	CHSMS	Cptr Appl Bus		124	51	73	0	49	2	51	0.025	\$ 5,093.71	41%	96%	4%	0%	100%		1.225
	CBHSMS	Cptr Appl Bus		69	68	1	0	37	31	68	0.025	\$ 3,846.27	99%	54%	46%	0%	100%		0.925
	CBHSMS	Cptr Appl Bus		43	38	5	0	19	19	38	0.025	\$ 1,975.11	88%	50%	50%	0%	100%		0.475
IC3 - Living Online	SWMS	Cptr Appl Bus		74	74	0	0	31	43	74	0.025	\$ 3,222.55	100%	42%	58%	0%	100%		0.775
	SCHSMS	Cptr Appl Bus		4	4	0	0	4	0	4	0.025	\$ 415.81	100%	100%	0%	0%	100%		0.100
	MAMS	Cptr Appl Bus		2	2	0	0	1	1	2	0.025	\$ 103.95	100%	50%	50%	0%	100%		0.025
	JEMS	Cptr Appl Bus		1	1	0	0	0	1	1	0.025	\$ -	100%	0%	100%	0%	100%		0.000
	CMS	Cptr Appl Bus		48	48	0	0	23	25	48	0.025	\$ 2,390.92	100%	48%	52%	0%	100%		0.575
	CMS	Cptr Appl Bus		13	13	0	0	10	3	13	0.025	\$ 1,039.53	100%	77%	23%	0%	100%		0.250
	CMS	Digital Info Tech		12	12	0	0	9	3	12	0.025	\$ 935.58	100%	75%	25%	0%	100%		0.225
	CBHSMS	Cptr Appl Bus		28	28	0	0	18	10	28	0.025	\$ 1,871.16	100%	64%	36%	0%	100%		0.450
CBHSMS	Cptr Appl Bus		21	21	0	0	10	11	21	0.025	\$ 1,039.53	100%	48%	52%	0%	100%		0.250	

2017-18 Industry Certification MS Results by Assessment

Assessment	School	Program	School Grade	# Students Identified	# Participants	Didn't Test	# in Progress	# Passing	# Failing	# Completing Participants	Funding Weights	Potential Funding \$	% Participants	% Passing	% Failing	% In Progress	% Completing Participants	Cost of Assessments & Test Prep Used	Potential Bonus FTE Calculation
IC3 - Spark	JAMS	Cptr Appl Bus		1	1	0	0	1	0	1	0.025	\$ 103.95	100%	100%	0%	0%	100%		0.025
	CMS	Digital Info Tech		1	1	0	0	1	0	1	0.025	\$ 103.95	100%	100%	0%	0%	100%		0.025
IC3 -Computer Fundamentals	JEMS	Cptr Appl Bus		2	2	0	0	0	2	2	0.025	-	100%	0%	100%	0%	100%		0.000
MOS Bundle	SWMS	Digital Info Tech	X	38	31	7	10	20	1	21	0.100	\$ 8,316.25	82%	95%	5%	32%	68%		2.000
	SCHSMS	Digital Info Tech	X	20	9	11	6	3	0	3	0.100	\$ 1,247.44	45%	100%	0%	67%	33%		0.300
	MAMS	Digital Info Tech	X	44	22	22	16	6	0	6	0.100	\$ 2,494.88	50%	100%	0%	73%	27%		0.600
	KMS	Digital Info Tech	X	52	52	0	3	49	0	49	0.100	\$ 20,374.82	100%	100%	0%	6%	94%		4.900
	JOMS	Digital Info Tech	X	41	16	25	10	6	0	6	0.100	\$ 2,494.88	39%	100%	0%	63%	38%		0.600
	JEMS	Digital Info Tech	X	58	35	23	22	13	0	13	0.100	\$ 5,405.56	60%	100%	0%	63%	37%		1.300
	JAMS	Digital Info Tech	X	33	31	2	22	9	0	9	0.100	\$ 3,742.31	94%	100%	0%	71%	29%		0.900
	HMS	Digital Info Tech	X	71	63	8	8	55	0	55	0.100	\$ 22,869.70	89%	100%	0%	13%	87%		5.500
	CMS	Digital Info Tech	X	83	52	31	20	32	0	32	0.100	\$ 13,306.01	63%	100%	0%	38%	62%		3.200
CHSMS	Digital Info Tech	X	21	19	2	8	11	0	11	0.100	\$ 4,573.94	90%	100%	0%	42%	58%		1.100	
MS Office Master	CMS	Digital Info Tech	X	3	3	0	0	3	0	3	0.100	\$ 1,247.44	100%	100%	0%	0%	100%		0.300
MS Office Specialist: Excel	SWMS	Digital Info Tech		4	4	0	0	4	0	4	0.025	\$ 415.81	100%	100%	0%	0%	100%		0.100
	STMS	Digital Info Tech		40	40	0	39	1	0	1	0.025	\$ 103.95	100%	100%	0%	98%	3%		0.025
	SCHSMS	Digital Info Tech		6	6	0	0	6	0	6	0.025	\$ 623.72	100%	100%	0%	0%	100%		0.150
	KMS	Digital Info Tech		2	2	0	0	2	0	2	0.025	\$ 207.91	100%	100%	0%	0%	100%		0.050
	JOMS	Digital Info Tech		7	7	0	0	7	0	7	0.025	\$ 727.67	100%	100%	0%	0%	100%		0.175
	JEMS	Digital Info Tech		4	4	0	0	4	0	4	0.025	\$ 415.81	100%	100%	0%	0%	100%		0.100
	JAMS	Digital Info Tech		1	1	0	0	1	0	1	0.025	\$ 103.95	100%	100%	0%	0%	100%		0.025
	CHSMS	Digital Info Tech		2	2	0	0	2	0	2	0.025	\$ 207.91	100%	100%	0%	0%	100%		0.050
MS Office Specialist: Word	SWMS	Digital Info Tech		9	9	0	0	9	0	9	0.025	\$ 935.58	100%	100%	0%	0%	100%		0.225
	STMS	Digital Info Tech		11	11	0	0	11	0	11	0.025	\$ 1,143.48	100%	100%	0%	0%	100%		0.275
	MAMS	Digital Info Tech		16	16	0	0	16	0	16	0.025	\$ 1,663.25	100%	100%	0%	0%	100%		0.400
	KMS	Digital Info Tech		2	2	0	0	2	0	2	0.025	\$ 207.91	100%	100%	0%	0%	100%		0.050
	JOMS	Cptr Appl Bus		1	1	0	0	1	0	1	0.025	\$ 103.95	100%	100%	0%	0%	100%		0.025
	JOMS	Digital Info Tech		9	9	0	0	9	0	9	0.025	\$ 935.58	100%	100%	0%	0%	100%		0.225
	JEMS	Digital Info Tech		22	22	0	0	22	0	22	0.025	\$ 2,286.97	100%	100%	0%	0%	100%		0.550
	JAMS	Digital Info Tech		22	22	0	0	22	0	22	0.025	\$ 2,286.97	100%	100%	0%	0%	100%		0.550
	HMS	Digital Info Tech		8	8	0	0	8	0	8	0.025	\$ 831.63	100%	100%	0%	0%	100%		0.200
	CMS	Cptr Appl Bus		1	1	0	0	1	0	1	0.025	\$ 103.95	100%	100%	0%	0%	100%		0.025
	CMS	Digital Info Tech		20	20	0	0	20	0	20	0.025	\$ 2,079.06	100%	100%	0%	0%	100%		0.500
	CHSMS	Digital Info Tech		8	8	0	0	8	0	8	0.025	\$ 831.63	100%	100%	0%	0%	100%		0.200

High School Industry Certification By Program



This page intentionally left blank.

2017-18 Industry Certification HS Results by Program

Program	School	Assessment	School Grade	# Students Identified	# Participants	# In Progress	# Passing	# Failing	# Completing Participants	Funding Weights	Potential CAPE Funding \$	% Participants	% Passing	% Failing	% In Progress	% Completing Participants	Potential Bonus FTE Calculation
A/C Refrig & Heat	SCHS	Homebuilder's PAC	X	19	19	0	0	19	19	0.1	\$ -	100%	0%	100%	0%	100%	0.0
	SCHS	HVAC Excellence - A/C	X	8	8	0	8	0	8	0.2	\$ 6,653.00	100%	100%	0%	0%	100%	1.6
	SCHS	HVAC Excellence - Electrical	X	5	5	0	5	0	5	0.2	\$ 4,158.13	100%	100%	0%	0%	100%	1.0
	SCHS	NATE	X	1	1	0	1	0	1	0.2	\$ 831.63	100%	100%	0%	0%	100%	0.2
	SCHS	NCCER	X	96	96	87	9	0	9	0.2	\$ 7,484.63	100%	100%	0%	91%	9%	1.8
Accounting Appl	AHS	Quickbooks	X	20	20	0	8	12	20	0.2	\$ 6,653.00	100%	40%	60%	0%	100%	1.6
	CHS	Intuit: Quick Books	X	7	7	0	0	7	7	0.2	\$ -	100%	0%	100%	0%	100%	0.0
	MHS	MOS Bundle	X	3	3	0	3	0	3	0.2	\$ 2,494.88	100%	100%	0%	0%	100%	0.6
	MHS	Quickbooks	X	19	19	0	0	19	19	0.2	\$ -	100%	0%	100%	0%	100%	0.0
	VHS	Intuit: Quick Books	X	42	42	2	1	39	40	0.2	\$ 831.63	100%	3%	98%	5%	95%	0.2
	VHS	MOS Bundle	X	2	2	0	1	1	2	0.2	\$ 831.63	100%	50%	50%	0%	100%	0.2
Adv Tech Appl	VHS	Adobe: Photoshop	X	4	4	0	4	0	4	0.1	\$ 1,663.25	100%	100%	0%	0%	100%	0.4
	VHS	Adobe: Premiere Pro	X	40	40	0	27	13	40	0.1	\$ 11,226.94	100%	68%	33%	0%	100%	2.7
	VHS	ToonBoom Harmony Premium	X	1	1	0	0	1	1	0.1	\$ -	100%	0%	100%	0%	100%	0.0
Advanced Manufacturing	HHS	Solidworks	X	10	10	1	1	8	9	0.2	\$ 831.63	100%	11%	89%	10%	90%	0.2
AP STUD ART 2-D	WSHS	Adobe: Photoshop	X	22	22	0	17	5	22	0.1	\$ 7,068.82	100%	77%	23%	0%	100%	1.7
Applied Robotics	PBMS	Autodesk - Certified User AutoCAD	X	1	1	0	1	0	1	0.2	\$ 831.63	100%	100%	0%	0%	100%	0.2
	PBMS	Autodesk - Certified User Inventor	X	4	4	0	2	2	4	0.2	\$ 1,663.25	100%	50%	50%	0%	100%	0.4
Automotive Collision	CHS	FLADA	X	38	38	0	21	17	38	0.1	\$ 8,732.07	100%	55%	45%	0%	100%	2.1
Automotive Service Tech	EGHS	FLADA	X	30	30	0	17	13	30	0.1	\$ 7,068.82	100%	57%	43%	0%	100%	1.7
	HHS	FLADA	X	21	21	0	14	7	21	0.1	\$ 5,821.38	100%	67%	33%	0%	100%	1.4
	MIHS	FLADA	X	17	17	0	8	9	17	0.1	\$ 3,326.50	100%	47%	53%	0%	100%	0.8
	RHS	FLADA	X	29	29	0	18	11	29	0.1	\$ 7,484.63	100%	62%	38%	0%	100%	1.8
	SHS	FLADA	X	26	26	0	14	12	26	0.1	\$ 5,821.38	100%	54%	46%	0%	100%	1.4
	THS	FLADA	X	21	21	0	21	0	21	0.1	\$ 8,732.07	100%	100%	0%	0%	100%	2.1
Aviation	EGHS	FAA Ground School	X	24	24	1	19	4	23	0.2	\$ 15,800.88	100%	83%	17%	4%	96%	3.8
Building Cons Tech	AHS	Homebuilder's PAC	X	80	80	80	0	0	0	0.1	\$ -	100%	0%	0%	100%	0%	0.0
	MHS	Homebuilder's PAC	X	8	8	0	0	8	8	0.1	\$ -	100%	0%	100%	0%	100%	0.0
	PBMS	Homebuilder's PAC	X	9	9	9	0	0	0	0.1	\$ -	100%	0%	0%	100%	0%	0.0
Bus Software App	AHS	MOS Bundle	X	12	12	7	5	0	5	0.2	\$ 4,158.13	100%	100%	0%	58%	42%	1.0
	EGHS	MOS Bundle	X	85	85	79	4	2	6	0.2	\$ 3,326.50	100%	67%	33%	93%	7%	0.8
	HHS	MOS Bundle	X	25	25	0	16	9	25	0.2	\$ 13,306.01	100%	64%	36%	0%	100%	3.2
	MIHS	Microsoft Office Master	X	1	1	0	1	0	1	0.2	\$ 831.63	100%	100%	0%	0%	100%	0.2
	MIHS	MOS Bundle	X	28	28	21	5	2	7	0.2	\$ 4,158.13	100%	71%	29%	75%	25%	1.0
	SCHS	MOS Bundle	X	33	33	26	7	0	7	0.2	\$ 5,821.38	100%	100%	0%	79%	21%	1.4
	SHS	MOS Bundle	X	25	25	13	11	1	12	0.2	\$ 9,147.88	100%	92%	8%	52%	48%	2.2
Comm Tech	VHS	Adobe: Illustrator	X	82	82	0	62	20	82	0.1	\$ 25,780.39	100%	76%	24%	0%	100%	6.2
	VHS	Adobe: InDesign	X	14	14	0	8	6	14	0.1	\$ 3,326.50	100%	57%	43%	0%	100%	0.8
	VHS	Adobe: Photoshop	X	52	52	0	36	16	52	0.1	\$ 14,969.26	100%	69%	31%	0%	100%	3.6

2017-18 Industry Certification HS Results by Program

Program	School	Assessment	School Grade	# Students Identified	# Participants	# In Progress	# Passing	# Failing	# Completing Participants	Funding Weights	Potential CAPE Funding \$	% Participants	% Passing	% Failing	% In Progress	% Completing Participants	Potential Bonus FTE Calculation
Criminal Justice	PBMS	NOCTI - Criminal Justice		14	14	0	14	0	14	0 \$	-	100%	100%	0%	0%	100%	0.0
	RHS	NOCTI - Criminal Justice		21	21	2	16	3	19	0 \$	-	100%	84%	16%	10%	90%	0.0
Culinary Arts	AMI Kids	Certified EKG Tech (CET)	X	2	2	0	2	0	2	0.1 \$	831.63	100%	100%	0%	100%	100%	0.2
	AMI Kids	ServSafe Manager	X	4	4	0	4	0	4	0.2 \$	3,326.50	100%	100%	0%	100%	100%	0.8
	BHS	ProStart Certificate of Achievement	X	4	4	0	4	0	4	0.2 \$	3,326.50	100%	100%	0%	0%	100%	0.8
	BHS	ProStart Certificate of Achievement	X	15	15	0	15	0	15	0.2 \$	12,474.38	100%	100%	0%	0%	100%	3.0
	BHS	SafeStaff Food Handler Certification		55	55	0	54	1	55	0 \$	-	100%	98%	2%	0%	100%	0.0
	BHS	SafeStaff Food Handler Certification		59	59	0	59	0	59	0 \$	-	100%	100%	0%	0%	100%	0.0
	BHS	ServSafe Manager	X	44	44	0	32	12	44	0.2 \$	26,612.01	100%	73%	27%	0%	100%	6.4
	BHS	ServSafe Manager	X	51	51	0	44	7	51	0.2 \$	36,591.52	100%	86%	14%	0%	100%	8.8
	CHS	SafeStaff Food Handler Certification		58	58	0	58	0	58	0 \$	-	100%	100%	0%	0%	100%	0.0
	CHS	ServSafe Manager	X	31	31	0	14	17	31	0.2 \$	11,642.76	100%	45%	55%	0%	100%	2.8
	MHS	SafeStaff Food Handler Certification		52	52	0	52	0	52	0 \$	-	100%	100%	0%	0%	100%	0.0
	MHS	SafeStaff Food Handler Certification		81	81	0	81	0	81	0 \$	-	100%	100%	0%	0%	100%	0.0
	MHS	ServSafe Manager	X	43	43	0	29	14	43	0.2 \$	24,117.14	100%	67%	33%	0%	100%	5.8
	PBMS	ProStart Certificate of Achievement	X	2	2	0	2	0	2	0.2 \$	1,663.25	100%	100%	0%	0%	100%	0.4
	PBMS	SafeStaff Food Handler Certification		50	50	0	50	0	50	0 \$	-	100%	100%	0%	0%	100%	0.0
	PBMS	ServSafe Manager	X	37	37	0	30	7	37	0.2 \$	24,948.76	100%	81%	19%	0%	100%	6.0
	THS	SafeStaff Food Handler Certification		63	63	0	63	0	63	0 \$	-	100%	100%	0%	0%	100%	0.0
THS	ServSafe Manager	X	57	57	0	45	12	57	0.2 \$	37,423.14	100%	79%	21%	0%	100%	9.0	
Digital Design	BHS	Adobe: Dreamweaver	X	7	7	0	5	2	7	0.2 \$	4,158.13	100%	71%	29%	0%	100%	1.0
	BHS	Adobe: Flash	X	18	18	2	11	5	16	0.2 \$	9,147.88	100%	69%	31%	11%	89%	2.2
	BHS	Adobe: Illustrator	X	41	41	0	33	8	41	0.1 \$	13,721.82	100%	80%	20%	0%	100%	3.3
	BHS	Adobe: InDesign	X	39	39	10	26	3	29	0.1 \$	10,811.13	100%	90%	10%	26%	74%	2.6
	BHS	Adobe: Photoshop	X	20	20	0	20	0	20	0.1 \$	8,316.25	100%	100%	0%	0%	100%	2.0
	BHS	Adobe: Premiere Pro	X	4	4	0	1	3	4	0.2 \$	831.63	100%	25%	75%	0%	100%	0.2
	CHS	Adobe: Illustrator	X	6	6	0	0	6	6	0.1 \$	-	100%	0%	100%	0%	100%	0.0
	CHS	Adobe: InDesign	X	16	16	0	1	15	16	0.1 \$	415.81	100%	6%	94%	0%	100%	0.1
	CHS	Adobe: Premiere Pro	X	1	1	0	0	1	1	0.1 \$	-	100%	0%	100%	0%	100%	0.0
	EHS	Adobe: Illustrator	X	44	44	0	31	13	44	0.1 \$	12,890.19	100%	70%	30%	0%	100%	3.1
	EHS	Adobe: InDesign	X	47	47	0	36	11	47	0.1 \$	14,969.26	100%	77%	23%	0%	100%	3.6
	EHS	Adobe: Photoshop	X	36	36	0	34	2	36	0.1 \$	14,137.63	100%	94%	6%	0%	100%	3.4
	EHS	Adobe: Premiere Pro	X	1	1	0	0	1	1	0.1 \$	-	100%	0%	100%	0%	100%	0.0
	MHS	Adobe: Illustrator	X	3	3	0	2	1	3	0.1 \$	831.63	100%	67%	33%	0%	100%	0.2
	MHS	Adobe: InDesign	X	42	42	0	28	14	42	0.1 \$	11,642.76	100%	67%	33%	0%	100%	2.8
MHS	Adobe: Photoshop	X	110	110	0	56	54	110	0.1 \$	23,285.51	100%	51%	49%	0%	100%	5.6	

2017-18 Industry Certification HS Results by Program

Program	School	Assessment	School Grade	# Students Identified	# Participants	# In Progress	# Passing	# Failing	# Completing Participants	Funding Weights	Potential CAPE Funding \$	% Participants	% Passing	% Failing	% In Progress	% Completing Participants	Potential Bonus FTE Calculation
Digital Design	MIHS	Adobe: Flash	X	2	2	0	0	2	2	0.2	\$ -	100%	0%	100%	0%	100%	0.0
	MIHS	Adobe: Illustrator	X	15	15	0	13	2	15	0.1	\$ 5,405.56	100%	87%	13%	0%	100%	1.3
	MIHS	Adobe: InDesign	X	27	27	0	27	0	27	0.1	\$ 11,226.94	100%	100%	0%	0%	100%	2.7
	MIHS	Adobe: Photoshop	X	9	9	0	9	0	9	0.1	\$ 3,742.31	100%	100%	0%	0%	100%	0.9
	MIHS	Adobe: Premiere Pro	X	9	9	0	8	1	9	0.1	\$ 3,326.50	100%	89%	11%	0%	100%	0.8
	RHS	Adobe: Illustrator	X	70	70	0	37	33	70	0.1	\$ 15,385.07	100%	53%	47%	0%	100%	3.7
	RHS	Adobe: InDesign	X	10	10	0	7	3	10	0.1	\$ 2,910.69	100%	70%	30%	0%	100%	0.7
	RHS	Adobe: Photoshop	X	69	69	2	30	37	67	0.1	\$ 12,474.38	100%	45%	55%	3%	97%	3.0
	RHS	Adobe: Premiere Pro	X	7	7	0	3	4	7	0.1	\$ 1,247.44	100%	43%	57%	0%	100%	0.3
	THS	Adobe: Dreamweaver	X	1	1	0	0	0	1	0.2	\$ -	100%	0%	100%	0%	100%	0.0
	THS	Adobe: Flash	X	12	12	0	8	4	12	0.2	\$ 6,653.00	100%	67%	33%	0%	100%	1.6
	THS	Adobe: Flash	X	7	7	0	6	1	7	0.2	\$ 4,989.75	100%	86%	14%	0%	100%	1.2
	THS	Adobe: Illustrator	X	18	18	0	17	1	18	0.1	\$ 7,068.82	100%	94%	6%	0%	100%	1.7
	THS	Adobe: Illustrator	X	23	23	0	22	1	23	0.1	\$ 9,147.88	100%	96%	4%	0%	100%	2.2
	THS	Adobe: InDesign	X	38	38	0	27	11	38	0.1	\$ 11,226.94	100%	71%	29%	0%	100%	2.7
	THS	Adobe: InDesign	X	50	50	0	42	8	50	0.1	\$ 17,464.13	100%	84%	16%	0%	100%	4.2
	THS	Adobe: Photoshop	X	58	58	0	53	5	58	0.1	\$ 22,038.07	100%	91%	9%	0%	100%	5.3
	THS	Adobe: Photoshop	X	1	1	0	1	0	1	0.1	\$ 415.81	100%	100%	0%	0%	100%	0.1
THS	Adobe: Photoshop	X	72	72	0	26	46	72	0.1	\$ 10,811.13	100%	36%	64%	0%	100%	2.6	
Digital Info Tech	AHS	MOS Bundle	X	44	44	37	4	3	7	0.2	\$ 3,326.50	100%	57%	43%	84%	16%	0.8
	Brevard Vrtl	MOS Bundle	X	2	2	0	2	0	2	0.2	\$ 1,663.25	100%	100%	0%	100%	100%	0.4
	Brevard Vrtl	MS Office Specialist: Word	X	1	1	0	1	0	1	0.025	\$ 103.95	100%	100%	0%	100%	100%	0.0
	CBHS	Microsoft Office Master	X	2	2	0	2	0	2	0.2	\$ 1,663.25	100%	100%	0%	0%	100%	0.4
	CBHS	MOS Bundle	X	49	49	4	26	19	45	0.2	\$ 21,622.26	100%	58%	42%	8%	92%	5.2
	CHS	Adobe: Photoshop	X	2	2	0	1	1	2	0.1	\$ 415.81	100%	50%	50%	0%	100%	0.1
	CHS	MOS Bundle	X	55	55	31	20	4	24	0.2	\$ 16,632.51	100%	83%	17%	56%	44%	4.0
	CHS	MOS Bundle	X	53	53	45	7	1	8	0.2	\$ 5,821.38	100%	88%	13%	85%	15%	1.4
	EGHS	MOS Bundle	X	66	66	62	1	3	4	0.2	\$ 831.63	100%	25%	75%	94%	6%	0.2
	HHS	MOS Bundle	X	134	134	111	15	8	23	0.2	\$ 12,474.38	100%	65%	35%	83%	17%	3.0
	HHS	MOS Bundle	X	42	42	0	18	24	42	0.2	\$ 14,969.26	100%	43%	57%	0%	100%	3.6
	HHS	MOS Bundle	X	45	45	0	22	23	45	0.2	\$ 18,295.76	100%	49%	51%	0%	100%	4.4
	HHS	MOS Bundle	X	18	18	0	15	3	18	0.2	\$ 12,474.38	100%	83%	17%	0%	100%	3.0
	MHS	MOS Bundle	X	160	160	59	101	0	101	0.2	\$ 83,994.16	100%	100%	0%	37%	63%	20.2
	MIHS	MOS Bundle	X	80	80	67	11	2	13	0.2	\$ 9,147.88	100%	85%	15%	84%	16%	2.2
	SCHS	MOS Bundle	X	35	35	27	7	1	8	0.2	\$ 5,821.38	100%	88%	13%	77%	23%	1.4
	SHS	MOS Bundle	X	36	36	25	11	0	11	0.2	\$ 9,147.88	100%	100%	0%	69%	31%	2.2
	THS	MOS Bundle	X	52	52	29	18	5	23	0.2	\$ 14,969.26	100%	78%	22%	56%	44%	3.6
THS	MOS Bundle	X	61	61	20	34	7	41	0.2	\$ 28,275.26	100%	83%	17%	33%	67%	6.8	
VHS	MOS Bundle	X	9	9	4	4	1	5	0.2	\$ 3,326.50	100%	80%	20%	44%	56%	0.8	
VHS	MOS Bundle	X	29	29	12	16	1	17	0.2	\$ 13,306.01	100%	94%	6%	41%	59%	3.2	

2017-18 Industry Certification HS Results by Program

Program	School	Assessment	School Grade	# Students Identified	# Participants	# In Progress	# Passing	# Failing	# Completing Participants	Funding Weights	Potential CAPE Funding \$	% Participants	% Passing	% Failing	% In Progress	% Completing Participants	Potential Bonus FTE Calculation
Digital Media/MM	AHS	Adobe: InDesign	X	43	43	0	10	33	43	0.1	\$ 4,158.13	100%	23%	77%	0%	100%	1.0
	AHS	Adobe: Photoshop	X	62	62	0	32	30	62	0.1	\$ 13,306.01	100%	52%	48%	0%	100%	3.2
	EGHS	Adobe: Dreamweaver	X	1	1	0	1	0	1	0.2	\$ 831.63	100%	100%	0%	0%	100%	0.2
	EGHS	Adobe: Illustrator	X	47	47	0	13	34	47	0.1	\$ 5,405.56	100%	28%	72%	0%	100%	1.3
	EGHS	Adobe: InDesign	X	9	9	0	1	8	9	0.1	\$ 415.81	100%	11%	89%	0%	100%	0.1
	EGHS	Adobe: Photoshop	X	83	83	0	34	49	83	0.1	\$ 14,137.63	100%	41%	59%	0%	100%	3.4
	EGHS	Adobe: Premiere Pro	X	112	112	0	20	92	112	0.1	\$ 8,316.25	100%	18%	82%	0%	100%	2.0
	HHS	Adobe: Illustrator	X	10	10	0	7	3	10	0.1	\$ 2,910.69	100%	70%	30%	0%	100%	0.7
	HHS	Adobe: InDesign	X	5	5	0	3	2	5	0.1	\$ 1,247.44	100%	60%	40%	0%	100%	0.3
	HHS	Adobe: Photoshop	X	100	100	0	48	52	100	0.1	\$ 19,959.01	100%	48%	52%	0%	100%	4.8
	HHS	Adobe: Premiere Pro	X	24	24	0	6	18	24	0.1	\$ 2,494.88	100%	25%	75%	0%	100%	0.6
	PBMS	Adobe: Dreamweaver	X	1	1	0	0	1	1	0.2	\$ -	100%	0%	100%	0%	100%	0.0
	PBMS	Adobe: Illustrator	X	9	9	3	0	6	6	0.1	\$ -	100%	0%	100%	33%	67%	0.0
	PBMS	Adobe: Photoshop	X	85	85	1	15	69	84	0.1	\$ 6,237.19	100%	18%	82%	1%	99%	1.5
	PBMS	Adobe: Premiere Pro	X	10	10	2	1	7	8	0.1	\$ 415.81	100%	13%	88%	20%	80%	0.1
	SHS	Adobe: Dreamweaver	X	1	1	0	1	0	1	0.2	\$ 831.63	100%	100%	0%	0%	100%	0.2
	SHS	Adobe: Flash	X	1	1	0	1	0	1	0.2	\$ 831.63	100%	100%	0%	0%	100%	0.2
	SHS	Adobe: Illustrator	X	28	28	3	12	13	25	0.1	\$ 4,989.75	100%	48%	52%	11%	89%	1.2
	SHS	Adobe: InDesign	X	24	24	5	10	9	19	0.1	\$ 4,158.13	100%	53%	47%	21%	79%	1.0
	SHS	Adobe: Photoshop	X	52	52	5	20	27	47	0.1	\$ 8,316.25	100%	43%	57%	10%	90%	2.0
	SHS	Adobe: Premiere Pro	X	10	10	0	1	9	10	0.1	\$ 415.81	100%	10%	90%	0%	100%	0.1
	SHS	Adobe: Premiere Pro	X	15	15	9	2	4	6	0.1	\$ 831.63	100%	33%	67%	60%	40%	0.2
	VHS	Adobe: Illustrator	X	1	1	0	1	0	1	1	\$ 4,158.13	100%	100%	0%	0%	100%	1.0
VHS	Adobe: InDesign	X	39	39	0	39	0	39	0.1	\$ 16,216.69	100%	100%	0%	0%	100%	3.9	
VHS	Adobe: Photoshop	X	56	56	0	30	26	56	0.1	\$ 12,474.38	100%	54%	46%	0%	100%	3.0	
DIGITAL ART IMG2	WSHS	Adobe: Photoshop	X	2	2	0	2	0	2	0.1	\$ 831.63	100%	100%	0%	0%	100%	0.2
Drafting	BHS	Autodesk - Certified User AutoCAD	X	3	3	0	1	2	3	0.2	\$ 831.63	100%	33%	67%	0%	100%	0.2
	BHS	Autodesk - Certified User Inventor	X	27	27	0	26	1	27	0.2	\$ 21,622.26	100%	96%	4%	0%	100%	5.2
	BHS	Autodesk - Certified User Revit	X	49	49	8	6	35	41	0.2	\$ 4,989.75	100%	15%	85%	16%	84%	1.2
	CHS	Autodesk - Certified User AutoCAD	X	27	27	0	23	4	27	0.2	\$ 19,127.38	100%	85%	15%	0%	100%	4.6
	SCHS	Autodesk - Certified User AutoCAD	X	22	22	0	22	0	22	0.2	\$ 18,295.76	100%	100%	0%	0%	100%	4.4
	SCHS	Autodesk - Certified User AutoCAD Prof	x	8	8	0	5	3	8	0.2	\$ 4,158.13	100%	63%	38%	0%	100%	1.0
	SCHS	Autodesk - Certified User Inventor	X	11	11	0	11	0	11	0.2	\$ 9,147.88	100%	100%	0%	0%	100%	2.2
	SCHS	Autodesk - Certified User Revit	X	9	9	0	6	3	9	0.2	\$ 4,989.75	100%	67%	33%	0%	100%	1.2

2017-18 Industry Certification HS Results by Program

Program	School	Assessment	School Grade	# Students Identified	# Participants	# In Progress	# Passing	# Failing	# Completing Participants	Funding Weights	Potential CAPE Funding \$	% Participants	% Passing	% Failing	% In Progress	% Completing Participants	Potential Bonus FTE Calculation
Early Childhood Ed	EGHS	CPR/First Aid		9	9	0	9	0	9	0 \$	-	100%	100%	0%	0%	100%	0.0
	EGHS	Intro to Childcare Training Certificate		9	9	0	9	0	9	0 \$	-	100%	100%	0%	0%	100%	0.0
	EGHS	National CDA	X	1	1	0	1	0	1	0.2 \$	831.63	100%	100%	0%	0%	100%	0.2
	EGHS	Staff Credential		9	9	0	9	0	9	0 \$	-	100%	100%	0%	0%	100%	0.0
	MIHS	CPR/First Aid		12	12	0	12	0	12	0 \$	-	100%	100%	0%	0%	100%	0.0
	MIHS	Intro to Childcare Training Certificate		12	12	0	12	0	12	0 \$	-	100%	100%	0%	0%	100%	0.0
	MIHS	Staff Credential		12	12	0	12	0	12	0 \$	-	100%	100%	0%	0%	100%	0.0
	PBMS	CPR/First Aid		15	15	0	15	0	15	0 \$	-	100%	100%	0%	0%	100%	0.0
	PBMS	Intro to Childcare Training Certificate		13	13	0	12	1	13	0 \$	-	100%	92%	8%	0%	100%	0.0
	PBMS	National CDA	X	3	3	0	3	0	3	0.2 \$	2,494.88	100%	100%	0%	0%	100%	0.6
	PBMS	Staff Credential		13	13	0	12	1	13	0 \$	-	100%	92%	8%	0%	100%	0.0
	SHS	CPR/First Aid		10	10	0	10	0	10	0 \$	-	100%	100%	0%	0%	100%	0.0
	SHS	Intro to Childcare Training Certificate		10	10	0	10	0	10	0 \$	-	100%	100%	0%	0%	100%	0.0
	SHS	Staff Credential		10	10	0	10	0	10	0 \$	-	100%	100%	0%	0%	100%	0.0
VHS	VHS	CPR/First Aid		11	11	0	11	0	11	0 \$	-	100%	100%	0%	0%	100%	0.0
	VHS	Intro to Childcare Training Certificate		14	14	0	8	6	14	0 \$	-	100%	57%	43%	0%	100%	0.0
	VHS	Staff Credential		14	14	0	8	6	14	0 \$	-	100%	57%	43%	0%	100%	0.0
	VHS	Staff Credential		14	14	0	8	6	14	0 \$	-	100%	57%	43%	0%	100%	0.0
Embry Riddle Dual Enroll	BHS	Small UAS Safety Certification	X	2	2	0	2	0	2	0.2 \$	1,663.25	100%	100%	0%	0%	100%	0.4
	THS	Small UAS Safety Certification	X	2	2	0	2	0	2	0.2 \$	1,663.25	100%	100%	0%	0%	100%	0.4
Emergency Med Responder	AHS	EMR	X	18	18	0	13	5	18	0.1 \$	5,405.56	100%	72%	28%	0%	100%	1.3
	MHS	CPR/First Aid		20	20	0	20	0	20	0 \$	-	100%	100%	0%	0%	100%	0.0
	MHS	EMR	X	18	18	0	4	14	18	0.1 \$	1,663.25	100%	22%	78%	0%	100%	0.4
	AHS	CPR/First Aid		18	18	0	18	0	18	0 \$	-	100%	100%	0%	0%	100%	0.0
Engineering Technology	BHS	Solidworks	X	26	26	0	16	10	26	0.2 \$	13,306.01	100%	62%	38%	0%	100%	3.2
	MHS	Solidworks	X	49	49	0	36	13	49	0.2 \$	29,938.51	100%	73%	27%	0%	100%	7.2
	PBMS	Solidworks	X	13	13	1	6	6	12	0.2 \$	4,989.75	100%	50%	50%	8%	92%	1.2
	SCHS	Solidworks	X	20	20	0	17	3	20	0.2 \$	14,137.63	100%	85%	15%	0%	100%	3.4
Environmental Water	HHS	Wastewater Treatment Plant Oper C	X	18	18	3	2	13	15	0.1 \$	831.63	100%	13%	87%	17%	83%	0.2
	HHS	Water Treat Plant Oper Lvl C	X	18	18	0	8	10	18	0.1 \$	3,326.50	100%	44%	56%	0%	100%	0.8
Fashion Design Services	CBHS	NOCTI - Apparel & Text Prod & Mer		3	3	0	2	1	3	0 \$	-	100%	67%	33%	0%	100%	0.0
	RHS	NOCTI - Apparel & Text Prod & Mer		7	7	0	5	2	7	0 \$	-	100%	71%	29%	0%	100%	0.0
	SHS	NOCTI - Apparel & Text Prod & Mer		13	13	0	13	0	13	0 \$	-	100%	100%	0%	0%	100%	0.0
	THS	Adobe: Illustrator	X	11	11	0	3	8	11	0.1 \$	1,247.44	100%	27%	73%	0%	100%	0.3
	THS	NOCTI - Apparel & Text Prod & Mer		1	1	0	1	0	1	0 \$	-	100%	100%	0%	0%	100%	0.0
Interior Design	VHS	Adobe: Illustrator	X	24	24	0	13	11	24	0.1 \$	5,405.56	100%	54%	46%	0%	100%	1.3
	VHS	Chief Architect	X	22	22	0	16	6	22	0.2 \$	13,306.01	100%	73%	27%	0%	100%	3.2
Finance Academy	VHS	MOS Bundle	X	1	1	0	1	0	1	0.2 \$	831.63	100%	100%	0%	0%	100%	0.2
	VHS	MOS Bundle	X	63	63	10	42	11	53	0.2 \$	34,928.27	100%	79%	21%	16%	84%	8.4
	VHS	MOS Bundle	X	2	2	0	2	0	2	0.2 \$	1,663.25	100%	100%	0%	0%	100%	0.4

2017-18 Industry Certification HS Results by Program

Program	School	Assessment	School Grade	# Students Identified	# Participants	# In Progress	# Passing	# Failing	# Completing Participants	Funding Weights	Potential CAPE Funding \$	% Participants	% Passing	% Failing	% In Progress	% Completing Participants	Potential Bonus FTE Calculation
Food Science	AHS	ServSafe Manager	X	27	27	0	16	11	27	0.2	\$ 13,306.01	100%	59%	41%	0%	100%	3.2
	HHS	ServSafe Manager	X	60	60	0	36	24	60	0.2	\$ 29,938.51	100%	60%	40%	0%	100%	7.2
	MHS	ServSafe Manager	X	2	2	0	0	2	2	0.2	\$ -	100%	0%	100%	0%	100%	0.0
	MIHS	ServSafe Manager	X	17	17	0	15	2	17	0.2	\$ 12,474.38	100%	88%	12%	0%	100%	3.0
	SCHS	ServSafe Manager	X	10	10	0	2	8	10	0.2	\$ 1,663.25	100%	20%	80%	0%	100%	0.4
	SHS	ServSafe Manager	X	14	14	0	6	8	14	0.2	\$ 4,989.75	100%	43%	57%	0%	100%	1.2
Game & Simulation	VHS	ServSafe Manager	X	12	12	0	9	3	12	0.2	\$ 7,484.63	100%	75%	25%	0%	100%	1.8
	PBMS	ToonBoom Harmony Premium	X	1	1	0	0	1	1	0.1	\$ -	100%	0%	100%	0%	100%	0.0
Health Science	PBMS	ToonBoom Storyboard Pro	X	7	7	0	0	7	7	0.1	\$ -	100%	0%	100%	0%	100%	0.0
	AHS	CPR/First Aid		66	66	0	66	0	66	0	\$ -	100%	100%	0%	0%	100%	0.0
	AHS	CPR/First Aid		86	86	0	86	0	86	0	\$ -	100%	100%	0%	0%	100%	0.0
	BHS	CMAA	X	30	30	0	30	0	30	0.1	\$ 12,474.38	100%	100%	0%	0%	100%	3.0
	BHS	CPR/First Aid		14	14	0	14	0	14	0	\$ -	100%	100%	0%	0%	100%	0.0
	BHS	CPR/First Aid		58	58	0	58	0	58	0	\$ -	100%	100%	0%	0%	100%	0.0
	CHS	CMAA	X	15	15	0	11	4	15	0.1	\$ 4,573.94	100%	73%	27%	0%	100%	1.1
	CHS	CPR/First Aid		25	25	0	25	0	25	0	\$ -	100%	100%	0%	0%	100%	0.0
	EGHS	CMAA	X	16	16	0	16	0	16	0.1	\$ 6,653.00	100%	100%	0%	0%	100%	1.6
	EGHS	CPR/First Aid		30	30	0	30	0	30	0	\$ -	100%	100%	0%	0%	100%	0.0
	HHS	CMAA	X	98	98	0	79	19	98	0.1	\$ 32,849.20	100%	81%	19%	0%	100%	7.9
	HHS	CPR/First Aid		98	98	0	98	0	98	0	\$ -	100%	100%	0%	0%	100%	0.0
	MHS	CPR/First Aid		34	34	0	34	0	34	0	\$ -	100%	100%	0%	0%	100%	0.0
	PBMS	CPR/First Aid		39	39	0	39	0	39	0	\$ -	100%	100%	0%	0%	100%	0.0
RHS	CPR/First Aid		124	124	0	124	0	124	0	\$ -	100%	100%	0%	0%	100%	0.0	
Health Science - Dental	VHS	CMAA	X	27	27	0	24	3	27	0.1	\$ 9,979.50	100%	89%	11%	0%	100%	2.4
	VHS	CPR/First Aid		29	29	0	29	0	29	0	\$ -	100%	100%	0%	0%	100%	0.0
Hosp & Tourism	MIHS	Adobe: InDesign	X	5	5	0	5	0	5	0.1	\$ 2,079.06	100%	100%	0%	0%	100%	0.5
	MIHS	Adobe: Photoshop	X	1	1	0	1	0	1	0.1	\$ 415.81	100%	100%	0%	0%	100%	0.1
	MIHS	MOS Bundle	X	11	11	5	5	1	6	0.2	\$ 4,158.13	100%	83%	17%	45%	55%	1.0
	RHS	MOS Bundle	X	31	31	1	11	19	30	0.2	\$ 9,147.88	100%	37%	63%	3%	97%	2.2
Int'l Business	CBHS	Microsoft Office Master	X	1	1	0	1	0	1	0.2	\$ 831.63	100%	100%	0%	0%	100%	0.2
	CBHS	MOS Bundle	X	35	35	3	17	15	32	0.2	\$ 14,137.63	100%	53%	47%	9%	91%	3.4
Introd Engr Design	Odyssey	Autodesk - Certified User Inventor	X	19	19	7	5	7	12	0.2	\$ 4,158.13	100%	42%	58%	37%	63%	1.0
Journalism	AHS	Adobe: Premiere Pro	X	22	22	0	0	22	22	0.1	\$ -	100%	0%	100%	0%	100%	0.0
Machining Tech	BHS	MSSC Certified Production Technician	X	63	63	61	2	0	2	0.5	\$ 4,158.13	100%	100%	0%	97%	3%	1.0
Marine Tech	EGHS	FLADA	X	16	16	0	8	8	16	0.1	\$ 3,326.50	100%	50%	50%	0%	100%	0.8
Marketing Management	CBHS	Adobe: InDesign	X	9	9	0	0	9	9	0.1	\$ -	100%	0%	100%	0%	100%	0.0
	SHS	Adobe: InDesign	X	10	10	4	3	3	6	0.1	\$ 1,247.44	100%	50%	50%	40%	60%	0.3
Medical Admin Specialist	HHS	CMAA	X	43	43	2	11	30	41	0.1	\$ 4,573.94	100%	27%	73%	5%	95%	1.1
	HHS	CPR/First Aid		41	41	0	41	0	41	0	\$ -	100%	100%	0%	0%	100%	0.0

2017-18 Industry Certification HS Results by Program

Program	School	Assessment	School Grade	# Students Identified	# Participants	# In Progress	# Passing	# Failing	# Completing Participants	Funding Weights	Potential CAPE Funding \$	% Participants	% Passing	% Failing	% In Progress	% Completing Participants	Potential Bonus FTE Calculation
Patient Care Assisting	AHS	C N A	X	20	20	0	17	3	20	0.1 \$	7,068.82	100%	85%	15%	0%	100%	1.7
	AHS	CPR/First Aid		40	40	0	40	0	40	0 \$	-	100%	100%	0%	0%	100%	0.0
	BHS	C N A	X	11	11	0	11	0	11	0.1 \$	4,573.94	100%	100%	0%	0%	100%	1.1
	BHS	CPR/First Aid		9	9	0	9	0	9	0 \$	-	100%	100%	0%	0%	100%	0.0
	MHS	C N A	X	14	14	0	14	0	14	0.1 \$	5,821.38	100%	100%	0%	0%	100%	1.4
	MHS	CPR/First Aid		14	14	0	14	0	14	0 \$	-	100%	100%	0%	0%	100%	0.0
	PBMS	C N A	X	15	15	0	15	0	15	0.1 \$	6,237.19	100%	100%	0%	0%	100%	1.5
	RHS	C N A	X	15	15	0	15	0	15	0.1 \$	6,237.19	100%	100%	0%	0%	100%	1.5
	RHS	CPR/First Aid		30	30	0	30	0	30	0 \$	-	100%	100%	0%	0%	100%	0.0
	THS	C N A	X	27	27	0	27	0	27	0.1 \$	11,226.94	100%	100%	0%	0%	100%	2.7
THS	CPR/First Aid		27	27	0	27	0	27	0 \$	-	100%	100%	0%	0%	100%	0.0	
THS	CPR/First Aid		60	60	0	60	0	60	0 \$	-	100%	100%	0%	0%	100%	0.0	
PLTW - ENGINEERING	MIHS	Autodesk - Certified User Inventor	X	41	41	0	14	27	41	0.2 \$	11,642.76	100%	34%	66%	0%	100%	2.8
Teacher Assisting	SCHS	ParaPro		4	4	0	2	2	4	0 \$	-	100%	50%	50%	0%	100%	0.0
Technical Design	EGHS	Autodesk - Certified User AutoCAD	X	79	79	0	51	28	79	0.2 \$	42,412.89	100%	65%	35%	0%	100%	10.2
	EGHS	Autodesk - Certified User Revit	X	3	3	0	0	3	3	0.2 \$	-	100%	0%	100%	0%	100%	0.0
	HHS	Autodesk - Certified User AutoCAD	X	21	21	0	11	10	21	0.2 \$	9,147.88	100%	52%	48%	0%	100%	2.2
	HHS	Autodesk - Certified User Inventor	X	12	12	0	6	6	12	0.2 \$	4,989.75	100%	50%	50%	0%	100%	1.2
	PBMS	Autodesk - Certified User AutoCAD	X	8	8	1	2	5	7	0.2 \$	1,663.25	100%	29%	71%	13%	88%	0.4
	PBMS	Autodesk - Certified User Inventor	X	6	6	0	4	2	6	0.2 \$	3,326.50	100%	67%	33%	0%	100%	0.8
	RHS	Autodesk - Certified User AutoCAD	X	40	40	0	36	4	40	0.2 \$	29,938.51	100%	90%	10%	0%	100%	7.2
	RHS	Autodesk - Certified User Inventor	X	3	3	0	2	1	3	0.2 \$	1,663.25	100%	67%	33%	0%	100%	0.4
	RHS	Autodesk - Certified User Revit	X	32	32	0	5	27	32	0.2 \$	4,158.13	100%	16%	84%	0%	100%	1.0
	SHS	Autodesk - Certified User AutoCAD	X	36	36	0	33	3	36	0.2 \$	27,443.64	100%	92%	8%	0%	100%	6.6
SHS	Autodesk - Certified User Inventor	X	4	4	0	1	3	4	0.2 \$	831.63	100%	25%	75%	0%	100%	0.2	
SHS	Autodesk - Certified User Revit	X	4	4	0	0	4	4	0.2 \$	-	100%	0%	100%	0%	100%	0.0	
TV Production	BHS	Adobe: Premiere Pro	X	63	63	0	47	16	63	0.1 \$	19,543.20	100%	75%	25%	0%	100%	4.7
	EHS	Adobe: Premiere Pro	X	40	40	0	36	4	40	0.1 \$	14,969.26	100%	90%	10%	0%	100%	3.6
	SCHS	Adobe: Photoshop	X	1	1	0	0	1	1	0.1 \$	-	100%	0%	100%	0%	100%	0.0
	SCHS	Adobe: Premiere Pro	X	58	58	0	11	47	58	0.1 \$	4,573.94	100%	19%	81%	0%	100%	1.1
	THS	Adobe: Premiere Pro	X	39	39	0	5	34	39	0.1 \$	2,079.06	100%	13%	87%	0%	100%	0.5
VHS	Adobe: Premiere Pro	X	56	56	0	38	18	56	0.1 \$	15,800.88	100%	68%	32%	0%	100%	3.8	
Web App Dev & Prog	PBMS	CIW - Advanced HTML5 & CSS3 Spec	X	6	6	0	0	6	6	0.2 \$	-	100%	0%	100%	0%	100%	0.0
	PBMS	CIW - JavaScript Specialist	X	7	7	0	3	4	7	0.2 \$	2,494.88	100%	43%	57%	0%	100%	0.6

2017-18 Industry Certification HS Results by Program

Program	School	Assessment	School Grade	# Students Identified	# Participants	# In Progress	# Passing	# Failing	# Completing Participants	Funding Weights	Potential CAPE Funding \$	% Participants	% Passing	% Failing	% In Progress	% Completing Participants	Potential Bonus FTE Calculation
Web Development	CHS	Adobe: Dreamweaver	X	6	6	0	2	4	6	0.2	\$ 1,663.25	100%	33%	67%	0%	100%	0.4
	CHS	Adobe: Flash	X	1	1	0	0	1	1	0.2	\$ -	100%	0%	100%	0%	100%	0.0
	MHS	Adobe: Dreamweaver	X	38	38	0	28	10	38	0.2	\$ 23,285.51	100%	74%	26%	0%	100%	5.6
	MHS	Adobe: Flash	X	34	34	0	22	12	34	0.2	\$ 18,295.76	100%	65%	35%	0%	100%	4.4
	MHS	Adobe: Photoshop	X	11	11	0	7	4	11	0.1	\$ 2,910.69	100%	64%	36%	0%	100%	0.7
	MHS	Adobe: Premiere Pro	X	5	5	0	3	2	5	0.1	\$ 1,247.44	100%	60%	40%	0%	100%	0.3
	MIHS	Adobe: Dreamweaver	X	36	36	0	36	0	36	0.2	\$ 29,938.51	100%	100%	0%	0%	100%	7.2
	MIHS	Adobe: Flash	X	22	22	0	21	1	22	0.2	\$ 17,464.13	100%	95%	5%	0%	100%	4.2
	THS	Adobe: Dreamweaver	X	9	9	0	7	2	9	0.2	\$ 5,821.38	100%	78%	22%	0%	100%	1.4
	THS	Adobe: Flash	X	1	1	0	1	0	1	0.2	\$ 831.63	100%	100%	0%	0%	100%	0.2
	THS	Adobe: Illustrator	X	1	1	0	1	0	1	0.1	\$ 415.81	100%	100%	0%	0%	100%	0.1
	THS	Adobe: Photoshop	X	4	4	0	4	0	4	0.1	\$ 1,663.25	100%	100%	0%	0%	100%	0.4

Middle / JR High Industry Certification By Program



This page intentionally left blank.

2017-18 Industry Certification MS Results by Program

Program	School	Assessment	School Grade	# Students Identified	# Participants	Didn't Test	# In Progress	# Passing	# Failing	# Completing Participants	Funding Weights	Potential Funding \$	% Participants	% Passing	% Failing	% In Progress	% Completing Participants	Cost of Assessments & Test Prep Used	Potential Bonus FTE Calculation
Cptr Appl Bus	CBHSMS	IC3 - Computing Fund		13	13	0	0	5	8	13	0.025	\$ 519.77	100%	38%	62%	0%	100%		0.125
	CBHSMS	IC3 - Computing Fund		1	1	0	0	0	1	1	0.025	\$ -	100%	0%	100%	0%	100%		0.000
	CBHSMS	IC3 - Key Applications		69	68	1	0	37	31	68	0.025	\$ 3,846.27	99%	54%	46%	0%	100%		0.925
	CBHSMS	IC3 - Key Applications		43	38	5	0	19	19	38	0.025	\$ 1,975.11	88%	50%	50%	0%	100%		0.475
	CBHSMS	IC3 - Living Online		28	28	0	0	18	10	28	0.025	\$ 1,871.16	100%	64%	36%	0%	100%		0.450
	CBHSMS	IC3 - Living Online		21	21	0	0	10	11	21	0.025	\$ 1,039.53	100%	48%	52%	0%	100%		0.250
	CHSMS	IC3 - Key Applications		124	51	73	0	49	2	51	0.025	\$ 5,093.71	41%	96%	4%	0%	100%		1.225
	CMS	IC3 - Computing Fund		36	36	0	0	5	31	36	0.025	\$ 519.77	100%	14%	86%	0%	100%		0.125
	CMS	IC3 - Computing Fund		6	6	0	0	3	3	6	0.025	\$ 311.86	100%	50%	50%	0%	100%		0.075
	CMS	IC3 - Key Applications		170	98	72	0	56	42	98	0.025	\$ 5,821.38	58%	57%	43%	0%	100%		1.400
	CMS	IC3 - Key Applications		165	92	73	0	64	28	92	0.025	\$ 6,653.00	56%	70%	30%	0%	100%		1.600
	CMS	IC3 - Living Online		48	48	0	0	23	25	48	0.025	\$ 2,390.92	100%	48%	52%	0%	100%		0.575
	CMS	IC3 - Living Online		13	13	0	0	10	3	13	0.025	\$ 1,039.53	100%	77%	23%	0%	100%		0.250
	CMS	MS Office Specialist: Word		1	1	0	0	1	0	1	0.025	\$ 103.95	100%	100%	0%	0%	100%		0.025
	DMS	IC3 - Key Applications		305	199	106	0	106	93	199	0.025	\$ 11,019.04	65%	53%	47%	0%	100%		2.650
	HMS	IC3 - Key Applications		121	73	48	0	32	41	73	0.025	\$ 3,326.50	60%	44%	56%	0%	100%		0.800
	JAMS	IC3 - Key Applications		146	135	11	0	101	34	135	0.025	\$ 10,499.27	92%	75%	25%	0%	100%		2.525
	JAMS	IC3 - Spark		1	1	0	0	1	0	1	0.025	\$ 103.95	100%	100%	0%	0%	100%		0.025
	JEMS	IC3 - Key Applications		113	85	28	0	50	35	85	0.025	\$ 5,197.66	75%	59%	41%	0%	100%		1.250
	JEMS	IC3 - Living Online		1	1	0	0	0	1	1	0.025	\$ -	100%	0%	100%	0%	100%		0.000
	JEMS	IC3 - Computer Fundamentals		2	2	0	0	0	2	2	0.025	\$ -	100%	0%	100%	0%	100%		0.000
	JOMS	IC3 - Key Applications		150	6	144	0	1	5	6	0.025	\$ 103.95	4%	17%	83%	0%	100%		0.025
	JOMS	MS Office Specialist: Word		1	1	0	0	1	0	1	0.025	\$ 103.95	100%	100%	0%	0%	100%		0.025
	KMS	IC3 - Key Applications		148	72	76	0	66	6	72	0.025	\$ 6,860.91	49%	92%	8%	0%	100%		1.650
	MAMS	IC3 - Computing Fund		14	14	0	0	2	12	14	0.025	\$ 207.91	100%	14%	86%	0%	100%		0.050
	MAMS	IC3 - Key Applications		130	77	53	0	34	43	77	0.025	\$ 3,534.41	59%	44%	56%	0%	100%		0.850
	MAMS	IC3 - Living Online		2	2	0	0	1	1	2	0.025	\$ 103.95	100%	50%	50%	0%	100%		0.025
	SCHSMS	IC3 - Computing Fund		17	17	0	0	7	10	17	0.025	\$ 727.67	100%	41%	59%	0%	100%		0.175
	SCHSMS	IC3 - Key Applications		57	57	0	0	40	17	57	0.025	\$ 4,158.13	100%	70%	30%	0%	100%		1.000
	SCHSMS	IC3 - Living Online		4	4	0	0	4	0	4	0.025	\$ 415.81	100%	100%	0%	0%	100%		0.100
	SWMS	IC3 - Computing Fund		23	23	0	0	2	21	23	0.025	\$ 207.91	100%	9%	91%	0%	100%		0.050
	SWMS	IC3 - Key Applications		216	176	40	0	115	61	176	0.025	\$ 11,954.61	81%	65%	35%	0%	100%		2.875
	SWMS	IC3 - Living Online		74	74	0	0	31	43	74	0.025	\$ 3,222.55	100%	42%	58%	0%	100%		0.775

2017-18 Industry Certification MS Results by Program

Program	School	Assessment	School Grade	# Students Identified	# Participants	Didn't Test	# In Progress	# Passing	# Failing	# Completing Participants	Funding Weights	Potential Funding \$	% Participants	% Passing	% Failing	% In Progress	% Completing Participants	Cost of Assessments & Test Prep Used	Potential Bonus FTE Calculation
Digital Info Tech	CHSMS	MOS Bundle	X	21	19	2	8	11	0	11	0.100	\$ 4,573.94	90%	100%	0%	42%	58%		1.100
	CHSMS	MS Office Specialist: Excel		2	2	0	0	2	0	2	0.025	\$ 207.91	100%	100%	0%	0%	100%		0.050
	CHSMS	MS Office Specialist: Word		8	8	0	0	8	0	8	0.025	\$ 831.63	100%	100%	0%	0%	100%		0.200
	CMS	IC3 - Computing Fund		7	7	0	0	3	4	7	0.025	\$ 311.86	100%	43%	57%	0%	100%		0.075
	CMS	IC3 - Key Applications		8	8	0	0	8	0	8	0.025	\$ 831.63	100%	100%	0%	0%	100%		0.200
	CMS	IC3 - Living Online		12	12	0	0	9	3	12	0.025	\$ 935.58	100%	75%	25%	0%	100%		0.225
	CMS	IC3 - Spark		1	1	0	0	1	0	1	0.025	\$ 103.95	100%	100%	0%	0%	100%		0.025
	CMS	MOS Bundle	X	83	52	31	20	32	0	32	0.100	\$ 13,306.01	63%	100%	0%	38%	62%		3.200
	CMS	MS Office Master	X	3	3	0	0	3	0	3	0.100	\$ 1,247.44	100%	100%	0%	0%	100%		0.300
	CMS	MS Office Specialist: Word		20	20	0	0	20	0	20	0.025	\$ 2,079.06	100%	100%	0%	0%	100%		0.500
	HMS	IC3 - Key Applications		3	3	0	0	0	3	3	0.025	\$ -	100%	0%	100%	0%	100%		0.000
	HMS	MOS Bundle	X	71	63	8	8	55	0	55	0.100	\$ 22,869.70	89%	100%	0%	13%	87%		5.500
	HMS	MS Office Specialist: Word		8	8	0	0	8	0	8	0.025	\$ 831.63	100%	100%	0%	0%	100%		0.200
	JAMS	IC3 - Key Applications		1	1	0	0	1	0	1	0.025	\$ 103.95	100%	100%	0%	0%	100%		0.025
	JAMS	MOS Bundle	X	33	31	2	22	9	0	9	0.100	\$ 3,742.31	94%	100%	0%	71%	29%		0.900
	JAMS	MS Office Specialist: Excel		1	1	0	0	1	0	1	0.025	\$ 103.95	100%	100%	0%	0%	100%		0.025
	JAMS	MS Office Specialist: Word		22	22	0	0	22	0	22	0.025	\$ 2,286.97	100%	100%	0%	0%	100%		0.550
	JEMS	IC3 - Key Applications		1	1	0	0	0	1	1	0.025	\$ -	100%	0%	100%	0%	100%		0.000
	JEMS	MOS Bundle	X	58	35	23	22	13	0	13	0.100	\$ 5,405.56	60%	100%	0%	63%	37%		1.300
	JEMS	MS Office Specialist: Excel		4	4	0	0	4	0	4	0.025	\$ 415.81	100%	100%	0%	0%	100%		0.100
	JEMS	MS Office Specialist: Word		22	22	0	0	22	0	22	0.025	\$ 2,286.97	100%	100%	0%	0%	100%		0.550
	JOMS	MOS Bundle	X	41	16	25	10	6	0	6	0.100	\$ 2,494.88	39%	100%	0%	63%	38%		0.600
	JOMS	MS Office Specialist: Excel		7	7	0	0	7	0	7	0.025	\$ 727.67	100%	100%	0%	0%	100%		0.175
	JOMS	MS Office Specialist: Word		9	9	0	0	9	0	9	0.025	\$ 935.58	100%	100%	0%	0%	100%		0.225
	KMS	MOS Bundle	X	52	52	0	3	49	0	49	0.100	\$ 20,374.82	100%	100%	0%	6%	94%		4.900
	KMS	MS Office Specialist: Excel		2	2	0	0	2	0	2	0.025	\$ 207.91	100%	100%	0%	0%	100%		0.050
	KMS	MS Office Specialist: Word		2	2	0	0	2	0	2	0.025	\$ 207.91	100%	100%	0%	0%	100%		0.050
	MAMS	IC3 - Key Applications		1	1	0	0	0	1	1	0.025	\$ -	100%	0%	100%	0%	100%		0.000
	MAMS	MOS Bundle	X	44	22	22	16	6	0	6	0.100	\$ 2,494.88	50%	100%	0%	73%	27%		0.600
	MAMS	MS Office Specialist: Word		16	16	0	0	16	0	16	0.025	\$ 1,663.25	100%	100%	0%	0%	100%		0.400
	SCHSMS	MOS Bundle	X	20	9	11	6	3	0	3	0.100	\$ 1,247.44	45%	100%	0%	67%	33%		0.300
	SCHSMS	MS Office Specialist: Excel		6	6	0	0	6	0	6	0.025	\$ 623.72	100%	100%	0%	0%	100%		0.150
	STMS	MS Office Specialist: Excel		40	40	0	39	1	0	1	0.025	\$ 103.95	100%	100%	0%	98%	3%		0.025
	STMS	MS Office Specialist: Word		11	11	0	0	11	0	11	0.025	\$ 1,143.48	100%	100%	0%	0%	100%		0.275
	SWMS	IC3 - Key Applications		10	10	0	0	2	8	10	0.025	\$ 207.91	100%	20%	80%	0%	100%		0.050
	SWMS	MOS Bundle	X	38	31	7	10	20	1	21	0.100	\$ 8,316.25	82%	95%	5%	32%	68%		2.000
	SWMS	MS Office Specialist: Excel		4	4	0	0	4	0	4	0.025	\$ 415.81	100%	100%	0%	0%	100%		0.100
	SWMS	MS Office Specialist: Word		9	9	0	0	9	0	9	0.025	\$ 935.58	100%	100%	0%	0%	100%		0.225

This page intentionally left blank.

Brevard Public Schools
2018-19 Return on Investment - Industry Certifications
Parent Notification of Cost Savings

Certification Name	Retail Exam Cost	Cost of training	Articulated College credits	Cost of College credit*	Total cost
Adobe Certified Associate: Flash / Animate	\$180.00		3	\$420.22	\$600.22
Adobe Certified Associate: Dreamweaver	\$180.00		3	\$420.22	\$600.22
Adobe Certified Associate: Illustrator	\$180.00			\$0.00	\$180.00
Adobe Certified Associate: InDesign	\$180.00			\$0.00	\$180.00
Adobe Certified Associate: Photoshop cloud	\$180.00			\$0.00	\$180.00
Adobe Certified Associate: Premiere Pro	\$180.00			\$0.00	\$180.00
Adobe Certified Expert: Premiere Pro	\$180.00			\$0.00	\$180.00
Adobe Certified Expert: After Effects	\$180.00			\$0.00	\$180.00
Aerospace/Aircraft Assembly (AAA)	\$125.00		9	\$1,060.66	\$1,185.66
Air Conditioning Service Technician - NATE	\$500.00		3	\$420.22	\$920.22
ASE Automotive Maintenance and Light Repair	\$30.00		3	\$420.22	\$450.22
ASE Entry-Level - Auto: Automobile Service Technology	\$40.00			\$0.00	\$40.00
ASE Entry-Level - Collision: Structural Analysis and Damage	\$40.00			\$0.00	\$40.00
Autodesk Certified Professional - 3D Studio Max	\$210.00	\$1,380.00		\$0.00	\$1,590.00
Autodesk Certified Professional - Inventor	\$210.00	\$1,380.00		\$0.00	\$1,590.00
Autodesk Certified User - AutoCAD	\$180.00	\$1,380.00	3	\$420.22	\$1,980.22
Autodesk Certified User - Inventor	\$180.00	\$1,380.00	3	\$420.22	\$1,980.22
Autodesk Certified User -Revit Architecture	\$180.00	\$1,380.00	3	\$375.00	\$1,935.00
Certified Medical Administrative Assistant	\$117.00	**		\$0.00	\$117.00
Certified Nursing Assistant (CNA) ***	\$286.50			\$0.00	\$286.50
Certified Solidworks Associate (CSWA)	\$99.00	\$500.00	3	\$375.00	\$974.00
Chief Architect Certified Apprentice	\$195.00		3	\$420.22	\$615.22
Child Development Associate (CDA)	\$425.00		9	\$1,060.66	\$1,485.66
CIW Advanced HTML5 and CSS3 Specialist	\$150.00		3	\$420.22	\$570.22
CIW JavaScript Specialist	\$150.00		3	\$420.22	\$570.22
CIW Site Development Associate	\$150.00		3	\$420.22	\$570.22
Emergency Medical Responder - IEMSR	\$100.00	**		\$0.00	\$100.00
E.P.A - HVAC	\$25.25			\$0.00	\$25.25
FAA Ground School	\$39.95	\$295.00	3	\$0.00	\$334.95
Florida Automotive Dealer's Association	\$79.95			\$0.00	\$79.95
GIS Technician (Entry Level)	\$150.00	\$2,150.00		\$0.00	\$2,300.00
HVAC Employment Ready - Air Conditioning	\$24.95		4	\$500.00	\$524.95
HVAC Employment Ready - Electrical	\$24.95		4	\$500.00	\$524.95
HVAC Employment Ready - Heat Pump	\$24.95		4	\$500.00	\$524.95
Microsoft Office Master	\$360.00		3	\$420.22	\$780.22
Microsoft Office Specialist Bundle Certification (3 of 5)	\$360.00		3	\$420.22	\$780.22
MSSC Certified Production Technician	\$232.00	\$520.00	15	\$1,701.10	\$2,453.10
National ProStart Certificate of Achievement	\$36.00		3	\$420.22	\$456.22
NCCER Air Conditioning, Refrigeration and Heating ***	\$30.00		3	\$420.22	\$450.22
NOCTI - Clothing & Textiles Management & Production	\$33.00			\$0.00	\$33.00
NOCTI - Criminal Justice	\$20.00			\$0.00	\$20.00
PACT Building Construction Tech*** (Plus OSHA card)	\$35.00			\$0.00	\$35.00
ParaPro Assessment	\$55.00			\$0.00	\$55.00
QuickBooks Certified User	\$150.00		3	\$420.22	\$570.22
ServSafe Certified Professional Food Manager ***	\$188.95		3	\$420.22	\$609.17
Wastewater Treatment Plant Operator Level C	\$100.00	\$500.00		\$0.00	\$600.00
Water Treatment Plant Operator Level C	\$100.00	\$500.00		\$0.00	\$600.00

* College credit costs determined by \$106.74 per credit + \$100 for a textbook

** Requires 1 year of experience or complete the high school program

*** Must be taught in a certified program

Brevard Public Schools pays for current program enrolled students to take Industry Certifications. This amount reflects the outside testing entity charge for testing. The cost of assessment does not include retakes.