

BREVARD SCHOOLS **SCHOOL CHOICE**

INFORMATIONAL BOOKLET



BPS



TABLE OF CONTENTS

What is School Choice 01

Choice Schools 01

Education Location
Option (ELO) 02

Education Program
Opportunity (EPO) 02

Application Process 04

Choice Schools 04

Education Location
Option (ELO) 05

Education Program
Opportunity (EPO) 05

Renewals 05

Lottery Process 07

Additional Information 08

WHAT IS SCHOOL CHOICE?



Brevard Public Schools offers school choice options for parents to apply for when selecting the best educational path for their children:

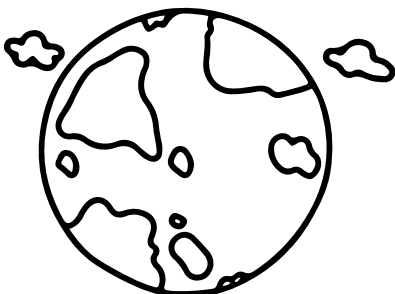
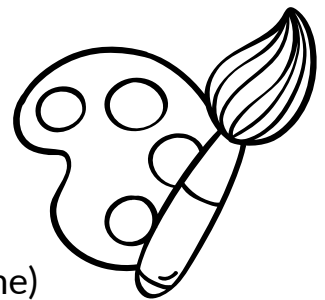
1. Choice Schools – Thematic, school-wide programs open to eligible students without residential boundaries.
 - a. This is a type of Education Program Opportunity.
2. Education Location Option (ELO) – Allows students to apply to attend a school outside their zoned area, focusing on location only.
3. Education Program Opportunity (EPO) – Provides opportunities to apply for schools offering specialized programs or themes of study, potentially outside the student's zoned school.

These options ensure families have the flexibility to choose the educational environment that best suits their child's needs. Below is more detailed information about each school choice option.

CHOICE SCHOOLS

A Choice School offers a thematic, school-wide program of study for eligible students without residential boundaries. Brevard Public Schools currently offers six Choice School opportunities:

- Primary Schools (K-6th grade):
 - Freedom 7 (Cocoa Beach)
 - South Lake (Titusville)
 - Stevenson (Merritt Island)
 - West Melbourne School of Science (West Melbourne)
- Secondary Schools (7th-12th grade):
 - Edgewood Jr./Sr. High School (Merritt Island)
 - West Shore Jr./Sr. High School (Melbourne)



EDUCATION LOCATION OPTION (ELO)

The ELO allows students to apply to attend a school outside of their zoned area, without focusing on a specific program of study. This option is for changing school location only.

For a list of Frozen schools (schools NOT available based on capacity for ELO) click [HERE](#).

EDUCATION PROGRAM OPPORTUNITY (EPO)

The EPO offers students the chance to apply for schools that provide specific thematic or program-based education, regardless of their zoned school.

EPO programs include:

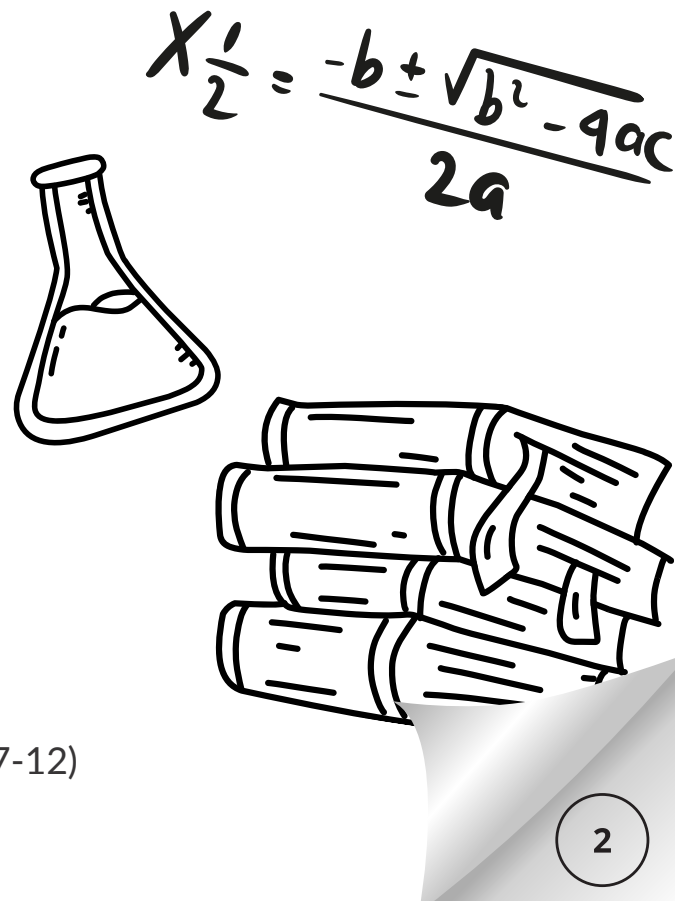
- Choice Schools
- Academic/International Programs
- Career and Technical Education (CTE) Programs
- Magnet Schools

Academic and International Programs

These programs allow students to choose a school based on specialized academic offerings, often referred to as International Programs, available at select schools.

List of Academic Programs and Participating Schools:

- **Cambridge (AICE):**
 - Grades 9th through 12th
 - Eau Gallie High School
 - Heritage High School
 - Rockledge High School
 - Titusville High School
 - Grades 7th through 8th
 - Jackson Middle School
 - Johnson Middle School
 - Kennedy Middle School
- **International Baccalaureate (IB):**
 - **Primary**
 - Freedom 7 Elementary (K-6)
 - **Secondary**
 - Cocoa Beach Jr./Sr. High School (7-12)
 - Melbourne High School (9-12)





Career and Technical Education Programs (CTE)

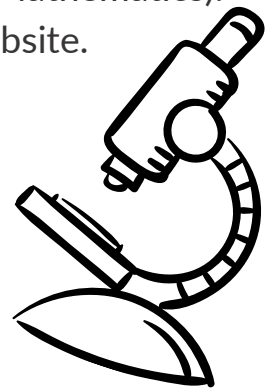
Please refer to the attached CTE [Matrix](#) for a full list of CTE programs and the schools where they are available. For additional information, you may contact the individual schools.

CTE enrollment is dependent upon space available. For a list of Frozen schools (schools NOT available based on capacity) click [HERE](#).

Magnet Schools

Brevard Public Schools has four magnet schools that offer STEAM-based education (Science, Technology, Engineering, Arts, and Mathematics). Detailed program information can be found on each school's website.

- Primary Grade Levels:
 - Golfview Elementary Magnet STEAM School (K-6)
- Secondary Grade Levels:
 - McNair Magnet Middle School (7-8)
 - Stone Magnet Middle School (7-8)
 - Palm Bay Magnet High School (9-12)

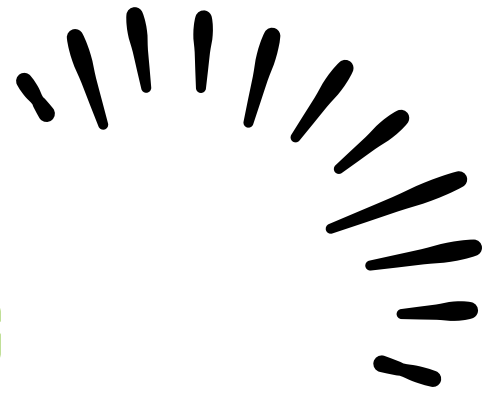


FURTHER DETAILS

- Students who do not renew their EPO applications but still plan to attend their current non-zoned school, will **NEED** to submit a **NEW** Education Location Option application and enter back into the lottery.
- If a student drops a program during the school year, they will need to **return** to their **ZONED** school as they are no longer attending the school on the program that placed them there.



APPLICATION PROCESS



CHOICE SCHOOLS

How To Apply:

- Application Window
 - Opens: November 15th at 8 AM.
 - Closes: December 13th at 5 PM.
- Applications are submitted through FOCUS.
- New families to Brevard Public Schools must register for a new FOCUS account before completing the application.
- All applications will be submitted to the Office of Curriculum and Instruction, where students will be entered into a lottery for the program and/or school.

- Choice Schools include:
 - Elementary: Freedom 7, South Lake, Stevenson, and West Melbourne School of Science
 - Secondary: Edgewood Jr./Sr. High School, and West Shore Jr./Sr. High School

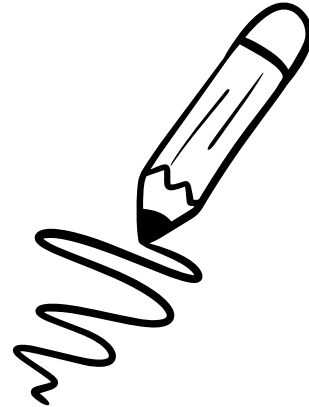
Application Requirements:

- **Elementary Choice Schools:**
 - Must be a current Florida resident and provide two proofs of residency (Tier 1 & Tier 2) uploaded into the FOCUS enrollment form.
 - A behavioral/academic contract (for both parent and student) is required upon entry. This will be completed during the application process via a series of "Agree" questions in FOCUS.
 - Families are required to complete 20 community service hours annually, if accepted.
- **Secondary Choice Schools:**
 - **BPS Students:**
 - The Choice School will review the applicant's current FAST PM3 data, historical FSA data (if applicable), and I-Ready data (for rising 7th graders) to verify on-grade-level performance.
 - No data upload is required for BPS students.
 - **Non-BPS Students:**
 - The Choice School will review historical data from a nationally normed test (a minimum score of the 45th percentile in ELA/Math composite is required). For example, the Iowa Basic Test of Skills (IBTS).
 - Parents/guardians must provide the school the last two years of nationally normed test results into their FOCUS account upon acceptance.

EDUCATION LOCATION OPTION (ELO)

How To Apply:

- Application Windows
 - Secondary (7-12)
 - Opens: January 17th at 8 AM
 - Closes: February 21st at 5PM
 - Elementary (K-6)
 - Open: April 4th at 8 AM
 - Closes: May 2nd at 5 PM
- Applications are submitted through FOCUS.
 - New families to Brevard Public Schools must register for a new FOCUS account before completing the application.
 - All applications will be submitted to the Office of Curriculum and Instruction, where students will be entered into a lottery for the program and/or school.



*Enrollment is dependent upon space available. For a list of Frozen schools (schools NOT available) click [HERE](#).

Application Requirements:

- Must be a current Florida Resident and upload 2 proofs of residency from Tier 1 and Tier 2 in FOCUS before submitting an application.
- A behavior/academic/attendance parent and student contract is required upon entry. This will be completed by the parent during the application process in a series of "Agree" questions through FOCUS.



EDUCATION PROGRAM OPPORTUNITY (EPO)

PRIOR TO SUBMISSION OF AN APPLICATION

It is important to review the school's application requirements (if applicable), specific terms and conditions, and the lottery process. The following links provide details about all aspects of the EPO process.

Academic and International Programs are not lottery based

How To Apply:

- Application Windows
 - Secondary (7-11)
 - Opens: January 17th at 8 AM
 - Closes: February 21st at 5PM
 - Elementary (K-6)
 - Open: April 4th at 8 AM
 - Closes: May 2nd at 5 PM
- Applications are submitted through FOCUS.
 - New families to Brevard Public Schools must register for a new FOCUS account before completing the application.
 - All applications will be submitted to the Office of Curriculum and Instruction, where students will be entered into a lottery system for the program and/or school.



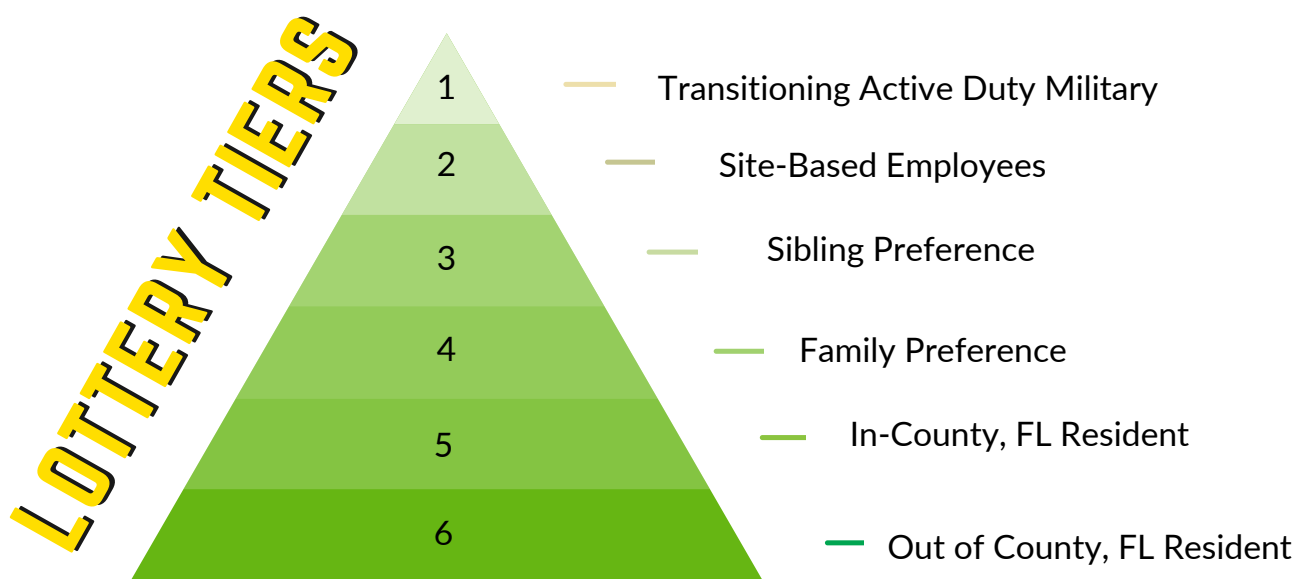
RENEWALS

- For ALL students **currently enrolled** under school choice (Choice Schools, EPO, or ELO):
 - Renewal applications will **OPEN November 15th**.
 - For best results complete renewals as soon as possible.
- Renewals will be submitted, via Focus. You can access your student's renewal form by logging into your Focus account.
 - If you are having trouble logging in, please contact your student's school.

WHAT IS THE LOTTERY PROCESS?

All new applications are placed in our lottery (excluding Cambridge and IB programs)

This includes our School Choice, ELO, and EPO applications submitted in the appropriate windows for the upcoming school year. During the lottery window, applications are placed into a specific tier, and the lottery is run on the published dates. You can find the 2024-25 application windows and lottery dates under [timelines](#).



Only applications that are submitted before the lottery will be placed in these tiers.

LOTTERY TIER DEFINITIONS

1. Site Based Employees: For employees who wish to apply for their student to attend the same school they currently work at.
2. Sibling Preference: For families with a sibling applying to attend the same school as their sibling(s). Siblings must start the school year at the school for which the family is applying.
3. Family Preference: For families who submit **NEW** applications for more than one student to the same school; with one of those students receiving an accepted seat offer. Once accepted the other sibling(s) will move into this tier to attempt to keep them together at the same school.
4. In County Florida Resident: A tier for Florida residents who currently live in Brevard County.
5. Out of Country Florida Resident: A tier for Florida residents who currently live outside of Brevard County.

ADDITIONAL INFORMATION



- For a full list of terms, definitions, and application conditions, please click [here](#).
 - Any applications submitted during the waitlist timeline do not receive tier preferences.
- There is no application fee for Brevard School Choice Applications.

SCHOOL CHOICE TIMELINES

For a full list of dates for application openings, closures, and waitlist schedules, please click [here](#).

QUESTIONS?

Contact:

School Choice & Special Programs - Curriculum & Instruction
2700 Judge Fran Jamieson Way
Viera, FL 32940
(321) 633-1000 ext. 11395

