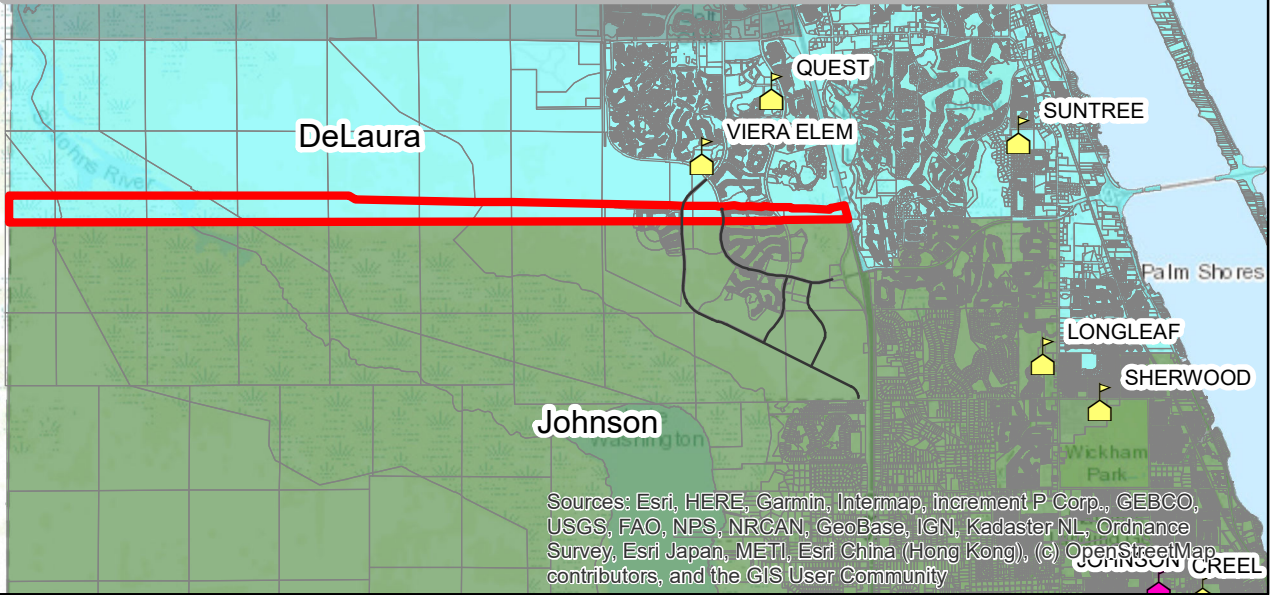
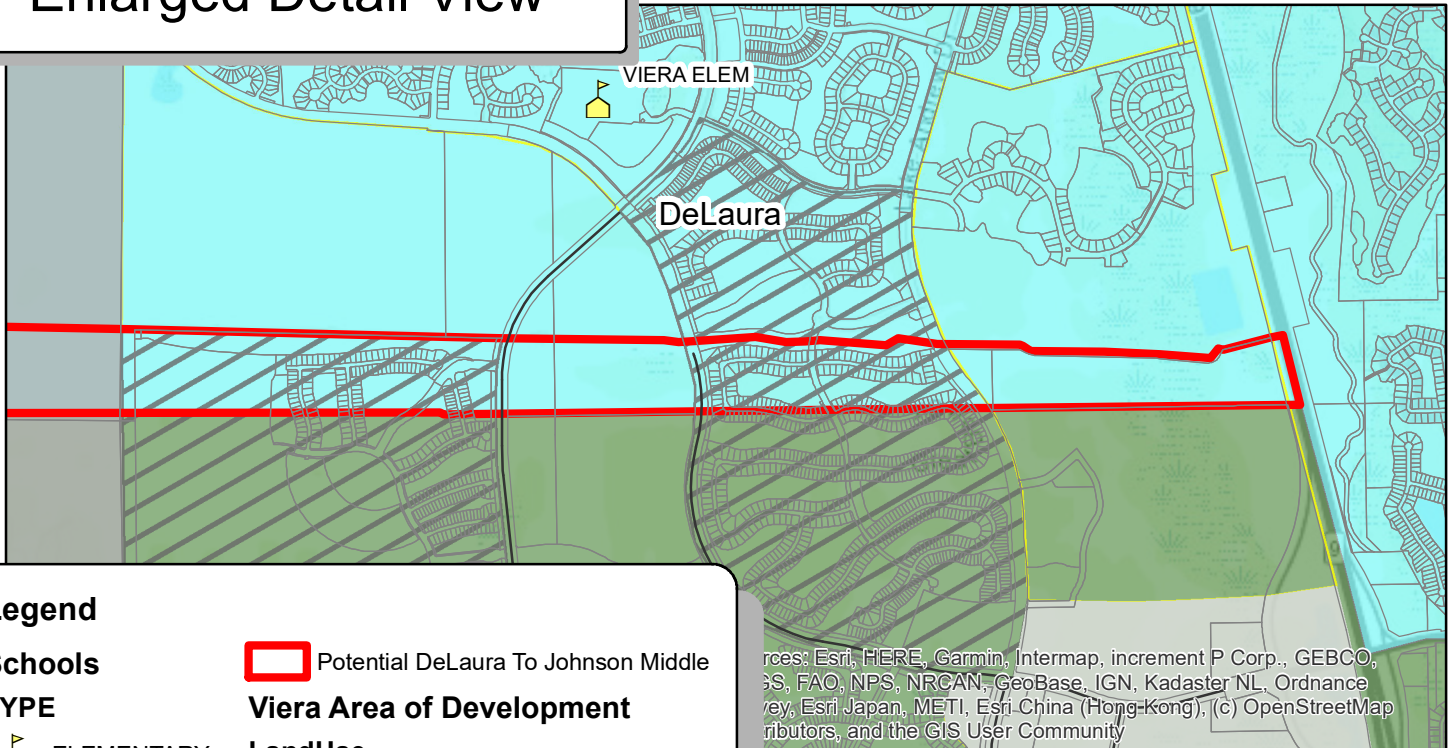


DeLaura Middle to Johnson Middle School Potential Attendance Boundary Change for SY2023-24









Enlarged Detail View



Legend


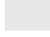




Schools TYPE

-  ELEMENTARY
-  HIGH
-  JR/SR HIGH
-  MIDDLE
-  Future Roadways

 Potential DeLaura To Johnson Middle

Viera Area of Development

LandUse

-  55 and Older
-  Interchange District
-  Mixed Use
-  Rural Preserve Area
-  Viera Wilderness Park 1
-  Viera Wilderness Park 2

Facility Services
Planning & Project Management
Attendance Boundary Team
August 21, 2022