

2015 - 2016

Student Accommodation Plan



Prepared by Facilities Services / David Lindemann
Board Approved April 28, 2015



School Board Members

DISTRICT 1

Ms. Misty Belford

DISTRICT 2

Mr. John Craig

DISTRICT 3

Ms. Amy Kneessy

DISTRICT 4

Ms. Karen Henderson

DISTRICT 5

Mr. Andy Ziegler

SUPERINTENDENT OF SCHOOLS

Brian T. Binggeli, Ed. D.

**2700 Judge Fran Jamieson Way
Viera, Florida 32940
Phone (321) 633-1000**

School Board of Brevard County

FY 2015-2016 Student Accommodation Plan



TABLE OF CONTENTS	PAGE NO.
SECTION 1 OVERVIEW	1
A. Summary	3
B. Strategic Plan Relationship	5
SECTION 2 BALANCING ENROLLMENT TO CAPACITY	7
A. Out-of-Area Restrictions	9-11
B. The Requirement to Balance Enrollment to Capacity	13-14
C. Options to Balance Enrollment to Capacity	15-17
D. Policy 7110 – Student Accommodation	19-20
E. Policy 7120 – Criteria for Balancing School Membership	21-25
SECTION 3 CAPACITY/ENROLLMENT ANALYSIS-2014-2015	27
A. By Area	29-32
B. By School Type	33-35
SECTION 4 CAPACITY/ENROLLMENT PROJECTIONS-2015-2016	37
A. By Area	39-42
B. By School Type	43-45
SECTION 5 CAPACITY/ENROLLMENT PROJECTIONS-2015-16 TO 2019-20	47
A. By Area	49-52
B. By School Type	53-55
SECTION 6 RELOCATABLE CLASSROOM CHANGES-2015-2016	57
A. By Area	59-62
B. By School Type	63-65
C. Relocatable Inventory 2014-2015	67-68
SECTION 7 STUDENT ENROLLMENT DATA	69
A. Brevard Public Schools Feeder System	
1. 2014-2015 Feeder System	71
2. 2015-2016 Feeder System	72
B. Membership 1955-2014/Projection 2015-2023 (Chart)	73
C. Actual/Projection Support Data	75-80
SECTION 8 FACILITIES PLANNING	81-86



Section 1

Overview

- A. Summary
- B. Strategic Plan Relationship



Summary

The Student Accommodation Plan is prepared by the Facility Services Department every spring and approved by the School Board prior to the summer break. The School Board of Brevard County has adopted this document, which compares projected student enrollment to projected school capacities, as a planning tool for the next school year. After the Plan is approved, it is implemented throughout the district.

- ☐ The information compiled in this document comes from several different sources. Financial Services and Facilities Services worked together this year to provide the projected student enrollment for the School District. Facilities Services provides the school capacities, permanent and relocatable, from the Florida Inventory of School Houses (FISH) Database. School Principals and Area Superintendents estimate their need for space to accommodate students based on the school programs and student enrollment projections. After the Senior Staff evaluates the information, recommendations are provided to the Superintendent and to the School Board for approval.
- ☐ This Plan assumes the continued use of relocatable classroom space. If the Plan is implemented, the School District will increase the number of relocatable classroom units from 220 during the 2014-2015 to 225 for the 2015-16 school year by moving 5 relocatable units from other locations and converting from surplus to classroom use.
- ☐ Schools have a usable life span of 50 years or more. During that time, student populations shift as new students move into new developments and current students matriculate and leave existing neighborhoods. These demographic shifts cause some schools to exceed their capacity while leaving other schools under-utilized. The District has several options available to balance student populations and more efficiently utilize the existing schools. One of the least disruptive options is to build new capacity, but with available permanent capacity for more than 10,000 additional students throughout the District, the Florida Department of Education may not approve the use of State funds for additional capacity. It is, therefore, assumed that other options such as “freezing” schools to out-of-area students, capping schools or special programs and changing attendance boundaries will be used to balance student enrollment to school capacity.
- ☐ School capacities contained in this Student Accommodation Plan are based on the FISH database as of January 22, 2015.



Strategic Plan Relationship

The Student Accommodation Plan supports two Outcome Indicators in the 2013-18 BPS Strategic Plan.

☐ Goal 2: Safe, Healthy, and Productive Learning and Work

Operational Expectations – Provide adequate and appropriate facilities

- Outcome Indicator 2.1.1 – Maintain a maximum permanent capacity utilization of 110% and a maximum total capacity utilization of 100% in every school by the 2015-16 school year using relocatable capacity, membership redistricting, program modifications and new capacity

For the 2015-16 School Year, all Brevard District Schools are projected to be in compliance with Outcome Indicator 2.1.1.

☐ Goal 4: Fiscal Responsibility and Organizational Effectiveness

Operational Expectations – Maintain effective and efficient resource management

- Outcome Indicator 4.1.3 – Maintain total capacity utilization for the district between 80% and 90%

For the 2015-16 School Year, the Brevard Public School District is projected to be in compliance with Outcome Indicator 4.1.2.



Section 2

Balancing Enrollment to Capacity

- A. Out-of-Area Restrictions**
- B. The Requirement to Balance Enrollment to Capacity**
- C. Options to Balance Enrollment to Capacity**
- D. Policy 7110 – Student Accommodation**
- E. Policy 7120 – Criteria for Balancing School Membership**



Out-of-Area Restrictions

Incoming Out-of-Area

Policy 7120: *“No new incoming out-of-area requests will be approved for schools where student enrollment is projected to be greater than 90% of permanent capacity.”* Under this policy and at the discretion of the Director of School Choice, the schools below are entirely or selectively “frozen” to **incoming** students for School Year 2015-2016. Students with program needs related to District Choice Programs such as the International Baccalaureate, Cambridge or Career & Technical Education programs may be admitted to schools that are otherwise frozen but still projected to be at less than 100% of their permanent capacity.

Note that exceptions may be granted under Policy 7120 for students living in the district of one school that is closed to out-of-area incoming transfers who wish to attend another school that is also closed to out-of-area incoming transfers. *“Special consideration will be given to students who are requesting to move from a school of higher capacity utilization to one of lower capacity utilization within this category.”*

South Area	Central	North
Roy Allen Indialantic ① Jupiter ① McAuliffe Meadowlane Intermediate ① Melbourne Palm Bay Elementary ① Port Malabar Riviera ① Sunrise Turner University Park Westside	Cambridge Croton Cocoa ② (7 th & 8 th grade only) Endeavor Fairglen Golfview Manatee Ocean Breeze ① Satellite Suntree Surfside Viera	Coquina Cocoa Beach Jr/Sr ② (7 th & 8 th grade only) Imperial Estates Oak Park
<p>Notes:</p> <p>① Over 100% capacity utilization – Out of Area is open to students of school-based employees only.</p> <p>② Policy Exception at the Area Superintendents’ request.</p>		

Outgoing Out-of-Area

Policy 7120: *“No new outgoing Out-of-Area requests will be approved for schools where student enrollment is projected to be less than 75% of permanent capacity.”* Under this policy and at the discretion of the Director of School Choice, the schools below are “frozen” to **outgoing** students for School Year 2015-2016.

Note that exceptions may be granted under Policy 7120 for students in the district of one school that is closed to out-of-area outgoing transfers who wish to attend another school that is also closed to out-of-area outgoing transfers. *“Special consideration will be given to students who are requesting to move from a school of higher capacity utilization to one of lower capacity utilization within this category.”*

South	Central	North
Gemini Bayside Palm Bay High	Holland	Astronaut ② Cape View Jefferson Madison MILA Roosevelt Space Coast ② (9 th -12 th Only) Titusville
<p>Notes:</p> <p>② Policy Exception at the Area Superintendents' request.</p>		

Non-Renewal of Out-of-Area

Policy 7120: *“If a school’s enrollment is projected to exceed 100% of its permanent capacity for the following school year, existing out-of-area students will not be renewed as necessary to reduce the projected enrollment to 100% of the school’s permanent capacity. Non-renewals of existing out-of-area students will be prioritized by grade level beginning with the lowest grade levels.”* Under this policy, out-of-area students at the schools below **WILL NOT BE RENEWED** for School Year 2015-2016, beginning with the lowest grade level until the projected utilization is 100% of permanent capacity.

Note that students of school based employees attending all schools below are exempt from this provision.

South	Central	North
Indialantic ③ Jupiter ③ Meadowlane Intermediate ③ Palm Bay Elementary ③ Riviera ③	Ocean Breeze③	
<p><u>Notes:</u></p> <p>③ Students of School Based employees attending all schools above are exempt from this provision.</p> <p>Additional Note: Parents cannot “Out of Area” to a Choice School or Magnet School. Admittance to Choice or Magnet Schools is through the online application process only.</p>		

Source: Out-of-Area Restrictions Updated 1/27/2015



Balancing Enrollment to Capacity

The Requirement to Balance Enrollment to Capacity

The Growth Management Legislation enacted in 2005 required all local governments to implement School Concurrency by 2008. Based on this legislation and previous agreements, Brevard School Board and 15 local governments in Brevard County entered into the Interlocal Agreement for Public School Facility Planning and School Concurrency in June 2008. School Concurrency states that school capacity must be available in order for new residential development to be approved. During the 2011 legislative session, the growth management statutes were revised to require relocatable classroom capacity when determining school concurrency.

The Interlocal Agreement for Public School Facility Planning and School Concurrency between the School Board and 15 local governments was updated in 2014 to reflect changes in state legislation and to streamline the school concurrency process. The communities in Brevard continue to implement the school concurrency process to ensure adequate school facilities for the youth in Brevard County.

One of the provisions of the Interlocal Agreement is to ensure that schools have sufficient capacity to support projected student growth. The current agreement establishes a 100% Level of Service (LOS) for school concurrency using both permanent and relocatable capacity. In order to meet that standard, the School Board has completed the activities listed in the following paragraphs.

For the 2011-12 school year, no attendance boundaries were changed. Students were accommodated with a net decrease of 7 relocatable classrooms.

For the 2012-13 school year, attendance boundaries were changed at five high schools, one junior/senior high school, six middle schools and eight elementary schools to address projected over-capacity situations at one high school, one junior/senior high school, three middle schools and three elementary schools. In addition, one elementary school was closed and the attendance boundaries at seven elementary schools were changed to address projected under-utilization at those schools. Students were accommodated with a net increase of 13 relocatable classrooms.

For the 2013-14 school year, two elementary schools and one middle school were closed. The middle school, Clearlake, was integrated with the nearby high school Cocoa High to create a new Junior/Senior High School. To make this change, the attendance boundaries at both Cocoa and Rockledge high schools, and at McNair Middle school had to be adjusted so that the middle

and high school boundaries would be coincident. The boundaries of eight elementary schools were also changed to accommodate the students affected by the two closed elementary schools. Students were accommodated with a net decrease of 35 relocatable classrooms.

For the 2014-15 school year, no attendance boundaries were changed. A net increase of 10 relocatable classroom units were provided to accommodate the students.

For the 2015-16 school year, no attendance boundary changes are proposed. A net increase of 5 relocatable classrooms will be provided to accommodate the projected students and program needs.

School Board of Brevard County

FY 2015-2016 Student Accommodation Plan



Options for Balancing Enrollment to Capacity

The options available to the School Board to balance a school's student enrollment to its capacity vary in cost and disruption. The options, in increasing order of potential student disruption, are:

1. Construct new capacity.
2. Add relocatable classroom buildings.
3. "Freeze" schools to out-of-area students.
4. Cap, modify, transfer or eliminate Choice / Special programs.
5. Cap enrollment at permanent capacity and bus new students to schools that have available capacity. (Cap and Bus)
6. Change school attendance boundaries. (Redistricting)
7. Multi-track, year-round school operations.
8. Split sessions (one group of students using a facility in the morning and another group using the same facility in the afternoon/early evening).
9. Close under-capacity schools to better utilize facilities and resources.

1. Construct New Capacity

Adding new capacity is typically the most expensive but least disruptive option. All other options can be implemented solely at the discretion of the School Board, but constructing new capacity requires approval of the Florida Department of Education (FDOE) if state funds are to be used. Because Brevard County has more existing capacity than projected enrollment for the next five years, FDOE approval of additional capacity will likely be denied or, at best, limited to small additions in special situations (e.g., isolated geographic areas). Construction of new capacity with locally generated funds (impact fees, sales tax, etc.) does not require FDOE approval.

2. Add Relocatable Classrooms

The District owns 297 relocatable buildings that are currently suitable for classroom use. These classrooms can be used to mitigate temporary capacity issues and to provide the additional capacity that some special programs require.

3. "Freeze" Schools to Out-Of-Area Students

Policy 7120 freezes schools that are over 90% of their permanent capacity to incoming students and under 75% of their permanent capacity to outgoing students. Additionally, schools are frozen when it is in the best interest of the School District due to unusual circumstances.

School Board of Brevard County

FY 2015-2016 Student Accommodation Plan

4. Cap, Modify, Transfer or Eliminate Choice / Special Programs

Policy 7120 caps enrollment in choice and special programs to the permanent capacity of the school. The programs can be capped or modified to fit within the capacity of the school, or they may be transferred to a school with capacity or eliminated, subject to federal or state guidelines.

5. Cap Enrollment at Permanent Capacity and Bus New Students to Schools That Have Available Capacity (“Cap and Bus”)

This option is sometimes used when an over-capacity situation is believed to be temporary in nature (a new school is under construction, projected declining enrollment at an over capacity school, etc.) or when none of the less disruptive options are feasible.

6. Change School Attendance Boundaries - Redistricting

Redistricting is the process of changing the attendance boundary of a school to move students from an over-crowded school to adjacent schools that have fewer students than capacity. It is typically one of the most challenging responsibilities of a School Board.

Standard “Hard” Redistricting

Traditionally, the School District has used “hard” redistricting to establish an attendance boundary for a new school or to change an attendance boundary for a school that is over capacity. Students within the redistricted area must attend a different school the following year. Typically, rising sixth, eighth, eleventh and twelfth graders are “grandfathered,” allowing them to complete their education at their current school.

“Soft” Redistricting

Under “soft” redistricting, all current students living within the redistricted area are “grandfathered” at their current school until graduation. Siblings of current students attending the school are also allowed to attend that school. New students entering the school or moving into the redistricted area are required to attend the new school. While this process is less disruptive than hard redistricting, it lengthens the redistricting process by up to six years and increases transportation costs.

7. Multi-Track Year-Round School Operations

When multi-track year-round school scheduling is implemented, it increases the effective capacity of a school by 33% because the school will be in use during the summer months. Because of difficulties coordinating family activities like vacations, this option has not been popular.

8. Split Sessions

This option involves splitting the student body into two groups. One group attends school from early in the morning to about noon. The other group attends from noon to late in the afternoon. While this option effectively doubles a schools capacity, there is less time for each group than there would be otherwise. This measure is considered to be the most disruptive means of solving over-capacity issues when space is limited and is used only when no other option is feasible.

School Board of Brevard County

FY 2015-2016 Student Accommodation Plan

9. School Closing

If a group of schools are under-utilized in an area of projected stable or declining enrollment, the School Board may choose to close one or more of those schools if the adjacent schools have sufficient capacity to serve the students from the closed school(s). The more efficient utilization of the remaining schools saves resources that can be better spent on the students' education rather than on keeping several partly-used schools open. The additional enrollment in the remaining schools can provide more programs and other educational opportunities for students than existed in the existing schools with smaller enrollments.

School Board of Brevard County

FY 2015-2016 Student Accommodation Plan



Policy 7110

Student Accommodation

The Board recognizes the need to define the criteria for implementation of strategies for student housing when student enrollment exceeds the design capacity of a school or falls below a minimum acceptable threshold.

Definitions

For purposes of this policy, the following definitions apply:

A. Capacity

1. **Design Capacity:** The maximum number of students designed to be housed at the school based on the satisfactory factored permanent capacity, scheduled on a traditional calendar, contained in the Florida Inventory of School Houses (FISH) database at the time of the Full-Time Equivalent (FTE) survey in October of the current school year.
2. **Total Capacity:** The maximum number of students designed to be housed at the school based on the satisfactory factored permanent and relocatable capacity, scheduled on a traditional calendar, contained in the Florida Inventory of School Houses (FISH) database at the time of the Full-Time Equivalent (FTE) survey in October of the current school year.

B. Student Enrollment

The number of students enrolled at the school during the Full-Time Equivalent (FTE) survey in October of the current school year.

Strategies

- A. If student enrollment is projected to be greater than ninety percent (90%) of design capacity, the following individual strategies or a combination of strategies may be used:
 1. "Freeze" the school to incoming out-of-area students (see Policy [7120](#) for exceptions).

School Board of Brevard County

FY 2015-2016 Student Accommodation Plan

2. Program offerings at the school may be modified, transferred to a school with available design capacity, or eliminated.
- B. If student enrollment is projected to be greater than 100% of design capacity, the following individual strategies or a combination of strategies may be used to adequately accommodate the students:
1. Provide relocatable classrooms.
 2. "Freeze" the school to all out-of-area students except for students of employees based at the school (Policy [7120](#)).
 3. Modify, transfer, or eliminate existing program offerings at the school.
 4. "Cap" student enrollment at the school and bus all new students to adjacent schools with available design capacity.
 5. Create new attendance boundaries to redistribute students to schools with available design capacity.
 6. Construct new capacity.
- C. The Board does not consider year round schedules as an appropriate strategy to address school capacity issues. Double session schedules may be used as a strategy on a temporary basis while new capacity is being constructed.
- D. Schools may be considered for closure for reasons of efficiency or financial necessity.

Implementation Flexibility

The Superintendent shall develop administrative procedures to implement this policy. The Board provides to the Superintendent flexibility in the implementation of this policy and the administrative procedures due to extenuating circumstances, subject to Board approval. The Board expects recommendations relative to this policy to be brought forward on an annual basis as a part of a student accommodation plan for the next school year.

F.S. 1001.41, 1013.37, 1013.45

Revised 7/15/03

Revised 4/12/05

Revised 4/22/08

Revised 4/8/14

School Board of Brevard County

FY 2015-2016 Student Accommodation Plan



Policy 7120

Criteria for Balancing School Membership to Capacity

The Board recognizes the need to define criteria for the implementation of strategies to meet the Level of Service requirements established by the Board and contained in the Interlocal Agreement for Public School Facility Planning and School Concurrency.

Definitions

For purposes of this policy, the following definitions apply:

A. Capacity

The capacity of a school shall be 100% of the permanent satisfactory factored FISH (Florida Inventory of School Houses) capacity on the date of the fall FTE count.

B. Current Students

All students attending a school at the end of the school year prior to redistricting.

C. Enclave

A portion of a school's attendance boundary that is separate from the boundary within which the school is located.

D. Fall FTE Count

The Fall Full Time Equivalent (FTE) student count is conducted each October. It is the official count of the number of students in each school for that school year.

E. Out-of-Area

A school other than the school serving the parent's residence.

F. Projected Enrollment

The official projection of the number of students in each school for the next five (5) school years is published each December.

School Board of Brevard County

FY 2015-2016 Student Accommodation Plan

G. Prospective Students

All students living in the redistricted boundary area that will be "new" to the school.

Clarifications:

1. All incoming Kindergarten students at an elementary school, all incoming 7th grade students at a middle school or junior/senior high school and all incoming 9th grade students at a high school are prospective students.
2. All students moving into the redistricted boundary area are prospective students, regardless of the grade level.

H. Redistricted Boundary Area

That portion of a school attendance area that is assigned (redistricted) to another school attendance area.

I. School-Based Employees

School District employees working at a school are considered to be school-based employees of that school.

J. Schools of Choice

There are five (5) Schools of Choice: Freedom 7 Elementary School; Robert Louis Stevenson Elementary School; West Melbourne Elementary School; Edgewood Jr./Sr. High School; and West Shore Jr./Sr. High School. Siblings of current students at these schools have preference.

K. Sibling

Family members of a current student residing in the same residence as the current student who begin their attendance at a school during a year in which the current student is attending the school. Siblings who do not begin their attendance at the school while the current student is attending the school do not qualify for sibling preference.

L. "Soft" Redistricting

An alternative to standard redistricting that recognizes the vested interest of students and parents in the schools they have been attending. The purpose of soft redistricting is to move prospective students scheduled to attend a school where student enrollment exceeds permanent capacity to a neighboring school with available capacity.

M. Travel Time

The average one (1) way commute time on as school bus.

School Board of Brevard County

FY 2015-2016 Student Accommodation Plan

Criteria for All Redistricting

- A. Busing - Travel time from the redistricted boundary area to the new school should not exceed forty-five (45) minutes. This criterion does not apply for students who attend a School of Choice or an Exceptional Education Program.
- B. Enclaves - Redistricting should not create isolated areas of students (enclaves). Where possible, redistricting should eliminate existing enclaves.
- C. Year-Round Schools - Students shall not be redistricted to Year-Round Schools.
- D. Socio-Economic Status - Redistricting should be accomplished with diversity as a consideration.

Specific Criteria for "Soft" Redistricting

- A. Prospective Students - Prospective students living in or moving into the redistricted boundary area shall be required to attend the "new" school.
- B. Current Students - Current students who live in the redistricted boundary area may attend the "new" school or remain in their current school until graduation.
- C. Siblings - Siblings of current students who live in the redistricted boundary area may attend the "new" school or remain in their current school until graduation of the youngest current student.
- D. Exceptions - Students may attend other schools as described in Out-of-Area, Employee Preference, and Special Schools and Programs.

Specific Criteria for "Hard" Standard Redistricting

- A. All students living in or moving into the redistricted boundary area shall be required to attend the "new" school.
- B. Exceptions - Students may attend other schools as described in Out-of-Area, Employee Preference, and Special Schools and Programs sections.

School Board of Brevard County

FY 2015-2016 Student Accommodation Plan

Criteria for Out-of-Area Approvals

- A. Students currently approved to attend a school outside of their normal attendance boundary who continue to meet the contract requirements for out-of-area assignment must reapply for approval each year to stay in the school they now attend unless they choose to return to their home school. Refer to Policy [5120](#) for contract requirements.
- B. If a school's enrollment is projected to exceed 100% of its permanent capacity for the following school year, existing out-of-area students will not be renewed as necessary to reduce the projected enrollment to 100% of the school's permanent capacity. Non-renewals of existing out-of-area students will be prioritized by grade level beginning with the lowest grade levels, for all out-of-area students in that grade level. Students of school-based employees are exempt from this provision.
- C. No new incoming out-of-area requests will be approved for schools where student enrollment is projected to be greater than ninety percent (90%) of permanent capacity for the following school year. Special consideration will be given to students who are requesting to move from a school of higher capacity utilization to one of lower capacity utilization within this category.
- D. No new outgoing out-of-area requests will be approved for schools where student enrollment is projected to be less than seventy-five percent (75%) of permanent capacity for the following school year. Special consideration will be given to students who are requesting to move from a school of higher capacity utilization to one of lower capacity utilization within this category. Schools with year-round schedules are exempt from this criterion.
- E. If attendance boundary changes are necessary to address capacity issues at a school, existing out-of-area students at that school will not be renewed to reduce or eliminate the need to change the school's attendance boundaries. Students of school-based employees are exempt from this provision.
- F. The Director of School Choice may "freeze" a school to new incoming and/or outgoing out-of-area requests, regardless of the projected student enrollment to permanent capacity ratio, if the Director determines that this restriction is in the best interest of the School District.
- G. There is no sibling preference for out-of-area students.
- H. Refer to Policy [5120](#) for the Out-of-Area appeal process.

School Board of Brevard County

FY 2015-2016 Student Accommodation Plan

Criteria for Employee Preference

- A. Children of School District employees may attend any school, with the exception of the Schools of Choice, as an out-of-area student if the child meets the entry requirements and the projected enrollment for the following school year does not exceed the school's permanent capacity. The capacity restriction does not apply to school-based employees.

- B. Only children of school-based employees working at the Schools of Choice may attend these schools via employee preference if the child meets the entry requirements.

Criteria for Special Schools and Programs

- A. Enrollment at magnet schools, Schools of Choice, and District-approved Choice Programs (including CTE Choice Programs) shall be limited to 100% of the projected permanent capacity of the school for the following school year.

- B. Students enrolled in special programs (i.e., Exceptional Education, Teen Age Parent, and Alternative Learning) shall be assigned to the school closest to their home with capacity offering the special program(s).

- C. New McKay Scholarship students may be approved at the requested school(s) if:
 - 1. student enrollment is projected to be no more than ninety percent (90%) of the permanent capacity of the school for the following school year; and
 - 2. the student's Individual Education Plan (IEP) can be implemented at the school; and
 - 3. the personnel allocation plan can be implemented for the student's matrix level; and
 - 4. the school has no more than twenty-two percent (22%) ESE students (excluding gifted).

Implementation Flexibility

The Board provides to the Superintendent flexibility in the implementation of this policy due to extenuating circumstances. The Superintendent shall notify the Board of any exceptions.

F.S. 163.3180, 1001.41, 1001.42

Adopted 3/25/08

Revised 4/09

Revised 6/24/10

Revised 6/14/11



Section 3

Capacity / Enrollment Analysis 2014 - 2015

- A. By Area
- B. By School Type



2014-15 School Year

School Capacity and Student Enrollment Analysis by Area

School Information				Student	Permanent			2014-2015 Relocatables			Total		
School	Type	Grades	Utilization Factor (Note 1)	Membership (Note 2)	2014-15 Student Stations (Note 3)	Factored Capacity (Note 4)	Capacity In Use (Note 5)	Classroom Units (Note 6)	Student Stations (Note 7)	Factored Capacity (Note 8)	Total Student Stations (Note 9)	Total Factored Capacity (Note 9)	Total Capacity In Use (Note 9)
South Area													
Allen	Elementary	PK-6	100%	623	645	645	97%	4	84	84	729	729	86%
Columbia	Elementary	PK-6	100%	570	685	685	83%	3	66	66	751	751	76%
Discovery	Elementary	PK-6	100%	709	826	826	86%	7	154	154	980	980	72%
Gemini	Elementary	K-6	100%	503	667	667	75%	2	44	44	711	711	71%
Harbor City	Elementary	K-6	100%	400	453	453	88%	8	176	176	629	629	64%
Indialantic	Elementary	K-6	100%	762	754	754	101%	2	44	44	798	798	96%
Jupiter	Elementary	PK-6	100%	844	780	780	108%	7	150	150	930	930	91%
Lockmar	Elementary	K-6	100%	786	892	892	88%				892	892	88%
McAuliffe	Elementary	PK-6	100%	741	754	754	98%	8	164	164	918	918	81%
Meadowlane Intermediate	Elementary	3-6	100%	929	894	894	104%	11	220	220	1,114	1,114	83%
Meadowlane Primary	Elementary	K-2	100%	780	824	824	95%				824	824	95%
Palm Bay	Elementary	PK-6	100%	859	829	829	104%	8	176	176	1,005	1,005	86%
Port Malabar	Elementary	K-6	100%	772	768	768	101%	4	84	84	852	852	91%
Riviera	Elementary	PK-6	100%	715	689	689	104%	4	88	88	777	777	92%
Sunrise	Elementary	PK-6	100%	846	895	895	95%				895	895	95%
Turner	Elementary	PK-6	100%	760	830	830	92%	2	44	44	874	874	87%
University Park	Elementary	PK-6	100%	634	679	679	93%	6	132	132	811	811	78%
West Melbourne	Elementary	K-6	100%	547	618	618	89%				618	618	89%
Westside	Elementary	K-6	100%	769	835	835	92%	1	22	22	857	857	90%
Central	Middle	7-8	90%	1,237	1,694	1,525	81%				1,694	1,525	81%
Hoover	Middle	7-8	90%	564	732	659	86%				732	659	86%
Southwest	Middle	7-8	90%	905	1,308	1,177	77%				1,308	1,177	77%
Stone	Middle	7-8	90%	784	1,126	1,013	77%				1,126	1,013	77%
West Shore	Jr / Sr High	7-12	90%	957	1,232	1,109	86%	7	172	155	1,404	1,264	76%
Bayside	High	9-12	95%	1,643	2,353	2,235	74%				2,353	2,235	74%
Heritage	High	9-11	95%	1,825	2,436	2,314	79%				2,436	2,314	79%
Melbourne	High	9-12	95%	2,131	2,439	2,317	92%				2,439	2,317	92%
Palm Bay	High	PK, 9-12	95%	1,599	2,576	2,447	65%	7	175	166	2,751	2,613	61%
Totals: South Area				25,194	30,213	29,113	87%	91	1,995	1,969	32,208	31,082	81%

South Area Group Totals	Elementary	13,549	14,317	14,317	95%	77	1,648	1,648	15,965	15,965	85%
	Middle	3,490	4,860	4,374	80%	-	-	-	4,860	4,374	80%
	Jr/Sr High	957	1,232	1,109	86%	7	172	155	1,404	1,264	76%
	High	7,198	9,804	9,313	77%	7	175	166	9,979	9,479	76%



2014-15 School Year

School Capacity and Student Enrollment Analysis by Area

School Information				Student	Permanent			2014-2015 Relocatables			Total		
School	Type	Grades	Utilization Factor (Note 1)	Membership (Note 2)	2014-15 Student Stations (Note 3)	Factored Capacity (Note 4)	Capacity In Use (Note 5)	Classroom Units (Note 6)	Student Stations (Note 7)	Factored Capacity (Note 8)	Total Student Stations (Note 9)	Total Factored Capacity (Note 9)	Total Capacity In Use (Note 9)
Central Area													
Andersen	Elementary	K-6	100%	714	840	840	85%	2	44	44	884	884	81%
Cambridge	Elementary	PK-6	100%	637	649	649	98%	6	116	116	765	765	83%
Creel	Elementary	PK-6	100%	972	1,088	1,088	89%	3	66	66	1,154	1,154	84%
Croton	Elementary	PK-6	100%	653	707	707	92%	4	88	88	795	795	82%
Endeavour	Elementary	PK-6	100%	808	852	852	95%	7	138	138	990	990	82%
Fairglen	Elementary	PK-6	100%	689	753	753	92%				753	753	92%
Golfview	Elementary	PK-6	100%	675	689	689	98%	4	88	88	777	777	87%
Holland	Elementary	K-6	100%	427	605	605	71%				605	605	71%
Longleaf	Elementary	PK-6	100%	599	790	790	76%				790	790	76%
Manatee	Elementary	PK-6	100%	836	866	866	97%	7	132	132	998	998	84%
Ocean Breeze	Elementary	K-6	100%	510	498	498	102%	8	156	156	654	654	78%
Quest	Elementary	K-6	100%	774	928	928	83%	2			928	928	83%
Sabal	Elementary	PK-6	100%	585	679	679	86%	5	106	106	785	785	75%
Saturn	Elementary	PK-6	100%	748	830	830	90%	6	128	128	958	958	78%
Sea Park	Elementary	PK-6	100%	343	439	439	78%				439	439	78%
Sherwood	Elementary	PK-6	100%	544	609	609	89%				609	609	89%
Suntree	Elementary	K-6	100%	629	689	689	91%	3	66	66	755	755	83%
Surfside	Elementary	K-6	100%	418	439	439	95%	2	40	40	479	479	87%
Williams	Elementary	K-6	100%	538	627	627	86%	4	88	88	715	715	75%
DeLaura	Middle	7-8	90%	699	1,026	923	76%				1,026	923	76%
Johnson	Middle	7-8	90%	787	1,111	1,000	79%	1	22	20	1,133	1,020	77%
Kennedy	Middle	7-8	90%	608	749	674	90%	7	161	145	910	819	74%
McNair	Middle	7-8	90%	457	671	604	76%				671	604	76%
Cocoa	Jr / Sr High	PK,7-12	90%	1,531	1,730	1,557	98%	8	200	180	1,930	1,737	88%
Eau Gallie	High	PK, 9-12	95%	1,714	2,050	1,948	88%	10	250	238	2,300	2,186	78%
Rockledge	High	9-12	95%	1,374	1,691	1,606	86%	3	75	71	1,766	1,677	82%
Satellite	High	PK, 9-12	95%	1,319	1,580	1,501	88%	1	25	24	1,605	1,525	87%
Viera	High	PK, 9-12	95%	2,032	2,246	2,134	95%	6	150	143	2,396	2,277	89%
Totals: Central Area				22,620	26,431	25,524	89%	99	2,139	2,077	28,570	27,601	82%

Central Area Group Totals	Elementary	12,099	13,577	13,577	89%	61	1,256	1,256	14,833	14,833	82%
	Middle	2,551	3,557	3,201	80%	8	183	165	3,740	3,366	76%
	Jr/Sr High	1,531	1,730	1,557	98%	8	200	180	1,930	1,737	88%
	High	6,439	7,567	7,189	90%	20	500	476	8,067	7,665	84%



2014-15 School Year

School Capacity and Student Enrollment Analysis by Area

School Information				Student	Permanent			2014-2015 Relocatables			Total		
School	Type	Grades	Utilization Factor (Note 1)	Membership (Note 2)	2014-15 Student Stations (Note 3)	Factored Capacity (Note 4)	Capacity In Use (Note 5)	Classroom Units (Note 6)	Student Stations (Note 7)	Factored Capacity (Note 8)	Total Student Stations (Note 9)	Total Factored Capacity (Note 9)	Total Capacity In Use (Note 9)
North Area													
Apollo	Elementary	K-6	100%	766	902	902	85%				902	902	85%
Atlantis	Elementary	PK-6	100%	618	703	703	88%				703	703	88%
Audubon	Elementary	PK-6	100%	646	761	761	85%				761	761	85%
Cape View	Elementary	PK-6	100%	382	548	548	70%				548	548	70%
Carroll	Elementary	K-6	100%	620	751	751	83%				751	751	83%
Challenger 7	Elementary	K-6	100%	480	551	551	87%				551	551	87%
Coquina	Elementary	PK-6	100%	569	627	627	91%	3	66	66	693	693	82%
Enterprise	Elementary	K-6	100%	539	707	707	76%	1	22	22	729	729	74%
Freedom 7	Elementary	K-6	100%	407	453	453	90%	1	22	22	475	475	86%
Imperial Estates	Elementary	K-6	100%	664	729	729	91%				729	729	91%
Mila	Elementary	PK-6	100%	496	707	707	70%				707	707	70%
Mims	Elementary	PK-6	100%	582	725	725	80%				725	725	80%
Oak Park	Elementary	PK-6	100%	847	888	888	95%				888	888	95%
Pinewood	Elementary	PK-6	100%	442	503	503	88%				503	503	88%
Roosevelt	Elementary	PK-6	100%	371	599	599	62%				599	599	62%
Stevenson	Elementary	K-6	100%	483	569	569	85%				569	569	85%
Tropical	Elementary	K-6	100%	736	910	910	81%				910	910	81%
Jackson	Middle	7-8	90%	595	727	654	91%				727	654	91%
Jefferson	Middle	7-8	90%	651	942	848	77%				942	848	77%
Madison	Middle	7-8	90%	470	825	743	63%				825	743	63%
Cocoa Beach	Jr / Sr High	7-12	90%	1,127	1,253	1,128	100%	15	375	338	1,628	1,466	77%
Edgewood	Jr / Sr High	7-12	90%	941	1,107	996	95%	6	91	82	1,198	1,078	87%
Space Coast	Jr / Sr High	7-12	90%	1,528	1,975	1,778	86%	2	38	34	2,013	1,812	84%
Astronaut	High	9-12	95%	1,137	1,522	1,446	79%				1,522	1,446	79%
Merritt Island	High	PK, 9-12	95%	1,594	1,965	1,867	85%	2	50	48	2,015	1,915	83%
Titusville	High	PK, 9-12	95%	1,326	1,970	1,872	71%				1,970	1,872	71%
Totals: North Area				19,017	23,919	22,965	83%	30	664	612	24,583	23,577	81%

North Area Group Totals	Elementary	9,648	11,633	11,633	83%	5	110	110	11,743	11,743	82%
	Middle	1,716	2,494	2,245	76%	-	-	-	2,494	2,245	76%
	Jr/Sr High	3,596	4,335	3,902	92%	23	504	454	4,839	4,356	83%
	High	4,057	5,457	5,185	78%	2	50	48	5,507	5,233	78%



2014-15 School Year

School Capacity and Student Enrollment Analysis by Area

School Information				Student	Permanent			2014-2015 Relocatables			Total		
School	Type	Grades	Utilization Factor (Note 1)	Membership (Note 2)	2014-15 Student Stations (Note 3)	Factored Capacity (Note 4)	Capacity In Use (Note 5)	Classroom Units (Note 6)	Student Stations (Note 7)	Factored Capacity (Note 8)	Total Student Stations (Note 9)	Total Factored Capacity (Note 9)	Total Capacity In Use (Note 9)

School District Group Totals	Elementary	35,296	39,527	39,527	89%	145	3,014	3,014	42,541	42,541	83%
	Middle	7,757	10,911	9,820	79%	8	183	165	11,094	9,985	78%
	Jr/Sr High	6,084	7,297	6,568	93%	38	876	789	8,173	7,357	83%
	High	17,694	22,828	21,687	82%	29	725	690	23,553	22,377	79%

School District Grand Totals				66,831	80,563	77,602	86%	220	4,798	4,658	85,361	82,260	81%
-------------------------------------	--	--	--	---------------	---------------	---------------	------------	------------	--------------	--------------	---------------	---------------	------------

Notes:

- Note 1: Utilization Factors are established by the Florida Department of Education's (FDOE) State Requirements for Educational Facilities (SREF).
- Note 2: Student Membership based on Fall FTE Count (10/17/14)
- Note 3: Permanent Student Stations are based on the information contained in the FDOE Florida Inventory of School Houses (FISH) database on 1/22/15
- Note 4: Factored Capacity is calculated by multiplying Satisfactory Permanent Student Stations by the Utilization Factor.
- Note 5: Capacity in Use is calculated by dividing the Projected Student Membership by the Permanent Factored Capacity.
- Note 6: Relocatable Classroom Units are based on the information contained in the FDOE Florida Inventory of School Houses (FISH) database on 1/22/15
- Note 7: Relocatable Student Stations are based on the information contained in the FDOE Florida Inventory of School Houses (FISH) database on 1/22/15
- Note 8: Relocatable Factored Capacity is calculated by multiplying Satisfactory Relocatable Student Stations by the Utilization Factor.
- Note 9: Totals are calculated by adding Permanent and Relocatable data.



2014-15 School Year

School Capacity and Student Enrollment Analysis by Type

School Information				Student	Permanent			2014-2015 Relocatables			Total		
School	Type	Grades	Utilization Factor <small>(Note 1)</small>	Membership <small>(Note 2)</small>	2014-15 Student Stations <small>(Note 3)</small>	Factored Capacity <small>(Note 4)</small>	Capacity In Use <small>(Note 5)</small>	Class-room Units <small>(Note 6)</small>	Student Stations <small>(Note 7)</small>	Factored Capacity <small>(Note 8)</small>	Total Student Stations <small>(Note 9)</small>	Total Factored Capacity <small>(Note 9)</small>	Total Capacity In Use <small>(Note 9)</small>
Allen	Elementary	PK-6	100%	623	645	645	97%	4	84	84	729	729	86%
Andersen	Elementary	K-6	100%	714	840	840	85%	2	44	44	884	884	81%
Apollo	Elementary	K-6	100%	766	902	902	85%				902	902	85%
Atlantis	Elementary	PK-6	100%	618	703	703	88%				703	703	88%
Audubon	Elementary	PK-6	100%	646	761	761	85%				761	761	85%
Cambridge	Elementary	PK-6	100%	637	649	649	98%	6	116	116	765	765	83%
Cape View	Elementary	PK-6	100%	382	548	548	70%				548	548	70%
Carroll	Elementary	K-6	100%	620	751	751	83%				751	751	83%
Challenger 7	Elementary	K-6	100%	480	551	551	87%				551	551	87%
Columbia	Elementary	PK-6	100%	570	685	685	83%	3	66	66	751	751	76%
Coquina	Elementary	PK-6	100%	569	627	627	91%	3	66	66	693	693	82%
Creel	Elementary	PK-6	100%	972	1,088	1,088	89%	3	66	66	1,154	1,154	84%
Croton	Elementary	PK-6	100%	653	707	707	92%	4	88	88	795	795	82%
Discovery	Elementary	PK-6	100%	709	826	826	86%	7	154	154	980	980	72%
Endeavour	Elementary	PK-6	100%	808	852	852	95%	7	138	138	990	990	82%
Enterprise	Elementary	K-6	100%	539	707	707	76%	1	22	22	729	729	74%
Fairglen	Elementary	PK-6	100%	689	753	753	92%				753	753	92%
Freedom 7	Elementary	K-6	100%	407	453	453	90%	1	22	22	475	475	86%
Gemini	Elementary	K-6	100%	503	667	667	75%	2	44	44	711	711	71%
Golfview	Elementary	PK-6	100%	675	689	689	98%	4	88	88	777	777	87%
Harbor City	Elementary	K-6	100%	400	453	453	88%	8	176	176	629	629	64%
Holland	Elementary	K-6	100%	427	605	605	71%				605	605	71%
Imperial Estates	Elementary	K-6	100%	664	729	729	91%				729	729	91%
Indialantic	Elementary	K-6	100%	762	754	754	101%	2	44	44	798	798	96%
Jupiter	Elementary	PK-6	100%	844	780	780	108%	7	150	150	930	930	91%
Lockmar	Elementary	K-6	100%	786	892	892	88%				892	892	88%
Longleaf	Elementary	PK-6	100%	599	790	790	76%				790	790	76%
Manatee	Elementary	PK-6	100%	836	866	866	97%	7	132	132	998	998	84%
McAuliffe	Elementary	PK-6	100%	741	754	754	98%	8	164	164	918	918	81%
Meadowlane Intermediate	Elementary	3-6	100%	929	894	894	104%	11	220	220	1,114	1,114	83%
Meadowlane Primary	Elementary	K-2	100%	780	824	824	95%				824	824	95%
Mila	Elementary	PK-6	100%	496	707	707	70%				707	707	70%
Mims	Elementary	PK-6	100%	582	725	725	80%				725	725	80%
Oak Park	Elementary	PK-6	100%	847	888	888	95%				888	888	95%
Ocean Breeze	Elementary	K-6	100%	510	498	498	102%	8	156	156	654	654	78%



2014-15 School Year

School Capacity and Student Enrollment Analysis by Type

School Information				Student	Permanent			2014-2015 Relocatables			Total		
School	Type	Grades	Utilization Factor <small>(Note 1)</small>	Membership <small>(Note 2)</small>	2014-15 Student Stations <small>(Note 3)</small>	Factored Capacity <small>(Note 4)</small>	Capacity In Use <small>(Note 5)</small>	Class-room Units <small>(Note 6)</small>	Student Stations <small>(Note 7)</small>	Factored Capacity <small>(Note 8)</small>	Total Student Stations <small>(Note 9)</small>	Total Factored Capacity <small>(Note 9)</small>	Total Capacity In Use <small>(Note 9)</small>
Palm Bay	Elementary	PK-6	100%	859	829	829	104%	8	176	176	1,005	1,005	86%
Pinewood	Elementary	PK-6	100%	442	503	503	88%				503	503	88%
Port Malabar	Elementary	K-6	100%	772	768	768	101%	4	84	84	852	852	91%
Quest	Elementary	K-6	100%	774	928	928	83%	2			928	928	83%
Riviera	Elementary	PK-6	100%	715	689	689	104%	4	88	88	777	777	92%
Roosevelt	Elementary	PK-6	100%	371	599	599	62%				599	599	62%
Sabal	Elementary	PK-6	100%	585	679	679	86%	5	106	106	785	785	75%
Saturn	Elementary	PK-6	100%	748	830	830	90%	6	128	128	958	958	78%
Sea Park	Elementary	PK-6	100%	343	439	439	78%				439	439	78%
Sherwood	Elementary	PK-6	100%	544	609	609	89%				609	609	89%
Stevenson	Elementary	K-6	100%	483	569	569	85%				569	569	85%
Sunrise	Elementary	PK-6	100%	846	895	895	95%				895	895	95%
Suntree	Elementary	K-6	100%	629	689	689	91%	3	66	66	755	755	83%
Surfside	Elementary	K-6	100%	418	439	439	95%	2	40	40	479	479	87%
Tropical	Elementary	K-6	100%	736	910	910	81%				910	910	81%
Turner	Elementary	PK-6	100%	760	830	830	92%	2	44	44	874	874	87%
University Park	Elementary	PK-6	100%	634	679	679	93%	6	132	132	811	811	78%
West Melbourne	Elementary	K-6	100%	547	618	618	89%				618	618	89%
Westside	Elementary	K-6	100%	769	835	835	92%	1	22	22	857	857	90%
Williams	Elementary	K-6	100%	538	627	627	86%	4	88	88	715	715	75%
Central	Middle	7-8	90%	1,237	1,694	1,525	81%				1,694	1,525	81%
DeLaura	Middle	7-8	90%	699	1,026	923	76%				1,026	923	76%
Hoover	Middle	7-8	90%	564	732	659	86%				732	659	86%
Jackson	Middle	7-8	90%	595	727	654	91%				727	654	91%
Jefferson	Middle	7-8	90%	651	942	848	77%				942	848	77%
Johnson	Middle	7-8	90%	787	1,111	1,000	79%	1	22	20	1,133	1,020	77%
Kennedy	Middle	7-8	90%	608	749	674	90%	7	161	145	910	819	74%
Madison	Middle	7-8	90%	470	825	743	63%				825	743	63%
McNair	Middle	7-8	90%	457	671	604	76%				671	604	76%
Southwest	Middle	7-8	90%	905	1,308	1,177	77%				1,308	1,177	77%
Stone	Middle	7-8	90%	784	1,126	1,013	77%				1,126	1,013	77%
Cocoa	Jr / Sr High	PK,7-12	90%	1,531	1,730	1,557	98%	8	200	180	1,930	1,737	88%
Cocoa Beach	Jr / Sr High	7-12	90%	1,127	1,253	1,128	100%	15	375	338	1,628	1,466	77%
Edgewood	Jr / Sr High	7-12	90%	941	1,107	996	95%	6	91	82	1,198	1,078	87%
Space Coast	Jr / Sr High	7-12	90%	1,528	1,975	1,778	86%	2	38	34	2,013	1,812	84%
West Shore	Jr / Sr High	7-12	90%	957	1,232	1,109	86%	7	172	155	1,404	1,264	76%



2014-15 School Year

School Capacity and Student Enrollment Analysis by Type

School Information				Student	Permanent			2014-2015 Relocatables			Total		
School	Type	Grades	Utilization Factor (Note 1)	Membership (Note 2)	2014-15 Student Stations (Note 3)	Factored Capacity (Note 4)	Capacity In Use (Note 5)	Classroom Units (Note 6)	Student Stations (Note 7)	Factored Capacity (Note 8)	Total Student Stations (Note 9)	Total Factored Capacity (Note 9)	Total Capacity In Use (Note 9)
Astronaut	High	9-12	95%	1,137	1,522	1,446	79%				1,522	1,446	79%
Bayside	High	9-12	95%	1,643	2,353	2,235	74%				2,353	2,235	74%
Eau Gallie	High	PK, 9-12	95%	1,714	2,050	1,948	88%	10	250	238	2,300	2,186	78%
Heritage	High	9-11	95%	1,825	2,436	2,314	79%				2,436	2,314	79%
Melbourne	High	9-12	95%	2,131	2,439	2,317	92%				2,439	2,317	92%
Merritt Island	High	PK, 9-12	95%	1,594	1,965	1,867	85%	2	50	48	2,015	1,915	83%
Palm Bay	High	PK, 9-12	95%	1,599	2,576	2,447	65%	7	175	166	2,751	2,613	61%
Rockledge	High	9-12	95%	1,374	1,691	1,606	86%	3	75	71	1,766	1,677	82%
Satellite	High	PK, 9-12	95%	1,319	1,580	1,501	88%	1	25	24	1,605	1,525	87%
Titusville	High	PK, 9-12	95%	1,326	1,970	1,872	71%				1,970	1,872	71%
Viera	High	PK, 9-12	95%	2,032	2,246	2,134	95%	6	150	143	2,396	2,277	89%

School District Group Totals	Elementary	35,296	39,527	39,527	89%	145	3,014	3,014	42,541	42,541	83%
	Middle	7,757	10,911	9,820	79%	8	183	165	11,094	9,985	78%
	Jr/Sr High	6,084	7,297	6,568	93%	38	876	789	8,173	7,357	83%
	High	17,694	22,828	21,687	82%	29	725	690	23,553	22,377	79%

School District Grand Totals	66,831	80,563	77,602	86%	220	4,798	4,658	85,361	82,260	81%
------------------------------	--------	--------	--------	-----	-----	-------	-------	--------	--------	-----

Notes:

- Note 1: Utilization Factors are established by the Florida Department of Education's (FDOE) State Requirements for Educational Facilities (SREF).
- Note 2: Student Membership based on Fall FTE Count (10/17/14)
- Note 3: Permanent Student Stations are based on the information contained in the FDOE Florida Inventory of School Houses (FISH) database on 1/22/15
- Note 4: Factored Capacity is calculated by multiplying Satisfactory Permanent Student Stations by the Utilization Factor.
- Note 5: Capacity in Use is calculated by dividing the Projected Student Membership by the Permanent Factored Capacity.
- Note 6: Relocatable Classroom Units are based on the information contained in the FDOE Florida Inventory of School Houses (FISH) database on 1/22/15
- Note 7: Relocatable Student Stations are based on the information contained in the FDOE Florida Inventory of School Houses (FISH) database on 1/22/15
- Note 8: Relocatable Factored Capacity is calculated by multiplying Satisfactory Relocatable Student Stations by the Utilization Factor.
- Note 9: Totals are calculated by adding Permanent and Relocatable data.



Section 4

Capacity / Enrollment Projections 2015 - 2016

- A. By Area
- B. By School Type



2015-16 School Year

School Capacity and Enrollment Projections by School Area

School Information				Student	Permanent			2015 - 2016 Relocatables			Total (Note 9)		
School	Type	Grades	Utilization Factor (Note 1)	2015 - 2016 Projected Membership (Note 2)	2014-15 Student Stations (Note 3)	Factored Capacity (Note 4)	Capacity In Use (Note 5)	Classroom Units (Note 6)	Student Stations (Note 7)	Factored Capacity (Note 8)	Total Student Stations	Total Factored Capacity	Total Capacity In Use
South Area													
Allen	Elementary	PK-6	100%	621	645	645	96%	4	84	84	729	729	85%
Columbia	Elementary	PK-6	100%	570	685	685	83%	3	66	66	751	751	76%
Discovery	Elementary	PK-6	100%	714	826	826	86%	7	154	154	980	980	73%
Gemini	Elementary	K-6	100%	478	667	667	72%	2	44	44	711	711	67%
Harbor City	Elementary	K-6	100%	400	453	453	88%	8	176	176	629	629	64%
Indialantic	Elementary	K-6	100%	769	754	754	102%	2	44	44	798	798	96%
Jupiter	Elementary	PK-6	100%	850	780	780	109%	7	150	150	930	930	91%
Lockmar	Elementary	K-6	100%	773	892	892	87%				892	892	87%
McAuliffe	Elementary	PK-6	100%	723	754	754	96%	8	164	164	918	918	79%
Meadowlane Intermediate	Elementary	3-6	100%	977	894	894	109%	11	220	220	1,114	1,114	88%
Meadowlane Primary	Elementary	K-2	100%	692	824	824	84%				824	824	84%
Palm Bay	Elementary	PK-6	100%	854	829	829	103%	8	176	176	1,005	1,005	85%
Port Malabar	Elementary	K-6	100%	770	768	768	100%	4	84	84	852	852	90%
Riviera	Elementary	PK-6	100%	727	689	689	106%	4	88	88	777	777	94%
Sunrise	Elementary	PK-6	100%	848	895	895	95%				895	895	95%
Turner	Elementary	PK-6	100%	754	830	830	91%	2	44	44	874	874	86%
University Park	Elementary	PK-6	100%	652	679	679	96%	6	132	132	811	811	80%
West Melbourne	Elementary	K-6	100%	552	618	618	89%				618	618	89%
Westside	Elementary	K-6	100%	779	835	835	93%	1	22	22	857	857	91%
Central	Middle	7-8	90%	1,154	1,694	1,525	76%				1,694	1,525	76%
Hoover	Middle	7-8	90%	542	732	659	82%				732	659	82%
Southwest	Middle	7-8	90%	910	1,308	1,177	77%				1,308	1,177	77%
Stone	Middle	7-8	90%	792	1,126	1,013	78%				1,126	1,013	78%
West Shore	Jr / Sr High	7-12	90%	962	1,232	1,109	87%	7	172	155	1,404	1,264	76%
Bayside	High	9-12	95%	1,646	2,353	2,235	74%				2,353	2,235	74%
Heritage	High	9-11	95%	1,856	2,436	2,314	80%				2,436	2,314	80%
Melbourne	High	9-12	95%	2,181	2,439	2,317	94%				2,439	2,317	94%
Palm Bay	High	PK, 9-12	95%	1,642	2,576	2,447	67%	7	175	166	2,751	2,613	63%
Totals: South Area				25,188	30,213	29,113	87%	91	1,995	1,969	32,208	31,082	81%
South Area Group Totals	Elementary			13,503	14,317	14,317	94%	77	1,648	1,648	15,965	15,965	85%
	Middle			3,398	4,860	4,374	78%	-	-	-	4,860	4,374	78%
	Jr/Sr High			962	1,232	1,109	87%	7	172	155	1,404	1,264	76%
	High			7,325	9,804	9,313	79%	7	175	166	9,979	9,479	77%



2015-16 School Year

School Capacity and Enrollment Projections by School Area

School Information				Student	Permanent			2015 - 2016 Relocatables			Total (Note 9)		
School	Type	Grades	Utilization Factor (Note 1)	2015 - 2016 Projected Membership (Note 2)	2014-15 Student Stations (Note 3)	Factored Capacity (Note 4)	Capacity In Use (Note 5)	Classroom Units (Note 6)	Student Stations (Note 7)	Factored Capacity (Note 8)	Total Student Stations	Total Factored Capacity	Total Capacity In Use
Central Area													
Andersen	Elementary	K-6	100%	690	840	840	82%	2	44	44	884	884	78%
Cambridge	Elementary	PK-6	100%	650	649	649	100%	6	116	116	765	765	85%
Creel	Elementary	PK-6	100%	978	1,088	1,088	90%	3	66	66	1,154	1,154	85%
Croton	Elementary	PK-6	100%	653	707	707	92%	4	88	88	795	795	82%
Endeavour	Elementary	PK-6	100%	818	852	852	96%	7	138	138	990	990	83%
Fairglen	Elementary	PK-6	100%	686	753	753	91%				753	753	91%
Golfview	Elementary	PK-6	100%	691	689	689	100%	4	88	88	777	777	89%
Holland	Elementary	K-6	100%	430	605	605	71%				605	605	71%
Longleaf	Elementary	PK-6	100%	592	790	790	75%				790	790	75%
Manatee	Elementary	PK-6	100%	845	866	866	98%	7	132	132	998	998	85%
Ocean Breeze	Elementary	K-6	100%	513	498	498	103%	8	156	156	654	654	78%
Quest	Elementary	K-6	100%	783	928	928	84%	2			928	928	84%
Sabal	Elementary	PK-6	100%	582	679	679	86%	5	106	106	785	785	74%
Saturn	Elementary	PK-6	100%	740	830	830	89%	6	128	128	958	958	77%
Sea Park	Elementary	PK-6	100%	356	439	439	81%				439	439	81%
Sherwood	Elementary	PK-6	100%	544	609	609	89%				609	609	89%
Suntree	Elementary	K-6	100%	629	689	689	91%	3	66	66	755	755	83%
Surfside	Elementary	K-6	100%	438	439	439	100%	3	62	62	501	501	87%
Williams	Elementary	K-6	100%	519	627	627	83%	4	88	88	715	715	73%
DeLaura	Middle	7-8	90%	700	1,026	923	76%				1,026	923	76%
Johnson	Middle	7-8	90%	785	1,111	1,000	79%	1	22	20	1,133	1,020	77%
Kennedy	Middle	7-8	90%	596	749	674	88%	7	161	145	910	819	73%
McNair	Middle	7-8	90%	473	671	604	78%				671	604	78%
Cocoa	Jr / Sr High	PK,7-12	90%	1,634	1,730	1,557	105%	10	250	225	1,980	1,782	92%
Eau Gallie	High	PK, 9-12	95%	1,711	2,050	1,948	88%	10	250	238	2,300	2,186	78%
Rockledge	High	9-12	95%	1,387	1,691	1,606	86%	3	75	71	1,766	1,677	83%
Satellite	High	PK, 9-12	95%	1,360	1,580	1,501	91%	1	25	24	1,605	1,525	89%
Viera	High	PK, 9-12	95%	2,018	2,246	2,134	95%	6	150	143	2,396	2,277	89%
Totals: Central Area				22,801	26,431	25,524	89%	102	2,211	2,144	28,642	27,668	82%
Central Area Group Totals		Elementary		12,137	13,577	13,577	89%	64	1,278	1,278	14,855	14,855	82%
		Middle		2,554	3,557	3,201	80%	8	183	165	3,740	3,366	76%
		Jr/Sr High		1,634	1,730	1,557	105%	10	250	225	1,980	1,782	92%
		High		6,476	7,567	7,189	90%	20	500	476	8,067	7,665	85%



2015-16 School Year

School Capacity and Enrollment Projections by School Area

School Information				Student	Permanent			2015 - 2016 Relocatables			Total (Note 9)		
School	Type	Grades	Utilization Factor (Note 1)	2015 - 2016 Projected Membership (Note 2)	2014-15 Student Stations (Note 3)	Factored Capacity (Note 4)	Capacity In Use (Note 5)	Class-room Units (Note 6)	Student Stations (Note 7)	Factored Capacity (Note 8)	Total Student Stations	Total Factored Capacity	Total Capacity In Use
North Area													
Apollo	Elementary	K-6	100%	768	902	902	85%				902	902	85%
Atlantis	Elementary	PK-6	100%	613	703	703	87%				703	703	87%
Audubon	Elementary	PK-6	100%	650	761	761	85%				761	761	85%
Cape View	Elementary	PK-6	100%	380	548	548	69%				548	548	69%
Carroll	Elementary	K-6	100%	620	751	751	83%				751	751	83%
Challenger 7	Elementary	K-6	100%	477	551	551	87%				551	551	87%
Coquina	Elementary	PK-6	100%	572	627	627	91%	3	66	66	693	693	83%
Enterprise	Elementary	K-6	100%	529	707	707	75%	1	22	22	729	729	73%
Freedom 7	Elementary	K-6	100%	414	453	453	91%	1	22	22	475	475	87%
Imperial Estates	Elementary	K-6	100%	666	729	729	91%				729	729	91%
Mila	Elementary	PK-6	100%	487	707	707	69%				707	707	69%
Mims	Elementary	PK-6	100%	600	725	725	83%				725	725	83%
Oak Park	Elementary	PK-6	100%	852	888	888	96%	2	44	44	932	932	91%
Pinewood	Elementary	PK-6	100%	452	503	503	90%				503	503	90%
Roosevelt	Elementary	PK-6	100%	375	599	599	63%				599	599	63%
Stevenson	Elementary	K-6	100%	490	569	569	86%				569	569	86%
Tropical	Elementary	K-6	100%	750	910	910	82%				910	910	82%
Jackson	Middle	7-8	90%	585	727	654	89%				727	654	89%
Jefferson	Middle	7-8	90%	610	942	848	72%				942	848	72%
Madison	Middle	7-8	90%	470	825	743	63%				825	743	63%
Cocoa Beach	Jr / Sr High	7-12	90%	1,120	1,253	1,128	99%	15	375	338	1,628	1,466	76%
Edgewood	Jr / Sr High	7-12	90%	950	1,107	996	95%	6	91	82	1,198	1,078	88%
Space Coast	Jr / Sr High	7-12	90%	1,505	1,775	1,778	85%	2	38	34	2,013	1,812	83%
Astronaut	High	9-12	95%	1,120	1,522	1,446	78%				1,522	1,446	78%
Merritt Island	High	PK, 9-12	95%	1,613	1,965	1,867	86%	2	50	48	2,015	1,915	84%
Titusville	High	PK, 9-12	95%	1,331	1,970	1,872	71%				1,970	1,872	71%
Totals: North Area				18,999	23,919	22,965	83%	32	708	656	24,627	23,621	80%

North Area Group Totals	Elementary	9,695	11,633	11,633	83%	7	154	154	11,787	11,787	82%
	Middle	1,665	2,494	2,245	74%	-	-	-	2,494	2,245	74%
	Jr/Sr High	3,575	4,335	3,902	92%	23	504	454	4,839	4,356	82%
	High	4,064	5,457	5,185	78%	2	50	48	5,507	5,233	78%



2015-16 School Year

School Capacity and Enrollment Projections by School Area

School Information				Student	Permanent			2015 - 2016 Relocatables			Total (Note 9)		
School	Type	Grades	Utilization Factor <small>(Note 1)</small>	2015 - 2016 Projected Membership <small>(Note 2)</small>	2014-15 Student Stations <small>(Note 3)</small>	Factored Capacity <small>(Note 4)</small>	Capacity In Use <small>(Note 5)</small>	Classroom Units <small>(Note 6)</small>	Student Stations <small>(Note 7)</small>	Factored Capacity <small>(Note 8)</small>	Total Student Stations	Total Factored Capacity	Total Capacity In Use

School District Group Totals	Elementary	35,335	39,527	39,527	89%	148	3,080	3,080	42,607	42,607	83%
	Middle	7,617	10,911	9,820	78%	8	183	165	11,094	9,985	76%
	Jr/Sr High	6,171	7,297	6,568	94%	40	926	834	8,223	7,402	83%
	High	17,865	22,828	21,687	82%	29	725	690	23,553	22,377	80%

School District Grand Totals				66,988	80,563	77,602	86%	225	4,914	4,769	85,477	82,371	81%
-------------------------------------	--	--	--	---------------	---------------	---------------	------------	------------	--------------	--------------	---------------	---------------	------------

Notes:

- Note 1: Utilization Factors are established by the Florida Department of Education's (FDOE) State Requirements for Educational Facilities (SREF).
- Note 2: Projected Student Membership figures based on Finance 2015-16 Budget Projections combined with Growth Management Projections for 2016-17 to 2019-20 (updated 1/26/2015).
- Note 3: Permanent Student Stations are based on the information contained in the FDOE Florida Inventory of School Houses (FISH) database on 1/22/15
- Note 4: Factored Capacity is calculated by multiplying Satisfactory Permanent Student Stations by the Utilization Factor.
- Note 5: Capacity in Use is calculated by dividing the Projected Student Membership by the Permanent Factored Capacity.
- Note 6: Relocatable Classroom Units are based on the information contained in the FDOE Florida Inventory of School Houses (FISH) database on 1/22/15 plus the projected relocatable classroom changes for School Year 2015-16 (shown in red).
- Note 7: Relocatable Student Stations are based on the information contained in the FDOE Florida Inventory of School Houses (FISH) database on 1/22/15 plus the projected relocatable classroom changes for School Year 2015-16 (shown in red).
- Note 8: Relocatable Factored Capacity is calculated by multiplying Satisfactory Relocatable Student Stations by the Utilization Factor.
- Note 9: Totals are calculated by adding Permanent and Relocatable data.



2015-16 School Year

School Capacity and Enrollment Projections with Relocatable Changes by School Type

School Information				Student	Permanent			2015 - 2016 Relocatables			Total (Note 9)		
School	Type	Grades	Utilization Factor (Note 1)	2015 - 2016 Projected Membership (Note 2)	2014-15 Student Stations (Note 3)	Factored Capacity (Note 4)	Capacity In Use (Note 5)	Class-room Units (Note 6)	Student Stations (Note 7)	Factored Capacity (Note 8)	Total Student Stations	Total Factored Capacity	Total Capacity In Use
Allen	Elementary	PK-6	100%	621	645	645	96%	4	84	84	729	729	85%
Andersen	Elementary	K-6	100%	690	840	840	82%	2	44	44	884	884	78%
Apollo	Elementary	K-6	100%	768	902	902	85%				902	902	85%
Atlantis	Elementary	PK-6	100%	613	703	703	87%				703	703	87%
Audubon	Elementary	PK-6	100%	650	761	761	85%				761	761	85%
Cambridge	Elementary	PK-6	100%	650	649	649	100%	6	116	116	765	765	85%
Cape View	Elementary	PK-6	100%	380	548	548	69%				548	548	69%
Carroll	Elementary	K-6	100%	620	751	751	83%				751	751	83%
Challenger 7	Elementary	K-6	100%	477	551	551	87%				551	551	87%
Columbia	Elementary	PK-6	100%	570	685	685	83%	3	66	66	751	751	76%
Coquina	Elementary	PK-6	100%	572	627	627	91%	3	66	66	693	693	83%
Creel	Elementary	PK-6	100%	978	1,088	1,088	90%	3	66	66	1,154	1,154	85%
Croton	Elementary	PK-6	100%	653	707	707	92%	4	88	88	795	795	82%
Discovery	Elementary	PK-6	100%	714	826	826	86%	7	154	154	980	980	73%
Endeavour	Elementary	PK-6	100%	818	852	852	96%	7	138	138	990	990	83%
Enterprise	Elementary	K-6	100%	529	707	707	75%	1	22	22	729	729	73%
Fairglen	Elementary	PK-6	100%	686	753	753	91%				753	753	91%
Freedom 7	Elementary	K-6	100%	414	453	453	91%	1	22	22	475	475	87%
Gemini	Elementary	K-6	100%	478	667	667	72%	2	44	44	711	711	67%
Golfview	Elementary	PK-6	100%	691	689	689	100%	4	88	88	777	777	89%
Harbor City	Elementary	K-6	100%	400	453	453	88%	8	176	176	629	629	64%
Holland	Elementary	K-6	100%	430	605	605	71%				605	605	71%
Imperial Estates	Elementary	K-6	100%	666	729	729	91%				729	729	91%
Indialantic	Elementary	K-6	100%	769	754	754	102%	2	44	44	798	798	96%
Jupiter	Elementary	PK-6	100%	850	780	780	109%	7	150	150	930	930	91%
Lockmar	Elementary	K-6	100%	773	892	892	87%				892	892	87%
Longleaf	Elementary	PK-6	100%	592	790	790	75%				790	790	75%
Manatee	Elementary	PK-6	100%	845	866	866	98%	7	132	132	998	998	85%
McAuliffe	Elementary	PK-6	100%	723	754	754	96%	8	164	164	918	918	79%
Meadowlane Intermediate	Elementary	3-6	100%	977	894	894	109%	11	220	220	1,114	1,114	88%
Meadowlane Primary	Elementary	K-2	100%	692	824	824	84%				824	824	84%
Mila	Elementary	PK-6	100%	487	707	707	69%				707	707	69%
Mims	Elementary	PK-6	100%	600	725	725	83%				725	725	83%
Oak Park	Elementary	PK-6	100%	852	888	888	96%	2	44	44	932	932	91%
Ocean Breeze	Elementary	K-6	100%	513	498	498	103%	8	156	156	654	654	78%
Palm Bay	Elementary	PK-6	100%	854	829	829	103%	8	176	176	1,005	1,005	85%
Pinewood	Elementary	PK-6	100%	452	503	503	90%				503	503	90%
Port Malabar	Elementary	K-6	100%	770	768	768	100%	4	84	84	852	852	90%
Quest	Elementary	K-6	100%	783	928	928	84%	2			928	928	84%



2015-16 School Year

School Capacity and Enrollment Projections with Relocatable Changes by School Type

School Information				Student	Permanent			2015 - 2016 Relocatables			Total (Note 9)		
School	Type	Grades	Utilization Factor (Note 1)	2015 - 2016 Projected Membership (Note 2)	2014-15 Student Stations (Note 3)	Factored Capacity (Note 4)	Capacity In Use (Note 5)	Class-room Units (Note 6)	Student Stations (Note 7)	Factored Capacity (Note 8)	Total Student Stations	Total Factored Capacity	Total Capacity In Use
Riviera	Elementary	PK-6	100%	727	689	689	106%	4	88	88	777	777	94%
Roosevelt	Elementary	PK-6	100%	375	599	599	63%				599	599	63%
Sabal	Elementary	PK-6	100%	582	679	679	86%	5	106	106	785	785	74%
Saturn	Elementary	PK-6	100%	740	830	830	89%	6	128	128	958	958	77%
Sea Park	Elementary	PK-6	100%	356	439	439	81%				439	439	81%
Sherwood	Elementary	PK-6	100%	544	609	609	89%				609	609	89%
Stevenson	Elementary	K-6	100%	490	569	569	86%				569	569	86%
Sunrise	Elementary	PK-6	100%	848	895	895	95%				895	895	95%
Suntree	Elementary	K-6	100%	629	689	689	91%	3	66	66	755	755	83%
Surfside	Elementary	K-6	100%	438	439	439	100%	3	62	62	501	501	87%
Tropical	Elementary	K-6	100%	750	910	910	82%				910	910	82%
Turner	Elementary	PK-6	100%	754	830	830	91%	2	44	44	874	874	86%
University Park	Elementary	PK-6	100%	652	679	679	96%	6	132	132	811	811	80%
West Melbourne	Elementary	K-6	100%	552	618	618	89%				618	618	89%
Westside	Elementary	K-6	100%	779	835	835	93%	1	22	22	857	857	91%
Williams	Elementary	K-6	100%	519	627	627	83%	4	88	88	715	715	73%
Central	Middle	7-8	90%	1,154	1,694	1,525	76%				1,694	1,525	76%
DeLaura	Middle	7-8	90%	700	1,026	923	76%				1,026	923	76%
Hoover	Middle	7-8	90%	542	732	659	82%				732	659	82%
Jackson	Middle	7-8	90%	585	727	654	89%				727	654	89%
Jefferson	Middle	7-8	90%	610	942	848	72%				942	848	72%
Johnson	Middle	7-8	90%	785	1,111	1,000	79%	1	22	20	1,133	1,020	77%
Kennedy	Middle	7-8	90%	596	749	674	88%	7	161	145	910	819	73%
Madison	Middle	7-8	90%	470	825	743	63%				825	743	63%
McNair	Middle	7-8	90%	473	671	604	78%				671	604	78%
Southwest	Middle	7-8	90%	910	1,308	1,177	77%				1,308	1,177	77%
Stone	Middle	7-8	90%	792	1,126	1,013	78%				1,126	1,013	78%
Cocoa	Jr / Sr High	PK,7-12	90%	1,634	1,730	1,557	105%	10	250	225	1,980	1,782	92%
Cocoa Beach	Jr / Sr High	7-12	90%	1,120	1,253	1,128	99%	15	375	338	1,628	1,466	76%
Edgewood	Jr / Sr High	7-12	90%	950	1,107	996	95%	6	91	82	1,198	1,078	88%
Space Coast	Jr / Sr High	7-12	90%	1,505	1,975	1,778	85%	2	38	34	2,013	1,812	83%
West Shore	Jr / Sr High	7-12	90%	962	1,232	1,109	87%	7	172	155	1,404	1,264	76%



2015-16 School Year

School Capacity and Enrollment Projections with Relocatable Changes by School Type

School Information				Student	Permanent			2015 - 2016 Relocatables			Total (Note 9)		
School	Type	Grades	Utilization Factor (Note 1)	2015 - 2016 Projected Membership (Note 2)	2014-15 Student Stations (Note 3)	Factored Capacity (Note 4)	Capacity In Use (Note 5)	Class-room Units (Note 6)	Student Stations (Note 7)	Factored Capacity (Note 8)	Total Student Stations	Total Factored Capacity	Total Capacity In Use
Astronaut	High	9-12	95%	1,120	1,522	1,446	78%				1,522	1,446	78%
Bayside	High	9-12	95%	1,646	2,353	2,235	74%				2,353	2,235	74%
Eau Gallie	High	PK, 9-12	95%	1,711	2,050	1,948	88%	10	250	238	2,300	2,186	78%
Heritage	High	9-11	95%	1,856	2,436	2,314	80%				2,436	2,314	80%
Melbourne	High	9-12	95%	2,181	2,439	2,317	94%				2,439	2,317	94%
Merritt Island	High	PK, 9-12	95%	1,613	1,965	1,867	86%	2	50	48	2,015	1,915	84%
Palm Bay	High	PK, 9-12	95%	1,642	2,576	2,447	67%	7	175	166	2,751	2,613	63%
Rockledge	High	9-12	95%	1,387	1,691	1,606	86%	3	75	71	1,766	1,677	83%
Satellite	High	PK, 9-12	95%	1,360	1,580	1,501	91%	1	25	24	1,605	1,525	89%
Titusville	High	PK, 9-12	95%	1,331	1,970	1,872	71%				1,970	1,872	71%
Viera	High	PK, 9-12	95%	2,018	2,246	2,134	95%	6	150	143	2,396	2,277	89%

School District Group Totals	Elementary	35,335	39,527	39,527	89%	148	3,080	3,080	42,607	42,607	83%
	Middle	7,617	10,911	9,820	78%	8	183	165	11,094	9,985	76%
	Jr/Sr High	6,171	7,297	6,568	94%	40	926	834	8,223	7,402	83%
	High	17,865	22,828	21,687	82%	29	725	690	23,553	22,377	80%

School District Grand Totals	66,988	80,563	77,602	86%	225	4,914	4,769	85,477	82,371	81%
------------------------------	--------	--------	--------	-----	-----	-------	-------	--------	--------	-----

Notes:

Note 1: Utilization Factors are established by the Florida Department of Education's (FDOE) State Requirements for Educational Facilities (SREF).

Note 2: Projected Student Membership figures based on Finance 2015-16 Budget Projections combined with Growth Management Projections for 2016-17 to 2019-20 (updated 1/26/2015).

Note 3: Permanent Student Stations are based on the information contained in the FDOE Florida Inventory of School Houses (FISH) database on 1/22/15

Note 4: Factored Capacity is calculated by multiplying Satisfactory Permanent Student Stations by the Utilization Factor.

Note 5: Capacity in Use is calculated by dividing the Projected Student Membership by the Permanent Factored Capacity.

Note 6: Relocatable Classroom Units are based on the information contained in the FDOE Florida Inventory of School Houses (FISH) database on 1/22/15 plus the projected relocatable classroom changes for School Year 2015-16 (shown in red).

Note 7: Relocatable Student Stations are based on the information contained in the FDOE Florida Inventory of School Houses (FISH) database on 1/22/15 plus the projected relocatable classroom changes for School Year 2015-16 (shown in red).

Note 8: Relocatable Factored Capacity is calculated by multiplying Satisfactory Relocatable Student Stations by the Utilization Factor.

Note 9: Totals are calculated by adding Permanent and Relocatable data.



Section 5

Capacity / Enrollment Projections 2015-16 to 2019-20

- A. By Area
- B. By School Type



School Year 2015-16 -- 2019-20

School Information and Student Membership Projections by Area

School Information and Capacity						Projected Student Membership						Projected Capacity in Use					
School Information				Permanent Only		Current Year	(Note 4)					Current Year	(Note 5)				
School	Type	Grades	Utilization Factor (Note 1)	2014-2015 Student Stations (Note 2)	2014-2015 Factored Capacity (Note 3)	2014-15	2015-16	2016-17	2017-18	2018-19	2019-20	2014-15	2015-16	2016-17	2017-18	2018-19	2019-20
South Area																	
Allen	Elementary	PK-6	100%	645	645	623	621	632	623	633	630	97%	96%	98%	97%	98%	98%
Columbia	Elementary	PK-6	100%	685	685	570	570	554	549	518	505	83%	83%	81%	80%	76%	74%
Discovery	Elementary	PK-6	100%	826	826	709	714	710	701	675	656	86%	86%	86%	85%	82%	79%
Gemini	Elementary	K-6	100%	667	667	503	478	450	420	432	428	75%	72%	68%	63%	65%	64%
Harbor City	Elementary	K-6	100%	453	453	400	400	393	379	383	369	88%	88%	87%	84%	85%	82%
Indialantic	Elementary	K-6	100%	754	754	762	769	754	731	731	686	101%	102%	100%	97%	97%	91%
Jupiter	Elementary	PK-6	100%	780	780	844	850	889	915	922	907	108%	109%	114%	117%	118%	116%
Lockmar	Elementary	K-6	100%	892	892	786	773	777	777	769	757	88%	87%	87%	87%	86%	85%
McAuliffe	Elementary	PK-6	100%	754	754	741	723	719	726	735	703	98%	96%	95%	96%	98%	93%
Meadowlane Intermediate	Elementary	3-6	100%	894	894	929	977	1,030	1,044	1,048	1,020	104%	109%	115%	117%	117%	114%
Meadowlane Primary	Elementary	K-2	100%	824	824	780	692	684	677	666	661	95%	84%	83%	82%	81%	80%
Palm Bay	Elementary	PK-6	100%	829	829	859	854	871	876	889	887	104%	103%	105%	106%	107%	107%
Port Malabar	Elementary	K-6	100%	768	768	772	770	788	797	815	793	101%	100%	103%	104%	106%	103%
Riviera	Elementary	PK-6	100%	689	689	715	727	763	780	782	767	104%	106%	111%	113%	114%	111%
Sunrise	Elementary	PK-6	100%	895	895	846	848	872	883	872	866	95%	95%	97%	99%	97%	97%
Turner	Elementary	PK-6	100%	830	830	760	754	788	811	860	879	92%	91%	95%	98%	104%	106%
University Park	Elementary	PK-6	100%	679	679	634	652	653	658	666	628	93%	96%	96%	97%	98%	93%
West Melbourne	Elementary	K-6	100%	618	618	547	552	552	552	552	552	89%	89%	89%	89%	89%	89%
Westside	Elementary	K-6	100%	835	835	769	779	818	836	843	832	92%	93%	98%	100%	101%	100%
Central	Middle	7-8	90%	1,694	1,525	1,237	1,154	1,159	1,227	1,302	1,403	81%	76%	76%	81%	85%	92%
Hoover	Middle	7-8	90%	732	659	564	542	546	612	584	600	86%	82%	83%	93%	89%	91%
Southwest	Middle	7-8	90%	1,308	1,177	905	910	957	964	981	1,051	77%	77%	81%	82%	83%	89%
Stone	Middle	7-8	90%	1,126	1,013	784	792	799	853	900	970	77%	78%	79%	84%	89%	96%
West Shore	Jr / Sr High	7-12	90%	1,232	1,109	957	962	962	962	962	962	86%	87%	87%	87%	87%	87%
Bayside	High	9-12	95%	2,353	2,235	1,643	1,646	1,530	1,412	1,345	1,374	74%	74%	69%	63%	60%	62%
Heritage	High	9-11	95%	2,436	2,314	1,825	1,856	1,858	1,750	1,669	1,637	79%	80%	80%	76%	72%	71%
Melbourne	High	9-12	95%	2,439	2,317	2,131	2,181	2,278	2,240	2,266	2,346	92%	94%	98%	97%	98%	101%
Palm Bay	High	PK, 9-12	95%	2,576	2,447	1,599	1,642	1,625	1,629	1,559	1,592	65%	67%	66%	67%	64%	65%
Totals: South Area				30,213	29,113	25,194	25,188	25,411	25,384	25,359	25,461	87%	87%	87%	87%	87%	88%
South Area Group Totals	Elementary			14,317	14,317	13,549	13,503	13,697	13,735	13,791	13,526	95%	94%	96%	96%	96%	95%
	Middle			4,860	4,374	3,490	3,398	3,461	3,656	3,767	4,024	80%	78%	79%	84%	86%	92%
	Jr / Sr High			1,232	1,109	957	962	962	962	962	962	86%	87%	87%	87%	87%	87%
	High			9,804	9,313	7,198	7,325	7,291	7,031	6,839	6,949	77%	79%	78%	76%	73%	75%



School Year 2015-16 -- 2019-20

School Information and Student Membership Projections by Area

School Information and Capacity						Projected Student Membership						Projected Capacity in Use					
School Information				Permanent Only		Current Year	(Note 4)					Current Year	(Note 5)				
School	Type	Grades	Utilization Factor (Note 1)	2014-2015 Student Stations (Note 2)	2014-2015 Factored Capacity (Note 3)	2014-15	2015-16	2016-17	2017-18	2018-19	2019-20	2014-15	2015-16	2016-17	2017-18	2018-19	2019-20
Central Area																	
Andersen	Elementary	K-6	100%	840	840	714	690	712	734	766	786	85%	82%	85%	87%	91%	94%
Cambridge	Elementary	PK-6	100%	649	649	637	650	642	621	602	574	98%	100%	99%	96%	93%	88%
Creel	Elementary	PK-6	100%	1,088	1,088	972	978	979	978	1,006	1,002	89%	90%	90%	90%	93%	92%
Croton	Elementary	PK-6	100%	707	707	653	653	639	635	646	621	92%	92%	90%	90%	91%	88%
Endeavour	Elementary	PK-6	100%	852	852	808	818	869	904	915	901	95%	96%	102%	106%	107%	106%
Fairglen	Elementary	PK-6	100%	753	753	689	686	679	669	660	659	92%	91%	90%	89%	88%	88%
Golfview	Elementary	PK-6	100%	689	689	675	691	710	704	701	717	98%	100%	103%	102%	102%	104%
Holland	Elementary	K-6	100%	605	605	427	430	431	439	465	473	71%	71%	71%	73%	77%	78%
Longleaf	Elementary	PK-6	100%	790	790	599	592	557	531	533	508	76%	75%	71%	67%	68%	64%
Manatee	Elementary	PK-6	100%	866	866	836	845	855	843	848	837	97%	98%	99%	97%	98%	97%
Ocean Breeze	Elementary	K-6	100%	498	498	510	513	525	552	562	548	102%	103%	105%	111%	113%	110%
Quest	Elementary	K-6	100%	928	928	774	783	838	877	871	857	83%	84%	90%	95%	94%	92%
Sabal	Elementary	PK-6	100%	679	679	585	582	579	577	575	579	86%	86%	85%	85%	85%	85%
Saturn	Elementary	PK-6	100%	830	830	748	740	748	754	741	748	90%	89%	90%	91%	89%	90%
Sea Park	Elementary	PK-6	100%	439	439	343	356	351	357	365	359	78%	81%	80%	81%	83%	82%
Sherwood	Elementary	PK-6	100%	609	609	544	544	554	573	586	587	89%	89%	91%	94%	96%	96%
Suntree	Elementary	K-6	100%	689	689	629	629	602	590	584	573	91%	91%	87%	86%	85%	83%
Surfside	Elementary	K-6	100%	439	439	418	438	445	435	427	408	95%	100%	101%	99%	97%	93%
Williams	Elementary	K-6	100%	627	627	538	519	505	495	486	487	86%	83%	81%	79%	78%	78%
DeLaura	Middle	7-8	90%	1,026	923	699	700	727	775	779	834	76%	76%	79%	84%	84%	90%
Johnson	Middle	7-8	90%	1,111	1,000	787	785	847	863	844	876	79%	79%	85%	86%	84%	88%
Kennedy	Middle	7-8	90%	749	674	608	596	662	723	714	723	90%	88%	98%	107%	106%	107%
McNair	Middle	7-8	90%	671	604	457	473	501	533	551	545	76%	78%	83%	88%	91%	90%
Cocoa	Jr / Sr High	PK,7-12	90%	1,730	1,557	1,531	1,634	1,784	1,879	1,995	2,108	98%	105%	115%	121%	128%	135%
Eau Gallie	High	PK, 9-12	95%	2,050	1,948	1,714	1,711	1,755	1,779	1,854	1,925	88%	88%	90%	91%	95%	99%
Rockledge	High	9-12	95%	1,691	1,606	1,374	1,387	1,524	1,573	1,648	1,698	86%	86%	95%	98%	103%	106%
Satellite	High	PK, 9-12	95%	1,580	1,501	1,319	1,360	1,330	1,287	1,305	1,339	88%	91%	89%	86%	87%	89%
Viera	High	PK, 9-12	95%	2,246	2,134	2,032	2,018	1,979	1,994	2,023	2,135	95%	95%	93%	93%	95%	100%
Totals: Central Area				26,431	25,524	22,620	22,801	23,329	23,674	24,052	24,407	89%	89%	91%	93%	94%	96%
Central Area Group Totals	Elementary			13,577	13,577	12,099	12,137	12,220	12,268	12,339	12,224	89%	89%	90%	90%	91%	90%
	Middle			3,557	3,201	2,551	2,554	2,737	2,894	2,888	2,978	80%	80%	86%	90%	90%	93%
	Jr / Sr High			1,730	1,557	1,531	1,634	1,784	1,879	1,995	2,108	98%	105%	115%	121%	128%	135%
	High			7,567	7,189	6,439	6,476	6,588	6,633	6,830	7,097	90%	90%	92%	92%	95%	99%



School Year 2015-16 -- 2019-20

School Information and Student Membership Projections by Area

School Information and Capacity						Projected Student Membership						Projected Capacity in Use					
School Information				Permanent Only		Current Year	(Note 4)					Current Year	(Note 5)				
School	Type	Grades	Utilization Factor (Note 1)	2014-2015 Student Stations (Note 2)	2014-2015 Factored Capacity (Note 3)	2014-15	2015-16	2016-17	2017-18	2018-19	2019-20	2014-15	2015-16	2016-17	2017-18	2018-19	2019-20
North Area																	
Apollo	Elementary	K-6	100%	902	902	766	768	771	767	770	774	85%	85%	86%	85%	85%	86%
Atlantis	Elementary	PK-6	100%	703	703	618	613	596	574	561	526	88%	87%	85%	82%	80%	75%
Audubon	Elementary	PK-6	100%	761	761	646	650	652	652	637	622	85%	85%	86%	86%	84%	82%
Cape View	Elementary	PK-6	100%	548	548	382	380	404	441	479	488	70%	69%	74%	81%	87%	89%
Carroll	Elementary	K-6	100%	751	751	620	620	618	623	620	610	83%	83%	82%	83%	83%	81%
Challenger 7	Elementary	K-6	100%	551	551	480	477	474	469	457	446	87%	87%	86%	85%	83%	81%
Coquina	Elementary	PK-6	100%	627	627	569	572	571	569	575	565	91%	91%	91%	91%	92%	90%
Enterprise	Elementary	K-6	100%	707	707	539	529	505	476	439	407	76%	75%	71%	67%	62%	58%
Freedom 7	Elementary	K-6	100%	453	453	407	414	414	414	414	414	90%	91%	91%	91%	91%	91%
Imperial Estates	Elementary	K-6	100%	729	729	664	666	659	648	638	596	91%	91%	90%	89%	88%	82%
Mila	Elementary	PK-6	100%	707	707	496	487	503	501	497	465	70%	69%	71%	71%	70%	66%
Mims	Elementary	PK-6	100%	725	725	582	600	589	559	522	470	80%	83%	81%	77%	72%	65%
Oak Park	Elementary	PK-6	100%	888	888	847	852	837	821	787	745	95%	96%	94%	93%	89%	84%
Pinewood	Elementary	PK-6	100%	503	503	442	452	455	443	436	407	88%	90%	91%	88%	87%	81%
Roosevelt	Elementary	PK-6	100%	599	599	371	375	378	370	371	350	62%	63%	63%	62%	62%	58%
Stevenson	Elementary	K-6	100%	569	569	483	490	490	490	490	490	85%	86%	86%	86%	86%	86%
Tropical	Elementary	K-6	100%	910	910	736	750	771	759	755	744	81%	82%	85%	83%	83%	82%
Jackson	Middle	7-8	90%	727	654	595	585	605	604	625	649	91%	89%	93%	92%	96%	99%
Jefferson	Middle	7-8	90%	942	848	651	610	577	560	610	667	77%	72%	68%	66%	72%	79%
Madison	Middle	7-8	90%	825	743	470	470	479	500	520	551	63%	63%	65%	67%	70%	74%
Cocoa Beach	Jr / Sr High	7-12	90%	1,253	1,128	1,127	1,120	1,120	1,120	1,120	1,120	100%	99%	99%	99%	99%	99%
Edgewood	Jr / Sr High	7-12	90%	1,107	996	941	950	950	950	950	950	95%	95%	95%	95%	95%	95%
Space Coast	Jr / Sr High	7-12	90%	1,975	1,778	1,528	1,505	1,451	1,435	1,407	1,408	86%	85%	82%	81%	79%	79%
Astronaut	High	9-12	95%	1,522	1,446	1,137	1,120	1,066	997	938	934	79%	78%	74%	69%	65%	65%
Merritt Island	High	PK, 9-12	95%	1,965	1,867	1,594	1,613	1,624	1,627	1,562	1,515	85%	86%	87%	87%	84%	81%
Titusville	High	PK, 9-12	95%	1,970	1,872	1,326	1,331	1,383	1,423	1,491	1,497	71%	71%	74%	76%	80%	80%
Totals: North Area				23,919	22,965	19,017	18,999	18,942	18,792	18,671	18,410	83%	83%	83%	82%	81%	80%
North Area Group Totals		Elementary		11,633	11,633	9,648	9,695	9,687	9,576	9,448	9,119	83%	83%	83%	82%	81%	78%
		Middle		2,494	2,245	1,716	1,665	1,661	1,664	1,755	1,867	76%	74%	74%	74%	78%	83%
		Jr / Sr High		4,335	3,902	3,596	3,575	3,521	3,505	3,477	3,478	92%	92%	90%	90%	89%	89%
		High		5,457	5,185	4,057	4,064	4,073	4,047	3,991	3,946	78%	78%	79%	78%	77%	76%



School Year 2015-16 -- 2019-20

School Information and Student Membership Projections by Area

School Information and Capacity					Projected Student Membership						Projected Capacity in Use						
School Information				Permanent Only		Current Year	(Note 4)					Current Year	(Note 5)				
School	Type	Grades	Utilization Factor (Note 1)	2014-2015 Student Stations (Note 2)	2014-2015 Factored Capacity (Note 3)	2014-15	2015-16	2016-17	2017-18	2018-19	2019-20	2014-15	2015-16	2016-17	2017-18	2018-19	2019-20

School District Group Totals	Elementary		39,527	39,527	35,296	35,335	35,604	35,579	35,578	34,869	89%	89%	90%	90%	90%	88%
	Middle		10,911	9,820	7,757	7,617	7,859	8,214	8,410	8,869	79%	78%	80%	84%	86%	90%
	Jr / Sr High		7,297	6,568	6,084	6,171	6,267	6,346	6,434	6,548	93%	94%	95%	97%	98%	100%
	High		22,828	21,687	17,694	17,865	17,952	17,711	17,660	17,992	82%	82%	83%	82%	81%	83%
School District Grand Totals			80,563	77,602	66,831	66,988	67,682	67,850	68,082	68,278	86%	86%	87%	87%	88%	88%

Notes:

Note 1: Utilization Factors are established by the Florida Department of Education's (FDOE) State Requirements for Educational Facilities (SREF).

DOE Utilization Factors for Brevard Schools Elementary Schools: 100% Middle Schools: 90%
 Jr/Sr High Schools: 90% Senior High Schools: 95%

Note 2: Permanent Student Stations for 2014-2015 are based on the information contained in the FDOE Florida Inventory of School Houses (FISH) database on 1/22/2014.

Note 3: Factored Capacity is calculated by multiplying Satisfactory Permanent Student Stations by the Utilization Factor.

Note 4: Projected Student Membership figures based on Finance 2015-16 Budget Projections combined with Growth Management Projections for 2016-17 to 2019-20.

Note 5: Projected Capacity in Use is calculated by dividing the Projected Student Membership by the Permanent Factored Capacity.



School Year 2015-16 -- 2019-20

School Information and Student Membership Projections by School Type

School Information and Capacity						Projected Student Membership						Projected Capacity in Use					
School Information				Permanent Only		Current Year	(Note 4)					Current Year	(Note 5)				
School	Type	Grades	Utilization Factor (Note 1)	2014-2015 Student Stations (Note 2)	2014-2015 Factored Capacity (Note 3)	2014-15	2015-16	2016-17	2017-18	2018-19	2019-20	2014-15	2015-16	2016-17	2017-18	2018-19	2019-20
Allen	Elementary	PK-6	100%	645	645	623	621	632	623	633	630	97%	96%	98%	97%	98%	98%
Andersen	Elementary	K-6	100%	840	840	714	690	712	734	766	786	85%	82%	85%	87%	91%	94%
Apollo	Elementary	K-6	100%	902	902	766	768	771	767	770	774	85%	85%	86%	85%	85%	86%
Atlantis	Elementary	PK-6	100%	703	703	618	613	596	574	561	526	88%	87%	85%	82%	80%	75%
Audubon	Elementary	PK-6	100%	761	761	646	650	652	652	637	622	85%	85%	86%	86%	84%	82%
Cambridge	Elementary	PK-6	100%	649	649	637	650	642	621	602	574	98%	100%	99%	96%	93%	88%
Cape View	Elementary	PK-6	100%	548	548	382	380	404	441	479	488	70%	69%	74%	81%	87%	89%
Carroll	Elementary	K-6	100%	751	751	620	620	618	623	620	610	83%	83%	82%	83%	83%	81%
Challenger 7	Elementary	K-6	100%	551	551	480	477	474	469	457	446	87%	87%	86%	85%	83%	81%
Columbia	Elementary	PK-6	100%	685	685	570	570	554	549	518	505	83%	83%	81%	80%	76%	74%
Coquina	Elementary	PK-6	100%	627	627	569	572	571	569	575	565	91%	91%	91%	91%	92%	90%
Creel	Elementary	PK-6	100%	1,088	1,088	972	978	979	978	1,006	1,002	89%	90%	90%	90%	93%	92%
Croton	Elementary	PK-6	100%	707	707	653	653	639	635	646	621	92%	92%	90%	90%	91%	88%
Discovery	Elementary	PK-6	100%	826	826	709	714	710	701	675	656	86%	86%	86%	85%	82%	79%
Endeavour	Elementary	PK-6	100%	852	852	808	818	869	904	915	901	95%	96%	102%	106%	107%	106%
Enterprise	Elementary	K-6	100%	707	707	539	529	505	476	439	407	76%	75%	71%	67%	62%	58%
Fairglen	Elementary	PK-6	100%	753	753	689	686	679	669	660	659	92%	91%	90%	89%	88%	88%
Freedom 7	Elementary	K-6	100%	453	453	407	414	414	414	414	414	90%	91%	91%	91%	91%	91%
Gemini	Elementary	K-6	100%	667	667	503	478	450	420	432	428	75%	72%	68%	63%	65%	64%
Golfview	Elementary	PK-6	100%	689	689	675	691	710	704	701	717	98%	100%	103%	102%	102%	104%
Harbor City	Elementary	K-6	100%	453	453	400	400	393	379	383	369	88%	88%	87%	84%	85%	82%
Holland	Elementary	K-6	100%	605	605	427	430	431	439	465	473	71%	71%	71%	73%	77%	78%
Imperial Estates	Elementary	K-6	100%	729	729	664	666	659	648	638	596	91%	91%	90%	89%	88%	82%
Indialantic	Elementary	K-6	100%	754	754	762	769	754	731	731	686	101%	102%	100%	97%	97%	91%
Jupiter	Elementary	PK-6	100%	780	780	844	850	889	915	922	907	108%	109%	114%	117%	118%	116%
Lockmar	Elementary	K-6	100%	892	892	786	773	777	777	769	757	88%	87%	87%	87%	86%	85%
Longleaf	Elementary	PK-6	100%	790	790	599	592	557	531	533	508	76%	75%	71%	67%	68%	64%
Manatee	Elementary	PK-6	100%	866	866	836	845	855	843	848	837	97%	98%	99%	97%	98%	97%
McAuliffe	Elementary	PK-6	100%	754	754	741	723	719	726	735	703	98%	96%	95%	96%	98%	93%
Meadowlane Intermediate	Elementary	3-6	100%	894	894	929	977	1,030	1,044	1,048	1,020	104%	109%	115%	117%	117%	114%
Meadowlane Primary	Elementary	K-2	100%	824	824	780	692	684	677	666	661	95%	84%	83%	82%	81%	80%
Mila	Elementary	PK-6	100%	707	707	496	487	503	501	497	465	70%	69%	71%	71%	70%	66%
Mims	Elementary	PK-6	100%	725	725	582	600	589	559	522	470	80%	83%	81%	77%	72%	65%
Oak Park	Elementary	PK-6	100%	888	888	847	852	837	821	787	745	95%	96%	94%	93%	89%	84%
Ocean Breeze	Elementary	K-6	100%	498	498	510	513	525	552	562	548	102%	103%	105%	111%	113%	110%



School Year 2015-16 -- 2019-20

School Information and Student Membership Projections by School Type

School Information and Capacity					Projected Student Membership							Projected Capacity in Use					
School Information				Permanent Only		Current Year	(Note 4)					Current Year	(Note 5)				
School	Type	Grades	Utilization Factor (Note 1)	2014-2015 Student Stations (Note 2)	2014-2015 Factored Capacity (Note 3)	2014-15	2015-16	2016-17	2017-18	2018-19	2019-20	2014-15	2015-16	2016-17	2017-18	2018-19	2019-20
Palm Bay	Elementary	PK-6	100%	829	829	859	854	871	876	889	887	104%	103%	105%	106%	107%	107%
Pinewood	Elementary	PK-6	100%	503	503	442	452	455	443	436	407	88%	90%	91%	88%	87%	81%
Port Malabar	Elementary	K-6	100%	768	768	772	770	788	797	815	793	101%	100%	103%	104%	106%	103%
Quest	Elementary	K-6	100%	928	928	774	783	838	877	871	857	83%	84%	90%	95%	94%	92%
Riviera	Elementary	PK-6	100%	689	689	715	727	763	780	782	767	104%	106%	111%	113%	114%	111%
Roosevelt	Elementary	PK-6	100%	599	599	371	375	378	370	371	350	62%	63%	63%	62%	58%	
Sabal	Elementary	PK-6	100%	679	679	585	582	579	577	575	579	86%	86%	85%	85%	85%	85%
Saturn	Elementary	PK-6	100%	830	830	748	740	748	754	741	748	90%	89%	90%	91%	89%	90%
Sea Park	Elementary	PK-6	100%	439	439	343	356	351	357	365	359	78%	81%	80%	81%	83%	82%
Sherwood	Elementary	PK-6	100%	609	609	544	544	554	573	586	587	89%	89%	91%	94%	96%	96%
Stevenson	Elementary	K-6	100%	569	569	483	490	490	490	490	490	85%	86%	86%	86%	86%	86%
Sunrise	Elementary	PK-6	100%	895	895	846	848	872	883	872	866	95%	95%	97%	99%	97%	97%
Suntree	Elementary	K-6	100%	689	689	629	629	602	590	584	573	91%	91%	87%	86%	85%	83%
Surfside	Elementary	K-6	100%	439	439	418	438	445	435	427	408	95%	100%	101%	99%	97%	93%
Tropical	Elementary	K-6	100%	910	910	736	750	771	759	755	744	81%	82%	85%	83%	83%	82%
Turner	Elementary	PK-6	100%	830	830	760	754	788	811	860	879	92%	91%	95%	98%	104%	106%
University Park	Elementary	PK-6	100%	679	679	634	652	653	658	666	628	93%	96%	96%	97%	98%	93%
West Melbourne	Elementary	K-6	100%	618	618	547	552	552	552	552	552	89%	89%	89%	89%	89%	89%
Westside	Elementary	K-6	100%	835	835	769	779	818	836	843	832	92%	93%	98%	100%	101%	100%
Williams	Elementary	K-6	100%	627	627	538	519	505	495	486	487	86%	83%	81%	79%	78%	78%
Central	Middle	7-8	90%	1,694	1,525	1,237	1,154	1,159	1,227	1,302	1,403	81%	76%	76%	81%	85%	92%
DeLaura	Middle	7-8	90%	1,026	923	699	700	727	775	779	834	76%	76%	79%	84%	84%	90%
Hoover	Middle	7-8	90%	732	659	564	542	546	612	584	600	86%	82%	83%	93%	89%	91%
Jackson	Middle	7-8	90%	727	654	595	585	605	604	625	649	91%	89%	93%	92%	96%	99%
Jefferson	Middle	7-8	90%	942	848	651	610	577	560	610	667	77%	72%	68%	66%	72%	79%
Johnson	Middle	7-8	90%	1,111	1,000	787	785	847	863	844	876	79%	79%	85%	86%	84%	88%
Kennedy	Middle	7-8	90%	749	674	608	596	662	723	714	723	90%	88%	98%	107%	106%	107%
Madison	Middle	7-8	90%	825	743	470	470	479	500	520	551	63%	63%	65%	67%	70%	74%
McNair	Middle	7-8	90%	671	604	457	473	501	533	551	545	76%	78%	83%	88%	91%	90%
Southwest	Middle	7-8	90%	1,308	1,177	905	910	957	964	981	1,051	77%	77%	81%	82%	83%	89%
Stone	Middle	7-8	90%	1,126	1,013	784	792	799	853	900	970	77%	78%	79%	84%	89%	96%
Cocoa	Jr / Sr High	PK,7-12	90%	1,730	1,557	1,531	1,634	1,784	1,879	1,995	2,108	98%	105%	115%	121%	128%	135%
Cocoa Beach	Jr / Sr High	7-12	90%	1,253	1,128	1,127	1,120	1,120	1,120	1,120	1,120	100%	99%	99%	99%	99%	99%
Edgewood	Jr / Sr High	7-12	90%	1,107	996	941	950	950	950	950	950	95%	95%	95%	95%	95%	95%
Space Coast	Jr / Sr High	7-12	90%	1,975	1,778	1,528	1,505	1,451	1,435	1,407	1,408	86%	85%	82%	81%	79%	79%
West Shore	Jr / Sr High	7-12	90%	1,232	1,109	957	962	962	962	962	962	86%	87%	87%	87%	87%	87%



School Year 2015-16 -- 2019-20

School Information and Student Membership Projections by School Type

School Information and Capacity							Projected Student Membership						Projected Capacity in Use				
School Information				Permanent Only		Current Year	(Note 4)					Current Year	(Note 5)				
School	Type	Grades	Utilization Factor <small>(Note 1)</small>	2014-2015 Student Stations <small>(Note 2)</small>	2014-2015 Factored Capacity <small>(Note 3)</small>	2014-15	2015-16	2016-17	2017-18	2018-19	2019-20	2014-15	2015-16	2016-17	2017-18	2018-19	2019-20
Astronaut	High	9-12	95%	1,522	1,446	1,137	1,120	1,066	997	938	934	79%	78%	74%	69%	65%	65%
Bayside	High	9-12	95%	2,353	2,235	1,643	1,646	1,530	1,412	1,345	1,374	74%	74%	69%	63%	60%	62%
Eau Gallie	High	PK, 9-12	95%	2,050	1,948	1,714	1,711	1,755	1,779	1,854	1,925	88%	88%	90%	91%	95%	99%
Heritage	High	9-11	95%	2,436	2,314	1,825	1,856	1,858	1,750	1,669	1,637	79%	80%	80%	76%	72%	71%
Melbourne	High	9-12	95%	2,439	2,317	2,131	2,181	2,278	2,240	2,266	2,346	92%	94%	98%	97%	98%	101%
Merritt Island	High	PK, 9-12	95%	1,965	1,867	1,594	1,613	1,624	1,627	1,562	1,515	85%	86%	87%	87%	84%	81%
Palm Bay	High	PK, 9-12	95%	2,576	2,447	1,599	1,642	1,625	1,629	1,559	1,592	65%	67%	66%	67%	64%	65%
Rockledge	High	9-12	95%	1,691	1,606	1,374	1,387	1,524	1,573	1,648	1,698	86%	86%	95%	98%	103%	106%
Satellite	High	PK, 9-12	95%	1,580	1,501	1,319	1,360	1,330	1,287	1,305	1,339	88%	91%	89%	86%	87%	89%
Titusville	High	PK, 9-12	95%	1,970	1,872	1,326	1,331	1,383	1,423	1,491	1,497	71%	71%	74%	76%	80%	80%
Viera	High	PK, 9-12	95%	2,246	2,134	2,032	2,018	1,979	1,994	2,023	2,135	95%	95%	93%	93%	95%	100%

School District Group Totals	Elementary		39,527	39,527	35,296	35,335	35,604	35,579	35,578	34,869	89%	89%	90%	90%	90%	88%
	Middle		10,911	9,820	7,757	7,617	7,859	8,214	8,410	8,869	79%	78%	80%	84%	86%	90%
	Jr / Sr High		7,297	6,568	6,084	6,171	6,267	6,346	6,434	6,548	93%	94%	95%	97%	98%	100%
	High		22,828	21,687	17,694	17,865	17,952	17,711	17,660	17,992	82%	82%	83%	82%	81%	83%

School District Grand Totals			80,563	77,602	66,831	66,988	67,682	67,850	68,082	68,278	86%	86%	87%	87%	88%	88%
-------------------------------------	--	--	---------------	---------------	---------------	---------------	---------------	---------------	---------------	---------------	------------	------------	------------	------------	------------	------------

Notes:

Note 1: Utilization Factors are established by the Florida Department of Education's (FDOE) State Requirements for Educational Facilities (SREF).
 DOE Utilization Factors for Brevard Schools Elementary Schools: 100% Middle Schools: 90%
 Jr/Sr High Schools: 90% Senior High Schools: 95%

Note 2: Permanent Student Stations for 2014-2015 are based on the information contained in the FDOE Florida Inventory of School Houses (FISH) database on 1/22/2014.

Note 3: Factored Capacity is calculated by multiplying Satisfactory Permanent Student Stations by the Utilization Factor.

Note 4: Projected Student Membership figures based on Finance 2015-16 Budget Projections combined with Growth Management Projections for 2016-17 to 2019-20.

Note 5: Projected Capacity in Use is calculated by dividing the Projected Student Membership by the Permanent Factored Capacity.



Section 6

Relocatable Classroom Changes: 2015 - 2016

- A. By Area
- B. By School Type
- C. Relocatable Inventory 2014-2015



School Year 2015-16 Relocatable Classroom Changes

School Capacity and Enrollment Projections by School Area

School Information and Capacity																	
School Information		Student	Permanent		2014-2015 Relocatables			2014-15	Relocatable Changes			2015 - 2016 Relocatables			2015-16 Totals		
School	Utilization Factor <small>(Note 1)</small>	2015 - 2016 Projected Membership <small>(Note 2)</small>	2014-15 Student Stations <small>(Note 3)</small>	Factored Capacity <small>(Note 4)</small>	Class-room Units	2014-15 Student Stations <small>(Note 3)</small>	Factored Capacity <small>(Note 4)</small>	Total Capacity In Use <small>(Note 5)</small>	Class-room Units	Student Stations	Factored Capacity	Class-room Units <small>(Note 6)</small>	Student Stations <small>(Note 7)</small>	Factored Capacity <small>(Note 8)</small>	Total Student Stations	Total Factored Capacity	Total Capacity In Use <small>(Note 9)</small>
South Area																	
Allen	100%	621	645	645	4	84	84	85%				4	84	84	729	729	85%
Columbia	100%	570	685	685	3	66	66	76%				3	66	66	751	751	76%
Discovery	100%	714	826	826	7	154	154	73%				7	154	154	980	980	73%
Gemini	100%	478	667	667	2	44	44	67%				2	44	44	711	711	67%
Harbor City	100%	400	453	453	8	176	176	64%				8	176	176	629	629	64%
Indialantic	100%	769	754	754	2	44	44	96%				2	44	44	798	798	96%
Jupiter	100%	850	780	780	7	150	150	91%				7	150	150	930	930	91%
Lockmar	100%	773	892	892				87%							892	892	87%
McAuliffe	100%	723	754	754	8	164	164	79%				8	164	164	918	918	79%
Meadowlane Intermediate	100%	977	894	894	11	220	220	88%				11	220	220	1,114	1,114	88%
Meadowlane Primary	100%	692	824	824				84%							824	824	84%
Palm Bay	100%	854	829	829	8	176	176	85%				8	176	176	1,005	1,005	85%
Port Malabar	100%	770	768	768	4	84	84	90%				4	84	84	852	852	90%
Riviera	100%	727	689	689	4	88	88	94%				4	88	88	777	777	94%
Sunrise	100%	848	895	895				95%							895	895	95%
Turner	100%	754	830	830	2	44	44	86%				2	44	44	874	874	86%
University Park	100%	652	679	679	6	132	132	80%				6	132	132	811	811	80%
West Melbourne	100%	552	618	618				89%							618	618	89%
Westside	100%	779	835	835	1	22	22	91%				1	22	22	857	857	91%
Central	90%	1,154	1,694	1,525				76%							1,694	1,525	76%
Hoover	90%	542	732	659				82%							732	659	82%
Southwest	90%	910	1,308	1,177				77%							1,308	1,177	77%
Stone	90%	792	1,126	1,013				78%							1,126	1,013	78%
West Shore	90%	962	1,232	1,109	7	172	155	76%				7	172	155	1,404	1,264	76%
Bayside	95%	1,647	2,353	2,235				74%							2,353	2,235	74%
Heritage	95%	1,856	2,436	2,314				80%							2,436	2,314	80%
Melbourne	95%	2,181	2,439	2,317				94%							2,439	2,317	94%
Palm Bay	95%	1,641	2,576	2,447	7	175	166	63%				7	175	166	2,751	2,613	63%
Totals: South Area		25,188	30,213	29,113	91	1,995	1,969	81%				91	1,995	1,969	32,208	31,082	81%
South Area Group Totals	Elementary	13,503	14,317	14,317	77	1,648	1,648	85%	-	-	-	77	1,648	1,648	15,965	15,965	85%
	Middle	3,398	4,860	4,374	-	-	-	78%	-	-	-	-	-	-	4,860	4,374	78%
	Jr/Sr High	962	1,232	1,109	7	172	155	76%	-	-	-	7	172	155	1,404	1,264	76%
	High	7,325	9,804	9,313	7	175	166	77%	-	-	-	7	175	166	9,979	9,479	77%



School Year 2015-16 Relocatable Classroom Changes

School Capacity and Enrollment Projections by School Area

School Information and Capacity																	
School Information		Student	Permanent		2014-2015 Relocatables			2014-15	Relocatable Changes			2015 - 2016 Relocatables			2015-16 Totals		
School	Utilization Factor <small>(Note 1)</small>	2015 - 2016 Projected Membership <small>(Note 2)</small>	2014-15 Student Stations <small>(Note 3)</small>	Factored Capacity <small>(Note 4)</small>	Class-room Units	2014-15 Student Stations <small>(Note 3)</small>	Factored Capacity <small>(Note 4)</small>	Total Capacity In Use <small>(Note 5)</small>	Class-room Units	Student Stations	Factored Capacity	Class-room Units <small>(Note 6)</small>	Student Stations <small>(Note 7)</small>	Factored Capacity <small>(Note 8)</small>	Total Student Stations	Total Factored Capacity	Total Capacity In Use <small>(Note 9)</small>
Central Area																	
Andersen	100%	690	840	840	2	44	44	78%				2	44	44	884	884	78%
Cambridge	100%	650	649	649	6	116	116	85%				6	116	116	765	765	85%
Creel	100%	978	1,088	1,088	3	66	66	85%				3	66	66	1,154	1,154	85%
Croton	100%	653	707	707	4	88	88	82%				4	88	88	795	795	82%
Endeavour	100%	818	852	852	7	138	138	83%				7	138	138	990	990	83%
Fairglen	100%	686	753	753				91%							753	753	91%
Golfview	100%	691	689	689	4	88	88	89%				4	88	88	777	777	89%
Holland	100%	430	605	605				71%							605	605	71%
Longleaf	100%	592	790	790				75%							790	790	75%
Manatee	100%	845	866	866	7	132	132	85%				7	132	132	998	998	85%
Ocean Breeze	100%	513	498	498	8	156	156	78%				8	156	156	654	654	78%
Quest	100%	783	928	928	2			84%				2			928	928	84%
Sabal	100%	582	679	679	5	106	106	74%				5	106	106	785	785	74%
Saturn	100%	740	830	830	6	128	128	77%				6	128	128	958	958	77%
Sea Park	100%	356	439	439				81%							439	439	81%
Sherwood	100%	544	609	609				89%							609	609	89%
Suntree	100%	629	689	689	3	66	66	83%				3	66	66	755	755	83%
Surfside	100%	438	439	439	2	40	40	91%	1	22	22	3	62	62	501	501	87%
Williams	100%	519	627	627	4	88	88	73%				4	88	88	715	715	73%
DeLaura	90%	700	1,026	923				76%							1,026	923	76%
Johnson	90%	785	1,111	1,000	1	22	20	77%				1	22	20	1,133	1,020	77%
Kennedy	90%	596	749	674	7	161	145	73%				7	161	145	910	819	73%
McNair	90%	473	671	604				78%							671	604	78%
Cocoa	90%	1,634	1,730	1,557	8	200	180	94%	2	50	45	10	250	225	1,980	1,782	92%
Eau Gallie	95%	1,711	2,050	1,948	10	250	238	78%				10	250	238	2,300	2,186	78%
Rockledge	95%	1,387	1,691	1,606	3	75	71	83%				3	75	71	1,766	1,677	83%
Satellite	95%	1,360	1,580	1,501	1	25	24	89%				1	25	24	1,605	1,525	89%
Viera	95%	2,018	2,246	2,134	6	150	143	89%				6	150	143	2,396	2,277	89%
Totals: Central Area		22,801	26,431	25,524	99	2,139	2,077	83%	3	72	67	102	2,211	2,144	28,642	27,668	82%
Central Area Group Totals	Elementary	12,137	13,577	13,577	63	1,256	1,256	82%	1	22	22	64	1,278	1,278	14,855	14,855	82%
	Middle	2,554	3,557	3,201	8	183	165	76%	-	-	-	8	183	165	3,740	3,366	76%
	Jr/Sr High	1,634	1,730	1,557	8	200	180	94%	2	50	45	10	250	225	1,980	1,782	92%
	High	6,476	7,567	7,189	20	500	476	84%	-	-	-	20	500	476	8,067	7,665	85%



School Year 2015-16 Relocatable Classroom Changes

School Capacity and Enrollment Projections by School Area

School Information and Capacity																	
School Information		Student	Permanent		2014-2015 Relocatables			2014-15	Relocatable Changes			2015 - 2016 Relocatables			2015-16 Totals		
School	Utilization Factor <small>(Note 1)</small>	2015 - 2016 Projected Membership <small>(Note 2)</small>	2014-15 Student Stations <small>(Note 3)</small>	Factored Capacity <small>(Note 4)</small>	Class-room Units	2014-15 Student Stations <small>(Note 3)</small>	Factored Capacity <small>(Note 4)</small>	Total Capacity In Use <small>(Note 5)</small>	Class-room Units	Student Stations	Factored Capacity	Class-room Units <small>(Note 6)</small>	Student Stations <small>(Note 7)</small>	Factored Capacity <small>(Note 8)</small>	Total Student Stations	Total Factored Capacity	Total Capacity In Use <small>(Note 9)</small>
North Area																	
Apollo	100%	768	902	902				85%							902	902	85%
Atlantis	100%	613	703	703				87%							703	703	87%
Audubon	100%	650	761	761				85%							761	761	85%
Cape View	100%	380	548	548				69%							548	548	69%
Carroll	100%	620	751	751				83%							751	751	83%
Challenger 7	100%	477	551	551				87%							551	551	87%
Coquina	100%	572	627	627	3	66	66	83%				3	66	66	693	693	83%
Enterprise	100%	529	707	707	1	22	22	73%				1	22	22	729	729	73%
Freedom 7	100%	414	453	453	1	22	22	87%				1	22	22	475	475	87%
Imperial Estates	100%	666	729	729				91%							729	729	91%
Mila	100%	487	707	707				69%							707	707	69%
Mims	100%	600	725	725				83%							725	725	83%
Oak Park	100%	852	888	888				96%	2	44	44	2	44	44	932	932	91%
Pinewood	100%	452	503	503				90%							503	503	90%
Roosevelt	100%	375	599	599				63%							599	599	63%
Stevenson	100%	490	569	569				86%							569	569	86%
Tropical	100%	750	910	910				82%							910	910	82%
Jackson	90%	585	727	654				89%							727	654	89%
Jefferson	90%	610	942	848				72%							942	848	72%
Madison	90%	470	825	743				63%							825	743	63%
Cocoa Beach	90%	1,120	1,253	1,128	15	375	338	76%				15	375	338	1,628	1,466	76%
Edgewood	90%	950	1,107	996	6	91	82	88%				6	91	82	1,198	1,078	88%
Space Coast	90%	1,505	1,975	1,778	2	38	34	83%				2	38	34	2,013	1,812	83%
Astronaut	95%	1,120	1,522	1,446				77%							1,522	1,446	78%
Merritt Island	95%	1,613	1,965	1,867	2	50	48	84%				2	50	48	2,015	1,915	84%
Titusville	95%	1,331	1,970	1,872				71%							1,970	1,872	71%
Totals: North Area		18,999	23,919	22,965	30	664	612	81%	2	44	44	32	708	656	24,627	23,621	80%
North Area Group Totals	Elementary	9,695	11,633	11,633	5	110	110	83%	2	44	44	7	154	154	11,787	11,787	82%
	Middle	1,665	2,494	2,245	-	-	-	74%	-	-	-	-	-	-	2,494	2,245	74%
	Jr/Sr High	3,575	4,335	3,902	23	504	454	82%	-	-	-	23	504	454	4,839	4,356	82%
	High	4,064	5,457	5,185	2	50	48	78%	-	-	-	2	50	48	5,507	5,233	78%



School Year 2015-16 Relocatable Classroom Changes

School Capacity and Enrollment Projections by School Area

School Information and Capacity																	
School Information		Student	Permanent		2014-2015 Relocatables			2014-15	Relocatable Changes			2015 - 2016 Relocatables			2015-16 Totals		
School	Utilization Factor <small>(Note 1)</small>	2015 - 2016 Projected Membership <small>(Note 2)</small>	2014-15 Student Stations <small>(Note 3)</small>	Factored Capacity <small>(Note 4)</small>	Class-room Units	2014-15 Student Stations <small>(Note 3)</small>	Factored Capacity <small>(Note 4)</small>	Total Capacity In Use <small>(Note 5)</small>	Class-room Units	Student Stations	Factored Capacity	Class-room Units <small>(Note 6)</small>	Student Stations <small>(Note 7)</small>	Factored Capacity <small>(Note 8)</small>	Total Student Stations	Total Factored Capacity	Total Capacity In Use <small>(Note 9)</small>

School District Group Totals	Elementary	35,335	39,527	39,527	145	3,014	3,014	83%	3	66	66	148	3,080	3,080	42,607	42,607	83%
	Middle	7,617	10,911	9,820	8	183	165	76%	-	-	-	8	183	165	11,094	9,985	76%
	Jr/Sr High	6,171	7,297	6,568	38	876	789	84%	2	50	45	40	926	834	8,223	7,402	83%
	High	17,865	22,828	21,687	29	725	690	80%	-	-	-	29	725	690	23,553	22,377	80%

School District Grand Totals		66,988	80,563	77,602	220	4,798	4,658	81%	5	116	111	225	4,914	4,769	85,477	82,371	81%
------------------------------	--	--------	--------	--------	-----	-------	-------	-----	---	-----	-----	-----	-------	-------	--------	--------	-----

Notes:

- Note 1: Utilization Factors are established by the Florida Department of Education's (FDOE) State Requirements for Educational Facilities (SREF).
- Note 2: Projected Student Membership figures based on Finance 2015-16 Budget Projections combined with Growth Management Projections for 2016-17 to 2019-20 (updated 1/26/2015).
- Note 3: Permanent and Relocatable Student Stations are based on the information contained in the FDOE Florida Inventory of School Houses (FISH) database on 1/22/15
- Note 4: Factored Capacity is calculated by multiplying the Student Stations by the Utilization Factor. Permanent and Relocatable Factored Capacities are calculated independently.
- Note 5: Total Capacity in Use is calculated by dividing the Projected Student Membership by the Total of Permanent Factored Capacity and Relocatable Factored Capacity.
- Note 6: Relocatable Classroom Units are based on the information contained in the FDOE Florida Inventory of School Houses (FISH) database on 1/22/15 plus the projected relocatable classroom changes for School Year 2015-16 (shown in red).
- Note 7: Relocatable Student Stations are based on the information contained in the FDOE Florida Inventory of School Houses (FISH) database on 1/22/15 plus the projected relocatable classroom changes for School Year 2015-16 (shown in red).
- Note 8: Relocatable Factored Capacity is calculated by multiplying Satisfactory Relocatable Student Stations by the Utilization Factor.
- Note 9: Totals are calculated by adding Permanent and Relocatable data.



School Year 2015-16 Relocatable Classroom Changes

School Capacity and Enrollment Projections by School Type

School Information and Capacity																	
School Information		Student	Permanent		2014-2015 Relocatables			2014-15	Relocatable Changes			2015 - 2016 Relocatables			2015-16 Totals		
School	Utilization Factor	2015 - 2016 Projected Membership	2014-15 Student Stations	Factored Capacity	Class-room Units	2014-15 Student Stations	Factored Capacity	Total Capacity In Use	Class-room Units	Student Stations	Factored Capacity	Class-room Units	Student Stations	Factored Capacity	Total Student Stations	Total Factored Capacity	Total Capacity In Use
	(Note 1)	(Note 2)	(Note 3)	(Note 4)		(Note 3)	(Note 4)	(Note 5)				(Note 6)	(Note 7)	(Note 8)			(Note 9)
Allen	100%	621	645	645	4	84	84	85%				4	84	84	729	729	85%
Andersen	100%	690	840	840	2	44	44	78%				2	44	44	884	884	78%
Apollo	100%	768	902	902				85%							902	902	85%
Atlantis	100%	613	703	703				87%							703	703	87%
Audubon	100%	650	761	761				85%							761	761	85%
Cambridge	100%	650	649	649	6	116	116	85%				6	116	116	765	765	85%
Cape View	100%	380	548	548				69%							548	548	69%
Carroll	100%	620	751	751				83%							751	751	83%
Challenger 7	100%	477	551	551				87%							551	551	87%
Columbia	100%	570	685	685	3	66	66	76%				3	66	66	751	751	76%
Coquina	100%	572	627	627	3	66	66	83%				3	66	66	693	693	83%
Creel	100%	978	1,088	1,088	3	66	66	85%				3	66	66	1,154	1,154	85%
Croton	100%	653	707	707	4	88	88	82%				4	88	88	795	795	82%
Discovery	100%	714	826	826	7	154	154	73%				7	154	154	980	980	73%
Endeavour	100%	818	852	852	7	138	138	83%				7	138	138	990	990	83%
Enterprise	100%	529	707	707	1	22	22	73%				1	22	22	729	729	73%
Fairglen	100%	686	753	753				91%							753	753	91%
Freedom 7	100%	414	453	453	1	22	22	87%				1	22	22	475	475	87%
Gemini	100%	478	667	667	2	44	44	67%				2	44	44	711	711	67%
Golfview	100%	691	689	689	4	88	88	89%				4	88	88	777	777	89%
Harbor City	100%	400	453	453	8	176	176	64%				8	176	176	629	629	64%
Holland	100%	430	605	605				71%							605	605	71%
Imperial Estates	100%	666	729	729				91%							729	729	91%
Indialantic	100%	769	754	754	2	44	44	96%				2	44	44	798	798	96%
Jupiter	100%	850	780	780	7	150	150	91%				7	150	150	930	930	91%
Lockmar	100%	773	892	892				87%							892	892	87%
Longleaf	100%	592	790	790				75%							790	790	75%
Manatee	100%	845	866	866	7	132	132	85%				7	132	132	998	998	85%
McAuliffe	100%	723	754	754	8	164	164	79%				8	164	164	918	918	79%
Meadowlane Intermediate	100%	977	894	894	11	220	220	88%				11	220	220	1,114	1,114	88%
Meadowlane Primary	100%	692	824	824				84%							824	824	84%
Mila	100%	487	707	707				69%							707	707	69%
Mims	100%	600	725	725				83%							725	725	83%
Oak Park	100%	852	888	888				96%	2	44	44	2	44	44	932	932	91%
Ocean Breeze	100%	513	498	498	8	156	156	78%				8	156	156	654	654	78%
Palm Bay	100%	854	829	829	8	176	176	85%				8	176	176	1,005	1,005	85%
Pinewood	100%	452	503	503				90%							503	503	90%
Port Malabar	100%	770	768	768	4	84	84	90%				4	84	84	852	852	90%
Quest	100%	783	928	928	2			84%				2			928	928	84%



School Year 2015-16 Relocatable Classroom Changes

School Capacity and Enrollment Projections by School Type

School Information and Capacity																	
School Information		Student	Permanent		2014-2015 Relocatables			2014-15	Relocatable Changes			2015 - 2016 Relocatables			2015-16 Totals		
School	Utilization Factor	2015 - 2016 Projected Membership	2014-15 Student Stations	Factored Capacity	Class-room Units	2014-15 Student Stations	Factored Capacity	Total Capacity In Use	Class-room Units	Student Stations	Factored Capacity	Class-room Units	Student Stations	Factored Capacity	Total Student Stations	Total Factored Capacity	Total Capacity In Use
	(Note 1)	(Note 2)	(Note 3)	(Note 4)		(Note 3)	(Note 4)	(Note 5)				(Note 6)	(Note 7)	(Note 8)			(Note 9)
Riviera	100%	727	689	689	4	88	88	94%				4	88	88	777	777	94%
Roosevelt	100%	375	599	599				63%							599	599	63%
Sabal	100%	582	679	679	5	106	106	74%				5	106	106	785	785	74%
Saturn	100%	740	830	830	6	128	128	77%				6	128	128	958	958	77%
Sea Park	100%	356	439	439				81%							439	439	81%
Sherwood	100%	544	609	609				89%							609	609	89%
Stevenson	100%	490	569	569				86%							569	569	86%
Sunrise	100%	848	895	895				95%							895	895	95%
Suntree	100%	629	689	689	3	66	66	83%				3	66	66	755	755	83%
Surfside	100%	438	439	439	2	40	40	91%	1	22	22	3	62	62	501	501	87%
Tropical	100%	750	910	910				82%							910	910	82%
Turner	100%	754	830	830	2	44	44	86%				2	44	44	874	874	86%
University Park	100%	652	679	679	6	132	132	80%				6	132	132	811	811	80%
West Melbourne	100%	552	618	618				89%							618	618	89%
Westside	100%	779	835	835	1	22	22	91%				1	22	22	857	857	91%
Williams	100%	519	627	627	4	88	88	73%				4	88	88	715	715	73%
Central	90%	1,154	1,694	1,525				76%							1,694	1,525	76%
DeLaura	90%	700	1,026	923				76%							1,026	923	76%
Hoover	90%	542	732	659				82%							732	659	82%
Jackson	90%	585	727	654				89%							727	654	89%
Jefferson	90%	610	942	848				72%							942	848	72%
Johnson	90%	785	1,111	1,000	1	22	20	77%				1	22	20	1,133	1,020	77%
Kennedy	90%	596	749	674	7	161	145	73%				7	161	145	910	819	73%
Madison	90%	470	825	743				63%							825	743	63%
McNair	90%	473	671	604				78%							671	604	78%
Southwest	90%	910	1,308	1,177				77%							1,308	1,177	77%
Stone	90%	792	1,126	1,013				78%							1,126	1,013	78%
Cocoa	90%	1,634	1,730	1,557	8	200	180	94%	2	50	45	10	250	225	1,980	1,782	92%
Cocoa Beach	90%	1,120	1,253	1,128	15	375	338	76%				15	375	338	1,628	1,466	76%
Edgewood	90%	950	1,107	996	6	91	82	88%				6	91	82	1,198	1,078	88%
Space Coast	90%	1,505	1,975	1,778	2	38	34	83%				2	38	34	2,013	1,812	83%
West Shore	90%	962	1,232	1,109	7	172	155	76%				7	172	155	1,404	1,264	76%



School Year 2015-16 Relocatable Classroom Changes

School Capacity and Enrollment Projections by School Type

School Information and Capacity																	
School Information		Student	Permanent		2014-2015 Relocatables			2014-15	Relocatable Changes			2015 - 2016 Relocatables			2015-16 Totals		
School	Utilization Factor <small>(Note 1)</small>	2015 - 2016 Projected Membership <small>(Note 2)</small>	2014-15 Student Stations <small>(Note 3)</small>	Factored Capacity <small>(Note 4)</small>	Class-room Units	2014-15 Student Stations <small>(Note 3)</small>	Factored Capacity <small>(Note 4)</small>	Total Capacity In Use <small>(Note 5)</small>	Class-room Units	Student Stations	Factored Capacity	Class-room Units <small>(Note 6)</small>	Student Stations <small>(Note 7)</small>	Factored Capacity <small>(Note 8)</small>	Total Student Stations	Total Factored Capacity	Total Capacity In Use <small>(Note 9)</small>
Astronaut	95%	1,120	1,522	1,446				77%							1,522	1,446	78%
Bayside	95%	1,647	2,353	2,235				74%							2,353	2,235	74%
Eau Gallie	95%	1,711	2,050	1,948	10	250	238	78%				10	250	238	2,300	2,186	78%
Heritage	95%	1,856	2,436	2,314				80%							2,436	2,314	80%
Melbourne	95%	2,181	2,439	2,317				94%							2,439	2,317	94%
Merritt Island	95%	1,613	1,965	1,867	2	50	48	84%				2	50	48	2,015	1,915	84%
Palm Bay	95%	1,641	2,576	2,447	7	175	166	63%				7	175	166	2,751	2,613	63%
Rockledge	95%	1,387	1,691	1,606	3	75	71	83%				3	75	71	1,766	1,677	83%
Satellite	95%	1,360	1,580	1,501	1	25	24	89%				1	25	24	1,605	1,525	89%
Titusville	95%	1,331	1,970	1,872				71%							1,970	1,872	71%
Viera	95%	2,018	2,246	2,134	6	150	143	89%				6	150	143	2,396	2,277	89%

School District Group Totals	Elementary	35,335	39,527	39,527	145	3,014	3,014	83%	3	66	66	148	3,080	3,080	42,607	42,607	83%
	Middle	7,617	10,911	9,820	8	183	165	76%	-	-	-	8	183	165	11,094	9,985	76%
	Jr/Sr High	6,171	7,297	6,568	38	876	789	84%	2	50	45	40	926	834	8,223	7,402	83%
	High	17,865	22,828	21,687	29	725	690	80%	-	-	-	29	725	690	23,553	22,377	80%

School District Grand Totals	66,988	80,563	77,602	220	4,798	4,658	81%	5	116	111	225	4,914	4,769	85,477	82,371	81%
-------------------------------------	---------------	---------------	---------------	------------	--------------	--------------	------------	----------	------------	------------	------------	--------------	--------------	---------------	---------------	------------

Notes:

- Note 1: Utilization Factors are established by the Florida Department of Education's (FDOE) State Requirements for Educational Facilities (SREF).
- Note 2: Projected Student Membership figures based on Finance 2015-16 Budget Projections combined with Growth Management Projections for 2016-17 to 2019-20 (updated 1/26/2015).
- Note 3: Permanent and Relocatable Student Stations are based on the information contained in the FDOE Florida Inventory of School Houses (FISH) database on 1/22/15
- Note 4: Factored Capacity is calculated by multiplying the Student Stations by the Utilization Factor. Permanent and Relocatable Factored Capacities are calculated independently.
- Note 5: Total Capacity in Use is calculated by dividing the Projected Student Membership by the Total of Permanent Factored Capacity and Relocatable Factored Capacity.
- Note 6: Relocatable Classroom Units are based on the information contained in the FDOE Florida Inventory of School Houses (FISH) database on 1/22/15 plus the projected relocatable classroom changes for School Year 2015-16 (shown in red).
- Note 7: Relocatable Student Stations are based on the information contained in the FDOE Florida Inventory of School Houses (FISH) database on 1/22/15 plus the projected relocatable classroom changes for School Year 2015-16 (shown in red).
- Note 8: Relocatable Factored Capacity is calculated by multiplying Satisfactory Relocatable Student Stations by the Utilization Factor.
- Note 9: Totals are calculated by adding Permanent and Relocatable data.

Relocatables for School Year 2014-2015

School	Current Total	Non-Class room	Class room	Surplus	Store	DCR	1	2	3	4	5	6	7	8	9	10	11	12	13	14	15	16	17	18	19	20	21	22	23	24	25	26	27	28	29	30
Tropical Elementary																																				
Turner Elementary	2		2				T354	T355																												
University Park Elem	6		6				T320	T350	T352	T358	T403	T406																								
Viera High	6		6				T232	T234	T237	T239	T252	T255																								
West Melbourne Elementary																																				
West Shore Jr./Sr. High	11	2	7		2		B001	B948	N016	T319	T439	T446	T447	T448	T449	N028	N156																			
Westside Elementary	1		1				T108																													
Williams Elementary	9		4	5			N056	N163	N181	N245	N073	N102	N128	N152	N155																					

SCHOOL TOTALS 349 12 220 75 39 3

520 COMPOUND	11	11					B002	N094	N211	N503	N905	N910	N911	N930	N946	N947	T152																			
Clearlake																																				
Cuyler																																				
ESF																																				
Gardendale	1				1		N246																													
Gibson Field	1	1					N029																													
Plant Ops and Maint	16	14			2		N050	N134	N176	N193	N199	N213	N242	N505	N908	N912	N918	N927	T001	T020	N130	T013														
McLarty Stadium	4	3			1		N151	N179	N259	N944																										
Old Creel Sup/ Maint	2	2					N248	T017																												
Manatee Bus																																				
Melbourne Bus Compound																																				
North Area Transportation	10	10					LL16	N007	N036	N081	N185	N225	N907	N909	N914	N940																				
Riverview																																				
Satellite Bus Compound	5	5					N141	N184	N231	N515	N953																									
South Lake	2			2			T200	T201																												
South Pine Grove																																				
West Melbourne Maint	6	6					LL01	N065	N167	N916	N936	T007																								
Westside Bus Compound	2	2					N920	N923																												
Whispering Hills																																				

NON-SCHOOL TOTALS 60 54 0 2 1 3

GRAND TOTALS 409 66 220 77 40 6

0	Classroom Rated	0	Non-Classroom	0	Surplus Locked in Place	0	Board Approved DCR
0	Storage	B	Restroom	B	Surplus Restroom	0	DCR'ed /OUT OF FISH/Awaiting Removal

Rick Bellanger
3/4/2015

OWNED UNITS	
N	= 20x36 (720 gsf/ 683 nsf) TYPE VI (Standard)
T	= 13x50 (750 gsf/ 620 nsf) TYPE VI (Have Axles)
T100	= 24x36 (846 gsf/ 782 nsf) TYPE IV (Purchased 2002 - 2003)
T200-500	= 24x36 (846 gsf/ 788 nsf) TYPE IV (Purchased 2003 - 2006)
LL	= 20x36 (720 gsf/ 683 nsf) TYPE VI (Mansard Roofs/ SBBC Built)
S	= 24x36 State Plans (846 gsf/ 788 nsf) TYPE IV
S200	= 24x36 Stackables (846 gsf/ 788 nsf) TYPE IV (Purchased 2006)
B	= Bathroom Units TYPE IV (Purchased 2006)



Section 7

Student Enrollment Data

- A. Brevard Public Schools Feeder System**
 - 1. 2014-2015 Feeder System**
 - 2. 2015-2016 Feeder System**
- B. Membership 1955-2014/Projection 2015-2023 (Chart)**
- C. Actual/Projection Support Data**

Feeder System

For 2014 - 2015 School Year Enrollment Projections

ASTRONAUT	MADISON-100%	Apollo 5% Mims 92% Oak Park 100% Pinewood 100%
-----------	--------------	---

TITUSVILLE	JACKSON-100%	Apollo 95% Coquina 100% Imperial Estates 100% Mims 8%
------------	--------------	--

SPACE COAST JR/SR HIGH		Atlantis 100% Challenger 7 100% Enterprise 100%
------------------------	--	---

COCOA JR/SR HIGH		Cambridge 100% Endeavour 67% Fairgen 100% Saturn 75%
------------------	--	---

MERRITT ISLAND	JEFFERSON-100%	Audubon 100% Carroll 100% Mila 100% Tropical 88%
----------------	----------------	---

ROCKLEDGE	KENNEDY-52%	Andersen 100% Endeavour 3% Golfview 69% Manatee 89% Quest 62% Saturn 3% Williams 21%
	MCNAIR-75%	Endeavour 31% Golfview 31% Manatee 11% Saturn 22% Tropical 12% Williams 79%

EAU GALLIE	JOHNSON-82%	Creel 94% Croton 100% Harbor City 10% Longleaf 100% Sabal 100% Sherwood 75%
	CENTRAL-6%	Discovery 100% Jupiter 65% Lockmar 67% McAuliffe 68% Meadowlane 91% Roy Allen 100% University Park 9%
	HOOVER-5%	Gemini 100% Harbor City 81% Indialantic 100% Ocean Breeze 70% University Park 10%

Schools of Choice Outside the Feeder System		
Freedom 7 Elementary		
Robert Lewis Stevenson Elementary		
West Melbourne Elementary		
EDGEWOOD JR/SR HIGH		
WEST SHORE JR/SR HIGH		

VIERA	DELAURA-39%	Creel 6% Holland 100% Ocean Breeze 30% Quest 38% Roosevelt 31% Sea Park 100% Sherwood 25% Suntree 100% Surfside 100%
	JOHNSON-18%	Creel 94% Croton 100% Harbor City 10% Longleaf 100% Sabal 100% Sherwood 75%
	KENNEDY - 48%	Andersen 100% Endeavour 3% Golfview 69% Manatee 89% Quest 62% Saturn 3% Williams 21%
	MCNAIR-25%	Endeavour 31% Golfview 31% Manatee 11% Saturn 22% Tropical 12% Williams 79%

SATELLITE	DELAURA-61%	Creel 6% Holland 100% Ocean Breeze 30% Quest 38% Roosevelt 31% Sea Park 100% Sherwood 25% Suntree 100% Surfside 100%
	HOOVER-20%	Gemini 100% Harbor City 81% Indialantic 100% Ocean Breeze 70% University Park 10%

BAYSIDE	SOUTHWEST-64%	Columbia 87% Jupiter 35% Lockmar 33% McAuliffe 32% Port Malabar 6% Sunrise 87% Turner 99% Westside 100%
	STONE - 6%	Columbia 13% Harbor City 9% Meadowlane 9% Palm Bay Elem 100% Port Malabar 94% Riviera 100% Sunrise 13% Turner 1% University Park 82%

COCOA BEACH JR/SR HIGH	Cape View 100% Roosevelt 69%
------------------------	---------------------------------

PALM BAY	STONE - 77%	Columbia 13% Harbor City 9% Meadowlane 9% Palm Bay Elem 100% Port Malabar 94% Riviera 100% Sunrise 13% Turner 1% University Park 82%
	SOUTHWEST-17%	Columbia 87% Jupiter 35% Lockmar 33% McAuliffe 32% Port Malabar 6% Sunrise 87% Turner 99% Westside 100%
	CENTRAL - 6%	Discovery 100% Jupiter 65% Lockmar 67% McAuliffe 68% Meadowlane 91% Roy Allen 100% University Park 9%

HERITAGE	CENTRAL-51%	Discovery 100% Jupiter 65% Lockmar 67% McAuliffe 68% Meadowlane 91% Roy Allen 100% University Park 9%
	SOUTHWEST-18%	Columbia 87% Jupiter 35% Lockmar 33% McAuliffe 32% Port Malabar 6% Sunrise 87% Turner 99% Westside 100%

MELBOURNE	HOOVER-74%	Gemini 100% Harbor City 81% Indialantic 100% Ocean Breeze 70% University Park 10%
	CENTRAL-37%	Discovery 100% Jupiter 65% Lockmar 67% McAuliffe 68% Meadowlane 91% Roy Allen 100% University Park 9%
	STONE-17%	Columbia 13% Harbor City 9% Meadowlane 9% Palm Bay Elem 100% Port Malabar 94% Riviera 100% Sunrise 13% Turner 1% University Park 82%

Feeder System

For 2015 - 2016 Projected School Year Enrollment Projections

ASTRONAUT	MADISON 100%	Apollo 5% Mims 93% Oak Park 100% Pinewood 100%
-----------	--------------	---

TITUSVILLE	JACKSON 100%	Apollo 95% Coquina 100% Imperial Estates 100% Mims 7%
------------	--------------	--

SPACE COAST JR/SR HIGH	Atlantis 100% Challenger 7 100% Enterprise 100%
------------------------	---

COCOA JR/SR HIGH	Cambridge 100% Endeavour 57% Fairglen 100% Saturn 83%
------------------	--

MERRITT ISLAND	JEFFERSON 100%	Audubon 100% Carroll 100% Mila 100% Tropical 93%
----------------	----------------	---

ROCKLEDGE	KENNEDY 49%	Andersen 100% Endeavour 4% Golfview 67% Manatee 90% Quest 62% Saturn 2% Williams 14%
	MCNAIR 77%	Endeavour 39% Golfview 33% Manatee 10% Saturn 16% Tropical 7% Williams 86%

EAU GALLIE	JOHNSON 84%	Creel 91% Croton 100% Harbor City 13% Longleaf 100% Sabal 100% Sherwood 77%
	CENTRAL 7%	Discovery 100% Jupiter 61% Lockmar 66% McAuliffe 63% Meadowlane 93% Roy Allen 100% University Park 13%
	HOOVER 6%	Gemini 100% Harbor City 82% Indialantic 100% Ocean Breeze 65% University Park 7%

Schools of Choice Outside the Feeder System	
Freedom 7 Elementary	
Robert Lewis Stevenson Elementary	
West Melbourne Elementary	
EDGEWOOD JR/SR HIGH	
WEST SHORE JR/SR HIGH	

VIERA	DELAURA 43%	Creel 9% Holland 100% Ocean Breeze 35% Quest 38% Roosevelt 23% Sea Park 100% Sherwood 23% Suntree 100% Surfside 100%
	JOHNSON 16%	Creel 91% Croton 100% Harbor City 13% Longleaf 100% Sabal 100% Sherwood 77%
	KENNEDY 51%	Andersen 100% Endeavour 4% Golfview 67% Manatee 90% Quest 62% Saturn 2% Williams 14%
	MCNAIR 23%	Endeavour 39% Golfview 33% Manatee 10% Saturn 16% Tropical 7% Williams 86%

SATELLITE	DELAURA 57%	Creel 9% Holland 100% Ocean Breeze 35% Quest 38% Roosevelt 23% Sea Park 100% Sherwood 23% Suntree 100% Surfside 100%
	HOOVER 18%	Gemini 100% Harbor City 82% Indialantic 100% Ocean Breeze 65% University Park 7%

BAYSIDE	SOUTHWEST 65%	Columbia 86% Jupiter 39% Lockmar 34% McAuliffe 37% Port Malabar 2% Sunrise 90% Turner 99% Westside 100%
	STONE 5%	Columbia 14% Harbor City 5% Meadowlane 7% Palm Bay Elem 100% Port Malabar 98% Riviera 100% Sunrise 10% Turner 1% University Park 80%

COCOA BEACH JR/SR HIGH	Cape View 100% Roosevelt 77%
------------------------	---------------------------------

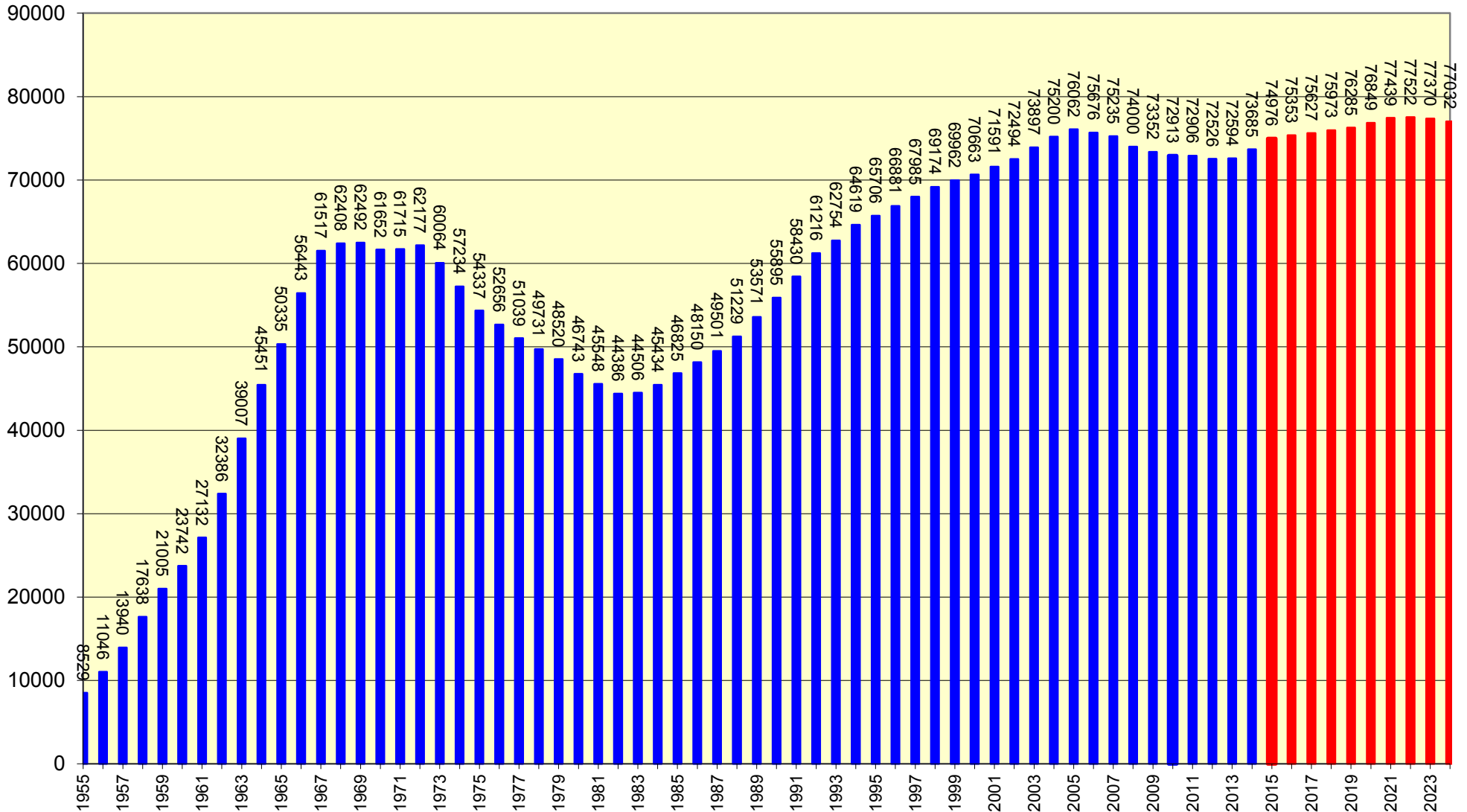
PALM BAY	STONE 78%	Columbia 14% Harbor City 5% Meadowlane 7% Palm Bay Elem 100% Port Malabar 98% Riviera 100% Sunrise 10% Turner 1% University Park 80%
	SOUTHWEST 16%	Columbia 86% Jupiter 39% Lockmar 34% McAuliffe 37% Port Malabar 2% Sunrise 90% Turner 99% Westside 100%
	CENTRAL 5%	Discovery 100% Jupiter 61% Lockmar 66% McAuliffe 63% Meadowlane 93% Roy Allen 100% University Park 13%

HERITAGE	CENTRAL 53%	Discovery 100% Jupiter 61% Lockmar 66% McAuliffe 63% Meadowlane 93% Roy Allen 100% University Park 13%
	SOUTHWEST 19%	Columbia 86% Jupiter 39% Lockmar 34% McAuliffe 37% Port Malabar 2% Sunrise 90% Turner 99% Westside 100%

MELBOURNE	HOOVER 76%	Gemini 100% Harbor City 82% Indialantic 100% Ocean Breeze 65% University Park 7%
	CENTRAL 35%	Discovery 100% Jupiter 61% Lockmar 66% McAuliffe 63% Meadowlane 93% Roy Allen 100% University Park 13%
	STONE 18%	Columbia 14% Harbor City 5% Meadowlane 7% Palm Bay Elem 100% Port Malabar 98% Riviera 100% Sunrise 10% Turner 1% University Park 80%

Total Public School Membership 1959 - 2014

Projected Membership Fall 2015 to 2024



Membership Projections: Combined BPS Finance and Facilities

Students in Brevard County Public Schools

Actual Students for School Years 2004 - 2014

Projected Students for 2015-16 -- 2019-20

School	Actual Membership for Fall of Year											Projected Student Membership				
	2004	2005	2006	2007	2008	2009	2010	2011	2012	2013	2014	2015	2016	2017	2018	2019
South Area																
Allen	742	775	819	768	706	665	545	504	577	595	623	621	632	623	633	630
Columbia	642	620	581	553	601	550	610	705	693	615	570	570	554	549	518	505
Discovery	938	965	960	1,031	998	939	719	744	689	720	709	714	710	701	675	656
Gemini	642	602	593	588	607	631	610	564	536	510	503	478	450	420	432	428
Harbor City	491	463	415	465	430	471	437	441	440	451	400	400	393	379	383	369
Indialantic	799	818	785	764	745	779	755	725	744	756	762	769	754	731	731	686
Jupiter	794	791	792	851	824	806	719	793	843	795	844	850	889	915	922	907
Lockmar	866	759	746	713	748	787	695	734	781	770	786	773	777	777	769	757
McAuliffe	868	878	917	920	913	824	762	763	780	769	741	723	719	726	735	703
Meadowlane Intermediate				519	505	556	973	1,076	900	890	929	977	1,030	1,044	1,048	1,020
Meadowlane Primary	893	961	975	694	700	725	752	778	737	779	780	692	684	677	666	661
Palm Bay	715	689	706	716	696	702	803	816	848	850	859	854	871	876	889	887
Port Malabar	826	773	769	742	743	715	655	687	752	755	772	770	788	797	815	793
Riviera	701	631	626	564	587	575	644	709	758	727	715	727	763	780	782	767
Sunrise			550	726	770	846	748	777	756	727	846	848	872	883	872	866
Turner	682	745	693	765	734	696	664	741	772	715	760	754	788	811	860	879
University Park	533	559	597	553	565	517	518	585	628	675	634	652	653	658	666	628
West Melbourne	410	415	411	414	414	414	431	447	545	551	547	552	552	552	552	552
Westside	1,153	1,245	773	825	844	839	779	821	756	803	769	779	818	836	843	832
Central	1,353	1,234	1,172	1,003	966	969	1,096	1,270	1,263	1,278	1,237	1,154	1,159	1,227	1,302	1,403
Hoover	550	512	481	467	449	438	519	543	568	554	564	542	546	612	584	600
Southwest	1,416	1,439	1,463	1,428	1,372	1,352	1,016	1,023	993	966	905	910	957	964	981	1,051
Stone	689	726	683	665	665	662	754	774	802	816	784	792	799	853	900	970
West Shore	953	955	940	955	961	967	961	964	955	961	957	962	962	962	962	962
Bayside	2,232	2,380	2,580	2,752	2,760	2,195	1,930	1,665	1,606	1,628	1,643	1,647	1,531	1,413	1,346	1,375
Heritage						932	1,327	1,759	1,797	1,795	1,825	1,856	1,858	1,750	1,669	1,637
Melbourne	2,325	2,291	2,342	2,274	2,190	1,981	1,997	1,967	1,945	2,013	2,131	2,181	2,278	2,240	2,266	2,346
Palm Bay	2,605	2,621	2,577	2,529	2,324	2,108	1,893	1,739	1,587	1,555	1,599	1,641	1,624	1,628	1,558	1,591
Totals: South Area	24,818	24,847	24,946	25,244	24,817	24,641	24,312	25,114	25,051	25,019	25,194	25,188	25,411	25,384	25,359	25,461
South Area Group Totals	12,695	12,689	12,708	13,171	13,130	13,037	12,819	13,410	13,535	13,453	13,549	13,503	13,697	13,735	13,791	13,526
	4,008	3,911	3,799	3,563	3,452	3,421	3,385	3,610	3,626	3,614	3,490	3,398	3,461	3,656	3,767	4,024
	953	955	940	955	961	967	961	964	955	961	957	962	962	962	962	962
	7,162	7,292	7,499	7,555	7,274	7,216	7,147	7,130	6,935	6,991	7,198	7,325	7,291	7,031	6,839	6,949

Students in Brevard County Public Schools

Actual Students for School Years 2004 - 2014

Projected Students for 2015-16 -- 2019-20

School	Actual Membership for Fall of Year											Projected Student Membership				
	2004	2005	2006	2007	2008	2009	2010	2011	2012	2013	2014	2015	2016	2017	2018	2019
Central Area																
Andersen	683	638	638	640	696	717	756	738	771	751	714	690	712	734	766	786
Cambridge	614	612	570	502	510	536	543	564	583	620	637	650	642	621	602	574
Creel	948	989	873	819	760	759	930	900	946	941	972	978	979	978	1,006	1,002
Croton	601	588	568	537	515	516	585	597	629	676	653	653	639	635	646	621
Endeavour	545	531	554	551	588	581	747	798	843	816	808	818	869	904	915	901
Fairglen	769	818	769	716	714	732	694	667	679	714	689	686	679	669	660	659
Gardendale	634	608	524	487	474	447	430	449	492							
Golfview	585	584	607	635	634	630	653	661	640	648	675	691	710	704	701	717
Holland	439	424	415	418	416	378	413	420	394	415	427	430	431	439	465	473
Longleaf	821	749	683	696	686	705	737	708	654	609	599	592	557	531	533	508
Manatee	859	826	832	827	967	1,018	874	911	940	850	836	845	855	843	848	837
Ocean Breeze	607	622	571	561	547	536	555	560	545	531	510	513	525	552	562	548
Quest	470	646	740	858	855	849	857	842	861	711	774	783	838	877	871	857
Sabal	543	574	571	573	587	573	602	580	601	609	585	582	579	577	575	579
Saturn	751	767	731	740	702	736	792	797	829	738	748	740	748	754	741	748
Sea Park	391	353	293	301	300	305	310	354	393	321	343	356	351	357	365	359
Sherwood	701	698	667	638	608	594	524	515	515	530	544	544	554	573	586	587
Suntree	905	862	815	806	828	827	679	697	644	622	629	629	602	590	584	573
Surfside	478	463	419	403	398	437	400	391	383	389	418	438	445	435	427	408
Williams	792	805	805	812	805	796	583	602	603	552	538	519	505	495	486	487
Clearlake	536	497	434	418	449	405	396	422	470							
DeLaura	824	761	703	689	711	667	651	706	803	741	699	700	727	775	779	834
Johnson	1,044	1,011	1,012	962	946	894	860	836	794	796	787	785	847	863	844	876
Kennedy	670	644	626	636	677	712	740	718	643	614	608	596	662	723	714	723
McNair	408	447	490	572	510	471	488	558	563	494	457	473	501	533	551	545
Cocoa	1,387	1,317	1,272	1,193	1,114	1,434	1,366	1,382	1,436	1,458	1,531	1,634	1,784	1,879	1,995	2,108
Eau Gallie	2,420	2,390	2,081	1,953	1,736	1,694	1,654	1,599	1,675	1,682	1,714	1,711	1,755	1,779	1,854	1,925
Rockledge	1,728	1,786	1,559	1,421	1,238	1,204	1,242	1,269	1,377	1,372	1,374	1,387	1,524	1,573	1,648	1,698
Satellite	2,100	2,057	1,669	1,450	1,259	1,200	1,165	1,169	1,272	1,290	1,319	1,360	1,330	1,287	1,305	1,339
Viera			918	1,424	1,941	2,026	2,117	2,237	2,022	1,976	2,032	2,018	1,979	1,994	2,023	2,135
Totals: Central Area	24,253	24,067	23,409	23,238	23,171	22,974	22,947	23,225	24,000	22,466	22,620	22,801	23,329	23,674	24,052	24,407
Central Area Group Totals	13,136	13,157	12,645	12,520	12,590	12,672	12,664	12,751	12,945	12,043	12,099	12,137	12,220	12,268	12,339	12,224
	2,946	2,863	2,831	2,859	2,844	2,744	2,739	2,818	2,803	2,645	2,551	2,554	2,737	2,894	2,888	2,978
	1,387	1,317	1,272	1,193	1,114	1,434	1,366	1,382	1,436	1,458	1,531	1,634	1,784	1,879	1,995	2,108
	6,248	6,233	6,227	6,248	6,174	6,124	6,178	6,274	6,346	6,320	6,439	6,476	6,588	6,633	6,830	7,097

Students in Brevard County Public Schools

Actual Students for School Years 2004 - 2014

Projected Students for 2015-16 -- 2019-20

School	Actual Membership for Fall of Year											Projected Student Membership				
	2004	2005	2006	2007	2008	2009	2010	2011	2012	2013	2014	2015	2016	2017	2018	2019
North Area																
Apollo	906	852	730	722	711	761	746	733	710	803	766	768	771	767	770	774
Atlantis	800	816	778	765	762	687	639	640	614	568	618	613	596	574	561	526
Audubon	682	672	657	635	574	475	496	532	473	670	646	650	652	652	637	622
Cape View	388	363	369	376	363	361	387	370	379	372	382	380	404	441	479	488
Carroll	910	915	886	845	789	742	670	675	657	633	620	620	618	623	620	610
Challenger 7	606	549	525	494	496	489	483	500	486	508	480	477	474	469	457	446
Coquina	455	459	449	439	405	431	468	520	555	570	569	572	571	569	575	565
Enterprise	910	897	867	904	831	769	680	675	607	569	539	529	505	476	439	407
Freedom 7	431	425	420	412	414	413	403	414	410	404	407	414	414	414	414	414
Imperial Estates	559	613	668	682	646	653	680	630	641	652	664	666	659	648	638	596
Mila	441	407	403	365	384	420	512	516	517	481	496	487	503	501	497	465
Mims	612	615	576	531	522	489	468	448	479	602	582	600	589	559	522	470
Oak Park	831	764	744	750	705	664	646	609	686	825	847	852	837	821	787	745
Pinewood	382	413	433	421	430	405	400	353	379	431	442	452	455	443	436	407
Riverview Elementary	439	531	497	470	453	405	320	297								
Roosevelt	514	517	514	462	408	413	443	439	414	409	371	375	378	370	371	350
South Lake Elementary	452	499	471	454	472	406	388	399	507							
Stevenson	270	259	261	427	449	464	480	484	489	485	483	490	490	490	490	490
Tropical	853	857	819	760	740	712	690	668	643	674	736	750	771	759	755	744
Jackson	677	643	686	656	590	636	632	623	568	538	595	585	605	604	625	649
Jefferson	711	734	712	699	689	673	685	643	623	643	651	610	577	560	610	667
Madison	710	688	665	660	586	579	548	484	497	514	470	470	479	500	520	551
Cocoa Beach	1,504	1,543	1,551	1,528	1,470	1,402	1,383	1,389	1,246	1,164	1,127	1,120	1,120	1,120	1,120	1,120
Edgewood	680	807	952	946	943	948	944	942	930	940	941	950	950	950	950	950
Space Coast	1,844	2,171	2,168	2,161	1,962	1,833	1,742	1,650	1,552	1,498	1,528	1,505	1,451	1,435	1,407	1,408
Astronaut	1,578	1,482	1,404	1,382	1,309	1,228	1,153	1,171	1,128	1,144	1,137	1,120	1,066	997	938	934
Merritt Island	1,764	1,697	1,590	1,569	1,545	1,505	1,483	1,508	1,501	1,499	1,594	1,613	1,624	1,627	1,562	1,515
Titusville	1,770	1,590	1,567	1,482	1,398	1,425	1,391	1,386	1,282	1,322	1,326	1,331	1,383	1,423	1,491	1,497
Totals: North Area	22,679	22,778	22,362	21,997	21,046	20,388	19,960	19,698	18,973	18,918	19,017	18,999	18,942	18,792	18,671	18,410
North Area Group Totals	11,441	11,423	11,067	10,914	10,554	10,159	9,999	9,902	9,646	9,656	9,648	9,695	9,687	9,576	9,448	9,119
	2,098	2,065	2,063	2,015	1,865	1,888	1,865	1,750	1,688	1,695	1,716	1,665	1,661	1,664	1,755	1,867
	4,028	4,521	4,671	4,635	4,375	4,183	4,069	3,981	3,728	3,602	3,596	3,575	3,521	3,505	3,477	3,478
	5,112	4,769	4,561	4,433	4,252	4,158	4,027	4,065	3,911	3,965	4,057	4,064	4,073	4,047	3,991	3,946

Students in Brevard County Public Schools

Actual Students for School Years 2004 - 2014

Projected Students for 2015-16 -- 2019-20

School	Actual Membership for Fall of Year											Projected Student Membership				
	2004	2005	2006	2007	2008	2009	2010	2011	2012	2013	2014	2015	2016	2017	2018	2019
School District Group Totals	37,272	37,269	36,420	36,605	36,274	35,868	35,482	36,063	36,126	35,152	35,296	35,335	35,604	35,579	35,578	34,869
	9,052	8,839	8,693	8,437	8,161	8,053	7,989	8,178	8,117	7,954	7,757	7,617	7,859	8,214	8,410	8,869
	6,368	6,793	6,883	6,783	6,450	6,584	6,396	6,327	6,119	6,021	6,084	6,171	6,267	6,346	6,434	6,548
	18,522	18,294	18,287	18,236	17,700	17,498	17,352	17,469	17,192	17,276	17,694	17,865	17,952	17,711	17,660	17,992
School District Grand Totals	71,750	71,692	70,717	70,479	69,034	68,003	67,219	68,037	68,024	66,403	66,831	66,988	67,682	67,850	68,082	68,278
District-Owned School Totals	71,750	71,692	70,717	70,479	69,034	68,003	67,219	68,037	68,024	66,403	66,831	66,988	67,682	67,850	68,082	68,278
Year-to-Year Change		(58)	(975)	(238)	(1,445)	(1,031)	(784)	818	(13)	(1,634)	(1,193)	157	694	168	232	196
Percentage Change		-0.08%	-1.36%	-0.34%	-2.05%	-1.49%	-1.15%	1.22%	-0.02%	-2.40%	-1.75%	0.23%	1.04%	0.25%	0.34%	0.29%

Students in Brevard County Public Schools

Actual Students for School Years 2004 - 2014

Projected Students for 2015-16 -- 2019-20

School	Actual Membership for Fall of Year											Projected Student Membership				
	2004	2005	2006	2007	2008	2009	2010	2011	2012	2013	2014	2015	2016	2017	2018	2019
2013-14 Special Schools and Centers																
NORTH/CENTRAL ALC	54	66	52	33	47	66	43	34	54	57	69	60	61	65	65	65
SOUTH ALC	92	121	103	97	77	91	108	70	61	60	65	75	74	74	74	74
NORTH ALC	47	45	43	32	41	31	31	40	32							
BREVARD COUNTY JAIL									6	5	5	5	5	5	5	5
BREVARD VIRTUAL INSTRUCTION						41	100	132	148	131	128	150	144	138	138	132
CENTER FOR DRUG FREE LIVING	18	21	19	29	27	30	30	27	26	25	28	27	27	27	27	27
CROSSWINDS	8	12	17	9	13	11	6	8								
DETENTION CENTER	68	65	43	59	44	35	24	28	13	29	37	28	29	29	29	31
DEVEREUX HOSPITAL	58	35	51	37	29	39	40	39	36	43	63	75	77	78	78	81
DISTRICT MIGRANT		2	2													
FIELDSTON PREPARATORY SCHL	72	85	69	62	59	71	73	76	62	57	106	106	106	106	106	109
FRANCIS WALKER HALFWAY HOUSE	19	21	24	30	28	30	29	28	18	20	27	24	23	23	23	23
INFANTS & TODDLERS	125	155	166	252	369	493	427	368	290	228	273	273	273	273	273	273
HORACE MANN ACADEMY	141	161	126	119	117	114	112	131	119	111						
HOME EDUCATION	20	48	27	28	51	39	50	29	60	58	73	57	58	62	62	63
MCKAY SCHOLARSHIPS	437	501	544	751	848	895	993	1,081	1,237	1,293	1,310	1,320	1,355	1,381	1,381	1,385
OUTWARD BOUND	17	20	13	20	11	14	21	15	18	8	13	15	14	14	14	14
PROJECT SEARCH								27	28	19	42	30	30	30	30	30
RIVERDALE COUNTRY SCHL	132	149	161	144	119	116	120	116	115	105	141	141	141	142	142	143
RIVERVIEW SCHOOL									66	110	133	153	153	153	153	153
SPACE COAST MARINE	25	31	33	34	37	33	33	34	20							
SOUTH AREA HEAD START									33	33	33	34	34	34	34	34
MELBOURNE CENTER FOR PERSONAL GROWTH										26	28	27	27	25	23	23
Totals: 2013-14 Special Schools and Centers	1,333	1,536	1,493	1,736	1,917	2,149	2,240	2,283	2,442	2,418	2,574	2,600	2,631	2,659	2,657	2,665

Students in Brevard County Public Schools

Actual Students for School Years 2004 - 2014

Projected Students for 2015-16 -- 2019-20

School	Actual Membership for Fall of Year											Projected Student Membership				
	2004	2005	2006	2007	2008	2009	2010	2011	2012	2013	2014	2015	2016	2017	2018	2019
2013-14 Public Charter Schools																
CAMPUS CHARTER	169	224	171	154	132	125	152	138	140	142	134	140	136	134	138	140
EDUC. HORIZONS W. MELBOURNE	73	80	72	60	73	68	93	99	92	97	100	110	110	111	112	115
EMMA JEWEL ACADEMY										202	300	380	420	420	420	420
IMAGINE SCHOOLS					407	628	673	402	218	174	217	264	218	190	176	169
ODYSSEY	367	517	508	522	544	550	565	623	762	911	940	990	1,049	1,123	1,198	1,287
ODYSSEY PREP CHARTER ACADEMY										179	234	268	316	346	393	412
PALM BAY ACADEMY	221	269	369	403	544	527	509	580	518	559	621	618	630	630	630	630
PALM BAY MUNICIPAL K-8			779	996	746	646	734									
PALM BAY MUNICIPAL HS						16	73									
ROYAL PALM	115	125	120	186	185	195	216	253	281	334	354	364	370	371	372	373
SCULPTOR	364	395	392	399	418	445	469	491	518	531	542	546	543	545	546	548
VIERA CHARTER										644	838	900	900	900	900	900
PINEAPPLE COVE ACADEMY												348	348	348	348	348
Totals: 2013-14 Public Charter Schools	1,309	1,610	2,411	2,720	3,049	3,200	3,484	2,586	2,529	3,773	4,280	4,928	5,040	5,118	5,234	5,342



Section 8

Facilities Planning

School Board of Brevard County

FY 2015-2016 Student Accommodation Plan

Facilities Planning



Components of Facilities Planning

Introduction

The Facilities Services Planning Department is responsible for ensuring that adequate and appropriate facilities are available for the students, their teachers, administrators and support staff. The most important planning goals are to utilize existing capacity efficiently while ensuring that there are no schools over capacity.

The planning staff forecasts 1-year, 5-year, 10-year and 20-year plans for Public School facilities. Some of these forecasts are required by Florida Statute and must be submitted for approval to the Florida Department of Education (FDOE). Others, in particular the Student Accommodation Plan (SAP), are not required by the FDOE but are an integral part of the District's planning process.

A. Educational Plant Survey (EPS)

The EPS is a document containing all of the facility improvements (new construction and remodeling/renovation of existing space) that have been approved by the Florida Department of Education (FDOE). It is also the basis of the District's annual Five Year Facilities Work Plan. The purpose of the EPS is to document the facility needs of the School District on a school-by-school basis and to identify which capital projects may be initiated. By statute, a new EPS supersedes all previous Surveys. Recommendations in the previous Survey that have not been implemented are not eligible for the expenditure of state capital outlay funds unless recommended in the new Survey. The EPS must be prepared and submitted for approval every five years at a minimum, but intermediate updates, called "spot surveys" may be submitted at any time in order to obtain FDOE approvals for changes to the plan. Brevard County's current EPS was approved by the FDOE on January 7, 2011 with Spot Survey #1 approved on November 5, 2013 and Spot Survey #2 approved on February 19, 2014. It is important to note that facility improvements must be contained in the approved EPS in order to finance the improvement with any "state" funds (Public Education Capital Outlay or PECO, and 1.5-mil local tax dollars). Improvements funded with locally generated revenue – impact fees, sales tax, local bonds – do not have to be in the approved EPS.

School Board of Brevard County

FY 2015-2016 Student Accommodation Plan

Facilities Planning

B. Five Year District Facilities Work Plan

The Five Year District Facilities Work Plan, often referred to as the “Five Year Plan”, must be updated and submitted annually to the FDOE for approval by October 1 of each year. This document includes all of the facility improvements (new construction, remodeling/renovation of existing space and maintenance) that the District plans to undertake in the next five (5) years, with long range projections for ten (10) years and twenty (20) years. All facility improvements contained in the Five Year Work Plan must be included in the currently-approved EPS in order to finance the improvement with state funds. Again, improvements funded with locally generated revenue (impact fees, sales tax, local bonds) do not have to be contained in the approved EPS.

C. Student Accommodation Plan

The Student Accommodation Plan (SAP) is normally prepared by the Facilities Planning staff every spring, with approval by the School Board in late spring. The School Board of Brevard County has adopted this document, which compares projected student enrollment to projected school capacities, as a planning tool for the following school year. After the plan is approved, it is implemented throughout the district.

The information compiled in the preparation of this document comes from several different sources. Facilities Services, in partnership with Financial Services, provides the data related to projected student enrollment for the School District. Facilities Services provides the permanent and relocatable school capacities from the Florida Inventory of School Houses (FISH) Database. School Principals and Area Superintendents estimate their need for space to accommodate students based on the programs and membership projections for the following year. After the Senior Staff evaluates the information, recommendations are provided to the Superintendent and to the School Board for approval.

D. Student Membership Projections

Student membership projections are an essential component of facilities planning. The Membership Projection Process begins in October of each year to develop student projections for the following school year.

Financial Services develops student membership projections for the next school year based on trend analyses of cohort survival data and feeder chains. These preliminary projections are modified based on input from the School Principals and Area Superintendents, then finalized at an Enrollment Projection Management Conference. The final projections are submitted to the FDOE for budgeting purposes.

Facilities Services uses geospatial analysis of the local government development data, birth rate data, mobility rates and matriculation rates to calculate student membership projections for the next ten (10) years. Further analysis takes into account any potential redistricting or grandfathered students from previous redistricting.

School Board of Brevard County

FY 2015-2016 Student Accommodation Plan

Facilities Planning

A five year student enrollment projection is then created by using the Financial Services projections for the next school year, then indexing the Facilities Services projections for the following four years. This unified set of projections is used for all School District purposes (including FDOE reporting and school concurrency).

These projections may be modified in the spring to reflect any changes due to redistricting, but the total number of students forecast will remain the same since that figure was provided to the FDOE in December to determine the District's budget for the next fiscal year.

E. School Capacity

The determination of school capacity impacts almost every aspect of district operations including:

1. Planning of new schools and additions
2. Renovations and upgrades to existing schools
3. Establishing attendance boundaries
4. Allocation of relocatable classrooms
5. Providing classrooms for special programs such as exceptional education classes (ESE), and magnet programs

For Brevard Public Schools, capacity assessments utilize the Florida Inventory of School Houses (FISH), which is based on the Florida Department of Education (FDOE) formulas and allowances. However, other measures relative to capacity play important roles in decisions that affect facility planning. These include **Program Capacity**, **Level of Service (LOS)**, and legislative amendments such as **Class Size Reduction**.

1. **FISH Capacity:** The Florida Inventory of School Houses (FISH) is the database used by the Department of Education for all parcels, buildings, and rooms in Florida public educational facilities. FISH capacity is the number of students that may be housed in a facility at any given time, based upon the number of existing satisfactory student stations. The FISH system includes both permanent student stations and relocatable student stations.

When a school is built, its spaces are assigned a design code; each design code carries either a fixed number of student stations or a number that may vary for common areas like gymnasiums depending on the total capacity of the school. Factored Permanent FISH Capacity is the permanent capacity of the school (relocatables not included) multiplied by a "utilization factor" established by the Florida Department of Education's (FDOE) State Requirements for Educational Facilities (SREF). This reduction is essentially an adjustment for operational realities that prevent all classrooms from being used at the maximum capacity at all times during the day. Brevard Utilization Factors are:

Elementary Utilization Factor	1.00
Middle Utilization Factor	0.90
Jr./Sr. High Utilization Factor	0.90
Senior High Utilization Factor.....	0.95

School Board of Brevard County

FY 2015-2016 Student Accommodation Plan

Facilities Planning

2. **Program Capacity:** Program capacity is the “effective capacity” of a school. School program capacity is smaller than the FISH capacity because some programs will have a maximum number of students that is less than the capacity of the space in which they are held. For example, a 7th grade classroom may have 22 student stations in FISH and a factored capacity of 90%, or 20, but it may be used for an ESE program that is allowed a maximum number of 10 students. Effectively the school’s program capacity is 10 students less than its permanent capacity. If there are only 5 students in the school with that exceptionality, however, utilization of that space would be 23% or 5/22. It simply isn’t possible to fill the space with children who do not have that exceptionality. While program capacity is variable and can change regularly based on the program offerings and use of classrooms, FISH limits the number of “program-related” student stations at a given school, largely based upon total student stations. Currently, more than 20,000 K-12 students participate in special, alternative and/or supplemental education programs that are offered by Brevard Public Schools. These programs vary from gifted programs to programs for school-aged teen parents, and are created and terminated at the discretion of the School Board. The number of students in these programs, where the programs are instituted, and how they are integrated within existing spaces are key elements that must be part of the planning process.

3. **Level of Service (LOS):** Level of Service (LOS) is not a measurement of capacity, but rather the target utilization of facilities. LOS is a relatively new component in school planning, and is associated with the advent of the recent growth management legislation. The Interlocal Agreement (ILA) for Public School Facility Planning and School Concurrency provides that the School Board and local governments must work cooperatively to insure that student stations are available for students associated (concurrent) with new residential development. The 2014 ILA established the LOS for the District at 100% of FISH capacity, which is calculated by dividing enrollment by factored FISH capacity.

Errata Sheet 2015-2016 Student Accommodation Plan

Date	Sheet	Correction
4/28/2015	5-A Capacity/Enrollment Projections 2015-2016 By Area	Manatee Permanent Student Stations from 884 to 866 to match all other spreadsheets
4/28/2015	5-B Capacity/Enrollment Projections 2015-2016 By Type	Manatee Permanent Student Stations from 884 to 866 to match all other spreadsheets
4/28/2015	6-A Relocatable Classroom Changes 2015-2016 By Area	Formula correction in Total Factored Capacity to match all other spreadsheets
4/28/2015	6-B Relocatable Classroom Changes 2015-2016 By Type	Formula correction in Total Factored Capacity to match all other spreadsheets

SCHOOL BOARD OF BREVARD COUNTY

Educational Services Facility
2700 Judge Fran Jamieson Way
Viera, FL 32940-6601

SUPERINTENDENT

Dr. Brian T. Binggeli

SCHOOL BOARD MEMBERS

Amy Kneessy, Chairman
Karen Henderson, Vice Chairman
Misty Belford
John Craig
Andy Ziegler

Non-Discrimination Notice

The School Board of Brevard County, Florida does not discriminate on the basis of race, color, national origin, gender, age, disability or marital status in its educational programs, services or activities, or in its hiring or employment practices. The district also provides equal access to its facilities to the Boy Scouts and other patriotic youth groups, as required by the Boys Scout of America Equal Access Act. The School Board of Brevard County is in compliance with the Americans with Disabilities Act of 1990 (ADA) and the Amendment Act of 2008 (ADAA); the Florida Education Equity Act of 1984, Age Discrimination Act of 1967 and Section 504 of the Rehabilitation Act of 1973, Civil Rights Act of 1964 including: Title II, Title VI, and Title VII, United States Education Amendments of 1972 - Title IX, Age Discrimination in Employment Act (ADEA), Individuals with Disabilities Act (IDEA), and the Boy Scouts of America Equal Access Act. Questions, complaints, or requests for additional information regarding discrimination or harassment may be sent to the following equity coordinators:

Student/Public Equity
Mr. Robin L. Novelli
Dir. High School Programs
2700 Judge Fran Jamieson Way
Melbourne, FL 32940
(321) 631-1911, Ext. 310
Novelli.Robin@Brevardschools.org

Exceptional Education/504 Equity
Dr. Patricia Fontan
Dir. Exceptional Student Education
2700 Judge Fran Jamieson Way
Melbourne, FL 32940
(321) 631-1911 Ext. 505
Fontan.Patricia@Brevardschools.org

Employee/Job Applicant Equity
Mr. James C. Hickey IV
Dir. Human Resources & Labor Rel.
2700 Judge Fran Jamieson Way
Melbourne, FL 32940
(321) 631-1911 Ext. 265
Hickey.Jim@brevardschools.org

Reasonable accommodations are available for persons with disabilities to complete the application and/or interview process. Applicants/individuals with disabilities requesting accommodations under the Americans with Disabilities Act (ADA) may contact the Employee/Job Applicant Equity Coordinator for assistance. This publication or portions of this publication can be made available to persons with disabilities in a variety of formats, including large print, braille or audiotape. Telephone or written request should include your name, address, and telephone number. Requests should be made to Kim Parker, Exceptional Education Projects, (321) 633-1000, ext. 535, at least two (2) weeks prior to the time you need the publication.