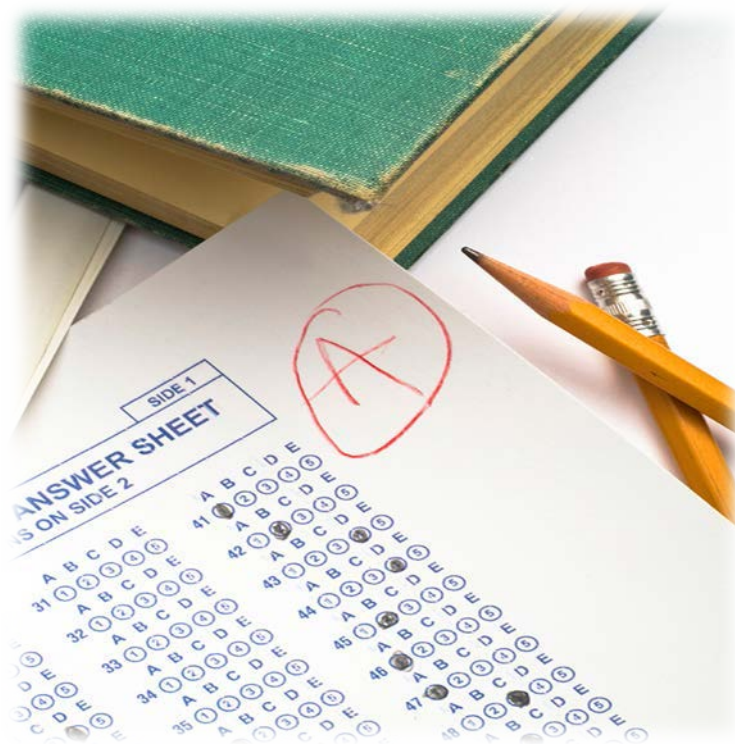


Industry Certification Results 2014 - 2015



**Brevard Public Schools
Dr. Desmond Blackburn,
Superintendent**

SCHOOL BOARD OF BREVARD COUNTY

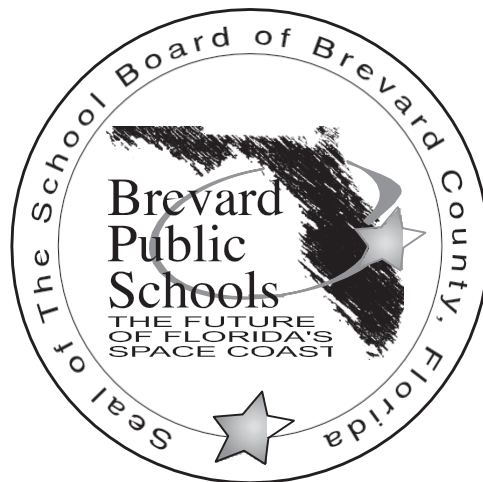
Educational Services Facility
2700 Judge Fran Jamieson Way
Viera, FL 32940-6601

SCHOOL BOARD MEMBERS

Amy Kneessy, Chairman
Karen Henderson, Vice Chairman
Misty Belford
John Craig
Andy Ziegler

SUPERINTENDENT

Dr. Desmond Blackburn



DIVISION OF CURRICULUM AND INSTRUCTION

ASSOCIATE SUPERINTENDENT

Cyndi Van Meter

**OFFICE OF CAREER &
TECHNICAL EDUCATION**

Director

Janice Scholz

Table of Contents

Introduction	1
Industry Certification Results; 5 Year Summary	3
Industry Certification District Results	7
Industry Certification Results By School	11
Adult Education.....	13
Astronaut High School.....	14
Bayside High School	15
Cocoa Beach Sr. High School.....	16
Cocoa High School.....	17
Eau Gallie High School.....	18
Edgewood Jr./Sr. High School	19
Heritage High School.....	20
Melbourne High School.....	21
Merritt Island High School	22
Palm Bay Magnet High School	23
Rockledge High School	24
Satellite High School.....	25
Space Coast Sr. High School	26
Titusville High School	27
Viera High School	28
Central Middle School.....	29
Cocoa Beach Jr. High School	30
Hoover Middle School.....	31
Jackson Middle School	32
Johnson Middle School	33
McNair Middle School.....	34
Space Coast Jr. High School.....	35
Industry Certification Results By Assessment	37
Industry Certification Results By Program	47
Industry Certification Appendix	57

This page intentionally left blank.

Introduction

Today's educational environment is heavily focused on accountability, standards and assessment. At the same time, industry is seeking assurances that job seekers have the skills required to fill their openings. At the local, state and federal levels, CTE programs are being tasked with providing students with credentials and certifications which are recognized and valued by our business and industry partners. Having a strong connection to industry, career and technical education has long understood the importance of industry recognized credential and certifications.

Brevard Strategic Plan

The BPS strategic plan includes the Outcome Indicator Outcome Indicator 1.3.3 – *The percent of BPS students enrolled in a Career and Technical Education (CTE) program of study who participate in the approved industry certification assessment and achieve a passing score on the assessment will increase annually, OR will be maintained at 91%* or above.* The CTE department has identified student industry credentials that meet the rigorous course requirements and this outcome indicator.

BPS Graduation Requirement

To ensure that every BPS graduate is postsecondary and/or workforce ready, students are required to complete a program of study which includes a minimum of 3 credits in one of the following areas:

- Approved Dual Enrollment, AP, IB, AICE or approved Honors Courses
- **or**
- Sequential CTE program of study resulting in a credential endorsed by a national, state or local industry

State Requirement – CAPE ACT Academies

At the state level, Florida Statutes require that career and professional academies be coordinated with the appropriate industry indicating that all components of the program are relevant and appropriate to prepare the student for further education and for employment in that industry. Florida Statutes further define that the State Board of Education together with the Workforce Florida, Inc. will develop and adopt rules for implementing an industry certification process, based upon the highest available national standards for specific industry certification, to ensure student skill proficiency and to address emerging labor market and industry trends.

During the 2014 Florida Legislative Session, CAPE Industry Certifications are to be delivered in career themed courses as identified by each district and to include middle schools. Additional lists of certifications have been branded and placed on lists for Middle School and ESE students. This is the CAPE Digital Tool Certificate list. The CAPE Digital Tool Certificate list will contain no more than 15 certificates limited to the areas of word processing spreadsheets' sound, motion and color presentations; digital arts; cybersecurity; and coding appropriate to middle school students. Each district must allocate at least 80 percent of the funds provided for industry certification to the program that generated the funds.

<http://www.flsenate.gov/Session/Bill/2014/0850/Amendment/796932/PDF>

State Requirement – High School Grade and Diploma Designations

Starting with SY 2009-10, Florida Statutes required a portion of the high school grade be determined by students' participation and performance in industry certifications, along with AP, IB, AICE and dual enrollment. Florida Statutes further expand the requirements for CTE industry certification by including student attainment of CTE industry certifications as one of the two Standard High School Diploma Designations.

Federal Requirements

At the federal level, the Carl D. Perkins Career and Technical Education Act was reauthorized in 2006 and required student attainment of career and technical skill proficiencies, including student achievement on technical assessments that are aligned with industry-recognized standards. They are designed to measure the extent CTE concentrators (3 credits in the same CTE program) are leaving high school with validated technical skills. The Florida DOE approves the Technical Skill Attainment List using the following criteria: requires a minimum of 150 hours instruction, is occupationally specific, is a State or federally regulated professional license, and the certifying agency is accredited.

In response to the federal requirements, future district Perkins Act federal funding to BPS includes performance measures, targets and potential sanctions regarding Technical Skill Attainment for program concentrators. The SY 2014-15 targets for BPS, established by the Florida DOE, is 90.81%.

In addition to the local, state and federal requirements for student industry certification, teachers and administrators can use assessment results to learn about student's skills as well as learn about the effectiveness of instruction and then apply that to instructional improvements. Assessment can be one of the most effective tools for increasing student achievement. By using assessment data for instructional purposes, teachers can improve program curriculum, identify instructional needs and maintain a continuous improvement process.

Focused on the new vision of Career and Technical Education, assessments are to be utilized for CTE students as they participate and/or complete their technical program of study. Assessments, while required at the federal, state and district levels, measure student understanding of both the knowledge and skills that are the foundation of the CTE program.

It is imperative that teachers and administrators maintain a positive perception of the value of technical skill attainment. Not only does it meet new local, state and federal requirements for CTE programs, assessments can provide a continuous improvement model for CTE instruction. Industry certifications can also provide business and industry with the assurance that CTE concentrators have the skills required to fill their openings; a win-win situation for all.

Industry Certification Results Five Year Summary



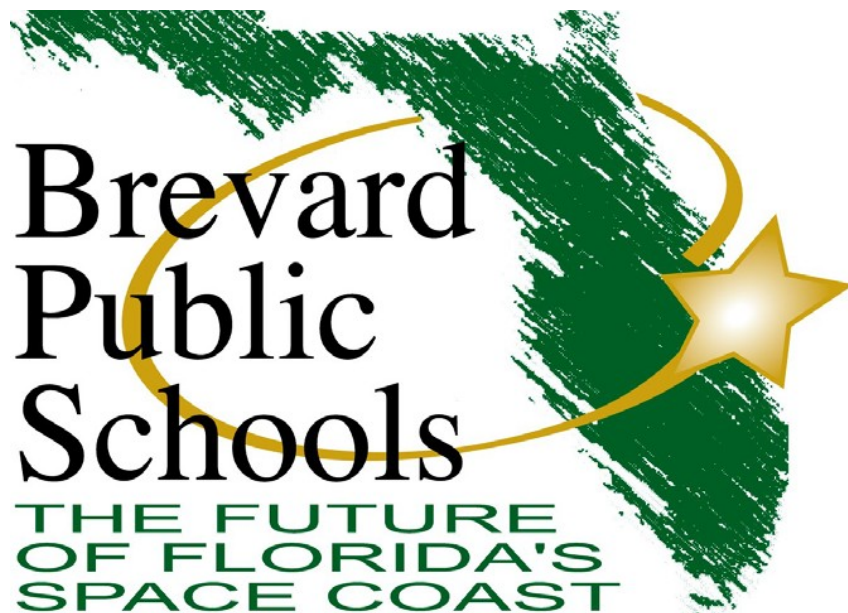
This page intentionally left blank.

2014-15 Industry Certification Results Past 5 Years

Year	# Students Identified	# Participants	# Passing	# Failing	# Completing Participants	% Participants	% Passing	% Failing	Cost of Assessments
2014-15	5,707	5,687	3,565	1,002	4,567	99.6%	78.1%	21.9%	\$305,081.44
2013-14	4,760	4,737	3,180	942	4,122	99.5%	77.2%	22.9%	\$265,949.13
2012-13	3,716	3,513	2,447	780	3,227	94.5%	75.9%	24.1%	\$224,469.77
2011-12	3,101	3,051	1,859	718	2,577	98.4%	72.1%	27.9%	\$147,739.39
2010-11	2,638	2,318	1,201	873	2,074	88.0%	52.0%	38.0%	\$116,330.44

This page intentionally left blank.

Industry Certification District Results



This page intentionally left blank.

**2014-15
District Industry Certification**

School	# Students Identified	# Participants	# Passing	# Failing	# In Progress	# Completing Participants	% Participants	% Passing	% Failing	% In Progress	% Completing Participants	Cost of Assessments & Test Prep Used
Adult Ed	4	4	4	0	0	4	100%	100%	0%	0%	100%	\$0.00
AHS	500	500	288	103	109	391	100%	74%	26%	22%	78%	\$25,463.43
BHS	559	553	416	92	45	508	99%	82%	18%	8%	92%	\$22,995.49
CBHS	66	62	35	1	26	36	94%	97%	3%	39%	58%	\$7,098.93
CHS	240	240	148	92	0	240	100%	62%	38%	0%	100%	\$14,362.62
EGHS	426	426	185	108	133	293	100%	63%	37%	31%	69%	\$16,025.66
EHS	33	33	20	2	11	22	100%	91%	9%	33%	67%	\$5,700.23
HHS	425	421	175	92	154	267	99%	66%	34%	36%	63%	\$33,225.07
MHS	516	516	343	40	133	383	100%	90%	10%	26%	74%	\$31,050.06
MIHS	320	320	239	42	39	281	100%	85%	15%	12%	88%	\$23,776.64
PBMHS	342	342	168	61	113	229	100%	73%	27%	33%	67%	\$23,134.61
RHS	299	293	213	80	0	293	98%	73%	27%	0%	100%	\$18,737.22
SCHS	286	286	176	24	86	200	100%	88%	12%	30%	70%	\$12,986.07
SHS	313	313	166	105	42	271	100%	61%	39%	13%	87%	\$24,961.58
THS	530	530	417	46	67	463	100%	90%	10%	13%	87%	\$20,939.74
VHS	695	695	419	114	162	533	100%	79%	21%	23%	77%	\$24,624.09
High School Total	5,554	5,534	3,412	1,002	1,120	4,414	99.6%	77.30%	22.70%	20.2%	79.8%	\$305,081.44
CBJR	14	14	14	0	14	14	100%	100%	0%	0%	100%	
CMS	60	60	60	0	0	60	100%	100%	0%	0%	100%	
MCMS	4	4	4	0	0	4	100%	100%	0%	0%	100%	
JOMS	2	2	2	0	0	2	100%	100%	0%	0%	100%	
JAMS	9	9	9	0	0	9	100%	100%	0%	0%	100%	
SCJR	18	18	18	0	0	18	100%	100%	0%	0%	100%	
HMS	46	46	46	0	0	46	100%	100%	0%	0%	100%	
Middle School Total	153	153	153	0	0	153	100.0%	100.00%	0.00%	0.0%	100.0%	
Total	5,707	5,687	3,565	1,002	1,120	4,567	99.6%	78.06%	21.94%	19.6%	80.3%	\$305,081.44

This page intentionally left blank.

Industry Certification Results By School



This page intentionally left blank.

2014-15 Industry Certification Adult Ed High School

School	Program	Assessment	Teacher of Record	School Grade	# Students Identified	# Participants	# In Progress	# Passing	# Failing	# Completing Participants	Funding Weights	Potential Funding \$	% Participants	% Passing	% Failing	% In Progress	% Completing Participants	Cost of Assessments & Test Prep Used	Potential Bonus FTE Calculation
Adult Ed	CCC	MOS Bundle	Owen	X	4	4	0	4	0	4	0.2	\$ 3,326.55	100%	100%	0%	0%	100%		0.8
School Total:					4	4	0	4	0	4		\$ 3,326.55	100.0%	100.0%	0.0%	0%	100%	\$0.00	0.8

2014-15 Industry Certification
Astronaut High School

School	Program	Assessment	Teacher of Record	School Grade	# Students Identified	# Participants	# In Progress	# Passing	# Failing	# Completing Participants	Funding Weights	Potential Funding \$	% Participants	% Passing	% Failing	% In Progress	% Completing Participants	Cost of Assessments & Test Prep Used	Potential Bonus FTE Calculation
AHS	Admin Office Specialist	MOS Bundle	Ament	X	50	50	38	11	1	12	0.2	\$9,148.90	100%	92%	8%	76%	24%	\$5,000.00	2.2
AHS	First Responder	EMR	Byczek	X	16	16	0	13	3	16	0.1	\$5,406.17	100%	81%	19%	0%	100%	\$2,000.00	1.3
AHS	First Responder	CPR/AED/BLS for Healthcare Providers	Byczek		39	39	0	39	0	39	0	\$0.00	100%	100%	0%	0%	100%	\$0.00	0
AHS	Construction Tech	OSHA-10	Dunlap		34	34	0	34	0	34	0	\$0.00	100%	100%	0%	0%	100%	\$175.00	0
AHS	Construction Tech	NCCER Carpentry	Dunlap	X	71	71	71	0	0	0	0.2	\$0.00	100%	0%	0%	100%	0%	\$4,307.65	0
AHS	Engineering Technology	Solidworks	Jackson	X	8	8	0	2	6	8	0.1	\$831.72	100%	25%	75%	0%	100%	\$0.00	0.2
AHS	Drafting	Autodesk - Certified User AutoCAD	Jackson	X	4	4	0	1	3	4	0.2	\$831.72	100%	25%	75%	0%	100%	\$1,888.89	0.2
AHS	Patient Care Assisting	C N A	McCain	X	36	36	0	35	1	36	0.1	\$14,555.07	100%	97%	3%	0%	100%	\$3,720.76	3.5
AHS	Patient Care Assisting	CPR/AED/BLS for Healthcare Providers	McCain		62	62	0	62	0	62	0	\$0.00	100%	100%	0%	0%	100%	\$0.00	0
AHS	Food Science	ServSafe	Morgenthal	X	108	108	0	39	69	108	0.2	\$32,437.00	100%	36%	64%	0%	100%	\$4,195.90	7.8
AHS	Digital Design	Adobe: Illustrator	Reda	X	19	19	0	18	1	19	0.1	\$7,485.46	100%	95%	5%	0%	100%	\$4,175.23	1.8
AHS	Digital Design	Adobe: InDesign	Reda	X	37	37	0	27	10	37	0.1	\$11,228.19	100%	73%	27%	0%	100%	\$0.00	2.7
AHS	Digital Design	Adobe: Photoshop	Reda	X	5	5	0	4	1	5	0.1	\$1,663.44	100%	80%	20%	0%	100%	\$0.00	0.4
AHS	Web Development	Adobe: Photoshop	Reda	X	3	3	0	0	3	3	0.1	\$0.00	100%	0%	100%	0%	100%	\$0.00	0
AHS	Web Development	Adobe: Dreamweaver	Reda	X	6	6	0	3	3	6	0.2	\$2,495.15	100%	50%	50%	0%	100%	\$0.00	0.6
AHS	Web Development	Adobe: Illustrator	Reda	X	1	1	0	0	1	1	0.1	\$0.00	100%	0%	100%	0%	100%	\$0.00	0
AHS	Web Development	Adobe: InDesign	Reda	X	1	1	0	0	1	1	0.1	\$0.00	100%	0%	100%	0%	100%	\$0.00	0
School Total:					500	500	109	288	103	391		\$86,082.81	100%	74%	26%	22%	78%	\$25,463.43	20.7

2014-15 Industry Certification Bayside High School

School	Program	Assessment	Teacher of Record	School Grade	# Students Identified	# Participants	# In Progress	# Passing	# Failing	# Completing Participants	Funding Weights	Potential Funding \$	% Participants	% Passing	% Failing	% In Progress	% Completing Participants	Cost of Assessments & Test Prep Used	Potential Bonus FTE Calculation
BHS	CommTech	Adobe:Photoshop	Arico	X	21	20	0	2	18	20	0.1	\$831.72	95%	10%	90%	0%	100%	\$4,333.82	0.2
BHS	CommTech	Adobe:Illustrator	Arico	X	4	4	0	3	1	4	0.1	\$1,247.58	100%	75%	25%	0%	100%	\$0.00	0.3
BHS	CommTech	Adobe:Indesign	Arico	X	26	22	0	12	10	22	0.1	\$4,990.31	85%	55%	45%	0%	100%	\$0.00	1.2
BHS	Culinary/Arts	SafesStaffFoodHandlerCertification	Cox	X	60	60	0	60	0	60	0	\$0.00	100%	100%	0%	0%	100%	\$1,594.16	0
BHS	Culinary/Arts	ServSafe Manager	Cox	X	41	41	0	23	18	41	0.2	\$19,129.51	100%	56%	44%	0%	100%	\$496.00	4.6
BHS	Culinary/Arts	ProStaff Certificate of Achievement	Gray	X	23	23	0	23	0	23	0.2	\$19,129.51	100%	100%	0%	0%	100%	\$0.00	4.6
BHS	Culinary/Arts	SafesStaff Food Handler Certification	Gray	X	63	63	0	63	0	63	0	\$0.00	100%	100%	0%	0%	100%	\$504.00	0
BHS	Culinary/Arts	ServSafe Manager	Gray	X	46	45	0	39	6	45	0.2	\$32,437.00	98%	87%	13%	0%	100%	\$1,710.00	7.8
BHS	Drafting	Solidworks	Kimbrell	X	26	26	0	23	3	26	0.1	\$9,564.76	100%	88%	12%	0%	100%	\$1,426.67	2.3
BHS	Engineering Technology	Solidworks	Mitchell	X	36	36	0	14	22	36	0.1	\$5,822.03	100%	39%	61%	0%	100%	\$1,426.67	1.4
BHS	Health & Wellness	CMAA	Parr	X	36	36	0	36	0	36	0.1	\$14,970.92	100%	100%	0%	0%	100%	\$4,305.00	3.6
BHS	Health & Wellness	CPR/AED/BLS for Healthcare Providers	Parr	X	35	35	0	35	0	35	0	\$0.00	100%	100%	0%	0%	100%	\$0.00	0
BHS	TV/Production	AVID	Porter	X	80	80	45	35	0	35	0.1	\$14,555.07	100%	100%	0%	56%	44%	\$1,000.00	3.5
BHS	Digital Design	Adobe:Photoshop	Soto	X	34	34	0	22	12	34	0.1	\$9,148.90	100%	65%	35%	0%	100%	\$4,239.16	2.2
BHS	Digital Design	Adobe:Illustrator	Soto	X	9	9	0	9	0	9	0.1	\$3,742.73	100%	100%	0%	0%	100%	\$0.00	0.9
BHS	Digital Design	Adobe:Indesign	Soto	X	4	4	0	3	1	4	0.1	\$1,247.58	100%	75%	25%	0%	100%	\$0.00	0.3
BHS	Patient Care Assisting	CNA	Stannard	X	15	15	0	14	1	15	0.1	\$5,822.03	100%	93%	7%	0%	100%	\$1,960.01	1.4
School Total:					559	553	45	416	92	508		\$142,639.64	99%	82%	18%	8%	92%	\$22,995.49	34.3

2014-15 Industry Certification
Cocoa Beach Sr. High School

School	Program	Assessment	Teacher of Record	School Grade	# Students Identified	# Participants	# In Progress	# Passing	# Failing	# Completing Participants	Funding Weights	Potential Funding \$	% Participants	% Passing	% Failing	% In Progress	% Completing Participants	Cost of Assessments & Test Prep Used	Potential Bonus FTE Calculation
CBHS	GIS Technology	GIS Technician	Gaudy	X	2	2	0	2	0	2	0.1	\$831.72	100%	100%	0%	0%	100%	\$0.00	0.2
CBHS	Int'l Business	MOS Bundle	Friedlander	X	51	51	26	24	1	25	0.2	\$19,961.23	100%	96%	4%	5.1%	49%	\$5,000.00	4.8
CBHS	Fashion Design Services	NOCTI - Apparel & Text Prod & Mer	Lempyel		9	9	0	9	0	9	0	\$0.00	100%	100%	0%	0%	100%	\$429.03	0
CBHS	Marketing Management	Adobe: InDesign	Moore	X	4	0	0	0	0	0	0.1	\$0.00	0%	0%	0%	0%	0%	\$1,669.90	0
School Total:					66	62	26	35	1	36		\$20,792.95	94%	97%	3%	39%	58%	\$7,098.93	5

2014-15 Industry Certification Cocoa High School

School	Program	Assessment	Teacher of Record	School Grade	# Students Identified	# Participants	# In Progress	# Passing	# Failing	# Completing Participants	Funding Weights	Potential Funding \$	% Participants	% Passing	% Failing	% In Progress	% Completing Participants	Cost of Assessments & Test Prep Used	Potential Bonus FTE Calculation
CHS	Drafting	Autodesk Certified User - AutoCad	Auxier	X	14	14	0	8	6	14	0.2	\$6,653.74	100%	57%	43%	0%	100%	\$1,888.89	1.6
CHS	PC Support	MTA Windows Network Security	Deese	X	1	1	0	1	0	1	0.1	\$415.86	100%	100%	0%	0%	100%	\$800.00	0.1
CHS	PC Support	MTA Windows Server	Deese	X	1	1	0	0	1	1	0.1	\$0.00	100%	0%	100%	0%	100%	\$0.00	0
CHS	PC Support	MTA Windows OS Fundamentals	Deese	X	2	2	0	1	1	2	0.1	\$415.86	100%	50%	50%	0%	100%	\$0.00	0.1
CHS	Accounting	Intuit: Quick Books	Deese	X	3	3	0	1	2	3	0.2	\$831.72	100%	33%	67%	0%	100%	\$200.00	0.2
CHS	Health & Wellness	CMAA	Doyle	X	12	12	0	6	6	12	0.1	\$2,495.15	100%	50%	50%	0%	100%	\$1,365.00	0.6
CHS	Culinary Arts	SafeStaff Food Handler Certification	Knight		98	98	0	98	0	98	0	\$0.00	100%	100%	0%	0%	100%	\$832.00	0
CHS	Culinary Arts	ServSafe Manager	Knight	X	26	26	0	4	22	26	0.2	\$3,326.87	100%	15%	85%	0%	100%	\$951.00	0.8
CHS	Digital Design	Adobe: InDesign	Leaman	X	3	3	0	1	2	3	0.1	\$415.86	100%	33%	67%	0%	100%	\$262.50	0.1
CHS	Web Development	Adobe: Dreamweaver	Ocker	X	18	18	0	7	11	18	0.2	\$5,822.03	100%	39%	61%	0%	100%	\$4,175.23	1.4
CHS	Web Development	Adobe: Flash	Ocker	X	20	20	0	5	15	20	0.2	\$4,158.59	100%	25%	75%	0%	100%	\$0.00	1
CHS	Web Development	Adobe: Photoshop	Ocker	X	4	4	0	2	2	4	0.1	\$831.72	100%	50%	50%	0%	100%	\$0.00	0.2
CHS	Automotive Collision	ASE Student Assessments	Riffe		26	26	0	5	21	26	0	\$0.00	100%	19%	81%	0%	100%	\$690.00	0
CHS	Automotive Collision	FLADA	Riffe	X	12	12	0	9	3	12	0.1	\$3,742.73	100%	75%	25%	0%	100%	\$3,198.00	0.9
School Total:					240	240	0	148	92	240		\$29,110.13	100.0%	61.7%	38.3%	0%	100%	\$14,362.62	7.0

2014-15 Industry Certification
Eau Gallie High School

School	Program	Assessment	Teacher of Record	School Grade	# Students Identified	# Participants	# In Progress	# Passing	# Failing	# Completing Participants	Funding Weights	Potential Funding \$	% Participants	% Passing	% Failing	% In Progress	% Completing Participants	Cost of Assessments & Test Prep Used	Potential Bonus FTE Calculation
EGHS	CCC	MOS Bundle	Barton	X	118	118	113	5	0	5	0.2	\$4,158.59	100%	100%	0%	96%	4%	\$5,000.00	1
EGHS	Early Childhood Ed	Staff Credential	Dilger		15	15	10	5	0	5	0	\$0.00	100%	100%	0%	67%	33%	\$162.71	0
EGHS	Early Childhood Ed	Intro to Childcare Training	Dilger		15	15	10	5	0	5	0	\$0.00	100%	100%	0%	67%	33%	\$100.00	0
EGHS	Digital Design	Adobe: Dreamweaver	Keener	X	1	1	0	1	0	1	0.2	\$831.72	100%	100%	0%	0%	100%	\$4,270.76	0.2
EGHS	Digital Design	Adobe: Flash	Keener	X	47	47	0	22	25	47	0.2	\$18,297.80	100%	47%	53%	0%	100%	\$0.00	4.4
EGHS	Digital Design	Adobe: Photoshop	Keener	X	71	71	0	40	31	71	0.1	\$16,634.36	100%	56%	44%	0%	100%	\$0.00	4
EGHS	Digital Design	Adobe: Illustrator	Keener	X	10	10	0	9	1	10	0.1	\$3,742.73	100%	90%	10%	0%	100%	\$0.00	0.9
EGHS	Digital Design	Adobe: InDesign	Keener	X	26	26	0	18	8	26	0.1	\$7,485.46	100%	69%	31%	0%	100%	\$0.00	1.8
EGHS	Marine Tech	SkillsUSA Marine	Frahm		19	19	0	12	7	19	0	\$0.00	100%	63%	37%	0%	100%	\$310.00	0
EGHS	Web Development	Adobe: Dreamweaver	Keener	X	3	3	0	1	2	3	0.2	\$831.72	100%	33%	67%	0%	100%	\$0.00	0.2
EGHS	Web Development	Adobe: Flash	Keener	X	1	1	0	0	1	1	0.2	\$0.00	100%	0%	100%	0%	100%	\$0.00	0
EGHS	Web Development	Adobe: Photoshop	Keener	X	14	14	0	7	7	14	0.1	\$2,911.01	100%	50%	50%	0%	100%	\$0.00	0.7
EGHS	Drafting	Autodesk - Certified User AutoCAD	Lustic	X	27	27	0	16	11	27	0.2	\$13,307.49	100%	59%	41%	0%	100%	\$1,888.89	3.2
EGHS	Health & Wellness	CMAA	McMahon	X	15	15	0	15	0	15	0.1	\$6,237.89	100%	100%	0%	0%	100%	\$1,575.00	1.5
EGHS	Health & Wellness	CPR	Berry		13	13	0	13	0	13	0	\$0.00	100%	100%	0%	0%	100%	\$0.00	0
EGHS	Automotive Service Tech	FLADA	Younger	X	31	31	0	16	15	31	0.1	\$6,653.74	100%	52%	48%	0%	100%	\$2,718.30	1.6
School Total:					426	426	133	185	108	293		\$81,092.51	100.0%	63.1%	36.9%	31%	69%	\$16,025.66	19.5

2014-15 Industry Certification Edgewood Jr./Sr. High School

School	Program	Assessment	Teacher of Record	School Grade	# Students Identified	# Participants	# In Progress	# Passing	# Failing	# Completing Participants	Funding Weights	Potential Funding \$	% Participants	% Passing	% Failing	% In Progress	% Completing Participants	Cost of Assessments & Test Prep Used	Potential Bonus FTE Calculation
EHS	TV/Production	AVID	Kyzer	X	22	22	11	10	1	11	0.1	\$4,158.50	100%	91%	9%	50%	50%	\$1,262.50	1
EHS	Digital Design	Adobe: InDesign	Taylor	X	11	11	0	10	1	11	0.1	\$4,158.50	100%	91%	9%	0%	100%	\$4,437.73	1
School Total:					33	33	11	20	2	22		\$8,317.00	100.0%	90.9%	9.1%	33%	67%	\$ 5,700.23	2

2014-15 Industry Certification Heritage High School

School	Program	Assessment	Teacher of Record	School Grade	# Students Identified	# Participants	# In Progress	# Passing	# Failing	# Completing Participants	Funding Weights	Potential Funding \$	% Participants	% Passing	% Failing	% In Progress	% Completing Participants	Cost of Assessments & Test Prep Used	Potential Bonus FTE Calculation
HHS	Automotive Service Tech	FLADA	Broud	X	50	50	0	36	14	50	0.1	\$14,970.92	100%	72%	28%	0%	100%	\$4,557.15	3.6
HHS	Automotive Service Tech	ASE MLR G-1	Broud	X	2	2	0	1	1	2	0.2	\$831.72	100%	50%	50%	0%	100%	\$142.00	0.2
HHS	Interior Design	Chief Architect	Flemming	X	7	7	0	5	2	7	0.2	\$4,158.59	100%	71%	29%	0%	100%	\$2,334.00	1
HHS	Drafting	Autodesk - Certified User AutoCAD	Flemming	X	19	19	0	10	9	19	0.2	\$8,317.18	100%	53%	47%	0%	100%	\$1,888.89	2
HHS	Health & Wellness	CMAA	Luna	X	51	51	0	37	14	51	0.1	\$15,386.78	100%	73%	27%	0%	100%	\$5,975.53	3.7
HHS	Health & Wellness	CPR/AED/BLS for Healthcare Providers	Luna		34	34	0	34	0	34	0	\$0.00	100%	100%	0%	0%	100%	\$0.00	0
HHS	Business S & Mgmt	MOS Bundle	Sabdul	X	122	122	102	19	1	20	0.2	\$15,802.64	100%	95%	5%	84%	16%	\$5,000.00	3.8
HHS	CCC	MOS Bundle	Stengel	X	61	61	52	7	2	9	0.2	\$5,822.03	100%	78%	22%	85%	15%	\$5,000.00	1.4
HHS	Environmental Water	Water Treatment Plant Operator C	Sutton	X	27	23	0	3	20	23	0.1	\$1,247.58	85%	13%	87%	0%	100%	\$2,400.00	0.3
HHS	Medical Admin Specialist	CMAA	Trotman	X	24	24	0	15	9	24	0.1	\$6,237.89	100%	63%	38%	0%	100%	\$3,465.00	1.5
HHS	PC Support	MTA Windows OS Fundamentals	Trotman	X	15	15	0	6	9	15	0.1	\$2,495.15	100%	40%	60%	0%	100%	\$2,462.50	0.6
HHS	PC Support	MTA Windows Server Admin Fundamentals	Trotman	X	2	2	0	2	0	2	0.1	\$831.72	100%	100%	0%	0%	100%	\$0.00	0.2
HHS	Automation & Production	Solidworks	Washington	X	11	11	0	0	11	11	0.1	\$0.00	100%	0%	0%	0%	0%	\$0.00	0
School Total:					425	421	154	175	92	267		\$76,102.20	99.1%	65.5%	34.5%	36%	63%	\$33,225.07	18.3

2014-15 Industry Certification Melbourne High School

School	Program	Assessment	Teacher of Record	School Grade	# Students Identified	# Participants	# In Progress	# Passing	# Failing	# Completing Participants	Funding Weights	Potential Funding \$	% Participants	% Passing	% Failing	% In Progress	% Completing Participants	Cost of Assessments & Test Prep Used	Potential Bonus FTE Calculation
MHS	Web Development	Adobe: Dreamweaver	Angove	X	15	15	0	12	3	15	0.2	\$9,980.62	100%	80%	20%	0%	100%	\$4,175.23	2.4
MHS	Web Development	Adobe: Flash	Angove	X	8	8	0	7	1	8	0.2	\$5,822.03	100%	88%	13%	0%	100%	\$0.00	1.4
MHS	Web Development	Adobe: Photoshop	Angove	X	1	1	0	0	1	1	0.1	\$0.00	100%	0%	100%	0%	100%	\$0.00	0
MHS	Finance Academy	MOS Bundle	Angove	X	40	40	9	31	0	31	0.2	\$25,783.26	100%	100%	0%	23%	78%	\$5,093.23	6.2
MHS	Fashion Design Services	NOCTI - Apparel & Text Prod & Mer	Bollo	X	7	7	0	7	0	7	0.0	\$0.00	100%	100%	0%	0%	100%	\$224.00	0
MHS	Accounting	Intuit: Quickbooks	Fannon	X	2	2	0	2	0	2	0.2	\$1,663.44	100%	100%	0%	0%	100%	\$400.00	0.4
MHS	Finance Academy	MOS Bundle	Fannon	X	7	7	0	7	0	7	0.2	\$5,822.03	100%	100%	0%	0%	100%	\$93.23	1.4
MHS	Culinary Arts	Safestaff Food Handler Certification	Ferguson	X	63	63	0	63	0	63	0.0	\$0.00	100%	100%	0%	0%	100%	\$552.00	0
MHS	Culinary Arts	ServSafe Manager	Ferguson	X	44	44	0	36	8	44	0.2	\$29,941.85	100%	82%	18%	0%	100%	\$2,012.17	7.2
MHS	Culinary Arts	Solidworks	Gabeler	X	34	34	0	28	6	34	0.1	\$11,644.05	100%	82%	18%	0%	100%	\$2,853.34	2.8
MHS	Engineering Technology	C N A	Krug	X	15	15	0	15	0	15	0.1	\$6,237.89	100%	100%	0%	0%	100%	\$1,017.49	1.5
MHS	Culinary Arts	Safestaff Food Handler Certification	Ollinger	X	95	95	0	95	0	95	0.0	\$0.00	100%	100%	0%	0%	100%	\$792.00	0
MHS	Food Science	ServSafe Manager	Ollinger	X	23	23	0	7	16	23	0.2	\$5,822.03	100%	30%	70%	0%	100%	\$874.00	1.4
MHS	Construction Tech	NCCER Carpentry	Slate	X	102	102	101	1	0	1	0.2	\$831.72	100%	100%	0%	99%	1%	\$3,694.90	0.2
MHS	Digital Video	Adobe: Flash	Uhing	X	28	28	0	24	4	28	0.2	\$19,961.23	100%	86%	14%	0%	100%	\$4,175.23	4.8
MHS	Finance Academy	MOS Bundle	Uhing	X	32	32	23	8	1	9	0.2	\$6,653.74	100%	89%	11%	72%	28%	\$5,093.24	1.6
School Total:					516	516	133	343	40	383		\$130,163.87	100.0%	89.6%	10.4%	25.8%	74.2%	\$ 31,050.06	31.3

2014-15 Industry Certification
Merritt Island High School

School	Program	Assessment	Teacher of Record	School Grade	# Students Identified	# Participants	# In Progress	# Passing	# Failing	# Completing Participants	Funding Weights	Potential Funding \$	% Participants	% Passing	% Failing	% In Progress	% Completing Participants	Cost of Assessments & Test Prep Used	Potential Bonus FTE Calculation
MIHS	Admin Office Specialist	MOS Bundle	Burr	X	23	23	9	14	0	14	0.2	\$11,644.05	100%	0%	0%	39%	61%	\$5,066.88	2.8
MIHS	Automotive Service Tech	FLADA	Chapman	X	25	25	0	17	8	25	0.1	\$7,069.60	100%	68%	32%	0%	100%	\$2,878.20	1.7
MIHS	Automotive Service Tech	ASE MLR G1	Chapman	X	2	2	0	0	2	2	0.2	\$0.00	100%	0%	100%	0%	100%	\$1,226.80	0
MIHS	Web Development	Adobe: Dreamweaver	Erickson	X	29	29	0	29	0	29	0.2	\$24,119.82	100%	100%	0%	0%	100%	\$4,270.77	5.8
MIHS	Web Development	Adobe: Flash	Erickson	X	18	18	0	18	0	18	0.2	\$14,970.92	100%	100%	0%	0%	100%	\$0.00	3.6
MIHS	Web Development	Adobe: Photoshop	Erickson	X	2	2	0	2	0	2	0.1	\$831.72	100%	100%	0%	0%	100%	\$0.00	0.2
MIHS	Digital Design	Adobe: Photoshop	Forbes	X	26	26	0	26	0	26	0.1	\$10,812.33	100%	100%	0%	0%	100%	\$4,270.77	2.6
MIHS	Digital Design	Adobe: Flash	Forbes	X	7	7	0	7	0	7	0.2	\$5,822.03	100%	100%	0%	0%	100%	\$0.00	1.4
MIHS	Digital Design	Adobe: Illustrator	Forbes	X	9	9	0	9	0	9	0.1	\$3,742.73	100%	100%	0%	0%	100%	\$0.00	0.9
MIHS	Digital Design	Adobe: InDesign	Forbes	X	58	58	0	56	2	58	0.1	\$23,288.10	100%	97%	3%	0%	100%	\$0.00	5.6
MIHS	Drafting	Autodesk - Certified User AutoCAD	Haddock	X	5	5	0	1	4	5	0.2	\$831.72	100%	20%	80%	0%	100%	\$0.00	0.2
MIHS	Drafting	Autodesk - Certified User Revit	Haddock	X	1	1	0	1	0	1	0.2	\$831.72	100%	100%	0%	0%	100%	\$0.00	0.2
MIHS	Drafting	Autodesk - Inventor	Haddock	X	1	1	0	0	1	1	0.2	\$0.00	100%	0%	100%	0%	100%	\$0.00	0
MIHS	PLTW - ENGINEERING	Autodesk: Inventor	Parker	X	38	38	0	29	9	38	0.2	\$24,119.82	100%	76%	24%	0%	100%	\$1,888.89	5.8
MIHS	Food Science	ServSafe Manager	Martin	X	26	26	0	12	14	26	0.2	\$9,980.62	100%	46%	54%	0%	100%	\$3,138.65	2.4
MIHS	Early Childhood Ed	Staff Credential	Pearlman		23	23	15	8	0	8	0	\$0.00	100%	100%	0%	65%	35%	\$210.00	0
MIHS	Early Childhood Ed	Intro to Childcare Training	Pearlman		23	23	15	8	0	8	0	\$0.00	100%	100%	0%	65%	35%	\$271.08	0
MIHS	Marketing Management	Adobe: InDesign	Segert	X	4	4	0	2	2	4	0.1	\$831.72	100%	50%	50%	0%	100%	\$554.60	0.2
School Total:					320	320	39	239	42	281		\$138,896.91	100.0%	85.1%	14.9%	12%	88%	\$23,776.64	33.4

2014-15 Industry Certification Palm Bay Magnet High School

School	Program	Assessment	Teacher of Record	School Grade	# Students Identified	# Participants	# In Progress	# Passing	# Failing	# Completing Participants	Funding Weights	Potential Funding \$	% Participants	% Passing	% Failing	% In Progress	% Completing Participants	Cost of Assessments & Test Prep Used	Potential Bonus FTE Calculation
PBMS	Drafting	Autodesk - Certified User AutoCAD	Allen, D	X	12	12	0	10	2	12	0.2	\$8,317.18	100%	83%	17%	0%	100%	\$4,888.89	2
PBMS	Engineering Technology	Solidworks	Allen, R	X	10	10	0	8	2	10	0.1	\$3,326.87	100%	80%	20%	0%	100%	\$2,853.34	0.8
PBMS	Engineering Technology	Solidworks - Professional	Allen, R	X	1	1	0	1	0	1	0	\$0.00	100%	100%	0%	0%	100%	\$0.00	0
PBMS	Fashion Design Services	NOCTI - Apparel & Text Prod & Mer	Baker		12	12	0	12	0	12	0	\$0.00	100%	100%	0%	0%	100%	\$678.50	0
PBMS	Patient CareAssisting	C N A	Bassile	X	15	15	0	15	0	15	0.1	\$6,237.89	100%	100%	0%	0%	100%	\$1,992.99	1.5
PBMS	Early ChildhoodEd	ECPC	Chappell		19	19	15	4	0	4	0	\$0.00	100%	100%	0%	79%	21%	\$150.00	0
PBMS	Early ChildhoodEd	ServSafe Manager	Chappell	X	6	6	0	0	6	6	0.2	\$0.00	100%	0%	100%	0%	100%	\$222.00	0
PBMS	Early ChildhoodEd	Intro to Childcare Training	Chappell		19	19	15	4	0	4	0	\$0.00	100%	100%	0%	79%	21%	\$312.79	0
PBMS	Gaming	Adobe: Dreamweaver	Fine	X	3	3	0	1	2	3	0.2	\$831.72	100%	33%	67%	0%	100%	\$4,299.41	0.2
PBMS	Comm Tech	Adobe: Illustrator	Fine	X	34	34	0	11	23	34	0.1	\$4,574.45	100%	32%	68%	0%	100%	\$0.00	1.1
PBMS	CulinaryArts	SafeStaff Food Handler Certification	Ho		53	53	0	53	0	53	0	\$0.00	100%	100%	0%	0%	100%	\$424.00	0
PBMS	CulinaryArts	ServSafe Manager	Ho	X	35	35	0	23	12	35	0.2	\$19,129.51	100%	66%	34%	0%	100%	\$1,366.15	4.6
PBMS	Web Development	Adobe: Dreamweaver	Loyd	X	14	14	0	0	14	14	0.2	\$0.00	100%	0%	100%	0%	100%	\$500.00	0
PBMS	Business Software Apps	MOS Bundle	Loyd	X	10	10	9	1	0	1	0.2	\$831.72	100%	100%	0%	90%	10%	\$0.00	0.2
PBMS	CriminalJustice	NOCTI - Criminal Justice	Morrison		25	25	0	25	0	25	0	\$0.00	100%	100%	0%	0%	100%	\$500.00	0
PBMS	Construction Tech	NCCERCarpentry	Shalosky	X	74	74	74	0	0	0	0.2	\$0.00	100%	0%	0%	100%	0%	\$4,946.54	0
School Total:					342	342	113	168	61	229		\$43,249.34	100.0%	73.4%	26.6%	33.0%	67.0%	\$23,134.61	10.4

2014-15 Industry Certification
Rockledge High School

School	Program	Assessment	Teacher of Record	School Grade	# Students Identified	# Participants	# In Progress	# Passing	# Failing	# Completing Participants	Funding Weights	Potential Funding \$	% Participants	% Passing	% Failing	% In Progress	% Completing Participants	Cost of Assessments & Test Prep Used	Potential Bonus FTE Calculation
RHS	Patient Care Assisting	C N A	Calhoun	X	14	14	0	14	0	14	0.1	\$5,822.03	100%	100%	0%	0%	100%	\$2,100.00	1.4
RHS	Hosp & Tourism	ServSafe Manager	Kearns	X	26	26	0	12	14	26	0.2	\$9,980.62	100%	46%	54%	0%	100%	\$1,860.15	2.4
RHS	Digital Design	Adobe: Photoshop	Natali	X	59	59	0	39	20	59	0.1	\$16,218.50	100%	66%	34%	0%	100%	\$4,175.21	3.9
RHS	Digital Design	Adobe: Illustrator	Natali	X	34	34	0	19	15	34	0.1	\$7,901.32	100%	56%	44%	0%	100%	\$0.00	1.9
RHS	Digital Design	Adobe: InDesign	Natali	X	20	14	0	1	13	14	0.1	\$415.86	70%	7%	93%	0%	100%	\$0.00	0.1
RHS	Fashion Design Services	NOCTI - Apparel & Text Prod & Mer	Pingston		5	5	0	5	0	5	0	\$0.00	100%	100%	0%	0%	100%	\$382.50	0
RHS	Drafting	Autodesk - Certified User AutoCAD	Schooley	X	18	18	0	15	3	18	0.2	\$12,475.77	100%	83%	17%	0%	100%	\$1,888.89	3
RHS	Automotive Service Tech	FLADA	Sebetka	X	30	30	0	23	7	30	0.1	\$9,564.76	100%	77%	23%	0%	100%	\$2,478.45	2.3
RHS	Automotive Service Tech	ASE MLR G1	Sebetka	X	2	2	0	0	2	2	0.2	\$0.00	100%	0%	100%	0%	100%	\$1,226.80	0
RHS	Digital Design	Adobe: Photoshop	Shinault	X	11	11	0	8	3	11	0.1	\$3,326.87	100%	73%	27%	0%	100%	\$4,175.22	0.8
RHS	Digital Design	Adobe: InDesign	Shinault	X	42	42	0	40	2	42	0.1	\$16,634.36	100%	95%	5%	0%	100%	\$0.00	4
RHS	Digital Design	Adobe: Illustrator	Shinault	X	27	27	0	26	1	27	0.1	\$10,812.33	100%	96%	4%	0%	100%	\$0.00	2.6
RHS	Criminal Justice	NOCTI - Criminal Justice	Tardiff		11	11	0	11	0	11	0	\$0.00	100%	100%	0%	0%	100%	\$450.00	0
School Total:					299	293	0	213	80	293		\$93,152.42	98.0%	72.7%	27.3%	0%	100%	\$18,737.22	22.4

2014-15 Industry Certification Satellite High School

School	Program	Assessment	Teacher of Record	School Grade	# Students Identified	# Participants	# In Progress	# Passing	# Failing	# Completing Participants	Funding Weights	Potential Funding \$	% Participants	% Passing	% Failing	% In Progress	% Completing Participants	Cost of Assessments & Test Prep Used	Potential Bonus FTE Calculation
SHS	Marketing Management	Adobe: InDesign	Brooks		6	6	0	0	6	6	0.1	\$0.00	100%	0%	100%	0%	100%	\$554.60	0
SHS	Marketing Management	Adobe: Illustrator	Brooks		1	1	0	0	1	1	0.1	\$0.00	100%	0%	100%	0%	100%	\$0.00	0
SHS	Business Software	MOS Bundle	Brooks	X	20	20	2	18	0	18	0.2	\$14,970.92	100%	100%	0%	10%	90%	\$5,000.00	3.6
SHS	Fashion Design Services	NOCTI - Apparel & Text Prod & Mer	Davinroy-Gray		15	15	0	15	0	15	0	\$0.00	100%	100%	0%	0%	100%	\$806.50	0
SHS	Drafting	Autodesk - Certified User AutoCAD	Galiszewski	X	34	34	0	33	1	34	0.2	\$27,446.69	100%	97%	3%	0%	100%	\$1,888.89	6.6
SHS	Automotive Service Tech	FLADA	Pitts	X	41	41	0	16	25	41	0.1	\$6,653.74	100%	39%	61%	0%	100%	\$4,557.15	1.6
SHS	Automotive Service Tech	ASE MLR G-1	Pitts	X	1	1	0	1	0	1	0.2	\$831.72	100%	100%	0%	0%	100%	\$213.00	0.2
SHS	Early Childhood Ed	ServSafe Manager	Schmid	X	9	9	0	0	9	9	0.2	\$0.00	100%	0%	100%	0%	100%	\$1,347.00	0
SHS	Early Childhood Ed	Staff Credential	Schmid		27	27	20	7	0	7	0	\$0.00	100%	100%	0%	74%	26%	\$337.64	0
SHS	Early Childhood Ed	Intro to Childcare Training	Schmid		27	27	20	7	0	7	0	\$0.00	100%	100%	0%	74%	26%	\$240.00	0
SHS	Comm Tech	Adobe: Dreamweaver	Stratton	X	1	1	0	0	1	1	0.2	\$0.00	100%	0%	100%	0%	100%	\$4,299.40	0
SHS	Comm Tech	Adobe: Photoshop	Stratton	X	19	19	0	0	19	19	0.1	\$0.00	100%	0%	100%	0%	100%	\$0.00	0
SHS	Digital Media/MM	Adobe: Photoshop	Stratton	X	26	26	0	6	20	26	0.1	\$2,495.15	100%	23%	77%	0%	100%	\$0.00	0.6
SHS	Comm Tech	Adobe: Illustrator	Stratton	X	35	35	0	30	5	35	0.1	\$12,475.77	100%	86%	14%	0%	100%	\$4,299.40	3
SHS	Comm Tech	Adobe: InDesign	Stratton	X	22	22	0	17	5	22	0.1	\$7,069.60	100%	77%	23%	0%	100%	\$0.00	1.7
SHS	Food Science	ServSafe Manager	Thomas	X	29	29	0	16	13	29	0.2	\$13,307.49	100%	55%	45%	0%	100%	\$1,418.00	3.2
School Total:					313	313	42	166	105	271		\$85,251.10	100.0%	61.3%	38.7%	13%	87%	\$24,961.58	20.5

2014-15 Industry Certification
Space Coast Sr. High School

School	Program	Assessment	Teacher of Record	School Grade	# Students Identified	# Participants	# In Progress	# Passing	# Failing	# Completing Participants	Funding Weights	Potential Funding \$	% Participants	% Passing	% Failing	% In Progress	% Completing Participants	Cost of Assessments & Test Prep Used	Potential Bonus FTE Calculation
SCHS	Drafting	Autodesk - Certified User AutoCAD	Gannon	X	14	14	0	14	0	14	0.2	\$11,644.05	100%	100%	0%	0%	100%	\$1,888.88	2.8
SCHS	Drafting	Autodesk - Certified User Revit	Gannon	X	23	23	0	23	0	23	0.2	\$19,129.51	100%	100%	0%	0%	100%	\$0.00	4.6
SCHS	Drafting	Autodesk - Certified User Inventor	Gannon	X	23	23	0	23	0	23	0.2	\$19,129.51	100%	100%	0%	0%	100%	\$0.00	4.6
SCHS	A/C Refrig & Heat	NATE	Mount	X	7	7	5	2	0	2	0.2	\$1,663.44	100%	100%	0%	71%	29%	\$58.85	0.4
SCHS	A/C Refrig & Heat	NCCER	Mount	X	21	21	10	11	0	11	0.2	\$9,148.90	100%	100%	0%	48%	52%	\$555.00	2.2
SCHS	A/C Refrig & Heat	EPA	Mount		39	39	0	39	0	39	0	\$0.00	100%	100%	0%	0%	100%	\$500.00	0
SCHS	Engineering Technology	Solidworks	Reyes	X	18	18	0	17	1	18	0.1	\$7,069.60	100%	94%	6%	0%	100%	\$2,853.34	1.7
SCHS	Teacher Assisting	ParaPro	Roy		13	13	0	13	0	13	0	\$0.00	100%	100%	0%	0%	100%	\$650.00	0
SCHS	Marketing Management	A*S*K* Marketing Fundamentals	Slaughter		17	17	0	1	16	17	0	\$0.00	100%	6%	94%	0%	100%	\$480.00	0
SCHS	Admin Office Specialist	MOS Bundle	Stoppelbein	X	70	70	42	28	0	28	0.2	\$23,288.10	100%	100%	0%	60%	40%	\$5,000.00	5.6
SCHS	TV Production	AVID	Striegel	X	41	41	29	5	7	12	0.1	\$2,079.30	100%	42%	58%	71%	29%	\$1,000.00	0.5
School Total:					286	286	86	176	24	200		\$93,152.42	100.0%	88.0%	12.0%	30%	70%	\$12,986.07	22.4

2014-15 Industry Certification
Titusville High School

School	Program	Assessment	Teacher of Record	School Grade	# Students Identified	# Participants	# In Progress	# Passing	# Failing	# Completing Participants	Funding Weights	Potential Funding \$	% Participants	% Passing	% Failing	% In Progress	% Completing Participants	Cost of Assessments & Test Prep Used	Potential Bonus FTE Calculation
THS	Digital Design	Adobe: Illustrator	Benson	X	33	33	0	31	2	33	0.1	\$12,891.63	100%	94%	6%	0%	100%	\$4,532.72	3.1
THS	Digital Design	Adobe: InDesign	Benson	X	48	48	0	43	5	48	0.1	\$17,881.94	100%	90%	10%	0%	100%	\$0.00	4.3
THS	TV Production	AVID	Curtis	X	72	72	67	5	0	5	0.1	\$2,079.30	100%	100%	0%	93%	7%	\$1,000.00	0.5
THS	Web Development	Adobe: Dreamweaver	Ely	X	14	14	0	13	1	14	0.2	\$10,812.33	100%	93%	7%	0%	100%	\$4,437.71	2.6
THS	Web Development	Adobe: Flash	Ely	X	6	6	0	4	2	6	0.2	\$3,326.87	100%	67%	33%	0%	100%	\$0.00	0.8
THS	Web Development	Adobe: Illustrator	Ely	X	9	9	0	9	0	9	0.1	\$3,742.73	100%	100%	0%	0%	100%	\$0.00	0.9
THS	Web Development	Adobe: InDesign	Ely	X	37	37	0	32	5	37	0.1	\$13,307.49	100%	86%	14%	0%	100%	\$0.00	3.2
THS	Patient Care Assisting	C N A	Hall	X	37	37	0	36	1	37	0.1	\$14,970.92	100%	97%	3%	0%	100%	\$4,676.01	3.6
THS	Patient Care Assisting	CPR/AED/BLS for Healthcare Providers	Hall		37	37	0	37	0	37	0	\$0.00	100%	100%	0%	0%	100%	\$0.00	0
THS	Culinary Arts	SafeStaff Food Handler Certification	Hietpas		75	75	0	75	0	75	0	\$0.00	100%	100%	0%	0%	100%	\$600.00	0
THS	Culinary Arts	ServSafe Manager	Hietpas	X	58	58	0	33	25	58	0.2	\$27,446.69	100%	57%	43%	0%	100%	\$2,063.75	6.6
THS	Fashion Design Services	NOCTI - Apparel & Text Prod & Mer	Lawrence		16	16	0	16	0	16	0	\$0.00	100%	100%	0%	0%	100%	\$512.00	0
THS	Patient Care Assisting	CPR/AED/BLS for Healthcare Providers	Shimer		55	55	0	55	0	55	0	\$0.00	100%	100%	0%	0%	100%	\$0.00	0
THS	Automotive Service Tech	FLADA	Soros	X	33	33	0	28	5	33	0.1	\$11,644.05	100%	85%	15%	0%	100%	\$3,117.55	2.8
School Total:					530	530	67	417	46	463		\$118,103.96	100.0%	90.1%	9.9%	13%	87%	\$20,939.74	28.4

2014-2015 Industry Certification Viera High School

School	Program	Assessment	Teacher of Record	School Grade	# Students Identified	# Participants	# In Progress	# Passing	# Failing	# Completing Participants	Funding Weights	Potential Funding \$	% Participants	% Passing	% Failing	% In Progress	% Completing Participants	Cost of Assessments & Test Prep Used	Potential Bonus FTE Calculation
VHS	Early Childhood Ed	Staff Credential	Anderson		23	23	14	9	0	9	0	\$0.00	100%	100%	0%	61%	39%	\$229.16	0
VHS	Early Childhood Ed	Intro to Childcare Training	Anderson		23	23	14	9	0	9	0	\$0.00	100%	100%	0%	61%	39%	\$140.00	0
VHS	Early Childhood Ed	ServSafe - training materials	Anderson	X							0.2	\$0.00						\$845.00	
VHS	Finance Academy	MOS Bundle	Brown	X	110	110	62	40	8	48	0.2	\$33,268.72	100%	83%	17%	56%	44%	\$5,000.00	8
VHS	Comm Tech	Adobe: Premier Pro	Cole	X	3	3	0	3	0	3	0.1	\$1,247.58	100%	100%	0%	0%	100%	\$0.00	0.3
VHS	Comm Tech	Adobe: Illustrator	Cole	X	58	58	0	30	28	58	0.1	\$12,475.77	100%	52%	48%	0%	100%	\$0.00	3
VHS	Comm Tech	Adobe: InDesign	Cole	X	57	57	0	40	17	57	0.1	\$16,634.36	100%	70%	30%	0%	100%	\$0.00	4
VHS	Digital Media/MM	Adobe: Photoshop	Cole	X	49	49	0	34	15	49	0.1	\$14,139.21	100%	69%	31%	0%	100%	\$4,175.21	3.4
VHS	Finance Academy	MOS Bundle	Gammella	X	118	118	72	43	3	46	0.2	\$35,763.87	100%	93%	7%	61%	39%	\$5,000.00	8.6
VHS	Interior Design	Chief Architect Apprentice	Hosmer	X	12	12	0	11	1	12	0.2	\$9,148.90	100%	92%	8%	0%	100%	\$1,909.51	2.2
VHS	Health Science - Dental	CMAA	Johnston	X	29	29	0	29	0	29	0.1	\$12,059.91	100%	100%	0%	0%	100%	\$3,150.00	2.9
VHS	Health Science - Dental	CPR/AED/BLS for Healthcare Providers	Johnston		30	30	0	30	0	30	0	\$0.00	100%	100%	0%	0%	100%	\$0.00	0
VHS	Comm Tech	Adobe: Illustrator	Peregrina	X	78	78	0	75	3	78	0.1	\$31,189.43	100%	96%	4%	0%	100%	\$4,175.21	7.5
VHS	Comm Tech	Adobe: InDesign	Peregrina	X	1	1	0	1	0	1	0.1	\$415.86	100%	100%	0%	0%	100%	\$0.00	0.1
VHS	Comm Tech	Adobe: Photoshop	Peregrina	X	2	2	0	2	0	2	0.1	\$831.72	100%	100%	0%	0%	100%	\$0.00	0.2
VHS	Comm Tech	Adobe: Premier Pro	Peregrina	X	2	2	0	2	0	2	0.1	\$831.72	100%	100%	0%	0%	100%	\$0.00	0.2
VHS	Digital Media/MM	Adobe: Photoshop	Peregrina	X	50	50	0	41	9	50	0.1	\$17,050.22	100%	82%	18%	0%	100%	\$0.00	4.1
VHS	Food Science	ServSafe - training materials	Ralph	X							0.2	\$0.00						\$1,168.00	0
VHS	TV Production	AVID	Sivco	X	50	50	0	20	30	50	0.1	\$8,317.18	100%	40%	60%	0%	100%	\$1,262.50	2
School Total:					695	695	162	419	114	533		\$185,057.26	100.0%	78.6%	21.4%	23%	77%	\$ 24,624.09	44.5

2014-15 Industry Certification Central Jr/Middle School

School	Assessment	Teacher of Record	School Grade	# Students Identified	# Participants	# In Progress	# Passing	# Failing	# Completing Participants	Funding Weights	Potential Funding \$	% Participants	% Passing	% Failing	% In Progress	% Completing Participants	Potential Bonus FTE Calculation
CMS	MOS Bundle	Hrkach	X	11	11	0	11	0	11	0.100	\$4,574.45	100%	100%	0%	0%	100%	1.100
CMS	MOS: Word	Hrkach	X	44	44	0	44	0	44	0.025	\$4,574.45	100%	100%	0%	0%	100%	1.100
CMS	IC3 Digital Literacy Certification	Hrkach	X	3	3	0	3	0	3	0.025	\$311.89	100%	100%	0%	0%	100%	0.075
CMS	IC3 Digital Literacy Certification	Kraus	X	2	2	0	2	0	2	0.025	\$207.93	100%	100%	0%	0%	100%	0.050
School Total:				60	60	0	60	0	60		\$ 9,668.72	100%	100%	0%	0%	100%	2.325

2014-15 Industry Certification Cocoa Beach Jr/Middle School

School	Assessment	Teacher of Record	School Grade	# Students Identified	# Participants	# In Progress	# Passing	# Failing	# Completing Participants	Funding Weights	Potential Funding\$	% Participants	% Passing	% Failing	% In Progress	% Completing Participants	Potential Bonus FTE Calculation
CBJR	MOS Bundle	Friedlander	X	7	7	0	7	0	7	0.100	\$2,911.01	100%	100%	0%	0%	100%	0.700
CBJR	MOS: Excel	Friedlander	X	2	2	0	2	0	2	0.025	\$207.93	100%	100%	0%	0%	100%	0.050
CBJR	MOS: Word	Friedlander	X	5	5	0	5	0	5	0.025	\$519.82	100%	100%	0%	0%	100%	0.125
School Total:				14	14	0	14	0	14		\$ 3,638.77	100%	100%	0%	0%	100%	0.875

2014-15 Industry Certification Hoover Jr/Middle School

School	Assessment	Teacher of Record	School Grade	# Students Identified	# Participants	# In Progress	# Passing	# Failing	# Completing Participants	Funding Weights	Potential Funding \$	% Participants	% Passing	% Failing	% In Progress	% Completing Participants	Potential Bonus FTE Calculation
HMS	MOS Bundle	Weaver	X	25	25	0	25	0	25	0.100	\$10,396.48	100%	100%	0%	0%	100%	2.500
HMS	MOS: Word	Weaver	X	14	14	0	14	0	14	0.025	\$1,455.51	100%	100%	0%	0%	100%	0.350
HMS	IC3 Digital Literacy Certification	Weaver	X	7	7	0	7	0	7	0.025	\$727.75	100%	100%	0%	0%	100%	0.175
School Total:				46	46	0	46	0	46		\$ 12,579.73	100%	100%	0%	0%	100%	3.025

2014-15 Industry Certification Johnson Jr/Middle School

School	Assessment	Teacher of Record	School Grade	# Students Identified	# Participants	# In Progress	# Passing	# Failing	# Completing Participants	Funding Weights	Potential Funding\$	% Participants	% Passing	% Failing	% In Progress	% Completing Participants	Potential Bonus FTE Calculation
JOMS	MOS: Excel	Scholz	X	2	2	0	2	0	2	0.025	\$207.93	100%	100%	0%	0%	100%	0.050
School Total:				2	2	0	2	0	2		\$207.93	100%	100%	0%	0%	100%	0.050

2014-15 Industry Certification Jackson Jr/Middle School

School	Assessment	Teacher of Record	School Grade	# Students Identified	# Participants	# In Progress	# Passing	# Failing	# Completing Participants	Funding Weights	Potential Funding \$	% Participants	% Passing	% Failing	% In Progress	% Completing Participants	Potential Bonus FTE Calculation
JAMS	MOS Bundle	Scott	X	1	1	0	1	0	1	0.100	\$415.86	100%	100%	0%	0%	100%	0.100
JAMS	MOS: Word	Scott	X	8	8	0	8	0	8	0.025	\$831.72	100%	100%	0%	0%	100%	0.200
School Total:				9	9	0	9	0	9		\$1,247.58	100%	100%	0%	0%	100%	0.300

2014-15 Industry Certification McNair Jr/Middle School

School	Assessment	Teacher of Record	School Grade	# Students Identified	# Participants	# In Progress	# Passing	# Failing	# Completing Participants	Funding Weights	Potential Funding\$	% Participants	% Passing	% Failing	% In Progress	% Completing Participants	Potential Bonus FTE Calculation
MCMS	MOS: Excel	Mills	X	1	1	0	1	0	1	0.025	\$103.96	100%	100%	0%	0%	100%	0.025
MCMS	IC3 Digital Literacy Certification	Mills	X	3	3	0	3	0	3	0.025	\$311.89	100%	100%	0%	0%	100%	0.075
School Total:				4	4	0	4	0	4		\$415.86	100%	100%	0%	0%	100%	0.100

2014-15 Industry Certification Space Coast Jr/Middle School

School	Assessment	Teacher of Record	School Grade	# Students Identified	# Participants	# In Progress	# Passing	# Failing	# Completing Participants	Funding Weights	Potential Funding\$	% Participants	% Passing	% Failing	% In Progress	% Completing Participants	Potential Bonus FTE Calculation
SCJR	MOS Bundle	Slaughter	X	1	1	0	1	0	1	0.100	\$415.86	100%	100%	0%	0%	100%	0.100
SCJR	MOS: Excel	Slaughter	X	7	7	0	7	0	7	0.025	\$727.75	100%	100%	0%	0%	100%	0.175
SCJR	MOS Bundle	Stoppelbein	X	8	8	0	8	0	8	0.100	\$3,326.87	100%	100%	0%	0%	100%	0.800
SCJR	MOS: Excel	Stoppelbein	X	3	3	0	3	0	3	0.025	\$311.89	100%	100%	0%	0%	100%	0.075
School Total:				18	18	0	18	0	18		\$ 4,366.52	100%	100%	0%	0%	100%	1.150

This page intentionally left blank.

Industry Certification Results By High School Assessment



This page intentionally left blank.

2014-15 High School Industry Certification By Assessment

Assessment	School	Program	School Grade	# Students Identified	# Participants	# In Progress	# Passing	# Failing	# Completing Participants	Funding Weights	Potential Funding \$	% Participants	% Passing	% Failing	% In Progress	% Completing Participants	
	SCHS	Marketing Management		17	17	0	1	16	17	0	\$0.00	100%	6%	94%	0%	100%	
		A*S*K* Marketing Fundamentals		17	17	0	1	16	17	0	\$0.00	100%	6%	94%	0%	100%	
Adobe: Dreamweaver	AHS	Web Development	X	6	6	0	3	3	6	0.2	\$2,495.15	100%	50%	50%	0%	100%	
	CHS	Web Development	X	18	18	0	7	11	18	0.2	\$5,822.03	100%	39%	61%	0%	100%	
	EGHS	Digital Design	X	1	1	0	1	0	1	0.2	\$831.72	100%	100%	0%	0%	100%	
	EGHS	Web Development	X	3	3	0	1	2	3	0.2	\$831.72	100%	33%	67%	0%	100%	
	MHS	Web Development	X	15	15	0	12	3	15	0.2	\$9,980.62	100%	80%	20%	0%	100%	
	MIHS	Web Development	X	29	29	0	29	0	29	0.2	\$24,119.82	100%	100%	0%	0%	100%	
	PBMS	Gaming	X	3	3	0	1	2	3	0.2	\$831.72	100%	33%	67%	0%	100%	
	PBMS	Web Development	X	14	14	0	0	14	14	0.2	\$0.00	100%	0%	100%	0%	100%	
	SHS	Comm Tech	X	1	1	0	0	1	1	0.2	\$0.00	100%	0%	100%	0%	100%	
	THS	Web Development	X	14	14	0	13	1	14	0.2	\$10,812.33	100%	93%	7%	0%	100%	
		Adobe: Dreamweaver		104	104	0	67	37	104		\$55,725.11	100%	64%	36%	0%	100%	
Adobe: Flash	CHS	Web Development	X	20	20	0	5	15	20	0.2	\$4,158.59	100%	25%	75%	0%	100%	
	EGHS	Digital Design	X	47	47	0	22	25	47	0.2	\$18,297.80	100%	47%	53%	0%	100%	
	EGHS	Web Development	X	1	1	0	0	1	1	0.2	\$0.00	100%	0%	100%	0%	100%	
	MHS	Digital Video	X	28	28	0	24	4	28	0.2	\$19,961.23	100%	86%	14%	0%	100%	
	MHS	Web Development	X	8	8	0	7	1	8	0.2	\$5,822.03	100%	88%	13%	0%	100%	
	MIHS	Digital Design	X	7	7	0	7	0	7	0.2	\$5,822.03	100%	100%	0%	0%	100%	
	MIHS	Web Development	X	18	18	0	18	0	18	0.2	\$14,970.92	100%	100%	0%	0%	100%	
	THS	Web Development	X	6	6	0	4	2	6	0.2	\$3,326.87	100%	67%	33%	0%	100%	
			Adobe: Flash		135	135	0	87	48	135		\$72,359.47	100%	64%	36%	0%	100%
	Adobe: Illustrator	AHS	Digital Design	X	19	19	0	18	1	19	0.1	\$7,485.46	100%	95%	5%	0%	100%
AHS		Web Development	X	1	1	0	0	1	1	0.1	\$0.00	100%	0%	100%	0%	100%	
BHS		Comm Tech	X	4	4	0	3	1	4	0.1	\$1,247.58	100%	75%	25%	0%	100%	
BHS		Digital Design	X	9	9	0	9	0	9	0.1	\$3,742.73	100%	100%	0%	0%	100%	
EGHS		Digital Design	X	10	10	0	9	1	10	0.1	\$3,742.73	100%	90%	10%	0%	100%	
MIHS		Digital Design	X	9	9	0	9	0	9	0.1	\$3,742.73	100%	100%	0%	0%	100%	
PBMS		Comm Tech	X	34	34	0	11	23	34	0.1	\$4,574.45	100%	32%	68%	0%	100%	
RHS		Digital Design	X	34	34	0	19	15	34	0.1	\$7,901.32	100%	56%	44%	0%	100%	
RHS		Digital Design	X	27	27	0	26	1	27	0.1	\$10,812.33	100%	96%	4%	0%	100%	
SHS		Comm Tech	X	35	35	0	30	5	35	0.1	\$12,475.77	100%	86%	14%	0%	100%	
SHS		Marketing Management		1	1	0	0	1	1	0.1	\$0.00	100%	0%	100%	0%	100%	
THS		Digital Design	X	33	33	0	31	2	33	0.1	\$12,891.63	100%	94%	6%	0%	100%	
THS		Web Development	X	9	9	0	9	0	9	0.1	\$3,742.73	100%	100%	0%	0%	100%	
VHS		Comm Tech	X	58	58	0	30	28	58	0.1	\$12,475.77	100%	52%	48%	0%	100%	
VHS		Comm Tech	X	78	78	0	75	3	78	0.1	\$31,189.43	100%	96%	4%	0%	100%	
		Adobe: Illustrator		361	361	0	279	82	361		\$116,024.66	100%	77%	23%	0%	100%	

2014-15 High School Industry Certification By Assessment

Assessment	School	Program	School Grade	# Students Identified	# Participants	# In Progress	# Passing	# Failing	# Completing Participants	Funding Weights	Potential Funding \$	% Participants	% Passing	% Failing	% In Progress	% Completing Participants
Adobe: InDesign	AHS	Digital Design	X	37	37	0	27	10	37	0.1	\$11,228.19	100%	73%	27%	0%	100%
	AHS	Web Development	X	1	1	0	0	1	1	0.1	\$0.00	100%	0%	100%	0%	100%
	BHS	Comm Tech	X	26	22	0	12	10	22	0.1	\$4,990.31	85%	55%	45%	0%	100%
	BHS	Digital Design	X	4	4	0	3	1	4	0.1	\$1,247.58	100%	75%	25%	0%	100%
	CBHS	Marketing Management	X	4	0	0	0	0	0	0.1	\$0.00	0%	0%	0%	0%	0%
	CHS	Digital Design	X	3	3	0	1	2	3	0.1	\$415.86	100%	33%	67%	0%	100%
	EGHS	Digital Design	X	26	26	0	18	8	26	0.1	\$7,485.46	100%	69%	31%	0%	100%
	EHS	Digital Design	X	11	11	0	10	1	11	0.1	\$4,158.59	100%	91%	9%	0%	0%
	MHS	Digital Design	X	58	58	0	56	2	58	0.1	\$23,288.10	100%	97%	3%	0%	100%
	MHS	Marketing Management	X	4	0	0	2	2	4	0.1	\$831.72	100%	50%	50%	0%	100%
	RHS	Digital Design	X	20	14	0	1	13	14	0.1	\$415.86	70%	7%	93%	0%	100%
	RHS	Digital Design	X	42	42	0	40	2	42	0.1	\$16,634.36	100%	95%	5%	0%	100%
	SHS	Comm Tech	X	22	22	0	17	5	22	0.1	\$7,069.60	100%	77%	23%	0%	100%
	SHS	Marketing Management	X	6	6	0	0	6	6	0.1	\$0.00	100%	0%	100%	0%	100%
THS	Digital Design	X	48	48	0	43	5	48	0.1	\$17,881.94	100%	90%	10%	0%	100%	
THS	Web Development	X	37	37	0	32	5	37	0.1	\$13,307.49	100%	86%	14%	0%	100%	
VHS	Comm Tech	X	57	57	0	40	17	57	0.1	\$16,634.36	100%	70%	30%	0%	100%	
VHS	Comm Tech	X	1	1	0	1	0	1	0.1	\$415.86	100%	100%	0%	0%	100%	
Adobe: InDesign				407	393	0	303	90	393		\$126,005.28	97%	77%	23%	0%	100%
Adobe: Photoshop	AHS	Digital Design	X	5	5	0	4	1	5	0.1	\$1,663.44	100%	80%	20%	0%	100%
	AHS	Web Development	X	3	3	0	0	3	3	0.1	\$0.00	100%	0%	100%	0%	100%
	BHS	Comm Tech	X	21	20	0	2	18	20	0.1	\$831.72	95%	10%	90%	0%	100%
	BHS	Digital Design	X	34	34	0	22	12	34	0.1	\$9,148.90	100%	65%	35%	0%	100%
	CHS	Web Development	X	4	4	0	2	2	4	0.1	\$831.72	100%	50%	50%	0%	100%
	EGHS	Digital Design	X	71	71	0	40	31	71	0.1	\$16,634.36	100%	56%	44%	0%	100%
	EGHS	Web Development	X	14	14	0	7	7	14	0.1	\$2,911.01	100%	50%	50%	0%	100%
	MHS	Web Development	X	1	1	0	0	1	1	0.1	\$0.00	100%	0%	100%	0%	100%
	MHS	Web Development	X	2	2	0	2	0	2	0.1	\$831.72	100%	100%	0%	0%	100%
	MHS	Digital Design	X	26	26	0	26	0	26	0.1	\$10,812.33	100%	100%	0%	0%	100%
	MHS	Digital Design	X	59	59	0	39	20	59	0.1	\$16,218.50	100%	66%	34%	0%	100%
	RHS	Digital Design	X	11	11	0	8	3	11	0.1	\$3,326.87	100%	73%	27%	0%	100%
	RHS	Digital Media/MM	X	26	26	0	6	20	26	0.1	\$2,495.15	100%	23%	77%	0%	100%
	SHS	Comm Tech	X	19	19	0	0	19	19	0.1	\$0.00	100%	0%	100%	0%	100%
VHS	Digital Media/MM	X	49	49	0	34	15	49	0.1	\$14,139.21	100%	69%	31%	0%	100%	
VHS	Digital Media/MM	X	50	50	0	41	9	50	0.1	\$17,050.22	100%	82%	18%	0%	100%	
VHS	Comm Tech	X	2	2	0	2	0	2	0.1	\$831.72	100%	100%	0%	0%	100%	
Adobe: Photoshop				397	396	0	235	161	396		\$97,726.87	100%	59%	41%	0%	100%
Adobe: Premier Pro	VHS	Comm Tech	X	3	3	0	3	0	3	0.1	\$1,247.58	100%	100%	0%	0%	100%
	VHS	Comm Tech	X	2	2	0	2	0	2	0.1	\$831.72	100%	100%	0%	0%	100%
Adobe: Premier Pro				5	5	0	5	0	5		\$2,079.30	100%	100%	0%	0%	100%

2014-15 High School Industry Certification By Assessment

Assessment	School	Program	School Grade	# Students Identified	# Participants	# In Progress	# Passing	# Failing	# Completing Participants	Funding Weights	Potential Funding \$	% Participants	% Passing	% Failing	% In Progress	% Completing Participants
ASE MLR G-1	MIHS	Automotive Service Tech	X	2	2	0	0	2	2	0.2	\$0.00	100%	0%	100%	0%	100%
	RHS	Automotive Service Tech	X	2	2	0	0	2	2	0.2	\$0.00	100%	0%	100%	0%	100%
	HHS	Automotive Service Tech	X	2	2	0	1	1	2	0.2	\$831.72	100%	50%	50%	0%	100%
	SHS	Automotive Service Tech	X	1	1	0	1	0	1	0.2	\$831.72	100%	100%	0%	0%	100%
		ASE MLR G-1			7	7	0	2	5	7		\$1,663.44	100%	29%	71%	0%
	CHS	Automotive Collision		26	26	0	5	21	26	0	\$0.00	100%	19%	81%	0%	100%
		ASE Student Assessments		26	26	0	5	21	26		\$0.00	100%	19%	81%	0%	100%
Autodesk - Certified User AutoCAD	AHS	Drafting	X	4	4	0	1	3	4	0.2	\$831.72	100%	25%	75%	0%	100%
	CHS	Drafting	X	14	14	0	8	6	14	0.2	\$6,653.74	100%	57%	43%	0%	100%
	EGHS	Drafting	X	27	27	0	16	11	27	0.2	\$13,307.49	100%	59%	41%	0%	100%
	HHS	Drafting	X	19	19	0	10	9	19	0.2	\$8,317.18	100%	53%	47%	0%	100%
	MIHS	Drafting	X	5	5	0	1	4	5	0.2	\$831.72	100%	20%	80%	0%	100%
	PBMS	Drafting	X	12	12	0	10	2	12	0.2	\$8,317.18	100%	83%	17%	0%	100%
	RHS	Drafting	X	18	18	0	15	3	18	0.2	\$12,475.77	100%	83%	17%	0%	100%
	SCHS	Drafting	X	14	14	0	14	0	14	0.2	\$11,644.05	100%	100%	0%	0%	100%
	SHS	Drafting	X	34	34	0	33	1	34	0.2	\$27,446.69	100%	97%	3%	0%	100%
	Autodesk - Certified User AutoCAD			147	147	0	108	39	147		\$89,825.54	100%	73%	27%	0%	100%
Autodesk - Certified User Inventor	MIHS	Drafting	X	1	1	0	0	1	1	0.2	\$0.00	100%	0%	100%	0%	100%
	MIHS	PLTW - ENGINEERING	X	38	38	0	29	9	38	0.2	\$24,119.82	100%	76%	24%	0%	100%
	SCHS	Drafting	X	23	23	0	23	0	23	0.2	\$19,129.51	100%	100%	0%	0%	100%
		Autodesk - Certified User Inventor			62	62	0	52	10	62		\$43,249.34	100%	84%	16%	0%
Autodesk - Certified User Revit	MIHS	Drafting	X	1	1	0	1	0	1	0.2	\$831.72	100%	100%	0%	0%	100%
	SCHS	Drafting	X	23	23	0	23	0	23	0.2	\$19,129.51	100%	100%	0%	0%	100%
		Autodesk - Certified User Revit			24	24	0	24	0	24		\$19,961.23	100%	100%	0%	0%
AVID	BHS	TV Production	X	80	80	45	35	0	35	0.1	\$14,555.07	100%	100%	0%	56%	44%
	EHS	TV Production	X	22	22	11	10	1	11	0.1	\$4,158.59	100%	91%	9%	50%	50%
	SCHS	TV Production	X	41	41	29	5	7	12	0.1	\$2,079.30	100%	42%	58%	71%	29%
	THS	TV Production	X	72	72	67	5	0	5	0.1	\$2,079.30	100%	100%	0%	93%	7%
	VHS	TV Production	X	50	50	0	20	30	50	0.1	\$8,317.18	100%	40%	60%	0%	100%
		AVID			265	265	152	75	38	113		\$31,189.43	100%	66%	34%	57%
C N A	AHS	Patient Care Assisting	X	36	36	0	35	1	36	0.1	\$14,555.07	100%	97%	3%	0%	100%
	BHS	Patient Care Assisting	X	15	15	0	14	1	15	0.1	\$5,822.03	100%	93%	7%	0%	100%
	MHS	Patient Care Assisting	X	15	15	0	15	0	15	0.1	\$6,237.89	100%	100%	0%	0%	100%
	PBMS	Patient Care Assisting	X	15	15	0	15	0	15	0.1	\$6,237.89	100%	100%	0%	0%	100%
	RHS	Patient Care Assisting	X	14	14	0	14	0	14	0.1	\$5,822.03	100%	100%	0%	0%	100%
	THS	Patient Care Assisting	X	37	37	0	36	1	37	0.1	\$14,970.92	100%	97%	3%	0%	100%
		C N A			132	132	0	129	3	132		\$53,645.81	100%	98%	2%	0%
Chief Architect Apprentice	HHS	Interior Design	X	7	7	0	5	2	7	0.2	\$4,158.59	100%	71%	29%	0%	100%
	VHS	Interior Design	X	12	12	0	11	1	12	0.2	\$9,148.90	100%	92%	8%	0%	100%
		Chief Architect Apprentice			19	19	0	16	3	19		\$13,307.49	100%	84%	16%	0%

2014-15 High School Industry Certification By Assessment

Assessment	School	Program	School Grade	# Students Identified	# Participants	# In Progress	# Passing	# Failing	# Completing Participants	Funding Weights	Potential Funding \$	% Participants	% Passing	% Failing	% In Progress	% Completing Participants	
CMAA	BHS	Health & Wellness	X	36	36	0	36	0	36	0.1	\$14,970.92	100%	100%	0%	0%	100%	
	CHS	Health & Wellness	X	12	12	0	6	6	12	0.1	\$2,495.15	100%	50%	50%	0%	100%	
	EGHS	Health & Wellness	X	15	15	0	15	0	15	0.1	\$6,237.89	100%	100%	0%	0%	100%	
	HHS	Health & Wellness	X	51	51	0	37	14	51	0.1	\$15,386.78	100%	73%	27%	0%	100%	
	HHS	Medical Admin Specialist	X	24	24	0	15	9	24	0.1	\$6,237.89	100%	63%	38%	0%	100%	
	VHS	Health Science - Dental	X	29	29	0	29	0	29	0.1	\$12,059.91	100%	100%	0%	0%	100%	
		CMAA			167	167	0	138	29	167		\$57,388.54	100%	83%	17%	0%	100%
CPR/AED/BLS for Healthcare Providers	EGHS	Health & Wellness		13	13	0	13	0	13	0	\$0.00	100%	100%	0%	0%	100%	
	AHS	First Responder		39	39	0	39	0	39	0	\$0.00	100%	100%	0%	0%	100%	
	AHS	Patient Care Assisting		62	62	0	62	0	62	0	\$0.00	100%	100%	0%	0%	100%	
	BHS	Health & Wellness		35	35	0	35	0	35	0	\$0.00	100%	100%	0%	0%	100%	
	HHS	Health & Wellness		34	34	0	34	0	34	0	\$0.00	100%	100%	0%	0%	100%	
	THS	Patient Care Assisting		37	37	0	37	0	37	0	\$0.00	100%	100%	0%	0%	100%	
	THS	Patient Care Assisting		55	55	0	55	0	55	0	\$0.00	100%	100%	0%	0%	100%	
	VHS	Health Science - Dental		30	30	0	30	0	30	0	\$0.00	100%	100%	0%	0%	100%	
		CPR/AED/BLS for Healthcare Providers			305	305	0	305	0	305		\$0.00	100%	100%	0%	0%	100%
	AHS	First Responder	X	16	16	0	13	3	16	0.1	\$5,406.17	100%	81%	19%	0%	100%	
		EMR			16	16	0	13	3	16		\$5,406.17	100%	81%	19%	0%	100%
FLADA	CHS	Automotive Collision	X	12	12	0	9	3	12	0.1	\$3,742.73	100%	75%	25%	0%	100%	
	EGHS	Automotive Service Tech	X	31	31	0	16	15	31	0.1	\$6,653.74	100%	52%	48%	0%	100%	
	HHS	Automotive Service Tech	X	50	50	0	36	14	50	0.1	\$14,970.92	100%	72%	28%	0%	100%	
	MIHS	Automotive Service Tech	X	25	25	0	17	8	25	0.1	\$7,069.60	100%	68%	32%	0%	100%	
	RHS	Automotive Service Tech	X	30	30	0	23	7	30	0.1	\$9,564.76	100%	77%	23%	0%	100%	
	SHS	Automotive Service Tech	X	41	41	0	16	25	41	0.1	\$6,653.74	100%	39%	61%	0%	100%	
	THS	Automotive Service Tech	X	33	33	0	28	5	33	0.1	\$11,644.05	100%	85%	15%	0%	100%	
		FLADA			222	222	0	145	77	222		\$60,299.56	100%	65%	35%	0%	100%
	CBHS	GIS Technology	X	2	2	0	2	0	2	0.1	\$831.72	100%	100%	0%	0%	100%	
	GIS Technician			2	2	0	2	0	2		\$831.72	100%	100%	0%	0%	100%	
Intro to Childcare Training	EGHS	Early Childhood Ed		15	15	10	5	0	5	0	\$0.00	100%	0%	0%	67%	33%	
	MIHS	Early Childhood Ed		23	23	15	8	0	8	0	\$0.00	100%	0%	0%	65%	35%	
	PBMS	Early Childhood Ed		19	19	15	4	0	4	0	\$0.00	100%	0%	0%	79%	21%	
	SHS	Early Childhood Ed		27	27	20	7	0	7	0	\$0.00	100%	0%	0%	74%	26%	
	VHS	Early Childhood Ed		23	23	14	9	0	9	0	\$0.00	100%	0%	0%	61%	39%	
		Intro to Childcare Training			107	107	74	33	0	33			100%	0%	0%	69%	31%
Intuit: Quick Books	CHS	Accounting	X	3	3	0	1	2	3	0.2	\$831.72	100%	33%	67%	0%	100%	
	MHS	Accounting	X	2	2	0	2	0	2	0.2	\$1,663.44	100%	100%	0%	0%	100%	
		Intuit: Quick Books			5	5	0	3	2	5		\$2,495.15	100%	60%	40%	0%	100%

2014-15 High School Industry Certification By Assessment

Assessment	School	Program	School Grade	# Students Identified	# Participants	# In Progress	# Passing	# Failing	# Completing Participants	Funding Weights	Potential Funding \$	% Participants	% Passing	% Failing	% In Progress	% Completing Participants
MOS Bundle	AHS	Admin Office Specialist	X	50	50	38	11	1	12	0.2	\$9,148.90	100%	92%	8%	76%	24%
	Adult	CCC	X	4	4	0	4	0	4	0.2	\$3,326.87	100%	100%	0%	0%	100%
	CBHS	Int'l Business	X	51	51	26	24	1	25	0.2	\$19,961.23	100%	96%	4%	51%	49%
	EGHS	CCC	X	118	118	113	5	0	5	0.2	\$4,158.59	100%	100%	0%	96%	4%
	HHS	Business S & Mgmt	X	122	122	102	19	1	20	0.2	\$15,802.64	100%	95%	5%	84%	16%
	HHS	CCC	X	61	61	52	7	2	9	0.2	\$5,822.03	100%	78%	22%	85%	15%
	MHS	Finance Academy	X	40	40	9	31	0	31	0.2	\$25,783.26	100%	100%	0%	23%	78%
	MHS	Finance Academy	X	7	7	0	7	0	7	0.2	\$5,822.03	100%	100%	0%	0%	100%
	MHS	Finance Academy	X	32	32	23	8	1	9	0.2	\$6,653.74	100%	89%	11%	72%	28%
	MIHS	Admin Office Specialist	X	23	23	9	14	0	14	0.2	\$11,644.05	100%	0%	0%	39%	61%
	SCHS	Admin Office Specialist	X	70	70	42	28	0	28	0.2	\$23,288.10	100%	100%	0%	60%	40%
	SHS	Business Software	X	20	20	2	18	0	18	0.2	\$14,970.92	100%	100%	0%	10%	90%
	VHS	Finance Academy	X	110	110	62	40	8	48	0.2	\$33,268.72	100%	83%	17%	56%	44%
	VHS	Finance Academy	X	118	118	72	43	3	46	0.2	\$35,763.87	100%	93%	7%	61%	39%
	MTA Windows OS Fundamentals	PBMS	Business Software Apps	X	10	10	9	1	0	1	0.2	\$831.72	100%	100%	0%	90%
		MOS Bundle		836	836	559	260	17	277		\$216,246.68	100%	94%	6%	67%	33%
CHS		PC Support	X	1	1	0	1	0	1	0.1	\$415.86	100%	100%	0%	0%	100%
		MTA Windows Network Security		1	1	0	1	0	1		\$415.86	100%	100%	0%	0%	100%
CHS		PC Support	X	2	2	0	1	1	2	0.1	\$415.86	100%	50%	50%	0%	100%
HHS		PC Support	X	15	15	0	6	9	15	0.1	\$2,495.15	100%	40%	60%	0%	100%
		MTA Windows OS Fundamentals		17	17	0	7	10	17		\$2,911.01	100%	41%	59%	0%	100%
CHS		PC Support	X	1	1	0	0	1	1	0.1	\$0.00	100%	0%	100%	0%	100%
		MTA Windows Server		1	1	0	0	1	1		\$0.00	100%	0%	100%	0%	100%
MTA Windows Server Admin Fundamentals		HHS	PC Support	X	2	2	0	2	0	2	0.1	\$831.72	100%	100%	0%	0%
		MTA Windows Server Admin Fundamentals		2	2	0	2	0	2		\$831.72	100%	100%	0%	0%	100%
	SCHS	A/C Refrig & Heat	X	7	7	5	2	0	2	0.2	\$1,663.44	100%	100%	0%	71%	29%
		NATE		7	7	5	2	0	2		\$1,663.44	100%	100%	0%	71%	29%
	SCHS	A/C Refrig & Heat	X	21	21	10	11	0	11	0.2	\$9,148.90	100%	100%	0%	48%	52%
		NCCER HVAC		21	21	10	11	0	11		\$9,148.90	100%	100%	0%	48%	52%
NCCER Carpentry	AHS	Construction Tech	X	71	71	71	0	0	0	0.2	\$0.00	100%	0%	0%	100%	0%
	MHS	Construction Tech	X	102	102	101	1	0	1	0.2	\$831.72	100%	100%	0%	99%	1%
	PBMS	Construction Tech	X	74	74	74	0	0	0	0.2	\$0.00	100%	0%	0%	100%	0%
		NCCER Carpentry		247	247	246	1	0	1		\$831.72	100%	100%	0%	100%	0%
NOCTI - Apparel & Text Prod & Mer	CBHS	Fashion Design Services		9	9	0	9	0	9	0	\$0.00	100%	100%	0%	0%	100%
	MHS	Fashion Design Services		7	7	0	7	0	7	0	\$0.00	100%	100%	0%	0%	100%
	PBMS	Fashion Design Services		12	12	0	12	0	12	0	\$0.00	100%	100%	0%	0%	100%
	RHS	Fashion Design Services		5	5	0	5	0	5	0	\$0.00	100%	100%	0%	0%	100%
	SHS	Fashion Design Services		15	15	0	15	0	15	0	\$0.00	100%	100%	0%	0%	100%

2014-15 High School Industry Certification By Assessment

Assessment	School	Program	School Grade	# Students Identified	# Participants	# In Progress	# Passing	# Failing	# Completing Participants	Funding Weights	Potential Funding \$	% Participants	% Passing	% Failing	% In Progress	% Completing Participants
	THS	Fashion Design Services		16	16	0	16	0	16	0	\$0.00	100%	100%	0%	0%	100%
		NOCTI - Apparel & Text Prod & Mer		64	64	0	64	0	64	0	\$0.00	100%	100%	0%	0%	100%
NOCTI - Criminal Justice	PBMS	Criminal Justice		25	25	0	25	0	25	0	\$0.00	100%	100%	0%	0%	100%
	RHS	Criminal Justice		11	11	0	11	0	11	0	\$0.00	100%	100%	0%	0%	100%
		NOCTI - Criminal Justice		36	36	0	36	0	36	0	\$0.00	100%	100%	0%	0%	100%
	AHS	Construction Tech		34	34	0	34	0	34	0	\$0.00	100%	100%	0%	0%	100%
		OSHA-10		34	34	0	34	0	34	0	\$0.00	100%	100%	0%	0%	100%
SafeStaff Food Handler Certification	SCHS	Teacher Assisting		13	13	0	13	0	13	0	\$0.00	100%	100%	0%	0%	100%
		ParaPro		13	13	0	13	0	13	0	\$0.00	100%	100%	0%	0%	100%
	BHS	Culinary Arts	X	23	23	0	23	0	23	0.2	\$19,129.51	100%	100%	0%	0%	100%
		ProStart Certificate of Achievement		23	23	0	23	0	23		\$19,129.51	100%	100%	0%	0%	100%
	BHS	Culinary Arts		60	60	0	60	0	60	0	\$0.00	100%	100%	0%	0%	100%
	BHS	Culinary Arts		63	63	0	63	0	63	0	\$0.00	100%	100%	0%	0%	100%
	CHS	Culinary Arts		98	98	0	98	0	98	0	\$0.00	100%	100%	0%	0%	100%
	MHS	Culinary Arts		63	63	0	63	0	63	0	\$0.00	100%	100%	0%	0%	100%
	MHS	Culinary Arts		95	95	0	95	0	95	0	\$0.00	100%	100%	0%	0%	100%
	PBMS	Culinary Arts		53	53	0	53	0	53	0	\$0.00	100%	100%	0%	0%	100%
	THS	Culinary Arts		75	75	0	75	0	75	0	\$0.00	100%	100%	0%	0%	100%
	SafeStaff Food Handler Certification		507	507	0	507	0	507	0	\$0.00	100%	100%	0%	0%	100%	
ServSafe Manager	AHS	Food Science	X	108	108	0	39	69	108	0.2	\$32,437.00	100%	36%	64%	0%	100%
	BHS	Culinary Arts	X	41	41	0	23	18	41	0.2	\$19,129.51	100%	56%	44%	0%	100%
	BHS	Culinary Arts	X	46	45	0	39	6	45	0.2	\$32,437.00	98%	87%	13%	0%	100%
	CHS	Culinary Arts	X	26	26	0	4	22	26	0.2	\$3,326.87	100%	15%	85%	0%	100%
	MHS	Culinary Arts	X	44	44	0	36	8	44	0.2	\$29,941.85	100%	82%	18%	0%	100%
	MHS	Food Science	X	23	23	0	7	16	23	0.2	\$5,822.03	100%	30%	70%	0%	100%
	MIHS	Food Science	X	26	26	0	12	14	26	0.2	\$9,980.62	100%	46%	54%	0%	100%
	PBMS	Culinary Arts	X	35	35	0	23	12	35	0.2	\$19,129.51	100%	66%	34%	0%	100%
	PBMS	Early Childhood Ed	X	6	6	0	0	6	6	0.2	\$0.00	100%	0%	100%	0%	100%
	RHS	Hosp & Tourism	X	26	26	0	12	14	26	0.2	\$9,980.62	100%	46%	54%	0%	100%
	SHS	Early Childhood Ed	X	9	9	0	0	9	9	0.2	\$0.00	100%	0%	100%	0%	100%
	SHS	Food Science	X	29	29	0	16	13	29	0.2	\$13,307.49	100%	55%	45%	0%	100%
	THS	Culinary Arts	X	58	58	0	33	25	58	0.2	\$27,446.69	100%	57%	43%	0%	100%
		ServSafe Manager		477	476	0	244	232	476		\$202,939.19	100%	51%	49%	0%	100%
Solidworks	EGHS	Marine Tech		19	19	0	12	7	19	0	\$0.00	100%	63%	37%	0%	100%
		SkillsUSA Marine		19	19	0	12	7	19		\$0.00	100%	63%	37%	0%	100%
	AHS	Engineering Technology	X	8	8	0	2	6	8	0.1	\$831.72	100%	25%	75%	0%	100%
	BHS	Drafting	X	26	26	0	23	3	26	0.1	\$9,564.76	100%	88%	12%	0%	100%
	BHS	Engineering Technology	X	36	36	0	14	22	36	0.1	\$5,822.03	100%	39%	61%	0%	100%
	HHS	Automation & Production	X	11	11	0	0	11	11	0.1	\$0.00	100%	0%	0%	0%	0%
	MHS	Engineering Technology	X	34	34	0	28	6	34	0.1	\$11,644.05	100%	82%	18%	0%	100%

2014-15 High School Industry Certification By Assessment

Assessment	School	Program	School Grade		# Students Identified	# Participants	# In Progress	# Passing	# Failing	# Completing Participants	Funding Weights	Potential Funding \$	% Participants	% Passing	% Failing	% In Progress	% Completing Participants
			X														
	PBMS	Engineering Technology	X		10	10	0	8	2	10	0.1	\$3,326.87	100%	80%	20%	0%	100%
	SCHS	Engineering Technology		X	18	18	0	17	1	18	0.1	\$7,069.60	100%	94%	6%	0%	100%
		Solidworks			143	143	0	92	51	143		\$38,259.03	100%	64%	36%	0%	100%

2014-15 High School Industry Certification By Assessment

Assessment	School	Program	School Grade	# Students Identified	# Participants	# In Progress	# Passing	# Failing	# Completing Participants	Funding Weights	Potential Funding \$	% Participants	% Passing	% Failing	% In Progress	% Completing Participants
	PBMS	Engineering Technology	X	1	1	0	1	0	1	0	\$0.00	100%	100%	0%	0%	100%
		Solidworks - Professional		1	1	0	1	0	1	0	\$0.00	100%	100%	0%	0%	100%
Staff Credential	EGHS	Early Childhood Ed		15	15	10	5	0	5	0	\$0.00	100%	100%	0%	67%	33%
	MIHS	Early Childhood Ed		23	23	15	8	0	8	0	\$0.00	100%	100%	0%	65%	35%
	PBMS	Early Childhood Ed		19	19	15	4	0	4	0	\$0.00	100%	100%	0%	79%	21%
	SHS	Early Childhood Ed		27	27	20	7	0	7	0	\$0.00	100%	100%	0%	74%	26%
	VHS	Early Childhood Ed		23	23	14	9	0	9	0	\$0.00	100%	0%	0%	61%	39%
		Staff Credential			107	107	74	33	0	33	0	\$0.00	100%	100%	0%	69%
Water Treatment Plant Operator C	HHS	Environmental Water	X	27	26	0	3	20	23	0.1	\$1,247.58	96%	13%	87%	0%	88%
		Water Treatment Plant Operator C		27	23	0	3	20	23		\$1,247.58	85%	13%	87%	0%	100%

Industry Certification By Program



This page intentionally left blank.

2014-15 High School Industry Certification By Program

Program	School	Assessment	Teacher of Record	School Grade	# Students Identified	# Participants	# In Progress	# Passing	# Failing	# Completing Participants	Funding Weights	Potential Funding \$	% Participants	% Passing	% Failing	% In Progress	% Completing Participants
A/C Refrig & Heat	SCHS	NATE	Mount	X	7	7	5	2	0	2	0.2	\$1,663.44	100%	100%	0%	71%	29%
	SCHS	NCCER	Mount	X	21	21	10	11	0	11	0.2	\$9,148.90	100%	100%	0%	48%	52%
	SCHS	EPA	Mount		39	39	0	39	0	39	0	\$0.00	100%	100%	0%	0%	100%
		A/C Refrig & Heat			67	67	15	52	0	52		\$10,812.33	100%	100%	0%	22%	78%
Accounting	MHS	Intuit: Quickbooks	Fannon	X	2	2	0	2	0	2	0.2	\$1,663.44	100%	100%	0%	0%	100%
	CHS	Intuit: Quickbooks	Deese	X	3	3	0	1	2	3	0.2	\$831.72	100%	33%	67%	0%	100%
		Accounting			5	5	0	3	2	5		\$2,495.15	100%	60%	40%	0%	100%
Admin Office Specialist	AHS	MOS Bundle	Ament	X	50	50	38	11	1	12	0.2	\$9,148.90	100%	92%	8%	76%	24%
	HHS	MOS Bundle	Sabdul	X	122	122	102	19	1	20	0.2	\$15,802.64	100%	95%	5%	84%	16%
	MIHS	MOS Bundle	Burr	X	23	23	9	14	0	14	0.2	\$11,644.05	100%	0%	0%	39%	61%
	PBMS	MOS Bundle	Loyd	X	10	10	9	1	0	1	0.2	\$831.72	100%	100%	0%	90%	10%
	SCHS	MOS Bundle	Stoppelbein	X	70	70	42	28	0	28	0.2	\$23,288.10	100%	100%	0%	60%	40%
	SHS	MOS Bundle	Brooks	X	20	20	2	18	0	18	0.2	\$14,970.92	100%	100%	0%	10%	90%
		Admin Office Specialist			295	295	202	91	1	93		\$75,686.34	100%	98%	1%	68%	32%
Automation & Production	HHS	Solidworks	Washington	X	11	11	0	0	11	11	0.1	\$0.00	100%	0%	0%	0%	0%
		Automation & Production			11	11	0	0	11	11		\$0.00	100%	0%	0%	0%	0%
Automotive Collision	CHS	ASE Student Assessments	Riffe		26	26	0	5	21	26	0	\$0.00	100%	19%	81%	0%	100%
	CHS	FLADA	Riffe	X	12	12	0	9	3	12	0.1	\$3,742.73	100%	75%	25%	0%	100%
		Automotive Collision			38	38	0	14	24	38		\$3,742.73					
Automotive Maint. And Lgt Repair	EGHS	FLADA	Younger	X	31	31	0	16	15	31	0.1	\$6,653.74	100%	52%	48%	0%	100%
	HHS	FLADA	Broud	X	50	50	0	36	14	50	0.1	\$14,970.92	100%	72%	28%	0%	100%
	HHS	ASE MLR G-1	Broud	X	2	2	0	1	1	2	0.2	\$831.72	100%	50%	50%	0%	100%
	MIHS	FLADA	Chapman	X	25	25	0	17	8	25	0.1	\$7,069.60	100%	68%	32%	0%	100%
	MIHS	ASE MLR G-1	Chapman	X	2	2	0	0	2	2	0.2	\$0.00	100%	0%	100%	0%	100%
	RHS	FLADA	Sebetka	X	30	30	0	23	7	30	0.1	\$9,564.76	100%	77%	23%	0%	100%
	RHS	ASE MLR G-1	Sebetka	X	2	2	0	0	2	2	0.2	\$0.00	100%	0%	100%	0%	100%
	SHS	FLADA	Pitts	X	41	41	0	16	25	41	0.1	\$6,653.74	100%	39%	61%	0%	100%
	SHS	ASE MLR G-1	Pitts	X	1	1	0	1	0	1	0.2	\$831.72	100%	100%	0%	0%	100%
	THS	FLADA	Soros	X	33	33	0	28	5	33	0.1	\$11,644.05	100%	85%	15%	0%	100%
		Automotive			217	217	0	138	79	217		\$58,220.26	100%	64%	36%	0%	100%
CCC	Adult Ed	MOS Bundle	Owen	X	4	4	0	4	0	4	0.2	\$3,326.87	100%	100%	0%	0%	100%
	EGHS	MOS Bundle	Barton	X	118	118	113	5	0	5	0.2	\$4,158.59	100%	100%	0%	96%	4%
	HHS	MOS Bundle	Stengel	X	61	61	52	7	2	9	0.2	\$5,822.03	100%	78%	22%	85%	15%
		CCC			183	183	165	16	2	18		\$13,307.49	100%	89%	11%	90%	10%

2014-15 High School Industry Certification By Program

Program	School	Assessment	Teacher of Record	School Grade	# Students Identified	# Participants	# In Progress	# Passing	# Failing	# Completing Participants	Funding Weights	Potential Funding \$	% Participants	% Passing	% Failing	% In Progress	% Completing Participants
Comm Tech	BHS	Adobe: Photoshop	Arico	X	21	20	0	2	18	20	0.1	\$831.72	95%	10%	90%	0%	100%
	BHS	Adobe: Illustrator	Arico	X	4	4	0	3	1	4	0.1	\$1,247.58	100%	75%	25%	0%	100%
	BHS	Adobe: InDesign	Arico	X	26	22	0	12	10	22	0.1	\$4,990.31	85%	55%	45%	0%	100%
	PBMS	Adobe: Illustrator	Fine	X	34	34	0	11	23	34	0.1	\$4,574.45	100%	32%	68%	0%	100%
	SHS	Adobe: Dreamweaver	Stratton	X	1	1	0	0	1	1	0.2	\$0.00	100%	0%	100%	0%	100%
	SHS	Adobe: Photoshop	Stratton	X	19	19	0	0	19	19	0.1	\$0.00	100%	0%	100%	0%	100%
	SHS	Adobe: Illustrator	Stratton	X	35	35	0	30	5	35	0.1	\$12,475.77	100%	86%	14%	0%	100%
	SHS	Adobe: InDesign	Stratton	X	22	22	0	17	5	22	0.1	\$7,069.60	100%	77%	23%	0%	100%
	VHS	Adobe: Premier Pro	Cole	X	3	3	0	3	0	3	0.1	\$1,247.58	100%	100%	0%	0%	100%
	VHS	Adobe: Illustrator	Cole	X	58	58	0	30	28	58	0.1	\$12,475.77	100%	52%	48%	0%	100%
	VHS	Adobe: InDesign	Cole	X	57	57	0	40	17	57	0.1	\$16,634.36	100%	70%	30%	0%	100%
	VHS	Adobe: Illustrator	Peregrina	X	78	78	0	75	3	78	0.1	\$31,189.43	100%	96%	4%	0%	100%
	VHS	Adobe: InDesign	Peregrina	X	1	1	0	1	0	1	0.1	\$415.86	100%	100%	0%	0%	100%
	VHS	Adobe: Photoshop	Peregrina	X	2	2	0	2	0	2	0.1	\$831.72	100%	100%	0%	0%	100%
VHS	Adobe: Premier Pro	Peregrina	X	2	2	0	2	0	2	0.1	\$831.72	100%	100%	0%	0%	100%	
		Comm Tech			363	358	0	228	130	358		\$94,815.85	99%	64%	36%	0%	100%
Construction Tech	AHS	OSHA-10	Dunlap		34	34	0	34	0	34	0	\$0.00	100%	100%	0%	0%	100%
	AHS	NCCER Carpentry	Dunlap	X	71	71	71	0	0	0	0.2	\$0.00	100%	0%	0%	100%	0%
	MHS	NCCER Carpentry	Slate	X	102	102	101	1	0	1	0.2	\$831.72	100%	100%	0%	99%	1%
	PBMS	NCCER Carpentry	Shalosky	X	74	74	74	0	0	0	0.2	\$0.00	100%	0%	0%	100%	0%
		Construction Tech			281	281	246	35	0	35		\$831.72	100%	0%	0%	88%	12%
Criminal Justice	PBMS	NOCTI - Criminal Justice	Morrison		25	25	0	25	0	25	0	\$0.00	100%	100%	0%	0%	100%
	RHS	NOCTI - Criminal Justice	Tardiff		11	11	0	11	0	11	0	\$0.00	100%	100%	0%	0%	100%
		Criminal Justice			36	36	0	36	0	36		\$0.00	100%	100%	0%	0%	100%
Culinary Arts	BHS	SafeStaff Food Handler Certification	Cox		60	60	0	60	0	60	0	\$0.00	100%	100%	0%	0%	100%
	BHS	ServSafe Manager	Cox	X	41	41	0	23	18	41	0.2	\$19,129.51	100%	56%	44%	0%	100%
	BHS	ProStart Certificate of Achievement	Gray	X	23	23	0	23	0	23	0.2	\$19,129.51	100%	100%	0%	0%	100%
	BHS	SafeStaff Food Handler Certification	Gray		63	63	0	63	0	63	0	\$0.00	100%	100%	0%	0%	100%
	BHS	ServSafe Manager	Gray	X	46	45	0	39	6	45	0.2	\$32,437.00	98%	87%	13%	0%	100%
	CHS	SafeStaff Food Handler Certification	Knight		98	98	0	98	0	98	0	\$0.00	100%	100%	0%	0%	100%
	CHS	ServSafe Manager	Knight	X	26	26	0	4	22	26	0.2	\$3,326.87	100%	15%	85%	0%	100%
	MHS	SafeStaff Food Handler Certification	Ferguson		63	63	0	63	0	63	0	\$0.00	100%	100%	0%	0%	100%
	MHS	ServSafe Manager	Ferguson	X	44	44	0	36	8	44	0.2	\$29,941.85	100%	82%	18%	0%	100%
	MHS	SafeStaff Food Handler Certification	Ollinger		95	95	0	95	0	95	0	\$0.00	100%	100%	0%	0%	100%
	PBMS	SafeStaff Food Handler Certification	Ho		53	53	0	53	0	53	0	\$0.00	100%	100%	0%	0%	100%
	PBMS	ServSafe Manager	Ho	X	35	35	0	23	12	35	0.2	\$19,129.51	100%	66%	34%	0%	100%
	THS	SafeStaff Food Handler Certification	Hietpas		75	75	0	75	0	75	0	\$0.00	100%	100%	0%	0%	100%
	THS	ServSafe Manager	Hietpas	X	58	58	0	33	25	58	0.2	\$27,446.69	100%	57%	43%	0%	100%
		Culinary Arts			780	779	0	688	91	779		\$150,540.96	100%	88%	12%	0%	100%

2014-15 High School Industry Certification By Program

Program	School	Assessment	Teacher of Record	School Grade	# Students Identified	# Participants	# In Progress	# Passing	# Failing	# Completing Participants	Funding Weights	Potential Funding \$	% Participants	% Passing	% Failing	% In Progress	% Completing Participants
Digital Design	AHS	Adobe: Illustrator	Reda	X	19	19	0	18	1	19	0.1	\$7,485.46	100%	95%	5%	0%	100%
	AHS	Adobe: InDesign	Reda	X	37	37	0	27	10	37	0.1	\$11,228.19	100%	73%	27%	0%	100%
	AHS	Adobe: Photoshop	Reda	X	5	5	0	4	1	5	0.1	\$1,663.44	100%	80%	20%	0%	100%
	BHS	Adobe: Photoshop	Soto	X	34	34	0	22	12	34	0.1	\$9,148.90	100%	65%	35%	0%	100%
	BHS	Adobe: Illustrator	Soto	X	9	9	0	9	0	9	0.1	\$3,742.73	100%	100%	0%	0%	100%
	BHS	Adobe: InDesign	Soto	X	4	4	0	3	1	4	0.1	\$1,247.58	100%	75%	25%	0%	100%
	CHS	Adobe: InDesign	Leaman	X	3	3	0	1	2	3	0.1	\$415.86	100%	33%	67%	0%	100%
	EGHS	Adobe: Dreamweaver	Keener	X	1	1	0	1	0	1	0.2	\$831.72	100%	100%	0%	0%	100%
	EGHS	Adobe: Flash	Keener	X	47	47	0	22	25	47	0.2	\$18,297.80	100%	47%	53%	0%	100%
	EGHS	Adobe: Photoshop	Keener	X	71	71	0	40	31	71	0.1	\$16,634.36	100%	56%	44%	0%	100%
	EGHS	Adobe: Illustrator	Keener	X	10	10	0	9	1	10	0.1	\$3,742.73	100%	90%	10%	0%	100%
	EGHS	Adobe: InDesign	Keener	X	26	26	0	18	8	26	0.1	\$7,485.46	100%	69%	31%	0%	100%
	EHS	Adobe: InDesign	Taylor	X	11	11	0	10	1	11	0.1	\$4,158.59	100%	91%	9%	0%	0%
	MHS	Adobe: Photoshop	Forbes	X	26	26	0	26	0	26	0.1	\$10,812.33	100%	100%	0%	0%	100%
	MHS	Adobe: Flash	Forbes	X	7	7	0	7	0	7	0.2	\$5,822.03	100%	100%	0%	0%	100%
	MHS	Adobe: Illustrator	Forbes	X	9	9	0	9	0	9	0.1	\$3,742.73	100%	100%	0%	0%	100%
	MHS	Adobe: InDesign	Forbes	X	58	58	0	56	2	58	0.1	\$23,288.10	100%	97%	3%	0%	100%
	RHS	Adobe: Photoshop	Natali	X	59	59	0	39	20	59	0.1	\$16,218.50	100%	66%	34%	0%	100%
RHS	Adobe: Illustrator	Natali	X	34	34	0	19	15	34	0.1	\$7,901.32	100%	56%	44%	0%	100%	
RHS	Adobe: InDesign	Natali	X	20	14	0	1	13	14	0.1	\$415.86	70%	7%	93%	0%	100%	
RHS	Adobe: Photoshop	Shnault	X	11	11	0	8	3	11	0.1	\$3,326.87	100%	73%	27%	0%	100%	
RHS	Adobe: InDesign	Shnault	X	42	42	0	40	2	42	0.1	\$16,634.36	100%	95%	5%	0%	100%	
RHS	Adobe: Illustrator	Shnault	X	27	27	0	26	1	27	0.1	\$10,812.33	100%	96%	4%	0%	100%	
THS	Adobe: Illustrator	Benson	X	33	33	0	31	2	33	0.1	\$12,891.63	100%	94%	6%	0%	100%	
THS	Adobe: InDesign	Benson	X	48	48	0	43	5	48	0.1	\$17,881.94	100%	90%	10%	0%	100%	
Digital Design	Digital Design				651	645	0	489	156	645		\$215,830.82	99%	76%	24%	0%	100%
Digital Video	Adobe: Flash		Uhing	X	28	28	0	24	4	28	0.2	\$19,961.23	100%	86%	14%	0%	100%
Digital Video	Digital Video				28	28	0	24	4	28		\$19,961.23	100%	86%	14%	0%	100%
Digital Media/MM	Adobe: Photoshop		Stratton	X	26	26	0	6	20	26	0.1	\$2,495.15	100%	23%	77%	0%	100%
Digital Media/MM	Adobe: Photoshop		Cole	X	49	49	0	34	15	49	0.1	\$14,139.21	100%	69%	31%	0%	100%
Digital Media/MM	Adobe: Photoshop		Peregrina	X	50	50	0	41	9	50	0.1	\$17,050.22	100%	82%	18%	0%	100%
Digital Media/MM	Digital Media/MM				125	125	0	81	44	125		\$33,684.58	100%	65%	35%	0%	100%

2014-15 High School Industry Certification By Program

Program	School	Assessment	Teacher of Record	School Grade	# Students Identified	# Participants	# In Progress	# Passing	# Failing	# Completing Participants	Funding Weights	Potential Funding \$	% Participants	% Passing	% Failing	% In Progress	% Completing Participants	
Drafting	AHS	Autodesk - Certified User AutoCAD	Jackson	X	4	4	0	1	3	4	0.2	\$831.72	100%	25%	75%	0%	100%	
	BHS	Solidworks	Kimbrell	X	26	26	0	23	3	26	0.1	\$9,564.76	100%	88%	12%	0%	100%	
	CHS	Autodesk Certified User - AutoCad	Auxier	X	14	14	0	8	6	14	0.2	\$6,653.74	100%	57%	43%	0%	100%	
	EGHS	Autodesk - Certified User AutoCAD	Lustic	X	27	27	0	16	11	27	0.2	\$13,307.49	100%	59%	41%	0%	100%	
	HHS	Autodesk - Certified User AutoCAD	Flemming	X	19	19	0	10	9	19	0.2	\$8,317.18	100%	53%	47%	0%	100%	
	MIHS	Autodesk - Certified User AutoCAD	Haddock	X	5	5	0	1	4	5	0.2	\$831.72	100%	20%	80%	0%	100%	
	MIHS	Autodesk - Certified User Revit	Haddock	X	1	1	0	1	0	1	0.2	\$831.72	100%	100%	0%	0%	100%	
	MIHS	Autodesk - Inventor	Haddock	X	1	1	0	0	1	1	0.2	\$0.00	100%	0%	100%	0%	100%	
	PBMS	Autodesk - Certified User AutoCAD	Allen, D	X	12	12	0	10	2	12	0.2	\$8,317.18	100%	83%	17%	0%	100%	
	RHS	Autodesk - Certified User AutoCAD	Schooley	X	18	18	0	15	3	18	0.2	\$12,475.77	100%	83%	17%	0%	100%	
	SCHS	Autodesk - Certified User AutoCAD	Gannon	X	14	14	0	14	0	14	0.2	\$11,644.05	100%	100%	0%	0%	100%	
	SCHS	Autodesk - Certified User Revit	Gannon	X	23	23	0	23	0	23	0.2	\$19,129.51	100%	100%	0%	0%	100%	
	SCHS	Autodesk - Certified User Inventor	Gannon	X	23	23	0	23	0	23	0.2	\$19,129.51	100%	100%	0%	0%	100%	
SHS	Autodesk - Certified User AutoCAD	Galiszewski	X	34	34	0	33	1	34	0.2	\$27,446.69	100%	97%	3%	0%	100%		
		Drafting			221	221	0	178	43	221		\$138,481.05	100%	81%	19%	0%	100%	
Early Childhood Ed	EGHS	Staff Credential	Dilger		15	15	10	5	0	5	0	\$0.00	100%	100%	0%	0%	67%	33%
	EGHS	Intro to Childcare Training	Dilger		15	15	10	5	0	5	0	\$0.00	100%	0%	0%	0%	67%	33%
	MIHS	Staff Credential	Pearlman		23	23	15	8	0	8	0	\$0.00	100%	100%	0%	0%	65%	35%
	MIHS	Intro to Childcare Training	Pearlman		23	23	15	8	0	8	0	\$0.00	100%	0%	0%	0%	65%	35%
	PBMS	ECPC	Chappell		19	19	15	4	0	4	0	\$0.00	100%	100%	0%	0%	79%	21%
	PBMS	ServSafe Manager	Chappell	X	6	6	0	0	6	6	0.2	\$0.00	100%	0%	100%	0%	0%	100%
	PBMS	Intro to Childcare Training	Chappell		19	19	15	4	0	4	0	\$0.00	100%	0%	0%	0%	79%	21%
	SHS	ServSafe Manager	Schmid	X	9	9	0	0	9	9	0.2	\$0.00	100%	0%	100%	0%	0%	100%
	SHS	Staff Credential	Schmid		27	27	20	7	0	7	0	\$0.00	100%	100%	0%	0%	74%	26%
	SHS	Intro to Childcare Training	Schmid		27	27	20	7	0	7	0	\$0.00	100%	0%	0%	0%	74%	26%
	VHS	Staff Credential	Anderson		23	23	14	9	0	9	0	\$0.00	100%	0%	0%	0%	61%	39%
VHS	Intro to Childcare Training	Anderson		23	23	14	9	0	9	0	\$0.00	100%	0%	0%	0%	61%	39%	
		ServSafe - training materials	Anderson	X							0.2	\$0.00						
		Early Childhood Ed			229	229	148	66	15	81		\$0.00	100%	0%	0%	65%	35%	
Engineering Technology	AHS	Solidworks	Jackson	X	8	8	0	2	6	8	0.1	\$831.72	100%	25%	75%	0%	100%	
	BHS	Solidworks	Mitchell	X	36	36	0	14	22	36	0.1	\$5,822.03	100%	39%	61%	0%	100%	
	MHS	Solidworks	Gabeler	X	34	34	0	28	6	34	0.1	\$11,644.05	100%	82%	18%	0%	100%	
	PBMS	Solidworks	Allen, R	X	10	10	0	8	2	10	0.1	\$3,326.87	100%	80%	20%	0%	100%	
	PBMS	Solidworks - Professional	Allen, R	X	1	1	0	1	0	1	0	\$0.00	100%	100%	0%	0%	100%	
	SCHS	Solidworks	Reyes	X	18	18	0	17	1	18	0.1	\$7,069.60	100%	94%	6%	0%	100%	
		Solidworks			107	107	0	70	37	107		\$28,694.27	100%	65%	35%	0%	100%	
Environmental Water	HHS	Water Treatment Plant Operator C	Sutton	X	27	23	0	3	20	23	0.1	\$1,247.58	85%	13%	87%	0%	100%	
		Environmental Water			27	23	0	3	20	23		\$1,247.58	85%	13%	87%	0%	100%	

2014-15 High School Industry Certification By Program

Program	School	Assessment	Teacher of Record	School Grade	# Students Identified	# Participants	# In Progress	# Passing	# Failing	# Completing Participants	Funding Weights	Potential Funding \$	% Participants	% Passing	% Failing	% In Progress	% Completing Participants
Fashion Design Services	CBHS	NOCTI - Apparel & Text Prod & Mer	Lengyel		9	9	0	9	0	9	0	\$0.00	100%	100%	0%	0%	100%
	MHS	NOCTI - Apparel & Text Prod & Mer	Bollo		7	7	0	7	0	7	0	\$0.00	100%	100%	0%	0%	100%
	PBMS	NOCTI - Apparel & Text Prod & Mer	Baker		12	12	0	12	0	12	0	\$0.00	100%	100%	0%	0%	100%
	RHS	NOCTI - Apparel & Text Prod & Mer	Pingston		5	5	0	5	0	5	0	\$0.00	100%	100%	0%	0%	100%
	SHS	NOCTI - Apparel & Text Prod & Mer	Davinroy-Gray		15	15	0	15	0	15	0	\$0.00	100%	100%	0%	0%	100%
	THS	NOCTI - Apparel & Text Prod & Mer	Lawrence		16	16	0	16	0	16	0	\$0.00	100%	100%	0%	0%	100%
		Fashion Design Services			64	64	0	64	0	64	0	\$0.00	100%	100%	0%	0%	100%
Finance Academy	MHS	MOS Bundle	Angove	X	40	40	9	31	0	31	0.2	\$25,783.26	100%	100%	0%	23%	78%
	MHS	MOS Bundle	Fannon	X	7	7	0	7	0	7	0.2	\$5,822.03	100%	100%	0%	0%	100%
	MHS	MOS Bundle	Uhing	X	32	32	23	8	1	9	0.2	\$6,653.74	100%	89%	11%	72%	28%
	VHS	MOS Bundle	Brown	X	110	110	62	40	8	48	0.2	\$33,268.72	100%	83%	17%	56%	44%
	VHS	MOS Bundle	Gammella	X	118	118	72	43	3	46	0.2	\$35,763.87	100%	93%	7%	61%	39%
		Finance Academy			307	307	166	129	12	141	0.2	\$107,291.62	100%	91%	9%	54%	46%
First Responder	AHS	EMR	Byczek	X	16	16	0	13	3	16	0.1	\$5,406.17	100%	81%	19%	0%	100%
	AHS	CPR/AED/BLS for Healthcare Providers	Byczek		39	39	0	39	0	39	0	\$0.00	100%	100%	0%	0%	100%
		First Responder			55	55	0	52	3	55	0.2	\$5,406.17	100%	95%	5%	0%	100%
Food Science	AHS	ServSafe Manager	Morganthal	X	108	108	0	39	69	108	0.2	\$32,437.00	100%	36%	64%	0%	100%
	MHS	ServSafe Manager	Ollinger	X	23	23	0	7	16	23	0.2	\$5,822.03	100%	30%	70%	0%	100%
	MIHS	ServSafe Manager	Martin	X	26	26	0	12	14	26	0.2	\$9,980.62	100%	46%	54%	0%	100%
	SHS	ServSafe Manager	Thomas	X	29	29	0	16	13	29	0.2	\$13,307.49	100%	55%	45%	0%	100%
	VHS	ServSafe - training materials	Ralph	X							0.2	\$0.00					
		Food Science			186	186	0	74	112	186	0.2	\$61,547.13	100%	40%	60%	0%	100%
Gaming	PBMS	Adobe: Dreamweaver	Fine	X	3	3	0	1	2	3	0.2	\$831.72	100%	33%	67%	0%	100%
		Gaming			3	3	0	1	2	3	0.2	\$831.72	100%	33%	67%	0%	100%
GIS Technology	CBHS	GIS Technician	Gaudy	X	2	2	0	2	0	2	0.1	\$831.72	100%	100%	0%	0%	100%
		GIS Technology			2	2	0	2	0	2	0.1	\$831.72	100%	100%	0%	0%	100%
Health & Wellness	BHS	CMAA	Parr	X	36	36	0	36	0	36	0.1	\$14,970.92	100%	100%	0%	0%	100%
	BHS	CPR/AED/BLS for Healthcare Providers	Parr		35	35	0	35	0	35	0	\$0.00	100%	100%	0%	0%	100%
	CHS	CMAA	Doyle	X	12	12	0	6	6	12	0.1	\$2,495.15	100%	50%	50%	0%	100%
	EGHS	CMAA	McMahon	X	15	15	0	15	0	15	0.1	\$6,237.89	100%	100%	0%	0%	100%
	EGHS	CPR	Berry		13	13	0	13	0	13	0	\$0.00	100%	100%	0%	0%	100%
	HHS	CMAA	Luna	X	51	51	0	37	14	51	0.1	\$15,386.78	100%	73%	27%	0%	100%
	HHS	CPR/AED/BLS for Healthcare Providers	Luna		34	34	0	34	0	34	0	\$0.00	100%	100%	0%	0%	100%
		Health & Wellness			196	196	0	176	20	196	0.1	\$39,090.75	100%	90%	10%	0%	100%
Health Science - Dental	VHS	CMAA	Johnston	X	29	29	0	29	0	29	0.1	\$12,059.91	100%	100%	0%	0%	100%
	VHS	CPR/AED/BLS for Healthcare Providers	Johnston		30	30	0	30	0	30	0	\$0.00	100%	100%	0%	0%	100%
		Health Science - Dental			59	59	0	59	0	59	0.2	\$12,059.91	100%	100%	0%	0%	100%
Hosp & Tourism	RHS	ServSafe Manager	Kearns	X	26	26	0	12	14	26	0.2	\$9,980.62	100%	46%	54%	0%	100%
		Hosp & Tourism			26	26	0	12	14	26	0.2	\$9,980.62	100%	46%	54%	0%	100%
Interior Design	HHS	Chief Architect Apprentice	Flemming	X	7	7	0	5	2	7	0.2	\$4,158.59	100%	71%	29%	0%	100%
	VHS	Chief Architect Apprentice	Hosmer	X	12	12	0	11	1	12	0.2	\$9,148.90	100%	92%	8%	0%	100%
		Interior Design			19	19	0	16	3	19	0.2	\$13,307.49	100%	84%	16%	0%	100%

2014-15 High School Industry Certification By Program

Program	School	Assessment	Teacher of Record	School Grade	# Students Identified	# Participants	# In Progress	# Passing	# Failing	# Completing Participants	Funding Weights	Potential Funding \$	% Participants	% Passing	% Failing	% In Progress	% Completing Participants
Int'l Business	CBHS	MOS Bundle	Friedlander	X	51	51	26	24	1	25	0.2	\$19,961.23	100%	96%	4%	51%	49%
		Int'l Business			51	51	26	24	1	25		\$19,961.23	100%	96%	4%	51%	49%
Marketing Management	CBHS	Adobe: InDesign	Moore	X	4	0	0	0	0	0	0.1	\$0.00	0%	0%	0%	0%	0%
	MIHS	Adobe: InDesign	Segert	X	4	4	0	2	2	4	0.1	\$831.72	100%	50%	50%	0%	100%
	SCHS	A*S*K* Marketing Fundamentals	Slaughter		17	17	0	1	16	17	0	\$0.00	100%	6%	94%	0%	100%
	SHS	Adobe: InDesign	Brooks		6	6	0	0	6	6	0.1	\$0.00	100%	0%	100%	0%	100%
	SHS	Adobe: Illustrator	Brooks		1	1	0	0	1	1	0.1	\$0.00	100%	0%	100%	0%	100%
		Marketing Management			32	28	0	3	25	28		\$831.72	88%	11%	89%	0%	100%
Marine Tech	EGHS	SkillsUSA Marine	Frahm		19	19	0	12	7	19	0	\$0.00	100%	63%	37%	0%	100%
		Marine Tech			19	19	0	12	7	19		\$0.00	100%	63%	37%	0%	100%
Medical Admin Specialist	HHS	CMAA	Trotman	X	24	24	0	15	9	24	0.1	\$6,237.89	100%	63%	38%	0%	100%
		Medical Admin Specialist			24	24	0	15	9	24		\$6,237.89	100%	63%	38%	0%	100%
Patient Care Assisting	AHS	C N A	McCain	X	36	36	0	35	1	36	0.1	\$14,555.07	100%	97%	3%	0%	100%
	AHS	CPR/AED/BLS for Healthcare Providers	McCain		62	62	0	62	0	62	0	\$0.00	100%	100%	0%	0%	100%
	BHS	C N A	Stannard	X	15	15	0	14	1	15	0.1	\$5,822.03	100%	93%	7%	0%	100%
	MHS	C N A	Krug	X	15	15	0	15	0	15	0.1	\$6,237.89	100%	100%	0%	0%	100%
	PBMS	C N A	Bassile	X	15	15	0	15	0	15	0.1	\$6,237.89	100%	100%	0%	0%	100%
	RHS	C N A	Calhoun	X	14	14	0	14	0	14	0.1	\$5,822.03	100%	100%	0%	0%	100%
	THS	C N A	Hall	X	37	37	0	36	1	37	0.1	\$14,970.92	100%	97%	3%	0%	100%
	THS	CPR/AED/BLS for Healthcare Providers	Hall		37	37	0	37	0	37	0	\$0.00	100%	100%	0%	0%	100%
		CPR/AED/BLS for Healthcare Providers	Shimer		55	55	0	55	0	55	0	\$0.00	100%	100%	0%	0%	100%
		Patient Care Assisting			286	286	0	283	3	286		\$53,645.81	100%	99%	1%	0%	100%
PC Support	CHS	MTA Windows Network Security	Deese	X	1	1	0	1	0	1	0.1	\$415.86	100%	100%	0%	0%	100%
	CHS	MTA Windows Server	Deese	X	1	1	0	0	1	1	0.1	\$0.00	100%	0%	100%	0%	100%
	CHS	MTA Windows OS Fundamentals	Deese	X	2	2	0	1	1	2	0.1	\$415.86	100%	50%	50%	0%	100%
	HHS	MTA Windows OS Fundamentals	Trotman	X	15	15	0	6	9	15	0.1	\$2,495.15	100%	40%	60%	0%	100%
	HHS	MTA Windows Server Admin Fundamentals	Trotman	X	2	2	0	2	0	2	0.1	\$831.72	100%	100%	0%	0%	100%
		PC Support			21	21	0	10	11	21		\$4,158.59	100%	48%	52%	0%	100%
PLTW - ENGINEERING	MIHS	Autodesk: Inventor	Parker	X	38	38	0	29	9	38	0.2	\$24,119.82	100%	76%	24%	0%	100%
		PLTW - ENGINEERING			38	38	0	29	9	38		\$24,119.82	100%	76%	24%	0%	100%
Teacher Assisting	SCHS	ParaPro	Roy		13	13	0	13	0	13	0	\$0.00	100%	100%	0%	0%	100%
		Teacher Assisting			13	13	0	13	0	13		\$0.00	100%	100%	0%	0%	100%
TV Production	BHS	AVID	Potter	X	80	80	45	35	0	35	0.1	\$14,555.07	100%	100%	0%	56%	44%
	EHS	AVID	Kyzer	X	22	22	11	10	1	11	0.1	\$4,158.59	100%	91%	9%	50%	50%
	SCHS	AVID	Striegel	X	41	41	29	5	7	12	0.1	\$2,079.30	100%	42%	58%	71%	29%
	THS	AVID	Curtis	X	72	72	67	5	0	5	0.1	\$2,079.30	100%	100%	0%	93%	7%
	VHS	AVID	Sivco	X	50	50	0	20	30	50	0.1	\$8,317.18	100%	40%	60%	0%	100%
		TV Production			265	265	152	75	38	113		\$31,189.43	100%	66%	34%	57%	43%

2014-15 High School Industry Certification By Program

Program	School	Assessment	Teacher of Record	School Grade	# Students Identified	# Participants	# In Progress	# Passing	# Failing	# Completing Participants	Funding Weights	Potential Funding \$	% Participants	% Passing	% Failing	% In Progress	% Completing Participants
Web Development	AHS	Adobe: Photoshop	Reda	X	3	3	0	0	3	3	0.1	\$0.00	100%	0%	100%	0%	100%
	AHS	Adobe: Dreamweaver	Reda	X	6	6	0	3	3	6	0.2	\$2,495.15	100%	50%	50%	0%	100%
	AHS	Adobe: Illustrator	Reda	X	1	1	0	0	1	1	0.1	\$0.00	100%	0%	100%	0%	100%
	AHS	Adobe: InDesign	Reda	X	1	1	0	0	1	1	0.1	\$0.00	100%	0%	100%	0%	100%
	CHS	Adobe: Dreamweaver	Ocker	X	18	18	0	7	11	18	0.2	\$5,822.03	100%	39%	61%	0%	100%
	CHS	Adobe: Flash	Ocker	X	20	20	0	5	15	20	0.2	\$4,158.59	100%	25%	75%	0%	100%
	CHS	Adobe: Photoshop	Ocker	X	4	4	0	2	2	4	0.1	\$831.72	100%	50%	50%	0%	100%
	EGHS	Adobe: Dreamweaver	Keener	X	3	3	0	1	2	3	0.2	\$831.72	100%	33%	67%	0%	100%
	EGHS	Adobe: Flash	Keener	X	1	1	0	0	1	1	0.2	\$0.00	100%	0%	100%	0%	100%
	EGHS	Adobe: Photoshop	Keener	X	14	14	0	7	7	14	0.1	\$2,911.01	100%	50%	50%	0%	100%
	MHS	Adobe: Dreamweaver	Angove	X	15	15	0	12	3	15	0.2	\$9,980.62	100%	80%	20%	0%	100%
	MHS	Adobe: Flash	Angove	X	8	8	0	7	1	8	0.2	\$5,822.03	100%	88%	13%	0%	100%
	MHS	Adobe: Photoshop	Angove	X	1	1	0	0	1	1	0.1	\$0.00	100%	0%	100%	0%	100%
	MHS	Adobe: Dreamweaver	Erickson	X	29	29	0	29	0	29	0.2	\$24,119.82	100%	100%	0%	0%	100%
	MHS	Adobe: Flash	Erickson	X	18	18	0	18	0	18	0.2	\$14,970.92	100%	100%	0%	0%	100%
	MHS	Adobe: Photoshop	Erickson	X	2	2	0	2	0	2	0.1	\$831.72	100%	100%	0%	0%	100%
	PBMS	Adobe: Dreamweaver	Loyd	X	14	14	0	0	14	14	0.2	\$0.00	100%	0%	100%	0%	100%
	THS	Adobe: Dreamweaver	Ely	X	14	14	0	13	1	14	0.2	\$10,812.33	100%	93%	7%	0%	100%
THS	Adobe: Flash	Ely	X	6	6	0	4	2	6	0.2	\$3,326.87	100%	67%	33%	0%	100%	
THS	Adobe: Illustrator	Ely	X	9	9	0	9	0	9	0.1	\$3,742.73	100%	100%	0%	0%	100%	
THS	Adobe: InDesign	Ely	X	37	37	0	32	5	37	0.1	\$13,307.49	100%	86%	14%	0%	100%	
Web Development					224	224	0	151	73	224		\$103,964.75	100%	67%	33%	0%	100%

This page intentionally left blank.

This page intentionally left blank.

2014-15 High School Industry Certification Results Appendix

Assessment	Bonus FTE Weight	# Students Identified	# Participants	# In Progress	# Passing	# Failing	% Passing	% Failing	Cost of Assessments and Pretest	Cost Per Pass	Earned Bonus FTE Calculation	Potential Funding	ROI by Assessment	ROI
A*S*K* Marketing Fundamentals	0.0	17	17	0	1	16	6%	94%	\$480.00	\$480.00	0	\$0.00	(\$480.00)	(\$480.00)
Adobe: Dreamweaver	0.2	104	104	0	67	37	64%	36%	\$71,430.60	\$72.96	13.4	\$55,725.11	(\$15,705.49)	\$469,920.67
Adobe: Flash	0.2	135	135	0	87	48	64%	36%		\$0.00	17.4	\$72,359.47	\$72,359.47	
Adobe: Illustrator	0.1	361	361	0	279	82	77%	23%		\$0.00	27.9	\$116,024.66	\$116,024.66	
Adobe: InDesign	0.1	407	393	0	303	90	77%	23%		\$0.00	30.3	\$126,005.28	\$126,005.28	
Adobe: Photoshop	0.1	397	396	0	235	161	59%	41%		\$0.00	23.5	\$97,726.87	\$97,726.87	
Adobe: Premier Pro	0.1	5	5	0	5	0	100%	0%		\$0.00	0.5	\$2,079.30	\$2,079.30	
ASE MLR G-1	0.2	7	7	0	2	5	29%	71%		\$2,808.60	\$1,404.30	0.4	\$1,663.44	
ASE Student Assessments - Collision	0.0	26	26	0	5	21	19%	81%	\$690.00	\$138.00	0	\$0.00	(\$690.00)	-\$690.00
Autodesk - Certified User AutoCAD	0.2	147	147	0	108	39	73%	27%	\$20,000.00	\$108.70	21.6	\$89,825.54	\$69,825.54	\$153,036.11
Autodesk - Certified User Inventor	0.2	62	62	0	52	10	84%	16%		\$0.00	10.4	\$43,249.34	\$43,249.34	
Autodesk - Certified User Revit	0.2	24	24	0	24	0	100%	0%		\$0.00	4.8	\$19,961.23	\$19,961.23	
AVID	0.1	265	265	152	75	38	28%	14%	\$4,262.50	\$56.83	7.5	\$31,189.43	\$26,926.93	\$26,926.93
C N A	0.1	132	132	0	129	3	98%	2%	\$15,467.26	\$119.90	12.9	\$53,645.81	\$38,178.55	\$38,178.55
Chief Architect Apprentice	0.2	19	19	0	16	3	84%	16%	\$7,334.00	\$458.38	3.2	\$13,307.49	\$5,973.49	\$5,973.49
CMAA	0.1	167	167	0	138	29	83%	17%	\$17,230.04	\$124.86	13.8	\$57,388.54	\$40,158.50	\$40,158.50
CPR/AED/BLS for Healthcare Providers	0.0	305	305	0	305	0	100%	0%	\$2,000.00	\$0.00	0	\$0.00	\$0.00	\$0.00
EMR	0.1	16	16	0	13	3	81%	19%		\$153.85	1.3	\$5,406.17	\$3,406.17	\$3,406.17
EPA	0.0	39	39	0	39	0	100%	0%		\$500.00	\$12.82	0	\$0.00	(\$500.00)
FLADA	0.1	222	222	0	145	77	65%	35%	\$23,504.80	\$162.10	14.5	\$60,299.56	\$36,794.76	\$36,794.76
GIS Technician	0.1	2	2	0	2	0	100%	0%	\$0.00	\$0.00	0.2	\$831.72	\$831.72	\$831.72
Intro to Childcare Training	0.0	107	107	74	33	0	100%	0%	\$1,318.38	\$39.95	0	\$0.00	(\$1,318.38)	(\$1,318.38)
Intuit: QuickBooks	0.2	5	5	0	3	2	60%	40%	\$600.00	\$200.00	0.6	\$2,495.15	\$1,895.15	\$1,895.15
MOS Bundle	0.2	836	836	559	260	17	100%	2%	\$59,928.56	\$230.49	52	\$216,246.68	\$156,318.12	\$156,318.12
MTA Windows Network Security	0.1	1	1	0	1	0	100%	0%	\$3,262.50	\$326.25	0.1	\$415.86	(\$2,846.64)	\$4,158.59
MTA Windows OS Fundamentals	0.1	17	17	0	7	10	41%	59%		\$0.00	0.7	\$2,911.01	\$2,911.01	
MTA Windows Server	0.1	1	1	0	0	1	0%	100%		\$0.00	0	\$0.00	\$0.00	
MTA Windows Server Admin Fundamentals	0.1	2	2	0	2	0	100%	0%		\$0.00	0.2	\$831.72	\$831.72	
NATE	0.2	7	7	5	2	0	29%	0%	\$58.85	\$29.43	0.4	\$1,663.44	\$1,604.59	\$1,604.59
NCCER HVAC	0.2	21	21	10	11	0	100%	0%	\$555.00	\$50.45	2.2	\$9,148.90	\$8,593.90	\$8,593.90
NCCER Carpentry	0.2	247	247	246	1	0	0%	0%	\$12,949.09	\$12,949.09	0.2	\$831.72	(\$12,117.37)	(\$12,117.37)
NOCTI - Apparel & Text Prod & Mer	0.0	64	64	0	64	0	100%	0%	\$3,032.53	\$47.38	0	\$0.00	(\$3,032.53)	(\$3,032.53)
NOCTI - Criminal Justice	0.0	36	36	0	36	0	100%	0%	\$950.00	\$0.00	0	\$0.00	(\$950.00)	(\$950.00)
OSHA-10	0.0	34	34	0	34	0	100%	0%	\$175.00	\$5.15	0	\$0.00	(\$175.00)	(\$175.00)
ParaPro	0.0	13	13	0	13	0	100%	0%	\$650.00	\$50.00	0	\$0.00	(\$650.00)	(\$650.00)
ProStart Certificate of Achievement	0.2	23	23	0	23	0	100%	0%	\$0.00	\$0.00	4.6	\$19,129.51	\$19,129.51	\$19,129.51
SafeStaff Food Handler Certification	0.0	507	507	0	507	0	100%	0%	\$4,794.16	\$9.46	0	\$0.00	(\$4,794.16)	(\$4,794.16)
ServSafe Manager	0.2	477	476	0	244	232	51%	49%	\$20,640.77	\$84.59	48.8	\$202,939.19	\$182,298.42	\$182,298.42
SkillsUSA Marine	0	19	19	0	12	7	63%	37%	\$310.00	\$25.83	0	\$0.00	(\$310.00)	(\$310.00)
Solidworks	0.1	143	143	0	92	51	64%	36%	\$11,413.36	\$124.06	9.2	\$38,259.03	\$26,845.67	\$26,845.67
Solidworks - Professional	0.0	1	1	0	1	0	100%	0%		\$0.00	0	\$0.00	\$0.00	
Staff Credential	0.0	107	107	74	33	0	100%	0%		\$840.00	\$25.45	0	\$0.00	(\$840.00)
Water Treatment Plant Operator C	0.1	27	23	0	3	20	13%	87%	\$2,400.00	\$800.00	0.3	\$1,247.58	(\$1,152.42)	(\$1,152.42)
Total		5,554	5,534	1,120	3,412	1002	77%	23%	\$305,081.44		322.90	\$1,342,808.71	\$1,037,727.27	\$1,037,727.27