

**HEAD START GOVERNING BOARD AND POLICY COUNCIL MONTHLY REPORT:
Oct 2022**

| ENROLLMENT | | | | |
|-------------------|---|--------------------------|-------------------|------------|
| Month | Head Start Enrollment | Funded Enrollment | Attendance | IEP |
| July 2022 | <i>The program is not operational during the month of July.</i> | | | |
| August 2022 | 624 | 624 | 91.97% | 6.87% |
| September 2022 | 603 | 624 | 89.11% | 7.20% |
| October 2022 | 600 | 624 | 90.75% | 7.65% |
| November 2022 | | 624 | | |
| December 2022 | | 624 | | |
| January 2023 | | 624 | | |
| February 2023 | | 624 | | |
| March 2023 | | 624 | | |
| April 2023 | | 624 | | |
| May 2023 | | 624 | | |

| TOTAL MEALS SERVED | | | |
|---------------------------|---|----------------|---------------|
| Month | Breakfasts | Lunches | Snacks |
| July 2022 | <i>The program is not operational during the month of July.</i> | | |
| August 2022 | 4995 | 4460 | 6137 |
| September 2022 | 8758 | 8759 | 10556 |
| October 2022 | 9629 | 9912 | 11962 |
| November 2022 | | | |
| December 2022 | | | |
| January 2023 | | | |
| February 2023 | | | |
| March 2023 | | | |
| April 2023 | | | |
| May 2023 | | | |

| FY 2023 (INCLUDES P-CARD EXPENSES) - Head Start Grant Year 1 - Project 423xxx - Base Grant | | | | |
|---|-----------------------|---------------------|-----------------------|-------------------------------|
| Cost Category | Federal Budget | Actuals | | Balance of Grant Award |
| | | Oct-22 | YTD | |
| Payroll | \$3,321,664.46 | \$272,841.37 | \$794,057.12 | \$2,527,607.34 |
| Fringe | \$1,416,302.54 | \$105,159.04 | \$297,444.23 | \$1,118,858.31 |
| Supplies | \$151,274.00 | \$7,437.71 | \$13,926.20 | \$137,347.80 |
| Contractual | \$281,492.00 | \$22,811.37 | \$22,811.37 | \$258,680.63 |
| Other | \$129,046.00 | \$7,173.16 | \$19,163.73 | \$109,882.27 |
| Indirect Cost | \$201,922.00 | \$0.00 | \$13,024.83 | \$188,897.17 |
| TTA (includes Travel) | \$59,010.00 | \$6,810.98 | \$7,735.98 | \$51,274.02 |
| Total Base Grant | \$5,560,711.00 | \$422,233.63 | \$1,168,163.46 | \$4,392,547.54 |

| <i>Head Start Grant - Project 421024 ARP (04/01/21-03/31/23) (Includes P-Card Expenses)</i> | | | | |
|---|---------------------|-----------------|--------------------|------------------------|
| Cost Category | Federal Budget | Actuals | | Balance of Grant Award |
| | | Oct-22 | YTD | |
| Payroll | \$21,499.98 | \$30.60 | \$6,433.68 | \$15,066.30 |
| Fringe | \$3,635.32 | \$6.16 | \$531.72 | \$3,103.60 |
| Supplies | \$20,727.02 | \$594.00 | \$2,341.39 | \$18,385.63 |
| Equipment | \$0.00 | \$0.00 | \$0.00 | \$0.00 |
| Contractual | \$270,237.00 | \$90.00 | \$12,647.11 | \$257,589.89 |
| Other | \$289,052.60 | \$0.00 | \$1,760.00 | \$287,292.60 |
| Indirect Cost | \$34,395.41 | \$0.00 | \$523.75 | \$33,871.66 |
| Total - CRSSA | \$639,547.33 | \$720.76 | \$24,237.65 | \$615,309.68 |

| | |
|-------------------------------|---------------------|
| NOA Starting Budget | 746,616.00 |
| Expended as of 6/30/22 -FY22 | <u>(107,068.67)</u> |
| Balance as of 10/1/22 | 639,547.33 |
| Expended as of 10/31/22 -FY23 | <u>(24,237.65)</u> |
| Balance as of 10/31/22 | \$615,309.68 |

| <i>Head Start Grant - Project 421029 CRRSA (04/01/21-03/31/23) (Includes P-Card Expenses)</i> | | | | |
|---|---------------------|-------------------|--------------------|------------------------|
| Cost Category | Federal Budget | Actuals | | Balance of Grant Award |
| | | Oct-22 | YTD | |
| Payroll | \$27,089.65 | \$1,068.58 | \$12,000.21 | \$15,089.44 |
| Fringe | \$6,751.50 | \$84.03 | \$2,274.33 | \$4,477.17 |
| Supplies | \$12,375.38 | \$6,426.04 | \$10,391.80 | \$1,983.58 |
| Equipment | \$75,203.29 | \$1,197.96 | \$5,912.37 | \$69,290.92 |
| Contractual | \$0.00 | \$0.00 | \$0.00 | \$0.00 |
| Other | \$14,740.84 | \$0.00 | \$6,771.00 | \$7,969.84 |
| Indirect Cost | \$5,883.45 | \$0.00 | \$883.00 | \$5,000.45 |
| Total - CRSSA | \$142,044.11 | \$8,776.61 | \$38,232.71 | \$103,811.40 |

| | |
|-------------------------------|----------------------|
| NOA Starting Budget | 187,805.00 |
| Expended as of 6/30/22 -FY22 | <u>(45,760.89)</u> |
| Balance as of 10/1/22 | \$ 142,044.11 |
| Expended as of 10/31/22 -FY23 | <u>(38,232.71)</u> |
| Balance as of 10/31/22 | \$ 103,811.40 |

CONTENT AREA REPORT: OCTOBER 2022

EDUCATION AND CHILD DEVELOPMENT

Additional curriculum support to teaching teams includes the development of a **Curriculum Pacing Guide**. This tool supports a strategic plan to implement the curriculum with fidelity. (1302.32 Curricula)

Training and Professional Development Data:

September

- Active Supervision – 99 Teachers, IAs and Family Advocates participated
- CLASS Overview – 41 Teachers and IAs participated. With the CLASS training provided last year, 96% of our teaching staff participated in this one-day overview

October

- IMIL – I Am Moving, I Am Learning – 84 Teachers and IAs participated in this training.

In collaboration with teaching teams and their coach, an Action Plan is written for each classroom. Action Plan has two goals each. These goals are aligned with the following:

| |
|---|
| Conscious Discipline: 26 Goals |
| CLASS: Teacher Sensitivity (3) Regard for Student Perspective (3) Behavior Management (10) Productivity (10) ILF (6) Concept Development and Quality of Feedback (6) Language Modeling (6) |
| State Standards (FELDS): A (6) B (10) C (1) D (1) E (10) F (14) G (7) V (7) |
| School Readiness Goals Alignment: 1 (20) 2 (6) 3 (28) 4 (7) 5 (3) |

(1302.92 Training and Professional Development)

The ESE Specialist attended 10 meetings and supported teachers, family advocates and instructional coaches with disabilities and mental health information at 11 schools (18 site visits). (1302.45 Child Mental Health and Social and Emotional Well-Being; 1302.60 Additional Services for Children with Disabilities)

Check out the October weekly newsletters attached to this report for additional program highlights.

FAMILY AND COMMUNITY

The program continues accepting pre-applications for the 2022-2023 school year. [Pre-applications](#) are available to all interested families via the [Head Start website](#), email or by U.S mail. A flyer with a QR code that provides easy access to the Head Start application is available at multiple school and community locations. (1302.13 Recruitment)

Family advocates attended their regular monthly meeting, which includes ongoing professional development provided by Brevard C.A.R.E.S staff. *(1302.92 Training and Professional Development)*

Region IV Training and Technical Assistance Specialist provided a two-day on-site training in ERSEA and Relationship Based Competencies. The goal of this training was to deepen understanding of how ERSEA and Relationship Based Competencies benefit the program. As a result of this training, the program is developing an updated recruitment plan. *(1302.13 Recruitment)*

HEALTH

Head Start health technicians recently completed initial vision and hearing screenings for children who started on the first day of school and are performing height, weight, and blood pressure screenings. Parent consent forms are reviewed prior to screening children. *(1302.42(b) Child Health Status and Care)*

Physical exams, nutritional forms, and health cards continue to be reviewed for pertinent health information and parent concerns to have a clear picture of each child's current health status. Those students with health concerns may require an Individual Health Plan be written for any care they will receive at school. This requires parent and staff collaboration, planning and sometimes referral for additional screening and evaluation. *(1302.41 Collaboration and communication with parents.)*

Three students are receiving mental health services from Kinder Konsulting and four students have been referred for initial meetings with the mental health consultant. *(1302.45(b) Child Mental Health and Social and Emotional Well-Being)*

Check out the October weekly newsletters attached to this report for additional program highlights.

INFORMATION AND GUIDANCE FROM THE OFFICE OF HEAD START (OHS)

On October 21, 2022 an [Information Memorandum \(IM\)](#) was issued regarding Fiscal Year (FY) 2023 Monitoring Process for Head Start and Early Head Start Recipients. Our program does not anticipate a monitoring event in FY2023.

VOLUME 10 OCTOBER 3, 2022



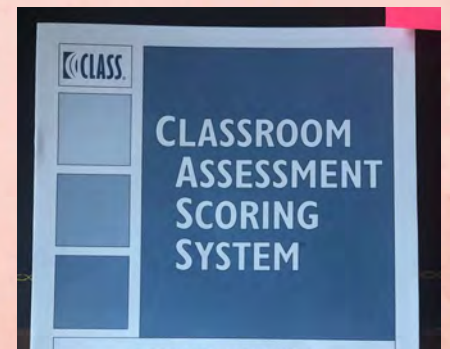
THE SCOOP

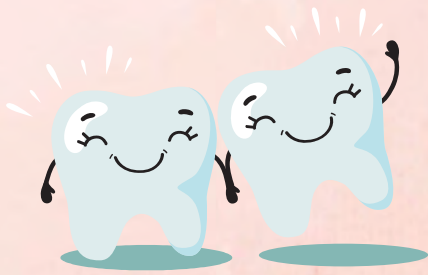
HEAD START NEWS



Children learning concepts of print, enhancing language skills and vocabulary. SO many skills are reinforced with books.

CLASS training has been rescheduled for **October 11 and 12**. If you were signed up for the classes that were cancelled, please email me or contact your coach to sign up for the day you can attend. Thank you!
cindy.kaier56@gmail.com





DENTAL EXAMS

| | Set Up | Exam Dates |
|--------------|--------|-------------|
| Port Malabar | 9/29 | 9/29-10/4 |
| Sherwood | 10/5 | 10/5-10/12 |
| Palm Bay | 10/13 | 10/13-10/18 |
| Saturn | 10/19 | 10/19-10/25 |
| Jupiter | 10/26 | 10/26-11/1 |



Ms. Martin's class at Jupiter

We have healthy teeth in Head Start. Check out the percentage of children who received an onsite dental exam:

Cambridge - 65%

Coquina - 68%

Enterprise - 49%

Endeavour - 69%

Mims - 75%



Thank you to Ms. Murray for helping with the Active Supervision training at Endeavour. We appreciate all the mentor teachers who were involved in helping with this important professional development. This is a required training for all Head Start staff!

Ordering pizza
in Ms. Rotan's
classroom.





As we approach World Mental Health Day on October 10, 2022, NHSA and our partners at Starling Minds want to do our part in lowering the stigma around mental illness by debunking some of the most common mental illness myths.

According to the CDC, more than 50% of Americans will be diagnosed with a mental illness or disorder at some point in their lifetime, making it among the most common health conditions in the United States.

- 1 in 5 U.S. adults experience mental illness each year.
- 1 in 20 U.S. adults experience serious mental illness each year.
- 1 in 6 U.S. youth aged 6-17 experience a mental health disorder each year.
- 50% of all lifetime mental illness begins by age 14, and 75% by age 24.

Despite the valiant efforts of the mental health community, stigma remains one of the greatest barriers preventing people from seeking help. In fact, stigma is often the reason many suffer in silence.

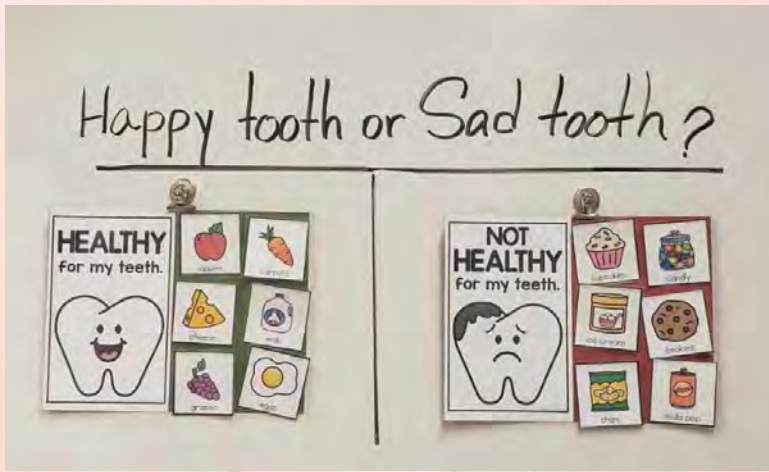
Addressing untruths relating to our mental wellbeing has never been more pressing and important. The more information we are armed with, the less likely we are to allow myths to color our opinions and prevent us from doing what we can for our mental health.



Teaching caring, kindness and empathy with Baby Doll Circle time in Ms. Cruz's 3-year-old classroom at Discovery.

This is an important curriculum in all Head Start 3-year-old classrooms.





Ms. Martin's class
at Jupiter. We
have healthy,
happy teeth!

Amount of Children By School with 6 or more Absences

| School | # of children |
|------------------|---------------|
| Cambridge | 0 |
| Coquina | 1 |
| Discovery | 5 |
| Endeavour | 5 |
| Enterprise | 2 |
| Jupiter | 3 |
| Mims | 5 |
| Palm Bay | 4 |
| Port Malabar | 2 |
| Saturn | 5 |
| Sherwood | 1 |
| Uni Park | 4 |
| TOTAL | 37 |



Six children are now in STEP THREE of our Attendance Plan. That means a meeting is set by the Advocate. The teacher and advocate must meet with the parent and a PLAN begun. **(Schools in BOLD need at least one plan developed.)**



Ms. Woodberry class at Endeavour.



Gummy bear science experiment in Ms. Metott's class at Mims.



VOLUME 11 OCTOBER 11, 2022



THE SCOOP



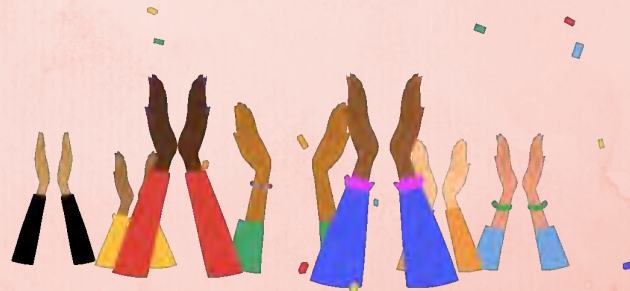
HEAD START NEWS



October is National Head Start Awareness Month!

We have 34 wonderful classrooms in 12 schools and want to celebrate the dedication of staff and parents who support our program. Invitations have been sent welcoming Board members to visit our Head Start classrooms. We are VERY PROUD of our program!

Thank you for your continued support!



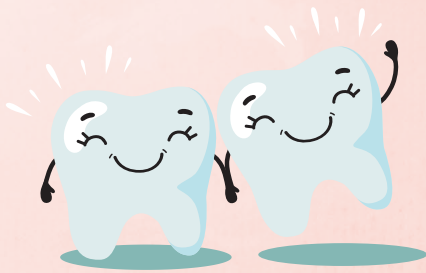
Congratulations to Port Malabar and Coquina for getting 100% of their ASQs completed!



Ms. Fuller at Coquina



Ms. Metott at Mims



NEW DENTAL SCHEDULE

Start Date

| | |
|-----------|-------|
| Sherwood | 10/11 |
| Palm Bay | 10/20 |
| Saturn | 11/1 |
| Jupiter | 11/14 |
| Uni Park | 11/28 |
| Discovery | 12/07 |

We have healthy teeth in Head Start. Check out the percentage of children who received an onsite dental exam:

Cambridge - 65%

Coquina - 68%

Enterprise - 49%

Endeavour - 69%

Mims - 75%



Dental day at Port Malabar

Welcome back Christine Englund.
We are happy to have Christine
return to Saturn as the Family
Advocate!



**WELCOME
BACK**

Saying goodbye to Melissa Hardy, Instructional Coach. You have given Head Start so many years of excellence. Thank you.



MISSING
YOU



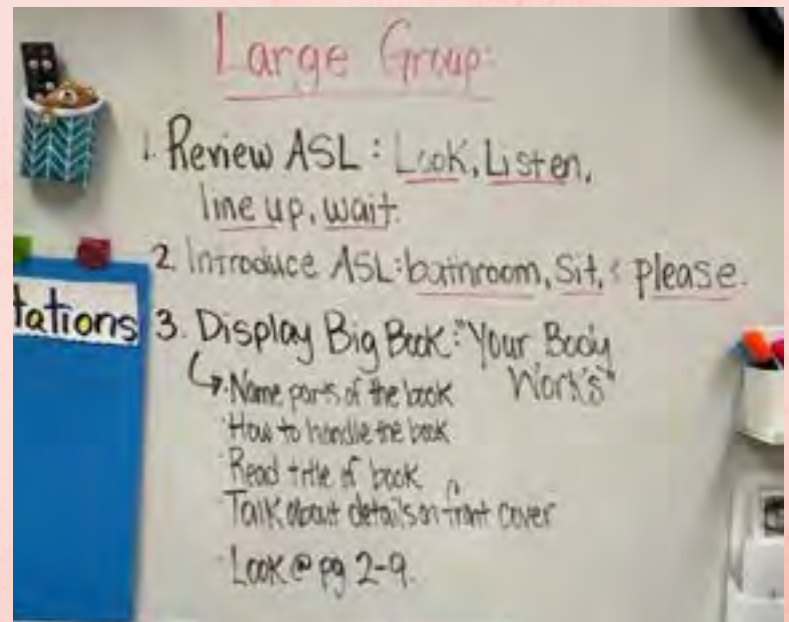
A message from Melissa Hardy, Instructional Coach

I'd like to say thank you to the amazing people who I've worked with in these past 12 years with Pre-K and Head Start. As an IA I spent a year in a Blended Pre-K at Sunrise, then taught for 6 years at Port Malabar both 3's and VPK, and started coaching 5 years ago. There's been so many changes! We've come so far! I've been fortunate to learn from the best and form some great connections that will continue regardless of work location. I'd like to give a shout out to Terri Barlow and thank her for trusting me with so many different projects that I've loved having the opportunity to grow through. To Cindy Kaier and our Leadership team, you guys really are the dream team and working with you has been a career highlight. The professionalism and work environment make leaving this position so difficult.

I've seen classrooms with any variety of challenges become engaging places to learn and I can't thank our teaching teams enough for the willingness I've witnessed to try something new, think outside the box, and humor me with some patience. Lots of deep breaths, laughter, and even tears I will take with me as I venture beyond BPS. It's hard to let go. I feel so at home in this role and in this place. I hope we will continue to stay in touch, knowing that I appreciate the hard work you do and the commitments to keep this whole program excellent. The changes we've made even this past summer were all for the bettering of our classrooms and I hope you see these differences every day. I will not miss all those DCF courses, but I am sure the hardest parts are behind us. I can't wait to share how innovative the BPS Head Start program has been with some of our best ideas come to life. I look forward to hearing from you. It's not good bye, it's see ya later.



Mr. Potato Head used to reinforce classroom expectations at Discovery



Lesson Planning for all to see at Discovery.

Amount of Children By School with 6 or more Absences

| School | # of children |
|------------------|---------------|
| Cambridge | 0 |
| Coquina | 1 |
| Discovery | 5 |
| Endeavour | 5 |
| Enterprise | 2 |
| Jupiter | 3 |
| Mims | 5 |
| Palm Bay | 4 |
| Port Malabar | 2 |
| Saturn | 5 |
| Sherwood | 1 |
| Uni Park | 4 |
| TOTAL | 37 |



Six children are now in STEP THREE of our Attendance Plan. That means a meeting is set by the Advocate. The teacher and advocate must meet with the parent and a PLAN begun. **(Schools in BOLD need at least one plan developed.)**



Brevard Zoo's Exceptional Boo at the Zoo

Friday, Oct. 14 & Saturday, Oct. 15
from 5 - 7 p.m.



Families of children with exceptionalities are invited to enjoy a magical evening of trick-or-treating, games, sensory exploration and more as you stroll through Brevard Zoo's Paws On area.

As a come and go event, timed-entry tickets are available for \$5 a piece. Guests can choose to enter the Zoo at 5, 5:30 or 6 p.m.

Bring your cell phone or tablet to participate in our QR code scavenger hunt!

Please register online at brevardzoo.org/education/kids-programs/.



Costumes are encouraged !



For inquiries, contact Kristen Gunderson at kgunderson@brevardzoo.org.

VOLUME 12 OCTOBER 17, 2022



THE SCOOP



HEAD START NEWS



The Head Start Assessment due date is on October 28.

We want to answer some questions that you might be asking:

- Your original Head Start Assessment will be kept in the student's Salmon Folder and will be used for the Fall, Winter and Spring Assessment.
- You may want to use a different pen color when completing each assessment period when it comes to identifying letters, numbers, shapes or colors to help with each assessment period.
- When you complete your Parent-Teacher Conferences, you will share this assessment by making a copy for the parent to keep (just like you printed GOLD report cards last year but less paper). Teachers will always keep the original.
- You may also want to show the parent documentation you used to complete your assessment that may be in your student's portfolio (examples of drawing, name writing, Renaissance Report first period, Khan's Academy levels off iPad, etc.).
- The Parent-Teacher conference date completion date is November 10. Once you have finalized your student Head Start Assessment by October 28, you can begin scheduling Parent-Teacher conferences. You can use your schools Parent-Teacher conference nights to support your conference's as well as other times within your daily schedule. There is a Head Start Conference Form that you will use (same form as the Home Visit) to record your Parent-Teacher conference (look in Blue Binder) which will also be placed into the Salmon folder when they are complete. Salmon folders will be distributed soon."



FALL Fun



Spooky Halloween fun in Ms. Cruz classroom at Discovery.

SEPTEMBER ATTENDANCE PERCENTAGES BY SCHOOL

| School | Percentage |
|------------------|------------|
| Cambridge | 90% |
| Coquina | 93% |
| Discovery | 82% |
| Endeavour | 88% |
| Enterprise | 89% |
| Jupiter | 91% |
| Mims | 88% |
| Palm Bay | 79% |
| Port Malabar | 85% |
| Saturn | 90% |
| Sherwood | 93% |
| Uni Park | 90% |
| | |



**Congratulations to:
Cambridge,
Coquina, Jupiter,
Saturn, Sherwood
and Uni Park for
hitting the 90%
mark for
attendance in
September.**



IMIL

I Am Moving, I Am Learning

IMIL is not a curriculum; it is a set of strategies to add activities to the daily routine that increase quality physical movement. Specific types of activities can help build neural networks in young children's brains that support learning.



**Ms. Metott's
classroom
at Mims**



At Saturn IMIL professional development included 4 Head Start classroom staff, the Blended classroom staff and the PKVE staff. They worked together to clear out and set up a gross motor room. They did a fantastic job. They have so many great ideas on how to use this room. They will rotate one class at a time using their playground schedule. Thank you to Ms. Hurst, principal for helping with the classroom, Tarra Bertram and the team at Saturn for working together to create a wonderful space for children.



Ms. Harper testing out the tunnel!



IMIL



IMIL



Uni Park team working together to set up IMIL materials.

Some kids need more postural stability to stay seated. Here are 8 other choices that can provide stability while sitting on the carpet. Let's REGARD STUDENTS' PERSPECTIVE and provide MORE options on how they sit.

Criss Cross

BREAKING NEWS

THERE ARE OTHER WAYS CHILDREN CAN SIT DURING CIRCLE TIME.



| | | |
|---|--|---|
| <p>Long Sitting</p>  | <p>One Knee</p>  | <p>Mermaid Sitting</p>  |
| <p>Bent Long Sit</p>  | <p>Criss Cross</p>  | <p>On Belly</p>  |
| <p>Kneel Sit</p>  | <p>Kneel Sit Open</p>  | <p>Side Kneel Sit</p>  |



We expect your children and families are getting excited about the upcoming Brevard Zoo field trips! It has been sometime since most of us have planned or taken children on field trips. Here are a few reminders, and possibly some new information around volunteers and chaperones. An email was sent by Terri Barlow for additional details.

- **Parents/guardians MUST complete the volunteer application and be a BPS Approved Volunteer to attend field trips. (See your school volunteer coordinator or administrator to confirm each parent's volunteer status).**
- **Selection and number of chaperones accompanying field trips shall be the discretion of the teacher with the approval of the principal.**
- **Teachers are asked to make every effort to encourage all Approved Volunteers to attend field trips.**
- **Each child must have a signed District field trip permission form, in place prior to the trip.**
- **ALL Head Start students MUST ride the school bus both to and from the field trip destination.**
- **Parents who are not Approved Volunteers/chaperones may NOT go on the field trip.**
- **Siblings (school age or younger) may NOT attend the field trip.**
- **PARENTS WILL NOT BE PERMITTED TO SIGN OUT THEIR STUDENT AT THE END OF A FIELD TRIP. ALL STUDENTS MUST RETURN TO YOUR CAMPUS AND THEN DISMISS FROM SCHOOL. *Board Policy 8640 – Procedures and Criteria for Field Trips: Transportation (p.6, Number 4) “Travel will begin and end at the school. Students will not be picked up or let off at other locations.**
- **Head Start will cover the group admission fee (\$14.00/person) for additional Head Start parent chaperones.**

Whoo Hoo
Wagon Winners
Ms. Dunwoody's
team at Port
Malabar and Ms.
Cruz's team at
Discovery



Learning Outside Activity

Geometry jump gets your kids jumping around to learn the different geometry shapes! All you need to do is draw geometric shapes in different colors on a sidewalk, such as a circle, triangle, square, etc. For children with more advanced math skills, throw in some octagons, hexagons, trapezoids, etc.

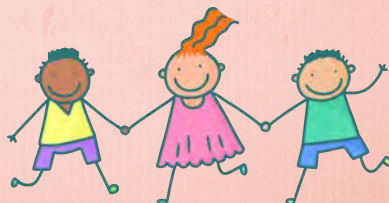
Now ask the child to stand right next to the shapes and tell them you're going to play a game that will involve jumping from one shape to another. As you shout out a shape (ex: circle), the child tries to quickly jump on the circle shape.

When you notice that the child is starting to master the shapes, you can increase the pace at which you shout out the shapes. Just make sure that the shapes that you're shouting out are within reach of the child so that they don't get hurt.

If you want to make the game more challenging and practice quick reasoning skills, you can try having identical shapes, but with different colors. For instance, your 'game board' could have 1 red circle, 1 blue rectangle, 1 green rectangle, 1 yellow trapezoid, 1 blue trapezoid, etc.

Then, instead of shouting out just the shape, you shout out both the shape and the color and the child has to quickly think where to jump to. Again, increase the pace as the child becomes more comfortable.

Submitted by Michelle Dale, Instructional Coach



VOLUME 13 OCTOBER 24, 2022



THE SCOOP



HEAD START NEWS



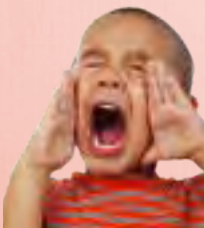
Ms. Slunt's class at the Zoo



ASQ Update

The following have 100 percent completion for those students starting on or near the first day of school.

**Cambridge Coquina Discovery Endeavour
Enterprise Jupiter Palm Bay Pt. Malabar
Sherwood and Uni Park**



**SHOUT OUT TO MARIA MURRAY AT ENDEAVOUR FOR
HELPING COMPLETE ASQs FOR ANOTHER CLASSROOM
AS WELL AS HER OWN. THANK YOU MARIA!!**



Space Coast Dental Task Force members and other community leaders visited Palm Bay Elementary to see our dental exams in action! President/CEO of Space Coast Health Foundation, Johnette Gindling, and Maureen Kelly, Assistant Community Health Nursing Director/School Health Coordinator at DOH along with Robin Buckmaster, Sr. Community Health Nursing Supervisor/Head Start Health Manager are pictured with our Dental Hygienist, Amanda Willis. During a school visit, our Policy Council Chairperson, Nikki Farley, commented, “by understanding how the exams work and seeing them firsthand, may allow me to help if a parent comes to me with questions.”



WOW



| School | % of students who received a Dental exam |
|--------------|--|
| Cambridge | 65% |
| Coquina | 68% |
| Enterprise | 49% |
| Endeavour | 69% |
| Mims | 75% |
| Port Malabar | 73% |
| Sherwood | 77% |

Additional Schools will begin

Saturn 11/1

Jupiter 11/14

Uni Park 11/28

Discovery 12/07

Strategies for Oppositional Kids



www.thepathway2success.com



Build a strong relationship



Start fresh every day



Stay calm in times of stress



Develop routines (and teach them)



Identify triggers ahead of time



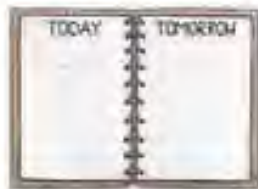
Keep all adults on the same page



Avoid power struggles



Give special responsibilities



Be consistent



Let the little things go



Use their interests in lessons



Teach social skills & coping strategies

Copyright by Kate Haskins, Sarah P. Swartz, & Abby O'Connell

Ideas to think about



SEPTEMBER ATTENDANCE PERCENTAGES BY SCHOOL

| School | Percentage |
|------------------|------------|
| Cambridge | 90% |
| Coquina | 93% |
| Discovery | 82% |
| Endeavour | 88% |
| Enterprise | 89% |
| Jupiter | 91% |
| Mims | 88% |
| Palm Bay | 79% |
| Port Malabar | 85% |
| Saturn | 90% |
| Sherwood | 93% |
| Uni Park | 90% |
| | |



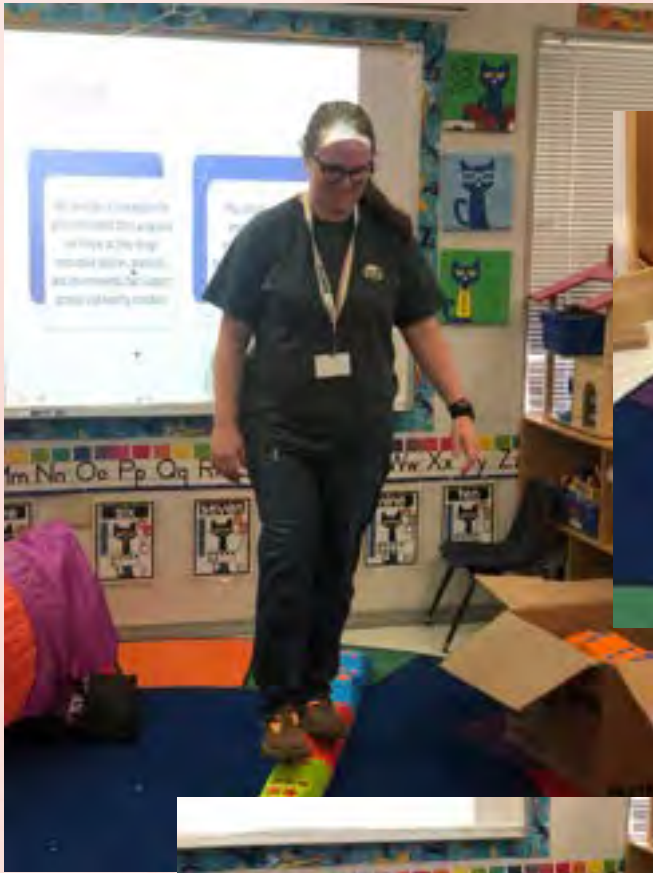
**Congratulations to:
Cambridge,
Coquina, Jupiter,
Saturn, Sherwood
and Uni Park for
hitting the 90%
mark for
attendance in
September.**



IMIL



**Our children
using the IMIL
equipment**



Staff are working hard to put the materials together and trying them out.

IMIL

Some kids need more postural stability to stay seated. Here are 8 other choices that can provide stability while sitting on the carpet. Let's REGARD STUDENTS' PERSPECTIVE and provide MORE options on how they sit.





FALL Fun





We expect your children and families are getting excited about the upcoming Brevard Zoo field trips! It has been sometime since most of us have planned or taken children on field trips. Here are a few reminders, and possibly some new information around volunteers and chaperones. An email was sent by Terri Barlow for additional details.

- **Parents/guardians MUST complete the volunteer application and be a BPS Approved Volunteer to attend field trips. (See your school volunteer coordinator or administrator to confirm each parent's volunteer status).**
- **Selection and number of chaperones accompanying field trips shall be the discretion of the teacher with the approval of the principal.**
- **Teachers are asked to make every effort to encourage all Approved Volunteers to attend field trips.**
- **Each child must have a signed District field trip permission form, in place prior to the trip.**
- **ALL Head Start students MUST ride the school bus both to and from the field trip destination.**
- **Parents who are not Approved Volunteers/chaperones may NOT go on the field trip.**
- **Siblings (school age or younger) may NOT attend the field trip.**
- **PARENTS WILL NOT BE PERMITTED TO SIGN OUT THEIR STUDENT AT THE END OF A FIELD TRIP. ALL STUDENTS MUST RETURN TO YOUR CAMPUS AND THEN DISMISS FROM SCHOOL. *Board Policy 8640 – Procedures and Criteria for Field Trips: Transportation (p.6, Number 4) “Travel will begin and end at the school. Students will not be picked up or let off at other locations.**
- **Head Start will cover the group admission fee (\$14.00/person) for additional Head Start parent chaperones.**



**Ms. Slunt's class
from Mims at the
Zoo**



VOLUME 14 OCTOBER 31, 2022



THE SCOOP

HEAD START NEWS



*Happy
Halloween*



Thank you to all the teaching teams for their work incorporating IMIL equipment and strategies into their day. The professional development showed that we have teaching teams willing to learn and grow and offer our children a variety of strategies to increase their learning.

Checking in on our Pacing Guide

The pacing guide for Ready to Advance (RTA) indicates we are in our LAST week of **Unit 3 - Communities and Health**. We will start Unit 4 - Community Jobs and Fall NEXT Monday, November 7th.

We are in our 12th week of our Second Step curriculum.



Ms. Rotan and Ms. Collado from Saturn visiting the Pumpkin Patch.



DCF ONLINE CLASSES

Thank you to everyone for taking and completing these required online classes. As we track all teachers and IAs for completion of these courses we want to give a SHOUT OUT to the following schools who have ALL or MOST of their teaching team completely done with these classes.

Port Malabar - EVERYONE

Enterprise

Jupiter

Palm Bay



Planning Ahead

CLASS Observations are being scheduled by the coaching leadership team. The dates will be November 8, 9, 10 and 15. Please talk with your coach if you have any questions.

These will be unannounced visits by TWO trained observers. PLEASE make sure your daily schedule is up to date.



Wheels on the Bus go round and round....
Ahern's class at Sherwood



Tearing tissue paper pumpkins in Ms. Burns
and Ms. Smith class at Enterprise.



Practicing our prewriting strokes
when making shapes in Landis AND Cruz's classes
at Discovery.



Discovery teaching teams
LOVE Pete the Cat!



CHAMPION



Crystal Tilly



Phillip
Wachset



Lauren Taylor

Head Start Champions at Jupiter Elementary School

At every school we need champions that support our Head Start program. These people do not necessarily work in one of our classrooms but go out of their way to support our children in a variety of ways. We want to recognize these amazing Jupiter teachers who take their time to come help Head Start at dismissal EVERY day. Without them, the dismissal line would be very slow. THANK YOU TEACHERS AT JUPITER!



Five Little Pumpkins

Five little pumpkins sitting on a gate.
The first one said, "Oh my, it's getting late."
The second one said, "There are bats in the air."
The third one said, "But we don't care."
The fourth one said, "Let's run and run and run."
The fifth one said, "I'm ready for some fun."
"Oo-oo!" went the wind and out went the light.
And the five little pumpkins rolled out of sight.

For some of our children we are in STEP THREE of the attendance monitoring. This means they have reached 11 or more absences and need to have an Attendance Plan and Goal Setting Form filled out by the Advocate and Teacher.



Congratulations

| School | # of Children who need a plan |
|--------------|-------------------------------|
| Cambridge | 1 |
| Coquina | 1 |
| Discovery | 0 |
| Endeavour | 2 |
| Enterprise | 4 |
| Jupiter | 1 |
| Mims | 6 |
| Palm Bay | 4 |
| Port Malabar | 2 |
| Saturn | 3 |
| Sherwood | 1 |
| Uni Park | 4 |

NO COST EYEGASSES AND EXAMS FOR CHILDREN

[HTTP://BPSRESOURCES.BREVARDSCHOOLS.ORG/SITES/LTP/LISTS/LTP/ATTACHMENTS/4116/HEIKENMOBILE.PDF](http://BPSRESOURCES.BREVARDSCHOOLS.ORG/SITES/LTP/LISTS/LTP/ATTACHMENTS/4116/HEIKENMOBILE.PDF)

APPLICATIONS ARE DUE BY DECEMBER 1, 2022



FLORIDA HEIKEN
Children's Vision Program, LLC

REFERRAL
CODE: AC9

NO COST EYE EXAMS & GLASSES FOR CHILDREN

*Accessible on any internet enabled smart phone/tablet/computer
English / Español / Kreyòl / Português*

PARENTS APPLY NOW!
www.floridaheiken.org



Portal: Confidential & Secure

- Florida Students
- Pre-K through 12th Grade
- Reapply Every School Year

COVID-19 PROTOCOLS

- Masks Required
- Symptom Free



All student information is kept confidential and not shared with any other entity.

Partially funded by:

