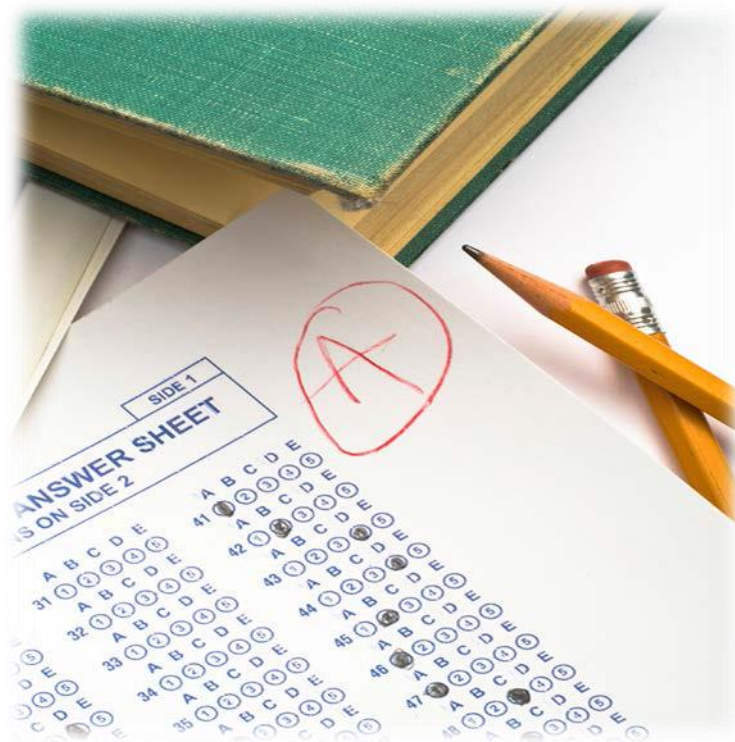


# Industry Certification Results 2015- 2016



**Brevard Public Schools**  
**Dr. Desmond Blackburn, Superintendent**

**SCHOOL BOARD OF BREVARD COUNTY**

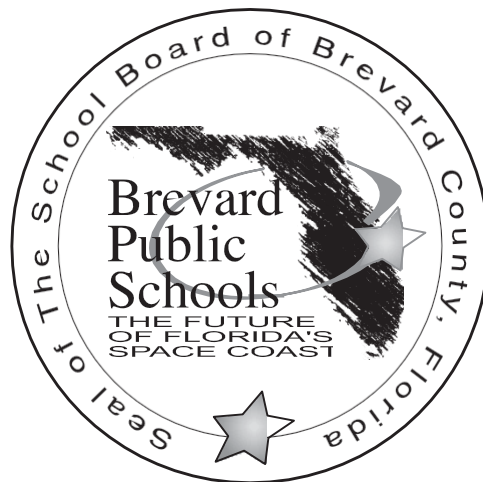
Educational Services Facility  
2700 Judge Fran Jamieson Way  
Viera, FL 32940-6601

**SCHOOL BOARD MEMBERS**

Andy Ziegler, Chairman  
Misty Belford, Vice Chairman  
John Craig  
Karen Henderson  
Amy Knessy

**SUPERINTENDENT**

Dr. Desmond Blackburn



**SECONDARY LEADING & LEARNING**

Dr. Laura C. Rhinehart  
Associate Superintendent

**OFFICE OF CAREER & TECHNICAL EDUCATION**

Janice Scholz  
Director

# Table of Contents

<b>Introduction</b> .....	1
<b>Industry Certification Results; 6 Year Summary</b> .....	3
<b>Industry Certification District Results</b> .....	7
<b>Industry Certification Results By High School</b> .....	11
Astronaut High School .....	13
Bayside High School .....	14
Cocoa Beach Jr./Sr. High School.....	15
Cocoa High School.....	16
Eau Gallie High School.....	17
Edgewood Jr./Sr. High School .....	18
Heritage High School.....	19
Melbourne High School.....	20
Merritt Island High School .....	21
Palm Bay High School.....	22
Rockledge High School.....	23
Satellite High School .....	24
Space Coast Jr./Sr. High School.....	25
Titusville High School .....	26
Viera High School.....	27
Westshore High School .....	28
<b>Industry Certification Results By Middle School</b> .....	29
Cocoa Beach.....	31
Cocoa .....	32
Central .....	33
DeLaura.....	34
Hoover .....	35
Jackson.....	36
Jefferson .....	37
Johnson.....	38
Kennedy .....	39
Madison .....	40
McNair .....	41
Space Coast.....	42
Stone.....	43
Southwest.....	44
<b>Industry Certification Results By Assessment</b> .....	45
<b>Industry Certification Results By Program</b> .....	55
<b>Industry Certification Appendix</b> .....	65

**This page intentionally left blank.**

## **Introduction**

Today's educational environment is heavily focused on accountability, standards and assessment. At the same time, industry is seeking assurances that job seekers have the skills required to fill their openings. At the local, state and federal levels, CTE programs are being tasked with providing students with credentials and certifications which are recognized and valued by our business and industry partners. Having a strong connection to industry, career and technical education has long understood the importance of industry recognized credential and certifications.

### **BPS Graduation Requirement**

To ensure that every BPS graduate is postsecondary and/or workforce ready, student are required to complete a program of study which includes a minimum of 3 credits in one of the following areas:

- Approved dual enrollment, AP, IB, AICE or approved Honors Courses

**or**

- Sequential CTE program of study resulting in a credential endorsed by a national, state or local industry

### **State Requirement – CAPE ACT Academies**

At the state level, Florida Statutes require that career and professional academies be coordinated with the appropriate industry indicating that all components of the program are relevant and appropriate to prepare the student for further education and for employment in that industry. Florida Statutes further define that the State Board of Education together with the Workforce Florida, Inc. will develop and adopt rules for implementing an industry certification process, based upon the highest available national standards for specific industry certification, to ensure student skill proficiency and to address emerging labor market and industry trends.

During the 2014 Florida Legislative Session, CAPE Industry Certifications are to be delivered in career themed courses as identified by each district and to include middle schools. Additional lists of certifications have been branded and placed on lists for Middle School students. This is the CAPE Digital Tool Certificate list. The CAPE Digital Tool Certificate list will contain no more than 15 certificates limited to the areas of word processing spreadsheets' sound, motion and color presentations; digital arts; cybersecurity; and coding appropriate to middle school students. Each district must allocate at least 80 percent of the funds provided for industry certification to the program that generated the funds.

<http://www.flsenate.gov/Session/Bill/2014/0850/Amendment/796932/PDF>

### **State Requirement – High School Grade and Diploma Designations**

Starting with SY 2009-10, Florida Statutes required a portion of the high school grade be determined by students' participation and performance in industry certifications, along with AP, IB, AICE and dual enrollment. Florida Statutes further expand the requirements for CTE industry certification by including student attainment of CTE industry certifications as one of the two Standard High School Diploma Designations.

## **Federal Requirements**

At the federal level, the Carl D. Perkins Career and Technical Education Act was reauthorized in 2006 and required student attainment of career and technical skill proficiencies, including student achievement on technical assessments that are aligned with industry-recognized standards. They are designed to measure the extent CTE concentrators (3 credits in the same CTE program) are leaving high school with validated technical skills. The Florida DOE approves the Technical Skill Attainment List using the following criteria: requires a minimum of 150 hours instruction, is occupationally specific, is a State or federally regulated professional license, and the certifying agency is accredited.

In response to the federal requirements, future district Perkins Act federal funding to BPS includes performance measures, targets and potential sanctions regarding Technical Skill Attainment for program concentrators. The SY 2016-2017 targets for BPS, established by the Florida DOE, is 93.47%.

In addition to the local, state and federal requirements for student industry certification, teachers and administrators can use assessment results to learn about student's skills as well as learn about the effectiveness of instruction and then apply that to instructional improvements. Assessment can be one of the most effective tools for increasing student achievement. By using assessment data for instructional purposes, teachers can improve program curriculum, identify instructional needs and maintain a continuous improvement process.

Focused on the new vision of Career and Technical Education, assessments are to be utilized for CTE students as they participate and/or complete their technical program of study. Assessments, while required at the federal, state and district levels, measure student understanding of both the knowledge and skills that are the foundation of the CTE program.

It is imperative that teachers and administrators maintain a positive perception of the value of technical skill attainment. Not only does it meet new local, state and federal requirements for CTE programs, assessments can provide a continuous improvement model for CTE instruction. Industry certifications can also provide business and industry with the assurance that CTE concentrators have the skills required to fill their openings; a win-win situation for all.

# **Industry Certification Results Six Year Summary**



**This page intentionally left blank.**



# 2015-2016 Industry Certification Results

## Past 6 Years

Year	# Students Identified	# Participants	# Passing	# Failing	# Completing Participants	% Participants	% Passing	% Failing	Cost of Assessments
2015-16	5,883	5,844	3,900	1,326	5,226	99%	75%	25%	\$ 366,515.06
2014-15	5,517	5,419	3,395	1,126	4,521	98%	75%	25%	\$ 300,504.16
2013-14	4,760	4,737	3,180	942	4,122	100%	77%	23%	\$ 265,949.13
2012-13	3,716	3,513	2,447	780	3,227	95%	76%	24%	\$ 224,469.77
2011-12	3,101	3,051	1,859	718	2,577	98%	72%	28%	\$ 147,739.39
2010-11	2,638	2,318	1,201	873	2,074	88%	58%	42%	\$ 116,330.44

**This page intentionally left blank.**

# Industry Certification District Results



**This page intentionally left blank.**

## 2015-16 Industry Certification Results

2015-16 District Industry Certification															2015-16 Senior Industry Certification Statistics	
School	# Students Identified	# Participants	# Passing	# Failing	# In Progress	# Completing Participants	% Participants	% Passing	% Failing	% In Progress	% Completing Participants	Cost of Assessments & Test Prep Used	Bonus FTE Calculation	*Potential Bonus FTE earned in 15-16	Unduplicated Count of Seniors with Industry Certifications	# Industry Certifications Gained by Seniors of 2016
AHS	622	622	376	236	10	612	100%	61%	39%	2%	98%	\$ 25,827.42	44.2	\$ 182,855.13	118	135
BHS	613	613	528	85	0	613	100%	86%	14%	0%	100%	\$ 27,992.35	40.6	\$ 167,961.95	239	346
CBHS	121	121	48	46	27	94	100%	51%	49%	22%	78%	\$ 6,714.00	7.2	\$ 29,786.36	18	31
CHS	175	175	115	60	0	175	100%	66%	34%	0%	100%	\$ 27,653.78	11.2	\$ 46,334.33	75	85
EGHS	335	335	160	117	58	277	100%	58%	42%	17%	83%	\$ 19,839.97	14.8	\$ 61,227.51	115	117
EHS	84	84	43	41	0	84	100%	51%	49%	0%	100%	\$ 3,399.45	4.3	\$ 17,789.07	13	19
HHS	619	618	339	155	125	494	100%	69%	31%	20%	80%	\$ 47,719.86	39.5	\$ 163,411.26	156	205
MHS	677	675	482	78	113	560	100%	86%	14%	17%	83%	\$ 40,682.19	56.6	\$ 234,153.86	213	278
MIHS	253	249	188	39	21	227	98%	83%	17%	8%	91%	\$ 24,660.00	30.6	\$ 126,592.01	116	159
PBMHS	230	224	169	54	0	223	97%	76%	24%	0%	100%	\$ 15,207.08	9.8	\$ 40,542.54	123	124
RHS	243	241	173	49	19	222	99%	78%	22%	8%	92%	\$ 15,405.32	16.5	\$ 68,260.40	138	157
SCHS	315	315	240	31	44	271	100%	89%	11%	14%	86%	\$ 20,234.85	32.8	\$ 135,693.40	72	127
SHS	313	308	163	125	20	288	98%	57%	43%	6%	94%	\$ 18,508.80	19.7	\$ 81,498.78	128	129
THS	605	605	466	111	28	577	100%	81%	19%	5%	95%	\$ 37,861.81	42.6	\$ 176,235.94	167	260
VHS	678	659	411	99	150	510	97%	81%	19%	23%	77%	\$ 34,544.18	48.5	\$ 200,644.21	152	222
WSHS	5	5	1	4	0	5	100%	20%	80%	0%	100%	\$ 264.00	0.1	\$ 413.70	1	1
<b>High School Total</b>	<b>5,883</b>	<b>5,844</b>	<b>3,901</b>	<b>1,326</b>	<b>615</b>	<b>5,227</b>	<b>99.3%</b>	<b>74.63%</b>	<b>25.37%</b>	<b>10.5%</b>	<b>89.4%</b>	<b>\$ 366,515.06</b>	<b>419.0</b>	<b>\$ 1,733,400.47</b>	<b>1,844</b>	<b>2,395</b>

**This page intentionally left blank.**

# Industry Certification Results By School



**This page intentionally left blank.**



# 2015-2016 Industry Certification Results

## Astronaut

School	Program	Assessment	Teacher of Record	School Grade	# Students Identified	# Participants	# In Progress	# Passing	# Failing	# Completing Participants	Funding Weights	Potential CAPE Funding \$	% Participants	% Passing	% Failing	% In Progress	% Completing Participants	Cost of Assessments & Test Prep Used	Potential Bonus FTE Calculation
AHS	Bus Software Appl	MOS Bundle	Ament	X	6	6	0	6	0	6	0.2	\$ 4,964.39	100%	100%	0%	0%	100%	\$1,540.00	1.2
AHS	Bus Software Appl	MOS Master	Ament	X	3	3	0	3	0	3	0.2	\$ 2,482.20	100%	100%	0%	0%	100%		0.6
AHS	CCC	MOS Bundle	Ament	X	23	23	10	13	0	13	0.2	\$ 10,756.18	100%	100%	0%	43%	57%		2.6
AHS	Emerging Tech Business	MOS Bundle	Ament	X	5	5	0	5	0	5	0.2	\$ 4,136.99	100%	100%	0%	0%	100%		1.0
AHS	User Interface Dsgn	Adobe: Dreamweaver	Ament	X	2	2	0	0	2	2	0.2	\$ -	100%	0%	100%	0%	100%		0.0
AHS	User Interface Dsgn	Adobe: Flash	Ament	X	1	1	0	0	1	1	0.2	\$ -	100%	0%	100%	0%	100%		0.0
AHS	Construction Tech	OSHA-10	Dunlap		25	25	0	25	0	25	0	\$ -	100%	100%	0%	0%	100%	\$255.00	0.0
AHS	Patient Care Assisting	C N A	McCain	X	23	23	0	23	0	23	0.1	\$ 9,515.09	100%	100%	0%	0%	100%	\$3,220.00	2.3
AHS	Patient Care Assisting	CPR/AED/BLS for Healthcare Providers	McCain		56	56	0	56	0	56	0	\$ -	100%	100%	0%	0%	100%		0.0
AHS	Food Science	ServSafe Manager	Morganthal	X	67	67	0	39	28	67	0.2	\$ 32,268.55	100%	58%	42%	0%	100%	\$5,378.36	7.8
AHS	Dig Media/MM	Adobe: Illustrator	Reda, J	X	6	6	0	1	5	6	0.1	\$ 413.70	100%	17%	83%	0%	100%	\$9,233.06	0.1
AHS	Dig Media/MM	Adobe: Photoshop	Reda, J	X	108	108	0	72	36	108	0.1	\$ 29,786.36	100%	67%	33%	0%	100%		7.2
AHS	Dig Media/MM	Adobe: Premiere Pro	Reda, J	X	62	62	0	8	54	62	0.1	\$ 3,309.60	100%	13%	87%	0%	100%		0.8
AHS	Digital Design	Adobe: Illustrator	Reda, J	X	6	6	0	3	3	6	0.1	\$ 1,241.10	100%	50%	50%	0%	100%		0.3
AHS	Digital Design	Adobe: InDesign	Reda, J	X	16	16	0	9	7	16	0.1	\$ 3,723.29	100%	56%	44%	0%	100%		0.9
AHS	Digital Design	Adobe: Photoshop	Reda, J	X	2	2	0	1	1	2	0.1	\$ 413.70	100%	50%	50%	0%	100%		0.1
AHS	Digital Design	Adobe: Premiere Pro	Reda, J	X	1	1	0	0	1	1	0.1	\$ -	100%	0%	100%	0%	100%		0.0
AHS	Technical Design	Autodesk - Certified User AutoCAD	Reda, K	X	67	67	0	31	36	67	0.2	\$ 25,649.36	100%	46%	54%	0%	100%	\$3,801.00	6.2
AHS	Technical Design	Autodesk - Certified User Inventor	Reda, K	X	23	23	0	13	10	23	0.2	\$ 10,756.18	100%	57%	43%	0%	100%		2.6
AHS	Technical Design	Autodesk - Certified User Revit	Reda, K	X	62	62	0	46	16	62	0.2	\$ 38,060.34	100%	74%	26%	0%	100%		9.2
AHS	Engineering Technology	Autodesk - Certified User AutoCAD	Reda, K	X	10	10	0	1	9	10	0.2	\$ 827.40	100%	10%	90%	0%	100%		0.2
AHS	Engineering Technology	Autodesk - Certified User Inventor	Reda, K	X	1	1	0	0	1	1	0.2	\$ -	100%	0%	100%	0%	100%		0.0
AHS	Engineering Technology	Autodesk - Certified User Revit	Reda, K	X	2	2	0	2	0	2	0.2	\$ 1,654.80	100%	100%	0%	0%	100%		0.4
AHS	Engineering Technology	Solidworks	Reda, K	X	19	19	0	1	18	19	0.2	\$ 827.40	100%	5%	95%	0%	100%	\$1,100.00	0.2
AHS	Emergency Medical Responder	CPR/AED/BLS for Healthcare Providers	Wallace		13	13	0	13	0	13	0	\$ -	100%	100%	0%	0%	100%		0.0
AHS	Emergency Medical Responder	EMR	Wallace	X	13	13	0	5	8	13	0.1	\$ 2,068.50	100%	38%	62%	0%	100%	\$1,300.00	0.5
<b>School Total:</b>					<b>622</b>	<b>622</b>	<b>10</b>	<b>376</b>	<b>236</b>	<b>612</b>		<b>\$ 182,855.13</b>	<b>100%</b>	<b>61%</b>	<b>39%</b>	<b>2%</b>	<b>98%</b>	<b>\$25,827.42</b>	<b>44.2</b>

# 2015-2016 Industry Certification Results

## Bayside

School	Program	Assessment	Teacher of	School Grade	# Students Identified	# Participants	# In Progress	# Passing	# Failing	# Completing Participants	Funding Weights	Potential CAPE Funding \$	% Participants	% Passing	% Failing	% In Progress	% Completing Participants	Cost of Assessments & Test Prep Used	Potential Bonus FTE Calculation
BHS	Culinary Arts	Safestaff Food Handler Certification	Cox	X	99	99	0	99	0	99	0	\$ -	100%	100%	0%	0%	100%	\$868.60	0.0
BHS	Culinary Arts	ServSafe Manager	Cox	X	30	30	0	16	14	30	0.2	\$ 13,238.38	100%	53%	47%	0%	100%	\$2,193.92	3.2
BHS	Culinary Arts	ProStart Certificate of Achievement	Cox	X	9	9	0	9	0	9	0.2	\$ 7,446.59	100%	100%	0%	0%	100%	\$779.00	1.8
BHS	Culinary Arts	ProStart Certificate of Achievement	Gray	X	10	10	0	10	0	10	0.2	\$ 8,273.99	100%	100%	0%	0%	100%	\$779.00	2.0
BHS	Culinary Arts	Safestaff Food Handler Certification	Gray	X	106	106	0	106	0	106	0	\$ -	100%	100%	0%	0%	100%	\$916.60	0.0
BHS	Culinary Arts	ServSafe Manager	Gray	X	27	27	0	27	0	27	0.2	\$ 22,339.77	100%	100%	0%	0%	100%	\$3,232.16	5.4
BHS	Technical Design	Autodesk - Certified User AutoCAD	Kimbrill	X	2	2	0	0	2	2	0.2	\$ -	100%	100%	0%	0%	100%	\$2,068.00	0.0
BHS	Technical Design	Autodesk - Certified User Inventor	Kimbrill	X	17	17	0	17	0	17	0.2	\$ 14,065.78	100%	100%	0%	0%	100%	\$5,292.00	3.6
BHS	Technical Design	Autodesk - Certified User Revit	Kimbrill	X	22	22	0	19	3	22	0.2	\$ 15,720.58	100%	86%	14%	0%	100%	\$2,666.00	1.8
BHS	Engineering Technology	Solidworks	Mitchell	X	26	26	0	9	17	26	0.2	\$ 7,446.59	100%	35%	65%	0%	100%	\$5,292.00	3.6
BHS	Health & Wellness	CVMAA	Parr	X	36	36	0	36	0	36	0.1	\$ 14,893.18	100%	100%	0%	0%	100%	\$2,666.00	1.8
BHS	Health & Wellness	CPRA/AED/BLS for Healthcare Providers	Parr	X	24	24	0	24	0	24	0	\$ -	100%	100%	0%	0%	100%	\$5,292.00	3.6
BHS	Health & Wellness	CPRA/AED/BLS for Healthcare Providers	Parr	X	31	31	0	31	0	31	0.1	\$ 12,824.68	100%	100%	0%	0%	100%	\$1,000.00	3.1
BHS	TV Production	AVID	Potter	X	2	2	0	0	2	2	0.2	\$ -	100%	100%	0%	0%	100%	\$1,000.00	0.0
BHS	Digital Design	Adobe: Flash	Robertson	X	44	44	0	27	17	44	0.1	\$ 11,169.88	100%	61%	39%	0%	100%	\$6,097.07	2.7
BHS	Digital Design	Adobe: Illustrator	Robertson	X	19	19	0	16	3	19	0.1	\$ 6,619.19	100%	84%	16%	0%	100%	\$6,097.07	2.7
BHS	Digital Design	Adobe: InDesign	Robertson	X	19	19	0	16	3	19	0.1	\$ 6,619.19	100%	84%	16%	0%	100%	\$6,097.07	2.7
BHS	Digital Design	Adobe: Photoshop	Robertson	X	16	16	0	14	2	16	0.1	\$ 5,791.79	100%	89%	13%	0%	100%	\$1,410.00	0.3
BHS	Digital Design	Adobe: Illustrator	Robertson	X	36	36	0	31	5	36	0.1	\$ 12,824.68	100%	86%	14%	0%	100%	\$2,666.00	1.8
BHS	Comm Tech	Adobe: InDesign	Robertson	X	25	25	0	18	7	25	0.1	\$ 7,446.59	100%	72%	28%	0%	100%	\$2,666.00	1.8
BHS	Comm Tech	Adobe: Photoshop	Robertson	X	13	13	0	5	8	13	0.1	\$ 2,068.50	100%	38%	62%	0%	100%	\$2,666.00	0.5
BHS	Comm Tech	Adobe: Dreamweaver	Robertson	X	1	1	0	0	1	1	0.2	\$ -	100%	0%	100%	0%	100%	\$2,666.00	0.0
BHS	Adv Tech App	Adobe: Photoshop	Robertson	X	3	3	0	3	0	3	0.1	\$ 1,241.10	100%	100%	0%	0%	100%	\$2,666.00	0.0
BHS	Adv Tech App	Adobe: Illustrator	Robertson	X	1	1	0	0	1	1	0.1	\$ -	100%	0%	100%	0%	100%	\$2,666.00	0.0
BHS	Adv Tech App	Adobe: InDesign	Robertson	X	1	1	0	0	1	1	0.1	\$ -	100%	0%	100%	0%	100%	\$2,666.00	0.0
BHS	Adv Tech App	Adobe: InDesign	Robertson	X	1	1	0	0	1	1	0.1	\$ -	100%	0%	100%	0%	100%	\$2,666.00	0.0
BHS	Patent Care Assisting	C N A	Stannard	X	14	14	0	11	3	14	0.1	\$ 4,550.69	100%	79%	21%	0%	100%	\$2,666.00	1.1
<b>School Total:</b>					<b>613</b>	<b>613</b>	<b>0</b>	<b>528</b>	<b>85</b>	<b>613</b>		<b>\$ 167,961.95</b>	<b>100%</b>	<b>86%</b>	<b>14%</b>	<b>0%</b>	<b>100%</b>	<b>\$27,992.35</b>	<b>40.6</b>

# 2015-2016 Industry Certification Results

## Cocoa Beach

School	Program	Assessment	Teacher of	School Grade	# Students Identified	# Participants	# In Progress	# Passing	# Failing	# Completing Participants	Funding Weights	Potential Funding \$	% Participants	% Passing	% Failing	% In Progress	% Completing Participants	Cost of Assessments & Test Prep Used	Potential Bonus FTE Calculation
CBHS	GIS Technology	GIS Technician	Brainard	X	2	2	0	2	0	2	0.1	\$ 827.40	100%	100%	0%	0%	100%	\$1,850.00	0.2
CBHS	Int'l Business	MOS Bundle	Friedlander	X	87	87	27	31	29	60	0.2	\$ 25,649.36	100%	52%	48%	31%	69%	\$4,532.00	6.2
CBHS	Fashion Design Services	NOCTI - Apparel & Text Prod & Mer	Lerbyel		10	10	0	7	3	10	0	\$ -	100%	70%	30%	0%	100%	\$332.00	0.0
CBHS	Marketing Management	Adobe: InDesign	Moore	X	22	22	0	8	14	22	0.1	\$ 3,309.60	100%	36%	64%	0%	100%		0.8
<b>School Total:</b>					<b>121</b>	<b>121</b>	<b>27</b>	<b>48</b>	<b>46</b>	<b>94</b>		<b>\$ 29,786.36</b>	<b>100%</b>	<b>51%</b>	<b>49%</b>	<b>22%</b>	<b>78%</b>	<b>\$6,714.00</b>	<b>7.2</b>

# 2015-2016 Industry Certification Results

## Cocoa

School	Program	Assessment	Teacher of	School Grade	# Students Identified	# Participants	# In Progress	# Passing	# Failing	# Completing Participants	Funding Weights	Potential Funding \$	% Participants	% Passing	% Failing	% In Progress	% Completing Participants	Cost of Assessments & Test Prep Used	Potential Bonus FTE Calculation
CHS	Technical Design	Autodesk Certified User - AutoCad	Auxier	X	15	15	0	10	5	15	0.2	\$ 8,273.99	100%	67%	33%	0%	100%	\$660.00	2.0
CHS	Accounting	Intuit: Quick Books	Deese	X	11	11	0	11	0	11	0.2	\$ 9,101.39	100%	100%	0%	0%	100%	\$484.00	2.2
CHS	PC Support	MTA Windows OS Fundamentals	Deese	X	6	6	0	2	4	6	0.1	\$ 827.40	100%	33%	67%	0%	100%	\$396.00	0.2
CHS	Culinary Arts	SafesStaff Food Handler Certification	Knight	X	68	68	0	68	0	68	0	-	100%	100%	0%	0%	100%	\$836.60	0.0
CHS	Culinary Arts	ServSafe Manager	Knight	X	22	22	0	4	18	22	0.2	\$ 3,309.60	100%	18%	82%	0%	100%	\$4,354.70	0.8
CHS	Digital Design	Adobe: Illustrator	Thomas	X	2	2	0	0	2	2	0.1	-	100%	0%	100%	0%	100%	\$325.00	0.0
CHS	Digital Design	Adobe: InDesign	Thomas	X	3	3	0	0	3	3	0.1	-	100%	0%	100%	0%	100%	\$1,470.00	0.6
CHS	Health & Wellness	CMAA	Mannes	X	10	10	0	6	4	10	0.1	\$ 2,482.20	100%	60%	40%	0%	100%	\$5,525.08	0.0
CHS	Web Development	Adobe: Dreamweaver	Ocker	X	9	9	0	0	9	9	0.2	-	100%	0%	100%	0%	100%	\$2,558.40	1.4
CHS	Automotive Collision	FLADA	Riffe	X	29	29	0	14	15	29	0.1	\$ 5,791.79	100%	48%	52%	0%	100%	\$11,044.00	3.0
CHS	CCC	MOS Bundle	Ocker	X	6	6	0	5	1	6	0.2	\$ 4,136.99	100%	83%	17%	0%	100%	\$11,044.00	1.0
CHS	CCC	MOS Bundle	Thomas	X	144	144	64	15	65	80	0.2	\$ 12,410.98	100%	19%	81%	44%	56%	\$11,044.00	3.0
<b>School Total:</b>					<b>175</b>	<b>175</b>	<b>0</b>	<b>115</b>	<b>60</b>	<b>175</b>		<b>\$ 46,334.33</b>	<b>100.0%</b>	<b>65.7%</b>	<b>34.3%</b>	<b>0%</b>	<b>100%</b>	<b>\$27,653.78</b>	<b>11.2</b>

# 2015-2016 Industry Certification Results

## Eau Gallie

School	Program	Assessment	Teacher of	School Grade	# Students Identified	# Participants	# In Progress	# Passing	# Failing	# Completing Participants	Funding Weights	Potential Funding \$	% Participants	% Passing	% Failing	% In Progress	% Completing Participants	Cost of Assessments & Test Prep Used	Potential Bonus FTE Calculation
EGHS	CCC	MOS Bundle	Barton	X	68	68	58	10	0	10	0.2	\$ 8,273.99	100%	100%	0%	85%	15%	\$3,205.45	2.0
EGHS	Health & Wellness	GPR	Berry		18	18	0	18	0	18	0	\$ -	100%	100%	0%	0%	100%	\$460.00	0.0
EGHS	Early Childhood Ed	Staff Credential	Dilger		11	11	0	11	0	11	0	\$ -	100%	100%	0%	0%	100%	\$460.00	0.0
EGHS	Early Childhood Ed	Intro to Childcare Training Certificate	Dilger		12	12	0	12	0	12	0	\$ -	100%	100%	0%	0%	100%	\$460.00	0.0
EGHS	Marine Tech	FLADA	Frahm	X	28	28	0	10	18	28	0.1	\$ 4,136.99	100%	36%	64%	0%	100%	\$1,678.95	1.0
EGHS	Digital Media/MM	Adobe: Dreamweaver	Keener	X	8	8	0	0	8	8	0.2	\$ -	100%	0%	100%	0%	100%	\$7,165.07	0.0
EGHS	Digital Media/MM	Adobe: Photoshop	Keener	X	58	58	0	15	43	58	0.1	\$ 6,205.49	100%	26%	74%	0%	100%	\$ -	1.5
EGHS	Digital Media/MM	Adobe: Flash	Keener	X	1	1	0	0	1	1	0.2	\$ -	100%	0%	100%	0%	100%	\$ -	0.0
EGHS	Digital Media/MM	Adobe: Illustrator	Keener	X	1	1	0	0	1	1	0.1	\$ -	100%	0%	100%	0%	100%	\$ -	0.0
EGHS	Digital Design	Adobe: Flash	Keener	X	2	2	0	0	2	2	0.2	\$ -	100%	0%	100%	0%	100%	\$ -	0.0
EGHS	Digital Design	Adobe: Illustrator	Keener	X	28	28	0	20	8	28	0.1	\$ 8,273.99	100%	0%	100%	0%	100%	\$ -	2.0
EGHS	Digital Design	Adobe: InDesign	Keener	X	14	14	0	10	4	14	0.1	\$ 4,136.99	100%	71%	29%	0%	100%	\$ -	1.0
EGHS	Digital Design	Adobe: Photoshop	Keener	X	9	9	0	5	4	9	0.1	\$ 2,068.50	100%	56%	44%	0%	100%	\$ -	0.5
EGHS	Technical Design	Autodesk - Certified User AutoCAD	Lustic	X	24	24	0	19	5	24	0.2	\$ 15,720.58	100%	79%	21%	0%	100%	\$1,100.00	3.8
EGHS	Health & Wellness	CMAA	McMahon	X	13	13	0	13	0	13	0.1	\$ 5,378.09	100%	100%	0%	0%	100%	\$1,911.00	1.3
EGHS	Automotive Service Tech	FLADA	Younger	X	36	36	0	17	19	36	0.1	\$ 7,032.89	100%	47%	53%	0%	100%	\$4,143.50	1.7
EGHS	AICE Art	Adobe: Photoshop	Zink	X	4	4	0	0	4	4	0.1	\$ -	100%	0%	100%	0%	100%	\$176.00	0.0
<b>School Total:</b>					<b>335</b>	<b>335</b>	<b>58</b>	<b>160</b>	<b>117</b>	<b>277</b>		<b>\$ 61,227.51</b>	<b>100.0%</b>	<b>57.8%</b>	<b>42.2%</b>	<b>17%</b>	<b>83%</b>	<b>\$19,839.97</b>	<b>14.8</b>

# 2015-2016 Industry Certification Results

## Edgewood

School	Program	Assessment	Teacher of	School Grade	# Students Identified	# Participants	# In Progress	# Passing	# Failing	# Completing Participants	Funding Weights	Potential Funding \$	% Participants	% Passing	% Failing	% In Progress	% Completing Participants	Cost of Assessments & Test Prep Used	Potential Bonus FTE Calculation
EHS	TV Production	AVID	Kyzer	X	33	33	0	33	0	33	0.1	\$ 13,652.08	100%	100%	0%	0%	100%	\$1,325.00	3.3
EHS	Digital Design	Adobe: Illustrator	Taylor	X	3	3	0	3	0	3	0.1	\$ 1,241.10	100%	100%	0%	0%	100%	\$2,074.45	0.3
EHS	Digital Design	Adobe: InDesign	Taylor	X	7	7	0	3	4	7	0.1	\$ 1,241.10	100%	43%	57%	0%	100%		0.3
EHS	Digital Design	Adobe: Photoshop	Taylor	X	41	41	0	4	37	41	0.1	\$ 1,654.80	100%	10%	90%	0%	100%		0.4
<b>School Total:</b>					<b>84</b>	<b>84</b>	<b>0</b>	<b>43</b>	<b>41</b>	<b>84</b>		<b>\$ 17,789.07</b>	<b>100.0%</b>	<b>51.2%</b>	<b>48.8%</b>	<b>0%</b>	<b>100%</b>	<b>\$ 3,399.45</b>	<b>4.3</b>

# 2015-2016 Industry Certification Results Heritage

School	Program	Assessment	Teacher	School Grade	# Students Identified	# Participants	# In Progress	# Passing	# Failing	# Completing Participants	Funding Weights	Potential Funding \$	% Participants	% Passing	% Failing	% In Progress	% Completing Participants	Cost of Assessments & Test Prep Used	Potential Bonus FTE Calculation
HHS	Automotive Service Tech	FLADA	Broud	X	42	42	0	36	6	42	0.1	\$ 14,893.18	100%	86%	14%	0%	100%	\$3,597.75	3.6
HHS	Automotive Service Tech	ASE MLR G-1	Broud	X	1	1	0	0	1	1	0.2	\$ -	100%	0%	100%	0%	100%	\$73.00	0.0
HHS	Interior Design	Chief Architect	Flemming	X	15	15	0	15	0	15	0.2	\$ 12,410.98	100%	100%	0%	0%	100%	\$675.00	3.0
HHS	Drafting	Autodesk - Certified User AutoCAD	Flemming	X	16	16	0	8	8	16	0.2	\$ 6,619.19	100%	50%	50%	0%	100%	\$748.00	1.6
HHS	Health & Wellness	CMAA	Luna	X	84	84	0	50	34	84	0.1	\$ 20,684.97	100%	60%	40%	0%	100%	\$13,083.00	5.0
HHS	Health & Wellness	CHR/AED/BLS for Healthcare Providers	Luna	X	67	67	0	67	0	67	0	\$ -	100%	100%	0%	0%	100%	\$ -	0.0
HHS	Business S & Mgmt	MOS Bundle	Paine	X	149	149	125	23	2	25	0.2	\$ 19,030.17	100%	92%	8%	84%	17%	\$4,818.00	4.6
HHS	Automation & Production	MOS Bundle	Paine	X	26	26	0	21	5	26	0.2	\$ 17,375.37	100%	81%	19%	0%	100%	\$2,666.00	0.0
HHS	Business S & Mgmt	MOS Bundle	Santitas	X	0	0	0	0	0	0	0	\$ -	0%	0%	0%	0%	0%	\$4,818.00	7.8
HHS	Food Science	MOS Bundle	Stengel	X	42	42	0	39	3	42	0.2	\$ 12,410.98	100%	25%	75%	0%	100%	\$6,343.11	3.0
HHS	Medical Admin Specialist	Service Manager	Thompson	X	60	60	0	15	45	60	0.2	\$ 14,893.18	100%	86%	14%	0%	100%	\$6,762.00	3.6
HHS	Medical Admin Specialist	CMAA	Thompson	X	42	42	0	36	6	42	0.1	\$ 41,370	100%	25%	75%	0%	100%	\$ -	0.1
HHS	Intro to Info Tech	MTA Windows OS Fundamentals	Trotman	X	4	4	0	1	3	4	0.1	\$ 827.40	100%	11%	89%	0%	100%	\$ -	0.2
HHS	Tech Support - Client	MTA Windows OS Fundamentals	Stengel	X	18	18	0	2	16	18	0.1	\$ 827.40	100%	100%	0%	0%	100%	\$ -	0.2
HHS	Tech Support - Client	MOS Bundle	Stengel	X	1	1	0	1	0	1	0.2	\$ 4,136.99	100%	100%	0%	0%	100%	\$1,936.00	1.0
HHS	PC Support	MTA Windows OS Fundamentals	Trotman	X	21	21	0	10	11	21	0.1	\$ 413.70	100%	48%	52%	0%	100%	\$ -	0.1
HHS	PC Support	MTA Networking Fundamentals	Trotman	X	1	1	0	1	0	1	0.1	\$ 827.40	100%	100%	0%	0%	100%	\$ -	0.2
HHS	PC Support	MTA Database Admin Fundamentals	Trotman	X	1	1	0	1	0	1	0.2	\$ 1,654.80	100%	57%	43%	0%	100%	\$ -	0.4
HHS	Water Treatment	MTA Security Fundamentals	Trotman	X	7	7	0	4	3	7	0.1	\$ 3,723.29	95%	45%	55%	0%	100%	\$2,200.00	0.9
HHS	Environmental Water	Water Treatment Plant Operator C	Vahlsing	X	21	20	0	9	11	20	0.1	\$ -	100%	0%	100%	0%	100%	\$ -	0.0
HHS	Environmental Water	Waste Water Treatment Plant Operator C	Vahlsing	X	1	1	0	0	1	1	0.1	\$ -	100%	0%	100%	0%	100%	\$ -	0.0
<b>School Total:</b>					<b>619</b>	<b>618</b>	<b>125</b>	<b>339</b>	<b>155</b>	<b>494</b>		<b>\$163,411.26</b>	<b>99.8%</b>	<b>68.5%</b>	<b>31.4%</b>	<b>20%</b>	<b>80%</b>	<b>\$47,719.86</b>	<b>39.5</b>

# 2015-2016 Industry Certification Results Melbourne

School	Program	Assessment	Teacher of	School Grade	# Students Identified	# Participants	# In Progress	# Passing	# Failing	# Completing Participants	Funding Weights	Potential Funding \$	% Participants	% Passing	% Failing	% In Progress	% Completing Participants	Cost of Assessments & Test Prep Used	Potential Bonus FTE Calculation
MHS	Web Development	Adobe: Dreamweaver	Angove	X	8	8	0	7	1	8	0.2	\$ 5,791.79	100%	88%	13%	0%	100%	\$5,625.07	1.4
MHS	Web Development	Adobe: Flash	Angove	X	8	8	0	6	2	8	0.2	\$ 4,964.39	100%	75%	25%	0%	100%		1.2
MHS	Web Development	Adobe: Illustrator	Angove	X	3	3	0	3	0	3	0.1	\$ 1,241.10	100%	100%	0%	0%	100%		0.3
MHS	Web Development	Adobe: Photoshop	Angove	X	5	5	0	3	0	3	0.1	\$ 1,241.10	100%	100%	0%	0%	100%		0.3
MHS	Finance Academy	MOS Bundle	Angove	X	64	64	22	42	0	42	0.2	\$ 34,750.75	100%	100%	0%	34%	66%	\$3,901.33	8.4
MHS	Digital Design	Adobe: Illustrator	Fannon	X	1	1	0	0	1	1	0.1	\$ -	100%	0%	100%	0%	100%		0.0
MHS	Digital Design	Adobe: Photoshop	Fannon	X	67	67	0	22	45	67	0.1	\$ 9,101.39	100%	33%	67%	0%	100%	\$4,640.07	2.2
MHS	Finance Academy	MOS Bundle	Fannon	X	28	28	0	27	1	28	0.2	\$ 22,339.77	100%	96%	4%	0%	100%	\$3,901.33	5.4
MHS	Culinary Arts	Safesafe Food Handler Certification	Ferguson	X	36	36	0	32	4	36	0.2	\$ 26,476.76	100%	89%	11%	0%	100%	\$4,791.65	6.4
MHS	Culinary Arts	Safesafe Manager	Ferguson	X	36	34	0	30	4	34	0.2	\$ 24,821.96	94%	88%	12%	0%	100%	\$2,666.00	6.0
MHS	Engineering Technology	Solidworks	Gabeler	X	11	11	0	11	0	11	0.1	\$ 4,550.69	100%	100%	0%	0%	100%	\$1,960.00	1.1
MHS	Health Science	CNA	Krug	X	11	11	0	11	0	11	0.1	\$ -	100%	100%	0%	0%	100%		0.0
MHS	Health Science	CPI/AED/BLIS for Healthcare Providers	Krug	X	62	62	0	62	0	62	0	\$ -	100%	100%	0%	0%	100%	\$2,100.00	1.1
MHS	Emergency/Medical Responder	EMR	Krug	X	17	17	0	11	6	17	0.1	\$ 4,550.69	100%	65%	35%	0%	100%	\$876.60	0.0
MHS	Culinary Arts	Safesafe Food Handler Certification	Ollinger	X	99	99	0	99	0	99	0.0	\$ -	100%	100%	0%	0%	100%	\$876.60	0.0
MHS	Food Science	Safesafe Manager	Ollinger	X	22	22	0	19	3	22	0.2	\$ 15,720.58	100%	86%	14%	0%	100%	\$2,481.20	3.8
MHS	Fashion Design Services	NOCTI - Apparel & Text Prod & Mer	Schmidt	X	9	9	0	5	4	9	0.0	\$ -	100%	56%	44%	0%	100%	\$876.60	0.0
MHS	Digital Design	Adobe: Illustrator	Uhing	X	1	1	0	1	0	1	0.1	\$ 413.70	100%	100%	0%	0%	100%	\$2,953.01	0.1
MHS	Digital Design	Adobe: Indesign	Uhing	X	21	21	0	15	6	21	0.1	\$ 6,205.49	100%	71%	29%	0%	100%	\$2,953.01	1.5
MHS	Digital Design	Adobe: Photoshop	Uhing	X	1	1	0	0	1	1	0.1	\$ -	100%	0%	100%	0%	100%		0.0
MHS	Finance Academy	MOS Bundle	Uhing	X	178	178	91	87	0	87	0.2	\$ 71,983.69	100%	100%	0%	51%	49%	\$3,901.33	17.4
School Total:					677	675	113	482	78	560		\$ 234,153.86	99.7%	86.1%	13.9%	16.7%	83.0%	\$ 40,682.19	56.6



# 2015-2016 Industry Certification Results

## Merritt Island

School	Program	Assessment	Teacher of	School Grade	# Students Identified	# Participants	# In Progress	# Passing	# Failing	# Completing Participants	Funding Weights	Potential Funding \$	% Participants	% Passing	% Failing	% In Progress	% Completing Participants	Cost of Assessments & Test Prep Used	Potential Bonus FTE Calculation
MHS	CCC	MOS Bundle	Burr	X	52	52	38	14	0	14	0.2	\$ 11,583.58	100%	100%	0%	73%	27%	\$2,816.00	2.8
MHS	Business Software	MOS Bundle	Burr	X	25	25	7	17	1	18	0.2	\$ 14,065.78	100%	94%	6%	28%	72%	\$2,816.00	3.4
MHS	Automotive Service Tech	FLADA	Chapman	X	14	12	0	9	3	12	0.1	\$ 3,723.29	86%	75%	25%	0%	100%	\$1,599.00	0.9
MHS	Automotive Service Tech	NATE	Chapman	X	1	1	0	1	0	1	0.2	\$ 827.40	100%	100%	0%	0%	100%	\$844.60	0.2
MHS	Web Development	Adobe: Dreamweaver	Erickson	X	39	39	0	38	1	39	0.2	\$ 31,441.15	100%	97%	3%	0%	100%	\$8,446.09	7.6
MHS	Web Development	Adobe: Flash	Erickson	X	9	9	0	9	0	9	0.2	\$ 7,446.59	100%	100%	0%	0%	100%	\$6,009.08	1.8
MHS	Digital Design	Adobe: Photoshop	Forbes	X	8	8	0	8	0	8	0.1	\$ 3,309.60	100%	100%	0%	0%	100%	\$5,009.08	0.8
MHS	Digital Design	Adobe: Flash	Forbes	X	1	1	0	1	0	1	0.2	\$ 827.40	100%	100%	0%	0%	100%	\$1,009.08	0.2
MHS	Digital Design	Adobe: InDesign	Forbes	X	27	25	0	25	0	25	0.1	\$ 10,342.48	93%	100%	0%	0%	100%	\$2,848.84	2.5
MHS	Digital Design	Adobe: Illustrator	Forbes	X	22	22	0	22	0	22	0.1	\$ 9,101.39	100%	100%	0%	0%	100%	\$2,848.84	2.2
MHS	Hosp & Tourism	ServSafe Manager	Jackson	X	8	7	0	0	7	7	0.2	\$ -	88%	0%	100%	0%	100%	\$952.99	0.0
MHS	Hosp & Tourism	ServSafe Manager	Jackson	X	6	6	0	0	6	6	0.2	\$ -	100%	0%	100%	0%	100%	\$952.99	0.0
MHS	Hosp & Tourism	MOS Bundle	Little	X	15	15	7	5	3	8	0.2	\$ 4,136.99	100%	63%	38%	47%	53%	\$1,760.00	1.0
MHS	Marketing Management	MOS Bundle	Little	X	24	24	7	8	9	17	0.2	\$ 6,619.19	100%	47%	53%	29%	71%	\$880.00	1.6
MHS	PLTW - ENGINEERING	Autodesk - Certified User Inventor	Parker	X	37	38	0	28	9	37	0.2	\$ 23,167.17	103%	76%	24%	0%	97%	\$1,672.00	5.6
MHS	Early Childhood Ed	Staff Credential	Pearlman		4	4	0	4	0	4	0	\$ -	100%	100%	0%	0%	100%	\$240.00	0.0
MHS	Early Childhood Ed	Intro to Childcare Training Certificate	Pearlman		13	13	0	13	0	13	0	\$ -	100%	100%	0%	0%	100%	\$240.00	0.0
<b>School Total:</b>					<b>253</b>	<b>249</b>	<b>21</b>	<b>188</b>	<b>39</b>	<b>227</b>		<b>\$ 126,592.01</b>	<b>98.4%</b>	<b>82.8%</b>	<b>17.2%</b>	<b>8%</b>	<b>91%</b>	<b>\$24,660.00</b>	<b>30.6</b>

# 2015-2016 Industry Certification Results

## Palm Bay Magnet

School	Program	Assessment	Teacher	School Grade	# Students Identified	# Participants	# In Progress	# Passing	# Failing	# Completing Participants	Funding Weights	Potential Funding \$	% Participants	% Passing	% Failing	% In Progress	% Completing Participants	Cost of Assessments & Test Prep Used	Potential Bonus FTE Calculation
PBMS	Technical Design	Autodesk - Certified User Inventor	Allen, D	X	18	18	0	10	8	18	0.2	\$ 8,273.99	100%	56%	44%	0%	100%	\$880.00	2.0
PBMS	Technical Design	Autodesk - Certified User AutoCAD	Allen, D	X	1	1	0	0	1	1	0.2	\$ -	100%	0%	100%	0%	100%		0.0
PBMS	Technical Design	Solidworks	Allen, D	X	2	2	0	1	1	2	0.2	\$ 827.40	100%	50%	50%	0%	100%	\$1,378.00	0.2
PBMS	Engineering Technology	Solidworks	Allen, R	X	14	14	0	7	6	13	0.2	\$ 5,791.79	100%	54%	46%	0%	93%	\$4,044.00	1.4
PBMS	Fashion Design Services	NOCTI - Apparel & Text Prod & Mer	Baker	X	7	7	0	6	1	7	0	\$ -	100%	86%	14%	0%	100%	\$276.00	0.0
PBMS	Patient Care Assisting	CNA	Bassile	X	13	13	0	13	0	13	0.1	\$ 5,378.09	100%	100%	0%	0%	100%	\$1,960.00	1.3
PBMS	Health Science	CPR/AED/BLS for Healthcare Providers	Bassile	X	36	36	0	36	0	36	0	\$ -	100%	100%	0%	0%	100%		0.0
PBMS	Early Childhood Ed	Staff Credential	Chappell		1	1	0	1	0	1	0	\$ -	100%	100%	0%	0%	100%	\$320.00	0.0
PBMS	Early Childhood Ed	Intro to Childcare Training Certificate	Chappell		7	7	0	7	0	7	0	\$ -	100%	100%	0%	0%	100%		0.0
PBMS	Comm Tech	Adobe: Illustrator	Fine	X	7	1	0	0	1	1	0.1	\$ -	14%	0%	100%	0%	100%	\$6,009.08	0.0
PBMS	Gaming	Adobe: Photoshop	Fine	X	41	41	0	15	26	41	0.1	\$ 6,205.49	100%	37%	63%	0%	100%		1.5
PBMS	Culinary Arts	SafeStaff Food Handler Certification	Ho	X	39	39	0	39	0	39	0	\$ -	100%	100%	0%	0%	100%		0.0
PBMS	Culinary Arts	ServSafe Manager	Ho	X	27	27	0	17	10	27	0.2	\$ 14,065.78	100%	63%	37%	0%	100%		3.4
PBMS	Criminal Justice	NOCTI - Criminal Justice	Morrison		17	17	0	17	0	17	0	\$ -	100%	100%	0%	0%	100%	\$340.00	0.0
<b>School Total:</b>					<b>230</b>	<b>224</b>	<b>0</b>	<b>169</b>	<b>54</b>	<b>223</b>		<b>\$ 40,542.54</b>	<b>97.4%</b>	<b>75.8%</b>	<b>24.2%</b>	<b>0.0%</b>	<b>99.6%</b>	<b>\$15,207.08</b>	<b>9.8</b>

# 2015-2016 Industry Certification Results

## Rockledge

School	Program	Assessment	Teacher of	School Grade	# Students Identified	# Participants	# In Progress	# Passing	# Failing	# Completing Participants	Funding Weights	Potential Funding \$	% Participants	% Passing	% Failing	% In Progress	% Completing Participants	Cost of Assessments & Test Prep Used	Potential Bonus FTE Calculation
RHS	Patient Care Assisting	C N A	Byczek	X	14	14	0	14	0	14	0.1	\$ 5,791.79	100%	100%	0%	0%	100%	\$2,100.00	1.4
RHS	Patient Care Assisting	CPH/AED/BLS for Healthcare Providers	Byczek	X	40	40	0	40	0	40	0	\$ -	100%	100%	0%	0%	100%	\$1,775.00	0.0
RHS	Criminal Justice	ALP	Harrigan	X	16	16	0	8	8	16	0.2	\$ 6,619.19	100%	50%	50%	0%	100%	\$1,775.00	1.6
RHS	Hosp & Tourism	ServSafe Manager	Kearns	X	22	21	0	4	17	21	0.2	\$ 3,309.60	95%	19%	81%	0%	100%	\$756.49	0.8
RHS	Hosp & Tourism	MOS Bundle	Kearns	X	19	19	19	0	0	0	0.2	\$ -	100%	0%	0%	100%	0%	\$836.00	0.0
RHS	Fashion Design Services	NOCTI - Apparel & Text Prod & Mer	Pingston	X	10	10	0	10	0	10	0	\$ -	100%	100%	0%	0%	100%	\$340.00	0.0
RHS	Technical Design	Autodesk - Certified User AutoCAD	Schooley	X	20	19	0	16	3	19	0.2	\$ 13,238.38	95%	84%	16%	0%	100%	\$880.00	3.2
RHS	Technical Design	Autodesk - Certified User Revit *BETA	Schooley	X	7	7	0	7	0	7	0.2	\$ 5,791.79	100%	100%	0%	0%	100%	\$1,998.75	1.4
RHS	Automotive Service Tech	FLADA	Sebetka	X	22	22	0	15	7	22	0.1	\$ 6,205.49	100%	68%	32%	0%	100%	\$146.00	0.2
RHS	Automotive Service Tech	ASE MLR-G-1	Sebetka	X	1	1	0	1	0	1	0.2	\$ 827.40	100%	100%	0%	0%	100%	\$6,493.08	0.2
RHS	Digital Design	Adobe: Dreamweaver	Shnault	X	1	1	0	1	0	1	0.2	\$ 827.40	100%	100%	0%	0%	100%	\$6,493.08	0.2
RHS	Digital Design	Adobe: Flash	Shnault	X	14	14	0	9	5	14	0.2	\$ 7,446.59	100%	64%	36%	0%	100%	\$6,493.08	1.8
RHS	Digital Design	Adobe: Illustrator	Shnault	X	23	23	0	22	1	23	0.1	\$ 9,101.39	100%	96%	4%	0%	100%	\$6,493.08	2.2
RHS	Digital Design	Adobe: InDesign	Shnault	X	22	22	0	19	3	22	0.1	\$ 7,860.29	100%	86%	14%	0%	100%	\$6,493.08	1.9
RHS	Digital Design	Adobe: Photoshop	Shnault	X	8	8	0	3	5	8	0.1	\$ 1,241.10	100%	38%	63%	0%	100%	\$6,493.08	0.3
RHS	Criminal Justice	NOCTI - Criminal Justice	Tardiff		4	4	0	4	0	4	0	\$ -	100%	100%	0%	0%	100%	\$80.00	0.0
<b>School Total:</b>					<b>243</b>	<b>241</b>	<b>19</b>	<b>173</b>	<b>49</b>	<b>222</b>		<b>\$ 68,260.40</b>	<b>99.2%</b>	<b>77.9%</b>	<b>22.1%</b>	<b>8%</b>	<b>92%</b>	<b>\$15,405.32</b>	<b>16.5</b>

# 2015-2016 Industry Certification Results Satellite

School	Program	Assessment	Teacher of Record	School Grade	# Students Identified	# Participants	# In Progress	# Passing	# Failing	# Completing Participants	Funding Weights	Potential Funding \$	% Participants	% Passing	% Failing	% In Progress	% Completing Participants	Cost of Assessments & Test Prep Used	Potential Bonus FTE Calculation
SHS	Digital Media/MM	Adobe: Illustrator	Brooks	X	5	1	0	0	1	1	0.1	\$ -	20%	0%	100%	0%	100%		0.0
SHS	Marketing Management	Adobe: Indesign	Brooks	X	3	3	0	3	0	3	0.1	\$ 1,241.10	100%	100%	0%	0%	100%		0.3
SHS	CCC	MOS Bundle	Brooks	X	29	29	20	9	0	9	0.2	\$ 7,446.59	100%	100%	0%	69%	31%	\$2,112.00	1.8
SHS	Business Software	MOS Bundle	Brooks	X	15	15	0	9	6	15	0.2	\$ 7,446.59	100%	60%	40%	0%	100%		1.8
SHS	Fashion Design Services	NOCTI - Apparel & Text Prod & Mer	Davinroy-Gray	X	5	5	0	5	0	5	0	\$ -	100%	100%	0%	0%	100%	\$421.00	0.0
SHS	Food Science	Sensafe Manager	Doubek	X	37	37	0	9	28	37	0.2	\$ 7,446.59	100%	24%	76%	0%	100%	\$2,707.03	1.8
SHS	Technical Design	Autodesk - Certified User AutoCAD	Galszewski	X	27	26	0	23	3	26	0.2	\$ 19,030.17	96%	88%	12%	0%	100%	\$1,188.00	4.6
SHS	Automotive Service Tech	ASE MLR G-1	Pitts	X	1	1	0	1	0	1	0.2	\$ 827.40	100%	100%	0%	0%	100%	\$146.00	0.2
SHS	Automotive Service Tech	FLADA	Pitts	X	41	41	0	14	27	41	0.1	\$ 5,791.79	100%	34%	66%	0%	100%	\$3,677.70	1.4
SHS	Early Childhood Ed	Intro To Childcare Training Certificate	Schmid		7	7	0	7	0	7	0	\$ -	100%	100%	0%	0%	100%	\$300.00	0.0
SHS	Early Childhood Ed	Staff Credential	Schmid		7	7	0	7	0	7	0	\$ -	100%	100%	0%	0%	100%	\$300.00	0.0
SHS	Digital Media/MM	Adobe: Dreamweaver	Stratton	X	1	1	0	1	0	1	0.2	\$ 827.40	100%	100%	0%	0%	100%	\$7,957.07	0.2
SHS	Digital Media/MM	Adobe: Flash	Stratton	X	1	1	0	1	0	1	0.2	\$ 827.40	100%	100%	0%	0%	100%		0.2
SHS	Digital Media/MM	Adobe: Illustrator	Stratton	X	46	46	0	20	26	46	0.1	\$ 8,273.99	100%	43%	57%	0%	100%		2.0
SHS	Digital Media/MM	Adobe: Indesign	Stratton	X	26	26	0	19	7	26	0.1	\$ 7,860.29	100%	73%	27%	0%	100%		1.9
SHS	Digital Media/MM	Adobe: Photoshop	Stratton	X	61	61	0	34	27	61	0.1	\$ 14,065.78	100%	56%	44%	0%	100%		3.4
SHS	Digital Media/MM	Adobe: Premiere Pro	Stratton	X	1	1	0	1	0	1	0.1	\$ 413.70	100%	100%	0%	0%	100%		0.1
<b>School Total:</b>					<b>313</b>	<b>308</b>	<b>20</b>	<b>163</b>	<b>125</b>	<b>288</b>		<b>\$ 81,498.78</b>	<b>98.4%</b>	<b>56.6%</b>	<b>43.4%</b>	<b>6%</b>	<b>94%</b>	<b>\$18,508.80</b>	<b>19.7</b>

# 2015-2016 Industry Certification Results

## Space Coast

School	Program	Assessment	Teacher	School Grade	# Students Identified	# Participants	# In Progress	# Passing	# Failing	# Completing Participants	Funding Weights	Potential Funding \$	% Participants	% Passing	% Failing	% In Progress	% Completing Participants	Cost of Assessments & Test Prep Used	Potential Bonus FTE Calculation
SCHS	Drafting	Autodesk - Certified User AutoCAD	Gannon	X	13	13	0	13	0	13	0.2	\$ 10,756.18	100%	100%	0%	0%	100%	\$572.00	2.6
SCHS	Drafting	Autodesk - Certified User Revit	Gannon	X	12	12	0	12	0	12	0.2	\$ 9,928.79	100%	100%	0%	0%	100%		2.4
SCHS	Drafting	Autodesk - Certified User Inventor	Gannon	X	11	11	0	11	0	11	0.2	\$ 9,101.39	100%	100%	0%	0%	100%		2.2
SCHS	A/C Refrig & Heat	HVAC Excellence - A/C	Mount	X	33	33	0	20	13	33	0.2	\$ 16,547.98	100%	61%	39%	0%	100%	\$930.00	4.0
SCHS	A/C Refrig & Heat	HVAC Excellence - Electrical	Mount	X	28	28	0	21	7	28	0.2	\$ 17,375.37	100%	75%	25%	0%	100%		4.2
SCHS	A/C Refrig & Heat	NATE	Mount	X	4	4	0	4	0	4	0.2	\$ 3,309.60	100%	100%	0%	0%	100%	\$3,200.00	0.8
SCHS	A/C Refrig & Heat	NCCER	Mount	X	24	24	0	24	0	24	0.2	\$ 19,857.57	100%	100%	0%	0%	100%	\$3,069.85	4.8
SCHS	A/C Refrig & Heat	EPA	Mount	X	50	50	0	50	0	50	0	\$ -	100%	100%	0%	0%	100%	\$1,250.00	0.0
SCHS	Engineering Technology	SolidWorks	Reyes	X	15	15	0	12	3	15	0.2	\$ 9,928.79	100%	80%	20%	0%	100%	\$4,152.00	2.4
SCHS	Teacher Assisting	ParaPro	Savaglio	X	19	19	0	15	4	19	0	\$ -	100%	79%	21%	0%	100%	\$1,045.00	0.0
SCHS	Business Software	MOS Bundle	Stoppelbein	X	82	82	44	34	4	38	0.2	\$ 28,131.56	100%	89%	11%	54%	46%	\$5,016.00	6.8
SCHS	Business Software	MOS Master	Stoppelbein	X	2	2	0	2	0	2	0.2	\$ 1,654.80	100%	100%	0%	0%	100%		0.4
SCHS	TV Production	AVID	Striegel	X	22	22	0	22	0	22	0.1	\$ 9,101.39	100%	100%	0%	0%	100%	\$1,000.00	2.2
<b>School Total:</b>					<b>315</b>	<b>315</b>	<b>44</b>	<b>240</b>	<b>31</b>	<b>271</b>		<b>\$ 135,693.40</b>	<b>100.0%</b>	<b>88.6%</b>	<b>11.4%</b>	<b>14%</b>	<b>86%</b>	<b>\$20,234.85</b>	<b>32.8</b>

# 2015-2016 Industry Certification Results

## Titusville

School	Program	Assessment	Teacher	School Grade	# Students Identified	# Participants	# In Progress	# Passing	# Failing	# Completing Participants	Funding Weights	Potential Funding \$	% Participants	% Passing	% Failing	% In Progress	% Completing Participants	Cost of Assessments & Test Prep Used	Potential Bonus FTE Calculation	
THS	Digital Design	Adobe: Dreamweaver	Benson	X	1	1	0	0	1	1	0.2	\$	-	100%	0%	100%	0%	100%	\$9,761.06	0.0
THS	Digital Design	Adobe: Flash	Benson	X	16	16	0	12	4	16	0.2	\$	9,928.79	100%	75%	25%	0%	100%		2.4
THS	Digital Design	Adobe: Illustrator	Benson	X	23	23	0	22	1	23	0.1	\$	9,101.39	100%	96%	4%	0%	100%		2.2
THS	Digital Design	Adobe: Indesign	Benson	X	32	32	0	29	3	32	0.1	\$	11,997.28	100%	91%	9%	0%	100%		2.9
THS	Digital Design	Adobe: Photoshop	Benson	X	14	14	0	14	0	14	0.1	\$	5,791.79	100%	100%	0%	0%	100%		1.4
THS	Digital Design	Adobe: Premiere Pro	Benson	X	1	1	0	0	1	1	0.1	\$	-	100%	0%	100%	0%	100%		0.0
THS	TV Production	AVID	Curtis	X	4	4	0	4	0	4	0.1	\$	1,654.80	100%	100%	0%	0%	100%	\$1,000.00	0.4
THS	Web Development	Adobe: Dreamweaver	Ely	X	9	9	0	7	2	9	0.2	\$	5,791.79	100%	78%	22%	0%	100%	\$5,361.07	1.4
THS	Web Development	Adobe: Illustrator	Ely	X	1	1	0	1	0	1	0.1	\$	413.70	100%	100%	0%	0%	100%		0.1
THS	Digital Design	Adobe: Dreamweaver	Ely	X	2	2	0	1	1	2	0.2	\$	827.40	100%	50%	50%	0%	100%		0.2
THS	Digital Design	Adobe: Flash	Ely	X	4	4	0	3	1	4	0.2	\$	2,482.20	100%	75%	25%	0%	100%		0.6
THS	Digital Design	Adobe: Illustrator	Ely	X	19	19	0	18	1	19	0.1	\$	7,446.59	100%	95%	5%	0%	100%		1.8
THS	Digital Design	Adobe: Indesign	Ely	X	55	55	0	47	8	55	0.1	\$	19,443.87	100%	85%	15%	0%	100%		4.7
THS	Digital Design	Adobe: Photoshop	Ely	X	3	3	0	1	2	3	0.1	\$	413.70	100%	33%	67%	0%	100%		0.1
THS	CCC	MOS Bundle	Francis	X	30	30	0	18	12	30	0.2	\$	14,893.18	100%	60%	40%	0%	100%	\$3,916.00	3.6
THS	Patient Care Assisting	C N A	Hall	X	35	35	0	32	3	35	0.1	\$	13,238.38	100%	91%	9%	0%	100%	\$5,040.00	3.2
THS	Patient Care Assisting	CPR/AED/BLST for Healthcare Providers	Hall	X	35	35	0	32	3	35	0	\$	-	100%	91%	9%	0%	100%		0.0
THS	Patient Care Assisting	Safestaff Food Handler Certification	Hietpas	X	56	56	0	56	0	56	0	\$	-	100%	100%	0%	0%	100%	\$516.60	0.0
THS	Culinary Arts	SensSafe Manager	Hietpas	X	39	39	0	15	24	39	0.2	\$	12,410.98	100%	38%	62%	0%	100%	\$4,882.33	3.0
THS	Fashion Design Services	NOCTI - Apparel & Text Prod & Mer	Shimer	X	13	13	0	10	3	13	0	\$	-	100%	77%	23%	0%	100%	\$356.00	0.0
THS	Patient Care Assisting	CPR/AED/BLST for Healthcare Providers	Slims	X	136	136	0	136	0	136	0	\$	-	100%	100%	0%	0%	100%	\$966.00	1.0
THS	Digital Design	Adobe: Photoshop	Slims	X	19	19	0	10	9	19	0.1	\$	4,136.99	100%	53%	47%	0%	100%	\$9,916.00	1.0
THS	CCC	MOS Bundle	Slims	X	125	125	28	61	36	97	0.2	\$	50,471.33	100%	63%	37%	22%	78%	\$3,916.00	12.2
THS	Automotive Service Tech	ASE MLR G-1	Soros	X	0	0	0	0	0	0	0.2	\$	-					\$1,466.00	0.0	
THS	Automotive Service Tech	FLDA	Soros	X	20	20	0	14	6	20	0.1	\$	5,791.79	100%	70%	30%	0%	100%	\$1,998.75	1.4
<b>School Total:</b>					<b>605</b>	<b>605</b>	<b>28</b>	<b>466</b>	<b>111</b>	<b>577</b>		<b>\$ 176,235.94</b>	<b>100.0%</b>	<b>80.8%</b>	<b>19.2%</b>	<b>5%</b>	<b>95%</b>	<b>\$37,861.81</b>	<b>42.6</b>	

# 2015-2016 Industry Certification Results

## Viera

School	Program	Assessment	Teacher of	School Grade	# Students Identified	# Participants	# In Progress	# Passing	# Failing	# Completing Participants	Funding Weights	Potential Funding \$	% Participants	% Passing	% Failing	% In Progress	% Completing Participants	Cost of Assessments & Test Prep Used	Potential Bonus FTE Calculation
VHS	Early Childhood Ed	Intro to Childcare Training Certificate	Anderson		2	2	0	2	0	2	0	\$ -	100%	100%	0%	0%	100%	\$202.00	0.0
VHS	Early Childhood Ed	Staff Credential	Anderson		1	1	0	1	0	1	0	\$ -	100%	100%	0%	0%	100%	\$9,020.00	8.4
VHS	Finance Academy	MOS Bundle	Brown		169	169	127	42	0	42	0.2	\$ 34,750.75	100%	100%	0%	75%	25%	\$9,020.00	8.4
VHS	Finance Academy	MOS Master	Brown		2	2	0	2	0	2	0.2	\$ 1,654.80	100%	100%	0%	0%	100%	\$12,225.07	0.4
VHS	Adv Tech Apps	Adobe:Photoshop	Cole		30	30	0	26	4	30	0.1	\$ 10,756.18	100%	87%	13%	0%	100%	\$12,225.07	2.6
VHS	Adv Tech Apps	Adobe:Premiere Pro	Cole		3	3	0	2	1	3	0.1	\$ 827.40	100%	67%	33%	0%	100%		0.2
VHS	Comm Tech	Adobe:Illustrator	Cole		49	49	0	46	3	0	0.1	\$ 19,030.17	100%	94%	6%	0%	100%		0.0
VHS	Comm Tech	Adobe:Indesign	Cole		81	80	0	42	39	81	0.1	\$ 17,375.37	99%	52%	48%	0%	101%		4.2
VHS	Dig Media/MM	Adobe:Photoshop	Gammella		71	71	23	48	0	48	0.2	\$ 39,715.14	100%	100%	0%	32%	68%		9.6
VHS	Finance Academy	MOS Bundle	Gammella		5	5	0	5	0	5	0.2	\$ 4,136.99	100%	100%	0%	0%	100%		1.0
VHS	CCC	MOS Master	Gammella		1	1	0	1	0	1	0.2	\$ 827.40	100%	100%	0%	0%	100%		0.2
VHS	Fashion Design Services	Adobe:Illustrator	Humphrys		16	16	0	2	14	16	0.1	\$ 827.40	100%	13%	88%	0%	100%		0.2
VHS	Interior Design	Chief Architect Apprentice	Humphrys		17	17	0	12	5	17	0.2	\$ 9,928.79	100%	71%	29%	0%	100%	\$1,135.00	2.4
VHS	Health Science - Dental	CMAA	Johnston		22	22	0	22	0	22	0.1	\$ 9,101.39	100%	100%	0%	0%	100%	\$3,528.00	2.2
VHS	Health Science - Dental	CPH/AED/BSI for Healthcare Providers	Johnston		33	33	0	33	0	33	0	\$ -	100%	100%	0%	0%	100%	\$4,965.07	0.0
VHS	Comm Tech	Adobe:Illustrator	Peregrina		72	72	0	58	14	72	0.1	\$ 23,994.56	100%	81%	19%	0%	100%		5.8
VHS	Comm Tech	Adobe:Indesign	Peregrina		11	11	0	9	2	11	0.1	\$ 3,723.29	100%	82%	18%	0%	100%		0.9
VHS	Comm Tech	Adobe:Photoshop	Peregrina		51	51	0	35	16	51	0.1	\$ 14,479.48	100%	69%	31%	0%	100%		3.5
VHS	Comm Tech	Adobe:Premiere Pro	Peregrina		1	1	0	0	1	1	0.1	\$ -	100%	0%	100%	0%	100%		0.0
VHS	Food Science	SenSafe Manager	Robinson		41	23	0	23	0	23	0.1	\$ 9,515.09	56%	100%	0%	0%	100%	\$2,144.04	0.0
VHS	TV Production	AVID	Sivco		678	659	150	411	99	510		\$ 200,644.21	97.2%	80.6%	19.4%	23%	77%	\$ 34,544.18	48.5

# 2015-2016 Industry Certification Results

## West Shore

School	Program	Assessment	Teacher of	School Grade	# Students Identified	# Participants	# In Progress	# Passing	# Failing	# Completing Participants	Funding Weights	Potential Funding \$	% Participants	% Passing	% Failing	% In Progress	% Completing Participants	Cost of Assessments & Test Prep Used	Potential Bonus FTE Calculation
WSHS	Digi Art Img 3H	Adobe: Photoshop	Finch	X	1	1	0	0	1	1	0.1	\$ -	100%	0%	100%	0%	100%		0.0
WSHS	AP STUD ART 2-D	Adobe: Photoshop	Finch	X	2	2	0	1	1	2	0.1	\$ 413.70	100%	50%	50%	0%	100%	\$264.00	0.1
WSHS	DIGITAL ART IMG2	Adobe: Photoshop	Finch	X	2	2	0	0	2	2	0.1	\$ -	100%	0%	100%	0%	100%		0.0
<b>School Total:</b>					<b>5</b>	<b>5</b>	<b>0</b>	<b>1</b>	<b>4</b>	<b>5</b>		<b>\$ 413.70</b>	<b>100.0%</b>	<b>20.0%</b>	<b>80.0%</b>	<b>0%</b>	<b>100%</b>	<b>\$ 264.00</b>	<b>0.1</b>



# **Industry Certification Results By Middle/JR High School**



**This page intentionally left blank.**

# 2015-2016 Industry Certification Results

## Cocoa Beach JR

School	Assessment	# Participants	# Passing	Funding Weights	Potential Funding \$ (students capped at 0.1)	Cost of Assessments & Test Prep Used	Potential Bonus FTE Calculation
CBJR	IC3 Computing Fundamentals	10	10	0.025	\$ 1,034.25	\$6,424.00	0.250
CBJR	IC3 Key Applications	101	101	0.025	\$ 10,445.91		2.525
CBJR	IC3 Living Online	18	18	0.025	\$ 1,861.65		0.450
CBHS	MOS Bundle	1	1	0.100	\$ 413.70		0.100
<b>School Total:</b>		<b>130</b>	<b>130</b>		<b>\$ 13,755.50</b>	<b>\$6,424.00</b>	<b>3.325</b>

# 2015-2016 Industry Certification Results Cocoa JR

School	Assessment	# Participants	# Passing	Funding Weights	Potential Funding \$ (students capped at 0.1)	Cost of Assessments & Test Prep Used	Potential Bonus FTE Calculation
CHS	IC3 Computing Fundamentals	2	2	0.025	\$ 206.85		0.050
CHS	IC3 Key Applications	68	68	0.025	\$ 7,032.89		1.700
CHS	IC3 Living Online	7	7	0.025	\$ 723.97		0.175
CHS	MOS Bundle	16	16	0.100	\$ 6,619.19		1.600
<b>School Total:</b>		<b>77</b>	<b>77</b>		<b>\$ 14,582.90</b>	<b>\$0.00</b>	<b>3.525</b>

\* Cost reflected in high school results

# 2015-2016 Industry Certification Results

## Central Middle

School	Assessment	# Participants	# Passing	Funding Weights	Potential Funding \$ (students capped at 0.1)	Cost of Assessments & Test Prep Used	Potential Bonus FTE Calculation
CMS	MOS Bundle	37	37	0.100	\$ 15,306.88	\$8,775.27	3.700
CMS	MOS Master	2	2	0.100	\$ 827.40		0.200
CMS	MOS Word	19	19	0.025	\$ 1,965.07		0.475
CMS	MOS Excel	1	1	0.025	\$ 103.42		0.025
CMS	IC3 Computing Fundamentals	15	15	0.025	\$ 1,551.37	\$6,272.73	0.375
CMS	IC3 Key Applications	237	237	0.025	\$ 24,511.69		5.925
CMS	IC3 Living Online	17	17	0.025	\$ 1,758.22		0.425
<b>School Total:</b>		<b>328</b>	<b>328</b>		<b>\$ 46,024.06</b>	<b>\$15,048.00</b>	<b>11.125</b>

# 2015-2016 Industry Certification Results

## DeLaura Middle

School	Assessment	# Participants	# Passing	Funding Weights	Potential Funding \$ (students capped at 0.1)	Cost of Assessments & Test Prep Used	Potential Bonus FTE Calculation
DMS	IC3 Key Applications	68	68	0.025	\$ 7,032.89	\$6,248.00	1.700
<b>School Total:</b>		<b>68</b>	<b>68</b>		<b>\$ 7,032.89</b>	<b>\$6,248.00</b>	<b>1.700</b>

# 2015-2016 Industry Certification Results

## Hoover Middle

School	Assessment	# Participants	# Passing	Funding Weights	Potential Funding \$ (students capped at 0.1)	Cost of Assessments & Test Prep Used	Potential Bonus FTE Calculation
HMS	MOS Bundle	48	48	0.100	\$ 19,857.57	\$4,246.00	4.800
HMS	IC3 Computing Fundamentals	7	7	0.025	\$ 723.97		0.175
HMS	IC3 Key Applications	115	115	0.025	\$ 11,893.86	\$4,246.00	2.875
HMS	IC3 Living Online	11	11	0.025	\$ 1,137.67		0.275
<b>School Total:</b>		<b>181</b>	<b>181</b>		<b>\$ 33,613.08</b>	<b>\$8,492.00</b>	<b>8.125</b>

# 2015-2016 Industry Certification Results

## Jackson Middle

School	Assessment	# Participants	# Passing	Funding Weights	Potential Funding \$ (students capped at 0.1)	Cost of Assessments & Test Prep Used	Potential Bonus FTE Calculation
JAMS	MOS Bundle	21	21	0.100	\$ 8,687.69	\$2,640.00	2.100
JAMS	MOS Excel	3	3	0.025	\$ 310.27		0.075
JAMS	IC3 Computing Fundamentals	1	1	0.025	\$ 103.42	\$2,640.00	0.025
JAMS	IC3 Key Applications	45	45	0.025	\$ 4,654.12		1.125
JAMS	IC3 Living Online	3	3	0.025	\$ 310.27		0.075
<b>School Total:</b>		<b>73</b>	<b>73</b>		<b>\$ 14,065.78</b>	<b>\$5,280.00</b>	<b>3.400</b>



# 2015-2016 Industry Certification Results

## Jefferson Middle

School	Assessment	# Participants	# Passing	Funding Weights	Potential Funding \$ (students capped at 0.1)	Cost of Assessments & Test Prep Used	Potential Bonus FTE Calculation
JEMS	MOS Bundle	21	21	0.100	\$ 8,687.69	\$6,732.00	2.100
JEMS	MOS Word	7	7	0.025	\$ 723.97		0.175
JEMS	MOS Excel	13	13	0.025	\$ 1,344.52		0.325
JEMS	IC3 Computing Fundamentals	2	2	0.025	\$ 206.85	\$180.00	0.050
JEMS	IC3 Key Applications	71	71	0.025	\$ 7,343.16		1.775
<b>School Total:</b>		<b>114</b>	<b>114</b>		<b>\$ 18,306.20</b>	<b>\$6,912.00</b>	<b>4.425</b>

# 2015-2016 Industry Certification Results

## Johnson Middle

School	Assessment	# Participants	# Passing	Funding Weights	Potential Funding \$ (students capped at 0.1)	Cost of Assessments & Test Prep Used	Potential Bonus FTE Calculation
JOMS	MOS Bundle	4	4	0.100	\$ 1,654.80	\$2,728.00	0.400
JOMS	MOS Word	9	9	0.025	\$ 930.82	\$2,728.00	0.225
JOMS	MOS Excel	4	4	0.025	\$ 413.70		0.100
<b>School Total:</b>		<b>17</b>	<b>17</b>		<b>\$ 2,999.32</b>	<b>\$5,456.00</b>	<b>0.725</b>

# 2015-2016 Industry Certification Results

## Kennedy Middle

School	Assessment	# Participants	# Passing	Funding Weights	Potential Funding \$ (students capped at 0.1)	Cost of Assessments & Test Prep Used	Potential Bonus FTE Calculation
KMS	MOS Bundle	41	41	0.100	\$ 16,961.68	\$2,772.00	4.100
KMS	MOS Excel	5	5	0.025	\$ 517.12		0.125
KMS	MOS Word	6	6	0.025	\$ 620.55		0.150
KMS	IC3 Key Applications	55	55	0.025	\$ 5,688.37	\$2,772.00	1.375
<b>School Total:</b>		<b>107</b>	<b>107</b>		<b>\$ 23,787.72</b>	<b>\$5,544.00</b>	<b>5.750</b>

# 2015-2016 Industry Certification Results

## Madison Middle

School	Assessment	# Participants	# Passing	Funding Weights	Potential Funding \$ (students capped at 0.1)	Cost of Assessments & Test Prep Used	Potential Bonus FTE Calculation
MAMS	MOS Bundle	5	5	0.100	\$ 2,068.50	\$3,410.00	0.500
MAMS	MOS Excel	1	1	0.025	\$ 103.42		0.025
MAMS	MOS Word	6	6	0.025	\$ 620.55		0.150
MAMS	IC3 Computing Fundamentals	42	42	0.025	\$ 4,343.84	\$3,410.00	1.050
<b>School Total:</b>		<b>54</b>	<b>54</b>		<b>\$ 7,136.31</b>	<b>\$6,820.00</b>	<b>1.725</b>

# 2015-2016 Industry Certification Results

## McNair Middle

School	Assessment	# Participants	# Passing	Funding Weights	Potential Funding \$ (students capped at 0.1)	Cost of Assessments & Test Prep Used	Potential Bonus FTE Calculation
MCMS	IC3 Key Applications	9	9	0.025	\$ 930.82	\$3,476.00	0.225
<b>School Total:</b>		<b>9</b>	<b>9</b>		<b>\$ 930.82</b>	<b>\$3,476.00</b>	<b>0.225</b>

# 2015-2016 Industry Certification Results

## SpaceCoast JR

School	Assessment	# Participants	# Passing	Funding Weights	Potential Funding \$ (students capped at 0.1)	Cost of Assessments & Test Prep Used	Potential Bonus FTE Calculation
SCJR	MOS Bundle	5	5	0.100	\$ 2,068.50		0.500
SCJR	IC3 Computing Fundamentals	1	1	0.025	\$ 103.42		0.025
<b>School Total:</b>		<b>6</b>	<b>6</b>		<b>\$ 2,171.92</b>	<b>\$0.00</b>	<b>0.525</b>

\* Cost reflected in high school results

# 2015-2016 Industry Certification Results

## Stone Middle

School	Assessment	# Participants	# Passing	Funding Weights	Potential Funding \$ (students capped at 0.1)	Cost of Assessments & Test Prep Used	Potential Bonus FTE Calculation
SMS	MOS Excel	3	3	0.025	\$ 310.27	\$2,112.00	0.075
SMS	MOS Word	21	21	0.025	\$ 2,171.92		0.525
<b>School Total:</b>		<b>24</b>	<b>24</b>		<b>\$ 2,482.20</b>	<b>\$2,112.00</b>	<b>0.600</b>

# 2015-2016 Industry Certification Results

## Southwest Middle

School	Assessment	# Participants	# Passing	Funding Weights	Potential Funding \$ (students capped at 0.1)	Cost of Assessments & Test Prep Used	Potential Bonus FTE Calculation
SWMS	MOS Bundle	13	13	0.100	\$ 5,378.09	\$5,148.00	1.300
SWMS	MOS Excel	3	3	0.025	\$ 310.27		0.075
SWMS	MOS Word	4	4	0.025	\$ 413.70		0.100
SWMS	IC3 Computing Fundamentals	6	6	0.025	\$ 620.55		0.150
SWMS	IC3 Key Applications	59	59	0.025	\$ 6,102.07		1.475
SWMS	IC3 Living Online	2	2	0.025	\$ 206.85		0.050
<b>School Total:</b>		<b>87</b>	<b>87</b>		<b>\$ 13,031.53</b>	<b>\$5,148.00</b>	<b>3.15</b>



# **Industry Certification Results By Assessment**



**This page intentionally left blank.**

## 2015-2016 Industry Certification HS Results by Assessment

Assessment	School	Program	School Grade	# Students Identified	# Participants	# In Progress	# Passing	# Failing	# Completing Participants	Funding Weights	Potential CAPE Funding \$	% Participants	% Passing	% Failing	% In Progress	% Completing Participants	Cost of Assessments & Test Prep Used	Potential Bonus FTE Calculation
Adobe: Dreamweaver	BHS	Adv Tech App	X	1	1	0	0	1	1	0.2	\$0.00	100%	0%	100%	0%	100%	\$7,165.07	0.0
	EGHS	Dig Media/MM	X	8	8	0	0	8	8	0.2	\$0.00	100%	0%	100%	0%	100%	\$7,957.07	0.0
	SHS	Dig Media/MM	X	1	1	0	1	0	1	0.2	\$827.40	100%	100%	0%	0%	100%	\$7,957.07	0.2
	RHS	Digital Design	X	1	1	0	1	0	1	0.2	\$827.40	100%	100%	0%	0%	100%	\$6,493.08	0.2
	THS	Digital Design	X	1	1	0	1	0	1	0.2	\$0.00	100%	0%	100%	0%	100%	\$9,761.07	0.0
	THS	Digital Design	X	2	2	0	1	1	2	0.2	\$827.40	100%	50%	50%	0%	100%		0.2
	AHS	Web Development	X	2	2	0	1	1	2	0.2	\$0.00	100%	0%	100%	0%	100%		0.0
	GHS	Web Development	X	9	9	0	0	9	9	0.2	\$0.00	100%	0%	100%	0%	100%	\$5,525.08	0.0
	MHS	Web Development	X	8	8	0	7	1	8	0.2	\$5,791.79	100%	88%	13%	0%	100%	\$5,625.07	1.4
	MHS	Web Development	X	39	39	0	38	1	39	0.2	\$31,441.15	100%	97%	3%	0%	100%	\$8,446.09	7.6
	THS	Web Development	X	9	9	0	7	2	9	0.2	\$5,791.79	100%	78%	22%	0%	100%	\$5,361.06	1.4
	EGHS	Dig Media/MM	X	1	1	0	1	0	1	0.2	\$0.00	100%	0%	100%	0%	100%		0.0
	SHS	Dig Media/MM	X	1	1	0	1	0	1	0.2	\$827.40	100%	100%	0%	0%	100%		0.2
	BHS	Digital Design	X	2	2	0	2	0	2	0.2	\$0.00	100%	0%	100%	0%	100%		0.0
	EGHS	Digital Design	X	2	2	0	2	0	2	0.2	\$0.00	100%	0%	100%	0%	100%		0.0
MHS	Digital Design	X	1	1	0	1	0	1	0.2	\$827.40	100%	100%	0%	0%	100%		0.2	
RHS	Digital Design	X	14	14	0	9	5	14	0.2	\$7,446.59	100%	64%	36%	0%	100%		1.8	
THS	Digital Design	X	16	16	0	12	4	16	0.2	\$9,928.79	100%	75%	25%	0%	100%		2.4	
AHS	Web Development	X	4	4	0	3	1	4	0.2	\$2,482.20	100%	75%	25%	0%	100%		0.6	
MHS	Web Development	X	1	1	0	1	0	1	0.2	\$0.00	100%	0%	100%	0%	100%		0.0	
MHS	Web Development	X	8	8	0	6	2	8	0.2	\$4,964.39	100%	75%	25%	0%	100%		1.2	
MHS	Web Development	X	9	9	0	9	0	9	0.2	\$7,446.59	100%	100%	0%	0%	100%		1.8	
BHS	Adv Tech App	X	3	3	0	3	0	3	0.1	\$1,241.10	100%	100%	0%	0%	100%		0.3	
BHS	Comm Tech	X	36	36	0	31	5	36	0.1	\$12,824.68	100%	86%	14%	0%	100%	\$6,009.08	3.1	
PBMS	Comm Tech	X	7	7	1	0	1	1	0.1	\$0.00	100%	0%	100%	0%	100%		0.0	
VHS	Comm Tech	X	72	72	0	58	14	72	0.1	\$23,994.56	100%	81%	19%	0%	100%	\$4,965.07	5.8	
AHS	Dig Media/MM	X	6	6	0	1	5	6	0.1	\$413.70	100%	17%	83%	0%	100%	\$9,233.06	0.1	
EGHS	Dig Media/MM	X	1	1	0	1	0	1	0.1	\$0.00	100%	0%	100%	0%	100%		0.0	
SHS	Dig Media/MM	X	5	5	1	0	1	1	0.1	\$0.00	20%	0%	100%	0%	100%		0.0	
SHS	Dig Media/MM	X	46	46	0	20	26	46	0.1	\$8,273.99	100%	43%	57%	0%	100%		2.0	
AHS	Digital Design	X	6	6	0	3	3	6	0.1	\$1,241.10	100%	50%	50%	0%	100%		0.3	
BHS	Digital Design	X	44	44	0	27	17	44	0.1	\$11,169.88	100%	61%	39%	0%	100%	\$6,097.07	2.7	
GHS	Digital Design	X	2	2	0	2	0	2	0.1	\$0.00	100%	0%	100%	0%	100%		0.0	
EGHS	Digital Design	X	28	28	0	20	8	28	0.1	\$8,273.99	100%	71%	29%	0%	100%		2.0	
EHS	Digital Design	X	3	3	0	3	0	3	0.1	\$1,241.10	100%	100%	0%	0%	100%	\$2,074.45	0.3	
MHS	Digital Design	X	1	1	0	1	0	1	0.1	\$0.00	100%	0%	100%	0%	100%		0.0	
MHS	Digital Design	X	1	1	0	1	0	1	0.1	\$413.70	100%	100%	0%	0%	100%	\$2,953.01	0.1	
MHS	Digital Design	X	22	22	0	22	0	22	0.1	\$9,101.39	100%	100%	0%	0%	100%		2.2	
RHS	Digital Design	X	23	23	0	22	1	23	0.1	\$9,101.39	100%	96%	4%	0%	100%		2.2	
THS	Digital Design	X	23	23	0	22	1	23	0.1	\$9,101.39	100%	96%	4%	0%	100%		2.2	
THS	Digital Design	X	19	19	0	18	1	19	0.1	\$7,446.59	100%	95%	5%	0%	100%		1.8	
VHS	Fashion Design Services	X	16	16	0	2	14	16	0.1	\$827.40	100%	13%	88%	0%	100%		0.2	
MHS	Web Development	X	3	3	0	3	0	3	0.1	\$1,241.10	100%	100%	0%	0%	100%		0.3	
THS	Web Development	X	1	1	0	1	0	1	0.1	\$413.70	100%	100%	0%	0%	100%		0.1	

## 2015-2016 Industry Certification HS Results by Assessment

Assessment	School	Program	School Grade	# Students Identified	# Participants	# In Progress	# Passing	# Failing	# Completing Participants	Funding Weights	Potential CAPE Funding \$	% Participants	% Passing	% Failing	% In Progress	% Completing Participants	Cost of Assessments & Test Prep Used	Potential Bonus FTE Calculation
Adobe: InDesign	BHS	Adv Tech App	X	1	1	0	1	1	1	0.1	\$0.00	100%	0%	100%	0%	100%		0.0
	BHS	Comm Tech	X	25	25	0	18	7	25	0.1	\$7,446.59	100%	72%	28%	0%	100%		1.8
	VHS	Comm Tech	X	49	49	0	46	3	49	0.1	\$19,030.17	100%	94%	6%	0%	100%		4.6
	VHS	Comm Tech	X	11	11	0	9	2	11	0.1	\$3,723.29	100%	82%	18%	0%	100%		0.9
	SHS	Dig Media/MM	X	26	26	0	19	7	26	0.1	\$7,860.29	100%	73%	27%	0%	100%		1.9
	AHS	Digital Design	X	16	16	0	9	7	16	0.1	\$3,723.29	100%	56%	44%	0%	100%		0.9
	BHS	Digital Design	X	19	19	0	16	3	19	0.1	\$6,619.19	100%	84%	16%	0%	100%		1.6
	GHS	Digital Design	X	3	3	0	3	0	3	0.1	\$0.00	100%	0%	100%	0%	100%		0.0
	EGHS	Digital Design	X	14	14	0	10	4	14	0.1	\$4,136.99	100%	71%	29%	0%	100%		1.0
	EHS	Digital Design	X	7	7	0	3	4	7	0.1	\$1,241.10	100%	43%	57%	0%	100%		0.3
	MHS	Digital Design	X	21	21	0	15	6	21	0.1	\$6,205.49	100%	71%	29%	0%	100%		1.5
	MHS	Digital Design	X	27	25	0	25	0	25	0.1	\$10,342.48	93%	100%	0%	0%	100%		2.5
	RHS	Digital Design	X	22	22	0	19	3	22	0.1	\$7,860.29	100%	86%	14%	0%	100%		1.9
	THS	Digital Design	X	32	32	0	29	3	32	0.1	\$11,997.28	100%	91%	9%	0%	100%		2.9
	THS	Digital Design	X	55	55	0	47	8	55	0.1	\$19,443.87	100%	85%	15%	0%	100%		4.7
GBHS	Marketing Management	X	22	22	0	8	14	22	0.1	\$3,309.60	100%	36%	64%	0%	100%		0.8	
SHS	Marketing Management	X	3	3	0	3	0	3	0.1	\$1,241.10	100%	100%	0%	0%	100%		0.3	
VHS	Adv Tech App	X	30	30	0	26	4	30	0.1	\$10,756.18	100%	87%	13%	0%	100%		2.6	
EGHS	ACE ART	X	4	4	0	4	0	4	0.1	\$0.00	100%	0%	100%	0%	100%		0.0	
WSHS	AP STUD ART 2-D	X	2	2	0	1	1	2	0.1	\$413.70	100%	50%	50%	0%	100%		0.1	
BHS	Comm Tech	X	13	13	0	5	8	13	0.1	\$2,068.50	100%	38%	62%	0%	100%		0.5	
VHS	Comm Tech	X	51	51	0	35	16	51	0.1	\$14,479.48	100%	69%	31%	0%	100%		3.5	
AHS	Dig Media/MM	X	108	108	0	72	36	108	0.1	\$29,786.36	100%	67%	33%	0%	100%		7.2	
EGHS	Dig Media/MM	X	58	58	0	15	43	58	0.1	\$6,205.49	100%	26%	74%	0%	100%		1.5	
SHS	Dig Media/MM	X	61	61	0	34	27	61	0.1	\$14,055.78	100%	56%	44%	0%	100%		3.4	
VHS	Dig Media/MM	X	81	80	0	42	39	81	0.1	\$17,375.37	99%	52%	48%	0%	101%		4.2	
WSHS	Dig Art Img 3H	X	1	1	0	1	1	1	0.1	\$0.00	100%	0%	100%	0%	100%		0.0	
AHS	Digital Design	X	2	2	0	1	1	2	0.1	\$413.70	100%	50%	50%	0%	100%		0.1	
BHS	Digital Design	X	16	16	0	14	2	16	0.1	\$5,791.79	100%	88%	13%	0%	100%		1.4	
EGHS	Digital Design	X	9	9	0	5	4	9	0.1	\$2,068.50	100%	56%	44%	0%	100%		0.5	
EHS	Digital Design	X	41	41	0	4	37	41	0.1	\$1,654.80	100%	10%	90%	0%	100%		0.4	
MHS	Digital Design	X	67	67	0	22	45	67	0.1	\$9,101.39	100%	33%	67%	0%	100%		2.2	
MHS	Digital Design	X	1	1	0	1	1	1	0.1	\$0.00	100%	0%	100%	0%	100%		0.0	
RHS	Digital Design	X	8	8	0	8	0	8	0.1	\$3,309.60	100%	100%	0%	0%	100%		0.8	
THS	Digital Design	X	14	14	0	14	0	14	0.1	\$1,241.10	100%	38%	63%	0%	100%		0.3	
THS	Digital Design	X	3	3	0	1	2	3	0.1	\$413.70	100%	33%	67%	0%	100%		1.4	
THS	Digital Design	X	19	19	0	10	9	19	0.1	\$4,136.99	100%	53%	47%	0%	100%		1.0	
WSHS	DIGITAL ART IMG2	X	2	2	0	0	2	2	0.1	\$0.00	100%	0%	100%	0%	100%		0.0	
PBMS	Gaming	X	41	41	0	15	26	41	0.1	\$6,205.49	100%	37%	63%	0%	100%		1.5	
MHS	Web Development	X	5	5	0	3	0	5	0.1	\$1,241.10	100%	100%	0%	0%	100%		0.3	

Adobe: Photoshop

## 2015-2016 Industry Certification HS Results by Assessment

Assessment	School	Program	School Grade	# Students Identified	# Participants	# In Progress	# Passing	# Failing	# Completing Participants	Funding Weights	Potential CAPE Funding \$	% Participants	% Passing	% Failing	% In Progress	% Completing Participants	Cost of Assessments & Test Prep Used	Potential Bonus FTE Calculation	
Adobe: Premiere Pro	VHS	Adv Tech App	X	3	3	0	2	1	3	0.1	\$827.40	100%	67%	33%	0%	100%		0.2	
	VHS	Comm Tech	X	1	1	0	0	1	1	0.1	\$0.00	100%	0%	100%	0%	100%		0.0	
	AHS	Dig Media/MM	X	62	62	0	8	54	62	0.1	\$3,309.60	100%	13%	87%	0%	100%	\$880.00	0.8	
	SHS	Dig Media/MM	X	1	1	0	1	0	1	0.1	\$413.70	100%	100%	0%	0%	100%		0.1	
	AHS	Digital Design	X	1	1	0	0	1	1	0.1	\$0.00	100%	0%	100%	0%	100%		0.0	
	THS	Digital Design	X	1	1	0	0	1	1	0.1	\$0.00	100%	0%	100%	0%	100%		0.0	
	RHS	Criminal Justice	X	16	16	0	8	8	16	0.2	\$6,619.19	100%	50%	50%	0%	100%	\$1,775.00	1.6	
	HHS	Automotive Service Tech	X	1	1	0	0	1	1	0.2	\$0.00	100%	100%	0%	100%	0%	100%	\$73.00	0.0
	RHS	Automotive Service Tech	X	1	1	0	1	0	1	0.2	\$827.40	100%	100%	0%	0%	100%	\$146.00	0.2	
	SHS	Automotive Service Tech	X	1	1	0	1	0	1	0.2	\$827.40	100%	100%	0%	0%	100%	\$146.00	0.2	
Autodesk - Certified User AutoCAD	SHS	Automotive Service Tech	X					0	0	0.2	\$0.00							\$146.00	0.0
	HHS	Drafting	X	16	16	0	8	8	16	0.2	\$6,619.19	100%	50%	50%	0%	100%	\$748.00	1.6	
	RHS	Drafting	X	20	19	0	16	3	19	0.2	\$13,238.38	95%	84%	16%	0%	100%	\$880.00	3.2	
	SHS	Drafting	X	13	13	0	13	0	13	0.2	\$10,756.18	100%	100%	0%	0%	100%	\$572.00	2.6	
	AHS	Engineering Technology	X	10	10	0	1	9	10	0.2	\$827.40	100%	10%	90%	0%	100%		0.2	
	AHS	Technical Design	X	67	67	0	31	36	67	0.2	\$25,649.36	100%	46%	54%	0%	100%	\$3,801.00	6.2	
	BHS	Technical Design	X	2	2	0	0	2	2	0.2	\$0.00	100%	0%	100%	0%	100%	\$2,068.00	0.0	
	CHS	Technical Design	X	15	15	0	10	5	15	0.2	\$8,273.99	100%	67%	33%	0%	100%	\$660.00	2.0	
	EGHS	Technical Design	X	24	24	0	19	5	24	0.2	\$15,720.58	100%	79%	21%	0%	100%	\$1,100.00	3.8	
	PBMS	Technical Design	X	1	1	0	0	1	1	0.2	\$0.00	100%	0%	100%	0%	100%		0.0	
Autodesk - Certified User Inventor	SHS	Technical Design	X	27	26	0	23	3	26	0.2	\$19,030.17	96%	88%	12%	0%	100%	\$1,188.00	4.6	
	SHS	Drafting	X	11	11	0	11	0	11	0.2	\$9,101.39	100%	100%	0%	0%	100%		2.2	
	AHS	Engineering Technology	X	1	1	0	0	1	1	0.2	\$0.00	100%	0%	100%	0%	100%		0.0	
	WHHS	PLTW - ENGINEERING	X	37	38	0	28	9	37	0.2	\$23,167.17	103%	76%	24%	0%	97%	\$1,672.00	5.6	
	AHS	Technical Design	X	23	23	0	13	10	23	0.2	\$10,756.18	100%	57%	43%	0%	100%		2.6	
	BHS	Technical Design	X	17	17	0	17	0	17	0.2	\$14,065.78	100%	100%	0%	0%	100%		3.4	
	PBMS	Technical Design	X	18	18	0	10	8	18	0.2	\$8,273.99	100%	56%	44%	0%	100%	\$880.00	2.0	
	RHS	Drafting	X	7	7	0	7	0	7	0.2	\$5,791.79	100%	100%	0%	0%	100%		1.4	
	SHS	Drafting	X	12	12	0	12	0	12	0.2	\$9,928.79	100%	100%	0%	0%	100%		2.4	
	AHS	Engineering Technology	X	2	2	0	2	0	2	0.2	\$1,654.80	100%	100%	0%	0%	100%		0.4	
Autodesk - Certified User Revit	AHS	Technical Design	X	62	62	0	46	16	62	0.2	\$38,060.34	100%	74%	26%	0%	100%	\$1,960.00	9.2	
	BHS	Technical Design	X	22	22	0	19	3	22	0.2	\$15,720.58	100%	86%	14%	0%	100%	\$1,000.00	3.8	
	BHS	TV Production	X	31	31	0	31	0	31	0.1	\$12,824.68	100%	100%	0%	0%	100%	\$1,000.00	3.1	
	EHS	TV Production	X	33	33	0	33	0	33	0.1	\$13,652.08	100%	100%	0%	0%	100%	\$1,325.00	3.3	
	SHS	TV Production	X	22	22	0	22	0	22	0.1	\$9,101.39	100%	100%	0%	0%	100%	\$1,000.00	2.2	
	THS	TV Production	X	4	4	0	4	0	4	0.1	\$1,654.80	100%	100%	0%	0%	100%	\$1,000.00	0.4	
	VHS	TV Production	X	41	23	0	23	0	23	0.1	\$9,515.09	56%	100%	0%	0%	100%	\$1,325.00	2.3	
	AHS	Patient Care Assisting	X	23	23	0	23	0	23	0.1	\$9,515.09	100%	100%	0%	0%	100%	\$3,220.00	2.3	
	BHS	Patient Care Assisting	X	14	14	0	11	3	14	0.1	\$4,550.69	100%	79%	21%	0%	100%	\$2,100.00	1.1	
	WHHS	Patient Care Assisting	X	11	11	0	11	0	11	0.1	\$4,550.69	100%	100%	0%	0%	100%	\$1,960.00	1.1	
CNA	PBMS	Patient Care Assisting	X	13	13	0	13	0	13	0.1	\$5,378.09	100%	100%	0%	0%	100%	\$1,960.00	1.3	
	RHS	Patient Care Assisting	X	14	14	0	14	0	14	0.1	\$5,791.79	100%	100%	0%	0%	100%	\$2,100.00	1.4	
	THS	Patient Care Assisting	X	35	35	0	32	3	35	0.1	\$13,238.38	100%	91%	9%	0%	100%	\$5,040.00	3.2	
	HHS	Interior Design	X	15	15	0	15	0	15	0.2	\$12,410.98	100%	100%	0%	0%	100%	\$675.00	3.0	
	VHS	Interior Design	X	17	17	0	12	5	17	0.2	\$9,928.79	100%	71%	29%	0%	100%	\$1,135.00	2.4	

## 2015-2016 Industry Certification HS Results by Assessment

Assessment	School	Program	School Grade	# Students Identified	# Participants	# In Progress	# Passing	# Failing	# Completing Participants	Funding Weights	Potential CAPE Funding \$	% Participants	% Passing	% Failing	% In Progress	% Completing Participants	Cost of Assessments & Test Prep Used	Potential Bonus FTE Calculation	
CMAA	BHS	Health & Wellness	X	36	36	0	36	0	36	0.1	\$14,893.18	100%	100%	0%	0%	100%	\$5,292.00	3.6	
	GHS	Health & Wellness	X	10	10	0	6	4	10	0.1	\$2,482.20	100%	60%	40%	0%	0%	100%	\$1,470.00	0.6
	EGHS	Health & Wellness	X	13	13	0	13	0	13	0.1	\$5,378.09	100%	100%	0%	0%	100%	\$1,911.00	1.3	
	HHS	Health & Wellness	X	84	84	0	50	34	84	0.1	\$20,684.97	100%	60%	40%	0%	0%	100%	\$13,083.00	5.0
	VHS	Health Science - Dental	X	22	22	0	22	0	22	0.1	\$9,101.39	100%	100%	0%	0%	100%	\$3,528.00	2.2	
	HHS	Medical Admin Specialist	X	42	42	0	36	6	42	0.1	\$14,893.18	100%	86%	14%	0%	0%	100%	\$6,762.00	3.6
	EGHS	Health & Wellness		18	18	0	18	0	18	0	\$0.00	\$0.00	100%	100%	0%	0%	100%		0.0
	AHS	Emergency Medical Responder		13	13	0	13	0	13	0	\$0.00	\$0.00	100%	100%	0%	0%	100%		0.0
	BHS	Health & Wellness		24	24	0	24	0	24	0	\$0.00	\$0.00	100%	100%	0%	0%	100%		0.0
	HHS	Health & Wellness		67	67	0	67	0	67	0	\$0.00	\$0.00	100%	100%	0%	0%	100%		0.0
	PBWS	Health Science		36	36	0	36	0	36	0	\$0.00	\$0.00	100%	100%	0%	0%	100%		0.0
	CPR/AED/BLS for Healthcare Providers	THS	Health Science		62	62	0	62	0	62	0	\$0.00	100%	100%	0%	0%	100%		0.0
VHS		Health Science - Dental		33	33	0	33	0	33	0	\$0.00	100%	100%	0%	0%	100%		0.0	
AHS		Patient Care Assisting		56	56	0	56	0	56	0	\$0.00	100%	100%	0%	0%	100%		0.0	
RHS		Patient Care Assisting		40	40	0	40	0	40	0	\$0.00	100%	100%	0%	0%	100%		0.0	
THS		Patient Care Assisting		35	35	0	35	0	35	0	\$0.00	100%	100%	0%	0%	100%		0.0	
THS		Patient Care Assisting		136	136	0	136	0	136	0	\$0.00	100%	100%	0%	0%	100%		0.0	
AHS		Emergency Medical Responder		13	13	0	5	8	13	0.1	\$2,068.50	100%	38%	62%	0%	0%	100%	\$1,300.00	0.5
MHS		Emergency Medical Responder		17	17	0	11	6	17	0.1	\$4,550.69	100%	65%	35%	0%	0%	100%	\$2,100.00	1.1
SCHS		A/C Refrig & Heat		50	50	0	50	0	50	0	\$0.00	100%	100%	0%	0%	100%	\$1,250.00	0.0	
GHS		Automotive Collision		29	29	0	14	15	29	0.1	\$5,791.79	100%	48%	52%	0%	0%	100%	\$2,558.40	1.4
EGHS		Automotive Service Tech		36	36	0	17	19	36	0.1	\$7,032.89	100%	47%	53%	0%	0%	100%	\$4,143.50	1.7
FLADA		HHS	Automotive Service Tech		42	42	0	36	6	42	0.1	\$14,893.18	100%	86%	14%	0%	0%	100%	\$3,597.75
	MHS	Automotive Service Tech		14	12	0	9	3	12	0.1	\$3,723.29	100%	75%	25%	0%	0%	100%	\$1,599.00	0.9
	RHS	Automotive Service Tech		22	22	0	15	7	22	0.1	\$6,205.49	100%	68%	32%	0%	0%	100%	\$1,998.75	1.5
	MHS	Automotive Service Tech		41	41	0	14	27	41	0.1	\$5,791.79	100%	34%	66%	0%	0%	100%	\$3,677.70	1.4
	SHS	Automotive Service Tech		41	41	0	14	6	20	0.1	\$5,791.79	100%	70%	30%	0%	0%	100%	\$1,998.75	1.4
	THS	Automotive Service Tech		20	20	0	14	6	20	0.1	\$4,136.99	100%	70%	30%	0%	0%	100%	\$1,850.00	1.0
	EGHS	Marine Tech		28	28	0	10	18	28	0.1	\$4,136.99	100%	36%	64%	0%	0%	100%	\$1,678.95	1.0
	GBHS	GIS Technology		2	2	0	2	0	2	0.1	\$827.40	100%	100%	0%	0%	100%	\$1,850.00	0.2	
	SCHS	A/C Refrig & Heat		33	33	0	20	13	33	0.2	\$16,547.98	100%	61%	39%	0%	0%	100%	\$930.00	4.0
	SCHS	A/C Refrig & Heat		28	28	0	21	7	28	0.2	\$17,375.37	100%	75%	25%	0%	0%	100%	\$930.00	4.2
	EGHS	Early Childhood Ed		12	12	0	12	0	12	0	\$0.00	100%	100%	0%	0%	100%		0.0	
	Intro to Childcare Training Certificate	MHS	Early Childhood Ed		13	13	0	13	0	13	0	\$0.00	100%	100%	0%	0%	100%		0.0
PBMS		Early Childhood Ed		7	7	0	7	0	7	0	\$0.00	100%	100%	0%	0%	100%		0.0	
SHS		Early Childhood Ed		7	7	0	7	0	7	0	\$0.00	100%	100%	0%	0%	100%		0.0	
VHS		Early Childhood Ed		2	2	0	2	0	2	0	\$0.00	100%	100%	0%	0%	100%	\$2,022.00	0.0	
GHS		Accounting		11	11	0	11	0	11	0.2	\$9,101.39	100%	100%	0%	0%	100%	\$484.00	2.2	

## 2015-2016 Industry Certification HS Results by Assessment

Assessment	School	Program	School Grade	# Students Identified	# Participants	# In Progress	# Passing	# Failing	# Completing Participants	Funding Weights	Potential CAPE Funding \$	% Participants	% Passing	% Failing	% In Progress	% Completing Participants	Cost of Assessments & Test Prep Used	Potential Bonus FTE Calculation		
MOS Bundle	AHS	Bus Software	X	6	6	0	6	0	6	0.2	\$4,964.39	100%	100%	0%	0%	100%	\$1,540.00	1.2		
	HHS	Bus Software	X	24	24	0	22	2	24	0.2	\$18,202.77	100%	92%	8%	0%	100%	\$4,818.00	4.4		
	HHS	Bus Software	X	42	42	0	39	3	42	0.2	\$32,268.55	100%	93%	7%	0%	100%	\$4,818.00	7.8		
	MHS	Bus Software	X	25	25	7	17	1	18	0.2	\$14,065.78	100%	94%	6%	28%	72%	\$2,816.00	3.4		
	SCHS	Bus Software	X	82	82	44	34	4	38	0.2	\$28,131.56	100%	89%	11%	54%	46%	\$5,016.00	6.8		
	SHS	Bus Software	X	35	35	15	20	9	15	0.2	\$7,446.59	43%	60%	40%	133%	100%		1.8		
	AHS	CCC	X	23	23	10	13	0	13	0.2	\$10,756.18	100%	100%	0%	43%	57%		2.6		
	GHS	CCC	X	6	6	0	5	1	6	0.2	\$4,136.99	100%	83%	17%	0%	100%		1.0		
	GHS	CCC	X	144	144	64	15	65	80	0.2	\$12,410.98	100%	19%	81%	0%	44%	56%	\$11,044.00	3.0	
	EGHS	CCC	X	68	68	58	10	0	10	0.2	\$8,273.99	100%	100%	0%	85%	15%		2.0		
	HHS	CCC	X	149	149	125	22	2	24	0.2	\$18,202.77	100%	92%	8%	84%	16%		4.4		
	MHS	CCC	X	14	14	0	14	0	14	0.2	\$11,583.58	100%	100%	0%	0%	100%		2.8		
	SHS	CCC	X	29	29	20	9	0	9	0.2	\$7,446.59	100%	100%	0%	69%	31%		1.8		
	THS	CCC	X	30	30	0	18	12	30	0.2	\$14,893.18	100%	60%	40%	0%	100%		3.6		
	THS	CCC	X	125	125	28	61	36	97	0.2	\$50,471.33	100%	63%	37%	22%	78%		12.2		
	VHS	CCC	X	71	71	23	48	0	48	0.2	\$39,715.14	100%	100%	0%	32%	68%		9.6		
	AHS	Emerging Tech Business	X	5	5	0	5	0	5	0.2	\$4,136.99	100%	100%	0%	0%	100%		1.0		
	MHS	Finance Academy	X	64	64	22	42	0	42	0.2	\$34,750.75	100%	100%	0%	34%	66%		8.4		
	MHS	Finance Academy	X	28	28	0	27	1	28	0.2	\$2,339.77	100%	96%	4%	0%	100%		5.4		
	MHS	Finance Academy	X	178	178	91	87	0	87	0.2	\$71,983.69	100%	100%	0%	51%	49%		17.4		
	VHS	Finance Academy	X	169	169	127	42	0	42	0.2	\$34,750.75	100%	100%	0%	75%	25%		8.4		
	VHS	Finance Academy	X	5	5	0	5	0	5	0.2	\$4,136.99	100%	100%	0%	0%	100%		1.0		
	MHS	Hosp & Tourism	X	15	15	7	5	3	8	0.2	\$4,136.99	100%	63%	38%	47%	53%		1.0		
	RHS	Hosp & Tourism	X	19	19	19	0	0	0	0.2	\$0.00	100%	0%	0%	100%	0%		\$836.00	0.0	
GBHS	Intl Business	X	87	61	27	31	29	60	0.2	\$25,649.36	70%	52%	48%	44%	98%		\$4,532.00	6.2		
MHS	Marketing Management	X	24	24	7	8	9	17	0.2	\$6,619.19	100%	47%	53%	29%	71%		\$880.00	1.6		
HHS	Tech Support - Client	X	1	1	0	1	0	1	0.2	\$827.40	100%	100%	0%	0%	100%			0.2		
AHS	Bus Software	X	3	3	0	3	0	3	0.2	\$2,482.20	100%	100%	0%	0%	100%			0.6		
SCHS	Bus Software	X	2	2	0	2	0	2	0.2	\$1,654.80	100%	100%	0%	0%	100%			0.4		
VHS	CCC	X	1	1	0	1	0	1	0.2	\$827.40	100%	100%	0%	0%	100%			0.2		
VHS	Finance Academy	X	2	2	0	2	0	2	0.2	\$1,654.80	100%	100%	0%	0%	100%			0.4		
HHS	PC Support	X	1	1	0	1	0	1	0.2	\$827.40	100%	100%	0%	0%	100%			0.2		
HHS	PC Support	X	1	1	0	1	0	1	0.1	\$413.70	100%	100%	0%	0%	100%			0.1		
HHS	Intro to Info Tech	X	7	7	0	4	3	7	0.1	\$1,654.80	100%	57%	43%	0%	100%			0.4		
HHS	Intro to Info Tech	X	4	4	0	1	3	4	0.1	\$413.70	100%	25%	75%	0%	100%			0.1		
GHS	PC Support	X	6	6	0	2	4	6	0.1	\$827.40	100%	33%	67%	0%	100%			0.2		
THS	PC Support	X	21	21	0	10	11	21	0.1	\$4,136.99	100%	48%	52%	0%	100%			1.0		
HHS	Tech Support - Client	X	18	18	0	2	16	18	0.1	\$827.40	100%	11%	89%	0%	100%			0.2		
SCHS	A/C Refrig & Heat	X	4	4	0	4	0	4	0.2	\$3,309.60	100%	100%	0%	0%	100%			0.8		
MHS	Automotive Service Tech	X	1	1	0	1	0	1	0.2	\$827.40	100%	100%	0%	0%	100%			0.2		
SCHS	A/C Refrig & Heat	X	24	24	0	24	0	24	0.2	\$19,857.57	100%	100%	0%	0%	100%			4.8		
MOS Master	NCCER	A/C Refrig & Heat	X	24	24	0	24	0	24	0.2	\$3,069.85	100%	100%	0%	0%	100%				
	MTA Database Admin Fundamentals	HHS	PC Support	X	1	1	0	1	0	1	0.1	\$413.70	100%	100%	0%	0%	100%			0.1
		HHS	PC Support	X	1	1	0	1	0	1	0.1	\$413.70	100%	100%	0%	0%	100%			0.1
		HHS	Intro to Info Tech	X	7	7	0	4	3	7	0.1	\$1,654.80	100%	57%	43%	0%	100%			0.4
		HHS	Intro to Info Tech	X	4	4	0	1	3	4	0.1	\$413.70	100%	25%	75%	0%	100%			0.1
		GHS	PC Support	X	6	6	0	2	4	6	0.1	\$827.40	100%	33%	67%	0%	100%			0.2
		THS	PC Support	X	21	21	0	10	11	21	0.1	\$4,136.99	100%	48%	52%	0%	100%			1.0
		HHS	Tech Support - Client	X	18	18	0	2	16	18	0.1	\$827.40	100%	11%	89%	0%	100%			0.2
		SCHS	A/C Refrig & Heat	X	4	4	0	4	0	4	0.2	\$3,309.60	100%	100%	0%	0%	100%			0.8
		MHS	Automotive Service Tech	X	1	1	0	1	0	1	0.2	\$827.40	100%	100%	0%	0%	100%			0.2
SCHS		A/C Refrig & Heat	X	24	24	0	24	0	24	0.2	\$19,857.57	100%	100%	0%	0%	100%			4.8	

## 2015-2016 Industry Certification HS Results by Assessment

Assessment	School	Program	School Grade	# Students Identified	# Participants	# In Progress	# Passing	# Failing	# Completing Participants	Funding Weights	Potential CAPE Funding \$	% Participants	% Passing	% Failing	% In Progress	% Completing Participants	Cost of Assessments & Test Prep Used	Potential Bonus FTE Calculation
NOCTI - Apparel & Text Prod & Mer	CBHS	Fashion Design Services		10	10	0	7	3	10	0	\$0.00	100%	70%	30%	0%	100%	\$332.00	0.0
	MHS	Fashion Design Services		9	9	0	5	4	9	0.0	\$0.00	100%	56%	44%	0%	100%	\$288.00	0.0
	PBMS	Fashion Design Services		7	7	0	6	1	7	0	\$0.00	100%	86%	14%	0%	100%	\$276.00	0.0
	RHS	Fashion Design Services		10	10	0	10	0	10	0	\$0.00	100%	100%	0%	0%	100%	\$340.00	0.0
	SHS	Fashion Design Services		5	5	0	5	0	5	0	\$0.00	100%	100%	0%	0%	100%	\$421.00	0.0
	THS	Fashion Design Services		13	13	0	10	3	13	0	\$0.00	100%	77%	23%	0%	100%	\$356.00	0.0
	PBMS	Criminal Justice		17	17	0	17	0	17	0	\$0.00	100%	100%	0%	0%	100%	\$340.00	0.0
	RHS	Criminal Justice		4	4	0	4	0	4	0	\$0.00	100%	100%	0%	0%	100%	\$80.00	0.0
	AHS	Construction Tech		25	25	0	25	0	25	0	\$0.00	100%	100%	0%	0%	100%	\$255.00	0.0
	SCHS	Teacher Assisting		19	19	0	15	4	19	0	\$0.00	100%	79%	21%	0%	100%	\$1,045.00	0.0
ProStart Certificate of Achievement	BHS	Culinary Arts		9	9	0	9	0	9	0.2	\$7,446.59	100%	100%	0%	0%	100%	\$79.00	1.8
	BHS	Culinary Arts		10	10	0	10	0	10	0.2	\$8,273.99	100%	100%	0%	0%	100%	\$79.00	2.0
	BHS	Culinary Arts		99	99	0	99	0	99	0	\$0.00	100%	100%	0%	0%	100%	\$868.60	0.0
	BHS	Culinary Arts		106	106	0	106	0	106	0	\$0.00	100%	100%	0%	0%	100%	\$916.60	0.0
	CHS	Culinary Arts		68	68	0	68	0	68	0	\$0.00	100%	100%	0%	0%	100%	\$836.60	0.0
	MHS	Culinary Arts							0	0.0	\$0.00	100%	100%	0%	0%	100%	\$596.60	0.0
	MHS	Culinary Arts		99	99	0	99	0	99	0.0	\$0.00	100%	100%	0%	0%	100%	\$876.60	0.0
	PBMS	Culinary Arts		39	39	0	39	0	39	0	\$0.00	100%	100%	0%	0%	100%	\$516.60	0.0
	THS	Culinary Arts		56	56	0	56	0	56	0	\$0.00	100%	100%	0%	0%	100%	\$516.60	0.0
	BHS	Culinary Arts		30	30	0	16	14	30	0.2	\$13,238.38	100%	53%	47%	0%	100%	\$2,193.92	3.2
SafeStaff Food Handler Certification	BHS	Culinary Arts		27	27	0	27	0	27	0.2	\$2,339.77	100%	100%	0%	0%	100%	\$3,232.16	5.4
	CHS	Culinary Arts		22	22	0	4	18	22	0.2	\$3,309.60	100%	18%	82%	0%	100%	\$4,354.70	0.8
	MHS	Culinary Arts		36	36	0	32	4	36	0.2	\$2,676.76	100%	89%	11%	0%	100%	\$4,791.65	6.4
	PBMS	Culinary Arts		27	27	0	17	10	27	0.2	\$14,065.78	100%	63%	37%	0%	100%	\$4,882.33	3.4
	THS	Culinary Arts		39	39	0	15	24	39	0.2	\$12,410.98	100%	38%	62%	0%	100%	\$5,378.36	3.0
	AHS	Food Science		67	67	0	39	28	67	0.2	\$32,268.55	100%	58%	42%	0%	100%	\$5,378.36	7.8
	HHS	Food Science		60	60	0	15	45	60	0.2	\$12,410.98	100%	25%	75%	0%	100%	\$6,343.11	3.0
	MHS	Food Science		22	22	0	19	3	22	0.2	\$15,720.58	100%	86%	14%	0%	100%	\$2,481.20	3.8
	MHS	Food Science		6	6	0	6	0	6	0.2	\$0.00	100%	0%	100%	0%	100%	\$952.99	0.0
	SHS	Food Science		37	37	0	9	28	37	0.2	\$7,446.59	100%	24%	76%	0%	100%	\$2,707.03	1.8
SensSafe Manager	VHS	Food Science							0	0.2	\$0.00	100%	100%	0%	0%	100%	\$2,144.04	0.0
	MHS	Hosp & Tourism		8	7	0	7	0	7	0.2	\$0.00	88%	0%	100%	0%	100%	\$284.84	0.0
	HHS	Hosp & Tourism		22	21	0	4	17	21	0.2	\$3,309.60	95%	19%	81%	0%	100%	\$756.49	0.0
	RHS	Automation & Production			0	0	0	0	0	0.2	\$0.00						\$2,666.00	0.8
	AHS	Engineering Technology		19	19	0	1	18	19	0.2	\$8,271.40	100%	5%	95%	0%	100%	\$1,100.00	0.2
	BHS	Engineering Technology		26	26	0	9	17	26	0.2	\$7,446.59	100%	35%	65%	0%	100%	\$2,666.00	1.8
	MHS	Engineering Technology		36	34	0	30	4	34	0.2	\$7,446.59	94%	88%	12%	0%	100%	\$2,666.00	6.0
	PBMS	Engineering Technology		14	14	0	7	6	13	0.2	\$5,791.79	100%	54%	46%	0%	93%	\$4,044.00	1.4
	SCHS	Engineering Technology		15	15	0	12	3	15	0.2	\$9,928.79	100%	80%	20%	0%	100%	\$4,152.00	2.4
	PBMS	Technical Design		2	2	0	1	1	2	0.2	\$8,271.40	100%	50%	50%	0%	100%	\$4,678.00	0.2
Solidworks	EGHS	Early Childhood Ed		11	11	0	11	0	11	0	\$0.00	100%	100%	0%	0%	100%	\$460.00	0.0
	MHS	Early Childhood Ed		4	4	0	4	0	4	0	\$0.00	100%	100%	0%	0%	100%	\$240.00	0.0
	PBMS	Early Childhood Ed		1	1	0	1	0	1	0	\$0.00	100%	100%	0%	0%	100%	\$320.00	0.0
	SHS	Early Childhood Ed		7	7	0	7	0	7	0	\$0.00	100%	100%	0%	0%	100%	\$300.00	0.0
	VHS	Early Childhood Ed		1	1	0	1	0	1	0	\$0.00	100%	100%	0%	0%	100%		0.0
Staff Credential																		



## 2015-2016 Industry Certification HS Results by Assessment

Assessment	School	Program	School Grade	# Students Identified	# Participants	# In Progress	# Passing	# Failing	# Completing Participants	Funding Weights	Potential CAPE Funding \$	% Participants	% Passing	% Failing	% In Progress	% Completing Participants	Cost of Assessments & Test Prep Used	Potential Bonus FTE Calculation
Waste Water Treatment Plant Operator C	HHS	Environmental Water	X	1	1	0	0	1	1	0.1	\$0.00	100%	0%	100%	0%	100%	\$2,200.00	0.0
Water Treatment Plant Operator C	HHS	Environmental Water	X	21	20	0	9	11	20	0.1	\$3,723.29	95%	45%	55%	0%	100%	\$366,515.06	419.00
Grand Total											\$1,733,400.47						\$366,515.06	419.00
Return on Investment											\$1,366,885.41							

**This page intentionally left blank.**

# Industry Certification By Program



**This page intentionally left blank.**

2015-2016 Industry Certification  
HS Results by Program

Program	School	Assessment	School Grade	# Students Identified	# Participants	# In Progress	# Passing	# Failing	# Completing	Funding Weights	Potential CAPE Funding \$	% Participants	% Passing	% Failing	% In Progress	% Completing	Cost of Assessments & Test Prep Used	Potential Bonus FTE Calculation
A/C Refrig & Heat	SCHS	EPA		50	50	0	50	0	50	0	\$ -	100%	100%	0%	0%	100%	\$1,250.00	0.0
	SCHS	HVAC Excellence - A/C	X	33	33	0	20	13	33	0.2	\$ 16,547.98	100%	61%	39%	0%	100%	\$930.00	4.0
	SCHS	HVAC Excellence - Electrical	X	28	28	0	21	7	28	0.2	\$ 17,375.37	100%	75%	25%	0%	100%		4.2
	SCHS	NATE	X	4	4	0	4	0	4	0.2	\$ 3,309.60	100%	100%	0%	0%	100%	\$3,200.00	0.8
	SCHS	NCCER	X	24	24	0	24	0	24	0.2	\$ 19,857.57	100%	100%	0%	0%	100%	\$3,069.85	4.8
Accounting	CHS	Intuit: Quick Books	X	11	11	0	11	0	11	0.2	\$ 9,101.39	100%	100%	0%	0%	100%	\$484.00	2.2
Adv Tech App	BHS	Adobe: Dreamweaver	X	1	1	0	0	1	1	0.2	\$ -	100%	0%	100%	0%	100%		0.0
	BHS	Adobe: Illustrator	X	3	3	0	3	0	3	0.1	\$ 1,241.10	100%	100%	0%	0%	100%		0.3
	BHS	Adobe: InDesign	X	1	1	0	0	1	1	0.1	\$ -	100%	0%	100%	0%	100%		0.0
	VHS	Adobe: Photoshop	X	30	30	0	26	4	30	0.1	\$ 10,756.18	100%	87%	13%	0%	100%	\$12,225.07	2.6
	VHS	Adobe: Premiere Pro	X	3	3	0	2	1	3	0.1	\$ 827.40	100%	67%	33%	0%	100%		0.2
AICE Art	EGHS	Adobe: Photoshop	X	4	4	0	0	4	4	0.1	\$ -	100%	0%	100%	0%	100%	\$176.00	0.0
AP STUD ART 2-D	WSHS	Adobe: Photoshop	X	2	2	0	1	1	2	0.1	\$ 413.70	100%	50%	50%	0%	100%	\$264.00	0.1
Automation & Production	HHS	Solidworks	X		0	0	0	0	0	0.2	\$ -						\$2,666.00	0.0
Automotive Collision	CHS	FLADA	X	29	29	0	14	15	29	0.1	\$ 5,791.79	100%	48%	52%	0%	100%	\$2,558.40	1.4
Automotive Service Tech	HHS	ASE MLR G-1	X	1	1	0	0	1	1	0.2	\$ -	100%	0%	100%	0%	100%	\$73.00	0.0
	RHS	ASE MLR G-1	X	1	1	0	1	0	1	0.2	\$ 827.40	100%	100%	0%	0%	100%	\$146.00	0.2
	SHS	ASE MLR G-1	X	1	1	0	1	0	1	0.2	\$ 827.40	100%	100%	0%	0%	100%	\$146.00	0.2
	SHS	ASE MLR G-1	X						0	0.2	\$ -						\$146.00	0.0
	EGHS	FLADA	X	36	36	0	17	19	36	0.1	\$ 7,032.89	100%	47%	53%	0%	100%	\$4,143.50	1.7
	HHS	FLADA	X	42	42	0	36	6	42	0.1	\$ 14,893.18	100%	86%	14%	0%	100%	\$3,597.75	3.6
	MIHS	FLADA	X	14	12	0	9	3	12	0.1	\$ 3,723.29	86%	75%	25%	0%	100%	\$1,599.00	0.9
	RHS	FLADA	X	22	22	0	15	7	22	0.1	\$ 6,205.49	100%	68%	32%	0%	100%	\$1,998.75	1.5
	SHS	FLADA	X	41	41	0	14	27	41	0.1	\$ 5,791.79	100%	34%	66%	0%	100%	\$3,677.70	1.4
	THS	FLADA	X	20	20	0	14	6	20	0.1	\$ 5,791.79	100%	70%	30%	0%	100%	\$1,998.75	1.4
MIHS	NATE	X	1	1	0	1	0	1	0.2	\$ 827.40	100%	100%	0%	0%	100%		0.2	
Bus Software	AHS	MOS Bundle	X	6	6	0	6	0	6	0.2	\$ 4,964.39	100%	100%	0%	0%	100%	\$1,540.00	1.2
	HHS	MOS Bundle	X	24	24	0	22	2	24	0.2	\$ 18,202.77	100%	92%	8%	0%	100%	\$4,818.00	4.4
	HHS	MOS Bundle	X	42	42	0	39	3	42	0.2	\$ 32,268.55	100%	93%	7%	0%	100%	\$4,818.00	7.8
	MIHS	MOS Bundle	X	25	25	7	17	1	18	0.2	\$ 14,065.78	100%	94%	6%	28%	72%	\$2,816.00	3.4
	SCHS	MOS Bundle	X	82	82	44	34	4	38	0.2	\$ 28,131.56	100%	89%	11%	54%	46%	\$5,016.00	6.8
	SHS	MOS Bundle	X	35	15	20	9	6	15	0.2	\$ 7,446.59	43%	60%	40%	133%	100%		1.8
	AHS	MOS Master	X	3	3	0	3	0	3	0.2	\$ 2,482.20	100%	100%	0%	0%	100%		0.6
	SCHS	MOS Master	X	2	2	0	2	0	2	0.2	\$ 1,654.80	100%	100%	0%	0%	100%		0.4

## 2015-2016 Industry Certification HS Results by Program

Program	School	Assessment	School Grade	# Students Identified	# Participants	# In Progress	# Passing	# Failing	# Completing Participants	Funding Weights	Potential CAPE Funding \$	% Participants	% Passing	% Failing	% In Progress	% Completing Participants	Cost of Assessments & Test Prep Used	Potential Bonus FTE Calculation
CCC	AHS	MOS Bundle	X	23	23	10	13	0	13	0.2	\$ 10,756.18	100%	100%	0%	43%	57%		2.6
	CHS	MOS Bundle	X	6	6	0	5	1	6	0.2	\$ 4,136.99	100%	83%	17%	0%	100%		1.0
	CHS	MOS Bundle	X	144	144	64	15	65	80	0.2	\$ 12,410.98	100%	19%	81%	44%	56%	\$11,044.0	3.0
	EGHS	MOS Bundle	X	68	68	58	10	0	10	0.2	\$ 8,273.99	100%	100%	0%	85%	15%	\$3,205.45	2.0
	HHS	MOS Bundle	X	149	149	125	22	2	24	0.2	\$ 18,202.77	100%	92%	8%	84%	16%		4.4
	MHS	MOS Bundle	X	14	14	0	14	0	14	0.2	\$ 11,583.58	100%	100%	0%	0%	100%		2.8
	SHS	MOS Bundle	X	29	29	20	9	0	9	0.2	\$ 7,446.59	100%	100%	0%	69%	31%	\$2,112.00	1.8
	THS	MOS Bundle	X	30	30	0	18	12	30	0.2	\$ 14,893.18	100%	60%	40%	0%	100%	\$3,916.00	3.6
	THS	MOS Bundle	X	125	125	28	61	36	97	0.2	\$ 50,471.33	100%	63%	37%	22%	78%	\$3,916.00	12.2
	VHS	MOS Bundle	X	71	71	23	48	0	48	0.2	\$ 39,715.14	100%	100%	0%	32%	68%		9.6
	VHS	MOS Master	X	1	1	0	1	0	1	0.2	\$ 827.40	100%	100%	0%	0%	100%		0.2
	BHS	Adobe:Illustrator	X	36	36	0	31	5	36	0.1	\$ 12,824.68	100%	86%	14%	0%	100%	\$6,009.08	3.1
PBMS	Adobe:Illustrator	X	7	1	0	0	1	1	0.1	\$ -	14%	0%	100%	0%	100%	\$6,009.07	0.0	
VHS	Adobe:Illustrator	X	72	72	0	58	14	72	0.1	\$ 23,994.56	100%	81%	19%	0%	100%	\$4,965.07	5.8	
VHS	Adobe:InDesign	X	25	25	0	18	7	25	0.1	\$ 7,446.59	100%	72%	28%	0%	100%		1.8	
VHS	Adobe:InDesign	X	49	49	0	46	3	49	0.1	\$ 19,030.17	100%	94%	6%	0%	100%		4.6	
VHS	Adobe:InDesign	X	11	11	0	9	2	11	0.1	\$ 3,723.29	100%	82%	18%	0%	100%		0.9	
BHS	Adobe:photoshop	X	13	13	0	5	8	13	0.1	\$ 2,068.50	100%	38%	62%	0%	100%		0.5	
VHS	Adobe:Photoshop	X	51	51	0	35	16	51	0.1	\$ 14,479.48	100%	69%	31%	0%	100%		3.5	
VHS	Adobe:Premiere Pro	X	1	1	0	0	1	1	0.1	\$ -	100%	0%	100%	0%	100%		0.0	
AHS	OSHA-10		X	25	25	0	25	0	25	0	\$ -	100%	100%	0%	0%	100%	\$255.00	0.0
RHS	ALP		X	16	16	0	8	8	16	0.2	\$ 6,619.19	100%	50%	50%	0%	100%	\$1,775.00	1.6
PBMS	NOCTI - Criminal Justice		X	17	17	0	17	0	17	0	\$ -	100%	100%	0%	0%	100%	\$340.00	0.0
RHS	NOCTI - Criminal Justice			4	4	0	4	0	4	0	\$ -	100%	100%	0%	0%	100%	\$80.00	0.0
BHS	ProStart Certificate of Achievement		X	9	9	0	9	0	9	0.2	\$ 7,446.59	100%	100%	0%	0%	100%	\$779.00	1.8
BHS	ProStart Certificate of Achievement		X	10	10	0	10	0	10	0.2	\$ 8,273.99	100%	100%	0%	0%	100%	\$779.00	2.0
BHS	Safestaff Food Handler Certification		X	99	99	0	99	0	99	0	\$ -	100%	100%	0%	0%	100%	\$868.60	0.0
BHS	Safestaff Food Handler Certification		X	106	106	0	106	0	106	0	\$ -	100%	100%	0%	0%	100%	\$916.60	0.0
CHS	Safestaff Food Handler Certification		X	68	68	0	68	0	68	0	\$ -	100%	100%	0%	0%	100%	\$836.60	0.0
MHS	Safestaff Food Handler Certification								0	0.0	\$ -	100%	100%	0%	0%	100%	\$596.60	0.0
MHS	Safestaff Food Handler Certification		X	99	99	0	99	0	99	0.0	\$ -	100%	100%	0%	0%	100%	\$876.60	0.0
PBMS	Safestaff Food Handler Certification		X	39	39	0	39	0	39	0	\$ -	100%	100%	0%	0%	100%		0.0
THS	Safestaff Food Handler Certification		X	56	56	0	56	0	56	0	\$ -	100%	100%	0%	0%	100%	\$516.60	0.0
BHS	ServSafe Manager		X	30	30	0	16	14	30	0.2	\$ 13,238.38	100%	53%	47%	0%	100%	\$2,199.92	3.2
CHS	ServSafe Manager		X	27	27	0	27	0	27	0.2	\$ 22,339.77	100%	100%	0%	0%	100%	\$3,232.16	5.4
BHS	ServSafe Manager		X	22	22	0	4	18	22	0.2	\$ 3,309.60	100%	18%	82%	0%	100%	\$4,354.70	0.8
CHS	ServSafe Manager		X	36	36	0	32	4	36	0.2	\$ 26,476.76	100%	89%	11%	0%	100%	\$4,791.65	6.4
MHS	ServSafe Manager		X	27	27	0	17	10	27	0.2	\$ 14,065.78	100%	63%	37%	0%	100%		3.4
PBMS	ServSafe Manager		X	39	39	0	15	24	39	0.2	\$ 12,410.98	100%	38%	62%	0%	100%	\$4,882.33	3.0
THS	ServSafe Manager		X															

## 2015-2016 Industry Certification HS Results by Program

Program	School	Assessment	School Grade	# Students Identified	# Participants	# In Progress	# Passing	# Failing	# Completing Participants	Funding Weights	Potential CAPE Funding \$	% Participants	% Passing	% Failing	% In Progress	% Completing Participants	Cost of Assessments & Test Prep Used	Potential Bonus FTE Calculation
Dig Media/MM	EGHS	Adobe: Dreamweaver	X	8	8	0	0	8	8	0.2	\$ -	100%	0%	100%	0%	100%	\$7,165.07	0.0
	SHS	Adobe: Dreamweaver	X	1	1	0	1	0	1	0.2	\$ 827.40	100%	100%	0%	0%	100%	\$7,957.07	0.2
	EGHS	Adobe: Flash	X	1	1	0	0	1	1	0.2	\$ -	100%	0%	100%	0%	100%		0.0
	SHS	Adobe: Flash	X	1	1	0	1	0	1	0.2	\$ 827.40	100%	100%	0%	0%	100%		0.2
	AHS	Adobe: Illustrator	X	6	6	0	1	5	6	0.1	\$ 413.70	100%	17%	83%	0%	100%	\$9,233.06	0.1
	EGHS	Adobe: Illustrator	X	1	1	0	0	1	1	0.1	\$ -	100%	0%	100%	0%	100%		0.0
	SHS	Adobe: Illustrator	X	5	1	0	0	1	1	0.1	\$ -	20%	0%	100%	0%	100%		0.0
	SHS	Adobe: Illustrator	X	46	46	0	20	26	46	0.1	\$ 8,273.99	100%	43%	57%	0%	100%		2.0
	SHS	Adobe: InDesign	X	26	26	0	19	7	26	0.1	\$ 7,860.29	100%	73%	27%	0%	100%		1.9
	AHS	Adobe: Photoshop	X	108	108	0	72	36	108	0.1	\$ 29,786.36	100%	67%	33%	0%	100%		7.2
EGHS	Adobe: Photoshop	X	58	58	0	15	43	58	0.1	\$ 6,205.49	100%	26%	74%	0%	100%		1.5	
SHS	Adobe: Photoshop	X	61	61	0	34	27	61	0.1	\$ 14,065.78	100%	56%	44%	0%	100%		3.4	
VHS	Adobe: Photoshop	X	81	80	0	42	39	81	0.1	\$ 17,375.37	99%	52%	48%	0%	101%		4.2	
AHS	Adobe: Premiere Pro	X	62	62	0	8	54	62	0.1	\$ 3,309.60	100%	13%	87%	0%	100%		0.8	
SHS	Adobe: Premiere Pro	X	1	1	0	1	0	1	0.1	\$ 413.70	100%	100%	0%	0%	100%		0.1	
Digi Art/img 3H	WSHS	Adobe: Photoshop	X	1	1	0	0	1	1	0.1	\$ -	100%	0%	100%	0%	100%		0.0

## 2015-2016 Industry Certification HS Results by Program

Program	School	Assessment	School Grade	# Students Identified	# Participants	# In Progress	# Passing	# Failing	# Completing Participants	Funding Weights	Potential CAPE Funding \$	% Participants	% Passing	% Failing	% In Progress	% Completing Participants	Cost of Assessments & Test Prep Used	Potential Bonus FTE Calculation
Digital Design	RHS	Adobe: Dreamweaver	X	1	1	0	1	0	1	0.2	\$ 827.40	100%	100%	0%	0%	100%	\$6,493.08	0.2
	THS	Adobe: Dreamweaver	X	1	1	0	1	0	1	0.2	\$ -	100%	0%	100%	0%	100%	\$9,761.07	0.0
	THS	Adobe: Dreamweaver	X	2	2	0	1	1	2	0.2	\$ 827.40	100%	50%	50%	0%	100%		0.2
	BHS	Adobe: Flash	X	2	2	0	2	2	2	0.2	\$ -	100%	0%	100%	0%	100%		0.0
	EGHS	Adobe: Flash	X	2	2	0	2	2	2	0.2	\$ -	100%	0%	100%	0%	100%		0.0
	MHS	Adobe: Flash	X	1	1	0	1	0	1	0.2	\$ 827.40	100%	100%	0%	0%	100%		0.2
	RHS	Adobe: Flash	X	14	14	0	9	5	14	0.2	\$ 7,446.59	100%	64%	36%	0%	100%		1.8
	THS	Adobe: Flash	X	16	16	0	12	4	16	0.2	\$ 9,928.79	100%	75%	25%	0%	100%		2.4
	THS	Adobe: Flash	X	4	4	0	3	1	4	0.2	\$ 2,482.20	100%	75%	25%	0%	100%		0.6
	AHS	Adobe: Flash	X	6	6	0	3	3	6	0.1	\$ 1,241.10	100%	50%	50%	0%	100%	\$6,097.07	0.3
	BHS	Adobe: Illustrator	X	44	44	0	27	17	44	0.1	\$ 11,169.88	100%	61%	39%	0%	100%		2.7
	CHS	Adobe: Illustrator	X	2	2	0	2	2	2	0.1	\$ -	100%	0%	100%	0%	100%		0.0
	EGHS	Adobe: Illustrator	X	28	28	0	20	8	28	0.1	\$ 8,273.99	100%	71%	29%	0%	100%	\$2,074.45	2.0
	EHS	Adobe: Illustrator	X	3	3	0	3	0	3	0.1	\$ 1,241.10	100%	100%	0%	0%	100%		0.3
	MHS	Adobe: Illustrator	X	1	1	0	1	0	1	0.1	\$ -	100%	0%	100%	0%	100%		0.0
	MHS	Adobe: Illustrator	X	1	1	0	1	0	1	0.1	\$ 413.70	100%	100%	0%	0%	100%	\$2,953.01	0.1
	MHS	Adobe: Illustrator	X	22	22	0	22	0	22	0.1	\$ 9,101.39	100%	100%	0%	0%	100%		2.2
	RHS	Adobe: Illustrator	X	23	23	0	22	1	23	0.1	\$ 9,101.39	100%	96%	4%	0%	100%		2.2
	THS	Adobe: Illustrator	X	23	23	0	22	1	23	0.1	\$ 9,101.39	100%	96%	4%	0%	100%		2.2
	THS	Adobe: Illustrator	X	19	19	0	18	1	19	0.1	\$ 7,446.59	100%	95%	5%	0%	100%		1.8
	AHS	Adobe: InDesign	X	16	16	0	9	7	16	0.1	\$ 3,723.29	100%	56%	44%	0%	100%		0.9
	BHS	Adobe: InDesign	X	19	19	0	16	3	19	0.1	\$ 6,619.19	100%	84%	16%	0%	100%		1.6
	CHS	Adobe: InDesign	X	3	3	0	3	0	3	0.1	\$ -	100%	0%	100%	0%	100%	\$325.00	0.0
	EGHS	Adobe: InDesign	X	14	14	0	10	4	14	0.1	\$ 4,136.99	100%	71%	29%	0%	100%		1.0
	EHS	Adobe: InDesign	X	7	7	0	3	4	7	0.1	\$ 1,241.10	100%	43%	57%	0%	100%		0.3
	MHS	Adobe: InDesign	X	21	21	0	15	6	21	0.1	\$ 6,205.49	100%	71%	29%	0%	100%		1.5
MHS	Adobe: InDesign	X	27	25	0	25	0	25	0.1	\$ 10,342.48	93%	100%	0%	0%	100%		2.5	
MHS	Adobe: InDesign	X	22	22	0	19	3	22	0.1	\$ 7,860.29	100%	86%	14%	0%	100%		1.9	
THS	Adobe: InDesign	X	32	32	0	29	3	32	0.1	\$ 11,997.28	100%	91%	9%	0%	100%		2.9	
THS	Adobe: InDesign	X	55	55	0	47	8	55	0.1	\$ 19,443.87	100%	85%	15%	0%	100%		4.7	
AHS	Adobe: Photoshop	X	2	2	0	1	1	2	0.1	\$ 413.70	100%	50%	50%	0%	100%		0.1	
BHS	Adobe: Photoshop	X	16	16	0	14	2	16	0.1	\$ 5,791.79	100%	88%	13%	0%	100%		1.4	
EGHS	Adobe: Photoshop	X	9	9	0	5	4	9	0.1	\$ 2,068.50	100%	56%	44%	0%	100%		0.5	
EHS	Adobe: Photoshop	X	41	41	0	4	37	41	0.1	\$ 1,654.80	100%	10%	90%	0%	100%		0.4	
MHS	Adobe: Photoshop	X	67	67	0	22	45	67	0.1	\$ 9,101.39	100%	33%	67%	0%	100%	\$4,640.07	2.2	
MHS	Adobe: Photoshop	X	1	1	0	1	1	1	0.1	\$ -	100%	0%	100%	0%	100%		0.0	
MHS	Adobe: Photoshop	X	8	8	0	8	0	8	0.1	\$ 3,309.60	100%	100%	0%	0%	100%	\$6,009.08	0.8	
RHS	Adobe: Photoshop	X	8	8	0	3	5	8	0.1	\$ 1,241.10	100%	38%	63%	0%	100%		0.3	
THS	Adobe: Photoshop	X	14	14	0	14	0	14	0.1	\$ 5,791.79	100%	100%	0%	0%	100%		1.4	
THS	Adobe: Photoshop	X	3	3	0	1	2	3	0.1	\$ 413.70	100%	33%	67%	0%	100%		0.1	
THS	Adobe: Photoshop	X	19	19	0	10	9	19	0.1	\$ 4,136.99	100%	53%	47%	0%	100%	\$968.00	1.0	
AHS	Adobe: Premiere Pro	X	1	1	0	0	1	1	0.1	\$ -	100%	0%	100%	0%	100%		0.0	
THS	Adobe: Premiere Pro	X	1	1	0	0	1	1	0.1	\$ -	100%	0%	100%	0%	100%		0.0	
DIGITAL ART IMG2	WSHS	Adobe: Photoshop	X	2	2	0	2	2	0.1	\$ -	100%	0%	100%	0%	100%		0.0	



# 2015-2016 Industry Certification

## HS Results by Program

Program	School	Assessment	School Grade	# Students Identified	# Participants	# In Progress	# Passing	# Failing	# Completing	Funding Weights	Potential CAPE Funding \$	% Participants	% Passing	% Failing	% In Progress	% Completing	Cost of Assessments & Test Prep Used	Potential Bonus FTE Calculation
Drafting	HHS	Autodesk - Certified User AutoCAD	X	16	16	0	8	8	16	0.2	\$ 6,619.19	100%	50%	50%	0%	100%	\$748.00	1.6
	RHS	Autodesk - Certified User AutoCAD	X	20	19	0	16	3	19	0.2	\$ 13,238.38	95%	84%	16%	0%	100%	\$880.00	3.2
	SCHS	Autodesk - Certified User AutoCAD	X	13	13	0	13	0	13	0.2	\$ 10,756.18	100%	100%	0%	0%	100%	\$572.00	2.6
	SCHS	Autodesk - Certified User Inventor	X	11	11	0	11	0	11	0.2	\$ 9,101.39	100%	100%	0%	0%	100%		2.2
	RHS	Autodesk - Certified User Revit	X	7	7	0	7	0	7	0.2	\$ 5,791.79	100%	100%	0%	0%	100%		1.4
	SCHS	Autodesk - Certified User Revit	X	12	12	0	12	0	12	0.2	\$ 9,928.79	100%	100%	0%	0%	100%		2.4
Early Childhood Ed	EGHS	Intro to Childcare Training Certificate		12	12	0	12	0	12	0	\$ -	100%	100%	0%	0%	100%		0.0
	MIHS	Intro to Childcare Training Certificate		13	13	0	13	0	13	0	\$ -	100%	100%	0%	0%	100%		0.0
	PBMS	Intro to Childcare Training Certificate		7	7	0	7	0	7	0	\$ -	100%	100%	0%	0%	100%		0.0
	SHS	Intro to Childcare Training Certificate		7	7	0	7	0	7	0	\$ -	100%	100%	0%	0%	100%		0.0
	VHS	Intro to Childcare Training Certificate		2	2	0	2	0	2	0	\$ -	100%	100%	0%	0%	100%	\$202.00	0.0
	EGHS	Staff Credential		11	11	0	11	0	11	0	\$ -	100%	100%	0%	0%	100%	\$460.00	0.0
	MIHS	Staff Credential		4	4	0	4	0	4	0	\$ -	100%	100%	0%	0%	100%	\$240.00	0.0
	PBMS	Staff Credential		1	1	0	1	0	1	0	\$ -	100%	100%	0%	0%	100%	\$320.00	0.0
	SHS	Staff Credential		7	7	0	7	0	7	0	\$ -	100%	100%	0%	0%	100%	\$300.00	0.0
	VHS	Staff Credential		1	1	0	1	0	1	0	\$ -	100%	100%	0%	0%	100%		0.0
Emergency Medical Responder	AHS	CPR/AED/BLS for Healthcare Providers		13	13	0	13	0	13	0	\$ -	100%	100%	0%	0%	100%		0.0
	AHS	EMR	X	13	13	0	5	8	13	0.1	\$ 2,068.50	100%	38%	62%	0%	100%	\$1,300.00	0.5
	MHS	EMR	X	17	17	0	11	6	17	0.1	\$ 4,550.69	100%	65%	35%	0%	100%	\$2,100.00	1.1
Emerging Tech Business	AHS	MOS Bundle	X	5	5	0	5	0	5	0.2	\$ 4,136.99	100%	100%	0%	0%	100%		1.0
Engineering Technology	AHS	Autodesk - Certified User AutoCAD	X	10	10	0	1	9	10	0.2	\$ 827.40	100%	10%	90%	0%	100%		0.2
	AHS	Autodesk - Certified User Inventor	X	1	1	0	0	1	1	0.2	\$ -	100%	0%	100%	0%	100%		0.0
	AHS	Autodesk - Certified User Revit	X	2	2	0	2	0	2	0.2	\$ 1,654.80	100%	100%	0%	0%	100%		0.4
	AHS	Solidworks	X	19	19	0	1	18	19	0.2	\$ 827.40	100%	5%	95%	0%	100%	\$1,100.00	0.2
	BHS	Solidworks	X	26	26	0	9	17	26	0.2	\$ 7,446.59	100%	35%	65%	0%	100%	\$2,666.00	1.8
	MHS	Solidworks	X	36	34	0	30	4	34	0.2	\$ 24,821.96	94%	88%	12%	0%	100%	\$2,666.00	6.0
	PBMS	Solidworks	X	14	14	0	7	6	13	0.2	\$ 5,791.79	100%	54%	46%	0%	93%	\$4,044.00	1.4
Environmental Water	SCHS	Solidworks	X	15	15	0	12	3	15	0.2	\$ 9,928.79	100%	80%	20%	0%	100%	\$4,152.00	2.4
	HHS	Waste Water Treatment Plant Operator C	X	1	1	0	0	1	1	0.1	\$ -	100%	0%	100%	0%	100%		0.0
Fashion Design Services	HHS	Water Treatment Plant Operator C	X	21	20	0	9	11	20	0.1	\$ 3,723.29	95%	45%	55%	0%	100%	\$2,200.00	0.9
	VHS	Adobe: Illustrator	X	16	16	0	2	14	16	0.1	\$ 827.40	100%	13%	88%	0%	100%		0.2
	CBHS	NOCTI - Apparel & Text Prod & Mer		10	10	0	7	3	10	0	\$ -	100%	70%	30%	0%	100%	\$332.00	0.0
	MHS	NOCTI - Apparel & Text Prod & Mer		9	9	0	5	4	9	0.0	\$ -	100%	56%	44%	0%	100%	\$288.00	0.0
	PBMS	NOCTI - Apparel & Text Prod & Mer		7	7	0	6	1	7	0	\$ -	100%	86%	14%	0%	100%	\$276.00	0.0
	RHS	NOCTI - Apparel & Text Prod & Mer		10	10	0	10	0	10	0	\$ -	100%	100%	0%	0%	100%	\$340.00	0.0
	SHS	NOCTI - Apparel & Text Prod & Mer		5	5	0	5	0	5	0	\$ -	100%	100%	0%	0%	100%	\$421.00	0.0
	THS	NOCTI - Apparel & Text Prod & Mer		13	13	0	10	3	13	0	\$ -	100%	77%	23%	0%	100%	\$356.00	0.0
Finance Academy	MHS	MOS Bundle	X	64	64	22	42	0	42	0.2	\$ 34,750.75	100%	100%	0%	34%	66%	\$3,901.33	8.4
	MHS	MOS Bundle	X	28	28	0	27	1	28	0.2	\$ 22,339.77	100%	96%	4%	0%	100%	\$3,901.33	5.4
	MHS	MOS Bundle	X	178	178	91	87	0	87	0.2	\$ 71,983.69	100%	100%	0%	51%	49%	\$3,901.33	17.4
	VHS	MOS Bundle	X	169	169	127	42	0	42	0.2	\$ 34,750.75	100%	100%	0%	75%	25%	\$9,020.00	8.4
	VHS	MOS Bundle	X	5	5	0	5	0	5	0.2	\$ 4,136.99	100%	100%	0%	0%	100%		1.0
VHS	MOS Master	X	2	2	0	2	0	2	0.2	\$ 1,654.80	100%	100%	0%	0%	100%		0.4	

# 2015-2016 Industry Certification

## HS Results by Program

Program	School	Assessment	School Grade	# Students Identified	# Participants	# In Progress	# Passing	# Failing	# Completing	Funding Weights	Potential CAPE Funding \$	% Participants	% Passing	% Failing	% In Progress	% Completing	Cost of Assessments & Test Prep Used	Potential Bonus FTE Calculation
Food Science	AHS	ServSafe Manager	X	67	67	0	39	28	67	0.2	\$ 32,268.55	100%	58%	42%	0%	100%	\$5,378.36	7.8
	HHS	ServSafe Manager	X	60	60	0	15	45	60	0.2	\$ 12,410.98	100%	25%	75%	0%	100%	\$6,343.11	3.0
	MHS	ServSafe Manager	X	22	22	0	19	3	22	0.2	\$ 15,720.58	100%	86%	14%	0%	100%	\$2,481.20	3.8
	MIHS	ServSafe Manager	X	6	6	0	0	6	6	0.2	\$ -	100%	0%	100%	0%	100%	\$952.99	0.0
	SHS	ServSafe Manager	X	37	37	0	9	28	37	0.2	\$ 7,446.59	100%	24%	76%	0%	100%	\$2,707.03	1.8
Gaming	VHS	ServSafe Manager	X						0	0.2	\$ -						\$2,144.04	0.0
	PBMS	Adobe: Photoshop	X	41	41	0	15	26	41	0.1	\$ 6,205.49	100%	37%	63%	0%	100%		1.5
GIS Technology	CBHS	GIS Technician	X	2	2	0	2	0	2	0.1	\$ 827.40	100%	100%	0%	0%	100%	\$1,850.00	0.2
Health & Wellness	BHS	CMAA	X	36	36	0	36	0	36	0.1	\$ 14,893.18	100%	100%	0%	0%	100%	\$5,292.00	3.6
	CHS	CMAA	X	10	10	0	6	4	10	0.1	\$ 2,482.20	100%	60%	40%	0%	100%	\$1,470.00	0.6
	EGHS	CMAA	X	13	13	0	13	0	13	0.1	\$ 5,378.09	100%	100%	0%	0%	100%	\$1,911.00	1.3
	HHS	CMAA	X	84	84	0	50	34	84	0.1	\$ 20,684.97	100%	60%	40%	0%	100%	\$13,083.00	5.0
	EGHS	CPR		18	18	0	18	0	18	0	\$ -	100%	100%	0%	0%	100%		0.0
	BHS	CPR/AED/BLS for Healthcare Providers		24	24	0	24	0	24	0	\$ -	100%	100%	0%	0%	100%		0.0
Health Science	HHS	CPR/AED/BLS for Healthcare Providers		67	67	0	67	0	67	0	\$ -	100%	100%	0%	0%	100%		0.0
	PBMS	CPR/AED/BLS for Healthcare Providers		36	36	0	36	0	36	0	\$ -	100%	100%	0%	0%	100%		0.0
Dental	THS	CPR/AED/BLS for Healthcare Providers		62	62	0	62	0	62	0	\$ -	100%	100%	0%	0%	100%		0.0
	VHS	CMAA	X	22	22	0	22	0	22	0.1	\$ 9,101.39	100%	100%	0%	0%	100%	\$3,528.00	2.2
Hosp & Tourism	VHS	CPR/AED/BLS for Healthcare Providers		33	33	0	33	0	33	0	\$ -	100%	100%	0%	0%	100%		0.0
	MIHS	MOS Bundle	X	15	15	7	5	3	8	0.2	\$ 4,136.99	100%	63%	38%	47%	53%	\$1,760.00	1.0
	RHS	MOS Bundle	X	19	19	19	0	0	0	0.2	\$ -	100%	0%	0%	100%	0%	\$836.00	0.0
Interior Design	MIHS	ServSafe Manager	X	8	7	0	0	7	7	0.2	\$ -	88%	0%	100%	0%	100%	\$284.84	0.0
	RHS	ServSafe Manager	X	22	21	0	4	17	21	0.2	\$ 3,309.60	95%	19%	81%	0%	100%	\$756.49	0.8
	HHS	Chief Architect Apprentice	X	15	15	0	15	0	15	0.2	\$ 12,410.98	100%	100%	0%	0%	100%	\$675.00	3.0
VHS	Chief Architect Apprentice	X	17	17	0	12	5	17	0.2	\$ 9,928.79	100%	71%	29%	0%	100%	\$1,135.00	2.4	
Int'l Business	CBHS	MOS Bundle	X	87	61	27	31	29	60	0.2	\$ 25,649.36	70%	52%	48%	44%	98%	\$4,532.00	6.2
Intro to Info Tech	HHS	MTA Windows OS Fundamentals	X	4	4	0	1	3	4	0.1	\$ 413.70	100%	25%	75%	0%	100%		0.1
Marine Tech	EGHS	FLADA	X	28	28	0	10	18	28	0.1	\$ 4,136.99	100%	36%	64%	0%	100%	\$1,678.95	1.0
Marketing Management	CBHS	Adobe: InDesign	X	22	22	0	8	14	22	0.1	\$ 3,309.60	100%	36%	64%	0%	100%		0.8
	SHS	Adobe: InDesign	X	3	3	0	3	0	3	0.1	\$ 1,241.10	100%	100%	0%	0%	100%		0.3
	MIHS	MOS Bundle	X	24	24	7	8	9	17	0.2	\$ 6,619.19	100%	47%	53%	29%	71%	\$880.00	1.6
Medical Admin Specialist	HHS	CMAA	X	42	42	0	36	6	42	0.1	\$ 14,893.18	100%	86%	14%	0%	100%	\$6,762.00	3.6
Patient Care Assisting	AHS	C N A	X	23	23	0	23	0	23	0.1	\$ 9,515.09	100%	100%	0%	0%	100%	\$3,220.00	2.3
	BHS	C N A	X	14	14	0	11	3	14	0.1	\$ 4,550.69	100%	79%	21%	0%	100%	\$2,100.00	1.1
	MHS	C N A	X	11	11	0	11	0	11	0.1	\$ 4,550.69	100%	100%	0%	0%	100%	\$1,960.00	1.1
	PBMS	C N A	X	13	13	0	13	0	13	0.1	\$ 5,378.09	100%	100%	0%	0%	100%	\$1,960.00	1.3
	RHS	C N A	X	14	14	0	14	0	14	0.1	\$ 5,791.79	100%	100%	0%	0%	100%	\$2,100.00	1.4
	THS	C N A	X	35	35	0	32	3	35	0.1	\$ 13,238.38	100%	91%	9%	0%	100%	\$5,040.00	3.2
	AHS	CPR/AED/BLS for Healthcare Providers		56	56	0	56	0	56	0	\$ -	100%	100%	0%	0%	100%		0.0
	RHS	CPR/AED/BLS for Healthcare Providers		40	40	0	40	0	40	0	\$ -	100%	100%	0%	0%	100%		0.0
	THS	CPR/AED/BLS for Healthcare Providers		35	35	0	32	3	35	0	\$ -	100%	91%	9%	0%	100%		0.0
	THS	CPR/AED/BLS for Healthcare Providers		136	136	0	136	0	136	0	\$ -	100%	100%	0%	0%	100%		0.0
PC Support	HHS	MTA Database Admin Fundamentals	X	1	1	0	1	0	1	0.2	\$ 827.40	100%	100%	0%	0%	100%		0.2
	HHS	MTA Networking Fundamentals	X	1	1	0	1	0	1	0.1	\$ 413.70	100%	100%	0%	0%	100%		0.1
	HHS	MTA Security Fundamentals	X	7	7	0	4	3	7	0.1	\$ 1,654.80	100%	57%	43%	0%	100%		0.4
	CHS	MTA Windows OS Fundamentals	X	6	6	0	2	4	6	0.1	\$ 827.40	100%	33%	67%	0%	100%	\$396.00	0.2
	HHS	MTA Windows OS Fundamentals	X	21	21	0	10	11	21	0.1	\$ 4,136.99	100%	48%	52%	0%	100%	\$1,936.00	1.0

## 2015-2016 Industry Certification

### HS Results by Program

Program	School	Assessment	School Grade	# Students Identified	# Participants	# In Progress	# Passing	# Failing	# Completing Participants	Funding Weights	Potential CAPE Funding \$	% Participants	% Passing	% Failing	% In Progress	% Completing Participants	Cost of Assessments & Test Prep Used	Potential Bonus FTE Calculation	
PLTW - ENGINEERING	MIHS	Autodesk - Certified User Inventor	X	37	38	0	28	9	37	0.2	\$ 23,167.17	103%	76%	24%	0%	97%	\$1,672.00	5.6	
	Teacher Assisting	SCHS	ParaPro	19	19	0	15	4	19	0	\$ -	100%	79%	21%	0%	100%	\$1,045.00	0.0	
Tech Support - Client	HHS	MOS Bundle	X	1	1	0	1	0	1	0.2	\$ 827.40	100%	100%	0%	0%	100%		0.2	
	HHS	MTA Windows OS Fundamentals	X	18	18	0	2	16	18	0.1	\$ 827.40	100%	11%	89%	0%	100%		0.2	
Technical Design	AHS	Autodesk - Certified User AutoCAD	X	67	67	0	31	36	67	0.2	\$ 25,649.36	100%	46%	54%	0%	100%	\$3,801.00	6.2	
	BHS	Autodesk - Certified User AutoCAD	X	2	2	0	0	2	2	0.2	\$ -	100%	0%	100%	0%	100%	\$2,068.00	0.0	
	CHS	Autodesk - Certified User AutoCAD	X	15	15	0	10	5	15	0.2	\$ 8,273.99	100%	67%	33%	0%	100%	\$660.00	2.0	
	EGHS	Autodesk - Certified User AutoCAD	X	24	24	0	19	5	24	0.2	\$ 15,720.58	100%	79%	21%	0%	100%	\$1,100.00	3.8	
	PBMS	Autodesk - Certified User AutoCAD	X	1	1	0	0	1	1	0.2	\$ -	100%	0%	100%	0%	100%		0.0	
	SHS	Autodesk - Certified User AutoCAD	X	27	26	0	23	3	26	0.2	\$ 19,030.17	96%	88%	12%	0%	100%	\$1,188.00	4.6	
	AHS	Autodesk - Certified User Inventor	X	23	23	0	13	10	23	0.2	\$ 10,756.18	100%	57%	43%	0%	100%		2.6	
	BHS	Autodesk - Certified User Inventor	X	17	17	0	17	0	17	0.2	\$ 14,065.78	100%	100%	0%	0%	100%		3.4	
	PBMS	Autodesk - Certified User Inventor	X	18	18	0	10	8	18	0.2	\$ 8,273.99	100%	56%	44%	0%	100%	\$880.00	2.0	
	AHS	Autodesk - Certified User Revit	X	62	62	0	46	16	62	0.2	\$ 38,060.34	100%	74%	26%	0%	100%		9.2	
	BHS	Autodesk - Certified User Revit	X	22	22	0	19	3	22	0.2	\$ 15,720.58	100%	86%	14%	0%	100%		3.8	
	PBMS	Solidworks	X	2	2	0	1	1	2	0.2	\$ 827.40	100%	50%	50%	0%	100%	\$1,378.00	0.2	
TV Production	BHS	AVID	X	31	31	0	31	0	31	0.1	\$ 12,824.68	100%	100%	0%	0%	100%	\$1,000.00	3.1	
	EHS	AVID	X	33	33	0	33	0	33	0.1	\$ 13,652.08	100%	100%	0%	0%	100%	\$1,325.00	3.3	
	SCHS	AVID	X	22	22	0	22	0	22	0.1	\$ 9,101.39	100%	100%	0%	0%	100%	\$1,000.00	2.2	
	THS	AVID	X	4	4	0	4	0	4	0.1	\$ 1,654.80	100%	100%	0%	0%	100%	\$1,000.00	0.4	
	VHS	AVID	X	41	23	0	23	0	23	0.1	\$ 9,515.09	56%	100%	0%	0%	100%	\$1,325.00	2.3	
Web Development	AHS	Adobe: Dreamweaver	X	2	2	0	0	2	2	0.2	\$ -	100%	0%	100%	0%	100%		0.0	
	CHS	Adobe: Dreamweaver	X	9	9	0	0	9	9	0.2	\$ -	100%	0%	100%	0%	100%	\$5,525.08	0.0	
	MHS	Adobe: Dreamweaver	X	8	8	0	7	1	8	0.2	\$ 5,791.79	100%	88%	13%	0%	100%	\$5,625.07	1.4	
	MIHS	Adobe: Dreamweaver	X	39	39	0	38	1	39	0.2	\$ 31,441.15	100%	97%	3%	0%	100%	\$8,446.09	7.6	
	THS	Adobe: Dreamweaver	X	9	9	0	7	2	9	0.2	\$ 5,791.79	100%	78%	22%	0%	100%	\$5,361.06	1.4	
	AHS	Adobe: Flash	X	1	1	0	0	1	1	0.2	\$ -	100%	0%	100%	0%	100%		0.0	
	MHS	Adobe: Flash	X	8	8	0	6	2	8	0.2	\$ 4,964.39	100%	75%	25%	0%	100%		1.2	
	MIHS	Adobe: Flash	X	9	9	0	9	0	9	0.2	\$ 7,446.59	100%	100%	0%	0%	100%		1.8	
	MHS	Adobe: Illustrator	X	3	3	0	3	0	3	0.1	\$ 1,241.10	100%	100%	0%	0%	100%		0.3	
	THS	Adobe: Illustrator	X	1	1	0	1	0	1	0.1	\$ 413.70	100%	100%	0%	0%	100%		0.1	
MHS	Adobe: Photoshop	X	5	5	0	3	0	3	0.1	\$ 1,241.10	100%	100%	0%	0%	60%		0.3		
Grand Total											\$1,733,400.47							\$366,515.06	419.00
Return on Investment											\$1,366,885.41								

**This page intentionally left blank.**

# Industry Certification

## Appendix



**This page intentionally left blank.**

## 2015-2016 Industry Certification HS Return on Investment (ROI)

Vendor	Assessment	Subtest	Potential CAPE Funding	Cost of Assesment & Test Prep	ROI	ROI
Certipoint	Adobe	Adobe: Dreamweaver	\$45,506.93	\$56,333.59	\$328,731.01	\$994,172.86
		Adobe: Flash	\$33,923.35			
		Adobe: Illustrator	\$106,320.74	\$31,331.74		
		Adobe: InDesign	\$114,181.03	\$325.00		
		Adobe: Photoshop	\$136,520.80	\$24,282.22		
		Adobe: Premiere Pro	\$4,550.69			
	AutoDesk	Autodesk - Certified User AutoCAD	\$100,115.25	\$11,017.00	\$223,067.05	
		Autodesk - Certified User Inventor	\$65,364.50	\$2,552.00		
		Autodesk - Certified User Revit	\$71,156.30			
	Intuit: Quick Books		\$9,101.39	\$484.00	\$8,617.39	
	Microsoft Office	MOS Bundle	\$492,302.28	\$71,933.44	\$426,988.03	
		MOS Master	\$6,619.19			
	MTA	MTA Database Admin Fundamentals	\$827.40		\$6,769.39	
		MTA Networking Fundamentals	\$413.70			
		MTA Security Fundamentals	\$1,654.80			
MTA Windows OS Fundamentals		\$6,205.49	\$2,332.00			
ALP		\$6,619.19	\$1,775.00	\$4,844.19		
ASE MLR G-1		\$1,654.80	\$511.00	\$1,143.80		
AVID		\$46,748.03	\$5,650.00	\$41,098.03		
C N A		\$43,024.74	\$16,380.00	\$26,644.74		
Chief Architect Apprentice		\$22,339.77	\$1,810.00	\$20,529.77		
CMAA		\$67,433.00	\$32,046.00	\$35,387.00		
EMR		\$6,619.19	\$3,400.00	\$3,219.19		
EPA		\$0.00	\$1,250.00	-\$1,250.00		
FLADA		\$53,367.22	\$21,252.80	\$32,114.42		
GIS Technician		\$827.40	\$1,850.00	-\$1,022.60		
HVAC Excellence - A/C		\$16,547.98	\$930.00	\$15,617.98		
HVAC Excellence - Electrical		\$17,375.37		\$17,375.37		
Intro to Childcare Training Certificate		\$0.00	\$202.00	-\$202.00		
NATE		\$4,136.99	\$3,200.00	\$936.99		
NCCER		\$19,857.57	\$3,069.85	\$16,787.72		
NOCTI	NOCTI - Apparel & Text Prod & Mer	\$0.00	\$2,013.00			
	NOCTI - Criminal Justice	\$0.00	\$420.00			
OSHA-10		\$0.00	\$255.00	-\$255.00		
ParaPro		\$0.00	\$1,045.00	-\$1,045.00		
National Restaurant Association	ProStart Certificate of Achievement	\$15,720.58	\$1,558.00	\$132,045.72		
	SafeStaff Food Handler Certification	\$0.00	\$4,611.60			
	ServSafe Manager	\$162,997.56	\$40,502.82			
Solidworks		\$49,643.93	\$18,672.00	\$30,971.93		
Staff Credential		\$0.00	\$1,320.00	-\$1,320.00		
Waste Water Treatment Plant Operator C		\$0.00		\$0.00		
Water Treatment Plant Operator C		\$3,723.29	\$2,200.00	\$1,523.29		
<b>Grand Total</b>			\$1,733,400.47	\$366,515.06	\$1,366,885.41	