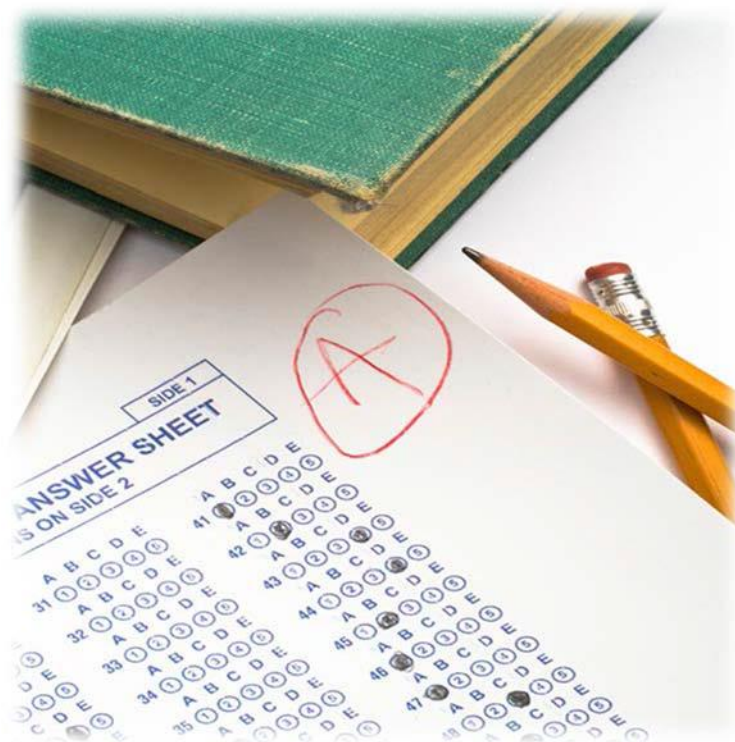


# Industry Certification Results 2016- 2017



**Brevard Public Schools**  
**Dr. Desmond Blackburn, Superintendent**

**SCHOOL BOARD OF BREVARD COUNTY**

Educational Services Facility  
2700 Judge Fran Jamieson Way  
Viera, FL 32940-6601

**SCHOOL BOARD MEMBERS**

John Craig, Chairman  
Tina Descovich, Vice Chairman  
Misty Belford  
Matt Susin  
Andy Ziegler

**SUPERINTENDENT**

Dr. Desmond Blackburn



**SECONDARY LEADING & LEARNING**

Dr. Stephanie Soliven  
Associate Superintendent

**OFFICE OF CAREER & TECHNICAL EDUCATION**

Janice Scholz  
Director

# Table of Contents

<b>Introduction</b> .....	1
<b>Industry Certification Results; 6 Year Summary</b> .....	3
<b>Industry Certification District Results</b> .....	7
<b>Industry Certification Results by High School</b> .....	11
Astronaut High School .....	13
Bayside High School .....	14
Cocoa Beach Jr./Sr. High School .....	15
Cocoa High School.....	16
Eau Gallie High School .....	17
Edgewood Jr./Sr. High School.....	18
Heritage High School.....	19
Melbourne High School .....	20
Merritt Island High School .....	21
Palm Bay High School.....	22
Rockledge High School.....	23
Satellite High School.....	24
Space Coast Jr./Sr. High School .....	25
Titusville High School .....	26
Viera High School .....	27
West Shore High School.....	28
<b>Industry Certification Results By Middle School</b> .....	29
Cocoa Beach .....	31
Cocoa .....	32
Central .....	33
DeLaura .....	34
Hoover .....	35
Jackson .....	36
Jefferson .....	37
Johnson .....	38
Kennedy .....	39
Madison.....	40
McNair .....	41
Space Coast .....	42
Stone .....	43
Southwest .....	44
<b>Industry Certification Results by Assessment</b> .....	45
<b>Industry Certification Results by Program</b> .....	55
<b>Industry Certification Appendix</b> .....	65

**This page intentionally left blank.**

## **Introduction**

Today's educational environment is heavily focused on accountability, standards and assessment. At the same time, industry is seeking assurances that job seekers have the skills required to fill their openings. At the local, state and federal levels, CTE programs are being tasked with providing students with credentials and certifications which are recognized and valued by our business and industry partners. Having a strong connection to industry, career and technical education has long understood the importance of industry recognized credential and certifications.

### **BPS Graduation Requirement**

To ensure that every BPS graduate is postsecondary and/or workforce ready, students are required to complete a program of study which includes a minimum of 3 credits in one of the following areas:

- Approved dual enrollment, AP, IB, AICE or approved Honors Courses

**or**

- Sequential CTE program of study resulting in a credential endorsed by a national, state or local industry

### **State Requirement – CAPE Academies**

At the state level, Florida Statutes require that career and professional academies be coordinated with the appropriate industry indicating that all components of the program are relevant and appropriate to prepare the student for further education and for employment in that industry. Florida Statutes further define that the State Board of Education, together with the Workforce Florida, Inc., will develop and adopt rules for implementing an industry certification process, based upon the highest available national standards for specific industry certification, to ensure student skill proficiency and to address emerging labor market and industry trends.

Florida Statutes require that all career-themed courses offered by a secondary school must lead to industry certification or college credit. Statutes further require that if the passage rate on an industry certification examination falls below 50%, the 3-year strategic plan must be amended to include specific strategies to improve the passage rate of the career-themed course.

Each school district shall make available digital materials, CAPE Digital Tools certificates, and CAPE industry certifications for students in prekindergarten through grade 12. Industry certifications that have a statewide articulation agreement approved by the State Board of Education may substitute the certification for up to two mathematics credits, except for Algebra 1 and Geometry and for one science credit, except for Biology 1. Industry certifications earned in information technology that is identified on the CAPE Industry Certification Funding List satisfy the online graduation requirement.

### **State Requirement – School Grade and Diploma Designations**

Florida Statutes requires a portion of the high school and middle school grade be determined by students' participation and performance in industry certifications. Florida Statutes further expand the requirements for CTE industry certification by including student attainment of CTE industry certifications as one of the two Standard High School Diploma Designations.

## **Federal Requirements**

At the federal level, the Carl D. Perkins Career and Technical Education Act was reauthorized in 2006 and required student attainment of career and technical skill proficiencies, including student achievement on technical assessments that are aligned with industry-recognized standards. They are designed to measure the extent CTE concentrators (3 credits in the same CTE program) are leaving high school with validated technical skills. The Florida DOE approves the Technical Skill Attainment List using the following criteria: requires a minimum of 150 hours' instruction, is occupationally specific, is a State or federally regulated professional license, and the certifying agency is accredited.

In response to the federal requirements, future district Perkins Act federal funding to BPS includes performance measures, targets and potential sanctions regarding Technical Skill Attainment for program concentrators. The SY 2016-2017 target for BPS, established by the Florida DOE, was 93.47%.

In addition to the local, state and federal requirements for student industry certification, teachers and administrators can use assessment results to learn about student's skills as well as learn about the effectiveness of instruction and then apply that to instructional improvements. Assessment can be one of the most effective tools for increasing student achievement. By using assessment data for instructional purposes, teachers can improve program curriculum, identify instructional needs and maintain a continuous improvement process.

Focused on the new vision of Career and Technical Education, assessments are to be utilized for CTE students as they participate and/or complete their technical program of study. Assessments, while required at the federal, state and district levels, measure student understanding of both the knowledge and skills that are the foundation of the CTE program.

It is imperative that teachers and administrators maintain a positive perception of the value of technical skill attainment. Not only does it meet new local, state and federal requirements for CTE programs, assessments can provide a continuous improvement model for CTE instruction. Industry certifications can also provide business and industry with the assurance that CTE concentrators have the skills required to fill their openings; a win-win situation for all.

# **Industry Certification Results Six Year Summary**



**This page intentionally left blank.**



# 2016-2017 Industry Certification Results

## Past 6 Years

Year	# Students Identified	# Participants	# Passing	# Failing	# Completing Participants	% Participants	% Passing	% Failing	Cost of Assessments
2016-17	6,261	6,261	4,702	1,561	100%	100	75%	25%	\$323,783.20
2015-16	5,883	5,844	3,900	1,326	5,226	99%	75%	25%	\$366,515.06
2014-15	5,517	5,419	3,395	1,126	4,521	98%	75%	25%	\$300,504.16
2013-14	4,760	4,737	3,180	942	4,122	100%	77%	23%	\$265,949.13
2012-13	3,716	3,513	2,447	780	3,227	95%	76%	24%	\$224,469.77
2011-12	3,101	3,051	1,859	718	2,577	98%	72%	28%	\$147,739.39

**This page intentionally left blank.**

# Industry Certification District Results



**This page intentionally left blank.**

# 2016-17 District High School Industry Certification

2016-17 District Industry Certification																2016-17 Senior Industry Certification Statistics	
School	# Students Identified	# Participants	# In Progress	# Passing	# Failing	# Completing Participants	Funding Weights	% Participants	% Passing	% Failing	% In Progress	% Completing Participants	Cost of Assessments & Test Prep Used	Potential Bonus FTE Calculation	Potential CAPE Funding \$	Unduplicated Count of Seniors with Industry Certifications	# Industry Certification Earned by Seniors 2017
AHS	420	420	0	287	133	420		100%	68%	32%	0%	100%	\$ 21,909.70	22.0000	\$ 91,478.79	249	104
BHS	619	619	0	545	74	619		100%	88%	12%	0%	100%	\$ 29,506.81	54.0000	\$ 224,538.85	387	229
CBHS	94	94	0	74	20	94		100%	79%	21%	0%	100%	\$ 7,300.00	14.3000	\$ 59,461.21	197	28
CHS	322	322	0	190	132	322		100%	59%	41%	0%	100%	\$ 17,588.01	11.1000	\$ 46,155.21	186	106
EGHS	382	382	0	219	163	382		100%	57%	43%	0%	100%	\$ 23,266.55	21.6000	\$ 89,815.54	418	96
EHS	155	155	0	114	41	155		100%	74%	26%	0%	100%	\$ 4,451.89	11.4000	\$ 47,402.65	134	27
HHS	586	586	0	394	192	586		100%	67%	33%	0%	100%	\$ 37,934.77	35.1000	\$ 145,950.25	413	179
MHS	723	723	0	597	126	723		100%	83%	17%	0%	100%	\$ 35,649.37	59.3000	\$ 246,576.93	526	302
MIHS	338	338	0	287	51	338		100%	85%	15%	0%	100%	\$ 20,186.78	40.2000	\$ 167,156.70	353	133
PBHS	493	493	0	285	210	495		100%	58%	42%	0%	100%	\$ 17,219.25	19.3000	\$ 80,251.85	305	118
RHS	414	414	0	342	72	414		100%	83%	17%	0%	100%	\$ 17,087.06	26.1000	\$ 108,527.11	291	99
SHS	244	244	0	161	83	244		100%	66%	34%	0%	100%	\$ 13,506.05	16.1000	\$ 66,945.84	166	77
SCHS	168	168	0	153	15	168		100%	91%	9%	0%	100%	\$ 11,670.85	28.0000	\$ 116,427.55	303	93
THS	652	652	0	556	96	652		100%	85%	15%	0%	100%	\$ 27,391.84	47.4000	\$ 197,095.22	319	184
VHS	619	619	0	477	142	619		100%	77%	23%	0%	100%	\$ 37,826.27	55.8000	\$ 232,023.48	473	217
WSHS	18	18	0	7	11	18		100%	39%	61%	0%	100%	\$ 760.00	0.7000	\$ 2,910.69	148	2
AMI/Odyssey	14	14	0	14	0	14		100%	100%	0%	0%	100%	\$ 528.00	2.7000	\$ 11,226.94	28	1
	<b>6,261</b>	<b>6,261</b>	<b>-</b>	<b>4,702</b>	<b>1,561</b>	<b>6,263</b>		<b>100%</b>	<b>74%</b>	<b>26%</b>	<b>0%</b>	<b>100%</b>	<b>\$323,783.20</b>	<b>465.1000</b>	<b>\$ 1,933,944.82</b>	<b>4,868</b>	<b>1,994</b>

**This page intentionally left blank.**

# Industry Certification Results By School



**This page intentionally left blank.**



2016-17 Industry Certification  
Astronaut High School

School	Program	CERT #	Assessment	Teacher of Record	School Grade	# Students Identified	# Participants	# In Progress	# Passing	# Failing	# Completing Participants	Funding Weights	Potential CAPE Funding \$	% Participants	% Passing	% Failing	% In Progress	% Completing Participants	Cost of Assessments & Test Prep Used	Potential Bonus FTE Calculation
AHS	Digital Info Tech	MICRO017	MS Office Master	Ament	X	1	1	0	1	0	1	0.2	\$ 831.63	100%	100%	0%	0%	100%	\$109.46	0.2
AHS	Digital Info Tech	MICRO69	MOS Bundle	Ament	X	24	24	0	20	4	24	0.2	\$ 16,632.51	100%	83%	17%	0%	100%	\$2,626.97	4.0
AHS	Bus Software App	MICRO69	MOS Bundle	Ament	X	10	10	0	10	0	10	0.2	\$ 8,316.25	100%	100%	0%	0%	100%	\$1,094.57	2.0
AHS	Digital Media/MM	ADOBE20	Adobe: Illustrator	Deese	X	45	45	0	13	32	45	0.1	\$ 5,405.56	100%	29%	71%	0%	100%	\$2,168.80	1.3
AHS	Digital Media/MM	ADOBE21	Adobe: InDesign	Deese	X	1	1	0	1	0	1	0.1	\$ 415.81	100%	100%	0%	0%	100%	\$48.20	0.1
AHS	Digital Media/MM	ADOBE22	Adobe: Photoshop	Deese	X	87	87	0	31	56	87	0.1	\$ 12,890.19	100%	36%	64%	0%	100%	\$4,193.01	3.1
AHS	Patient Care Assisting	FDMQA002	C N A	McCain	X	27	27	0	23	4	27	0.1	\$ 9,563.69	100%	85%	15%	0%	100%	\$4,340.00	2.3
AHS	Patient Care Assisting		CPR/AED/BLS for Healthcare Providers	McCain		26	26	0	26	0	26	0	\$ -	100%	100%	0%	0%	100%	\$104.00	0.0
AHS	Health Science		CPR/AED/BLS for Healthcare Providers	McCain		34	34	0	34	0	34	0	\$ -	100%	100%	0%	0%	100%	\$136.00	0.0
AHS	Food Science	NRAEF003	ServSafe Manager	Morgenthal	X	40	40	0	21	19	40	0.2	\$ 17,464.13	100%	53%	48%	0%	100%	\$389.70	4.2
AHS	Technical Design	ADESK002	Autodesk - Certified User AutoCAD	Reda, K	X	6	6	0	0	6	6	0.2	\$ -	100%	0%	100%	0%	100%	\$460.50	0.0
AHS	Technical Design	ADESK011	Autodesk - Certified User Inventor	Reda, K	X	6	6	0	4	2	6	0.2	\$ 3,326.50	100%	67%	33%	0%	100%	\$460.50	0.8
AHS	Technical Design	ADESK029	Autodesk Certified Professional - 3ds Max	Reda, K	X	1	1	0	0	1	1	0.1	\$ -	100%	0%	100%	0%	100%	\$76.75	0.0
AHS	Digital Info Tech	MICRO069	MOS Bundle	Reda, K	X	7	7	0	3	4	7	0.2	\$ 2,494.88	100%	43%	57%	0%	100%	\$537.25	0.6
AHS	Emergency Medical Responder	IEMSR001	EMR	Wallace	X	39	39	0	34	5	39	0.1	\$ 14,137.63	100%	87%	13%	0%	100%	\$4,900.00	3.4
AHS	Emergency Medical Responder		CPR/AED/BLS for Healthcare Providers	Wallace		39	39	0	39	0	39	0	\$ -	100%	100%	0%	0%	100%	\$156.00	0.0
AHS	Health Science		CPR/AED/BLS for Healthcare Providers	Wallace		27	27	0	27	0	27	0	\$ -	100%	100%	0%	0%	100%	\$108.00	0.0
<b>School Total:</b>						<b>420</b>	<b>420</b>	<b>0</b>	<b>287</b>	<b>133</b>	<b>420</b>		<b>\$ 91,478.79</b>	<b>100%</b>	<b>68%</b>	<b>32%</b>	<b>0%</b>	<b>100%</b>	<b>\$21,909.70</b>	<b>22.0</b>

2016-17 Industry Certification  
Bayside High School

School	Program	CERT #	Assessment	Teacher of Record	School Grade	# Students Identified	# Participants	# In Progress	# Passing	# Failing	# Completing Participants	Funding Weights	Potential CAPE Funding \$	% Participants	% Passing	% Failing	% In Progress	% Completing Participants	Cost of Assessments & Test Prep Used	Potential Bonus FTE Calculation
BHS	Culinary Arts	FRALA001	SafeStaff Food Handler Certification	Cox		61	61	0	61	0	61	0	\$ -	100%	100%	0%	0%	100%	\$2,437.03	0.0
BHS	Culinary Arts	NRAEF002	ProStart Certificate of Achievement	Cox	X	5	5	0	5	0	5	0.2	\$ 4,158.13	100%	100%	0%	0%	100%	\$199.76	1.0
BHS	Culinary Arts	NRAEF003	ServSafe Manager	Cox	X	57	57	0	39	18	57	0.2	\$ 32,433.39	100%	68%	32%	0%	100%	\$2,277.22	7.8
BHS	Culinary Arts	FRALA001	SafeStaff Food Handler Certification	Gray		59	59	0	59	0	59	0	\$ -	100%	100%	0%	0%	100%	\$2,357.12	0.0
BHS	Culinary Arts	NRAEF002	ProStart Certificate of Achievement	Gray	X	10	10	0	10	0	10	0.2	\$ 8,316.25	100%	100%	0%	0%	100%	\$399.51	2.0
BHS	Culinary Arts	NRAEF003	ServSafe Manager	Gray	X	58	58	0	42	16	58	0.2	\$ 34,928.27	100%	72%	28%	0%	100%	\$2,317.17	8.4
BHS	Drafting	ADESK008	Autodesk - Certified User Revit	Kimbrell	X	36	36	0	36	0	36	0.2	\$ 29,938.51	100%	100%	0%	0%	100%	\$1,637.50	7.2
BHS	Drafting	ADESK011	Autodesk - Certified User Inventor	Kimbrell	X	33	33	0	33	0	33	0.2	\$ 27,443.64	100%	100%	0%	0%	100%	\$1,501.04	6.6
BHS	Drafting	ADESK024	Autodesk - Inventor Professional	Kimbrell	X	3	3	0	1	2	3	0.2	\$ 831.63	100%	33%	67%	0%	100%	\$136.46	0.2
BHS	Engineering Technology	ADESK011	Autodesk - Certified User Inventor	Mitchell	X	1	1	0	1	0	1	0.2	\$ 831.63	100%	100%	0%	0%	100%	\$74.06	0.2
BHS	Engineering Technology	SOLID003	Solidworks	Mitchell	X	33	33	0	11	22	33	0.2	\$ 9,147.88	100%	33%	67%	0%	100%	\$2,443.83	2.2
BHS	Health Science	NATHA003	CMAA	Parr	X	43	43	0	43	0	43	0.1	\$ 17,879.95	100%	100%	0%	0%	100%	\$5,250.00	4.3
BHS	Health Science		CPR/AED/BLS for Healthcare Providers	Parr		56	56	0	56	0	56	0	\$ -	100%	100%	0%	0%	100%	\$224.00	0.0
BHS	TV Production	AVIDT001	AVID Media Composer	Potter	X	20	20	0	20	0	20	0.1	\$ 8,316.25	100%	100%	0%	0%	100%	\$1,675.00	2.0
BHS	Comm Tech	ADOBE020	Adobe: Illustrator	Robertson	X	6	6	0	6	0	6	0.1	\$ 2,494.88	100%	100%	0%	0%	100%	\$220.34	0.6
BHS	Comm Tech	ADOBE021	Adobe: InDesign	Robertson	X	6	6	0	6	0	6	0.1	\$ 2,494.88	100%	100%	0%	0%	100%	\$220.34	0.6
BHS	Comm Tech	ADOBE022	Adobe: Photoshop	Robertson	X	9	9	0	9	0	9	0.1	\$ 3,742.31	100%	100%	0%	0%	100%	\$330.50	0.9
BHS	Digital Design	ADOBE010	Adobe: Dreamweaver	Robertson	X	1	1	0	1	0	1	0.2	\$ 831.63	100%	100%	0%	0%	100%	\$36.72	0.2
BHS	Digital Design	ADOBE011	Adobe: Flash	Robertson	X	2	2	0	1	1	2	0.2	\$ 831.63	100%	50%	50%	0%	100%	\$73.45	0.2
BHS	Digital Design	ADOBE018	Adobe: Premiere Pro	Robertson	X	3	3	0	3	0	3	0.1	\$ 1,247.44	100%	100%	0%	0%	100%	\$110.17	0.3
BHS	Digital Design	ADOBE020	Adobe: Illustrator	Robertson	X	48	48	0	40	8	48	0.1	\$ 16,632.51	100%	83%	17%	0%	100%	\$1,762.69	4.0
BHS	Digital Design	ADOBE021	Adobe: InDesign	Robertson	X	29	29	0	24	5	29	0.1	\$ 9,979.50	100%	83%	17%	0%	100%	\$1,064.96	2.4
BHS	Digital Design	ADOBE022	Adobe: Photoshop	Robertson	X	15	15	0	13	2	15	0.1	\$ 5,405.56	100%	87%	13%	0%	100%	\$550.84	1.3
BHS	Applied Engineering	ADESK011	Autodesk - Certified User Inventor	Robertson	X	1	1	0	1	0	1	0.2	\$ 831.63	100%	100%	0%	0%	100%	\$74.06	0.2
BHS	Applied Engineering	SOLID003	Solidworks	Robertson	X	1	1	0	1	0	1	0.2	\$ 831.63	100%	100%	0%	0%	100%	\$74.06	0.2
BHS	Patient Care Assisting	FDMQA002	C N A	Stannard	X	12	12	0	12	0	12	0.1	\$ 4,989.75	100%	100%	0%	0%	100%	\$2,015.00	1.2
BHS	Patient Care Assisting		CPR/AED/BLS for Healthcare Providers	Stannard		11	11	0	11	0	11	0	\$ -	100%	100%	0%	0%	100%	\$44.00	0.0
<b>School Total:</b>						<b>619</b>	<b>619</b>	<b>0</b>	<b>545</b>	<b>74</b>	<b>619</b>		<b>\$ 224,538.85</b>	<b>100%</b>	<b>88%</b>	<b>12%</b>	<b>0%</b>	<b>100%</b>	<b>\$29,506.81</b>	<b>54.0</b>

2016-17 Industry Certification  
Cocoa Beach Sr. High School

School	Program	CERT #	Assessment	Teacher of Record	School Grade	# Students Identified	# Participants	# In Progress	# Passing	# Failing	# Completing Participants	Funding Weights	Potential Funding \$	% Participants	% Passing	% Failing	% In Progress	% Completing Participants	Cost of Assessments & Test Prep Used	Potential Bonus FTE Calculation
CBHS	Int'l Business	MICRO017	MS Office Master	Friedlander	X	1	1	0	1	0	1	0.2	\$ 831.63	100%	100%	0%	0%	100%	\$60.93	0.200
CBHS	Int'l Business	MICRO069	MOS Bundle	Friedlander	X	85	85	0	70	15	85	0.2	\$ 58,213.78	100%	82%	18%	0%	100%	\$5,179.07	14.000
CBHS	Fashion Design Services	NOCTI003	NOCTI - Apparel & Text Prod & Mer	Lengyel		5	5	0	2	3	5	0	\$ -	100%	40%	60%	0%	100%	\$210.00	0.000
CBHS	GIS Technology	DIGIT001	GIS Technician	Walz	X	3	3	0	1	2	3	0.1	\$ 415.81	100%	33%	67%	0%	100%	\$1,850.00	0.100
													\$ -							
<b>School Total :</b>						<b>94</b>	<b>94</b>	<b>0</b>	<b>74</b>	<b>20</b>	<b>94</b>		<b>\$ 59,461.21</b>	<b>100%</b>	<b>79%</b>	<b>21%</b>	<b>0%</b>	<b>100%</b>	<b>\$7,300.00</b>	<b>14.300</b>

2016-17 Industry Certification  
Cocoa High School

School	Program	CERT #	Assessment	Teacher of Record	School Grade	# Students Identified	# Participants	# In Progress	# Passing	# Failing	# Completing Participants	Funding Weights	Potential Funding \$	% Participants	% Passing	% Failing	% In Progress	% Completing Participants	Cost of Assessments & Test Prep Used	Potential Bonus FTE Calculation
CHS	Drafting	ADESK002	Autodesk - Certified User AutoCAD	Auxier	X	22	22	0	11	11	22	0.2	\$ 9,147.88	100%	50%	50%	0%	100%	\$920.00	2.200
CHS	Culinary Arts	FRALA001	SafeStaff Food Handler Certification	Knight		110	110	0	110	0	110	0	\$ -	100%	100%	0%	0%	100%	\$0.00	0.000
CHS	Culinary Arts	NRAEF003	ServSafe Manager	Knight	X	25	25	0	6	19	25	0.2	\$ 4,989.75	100%	24%	76%	0%	100%	\$1,939.30	1.200
CHS	Health Science	NATHA003	CMAA	Mannes	X	14	14	0	8	6	14	0.1	\$ 3,326.50	100%	57%	43%	0%	100%	\$2,040.00	0.800
CHS	Health Science		CPR/AED/BLS for Healthcare Providers	Mannes		14	14	0	14	0	14	0	\$ -	100%	100%	0%	0%	100%	\$56.00	0.000
CHS	Accounting	INTUIT001	Intuit: Quick Books	Ocker	X	26	26	0	1	25	26	0.2	\$ 831.63	100%	4%	96%	0%	100%	\$960.00	0.200
CHS	Digital Info Tech	ADOBE022	Adobe: Photoshop	Ocker	X	1	1	0	0	1	1	0.1	\$ -	100%	0%	100%	0%	100%	\$191.43	0.000
CHS	Digital Info Tech	MICRO069	MOS Bundle	Ocker	X	8	8	0	8	0	8	0.2	\$ 6,653.00	100%	100%	0%	0%	100%	\$1,531.43	1.600
CHS	Web Development	ADOBE010	Adobe: Dreamweaver	Ocker	X	14	14	0	2	12	14	0.2	\$ 1,663.25	100%	14%	86%	0%	100%	\$560.00	0.400
CHS	Web Development	ADOBE011	Adobe: Flash	Ocker	X	1	1	0	0	1	1	0.2	\$ -	100%	0%	100%	0%	100%	\$40.00	0.000
CHS	Automotive Collision	FLADA001	FLADA	Riffe	X	36	36	0	8	28	36	0.1	\$ 3,326.50	100%	22%	78%	0%	100%	\$3,334.71	0.800
CHS	Digital Design	ADOBE020	Adobe: Illustrator	Thomas	X	4	4	0	0	4	4	0.1	\$ -	100%	0%	100%	0%	100%	\$297.25	0.000
CHS	Digital Design	ADOBE021	Adobe: InDesign	Thomas	X	11	11	0	0	11	11	0.1	\$ -	100%	0%	100%	0%	100%	\$817.44	0.000
CHS	Digital Design	ADOBE022	Adobe: Photoshop	Thomas	X	17	17	0	5	12	17	0.1	\$ 2,079.06	100%	29%	71%	0%	100%	\$1,263.31	0.500
CHS	Digital Info Tech	ADOBE022	Adobe: Photoshop	Thomas	X	2	2	0	0	2	2	0.1	\$ -	100%	0%	100%	0%	100%	\$382.86	0.000
CHS	Digital Info Tech	MICRO017	MS Office Master	Thomas	X	1	1	0	1	0	1	0.2	\$ 831.63	100%	100%	0%	0%	100%	\$191.43	0.200
CHS	Digital Info Tech	MICRO069	MOS Bundle	Thomas	X	16	16	0	16	0	16	0.2	\$ 13,306.01	100%	100%	0%	0%	100%	\$3,062.86	3.200
<b>School Total:</b>						<b>322</b>	<b>322</b>	<b>0</b>	<b>190</b>	<b>132</b>	<b>322</b>		<b>\$ 46,155.21</b>	<b>100.0%</b>	<b>59.0%</b>	<b>41.0%</b>	<b>0%</b>	<b>100%</b>	<b>\$17,588.01</b>	<b>11.100</b>

2016-17 Industry Certification  
Eau Gallie High School

School	Program		Assessment	Teacher of Record	School Grade	# Students Identified	# Participants	# In Progress	# Passing	# Failing	# Completing Participants	Funding Weights	Potential Funding \$	% Participants	% Passing	% Failing	% In Progress	% Completing Participants	Cost of Assessments & Test Prep Used	Potential Bonus FTE Calculation
EGHS	Digital Info Tech	MICRO069	MOS Bundle	Barton	X	3	3	0	3	0	3	0.2	\$ 2,494.88	100%	100%	0%	0%	100%	\$2,197.50	0.6
EGHS	Digital Info Tech	ADOBE020	Adobe: Illustrator	Barton	X	1	1	0	1	0	1	0.1	\$ 415.81	100%	100%	0%	0%	100%	\$732.50	0.1
EGHS	Bus Software App	MICRO069	MOS Bundle	Barton	X	1	1	0	1	0	1	0.2	\$ 831.63	100%	100%	0%	0%	100%	\$732.50	0.2
EGHS	Bus Software App	ADOBE022	Adobe: Photoshop	Barton	X	1	1	0	1	0	1	0.1	\$ 415.81	100%	100%	0%	0%	100%	\$732.50	0.1
EGHS	Early Childhood Ed	CPREC001	National CDA	Dilger	X	2	2	0	2	0	2	0.2	\$ 1,663.25	100%	100%	0%	0%	100%	\$850.00	0.4
EGHS	Early Childhood Ed	FLDCF004	Intro to Childcare Training Certificate	Dilger		15	15	0	14	1	15	0	\$ -	100%	93%	7%	0%	100%	\$0.00	0.0
EGHS	Early Childhood Ed	FLDCF005	Staff Credential	Dilger		15	15	0	15	0	15	0	\$ -	100%	100%	0%	0%	100%	\$150.00	0.0
EGHS	Early Childhood Ed		CPR/First Aid	Dilger		15	15	0	15	0	15	0	\$ -	100%	100%	0%	0%	100%	\$60.00	0.0
EGHS	Digital Design	ADESK002	Autodesk - Certified User AutoCAD	Keener	X	1	1	0	0	1	1	0.2	\$ -	100%	0%	100%	0%	100%	\$35.26	0.0
EGHS	Digital Design	ADOBE007	Adobe Certified Expert (ACE) - Premiere Pro	Keener	X	1	1	0	1	0	1	0.1	\$ 415.81	100%	100%	0%	0%	100%	\$35.26	0.1
EGHS	Digital Design	ADOBE018	Adobe: Premiere Pro	Keener	X	5	5	0	0	5	5	0.1	\$ -	100%	0%	100%	0%	100%	\$176.29	0.0
EGHS	Digital Design	ADOBE020	Adobe: Illustrator	Keener	X	6	6	0	1	5	6	0.1	\$ 415.81	100%	17%	83%	0%	100%	\$211.55	0.1
EGHS	Digital Design	ADOBE021	Adobe: InDesign	Keener	X	7	7	0	3	4	7	0.1	\$ 1,247.44	100%	43%	57%	0%	100%	\$246.81	0.3
EGHS	Digital Design	ADOBE022	Adobe: Photoshop	Keener	X	1	1	0	1	0	1	0.1	\$ 415.81	100%	100%	0%	0%	100%	\$35.26	0.1
EGHS	Digital Media/MM	ADOBE018	Adobe: Premiere Pro	Keener	X	24	24	0	6	18	24	0.1	\$ 2,494.88	100%	25%	75%	0%	100%	\$846.21	0.6
EGHS	Digital Media/MM	ADOBE020	Adobe: Illustrator	Keener	X	35	35	0	6	29	35	0.1	\$ 2,494.88	100%	17%	83%	0%	100%	\$1,234.05	0.6
EGHS	Digital Media/MM	ADOBE021	Adobe: InDesign	Keener	X	6	6	0	2	4	6	0.1	\$ 831.63	100%	33%	67%	0%	100%	\$211.55	0.2
EGHS	Digital Media/MM	ADOBE022	Adobe: Photoshop	Keener	X	83	83	0	25	58	83	0.1	\$ 10,395.32	100%	30%	70%	0%	100%	\$2,926.47	2.5
EGHS	Technical Design	ADESK002	Autodesk - Certified User AutoCAD	Lustic	X	31	31	0	15	16	31	0.2	\$ 12,474.38	100%	48%	52%	0%	100%	\$1,063.30	3.0
EGHS	Technical Design	ADESK008	Autodesk - Certified User Revit	Lustic	X	10	10	0	10	0	10	0.2	\$ 8,316.25	100%	100%	0%	0%	100%	\$343.00	2.0
EGHS	Technical Design	ADESK011	Autodesk - Certified User Inventor	Lustic	X	9	9	0	3	6	9	0.2	\$ 2,494.88	100%	33%	67%	0%	100%	\$308.70	0.6
EGHS	Aviation	FEDAA013	FAA Ground School	McInnish	X	30	30	0	30	0	30	0.2	\$ 24,948.76	100%	100%	0%	0%	100%	\$1,750.00	6.0
EGHS	Health Science	NATHA003	CMAA	McMahon	X	17	17	0	17	0	17	0.1	\$ 7,068.82	100%	100%	0%	0%	100%	\$3,400.00	1.7
EGHS	Health Science		CPR/AED/BLS for Healthcare Providers	McMahon		23	23	0	23	0	23	0	\$ -	100%	100%	0%	0%	100%	\$92.00	0.0
EGHS	Marine Tech	FLADA001	FLADA	Reeder	X	15	15	0	11	4	15	0.1	\$ 4,573.94	100%	73%	27%	0%	100%	\$2,325.55	1.1
EGHS	Automotive Service Tech	FLADA001	FLADA	Younger	X	20	20	0	13	7	20	0.1	\$ 5,405.56	100%	65%	35%	0%	100%	\$2,394.00	1.3
EGHS	AICE Art	ADOBE022	Adobe: Photoshop	Zink	X	5	5	0	0	5	5	0.1	\$ -	100%	0%	100%	0%	100%	\$176.29	0.0
													\$ -							
<b>School Total:</b>						<b>382</b>	<b>382</b>	<b>0</b>	<b>219</b>	<b>163</b>	<b>382</b>		<b>\$ 89,815.54</b>	<b>100.0%</b>	<b>57.3%</b>	<b>42.7%</b>	<b>0%</b>	<b>100%</b>	<b>\$23,266.55</b>	<b>21.6</b>

2016-17 Industry Certification  
Edgewood Jr./Sr. High  
School

School	Program	CERT #	Assessment	Teacher of Record	School Grade	# Students Identified	# Participants	# In Progress	# Passing	# Failing	# Completing Participants	Funding Weights	Potential Funding \$	% Participants	% Passing	% Failing	% In Progress	% Completing Participants	Cost of Assessments & Test Prep Used	Potential Bonus FTE Calculation
EHS	TV Production	AVIDT001	AVID Media Composer	Kyzer	X	25	25	0	25	0	25	0.1	\$ 10,395.32	100%	100%	0%	0%	100%	\$1,675.00	2.5
EHS	Digital Design	ADOBE020	Adobe: Illustrator	Vickers	X	41	41	0	21	20	41	0.1	\$ 8,732.07	100%	51%	49%	0%	100%	\$875.79	2.1
EHS	Digital Design	ADOBE021	Adobe: InDesign	Vickers	X	46	46	0	37	9	46	0.1	\$ 15,385.07	100%	80%	20%	0%	100%	\$982.59	3.7
EHS	Digital Design	ADOBE022	Adobe: Photoshop	Vickers	X	43	43	0	31	12	43	0.1	\$ 12,890.19	100%	72%	28%	0%	100%	\$918.51	3.1
													\$ -							
<b>School Total:</b>						<b>155</b>	<b>155</b>	<b>0</b>	<b>114</b>	<b>41</b>	<b>155</b>		<b>\$ 47,402.65</b>	<b>100.0%</b>	<b>73.5%</b>	<b>26.5%</b>	<b>0%</b>	<b>100%</b>	<b>\$4,451.89</b>	<b>11.4</b>

2016-17 Industry Certification  
Heritage High School

School	Program	CERT #	Assessment	Teacher of Record	School Grade	# Students Identified	# Participants	# In Progress	# Passing	# Failing	# Completing Participants	Funding Weights	Potential Funding \$	% Participants	% Passing	% Failing	% In Progress	% Completing Participants	Cost of Assessments & Test Prep Used	Potential Bonus FTE Calculation
HHS	Automotive Service Tech	FLADA001	FLADA	Broud	X	27	27	0	13	14	27	0.1	\$ 5,405.56	100%	48%	52%	0%	100%	\$3,362.72	1.3
HHS	Automotive Service Tech	NIASE076	Maintenance & Light Repair, G-1	Broud	X	1	1	0	1	0	1	0.2	\$ 831.63	100%	100%	0%	0%	100%	\$124.55	0.2
HHS	Digital Info Tech	MICRO069	MOS Bundle	Degginger	X	5	5	0	5	0	5	0.2	\$ 4,158.13	100%	100%	0%	0%	100%	\$534.63	1.0
HHS	Food Science	NRAEF003	ServSafe Manager	Ebersbach	X	53	53	0	7	46	53	0.2	\$ 5,821.38	100%	13%	87%	0%	100%	\$342.50	1.4
HHS	Health Science	NATHA003	CMAA	Luna	X	88	88	0	61	27	88	0.1	\$ 25,364.57	100%	69%	31%	0%	100%	\$8,925.00	6.1
HHS	Health Science		CPR/AED/BLS for Healthcare Providers	Luna		46	46	0	46	0	46	0	\$ -	100%	100%	0%	0%	100%	\$129.74	0.0
HHS	Health Science		CPR/AED/BLS for Healthcare Providers	Luna		82	82	0	82	0	82	0	\$ -	100%	100%	0%	0%	100%	\$231.28	0.0
HHS	Interior Design	CARCH002	Chief Architect	Pallo	X	5	5	0	4	1	5	0.2	\$ 3,326.50	100%	80%	20%	0%	100%	\$270.00	0.8
HHS	Drafting	ADESK002	Autodesk - Certified User AutoCAD	Pallo	X	19	19	0	5	14	19	0.2	\$ 4,158.13	100%	26%	74%	0%	100%	\$1,282.50	1.0
HHS	Drafting	MICRO069	MOS Bundle	Pallo	X	1	1	0	0	1	1	0.2	\$ -	100%	0%	100%	0%	100%	\$67.50	0.0
HHS	Bus Software App	MICRO069	MOS Bundle	Payne	X	26	26	0	24	2	26	0.2	\$ 19,959.01	100%	92%	8%	0%	100%	\$2,780.06	4.8
HHS	Digital Info Tech	MICRO069	MOS Bundle	Payne	X	47	47	0	39	8	47	0.2	\$ 32,433.39	100%	83%	17%	0%	100%	\$5,025.49	7.8
HHS	Digital Media/MM	ADOBE022	Adobe: Photoshop	Stengel	X	42	42	0	8	34	42	0.1	\$ 3,326.50	100%	19%	81%	0%	100%	\$4,490.86	0.8
HHS	Digital Info Tech	MICRO069	MOS Bundle	Stengel	X	26	26	0	26	0	26	0.2	\$ 21,622.26	100%	100%	0%	0%	100%	\$2,780.06	5.2
HHS	Medical Admin Specialist	NATHA003	CMAA	Trotman	X	28	28	0	24	4	28	0.1	\$ 9,979.50	100%	86%	14%	0%	100%	\$2,993.91	2.4
HHS	Medical Admin Specialist		CPR/AED/BLS for Healthcare Providers	Trotman		28	28	0	28	0	28	0	\$ -	100%	100%	0%	0%	100%	\$78.97	0.0
HHS	Tech Support - Client	MICRO102	Microsoft - MTA Mobility & Devices	Trotman	X	10	10	0	2	8	10	0.1	\$ 831.63	100%	20%	80%	0%	100%	\$440.00	0.2
HHS	Environmental Water	FLDEP003	Wastewater Treatment Plant Oper C	Vahlshing	X	14	14	0	4	10	14	0.1	\$ 1,663.25	100%	29%	71%	0%	100%	\$1,400.00	0.4
HHS	Environmental Water	FLDEP006	Water Treat Plant Oper Lvl C	Vahlshing	X	24	24	0	13	11	24	0.1	\$ 5,405.56	100%	54%	46%	0%	100%	\$2,400.00	1.3
HHS	Advanced Manufacturing	SOLID003	Solidworks	Verdin	X	14	14	0	2	12	14	0.2	\$ 1,663.25	100%	14%	86%	0%	100%	\$275.00	0.4
													\$ -							
<b>School Total:</b>						<b>586</b>	<b>586</b>	<b>0</b>	<b>394</b>	<b>192</b>	<b>586</b>		<b>\$ 145,950.25</b>	<b>100.0%</b>	<b>67.2%</b>	<b>32.8%</b>	<b>0%</b>	<b>100%</b>	<b>\$37,934.77</b>	<b>35.1</b>

2016-17 Industry Certification  
Melbourne High School

School	Program	CERT #	Assessment	Teacher of Record	School Grade	# Students Identified	# Participants	# In Progress	# Passing	# Failing	# Completing Participants	Funding Weights	Potential Funding \$	% Participants	% Passing	% Failing	% In Progress	% Completing Participants	Cost of Assessments & Test Prep Used	Potential Bonus FTE Calculation
MHS	Web Development	ADOBE010	Adobe: Dreamweaver	Angove	X	21	21	0	10	11	21	0.2	\$ 8,316.25	100%	48%	52%	0%	100%	\$1,058.94	2.0
MHS	Web Development	ADOBE011	Adobe: Flash	Angove	X	17	17	0	10	7	17	0.2	\$ 8,316.25	100%	59%	41%	0%	100%	\$857.23	2.0
MHS	Web Development	ADOBE018	Adobe: Premiere Pro	Angove	X	1	1	0	0	1	1	0.1	\$ -	100%	0%	100%	0%	100%	\$50.43	0.0
MHS	Web Development	ADOBE020	Adobe: Illustrator	Angove	X	1	1	0	0	1	1	0.1	\$ -	100%	0%	100%	0%	100%	\$50.43	0.0
MHS	Web Development	ADOBE022	Adobe: Photoshop	Angove	X	7	7	0	3	4	7	0.1	\$ 1,247.44	100%	43%	57%	0%	100%	\$352.98	0.3
MHS	Digital Info Tech	MICRO069	MOS Bundle	Angove	X	19	19	0	19	0	19	0.2	\$ 15,800.88	100%	100%	0%	0%	100%	\$2,081.12	3.8
MHS	Finance Academy	MICRO069	MOS Bundle	Angove	X	1	1	0	1	0	1	0.2	\$ 831.63	100%	100%	0%	0%	100%	\$54.55	0.2
MHS	Digital Design	ADOBE021	Adobe: InDesign	Fannon	X	16	16	0	10	6	16	0.1	\$ 4,158.13	100%	63%	38%	0%	100%	\$665.60	1.0
MHS	Digital Design	ADOBE022	Adobe: Photoshop	Fannon	X	84	84	0	40	44	84	0.1	\$ 16,632.51	100%	48%	52%	0%	100%	\$3,494.40	4.0
MHS	Finance Academy	INTUIT001	Intuit: Quick Books	Fannon	X	18	18	0	5	13	18	0.2	\$ 4,158.13	100%	28%	72%	0%	100%	\$981.85	1.0
MHS	Finance Academy	MICRO069	MOS Bundle	Fannon	X	15	15	0	15	0	15	0.2	\$ 12,474.38	100%	100%	0%	0%	100%	\$818.20	3.0
MHS	Culinary Arts	FRALA001	SafeStaff Food Handler Certification	Ferguson		55	55	0	55	0	55	0.0	\$ -	100%	100%	0%	0%	100%	\$171.11	0.0
MHS	Culinary Arts	NRAEF003	ServSafe Manager	Ferguson	X	43	43	0	31	12	43	0.2	\$ 25,780.39	100%	72%	28%	0%	100%	\$4,774.94	6.2
MHS	Engineering Technology	SOLID003	Solidworks	Gabeler	X	50	50	0	40	10	50	0.2	\$ 33,265.02	100%	80%	20%	0%	100%	\$3,318.00	8.0
MHS	Emergency Medical Responder	IEMSR001	EMR	Krug	X	22	22	0	8	14	22	0.1	\$ 3,326.50	100%	36%	64%	0%	100%	\$2,300.00	0.8
MHS	Patient Care Assisting	FDMQA002	C N A	Krug	X	14	14	0	14	0	14	0.1	\$ 5,821.38	100%	100%	0%	0%	100%	\$2,170.00	1.4
THS	Patient Care Assisting		CPR/AED/BLS for Healthcare Providers	Krug		14	14	0	14	0	14	0.0	\$ -	100%	100%	0%	0%	100%	\$56.00	0.0
THS	Health Science		CPR/AED/BLS for Healthcare Providers	Krug		109	109	0	109	0	109	0.0	\$ -	100%	100%	0%	0%	100%	\$436.00	0.0
MHS	Culinary Arts	FRALA001	SafeStaff Food Handler Certification	Ollinger		80	80	0	80	0	80	0.0	\$ -	100%	100%	0%	0%	100%	\$248.89	0.0
MHS	Food Science	NRAEF003	ServSafe Manager	Ollinger	X	21	21	0	21	0	21	0.2	\$ 17,464.13	100%	100%	0%	0%	100%	\$813.44	4.2
MHS	Fashion Design Services	NOCTI003	NOCTI - Apparel & Text Prod & Mer	Schmidt		8	8	0	5	3	8	0.0	\$ -	100%	63%	38%	0%	100%	\$220.00	0.0
MHS	Digital Info Tech	MICRO069	MOS Bundle	Uhing	X	88	88	0	88	0	88	0.2	\$ 73,183.03	100%	100%	0%	0%	100%	\$9,638.88	17.6
MHS	Finance Academy	MICRO069	MOS Bundle	Uhing	X	18	18	0	18	0	18	0.2	\$ 14,969.26	100%	100%	0%	0%	100%	\$981.85	3.6
MHS	Finance Academy	MICRO017	MS Office Master	Uhing	X	1	1	0	1	0	1	0.2	\$ 831.63	100%	100%	0%	0%	100%	\$54.55	0.2
													\$ -							
<b>School Total:</b>						<b>723</b>	<b>723</b>	<b>0</b>	<b>597</b>	<b>126</b>	<b>723</b>		<b>\$ 246,576.93</b>	<b>100.0%</b>	<b>82.6%</b>	<b>17.4%</b>	<b>0.0%</b>	<b>100.0%</b>	<b>\$ 35,649.37</b>	<b>59.3</b>



2016-17 Industry Certification

Merritt Island High School

School	Program	Cert #	Assessment	Teacher of Record	School Grade	# Students Identified	# Participants	# In Progress	# Passing	# Failing	# Completing Participants	Funding Weights	Potential Funding \$	% Participants	% Passing	% Failing	% In Progress	% Completing Participants	Cost of Assessments & Test Prep Used	Potential Bonus FTE Calculation
MIHS	Bus Software App	MICRO069	MOS Bundle	Burr	X	14	14	0	14	0	14	0.2	\$ 11,642.76	100%	100%	0%	0%	100%	\$1,766.22	2.8
MIHS	Digital Info Tech	MICRO069	MOS Bundle	Burr	X	18	18	0	18	0	18	0.2	\$ 14,969.26	100%	100%	0%	0%	100%	\$2,270.85	3.6
MIHS	Food Science	NRAEF003	ServSafe Manager	Cheshire	X	11	11	0	7	4	11	0.2	\$ 5,821.38	100%	64%	36%	0%	100%	\$1,616.08	1.4
MIHS	Web Development	ADOBE010	Adobe: Dreamweaver	Erickson	X	34	34	0	34	0	34	0.2	\$ 28,275.26	100%	100%	0%	0%	100%	\$2,458.20	6.8
MIHS	Web Development	ADOBE011	Adobe: Flash	Erickson	X	16	16	0	16	0	16	0.2	\$ 13,306.01	100%	100%	0%	0%	100%	\$1,156.80	3.2
MIHS	Digital Design	ADOBE010	Adobe: Dreamweaver	Forbes	X	1	1	0	1	0	1	0.2	\$ 831.63	100%	100%	0%	0%	100%	\$37.14	0.2
MIHS	Digital Design	ADOBE018	Adobe: Premiere Pro	Forbes	X	6	6	0	6	0	6	0.1	\$ 2,494.88	100%	100%	0%	0%	100%	\$222.83	0.6
MIHS	Digital Design	ADOBE020	Adobe: Illustrator	Forbes	X	18	18	0	18	0	18	0.1	\$ 7,484.63	100%	100%	0%	0%	100%	\$668.49	1.8
MIHS	Digital Design	ADOBE021	Adobe: InDesign	Forbes	X	35	35	0	34	1	35	0.1	\$ 14,137.63	100%	97%	3%	0%	100%	\$1,299.85	3.4
MIHS	Digital Design	ADOBE022	Adobe: Photoshop	Forbes	X	23	23	0	22	1	23	0.1	\$ 9,147.88	100%	96%	4%	0%	100%	\$854.19	2.2
MIHS	Hosp & Tourism	ADOBE022	Adobe: Photoshop	Little	X	13	13	0	2	11	13	0.1	\$ 831.63	100%	15%	85%	0%	100%	\$223.07	0.2
MIHS	Hosp & Tourism	MICRO069	MOS Bundle	Little	X	7	7	0	7	0	7	0.2	\$ 5,821.38	100%	100%	0%	0%	100%	\$120.11	1.4
MIHS	Marketing Management	ADESK011	Autodesk - Certified User Inventor	Little	X	1	1	0	1	0	1	0.2	\$ 831.63	100%	100%	0%	0%	100%	\$17.16	0.2
MIHS	Marketing Management	ADOBE020	Adobe: Illustrator	Little	X	1	1	0	1	0	1	0.1	\$ 415.81	100%	100%	0%	0%	100%	\$17.16	0.1
MIHS	Marketing Management	ADOBE021	Adobe: InDesign	Little	X	7	7	0	5	2	7	0.1	\$ 2,079.06	100%	71%	29%	0%	100%	\$120.11	0.5
MIHS	Marketing Management	ADOBE022	Adobe: Photoshop	Little	X	11	11	0	2	9	11	0.1	\$ 831.63	100%	18%	82%	0%	100%	\$188.75	0.2
MIHS	Marketing Management	MICRO069	MOS Bundle	Little	X	4	4	0	3	1	4	0.2	\$ 2,494.88	100%	75%	25%	0%	100%	\$68.64	0.6
MIHS	PLTW - ENGINEERING	ADESK011	Autodesk - Certified User Inventor	Parker	X	60	60	0	47	13	60	0.2	\$ 39,086.39	100%	78%	22%	0%	100%	\$3,860.00	9.4
MIHS	Early Childhood Ed	CPREC001	National CDA	Pearlman	X	3	3	0	3	0	3	0.2	\$ 2,494.88	100%	100%	0%	0%	100%	\$1,275.00	0.6
MIHS	Early Childhood Ed	FLDCF004	Intro to Childcare Training Certificate	Pearlman		12	12	0	12	0	12	0	\$ -	100%	100%	0%	0%	100%	\$0.00	0.0
MIHS	Early Childhood Ed	FLDCF005	Staff Credential	Pearlman		12	12	0	12	0	12	0	\$ -	100%	100%	0%	0%	100%	\$120.00	0.0
MIHS	Early Childhood Ed		CPR/First Aid	Pearlman		12	12	0	12	0	12	0	\$ -	100%	100%	0%	0%	100%	\$120.00	0.0
MIHS	Automotive Service Tech	FLADA001	FLADA	Simpson	X	19	19	0	10	9	19	0.1	\$ 4,158.13	100%	53%	47%	0%	100%	\$1,706.13	1.0
													\$ -							
<b>School Total:</b>						<b>338</b>	<b>338</b>	<b>0</b>	<b>287</b>	<b>51</b>	<b>338</b>		<b>\$ 167,156.70</b>	<b>100.0%</b>	<b>84.9%</b>	<b>15.1%</b>	<b>0%</b>	<b>100%</b>	<b>\$20,186.78</b>	<b>40.2</b>

2016-17 Industry Certification

Palm Bay Magnet School

School	Program	Cert #	Assessment	Teacher of Record	School Grade	# Students Identified	# Participants	# In Progress	# Passing	# Failing	# Completing Participants	Funding Weights	Potential Funding \$	% Participants	% Passing	% Failing	% In Progress	% Completing Participants	Cost of Assessments & Test Prep Used	Potential Bonus FTE Calculation
PBMS	Technical Design	ADESK002	Autodesk - Certified User AutoCAD	Allen, D	X	4	4	0	0	4	4	0.2	\$ -	100%	0%	100%	0%	100%	\$137.22	0.0
PBMS	Technical Design	ADESK008	Autodesk - Certified User Revit	Allen, D	X	17	17	0	7	10	17	0.2	\$ 5,821.38	100%	41%	59%	0%	100%	\$583.19	1.4
PBMS	Technical Design	ADESK011	Autodesk - Certified User Inventor	Allen, D	X	15	15	0	14	1	15	0.2	\$ 11,642.76	100%	93%	7%	0%	100%	\$514.58	2.8
PBMS	Engineering Technology	ADESK008	Autodesk - Certified User Revit	Allen, D	X	1	1	0	1	0	1	0.2	\$ 831.63	100%	100%	0%	0%	100%	\$7.86	0.2
PBMS	Engineering Technology	SOLID003	Solidworks	Allen, R	X	34	34	0	14	20	34	0.2	\$ 11,642.76	100%	41%	59%	0%	100%	\$267.14	2.8
PBMS	Fashion Design Services	NOCTI003	NOCTI - Apparel & Text Prod & Mer	Baker		16	16	0	15	1	16	0	\$ -	100%	94%	6%	0%	100%	\$612.00	0.0
PBMS	Patient Care Assisting	FDMQA002	C N A	Bassile	X	12	12	0	11	2	13	0.1	\$ 4,573.94	100%	85%	15%	0%	108%	\$1,860.00	1.1
PBMS	Patient Care Assisting		CPR/AED/BLS for Healthcare Providers	Bassile		12	12	0	12	0	12	0	\$ -	100%	100%	0%	0%	100%	\$120.00	0.0
PBMS	Health Science		CPR/AED/BLS for Healthcare Providers	Bassile		51	51	0	51	0	51	0	\$ -	100%	100%	0%	0%	100%	\$510.00	0.0
PBMS	Early Childhood Ed	FLDCF004	Intro to Childcare Training Certificate	Chappell		8	8	0	6	2	8	0	\$ -	100%	75%	25%	0%	100%	\$0.00	0.0
PBMS	Early Childhood Ed	FLDCF005	Staff Credential	Chappell		8	8	0	8	0	8	0	\$ -	100%	100%	0%	0%	100%	\$80.00	0.0
PBMS	Early Childhood Ed		CPR/First Aid	Chappell		8	8	0	8	0	8	0	\$ -	100%	100%	0%	0%	100%	\$80.00	0.0
PBMS	Early Childhood Ed	CPREC001	National CDA	Chappell	X	6	6	0	5	1	6	0.2	\$ 4,158.13	100%	83%	17%	0%	100%	\$2,550.00	1.0
PBMS	Digital Media/MM	ADOBE022	Adobe: Photoshop	Fine	X	46	46	0	3	43	46	0.1	\$ 1,247.44	100%	7%	93%	0%	100%	\$2,815.00	0.3
PBMS	Culinary Arts	FRALA001	SafeStaff Food Handler Certification	Ho		60	60	0	60	0	60	0	\$ -	100%	100%	0%	0%	100%	\$0.00	0.0
PBMS	Culinary Arts	NRAEF002	ProStart Certificate of Achievement	Ho	X	2	2	0	2	0	2	0.2	\$ 1,663.25	100%	100%	0%	0%	100%	\$99.89	0.4
PBMS	Culinary Arts	NRAEF003	ServSafe Manager	Ho	X	31	31	0	27	4	31	0.2	\$ 22,453.89	100%	87%	13%	0%	100%	\$1,548.36	5.4
PBMS	Criminal Justice	NOCTI010	NOCTI - Criminal Justice	Morrison		22	22	0	21	1	22	0	\$ -	100%	95%	5%	0%	100%	\$484.00	0.0
PBMS	Web App Dev & Prog	MICRO080	Microsoft - MTA HTML5	Salvatore	X	1	1	0	1	0	1	0.2	\$ 831.63	100%	100%	0%	0%	100%	\$123.08	0.2
PBMS	Web App Dev & Prog	PROSO017	CIW - JavaScript Specialist	Salvatore	X	1	1	0	1	0	1	0.2	\$ 831.63	100%	100%	0%	0%	100%	\$123.08	0.2
PBMS	Web App Dev & Prog	PROSO020	CIW - Site Development Assoc	Salvatore	X	17	17	0	11	6	17	0.2	\$ 9,147.88	100%	65%	35%	0%	100%	\$2,092.31	2.2
PBMS	Web App Dev & Prog	PROSO027	CIW - Advanced HTML5 & CSS3 Spec	Salvatore	X	7	7	0	2	5	7	0.2	\$ 1,663.25	100%	29%	71%	0%	100%	\$861.54	0.4
PBMS	Game & Simulation	MICRO074	Microsoft - MTA Software Dev Fund	Vogt	X	46	46	0	1	45	46	0.1	\$ 415.81	100%	2%	98%	0%	100%	\$706.14	0.1
PBMS	Game & Simulation	MICRO080	Microsoft - MTA HTML5	Vogt	X	68	68	0	4	65	69	0.2	\$ 3,326.50	100%	6%	94%	0%	101%	\$1,043.86	0.8
													\$ -							
<b>School Total:</b>						<b>493</b>	<b>493</b>	<b>0</b>	<b>285</b>	<b>210</b>	<b>495</b>		<b>\$ 80,251.85</b>	<b>100%</b>	<b>57.6%</b>	<b>42.4%</b>	<b>0.0%</b>	<b>100%</b>	<b>\$17,219.25</b>	<b>19.3</b>

2016-17 Industry Certification  
Rockledge High School

School	Program	Cert #	Assessment	Teacher of Record	School Grade	# Students Identified	# Participants	# In Progress	# Passing	# Failing	# Completing Participants	Funding Weights	Potential Funding \$	% Participants	% Passing	% Failing	% In Progress	% Completing Participants	Cost of Assessments & Test Prep Used	Potential Bonus FTE Calculation
RHS	Patient Care Assisting	FDMQA002	C N A	Byczek	X	12	12	0	11	1	12	0.1	\$ 4,573.94	100%	92%	8%	0%	100%	\$1,860.00	1.1
RHS	Patient Care Assisting		CPR/AED/BLS for Healthcare Providers	Byczek		69	69	0	69	0	69	0	\$ -	100%	100%	0%	0%	100%	\$276.00	0.0
RHS	Patient Care Assisting		AHA First Aid	Byczek		52	52	0	52	0	52	0	\$ -	100%	100%	0%	0%	100%	\$208.00	0.0
RHS	Criminal Justice	TAFPL001	ALP	Harrigan	X	9	9		4	5	9	0.2	\$ 3,326.50	100%	44%	56%	0%	100%	\$399.91	0.8
RHS	Hosp & Tourism	ADOBE022	Adobe: Photoshop	Kearns	X	22	22	0	15	7	22	0.1	\$ 6,237.19	100%	68%	32%	0%	100%	\$915.20	1.5
RHS	Hosp & Tourism	MICRO069	MOS Bundle	Kearns	X	28	28	0	25	3	28	0.2	\$ 20,790.63	100%	89%	11%	0%	100%	\$1,164.80	5.0
RHS	Fashion Design Services	NOCTI003	NOCTI - Apparel & Text Prod & Mer	Pingston		2	2	0	2	0	2	0	\$ -	100%	100%	0%	0%	100%	\$44.00	0.0
RHS	Technical Design	ADESK002	Autodesk - Certified User AutoCAD	Schooley	X	25	25	0	24	1	25	0.2	\$ 19,959.01	100%	96%	4%	0%	100%	\$962.96	4.8
RHS	Technical Design	ADESK011	Autodesk - Certified User Inventor	Schooley	X	2	2	0	2	0	2	0.2	\$ 1,663.25	100%	100%	0%	0%	100%	\$77.04	0.4
RHS	Automotive Service Tech	FLADA001	FLADA	Sebetka	X	30	30	0	23	7	30	0.1	\$ 9,563.69	100%	77%	23%	0%	100%	\$3,102.06	2.3
RHS	Digital Design	ADOBE020	Adobe: Illustrator	Shinault	X	9	9	0	9	0	9	0.1	\$ 3,742.31	100%	100%	0%	0%	100%	\$450.30	0.9
RHS	Digital Design	ADOBE021	Adobe: InDesign	Shinault	X	42	42	0	24	18	42	0.1	\$ 9,979.50	100%	57%	43%	0%	100%	\$2,101.41	2.4
RHS	Digital Design	ADOBE022	Adobe: Photoshop	Shinault	X	98	98	0	69	29	98	0.1	\$ 28,691.08	100%	70%	30%	0%	100%	\$4,903.29	6.9
RHS	Criminal Justice	NOCTI010	NOCTI - Criminal Justice	Tardiff		14	14	0	13	1	14	0	\$ -	100%	93%	7%	0%	100%	\$622.09	0.0
													\$ -							
<b>School Total:</b>						<b>414</b>	<b>414</b>	<b>0</b>	<b>342</b>	<b>72</b>	<b>414</b>		<b>\$ 108,527.11</b>	<b>100.0%</b>	<b>82.6%</b>	<b>17.4%</b>	<b>0%</b>	<b>100%</b>	<b>\$17,087.06</b>	<b>26.1</b>

2016-17 Industry Certification  
Satellite High School

School	Program	Cert #	Assessment	Teacher of Record	School Grade	# Students Identified	# Participants	# In Progress	# Passing	# Failing	# Completing Participants	Funding Weights	Potential Funding \$	% Participants	% Passing	% Failing	% In Progress	% Completing Participants	Cost of Assessments & Test Prep Used	Potential Bonus FTE Calculation
SHS	Digital Media/MM	ADOBE018	Adobe: Premiere Pro	Brooks	X	1	1	0	1	0	1	0.1	\$ 415.81	100%	100%	0%	0%	100%	\$39.94	0.1
SHS	Digital Media/MM	ADOBE020	Adobe: Illustrator	Brooks	X	1	1	0	0	1	1	0.1	\$ -	100%	0%	100%	0%	100%	\$39.94	0.0
SHS	Digital Media/MM	ADOBE021	Adobe: InDesign	Brooks	X	1	1	0	1	0	1	0.1	\$ 415.81	100%	100%	0%	0%	100%	\$39.94	0.1
SHS	Digital Media/MM	ADOBE022	Adobe: Photoshop	Brooks	X	1	1	0	1	0	1	0.1	\$ 415.81	100%	100%	0%	0%	100%	\$39.94	0.1
SHS	Marketing Management	ADOBE021	Adobe: InDesign	Brooks	X	6	6	0	1	5	6	0.1	\$ 415.81	100%	17%	83%	0%	100%	\$240.00	0.1
SHS	Digital Info Tech	MICRO069	MOS Bundle	Brooks	X	4	4	0	4	0	4	0.2	\$ 3,326.50	100%	100%	0%	0%	100%	\$470.00	0.8
SHS	Bus Software App	MICRO069	MOS Bundle	Brooks	X	14	14	0	13	1	14	0.2	\$ 10,811.13	100%	93%	7%	0%	100%	\$1,645.00	2.6
SHS	Food Science	NRAEF003	ServSafe Manager	Doubek	X	9	9	0	0	9	9	0.2	\$ -	100%	0%	100%	0%	100%	\$808.04	0.0
SHS	Technical Design	ADESK002	Autodesk - Certified User AutoCAD	Galiszewski	X	25	25	0	24	1	25	0.2	\$ 19,959.01	100%	96%	4%	0%	100%	\$969.59	4.8
SHS	Technical Design	ADESK008	Autodesk - Certified User Revit	Galiszewski	X	5	5	0	4	1	5	0.2	\$ 3,326.50	100%	80%	20%	0%	100%	\$193.92	0.8
SHS	Technical Design	ADESK011	Autodesk - Certified User Inventor	Galiszewski	X	7	7	0	6	1	7	0.2	\$ 4,989.75	100%	86%	14%	0%	100%	\$271.49	1.2
SHS	Fashion Design Services	NOCTI003	NOCTI - Apparel & Text Prod & Mer	Gray		17	17	0	17	0	17	0	\$ -	100%	100%	0%	0%	100%	\$671.00	0.0
SHS	Automotive Service Tech	FLADA001	FLADA	Pitts	X	34	34	0	16	18	34	0.1	\$ 6,653.00	100%	47%	53%	0%	100%	\$3,824.01	1.6
SHS	Early Childhood Ed	FLDCF004	Intro to Childcare Training Certificate	Schmid		12	12	0	12	0	12	0	\$ -	100%	100%	0%	0%	100%	\$0.00	0.0
SHS	Early Childhood Ed	FLDCF005	Staff Credential	Schmid		12	12	0	12	0	12	0	\$ -	100%	100%	0%	0%	100%	\$120.00	0.0
SHS	Early Childhood Ed		CPR/First Aid	Schmid		12	12	0	12	0	12	0	\$ -	100%	100%	0%	0%	100%	\$48.00	0.0
SHS	Early Childhood Ed	CPREC001	National CDA	Schmid	X	2	2	0	2	0	2	0.2	\$ 1,663.25	100%	100%	0%	0%	100%	\$850.00	0.4
SHS	Digital Media/MM	ADOBE020	Adobe: Illustrator	Stratton	X	25	25	0	11	14	25	0.1	\$ 4,573.94	100%	44%	56%	0%	100%	\$998.53	1.1
SHS	Digital Media/MM	ADOBE021	Adobe: InDesign	Stratton	X	20	20	0	6	14	20	0.1	\$ 2,494.88	100%	30%	70%	0%	100%	\$798.82	0.6
SHS	Digital Media/MM	ADOBE022	Adobe: Photoshop	Stratton	X	36	36	0	18	18	36	0.1	\$ 7,484.63	100%	50%	50%	0%	100%	\$1,437.88	1.8
													\$ -							
<b>School Total:</b>						<b>244</b>	<b>244</b>	<b>0</b>	<b>161</b>	<b>83</b>	<b>244</b>		<b>\$ 66,945.84</b>	<b>100%</b>	<b>66.0%</b>	<b>34.0%</b>	<b>0%</b>	<b>100%</b>	<b>\$13,506.05</b>	<b>16.1</b>

2016-17 Industry Certification  
Space Coast Jr./Sr. High School

School	Program	Cert #	Assessment	Teacher of Record	School Grade	# Students Identified	# Participants	# In Progress	# Passing	# Failing	# Completing Participants	Funding Weights	Potential Funding \$	% Participants	% Passing	% Failing	% In Progress	% Completing Participants	Cost of Assessments & Test Prep Used	Potential Bonus FTE Calculation
SCHS	TV Production	AVIDT001	AVID Media Composer	Dietz	X	0	0	0	0	0	0	0.1	\$ -						\$1,675.00	0.000
SCHS	Drafting	ADESK002	Autodesk - Certified User AutoCAD	Gannon	X	26	26	0	26	0	26	0.2	\$ 21,622.26	100%	100%	0%	0%	100%	\$397.65	5.200
SCHS	Drafting	ADESK008	Autodesk - Certified User Revit	Gannon	X	23	23	0	23	0	23	0.2	\$ 19,127.38	100%	100%	0%	0%	100%	\$351.76	4.600
SCHS	Drafting	ADESK011	Autodesk - Certified User Inventor	Gannon	X	19	19	0	19	0	19	0.2	\$ 15,800.88	100%	100%	0%	0%	100%	\$290.59	3.800
SCHS	Food Science	NRAEF003	ServSafe Manager	Michell	X	13	13	0	1	12	13	0.2	\$ 831.63	100%	8%	92%	0%	100%	\$571.00	0.200
SCHS	A/C Refrig & Heat	HVACE002	HVAC Excellence - A/C	Mount	X	12	12	0	12	0	12	0.2	\$ 9,979.50	100%	100%	0%	0%	100%	\$1,523.95	2.400
SCHS	A/C Refrig & Heat	HVACE011	HVAC Excellence - Electrical	Mount	X	8	8	0	8	0	8	0.2	\$ 6,653.00	100%	100%	0%	0%	100%	\$1,015.97	1.600
SCHS	A/C Refrig & Heat	NATEX001	Air Conditioning Service Tech	Mount	X	1	1	0	1	0	1	0.2	\$ 831.63	100%	100%	0%	0%	100%	\$127.00	0.200
SCHS	A/C Refrig & Heat	NCCER018	NCCER	Mount	X	14	14	0	14	0	14	0.2	\$ 11,642.76	100%	100%	0%	0%	100%	\$1,777.94	2.800
SCHS	Engineering Technology	SOLID003	Solidworks	Reyes	X	17	17	0	16	1	17	0.2	\$ 13,306.01	100%	94%	6%	0%	100%	\$275.00	3.200
SCHS	Teacher Assisting	EDTSO001	ParaPro	Savaglio		15	15	0	13	2	15	0	\$ -	100%	87%	13%	0%	100%	\$825.00	0.000
SCHS	Bus Software App	MICRO017	MS Office Master	Stoppelbein	X	1	1	0	1	0	1	0.2	\$ 831.63	100%	100%	0%	0%	100%	\$142.00	0.200
SCHS	Bus Software App	MICRO069	MOS Bundle	Stoppelbein	X	13	13	0	13	0	13	0.2	\$ 10,811.13	100%	100%	0%	0%	100%	\$1,846.00	2.600
SCHS	Digital Info Tech	MICRO069	MOS Bundle	Stoppelbein	X	6	6	0	6	0	6	0.2	\$ 4,989.75	100%	100%	0%	0%	100%	\$852.00	1.200
<b>School Total:</b>						<b>168</b>	<b>168</b>	<b>0</b>	<b>153</b>	<b>15</b>	<b>168</b>		<b>\$ 116,427.55</b>	<b>100.0%</b>	<b>91.1%</b>	<b>8.9%</b>	<b>0%</b>	<b>100%</b>	<b>\$11,670.85</b>	<b>28.000</b>

2016-17 Industry Certification  
Titusville High School

School	Program	Cert #	Assessment	Teacher of Record	School Grade	# Students Identified	# Participants	# In Progress	# Passing	# Failing	# Completing Participants	Funding Weights	Potential Funding \$	% Participants	% Passing	% Failing	% In Progress	% Completing Participants	Cost of Assessments & Test Prep Used	Potential Bonus FTE Calculation
THS	Digital Design	ADOBE010	Adobe: Dreamweaver	Benson	X	1	1	0	1	0	1	0.2	\$ 831.63	100%	100%	0%	0%	100%	\$37.24	0.2
THS	Digital Design	ADOBE011	Adobe: Flash	Benson	X	10	10	0	8	2	10	0.2	\$ 6,653.00	100%	80%	20%	0%	100%	\$372.37	1.6
THS	Digital Design	ADOBE020	Adobe: Illustrator	Benson	X	32	32	0	27	5	32	0.1	\$ 11,226.94	100%	84%	16%	0%	100%	\$1,191.60	2.7
THS	Digital Design	ADOBE021	Adobe: InDesign	Benson	X	64	64	0	37	27	64	0.1	\$ 15,385.07	100%	58%	42%	0%	100%	\$2,383.20	3.7
THS	Digital Design	ADOBE022	Adobe: Photoshop	Benson	X	24	24	0	24	0	24	0.1	\$ 9,979.50	100%	100%	0%	0%	100%	\$893.70	2.4
THS	TV Production	AVIDT001	AVID Media Composer	Curtis	X	1	1	0	1	0	1	0.1	\$ 415.81	100%	100%	0%	0%	100%	\$1,400.00	0.1
THS	Web Development	ADOBE010	Adobe: Dreamweaver	Ely	X	20	20	0	19	1	20	0.2	\$ 15,800.88	100%	95%	5%	0%	100%	\$1,116.67	3.8
THS	Web Development	ADOBE011	Adobe: Flash	Ely	X	1	1	0	0	1	1	0.2	\$ -	100%	0%	100%	0%	100%	\$55.83	0.0
THS	Web Development	ADOBE021	Adobe: InDesign	Ely	X	1	1	0	1	1	2	0.1	\$ 415.81	100%	50%	50%	0%	200%	\$55.83	0.1
THS	Web Development	ADOBE022	Adobe: Photoshop	Ely	X	32	32	0	27	4	31	0.1	\$ 11,226.94	100%	87%	13%	0%	97%	\$1,786.67	2.7
THS	Digital Design	ADOBE020	Adobe: Illustrator	Ely	X	3	3	0	3	0	3	0.1	\$ 1,247.44	100%	100%	0%	0%	100%	\$111.71	0.3
THS	Digital Design	ADOBE021	Adobe: InDesign	Ely	X	7	7	0	6	1	7	0.1	\$ 2,494.88	100%	86%	14%	0%	100%	\$260.66	0.6
THS	Digital Design	ADOBE022	Adobe: Photoshop	Ely	X	29	29	0	25	4	29	0.1	\$ 10,395.32	100%	86%	14%	0%	100%	\$1,079.89	2.5
THS	Patient Care Assisting	FDMQA002	C N A	Hall	X	37	37	0	36	1	37	0.1	\$ 14,969.26	100%	97%	3%	0%	100%	\$5,890.00	3.6
THS	Patient Care Assisting		CPR/AED/BLS for Healthcare Providers	Hall		37	37	0	37	0	37	0	\$ -	100%	100%	0%	0%	100%	\$148.00	0.0
THS	Culinary Arts	FRALA001	SafeStaff Food Handler Certification	Hietpas		79	79	0	77	2	79	0	\$ -	100%	97%	3%	0%	100%	\$0.00	0.0
THS	Culinary Arts	NRAEF003	ServSafe Manager	Hietpas	X	51	51	0	36	15	51	0.2	\$ 29,938.51	100%	71%	29%	0%	100%	\$3,296.50	7.2
THS	Fashion Design Services	NOCTI003	NOCTI - Apparel & Text Prod & Mer	Lawrence		7	7	0	6	1	7	0	\$ -	100%	86%	14%	0%	100%	\$260.00	0.0
THS	Patient Care Assisting		CPR/AED/BLS for Healthcare Providers	Shimer		84	84	0	84	0	84	0	\$ -	100%	100%	0%	0%	100%	\$336.00	0.0
THS	Digital Design	ADOBE010	Adobe: Dreamweaver	Siems	X	1	1	0	1	0	1	0.2	\$ 831.63	100%	100%	0%	0%	100%	\$37.24	0.2
THS	Digital Design	ADOBE020	Adobe: Illustrator	Siems	X	1	1	0	1	0	1	0.1	\$ 415.81	100%	100%	0%	0%	100%	\$37.24	0.1
THS	Digital Design	ADOBE021	Adobe: InDesign	Siems	X	2	2	0	0	2	2	0.1	\$ -	100%	0%	100%	0%	100%	\$74.47	0.0
THS	Digital Design	ADOBE022	Adobe: Photoshop	Siems	X	45	45	0	28	17	45	0.1	\$ 11,642.76	100%	62%	38%	0%	100%	\$1,675.68	2.8
THS	Digital Info Tech	MICRO069	MOS Bundle	Siems	X	29	29	0	20	9	29	0.2	\$ 16,632.51	100%	69%	31%	0%	100%	\$1,263.26	4.0
THS	Automotive Service Tech	FLADA001	FLADA	Soros	X	17	17	0	14	3	17	0.1	\$ 5,821.38	100%	82%	18%	0%	100%	\$2,016.34	1.4
THS	Digital Info Tech	MICRO069	MOS Bundle	Summy-Brown	X	37	37	0	37	0	37	0.2	\$ 30,770.14	100%	100%	0%	0%	100%	\$1,611.74	7.4
													\$ -							
<b>School Total:</b>							<b>652</b>	<b>652</b>	<b>0</b>	<b>556</b>	<b>96</b>	<b>652</b>	<b>\$ 197,095.22</b>	<b>100.0%</b>	<b>85.3%</b>	<b>14.7%</b>	<b>0%</b>	<b>100%</b>	<b>\$27,391.84</b>	<b>47.4</b>

2016-17 Industry Certification  
Viera High School

School	Program	Cert #	Assessment	Teacher of Record	School Grade	# Students Identified	# Participants	# In Progress	# Passing	# Failing	# Completing Participants	Funding Weights	Potential Funding \$	% Participants	% Passing	% Failing	% In Progress	% Completing Participants	Cost of Assessments & Test Prep Used	Potential Bonus FTE Calculation			
VHS	Early Childhood Ed	FLDCF004	Intro to Childcare Training Certificate	Anderson		13	13	0	11	2	13	0	\$ -	100%	85%	15%	0%	100%	\$0.00	0.0			
VHS	Early Childhood Ed	FLDCF005	Staff Credential	Anderson		13	13	0	13	0	13	0	\$ -	100%	100%	0%	0%	100%	\$130.00	0.0			
VHS	Early Childhood Ed		CPR/First Aid	Anderson		13	13	0	13	0	13	0	\$ -	100%	100%	0%	0%	100%	\$52.00	0.0			
VHS	Early Childhood Ed	CPREC001	National CDA	Anderson	X	1	1	0	1	0	1	0.2	\$ 831.63	100%	100%	0%	0%	100%	\$425.00	0.2			
VHS	Digital Media/MM	ADOBE018	Adobe: Premiere Pro	Cole	X	48	48	0	22	26	48	0.1	\$ 9,147.88	100%	46%	54%	0%	100%	\$2,294.65	2.2			
VHS	Digital Media/MM	ADOBE021	Adobe: InDesign	Cole	X	45	45	0	40	5	45	0.1	\$ 16,632.51	100%	89%	11%	0%	100%	\$2,151.24	4.0			
VHS	Digital Media/MM	ADOBE022	Adobe: Photoshop	Cole	X	54	54	0	43	11	54	0.1	\$ 17,879.95	100%	80%	20%	0%	100%	\$2,581.49	4.3			
VHS	Digital Media/MM	MICRO069	MOS Bundle	Cole	X	1	1	0	1	0	1	0.2	\$ 831.63	100%	100%	0%	0%	100%	\$47.81	0.2			
VHS	Comm Tech	ADOBE021	Adobe: InDesign	Cole	X	2	2	0	0	2	2	0.1	\$ -	100%	0%	100%	0%	100%	\$95.61	0.0			
VHS	Comm Tech	MICRO069	MOS Bundle	Cole	X	1	1	0	1	0	1	0.2	\$ 831.63	100%	100%	0%	0%	100%	\$47.81	0.2			
VHS	Bus Software App	MICRO069	MOS Bundle	Gammella	X	1	1	0	1	0	1	0.2	\$ 831.63	100%	100%	0%	0%	100%	\$88.75	0.2			
VHS	Digital Info Tech	MICRO069	MOS Bundle	Gammella	X	23	23	0	22	1	23	0.2	\$ 18,295.76	100%	96%	4%	0%	100%	\$2,041.25	4.4			
VHS	Digital Info Tech	MICRO017	MS Office Master	Gammella	X	1	1	0	1	0	1	0.2	\$ 831.63	100%	100%	0%	0%	100%	\$88.75	0.2			
VHS	Finance Academy	INTUIT001	Intuit: Quick Books	Gammella	X	1	1	0	1	0	1	0.2	\$ 831.63	100%	100%	0%	0%	100%	\$88.75	0.2			
VHS	Finance Academy	MICRO069	MOS Bundle	Gammella	X	37	37	0	36	1	37	0.2	\$ 29,938.51	100%	97%	3%	0%	100%	\$3,283.75	7.2			
VHS	Finance Academy	MICRO017	MS Office Master	Gammella	X	4	4	0	4	0	4	0.2	\$ 3,326.50	100%	100%	0%	0%	100%	\$355.00	0.8			
VHS	Interior Design	CARCH002	Chief Architect	Humphrys	X	18	18	0	13	5	18	0.2	\$ 10,811.13	100%	72%	28%	0%	100%	\$2,255.00	2.6			
VHS	Health Science - Dental	NATHA003	CMAA	Johnston	X	32	32	0	32	0	32	0.1	\$ 13,306.01	100%	100%	0%	0%	100%	\$3,675.00	3.2			
VHS	Health Science - Dental		CPR/AED/BLS for Healthcare Providers	Johnston		32	32	0	32	0	32	0	\$ -	100%	100%	0%	0%	100%	\$128.00	0.0			
VHS	Comm Tech	ADOBE020	Adobe: Illustrator	Peregrina	X	75	75	0	57	18	75	0.1	\$ 23,701.32	100%	76%	24%	0%	100%	\$3,585.40	5.7			
VHS	Comm Tech	ADOBE021	Adobe: InDesign	Peregrina	X	22	22	0	15	7	22	0.1	\$ 6,237.19	100%	68%	32%	0%	100%	\$1,051.72	1.5			
VHS	Comm Tech	ADOBE022	Adobe: Photoshop	Peregrina	X	55	55	0	40	15	55	0.1	\$ 16,632.51	100%	73%	27%	0%	100%	\$2,629.29	4.0			
VHS	Food Science	NRAEF003	ServSafe Manager	Scholle	X	22	22	0	16	6	22	0.2	\$ 13,306.01	100%	73%	27%	0%	100%	\$535.00	3.2			
VHS	TV Production	AVIDT001	AVID Media Composer	Sivco	X	9	9	0	9	0	9	0.1	\$ 3,742.31	100%	100%	0%	0%	100%	\$1,675.00	0.9			
VHS	Bus Software App	MICRO017	MS Office Master	Vacca	X	2	2	0	2	0	2	0.2	\$ 1,663.25	100%	100%	0%	0%	100%	\$177.50	0.4			
VHS	Bus Software App	MICRO069	MOS Bundle	Vacca	X	3	3	0	2	1	3	0.2	\$ 1,663.25	100%	67%	33%	0%	100%	\$266.25	0.4			
VHS	Digital Info Tech	MICRO017	MS Office Master	Vacca	X	2	2	0	2	0	2	0.2	\$ 1,663.25	100%	100%	0%	0%	100%	\$177.50	0.4			
VHS	Digital Info Tech	MICRO069	MOS Bundle	Vacca	X	29	29	0	21	8	29	0.2	\$ 17,464.13	100%	72%	28%	0%	100%	\$2,573.75	4.2			
VHS	Finance Academy	INTUIT001	Intuit: Quick Books	Vacca	X	33	33	0	0	33	33	0.2	\$ -	100%	0%	100%	0%	100%	\$2,928.75	0.0			
VHS	Finance Academy	MICRO069	MOS Bundle	Vacca	X	27	27	0	26	1	27	0.2	\$ 21,622.26	100%	96%	4%	0%	100%	\$2,396.25	5.2			
School Total:													\$	-									
School Total:													\$	232,023.48	100.0%	77.1%	22.9%	0%	100%	\$37,826.27	55.8		

2016-17 Industry Certification  
West Shore High School

School	Program	Cert #	Assessment	Teacher of Record	School Grade	# Students Identified	# Participants	# In Progress	# Passing	# Failing	# Completing Participants	Funding Weights	Potential Funding \$	% Participants	% Passing	% Failing	% In Progress	% Completing Participants	Cost of Assessments & Test Prep Used	Potential Bonus FTE Calculation
WSHS	AP STUD ART 2-D	ADOBE022	Adobe: Photoshop	Finch	X	4	4	0	3	1	4	0.1	\$ 1,247.44	100%	75%	25%	0%	100%	\$168.89	0.3
WSHS	DIGITAL ART IMG2	ADOBE022	Adobe: Photoshop	Finch	X	14	14	0	4	10	14	0.1	\$ 1,663.25	100%	29%	71%	0%	100%	\$591.11	0.4
													\$ -							
<b>School Total:</b>						<b>18</b>	<b>18</b>	<b>0</b>	<b>7</b>	<b>11</b>	<b>18</b>		<b>\$ 2,910.69</b>	<b>100.0%</b>	<b>38.9%</b>	<b>61.1%</b>	<b>0%</b>	<b>100%</b>	<b>\$ 760.00</b>	<b>0.7</b>



# **Industry Certification Results By Middle/JR High School**



**This page intentionally left blank.**

**2016-17 Industry Certification Results  
Cocoa High - Middle School Results**

School	Program	Cert #	Assessment	Teacher of Record	School Grade	# Participants	# Passing	Funding Weights	Potential Funding \$	Cost of Assessments & Test Prep Used	Potential Bonus FTE Calculation
CHSMS	Cptr Appl Bus	CERTI804	IC3 - Key Applications	Nauman		21	21	0.025	\$ 2,183.02	\$791.76	0.525
				<b>Digital Tools</b>		<b>21</b>	<b>21</b>	<b>0.025</b>	<b>\$ 2,183.02</b>	<b>\$791.76</b>	<b>0.525</b>
CHSMS	Digital Info Tech	MICRO069	MOS Bundle	Nauman	X	16	16	0.100	\$ 6,653.00	\$603.24	1.600
				<b>Certifications</b>		<b>16</b>	<b>16</b>	<b>0.100</b>	<b>\$ 6,653.00</b>	<b>\$603.24</b>	<b>1.600</b>
				<b>School Total</b>		<b>37</b>	<b>37</b>		<b>\$ 8,836.02</b>	<b>\$1,395.00</b>	<b>2.125</b>

**2016-17 Industry Certification Results  
Cocoa Beach Jr/Sr - Middle School Results**

School	Program	Cert #	Assessment	Teacher of Record	School Grade	# Participants	# Passing	Funding Weights	Potential Funding \$	Cost of Assessments & Test Prep Used	Potential Bonus FTE Calculation
CBHSMS	Cptr Appl Bus	CERTI802	IC3 - Spark	Friedlander		1	1	0.025	\$ 103.95	\$53.33	0.025
CBHSMS	Cptr Appl Bus	CERTI803	IC3 - Computing Fund	Friedlander		2	2	0.025	\$ 207.91	\$106.67	0.050
CBHSMS	Cptr Appl Bus	CERTI804	IC3 - Key Applications	Friedlander		18	18	0.025	\$ 1,871.16	\$960.00	0.450
CBHSMS	Cptr Appl Bus	CERTI805	IC3 - Living Online	Friedlander		4	4	0.025	\$ 415.81	\$213.33	0.100
CBHSMS	Cptr Appl Bus	CERTI803	IC3 - Computing Fund	Moore		3	3	0.025	\$ 311.86	\$160.00	0.075
CBHSMS	Cptr Appl Bus	CERTI804	IC3 - Key Applications	Moore		26	26	0.025	\$ 2,702.78	\$1,386.67	0.650
CBHSMS	Cptr Appl Bus	CERTI805	IC3 - Living Online	Moore		9	9	0.025	\$ 935.58	\$480.00	0.225
CBHSMS	Cptr Appl Bus	MICRO802	MS Office Specialist: Word	Moore		1	1	0.025	\$ 103.95	\$53.33	0.025
CBHSMS	Cptr Appl Bus	CERTI804	IC3 - Key Applications	Walz		29	29	0.025	\$ 3,014.64	\$1,546.67	0.725
CBHSMS	Cptr Appl Bus	CERTI805	IC3 - Living Online	Walz		12	12	0.025	\$ 1,247.44	\$640.00	0.300
				<b>Digital Tools</b>		<b>105</b>	<b>105</b>	<b>0.250</b>	<b>\$ 10,915.08</b>	<b>\$5,600.00</b>	<b>2.625</b>
CBHSMS	Digital Info Tech	MICRO069	MOS Bundle	Friedlander	X	3	3	0.100	\$ 1,247.44	\$160.00	0.300
				<b>Certifications</b>		<b>3</b>	<b>3</b>	<b>0.100</b>	<b>\$ 1,247.44</b>	<b>\$160.00</b>	<b>0.300</b>
				<b>School Total</b>		<b>108</b>	<b>108</b>		<b>\$ 12,162.52</b>	<b>\$ 5,760.00</b>	<b>2.925</b>

## 2016-17 Industry Certification Results Central Middle School

School	Program	Cert #	Assessment	Teacher of Record	School Grade	# Participants	# Passing	Funding Weights	Potential Funding \$	Cost of Assessments & Test Prep Used	Potential Bonus FTE Calculation
CMS	Cptr Appl Bus	CERTI803	IC3 - Computing Fund	Hrkach		12	12	0.025	\$ 1,247.44	\$553.43	0.300
CMS	Cptr Appl Bus	CERTI804	IC3 - Key Applications	Hrkach		46	46	0.025	\$ 4,781.85	\$2,121.49	1.150
CMS	Cptr Appl Bus	CERTI805	IC3 - Living Online	Hrkach		15	15	0.025	\$ 1,559.30	\$691.79	0.375
CMS	Cptr Appl Bus	MICRO801	MS Office Specialist: Excel	Hrkach		2	2	0.025	\$ 207.91	\$92.24	0.050
CMS	Cptr Appl Bus	MICRO802	MS Office Specialist: Word	Hrkach		6	6	0.025	\$ 623.72	\$276.72	0.150
CMS	Digital Info Tech	CERTI803	IC3 - Computing Fund	Hrkach		6	6	0.025	\$ 623.72	\$276.72	0.150
CMS	Digital Info Tech	CERTI804	IC3 - Key Applications	Hrkach		5	5	0.025	\$ 519.77	\$230.60	0.125
CMS	Digital Info Tech	CERTI805	IC3 - Living Online	Hrkach		10	10	0.025	\$ 1,039.53	\$461.19	0.250
CMS	Digital Info Tech	MICRO801	MS Office Specialist: Excel	Hrkach		1	1	0.025	\$ 103.95	\$46.12	0.025
CMS	Digital Info Tech	MICRO802	MS Office Specialist: Word	Hrkach		20	20	0.025	\$ 2,079.06	\$922.39	0.500
CMS	Cptr Appl Bus	CERTI803	IC3 - Computing Fund	Kraus		7	7	0.025	\$ 727.67	\$322.84	0.175
CMS	Cptr Appl Bus	CERTI804	IC3 - Key Applications	Kraus		72	72	0.025	\$ 7,484.63	\$3,320.60	1.800
CMS	Cptr Appl Bus	CERTI805	IC3 - Living Online	Kraus		10	10	0.025	\$ 1,039.53	\$461.19	0.250
CMS	Cptr Appl Bus	MICRO802	MS Office Specialist: Word	Kraus		2	2	0.025	\$ 207.91	\$92.24	0.050
						<b>214</b>	<b>214</b>	<b>0.350</b>	<b>\$ 22,245.98</b>	<b>\$9,869.55</b>	<b>5.350</b>
CMS	Cptr Appl Bus	MICRO017	MS Office Master	Hrkach	X	1	1	0.1	\$ 415.81	\$46.12	0.100
CMS	Cptr Appl Bus	MICRO069	MOS Bundle	Hrkach	X	3	3	0.1	\$ 1,247.44	\$138.36	0.300
CMS	Digital Info Tech	MICRO017	MS Office Master	Hrkach	X	3	3	0.1	\$ 1,247.44	\$138.36	0.300
CMS	Digital Info Tech	MICRO069	MOS Bundle	Hrkach	X	47	47	0.1	\$ 19,543.20	\$2,167.61	4.700
						<b>54</b>	<b>54</b>	<b>0.4</b>	<b>\$ 22,453.89</b>	<b>\$2,490.45</b>	<b>5.400</b>
						<b>268</b>	<b>268</b>		<b>\$ 44,699.86</b>	<b>\$12,360.00</b>	<b>10.750</b>
									<b>\$ 40,541.74</b>		<b>9.750</b>

**2016-17 Industry Certification Results  
DeLaura Middle School**

School	Program	Cert #	Assessment	Teacher of Record	School Grade	# Participants	# Passing	Funding Weights	Potential Funding \$	Cost of Assessments & Test Prep Used	Potential Bonus FTE Calculation
DMS	Cptr Appl Bus	CERT1804	IC3 - Key Applications	Bryant		6	6	0.025	\$ 623.72	\$2,181.82	0.150
DMS	Cptr Appl Bus	CERT1804	IC3 - Key Applications	Reynolds		5	5	0.025	\$ 519.77	\$1,818.18	0.125
				<b>Digital Tools</b>		<b>11</b>	<b>11</b>	<b>0.050</b>	<b>\$ 1,143.48</b>	<b>\$4,000.00</b>	<b>0.275</b>
				<b>School Total</b>		<b>11</b>	<b>11</b>		<b>\$ 1,143.48</b>	<b>\$4,000.00</b>	<b>0.275</b>

## 2016-17 Industry Certification Results

### Hoover Middle School

School	Program	Cert #	Assessment	Teacher of Record	School Grade	# Participants	# Passing	Funding Weights	Potential Funding \$	Cost of Assessments & Test Prep Used	Potential Bonus FTE Calculation
HMS	Cptr Appl Bus	CERT1804	IC3 - Key Applications	Weaver		42	42	0.025	\$ 4,366.03	\$1,858.72	1.050
HMS	Cptr Appl Bus	CERT1805	IC3 - Key Applications	Weaver		1	1	0.025	\$ 103.95	\$44.26	0.025
HMS	Digital Info Tech	CERT1804	IC3 - Key Applications	Weaver		7	7	0.025	\$ 727.67	\$309.79	0.175
						<b>50</b>	<b>50</b>	<b>0.075</b>	<b>\$ 5,197.66</b>	<b>\$2,212.77</b>	<b>1.250</b>
HMS	Cptr Appl Bus	MICRO069	MOS Bundle	Weaver	X	2	2	0.100	\$ 831.63	\$88.51	0.200
HMS	Digital Info Tech	MICRO069	MOS Bundle	Weaver	X	42	42	0.100	\$ 17,464.13	\$1,858.72	4.200
						<b>44</b>	<b>44</b>	<b>0.200</b>	<b>\$ 18,295.76</b>	<b>\$1,947.23</b>	<b>4.400</b>
						<b>94</b>	<b>94</b>		<b>\$ 23,493.42</b>	<b>\$4,160.00</b>	<b>5.650</b>
				Limited to .100 per student					<b>\$ 22,869.70</b>		<b>5.500</b>

**2016-17 Industry Certification Results  
Jackson Middle School**

School	Program	Cert #	Assessment	Teacher of Record	School Grade	# Participants	# Passing	Funding Weights	Potential Funding \$	Cost of Assessments & Test Prep Used	Potential Bonus FTE Calculation
JAMS	Cptr Appl Bus	CERTI804	IC3 - Key Applications	Hendrix		46	46	0.025	\$ 4,781.85	\$2,843.64	1.150
JAMS	Cptr Appl Bus	CERTI805	IC3 - Living Online	Hendrix		1	1	0.025	\$ 103.95	\$61.82	0.025
JAMS	Cptr Appl Bus	MICRO802	MS Office Specialist: Word	Hendrix		1	1	0.025	\$ 103.95	\$61.82	0.025
JAMS	Digital Info Tech	CERTI803	IC3 - Computing Fundamentals	Hendrix		1	1	0.025	\$ 103.95	\$61.82	0.025
JAMS	Digital Info Tech	CERTI804	IC3 - Key Applications	Hendrix		1	1	0.025	\$ 103.95	\$61.82	0.025
JAMS	Digital Info Tech	MICRO802	MS Office Specialist: Word	Hendrix		8	8	0.025	\$ 831.63	\$494.55	0.200
			<b>Digital Tools</b>			<b>58</b>	<b>58</b>	<b>0.150</b>	<b>\$ 6,029.28</b>	<b>\$3,585.45</b>	<b>1.450</b>
JAMS	Digital Info Tech	MICRO069	MOS Bundle	Hendrix	X	19	19	0.100	\$ 7,900.44	\$1,174.55	1.900
			<b>Certifications</b>			<b>19</b>	<b>19</b>	<b>0.100</b>	<b>\$ 7,900.44</b>	<b>\$1,174.55</b>	<b>1.900</b>
			<b>School Total</b>			<b>77</b>	<b>77</b>		<b>\$ 13,929.73</b>	<b>\$4,760.00</b>	<b>3.350</b>
			<b>Limited to .100 per student</b>						<b>\$ 13,721.82</b>		<b>3.300</b>



## 2016-17 Industry Certification Results

### Jefferson Middle School

School	Program	Cert #	Assessment	Teacher of Record	School Grade	# Participants	# Passing	Funding Weights	Potential Funding \$	Cost of Assessments & Test Prep Used	Potential Bonus FTE Calculation
JEMS	Cptr Appl Bus	CERTI804	IC3 - Key Applications	Buchanan		61	61	0.025	\$ 6,341.14	\$3,904.00	1.525
JEMS	Digital Info Tech	MICRO801	MS Office Specialist: Excel	Buchanan		6	6	0.025	\$ 623.72	\$384.00	0.150
JEMS	Digital Info Tech	MICRO802	MS Office Specialist: Word	Buchanan		6	6	0.025	\$ 623.72	\$384.00	0.150
						<b>73</b>	<b>73</b>	<b>0.075</b>	<b>\$ 7,588.58</b>	<b>\$4,672.00</b>	<b>1.825</b>
JEMS	Digital Info Tech	MICRO069	MOS Bundle	Buchanan	X	17	17	0.100	\$ 7,068.82	\$1,088.00	1.700
						<b>17</b>	<b>17</b>	<b>0.100</b>	<b>\$ 7,068.82</b>	<b>\$1,088.00</b>	<b>1.700</b>
						<b>90</b>	<b>90</b>		<b>\$ 14,657.40</b>	<b>\$5,760.00</b>	<b>3.525</b>

**2016-17 Industry Certification Results  
Johnson Middle School**

School	Program	Cert #	Assessment	Teacher of Record	School Grade	# Participants	# Passing	Funding Weights	Potential Funding \$	Cost of Assessments & Test Prep Used	Potential Bonus FTE Calculation
JOMS	Cptr Appl Bus	CERT1804	IC3 - Key Applications	Jacobs		14	14	0.025	\$ 1,455.34	\$3,360.00	0.350
JOMS	Cptr Appl Bus	MICRO802	MS Office Specialist: Word	Jacobs		1	1	0.025	\$ 103.95	\$240.00	0.025
JOMS	Digital Info Tech	MICRO801	MS Office Specialist: Excel	Scholz		4	4	0.025	\$ 415.81	\$960.00	0.100
JOMS	Digital Info Tech	MICRO802	MS Office Specialist: Word	Scholz		3	3	0.025	\$ 311.86	\$720.00	0.075
				<b>Digital Tools</b>		<b>22</b>	<b>22</b>	<b>0.100</b>	<b>\$ 2,286.97</b>	<b>\$5,280.00</b>	<b>0.550</b>
JOMS	Cptr Appl Bus	MICRO069	MOS Bundle	Jacobs	X	1	1	0.1	\$ 415.81	\$240.00	0.100
JOMS	Digital Info Tech	MICRO069	MOS Bundle	Scholz	X	16	16	0.1	\$ 6,653.00	\$3,840.00	1.600
				<b>Certifications</b>		<b>17</b>	<b>17</b>	<b>0.200</b>	<b>\$ 7,068.82</b>	<b>\$4,080.00</b>	<b>1.700</b>
				<b>School Total</b>		<b>39</b>	<b>39</b>		<b>\$ 9,355.79</b>	<b>\$9,360.00</b>	<b>2.250</b>
				<b>Limited to .100 per student</b>					<b>\$ 9,251.83</b>		<b>2.225</b>

## 2016-17 Industry Certification Results Kennedy Middle School

School	Program	Cert #	Assessment	Teacher of Record	School Grade	# Participants	# Passing	Funding Weights	Potential Funding \$	Cost of Assessments & Test Prep Used	Potential Bonus FTE Calculation
KMS	Cptr Appl Bus	CERTI804	IC3 - Key Applications	Reaves		93	93	0.025	\$ 9,667.65	\$3,648.46	2.325
KMS	Digital Info Tech	MICRO801	MS Office Specialist: Excel	Reaves		4	4	0.025	\$ 415.81	\$156.92	0.100
KMS	Digital Info Tech	MICRO802	MS Office Specialist: Word	Reaves		4	4	0.025	\$ 415.81	\$156.92	0.100
KMS	Or Car&Tec Occs	PROSO802	ICT - Gaming Essentials	Reaves		11	11	0.025	\$ 1,143.48	\$431.54	0.275
			<b>Digital Tools</b>			<b>112</b>	<b>112</b>	<b>0.100</b>	<b>\$ 11,642.76</b>	<b>\$4,393.85</b>	<b>2.800</b>
KMS	Digital Info Tech	MICRO069	MOS Bundle	Reaves	X	44	44	0.100	\$ 18,295.76	\$1,726.15	4.400
			<b>Certifications</b>			<b>44</b>	<b>44</b>	<b>0.100</b>	<b>\$ 18,295.76</b>	<b>\$1,726.15</b>	<b>4.400</b>
			<b>School Total</b>			<b>156</b>	<b>156</b>		<b>\$ 29,938.51</b>	<b>\$6,120.00</b>	<b>7.200</b>

## 2016-17 Industry Certification Results Madison Middle School

School	Program	Cert #	Assessment	Teacher of Record	School Grade	# Participants	# Passing	Funding Weights	Potential Funding \$	Cost of Assessments & Test Prep Used	Potential Bonus FTE Calculation
MAMS	Cptr Appl Bus	CERTI803	IC3 - Computing Fund	Lee		1	1	0.025	\$ 103.95	\$68.24	0.025
MAMS	Cptr Appl Bus	CERTI804	IC3 - Key Applications	Lee		33	33	0.025	\$ 3,430.45	\$2,251.76	0.825
MAMS	Cptr Appl Bus	CERTI805	IC3 - Living Online	Lee		1	1	0.025	\$ 103.95	\$68.24	0.025
MAMS	Digital Info Tech	MICRO801	MS Office Specialist: Excel	Lee		1	1	0.025	\$ 103.95	\$68.24	0.025
MAMS	Digital Info Tech	MICRO802	MS Office Specialist: Word	Lee		8	8	0.025	\$ 831.63	\$545.88	0.200
						<b>44</b>	<b>44</b>	<b>0.125</b>	<b>\$ 4,573.94</b>	<b>\$3,002.35</b>	<b>1.100</b>
MAMS	Digital Info Tech	MICRO069	MOS Bundle	Lee	X	24	24	0.100	\$ 9,979.50	\$1,637.65	2.400
						<b>24</b>	<b>24</b>	<b>0.100</b>	<b>\$ 9,979.50</b>	<b>\$1,637.65</b>	<b>2.400</b>
						<b>68</b>	<b>68</b>		<b>\$ 14,553.44</b>	<b>\$4,640.00</b>	<b>3.500</b>

**2016-17 Industry Certification Results  
McNair Middle School**

School	Program	Cert #	Assessment	Teacher of Record	School Grade	# Participants	# Passing	Funding Weights	Potential Funding \$	Cost of Assessments & Test Prep Used	Potential Bonus FTE Calculation
MCMS	Cptr Appl Bus	CERTI804	IC3 - Key Applications	Scheen		18	18	0.025	\$ 1,871.16	\$2,412.00	0.450
MCMS	Cptr Appl Bus	CERTI805	IC3 - Living Online	Scheen		1	1	0.025	\$ 103.95	\$134.00	0.025
MCMS	Cptr Appl Bus	MICRO802	MS Office Specialist: Wo	Scheen		1	1	0.025	\$ 103.95	\$134.00	0.025
			<b>Digital Tools</b>			<b>20</b>	<b>20</b>	<b>0.075</b>	<b>\$ 2,079.06</b>	<b>\$2,680.00</b>	<b>0.500</b>
				<b>School Total</b>		<b>20</b>	<b>20</b>		<b>\$ 2,079.06</b>	<b>\$2,680.00</b>	<b>0.500</b>

**2016-17 Industry Certification Results  
Space Coast Jr/Sr - Middle School**

School	Program	Cert #	Assessment	Teacher of Record	School Grade	# Participants	# Passing	Funding Weights	Potential Funding \$	Cost of Assessments & Test Prep Used	Potential Bonus FTE Calculation
SCHSMS	Digital Info Tech	MICRO069	MOS Bundle	Stopplebein	X	2	2	0.100	\$ 831.63	\$90.00	0.200
				<b>Certifications</b>		<b>2</b>	<b>2</b>	<b>0.100</b>	<b>\$ 831.63</b>	<b>\$90.00</b>	<b>0.200</b>
				<b>School Total</b>		<b>2</b>	<b>2</b>		<b>\$ 831.63</b>	<b>\$90.00</b>	<b>0.200</b>

**2016-17 Industry Certification Results  
Stone Middle School**

School	Program	Cert #	Assessment	Teacher of Record	School Grade	# Participants	# Passing	Funding Weights	Potential Funding \$	Cost of Assessments & Test Prep Used	Potential Bonus FTE Calculation
STMS	Digital Info Tech	MICRO801	MS Office Specialist: Excel	Gelzinis		3	3	0.025	\$ 4,158.13	\$1,160.00	0.075
				<b>Digital Tools</b>		<b>3</b>	<b>3</b>	<b>0.025</b>	<b>\$ 4,158.13</b>	<b>\$1,160.00</b>	<b>0.075</b>
				<b>School Total</b>		<b>3</b>	<b>3</b>		<b>\$ 4,158.13</b>	<b>\$1,160.00</b>	<b>0.075</b>

## 2016-17 Industry Certification Results

### Southwest Middle School

School	Program	Cert #	Assessment	Teacher of Record	School Grade	# Participants	# Passing	Funding Weights	Potential Funding \$	Cost of Assessments & Test Prep Used	Potential Bonus FTE Calculation
SWMS	Cptr Appl Bus	CERTI803	IC3 - Computing Fund	Merrill		3	3	0.025	\$ 311.86	\$162.08	0.075
SWMS	Cptr Appl Bus	CERTI804	IC3 - Key Applications	Merrill		54	54	0.025	\$ 5,613.47	\$2,917.40	1.350
SWMS	Cptr Appl Bus	CERTI805	IC3 - Living Online	Merrill		1	1	0.025	\$ 103.95	\$54.03	0.025
SWMS	Digital Info Tech	CERTI803	IC3 - Computing Fund	Merrill		1	1	0.025	\$ 103.95	\$54.03	0.025
SWMS	Digital Info Tech	CERTI804	IC3 - Key Applications	Merrill		4	4	0.025	\$ 415.81	\$216.10	0.100
SWMS	Digital Info Tech	CERTI805	IC3 - Living Online	Merrill		1	1	0.025	\$ 103.95	\$54.03	0.025
SWMS	Digital Info Tech	MICRO801	MS Office Specialist: Excel	Merrill		1	1	0.025	\$ 103.95	\$54.03	0.025
				<b>Digital Tools</b>		<b>65</b>	<b>65</b>	<b>0.175</b>	<b>\$ 6,756.96</b>	<b>\$3,511.69</b>	<b>1.625</b>
SWMS	Digital Info Tech	MICRO069	MOS Bundle	Merrill	X	12	12	0.100	\$ 4,989.75	\$648.31	1.200
				<b>Certifications</b>		<b>12</b>	<b>12</b>	<b>0.100</b>	<b>\$ 4,989.75</b>	<b>\$648.31</b>	<b>1.200</b>
				<b>School Total</b>		<b>77</b>	<b>77</b>		<b>\$ 11,746.71</b>	<b>\$4,160.00</b>	<b>2.825</b>
				Limited to .100 per student					<b>\$ 11,122.99</b>		<b>2.675</b>



# Industry Certification Results By Assessment



**This page intentionally left blank.**

**2016-17 Industry Certification  
HS Results by Assessment**

Assessment	School	Program	School Grade	# Students Identified	# Participants	# In Progress	# Passing	# Failing	# Completing Participants	Funding Weights	Potential Funding \$	% Participants	% Passing	% Failing	% In Progress	% Completing Participants	Cost of Assessments & Test Prep Used	Potential Bonus FTE Calculation
Adobe Certified Expert (ACE) - Premiere Pro	EGHS	Digital Design	X	1	1	0	1	0	1	0.1	\$ 415.81	100%	100%	0%	0%	100%	\$35.26	0.1
	BHS	Digital Design	X	1	1	0	1	0	1	0.2	\$ 831.63	100%	100%	0%	0%	100%	\$36.72	0.2
Adobe: Dreamweaver	CHS	WebDevelopment	X	14	14	0	2	12	14	0.2	\$ 1,663.25	100%	14%	86%	0%	100%	\$560.00	0.4
	MHS	WebDevelopment	X	21	21	0	10	11	21	0.2	\$ 8,316.25	100%	48%	52%	0%	100%	\$1,058.94	2.0
	MIHS	WebDevelopment	X	34	34	0	34	0	34	0.2	\$ 28,275.26	100%	100%	0%	0%	100%	\$2,458.20	6.8
	MIHS	Digital Design	X	1	1	0	1	0	1	0.2	\$ 831.63	100%	100%	0%	0%	100%	\$37.14	0.2
	THS	Digital Design	X	1	1	0	1	0	1	0.2	\$ 831.63	100%	100%	0%	0%	100%	\$37.24	0.2
	THS	WebDevelopment	X	20	20	0	19	1	20	0.2	\$ 15,800.88	100%	95%	5%	0%	100%	\$1,116.67	3.8
	THS	Digital Design	X	1	1	0	1	0	1	0.2	\$ 831.63	100%	100%	0%	0%	100%	\$37.24	0.2
	BHS	Digital Design	X	2	2	0	1	1	2	0.2	\$ 831.63	100%	50%	50%	0%	100%	\$73.45	0.2
Adobe: Flash	CHS	WebDevelopment	X	1	1	0	0	1	1	0.2	\$ -	100%	0%	100%	0%	100%	\$40.00	0.0
	MHS	WebDevelopment	X	17	17	0	10	7	17	0.2	\$ 8,316.25	100%	59%	41%	0%	100%	\$857.23	2.0
	MIHS	WebDevelopment	X	16	16	0	16	0	16	0.2	\$ 13,306.01	100%	100%	0%	0%	100%	\$1,156.80	3.2
	THS	Digital Design	X	10	10	0	8	2	10	0.2	\$ 6,653.00	100%	80%	20%	0%	100%	\$372.37	1.6
	THS	WebDevelopment	X	1	1	0	0	1	1	0.2	\$ -	100%	0%	100%	0%	100%	\$55.83	0.0
Adobe: Illustrator	AHS	Digital Media/MM	X	45	45	0	13	32	45	0.1	\$ 5,405.56	100%	29%	71%	0%	100%	\$2,168.80	1.3
	BHS	Comm Tech	X	6	6	0	6	0	6	0.1	\$ 2,494.88	100%	100%	0%	0%	100%	\$220.34	0.6
	BHS	Digital Design	X	48	48	0	40	8	48	0.1	\$ 16,632.51	100%	83%	17%	0%	100%	\$1,762.69	4.0
	CHS	Digital Design	X	4	4	0	0	4	4	0.1	\$ -	100%	0%	100%	0%	100%	\$297.25	0.0
	EGHS	Digital Info Tech	X	1	1	0	1	0	1	0.1	\$ 415.81	100%	100%	0%	0%	100%	\$732.50	0.1
	EGHS	Digital Design	X	6	6	0	1	5	6	0.1	\$ 415.81	100%	17%	83%	0%	100%	\$211.55	0.1
	EGHS	Digital Media/MM	X	35	35	0	6	29	35	0.1	\$ 2,494.88	100%	17%	83%	0%	100%	\$1,234.05	0.6
	EHS	Digital Design	X	41	41	0	21	20	41	0.1	\$ 8,732.07	100%	51%	49%	0%	100%	\$875.79	2.1
	MHS	WebDevelopment	X	1	1	0	0	1	1	0.1	\$ -	100%	0%	100%	0%	100%	\$50.43	0.0
	MIHS	Digital Design	X	18	18	0	18	0	18	0.1	\$ 7,484.63	100%	100%	0%	0%	100%	\$668.49	1.8
	MIHS	Marketing Management	X	1	1	0	1	0	1	0.1	\$ 415.81	100%	100%	0%	0%	100%	\$17.16	0.1
	RHS	Digital Design	X	9	9	0	9	0	9	0.1	\$ 3,742.31	100%	100%	0%	0%	100%	\$450.30	0.9
	SHS	Digital Media/MM	X	1	1	0	0	1	1	0.1	\$ -	100%	0%	100%	0%	100%	\$39.94	0.0
	SHS	Digital Media/MM	X	25	25	0	11	14	25	0.1	\$ 4,573.94	100%	44%	56%	0%	100%	\$998.53	1.1
	THS	Digital Design	X	32	32	0	27	5	32	0.1	\$ 11,226.94	100%	84%	16%	0%	100%	\$1,191.60	2.7
	THS	Digital Design	X	3	3	0	3	0	3	0.1	\$ 1,247.44	100%	100%	0%	0%	100%	\$111.71	0.3
	THS	Digital Design	X	1	1	0	1	0	1	0.1	\$ 415.81	100%	100%	0%	0%	100%	\$37.24	0.1
	VHS	Comm Tech	X	75	75	0	57	18	75	0.1	\$ 23,701.32	100%	76%	24%	0%	100%	\$3,585.40	5.7

**2016-17 Industry Certification  
HS Results by Assessment**

Assessment	School	Program	School Grade	# Students Identified	# Participants	# In Progress	# Passing	# Failing	# Completing Participants	Funding Weights	Potential Funding \$	% Participants	% Passing	% Failing	% In Progress	% Completing Participants	Cost of Assessments & Test Prep Used	Potential Bonus FTE Calculation
Adobe: InDesign	AHS	Digital Media/MM	X	1	1	0	1	0	1	0.1	\$ 415.81	100%	100%	0%	0%	100%	\$48.20	0.1
	BHS	Comm Tech	X	6	6	0	6	0	6	0.1	\$ 2,494.88	100%	100%	0%	0%	100%	\$220.34	0.6
	BHS	Digital Design	X	29	29	0	24	5	29	0.1	\$ 9,979.50	100%	83%	17%	0%	100%	\$1,064.96	2.4
	CHS	Digital Design	X	11	11	0	0	11	11	0.1	\$ -	100%	0%	100%	0%	100%	\$817.44	0.0
	EGHS	Digital Design	X	7	7	0	3	4	7	0.1	\$ 1,247.44	100%	43%	57%	0%	100%	\$246.81	0.3
	EGHS	Digital Media/MM	X	6	6	0	2	4	6	0.1	\$ 831.63	100%	33%	67%	0%	100%	\$211.55	0.2
	EHS	Digital Design	X	46	46	0	37	9	46	0.1	\$ 15,385.07	100%	80%	20%	0%	100%	\$982.59	3.7
	MHS	Digital Design	X	16	16	0	10	6	16	0.1	\$ 4,158.13	100%	63%	38%	0%	100%	\$665.60	1.0
	MIHS	Digital Design	X	35	35	0	34	1	35	0.1	\$ 14,137.63	100%	97%	3%	0%	100%	\$1,299.85	3.4
	MIHS	Marketing Management	X	7	7	0	5	2	7	0.1	\$ 2,079.06	100%	71%	29%	0%	100%	\$120.11	0.5
	RHS	Digital Design	X	42	42	0	24	18	42	0.1	\$ 9,979.50	100%	57%	43%	0%	100%	\$2,101.41	2.4
	SHS	Digital Media/MM	X	1	1	0	1	0	1	0.1	\$ 415.81	100%	100%	0%	0%	100%	\$39.94	0.1
	SHS	Marketing Management	X	6	6	0	1	5	6	0.1	\$ 415.81	100%	17%	83%	0%	100%	\$240.00	0.1
	SHS	Digital Media/MM	X	20	20	0	6	14	20	0.1	\$ 2,494.88	100%	30%	70%	0%	100%	\$798.82	0.6
	THS	Digital Design	X	64	64	0	37	27	64	0.1	\$ 15,385.07	100%	58%	42%	0%	100%	\$2,383.20	3.7
	THS	Web Development	X	1	1	0	1	1	2	0.1	\$ 415.81	100%	50%	50%	0%	200%	\$55.83	0.1
	THS	Digital Design	X	7	7	0	6	1	7	0.1	\$ 2,494.88	100%	86%	14%	0%	100%	\$260.66	0.6
	THS	Digital Design	X	2	2	0	0	2	2	0.1	\$ -	100%	0%	100%	0%	100%	\$74.47	0.0
	VHS	Digital Media/MM	X	45	45	0	40	5	45	0.1	\$ 16,632.51	100%	89%	11%	0%	100%	\$2,151.24	4.0
	VHS	Comm Tech	X	2	2	0	0	2	2	0.1	\$ -	100%	0%	100%	0%	100%	\$95.61	0.0
VHS	Comm Tech	X	22	22	0	15	7	22	0.1	\$ 6,237.19	100%	68%	32%	0%	100%	\$1,051.72	1.5	
Adobe: Photoshop	AHS	Digital Media/MM	X	87	87	0	31	56	87	0.1	\$ 12,890.19	100%	36%	64%	0%	100%	\$4,193.01	3.1
	BHS	Comm Tech	X	9	9	0	9	0	9	0.1	\$ 3,742.31	100%	100%	0%	0%	100%	\$330.50	0.9
	BHS	Digital Design	X	15	15	0	13	2	15	0.1	\$ 5,405.56	100%	87%	13%	0%	100%	\$550.84	1.3
	CHS	Digital Info Tech	X	1	1	0	0	1	1	0.1	\$ -	100%	0%	100%	0%	100%	\$191.43	0.0
	CHS	Digital Design	X	17	17	0	5	12	17	0.1	\$ 2,079.06	100%	29%	71%	0%	100%	\$1,263.31	0.5
	CHS	Digital Info Tech	X	2	2	0	0	2	2	0.1	\$ -	100%	0%	100%	0%	100%	\$382.86	0.0
	EGHS	Bus Software App	X	1	1	0	1	0	1	0.1	\$ 415.81	100%	100%	0%	0%	100%	\$732.50	0.1
	EGHS	Digital Design	X	1	1	0	1	0	1	0.1	\$ 415.81	100%	100%	0%	0%	100%	\$35.26	0.1
	EGHS	Digital Media/MM	X	83	83	0	25	58	83	0.1	\$ 10,395.32	100%	30%	70%	0%	100%	\$2,926.47	2.5
	EGHS	AICE Art	X	5	5	0	0	5	5	0.1	\$ -	100%	0%	100%	0%	100%	\$176.29	0.0
	EHS	Digital Design	X	43	43	0	31	12	43	0.1	\$ 12,890.19	100%	72%	28%	0%	100%	\$918.51	3.1
	HHS	Digital Media/MM	X	42	42	0	8	34	42	0.1	\$ 3,326.50	100%	19%	81%	0%	100%	\$4,490.86	0.8
	MHS	Web Development	X	7	7	0	3	4	7	0.1	\$ 1,247.44	100%	43%	57%	0%	100%	\$352.98	0.3
	MHS	Digital Design	X	84	84	0	40	44	84	0.1	\$ 16,632.51	100%	48%	52%	0%	100%	\$3,494.40	4.0
	MIHS	Digital Design	X	23	23	0	22	1	23	0.1	\$ 9,147.88	100%	96%	4%	0%	100%	\$854.19	2.2
	MIHS	Hosp & Tourism	X	13	13	0	2	11	13	0.1	\$ 831.63	100%	15%	85%	0%	100%	\$223.07	0.2
	MIHS	Marketing Management	X	11	11	0	2	9	11	0.1	\$ 831.63	100%	18%	82%	0%	100%	\$188.75	0.2
	MBMS	Digital Media/MM	X	46	46	0	3	43	46	0.1	\$ 1,247.44	100%	7%	93%	0%	100%	\$2,815.00	0.3
	RHS	Hosp & Tourism	X	22	22	0	15	7	22	0.1	\$ 6,237.19	100%	68%	32%	0%	100%	\$915.20	1.5
	RHS	Digital Design	X	98	98	0	69	29	98	0.1	\$ 28,691.08	100%	70%	30%	0%	100%	\$4,903.29	6.9
	SHS	Digital Media/MM	X	1	1	0	1	0	1	0.1	\$ 415.81	100%	100%	0%	0%	100%	\$39.94	0.1
	SHS	Digital Media/MM	X	36	36	0	18	18	36	0.1	\$ 7,484.63	100%	50%	50%	0%	100%	\$1,437.88	1.8
	THS	Digital Design	X	24	24	0	24	0	24	0.1	\$ 9,979.50	100%	100%	0%	0%	100%	\$893.70	2.4
	THS	Web Development	X	32	32	0	27	4	31	0.1	\$ 11,226.94	100%	87%	13%	0%	97%	\$1,786.67	2.7
	THS	Digital Design	X	29	29	0	25	4	29	0.1	\$ 10,395.32	100%	86%	14%	0%	100%	\$1,079.89	2.5
	THS	Digital Design	X	45	45	0	28	17	45	0.1	\$ 11,642.76	100%	62%	38%	0%	100%	\$1,675.68	2.8
	VHS	Digital Media/MM	X	54	54	0	43	11	54	0.1	\$ 17,879.95	100%	80%	20%	0%	100%	\$2,581.49	4.3
	VHS	Comm Tech	X	55	55	0	40	15	55	0.1	\$ 16,632.51	100%	73%	27%	0%	100%	\$2,629.29	4.0
	WSHS	AP STUD ART 2-D	X	4	4	0	3	1	4	0.1	\$ 1,247.44	100%	75%	25%	0%	100%	\$168.89	0.3
	WSHS	DIGITAL ART IMG2	X	14	14	0	4	10	14	0.1	\$ 1,663.25	100%	29%	71%	0%	100%	\$591.11	0.4

**2016-17 Industry Certification  
HS Results by Assessment**

Assessment	School	Program	School Grade	# Students Identified	# Participants	# In Progress	# Passing	# Failing	# Completing Participants	Funding Weights	Potential Funding \$	% Participants	% Passing	% Failing	% In Progress	% Completing Participants	Cost of Assessments & Test Prep Used	Potential Bonus FTE Calculation
Adobe: Premiere Pro	BHS	Digital Design	X	3	3	0	3	0	3	0.1	\$ 1,247.44	100%	100%	0%	0%	100%	\$110.17	0.3
	EGHS	Digital Design	X	5	5	0	0	5	5	0.1	\$ -	100%	0%	100%	0%	100%	\$176.29	0.0
	EGHS	Digital Media/MM	X	24	24	0	6	18	24	0.1	\$ 2,494.88	100%	25%	75%	0%	100%	\$846.21	0.6
	MHS	Web Development	X	1	1	0	0	1	1	0.1	\$ -	100%	0%	100%	0%	100%	\$50.43	0.0
	MIHS	Digital Design	X	6	6	0	6	0	6	0.1	\$ 2,494.88	100%	100%	0%	0%	100%	\$222.83	0.6
	SHS	Digital Media/MM	X	1	1	0	1	0	1	0.1	\$ 415.81	100%	100%	0%	0%	100%	\$39.94	0.1
AHA First Aid	VHS	Digital Media/MM	X	48	48	0	22	26	48	0.1	\$ 9,147.88	100%	46%	54%	0%	100%	\$2,294.65	2.2
	RHS	Patient Care Assisting		52	52	0	52	0	52	0	\$ -	100%	100%	0%	0%	100%	\$208.00	0.0
Air Conditioning Service Tech	SCHS	A/C Refrig & Heat	X	1	1	0	1	0	1	0.2	\$ 831.63	100%	100%	0%	0%	100%	\$127.00	0.2
ALP	RHS	Criminal Justice	X	9	9		4	5	9	0.2	\$ 3,326.50	100%	44%	56%	0%	100%	\$399.91	0.8
Autodesk - Certified User AutoCAD	AHS	Technical Design	X	6	6	0	0	6	6	0.2	\$ -	100%	0%	100%	0%	100%	\$460.50	0.0
	CHS	Drafting	X	22	22	0	11	11	22	0.2	\$ 9,147.88	100%	50%	50%	0%	100%	\$920.00	2.2
	EGHS	Digital Design	X	1	1	0	0	1	1	0.2	\$ -	100%	0%	100%	0%	100%	\$35.26	0.0
	EGHS	Technical Design	X	31	31	0	15	16	31	0.2	\$ 12,474.38	100%	48%	52%	0%	100%	\$1,063.30	3.0
	HHS	Drafting	X	19	19	0	5	14	19	0.2	\$ 4,158.13	100%	26%	74%	0%	100%	\$1,282.50	1.0
	PBMS	Technical Design	X	4	4	0	0	4	4	0.2	\$ -	100%	0%	100%	0%	100%	\$137.22	0.0
	RHS	Technical Design	X	25	25	0	24	1	25	0.2	\$ 19,959.01	100%	96%	4%	0%	100%	\$962.96	4.8
	SHS	Technical Design	X	25	25	0	24	1	25	0.2	\$ 19,959.01	100%	96%	4%	0%	100%	\$969.59	4.8
	SCHS	Drafting	X	26	26	0	26	0	26	0.2	\$ 21,622.26	100%	100%	0%	0%	100%	\$397.65	5.2
	SCHS	Drafting	X	26	26	0	26	0	26	0.2	\$ 21,622.26	100%	100%	0%	0%	100%	\$397.65	5.2
Autodesk - Certified User Inventor	AHS	Technical Design	X	6	6	0	4	2	6	0.2	\$ 3,326.50	100%	67%	33%	0%	100%	\$460.50	0.8
	BHS	Drafting	X	33	33	0	33	0	33	0.2	\$ 27,443.64	100%	100%	0%	0%	100%	\$1,501.04	6.6
	BHS	Engineering Technology	X	1	1	0	1	0	1	0.2	\$ 831.63	100%	100%	0%	0%	100%	\$74.06	0.2
	BHS	Applied Engineering	X	1	1	0	1	0	1	0.2	\$ 831.63	100%	100%	0%	0%	100%	\$74.06	0.2
	EGHS	Technical Design	X	9	9	0	3	6	9	0.2	\$ 2,494.88	100%	33%	67%	0%	100%	\$308.70	0.6
	MIHS	Marketing Management	X	1	1	0	1	0	1	0.2	\$ 831.63	100%	100%	0%	0%	100%	\$17.16	0.2
	MIHS	PLTW - ENGINEERING	X	60	60	0	47	13	60	0.2	\$ 39,086.39	100%	78%	22%	0%	100%	\$3,860.00	9.4
	PBMS	Technical Design	X	15	15	0	14	1	15	0.2	\$ 11,642.76	100%	93%	7%	0%	100%	\$514.58	2.8
	RHS	Technical Design	X	2	2	0	2	0	2	0.2	\$ 1,663.25	100%	100%	0%	0%	100%	\$77.04	0.4
	SHS	Technical Design	X	7	7	0	6	1	7	0.2	\$ 4,989.75	100%	86%	14%	0%	100%	\$271.49	1.2
	SCHS	Drafting	X	19	19	0	19	0	19	0.2	\$ 15,800.88	100%	100%	0%	0%	100%	\$290.59	3.8
	Autodesk - Certified User Revit	BHS	Drafting	X	36	36	0	36	0	36	0.2	\$ 29,938.51	100%	100%	0%	0%	100%	\$1,637.50
EGHS		Technical Design	X	10	10	0	10	0	10	0.2	\$ 8,316.25	100%	100%	0%	0%	100%	\$343.00	2.0
PBMS		Technical Design	X	17	17	0	7	10	17	0.2	\$ 5,821.38	100%	41%	59%	0%	100%	\$583.19	1.4
PBMS		Engineering Technology	X	1	1	0	1	0	1	0.2	\$ 831.63	100%	100%	0%	0%	100%	\$7.86	0.2
SHS		Technical Design	X	5	5	0	4	1	5	0.2	\$ 3,326.50	100%	80%	20%	0%	100%	\$193.92	0.8
SCHS		Drafting	X	23	23	0	23	0	23	0.2	\$ 19,127.38	100%	100%	0%	0%	100%	\$351.76	4.6
SCHS		Drafting	X	23	23	0	23	0	23	0.2	\$ 19,127.38	100%	100%	0%	0%	100%	\$351.76	4.6
Autodesk - Inventor Professional	BHS	Drafting	X	3	3	0	1	2	3	0.2	\$ 831.63	100%	33%	67%	0%	100%	\$136.46	0.2
Autodesk Certified Professional - 3ds Max	AHS	Technical Design	X	1	1	0	0	1	1	0.1	\$ -	100%	0%	100%	0%	100%	\$76.75	0.0
AVID Media Composer	BHS	TV Production	X	20	20	0	20	0	20	0.1	\$ 8,316.25	100%	100%	0%	0%	100%	\$1,675.00	2.0
	EHS	TV Production	X	25	25	0	25	0	25	0.1	\$ 10,395.32	100%	100%	0%	0%	100%	\$1,675.00	2.5
	SCHS	TV Production	X	0	0	0	0	0	0	0.1	\$ -						\$1,675.00	0.0
	THS	TV Production	X	1	1	0	1	0	1	0.1	\$ 415.81	100%	100%	0%	0%	100%	\$1,400.00	0.1
	VHS	TV Production	X	9	9	0	9	0	9	0.1	\$ 3,742.31	100%	100%	0%	0%	100%	\$1,675.00	0.9
C N A	PBMS	Patient Care Assisting	X	12	12	0	11	2	13	0.1	\$ 4,573.94	100%	85%	15%	0%	108%	\$1,860.00	1.1
	THS	Patient Care Assisting	X	37	37	0	36	1	37	0.1	\$ 14,969.26	100%	97%	3%	0%	100%	\$5,890.00	3.6
	AHS	Patient Care Assisting	X	27	27	0	23	4	27	0.1	\$ 9,563.69	100%	85%	15%	0%	100%	\$4,340.00	2.3
	BHS	Patient Care Assisting	X	12	12	0	12	0	12	0.1	\$ 4,989.75	100%	100%	0%	0%	100%	\$2,015.00	1.2
	MHS	Patient Care Assisting	X	14	14	0	14	0	14	0.1	\$ 5,821.38	100%	100%	0%	0%	100%	\$2,170.00	1.4
	RHS	Patient Care Assisting	X	12	12	0	11	1	12	0.1	\$ 4,573.94	100%	92%	8%	0%	100%	\$1,860.00	1.1
Chief Architect	HHS	Interior Design	X	5	5	0	4	1	5	0.2	\$ 3,326.50	100%	80%	20%	0%	100%	\$270.00	0.8
	VHS	Interior Design	X	18	18	0	13	5	18	0.2	\$ 10,811.13	100%	72%	28%	0%	100%	\$2,255.00	2.6

**2016-17 Industry Certification  
HS Results by Assessment**

Assessment	School	Program	School Grade	# Students Identified	# Participants	# In Progress	# Passing	# Failing	# Completing Participants	Funding Weights	Potential Funding \$	% Participants	% Passing	% Failing	% In Progress	% Completing Participants	Cost of Assessments & Test Prep Used	Potential Bonus FTE Calculation
CIW - Advanced HTML5 & CSS3 Spec	PBMS	Web App Dev & Prog	X	7	7	0	2	5	7	0.2	\$ 1,663.25	100%	29%	71%	0%	100%	\$861.54	0.4
CIW - JavaScript Specialist	PBMS	Web App Dev & Prog	X	1	1	0	1	0	1	0.2	\$ 831.63	100%	100%	0%	0%	100%	\$123.08	0.2
CIW - Site Development Assoc	PBMS	Web App Dev & Prog	X	17	17	0	11	6	17	0.2	\$ 9,147.88	100%	65%	35%	0%	100%	\$2,092.31	2.2
CMAA	BHS	Health Science	X	43	43	0	43	0	43	0.1	\$ 17,879.95	100%	100%	0%	0%	100%	\$5,250.00	4.3
	CHS	Health Science	X	14	14	0	8	6	14	0.1	\$ 3,326.50	100%	57%	43%	0%	100%	\$2,040.00	0.8
	EGHS	Health Science	X	17	17	0	17	0	17	0.1	\$ 7,068.82	100%	100%	0%	0%	100%	\$3,400.00	1.7
	HHS	Health Science	X	88	88	0	61	27	88	0.1	\$ 25,364.57	100%	69%	31%	0%	100%	\$8,925.00	6.1
	HHS	Medical Admin Specialist	X	28	28	0	24	4	28	0.1	\$ 9,979.50	100%	86%	14%	0%	100%	\$2,993.91	2.4
	VHS	Health Science - Dental	X	32	32	0	32	0	32	0.1	\$ 13,306.01	100%	100%	0%	0%	100%	\$3,675.00	3.2
CPR/AED/BLS for Healthcare Providers	AHS	Patient Care Assisting		26	26	0	26	0	26	0	\$ -	100%	100%	0%	0%	100%	\$104.00	0.0
	AHS	Health Science		34	34	0	34	0	34	0	\$ -	100%	100%	0%	0%	100%	\$136.00	0.0
	AHS	Emergency Medical Responder		39	39	0	39	0	39	0	\$ -	100%	100%	0%	0%	100%	\$156.00	0.0
	AHS	Health Science		27	27	0	27	0	27	0	\$ -	100%	100%	0%	0%	100%	\$108.00	0.0
	BHS	Health Science		56	56	0	56	0	56	0	\$ -	100%	100%	0%	0%	100%	\$224.00	0.0
	BHS	Patient Care Assisting		11	11	0	11	0	11	0	\$ -	100%	100%	0%	0%	100%	\$44.00	0.0
	CHS	Health Science		14	14	0	14	0	14	0	\$ -	100%	100%	0%	0%	100%	\$56.00	0.0
	EGHS	Health Science		23	23	0	23	0	23	0	\$ -	100%	100%	0%	0%	100%	\$92.00	0.0
	HHS	Health Science		46	46	0	46	0	46	0	\$ -	100%	100%	0%	0%	100%	\$129.74	0.0
	HHS	Health Science		82	82	0	82	0	82	0	\$ -	100%	100%	0%	0%	100%	\$231.28	0.0
	HHS	Medical Admin Specialist		28	28	0	28	0	28	0	\$ -	100%	100%	0%	0%	100%	\$78.97	0.0
	THS	Patient Care Assisting		14	14	0	14	0	14	0.0	\$ -	100%	100%	0%	0%	100%	\$56.00	0.0
	THS	Health Science		109	109	0	109	0	109	0.0	\$ -	100%	100%	0%	0%	100%	\$436.00	0.0
	PBMS	Patient Care Assisting		12	12	0	12	0	12	0	\$ -	100%	100%	0%	0%	100%	\$120.00	0.0
	PBMS	Health Science		51	51	0	51	0	51	0	\$ -	100%	100%	0%	0%	100%	\$510.00	0.0
	RHS	Patient Care Assisting		69	69	0	69	0	69	0	\$ -	100%	100%	0%	0%	100%	\$276.00	0.0
	THS	Patient Care Assisting		37	37	0	37	0	37	0	\$ -	100%	100%	0%	0%	100%	\$148.00	0.0
	THS	Patient Care Assisting		84	84	0	84	0	84	0	\$ -	100%	100%	0%	0%	100%	\$336.00	0.0
	VHS	Health Science - Dental		32	32	0	32	0	32	0	\$ -	100%	100%	0%	0%	100%	\$128.00	0.0
	CPR/First Aid	EGHS	Early Childhood Ed		15	15	0	15	0	15	0	\$ -	100%	100%	0%	0%	100%	\$60.00
MIHS		Early Childhood Ed		12	12	0	12	0	12	0	\$ -	100%	100%	0%	0%	100%	\$120.00	0.0
PBMS		Early Childhood Ed		8	8	0	8	0	8	0	\$ -	100%	100%	0%	0%	100%	\$80.00	0.0
SHS		Early Childhood Ed		12	12	0	12	0	12	0	\$ -	100%	100%	0%	0%	100%	\$48.00	0.0
VHS		Early Childhood Ed		13	13	0	13	0	13	0	\$ -	100%	100%	0%	0%	100%	\$52.00	0.0
EMR	AHS	Emergency Medical Responder	X	39	39	0	34	5	39	0.1	\$ 14,137.63	100%	87%	13%	0%	100%	\$4,900.00	3.4
	MHS	Emergency Medical Responder	X	22	22	0	8	14	22	0.1	\$ 3,326.50	100%	36%	64%	0%	100%	\$2,300.00	0.8
FAA Ground School	EGHS	Aviation	X	30	30	0	30	0	30	0.2	\$ 24,948.76	100%	100%	0%	0%	100%	\$1,750.00	6.0
FLADA	CHS	Automotive Collision	X	36	36	0	8	28	36	0.1	\$ 3,326.50	100%	22%	78%	0%	100%	\$3,334.71	0.8
	EGHS	Marine Tech	X	15	15	0	11	4	15	0.1	\$ 4,573.94	100%	73%	27%	0%	100%	\$2,325.55	1.1
	EGHS	Automotive Service Tech	X	20	20	0	13	7	20	0.1	\$ 5,405.56	100%	65%	35%	0%	100%	\$2,394.00	1.3
	HHS	Automotive Service Tech	X	27	27	0	13	14	27	0.1	\$ 5,405.56	100%	48%	52%	0%	100%	\$3,362.72	1.3
	MIHS	Automotive Service Tech	X	19	19	0	10	9	19	0.1	\$ 4,158.13	100%	53%	47%	0%	100%	\$1,706.13	1.0
	RHS	Automotive Service Tech	X	30	30	0	23	7	30	0.1	\$ 9,563.69	100%	77%	23%	0%	100%	\$3,102.06	2.3
	SHS	Automotive Service Tech	X	34	34	0	16	18	34	0.1	\$ 6,653.00	100%	47%	53%	0%	100%	\$3,824.01	1.6
	THS	Automotive Service Tech	X	17	17	0	14	3	17	0.1	\$ 5,821.38	100%	82%	18%	0%	100%	\$2,016.34	1.4
GIS Technician	CBHS	GIS Technology	X	3	3	0	1	2	3	0.1	\$ 415.81	100%	33%	67%	0%	100%	\$1,850.00	0.1
HVAC Excellence - A/C	SCHS	A/C Refrig & Heat	X	12	12	0	12	0	12	0.2	\$ 9,979.50	100%	100%	0%	0%	100%	\$1,523.95	2.4
HVAC Excellence - Electrical	SCHS	A/C Refrig & Heat	X	8	8	0	8	0	8	0.2	\$ 6,653.00	100%	100%	0%	0%	100%	\$1,015.97	1.6
Intro to Childcare Training Certificate	EGHS	Early Childhood Ed		15	15	0	14	1	15	0	\$ -	100%	93%	7%	0%	100%	\$0.00	0.0
	MIHS	Early Childhood Ed		12	12	0	12	0	12	0	\$ -	100%	100%	0%	0%	100%	\$0.00	0.0
	PBMS	Early Childhood Ed		8	8	0	6	2	8	0	\$ -	100%	75%	25%	0%	100%	\$0.00	0.0
	SHS	Early Childhood Ed		12	12	0	12	0	12	0	\$ -	100%	100%	0%	0%	100%	\$0.00	0.0
	VHS	Early Childhood Ed		13	13	0	11	2	13	0	\$ -	100%	85%	15%	0%	100%	\$0.00	0.0

**2016-17 Industry Certification  
HS Results by Assessment**

Assessment	School	Program	School Grade	# Students Identified	# Participants	# In Progress	# Passing	# Failing	# Completing Participants	Funding Weights	Potential Funding \$	% Participants	% Passing	% Failing	% In Progress	% Completing Participants	Cost of Assessments & Test Prep Used	Potential Bonus FTE Calculation
Intuit: Quick Books	CHS	Accounting	X	26	26	0	1	25	26	0.2	\$ 831.63	100%	4%	96%	0%	100%	\$960.00	0.2
	MHS	Finance Academy	X	18	18	0	5	13	18	0.2	\$ 4,158.13	100%	28%	72%	0%	100%	\$981.85	1.0
	VHS	Finance Academy	X	1	1	0	1	0	1	0.2	\$ 831.63	100%	100%	0%	0%	100%	\$88.75	0.2
Maintenance & Light Repair, G-1	VHS	Finance Academy	X	33	33	0	0	33	33	0.2	\$ -	100%	0%	100%	0%	100%	\$2,928.75	0.0
	HHS	Automotive Service Tech	X	1	1	0	1	0	1	0.2	\$ 831.63	100%	100%	0%	0%	100%	\$124.55	0.2
Microsoft - MTA HTML5	PBMS	Web App Dev & Prog	X	1	1	0	1	0	1	0.2	\$ 831.63	100%	100%	0%	0%	100%	\$123.08	0.2
	PBMS	Game & Simulation	X	68	68	0	4	65	69	0.2	\$ 3,326.50	100%	6%	94%	0%	101%	\$1,043.86	0.8
Microsoft - MTA Mobility & Devices	HHS	Tech Support - Client	X	10	10	0	2	8	10	0.1	\$ 831.63	100%	20%	80%	0%	100%	\$440.00	0.2
Microsoft - MTA Software Dev Fund	PBMS	Game & Simulation	X	46	46	0	1	45	46	0.1	\$ 415.81	100%	2%	98%	0%	100%	\$706.14	0.1
MOS Bundle	AHS	Digital Info Tech	X	24	24	0	20	4	24	0.2	\$ 16,632.51	100%	83%	17%	0%	100%	\$2,626.97	4.0
	AHS	Bus Software App	X	10	10	0	10	0	10	0.2	\$ 8,316.25	100%	100%	0%	0%	100%	\$1,094.57	2.0
	AHS	Digital Info Tech	X	7	7	0	3	4	7	0.2	\$ 2,494.88	100%	43%	57%	0%	100%	\$537.25	0.6
	CBHS	Int'l Business	X	85	85	0	70	15	85	0.2	\$ 58,213.78	100%	82%	18%	0%	100%	\$5,179.07	14.0
	CHS	Digital Info Tech	X	8	8	0	8	0	8	0.2	\$ 6,653.00	100%	100%	0%	0%	100%	\$1,531.43	1.6
	CHS	Digital Info Tech	X	16	16	0	16	0	16	0.2	\$ 13,306.01	100%	100%	0%	0%	100%	\$3,062.86	3.2
	EGHS	Digital Info Tech	X	3	3	0	3	0	3	0.2	\$ 2,494.88	100%	100%	0%	0%	100%	\$2,197.50	0.6
	EGHS	Bus Software App	X	1	1	0	1	0	1	0.2	\$ 831.63	100%	100%	0%	0%	100%	\$732.50	0.2
	HHS	Digital Info Tech	X	5	5	0	5	0	5	0.2	\$ 4,158.13	100%	100%	0%	0%	100%	\$534.63	1.0
	HHS	Drafting	X	1	1	0	0	1	1	0.2	\$ -	100%	0%	100%	0%	100%	\$67.50	0.0
	HHS	Bus Software App	X	26	26	0	24	2	26	0.2	\$ 19,959.01	100%	92%	8%	0%	100%	\$2,780.06	4.8
	HHS	Digital Info Tech	X	47	47	0	39	8	47	0.2	\$ 32,433.39	100%	83%	17%	0%	100%	\$5,025.49	7.8
	HHS	Digital Information Tech	X	26	26	0	26	0	26	0.2	\$ 21,622.26	100%	100%	0%	0%	100%	\$2,780.06	5.2
	MHS	Digital Info Tech	X	19	19	0	19	0	19	0.2	\$ 15,800.88	100%	100%	0%	0%	100%	\$2,081.12	3.8
	MHS	Finance Academy	X	1	1	0	1	0	1	0.2	\$ 831.63	100%	100%	0%	0%	100%	\$54.55	0.2
	MHS	Finance Academy	X	15	15	0	15	0	15	0.2	\$ 12,474.38	100%	100%	0%	0%	100%	\$818.20	3.0
	MHS	Digital Info Tech	X	88	88	0	88	0	88	0.2	\$ 73,183.03	100%	100%	0%	0%	100%	\$9,638.88	17.6
	MHS	Finance Academy	X	18	18	0	18	0	18	0.2	\$ 14,969.26	100%	100%	0%	0%	100%	\$981.85	3.6
	MIHS	Bus Software App	X	14	14	0	14	0	14	0.2	\$ 11,642.76	100%	100%	0%	0%	100%	\$1,766.22	2.8
	MIHS	Digital Info Tech	X	18	18	0	18	0	18	0.2	\$ 14,969.26	100%	100%	0%	0%	100%	\$2,270.85	3.6
	MIHS	Hosp & Tourism	X	7	7	0	7	0	7	0.2	\$ 5,821.38	100%	100%	0%	0%	100%	\$120.11	1.4
	MIHS	Marketing Management	X	4	4	0	3	1	4	0.2	\$ 2,494.88	100%	75%	25%	0%	100%	\$68.64	0.6
	RHS	Hosp & Tourism	X	28	28	0	25	3	28	0.2	\$ 20,790.63	100%	89%	11%	0%	100%	\$1,164.80	5.0
	SHS	Digital Info Tech	X	4	4	0	4	0	4	0.2	\$ 3,326.50	100%	100%	0%	0%	100%	\$470.00	0.8
	SHS	Bus Software App	X	14	14	0	13	1	14	0.2	\$ 10,811.13	100%	93%	7%	0%	100%	\$1,645.00	2.6
	SCHS	Bus Software App	X	13	13	0	13	0	13	0.2	\$ 10,811.13	100%	100%	0%	0%	100%	\$1,846.00	2.6
	SCHS	Digital Info Tech	X	6	6	0	6	0	6	0.2	\$ 4,989.75	100%	100%	0%	0%	100%	\$852.00	1.2
	THS	Digital Info Tech	X	29	29	0	20	9	29	0.2	\$ 16,632.51	100%	69%	31%	0%	100%	\$1,263.26	4.0
	THS	Digital Info Tech	X	37	37	0	37	0	37	0.2	\$ 30,770.14	100%	100%	0%	0%	100%	\$1,611.74	7.4
	VHS	Digital Media/MM	X	1	1	0	1	0	1	0.2	\$ 831.63	100%	100%	0%	0%	100%	\$47.81	0.2
	VHS	Comm Tech	X	1	1	0	1	0	1	0.2	\$ 831.63	100%	100%	0%	0%	100%	\$47.81	0.2
	VHS	Bus Software App	X	1	1	0	1	0	1	0.2	\$ 831.63	100%	100%	0%	0%	100%	\$88.75	0.2
	VHS	Digital Info Tech	X	23	23	0	22	1	23	0.2	\$ 18,295.76	100%	96%	4%	0%	100%	\$2,041.25	4.4
VHS	Finance Academy	X	37	37	0	36	1	37	0.2	\$ 29,938.51	100%	97%	3%	0%	100%	\$3,283.75	7.2	
VHS	Bus Software App	X	3	3	0	2	1	3	0.2	\$ 1,663.25	100%	67%	33%	0%	100%	\$266.25	0.4	
VHS	Digital Info Tech	X	29	29	0	21	8	29	0.2	\$ 17,464.13	100%	72%	28%	0%	100%	\$2,573.75	4.2	
VHS	Finance Academy	X	27	27	0	26	1	27	0.2	\$ 21,622.26	100%	96%	4%	0%	100%	\$2,396.25	5.2	

**2016-17 Industry Certification  
HS Results by Assessment**

Assessment	School	Program	School Grade	# Students Identified	# Participants	# In Progress	# Passing	# Failing	# Completing Participants	Funding Weights	Potential Funding \$	% Participants	% Passing	% Failing	% In Progress	% Completing Participants	Cost of Assessments & Test Prep Used	Potential Bonus FTE Calculation
MS Office Master	AHS	Digital Info Tech	X	1	1	0	1	0	1	0.2	\$ 831.63	100%	100%	0%	0%	100%	\$109.46	0.2
	CBHS	Int'l Business	X	1	1	0	1	0	1	0.2	\$ 831.63	100%	100%	0%	0%	100%	\$60.93	0.2
	CHS	Digital Info Tech	X	1	1	0	1	0	1	0.2	\$ 831.63	100%	100%	0%	0%	100%	\$191.43	0.2
	MHS	Finance Academy	X	1	1	0	1	0	1	0.2	\$ 831.63	100%	100%	0%	0%	100%	\$54.55	0.2
	SCHS	Bus Software App	X	1	1	0	1	0	1	0.2	\$ 831.63	100%	100%	0%	0%	100%	\$142.00	0.2
	VHS	Digital Info Tech	X	1	1	0	1	0	1	0.2	\$ 831.63	100%	100%	0%	0%	100%	\$88.75	0.2
	VHS	Finance Academy	X	4	4	0	4	0	4	0.2	\$ 3,326.50	100%	100%	0%	0%	100%	\$355.00	0.8
	VHS	Bus Software App	X	2	2	0	2	0	2	0.2	\$ 1,663.25	100%	100%	0%	0%	100%	\$177.50	0.4
National CDA	VHS	Digital Info Tech	X	2	2	0	2	0	2	0.2	\$ 1,663.25	100%	100%	0%	0%	100%	\$177.50	0.4
	EGHS	Early Childhood Ed	X	2	2	0	2	0	2	0.2	\$ 1,663.25	100%	100%	0%	0%	100%	\$850.00	0.4
	MIHS	Early Childhood Ed	X	3	3	0	3	0	3	0.2	\$ 2,494.88	100%	100%	0%	0%	100%	\$1,275.00	0.6
	PBMS	Early Childhood Ed	X	6	6	0	5	1	6	0.2	\$ 4,158.13	100%	83%	17%	0%	100%	\$2,550.00	1.0
	SHS	Early Childhood Ed	X	2	2	0	2	0	2	0.2	\$ 1,663.25	100%	100%	0%	0%	100%	\$850.00	0.4
NCCER	VHS	Early Childhood Ed	X	1	1	0	1	0	1	0.2	\$ 831.63	100%	100%	0%	0%	100%	\$425.00	0.2
	SCHS	A/C Refrig & Heat	X	14	14	0	14	0	14	0.2	\$ 11,642.76	100%	100%	0%	0%	100%	\$1,777.94	2.8
NOCTI - Apparel & Text Prod & Mer	CBHS	Fashion Design Services		5	5	0	2	3	5	0	\$ -	100%	40%	60%	0%	100%	\$210.00	0.0
	MHS	Fashion Design Services		8	8	0	5	3	8	0.0	\$ -	100%	63%	38%	0%	100%	\$220.00	0.0
	PBMS	Fashion Design Services		16	16	0	15	1	16	0	\$ -	100%	94%	6%	0%	100%	\$612.00	0.0
	RHS	Fashion Design Services		2	2	0	2	0	2	0	\$ -	100%	100%	0%	0%	100%	\$44.00	0.0
	SHS	Fashion Design Services		17	17	0	17	0	17	0	\$ -	100%	100%	0%	0%	100%	\$671.00	0.0
	THS	Fashion Design Services		7	7	0	6	1	7	0	\$ -	100%	86%	14%	0%	100%	\$260.00	0.0
NOCTI - Criminal Justice	PBMS	Criminal Justice		22	22	0	21	1	22	0	\$ -	100%	95%	5%	0%	100%	\$484.00	0.0
	RHS	Criminal Justice		14	14	0	13	1	14	0	\$ -	100%	93%	7%	0%	100%	\$622.09	0.0
ParaPro	SCHS	Teacher Assisting		15	15	0	13	2	15	0	\$ -	100%	87%	13%	0%	100%	\$825.00	0.0
ProStart Certificate of Achievement	BHS	Culinary Arts	X	5	5	0	5	0	5	0.2	\$ 4,158.13	100%	100%	0%	0%	100%	\$199.76	1.0
	BHS	Culinary Arts	X	10	10	0	10	0	10	0.2	\$ 8,316.25	100%	100%	0%	0%	100%	\$399.51	2.0
	PBMS	Culinary Arts	X	2	2	0	2	0	2	0.2	\$ 1,663.25	100%	100%	0%	0%	100%	\$99.89	0.4
SafeStaff Food Handler Certification	BHS	Culinary Arts		61	61	0	61	0	61	0	\$ -	100%	100%	0%	0%	100%	\$2,437.03	0.0
	BHS	Culinary Arts		59	59	0	59	0	59	0	\$ -	100%	100%	0%	0%	100%	\$2,357.12	0.0
	CHS	Culinary Arts		110	110	0	110	0	110	0	\$ -	100%	100%	0%	0%	100%	\$0.00	0.0
	MHS	Culinary Arts		55	55	0	55	0	55	0.0	\$ -	100%	100%	0%	0%	100%	\$171.11	0.0
	MHS	Culinary Arts		80	80	0	80	0	80	0.0	\$ -	100%	100%	0%	0%	100%	\$248.89	0.0
	PBMS	Culinary Arts		60	60	0	60	0	60	0	\$ -	100%	100%	0%	0%	100%	\$0.00	0.0
	THS	Culinary Arts		79	79	0	77	2	79	0	\$ -	100%	97%	3%	0%	100%	\$0.00	0.0
ServSafe Manager	AHS	Food Science	X	40	40	0	21	19	40	0.2	\$ 17,464.13	100%	53%	48%	0%	100%	\$389.70	4.2
	BHS	Culinary Arts	X	57	57	0	39	18	57	0.2	\$ 32,433.39	100%	68%	32%	0%	100%	\$2,277.22	7.8
	BHS	Culinary Arts	X	58	58	0	42	16	58	0.2	\$ 34,928.27	100%	72%	28%	0%	100%	\$2,317.17	8.4
	CHS	Culinary Arts	X	25	25	0	6	19	25	0.2	\$ 4,989.75	100%	24%	76%	0%	100%	\$1,939.30	1.2
	HHS	Food Science	X	53	53	0	7	46	53	0.2	\$ 5,821.38	100%	13%	87%	0%	100%	\$342.50	1.4
	MHS	Culinary Arts	X	43	43	0	31	12	43	0.2	\$ 25,780.39	100%	72%	28%	0%	100%	\$4,774.94	6.2
	MHS	Food Science	X	21	21	0	21	0	21	0.2	\$ 17,464.13	100%	100%	0%	0%	100%	\$813.44	4.2
	MIHS	Food Science	X	11	11	0	7	4	11	0.2	\$ 5,821.38	100%	64%	36%	0%	100%	\$1,616.08	1.4
	PBMS	Culinary Arts	X	31	31	0	27	4	31	0.2	\$ 22,453.89	100%	87%	13%	0%	100%	\$1,548.36	5.4
	SHS	Food Science	X	9	9	0	0	9	9	0.2	\$ -	100%	0%	100%	0%	100%	\$808.04	0.0
	SCHS	Food Science	X	13	13	0	1	12	13	0.2	\$ 831.63	100%	8%	92%	0%	100%	\$571.00	0.2
	THS	Culinary Arts	X	51	51	0	36	15	51	0.2	\$ 29,938.51	100%	71%	29%	0%	100%	\$3,296.50	7.2
	VHS	Food Science	X	22	22	0	16	6	22	0.2	\$ 13,306.01	100%	73%	27%	0%	100%	\$535.00	3.2



**2016-17 Industry Certification  
HS Results by Assessment**

Assessment	School	Program	School Grade	# Students Identified	# Participants	# In Progress	# Passing	# Failing	# Completing Participants	Funding Weights	Potential Funding \$	% Participants	% Passing	% Failing	% In Progress	% Completing Participants	Cost of Assessments & Test Prep Used	Potential Bonus FTE Calculation
Solidworks	BHS	Engineering Technology	X	33	33	0	11	22	33	0.2	\$ 9,147.88	100%	33%	67%	0%	100%	\$2,443.83	2.2
	BHS	Applied Engineering	X	1	1	0	1	0	1	0.2	\$ 831.63	100%	100%	0%	0%	100%	\$74.06	0.2
	HHS	Advanced Manufacturing	X	14	14	0	2	12	14	0.2	\$ 1,663.25	100%	14%	86%	0%	100%	\$275.00	0.4
	MHS	Engineering Technology	X	50	50	0	40	10	50	0.2	\$ 33,265.02	100%	80%	20%	0%	100%	\$3,318.00	8.0
	PBMS	Engineering Technology	X	34	34	0	14	20	34	0.2	\$ 11,642.76	100%	41%	59%	0%	100%	\$267.14	2.8
	SCHS	Engineering Technology	X	17	17	0	16	1	17	0.2	\$ 13,306.01	100%	94%	6%	0%	100%	\$275.00	3.2
Staff Credential	EGHS	Early Childhood Ed		15	15	0	15	0	15	0	\$ -	100%	100%	0%	0%	100%	\$150.00	0.0
	MIHS	Early Childhood Ed		12	12	0	12	0	12	0	\$ -	100%	100%	0%	0%	100%	\$120.00	0.0
	PBMS	Early Childhood Ed		8	8	0	8	0	8	0	\$ -	100%	100%	0%	0%	100%	\$80.00	0.0
	SHS	Early Childhood Ed		12	12	0	12	0	12	0	\$ -	100%	100%	0%	0%	100%	\$80.00	0.0
	VHS	Early Childhood Ed		13	13	0	13	0	13	0	\$ -	100%	100%	0%	0%	100%	\$130.00	0.0
Wastewater Treatment Plant Oper C	HHS	Environmental Water	X	14	14	0	4	10	14	0.1	\$ 1,663.25	100%	29%	71%	0%	100%	\$1,400.00	0.4
Water Treat Plant Oper Lvl C	HHS	Environmental Water	X	24	24	0	13	11	24	0.1	\$ 5,405.56	100%	54%	46%	0%	100%	\$2,400.00	1.3

**This page intentionally left blank.**

# Industry Certification By Program



**This page intentionally left blank.**

**2016-17 Industry Certification  
HS Results by Program**

Program	School	Assessment	School Grade	# Students Identified	# Participants	# In Progress	# Passing	# Failing	# Completing Participants	Funding Weights	Potential Funding \$	% Participants	% Passing	% Failing	% In Progress	% Completing Participants	Cost of Assessments & Test Prep Used	Potential Bonus FTE Calculation
A/C Refrig & Heat	SCHS	HVAC Excellence - A/C	X	12	12	0	12	0	12	0.2	\$ 9,979.50	100%	100%	0%	0%	100%	\$1,523.95	2.4
	SCHS	HVAC Excellence - Electrical	X	8	8	0	8	0	8	0.2	\$ 6,653.00	100%	100%	0%	0%	100%	\$1,015.97	1.6
	SCHS	Air Conditioning Service Tech	X	1	1	0	1	0	1	0.2	\$ 831.63	100%	100%	0%	0%	100%	\$127.00	0.2
	SCHS	NCCER	X	14	14	0	14	0	14	0.2	\$ 11,642.76	100%	100%	0%	0%	100%	\$1,777.94	2.8
Accounting	CHS	Intuit: Quick Books	X	26	26	0	1	25	26	0.2	\$ 831.63	100%	4%	96%	0%	100%	\$960.00	0.2
Advanced Manufacturing	HHS	Solidworks	X	14	14	0	2	12	14	0.2	\$ 1,663.25	100%	14%	86%	0%	100%	\$275.00	0.4
AICE Art	EGHS	Adobe: Photoshop	X	5	5	0	0	5	5	0.1	\$ -	100%	0%	100%	0%	100%	\$176.29	0.0
AP STUD ART 2-D	WSHS	Adobe: Photoshop	X	4	4	0	3	1	4	0.1	\$ 1,247.44	100%	75%	25%	0%	100%	\$168.89	0.3
Applied Engineering	BHS	Autodesk - Certified User Inventor	X	1	1	0	1	0	1	0.2	\$ 831.63	100%	100%	0%	0%	100%	\$74.06	0.2
	BHS	Solidworks	X	1	1	0	1	0	1	0.2	\$ 831.63	100%	100%	0%	0%	100%	\$74.06	0.2
Automotive Collision	CHS	FLADA	X	36	36	0	8	28	36	0.1	\$ 3,326.50	100%	22%	78%	0%	100%	\$3,334.71	0.8
	EGHS	FLADA	X	20	20	0	13	7	20	0.1	\$ 5,405.56	100%	65%	35%	0%	100%	\$2,394.00	1.3
Automotive Service Tech	HHS	FLADA	X	27	27	0	13	14	27	0.1	\$ 5,405.56	100%	48%	52%	0%	100%	\$3,362.72	1.3
	HHS	Maintenance & Light Repair, G-1	X	1	1	0	1	0	1	0.2	\$ 831.63	100%	100%	0%	0%	100%	\$124.55	0.2
	MIHS	FLADA	X	19	19	0	10	9	19	0.1	\$ 4,158.13	100%	53%	47%	0%	100%	\$1,706.13	1.0
	RHS	FLADA	X	30	30	0	23	7	30	0.1	\$ 9,563.69	100%	77%	23%	0%	100%	\$3,102.06	2.3
	SHS	FLADA	X	34	34	0	16	18	34	0.1	\$ 6,653.00	100%	47%	53%	0%	100%	\$3,824.01	1.6
	THS	FLADA	X	17	17	0	14	3	17	0.1	\$ 5,821.38	100%	82%	18%	0%	100%	\$2,016.34	1.4
Aviation	EGHS	FAA Ground School	X	30	30	0	30	0	30	0.2	\$ 24,948.76	100%	100%	0%	0%	100%	\$1,750.00	6.0
Bus Software App	AHS	MOS Bundle	X	10	10	0	10	0	10	0.2	\$ 8,316.25	100%	100%	0%	0%	100%	\$1,094.57	2.0
	EGHS	MOS Bundle	X	1	1	0	1	0	1	0.2	\$ 831.63	100%	100%	0%	0%	100%	\$732.50	0.2
	EGHS	Adobe: Photoshop	X	1	1	0	1	0	1	0.1	\$ 415.81	100%	100%	0%	0%	100%	\$732.50	0.1
	HHS	MOS Bundle	X	26	26	0	24	2	26	0.2	\$ 19,959.01	100%	92%	8%	0%	100%	\$2,780.06	4.8
	MIHS	MOS Bundle	X	14	14	0	14	0	14	0.2	\$ 11,642.76	100%	100%	0%	0%	100%	\$1,766.22	2.8
	SHS	MOS Bundle	X	14	14	0	13	1	14	0.2	\$ 10,811.13	100%	93%	7%	0%	100%	\$1,645.00	2.6
	SCHS	MS Office Master	X	1	1	0	1	0	1	0.2	\$ 831.63	100%	100%	0%	0%	100%	\$142.00	0.2
	SCHS	MOS Bundle	X	13	13	0	13	0	13	0.2	\$ 10,811.13	100%	100%	0%	0%	100%	\$1,846.00	2.6
	VHS	MOS Bundle	X	1	1	0	1	0	1	0.2	\$ 831.63	100%	100%	0%	0%	100%	\$88.75	0.2
	VHS	MS Office Master	X	2	2	0	2	0	2	0.2	\$ 1,663.25	100%	100%	0%	0%	100%	\$177.50	0.4
	VHS	MOS Bundle	X	3	3	0	2	1	3	0.2	\$ 1,663.25	100%	67%	33%	0%	100%	\$266.25	0.4
Comm Tech	BHS	Adobe: Illustrator	X	6	6	0	6	0	6	0.1	\$ 2,494.88	100%	100%	0%	0%	100%	\$220.34	0.6
	BHS	Adobe: InDesign	X	6	6	0	6	0	6	0.1	\$ 2,494.88	100%	100%	0%	0%	100%	\$220.34	0.6
	BHS	Adobe: Photoshop	X	9	9	0	9	0	9	0.1	\$ 3,742.31	100%	100%	0%	0%	100%	\$330.50	0.9
	VHS	Adobe: InDesign	X	2	2	0	0	2	2	0.1	\$ -	100%	0%	100%	0%	100%	\$95.61	0.0
	VHS	MOS Bundle	X	1	1	0	1	0	1	0.2	\$ 831.63	100%	100%	0%	0%	100%	\$47.81	0.2
	VHS	Adobe: Illustrator	X	75	75	0	57	18	75	0.1	\$ 23,701.32	100%	76%	24%	0%	100%	\$3,585.40	5.7
	VHS	Adobe: InDesign	X	22	22	0	15	7	22	0.1	\$ 6,237.19	100%	68%	32%	0%	100%	\$1,051.72	1.5
	VHS	Adobe: Photoshop	X	55	55	0	40	15	55	0.1	\$ 16,632.51	100%	73%	27%	0%	100%	\$2,629.29	4.0

**2016-17 Industry Certification  
HS Results by Program**

Program	School	Assessment	School Grade	# Students Identified	# Participants	# In Progress	# Passing	# Failing	# Completing Participants	Funding Weights	Potential Funding \$	% Participants	% Passing	% Failing	% In Progress	% Completing Participants	Cost of Assessments & Test Prep Used	Potential Bonus FTE Calculation
Criminal Justice	PBMS	NOCTI - Criminal Justice		22	22	0	21	1	22	0	\$ -	100%	95%	5%	0%	100%	\$484.00	0.0
	RHS	ALP	X	9	9		4	5	9	0.2	\$ 3,326.50	100%	44%	56%	0%	100%	\$399.91	0.8
	RHS	NOCTI - Criminal Justice		14	14	0	13	1	14	0	\$ -	100%	93%	7%	0%	100%	\$622.09	0.0
Culinary Arts	BHS	SafeStaff Food Handler Certification		61	61	0	61	0	61	0	\$ -	100%	100%	0%	0%	100%	\$2,437.03	0.0
	BHS	ProStart Certificate of Achievement	X	5	5	0	5	0	5	0.2	\$ 4,158.13	100%	100%	0%	0%	100%	\$199.76	1.0
	BHS	ServSafe Manager	X	57	57	0	39	18	57	0.2	\$ 32,433.39	100%	68%	32%	0%	100%	\$2,277.22	7.8
	BHS	SafeStaff Food Handler Certification		59	59	0	59	0	59	0	\$ -	100%	100%	0%	0%	100%	\$2,357.12	0.0
	BHS	ProStart Certificate of Achievement	X	10	10	0	10	0	10	0.2	\$ 8,316.25	100%	100%	0%	0%	100%	\$399.51	2.0
	BHS	ServSafe Manager	X	58	58	0	42	16	58	0.2	\$ 34,928.27	100%	72%	28%	0%	100%	\$2,317.17	8.4
	CHS	SafeStaff Food Handler Certification		110	110	0	110	0	110	0	\$ -	100%	100%	0%	0%	100%	\$0.00	0.0
	CHS	ServSafe Manager	X	25	25	0	6	19	25	0.2	\$ 4,989.75	100%	24%	76%	0%	100%	\$1,939.30	1.2
	MHS	SafeStaff Food Handler Certification		55	55	0	55	0	55	0.0	\$ -	100%	100%	0%	0%	100%	\$171.11	0.0
	MHS	ServSafe Manager	X	43	43	0	31	12	43	0.2	\$ 25,780.39	100%	72%	28%	0%	100%	\$4,774.94	6.2
	MHS	SafeStaff Food Handler Certification		80	80	0	80	0	80	0.0	\$ -	100%	100%	0%	0%	100%	\$248.89	0.0
	PBMS	SafeStaff Food Handler Certification		60	60	0	60	0	60	0	\$ -	100%	100%	0%	0%	100%	\$0.00	0.0
	PBMS	ProStart Certificate of Achievement	X	2	2	0	2	0	2	0.2	\$ 1,663.25	100%	100%	0%	0%	100%	\$99.89	0.4
	PBMS	ServSafe Manager	X	31	31	0	27	4	31	0.2	\$ 22,453.89	100%	87%	13%	0%	100%	\$1,548.36	5.4
	THS	SafeStaff Food Handler Certification		79	79	0	77	2	79	0	\$ -	100%	97%	3%	0%	100%	\$0.00	0.0
THS	ServSafe Manager	X	51	51	0	36	15	51	0.2	\$ 29,938.51	100%	71%	29%	0%	100%	\$3,296.50	7.2	
Digital Info Tech	AHS	MS Office Master	X	1	1	0	1	0	1	0.2	\$ 831.63	100%	100%	0%	0%	100%	\$109.46	0.2
	AHS	MOS Bundle	X	24	24	0	20	4	24	0.2	\$ 16,632.51	100%	83%	17%	0%	100%	\$2,626.97	4.0
	AHS	MOS Bundle	X	7	7	0	3	4	7	0.2	\$ 2,494.88	100%	43%	57%	0%	100%	\$537.25	0.6
	CHS	Adobe: Photoshop	X	1	1	0	0	1	1	0.1	\$ -	100%	0%	100%	0%	100%	\$191.43	0.0
	CHS	MOS Bundle	X	8	8	0	8	0	8	0.2	\$ 6,653.00	100%	100%	0%	0%	100%	\$1,531.43	1.6
	CHS	Adobe: Photoshop	X	2	2	0	0	2	2	0.1	\$ -	100%	0%	100%	0%	100%	\$382.86	0.0
	CHS	MS Office Master	X	1	1	0	1	0	1	0.2	\$ 831.63	100%	100%	0%	0%	100%	\$191.43	0.2
	CHS	MOS Bundle	X	16	16	0	16	0	16	0.2	\$ 13,306.01	100%	100%	0%	0%	100%	\$3,062.86	3.2
	EGHS	MOS Bundle	X	3	3	0	3	0	3	0.2	\$ 2,494.88	100%	100%	0%	0%	100%	\$2,197.50	0.6
	EGHS	Adobe: Illustrator	X	1	1	0	1	0	1	0.1	\$ 415.81	100%	100%	0%	0%	100%	\$732.50	0.1
	HHS	MOS Bundle	X	5	5	0	5	0	5	0.2	\$ 4,158.13	100%	100%	0%	0%	100%	\$534.63	1.0
	HHS	MOS Bundle	X	47	47	0	39	8	47	0.2	\$ 32,433.39	100%	83%	17%	0%	100%	\$5,025.49	7.8
	MHS	MOS Bundle	X	19	19	0	19	0	19	0.2	\$ 15,800.88	100%	100%	0%	0%	100%	\$2,081.12	3.8
	MHS	MOS Bundle	X	88	88	0	88	0	88	0.2	\$ 73,183.03	100%	100%	0%	0%	100%	\$9,638.88	17.6
	MIHS	MOS Bundle	X	18	18	0	18	0	18	0.2	\$ 14,969.26	100%	100%	0%	0%	100%	\$2,270.85	3.6
	SHS	MOS Bundle	X	4	4	0	4	0	4	0.2	\$ 3,326.50	100%	100%	0%	0%	100%	\$470.00	0.8
	SCHS	MOS Bundle	X	6	6	0	6	0	6	0.2	\$ 4,989.75	100%	100%	0%	0%	100%	\$852.00	1.2
	THS	MOS Bundle	X	29	29	0	20	9	29	0.2	\$ 16,632.51	100%	69%	31%	0%	100%	\$1,263.26	4.0
	THS	MOS Bundle	X	37	37	0	37	0	37	0.2	\$ 30,770.14	100%	100%	0%	0%	100%	\$1,611.74	7.4
	VHS	MOS Bundle	X	23	23	0	22	1	23	0.2	\$ 18,295.76	100%	96%	4%	0%	100%	\$2,041.25	4.4
VHS	MS Office Master	X	1	1	0	1	0	1	0.2	\$ 831.63	100%	100%	0%	0%	100%	\$88.75	0.2	
VHS	MS Office Master	X	2	2	0	2	0	2	0.2	\$ 1,663.25	100%	100%	0%	0%	100%	\$177.50	0.4	
VHS	MOS Bundle	X	29	29	0	21	8	29	0.2	\$ 17,464.13	100%	72%	28%	0%	100%	\$2,573.75	4.2	
HHS	MOS Bundle	X	26	26	0	26	0	26	0.2	\$ 21,622.26	100%	100%	0%	0%	100%	\$2,780.06	5.2	

**2016-17 Industry Certification  
HS Results by Program**

Program	School	Assessment	School Grade	# Students Identified	# Participants	# In Progress	# Passing	# Failing	# Completing Participants	Funding Weights	Potential Funding \$	% Participants	% Passing	% Failing	% In Progress	% Completing Participants	Cost of Assessments & Test Prep Used	Potential Bonus FTE Calculation
Digital Design	BHS	Adobe: Dreamweaver	X	1	1	0	1	0	1	0.2	\$ 831.63	100%	100%	0%	0%	100%	\$36.72	0.2
Digital Design	BHS	Adobe: Flash	X	2	2	0	1	1	2	0.2	\$ 831.63	100%	50%	50%	0%	100%	\$73.45	0.2
Digital Design	BHS	Adobe: Premiere Pro	X	3	3	0	3	0	3	0.1	\$ 1,247.44	100%	100%	0%	0%	100%	\$110.17	0.3
Digital Design	BHS	Adobe: Illustrator	X	48	48	0	40	8	48	0.1	\$ 16,632.51	100%	83%	17%	0%	100%	\$1,762.69	4.0
Digital Design	BHS	Adobe: InDesign	X	29	29	0	24	5	29	0.1	\$ 9,979.50	100%	83%	17%	0%	100%	\$1,064.96	2.4
Digital Design	BHS	Adobe: Photoshop	X	15	15	0	13	2	15	0.1	\$ 5,405.56	100%	87%	13%	0%	100%	\$550.84	1.3
Digital Design	CHS	Adobe: Illustrator	X	4	4	0	0	4	4	0.1	\$ -	100%	0%	100%	0%	100%	\$297.25	0.0
Digital Design	CHS	Adobe: InDesign	X	11	11	0	0	11	11	0.1	\$ -	100%	0%	100%	0%	100%	\$817.44	0.0
Digital Design	CHS	Adobe: Photoshop	X	17	17	0	5	12	17	0.1	\$ 2,079.06	100%	29%	71%	0%	100%	\$1,263.31	0.5
Digital Design	EGHS	Autodesk - Certified User AutoCAD	X	1	1	0	0	1	1	0.2	\$ -	100%	0%	100%	0%	100%	\$35.26	0.0
Digital Design	EGHS	Adobe Certified Expert (ACE) - Premiere Pro	X	1	1	0	1	0	1	0.1	\$ 415.81	100%	100%	0%	0%	100%	\$35.26	0.1
Digital Design	EGHS	Adobe: Premiere Pro	X	5	5	0	0	5	5	0.1	\$ -	100%	0%	100%	0%	100%	\$176.29	0.0
Digital Design	EGHS	Adobe: Illustrator	X	6	6	0	1	5	6	0.1	\$ 415.81	100%	17%	83%	0%	100%	\$211.55	0.1
Digital Design	EGHS	Adobe: InDesign	X	7	7	0	3	4	7	0.1	\$ 1,247.44	100%	43%	57%	0%	100%	\$246.81	0.3
Digital Design	EGHS	Adobe: Photoshop	X	1	1	0	1	0	1	0.1	\$ 415.81	100%	100%	0%	0%	100%	\$35.26	0.1
Digital Design	EHS	Adobe: Illustrator	X	41	41	0	21	20	41	0.1	\$ 8,732.07	100%	51%	49%	0%	100%	\$875.79	2.1
Digital Design	EHS	Adobe: InDesign	X	46	46	0	37	9	46	0.1	\$ 15,385.07	100%	80%	20%	0%	100%	\$982.59	3.7
Digital Design	EHS	Adobe: Photoshop	X	43	43	0	31	12	43	0.1	\$ 12,890.19	100%	72%	28%	0%	100%	\$918.51	3.1
Digital Design	MHS	Adobe: InDesign	X	16	16	0	10	6	16	0.1	\$ 4,158.13	100%	63%	38%	0%	100%	\$665.60	1.0
Digital Design	MHS	Adobe: Photoshop	X	84	84	0	40	44	84	0.1	\$ 16,632.51	100%	48%	52%	0%	100%	\$3,494.40	4.0
Digital Design	MIHS	Adobe: Dreamweaver	X	1	1	0	1	0	1	0.2	\$ 831.63	100%	100%	0%	0%	100%	\$37.14	0.2
Digital Design	MIHS	Adobe: Premiere Pro	X	6	6	0	6	0	6	0.1	\$ 2,494.88	100%	100%	0%	0%	100%	\$222.83	0.6
Digital Design	MIHS	Adobe: Illustrator	X	18	18	0	18	0	18	0.1	\$ 7,484.63	100%	100%	0%	0%	100%	\$668.49	1.8
Digital Design	MIHS	Adobe: InDesign	X	35	35	0	34	1	35	0.1	\$ 14,137.63	100%	97%	3%	0%	100%	\$1,299.85	3.4
Digital Design	MIHS	Adobe: Photoshop	X	23	23	0	22	1	23	0.1	\$ 9,147.88	100%	96%	4%	0%	100%	\$854.19	2.2
Digital Design	RHS	Adobe: Illustrator	X	9	9	0	9	0	9	0.1	\$ 3,742.31	100%	100%	0%	0%	100%	\$450.30	0.9
Digital Design	RHS	Adobe: InDesign	X	42	42	0	24	18	42	0.1	\$ 9,979.50	100%	57%	43%	0%	100%	\$2,101.41	2.4
Digital Design	RHS	Adobe: Photoshop	X	98	98	0	69	29	98	0.1	\$ 28,691.08	100%	70%	30%	0%	100%	\$4,903.29	6.9
Digital Design	THS	Adobe: Dreamweaver	X	1	1	0	1	0	1	0.2	\$ 831.63	100%	100%	0%	0%	100%	\$37.24	0.2
Digital Design	THS	Adobe: Flash	X	10	10	0	8	2	10	0.2	\$ 6,653.00	100%	80%	20%	0%	100%	\$372.37	1.6
Digital Design	THS	Adobe: Illustrator	X	32	32	0	27	5	32	0.1	\$ 11,226.94	100%	84%	16%	0%	100%	\$1,191.60	2.7
Digital Design	THS	Adobe: InDesign	X	64	64	0	37	27	64	0.1	\$ 15,385.07	100%	58%	42%	0%	100%	\$2,383.20	3.7
Digital Design	THS	Adobe: Photoshop	X	24	24	0	24	0	24	0.1	\$ 9,979.50	100%	100%	0%	0%	100%	\$893.70	2.4
Digital Design	THS	Adobe: Illustrator	X	3	3	0	3	0	3	0.1	\$ 1,247.44	100%	100%	0%	0%	100%	\$111.71	0.3
Digital Design	THS	Adobe: InDesign	X	7	7	0	6	1	7	0.1	\$ 2,494.88	100%	86%	14%	0%	100%	\$260.66	0.6
Digital Design	THS	Adobe: Photoshop	X	29	29	0	25	4	29	0.1	\$ 10,395.32	100%	86%	14%	0%	100%	\$1,079.89	2.5
Digital Design	THS	Adobe: Dreamweaver	X	1	1	0	1	0	1	0.2	\$ 831.63	100%	100%	0%	0%	100%	\$37.24	0.2
Digital Design	THS	Adobe: Illustrator	X	1	1	0	1	0	1	0.1	\$ 415.81	100%	100%	0%	0%	100%	\$37.24	0.1
Digital Design	THS	Adobe: InDesign	X	2	2	0	0	2	2	0.1	\$ -	100%	0%	100%	0%	100%	\$74.47	0.0
Digital Design	THS	Adobe: Photoshop	X	45	45	0	28	17	45	0.1	\$ 11,642.76	100%	62%	38%	0%	100%	\$1,675.68	2.8

**2016-17 Industry Certification  
HS Results by Program**

Program	School	Assessment	School Grade	# Students Identified	# Participants	# In Progress	# Passing	# Failing	# Completing Participants	Funding Weights	Potential Funding \$	% Participants	% Passing	% Failing	% In Progress	% Completing Participants	Cost of Assessments & Test Prep Used	Potential Bonus FTE Calculation
Digital Media/MM	AHS	Adobe:Illustrator	X	45	45	0	13	32	45	0.1	\$ 5,405.56	100%	29%	71%	0%	100%	\$2,168.80	1.3
	AHS	Adobe:InDesign	X	1	1	0	1	0	1	0.1	\$ 415.81	100%	100%	0%	0%	100%	\$48.20	0.1
	AHS	Adobe:Photoshop	X	87	87	0	31	56	87	0.1	\$ 12,890.19	100%	36%	64%	0%	100%	\$4,193.01	3.1
	EGHS	Adobe:Premiere Pro	X	24	24	0	6	18	24	0.1	\$ 2,494.88	100%	25%	75%	0%	100%	\$846.21	0.6
	EGHS	Adobe:Illustrator	X	35	35	0	6	29	35	0.1	\$ 2,494.88	100%	17%	83%	0%	100%	\$1,234.05	0.6
	EGHS	Adobe:InDesign	X	6	6	0	2	4	6	0.1	\$ 831.63	100%	33%	67%	0%	100%	\$211.55	0.2
	EGHS	Adobe:Photoshop	X	83	83	0	25	58	83	0.1	\$ 10,395.32	100%	30%	70%	0%	100%	\$2,926.47	2.5
	HHS	Adobe:Photoshop	X	42	42	0	8	34	42	0.1	\$ 3,326.50	100%	19%	81%	0%	100%	\$4,490.86	0.8
	PBMS	Adobe:Photoshop	X	46	46	0	3	43	46	0.1	\$ 1,247.44	100%	7%	93%	0%	100%	\$2,815.00	0.3
	SHS	Adobe:Premiere Pro	X	1	1	0	1	0	1	0.1	\$ 415.81	100%	100%	0%	0%	100%	\$39.94	0.1
	SHS	Adobe:Illustrator	X	1	1	0	0	1	1	0.1	\$ -	100%	0%	100%	0%	100%	\$39.94	0.0
	SHS	Adobe:InDesign	X	1	1	0	1	0	1	0.1	\$ 415.81	100%	100%	0%	0%	100%	\$39.94	0.1
	SHS	Adobe:Photoshop	X	1	1	0	1	0	1	0.1	\$ 415.81	100%	100%	0%	0%	100%	\$39.94	0.1
	SHS	Adobe:Illustrator	X	25	25	0	11	14	25	0.1	\$ 4,573.94	100%	44%	56%	0%	100%	\$998.53	1.1
	SHS	Adobe:InDesign	X	20	20	0	6	14	20	0.1	\$ 2,494.88	100%	30%	70%	0%	100%	\$798.82	0.6
	SHS	Adobe:Photoshop	X	36	36	0	18	18	36	0.1	\$ 7,484.63	100%	50%	50%	0%	100%	\$1,437.88	1.8
	VHS	Adobe:Premiere Pro	X	48	48	0	22	26	48	0.1	\$ 9,147.88	100%	46%	54%	0%	100%	\$2,294.65	2.2
	VHS	Adobe:InDesign	X	45	45	0	40	5	45	0.1	\$ 16,632.51	100%	89%	11%	0%	100%	\$2,151.24	4.0
	VHS	Adobe:Photoshop	X	54	54	0	43	11	54	0.1	\$ 17,879.95	100%	80%	20%	0%	100%	\$2,581.49	4.3
VHS	MOS Bundle	X	1	1	0	1	0	1	0.2	\$ 831.63	100%	100%	0%	0%	100%	\$47.81	0.2	
DIGITAL ART IMG2	WSHS	Adobe:Photoshop	X	14	14	0	4	10	14	0.1	\$ 1,663.25	100%	29%	71%	0%	100%	\$591.11	0.4
Drafting	BHS	Autodesk - Certified User Revit	X	36	36	0	36	0	36	0.2	\$ 29,938.51	100%	100%	0%	0%	100%	\$1,637.50	7.2
	BHS	Autodesk - Certified User Inventor	X	33	33	0	33	0	33	0.2	\$ 27,443.64	100%	100%	0%	0%	100%	\$1,501.04	6.6
	BHS	Autodesk - Inventor Professional	X	3	3	0	1	2	3	0.2	\$ 831.63	100%	33%	67%	0%	100%	\$136.46	0.2
	CHS	Autodesk - Certified User AutoCAD	X	22	22	0	11	11	22	0.2	\$ 9,147.88	100%	50%	50%	0%	100%	\$920.00	2.2
	HHS	Autodesk - Certified User AutoCAD	X	19	19	0	5	14	19	0.2	\$ 4,158.13	100%	26%	74%	0%	100%	\$1,282.50	1.0
	HHS	MOS Bundle	X	1	1	0	0	1	1	0.2	\$ -	100%	0%	100%	0%	100%	\$67.50	0.0
	SCHS	Autodesk - Certified User AutoCAD	X	26	26	0	26	0	26	0.2	\$ 21,622.26	100%	100%	0%	0%	100%	\$397.65	5.2
	SCHS	Autodesk - Certified User Revit	X	23	23	0	23	0	23	0.2	\$ 19,127.38	100%	100%	0%	0%	100%	\$351.76	4.6
	SCHS	Autodesk - Certified User Inventor	X	19	19	0	19	0	19	0.2	\$ 15,800.88	100%	100%	0%	0%	100%	\$290.59	3.8
Early Childhood Ed	EGHS	National CDA	X	2	2	0	2	0	2	0.2	\$ 1,663.25	100%	100%	0%	0%	100%	\$850.00	0.4
	EGHS	Intro to Childcare Training Certificate		15	15	0	14	1	15	0	\$ -	100%	93%	7%	0%	100%	\$0.00	0.0
	EGHS	Staff Credential		15	15	0	15	0	15	0	\$ -	100%	100%	0%	0%	100%	\$150.00	0.0
	EGHS	CPR/First Aid		15	15	0	15	0	15	0	\$ -	100%	100%	0%	0%	100%	\$60.00	0.0
	MIHS	National CDA	X	3	3	0	3	0	3	0.2	\$ 2,494.88	100%	100%	0%	0%	100%	\$1,275.00	0.6
	MIHS	Intro to Childcare Training Certificate		12	12	0	12	0	12	0	\$ -	100%	100%	0%	0%	100%	\$0.00	0.0
	MIHS	Staff Credential		12	12	0	12	0	12	0	\$ -	100%	100%	0%	0%	100%	\$120.00	0.0
	MIHS	CPR/First Aid		12	12	0	12	0	12	0	\$ -	100%	100%	0%	0%	100%	\$120.00	0.0
	PBMS	Intro to Childcare Training Certificate		8	8	0	6	2	8	0	\$ -	100%	75%	25%	0%	100%	\$0.00	0.0
	PBMS	Staff Credential		8	8	0	8	0	8	0	\$ -	100%	100%	0%	0%	100%	\$80.00	0.0
	PBMS	CPR/First Aid		8	8	0	8	0	8	0	\$ -	100%	100%	0%	0%	100%	\$80.00	0.0
	PBMS	National CDA	X	6	6	0	5	1	6	0.2	\$ 4,158.13	100%	83%	17%	0%	100%	\$2,550.00	1.0
	SHS	Intro to Childcare Training Certificate		12	12	0	12	0	12	0	\$ -	100%	100%	0%	0%	100%	\$0.00	0.0
	SHS	Staff Credential		12	12	0	12	0	12	0	\$ -	100%	100%	0%	0%	100%	\$120.00	0.0
	SHS	CPR/First Aid		12	12	0	12	0	12	0	\$ -	100%	100%	0%	0%	100%	\$48.00	0.0
	SHS	National CDA	X	2	2	0	2	0	2	0.2	\$ 1,663.25	100%	100%	0%	0%	100%	\$850.00	0.4
	VHS	Intro to Childcare Training Certificate		13	13	0	11	2	13	0	\$ -	100%	85%	15%	0%	100%	\$0.00	0.0
	VHS	Staff Credential		13	13	0	13	0	13	0	\$ -	100%	100%	0%	0%	100%	\$130.00	0.0
	VHS	CPR/First Aid		13	13	0	13	0	13	0	\$ -	100%	100%	0%	0%	100%	\$52.00	0.0
VHS	National CDA	X	1	1	0	1	0	1	0.2	\$ 831.63	100%	100%	0%	0%	100%	\$425.00	0.2	



**2016-17 Industry Certification  
HS Results by Program**

Program	School	Assessment	School Grade	# Students Identified	# Participants	# In Progress	# Passing	# Failing	# Completing Participants	Funding Weights	Potential Funding \$	% Participants	% Passing	% Failing	% In Progress	% Completing Participants	Cost of Assessments & Test Prep Used	Potential Bonus FTE Calculation
Emergency Medical Responder	AHS	EMR	X	39	39	0	34	5	39	0.1	\$ 14,137.63	100%	87%	13%	0%	100%	\$4,900.00	3.4
	AHS	CPR/AED/BLS for Healthcare Providers		39	39	0	39	0	39	0	\$ -	100%	100%	0%	0%	100%	\$156.00	0.0
	MHS	EMR	X	22	22	0	8	14	22	0.1	\$ 3,326.50	100%	36%	64%	0%	100%	\$2,300.00	0.8
Engineering Technology	BHS	Autodesk - Certified User Inventor	X	1	1	0	1	0	1	0.2	\$ 831.63	100%	100%	0%	0%	100%	\$74.06	0.2
	BHS	Solidworks	X	33	33	0	11	22	33	0.2	\$ 9,147.88	100%	33%	67%	0%	100%	\$2,443.83	2.2
	MHS	Solidworks	X	50	50	0	40	10	50	0.2	\$ 33,265.02	100%	80%	20%	0%	100%	\$3,318.00	8.0
	PBMS	Autodesk - Certified User Revit	X	1	1	0	1	0	1	0.2	\$ 831.63	100%	100%	0%	0%	100%	\$7.86	0.2
	PBMS	Solidworks	X	34	34	0	14	20	34	0.2	\$ 11,642.76	100%	41%	59%	0%	100%	\$267.14	2.8
	SCHS	Solidworks	X	17	17	0	16	1	17	0.2	\$ 13,306.01	100%	94%	6%	0%	100%	\$275.00	3.2
Environmental Water	HHS	Wastewater Treatment Plant Oper C	X	14	14	0	4	10	14	0.1	\$ 1,663.25	100%	29%	71%	0%	100%	\$1,400.00	0.4
	HHS	Water Treat Plant Oper Lvl C	X	24	24	0	13	11	24	0.1	\$ 5,405.56	100%	54%	46%	0%	100%	\$2,400.00	1.3
Fashion Design Services	CBHS	NOCTI - Apparel & Text Prod & Mer		5	5	0	2	3	5	0	\$ -	100%	40%	60%	0%	100%	\$210.00	0.0
	MHS	NOCTI - Apparel & Text Prod & Mer		8	8	0	5	3	8	0.0	\$ -	100%	63%	38%	0%	100%	\$220.00	0.0
	PBMS	NOCTI - Apparel & Text Prod & Mer		16	16	0	15	1	16	0	\$ -	100%	94%	6%	0%	100%	\$612.00	0.0
	RHS	NOCTI - Apparel & Text Prod & Mer		2	2	0	2	0	2	0	\$ -	100%	100%	0%	0%	100%	\$44.00	0.0
	SHS	NOCTI - Apparel & Text Prod & Mer		17	17	0	17	0	17	0	\$ -	100%	100%	0%	0%	100%	\$671.00	0.0
	THS	NOCTI - Apparel & Text Prod & Mer		7	7	0	6	1	7	0	\$ -	100%	86%	14%	0%	100%	\$260.00	0.0
Finance Academy	MHS	MOS Bundle	X	1	1	0	1	0	1	0.2	\$ 831.63	100%	100%	0%	0%	100%	\$54.55	0.2
	MHS	Intuit: Quick Books	X	18	18	0	5	13	18	0.2	\$ 4,158.13	100%	28%	72%	0%	100%	\$981.85	1.0
	MHS	MOS Bundle	X	15	15	0	15	0	15	0.2	\$ 12,474.38	100%	100%	0%	0%	100%	\$818.20	3.0
	MHS	MOS Bundle	X	18	18	0	18	0	18	0.2	\$ 14,969.26	100%	100%	0%	0%	100%	\$981.85	3.6
	MHS	MS Office Master	X	1	1	0	1	0	1	0.2	\$ 831.63	100%	100%	0%	0%	100%	\$54.55	0.2
	VHS	Intuit: Quick Books	X	1	1	0	1	0	1	0.2	\$ 831.63	100%	100%	0%	0%	100%	\$88.75	0.2
	VHS	MOS Bundle	X	37	37	0	36	1	37	0.2	\$ 29,938.51	100%	97%	3%	0%	100%	\$3,283.75	7.2
	VHS	MS Office Master	X	4	4	0	4	0	4	0.2	\$ 3,326.50	100%	100%	0%	0%	100%	\$355.00	0.8
	VHS	Intuit: Quick Books	X	33	33	0	0	33	33	0.2	\$ -	100%	0%	100%	0%	100%	\$2,928.75	0.0
Food Science	VHS	MOS Bundle	X	27	27	0	26	1	27	0.2	\$ 21,622.26	100%	96%	4%	0%	100%	\$2,396.25	5.2
	AHS	ServSafe Manager	X	40	40	0	21	19	40	0.2	\$ 17,464.13	100%	53%	48%	0%	100%	\$389.70	4.2
	HHS	ServSafe Manager	X	53	53	0	7	46	53	0.2	\$ 5,821.38	100%	13%	87%	0%	100%	\$342.50	1.4
	MHS	ServSafe Manager	X	21	21	0	21	0	21	0.2	\$ 17,464.13	100%	100%	0%	0%	100%	\$813.44	4.2
	MIHS	ServSafe Manager	X	11	11	0	7	4	11	0.2	\$ 5,821.38	100%	64%	36%	0%	100%	\$1,616.08	1.4
	SHS	ServSafe Manager	X	9	9	0	0	9	9	0.2	\$ -	100%	0%	100%	0%	100%	\$808.04	0.0
	SCHS	ServSafe Manager	X	13	13	0	1	12	13	0.2	\$ 831.63	100%	8%	92%	0%	100%	\$571.00	0.2
	VHS	ServSafe Manager	X	22	22	0	16	6	22	0.2	\$ 13,306.01	100%	73%	27%	0%	100%	\$535.00	3.2
	VHS	ServSafe Manager	X	46	46	0	1	45	46	0.1	\$ 415.81	100%	2%	98%	0%	100%	\$706.14	0.1
Game & Simulation	PBMS	Microsoft - MTA Software Dev Fund	X	68	68	0	4	65	69	0.2	\$ 3,326.50	100%	6%	94%	0%	101%	\$1,043.86	0.8
GIS Technology	CBHS	GIS Technician	X	3	3	0	1	2	3	0.1	\$ 415.81	100%	33%	67%	0%	100%	\$1,850.00	0.1
Health Science	AHS	CPR/AED/BLS for Healthcare Providers		34	34	0	34	0	34	0	\$ -	100%	100%	0%	0%	100%	\$136.00	0.0
	AHS	CPR/AED/BLS for Healthcare Providers		27	27	0	27	0	27	0	\$ -	100%	100%	0%	0%	100%	\$108.00	0.0
	BHS	CMAA	X	43	43	0	43	0	43	0.1	\$ 17,879.95	100%	100%	0%	0%	100%	\$5,250.00	4.3
	BHS	CPR/AED/BLS for Healthcare Providers		56	56	0	56	0	56	0	\$ -	100%	100%	0%	0%	100%	\$224.00	0.0
	CHS	CMAA	X	14	14	0	8	6	14	0.1	\$ 3,326.50	100%	57%	43%	0%	100%	\$2,040.00	0.8
	CHS	CPR/AED/BLS for Healthcare Providers		14	14	0	14	0	14	0	\$ -	100%	100%	0%	0%	100%	\$56.00	0.0
	EGHS	CMAA	X	17	17	0	17	0	17	0.1	\$ 7,068.82	100%	100%	0%	0%	100%	\$3,400.00	1.7
	EGHS	CPR/AED/BLS for Healthcare Providers		23	23	0	23	0	23	0	\$ -	100%	100%	0%	0%	100%	\$92.00	0.0
	HHS	CMAA	X	88	88	0	61	27	88	0.1	\$ 25,364.57	100%	69%	31%	0%	100%	\$8,925.00	6.1
	HHS	CPR/AED/BLS for Healthcare Providers		46	46	0	46	0	46	0	\$ -	100%	100%	0%	0%	100%	\$129.74	0.0
	HHS	CPR/AED/BLS for Healthcare Providers		82	82	0	82	0	82	0	\$ -	100%	100%	0%	0%	100%	\$231.28	0.0
	THS	CPR/AED/BLS for Healthcare Providers		109	109	0	109	0	109	0.0	\$ -	100%	100%	0%	0%	100%	\$436.00	0.0
	PBMS	CPR/AED/BLS for Healthcare Providers		51	51	0	51	0	51	0	\$ -	100%	100%	0%	0%	100%	\$510.00	0.0
	Health Science - Dental	VHS	CMAA	X	32	32	0	32	0	32	0.1	\$ 13,306.01	100%	100%	0%	0%	100%	\$3,675.00
VHS		CPR/AED/BLS for Healthcare Providers		32	32	0	32	0	32	0	\$ -	100%	100%	0%	0%	100%	\$128.00	0.0

**2016-17 Industry Certification  
HS Results by Program**

Program	School	Assessment	School Grade	# Students Identified	# Participants	# In Progress	# Passing	# Failing	# Completing Participants	Funding Weights	Potential Funding \$	% Participants	% Passing	% Failing	% In Progress	% Completing Participants	Cost of Assessments & Test Prep Used	Potential Bonus FTE Calculation
Hosp & Tourism	MIHS	Adobe: Photoshop	X	13	13	0	2	11	13	0.1	\$ 831.63	100%	15%	85%	0%	100%	\$223.07	0.2
	MIHS	MOS Bundle	X	7	7	0	7	0	7	0.2	\$ 5,821.38	100%	100%	0%	0%	100%	\$120.11	1.4
	RHS	Adobe: Photoshop	X	22	22	0	15	7	22	0.1	\$ 6,237.19	100%	68%	32%	0%	100%	\$915.20	1.5
Interior Design	RHS	MOS Bundle	X	28	28	0	25	3	28	0.2	\$ 20,790.63	100%	89%	11%	0%	100%	\$1,164.80	5.0
	HHS	Chief Architect	X	5	5	0	4	1	5	0.2	\$ 3,326.50	100%	80%	20%	0%	100%	\$270.00	0.8
Int'l Business	VHS	Chief Architect	X	18	18	0	13	5	18	0.2	\$ 10,811.13	100%	72%	28%	0%	100%	\$2,255.00	2.6
	CBHS	MS Office Master	X	1	1	0	1	0	1	0.2	\$ 831.63	100%	100%	0%	0%	100%	\$60.93	0.2
Marine Tech	CBHS	MOS Bundle	X	85	85	0	70	15	85	0.2	\$ 58,213.78	100%	82%	18%	0%	100%	\$5,179.07	14.0
	EGHS	FLADA	X	15	15	0	11	4	15	0.1	\$ 4,573.94	100%	73%	27%	0%	100%	\$2,325.55	1.1
Marketing Management	MIHS	Autodesk - Certified User Inventor	X	1	1	0	1	0	1	0.2	\$ 831.63	100%	100%	0%	0%	100%	\$17.16	0.2
	MIHS	Adobe: Illustrator	X	1	1	0	1	0	1	0.1	\$ 415.81	100%	100%	0%	0%	100%	\$17.16	0.1
	MIHS	Adobe: InDesign	X	7	7	0	5	2	7	0.1	\$ 2,079.06	100%	71%	29%	0%	100%	\$120.11	0.5
	MIHS	Adobe: Photoshop	X	11	11	0	2	9	11	0.1	\$ 831.63	100%	18%	82%	0%	100%	\$188.75	0.2
	MIHS	MOS Bundle	X	4	4	0	3	1	4	0.2	\$ 2,494.88	100%	75%	25%	0%	100%	\$68.64	0.6
Medical Admin Specialist	SHS	Adobe: InDesign	X	6	6	0	1	5	6	0.1	\$ 415.81	100%	17%	83%	0%	100%	\$240.00	0.1
	HHS	CMAA	X	28	28	0	24	4	28	0.1	\$ 9,979.50	100%	86%	14%	0%	100%	\$2,993.91	2.4
Patient Care Assisting	HHS	CPR/AED/BLS for Healthcare Providers		28	28	0	28	0	28	0	\$ -	100%	100%	0%	0%	100%	\$78.97	0.0
	AHS	C N A	X	27	27	0	23	4	27	0.1	\$ 9,563.69	100%	85%	15%	0%	100%	\$4,340.00	2.3
	AHS	CPR/AED/BLS for Healthcare Providers		26	26	0	26	0	26	0	\$ -	100%	100%	0%	0%	100%	\$104.00	0.0
	BHS	C N A	X	12	12	0	12	0	12	0.1	\$ 4,989.75	100%	100%	0%	0%	100%	\$2,015.00	1.2
	BHS	CPR/AED/BLS for Healthcare Providers		11	11	0	11	0	11	0	\$ -	100%	100%	0%	0%	100%	\$44.00	0.0
	MHS	C N A	X	14	14	0	14	0	14	0.1	\$ 5,821.38	100%	100%	0%	0%	100%	\$2,170.00	1.4
	THS	CPR/AED/BLS for Healthcare Providers		14	14	0	14	0	14	0.0	\$ -	100%	100%	0%	0%	100%	\$56.00	0.0
	PBMS	C N A	X	12	12	0	11	2	13	0.1	\$ 4,573.94	100%	85%	15%	0%	108%	\$1,860.00	1.1
	PBMS	CPR/AED/BLS for Healthcare Providers		12	12	0	12	0	12	0	\$ -	100%	100%	0%	0%	100%	\$120.00	0.0
	RHS	C N A	X	12	12	0	11	1	12	0.1	\$ 4,573.94	100%	92%	8%	0%	100%	\$1,860.00	1.1
	RHS	CPR/AED/BLS for Healthcare Providers		69	69	0	69	0	69	0	\$ -	100%	100%	0%	0%	100%	\$276.00	0.0
	RHS	AHA First Aid		52	52	0	52	0	52	0	\$ -	100%	100%	0%	0%	100%	\$208.00	0.0
	THS	C N A	X	37	37	0	36	1	37	0.1	\$ 14,969.26	100%	97%	3%	0%	100%	\$5,890.00	3.6
	THS	CPR/AED/BLS for Healthcare Providers		37	37	0	37	0	37	0	\$ -	100%	100%	0%	0%	100%	\$148.00	0.0
THS	CPR/AED/BLS for Healthcare Providers		84	84	0	84	0	84	0	\$ -	100%	100%	0%	0%	100%	\$336.00	0.0	
PLTW - ENGINEERING	MIHS	Autodesk - Certified User Inventor	X	60	60	0	47	13	60	0.2	\$ 39,086.39	100%	78%	22%	0%	100%	\$3,860.00	9.4
Teacher Assisting	SCHS	ParaPro		15	15	0	13	2	15	0	\$ -	100%	87%	13%	0%	100%	\$825.00	0.0
Tech Support - Client	HHS	Microsoft - MTA Mobility & Devices	X	10	10	0	2	8	10	0.1	\$ 831.63	100%	20%	80%	0%	100%	\$440.00	0.2
Technical Design	AHS	Autodesk - Certified User AutoCAD	X	6	6	0	0	6	6	0.2	\$ -	100%	0%	100%	0%	100%	\$460.50	0.0
	AHS	Autodesk - Certified User Inventor	X	6	6	0	4	2	6	0.2	\$ 3,326.50	100%	67%	33%	0%	100%	\$460.50	0.8
	AHS	Autodesk Certified Professional - 3ds Max	X	1	1	0	0	1	1	0.1	\$ -	100%	0%	100%	0%	100%	\$76.75	0.0
	EGHS	Autodesk - Certified User AutoCAD	X	31	31	0	15	16	31	0.2	\$ 12,474.38	100%	48%	52%	0%	100%	\$1,063.30	3.0
	EGHS	Autodesk - Certified User Revit	X	10	10	0	10	0	10	0.2	\$ 8,316.25	100%	100%	0%	0%	100%	\$343.00	2.0
	EGHS	Autodesk - Certified User Inventor	X	9	9	0	3	6	9	0.2	\$ 2,494.88	100%	33%	67%	0%	100%	\$308.70	0.6
	PBMS	Autodesk - Certified User AutoCAD	X	4	4	0	0	4	4	0.2	\$ -	100%	0%	100%	0%	100%	\$137.22	0.0
	PBMS	Autodesk - Certified User Revit	X	17	17	0	7	10	17	0.2	\$ 5,821.38	100%	41%	59%	0%	100%	\$583.19	1.4
	PBMS	Autodesk - Certified User Inventor	X	15	15	0	14	1	15	0.2	\$ 11,642.76	100%	93%	7%	0%	100%	\$514.58	2.8
	RHS	Autodesk - Certified User AutoCAD	X	25	25	0	24	1	25	0.2	\$ 19,959.01	100%	96%	4%	0%	100%	\$962.96	4.8
	RHS	Autodesk - Certified User Inventor	X	2	2	0	2	0	2	0.2	\$ 1,663.25	100%	100%	0%	0%	100%	\$77.04	0.4
	SHS	Autodesk - Certified User AutoCAD	X	25	25	0	24	1	25	0.2	\$ 19,959.01	100%	96%	4%	0%	100%	\$969.59	4.8
	SHS	Autodesk - Certified User Revit	X	5	5	0	4	1	5	0.2	\$ 3,326.50	100%	80%	20%	0%	100%	\$193.92	0.8
	SHS	Autodesk - Certified User Inventor	X	7	7	0	6	1	7	0.2	\$ 4,989.75	100%	86%	14%	0%	100%	\$271.49	1.2

**2016-17 Industry Certification  
HS Results by Program**

Program	School	Assessment	School Grade	# Students Identified	# Participants	# In Progress	# Passing	# Failing	# Completing Participants	Funding Weights	Potential Funding \$	% Participants	% Passing	% Failing	% In Progress	% Completing Participants	Cost of Assessments & Test Prep Used	Potential Bonus FTE Calculation
TV Production	BHS	AVID Media Composer	X	20	20	0	20	0	20	0.1	\$ 8,316.25	100%	100%	0%	0%	100%	\$1,675.00	2.0
	EHS	AVID Media Composer	X	25	25	0	25	0	25	0.1	\$ 10,395.32	100%	100%	0%	0%	100%	\$1,675.00	2.5
	SCHS	AVID Media Composer	X	0	0	0	0	0	0	0.1	\$ -						\$1,675.00	0.0
	THS	AVID Media Composer	X	1	1	0	1	0	1	0.1	\$ 415.81	100%	100%	0%	0%	100%	\$1,400.00	0.1
	VHS	AVID Media Composer	X	9	9	0	9	0	9	0.1	\$ 3,742.31	100%	100%	0%	0%	100%	\$1,675.00	0.9
Web App Dev & Prog	PBMS	Microsoft - MTA HTML5	X	1	1	0	1	0	1	0.2	\$ 831.63	100%	100%	0%	0%	100%	\$123.08	0.2
	PBMS	CIW - JavaScript Specialist	X	1	1	0	1	0	1	0.2	\$ 831.63	100%	100%	0%	0%	100%	\$123.08	0.2
	PBMS	CIW - Site Development Assoc	X	17	17	0	11	6	17	0.2	\$ 9,147.88	100%	65%	35%	0%	100%	\$2,092.31	2.2
	PBMS	CIW - Advanced HTML5 & CSS3 Spec	X	7	7	0	2	5	7	0.2	\$ 1,663.25	100%	29%	71%	0%	100%	\$861.54	0.4
Web Development	CHS	Adobe: Dreamweaver	X	14	14	0	2	12	14	0.2	\$ 1,663.25	100%	14%	86%	0%	100%	\$560.00	0.4
	CHS	Adobe: Flash	X	1	1	0	0	1	1	0.2	\$ -	100%	0%	100%	0%	100%	\$40.00	0.0
	MHS	Adobe: Dreamweaver	X	21	21	0	10	11	21	0.2	\$ 8,316.25	100%	48%	52%	0%	100%	\$1,058.94	2.0
	MHS	Adobe: Flash	X	17	17	0	10	7	17	0.2	\$ 8,316.25	100%	59%	41%	0%	100%	\$857.23	2.0
	MHS	Adobe: Premiere Pro	X	1	1	0	0	1	1	0.1	\$ -	100%	0%	100%	0%	100%	\$50.43	0.0
	MHS	Adobe: Illustrator	X	1	1	0	0	1	1	0.1	\$ -	100%	0%	100%	0%	100%	\$50.43	0.0
	MHS	Adobe: Photoshop	X	7	7	0	3	4	7	0.1	\$ 1,247.44	100%	43%	57%	0%	100%	\$352.98	0.3
	MIHS	Adobe: Dreamweaver	X	34	34	0	34	0	34	0.2	\$ 28,275.26	100%	100%	0%	0%	100%	\$2,458.20	6.8
	MIHS	Adobe: Flash	X	16	16	0	16	0	16	0.2	\$ 13,306.01	100%	100%	0%	0%	100%	\$1,156.80	3.2
	THS	Adobe: Dreamweaver	X	20	20	0	19	1	20	0.2	\$ 15,800.88	100%	95%	5%	0%	100%	\$1,116.67	3.8
	THS	Adobe: Flash	X	1	1	0	0	1	1	0.2	\$ -	100%	0%	100%	0%	100%	\$55.83	0.0
	THS	Adobe: InDesign	X	1	1	0	1	1	2	0.1	\$ 415.81	100%	50%	50%	0%	200%	\$55.83	0.1
	THS	Adobe: Photoshop	X	32	32	0	27	4	31	0.1	\$ 11,226.94	100%	87%	13%	0%	97%	\$1,786.67	2.7

**This page intentionally left blank.**

# Industry Certification

## Appendix



**This page intentionally left blank.**

**2016-17 Industry Certification  
HS Return on Investment (ROI)**

Vendor	Assessment	Subtest	Potential CAPE Funding	Cost of Assessments & Test Prep	ROI	ROI
Certiport	Adobe	Premiere Pro Certified Expert	\$ 415.81	\$ 35.26	\$ 418,220.77	\$ 1,143,274.18
		Dreamweaver	\$ 57,382.15	\$ 5,342.14		
		Flash	\$ 29,106.89	\$ 2,555.69		
		Illustrator	\$ 89,399.73	\$ 14,653.76		
		InDesign	\$ 105,200.61	\$ 14,930.35		
		Photoshop	\$ 204,995.66	\$ 42,823.25		
		Premiere Pro	\$ 15,800.88	\$ 3,740.52		
		Certified User AutoCAD	\$ 87,320.66	\$ 6,228.99		
		Certified User Inventor	\$ 108,942.92	\$ 7,449.21		
		Certified User Revit	\$ 67,361.66	\$ 3,117.24		
	Autodesk	Inventor Professional	\$ 831.63	\$ 136.46	\$ 247,448.23	
		Certified Professional - 3ds Max	\$ -	\$ 76.75		
		Intuit	Quick Books	\$ 5,821.38		
	MTA'	HTML5	\$ 4,158.13	\$ 1,166.94	\$ 3,092.49	
		Mobility & Devices	\$ 831.63	\$ 440.00		
		Software Dev Fund	\$ 415.81	\$ 706.14		
	Microsoft Office	MOS Bundle	\$ 528,913.74	\$ 65,548.72	\$ 473,650.66	
		MOS Master	\$ 11,642.76	\$ 1,357.11		
	AHA First Aid	\$ -	\$ 208.00	\$ -	\$ (208.00)	
	Air Conditioning Service Tech	\$ 831.63	\$ 127.00	\$ -	\$ 704.63	
	ALP	\$ 3,326.50	\$ 399.91	\$ -	\$ 2,926.59	
	AVID	Media Composer	\$ 22,869.70	\$ 8,100.00	\$ -	\$ 14,769.70
	C N A	\$ 44,491.96	\$ 18,135.00	\$ -	\$ 26,356.96	
	Chief Architect	\$ 14,137.63	\$ 2,525.00	\$ -	\$ 11,612.63	
	CIW	Advanced HTML5 & CSS3 Spec	\$ 1,663.25	\$ 861.54	\$ -	\$ 801.71
		JavaScript Specialist	\$ 831.63	\$ 123.08	\$ -	\$ 708.55
		Site Development Assoc	\$ 9,147.88	\$ 2,092.31	\$ -	\$ 7,055.57
	CMAA	\$ 76,925.35	\$ 26,283.91	\$ -	\$ 50,641.44	
	CPR/AED/BLS for Healthcare Providers	\$ -	\$ 3,370.00	\$ -	\$ (3,370.00)	
	CPR/First Aid	\$ -	\$ 360.00	\$ -	\$ (360.00)	
	EMR	\$ 17,464.13	\$ 7,200.00	\$ -	\$ 10,264.13	
	FAA	Ground School	\$ 24,948.76	\$ 1,750.00	\$ -	\$ 23,198.76
	FLADA	\$ 44,907.77	\$ 22,065.52	\$ -	\$ 22,842.25	
	GIS Technician	\$ 415.81	\$ 1,850.00	\$ -	\$ (1,434.19)	
	HVAC Excellence - A/C	\$ 9,979.50	\$ 1,523.95	\$ -	\$ 8,455.56	
	HVAC Excellence - Electrical	\$ 6,653.00	\$ 1,015.97	\$ -	\$ 5,637.04	
	Intro to Childcare Training Certificate	\$ -	\$ -	\$ -	\$ -	
	Maintenance & Light Repair, G-1	\$ 831.63	\$ 124.55	\$ -	\$ 707.08	
	National CDA	\$ 10,811.13	\$ 5,950.00	\$ -	\$ 4,861.13	
	NCCER	\$ 11,642.76	\$ 1,777.94	\$ -	\$ 9,864.82	
	NOCTI	Apparel & Text Prod & Mer	\$ -	\$ 2,017.00	\$ -	\$ (2,017.00)
		Criminal Justice	\$ -	\$ 1,106.09	\$ -	\$ (1,106.09)
	ParaPro	\$ -	\$ 825.00	\$ -	\$ (825.00)	
	ProStart Certificate of Achievement	\$ 14,137.63	\$ 699.16	\$ -	\$ 13,438.47	
	SafeStaff Food Handler Certification	\$ -	\$ 5,214.15	\$ -	\$ (5,214.15)	
	ServSafe Manager	\$ 211,232.85	\$ 21,229.25	\$ -	\$ 190,003.60	
	Solidworks	\$ 69,856.53	\$ 6,653.03	\$ -	\$ 63,203.50	
	Staff Credential	\$ -	\$ 560.00	\$ -	\$ (560.00)	
	Wastewater Treatment Plant Oper C	\$ 1,663.25	\$ 1,400.00	\$ -	\$ 263.25	
	Water Treat Plant Oper Lvl C	\$ 5,405.56	\$ 2,400.00	\$ -	\$ 3,005.56	
<b>Grand Total</b>			<b>\$ 1,922,717.88</b>	<b>\$ 323,215.20</b>		<b>\$ 1,599,502.68</b>