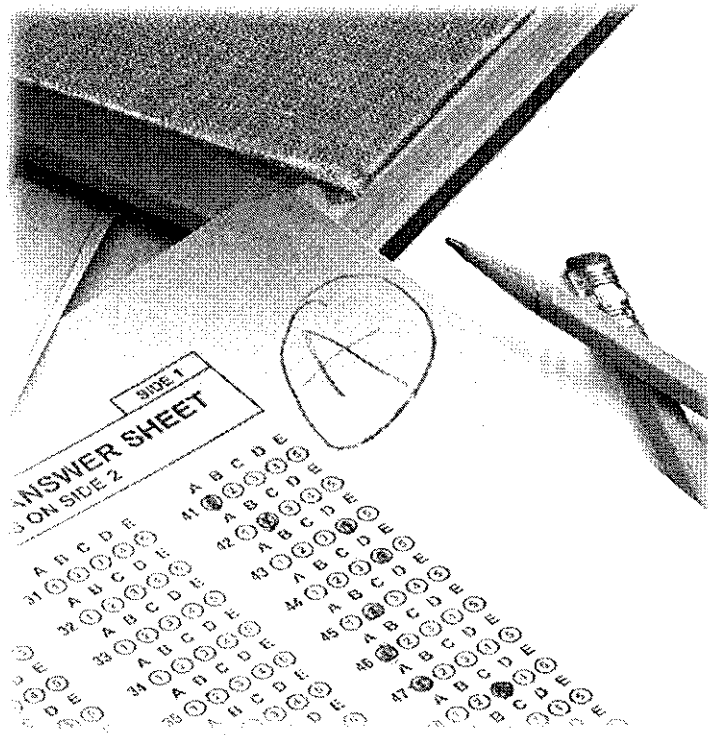


# Industry Certification Results 2012 - 2013



**Brevard Public Schools**  
**Dr. Brian T. Binggeli, Superintendent**

**SCHOOL BOARD OF BREVARD COUNTY**

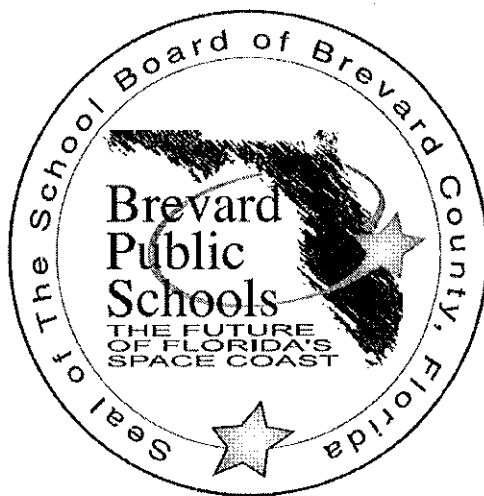
Educational Services Facility  
2700 Judge Fran Jamieson Way  
Viera, FL 32940-6601

**SCHOOL BOARD MEMEBERS**

Karen Henderson, Chairman  
Andy Ziegler, Vice Chairman  
Dr. Michael Krupp  
Dr. Barbara A. Murray  
Amy Kneessy

**SUPERINTENDENT**

Dr. Brian T. Binggeli



**DIVSIION OF CURRICULUM AND INSTURCTION  
ASSOCIATE SUPERINTENDENT**

Cyndi Van Meter

**OFFICE OF CAREER & TECHNICAL EDUCATION  
DIRECTOR**

Janice Scholz

# Table of Contents

<b>Introduction</b> .....	1
<b>Industry Certification District Results</b> .....	3
<b>Industry Certification Results by School</b>	
Astronaut High School.....	9
Bayside High School.....	10
Cocoa Beach Jr./Sr. High School .....	11
Cocoa High School .....	12
Eau Gallie High School.....	13
Edgewood Jr./Sr. High School.....	14
Heritage High School .....	15
Melbourne High School.....	16
Merritt Island High School.....	17
Palm Bay High School .....	18
Rockledge High School .....	19
Satellite High School.....	20
Space Coast Jr./Sr. High School .....	21
Titusville High School.....	22
Viera High School.....	23
Clearlake Middle School.....	24
Central Middle School .....	25
Jackson Middle School.....	26
Jefferson Middle School .....	27
McNair Middle School .....	28
Southwest Middle School.....	29
<b>Industry Certification Results By Assessment</b> .....	31
<b>Industry Certification Results By Program</b> .....	43
<b>Industry Certification Results; 3 Year Summary</b> .....	55
<b>Industry Certification Appendix</b> .....	59

**This page intentionally left blank.**

## Introduction

Secondary schools around the nation are involved at various stages in high school redesign initiatives. This reform is based on the belief that setting high standards and establishing measurable goals can improve individual outcomes in education. This will ensure that all students graduating from high school are prepared to enter the workforce and postsecondary education with the competencies to be successful. Today's educational environment is heavily focused on accountability, standards and high-stakes assessment. At the same time, industry is pursuing assurances that job seekers have the skills required to fill their openings.

At local, state, and federal levels, Career & Technical Education (CTE) programs are tasked with providing students credentials and certifications which are recognized and valued by business and industry partners. Having a strong connection to industry, career and technical education has long understood the importance of industry-recognized credentials and certifications.

### College and Career Readiness (CCR)

The State of Florida launched the College and Career Readiness Initiative to improve student readiness for postsecondary education and promote success after high school graduation. During the 2008 legislative session, s. 1008.30 (3), F.S., (also known as Senate Bill "1908") was revised to provide an opportunity for postsecondary readiness testing of high school students and remediation prior to graduation.

Important goals of this law are to: 1) increase the number and percentage of students who graduate from high school ready for college credit coursework; 2) better communicate with 11th grade students and their parents the requirements of college entry, and; 3) to provide students, whose test scores in Reading, Writing and/or Mathematics indicate deficiencies in critical skills, an opportunity to attain the needed competencies during the 12th grade year prior to high school graduation.

Brevard's aspirations for our students are ambitious. Brevard's *Increased Graduation Requirements* surpasses the requirements of both the A++ legislation as well as those of the national secondary school reform. To ensure every Brevard Public Schools graduate is college and career ready, students are required to complete a program of study which includes a minimum of 3 credits in one of the following areas:

- Approved dual enrollment, AP, IB, AICE or approved honor courses  
or
- Sequential CTE program of study resulting in a credential endorsed by a national, state or local industry: <http://www.fldoe.org/cc/osas/Evaluations/pdf/fyi2010-04.pdf>

Since SY 2009-10, a portion of the high school grade is determined by students' participation and performance in industry certifications, along with AP, IB, AICE and dual enrollment. Florida Statutes further expand the requirements for CTE industry certification by including student attainment of CTE industry certifications as one of the two Standard High School Diploma Designations.

### **Acceleration**

Florida Statutes HB 7059 and SB 1368 provided middle school students the opportunity to attain the instructional technology tools necessary to prepare them for high school, college and the workforce. Middle School students in the 2012-2013 school year were able to generate bonus funding for their schools by attaining industry certifications declared at the highest level of industry certification in a science, technology, engineering, and mathematics (STEM) on the Industry Certification Funding List upon promotion to the ninth grade. In Brevard, the assessments appropriate for the 2012-13 school year for middle school students included examinations associated with the Microsoft Office Specialist (MOS) Assessments, i.e. Word, Excel or PowerPoint. Computing for College and Careers (CCC) was designated as the pilot middle school course for testing industry certification.

[http://www.flsenate.gov/PublishedContent/Session/2012/BillSummary/Education\\_ED7059ed7059.pdf](http://www.flsenate.gov/PublishedContent/Session/2012/BillSummary/Education_ED7059ed7059.pdf)

The BPS strategic plan includes Outcome Indicator 1.4.7: *By 2016, 75% of all BPS students taking an industry certification test will achieve a passing score.* The CTE department has identified student industry credentials that meet the rigorous course requirements and this key outcome indicator.

### **Technical Skill Attainment**

The Carl D. Perkins Career and Technical Education Improvement Act was reauthorized in 2006 and requires student attainment of career and technical skill proficiencies. This includes student achievement on technical assessments that are aligned with industry-recognized standards. The Florida DOE approves the Technical Skill Attainment List using the following criteria: the assessment requires a minimum of 150 hours instruction, is occupationally specific, is a State or Federal regulated professional license, and the certifying agency is accredited. Local Perkins funding is tied to these performance measures, targets and potential sanctions regarding Technical Skill Attainment for program concentrators. The SY 2012-13 target for BPS, set by the Florida DOE, was 99.32%.

Career and Technical Education assessments are utilized by CTE students as they complete their technical program of study. Assessments, required at the federal, state and district levels, measure student understanding of both the knowledge and skills that are the foundation of the CTE program. Teachers and administrators can improve program curriculum by using assessment data to identify instructional needs and maintain the continuous improvement process. Assessment may be one of the most effective tools for increasing student achievement.

It is imperative that teachers and administrators maintain a positive perception of the value of technical skill attainment. Not only does it meet new local, state and federal requirements for CTE programs, assessments can provide a continuous improvement model for CTE instruction. Industry certifications can also provide business and industry the guarantee that CTE students have the skills required to fill their openings; a win-win situation for all.

# Industry Certification District Results



**This page intentionally left blank.**



## 2012 - 2013 District Industry Certification

School	# Students Identified	# Participants	# Passing	# Failing	# Completing Participants	% Participants	% Passing	% Failing	% Completing Participants	Cost of Assessments & Test Prep Used
AHS	236	236	147	39	186	100%	79%	21%	79%	\$21,433.04
BHS	458	412	323	89	412	90%	78%	22%	100%	\$23,570.23
CBHS	100	97	28	18	46	97%	61%	39%	47%	\$7,481.47
CHS	239	215	162	53	215	90%	75%	25%	100%	\$8,366.52
EGHS	149	139	91	48	139	93%	65%	35%	100%	\$9,635.34
EHS	16	15	2	13	15	94%	13%	87%	100%	\$3,635.00
HHS	251	228	95	83	178	91%	53%	47%	78%	\$24,567.08
MHS	485	467	328	75	403	96%	81%	19%	86%	\$23,041.57
MIHS	163	157	128	27	155	96%	83%	17%	99%	\$14,779.17
PBHS	330	317	268	36	304	96%	88%	12%	96%	\$20,066.57
RHS	232	217	172	45	217	94%	79%	21%	100%	\$10,835.65
SCHS	240	234	154	55	209	98%	74%	26%	89%	\$12,891.57
SHS	111	93	74	19	93	84%	80%	20%	100%	\$9,801.85
THS	297	291	226	65	291	98%	78%	22%	100%	\$14,437.85
VHS	323	309	163	115	278	96%	59%	41%	90%	\$18,926.86
CLMS	13	13	13	0	13	100.0%	100.0%	0.0%	100.0%	\$100.00
CMS	19	19	19	0	19	100.0%	100.0%	0.0%	100.0%	\$100.00
HMS										\$100.00
JAMS	33	33	33	0	33	100.0%	100.0%	0.0%	100.0%	\$100.00
JEMS	1	1	1	0	1	100.0%	100.0%	0.0%	100.0%	\$100.00
KMS										\$100.00
MAMS										\$100.00
MCMS	3	3	3	0	3	100.0%	100.0%	0.0%	100.0%	\$100.00
SMS										\$100.00
SWMS	17	17	17	0	17	100.0%	100.0%	0.0%	100.0%	\$100.00
<b>Total</b>	<b>3,716</b>	<b>3,513</b>	<b>2,447</b>	<b>780</b>	<b>3,227</b>	<b>94.5%</b>	<b>75.8%</b>	<b>24.2%</b>	<b>91.9%</b>	<b>\$224,469.77</b>

**This page intentionally left blank.**

# Industry Certification Results By School



**This page intentionally left blank.**

# 2012-13 Industry Certification Astronaut High School

School	Program	Assessment	School Grade	# Students Identified	# Participants	# In Progress	# Passing	# Failing	# Completing Participants	Funding Weights	% Participants	% Passing	% Failing	Cost of Assessments & Test Prep Used	Potential Bonus FTE Calculation
AHS	Patient Care Assisting	C N A **	X	33	33	0	33	0	33	0.2	100%	100%	0%	\$4,783.98	6.6
AHS	Engineering Technology	Solidworks	X	8	8	0	5	3	8	0.1	100%	63%	38%	\$2,038.10	0.5
AHS	First Responder	CMAA	X	17	17	0	7	10	17	0.1	100%	41%	59%	\$2,872.49	0.7
AHS	Web Development	Adobe: Dreamweaver	X	21	21	0	12	9	21	0.2	100%	57%	43%	\$878.34	2.4
AHS	Digital Design	Adobe: Photoshop	X	19	19	0	16	3	19	0.1	100%	84%	16%	\$878.33	1.6
AHS	Web Development	Adobe: Photoshop	X	3	3	0	0	3	3	0.1	100%	0%	100%	\$878.33	0
AHS	Drafting/ILL Design	Autodesk - Certified User AutoCAD*	X	2	2	0	1	1	2	0.2	100%	50%	50%	\$160.00	0.2
AHS	Finance Academy	MOS Bundle	X	51	51	36	5	10	15	0.2	100%	33%	67%	\$6,893.47	1
AHS	Construction Tech	NCCER Carpentry	X	82	82	14	68	0	68	0.2	100%	100%	0%	\$2,050.00	14
				<b>236</b>	<b>236</b>	<b>50</b>	<b>147</b>	<b>39</b>	<b>186</b>		<b>100%</b>	<b>79%</b>	<b>21%</b>	<b>\$21,433.04</b>	<b>20</b>
				<b>Astronaut High School Totals:</b>											

\*Students were able to attempt the exam as a BETA test. Those who passed, scores were able to be recorded as passing. Failing scores were able to be disregarded.

\*\* Offered through Dual Enrollment

# 2012-13 Industry Certification Bayside High School

School	Program	Assessment	School Grade	# Students Identified	# Participants	# In Progress	# Passing	# Failing	# Completing	Participants	Funding Weights	% Participants	% Passing	% Failing	Cost of Assessments & Test Prep Used	Potential Bonus FTE Calculation
BHS	Culinary Arts	ServSafe Manager**	X	4	4	0	3	1	4	4	0.1	100%	75%	25%	\$152.00	0.3
BHS	Patient Care Assisting	C N A **	X	14	14	0	14	0	14	14	0.2	100%	100%	0%	\$2,044.00	2.8
BHS	Culinary Arts	SafeStaff Food Handler Certificate		92	84	0	84	0	84	84	Perkins Only	91%	100%	0%	\$684.50	
BHS	Culinary Arts	ProStart Certificate of Achievement	X	4	4	0	4	0	4	4	0.2	100%	100%	0%	\$185.00	0.8
BHS	Culinary Arts	SafeStaff Food Handler Certificate		33	33	0	33	0	33	33	Perkins Only	100%	100%	0%	\$276.50	
BHS	Culinary Arts	ServSafe Manager	X	40	40	0	31	9	40	40	0.1	100%	78%	23%	\$1,748.00	3.1
BHS	Drafting/ILL Design	Autodesk - Certified User AutoCAD*	X	28	26	0	26	0	26	26	0.2	93%	100%	0%	\$2,080.00	5.2
BHS	Engineering Technology	Solidworks	X	35	33	0	19	14	33	33	0.1	94%	58%	42%	\$2,038.10	1.9
BHS	Digital Design	Adobe: Flash	X	2	2	0	1	1	2	2	0.2	100%	50%	50%	\$1,317.50	0.2
BHS	Digital Design	Adobe: Photoshop	X	48	45	0	31	14	45	45	0.1	94%	69%	31%	\$1,317.50	3.1
BHS	PC Support	Adobe: Photoshop	X	3	3	0	3	0	3	3	0.1	100%	100%	0%		0.3
BHS	PC Support	MTA Windows OS Fundamentals	X	3	1	0	1	0	1	1	0.2	33%	100%	0%	\$282.00	0.2
BHS	PC Support - MTA Implementation	Microsoft: MTA Windows OS Software													\$510.00	
BHS	PC Support - MTA Implementation	Microsoft: MTA Windows OS Text													\$260.00	
BHS	PC Support - MTA Implementation	Microsoft: MTA Windows OS Unlimited													\$146.66	
BHS	TV Production	AVID	X	42	41	0	5	36	41	41	0.1	98%	12%	88%	\$1,000.00	0.5
BHS	Comm Tech	Adobe: Flash	X	25	25	0	13	12	25	25	0.2	100%	52%	48%	\$1,317.50	2.6
BHS	Comm Tech	Adobe: Photoshop	X	46	46	0	44	2	46	46	0.1	100%	96%	4%	\$1,317.50	4.4
BHS	Admin Office Specialist	MOS Bundle	X	39	11	20	11	0	11	11	0.2	28%	100%	0%	\$6,893.47	2.2
				<b>458</b>	<b>412</b>	<b>20</b>	<b>323</b>	<b>89</b>	<b>412</b>			<b>90%</b>	<b>78%</b>	<b>22%</b>	<b>\$ 23,570.23</b>	<b>24.5</b>
*Students were able to attempt the exam as a BETA test. Those who passed, scores were able to be recorded as passing. Failing scores were able to be disregarded.																
** Offered through Dual Enrollment																

# 2012-13 Industry Certification Cocoa Beach High School

School	Program	Assessment	School Grade	# Students Identified	# Participants	# In Progress	# Passing	# Falling	# Completing Participants	Funding Weights	% Participants	% Passing	% Falling	Cost of Assessments & Test Prep Used	Potential Bonus FTE Calculation
CBHS	CCC	MOS Bundle	X	57	57	49	6	2	8	0.2	100%	75%	25%	\$3,446.74	1.2
CBHS	GIS Technology	GIS Technician	X	9	9	0	4	5	9	0.2	100%	44%	56%	\$0.00	0.8
CBHS	Int'l Business	MOS Bundle	X	10	10	2	6	2	8	0.2	100%	75%	25%	\$3,446.74	1.2
CBHS	Fashion Design	NOCTI - Apparel & Text Prod & Merchandise		14	14	0	12	2	14	Perkins Only	100%	86%	14%	\$448.00	
CBHS	Marketing	A*S*K* Marketing Fundamentals		10	7	0	0	7	7	Perkins Only	70%	0%	100%	\$140.00	
<b>Cocoa Beach Jr./Sr. High School School Totals:</b>														<b>\$ 7,481.47</b>	<b>3.2</b>

# 2012-13 Industry Certification Cocoa High School

School	Program	Assessment	School Grade	# Students Identified	# Participants	# In Progress	# Passing	# Failing	# Completing Participants	Funding Weights	% Participants	% Passing	% Failing	Cost of Assessments & Test Prep Used	Potential Bonus FTE Calculation								
CHS	Culinary Arts	ServSafe Manager**	X	18	16	0	14	2	16	0.1	89%	88%	13%	\$608.00	1.4								
CHS	Drafting/ILL Design	Autodesk Certified User - AutoCAD*	X	14	14	0	7	7	14	0.2	100%	50%	50%	\$1,200.00	1.4								
CHS	PC Support	MTA Windows OS Fundamentals	X	6	5	0	3	2	5	0.2	83%	60%	40%	\$376.00	0.6								
CHS	PC Support - MTA Implementation	Microsoft MTA Windows OS Software												\$534.00									
CHS	PC Support - MTA Implementation	Microsoft MTA Windows OS Text												\$1,040.00									
CHS	PC Support - MTA Implementation	Microsoft MTA Windows OS Unlimited Practice Tests												\$146.66									
CHS	Accounting Applications	NOCTI Accounting Basic		5	5	0	0	5	5	Perkins Only	100%	0%	100%	\$95.00									
CHS	Health & Wellness	CMAA	X	7	5	0	0	5	5	0.1	71%	0%	100%	\$844.85	0								
CHS	Culinary Arts	SafeStaff Food Handler Certification		80	64	0	64	0	64	Perkins Only	80%	100%	0%	\$512.00									
CHS	Web Development	Adobe: Dreamweaver	X	66	64	0	55	9	64	0.2	97%	86%	14%	\$878.34	11								
CHS	Web Development	Adobe: Flash	X	13	13	0	3	10	13	0.2	100%	23%	77%	\$878.34	0.6								
CHS	Web Development	Adobe: Photoshop	X	4	4	0	3	1	4	0.1	100%	75%	25%	\$878.33	0.3								
CHS	Automotive Collision	ASE Student Test		26	25	0	13	12	25	Perkins Only	96%	52%	48%	\$375.00									
<b>Cocoa High School Totals:</b>													<b>239</b>	<b>215</b>	<b>0</b>	<b>162</b>	<b>53</b>	<b>215</b>	<b>90%</b>	<b>75%</b>	<b>25%</b>	<b>\$8,366.52</b>	<b>13.9</b>

\*Students were able to attempt the exam as a BETA test. Those who passed, scores were able to be recorded as passing. Failing scores were able to be disregarded.

\*\* Offered through Dual Enrollment



# 2012-13 Industry Certification Eau Gallie High School

School	Program	Assessment	School Grade	# Students Identified	# Participants	# In Progress	# Passing	# Failing	# Completing	Participants	Funding Weights	% Participants	% Passing	% Failing	Cost of Assessments & Test Prep Used	Potential Bonus FTE Calculation							
EGHS	Drafting - CCC	Autodesk - Certified User AutoCAD***	X	8	8	0	8	0	8	8	0.2	100%	100%	0%	\$640.00	1.6							
EGHS	Web Development	Adobe: Dreamweaver	X	2	2	0	2	0	2	2	0.2	100%	100%	0%	\$658.75	0.4							
EGHS	Digital Design	Adobe: Dreamweaver	X	1	1	0	1	0	1	1	0.2	100%	100%	0%	\$658.75	0.2							
EGHS	Digital Design	Adobe: Photoshop	X	19	19	0	19	0	19	19	0.1	100%	100%	0%	\$658.75	1.9							
EGHS	Web Development	Adobe: Photoshop	X	1	1	0	1	0	1	1	0.1	100%	100%	0%	\$658.75	0.1							
EGHS	Health & Wellness	CMAA	X	7	7	0	5	2	7	7	0.1	100%	71%	29%	\$1,182.79	0.5							
EGHS	Engineering Technology	Solidworks	X	6	6	0	3	3	6	6	0.1	100%	0%	0%	\$2,038.10	0.3							
EGHS	Drafting/ILL Design	Autodesk - Certified User AutoCAD*	X	16	16	0	15	1	16	16	0.2	100%	94%	6%	\$880.00	3							
EGHS	Automotive Service Tech	FLADA	X	11	11	0	5	6	11	11	0.2	100%	45%	55%	\$879.45	1							
EGHS	Automotive Service Tech	ASE Student Assessment Brakes		26	26	0	11	15	26	26	Perkins Only	100%	42%	58%	\$390.00								
EGHS	Marine Service	Skills Connect Assessment Marine Svc		37	27	0	6	21	27	27	Perkins Only	73%	22%	78%	\$540.00								
EGHS	Early Childhood Ed	Staff Credential		15	15	0	15	0	15	15	Perkins Only	100%	100%	0%	\$450.00								
<b>Eau Gallie High School Totals:</b>												<b>149</b>	<b>139</b>	<b>0</b>	<b>91</b>	<b>48</b>	<b>139</b>		<b>93%</b>	<b>65%</b>	<b>35%</b>	<b>\$9,635.34</b>	<b>7.4</b>

\*Students were able to attempt the exam as a BETA test. Those who passed, scores were able to be recorded as passing. Failing scores were able to be disregarded.

\*\* Offered through Dual Enrollment

## 2012-13 Industry Certification Edgewood High School

School	Program	Assessment	School Grade	# Students Identified	# Participants	# In Progress	# Passing	# Failing	# Completing Participants	Funding Weights	% Participants	% Passing	% Failing	Cost of Assessments & Test Prep Used	Potential Bonus FTE Calculation
EHS	Digital Design	Adobe: InDesign Associate PILOT	X	7	6	0	2	4	6	PILOT	86%	33%	67%	\$2,635.00	0
EHS	TV Production	AVID	X	9	9	0	0	9	9	0.1	100%	0%	100%	\$1,000.00	0
				<b>16</b>	<b>15</b>	<b>0</b>	<b>2</b>	<b>13</b>	<b>15</b>		<b>94%</b>	<b>13%</b>	<b>87%</b>	<b>\$3,635.00</b>	<b>0</b>
				<b>Edgewood Jr./Sr. High School Totals:</b>											

# 2012-13 Industry Certification Heritage High School

School	Program	Assessment	School Grade	# Students Identified	# Participants	# In Progress	# Passing	# Failing	# Completing Participants	Funding Weights	% Participants	% Passing	% Failing	Cost of Assessments & Test Prep Used	Potential Bonus FTE Calculation
HHS	Health & Wellness	CMAA	X	37	37	0	9	28	37	0.1	100%	24%	76%	\$6,251.89	0.9
HHS	Automation & Production	Solidworks	X	15	0	0	0	0	0	0.1	0%	0%	0%	\$2,038.10	0
HHS	Medical Admin Specialist	CMAA	X	17	13	0	1	12	13	0.1	76%	8%	92%	\$2,196.61	0.1
HHS	Automotive Service Tech	FLADA	X	5	5	0	5	0	5	0.2	100%	100%	0%	\$399.75	1
HHS	Automotive Service Tech	FLADA	X	8	8	0	5	3	8	0.2	100%	63%	38%	\$639.60	1
HHS	Drafting/ILL Design	Autodesk - Certified User AutoCAD*	X	15	14	0	5	9	14	0.2	93%	36%	64%	\$1,120.00	1
HHS	Business S & Mgmt	MOS Bundle	X	84	84	50	34	0	34	0.2	100%	100%	0%	\$6,893.47	6.8
HHS	PC Support	MTA Windows OS Fundamentals	X	13	12	0	4	8	12	0.2	92%	33%	67%	\$1,034.00	0.8
HHS	Environmental Water	Water Treatment Plant Operator C	X	6	6	0	0	6	6	0.2	100%	0%	100%	\$600.00	0
HHS	Automotive Service Tech	ASE Student Assessment		22	20	0	15	5	20	Perkins Only	91%	75%	25%	\$300.00	
HHS	Automotive Service Tech	ASE Student Assessment		29	29	0	17	12	29	Perkins Only	100%	59%	41%	\$435.00	
HHS	PC Support - MTA Implementation	Microsoft MTA Windows OS Software												\$146.66	
HHS	PC Support - MTA Implementation	Microsoft MTA Windows OS Text												\$562.00	
HHS	PC Support - MTA Implementation	Microsoft MTA Windows OS Unlimited Practice Tests												\$1,950.00	
				<b>Heritage High School Totals:</b>	<b>251</b>	<b>228</b>	<b>50</b>	<b>83</b>	<b>178</b>		<b>91%</b>	<b>53%</b>	<b>47%</b>	<b>\$ 24,567.08</b>	<b>11.6</b>

\*Students were able to attempt the exam as a BETA test. Those who passed, scores were able to be recorded as passing. Failing scores were able to be disregarded.

# 2012-13 Industry Certification Melbourne High School

School	Program	Assessment	School Grade	# Students Identified	# Participants	# In Progress	# Passing	# Failing	# Completing	Funding Weights	% Participants	% Passing	% Failing	Cost of Assessments & Test Prep Used	Potential Bonus FTE Calculation
MHS	Culinary Arts	ServSafe Manager**	X	18	18	0	18	0	18	0.1	100%	100%	0%	\$684.00	1.8
MHS	TV Production	AVID	X	13	12	0	1	11	12	0.1	92%	8%	92%	\$1,000.00	0.1
MHS	Patient Care Assisting	CNA**	X	14	14	0	12	2	14	0.2	100%	86%	14%	\$2,058.00	2.4
MHS	Web Development	Adobe: Photoshop	X	4	4	0	4	0	4	0.1	100%	100%	0%	\$658.75	0.4
MHS	Web Development	Adobe: Premiere Pro	X	1	1	0	1	0	1	0.1	100%	100%	0%	\$658.75	0.1
MHS	Web Development	Adobe: Dreamweaver	X	23	23	0	22	1	23	0.2	100%	96%	4%	\$658.75	4.4
MHS	Web Development	Adobe: Flash	X	25	25	0	25	0	25	0.2	100%	100%	0%	\$658.75	5
MHS	Web Development	Adobe: Illustrator PILOT		1	1	0	1	0	1	Pilot	100%	100%	0%	\$0.00	
MHS	Fashion Design Services	NOCTI - Apparel & Text Prod & Merchandise		9	9	0	8	1	9	Perkins Only	100%	89%	11%	\$288.00	
MHS	New Media	Adobe: Photoshop	X	65	65	0	26	39	65	0.1	100%	40%	60%	\$1,317.50	2.6
MHS	New Media	Adobe: Flash	X	1	1	0	0	1	1	0.2	100%	0%	100%	\$1,317.50	0
MHS	Culinary Arts	ServSafe Manager	X	25	21	0	21	0	21	0.1	84%	100%	0%	\$798.00	2.1
MHS	Culinary Arts	SafeStaff Food Handler Certification		50	45	0	45	0	45	Perkins Only	90%	100%	0%	\$360.00	
MHS	Engineering Technology	Solidworks	X	37	35	0	30	5	35	0.1	95%	86%	14%	\$2,038.10	3
MHS	Finance Academy	MOS Bundle	X	81	81	56	13	12	25	0.2	100%	52%	48%	\$6,893.47	2.6
MHS	Culinary Arts	MOS Bundle		78	74	0	74	0	74	Perkins Only	95%	100%	0%	\$592.00	
MHS	Construction Tech	NCCER Carpentry	X	17	17	8	9	0	9	0.2	100%	100%	0%	\$425.00	1.8
MHS	New Media	Adobe: Flash	X	21	19	0	16	3	19	0.2	90%	84%	16%	\$2,635.00	3.2
MHS	CCC	MOS Bundle	X	2	2	0	2	0	2	0.2	100%	100%	0%	\$0.00	0.4
				<b>485</b>	<b>467</b>	<b>64</b>	<b>328</b>	<b>75</b>	<b>403</b>		<b>96%</b>	<b>81%</b>	<b>19%</b>	<b>\$23,041.57</b>	<b>25.6</b>

\*\* Offered through Dual Enrollment

# 2012-13 Industry Certification Merritt Island High School

School	Program	Assessment	School Grade	# Students Identified	# Participants	# In Progress	# Passing	# Failing	# Completing	Participants	Funding Weights	% Participants	% Passing	% Failing	Cost of Assessments & Test Prep Used	Potential Bonus FTE Calculation						
MIHS	Admin Office Specialist	MOS Bundle	X	14	14	6	8	4	12	0.2	100%	67%	33%	\$6,893.47	1.6							
MIHS	Automotive Service Tech	FLADA	X	6	6	0	5	1	6	0.2	100%	83%	17%	\$479.70	1							
MIHS	Automotive Service Tech	ASE Student Assessment		25	19	0	8	11	19	Perkins Only	76%	42%	58%	\$285.00								
MIHS	Digital Design	Adobe: Photoshop	X	18	18	0	18	0	18	0.1	100%	100%	0%	\$2,635.00	1.8							
MIHS	Drafting/ILL Design	Autodesk - Certified User AutoCAD*	X	7	7	0	7	0	7	0.2	100%	100%	0%	\$0.00	1.4							
MIHS	Early Childhood Ed	Staff Credential		16	16	0	16	0	16	Perkins Only	100%	100%	0%	\$480.00								
MIHS	Marketing Mgmt	A*S*K* Marketing Fundamentals		9	9	0	1	8	9	Perkins Only	100%	11%	89%	\$171.00								
MIHS	PLTW - ENGINEERING	Autodesk: Inventor*	X	17	17	0	16	1	17	0.2	100%	94%	6%	\$1,200.00	3.2							
MIHS	Web Development	Adobe: Photoshop	X	16	16	0	15	1	16	0.1	100%	94%	6%	\$878.33	1.5							
MIHS	Web Development	Adobe: Dreamweaver	X	27	27	0	27	0	27	0.2	100%	100%	0%	\$878.34	5.4							
MIHS	Web Development	Adobe: Flash	X	8	8	0	7	1	8	0.2	100%	88%	13%	\$878.33	1.4							
<b>Merritt Island High School Totals:</b>												<b>163</b>	<b>157</b>	<b>6</b>	<b>128</b>	<b>27</b>	<b>155</b>	<b>96%</b>	<b>83%</b>	<b>17%</b>	<b>\$14,779.17</b>	<b>17.3</b>

\*Students were able to attempt the exam as a BETA test. Those who passed, scores were able to be recorded as passing. Failing scores were able to be disregarded.



# 2012-13 Industry Certification Palm Bay High School

School	Program	Assessment	School Grade	# Students Identified	# Participants	# In Progress	# Passing	# Failing	# Completing Participants	Funding Weights	% Participants	% Passing	% Failing	Cost of Assessments & Test Prep Used	Potential Bonus FTE Calculation						
PBHS	Culinary Arts	ServSafe Manager**	X	17	17	0	16	1	17	0.1	100%	94%	6%	\$646.00	1.6						
PBHS	Patient Care Assisting	C N A **	X	13	13	0	10	3	13	0.2	100%	77%	23%	\$1,911.00	2						
PBHS	Early Childhood Ed	ECPC		3	3	0	3	0	3	Perkins Only	100%	100%	0%	\$90.00							
PBHS	Fashion Design Services	NOCTI - Apparel & Text Prod & Merchandise		14	14	0	13	1	14	Perkins Only	100%	93%	7%	\$448.00							
PBHS	Admin Office Specialist	MOS Bundle	X	20	20	8	12	0	12	0.2	100%	100%	0%	\$6,893.47	2.4						
PBHS	Culinary Arts	SafeStaff Food Handler Certification		28	28	0	28	0	28	Perkins Only	100%	100%	0%	\$224.00							
PBHS	Early Childhood Ed	Staff Credential		6	6	0	6	0	6	Perkins Only	100%	100%	0%	\$180.00							
PBHS	Drafting/ILL Design	Autodesk - Certified User AutoCAD*	X	10	10	0	10	0	10	0.2	100%	100%	0%	\$560.00	2						
PBHS	Engineering Technology	Solidworks	X	11	10	0	5	5	10	0.1	91%	50%	50%	\$2,038.10	0.5						
PBHS	Comm Tech	Adobe: Flash	X	4	3	0	3	0	3	0.2	75%	100%	0%	\$1,317.50	0.6						
PBHS	Comm Tech	Adobe: Photoshop	X	42	32	0	32	0	32	0.1	76%	100%	0%	\$1,317.50	3.2						
PBHS	Culinary Arts	SafeStaff Food Handler Certification		26	26	0	26	0	26	Perkins Only	100%	100%	0%	\$208.00							
PBHS	Culinary Arts	ServSafe Manager	X	21	20	0	15	5	20	0.1	95%	75%	25%	\$760.00	1.5						
PBHS	Web Development	Adobe: Dreamweaver	X	58	58	0	42	16	58	0.2	100%	72%	28%	\$878.34	8.4						
PBHS	Web Development	Adobe: Flash	X	10	10	0	7	3	10	0.2	100%	70%	30%	\$878.33	1.4						
PBHS	Web Development	Adobe: Photoshop	X	8	8	0	6	2	8	0.1	100%	75%	25%	\$878.33	0.6						
PBHS	Criminal Justice	NOCTI - Criminal Justice		26	26	0	26	0	26	Perkins Only	100%	100%	0%	\$513.00							
PBHS	Construction Tech	NCCER Carpentry	X	13	13	5	8	0	8	0.2	100%	100%	0%	\$325.00	1.6						
<b>Palm Bay High School Totals:</b>											<b>330</b>	<b>317</b>	<b>13</b>	<b>268</b>	<b>36</b>	<b>304</b>	<b>96%</b>	<b>88%</b>	<b>12%</b>	<b>\$20,066.57</b>	<b>22.2</b>

\*Students were able to attempt the exam as a BETA test. Those who passed, scores were able to be recorded as passing. Failing scores were able to be disregarded.

\*\* Offered through Dual Enrollment

# 2012-13 Industry Certification Rockledge High School

School	Program	Assessment	School Grade	# Students Identified	# Participants	# In Progress	# Passing	# Failing	# Completing Participants	Funding Weights	% Participants	% Passing	% Failing	Cost of Assessments & Test Prep Used	Potential Bonus FTE Calculation								
RHS	Patient Care Assisting	C.N.A. **	X	15	15	0	15	0	15	0.2	100%	100%	0%	\$ 2,205.00	3								
RHS	Hosp & Tourism	ServSafe Manager	X	19	18	0	18	0	18	0.1	95%	100%	0%	\$ 684.00	1.8								
RHS	Automotive Service Tech	FLADA	X	7	7	0	6	1	7	0.2	100%	86%	14%	\$ 559.65	1.2								
RHS	Automotive Service Tech	ASE Student Assessment		25	15	0	15	0	15	Perkins Only	60%	100%	0%	\$ 225.00									
RHS	Digital Design	Adobe: Photoshop	X	90	90	0	47	43	90	0.1	100%	52%	48%	\$ 2,635.00	4.7								
RHS	Fashion Design Services	NOCTI - Apparel & Text Prod & Merchandise		7	7	0	7	0	7	Perkins Only	100%	100%	0%	\$ 224.00									
RHS	Drafting/ILL Design	Autodesk - Certified User AutoCAD*	X	20	18	0	18	0	18	0.2	90%	100%	0%	\$ 1,440.00	3.6								
RHS	Drafting/ILL Design	Autodesk - Certified User Revit PILOT*		15	15	0	15	0	15	PILOT	100%	100%	0%	\$ -									
RHS	Digital Design	Adobe: Photoshop	X	21	21	0	20	1	21	0.1	100%	95%	5%	\$ 1,317.50	2								
RHS	Digital Design	Adobe: Flash	X	1	1	0	1	0	1	0.2	100%	100%	0%	\$ 1,317.50	0.2								
RHS	Criminal Justice	NOCTI - Criminal Justice		12	10	0	10	0	10	Perkins Only	83%	100%	0%	\$ 228.00									
<b>Rockledge High School Totals:</b>													<b>232</b>	<b>217</b>	<b>0</b>	<b>172</b>	<b>45</b>	<b>217</b>	<b>94%</b>	<b>79%</b>	<b>21%</b>	<b>\$ 10,835.65</b>	<b>13.5</b>

\*Students were able to attempt the exam as a BETA test. Those who passed, scores were able to be recorded as passing. Failing scores were able to be disregarded.

\*\* Offered through Dual Enrollment

## 2012-13 Industry Certification Satellite High School

School	Program	Assessment	School Grade	# Students Identified	# Participants	# In Progress	# Passing	# Failing	# Completing Participants	Funding Weights	% Participants	% Passing	% Failing	Cost of Assessments & Test Prep Used	Potential Bonus FTE Calculation									
SHS	Comm Tech	Adobe: Photoshop	X	21	20	0	18	2	20	0.1	95%	90%	10%	\$2,635.00	1.8									
SHS	Automotive Service Tech	FLADA	X	8	8	0	8	0	8	0.2	100%	100%	0%	\$639.60	1.6									
SHS	Drafting/ILL Design	Autodesk - Certified User AutoCAD*	X	18	16	0	16	0	16	0.2	89%	100%	0%	\$1,280.00	3.2									
SHS	Marketing	A*S*K* Marketing Fundamentals		1	1	0	1	0	1	Perkins Only	100%	100%	0%	\$20.00										
SHS	Fashion Design Services	NOCTI - Apparel & Text Prod & Mer		8	8	0	7	1	8	Perkins Only	100%	88%	13%	\$256.00										
SHS	Automotive Service Tech	ASE Student Assessment		38	23	0	7	16	23	Perkins Only	61%	30%	70%	\$345.00										
SHS	Early Childhood Ed	Staff Credential		17	17	0	17	0	17	Perkins Only	100%	100%	0%	\$510.00										
SHS	MicroSoft Office	Skills Assessment Manager for Microsoft Office												\$4,116.25										
<b>Satellite High School Totals:</b>													<b>111</b>	<b>93</b>	<b>0</b>	<b>74</b>	<b>19</b>	<b>93</b>		<b>84%</b>	<b>80%</b>	<b>20%</b>	<b>\$9,801.85</b>	<b>6.6</b>

\*Students were able to attempt the exam as a BETA test. Those who passed, scores were able to be recorded as passing. Failing scores were able to be disregarded.



## 2012-13 Industry Certification Space Coast High School

School	Program	Assessment	School Grade	# Students Identified	# Participants	# In Progress	# Passing	# Failing	# Completing	Participants	Funding Weights	% Participants	% Passing	% Failing	Cost of Assessments & Test Prep Used	Potential Bonus FTE Calculation
SCHS	Engineering Technology	Solidworks	X	16	13	0	6	7	13	0.1	81%	46%	54%	\$2,038.10	0.6	
SCHS	TV Production	AVID	X	34	31	0	1	30	31	0.1	91%	3%	97%	\$1,000.00	0.1	
SCHS	Drafting	Autodesk - Certified User AutoCAD*	X	19	19	0	19		19	0.2	100%	100%	0%		3.8	
SCHS	Drafting	Autodesk - Certified User Inventor*	X	12	12	0	12	0	12	0.2	100%	100%	0%		2.4	
SCHS	Admin Office Specialist	MOS Bundle	X	28	28	25	1	2	3	0.2	100%	33%	67%	\$6,893.47	0.2	
SCHS	A/C Refrig & Heat	HEAT	X	36	36	0	34	2	36	0.3	100%	94%	6%	\$720.00	10.2	
SCHS	Teacher Assisting	ParaPro		14	14	0	13	1	14	Perkins Only	100%	93%	7%	\$630.00		
SCHS	Marketing	A*S*K* Marketing Fundamentals		18	18	0	5	13	18	Perkins Only	100%	28%	72%	\$360.00		
SCHS	Drafting	Autodesk - Certified User Revit BETA*		13	13	0	13	0	13	Pilot	100%	100%	0%			
SCHS	A/C Refrig & Heat	EPA		50	50	0	50	0	50		100%	100%	0%	\$1,250.00		
<b>Space Coast High School Totals:</b>				<b>240</b>	<b>234</b>	<b>25</b>	<b>154</b>	<b>55</b>	<b>209</b>		<b>98%</b>	<b>74%</b>	<b>26%</b>	<b>\$ 12,891.57</b>	<b>17.3</b>	

\*Students were able to attempt the exam as a BETA test. Those who passed, scores were able to be recorded as passing. Failing scores were able to be disregarded.

## 2012-13 Industry Certification Titusville High School

School	Program	Assessment	School Grade	# Students Identified	# Participants	# In Progress	# Passing	# Failing	# Completing	Participants	Funding Weights	% Participants	% Passing	% Failing	Cost of Assessments & Test Prep Used	Potential Bonus FTE Calculation
THS	Culinary Arts	ServSafe Manager**	X	11	11	0	6	5	11	11	0.1	100%	55%	45%	\$418.00	0.6
THS	Patient Care Assisting	C N A**	X	37	37	0	36	1	37	37	0.2	100%	97%	3%	\$5,439.00	7.2
THS	Automotive Service Tech	FLADA	X	3	3	0	3	0	3	3	0.2	100%	100%	0%	\$239.85	0.6
THS	Automotive Service Tech	ASE Student Assessment		7	7	0	2	5	7	7	Perkins Only	100%	29%	71%	\$105.00	
THS	Culinary Arts	ServSafe Manager	X	30	30	0	18	12	30	30	0.1	100%	60%	40%	\$1,140.00	1.8
THS	Culinary Arts	SafeStaff Food Handler Certification		51	51	0	51	0	51	51	Perkins Only	100%	100%	0%	\$408.00	
THS	Digital Design	Adobe: Photoshop	X	56	50	0	45	5	50	50	0.1	89%	90%	10%	\$2,635.00	4.5
THS	Fashion Design Services	NOCTI - Apparel & Text Prod & Mer		13	13	0	12	1	13	13	Perkins Only	100%	92%	8%	\$418.00	
THS	TV Production	AVID	X	34	34	0	0	34	34	34	0.1	100%	0%	100%	\$1,000.00	0
THS	Web Development	Adobe: Dreamweaver	X	16	16	0	15	1	16	16	0.2	100%	94%	6%	\$1,317.50	3
THS	Web Development	Adobe: Photoshop	X	39	39	0	38	1	39	39	0.1	100%	97%	3%	\$1,317.50	3.8
				<b>Titusville High School Totals:</b>	<b>297</b>	<b>291</b>	<b>0</b>	<b>226</b>	<b>65</b>	<b>291</b>		<b>98%</b>	<b>78%</b>	<b>22%</b>	<b>\$14,437.85</b>	<b>13.7</b>

\*\* Offered through Dual Enrollment

# 2012-13 Industry Certification Viera High School

School	Program	Assessment	School Grade	# Students Identified	# Participants	# In Progress	# Passing	# Failing	# Completing Participants	Funding Weights	% Participants	% Passing	% Failing	Cost of Assessments & Test Prep Used	Potential Bonus FTE Calculation
VHS	Comm Tech	Adobe: Photoshop	X	22	22	0	18	4	22	0.1	100%	82%	18%	\$2,635.00	1.8
VHS	Comm Tech	Adobe: Photoshop	X	47	40	0	28	12	40	0.1	85%	70%	30%	\$878.33	2.8
VHS	Comm Tech	Adobe: Premiere Pro	X	1	1	0	1	0	1	0.1	100%	100%	0%	\$878.33	0.1
VHS	Comm Tech	Adobe: Flash	X	4	4	0	3	1	4	0.2	100%	75%	25%	\$878.33	0.6
VHS	Early Childhood Ed	Staff Credential		26	26	0	26	0	26	Perkins Only	100%	100%	0%	\$780.00	
VHS	Finance Academy	MOS Bundle	X	113	113	31	61	21	82	0.2	100%	74%	26%	\$6,893.47	12.2
VHS	Health Science - Dental	CMAA	X	21	20	0	10	10	20	0.1	95%	50%	50%	\$3,379.40	1
VHS	Interior Design	Chief Architect Apprentice	X	31	30	0	14	16	30	0.2	97%	47%	53%	\$1,395.00	2.8
VHS	Marketing Management	A*S*K* Marketing Fundamentals		14	11	0	1	10	11	Perkins Only	79%	9%	91%	\$209.00	
VHS	TV Production	AVID	X	44	42	0	1	41	42	0.1	95%	2%	98%	\$1,000.00	0.1
<b>Viera High School Totals:</b>				<b>323</b>	<b>309</b>	<b>31</b>	<b>163</b>	<b>115</b>	<b>278</b>		<b>96%</b>	<b>59%</b>	<b>41%</b>	<b>\$18,926.86</b>	<b>21.4</b>

2012-13 Industry Certification  
Clearlake Middle School

School Program	Assessment	# Students Identified	# Participants	# In Progress	# Passing	# Failing	# Completing	Participants	Funding Weight	% Participants	% Passing	% Failing	% In Progress	% Completing	Participants	Cost of Assessments & Test Prep Used	Bonus FTE Calculation
CLMS	CCC	Microsoft Word	13	0	13	0	13	0	0.1	100%	100%	0%	0%	100%	100%	\$ 100.00	1.3
CLMS	CCC	Microsoft PowerPoint	0	0	0	0	0	0	0.1	0%	0%	0%	0%	0%	0%		0
CLMS	CCC	Microsoft Excel	0	0	0	0	0	0	0.1	0%	0%	0%	0%	0%	0%		0
<b>Clearlake Middle School Totals:</b>			<b>13</b>	<b>0</b>	<b>13</b>	<b>0</b>	<b>13</b>	<b>0</b>		<b>100%</b>	<b>100%</b>	<b>0%</b>	<b>0%</b>	<b>100%</b>	<b>100%</b>	<b>\$ 100.00</b>	<b>1.3</b>

2012-13 Industry Certification  
Central Middle School

School Program	Assessment	# Students Identified	# Participants	# In Progress	# Passing	# Failing	# Completing	Participants	Funding Weight	% Participants	% Passing	% Failing	% In Progress	% Completing	Participants	Cost of Assessments & Test Prep Used	Bonus FTE Calculation
CMS	CCC	Microsoft Word	19	19	0	0	19	0	0.1	100%	100%	0%	0%	100%	19	\$ 100.00	1.9
CMS	CCC	Microsoft PowerPoint	0	0	0	0	0	0	0.1	0%	0%	0%	0%	0%	0		0
CMS	CCC	Microsoft Excel	0	0	0	0	0	0	0.1	0%	0%	0%	0%	0%	0		0
<b>Central Middle School Totals:</b>			<b>19</b>	<b>19</b>	<b>0</b>	<b>19</b>	<b>0</b>	<b>19</b>		<b>100%</b>	<b>100%</b>	<b>0%</b>	<b>0%</b>	<b>100%</b>	<b>19</b>	<b>\$ 100.00</b>	<b>1.9</b>

2012-13 Industry Certification  
Jackson Middle School

School	Program	Assessment	# Students Identified	# Participants	# In Progress	# Passing	# Failing	# Completing	Funding Weight	% Participants	% Passing	% Failing	% In Progress	% Completing	Participants	Cost of Assessments & Test Prep Used	Bonus FTE Calculation
JAMS	CCC	Microsoft Word	3	3	0	3	0	3	0.1	100%	100%	0%	0%	100%	3	\$ 100.00	0.3
JAMS	CCC	Microsoft PowerPoint	8	8	0	8	0	8	0.1	100%	100%	0%	0%	100%	8	\$ 100.00	0.8
JAMS	CCC	Microsoft Excel	22	22	0	22	0	22	0.1	100%	100%	0%	0%	100%	22	\$ 100.00	2.2
<b>Jackson Middle School Totals:</b>			<b>33</b>	<b>33</b>	<b>0</b>	<b>33</b>	<b>0</b>	<b>33</b>		<b>100%</b>	<b>100%</b>	<b>0%</b>	<b>0%</b>	<b>100%</b>	<b>33</b>	<b>\$ 300.00</b>	<b>3.3</b>

2012-13 Industry Certification  
Jefferson Middle School

School Program	Assessment	# Students Identified	# Participants	# In Progress	# Passing	# Failing	# Completing	Participants	Funding Weight	% Participants	% Passing	% Failing	% In Progress	% Completing	Participants	Cost of Assessments & Test Prep Used	Bonus FTE Calculation
JEMS	CCC	Microsoft Word	1	0	1	0	1	0	0.1	100%	100%	0%	0%	100%	100%	\$ 100.00	0.1
JEMS	CCC	Microsoft PowerPoint	0	0	0	0	0	0	0.1	0%	0%	0%	0%	0%	0%		0
JEMS	CCC	Microsoft Excel	0	0	0	0	0	0	0.1	0%	0%	0%	0%	0%	0%		0
<b>Jefferson Middle School Totals:</b>			<b>1</b>	<b>0</b>	<b>1</b>	<b>0</b>	<b>1</b>	<b>0</b>		<b>100%</b>	<b>100%</b>	<b>0%</b>	<b>0%</b>	<b>100%</b>	<b>100%</b>	<b>\$ 100.00</b>	<b>0.1</b>

2012-13 Industry Certification  
McNair Middle School

School Program	Assessment	# Students Identified	# Participants	# In Progress	# Passing	# Failing	# Completing	Participants	Funding Weight	% Participants	% Passing	% Failing	% In Progress	% Completing	Participants	Cost of Assessments & Test Prep Used	Bonus FTE Calculation
MCMS	CCC	Microsoft Word	3	0	3	0	3	0	0.1	100%	100%	0%	0%	100%	100%	\$ 100.00	0.3
MCMS	CCC	Microsoft PowerPoint	0	0	0	0	0	0	0.1	0%	0%	0%	0%	0%	0%		0
MCMS	CCC	Microsoft Excel	0	0	0	0	0	0	0.1	0%	0%	0%	0%	0%	0%		0
<b>McNair Middle School Totals:</b>		<b>3</b>	<b>3</b>	<b>0</b>	<b>3</b>	<b>0</b>	<b>3</b>	<b>0</b>		<b>100%</b>	<b>100%</b>	<b>0%</b>	<b>0%</b>	<b>100%</b>	<b>100%</b>	<b>\$ 100.00</b>	<b>0.3</b>

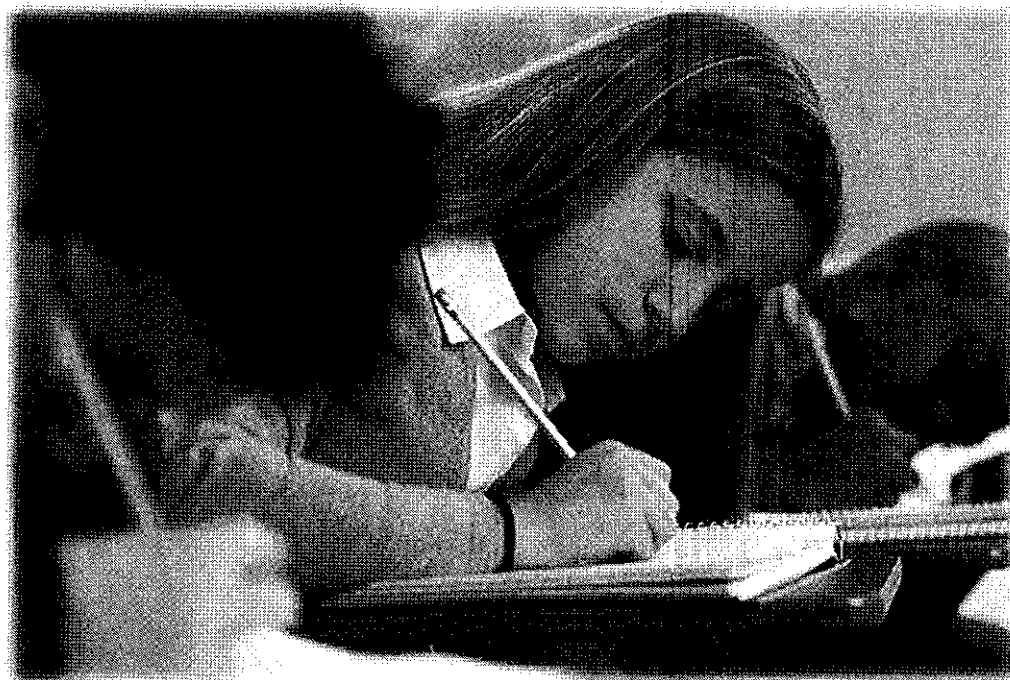


2012-13 Industry Certification  
Southwest Middle School

School Program	Assessment	# Students Identified	# Participants	# In Progress	# Passing	# Failing	# Completing	Funding Weight	% Participants	% Passing	% Failing	% In Progress	% Completing	Participants	Cost of Assessments & Test Prep Used	Bonus FTE Calculation
SWMS	CCC	Microsoft Word	17	0	17	0	17	0	100%	100%	0%	0%	100%	17	\$ 100.00	1.7
SWMS	CCC	Microsoft PowerPoint	0	0	0	0	0	0.1	0%	0%	0%	0%	0%	0		0
SWMS	CCC	Microsoft Excel	0	0	0	0	0	0.1	0%	0%	0%	0%	0%	0		0
<b>Southwest Middle School Totals:</b>		<b>17</b>	<b>17</b>	<b>0</b>	<b>17</b>	<b>0</b>	<b>17</b>		<b>100%</b>	<b>100%</b>	<b>0%</b>	<b>0%</b>	<b>100%</b>	<b>17</b>	<b>\$ 100.00</b>	<b>1.7</b>

**This page intentionally left blank.**

# Industry Certification Results By Assessment



**This page intentionally left blank.**

# 2012-13 Industry Certification By Assessment

School	Program	Assessment	School Grade	# Passing	# Failing	# of Completing Participants	Funding Weight	% Passing	% Failing	Cost of Assessments & Test Prep Used
CBHS	Marketing Management	A*S*K* Marketing Fundamentals		0	7	7	Perkins Only	0%	100%	\$140.00
MIHS	Marketing Management	A*S*K* Marketing Fundamentals		1	8	9	Perkins Only	11%	89%	\$171.00
SCHS	Marketing Management	A*S*K* Marketing Fundamentals		5	13	18	Perkins Only	28%	72%	\$360.00
SHS	Marketing Management	A*S*K* Marketing Fundamentals		1	0	1	Perkins Only	100%	0%	\$20.00
VHS	Marketing Management	A*S*K* Marketing Fundamentals		1	10	11	Perkins Only	9%	91%	\$209.00
<b>A*S*K* Marketing Fundamentals Totals:</b>				<b>8</b>	<b>38</b>	<b>46</b>		<b>17%</b>	<b>83%</b>	<b>\$900.00</b>

AHS	Web Development	Adobe: Dreamweaver	X	12	9	21	0.2	57%	43%	\$878.34
CHS	Web Development	Adobe: Dreamweaver	X	55	9	64	0.2	86%	14%	\$878.34
EGHS	Web Development	Adobe: Dreamweaver	X	2	0	2	0.2	100%	0%	\$658.75
EGHS	Digital Design	Adobe: Dreamweaver	X	1	0	1	0.2	100%	0%	\$658.75
MHS	Web Development	Adobe: Dreamweaver	X	22	1	23	0.2	96%	4%	\$658.75
MIHS	Web Development	Adobe: Dreamweaver	X	27	0	27	0.2	100%	0%	\$878.34
PBHS	Web Development	Adobe: Dreamweaver	X	42	16	58	0.2	72%	28%	\$878.34
THS	Web Development	Adobe: Dreamweaver	X	15	1	16	0.2	94%	6%	\$1,317.50
<b>Adobe: Dreamweaver Totals:</b>				<b>176</b>	<b>36</b>	<b>212</b>		<b>83%</b>	<b>17%</b>	<b>\$6,807.11</b>

BHS	Digital Design	Adobe: Flash	X	1	1	2	0.2	50%	50%	\$1,317.50
BHS	Comm Tech	Adobe: Flash	X	13	12	25	0.2	52%	48%	\$1,317.50
CHS	Web Development	Adobe: Flash	X	3	10	13	0.2	23%	77%	\$878.34
MHS	Web Development	Adobe: Flash	X	25	0	25	0.2	100%	0%	\$658.75
MHS	New Media	Adobe: Flash	X	0	1	1	0.2	0%	100%	\$1,317.50
MHS	New Media	Adobe: Flash	X	16	3	19	0.2	84%	16%	\$2,635.00
MIHS	Web Development	Adobe: Flash	X	7	1	8	0.2	88%	13%	\$878.33
PBHS	Comm Tech	Adobe: Flash	X	3	0	3	0.2	100%	0%	\$1,317.50
PBHS	Web Development	Adobe: Flash	X	7	3	10	0.2	70%	30%	\$878.33
RHS	Digital Design	Adobe: Flash	X	1	0	1	0.2	100%	0%	\$1,317.50
VHS	Comm Tech	Adobe: Flash	X	3	1	4	0.2	75%	25%	\$878.33
<b>Adobe: Flash Totals:</b>				<b>79</b>	<b>32</b>	<b>111</b>		<b>71%</b>	<b>29%</b>	<b>\$13,394.58</b>

\*BETA test - Passing scores were able to be recorded as passing. Failing scores were able to be disregarded.

\*\* Offered through Dual Enrollment

\*\*\* Passed industry certification but was not in a CTE course for score to be recorded.



# 2012-13 Industry Certification By Assessment

School	Program	Assessment	School Grade	# Passing	# Failing	# of Completing Participants	Funding Weight	% Passing	% Failing	Cost of Assessments & Test Prep Used
MHS	Web Development	Adobe: Illustrator PILOT		1	0	1	PILOT	100%	0%	\$0.00
		<b>Adobe: Illustrator PILOT Totals:</b>		<b>1</b>	<b>0</b>	<b>1</b>		<b>100%</b>	<b>0%</b>	<b>\$0.00</b>
EHS	Digital Design	Adobe: InDesign Associate PILOT	X	2	4	6	PILOT	33%	67%	\$2,635.00
		<b>Adobe: InDesign Associate PILOT Tests:</b>		<b>2</b>	<b>4</b>	<b>6</b>		<b>33%</b>	<b>67%</b>	<b>\$2,635.00</b>
AHS	Digital Design	Adobe: Photoshop	X	16	3	19	0.1	84%	16%	\$878.33
AHS	Web Development	Adobe: Photoshop	X	0	3	3	0.1	0%	100%	\$878.33
BHS	Digital Design	Adobe: Photoshop	X	31	14	45	0.1	69%	31%	\$1,317.50
BHS	PC Support	Adobe: Photoshop	X	3	0	3	0.1	100%	0%	
BHS	Comm Tech	Adobe: Photoshop	X	44	2	46	0.1	96%	4%	\$1,317.50
CHS	Web Development	Adobe: Photoshop	X	3	1	4	0.1	75%	25%	\$878.33
EGHS	Digital Design	Adobe: Photoshop	X	19	0	19	0.1	100%	0%	\$658.75
EGHS	Web Development	Adobe: Photoshop	X	1	0	1	0.1	100%	0%	\$658.75
MHS	Web Development	Adobe: Photoshop	X	4	0	4	0.1	100%	0%	\$658.75
MHS	New Media	Adobe: Photoshop	X	26	39	65	0.1	40%	60%	\$1,317.50
MIHS	Digital Design	Adobe: Photoshop	X	18	0	18	0.1	100%	0%	\$2,635.00
MIHS	Web Development	Adobe: Photoshop	X	15	1	16	0.1	94%	6%	\$878.33
PBHS	Comm Tech	Adobe: Photoshop	X	32	0	32	0.1	100%	0%	\$1,317.50
PBHS	Web Development	Adobe: Photoshop	X	6	2	8	0.1	75%	25%	\$878.33
RHS	Digital Design	Adobe: Photoshop	X	47	43	90	0.1	52%	48%	\$2,635.00
RHS	Digital Design	Adobe: Photoshop	X	20	1	21	0.1	95%	5%	\$1,317.50
SHS	Comm Tech	Adobe: Photoshop	X	18	2	20	0.1	90%	10%	\$2,635.00
THS	Digital Design	Adobe: Photoshop	X	45	5	50	0.1	90%	10%	\$2,635.00
THS	Web Development	Adobe: Photoshop	X	38	1	39	0.1	97%	3%	\$1,317.50
VHS	Comm Tech	Adobe: Photoshop	X	18	4	22	0.1	82%	18%	\$2,635.00
VHS	Comm Tech	Adobe: Photoshop	X	28	12	40	0.1	70%	30%	\$878.33
		<b>Adobe: Photoshop Totals:</b>		<b>432</b>	<b>133</b>	<b>565</b>		<b>76%</b>	<b>24%</b>	<b>\$28,326.23</b>

\*BETA test - Passing scores were able to be recorded as passing. Failing scores were able to be disregarded.

\*\* Offered through Dual Enrollment

\*\*\* Passed industry certification but was not in a CTE course for score to be recorded.

# 2012-13 Industry Certification By Assessment

School	Program	Assessment	School Grade	# Passing	# Failing	# of Completing Participants	Funding Weight	% Passing	% Failing	Cost of Assessments & Test Prep Used
MHS	Web Development	Adobe: Premiere Pro	X	1	0	1	0.1	100%	0%	\$658.75
VHS	Comm Tech	Adobe: Premiere Pro	X	1	0	1	0.1	100%	0%	\$878.33
		<b>Adobe: Premiere Pro Totals:</b>		<b>2</b>	<b>0</b>	<b>2</b>		<b>100%</b>	<b>0%</b>	<b>\$1,537.08</b>

<b>Adobe Totals:</b>	<b>692</b>	<b>205</b>	<b>897</b>	<b>77%</b>	<b>23%</b>	<b>\$53,600.00</b>
----------------------	------------	------------	------------	------------	------------	--------------------

HHS	Automotive Service Tech	ASE Student Assessment		15	5	20	Perkins Only	75%	25%	\$300.00
HHS	Automotive Service Tech	ASE Student Assessment		17	12	29	Perkins Only	59%	41%	\$435.00
MIHS	Automotive Service Tech	ASE Student Assessment		8	11	19	Perkins Only	42%	58%	\$285.00
RHS	Automotive Service Tech	ASE Student Assessment		15	0	15	Perkins Only	100%	0%	\$225.00
SHS	Automotive Service Tech	ASE Student Assessment		7	16	23	Perkins Only	30%	70%	\$345.00
THS	Automotive Service Tech	ASE Student Assessment		2	5	7	Perkins Only	29%	71%	\$105.00
EGHS	Automotive Service Tech	ASE Student Assessment		11	15	26	Perkins Only	42%	58%	\$390.00
		<b>ASE Automotive Student Assessment Totals:</b>		<b>75</b>	<b>64</b>	<b>139</b>		<b>54%</b>	<b>46%</b>	<b>\$2,085.00</b>

CHS	Automotive Collision	ASE Student Test		13	12	25	Perkins Only	52%	48%	\$375.00
		<b>ASE Collision Student Test Totals:</b>		<b>13</b>	<b>12</b>	<b>25</b>		<b>52%</b>	<b>48%</b>	<b>\$375.00</b>

<b>ASE Student Totals:</b>	<b>88</b>	<b>76</b>	<b>164</b>			<b>\$2,460.00</b>
----------------------------	-----------	-----------	------------	--	--	-------------------

\*BETA test - Passing scores were able to be recorded as passing. Failing scores were able to be disregarded.

\*\* Offered through Dual Enrollment

\*\*\*Passed industry certification but was not in a CTE course for score to be recorded.

# 2012-13 Industry Certification By Assessment

School	Program	Assessment	School Grade	# Passing	# Failing	# of Completing Participants	Funding Weight	% Passing	% Failing	Cost of Assessments & Test Prep Used
AHS	Drafting/ILL Design	Autodesk - Certified User AutoCAD*	X	1	1	2	0.2	50%	50%	\$160.00
BHS	Drafting/ILL Design	Autodesk - Certified User AutoCAD*	X	26	0	26	0.2	100%	0%	\$2,080.00
CHS	Drafting/ILL Design	Autodesk - Certified User AutoCAD*	X	7	7	14	0.2	50%	50%	\$1,200.00
EGHS	Drafting - CCC	Autodesk - Certified User AutoCAD**	X	8	0	8	0.2	100%	0%	\$640.00
EGHS	Drafting/ILL Design	Autodesk - Certified User AutoCAD*	X	15	1	16	0.2	94%	6%	\$880.00
HHS	Drafting/ILL Design	Autodesk - Certified User AutoCAD*	X	5	9	14	0.2	36%	64%	\$1,120.00
MIHS	Drafting/ILL Design	Autodesk - Certified User AutoCAD*	X	7	0	7	0.2	100%	0%	\$0.00
PBHS	Drafting/ILL Design	Autodesk - Certified User AutoCAD*	X	10	0	10	0.2	100%	0%	\$560.00
RHS	Drafting/ILL Design	Autodesk - Certified User AutoCAD*	X	18	0	18	0.2	100%	0%	\$1,440.00
SCHS	Drafting	Autodesk - Certified User AutoCAD*	X	19	0	19	0.2	100%	0%	\$0.00
SHS	Drafting/ILL Design	Autodesk - Certified User AutoCAD*	X	16	0	16	0.2	100%	0%	\$1,280.00
<b>Autodesk - Certified User AutoCAD* Totals:</b>				<b>132</b>	<b>18</b>	<b>150</b>		<b>88%</b>	<b>12%</b>	<b>\$9,360.00</b>

MIHS	PLTW - ENGINEERING	Autodesk - Certified User Inventor*	X	16	1	17	0.2	94%	6%	\$1,200.00
SCHS	Drafting	Autodesk - Certified User Inventor*	X	12	0	12	0.2	100%	0%	\$0.00
<b>Autodesk - Certified User Inventor* Totals:</b>				<b>28</b>	<b>1</b>	<b>29</b>		<b>97%</b>	<b>3%</b>	<b>\$1,200.00</b>

SCHS	Drafting	Autodesk - Certified User Revit BETA*		13	0	13	PILOT	100%	0%	\$0.00
RHS	Drafting/ILL Design	Autodesk - Certified User Revit BETA*		15	0	15	PILOT	100%	0%	\$0.00
<b>Autodesk - Certified User Revit BETA* Totals:</b>				<b>28</b>	<b>0</b>	<b>28</b>		<b>100%</b>	<b>0%</b>	<b>\$0.00</b>

<b>Autodesk Totals:</b>				<b>188</b>	<b>19</b>	<b>207</b>		<b>91%</b>	<b>9%</b>	<b>\$10,560.00</b>
-------------------------	--	--	--	------------	-----------	------------	--	------------	-----------	--------------------

BHS	TV Production	AVID	X	5	36	41	0.1	12%	88%	\$1,000.00
EHS	TV Production	AVID	X	0	9	9	0.1	0%	100%	\$1,000.00
MHS	TV Production	AVID	X	1	11	12	0.1	8%	92%	\$1,000.00
SCHS	TV Production	AVID	X	1	30	31	0.1	3%	97%	\$1,000.00
THS	TV Production	AVID	X	0	34	34	0.1	0%	100%	\$1,000.00
VHS	TV Production	AVID	X	1	41	42	0.1	2%	98%	\$1,000.00
<b>AVID Totals:</b>				<b>8</b>	<b>161</b>	<b>169</b>		<b>5%</b>	<b>95%</b>	<b>\$6,000.00</b>

\*BETA test - Passing scores were able to be recorded as passing. Failing scores were able to be disregarded.  
 \*\* Offered through Dual Enrollment  
 \*\*\*Passed industry certification but was not in a CTE course for score to be recorded.



# 2012-13 Industry Certification By Assessment

School	Program	Assessment	School Grade	# Passing	# Failing	# of Completing Participants	Funding Weight	% Passing	% Failing	Cost of Assessments & Test Prep Used
AHS	Patient Care Assisting	CNA **	X	33	0	33	0.2	100%	0%	\$4,783.98
BHS	Patient Care Assisting	CNA **	X	14	0	14	0.2	100%	0%	\$2,044.00
MHS	Patient Care Assisting	CNA **	X	12	2	14	0.2	86%	14%	\$2,058.00
PBHS	Patient Care Assisting	CNA **	X	10	3	13	0.2	77%	23%	\$1,911.00
RHS	Patient Care Assisting	CNA **	X	15	0	15	0.2	100%	0%	\$2,205.00
THS	Patient Care Assisting	CNA **	X	36	1	37	0.2	97%	3%	\$5,439.00
<b>CNA ** Totals:</b>				<b>120</b>	<b>6</b>	<b>126</b>		<b>95%</b>	<b>5%</b>	<b>\$18,440.98</b>

VHS	Interior Design	Chief Architect Apprentice	X	14	16	30	0.2	47%	53%	\$1,395.00
<b>Chief Architect Apprentice Totals:</b>				<b>14</b>	<b>16</b>	<b>30</b>		<b>47%</b>	<b>53%</b>	<b>\$1,395.00</b>

AHS	First Responder	CMAA	X	7	10	17	0.1	41%	59%	\$2,872.49
CHS	Health & Wellness	CMAA	X	0	5	5	0.1	0%	100%	\$844.85
EGHS	Health & Wellness	CMAA	X	5	2	7	0.1	71%	29%	\$1,182.79
HHS	Health & Wellness	CMAA	X	9	28	37	0.1	24%	76%	\$6,251.89
HHS	Medical Admin Specialist	CMAA	X	1	12	13	0.1	8%	92%	\$2,196.61
VHS	Health Science - Dental	CMAA	X	10	10	20	0.1	50%	50%	\$3,379.40
<b>CMAA Totals:</b>				<b>32</b>	<b>67</b>	<b>99</b>		<b>32%</b>	<b>68%</b>	<b>\$16,728.03</b>

PBHS	Early Childhood Ed	ECPC		3	0	3	Perkins Only	100%	0%	\$90.00
<b>ECPC Totals:</b>				<b>3</b>	<b>0</b>	<b>3</b>		<b>100%</b>	<b>0%</b>	<b>\$90.00</b>

SCHS	A/C Refrig & Heat	EPA		50	0	50		100%	0%	\$1,250.00
<b>EPA Totals:</b>				<b>50</b>	<b>0</b>	<b>50</b>		<b>100%</b>	<b>0%</b>	<b>\$1,250.00</b>

\*BETA test - Passing scores were able to be recorded as passing. Failing scores were able to be disregarded.

\*\* Offered through Dual Enrollment

\*\*\*Passed industry certification but was not in a CTE course for score to be recorded.

# 2012-13 Industry Certification By Assessment

School	Program	Assessment	School Grade	# Passing	# Failing	# of Completing Participants	Funding Weight	% Passing	% Failing	Cost of Assessments & Test Prep Used
EGHS	Automotive Service Tech	FLADA	X	5	6	11	0.2	45%	55%	\$879.45
HHS	Automotive Service Tech	FLADA	X	5	0	5	0.2	100%	0%	\$399.75
HHS	Automotive Service Tech	FLADA	X	5	3	8	0.2	63%	38%	\$639.60
MIHS	Automotive Service Tech	FLADA	X	5	1	6	0.2	83%	17%	\$479.70
RHS	Automotive Service Tech	FLADA	X	6	1	7	0.2	86%	14%	\$559.65
SHS	Automotive Service Tech	FLADA	X	8	0	8	0.2	100%	0%	\$639.60
THS	Automotive Service Tech	FLADA	X	3	0	3	0.2	100%	0%	\$239.85
<b>FLADA Totals:</b>				<b>37</b>	<b>11</b>	<b>48</b>		<b>77%</b>	<b>23%</b>	<b>\$3,837.60</b>

CBHS	GIS Technology	GIS Technician	X	4	5	9	0.2	44%	56%	
<b>GIS Technician Totals:</b>				<b>4</b>	<b>5</b>	<b>9</b>		<b>44%</b>	<b>56%</b>	<b>\$0.00</b>

SCHS	A/C Refrig & Heat	HEAT	X	34	2	36	0.3	94%	6%	\$720.00
<b>HEAT Totals:</b>				<b>34</b>	<b>2</b>	<b>36</b>		<b>94%</b>	<b>6%</b>	<b>\$720.00</b>

AHS	Finance Academy	MOS Bundle	X	5	10	15	0.2	33%	67%	\$6,893.47
BHS	Admin Office Specialist	MOS Bundle	X	11	0	11	0.2	100%	0%	\$6,893.47
CBHS	CCC	MOS Bundle	X	6	2	8	0.2	75%	25%	\$3,446.74
CBHS	Int'l Business	MOS Bundle	X	6	2	8	0.2	75%	25%	\$3,446.73
HHS	Business S & Mgmt	MOS Bundle	X	34	0	34	0.2	100%	0%	\$6,893.47
MHS	Finance Academy	MOS Bundle	X	13	12	25	0.2	52%	48%	\$6,893.47
MHS	CCC	MOS Bundle	X	2	0	2	0.2	100%	0%	\$0.00
MIHS	Admin Office Specialist	MOS Bundle	X	8	4	12	0.2	67%	33%	\$6,893.47
PBHS	Admin Office Specialist	MOS Bundle	X	12	0	12	0.2	100%	0%	\$6,893.47
SCHS	Admin Office Specialist	MOS Bundle	X	1	2	3	0.2	33%	67%	\$6,893.47
SHS	Admin Office Specialist	Skills Assessment Manager for MOS								\$4,116.25
VHS	Finance Academy	MOS Bundle	X	61	21	82	0.2	74%	26%	\$6,893.47
<b>MOS Bundle Totals:</b>				<b>159</b>	<b>53</b>	<b>212</b>		<b>75%</b>	<b>25%</b>	<b>\$66,157.48</b>

\*BETA test - Passing scores were able to be recorded as passing. Failing scores were able to be disregarded.

\*\* Offered through Dual Enrollment

\*\*\*Passed industry certification but was not in a CTE course for score to be recorded.

# 2012-13 Industry Certification By Assessment

School	Program	Assessment	School Grade	# Passing	# Failing	# of Completing Participants	Funding Weight	% Passing	% Failing	Cost of Assessments & Test Prep Used
CLMS	MS - CCC	Middle School Microsoft Office		13	0	13	0.1	100%	0%	\$100.00
CMS	MS - CCC	Middle School Microsoft Office		19	0	19	0.1	100%	0%	\$100.00
JAMS	MS - CCC	Middle School Microsoft Office		33	0	33	0.1	100%	0%	\$100.00
JEMS	MS - CCC	Middle School Microsoft Office		1	0	1	0.1	100%	0%	\$100.00
MCMS	MS - CCC	Middle School Microsoft Office		3	0	3	0.1	100%	0%	\$100.00
SWMS	MS - CCC	Middle School Microsoft Office		17	0	17	0.1	100%	0%	\$100.00
		<b>MOS Middle School - CCC Totals:</b>		86	0	86		100%	0%	\$1,000.00

<b>Microsoft Office Totals:</b>	245	53	298	82%	18%	<b>\$67,157.48</b>
---------------------------------	-----	----	-----	-----	-----	--------------------

CHS	PC Support	MTA Windows OS Fundamentals	X	3	2	5	0.2	60%	40%	\$2,096.66
HHS	PC Support	MTA Windows OS Fundamentals	X	4	8	12	0.2	33%	67%	\$3,692.66
BHS	PC Support	MTA Windows OS Fundamentals	X	1	0	1	0.2	100%	0%	\$1,198.66
		<b>MTA Windows OS Fundamentals:</b>		8	10	18		44%	56%	<b>\$6,987.98</b>

AHS	Construction Tech	NCCER Carpentry	X	68	0	68	0.2	100%	0%	\$2,050.00
MHS	Construction Tech	NCCER Carpentry	X	9	0	9	0.2	100%	0%	\$425.00
PBHS	Construction Tech	NCCER Carpentry	X	8	0	8	0.2	100%	0%	\$325.00
		<b>NCCER Carpentry Totals:</b>		85	0	85		100%	0%	<b>\$2,800.00</b>

CBHS	Fashion Design Services	NOCTI Apparel & Text Prod & Merch		12	2	14	Perkins Only	86%	14%	\$448.00
MHS	Fashion Design Services	NOCTI Apparel & Text Prod & Merch		8	1	9	Perkins Only	89%	11%	\$288.00
PBHS	Fashion Design Services	NOCTI Apparel & Text Prod & Merch		13	1	14	Perkins Only	93%	7%	\$448.00
RHS	Fashion Design Services	NOCTI Apparel & Text Prod & Merch		7	0	7	Perkins Only	100%	0%	\$224.00
SHS	Fashion Design Services	NOCTI Apparel & Text Prod & Merch		7	1	8	Perkins Only	88%	13%	\$256.00
THS	Fashion Design Services	NOCTI Apparel & Text Prod & Merch		12	1	13	Perkins Only	92%	8%	\$418.00
		<b>NOCTI Apparel &amp; Text Prod &amp; Merch Totals:</b>		47	5	52		90%	10%	<b>\$2,082.00</b>

\*BETA test - Passing scores were able to be recorded as passing. Failing scores were able to be disregarded.

\*\* Offered through Dual Enrollment

\*\*\*Passed industry certification but was not in a CTE course for score to be recorded.

# 2012-13 Industry Certification By Assessment

School	Program	Assessment	School Grade	# Passing	# Failing	# of Completing Participants	Funding Weight	% Passing	% Failing	Cost of Assessments & Test Prep Used
PBHS	Criminal Justice	NOCTI Criminal Justice		26	0	26	Perkins Only	100%	0%	\$513.00
RHS	Criminal Justice	NOCTI Criminal Justice		10	0	10	Perkins Only	100%	0%	\$228.00
		<b>NOCTI Criminal Justice Totals:</b>		36	0	36		100%	0%	\$741.00

CHS	Accounting Applications	NOCTI Accounting Basic		0	5	5	Perkins Only	0%	100%	\$95.00
		<b>NOCTI Accounting Basic Totals:</b>		0	5	5		0%	100%	\$95.00

SCHS	Teacher Assisting	ParaPro		13	1	14	Perkins Only	93%	7%	\$630.00
		<b>ParaPro Totals:</b>		13	1	14		93%	7%	\$630.00

BHS	Culinary Arts	ProStart Certificate of Achievement	X	4	0	4	0.2	100%	0%	\$185.00
		<b>ProStart Certificate of Achievement Totals:</b>		4	0	4		100%	0%	\$185.00

BHS	Culinary Arts	SafeStaff Food Handler Certification		84	0	84	Perkins Only	100%	0%	\$684.50
BHS	Culinary Arts	SafeStaff Food Handler Certification		33	0	33	Perkins Only	100%	0%	\$276.50
CHS	Culinary Arts	SafeStaff Food Handler Certification		64	0	64	Perkins Only	100%	0%	\$512.00
MHS	Culinary Arts	SafeStaff Food Handler Certification		45	0	45	Perkins Only	100%	0%	\$360.00
MHS	Culinary Arts	SafeStaff Food Handler Certification		74	0	74	Perkins Only	100%	0%	\$592.00
PBHS	Culinary Arts	SafeStaff Food Handler Certification		28	0	28	Perkins Only	100%	0%	\$224.00
PBHS	Culinary Arts	SafeStaff Food Handler Certification		26	0	26	Perkins Only	100%	0%	\$208.00
THS	Culinary Arts	SafeStaff Food Handler Certification		51	0	51	Perkins Only	100%	0%	\$408.00
		<b>SafeStaff Food Handler Certification Totals:</b>		405	0	405		100%	0%	\$3,265.00

\*BETA test - Passing scores were able to be recorded as passing. Failing scores were able to be disregarded.

\*\* Offered through Dual Enrollment

\*\*\*Passed industry certification but was not in a CTE course for score to be recorded.

# 2012-13 Industry Certification By Assessment

School	Program	Assessment	School Grade	# Passing	# Failing	# of Completing Participants	Funding Weight	% Passing	% Failing	Cost of Assessments & Test Prep Used
RHS	Hosp & Tourism	ServSafe Manager	X	18	0	18	0.1	100%	0%	\$684.00
BHS	Culinary Arts	ServSafe Manager	X	31	9	40	0.1	78%	23%	\$1,748.00
MHS	Culinary Arts	ServSafe Manager	X	21	0	21	0.1	100%	0%	\$798.00
PBHS	Culinary Arts	ServSafe Manager	X	15	5	20	0.1	75%	25%	\$760.00
THS	Culinary Arts	ServSafe Manager	X	18	12	30	0.1	60%	40%	\$1,140.00
BHS	Culinary Arts	ServSafe Manager**	X	3	1	4	0.1	75%	25%	\$152.00
CHS	Culinary Arts	ServSafe Manager**	X	14	2	16	0.1	88%	13%	\$608.00
MHS	Culinary Arts	ServSafe Manager**	X	18	0	18	0.1	100%	0%	\$684.00
PBHS	Culinary Arts	ServSafe Manager**	X	16	1	17	0.1	94%	6%	\$646.00
THS	Culinary Arts	ServSafe Manager**	X	6	5	11	0.1	55%	45%	\$418.00
<b>ServSafe Manager Totals:</b>				<b>160</b>	<b>35</b>	<b>195</b>	<b>\$ 49,803.42</b>	<b>82%</b>	<b>18%</b>	<b>\$7,638.00</b>

EGHS	Marine Service	Skills Connect Assessment Marine Svc		6	21	27	Perkins Only	22%	78%	\$540.00
<b>Skills Connect Assessment Marine Svc Totals:</b>				<b>6</b>	<b>21</b>	<b>27</b>		<b>22%</b>	<b>78%</b>	<b>\$540.00</b>

AHS	Engineering Technology	Solidworks	X	5	3	8	0.1	63%	38%	\$2,038.10
BHS	Engineering Technology	Solidworks	X	19	14	33	0.1	58%	42%	\$2,038.10
EGHS	Engineering Technology	Solidworks	X	3	3	6	0.1	0%	0%	\$2,038.10
HHS	Automation & Production	Solidworks	X	0	0	0	0.1	0%	0%	\$2,038.10
MHS	Engineering Technology	Solidworks	X	30	5	35	0.1	86%	14%	\$2,038.10
PBHS	Engineering Technology	Solidworks	X	5	5	10	0.1	50%	50%	\$2,038.10
SCHS	Engineering Technology	Solidworks	X	6	7	13	0.1	46%	54%	\$2,038.10
<b>Solidworks Totals:</b>				<b>68</b>	<b>37</b>	<b>105</b>		<b>65%</b>	<b>35%</b>	<b>\$14,266.70</b>

EGHS	Early Childhood Ed	Staff Credential		15	0	15	Perkins Only	100%	0%	\$450.00
MIHS	Early Childhood Ed	Staff Credential		16	0	16	Perkins Only	100%	0%	\$480.00
PBHS	Early Childhood Ed	Staff Credential		6	0	6	Perkins Only	100%	0%	\$180.00
SHS	Early Childhood Ed	Staff Credential		17	0	17	Perkins Only	100%	0%	\$510.00
VHS	Early Childhood Ed	Staff Credential		26	0	26	Perkins Only	100%	0%	\$780.00
<b>Staff Credential Totals:</b>				<b>80</b>	<b>0</b>	<b>80</b>		<b>100%</b>	<b>0%</b>	<b>\$2,400.00</b>

\*BETA test - Passing scores were able to be recorded as passing. Failing scores were able to be disregarded.

\*\* Offered through Dual Enrollment

\*\*\*Passed industry certification but was not in a CTE course for score to be recorded.

# 2012-13 Industry Certification By Assessment

School	Program	Assessment	School Grade	# Passing	# Failing	# of Completing Participants	Funding Weight	% Passing	% Failing	Cost of Assessments & Test Prep Used
HHS	Environmental Water	Water Treatment Plant Operator C	X	0	5	5	0.2	0%	100%	\$500.00
		<b>Water Treatment Plant Operator C Totals:</b>		<b>0</b>	<b>5</b>	<b>5</b>		<b>0%</b>	<b>100%</b>	<b>\$500.00</b>
<b>District Totals:</b>				<b>2,435</b>	<b>778</b>	<b>3,213</b>		<b>75.80%</b>	<b>24.20%</b>	<b>\$224,369.77</b>

\*BETA test - Passing scores were able to be recorded as passing. Failing scores were able to be disregarded.

\*\* Offered through Dual Enrollment

\*\*\*Passed industry certification but was not in a CTE course for score to be recorded.

# Industry Certification By Program



**This page intentionally left blank.**



## 2012-13 Industry Certification By Program

School	Program	Assessment	School Grade	# Passing	# Failing	# of Completing Participants	Funding Weight	% Passing	% Failing	Cost of Assessments & Test Prep Used
SCHS	A/C Refrig & Heat	HEAT	X	34	2	36	0.3	94%	6%	\$ 720.00
SCHS	A/C Refrig & Heat	EPA		50	0	50		100%	0%	\$ 1,250.00
<b>A/C Refrig &amp; Heat Totals:</b>				<b>84</b>	<b>2</b>	<b>86</b>		<b>98%</b>	<b>2%</b>	<b>\$ 1,970.00</b>

CHS	Accounting Applications	NOCTI Accounting Basic		0	5	5	Perkins Only	0%	100%	\$ 95.00
<b>Accounting Applications Totals:</b>				<b>0</b>	<b>5</b>	<b>5</b>	<b>Perkins Only</b>	<b>0%</b>	<b>100%</b>	<b>\$ 95.00</b>

BHS	Admin Office Specialist	MOS Bundle	X	11	0	11	0.2	100%	0%	\$ 6,893.47
MIHS	Admin Office Specialist	MOS Bundle	X	8	4	12	0.2	67%	33%	\$ 6,893.47
PBHS	Admin Office Specialist	MOS Bundle	X	12	0	12	0.2	100%	0%	\$ 6,893.47
SCHS	Admin Office Specialist	MOS Bundle	X	1	2	3	0.2	33%	67%	\$ 6,893.47
SHS	Admin Office Specialist	Skills Assessment Manager for MOS	X					na	na	\$ 4,116.25
<b>Admin Office Specialist Totals:</b>				<b>32</b>	<b>6</b>	<b>38</b>		<b>84%</b>	<b>16%</b>	<b>\$ 31,690.13</b>

HHS	Automation & Production	Solidworks	X	0	0	0	0.1	0%	0%	\$ 2,038.10
<b>Automation &amp; Production Totals:</b>				<b>0</b>	<b>0</b>	<b>0</b>		<b>0%</b>	<b>0%</b>	<b>\$ 2,038.10</b>

CHS	Automotive Collision	ASE Student Test		13	12	25	Perkins Only	52%	48%	\$ 375.00
<b>Automotive Collision Totals:</b>				<b>13</b>	<b>12</b>	<b>25</b>		<b>52%</b>	<b>48%</b>	<b>\$ 375.00</b>

\*BETA test - Passing scores were able to be recorded as passing. Failing scores were able to be disregarded.

\*\* Offered through Dual Enrollment

\*\*\*Passed industry certification but was not in a CTE course for score to be recorded.

# 2012-13 Industry Certification By Program

School	Program	Assessment	School Grade	# Passing	# Failing	# of Completing Participants	Funding Weight	% Passing	% Failing	Cost of Assessments & Test Prep Used
EGHS	Automotive Service Tech	ASE Student Assessment		11	15	26	Perkins Only	42%	58%	\$ 390.00
HHS	Automotive Service Tech	ASE Student Assessment		15	5	20	Perkins Only	75%	25%	\$ 300.00
HHS	Automotive Service Tech	ASE Student Assessment		17	12	29	Perkins Only	59%	41%	\$ 435.00
MIHS	Automotive Service Tech	ASE Student Assessment		8	11	19	Perkins Only	42%	58%	\$ 285.00
RHS	Automotive Service Tech	ASE Student Assessment		15	0	15	Perkins Only	100%	0%	\$ 225.00
SHS	Automotive Service Tech	ASE Student Assessment		7	16	23	Perkins Only	30%	70%	\$ 345.00
THS	Automotive Service Tech	ASE Student Assessment		2	5	7	Perkins Only	29%	71%	\$ 105.00
EGHS	Automotive Service Tech	FLADA	X	5	6	11	0.2	45%	55%	\$ 879.45
HHS	Automotive Service Tech	FLADA	X	5	0	5	0.2	100%	0%	\$ 399.75
HHS	Automotive Service Tech	FLADA	X	5	3	8	0.2	63%	38%	\$ 639.60
MIHS	Automotive Service Tech	FLADA	X	5	1	6	0.2	83%	17%	\$ 479.70
RHS	Automotive Service Tech	FLADA	X	6	1	7	0.2	86%	14%	\$ 559.65
SHS	Automotive Service Tech	FLADA	X	8	0	8	0.2	100%	0%	\$ 639.60
THS	Automotive Service Tech	FLADA	X	3	0	3	0.2	100%	0%	\$ 239.85
<b>Automotive Service Tech Totals:</b>				<b>112</b>	<b>75</b>	<b>187</b>		<b>60%</b>	<b>40%</b>	<b>\$ 5,922.60</b>

HHS	Business Supervision & Mgmt	MOS Bundle	X	34	0	34	0.2	100%	0%	\$ 6,893.47
<b>Business Supervision &amp; Mgmt Totals:</b>				<b>34</b>	<b>0</b>	<b>34</b>		<b>100%</b>	<b>0%</b>	<b>\$ 6,893.47</b>

CBHS	CCC	MOS Bundle	X	6	2	8	0.2	75%	25%	\$ 3,446.73
MHS	CCC	MOS Bundle	X	2	0	2	0.2	100%	0%	\$ 0.00
<b>CCC Totals:</b>				<b>8</b>	<b>2</b>	<b>10</b>		<b>80%</b>	<b>20%</b>	<b>\$ 3,446.73</b>

CLMS	MS - CCC	Middle School Microsoft Office		13	0	13	0.1	100%	0%	\$ 100.00
CMS	MS - CCC	Middle School Microsoft Office		19	0	19	0.1	100%	0%	\$ 100.00
JAMS	MS - CCC	Middle School Microsoft Office		33	0	33	0.1	100%	0%	\$ 100.00
JEMS	MS - CCC	Middle School Microsoft Office		1	0	1	0.1	100%	0%	\$ 100.00
MCMS	MS - CCC	Middle School Microsoft Office		3	0	3	0.1	100%	0%	\$ 100.00
SWMS	MS - CCC	Middle School Microsoft Office		17	0	17	0.1	100%	0%	\$ 100.00
<b>MS - CCC (HMS, KMS, MAMS, SMS included)</b>				<b>86</b>	<b>0</b>	<b>86</b>		<b>100%</b>	<b>0%</b>	<b>\$ 1,000.00</b>
<b>Totals:</b>										

\*BETA test - Passing scores were able to be recorded as passing. Failing scores were able to be disregarded.  
 \*\* Offered through Dual Enrollment  
 \*\*\*Passed industry certification but was not in a CTE course for score to be recorded.

## 2012-13 Industry Certification By Program

School	Program	Assessment	School Grade	# Passing	# Failing	# of Completing Participants	Funding Weight	% Passing	% Failing	Cost of Assessments & Test Prep Used
BHS	Comm Tech	Adobe: Flash	X	13	12	25	0.2	52%	48%	\$ 1,317.50
PBHS	Comm Tech	Adobe: Flash	X	3	0	3	0.2	100%	0%	\$ 1,317.50
VHS	Comm Tech	Adobe: Flash	X	3	1	4	0.2	75%	25%	\$ 878.33
BHS	Comm Tech	Adobe: Photoshop	X	44	2	46	0.1	96%	4%	\$ 1,317.50
PBHS	Comm Tech	Adobe: Photoshop	X	32	0	32	0.1	100%	0%	\$ 1,317.50
SHS	Comm Tech	Adobe: Photoshop	X	18	2	20	0.1	90%	10%	\$ 2,635.00
VHS	Comm Tech	Adobe: Photoshop	X	18	4	22	0.1	82%	18%	\$ 2,635.00
VHS	Comm Tech	Adobe: Photoshop	X	28	12	40	0.1	70%	30%	\$ 878.34
VHS	Comm Tech	Adobe: Premiere Pro	X	1	0	1	0.1	100%	0%	\$ 878.33
<b>Comm Tech Totals:</b>				<b>160</b>	<b>33</b>	<b>193</b>		<b>83%</b>	<b>17%</b>	<b>\$ 13,175.00</b>

AHS	Construction Tech	NCCER Carpentry	X	68	0	68	0.2	100%	0%	\$ 2,050.00
MHS	Construction Tech	NCCER Carpentry	X	9	0	9	0.2	100%	0%	\$ 425.00
PBHS	Construction Tech	NCCER Carpentry	X	8	0	8	0.2	100%	0%	\$ 325.00
<b>Construction Tech Totals:</b>				<b>85</b>	<b>0</b>	<b>85</b>		<b>100%</b>	<b>0%</b>	<b>\$ 2,800.00</b>

PBHS	Criminal Justice	NOCTI - Criminal Justice		26	0	26	Perkins Only	100%	0%	\$ 513.00
RHS	Criminal Justice	NOCTI - Criminal Justice		10	0	10	Perkins Only	100%	0%	\$ 228.00
<b>Criminal Justice Totals:</b>				<b>36</b>	<b>0</b>	<b>36</b>		<b>100%</b>	<b>0%</b>	<b>\$ 741.00</b>

\*BETA test - Passing scores were able to be recorded as passing. Failing scores were able to be disregarded.

\*\* Offered through Dual Enrollment

\*\*\*Passed industry certification but was not in a CTE course for score to be recorded.

# 2012-13 Industry Certification By Program

School	Program	Assessment	School Grade	# Passing	# Failing	# of Completing Participants	Funding Weight	% Passing	% Failing	Cost of Assessments & Test Prep Used
BHS	Culinary Arts	ProStart Certificate of Achievement	X	4	0	4	0.2	100%	0%	\$ 185.00
BHS	Culinary Arts	SafeStaff Food Handler Certification		84	0	84	Perkins Only	100%	0%	\$ 684.50
BHS	Culinary Arts	SafeStaff Food Handler Certification		33	0	33	Perkins Only	100%	0%	\$ 276.50
CHS	Culinary Arts	SafeStaff Food Handler Certification		64	0	64	Perkins Only	100%	0%	\$ 512.00
MHS	Culinary Arts	SafeStaff Food Handler Certification		45	0	45	Perkins Only	100%	0%	\$ 360.00
MHS	Culinary Arts	SafeStaff Food Handler Certification		74	0	74	Perkins Only	100%	0%	\$ 592.00
PBHS	Culinary Arts	SafeStaff Food Handler Certification		28	0	28	Perkins Only	100%	0%	\$ 224.00
PBHS	Culinary Arts	SafeStaff Food Handler Certification		26	0	26	Perkins Only	100%	0%	\$ 208.00
THS	Culinary Arts	SafeStaff Food Handler Certification		51	0	51	Perkins Only	100%	0%	\$ 408.00
BHS	Culinary Arts	ServSafe Manager	X	31	9	40	0.1	78%	23%	\$ 1,748.00
MHS	Culinary Arts	ServSafe Manager	X	21	0	21	0.1	100%	0%	\$ 798.00
PBHS	Culinary Arts	ServSafe Manager	X	15	5	20	0.1	75%	25%	\$ 760.00
THS	Culinary Arts	ServSafe Manager	X	18	12	30	0.1	60%	40%	\$ 1,140.00
BHS	Culinary Arts	ServSafe Manager**	X	3	1	4	0.1	75%	25%	\$ 152.00
CHS	Culinary Arts	ServSafe Manager**	X	14	2	16	0.1	88%	13%	\$ 608.00
MHS	Culinary Arts	ServSafe Manager**	X	18	0	18	0.1	100%	0%	\$ 684.00
PBHS	Culinary Arts	ServSafe Manager**	X	16	1	17	0.1	94%	6%	\$ 646.00
THS	Culinary Arts	ServSafe Manager**	X	6	5	11	0.1	55%	45%	\$ 418.00
<b>Culinary Arts Totals:</b>				<b>551</b>	<b>35</b>	<b>586</b>		<b>94%</b>	<b>6%</b>	<b>\$ 10,404.00</b>

VHS	Dental Aide	CMAA	X	10	10	20	0.1	50%	50%	\$ 3,379.40
<b>Dental Aide Totals:</b>				<b>10</b>	<b>10</b>	<b>20</b>	<b>0.1</b>	<b>50%</b>	<b>50%</b>	<b>\$ 3,379.40</b>

EGHS	Digital Design	Adobe: Dreamweaver	X	1	0	1	0.2	100%	0%	\$ 658.75
BHS	Digital Design	Adobe: Flash	X	1	1	2	0.2	50%	50%	\$ 1,317.50
RHS	Digital Design	Adobe: Flash	X	1	0	1	0.2	100%	0%	\$ 1,317.50
EHS	Digital Design	Adobe: InDesign Associate PILOT	X	2	4	6	PILOT	33%	67%	\$ 2,635.00
AHS	Digital Design	Adobe: Photoshop	X	16	3	19	0.1	84%	16%	\$ 878.33
BHS	Digital Design	Adobe: Photoshop	X	31	14	45	0.1	69%	31%	\$ 1,317.50
EGHS	Digital Design	Adobe: Photoshop	X	19	0	19	0.1	100%	0%	\$ 658.75
MHS	Digital Design	Adobe: Photoshop	X	18	0	18	0.1	100%	0%	\$ 2,635.00
RHS	Digital Design	Adobe: Photoshop	X	47	43	90	0.1	52%	48%	\$ 2,635.00
RHS	Digital Design	Adobe: Photoshop	X	20	1	21	0.1	95%	5%	\$ 1,317.50
THS	Digital Design	Adobe: Photoshop	X	45	5	50	0.1	90%	10%	\$ 2,635.00
<b>Digital Design Totals:</b>				<b>201</b>	<b>71</b>	<b>272</b>		<b>74%</b>	<b>26%</b>	<b>\$ 18,005.83</b>

\*BETA test - Passing scores were able to be recorded as passing. Failing scores were able to be disregarded.

\*\* Offered through Dual Enrollment

\*\*\*Passed industry certification but was not in a CTE course for score to be recorded.

## 2012-13 Industry Certification By Program

School	Program	Assessment	School Grade	# Passing	# Failing	# of Completing Participants	Funding Weight	% Passing	% Failing	Cost of Assessments & Test Prep Used
AHS	Drafting/ILL Design	Autodesk - Certified User AutoCAD*	X	1	1	2	0.2	50%	50%	\$ 160.00
BHS	Drafting/ILL Design	Autodesk - Certified User AutoCAD*	X	26	0	26	0.2	100%	0%	\$ 2,080.00
CHS	Drafting/ILL Design	Autodesk - Certified User AutoCAD*	X	7	7	14	0.2	50%	50%	\$ 1,200.00
EGHS	Drafting - CCC	Autodesk - Certified User AutoCAD**	X	8	0	8	0.2	100%	0%	\$ 640.00
EGHS	Drafting/ILL Design	Autodesk - Certified User AutoCAD*	X	15	1	16	0.2	94%	6%	\$ 880.00
HHS	Drafting/ILL Design	Autodesk - Certified User AutoCAD*	X	5	9	14	0.2	36%	64%	\$ 1,120.00
MIHS	Drafting/ILL Design	Autodesk - Certified User AutoCAD*	X	7	0	7	0.2	100%	0%	\$ 0.00
PBHS	Drafting/ILL Design	Autodesk - Certified User AutoCAD*	X	10	0	10	0.2	100%	0%	\$ 560.00
RHS	Drafting/ILL Design	Autodesk - Certified User AutoCAD*	X	18	0	18	0.2	100%	0%	\$ 1,440.00
SCHS	Drafting	Autodesk - Certified User AutoCAD*	X	19	0	19	0.2	100%	0%	\$ 0.00
SHS	Drafting/ILL Design	Autodesk - Certified User AutoCAD*	X	16	0	16	0.2	100%	0%	\$ 1,280.00
SCHS	Drafting	Autodesk - Certified User Inventor*	X	12	0	12	0.2	100%	0%	\$ 0.00
RHS	Drafting/ILL Design	Autodesk - Certified User Revit PILOT*		15	0	15	PILOT	100%	0%	\$ 0.00
SCHS	Drafting	Autodesk - Certified User Revit PILOT*		13	0	13	PILOT	100%	0%	\$ 0.00
<b>Drafting Totals:</b>				<b>172</b>	<b>18</b>	<b>190</b>		<b>91%</b>	<b>9%</b>	<b>\$ 9,360.00</b>
EGHS	Early Childhood Ed	Staff Credential		15	0	15	Perkins Only	100%	0%	\$ 450.00
MIHS	Early Childhood Ed	Staff Credential		16	0	16	Perkins Only	100%	0%	\$ 480.00
PBHS	Early Childhood Ed	ECPC		3	0	3	Perkins Only	100%	0%	\$ 90.00
PBHS	Early Childhood Ed	Staff Credential		6	0	6	Perkins Only	100%	0%	\$ 180.00
SHS	Early Childhood Ed	Staff Credential		17	0	17	Perkins Only	100%	0%	\$ 510.00
VHS	Early Childhood Ed	Staff Credential		26	0	26	Perkins Only	100%	0%	\$ 780.00
<b>Early Childhood Ed Totals:</b>				<b>83</b>	<b>0</b>	<b>83</b>		<b>100%</b>	<b>0%</b>	<b>\$ 2,490.00</b>
AHS	Engineering Technology	Solidworks	X	5	3	8	0.1	63%	38%	\$ 2,038.10
BHS	Engineering Technology	Solidworks	X	19	14	33	0.1	58%	42%	\$ 2,038.10
EGHS	Engineering Technology	Solidworks	X	3	3	6	0.1	0%	0%	\$ 2,038.10
MHS	Engineering Technology	Solidworks	X	30	5	35	0.1	86%	14%	\$ 2,038.10
PBHS	Engineering Technology	Solidworks	X	5	5	10	0.1	50%	50%	\$ 2,038.10
SCHS	Engineering Technology	Solidworks	X	6	7	13	0.1	46%	54%	\$ 2,038.10
<b>Engineering Technology Totals:</b>				<b>68</b>	<b>37</b>	<b>105</b>		<b>65%</b>	<b>35%</b>	<b>\$ 12,228.60</b>

\*BETA test - Passing scores were able to be recorded as passing. Failing scores were able to be disregarded.

\*\* Offered through Dual Enrollment

\*\*\*Passed industry certification but was not in a CTE course for score to be recorded.

# 2012-13 Industry Certification By Program

School	Program	Assessment	School Grade	# Passing	# Failing	# of Completing Participants	Funding Weight	% Passing	% Failing	Cost of Assessments & Test Prep Used
HHS	Environmental Water	Water Treatment Plant Operator C	X	0	5	5	0.2	0%	100%	\$ 600.00
<b>Environmental Water:</b>										
				<b>0</b>	<b>5</b>	<b>5</b>	<b>0.2</b>	<b>0%</b>	<b>100%</b>	<b>\$ 600.00</b>

CBHS	Fashion Design Services	NOCTI - Apparel & Text Prod & Mer		12	2	14	Perkins Only	86%	14%	\$ 448.00
MHS	Fashion Design Services	NOCTI - Apparel & Text Prod & Mer		8	1	9	Perkins Only	89%	11%	\$ 288.00
PBHS	Fashion Design Services	NOCTI - Apparel & Text Prod & Mer		13	1	14	Perkins Only	93%	7%	\$ 448.00
RHS	Fashion Design Services	NOCTI - Apparel & Text Prod & Mer		7	0	7	Perkins Only	100%	0%	\$ 224.00
SHS	Fashion Design Services	NOCTI - Apparel & Text Prod & Mer		7	1	8	Perkins Only	88%	13%	\$ 256.00
THS	Fashion Design Services	NOCTI - Apparel & Text Prod & Mer		12	1	13	Perkins Only	92%	8%	\$ 418.00
<b>Fashion Design Services Totals:</b>										
				<b>59</b>	<b>6</b>	<b>65</b>		<b>91%</b>	<b>9%</b>	<b>\$ 2,082.00</b>

AHS	Finance Academy	MOS Bundle	X	5	10	15	0.2	33%	67%	\$ 6,893.47
MHS	Finance Academy	MOS Bundle	X	13	12	25	0.2	52%	48%	\$ 6,893.47
VHS	Finance Academy	MOS Bundle	X	61	21	82	0.2	74%	26%	\$ 6,893.47
<b>Finance Academy Totals:</b>										
				<b>79</b>	<b>43</b>	<b>122</b>		<b>65%</b>	<b>35%</b>	<b>\$ 20,680.41</b>

AHS	First Responder	CMAA	X	7	10	17	0.1	41%	59%	\$ 2,872.49
<b>First Responder Totals:</b>										
				<b>7</b>	<b>10</b>	<b>17</b>	<b>0.1</b>	<b>41%</b>	<b>59%</b>	<b>\$ 2,872.49</b>

CBHS	GIS Technology	GIS Technician		4	5	9	0.2	44%	56%	0.00
<b>GIS Technology Totals:</b>										
				<b>4</b>	<b>5</b>	<b>9</b>	<b>0.2</b>	<b>44%</b>	<b>56%</b>	<b>0.00</b>

CHS	Health & Wellness	CMAA	X	0	5	5	0.1	0%	100%	\$ 844.85
EGHS	Health & Wellness	CMAA	X	5	2	7	0.1	71%	29%	\$ 1,182.79
HHS	Health & Wellness	CMAA	X	9	28	37	0.1	24%	76%	\$ 6,251.89
<b>Health &amp; Wellness Totals:</b>										
				<b>14</b>	<b>35</b>	<b>49</b>		<b>29%</b>	<b>71%</b>	<b>\$ 8,279.53</b>

\*BETA test - Passing scores were able to be recorded as passing. Failing scores were able to be disregarded.

\*\* Offered through Dual Enrollment

\*\*\*Passed industry certification but was not in a CTE course for score to be recorded.

## 2012-13 Industry Certification By Program

School	Program	Assessment	School Grade	# Passing	# Failing	# of Completing Participants	Funding Weight	% Passing	% Failing	Cost of Assessments & Test Prep Used
RHS	Hosp & Tourism	ServSafe	X	18	0	18	0.1	100%	0%	\$ 684.00
	<b>Hosp &amp; Tourism Totals:</b>									
				18	0	18	0.1	100%	0%	\$ 684.00

VHS	Interior Design	Chief Architect Apprentice	X	14	16	30	0.2	47%	53%	\$ 1,395.00
	<b>Interior Design Totals:</b>									
				14	16	30	0.2	47%	53%	\$ 1,395.00

CBHS	Int'l Business	MOS Bundle	X	6	2	8	0.2	75%	25%	\$ 3,446.73
	<b>Int'l Business Totals:</b>									
				6	2	8	0.2	75%	25%	\$ 3,446.73

EGHS	Marine Service	Skills Connect Assessment Marine Svc		6	21	27	Perkins Only	22%	78%	\$ 540.00
	<b>Marine Service Totals:</b>									
				6	21	27	Perkins Only	22%	78%	\$ 540.00

CBHS	Marketing Management	A*S*K* Marketing Fundamentals		0	7	7	Perkins Only	0%	100%	\$ 140.00
SCHS	Marketing Management	A*S*K* Marketing Fundamentals		5	13	18	Perkins Only	28%	72%	\$ 171.00
SHS	Marketing Management	A*S*K* Marketing Fundamentals		1	0	1	Perkins Only	100%	0%	\$ 360.00
VHS	Marketing Management	A*S*K* Marketing Fundamentals		1	10	11	Perkins Only	9%	91%	\$ 20.00
MIHS	Marketing Management	A*S*K* Marketing Fundamentals		1	8	9	Perkins Only	11%	89%	\$ 209.00
	<b>Marketing Management Totals:</b>									
				8	38	46		17%	83%	\$ 900.00

HHS	Medical Admin Specialist	CMAA	X	1	12	13	0.1	8%	92%	\$ 2,196.61
	<b>Medical Admin Specialist Totals:</b>									
				1	12	13	0.1	8%	92%	\$ 2,196.61

MHS	New Media	Adobe: Photoshop	X	26	39	65	0.1	40%	60%	\$ 1,317.50
MHS	New Media	Adobe: Flash	X	0	1	1	0.2	0%	100%	\$ 1,317.50
MHS	New Media	Adobe: Flash	X	16	3	19	0.2	84%	16%	\$ 2,635.00
	<b>New Media Totals:</b>									
				42	43	85		49%	51%	\$ 5,270.00

\*BETA test - Passing scores were able to be recorded as passing. Failing scores were able to be disregarded.

\*\* Offered through Dual Enrollment

\*\*\*Passed industry certification but was not in a CTE course for score to be recorded.

# 2012-13 Industry Certification By Program

School	Program	Assessment	School Grade	# Passing	# Failing	# of Completing Participants	Funding Weight	% Passing	% Failing	Cost of Assessments & Test Prep Used
AHS	Patient Care Assisting	CNA **	X	33	0	33	0.2	100%	0%	\$ 4,783.98
BHS	Patient Care Assisting	CNA **	X	14	0	14	0.2	100%	0%	\$ 2,044.00
MHS	Patient Care Assisting	CNA **	X	12	2	14	0.2	86%	14%	\$ 2,058.00
PBHS	Patient Care Assisting	CNA **	X	10	3	13	0.2	77%	23%	\$ 1,911.00
RHS	Patient Care Assisting	CNA **	X	15	0	15	0.2	100%	0%	\$ 2,205.00
THS	Patient Care Assisting	CNA **	X	36	1	37	0.2	97%	3%	\$ 5,439.00
<b>Patient Care Assisting Totals:</b>				<b>120</b>	<b>6</b>	<b>126</b>		<b>95%</b>	<b>5%</b>	<b>\$ 18,440.98</b>

BHS	PC Support	Adobe: Photoshop	X	3	0	3	0.1	100%	0%	\$ -
BHS	PC Support	MTA Windows OS Fundamentals	X	1	0	1	0.2	100%	0%	\$ 2,096.66
CHS	PC Support	MTA Windows OS Fundamentals	X	3	2	5	0.2	60%	40%	\$ 3,692.66
HHS	PC Support	MTA Windows OS Fundamentals	X	4	8	12	0.2	33%	67%	\$ 1,198.66
<b>PC Support Totals:</b>				<b>11</b>	<b>10</b>	<b>21</b>		<b>52%</b>	<b>48%</b>	<b>\$ 6,987.98</b>

MIHS	PLTW - ENGINEERING	Autodesk: Inventor	X	16	1	17	0.2	94%	6%	\$ 1,200.00
<b>PLTW - ENGINEERING Totals:</b>				<b>16</b>	<b>1</b>	<b>17</b>		<b>94%</b>	<b>6%</b>	<b>\$ 1,200.00</b>

SCHS	Teacher Assisting	ParaPro		13	1	14	Perkins Only	93%	7%	\$ 630.00
<b>Teacher Assisting Totals:</b>				<b>13</b>	<b>1</b>	<b>14</b>		<b>93%</b>	<b>7%</b>	<b>\$ 630.00</b>

BHS	TV Production	AVID	X	5	36	41	0.1	12%	88%	\$ 1,000.00
EHS	TV Production	AVID	X	0	9	9	0.1	0%	100%	\$ 1,000.00
MHS	TV Production	AVID***	X	1	11	12		8%	92%	\$ 1,000.00
SCHS	TV Production	AVID	X	1	30	31	0.1	3%	97%	\$ 1,000.00
THS	TV Production	AVID	X	0	34	34	0.1	0%	100%	\$ 1,000.00
VHS	TV Production	AVID	X	1	41	42	0.1	2%	98%	\$ 1,000.00
<b>TV Production Totals:</b>				<b>8</b>	<b>161</b>	<b>169</b>		<b>5%</b>	<b>95%</b>	<b>\$ 6,000.00</b>

\*BETA test - Passing scores were able to be recorded as passing. Failing scores were able to be disregarded.

\*\* Offered through Dual Enrollment

\*\*\*Passed industry certification but was not in a CTE course for score to be recorded.



## 2012-13 Industry Certification By Program

School	Program	Assessment	School Grade	# Passing	# Failing	# of Completing Participants	Funding Weight	% Passing	% Failing	Cost of Assessments & Test Prep Used
AHS	Web Development	Adobe: Dreamweaver	X	12	9	21	0.2	57%	43%	\$ 878.34
CHS	Web Development	Adobe: Dreamweaver	X	55	9	64	0.2	86%	14%	\$ 878.34
EGHS	Web Development	Adobe: Dreamweaver	X	2	0	2	0.2	100%	0%	\$ 658.75
MHS	Web Development	Adobe: Dreamweaver	X	22	1	23	0.2	96%	4%	\$ 658.75
MIHS	Web Development	Adobe: Dreamweaver	X	27	0	27	0.2	100%	0%	\$ 878.34
PBHS	Web Development	Adobe: Dreamweaver	X	42	16	58	0.2	72%	28%	\$ 878.34
THS	Web Development	Adobe: Dreamweaver	X	15	1	16	0.2	94%	6%	\$ 1,317.50
CHS	Web Development	Adobe: Flash	X	3	10	13	0.2	23%	77%	\$ 878.34
MHS	Web Development	Adobe: Flash	X	25	0	25	0.2	100%	0%	\$ 658.75
MIHS	Web Development	Adobe: Flash	X	7	1	8	0.2	88%	13%	\$ 878.33
PBHS	Web Development	Adobe: Flash	X	7	3	10	0.2	70%	30%	\$ 878.33
MHS	Web Development	Adobe: Illustrator PILOT		1	0	1	Pilot	100%	0%	0.00
AHS	Web Development	Adobe: Photoshop	X	0	3	3	0.1	0%	100%	\$ 878.33
CHS	Web Development	Adobe: Photoshop	X	3	1	4	0.1	75%	25%	\$ 878.33
EGHS	Web Development	Adobe: Photoshop	X	1	0	1	0.1	100%	0%	\$ 658.75
MHS	Web Development	Adobe: Photoshop	X	4	0	4	0.1	100%	0%	\$ 658.75
MIHS	Web Development	Adobe: Photoshop	X	15	1	16	0.1	94%	6%	\$ 878.33
PBHS	Web Development	Adobe: Photoshop	X	6	2	8	0.1	75%	25%	\$ 878.33
THS	Web Development	Adobe: Photoshop	X	38	1	39	0.1	97%	3%	\$ 1,317.50
MHS	Web Development	Adobe: Premiere Pro	X	1	0	1	0.1	100%	0%	\$ 658.75
<b>Web Development Totals:</b>				<b>286</b>	<b>58</b>	<b>344</b>		<b>83%</b>	<b>17%</b>	<b>\$ 16,249.18</b>

<b>Total</b>	<b>2,447</b>	<b>780</b>	<b>3,227</b>	<b>75.80%</b>	<b>24.20%</b>	<b>\$ 214,065.77</b>
--------------	--------------	------------	--------------	---------------	---------------	----------------------

\*BETA test - Passing scores were able to be recorded as passing. Failing scores were able to be disregarded.  
 \*\* Offered through Dual Enrollment  
 \*\*\*Passed industry certification but was not in a CTE course for score to be recorded.

**This page intentionally left blank.**

# Industry Certification Results Three Year Summary



**This page intentionally left blank.**

# 2012-13 Industry Certification Results

## Past 3 Years

Year	# of Students Identified	# Participants	# Passing	# Failing	# of Completing Participants	% Participants	% Passing	% Failing	% Completing Participants	Cost of Assessments Used
2012-13	3,716	3,513	2,447	780	3,227	94.5%	75.9%	24.1%	91.9%	\$ 224,469.77
2011-12	3,101	3,051	1,859	718	2,577	98.4%	72.1%	27.9%	84.5%	\$ 147,739.39
2010-11	2,638	2,318	1,201	873	2,074	88.0%	52.0%	38.0%	78.6%	\$ 116,330.44

**This page intentionally left blank.**



**This page intentionally left blank.**



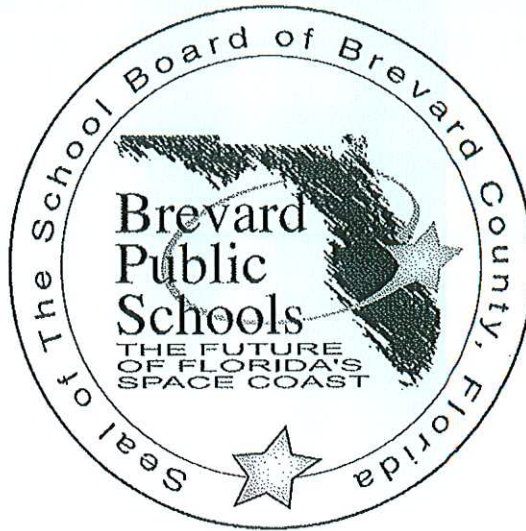
# 2012-13 Industry Certification Results Appendix

Assessment	Bonus FTE Weight	# Participants	# In Progress	# Passing	# Failing	% Passing	% Failing	Purchases towards Student Certification	Extra Costs	Earned Bonus FTE Calculation	Potential Funding	ROI
A*S*K* Marketing Fundamentals		46	0	8	38	17%	83%	\$ 900.00	\$ 340.00	0	\$ -	\$ (900.00)
Adobe: Dreamweaver	0.2	212	0	176	36	83%	17%			35.2	\$ 126,120.90	
Adobe: Flash	0.2	111	0	79	32	71%	29%			15.8	\$ 56,611.08	
Adobe: Illustrator PILOT		1	0	1	0	100%	0%			0	\$ -	
Adobe: InDesign Associate PILOT		6	0	2	4	33%	67%			0	\$ -	
Adobe: Photoshop	0.1	565	0	432	133	76%	24%			43.2	\$ 154,784.74	
Adobe: Premiere Pro	0.1	2	0	2	0	100%	0%			0.2	\$ 716.60	
Total Adobe		897	0	692	205	77%	23%	\$ 52,700.00	\$ -	94.4	\$ 338,233.31	\$ 285,533.31
ASE Student Assessment		164	0	88	76	54%	46%	\$ 2,460.00	\$ 735.00	0	\$ -	\$ (2,460.00)
Autodesk - Certified User AutoCAD*	0.2	142	0	124	18	87%	13%			0	\$ -	
Autodesk - Certified User AutoCAD***	0.2	8	0	8	0	100%	0%	\$ 640.00		24.8	\$ 88,857.90	\$ (640.00)
Autodesk - Certified User Inventor*	0.2	29	0	28	1	97%	3%			5.6	\$ 20,064.69	
Autodesk - Certified User Revit BETA*	0.2	28	0	28	0	100%	0%			0	\$ -	
Total Autodesk		199	0	180	19	90%	10%	\$ 9,920.00	\$ -	30.4	\$ 108,922.59	\$ 99,002.59
AVID ***	0.1	12	0	11	1	92%	8%	\$ 1,000.00		0	\$ -	\$ (1,000.00)
AVID	0.1	157	0	7	150	4%	96%	\$ 5,000.00		0.7	\$ 2,508.09	\$ (2,491.91)
CNA **	0.2	126	0	120	6	95%	5%	\$ 18,440.98		2.8	\$ 10,032.34	\$ (8,408.64)
Chief Architect Apprentice	0.2	30	0	14	16	47%	53%	\$ 1,395.00		3.2	\$ 11,465.54	\$ (9,070.54)
CMAA	0.1	99	0	32	67	32%	68%	\$ 16,728.03		0	\$ -	\$ (16,728.03)
ECPC **		3	0	3	0	100%	0%	\$ 90.00		0	\$ -	\$ (90.00)
EPA		50	0	50	0	100%	0%	\$ 1,250.00		0	\$ -	\$ (1,250.00)
FLADA	0.2	48	0	37	11	77%	23%	\$ 3,837.60		7.4	\$ 26,514.05	\$ 22,676.45
GIS Technician	0.2	9	0	4	5	44%	56%			0.8	\$ 2,866.38	\$ (2,866.38)
HEAT	0.3	36	0	34	2	94%	6%	\$ 720.00		10.2	\$ 36,546.40	\$ 35,826.40
MOS Bundle	0.2	471	283	159	53	75%	25%	\$ 66,157.48		31.8	\$ 113,938.76	\$ 47,781.28
Middle School Microsoft Office	0.1	86	0	86	0	100%	0%	\$ 1,000.00		8.6	\$ 30,813.63	\$ 29,813.63
MTA Windows OS Fundamentals	0.2	18	0	8	10	44%	56%	\$ 6,987.98		1.6	\$ 5,732.77	\$ (1,255.21)
NCCER Carpentry	0.2	112	27	85	0	100%	0%	\$ 2,800.00	\$ 3,825.00	17	\$ 60,910.66	\$ 58,110.66
NOCITI Apparel & Text Prod & Mer		52	0	47	5	90%	10%	\$ 2,082.00		0	\$ -	\$ (2,082.00)
NOCITI Criminal Justice		36	0	36	0	100%	0%	\$ 741.00		0	\$ -	\$ (741.00)
NOCITI Accounting Basic		5	0	5	0	100%	0%	\$ 95.00		0	\$ -	\$ (95.00)
ParaPro		14	0	13	1	93%	7%	\$ 630.00		0	\$ -	\$ (630.00)
ProStart Certificate of Achievement	0.2	4	0	4	0	100%	0%	\$ 185.00		0.8	\$ 2,866.38	\$ 2,681.38
SafeStaff Food Handler Certification		405	0	405	0	100%	0%	\$ 3,265.00		0	\$ -	\$ (3,265.00)
ServSafe Manager	0.1	129	0	103	26	80%	20%	\$ 5,130.00		10.3	\$ 36,904.69	\$ 31,774.69
ServSafe Manager **	0.1	66	0	57	9	86%	14%	\$ 2,508.00		0	\$ -	\$ (2,508.00)
Skills Connect Assessment Marine Svc		27	0	6	21	22%	78%	\$ 540.00	\$ 140.00	0	\$ -	\$ (540.00)
Solidworks	0.1	105	0	68	37	65%	35%	\$ 14,266.70		6.8	\$ 24,364.26	\$ 10,097.56
Staff Credential		80	0	80	0	100%	0%	\$ 2,400.00		0	\$ -	\$ (2,400.00)
Water Treatment Plant Operator C	0.1	5	0	0	5	0	100%	\$ 600.00		0	\$ -	\$ (600.00)
<b>Total</b>									\$ 224,469.77	\$ 5,040.00	\$ 812,619.86	\$ 588,150.09

\*BETA test - Passing scores were able to be recorded as passing. Failing scores were able to be disregarded.  
 \*\* Offered through Dual Enrollment  
 \*\*\* Passed industry certification but was not in a CTE course for score to be recorded.

**This page intentionally left blank.**





## NONDISCRIMINATION NOTICE

It is the policy of the School Board of Brevard County to offer the opportunity to all **students** to participate in appropriate programs and activities without regard to race, color, gender, religion, national origin, disability, marital status, or age, except as otherwise provided by Federal law or by Florida state law.

A **student** having a grievance concerning discrimination may contact:

Dr. Brian T. Binggeli  
Superintendent  
Brevard Public Schools

Ms. Cyndi Van Meter  
Associate Superintendent,  
Division of Curriculum  
and Instruction,  
Equity Coordinator

Mr. Robin L. Novelli  
Director  
Office of High  
School Programs

Ms. Pamela Treadwell  
Director  
ESE Administrative  
Support Services  
ADA/Section 504 Coordinator

School Board of Brevard County  
2700 Judge Fran Jamieson Way  
Viera, Florida 32940-6601  
(321) 633-1000

It is the policy of the School Board of Brevard County not to discriminate against **employees** or **applicants** for employment on the basis of race, color, religion, sex, national origin, participation and membership in professional or political organizations, marital status, age, or disability. Sexual harassment is a form of employee misconduct which undermines the integrity of the employment relationship, and is prohibited. This policy shall apply to recruitment, employment, transfers, compensation, and other terms and conditions of employment.

An **employee** or **applicant** having a grievance concerning employment may contact:

Ms. Susan Standley, Director  
Office of  
Employee Benefits

Ms. Joy Salamone, Director  
Human Resources Services  
and Labor Relations

School Board of Brevard County  
2700 Judge Fran Jamieson Way  
Viera, Florida 32940-6601  
(321) 633-1000

This Publication or portions of this publication can be made available to persons with disabilities in a variety of formats, including large print, Braille or audiotape. Telephone or written request should include your name, address, and telephone number. Requests should be made to Kim Parker, Exceptional Education Projects, 633-1000, ext. 535, at least two (2) weeks prior to the time you need the publication.

