



COMMUNITY INPUT MEETING

Thursday, December 9, 2021

Introductions

Principals

- Cocoa Beach Jr./Sr. High School Principal, Dr. Rendell
- Satellite High School Principal, Mr. Pruet
- DeLaura Middle School Principal, Mr. LeBrun

Patrick Space Force Base Leadership

- Col Edward Marshall
- Lt. Col Cherry Padilla
- Mr. Woodrow Wilson
- Ms. Pamela Jordan
- Ms. Susan Clark, School Liaison

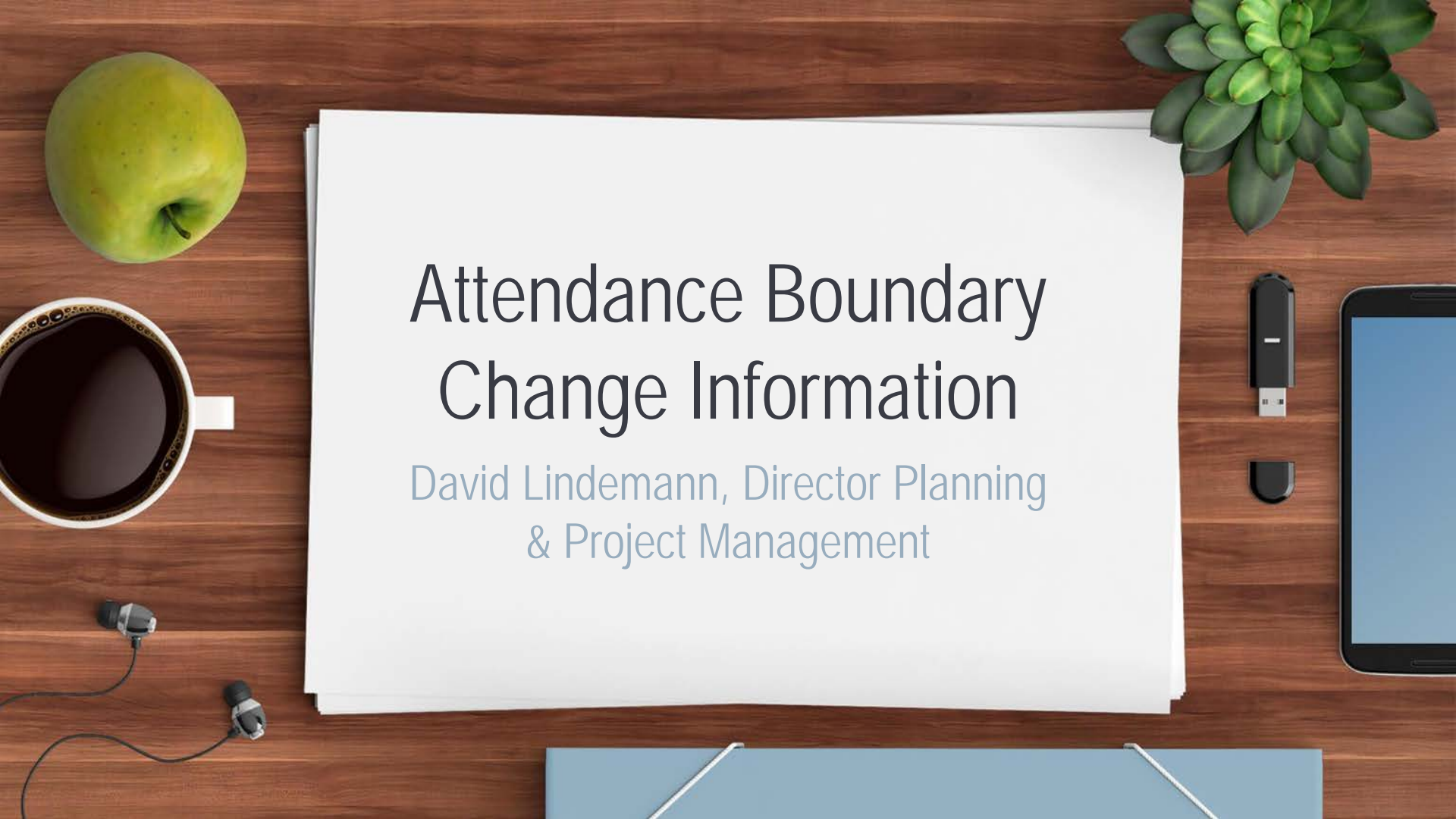
BPS Support Staff



Cocoa Beach Jr./Sr. High School

Principal, Dr. Mark Rendell

- ❖ School Welcome
- ❖ Video Presentation



Attendance Boundary Change Information

David Lindemann, Director Planning
& Project Management

Attendance Boundary Change Process

1 BPS District Staff Review

The Boundary Change Team evaluated the need for attendance boundary changes and prepared preliminary proposals for Cabinet to Review

2 School Board Workshop- October 26, 2021

Four potential attendance boundary changes were presented to the Board for review and discussion

3 School Board Information Agenda Item-November 16, 2021

The Board reviewed four attendance boundary proposal information items.

4 Community Input December 9, 2021

Community comments are included in the staff recommendation to the Board.

We are here
in the
process

What are the next steps in the attendance boundary change process?

5

School Board Votes to Hold Public Hearing- December 14, 2021

The Board will decide whether to proceed with the Public Hearing on the proposed attendance boundary changes and approve the Special Considerations.

6

Public Hearing- January 18, 2022

Final decision will be made on attendance boundary proposals.

7

Implementation in SY 2023 -2024

The approved attendance boundary change will be incorporated into the District's Student Accommodation Plan and implemented for SY 2023-2024.

Final Approval

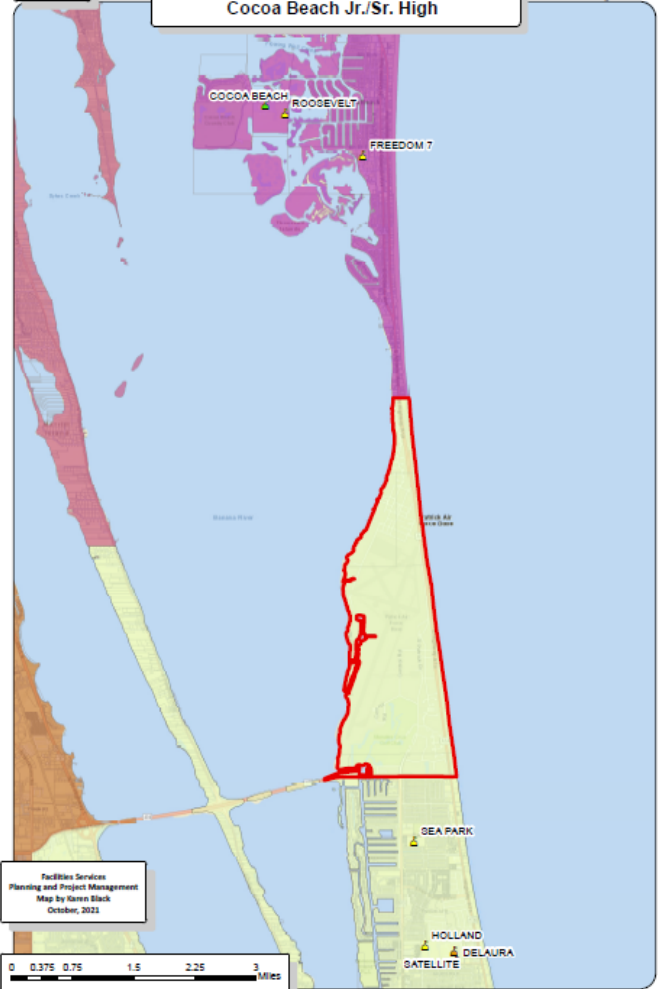


Proposed Change

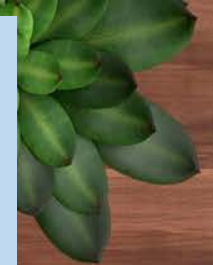
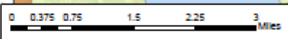
DeLaura Middle School &
Satellite High School to
Cocoa Beach Jr./Sr. High
School



Potential Redistricting
Pineda Causeway North
DeLaura Middle and Satellite High TO
Cocoa Beach Jr./Sr. High



Facilities Services
Planning and Project Management
Map by Karen Black
October, 2022



Proposed Change-DeLaura/Satellite to Cocoa Beach Jr./Sr. High School

Enrolled School	# of Students
Opportunity Scholarship (McKay)	3
Private School	1
Brevard Virtual	4
Eau Gallie	2
West Shore	1
Satellite	49
DeLaura	25
Rockledge	1
Viera	1
Hoover	2
Grand Total	89

Two Year Phase In Plan

SY 2022-2023

- ❖ Area remains zoned for DeLaura Middle and Satellite High Schools.
- ❖ ELO to Cocoa Beach Jr./Sr. High early without fee.
- ❖ Bus service available to DeLaura Middle and Satellite High same as current operations.
- ❖ Transportation can provide bus service to Cocoa Beach Jr./Sr. High as a special consideration for our military families.

SY 2023-2024

- ❖ Implement zoning change to Cocoa Beach Jr./Sr. High.
- ❖ ELO to stay at DeLaura Middle or Satellite High (\$30 fee & no transportation).
- ❖ Existing EPO students may remain in existing programs, regardless of grade level.
- ❖ Buses to Cocoa Beach Jr./Sr. High only.



Open Enrollment-Parental Choice Special Considerations:

- ❖ No fee for ELO to Cocoa Beach Jr./Sr. High for SY2022-2023.
- ❖ Affected students will be granted special consideration for staying at DeLaura/Satellite in SY2023-24, but must complete an ELO application (\$30 fee and no transportation).
- ❖ Existing Educational Program Option (EPO) students may continue their existing program, regardless of grade level.
- ❖ Bus service from north end of PSFB to Cocoa Beach Jr./Sr. High for SY 2022-2023.



Mobile Survey

Visit BrevardSchools.org, click on **About Us- Attendance Boundaries- 2022-2023 Attendance Boundary** for more information and to complete our public comment survey.



Click here

DeLaura Middle/Satellite High to Cocoa Beach Jr./Sr. High School

The District is working closely with the Base Liaison before moving forward. The intent of this proposal is to better serve students of military families at Patrick Space Force Base. The proposal will align with the elementary boundary so that Base siblings will be attending school in the same area. The proposal will better balance enrollment between DeLaura/Satellite and Cocoa Beach.

- Currently, 74 students are affected.
- Students residing on Patrick Space Force Base would attend Elementary and Secondary Schools located within the same community.
- Special considerations for rising 11th and 12th grade students at Satellite.
- Special considerations for rising 8th graders at DeLaura Middle School

Virtual Community Meeting: Thursday, December 9, 2021 at 5:30 p.m. via Zoom

at tinyurl.com/BPS/DeLauraSatelliteMeeting

Pre-register to attend [HERE](#).

[Click here to submit comments](#)

The Boundary Change Team, comprised of Brevard Public School employees including, as appropriate: Assistant Superintendents, school principals, educational program managers, Financial Services, Facilities Services Planning and Project Management, Transportation Services, Student



DeLaura Middle School and Satellite High School to Cocoa Beach Jr./Sr. High School Public Comment

The intent of this proposal is to better serve the students of military families at Patrick Space Force Base. The proposal will align with the elementary boundary so that Base siblings will be attending school in the same area. The proposal will better balance enrollment between DeLaura/Satellite and Cocoa Beach.



Questions and Comments

Please use the chat box or
raise hand for moderator



Thanks!

Any questions?

You can contact Facilities at:

attendanceboundarychange@brevardschools.org

or call 321-735-9735