

2016-2017 Student Accommodation Plan



School Board Members

DISTRICT 1

Ms. Misty Belford

DISTRICT 2

Mr. John Craig

DISTRICT 3

Ms. Amy Kneessy

DISTRICT 4

Ms. Karen Henderson

DISTRICT 5

Mr. Andy Ziegler

SUPERINTENDENT OF SCHOOLS

Desmond K. Blackburn, Ph.D.

2700 Judge Fran Jamieson Way

Viera, Florida 32940

Phone (321) 633-1000



TABLE OF CONTENTS

SECTION 1 OVERVIEW

- A. Summary
- B. Strategic Plan Relationship

SECTION 2 BALANCING ENROLLMENT TO CAPACITY

- A. Educational Location Option (ELO) Criteria
- B. The Requirement to Balance Enrollment to Capacity
- C. Options to Balance Enrollment to Capacity
- D. Policy 7110 – Student Accommodation
- E. Policy 7120 – Criteria for Balancing School Membership

SECTION 3 CAPACITY/ENROLLMENT ANALYSIS-2015-2016

- A. By Area
- B. By School Type

SECTION 4 CAPACITY/ENROLLMENT PROJECTIONS-2016-2017

- A. By Area
- B. By School Type

SECTION 5 CAPACITY/ENROLLMENT PROJECTIONS-2016-17 TO 2020-21

- A. By Area and Permanent Capacity Utilization
- B. By Area and Total Capacity Utilization
- C. By School Type and Permanent Capacity Utilization
- D. By School Type and Total Capacity Utilization

SECTION 6 RELOCATABLE CLASSROOM CHANGES-2016-2017

- A. By Area
- B. By School Type
- C. Relocatable Inventory 2015-2016

SECTION 7 STUDENT ENROLLMENT DATA

- A. Brevard Public Schools Feeder System
 - 1. 2015-2016 Feeder System
 - 2. 2016-2017 Feeder System
- B. Membership 1960-2015/Projection 2016-2020 (Chart)
- C. Actual/Projection Support Data

SECTION 8 FACILITIES PLANNING



Section 1

Overview

- A. Summary
- B. Strategic Plan Relationship



Summary

The Student Accommodation Plan is prepared by the Facility Services Department every spring and approved by the School Board prior to the summer break. The School Board of Brevard County has adopted this document, which compares projected student enrollment to projected school capacities, as a planning tool for the next school year. After the Plan is approved, it is implemented throughout the district.

- ☐ The information compiled in this document comes from several different sources. Financial Services and Facilities Services worked together this year to provide the projected student enrollment for the School District. Facilities Services provides the school capacities, permanent and relocatable, from the Florida Inventory of School Houses (FISH) Database. School Principals and Area Superintendents estimate their need for space to accommodate students based on the school programs and student enrollment projections. After the Senior Staff evaluates the information, recommendations are provided to the Superintendent and to the School Board for approval.
- ☐ This Plan assumes the continued use of relocatable classroom space. If the Plan is implemented, the School District will increase the number of relocatable classroom units from 227 during the 2015-2016 to 228 for the 2016-17 school year by moving four (4) relocatable units from other locations and converting from surplus to classroom use. Additionally, three (3) relocatable units will be converted from classroom to surplus.
- ☐ Schools have a usable life span of 50 years or more. During that time, student populations shift as new students move into new developments and current students matriculate and leave existing neighborhoods. These demographic shifts cause some schools to exceed their capacity while leaving other schools under-utilized. The District has several options available to balance student populations and more efficiently utilize the existing schools. One of the least disruptive options is to build new capacity, but with available permanent capacity for more than 10,000 additional students throughout the District, the Florida Department of Education may not approve the use of State funds for additional capacity. It is, therefore, assumed that other options such as “freezing” schools to out-of-area students, capping schools or special programs and changing attendance boundaries will be used to balance student enrollment to school capacity.
- ☐ School capacities contained in this Student Accommodation Plan are based on the FISH database as of December 1, 2015.



Strategic Plan Relationship

A new Strategic Plan for Brevard Public Schools is currently being drafted and will not be adopted by the time that the 2016-17 Student Accommodation Plan is finalized.

Since the new Strategic Plan is not available at the time of this publication, this Student Accommodation Plan refers to the previously implemented Strategic Plan and supports two Outcome Indicators in the 2013-18 BPS Strategic Plan.

☐ Goal 2: Safe, Healthy, and Productive Learning and Work

Operational Expectations – Provide adequate and appropriate facilities

- Outcome Indicator 2.1.1 – Maintain a maximum permanent capacity utilization of 110% and a maximum total capacity utilization of 100% in every school by the 2015-16 school year using relocatable capacity, membership redistricting, program modifications and new capacity

For the 2015-16 School Year, all Brevard District Schools are projected to be in compliance with Outcome Indicator 2.1.1.

☐ Goal 4: Fiscal Responsibility and Organizational Effectiveness

Operational Expectations – Maintain effective and efficient resource management

- Outcome Indicator 4.1.3 – Maintain total capacity utilization for the district between 80% and 90%

For the 2015-16 School Year, the Brevard Public School District is projected to be in compliance with Outcome Indicator 4.1.3.

Source: 2013-18 Brevard Public Schools Strategic Plan, updated 1/27/2015



Section 2

Balancing Enrollment to Capacity

- A. Educational Location Option (ELO) Criteria**
- B. The Requirement to Balance Enrollment to Capacity**
- C. Options to Balance Enrollment to Capacity**
- D. Policy 7110 – Student Accommodation**
- E. Policy 7120 – Criteria for Balancing School Membership**



Criteria for Educational Location Option (ELO)

Incoming ELO

Policy 7120: *“No new incoming applications will be approved for schools where student enrollment is projected to be greater than **90% of total capacity for the following year.**”* Under this policy and at the discretion of the Director of School Choice, the schools below are entirely or selectively “frozen” to **incoming** students for School Year 2016-2017.

Note that under Policy 7120, students enrolled in an Educational Program Opportunity (EPO) shall be limited to 100% of the total capacity of the school.

Schools Closed to <u>Incoming</u> Educational Location Option Students		
<i>Due to Projected Enrollment of 90% or Greater of Total Capacity and Recommendations Pursuant to District Policy 7120</i>		
South	Central	North
Indialantic	Fairglen	Apollo
Meadowlane Intermediate *	Ocean Breeze #	Challenger 7
Meadowlane Primary #	Quest #	Pinewood
Melbourne High	Satellite #	Oak Park
Port Malabar *	Surfside *	
Riviera *		
Sunrise		

* School greater than 100% capacity: Educational Location Option is open to students of school-based employees

Policy exception as identified by Office of School Choice

Note: Parents may not apply through an “Educational Location Option” to a Choice School or Magnet School. Admittance to Choice or Magnet Schools is through the online Educational Program Opportunity application process only.

Source: 2016-17 Brevard Public Schools Frozen to Incoming Educational Location Option (ELO) Students
Updated 1/6/2016



Balancing Enrollment to Capacity

The Requirement to Balance Enrollment to Capacity

The Growth Management Legislation enacted in 2005 required all local governments to implement School Concurrency by 2008. Based on this legislation and previous agreements, Brevard School Board and 15 local governments in Brevard County entered into the Interlocal Agreement for Public School Facility Planning and School Concurrency in June 2008. School Concurrency states that school capacity must be available in order for new residential development to be approved. During the 2011 legislative session, the growth management statutes were revised to require relocatable classroom capacity when determining school concurrency.

The Interlocal Agreement for Public School Facility Planning and School Concurrency between the School Board and 15 local governments was updated in 2014 to reflect changes in state legislation and to streamline the school concurrency process. The communities in Brevard continue to implement the school concurrency process to ensure adequate school facilities for the youth in Brevard County.

One of the provisions of the Interlocal Agreement is to ensure that schools have sufficient capacity to support projected student growth. The current agreement establishes a 100% Level of Service (LOS) for school concurrency using both permanent and relocatable capacity. In order to meet that standard, the School Board has completed the activities listed in the following paragraphs.

For the 2012-13 school year, attendance boundaries were changed at five high schools, one junior/senior high school, six middle schools and eight elementary schools to address projected over-capacity situations at one high school, one junior/senior high school, three middle schools and three elementary schools. In addition, one elementary school was closed and the attendance boundaries at seven elementary schools were changed to address projected under-utilization at those schools. Students were accommodated with a net increase of 13 relocatable classrooms.

For the 2013-14 school year, two elementary schools and one middle school were closed. The middle school, Clearlake, was integrated with the nearby high school Cocoa High to create a new Junior/Senior High School. To make this change, the attendance boundaries at both Cocoa and Rockledge High Schools, and at McNair Middle School had to be adjusted so that the middle and high school boundaries would be coincident. The boundaries of eight elementary schools were also changed to accommodate the students affected by the two closed elementary schools. Students were accommodated with a net decrease of 35 relocatable classrooms.

For the 2014-15 school year, no attendance boundaries were changed. A net increase of 10 relocatable classroom units were provided to accommodate the students.



School Board of Brevard County

FY 2016-2017 Student Accommodation Plan



For the 2015-16 school year, no attendance boundaries were changed. Students were accommodated with a net increase of 7 relocatable classrooms.

For the 2016-17 school year, no attendance boundary changes are proposed. A net increase of 1 relocatable classroom will be provided to accommodate the projected students and program needs.



Options for Balancing Enrollment to Capacity

The options available to the School Board to balance a school's student enrollment to its capacity vary in cost and disruption. The options include:

1. **Construct new capacity.**
2. **Add relocatable classroom buildings.**
3. **“Freeze” schools to out-of-area students.**
4. **Cap, modify, transfer or eliminate Choice / Special programs.**
5. **Cap enrollment at permanent capacity and bus new students to schools that have available capacity. (Cap and Bus)**
6. **Change school attendance boundaries. (Redistricting)**
7. **Multi-track, year-round school operations.**
8. **Split sessions (one group of students using a facility in the morning and another group using the same facility in the afternoon/early evening.**
9. **Close under-capacity schools to better utilize facilities and resources.**

1. Construct New Capacity

Adding new capacity is typically the most expensive option. All other options can be implemented solely at the discretion of the School Board, but constructing new capacity requires approval of the Florida Department of Education (FDOE) if state funds are to be used. Because Brevard County has more existing capacity than projected enrollment for the next five years, FDOE approval of additional capacity will likely be denied or, at best, limited to small additions in special situations (e.g., isolated geographic areas). Construction of new capacity with locally generated funds (impact fees, sales tax, etc.) does not require FDOE approval.

2. Add Relocatable Classrooms

The District owns 292 relocatable buildings that are currently suitable for classroom use. These classrooms can be used to mitigate temporary capacity issues and to provide the additional capacity that some special programs require.

3. “Freeze” Schools to Out-Of-Area Students

Policy 7120 freezes schools that are over 90% of their total capacity to incoming students. Additionally, schools are frozen when it is in the best interest of the School District due to unusual circumstances.

4. Cap, Modify, Transfer or Eliminate Choice / Special Programs

Policy 7120 caps enrollment in choice and special programs to the total capacity of the school. The programs can be capped or modified to fit within the capacity of the school, or they may be transferred to a school with capacity or eliminated, subject to federal or state guidelines.



5. Cap Enrollment at Permanent Capacity and Bus New Students to Schools That Have Available Capacity (“Cap and Bus”)

This option is sometimes used when an over-capacity situation is believed to be temporary in nature (a new school is under construction, projected declining enrollment at an over capacity school, etc.) or when none of the less disruptive options are feasible.

6. Change School Attendance Boundaries - Redistricting

Redistricting is the process of changing the attendance boundary of a school to move students from an over-crowded school to adjacent schools that have fewer students than capacity. It is typically one of the most challenging responsibilities of a School Board.

Standard “Hard” Redistricting

Traditionally, the School District has used “hard” redistricting to establish an attendance boundary for a new school or to change an attendance boundary for a school that is over capacity. Students within the redistricted area must attend a different school the following year. Typically, rising sixth, eighth, eleventh and twelfth graders are “grandfathered,” allowing them to complete their education at their current school.

7. Multi-Track Year-Round School Operations

When multi-track year-round school scheduling is implemented, it increases the effective capacity of a school by 33% because the school will be in use during the summer months. Because of difficulties coordinating family activities like vacations, this option has not been popular.

8. Split Sessions

This option involves splitting the student body into two groups. One group attends school from early in the morning to about noon. The other group attends from noon to late in the afternoon. While this option effectively doubles a schools capacity, there is less time for each group than there would be otherwise. This measure is considered to be the most disruptive means of solving over-capacity issues when space is limited and is used only when no other option is feasible.

9. School Closing

If a group of schools are under-utilized in an area of projected stable or declining enrollment, the School Board may choose to close one or more of those schools if the adjacent schools have sufficient capacity to serve the students from the closed school(s). The more efficient utilization of the remaining schools saves resources that can be better spent on the students' education rather than on keeping several partly-used schools open. The additional enrollment in the remaining schools can provide more programs and other educational opportunities for students than existed in the existing schools with smaller enrollments.



Note: Policy 7110 is shown below as currently adopted, but it will be revised for consistency with the revisions to Policy 7120 that were recently adopted on 2/23/2016.

Policy 7110

Student Accommodation

The Board recognizes the need to define the criteria for implementation of strategies for student housing when student enrollment exceeds the design capacity of a school or falls below a minimum acceptable threshold.

Definitions

For purposes of this policy, the following definitions apply:

A. Capacity

1. **Design Capacity:** The maximum number of students designed to be housed at the school based on the satisfactory factored permanent capacity, scheduled on a traditional calendar, contained in the Florida Inventory of School Houses (FISH) database at the time of the Full-Time Equivalent (FTE) survey in October of the current school year.
2. **Total Capacity:** The maximum number of students designed to be housed at the school based on the satisfactory factored permanent and relocatable capacity, scheduled on a traditional calendar, contained in the Florida Inventory of School Houses (FISH) database at the time of the Full-Time Equivalent (FTE) survey in October of the current school year.

B. Student Enrollment

The number of students enrolled at the school during the Full-Time Equivalent (FTE) survey in October of the current school year.

Strategies

- A. If student enrollment is projected to be greater than ninety percent (90%) of design capacity, the following individual strategies or a combination of strategies may be used:
 1. "Freeze" the school to incoming out-of-area students (see Policy [7120](#) for exceptions).
 2. Program offerings at the school may be modified, transferred to a school with available design capacity, or eliminated.



School Board of Brevard County

FY 2016-2017 Student Accommodation Plan



- B. If student enrollment is projected to be greater than 100% of design capacity, the following individual strategies or a combination of strategies may be used to adequately accommodate the students:
 - 1. Provide relocatable classrooms.
 - 2. "Freeze" the school to all out-of-area students except for students of employees based at the school (Policy [7120](#)).
 - 3. Modify, transfer, or eliminate existing program offerings at the school.
 - 4. "Cap" student enrollment at the school and bus all new students to adjacent schools with available design capacity.
 - 5. Create new attendance boundaries to redistribute students to schools with available design capacity.
 - 6. Construct new capacity.
- C. The Board does not consider year round schedules as an appropriate strategy to address school capacity issues. Double session schedules may be used as a strategy on a temporary basis while new capacity is being constructed.
- D. Schools may be considered for closure for reasons of efficiency or financial necessity.

Implementation Flexibility

The Superintendent shall develop administrative procedures to implement this policy. The Board provides to the Superintendent flexibility in the implementation of this policy and the administrative procedures due to extenuating circumstances, subject to Board approval. The Board expects recommendations relative to this policy to be brought forward on an annual basis as a part of a student accommodation plan for the next school year.

F.S. 1001.41, 1013.37, 1013.45

Revised 7/15/03
Revised 4/12/05
Revised 4/22/08
Revised 4/8/14



Policy 7120

Criteria For Balancing School Membership to Capacity

The Board recognizes the need to define criteria for the implementation of strategies to meet the Level of Service requirements established by the Board and contained in the Interlocal Agreement for Public School Facility Planning and School Concurrency.

Definitions

For purposes of this policy, the following definitions apply:

A. **Capacity**

The capacity of a school shall be 100% of the total building capacity on the date of the fall FTE count.

B. **Current Students**

All students attending a school at the end of the school year prior to redistricting.

C. **Enclave**

A portion of a school's attendance boundary that is separate from the boundary within which the school is located.

D. **Fall FTE Count**

The Fall Full Time Equivalent (FTE) student count is conducted each October. It is the official count of the number of students in each school for that school year.

E. **Educational Location Option**

The option to attend a school other than the school serving the parent's residence.

F. **Projected Enrollment**

The official projection of the number of students in each school for the next five (5) school years is published each December.

G. **Prospective Students**

All students living in the redistricted boundary area that will be "new" to the school.

Clarifications:

1. All incoming Kindergarten students at an elementary school, all incoming 7th grade students at a middle school or junior/senior high school and all incoming 9th grade students at a high school are prospective students.
2. All students moving into the redistricted boundary area are prospective students, regardless of the grade level.

H. **Redistricted Boundary Area**

That portion of a school attendance area that is assigned (redistricted) to another school attendance area.



School Board of Brevard County

FY 2016-2017 Student Accommodation Plan



I. **School-Based Employees**

School District employees working at a school are considered to be school-based employees of that school.

J. **Schools of Choice**

There are five (5) Schools of Choice: Freedom 7 Elementary School; Robert Louis Stevenson Elementary School; West Melbourne Elementary School; Edgewood Jr./Sr. High School; and West Shore Jr./Sr. High School. Siblings of current students at these schools have preference.

K. **Sibling**

A student who lives within the same household with a common parent/guardian.

L. **Sibling Preference**

Family members of a current student residing in the same residence as the current student who begin their attendance at a school during a year in which the current student is attending the school. Siblings who do not begin their attendance at the school while the current student is attending the school do not qualify for sibling preference.

M. **Travel Time**

The average one (1) way commute time on as school bus.

Criteria for All Redistricting

- A. Busing - Travel time from the redistricted boundary area to the new school should not exceed forty-five (45) minutes. This criterion does not apply for students who attend an Exceptional Education Program.
- B. Enclaves - Redistricting should not create isolated areas of students (enclaves). Where possible, redistricting should eliminate existing enclaves.
- C. Socio-Economic Status - Redistricting should be accomplished with diversity as a consideration.

Specific Criteria for "Hard" Standard Redistricting

- A. All students living in or moving into the redistricted boundary area shall be required to attend the "new" school.
- B. Exceptions - Students may attend other schools as described in Educational Location Option, Employee Preference, Educational Program Opportunity and/or Exceptional Student Education Programs.

Criteria for Educational Location Option

- A. Students currently approved to attend a school outside of their normal attendance boundary who continue to meet the contract requirements must reapply each year to stay in the school they now attend unless they choose to return to their zoned school of attendance. Refer to Policy [5120](#) for contract requirements.



School Board of Brevard County

FY 2016-2017 Student Accommodation Plan



- B. No new incoming applications will be approved for schools where student enrollment is projected to be greater than ninety percent (90%) of total capacity for the following school year.
- C. If attendance boundary changes are necessary to address capacity issues at a school, existing Educational Location Option students will not be renewed to reduce or eliminate the need to change the school's attendance boundaries. Students of school-based employees are exempt from this provision.
- D. The Director of School Choice may "freeze" a school to new incoming Educational Location Option requests, regardless of the projected student enrollment to total capacity ratio, if the Director determines that this restriction is in the best interest of the School District.
- E. Sibling Preference does not apply to Educational Location Option students.
- F. Refer to Policy [5120](#) for the appeal process.

Criteria for Employee Preference

- A. Children of full-time School District employees may attend any school under the Educational Location Option, with the exception of the Schools of Choice. Entry requirements, enrollment and class size limitations, as well as, capacity are taken into consideration for assignment to the school. The capacity restriction does not apply to school-based employees.
- B. Only children of school-based employees working at the Schools of Choice may attend these schools via employee preference if the child meets the entry requirements.

Criteria for Educational Program Opportunity

- A. Enrollment in an Educational Program Opportunity shall be limited to 100% of the total capacity of the school.

Criteria for Exceptional Student Education and Special Programs

- A. Students enrolled in special programs (i.e., Exceptional Education, Teen Age Parent, and Alternative Learning) shall be assigned to the school closest to their home with capacity offering the special program(s).
- B. New McKay Scholarship students may be approved at the requested school(s) if:
 - 1. student enrollment is projected to be no more than ninety percent (90%) of the total capacity of the school for the following school year; and
 - 2. the student's Individual Education Plan (IEP) can be implemented at the school; and
 - 3. the personnel allocation plan can be implemented for the student's matrix level; and
 - 4. the school has no more than twenty-two percent (22%) ESE students (excluding gifted).



School Board of Brevard County

FY 2016-2017 Student Accommodation Plan



Implementation Flexibility

The Board provides to the Superintendent flexibility in the implementation of this policy due to extenuating circumstances. The Superintendent shall notify the Board of any exceptions.

F.S. 163.3180, 1001.41, 1001.42

Adopted 3/25/08

Revised 4/09

Revised 6/24/10

Revised 6/14/11

Revised 2/23/16



Section 3

Capacity / Enrollment Analysis 2015 - 2016

- A. By Area**
- B. By School Type**



2015-16 School Year

School Capacity and Student Enrollment Analysis by Area



School Information				Student	Permanent			2015-2016 Relocatables			Total		
School	Type	Grades	Utilization Factor (Note 1)	Membership (Note 2)	2015-16 Student Stations (Note 3)	Factored Capacity (Note 4)	Capacity In Use (Note 5)	Classroom Units (Note 6)	Student Stations (Note 7)	Factored Capacity (Note 8)	Total Student Stations (Note 9)	Total Factored Capacity (Note 9)	Total Capacity In Use (Note 9)
South Area													
Allen	Elementary	PK-6	100%	605	663	663	91%	5	88	88	751	751	81%
Columbia	Elementary	PK-6	100%	577	685	685	84%	3	66	66	751	751	77%
Discovery	Elementary	PK-6	100%	634	826	826	77%	7	154	154	980	980	65%
Gemini	Elementary	K-6	100%	483	667	667	72%	2	44	44	711	711	68%
Harbor City	Elementary	PK-6	100%	434	453	453	96%	8	176	176	629	629	69%
Indialantic	Elementary	K-6	100%	753	754	754	100%	2	44	44	798	798	94%
Jupiter	Elementary	PK-6	100%	810	780	780	104%	7	150	150	930	930	87%
Lockmar	Elementary	PK-6	100%	721	892	892	81%				892	892	81%
McAuliffe	Elementary	PK-6	100%	744	754	754	99%	8	164	164	918	918	81%
Meadowlane Intermediate	Elementary	3-6	100%	1,001	894	894	112%	11	220	220	1,114	1,114	90%
Meadowlane Primary	Elementary	K-6	100%	742	824	824	90%				824	824	90%
Palm Bay	Elementary	PK-6	100%	815	829	829	98%	8	176	176	1,005	1,005	81%
Port Malabar	Elementary	PK-6	100%	761	768	768	99%	4	84	84	852	852	89%
Riviera	Elementary	PK-6	100%	690	689	689	100%	4	88	88	777	777	89%
Sunrise	Elementary	PK-6	100%	844	895	895	94%				895	895	94%
Turner	Elementary	PK-6	100%	689	830	830	83%	2	44	44	874	874	79%
University Park	Elementary	PK-6	100%	617	679	679	91%	6	132	132	811	811	76%
West Melbourne	Elementary	K-6	100%	551	618	618	89%				618	618	89%
Westside	Elementary	K-6	100%	700	835	835	84%	1	22	22	857	857	82%
Central	Middle	7-8	90%	1,142	1,694	1,525	75%				1,694	1,525	75%
Hoover	Middle	7-8	90%	507	732	659	77%				732	659	77%
Southwest	Middle	7-8	90%	882	1,308	1,177	75%				1,308	1,177	75%
Stone	Middle	7-8	90%	836	1,126	1,013	83%				1,126	1,013	83%
West Shore	Jr / Sr High	7-12	90%	957	1,232	1,109	86%	7	172	155	1,404	1,264	76%
Bayside	High	9-12	95%	1,687	2,353	2,235	76%				2,353	2,235	76%
Heritage	High	9-12	95%	1,851	2,436	2,314	80%				2,436	2,314	80%
Melbourne	High	9-12	95%	2,227	2,439	2,317	96%				2,439	2,317	96%
Palm Bay	High	PK, 9-12	95%	1,570	2,576	2,447	64%	7	175	166	2,751	2,613	60%
Totals: South Area				24,830	30,231	29,131	85%	92	1,999	1,973	32,230	31,104	80%

South Area Group Totals	Elementary	13,171	14,335	14,335	92%	78	1,652	1,652	15,987	15,987	82%
	Middle	3,367	4,860	4,374	77%	-	-	-	4,860	4,374	77%
	Jr/Sr High	957	1,232	1,109	86%	7	172	155	1,404	1,264	76%
	High	7,335	9,804	9,313	79%	7	175	166	9,979	9,479	77%

2015-16 School Year

School Capacity and Student Enrollment Analysis by Area



School Information				Student	Permanent			2015-2016 Relocatables			Total		
School	Type	Grades	Utilization Factor (Note 1)	Membership (Note 2)	2015-16 Student Stations (Note 3)	Factored Capacity (Note 4)	Capacity In Use (Note 5)	Classroom Units (Note 6)	Student Stations (Note 7)	Factored Capacity (Note 8)	Total Student Stations (Note 9)	Total Factored Capacity (Note 9)	Total Capacity In Use (Note 9)
Central Area													
Andersen	Elementary	K-6	100%	705	840	840	84%	2	44	44	884	884	80%
Cambridge	Elementary	PK-6	100%	666	649	649	103%	6	116	116	765	765	87%
Creel	Elementary	PK-6	100%	931	1,088	1,088	86%	3	66	66	1,154	1,154	81%
Croton	Elementary	PK-6	100%	665	707	707	94%	4	88	88	795	795	84%
Endeavour	Elementary	PK-6	100%	836	852	852	98%	7	138	138	990	990	84%
Fairglen	Elementary	PK-6	100%	691	753	753	92%				753	753	92%
Golfview	Elementary	PK-6	100%	647	689	689	94%	4	88	88	777	777	83%
Holland	Elementary	PK-6	100%	432	605	605	71%				605	605	71%
Longleaf	Elementary	PK-6	100%	631	790	790	80%				790	790	80%
Manatee	Elementary	K-6	100%	846	866	866	98%	7	132	132	998	998	85%
Ocean Breeze	Elementary	PK-6	100%	532	498	498	107%	8	156	156	654	654	81%
Quest	Elementary	PK-6	100%	848	910	910	93%	3	40	40	950	950	89%
Sabal	Elementary	PK-6	100%	565	679	679	83%	5	106	106	785	785	72%
Saturn	Elementary	PK-6	100%	785	830	830	95%	6	128	128	958	958	82%
Sea Park	Elementary	PK-6	100%	330	439	439	75%				439	439	75%
Sherwood	Elementary	PK-6	100%	518	609	609	85%				609	609	85%
Suntree	Elementary	K-6	100%	649	689	689	94%	3	66	66	755	755	86%
Surfside	Elementary	K-6	100%	449	439	439	102%	3	62	62	501	501	90%
Williams	Elementary	PK-6	100%	559	627	627	89%	4	88	88	715	715	78%
DeLaura	Middle	7-8	90%	686	1,068	961	71%				1,068	961	71%
Johnson	Middle	7-8	90%	785	1,111	1,000	79%	1	22	20	1,133	1,020	77%
Kennedy	Middle	7-8	90%	608	749	674	90%	7	161	145	910	819	74%
McNair	Middle	7-8	90%	472	679	611	77%				679	611	77%
Cocoa	Jr / Sr High	PK, 7-12	90%	1,498	1,730	1,557	96%	10	250	225	1,980	1,782	84%
Eau Gallie	High	PK, 9-12	95%	1,713	2,050	1,948	88%	10	250	238	2,300	2,186	78%
Rockledge	High	9-12	95%	1,447	1,691	1,606	90%	3	75	71	1,766	1,677	86%
Satellite	High	PK, 9-12	95%	1,345	1,580	1,501	90%	1	25	24	1,605	1,525	88%
Viera	High	PK, 9-12	95%	2,002	2,246	2,134	94%	6	150	143	2,396	2,277	88%
Totals: Central Area				22,841	26,463	25,551	89%	103	2,251	2,184	28,714	27,735	82%

Central Area Group Totals	Elementary	12,285	13,559	13,559	91%	63	1,318	1,318	14,877	14,877	83%
	Middle	2,551	3,607	3,246	79%	8	183	165	3,790	3,411	75%
	Jr/Sr High	1,498	1,730	1,557	96%	10	250	225	1,980	1,782	84%
	High	6,507	7,567	7,189	91%	20	500	476	8,067	7,665	85%

2015-16 School Year

School Capacity and Student Enrollment Analysis by Area



School Information				Student	Permanent			2015-2016 Relocatables			Total		
School	Type	Grades	Utilization Factor (Note 1)	Membership (Note 2)	2015-16 Student Stations (Note 3)	Factored Capacity (Note 4)	Capacity In Use (Note 5)	Classroom Units (Note 6)	Student Stations (Note 7)	Factored Capacity (Note 8)	Total Student Stations (Note 9)	Total Factored Capacity (Note 9)	Total Capacity In Use (Note 9)
North Area													
Apollo	Elementary	K-6	100%	857	902	902	95%				902	902	95%
Atlantis	Elementary	PK-6	100%	582	703	703	83%				703	703	83%
Audubon	Elementary	PK-6	100%	644	761	761	85%				761	761	85%
Cape View	Elementary	PK-6	100%	426	548	548	78%				548	548	78%
Carroll	Elementary	K-6	100%	638	751	751	85%				751	751	85%
Challenger 7	Elementary	PK-6	100%	514	551	551	93%				551	551	93%
Coquina	Elementary	K-6	100%	553	627	627	88%	3	66	66	693	693	80%
Enterprise	Elementary	K-6	100%	539	707	707	76%	1	22	22	729	729	74%
Freedom 7	Elementary	K-6	100%	413	453	453	91%	1	22	22	475	475	87%
Imperial Estates	Elementary	K-6	100%	650	729	729	89%				729	729	89%
Mila	Elementary	PK-6	100%	495	707	707	70%				707	707	70%
Mims	Elementary	PK-6	100%	517	725	725	71%				725	725	71%
Oak Park	Elementary	PK-6	100%	856	888	888	96%	2	44	44	932	932	92%
Pinewood	Elementary	PK-6	100%	479	503	503	95%				503	503	95%
Roosevelt	Elementary	K-6	100%	375	599	599	63%				599	599	63%
Stevenson	Elementary	K-6	100%	489	569	569	86%				569	569	86%
Tropical	Elementary	K-6	100%	766	910	910	84%				910	910	84%
Jackson	Middle	7-8	90%	578	727	654	88%				727	654	88%
Jefferson	Middle	7-8	90%	615	942	848	73%				942	848	73%
Madison	Middle	7-8	90%	438	825	743	59%				825	743	59%
Cocoa Beach	Jr / Sr High	7-12	90%	1,102	1,253	1,128	98%	15	375	338	1,628	1,466	75%
Edgewood	Jr / Sr High	7-12	90%	949	1,100	990	96%	6	91	82	1,191	1,072	89%
Space Coast	Jr / Sr High	7-12	90%	1,474	1,975	1,778	83%	2	38	34	2,013	1,812	81%
Astronaut	High	9-12	95%	1,108	1,522	1,446	77%				1,522	1,446	77%
Merritt Island	High	PK, 9-12	95%	1,545	1,965	1,867	83%	2	50	48	2,015	1,915	81%
Titusville	High	9-12	95%	1,393	1,970	1,872	74%				1,970	1,872	74%
Totals: North Area				18,995	23,912	22,959	83%	32	708	656	24,620	23,615	80%

North Area Group Totals	Elementary	9,793	11,633	11,633	84%	7	154	154	11,787	11,787	83%
	Middle	1,631	2,494	2,245	73%	-	-	-	2,494	2,245	73%
	Jr/Sr High	3,525	4,328	3,896	91%	23	504	454	4,832	4,350	81%
	High	4,046	5,457	5,185	78%	2	50	48	5,507	5,233	77%

2015-16 School Year



School Capacity and Student Enrollment Analysis by Area

School Information				Student	Permanent			2015-2016 Relocatables			Total		
School	Type	Grades	Utilization Factor (Note 1)	Membership (Note 2)	2015-16 Student Stations (Note 3)	Factored Capacity (Note 4)	Capacity In Use (Note 5)	Classroom Units (Note 6)	Student Stations (Note 7)	Factored Capacity (Note 8)	Total Student Stations (Note 9)	Total Factored Capacity (Note 9)	Total Capacity In Use (Note 9)

School District Group Totals	Elementary	35,249	39,527	39,527	89%	150	3,124	3,124	42,651	42,651	83%
	Middle	7,549	10,961	9,865	77%	8	183	165	11,144	10,030	75%
	Jr/Sr High	5,980	7,290	6,562	91%	40	926	834	8,216	7,396	81%
	High	17,888	22,828	21,687	83%	29	725	690	23,553	22,377	80%

School District Grand Totals				66,666	80,606	77,641	86%	227	4,958	4,813	85,564	82,454	81%
-------------------------------------	--	--	--	---------------	---------------	---------------	------------	------------	--------------	--------------	---------------	---------------	------------

Notes:

Note 1: Utilization Factors are established by the Florida Department of Education's (FDOE) State Requirements for Educational Facilities (SREF).

Note 2: Student Membership based on Fall FTE Count (10/16/15)

Note 3: Permanent Student Stations are based on the information contained in the FDOE Florida Inventory of School Houses (FISH) database on 12/01/15

Note 4: Factored Capacity is calculated by multiplying Satisfactory Student Stations by the Utilization Factor. Total Factored Capacity is the addition of the Permanent Factored Capacity plus the Relocatable Factored Capacity.

Note 5: Capacity in Use is calculated by dividing the Projected Student Membership by the Permanent Factored Capacity.

Note 6: Relocatable Classroom Units are based on the information contained in the FDOE Florida Inventory of School Houses (FISH) database on 12/01/15

Note 7: Relocatable Student Stations are based on the information contained in the FDOE Florida Inventory of School Houses (FISH) database on 12/01/15

Note 8: Relocatable Factored Capacity is calculated by multiplying Satisfactory Relocatable Student Stations by the Utilization Factor.

Note 9: Totals are calculated by adding Permanent and Relocatable data.

2015-16 School Year

School Capacity and Student Enrollment Analysis by Type



School Information				Student	Permanent			2015-2016 Relocatables			Total		
School	Type	Grades	Utilization Factor (Note 1)	Membership (Note 2)	2015-16 Student Stations (Note 3)	Factored Capacity (Note 4)	Capacity In Use (Note 5)	Class-room Units (Note 6)	Student Stations (Note 7)	Factored Capacity (Note 8)	Total Student Stations (Note 9)	Total Factored Capacity (Note 9)	Total Capacity In Use (Note 9)
Allen	Elementary	PK-6	100%	605	663	663	91%	5	88	88	751	751	81%
Andersen	Elementary	K-6	100%	705	840	840	84%	2	44	44	884	884	80%
Apollo	Elementary	K-6	100%	857	902	902	95%				902	902	95%
Atlantis	Elementary	PK-6	100%	582	703	703	83%				703	703	83%
Audubon	Elementary	PK-6	100%	644	761	761	85%				761	761	85%
Cambridge	Elementary	PK-6	100%	666	649	649	103%	6	116	116	765	765	87%
Cape View	Elementary	PK-6	100%	426	548	548	78%				548	548	78%
Carroll	Elementary	K-6	100%	638	751	751	85%				751	751	85%
Challenger 7	Elementary	PK-6	100%	514	551	551	93%				551	551	93%
Columbia	Elementary	PK-6	100%	577	685	685	84%	3	66	66	751	751	77%
Coquina	Elementary	K-6	100%	553	627	627	88%	3	66	66	693	693	80%
Creel	Elementary	PK-6	100%	931	1,088	1,088	86%	3	66	66	1,154	1,154	81%
Croton	Elementary	PK-6	100%	665	707	707	94%	4	88	88	795	795	84%
Discovery	Elementary	PK-6	100%	634	826	826	77%	7	154	154	980	980	65%
Endeavour	Elementary	PK-6	100%	836	852	852	98%	7	138	138	990	990	84%
Enterprise	Elementary	K-6	100%	539	707	707	76%	1	22	22	729	729	74%
Fairglen	Elementary	PK-6	100%	691	753	753	92%				753	753	92%
Freedom 7	Elementary	K-6	100%	413	453	453	91%	1	22	22	475	475	87%
Gemini	Elementary	K-6	100%	483	667	667	72%	2	44	44	711	711	68%
Golfview	Elementary	PK-6	100%	647	689	689	94%	4	88	88	777	777	83%
Harbor City	Elementary	PK-6	100%	434	453	453	96%	8	176	176	629	629	69%
Holland	Elementary	PK-6	100%	432	605	605	71%				605	605	71%
Imperial Estates	Elementary	K-6	100%	650	729	729	89%				729	729	89%
Indialantic	Elementary	K-6	100%	753	754	754	100%	2	44	44	798	798	94%
Jupiter	Elementary	PK-6	100%	810	780	780	104%	7	150	150	930	930	87%
Lockmar	Elementary	PK-6	100%	721	892	892	81%				892	892	81%
Longleaf	Elementary	PK-6	100%	631	790	790	80%				790	790	80%
Manatee	Elementary	K-6	100%	846	866	866	98%	7	132	132	998	998	85%
McAuliffe	Elementary	PK-6	100%	744	754	754	99%	8	164	164	918	918	81%
Meadowlane Intermediate	Elementary	3-6	100%	1,001	894	894	112%	11	220	220	1,114	1,114	90%
Meadowlane Primary	Elementary	K-6	100%	742	824	824	90%				824	824	90%
Mila	Elementary	PK-6	100%	495	707	707	70%				707	707	70%
Mims	Elementary	PK-6	100%	517	725	725	71%				725	725	71%
Oak Park	Elementary	PK-6	100%	856	888	888	96%	2	44	44	932	932	92%
Ocean Breeze	Elementary	PK-6	100%	532	498	498	107%	8	156	156	654	654	81%

2015-16 School Year

School Capacity and Student Enrollment Analysis by Type



School Information				Student	Permanent			2015-2016 Relocatables			Total		
School	Type	Grades	Utilization Factor <small>(Note 1)</small>	Membership <small>(Note 2)</small>	2015-16 Student Stations <small>(Note 3)</small>	Factored Capacity <small>(Note 4)</small>	Capacity In Use <small>(Note 5)</small>	Class-room Units <small>(Note 6)</small>	Student Stations <small>(Note 7)</small>	Factored Capacity <small>(Note 8)</small>	Total Student Stations <small>(Note 9)</small>	Total Factored Capacity <small>(Note 9)</small>	Total Capacity In Use <small>(Note 9)</small>
Palm Bay	Elementary	PK-6	100%	815	829	829	98%	8	176	176	1,005	1,005	81%
Pinewood	Elementary	PK-6	100%	479	503	503	95%				503	503	95%
Port Malabar	Elementary	PK-6	100%	761	768	768	99%	4	84	84	852	852	89%
Quest	Elementary	PK-6	100%	848	910	910	93%	3	40	40	950	950	89%
Riviera	Elementary	PK-6	100%	690	689	689	100%	4	88	88	777	777	89%
Roosevelt	Elementary	K-6	100%	375	599	599	63%				599	599	63%
Sabal	Elementary	PK-6	100%	565	679	679	83%	5	106	106	785	785	72%
Saturn	Elementary	PK-6	100%	785	830	830	95%	6	128	128	958	958	82%
Sea Park	Elementary	PK-6	100%	330	439	439	75%				439	439	75%
Sherwood	Elementary	PK-6	100%	518	609	609	85%				609	609	85%
Stevenson	Elementary	K-6	100%	489	569	569	86%				569	569	86%
Sunrise	Elementary	PK-6	100%	844	895	895	94%				895	895	94%
Suntree	Elementary	K-6	100%	649	689	689	94%	3	66	66	755	755	86%
Surfside	Elementary	K-6	100%	449	439	439	102%	3	62	62	501	501	90%
Tropical	Elementary	K-6	100%	766	910	910	84%				910	910	84%
Turner	Elementary	PK-6	100%	689	830	830	83%	2	44	44	874	874	79%
University Park	Elementary	PK-6	100%	617	679	679	91%	6	132	132	811	811	76%
West Melbourne	Elementary	K-6	100%	551	618	618	89%				618	618	89%
Westside	Elementary	K-6	100%	700	835	835	84%	1	22	22	857	857	82%
Williams	Elementary	PK-6	100%	559	627	627	89%	4	88	88	715	715	78%
Central	Middle	7-8	90%	1,142	1,694	1,525	75%				1,694	1,525	75%
DeLaura	Middle	7-8	90%	686	1,068	961	71%				1,068	961	71%
Hoover	Middle	7-8	90%	507	732	659	77%				732	659	77%
Jackson	Middle	7-8	90%	578	727	654	88%				727	654	88%
Jefferson	Middle	7-8	90%	615	942	848	73%				942	848	73%
Johnson	Middle	7-8	90%	785	1,111	1,000	79%	1	22	20	1,133	1,020	77%
Kennedy	Middle	7-8	90%	608	749	674	90%	7	161	145	910	819	74%
Madison	Middle	7-8	90%	438	825	743	59%				825	743	59%
McNair	Middle	7-8	90%	472	679	611	77%				679	611	77%
Southwest	Middle	7-8	90%	882	1,308	1,177	75%				1,308	1,177	75%
Stone	Middle	7-8	90%	836	1,126	1,013	83%				1,126	1,013	83%
Cocoa	Jr / Sr High	PK, 7-12	90%	1,498	1,730	1,557	96%	10	250	225	1,980	1,782	84%
Cocoa Beach	Jr / Sr High	7-12	90%	1,102	1,253	1,128	98%	15	375	338	1,628	1,466	75%
Edgewood	Jr / Sr High	7-12	90%	949	1,100	990	96%	6	91	82	1,191	1,072	89%
Space Coast	Jr / Sr High	7-12	90%	1,474	1,975	1,778	83%	2	38	34	2,013	1,812	81%
West Shore	Jr / Sr High	7-12	90%	957	1,232	1,109	86%	7	172	155	1,404	1,264	76%

2015-16 School Year

School Capacity and Student Enrollment Analysis by Type



School Information				Student	Permanent			2015-2016 Relocatables			Total		
School	Type	Grades	Utilization Factor (Note 1)	Membership (Note 2)	2015-16 Student Stations (Note 3)	Factored Capacity (Note 4)	Capacity In Use (Note 5)	Classroom Units (Note 6)	Student Stations (Note 7)	Factored Capacity (Note 8)	Total Student Stations (Note 9)	Total Factored Capacity (Note 9)	Total Capacity In Use (Note 9)
Astronaut	High	9-12	95%	1,108	1,522	1,446	77%				1,522	1,446	77%
Bayside	High	9-12	95%	1,687	2,353	2,235	76%				2,353	2,235	76%
Eau Gallie	High	PK, 9-12	95%	1,713	2,050	1,948	88%	10	250	238	2,300	2,186	78%
Heritage	High	9-12	95%	1,851	2,436	2,314	80%				2,436	2,314	80%
Melbourne	High	9-12	95%	2,227	2,439	2,317	96%				2,439	2,317	96%
Merritt Island	High	PK, 9-12	95%	1,545	1,965	1,867	83%	2	50	48	2,015	1,915	81%
Palm Bay	High	PK, 9-12	95%	1,570	2,576	2,447	64%	7	175	166	2,751	2,613	60%
Rockledge	High	9-12	95%	1,447	1,691	1,606	90%	3	75	71	1,766	1,677	86%
Satellite	High	PK, 9-12	95%	1,345	1,580	1,501	90%	1	25	24	1,605	1,525	88%
Titusville	High	9-12	95%	1,393	1,970	1,872	74%				1,970	1,872	74%
Viera	High	PK, 9-12	95%	2,002	2,246	2,134	94%	6	150	143	2,396	2,277	88%

School District Group Totals	Elementary	35,249	39,527	39,527	89%	150	3,124	3,124	42,651	42,651	83%
	Middle	7,549	10,961	9,865	77%	8	183	165	11,144	10,030	75%
	Jr/Sr High	5,980	7,290	6,562	91%	40	926	834	8,216	7,396	81%
	High	17,888	22,828	21,687	83%	29	725	690	23,553	22,377	80%

School District Grand Totals	66,666	80,606	77,641	86%	227	4,958	4,813	85,564	82,454	81%
------------------------------	--------	--------	--------	-----	-----	-------	-------	--------	--------	-----

Notes:

- Note 1: Utilization Factors are established by the Florida Department of Education's (FDOE) State Requirements for Educational Facilities (SREF).
- Note 2: Student Membership based on Fall FTE Count (10/16/15)
- Note 3: Permanent Student Stations are based on the information contained in the FDOE Florida Inventory of School Houses (FISH) database on 12/01/15
- Note 4: Factored Capacity is calculated by multiplying Satisfactory Student Stations by the Utilization Factor. Total Factored Capacity is the addition of the Permanent Factored Capacity plus the Relocatable Factored Capacity.
- Note 5: Capacity in Use is calculated by dividing the Projected Student Membership by the Permanent Factored Capacity.
- Note 6: Relocatable Classroom Units are based on the information contained in the FDOE Florida Inventory of School Houses (FISH) database on 12/01/15
- Note 7: Relocatable Student Stations are based on the information contained in the FDOE Florida Inventory of School Houses (FISH) database on 12/01/15
- Note 8: Relocatable Factored Capacity is calculated by multiplying Satisfactory Relocatable Student Stations by the Utilization Factor.
- Note 9: Totals are calculated by adding Permanent and Relocatable data.

Section 4

Capacity / Enrollment Projections 2016 - 2017

- A. By Area
- B. By School Type



2016-17 School Year



School Capacity and Enrollment Projections by School Area

School Information				Student	Permanent			2016 - 2017 Relocatables			2016-2017 Totals (Note 9)		
School	Type	Grades	Utilization Factor (Note 1)	2016 - 2017 Projected Membership (Note 2)	2015-16 Student Stations (Note 3)	Factored Capacity (Note 4)	Capacity In Use (Note 5)	Classroom Units (Note 6)	Student Stations (Note 7)	Factored Capacity (Note 8)	Total Student Stations	Total Factored Capacity	Total Capacity In Use
South Area													
Allen	Elementary	PK-6	100%	624	663	663	94%	5	88	88	751	751	83%
Columbia	Elementary	PK-6	100%	556	685	685	81%	3	66	66	751	751	74%
Discovery	Elementary	PK-6	100%	626	826	826	76%	7	154	154	980	980	64%
Gemini	Elementary	K-6	100%	456	667	667	68%	2	44	44	711	711	64%
Harbor City	Elementary	PK-6	100%	432	453	453	95%	8	176	176	629	629	69%
Indialantic	Elementary	K-6	100%	746	754	754	99%	2	44	44	798	798	94%
Jupiter	Elementary	PK-6	100%	831	780	780	107%	7	150	150	930	930	89%
Lockmar	Elementary	PK-6	100%	727	892	892	82%				892	892	82%
McAuliffe	Elementary	PK-6	100%	768	754	754	102%	8	164	164	918	918	84%
Meadowlane Intermediate	Elementary	3-6	100%	1,040	894	894	116%	11	220	220	1,114	1,114	93%
Meadowlane Primary	Elementary	K-6	100%	730	824	824	89%				824	824	89%
Palm Bay	Elementary	PK-6	100%	836	829	829	101%	8	176	176	1,005	1,005	83%
Port Malabar	Elementary	PK-6	100%	775	768	768	101%	4	84	84	852	852	91%
Riviera	Elementary	PK-6	100%	738	689	689	107%	4	88	88	777	777	95%
Sunrise	Elementary	PK-6	100%	851	895	895	95%				895	895	95%
Turner	Elementary	PK-6	100%	707	830	830	85%	2	44	44	874	874	81%
University Park	Elementary	PK-6	100%	638	679	679	94%	6	132	132	811	811	79%
West Melbourne	Elementary	K-6	100%	552	618	618	89%				618	618	89%
Westside	Elementary	K-6	100%	691	835	835	83%	1	22	22	857	857	81%
Central	Middle	7-8	90%	1,115	1,694	1,525	73%				1,694	1,525	73%
Hoover	Middle	7-8	90%	496	732	659	75%				732	659	75%
Southwest	Middle	7-8	90%	869	1,308	1,177	74%				1,308	1,177	74%
Stone	Middle	7-8	90%	854	1,126	1,013	84%				1,126	1,013	84%
West Shore	Jr / Sr High	7-12	90%	956	1,232	1,109	86%	7	172	155	1,404	1,264	76%
Bayside	High	9-12	95%	1,646	2,353	2,235	74%				2,353	2,235	74%
Heritage	High	9-12	95%	1,846	2,436	2,314	80%				2,436	2,314	80%
Melbourne	High	9-12	95%	2,290	2,439	2,317	99%				2,439	2,317	99%
Palm Bay	High	PK, 9-12	95%	1,558	2,576	2,447	64%	7	175	166	2,751	2,613	60%
Totals: South Area				24,954	30,231	29,131	86%	92	1,999	1,973	32,230	31,104	80%
South Area Group Totals	Elementary			13,324	14,335	14,335	93%	78	1,652	1,652	15,987	15,987	83%
	Middle			3,334	4,860	4,374	76%	-	-	-	4,860	4,374	76%
	Jr/Sr High			956	1,232	1,109	86%	7	172	155	1,404	1,264	76%
	High			7,340	9,804	9,313	79%	7	175	166	9,979	9,479	77%

2016-17 School Year



School Capacity and Enrollment Projections by School Area

School Information				Student	Permanent			2016 - 2017 Relocatables			2016-2017 Totals (Note 9)		
School	Type	Grades	Utilization Factor (Note 1)	2016 - 2017 Projected Membership (Note 2)	2015-16 Student Stations (Note 3)	Factored Capacity (Note 4)	Capacity In Use (Note 5)	Classroom Units (Note 6)	Student Stations (Note 7)	Factored Capacity (Note 8)	Total Student Stations	Total Factored Capacity	Total Capacity In Use
Central Area													
Andersen	Elementary	K-6	100%	700	840	840	83%	2	44	44	884	884	79%
Cambridge	Elementary	PK-6	100%	687	649	649	106%	6	116	116	765	765	90%
Creel	Elementary	PK-6	100%	960	1,088	1,088	88%	3	66	66	1,154	1,154	83%
Croton	Elementary	PK-6	100%	657	707	707	93%	4	88	88	795	795	83%
Endeavour	Elementary	PK-6	100%	852	852	852	100%	7	138	138	990	990	86%
Fairglen	Elementary	PK-6	100%	701	753	753	93%				753	753	93%
Golfview	Elementary	PK-6	100%	644	689	689	94%	4	88	88	777	777	83%
Holland	Elementary	PK-6	100%	443	605	605	73%				605	605	73%
Longleaf	Elementary	PK-6	100%	626	790	790	79%				790	790	79%
Manatee	Elementary	K-6	100%	845	866	866	98%	5	88	88	954	954	89%
Ocean Breeze	Elementary	PK-6	100%	515	498	498	103%	8	156	156	654	654	79%
Quest	Elementary	PK-6	100%	852	910	910	94%	3	40	40	950	950	90%
Sabal	Elementary	PK-6	100%	573	679	679	84%	5	106	106	785	785	73%
Saturn	Elementary	PK-6	100%	779	830	830	94%	6	128	128	958	958	81%
Sea Park	Elementary	PK-6	100%	325	439	439	74%				439	439	74%
Sherwood	Elementary	PK-6	100%	505	609	609	83%				609	609	83%
Suntree	Elementary	K-6	100%	628	689	689	91%	3	66	66	755	755	83%
Surfside	Elementary	K-6	100%	464	439	439	106%	4	84	84	523	523	89%
Williams	Elementary	PK-6	100%	541	627	627	86%	4	88	88	715	715	76%
DeLaura	Middle	7-8	90%	679	1,068	961	71%				1,068	961	71%
Johnson	Middle	7-8	90%	776	1,111	1,000	78%	1	22	20	1,133	1,020	76%
Kennedy	Middle	7-8	90%	601	749	674	89%	7	161	145	910	819	73%
McNair	Middle	7-8	90%	502	679	611	82%				679	611	82%
Cocoa	Jr / Sr High	PK, 7-12	90%	1,601	1,730	1,557	103%	10	250	225	1,980	1,782	90%
Eau Gallie	High	PK, 9-12	95%	1,710	2,050	1,948	88%	10	250	238	2,300	2,186	78%
Rockledge	High	9-12	95%	1,450	1,691	1,606	90%	3	75	71	1,766	1,677	87%
Satellite	High	PK, 9-12	95%	1,351	1,580	1,501	90%	1	25	24	1,605	1,525	89%
Viera	High	PK, 9-12	95%	2,000	2,246	2,134	94%	5	125	119	2,371	2,253	89%
Totals: Central Area				22,967	26,463	25,551	90%	101	2,204	2,138	28,667	27,689	83%
Central Area Group Totals		Elementary		12,297	13,559	13,559	91%	64	1,296	1,296	14,855	14,855	83%
		Middle		2,558	3,607	3,246	79%	8	183	165	3,790	3,411	75%
		Jr/Sr High		1,601	1,730	1,557	103%	10	250	225	1,980	1,782	90%
		High		6,511	7,567	7,189	91%	19	475	452	8,042	7,641	85%

2016-17 School Year



School Capacity and Enrollment Projections by School Area

School Information				Student	Permanent			2016 - 2017 Relocatables			2016-2017 Totals (Note 9)		
School	Type	Grades	Utilization Factor (Note 1)	2016 - 2017 Projected Membership (Note 2)	2015-16 Student Stations (Note 3)	Factored Capacity (Note 4)	Capacity In Use (Note 5)	Class-room Units (Note 6)	Student Stations (Note 7)	Factored Capacity (Note 8)	Total Student Stations	Total Factored Capacity	Total Capacity In Use
North Area													
Apollo	Elementary	K-6	100%	826	902	902	92%				902	902	92%
Atlantis	Elementary	PK-6	100%	586	703	703	83%				703	703	83%
Audubon	Elementary	PK-6	100%	662	761	761	87%				761	761	87%
Cape View	Elementary	PK-6	100%	421	548	548	77%				548	548	77%
Carroll	Elementary	K-6	100%	634	751	751	84%				751	751	84%
Challenger 7	Elementary	PK-6	100%	507	551	551	92%	1	22	22	573	573	89%
Coquina	Elementary	K-6	100%	550	627	627	88%	3	66	66	693	693	79%
Enterprise	Elementary	K-6	100%	529	707	707	75%	1	22	22	729	729	73%
Freedom 7	Elementary	K-6	100%	414	453	453	91%	1	22	22	475	475	87%
Imperial Estates	Elementary	K-6	100%	650	729	729	89%				729	729	89%
Mila	Elementary	PK-6	100%	492	707	707	70%				707	707	70%
Mims	Elementary	PK-6	100%	538	725	725	74%				725	725	74%
Oak Park	Elementary	PK-6	100%	874	888	888	98%	2	44	44	932	932	94%
Pinewood (Note 10)	Elementary	PK-6	100%	466	503	503	93%	2	44	44	547	547	85%
Roosevelt	Elementary	K-6	100%	382	599	599	64%				599	599	64%
Stevenson	Elementary	K-6	100%	490	569	569	86%				569	569	86%
Tropical	Elementary	K-6	100%	760	910	910	84%				910	910	84%
Jackson	Middle	7-8	90%	575	727	654	88%				727	654	88%
Jefferson	Middle	7-8	90%	610	942	848	72%				942	848	72%
Madison	Middle	7-8	90%	464	825	743	62%				825	743	62%
Cocoa Beach	Jr / Sr High	7-12	90%	1,085	1,253	1,128	96%	15	375	338	1,628	1,466	74%
Edgewood	Jr / Sr High	7-12	90%	950	1,100	990	96%	6	91	82	1,191	1,072	89%
Space Coast	Jr / Sr High	7-12	90%	1,531	1,975	1,778	86%	2	38	34	2,013	1,812	85%
Astronaut	High	9-12	95%	1,077	1,522	1,446	75%				1,522	1,446	75%
Merritt Island	High	PK, 9-12	95%	1,575	1,965	1,867	84%	2	50	48	2,015	1,915	82%
Titusville	High	9-12	95%	1,413	1,970	1,872	76%				1,970	1,872	76%
Totals: North Area				19,061	23,912	22,959	83%	35	774	722	24,686	23,681	81%

North Area Group Totals	Elementary	9,781	11,633	11,633	84%	10	220	220	11,853	11,853	83%
	Middle	1,649	2,494	2,245	74%	-	-	-	2,494	2,245	74%
	Jr/Sr High	3,566	4,328	3,896	92%	23	504	454	4,832	4,350	82%
	High	4,065	5,457	5,185	78%	2	50	48	5,507	5,233	78%

2016-17 School Year



School Capacity and Enrollment Projections by School Area

School Information				Student	Permanent			2016 - 2017 Relocatables			2016-2017 Totals (Note 9)		
School	Type	Grades	Utilization Factor (Note 1)	2016 - 2017 Projected Membership (Note 2)	2015-16 Student Stations (Note 3)	Factored Capacity (Note 4)	Capacity In Use (Note 5)	Class-room Units (Note 6)	Student Stations (Note 7)	Factored Capacity (Note 8)	Total Student Stations	Total Factored Capacity	Total Capacity In Use

School District Group Totals	Elementary	35,402	39,527	39,527	90%	152	3,168	3,168	42,695	42,695	83%
	Middle	7,541	10,961	9,865	76%	8	183	165	11,144	10,030	75%
	Jr/Sr High	6,123	7,290	6,562	93%	40	926	834	8,216	7,396	83%
	High	17,916	22,828	21,687	83%	28	700	666	23,528	22,353	80%

School District Grand Totals				66,982	80,606	77,641	86%	228	4,977	4,833	85,583	82,474	81%
-------------------------------------	--	--	--	---------------	---------------	---------------	------------	------------	--------------	--------------	---------------	---------------	------------

Notes:

- Note 1: Utilization Factors are established by the Florida Department of Education's (FDOE) State Requirements for Educational Facilities (SREF).
- Note 2: Projected Student Membership figures based on Finance 2016-17 Budget Projections combined with Growth Management Projections for 2017-18 to 2020-21 (updated 11/23/2015).
- Note 3: Permanent Student Stations are based on the information contained in the FDOE Florida Inventory of School Houses (FISH) database on 12/01/15
- Note 4: Factored Capacity is calculated by multiplying Satisfactory Student Stations by the Utilization Factor. Total Factored Capacity is the addition of the Permanent Factored Capacity plus the Relocatable Factored Capacity.
- Note 5: Capacity in Use is calculated by dividing the Projected Student Membership by the Permanent Factored Capacity.
- Note 6: Relocatable Classroom Units are based on the information contained in the FDOE Florida Inventory of School Houses (FISH) database on 12/01/15 plus the projected relocatable classroom changes for School Year 2016-17 (shown in red).
- Note 7: Relocatable Student Stations are based on the information contained in the FDOE Florida Inventory of School Houses (FISH) database on 12/01/15 plus the projected relocatable classroom changes for School Year 2016-17 (shown in red).
- Note 8: Relocatable Factored Capacity is calculated by multiplying Satisfactory Relocatable Student Stations by the Utilization Factor.
- Note 9: Totals are calculated by adding Permanent and Relocatable data.
- Note 10: Pinewood 2016-17 student enrollment projections were reduced by 37 students due to a program change documented on 4/12/2016.

2016-17 School Year



School Capacity and Enrollment Projections by School Type

School Information				Student	Permanent			2016 - 2017 Relocatables			2016-2017 Totals (Note 9)		
School	Type	Grades	Utilization Factor (Note 1)	2016 - 2017 Projected Membership (Note 2)	2015-16 Student Stations (Note 3)	Factored Capacity (Note 4)	Capacity In Use (Note 5)	Class-room Units (Note 6)	Student Stations (Note 7)	Factored Capacity (Note 8)	Total Student Stations	Total Factored Capacity	Total Capacity In Use
Allen	Elementary	PK-6	100%	624	663	663	94%	5	88	88	751	751	83%
Andersen	Elementary	K-6	100%	700	840	840	83%	2	44	44	884	884	79%
Apollo	Elementary	K-6	100%	826	902	902	92%				902	902	92%
Atlantis	Elementary	PK-6	100%	586	703	703	83%				703	703	83%
Audubon	Elementary	PK-6	100%	662	761	761	87%				761	761	87%
Cambridge	Elementary	PK-6	100%	687	649	649	106%	6	116	116	765	765	90%
Cape View	Elementary	PK-6	100%	421	548	548	77%				548	548	77%
Carroll	Elementary	K-6	100%	634	751	751	84%				751	751	84%
Challenger 7	Elementary	PK-6	100%	507	551	551	92%	1	22	22	573	573	89%
Columbia	Elementary	PK-6	100%	556	685	685	81%	3	66	66	751	751	74%
Coquina	Elementary	K-6	100%	550	627	627	88%	3	66	66	693	693	79%
Creel	Elementary	PK-6	100%	960	1,088	1,088	88%	3	66	66	1,154	1,154	83%
Croton	Elementary	PK-6	100%	657	707	707	93%	4	88	88	795	795	83%
Discovery	Elementary	PK-6	100%	626	826	826	76%	7	154	154	980	980	64%
Endeavour	Elementary	PK-6	100%	852	852	852	100%	7	138	138	990	990	86%
Enterprise	Elementary	K-6	100%	529	707	707	75%	1	22	22	729	729	73%
Fairglen	Elementary	PK-6	100%	701	753	753	93%				753	753	93%
Freedom 7	Elementary	K-6	100%	414	453	453	91%	1	22	22	475	475	87%
Gemini	Elementary	K-6	100%	456	667	667	68%	2	44	44	711	711	64%
Golfview	Elementary	PK-6	100%	644	689	689	94%	4	88	88	777	777	83%
Harbor City	Elementary	PK-6	100%	432	453	453	95%	8	176	176	629	629	69%
Holland	Elementary	PK-6	100%	443	605	605	73%				605	605	73%
Imperial Estates	Elementary	K-6	100%	650	729	729	89%				729	729	89%
Indialantic	Elementary	K-6	100%	746	754	754	99%	2	44	44	798	798	94%
Jupiter	Elementary	PK-6	100%	831	780	780	107%	7	150	150	930	930	89%
Lockmar	Elementary	PK-6	100%	727	892	892	82%				892	892	82%
Longleaf	Elementary	PK-6	100%	626	790	790	79%				790	790	79%
Manatee	Elementary	K-6	100%	845	866	866	98%	5	88	88	954	954	89%
McAuliffe	Elementary	PK-6	100%	768	754	754	102%	8	164	164	918	918	84%
Meadowlane Intermediate	Elementary	3-6	100%	1,040	894	894	116%	11	220	220	1,114	1,114	93%
Meadowlane Primary	Elementary	K-6	100%	730	824	824	89%				824	824	89%
Mila	Elementary	PK-6	100%	492	707	707	70%				707	707	70%
Mims	Elementary	PK-6	100%	538	725	725	74%				725	725	74%
Oak Park	Elementary	PK-6	100%	874	888	888	98%	2	44	44	932	932	94%
Ocean Breeze	Elementary	PK-6	100%	515	498	498	103%	8	156	156	654	654	79%
Palm Bay	Elementary	PK-6	100%	836	829	829	101%	8	176	176	1,005	1,005	83%
Pinewood (Note 10)	Elementary	PK-6	100%	466	503	503	93%	2	44	44	547	547	85%
Port Malabar	Elementary	PK-6	100%	775	768	768	101%	4	84	84	852	852	91%
Quest	Elementary	PK-6	100%	852	910	910	94%	3	40	40	950	950	90%

2016-17 School Year



School Capacity and Enrollment Projections by School Type

School Information				Student	Permanent			2016 - 2017 Relocatables			2016-2017 Totals (Note 9)		
School	Type	Grades	Utilization Factor (Note 1)	2016 - 2017 Projected Membership (Note 2)	2015-16 Student Stations (Note 3)	Factored Capacity (Note 4)	Capacity In Use (Note 5)	Class-room Units (Note 6)	Student Stations (Note 7)	Factored Capacity (Note 8)	Total Student Stations	Total Factored Capacity	Total Capacity In Use
Riviera	Elementary	PK-6	100%	738	689	689	107%	4	88	88	777	777	95%
Roosevelt	Elementary	K-6	100%	382	599	599	64%				599	599	64%
Sabal	Elementary	PK-6	100%	573	679	679	84%	5	106	106	785	785	73%
Saturn	Elementary	PK-6	100%	779	830	830	94%	6	128	128	958	958	81%
Sea Park	Elementary	PK-6	100%	325	439	439	74%				439	439	74%
Sherwood	Elementary	PK-6	100%	505	609	609	83%				609	609	83%
Stevenson	Elementary	K-6	100%	490	569	569	86%				569	569	86%
Sunrise	Elementary	PK-6	100%	851	895	895	95%				895	895	95%
Suntree	Elementary	K-6	100%	628	689	689	91%	3	66	66	755	755	83%
Surfside	Elementary	K-6	100%	464	439	439	106%	4	84	84	523	523	89%
Tropical	Elementary	K-6	100%	760	910	910	84%				910	910	84%
Turner	Elementary	PK-6	100%	707	830	830	85%	2	44	44	874	874	81%
University Park	Elementary	PK-6	100%	638	679	679	94%	6	132	132	811	811	79%
West Melbourne	Elementary	K-6	100%	552	618	618	89%				618	618	89%
Westside	Elementary	K-6	100%	691	835	835	83%	1	22	22	857	857	81%
Williams	Elementary	PK-6	100%	541	627	627	86%	4	88	88	715	715	76%
Central	Middle	7-8	90%	1,115	1,694	1,525	73%				1,694	1,525	73%
DeLaura	Middle	7-8	90%	679	1,068	961	71%				1,068	961	71%
Hoover	Middle	7-8	90%	496	732	659	75%				732	659	75%
Jackson	Middle	7-8	90%	575	727	654	88%				727	654	88%
Jefferson	Middle	7-8	90%	610	942	848	72%				942	848	72%
Johnson	Middle	7-8	90%	776	1,111	1,000	78%	1	22	20	1,133	1,020	76%
Kennedy	Middle	7-8	90%	601	749	674	89%	7	161	145	910	819	73%
Madison	Middle	7-8	90%	464	825	743	62%				825	743	62%
McNair	Middle	7-8	90%	502	679	611	82%				679	611	82%
Southwest	Middle	7-8	90%	869	1,308	1,177	74%				1,308	1,177	74%
Stone	Middle	7-8	90%	854	1,126	1,013	84%				1,126	1,013	84%
Cocoa	Jr / Sr High	PK, 7-12	90%	1,601	1,730	1,557	103%	10	250	225	1,980	1,782	90%
Cocoa Beach	Jr / Sr High	7-12	90%	1,085	1,253	1,128	96%	15	375	338	1,628	1,466	74%
Edgewood	Jr / Sr High	7-12	90%	950	1,100	990	96%	6	91	82	1,191	1,072	89%
Space Coast	Jr / Sr High	7-12	90%	1,531	1,975	1,778	86%	2	38	34	2,013	1,812	85%
West Shore	Jr / Sr High	7-12	90%	956	1,232	1,109	86%	7	172	155	1,404	1,264	76%

2016-17 School Year



School Capacity and Enrollment Projections by School Type

School Information				Student	Permanent			2016 - 2017 Relocatables			2016-2017 Totals (Note 9)		
School	Type	Grades	Utilization Factor (Note 1)	2016 - 2017 Projected Membership (Note 2)	2015-16 Student Stations (Note 3)	Factored Capacity (Note 4)	Capacity In Use (Note 5)	Class-room Units (Note 6)	Student Stations (Note 7)	Factored Capacity (Note 8)	Total Student Stations	Total Factored Capacity	Total Capacity In Use
Astronaut	High	9-12	95%	1,077	1,522	1,446	75%				1,522	1,446	75%
Bayside	High	9-12	95%	1,646	2,353	2,235	74%				2,353	2,235	74%
Eau Gallie	High	PK, 9-12	95%	1,710	2,050	1,948	88%	10	250	238	2,300	2,186	78%
Heritage	High	9-12	95%	1,846	2,436	2,314	80%				2,436	2,314	80%
Melbourne	High	9-12	95%	2,290	2,439	2,317	99%				2,439	2,317	99%
Merritt Island	High	PK, 9-12	95%	1,575	1,965	1,867	84%	2	50	48	2,015	1,915	82%
Palm Bay	High	PK, 9-12	95%	1,558	2,576	2,447	64%	7	175	166	2,751	2,613	60%
Rockledge	High	9-12	95%	1,450	1,691	1,606	90%	3	75	71	1,766	1,677	87%
Satellite	High	PK, 9-12	95%	1,351	1,580	1,501	90%	1	25	24	1,605	1,525	89%
Titusville	High	9-12	95%	1,413	1,970	1,872	76%				1,970	1,872	76%
Viera	High	PK, 9-12	95%	2,000	2,246	2,134	94%	5	125	119	2,371	2,253	89%

School District Group Totals	Elementary	35,402	39,527	39,527	90%	152	3,168	3,168	42,695	42,695	83%
	Middle	7,541	10,961	9,865	76%	8	183	165	11,144	10,030	75%
	Jr/Sr High	6,123	7,290	6,562	93%	40	926	834	8,216	7,396	83%
	High	17,916	22,828	21,687	83%	28	700	666	23,528	22,353	80%

School District Grand Totals	66,982	80,606	77,641	86%	228	4,977	4,833	85,583	82,474	81%
------------------------------	--------	--------	--------	-----	-----	-------	-------	--------	--------	-----

Notes:

- Note 1: Utilization Factors are established by the Florida Department of Education's (FDOE) State Requirements for Educational Facilities (SREF).
- Note 2: Projected Student Membership figures based on Finance 2016-17 Budget Projections combined with Growth Management Projections for 2017-18 to 2020-21 (updated 11/23/2015).
- Note 3: Permanent Student Stations are based on the information contained in the FDOE Florida Inventory of School Houses (FISH) database on 12/01/15
- Note 4: Factored Capacity is calculated by multiplying Satisfactory Student Stations by the Utilization Factor. Total Factored Capacity is the addition of the Permanent Factored Capacity plus the Relocatable Factored Capacity.
- Note 5: Capacity in Use is calculated by dividing the Projected Student Membership by the Permanent Factored Capacity.
- Note 6: Relocatable Classroom Units are based on the information contained in the FDOE Florida Inventory of School Houses (FISH) database on 12/01/15 plus the projected relocatable classroom changes for School Year 2016-17 (shown in red).
- Note 7: Relocatable Student Stations are based on the information contained in the FDOE Florida Inventory of School Houses (FISH) database on 12/01/15 plus the projected relocatable classroom changes for School Year 2016-17 (shown in red).
- Note 8: Relocatable Factored Capacity is calculated by multiplying Satisfactory Relocatable Student Stations by the Utilization Factor.
- Note 9: Totals are calculated by adding Permanent and Relocatable data.
- Note 10: Pinewood 2016-17 student enrollment projections were reduced by 37 students due to a program change documented on 4/12/2016.

Section 5

Capacity / Enrollment Projections 2016-17 to 2020-21

- A. By Area and Permanent Capacity Utilization
- B. By Area and Total Capacity Utilization
- C. By School Type and Permanent Capacity Utilization
- D. By School Type and Total Capacity Utilization



School Year 2016-17 -- 2020-21



School Permanent Capacity and Student Membership Projections by Area

School Information and Capacity						Projected Student Membership						Projected Capacity in Use					
School Information				Permanent Only		Current Year	(Note 4)					Current Year	(Note 5)				
School	Type	Grades	Utilization Factor (Note 1)	2015-2016 Student Stations (Note 2)	2015-2016 Factored Capacity (Note 3)	2015-16	2016-17	2017-18	2018-19	2019-20	2020-21	2015-16	2016-17	2017-18	2018-19	2019-20	2020-21
South Area																	
Allen	Elementary	PK-6	100%	663	663	605	624	610	611	612	595	91%	94%	92%	92%	92%	90%
Columbia	Elementary	PK-6	100%	685	685	577	556	550	544	533	511	84%	81%	80%	79%	78%	75%
Discovery	Elementary	PK-6	100%	826	826	634	626	615	594	568	559	77%	76%	75%	72%	69%	68%
Gemini	Elementary	K-6	100%	667	667	483	456	429	431	427	422	72%	68%	64%	65%	64%	63%
Harbor City	Elementary	PK-6	100%	453	453	434	432	421	418	411	389	96%	95%	93%	92%	91%	86%
Indialantic	Elementary	K-6	100%	754	754	753	746	732	733	712	715	100%	99%	97%	97%	94%	95%
Jupiter	Elementary	PK-6	100%	780	780	810	831	846	877	866	872	104%	107%	109%	112%	111%	112%
Lockmar	Elementary	PK-6	100%	892	892	721	727	709	690	664	638	81%	82%	80%	77%	74%	72%
McAuliffe	Elementary	PK-6	100%	754	754	744	768	774	787	775	765	99%	102%	103%	104%	103%	102%
Meadowlane Intermediate	Elementary	3-6	100%	894	894	1,003	1,040	1,035	1,041	977	931	112%	116%	116%	116%	109%	104%
Meadowlane Primary	Elementary	K-6	100%	824	824	740	730	723	703	695	692	90%	89%	88%	85%	84%	84%
Palm Bay	Elementary	PK-6	100%	829	829	815	836	808	803	777	724	98%	101%	98%	97%	94%	87%
Port Malabar	Elementary	PK-6	100%	768	768	761	775	765	767	747	715	99%	101%	100%	100%	97%	93%
Riviera	Elementary	PK-6	100%	689	689	690	738	791	833	829	794	100%	107%	115%	121%	120%	115%
Sunrise	Elementary	PK-6	100%	895	895	844	851	876	872	855	858	94%	95%	98%	97%	96%	96%
Turner	Elementary	PK-6	100%	830	830	689	707	691	683	657	608	83%	85%	83%	82%	79%	73%
University Park	Elementary	PK-6	100%	679	679	617	638	699	777	791	790	91%	94%	103%	114%	117%	116%
West Melbourne	Elementary	K-6	100%	618	618	551	552	552	552	552	552	89%	89%	89%	89%	89%	89%
Westside	Elementary	K-6	100%	835	835	700	691	647	609	543	485	84%	83%	78%	73%	65%	58%
Central	Middle	7-8	90%	1,694	1,525	1,142	1,115	1,165	1,184	1,266	1,337	75%	73%	76%	78%	83%	88%
Hoover	Middle	7-8	90%	732	659	507	496	564	539	540	559	77%	75%	86%	82%	82%	85%
Southwest	Middle	7-8	90%	1,308	1,177	882	869	871	835	944	1,049	75%	74%	74%	71%	80%	89%
Stone	Middle	7-8	90%	1,126	1,013	836	854	919	979	1,032	1,211	83%	84%	91%	97%	102%	120%
West Shore	Jr / Sr High	7-12	90%	1,232	1,109	957	956	956	956	956	956	86%	86%	86%	86%	86%	86%
Bayside	High	9-12	95%	2,353	2,235	1,687	1,646	1,611	1,649	1,631	1,671	76%	74%	72%	74%	73%	75%
Heritage	High	9-12	95%	2,436	2,314	1,851	1,846	1,822	1,819	1,804	1,830	80%	80%	79%	79%	78%	79%
Melbourne	High	9-12	95%	2,439	2,317	2,227	2,290	2,220	2,263	2,335	2,352	96%	99%	96%	98%	101%	102%
Palm Bay	High	PK, 9-12	95%	2,576	2,447	1,570	1,558	1,683	1,727	1,836	1,865	64%	64%	69%	71%	75%	76%
Totals: South Area				30,231	29,131	24,830	24,954	25,084	25,276	25,335	25,445	85%	86%	86%	87%	87%	87%
South Area Group Totals	Elementary			14,335	14,335	13,171	13,324	13,273	13,325	12,991	12,615	92%	93%	93%	93%	91%	88%
	Middle			4,860	4,374	3,367	3,334	3,519	3,537	3,782	4,156	77%	76%	81%	81%	87%	95%
	Jr / Sr High			1,232	1,109	957	956	956	956	956	956	86%	86%	86%	86%	86%	86%
	High			9,804	9,313	7,335	7,340	7,336	7,458	7,606	7,718	79%	79%	79%	80%	82%	83%

School Year 2016-17 -- 2020-21



School Permanent Capacity and Student Membership Projections by Area

School Information and Capacity						Projected Student Membership						Projected Capacity in Use					
School Information				Permanent Only		Current Year	(Note 4)					Current Year	(Note 5)				
School	Type	Grades	Utilization Factor (Note 1)	2015-2016 Student Stations (Note 2)	2015-2016 Factored Capacity (Note 3)	2015-16	2016-17	2017-18	2018-19	2019-20	2020-21	2015-16	2016-17	2017-18	2018-19	2019-20	2020-21
Central Area																	
Andersen	Elementary	K-6	100%	840	840	705	700	711	731	741	763	84%	83%	85%	87%	88%	91%
Cambridge	Elementary	PK-6	100%	649	649	666	687	678	673	664	642	103%	106%	105%	104%	102%	99%
Creel	Elementary	PK-6	100%	1,088	1,088	931	960	977	1,012	996	996	86%	88%	90%	93%	92%	92%
Croton	Elementary	PK-6	100%	707	707	665	657	669	707	709	721	94%	93%	95%	100%	100%	102%
Endeavour	Elementary	PK-6	100%	852	852	836	852	885	892	880	858	98%	100%	104%	105%	103%	101%
Fairglen	Elementary	PK-6	100%	753	753	691	701	670	661	653	654	92%	93%	89%	88%	87%	87%
Golfview	Elementary	PK-6	100%	689	689	647	644	642	642	655	655	94%	94%	93%	93%	95%	95%
Holland	Elementary	PK-6	100%	605	605	432	443	443	431	421	406	71%	73%	73%	71%	70%	67%
Longleaf	Elementary	PK-6	100%	790	790	631	626	616	633	612	594	80%	79%	78%	80%	78%	75%
Manatee	Elementary	K-6	100%	866	866	846	845	823	833	866	895	98%	98%	95%	96%	100%	103%
Ocean Breeze	Elementary	PK-6	100%	498	498	532	515	544	566	563	566	107%	103%	109%	114%	113%	114%
Quest	Elementary	PK-6	100%	910	910	848	852	954	1,121	1,264	1,339	93%	94%	105%	123%	139%	147%
Sabal	Elementary	PK-6	100%	679	679	565	573	584	606	605	613	83%	84%	86%	89%	89%	90%
Saturn	Elementary	PK-6	100%	830	830	785	779	774	762	776	779	95%	94%	93%	92%	94%	94%
Sea Park	Elementary	PK-6	100%	439	439	330	325	333	333	329	322	75%	74%	76%	76%	75%	73%
Sherwood	Elementary	PK-6	100%	609	609	518	505	521	530	538	553	85%	83%	86%	87%	88%	91%
Suntree	Elementary	K-6	100%	689	689	649	628	610	595	577	577	94%	91%	89%	86%	84%	84%
Surfside	Elementary	K-6	100%	439	439	449	464	465	467	457	464	102%	106%	106%	106%	104%	106%
Williams	Elementary	PK-6	100%	627	627	559	541	542	537	522	502	89%	86%	86%	86%	83%	80%
DeLaura	Middle	7-8	90%	1,068	961	686	679	723	767	849	850	71%	71%	75%	80%	88%	88%
Johnson	Middle	7-8	90%	1,111	1,000	785	776	827	818	847	917	79%	78%	83%	82%	85%	92%
Kennedy	Middle	7-8	90%	749	674	608	601	663	664	698	756	90%	89%	98%	99%	104%	112%
McNair	Middle	7-8	90%	679	611	472	502	511	504	521	505	77%	82%	84%	83%	85%	83%
Cocoa	Jr / Sr High	PK, 7-12	90%	1,730	1,557	1,498	1,601	1,665	1,724	1,801	1,892	96%	103%	107%	111%	116%	122%
Eau Gallie	High	PK, 9-12	95%	2,050	1,948	1,713	1,710	1,706	1,745	1,820	1,847	88%	88%	88%	90%	93%	95%
Rockledge	High	9-12	95%	1,691	1,606	1,447	1,450	1,526	1,630	1,690	1,690	90%	90%	95%	102%	105%	105%
Satellite	High	PK, 9-12	95%	1,580	1,501	1,345	1,351	1,309	1,316	1,286	1,334	90%	90%	87%	88%	86%	89%
Viera	High	PK, 9-12	95%	2,246	2,134	2,002	2,000	2,049	2,205	2,392	2,512	94%	94%	96%	103%	112%	118%
Totals: Central Area				26,463	25,551	22,841	22,967	23,420	24,105	24,732	25,202	89%	90%	92%	94%	97%	99%
Central Area Group Totals	Elementary			13,559	13,559	12,285	12,297	12,441	12,732	12,828	12,899	91%	91%	92%	94%	95%	95%
	Middle			3,607	3,246	2,551	2,558	2,724	2,753	2,915	3,028	79%	79%	84%	85%	90%	93%
	Jr / Sr High			1,730	1,557	1,498	1,601	1,665	1,724	1,801	1,892	96%	103%	107%	111%	116%	122%
	High			7,567	7,189	6,507	6,511	6,590	6,896	7,188	7,383	91%	91%	92%	96%	100%	103%

School Year 2016-17 -- 2020-21



School Permanent Capacity and Student Membership Projections by Area

School Information and Capacity						Projected Student Membership						Projected Capacity in Use						
School Information				Permanent Only		Current Year	(Note 4)					Current Year	(Note 5)					
School	Type	Grades	Utilization Factor (Note 1)	2015-2016 Student Stations (Note 2)	2015-2016 Factored Capacity (Note 3)	2015-16	2016-17	2017-18	2018-19	2019-20	2020-21	2015-16	2016-17	2017-18	2018-19	2019-20	2020-21	
North Area																		
Apollo	Elementary	K-6	100%	902	902	857	826	851	882	919	913	95%	92%	94%	98%	102%	101%	
Atlantis	Elementary	PK-6	100%	703	703	582	586	569	567	538	528	83%	83%	81%	81%	77%	75%	
Audubon	Elementary	PK-6	100%	761	761	644	662	649	634	622	598	85%	87%	85%	83%	82%	79%	
Cape View	Elementary	PK-6	100%	548	548	426	421	430	438	421	424	78%	77%	79%	80%	77%	77%	
Carroll	Elementary	K-6	100%	751	751	638	634	631	639	639	654	85%	84%	84%	85%	85%	87%	
Challenger 7	Elementary	PK-6	100%	551	551	514	507	489	482	470	463	93%	92%	89%	88%	85%	84%	
Coquina	Elementary	K-6	100%	627	627	553	550	568	607	622	637	88%	88%	91%	97%	99%	102%	
Enterprise	Elementary	K-6	100%	707	707	539	529	491	441	402	349	76%	75%	69%	62%	57%	49%	
Freedom 7	Elementary	K-6	100%	453	453	413	414	414	414	414	414	91%	91%	91%	91%	91%	91%	
Imperial Estates	Elementary	K-6	100%	729	729	650	650	679	725	736	765	89%	89%	93%	100%	101%	105%	
Mila	Elementary	PK-6	100%	707	707	495	492	509	520	505	494	70%	70%	72%	74%	71%	70%	
Mims	Elementary	PK-6	100%	725	725	517	538	542	563	537	540	71%	74%	75%	78%	74%	75%	
Oak Park	Elementary	PK-6	100%	888	888	856	874	881	866	853	856	96%	98%	99%	98%	96%	96%	
Pinewood (Note 6)	Elementary	PK-6	100%	503	503	479	466	490	523	547	565	95%	93%	97%	104%	109%	112%	
Roosevelt	Elementary	K-6	100%	599	599	375	382	405	433	438	443	63%	64%	68%	72%	73%	74%	
Stevenson	Elementary	K-6	100%	569	569	489	490	490	490	490	490	86%	86%	86%	86%	86%	86%	
Tropical	Elementary	K-6	100%	910	910	766	760	741	747	730	720	84%	84%	81%	82%	80%	79%	
Jackson	Middle	7-8	90%	727	654	578	575	574	611	654	708	88%	88%	88%	93%	100%	108%	
Jefferson	Middle	7-8	90%	942	848	615	610	610	660	700	727	73%	72%	72%	78%	83%	86%	
Madison	Middle	7-8	90%	825	743	438	464	470	501	543	529	59%	62%	63%	67%	73%	71%	
Cocoa Beach	Jr / Sr High	7-12	90%	1,253	1,128	1,102	1,085	1,085	1,085	1,085	1,085	98%	96%	96%	96%	96%	96%	
Edgewood	Jr / Sr High	7-12	90%	1,100	990	949	950	950	950	950	950	96%	96%	96%	96%	96%	96%	
Space Coast	Jr / Sr High	7-12	90%	1,975	1,778	1,474	1,531	1,504	1,450	1,466	1,483	83%	86%	85%	82%	83%	83%	
Astronaut	High	9-12	95%	1,522	1,446	1,108	1,077	1,050	1,035	1,032	1,081	77%	75%	73%	72%	71%	75%	
Merritt Island	High	PK, 9-12	95%	1,965	1,867	1,545	1,575	1,585	1,508	1,510	1,541	83%	84%	85%	81%	81%	83%	
Titusville	High	9-12	95%	1,970	1,872	1,393	1,413	1,411	1,443	1,413	1,433	74%	76%	75%	77%	76%	77%	
Totals: North Area				23,912	22,959	18,995	19,061	19,068	19,214	19,236	19,390	83%	83%	83%	84%	84%	85%	
North Area Group Totals		Elementary			11,633	11,633	9,793	9,781	9,829	9,971	9,883	9,853	84%	84%	85%	86%	85%	85%
		Middle			2,494	2,245	1,631	1,649	1,654	1,772	1,897	1,964	73%	74%	74%	79%	85%	88%
		Jr / Sr High			4,328	3,896	3,525	3,566	3,539	3,485	3,501	3,518	91%	92%	91%	90%	90%	90%
		High			5,457	5,185	4,046	4,065	4,046	3,986	3,955	4,055	78%	78%	78%	77%	76%	78%

School Year 2016-17 -- 2020-21



School Permanent Capacity and Student Membership Projections by Area

School Information and Capacity					Projected Student Membership						Projected Capacity in Use						
School Information				Permanent Only		Current Year	(Note 4)					Current Year	(Note 5)				
School	Type	Grades	Utilization Factor (Note 1)	2015-2016 Student Stations (Note 2)	2015-2016 Factored Capacity (Note 3)	2015-16	2016-17	2017-18	2018-19	2019-20	2020-21	2015-16	2016-17	2017-18	2018-19	2019-20	2020-21

School District Group Totals	Elementary		39,527	39,527	35,249	35,402	35,543	36,028	35,702	35,367	89%	90%	90%	91%	90%	90%
	Middle		10,961	9,865	7,549	7,541	7,897	8,062	8,594	9,148	77%	76%	80%	82%	87%	93%
	Jr / Sr High		7,290	6,562	5,980	6,123	6,160	6,165	6,258	6,366	91%	93%	94%	94%	95%	97%
	High		22,828	21,687	17,888	17,916	17,972	18,340	18,749	19,156	83%	83%	83%	85%	87%	88%

School District Grand Totals			80,606	77,641	66,666	66,982	67,572	68,595	69,303	70,037	86%	86%	87%	88%	89%	90%
-------------------------------------	--	--	---------------	---------------	---------------	---------------	---------------	---------------	---------------	---------------	------------	------------	------------	------------	------------	------------

Notes:

Note 1: Utilization Factors are established by the Florida Department of Education's (FDOE) State Requirements for Educational Facilities (SREF).

DOE Utilization Factors for Brevard Schools

Elementary Schools: 100%

Middle Schools: 90%

Jr/Sr High Schools: 90%

Senior High Schools: 95%

Note 2: Permanent Student Stations are based on the information contained in the FDOE Florida Inventory of School Houses (FISH) database on 12/01/15

Note 3: Factored Capacity is calculated by multiplying Satisfactory Student Stations by the Utilization Factor. Total Factored Capacity is the addition of the Permanent Factored Capacity plus the Relocatable Factored Capacity.

Note 4: Projected Student Membership figures based on Finance 2016-17 Budget Projections combined with Growth Management Projections for 2017-18 to 2020-21

Note 5: Projected Capacity in Use is calculated by dividing the Projected Student Membership by the Permanent Factored Capacity.

Note 6: Pinewood student enrollment projections were reduced by 37 students due to a program change documented on 4/12/2016.

School Year 2016-17 -- 2020-21



School Total Capacity and Student Membership Projections by Area

School Information and Capacity						Student Membership					Capacity in Use						
School Information				Total Capacity		Current Year	Projected Membership (Note 4)					Current Year	Projected Capacity in Use (Note 5)				
School	Type	Grades	Utilization Factor (Note 1)	2016-2017 Student Stations (Note 2)	2016-2017 Factored Capacity (Note 3)	2015-16 Membership	2016-17	2017-18	2018-19	2019-20	2020-21	2015-16 Total Capacity in Use	2016-17	2017-18	2018-19	2019-20	2020-21
South Area																	
Allen	Elementary	PK-6	100%	751	751	605	624	610	611	612	595	81%	83%	81%	81%	82%	79%
Columbia	Elementary	PK-6	100%	751	751	577	556	550	544	533	511	77%	74%	73%	72%	71%	68%
Discovery	Elementary	PK-6	100%	980	980	634	626	615	594	568	559	65%	64%	63%	61%	58%	57%
Gemini	Elementary	K-6	100%	711	711	483	456	429	431	427	422	68%	64%	60%	61%	60%	59%
Harbor City	Elementary	PK-6	100%	629	629	434	432	421	418	411	389	69%	69%	67%	67%	65%	62%
Indialantic	Elementary	K-6	100%	798	798	753	746	732	733	712	715	94%	94%	92%	92%	89%	90%
Jupiter	Elementary	PK-6	100%	930	930	810	831	846	877	866	872	87%	89%	91%	94%	93%	94%
Lockmar	Elementary	PK-6	100%	892	892	721	727	709	690	664	638	81%	82%	80%	77%	74%	72%
McAuliffe	Elementary	PK-6	100%	918	918	744	768	774	787	775	765	81%	84%	84%	86%	84%	83%
Meadowlane Intermediate	Elementary	3-6	100%	1,114	1,114	1,003	1,040	1,035	1,041	977	931	90%	93%	93%	93%	88%	84%
Meadowlane Primary	Elementary	K-6	100%	824	824	740	730	723	703	695	692	90%	89%	88%	85%	84%	84%
Palm Bay	Elementary	PK-6	100%	1,005	1,005	815	836	808	803	777	724	81%	83%	80%	80%	77%	72%
Port Malabar	Elementary	PK-6	100%	852	852	761	775	765	767	747	715	89%	91%	90%	90%	88%	84%
Riviera	Elementary	PK-6	100%	777	777	690	738	791	833	829	794	89%	95%	102%	107%	107%	102%
Sunrise	Elementary	PK-6	100%	895	895	844	851	876	872	855	858	94%	95%	98%	97%	96%	96%
Turner	Elementary	PK-6	100%	874	874	689	707	691	683	657	608	79%	81%	79%	78%	75%	70%
University Park	Elementary	PK-6	100%	811	811	617	638	699	777	791	790	76%	79%	86%	96%	98%	97%
West Melbourne	Elementary	K-6	100%	618	618	551	552	552	552	552	552	89%	89%	89%	89%	89%	89%
Westside	Elementary	K-6	100%	857	857	700	691	647	609	543	485	82%	81%	76%	71%	63%	57%
Central	Middle	7-8	90%	1,694	1,525	1,142	1,115	1,165	1,184	1,266	1,337	75%	73%	76%	78%	83%	88%
Hoover	Middle	7-8	90%	732	659	507	496	564	539	540	559	77%	75%	86%	82%	82%	85%
Southwest	Middle	7-8	90%	1,308	1,177	882	869	871	835	944	1,049	75%	74%	74%	71%	80%	89%
Stone	Middle	7-8	90%	1,126	1,013	836	854	919	979	1,032	1,211	83%	84%	91%	97%	102%	120%
West Shore	Jr / Sr High	7-12	90%	1,404	1,264	957	956	956	956	956	956	76%	76%	76%	76%	76%	76%
Bayside	High	9-12	95%	2,353	2,235	1,687	1,646	1,611	1,649	1,631	1,671	76%	74%	72%	74%	73%	75%
Heritage	High	9-12	95%	2,436	2,314	1,851	1,846	1,822	1,819	1,804	1,830	80%	80%	79%	79%	78%	79%
Melbourne	High	9-12	95%	2,439	2,317	2,227	2,290	2,220	2,263	2,335	2,352	96%	99%	96%	98%	101%	102%
Palm Bay	High	PK, 9-12	95%	2,751	2,613	1,570	1,558	1,683	1,727	1,836	1,865	60%	60%	64%	66%	70%	71%
Totals: South Area				32,230	31,104	24,830	24,954	25,084	25,276	25,335	25,445	85%	86%	86%	87%	87%	87%

South Area Group Totals	Elementary		15,987	15,987	13,171	13,324	13,273	13,325	12,991	12,615	82%	83%	83%	83%	81%	79%
	Middle		4,860	4,374	3,367	3,334	3,519	3,537	3,782	4,156	77%	76%	81%	81%	87%	95%
	Jr / Sr High		1,404	1,264	957	956	956	956	956	956	86%	76%	76%	76%	76%	76%
	High		9,979	9,479	7,335	7,340	7,336	7,458	7,606	7,718	79%	77%	77%	79%	80%	81%

School Year 2016-17 -- 2020-21



School Total Capacity and Student Membership Projections by Area

School Information and Capacity						Student Membership					Capacity in Use						
School Information				Total Capacity		Current Year	Projected Membership (Note 4)					Current Year	Projected Capacity in Use (Note 5)				
School	Type	Grades	Utilization Factor (Note 1)	2016-2017 Student Stations (Note 2)	2016-2017 Factored Capacity (Note 3)	2015-16 Membership	2016-17	2017-18	2018-19	2019-20	2020-21	2015-16 Total Capacity in Use	2016-17	2017-18	2018-19	2019-20	2020-21
Central Area																	
Andersen	Elementary	K-6	100%	884	884	705	700	711	731	741	763	80%	79%	80%	83%	84%	86%
Cambridge	Elementary	PK-6	100%	765	765	666	687	678	673	664	642	87%	90%	89%	88%	87%	84%
Creel	Elementary	PK-6	100%	1,154	1,154	931	960	977	1,012	996	996	81%	83%	85%	88%	86%	86%
Croton	Elementary	PK-6	100%	795	795	665	657	669	707	709	721	84%	83%	84%	89%	89%	91%
Endeavour	Elementary	PK-6	100%	990	990	836	852	885	892	880	858	84%	86%	89%	90%	89%	87%
Fairglen	Elementary	PK-6	100%	753	753	691	701	670	661	653	654	92%	93%	89%	88%	87%	87%
Golfview	Elementary	PK-6	100%	777	777	647	644	642	642	655	655	83%	83%	83%	83%	84%	84%
Holland	Elementary	PK-6	100%	605	605	432	443	443	431	421	406	71%	73%	73%	71%	70%	67%
Longleaf	Elementary	PK-6	100%	790	790	631	626	616	633	612	594	80%	79%	78%	80%	78%	75%
Manatee	Elementary	K-6	100%	954	954	846	845	823	833	866	895	89%	89%	86%	87%	91%	94%
Ocean Breeze	Elementary	PK-6	100%	654	654	532	515	544	566	563	566	81%	79%	83%	87%	86%	87%
Quest	Elementary	PK-6	100%	950	950	848	852	954	1,121	1,264	1,339	89%	90%	100%	118%	133%	141%
Sabal	Elementary	PK-6	100%	785	785	565	573	584	606	605	613	72%	73%	74%	77%	77%	78%
Saturn	Elementary	PK-6	100%	958	958	785	779	774	762	776	779	82%	81%	81%	80%	81%	81%
Sea Park	Elementary	PK-6	100%	439	439	330	325	333	333	329	322	75%	74%	76%	76%	75%	73%
Sherwood	Elementary	PK-6	100%	609	609	518	505	521	530	538	553	85%	83%	86%	87%	88%	91%
Suntree	Elementary	K-6	100%	755	755	649	628	610	595	577	577	86%	83%	81%	79%	76%	76%
Surfside	Elementary	K-6	100%	523	523	449	464	465	467	457	464	86%	89%	89%	89%	87%	89%
Williams	Elementary	PK-6	100%	715	715	559	541	542	537	522	502	78%	76%	76%	75%	73%	70%
DeLaura	Middle	7-8	90%	1,068	961	686	679	723	767	849	850	71%	71%	75%	80%	88%	88%
Johnson	Middle	7-8	90%	1,133	1,020	785	776	827	818	847	917	77%	76%	81%	80%	83%	90%
Kennedy	Middle	7-8	90%	910	819	608	601	663	664	698	756	74%	73%	81%	81%	85%	92%
McNair	Middle	7-8	90%	679	611	472	502	511	504	521	505	77%	82%	84%	83%	85%	83%
Cocoa	Jr / Sr High	PK, 7-12	90%	1,980	1,782	1,498	1,601	1,665	1,724	1,801	1,892	84%	90%	93%	97%	101%	106%
Eau Gallie	High	PK, 9-12	95%	2,300	2,186	1,713	1,710	1,706	1,745	1,820	1,847	78%	78%	78%	80%	83%	85%
Rockledge	High	9-12	95%	1,766	1,677	1,447	1,450	1,526	1,630	1,690	1,690	86%	87%	91%	97%	101%	101%
Satellite	High	PK, 9-12	95%	1,605	1,525	1,345	1,351	1,309	1,316	1,286	1,334	88%	89%	86%	86%	84%	88%
Viera	High	PK, 9-12	95%	2,371	2,253	2,002	2,000	2,049	2,205	2,392	2,512	89%	89%	91%	98%	106%	112%
Totals: Central Area				28,667	27,689	22,841	22,967	23,420	24,105	24,732	25,202	89%	90%	92%	94%	97%	99%
Central Area Group Totals	Elementary			14,855	14,855	12,285	12,297	12,441	12,732	12,828	12,899	83%	83%	84%	86%	86%	87%
	Middle			3,790	3,411	2,551	2,558	2,724	2,753	2,915	3,028	75%	75%	80%	81%	86%	89%
	Jr / Sr High			1,980	1,782	1,498	1,601	1,665	1,724	1,801	1,892	84%	90%	93%	97%	101%	106%
	High			8,042	7,641	6,507	6,511	6,590	6,896	7,188	7,383	85%	85%	86%	90%	94%	97%

School Year 2016-17 -- 2020-21



School Total Capacity and Student Membership Projections by Area

School Information and Capacity						Student Membership					Capacity in Use						
School Information				Total Capacity		Current Year	Projected Membership (Note 4)					Current Year	Projected Capacity in Use (Note 5)				
School	Type	Grades	Utilization Factor (Note 1)	2016-2017 Student Stations (Note 2)	2016-2017 Factored Capacity (Note 3)	2015-16 Membership	2016-17	2017-18	2018-19	2019-20	2020-21	2015-16 Total Capacity in Use	2016-17	2017-18	2018-19	2019-20	2020-21
North Area																	
Apollo	Elementary	K-6	100%	902	902	857	826	851	882	919	913	95%	92%	94%	98%	102%	101%
Atlantis	Elementary	PK-6	100%	703	703	582	586	569	567	538	528	83%	83%	81%	81%	77%	75%
Audubon	Elementary	PK-6	100%	761	761	644	662	649	634	622	598	85%	87%	85%	83%	82%	79%
Cape View	Elementary	PK-6	100%	548	548	426	421	430	438	421	424	78%	77%	79%	80%	77%	77%
Carroll	Elementary	K-6	100%	751	751	638	634	631	639	639	654	85%	84%	84%	85%	85%	87%
Challenger 7	Elementary	PK-6	100%	573	573	514	507	489	482	470	463	90%	89%	85%	84%	82%	81%
Coquina	Elementary	K-6	100%	693	693	553	550	568	607	622	637	80%	79%	82%	88%	90%	92%
Enterprise	Elementary	K-6	100%	729	729	539	529	491	441	402	349	74%	73%	67%	61%	55%	48%
Freedom 7	Elementary	K-6	100%	475	475	413	414	414	414	414	414	87%	87%	87%	87%	87%	87%
Imperial Estates	Elementary	K-6	100%	729	729	650	650	679	725	736	765	89%	89%	93%	100%	101%	105%
Mila	Elementary	PK-6	100%	707	707	495	492	509	520	505	494	70%	70%	72%	74%	71%	70%
Mims	Elementary	PK-6	100%	725	725	517	538	542	563	537	540	71%	74%	75%	78%	74%	75%
Oak Park	Elementary	PK-6	100%	932	932	856	874	881	866	853	856	92%	94%	95%	93%	92%	92%
Pinewood (Note 6)	Elementary	PK-6	100%	547	547	479	466	490	523	547	565	88%	85%	90%	96%	100%	103%
Roosevelt	Elementary	K-6	100%	599	599	375	382	405	433	438	443	63%	64%	68%	72%	73%	74%
Stevenson	Elementary	K-6	100%	569	569	489	490	490	490	490	490	86%	86%	86%	86%	86%	86%
Tropical	Elementary	K-6	100%	910	910	766	760	741	747	730	720	84%	84%	81%	82%	80%	79%
Jackson	Middle	7-8	90%	727	654	578	575	574	611	654	708	88%	88%	88%	93%	100%	108%
Jefferson	Middle	7-8	90%	942	848	615	610	610	660	700	727	73%	72%	72%	78%	83%	86%
Madison	Middle	7-8	90%	825	743	438	464	470	501	543	529	59%	62%	63%	67%	73%	71%
Cocoa Beach	Jr / Sr High	7-12	90%	1,628	1,466	1,102	1,085	1,085	1,085	1,085	1,085	75%	74%	74%	74%	74%	74%
Edgewood	Jr / Sr High	7-12	90%	1,191	1,072	949	950	950	950	950	950	89%	89%	89%	89%	89%	89%
Space Coast	Jr / Sr High	7-12	90%	2,013	1,812	1,474	1,531	1,504	1,450	1,466	1,483	81%	85%	83%	80%	81%	82%
Astronaut	High	9-12	95%	1,522	1,446	1,108	1,077	1,050	1,035	1,032	1,081	77%	75%	73%	72%	71%	75%
Merritt Island	High	PK, 9-12	95%	2,015	1,915	1,545	1,575	1,585	1,508	1,510	1,541	81%	82%	83%	79%	79%	81%
Titusville	High	9-12	95%	1,970	1,872	1,393	1,413	1,411	1,443	1,413	1,433	74%	76%	75%	77%	76%	77%
Totals: North Area				24,686	23,681	18,995	19,061	19,068	19,214	19,236	19,390	83%	83%	83%	84%	84%	85%
North Area Group Totals	Elementary			11,853	11,853	9,793	9,781	9,829	9,971	9,883	9,853	83%	83%	83%	84%	83%	83%
	Middle			2,494	2,245	1,631	1,649	1,654	1,772	1,897	1,964	73%	74%	74%	79%	85%	88%
	Jr / Sr High			4,832	4,350	3,525	3,566	3,539	3,485	3,501	3,518	81%	82%	81%	80%	81%	81%
	High			5,507	5,233	4,046	4,065	4,046	3,986	3,955	4,055	77%	78%	77%	76%	76%	78%

School Year 2016-17 -- 2020-21



School Total Capacity and Student Membership Projections by Area

School Information and Capacity						Student Membership					Capacity in Use						
School Information				Total Capacity		Current Year	Projected Membership (Note 4)				Current Year	Projected Capacity in Use (Note 5)					
School	Type	Grades	Utilization Factor (Note 1)	2016-2017 Student Stations (Note 2)	2016-2017 Factored Capacity (Note 3)	2015-16 Membership	2016-17	2017-18	2018-19	2019-20	2020-21	2015-16 Total Capacity in Use	2016-17	2017-18	2018-19	2019-20	2020-21

School District Group Totals	Elementary			42,695	42,695	35,249	35,402	35,543	36,028	35,702	35,367	83%	83%	83%	84%	84%	83%
	Middle			11,144	10,030	7,549	7,541	7,897	8,062	8,594	9,148	75%	75%	79%	80%	86%	91%
	Jr / Sr High			8,216	7,396	5,980	6,123	6,160	6,165	6,258	6,366	81%	83%	83%	83%	85%	86%
	High			23,528	22,353	17,888	17,916	17,972	18,340	18,749	19,156	80%	80%	80%	82%	84%	86%

School District Grand Totals				85,583	82,474	66,666	66,982	67,572	68,595	69,303	70,037	81%	86%	87%	88%	89%	90%
-------------------------------------	--	--	--	---------------	---------------	---------------	---------------	---------------	---------------	---------------	---------------	------------	------------	------------	------------	------------	------------

Notes:

- Note 1: Utilization Factors are established by the Florida Department of Education's (FDOE) State Requirements for Educational Facilities (SREF).
- Note 2: Total Student Stations are based on the information contained in the FDOE Florida Inventory of School Houses (FISH) database on 12/01/15 plus the projected relocatable classroom changes for School Year 2016-17 (shown in red).
- Note 3: Factored Capacity is calculated by multiplying Satisfactory Student Stations by the Utilization Factor. Total Factored Capacity is the addition of the Permanent Factored Capacity plus the Relocatable Factored Capacity.
- Note 4: Projected Student Membership figures based on Finance 2016-17 Budget Projections combined with Growth Management Projections for 2017-18 to 2020-21
- Note 5: Projected Capacity in Use is calculated by dividing the Projected Student Membership by the Total Factored Capacity.
- Note 6: Pinewood student enrollment projections were reduced by 37 students due to a program change documented on 4/12/2016.

School Year 2016-17 -- 2020-21



School Permanent Capacity and Student Membership Projections by Type

School Information and Capacity				Projected Student Membership								Projected Capacity in Use					
School Information				Permanent Only		Current Year	(Note 4)					Current Year	(Note 5)				
School	Type	Grades	Utilization Factor (Note 1)	2015-2016 Student Stations (Note 2)	2015-2016 Factored Capacity (Note 3)	2015-16	2016-17	2017-18	2018-19	2019-20	2020-21	2015-16	2016-17	2017-18	2018-19	2019-20	2020-21
Allen	Elementary	PK-6	100%	663	663	605	624	610	611	612	595	91%	94%	92%	92%	92%	90%
Andersen	Elementary	K-6	100%	840	840	705	700	711	731	741	763	84%	83%	85%	87%	88%	91%
Apollo	Elementary	K-6	100%	902	902	857	826	851	882	919	913	95%	92%	94%	98%	102%	101%
Atlantis	Elementary	PK-6	100%	703	703	582	586	569	567	538	528	83%	83%	81%	81%	77%	75%
Audubon	Elementary	PK-6	100%	761	761	644	662	649	634	622	598	85%	87%	85%	83%	82%	79%
Cambridge	Elementary	PK-6	100%	649	649	666	687	678	673	664	642	103%	106%	105%	104%	102%	99%
Cape View	Elementary	PK-6	100%	548	548	426	421	430	438	421	424	78%	77%	79%	80%	77%	77%
Carroll	Elementary	K-6	100%	751	751	638	634	631	639	639	654	85%	84%	84%	85%	85%	87%
Challenger 7	Elementary	PK-6	100%	551	551	514	507	489	482	470	463	93%	92%	89%	88%	85%	84%
Columbia	Elementary	PK-6	100%	685	685	577	556	550	544	533	511	84%	81%	80%	79%	78%	75%
Coquina	Elementary	K-6	100%	627	627	553	550	568	607	622	637	88%	88%	91%	97%	99%	102%
Creel	Elementary	PK-6	100%	1,088	1,088	931	960	977	1,012	996	996	86%	88%	90%	93%	92%	92%
Croton	Elementary	PK-6	100%	707	707	665	657	669	707	709	721	94%	93%	95%	100%	100%	102%
Discovery	Elementary	PK-6	100%	826	826	634	626	615	594	568	559	77%	76%	75%	72%	69%	68%
Endeavour	Elementary	PK-6	100%	852	852	836	852	885	892	880	858	98%	100%	104%	105%	103%	101%
Enterprise	Elementary	K-6	100%	707	707	539	529	491	441	402	349	76%	75%	69%	62%	57%	49%
Fairglen	Elementary	PK-6	100%	753	753	691	701	670	661	653	654	92%	93%	89%	88%	87%	87%
Freedom 7	Elementary	K-6	100%	453	453	413	414	414	414	414	414	91%	91%	91%	91%	91%	91%
Gemini	Elementary	K-6	100%	667	667	483	456	429	431	427	422	72%	68%	64%	65%	64%	63%
Golfview	Elementary	PK-6	100%	689	689	647	644	642	642	655	655	94%	94%	93%	93%	95%	95%
Harbor City	Elementary	PK-6	100%	453	453	434	432	421	418	411	389	96%	95%	93%	92%	91%	86%
Holland	Elementary	PK-6	100%	605	605	432	443	443	431	421	406	71%	73%	73%	71%	70%	67%
Imperial Estates	Elementary	K-6	100%	729	729	650	650	679	725	736	765	89%	89%	93%	100%	101%	105%
Indialantic	Elementary	K-6	100%	754	754	753	746	732	733	712	715	100%	99%	97%	97%	94%	95%
Jupiter	Elementary	PK-6	100%	780	780	810	831	846	877	866	872	104%	107%	109%	112%	111%	112%
Lockmar	Elementary	PK-6	100%	892	892	721	727	709	690	664	638	81%	82%	80%	77%	74%	72%
Longleaf	Elementary	PK-6	100%	790	790	631	626	616	633	612	594	80%	79%	78%	80%	78%	75%
Manatee	Elementary	K-6	100%	866	866	846	845	823	833	866	895	98%	98%	95%	96%	100%	103%
McAuliffe	Elementary	PK-6	100%	754	754	744	768	774	787	775	765	99%	102%	103%	104%	103%	102%
Meadowlane Intermediate	Elementary	3-6	100%	894	894	1,003	1,040	1,035	1,041	977	931	112%	116%	116%	116%	109%	104%
Meadowlane Primary	Elementary	K-6	100%	824	824	740	730	723	703	695	692	90%	89%	88%	85%	84%	84%
Mila	Elementary	PK-6	100%	707	707	495	492	509	520	505	494	70%	70%	72%	74%	71%	70%
Mims	Elementary	PK-6	100%	725	725	517	538	542	563	537	540	71%	74%	75%	78%	74%	75%
Oak Park	Elementary	PK-6	100%	888	888	856	874	881	866	853	856	96%	98%	99%	98%	96%	96%
Ocean Breeze	Elementary	PK-6	100%	498	498	532	515	544	566	563	566	107%	103%	109%	114%	113%	114%

School Year 2016-17 -- 2020-21



School Permanent Capacity and Student Membership Projections by Type

School Information and Capacity					Projected Student Membership							Projected Capacity in Use					
School Information				Permanent Only		Current Year	(Note 4)					Current Year	(Note 5)				
School	Type	Grades	Utilization Factor (Note 1)	2015-2016 Student Stations (Note 2)	2015-2016 Factored Capacity (Note 3)	2015-16	2016-17	2017-18	2018-19	2019-20	2020-21	2015-16	2016-17	2017-18	2018-19	2019-20	2020-21
Palm Bay	Elementary	PK-6	100%	829	829	815	836	808	803	777	724	98%	101%	98%	97%	94%	87%
Pinewood (Note 6)	Elementary	PK-6	100%	503	503	479	466	490	523	547	565	95%	93%	97%	104%	109%	112%
Port Malabar	Elementary	PK-6	100%	768	768	761	775	765	767	747	715	99%	101%	100%	100%	97%	93%
Quest	Elementary	PK-6	100%	910	910	848	852	954	1,121	1,264	1,339	93%	94%	105%	123%	139%	147%
Riviera	Elementary	PK-6	100%	689	689	690	738	791	833	829	794	100%	107%	115%	121%	120%	115%
Roosevelt	Elementary	K-6	100%	599	599	375	382	405	433	438	443	63%	64%	68%	72%	73%	74%
Sabal	Elementary	PK-6	100%	679	679	565	573	584	606	605	613	83%	84%	86%	89%	89%	90%
Saturn	Elementary	PK-6	100%	830	830	785	779	774	762	776	779	95%	94%	93%	92%	94%	94%
Sea Park	Elementary	PK-6	100%	439	439	330	325	333	333	329	322	75%	74%	76%	76%	75%	73%
Sherwood	Elementary	PK-6	100%	609	609	518	505	521	530	538	553	85%	83%	86%	87%	88%	91%
Stevenson	Elementary	K-6	100%	569	569	489	490	490	490	490	490	86%	86%	86%	86%	86%	86%
Sunrise	Elementary	PK-6	100%	895	895	844	851	876	872	855	858	94%	95%	98%	97%	96%	96%
Suntree	Elementary	K-6	100%	689	689	649	628	610	595	577	577	94%	91%	89%	86%	84%	84%
Surfside	Elementary	K-6	100%	439	439	449	464	465	467	457	464	102%	106%	106%	106%	104%	106%
Tropical	Elementary	K-6	100%	910	910	766	760	741	747	730	720	84%	84%	81%	82%	80%	79%
Turner	Elementary	PK-6	100%	830	830	689	707	691	683	657	608	83%	85%	83%	82%	79%	73%
University Park	Elementary	PK-6	100%	679	679	617	638	699	777	791	790	91%	94%	103%	114%	117%	116%
West Melbourne	Elementary	K-6	100%	618	618	551	552	552	552	552	552	89%	89%	89%	89%	89%	89%
Westside	Elementary	K-6	100%	835	835	700	691	647	609	543	485	84%	83%	78%	73%	65%	58%
Williams	Elementary	PK-6	100%	627	627	559	541	542	537	522	502	89%	86%	86%	86%	83%	80%
Central	Middle	7-8	90%	1,694	1,525	1,142	1,115	1,165	1,184	1,266	1,337	75%	73%	76%	78%	83%	88%
DeLauria	Middle	7-8	90%	1,068	961	686	679	723	767	849	850	71%	71%	75%	80%	88%	88%
Hoover	Middle	7-8	90%	732	659	507	496	564	539	540	559	77%	75%	86%	82%	82%	85%
Jackson	Middle	7-8	90%	727	654	578	575	574	611	654	708	88%	88%	88%	93%	100%	108%
Jefferson	Middle	7-8	90%	942	848	615	610	610	660	700	727	73%	72%	72%	78%	83%	86%
Johnson	Middle	7-8	90%	1,111	1,000	785	776	827	818	847	917	79%	78%	83%	82%	85%	92%
Kennedy	Middle	7-8	90%	749	674	608	601	663	664	698	756	90%	89%	98%	99%	104%	112%
Madison	Middle	7-8	90%	825	743	438	464	470	501	543	529	59%	62%	63%	67%	73%	71%
McNair	Middle	7-8	90%	679	611	472	502	511	504	521	505	77%	82%	84%	83%	85%	83%
Southwest	Middle	7-8	90%	1,308	1,177	882	869	871	835	944	1,049	75%	74%	74%	71%	80%	89%
Stone	Middle	7-8	90%	1,126	1,013	836	854	919	979	1,032	1,211	83%	84%	91%	97%	102%	120%
Cocoa	Jr / Sr High	PK, 7-12	90%	1,730	1,557	1,498	1,601	1,665	1,724	1,801	1,892	96%	103%	107%	111%	116%	122%
Cocoa Beach	Jr / Sr High	7-12	90%	1,253	1,128	1,102	1,085	1,085	1,085	1,085	1,085	98%	96%	96%	96%	96%	96%
Edgewood	Jr / Sr High	7-12	90%	1,100	990	949	950	950	950	950	950	96%	96%	96%	96%	96%	96%
Space Coast	Jr / Sr High	7-12	90%	1,975	1,778	1,474	1,531	1,504	1,450	1,466	1,483	83%	86%	85%	82%	83%	83%
West Shore	Jr / Sr High	7-12	90%	1,232	1,109	957	956	956	956	956	956	86%	86%	86%	86%	86%	86%

School Year 2016-17 -- 2020-21



School Permanent Capacity and Student Membership Projections by Type

School Information and Capacity				Projected Student Membership								Projected Capacity in Use					
School Information				Permanent Only		Current Year	(Note 4)					Current Year	(Note 5)				
School	Type	Grades	Utilization Factor (Note 1)	2015-2016 Student Stations (Note 2)	2015-2016 Factored Capacity (Note 3)	2015-16	2016-17	2017-18	2018-19	2019-20	2020-21	2015-16	2016-17	2017-18	2018-19	2019-20	2020-21
Astronaut	High	9-12	95%	1,522	1,446	1,108	1,077	1,050	1,035	1,032	1,081	77%	75%	73%	72%	71%	75%
Bayside	High	9-12	95%	2,353	2,235	1,687	1,646	1,611	1,649	1,631	1,671	76%	74%	72%	74%	73%	75%
Eau Gallie	High	PK, 9-12	95%	2,050	1,948	1,713	1,710	1,706	1,745	1,820	1,847	88%	88%	88%	90%	93%	95%
Heritage	High	9-12	95%	2,436	2,314	1,851	1,846	1,822	1,819	1,804	1,830	80%	80%	79%	79%	78%	79%
Melbourne	High	9-12	95%	2,439	2,317	2,227	2,290	2,220	2,263	2,335	2,352	96%	99%	96%	98%	101%	102%
Merritt Island	High	PK, 9-12	95%	1,965	1,867	1,545	1,575	1,585	1,508	1,510	1,541	83%	84%	85%	81%	81%	83%
Palm Bay	High	PK, 9-12	95%	2,576	2,447	1,570	1,558	1,683	1,727	1,836	1,865	64%	64%	69%	71%	75%	76%
Rockledge	High	9-12	95%	1,691	1,606	1,447	1,450	1,526	1,630	1,690	1,690	90%	90%	95%	102%	105%	105%
Satellite	High	PK, 9-12	95%	1,580	1,501	1,345	1,351	1,309	1,316	1,286	1,334	90%	90%	87%	88%	86%	89%
Titusville	High	9-12	95%	1,970	1,872	1,393	1,413	1,411	1,443	1,413	1,433	74%	76%	75%	77%	76%	77%
Viera	High	PK, 9-12	95%	2,246	2,134	2,002	2,000	2,049	2,205	2,392	2,512	94%	94%	96%	103%	112%	118%

School District Group Totals	Elementary		39,527	39,527	35,249	35,402	35,543	36,028	35,702	35,367	89%	90%	90%	91%	90%	90%
	Middle		10,961	9,865	7,549	7,541	7,897	8,062	8,594	9,148	77%	76%	80%	82%	87%	93%
	Jr / Sr High		7,290	6,562	5,980	6,123	6,160	6,165	6,258	6,366	91%	93%	94%	94%	95%	97%
	High		22,828	21,687	17,888	17,916	17,972	18,340	18,749	19,156	83%	83%	83%	85%	87%	88%

School District Grand Totals			80,606	77,641	66,666	66,982	67,572	68,595	69,303	70,037	86%	86%	87%	88%	89%	90%
-------------------------------------	--	--	---------------	---------------	---------------	---------------	---------------	---------------	---------------	---------------	------------	------------	------------	------------	------------	------------

Notes:

Note 1: Utilization Factors are established by the Florida Department of Education's (FDOE) State Requirements for Educational Facilities (SREF).

DOE Utilization Factors for Brevard Schools

Elementary Schools: 100%

Middle Schools: 90%

Jr/Sr High Schools: 90%

Senior High Schools: 95%

Note 2: Permanent Student Stations are based on the information contained in the FDOE Florida Inventory of School Houses (FISH) database on 12/01/15

Note 3: Factored Capacity is calculated by multiplying Satisfactory Student Stations by the Utilization Factor. Total Factored Capacity is the addition of the Permanent Factored Capacity plus the Relocatable Factored Capacity.

Note 4: Projected Student Membership figures based on Finance 2015-16 Budget Projections combined with Growth Management Projections for 2016-17 to 2019-20.

Note 5: Projected Capacity in Use is calculated by dividing the Projected Student Membership by the Permanent Factored Capacity.

Note 6: Pinewood student enrollment projections were reduced by 37 students due to a program change documented on 4/12/2016.

School Year 2016-17 -- 2020-21



School Total Capacity and Student Membership Projections by Type

School Information and Capacity						Student Membership						Capacity in Use					
School Information				Total Capacity		Current Year	Projected Membership (Note 4)					Current Year	Projected Capacity in Use (Note 5)				
School	Type	Grades	Utilization Factor (Note 1)	2016-2017 Student Stations (Note 2)	2016-2017 Factored Capacity (Note 3)	2015-16 Membership	2016-17	2017-18	2018-19	2019-20	2020-21	2015-16 Total Capacity in Use	2016-17	2017-18	2018-19	2019-20	2020-21
Allen	Elementary	PK-6	100%	751	751	605	624	610	611	612	595	81%	83%	81%	81%	82%	79%
Andersen	Elementary	K-6	100%	884	884	705	700	711	731	741	763	80%	79%	80%	83%	84%	86%
Apollo	Elementary	K-6	100%	902	902	857	826	851	882	919	913	95%	92%	94%	98%	102%	101%
Atlantis	Elementary	PK-6	100%	703	703	582	586	569	567	538	528	83%	83%	81%	81%	77%	75%
Audubon	Elementary	PK-6	100%	761	761	644	662	649	634	622	598	85%	87%	85%	83%	82%	79%
Cambridge	Elementary	PK-6	100%	765	765	666	687	678	673	664	642	87%	90%	89%	88%	87%	84%
Cape View	Elementary	PK-6	100%	548	548	426	421	430	438	421	424	78%	77%	79%	80%	77%	77%
Carroll	Elementary	K-6	100%	751	751	638	634	631	639	639	654	85%	84%	84%	85%	85%	87%
Challenger 7	Elementary	K-6	100%	573	573	514	507	489	482	470	463	90%	89%	85%	84%	82%	81%
Columbia	Elementary	PK-6	100%	751	751	577	556	550	544	533	511	77%	74%	73%	72%	71%	68%
Coquina	Elementary	PK-6	100%	693	693	553	550	568	607	622	637	80%	79%	82%	88%	90%	92%
Creel	Elementary	PK-6	100%	1,154	1,154	931	960	977	1,012	996	996	81%	83%	85%	88%	86%	86%
Croton	Elementary	PK-6	100%	795	795	665	657	669	707	709	721	84%	83%	84%	89%	89%	91%
Discovery	Elementary	PK-6	100%	980	980	634	626	615	594	568	559	65%	64%	63%	61%	58%	57%
Endeavour	Elementary	PK-6	100%	990	990	836	852	885	892	880	858	84%	86%	89%	90%	89%	87%
Enterprise	Elementary	K-6	100%	729	729	539	529	491	441	402	349	74%	73%	67%	61%	55%	48%
Fairglen	Elementary	PK-6	100%	753	753	691	701	670	661	653	654	92%	93%	89%	88%	87%	87%
Freedom 7	Elementary	K-6	100%	475	475	413	414	414	414	414	414	87%	87%	87%	87%	87%	87%
Gemini	Elementary	K-6	100%	711	711	483	456	429	431	427	422	68%	64%	60%	61%	60%	59%
Golfview	Elementary	PK-6	100%	777	777	647	644	642	642	655	655	83%	83%	83%	83%	84%	84%
Harbor City	Elementary	K-6	100%	629	629	434	432	421	418	411	389	69%	69%	67%	67%	65%	62%
Holland	Elementary	K-6	100%	605	605	432	443	443	431	421	406	71%	73%	73%	71%	70%	67%
Imperial Estates	Elementary	K-6	100%	729	729	650	650	679	725	736	765	89%	89%	93%	100%	101%	105%
Indialantic	Elementary	K-6	100%	798	798	753	746	732	733	712	715	94%	94%	92%	92%	89%	90%
Jupiter	Elementary	PK-6	100%	930	930	810	831	846	877	866	872	87%	89%	91%	94%	93%	94%
Lockmar	Elementary	K-6	100%	892	892	721	727	709	690	664	638	81%	82%	80%	77%	74%	72%
Longleaf	Elementary	PK-6	100%	790	790	631	626	616	633	612	594	80%	79%	78%	80%	78%	75%
Manatee	Elementary	PK-6	100%	954	954	846	845	823	833	866	895	89%	89%	86%	87%	91%	94%
McAuliffe	Elementary	PK-6	100%	918	918	744	768	774	787	775	765	81%	84%	84%	86%	84%	83%
Meadowlane Intermediate	Elementary	3-6	100%	1,114	1,114	1,003	1,040	1,035	1,041	977	931	90%	93%	93%	93%	88%	84%
Meadowlane Primary	Elementary	K-2	100%	824	824	740	730	723	703	695	692	90%	89%	88%	85%	84%	84%
Mila	Elementary	PK-6	100%	707	707	495	492	509	520	505	494	70%	70%	72%	74%	71%	70%
Mims	Elementary	PK-6	100%	725	725	517	538	542	563	537	540	71%	74%	75%	78%	74%	75%
Oak Park	Elementary	PK-6	100%	932	932	856	874	881	866	853	856	92%	94%	95%	93%	92%	92%
Ocean Breeze	Elementary	K-6	100%	654	654	532	515	544	566	563	566	81%	79%	83%	87%	86%	87%

School Year 2016-17 -- 2020-21



School Total Capacity and Student Membership Projections by Type

School Information and Capacity						Student Membership						Capacity in Use					
School Information				Total Capacity		Current Year	Projected Membership (Note 4)					Current Year	Projected Capacity in Use (Note 5)				
School	Type	Grades	Utilization Factor (Note 1)	2016-2017 Student Stations (Note 2)	2016-2017 Factored Capacity (Note 3)	2015-16 Membership	2016-17	2017-18	2018-19	2019-20	2020-21	2015-16 Total Capacity in Use	2016-17	2017-18	2018-19	2019-20	2020-21
Palm Bay	Elementary	PK-6	100%	1,005	1,005	815	836	808	803	777	724	81%	83%	80%	80%	77%	72%
Pinewood (Note 6)	Elementary	PK-6	100%	547	547	479	466	490	523	547	565	88%	85%	90%	96%	100%	103%
Port Malabar	Elementary	K-6	100%	852	852	761	775	765	767	747	715	89%	91%	90%	90%	88%	84%
Quest	Elementary	K-6	100%	950	950	848	852	954	1,121	1,264	1,339	89%	90%	100%	118%	133%	141%
Riviera	Elementary	PK-6	100%	777	777	690	738	791	833	829	794	89%	95%	102%	107%	107%	102%
Roosevelt	Elementary	PK-6	100%	599	599	375	382	405	433	438	443	63%	64%	68%	72%	73%	74%
Sabal	Elementary	PK-6	100%	785	785	565	573	584	606	605	613	72%	73%	74%	77%	77%	78%
Saturn	Elementary	PK-6	100%	958	958	785	779	774	762	776	779	82%	81%	81%	80%	81%	81%
Sea Park	Elementary	PK-6	100%	439	439	330	325	333	333	329	322	75%	74%	76%	76%	75%	73%
Sherwood	Elementary	PK-6	100%	609	609	518	505	521	530	538	553	85%	83%	86%	87%	88%	91%
Stevenson	Elementary	K-6	100%	569	569	489	490	490	490	490	490	86%	86%	86%	86%	86%	86%
Sunrise	Elementary	PK-6	100%	895	895	844	851	876	872	855	858	94%	95%	98%	97%	96%	96%
Suntree	Elementary	K-6	100%	755	755	649	628	610	595	577	577	86%	83%	81%	79%	76%	76%
Surfside	Elementary	K-6	100%	523	523	449	464	465	467	457	464	86%	89%	89%	89%	87%	89%
Tropical	Elementary	K-6	100%	910	910	766	760	741	747	730	720	84%	84%	81%	82%	80%	79%
Turner	Elementary	PK-6	100%	874	874	689	707	691	683	657	608	79%	81%	79%	78%	75%	70%
University Park	Elementary	PK-6	100%	811	811	617	638	699	777	791	790	76%	79%	86%	96%	98%	97%
West Melbourne	Elementary	K-6	100%	618	618	551	552	552	552	552	552	89%	89%	89%	89%	89%	89%
Westside	Elementary	K-6	100%	857	857	700	691	647	609	543	485	82%	81%	76%	71%	63%	57%
Williams	Elementary	K-6	100%	715	715	559	541	542	537	522	502	78%	76%	76%	75%	73%	70%
Central	Middle	7-8	90%	1,694	1,525	1,142	1,115	1,165	1,184	1,266	1,337	75%	73%	76%	78%	83%	88%
DeLaura	Middle	7-8	90%	1,068	961	686	679	723	767	849	850	71%	71%	75%	80%	88%	88%
Hoover	Middle	7-8	90%	732	659	507	496	564	539	540	559	77%	75%	86%	82%	82%	85%
Jackson	Middle	7-8	90%	727	654	578	575	574	611	654	708	88%	88%	88%	93%	100%	108%
Jefferson	Middle	7-8	90%	942	848	615	610	610	660	700	727	73%	72%	72%	78%	83%	86%
Johnson	Middle	7-8	90%	1,133	1,020	785	776	827	818	847	917	77%	76%	81%	80%	83%	90%
Kennedy	Middle	7-8	90%	910	819	608	601	663	664	698	756	74%	73%	81%	81%	85%	92%
Madison	Middle	7-8	90%	825	743	438	464	470	501	543	529	59%	62%	63%	67%	73%	71%
McNair	Middle	7-8	90%	679	611	472	502	511	504	521	505	77%	82%	84%	83%	85%	83%
Southwest	Middle	7-8	90%	1,308	1,177	882	869	871	835	944	1,049	75%	74%	74%	71%	80%	89%
Stone	Middle	7-8	90%	1,126	1,013	836	854	919	979	1,032	1,211	83%	84%	91%	97%	102%	120%
Cocoa	Jr / Sr High	PK,7-12	90%	1,980	1,782	1,498	1,601	1,665	1,724	1,801	1,892	84%	90%	93%	97%	101%	106%
Cocoa Beach	Jr / Sr High	7-12	90%	1,628	1,466	1,102	1,085	1,085	1,085	1,085	1,085	75%	74%	74%	74%	74%	74%
Edgewood	Jr / Sr High	7-12	90%	1,191	1,072	949	950	950	950	950	950	89%	89%	89%	89%	89%	89%
Space Coast	Jr / Sr High	7-12	90%	2,013	1,812	1,474	1,531	1,504	1,450	1,466	1,483	81%	85%	83%	80%	81%	82%
West Shore	Jr / Sr High	7-12	90%	1,404	1,264	957	956	956	956	956	956	76%	76%	76%	76%	76%	76%

School Year 2016-17 -- 2020-21



School Total Capacity and Student Membership Projections by Type

School Information and Capacity						Student Membership					Capacity in Use						
School Information				Total Capacity		Current Year	Projected Membership (Note 4)					Current Year	Projected Capacity in Use (Note 5)				
School	Type	Grades	Utilization Factor (Note 1)	2016-2017 Student Stations (Note 2)	2016-2017 Factored Capacity (Note 3)	2015-16 Membership	2016-17	2017-18	2018-19	2019-20	2020-21	2015-16 Total Capacity in Use	2016-17	2017-18	2018-19	2019-20	2020-21
Astronaut	High	9-12	95%	1,522	1,446	1,108	1,077	1,050	1,035	1,032	1,081	77%	75%	73%	72%	71%	75%
Bayside	High	9-12	95%	2,353	2,235	1,687	1,646	1,611	1,649	1,631	1,671	76%	74%	72%	74%	73%	75%
Eau Gallie	High	PK, 9-12	95%	2,300	2,186	1,713	1,710	1,706	1,745	1,820	1,847	78%	78%	78%	80%	83%	85%
Heritage	High	9-11	95%	2,436	2,314	1,851	1,846	1,822	1,819	1,804	1,830	80%	80%	79%	79%	78%	79%
Melbourne	High	9-12	95%	2,439	2,317	2,227	2,290	2,220	2,263	2,335	2,352	96%	99%	96%	98%	101%	102%
Merritt Island	High	PK, 9-12	95%	2,015	1,915	1,545	1,575	1,585	1,508	1,510	1,541	81%	82%	83%	79%	79%	81%
Palm Bay	High	PK, 9-12	95%	2,751	2,613	1,570	1,558	1,683	1,727	1,836	1,865	60%	60%	64%	66%	70%	71%
Rockledge	High	9-12	95%	1,766	1,677	1,447	1,450	1,526	1,630	1,690	1,690	86%	87%	91%	97%	101%	101%
Satellite	High	PK, 9-12	95%	1,605	1,525	1,345	1,351	1,309	1,316	1,286	1,334	88%	89%	86%	86%	84%	88%
Titusville	High	PK, 9-12	95%	1,970	1,872	1,393	1,413	1,411	1,443	1,413	1,433	74%	76%	75%	77%	76%	77%
Viera	High	PK, 9-12	95%	2,371	2,253	2,002	2,000	2,049	2,205	2,392	2,512	89%	89%	91%	98%	106%	112%

School District Group Totals	Elementary		42,695	42,695	35,249	35,402	35,543	36,028	35,702	35,367	83%	83%	83%	84%	84%	83%
	Middle		11,144	10,030	7,549	7,541	7,897	8,062	8,594	9,148	75%	75%	79%	80%	86%	91%
	Jr / Sr High		8,216	7,396	5,980	6,123	6,160	6,165	6,258	6,366	81%	83%	83%	83%	85%	86%
	High		23,528	22,353	17,888	17,916	17,972	18,340	18,749	19,156	80%	80%	80%	82%	84%	86%
School District Grand Totals			85,583	82,474	66,666	66,982	67,572	68,595	69,303	70,037	81%	81%	82%	83%	84%	85%

Notes:

- Note 1: Utilization Factors are established by the Florida Department of Education's (FDOE) State Requirements for Educational Facilities (SREF).
- Note 2: Total Student Stations are based on the information contained in the FDOE Florida Inventory of School Houses (FISH) database on 12/01/15 plus the projected relocatable classroom changes for School Year 2016-17 (shown in red).
- Note 3: Factored Capacity is calculated by multiplying Satisfactory Student Stations by the Utilization Factor. Total Factored Capacity is the addition of the Permanent Factored Capacity plus the Relocatable Factored Capacity.
- Note 4: Projected Student Membership figures based on Finance 2016-17 Budget Projections combined with Growth Management Projections for 2017-18 to 2020-21
- Note 5: Projected Capacity in Use is calculated by dividing the Projected Student Membership by the Total Factored Capacity.
- Note 6: Pinewood student enrollment projections were reduced by 37 students due to a program change documented on 4/12/2016.

Section 6

Relocatable Classroom Changes: 2016 - 2017

- A. By Area
- B. By School Type
- C. Relocatable Inventory 2015-2016



School Year 2016-17 Relocatable Classroom Changes

School Capacity and Enrollment Projections by School Area



School Information and Capacity																	
School Information		Student	Permanent		2015-2016 Relocatables			2015-16	Relocatable Changes			2016 - 2017 Relocatables			2016-17 Totals		
School	Utilization Factor	2016 - 2017 Projected Membership	2015-16 Student Stations	Factored Capacity	Class-room Units	2015-16 Student Stations	Factored Capacity	Total Capacity In Use	Class-room Units	Student Stations	Factored Capacity	Class-room Units	Student Stations	Factored Capacity	Total Student Stations	Total Factored Capacity	Total Capacity In Use
	(Note 1)	(Note 2)	(Note 3)	(Note 4)		(Note 3)	(Note 4)	(Note 5)				(Note 6)	(Note 7)	(Note 8)			(Note 9)
South Area																	
Allen	100%	624	663	663	5	88	88	83%				5	88	88	751	751	83%
Columbia	100%	556	685	685	3	66	66	74%				3	66	66	751	751	74%
Discovery	100%	626	826	826	7	154	154	64%				7	154	154	980	980	64%
Gemini	100%	456	667	667	2	44	44	64%				2	44	44	711	711	64%
Harbor City	100%	432	453	453	8	176	176	69%				8	176	176	629	629	69%
Indialantic	100%	746	754	754	2	44	44	93%				2	44	44	798	798	94%
Jupiter	100%	831	780	780	7	150	150	89%				7	150	150	930	930	89%
Lockmar	100%	727	892	892				82%							892	892	82%
McAuliffe	100%	768	754	754	8	164	164	84%				8	164	164	918	918	84%
Meadowlane Intermediate	100%	1,040	894	894	11	220	220	93%				11	220	220	1,114	1,114	93%
Meadowlane Primary	100%	730	824	824				89%							824	824	89%
Palm Bay	100%	836	829	829	8	176	176	83%				8	176	176	1,005	1,005	83%
Port Malabar	100%	775	768	768	4	84	84	91%				4	84	84	852	852	91%
Riviera	100%	738	689	689	4	88	88	95%				4	88	88	777	777	95%
Sunrise	100%	851	895	895				95%							895	895	95%
Turner	100%	707	830	830	2	44	44	81%				2	44	44	874	874	81%
University Park	100%	638	679	679	6	132	132	79%				6	132	132	811	811	79%
West Melbourne	100%	552	618	618				89%							618	618	89%
Westside	100%	691	835	835	1	22	22	81%				1	22	22	857	857	81%
Central	90%	1,115	1,694	1,525				73%							1,694	1,525	73%
Hoover	90%	496	732	659				75%							732	659	75%
Southwest	90%	869	1,308	1,177				74%							1,308	1,177	74%
Stone	90%	854	1,126	1,013				84%							1,126	1,013	84%
West Shore	90%	956	1,232	1,109	7	172	155	76%				7	172	155	1,404	1,264	76%
Bayside	95%	1,646	2,353	2,235				74%							2,353	2,235	74%
Heritage	95%	1,846	2,436	2,314				80%							2,436	2,314	80%
Melbourne	95%	2,290	2,439	2,317				99%							2,439	2,317	99%
Palm Bay	95%	1,558	2,576	2,447	7	175	166	60%				7	175	166	2,751	2,613	60%
Totals:		24,954	30,231	29,131	92	1,999	1,973	80%				92	1,999	1,973	32,230	31,104	80%
Group Totals	Elementary	13,324	14,335	14,335	78	1,652	1,652	83%	-	-	-	78	1,652	1,652	15,987	15,987	83%
	Middle	3,334	4,860	4,374	-	-	-	76%	-	-	-	-	-	-	4,860	4,374	76%
	Jr/Sr High	956	1,232	1,109	7	172	155	76%	-	-	-	7	172	155	1,404	1,264	76%
	High	7,340	9,804	9,313	7	175	166	77%	-	-	-	7	175	166	9,979	9,479	77%

School Year 2016-17 Relocatable Classroom Changes

School Capacity and Enrollment Projections by School Area



School Information and Capacity																	
School Information		Student	Permanent		2015-2016 Relocatables			2015-16	Relocatable Changes			2016 - 2017 Relocatables			2016-17 Totals		
School	Utilization Factor	2016 - 2017 Projected Membership	2015-16 Student Stations	Factored Capacity	Class-room Units	2015-16 Student Stations	Factored Capacity	Total Capacity In Use	Class-room Units	Student Stations	Factored Capacity	Class-room Units	Student Stations	Factored Capacity	Total Student Stations	Total Factored Capacity	Total Capacity In Use
	(Note 1)	(Note 2)	(Note 3)	(Note 4)		(Note 3)	(Note 4)	(Note 5)				(Note 6)	(Note 7)	(Note 8)			(Note 9)
Central Area																	
Andersen	100%	700	840	840	2	44	44	79%				2	44	44	884	884	79%
Cambridge	100%	687	649	649	6	116	116	90%				6	116	116	765	765	90%
Creel	100%	960	1,088	1,088	3	66	66	83%				3	66	66	1,154	1,154	83%
Croton	100%	657	707	707	4	88	88	83%				4	88	88	795	795	83%
Endeavour	100%	852	852	852	7	138	138	86%				7	138	138	990	990	86%
Fairglen	100%	701	753	753				93%							753	753	93%
Golfview	100%	644	689	689	4	88	88	83%				4	88	88	777	777	83%
Holland	100%	443	605	605				73%							605	605	73%
Longleaf	100%	626	790	790				79%							790	790	79%
Manatee	100%	845	866	866	7	132	132	85%	(2)	(44)	(44)	5	88	88	954	954	89%
Ocean Breeze	100%	515	498	498	8	156	156	79%				8	156	156	654	654	79%
Quest	100%	852	910	910	3	40	40	90%				3	40	40	950	950	90%
Sabal	100%	573	679	679	5	106	106	73%				5	106	106	785	785	73%
Saturn	100%	779	830	830	6	128	128	81%				6	128	128	958	958	81%
Sea Park	100%	325	439	439				74%							439	439	74%
Sherwood	100%	505	609	609				83%							609	609	83%
Suntree	100%	628	689	689	3	66	66	83%				3	66	66	755	755	83%
Surfside	100%	464	439	439	3	62	62	93%	1	22	22	4	84	84	523	523	89%
Williams	100%	541	627	627	4	88	88	76%				4	88	88	715	715	76%
DeLaura	90%	679	1,068	961				71%							1,068	961	71%
Johnson	90%	776	1,111	1,000	1	22	20	76%				1	22	20	1,133	1,020	76%
Kennedy	90%	601	749	674	7	161	145	73%				7	161	145	910	819	73%
McNair	90%	502	679	611				82%							679	611	82%
Cocoa	90%	1,601	1,730	1,557	10	250	225	90%				10	250	225	1,980	1,782	90%
Eau Gallie	95%	1,710	2,050	1,948	10	250	238	78%				10	250	238	2,300	2,186	78%
Rockledge	95%	1,450	1,691	1,606	3	75	71	86%				3	75	71	1,766	1,677	87%
Satellite	95%	1,351	1,580	1,501	1	25	24	89%				1	25	24	1,605	1,525	89%
Viera	95%	2,000	2,246	2,134	6	150	143	88%	(1)	(25)	(24)	5	125	119	2,371	2,253	89%
Totals: Central Area		22,967	26,463	25,551	103	2,251	2,184	83%	(2)	(47)	(46)	101	2,204	2,138	28,667	27,689	83%
Central Area Group Totals	Elementary	12,297	13,559	13,559	65	1,318	1,318	83%	(1)	(22)	(22)	64	1,296	1,296	14,855	14,855	83%
	Middle	2,558	3,607	3,246	8	183	165	75%	-	-	-	8	183	165	3,790	3,411	75%
	Jr/Sr High	1,601	1,730	1,557	10	250	225	90%	-	-	-	10	250	225	1,980	1,782	90%
	High	6,511	7,567	7,189	20	500	476	85%	(1)	(25)	(24)	19	475	452	8,042	7,641	85%

School Year 2016-17 Relocatable Classroom Changes

School Capacity and Enrollment Projections by School Area



School Information and Capacity																	
School Information		Student	Permanent		2015-2016 Relocatables			2015-16	Relocatable Changes			2016 - 2017 Relocatables			2016-17 Totals		
School	Utilization Factor	2016 - 2017 Projected Membership	2015-16 Student Stations	Factored Capacity	Class-room Units	2015-16 Student Stations	Factored Capacity	Total Capacity In Use	Class-room Units	Student Stations	Factored Capacity	Class-room Units	Student Stations	Factored Capacity	Total Student Stations	Total Factored Capacity	Total Capacity In Use
	(Note 1)	(Note 2)	(Note 3)	(Note 4)		(Note 3)	(Note 4)	(Note 5)				(Note 6)	(Note 7)	(Note 8)			(Note 9)
North Area																	
Apollo	100%	826	902	902				92%							902	902	92%
Atlantis	100%	586	703	703				83%							703	703	83%
Audubon	100%	662	761	761				87%							761	761	87%
Cape View	100%	421	548	548				77%							548	548	77%
Carroll	100%	634	751	751				84%							751	751	84%
Challenger 7	100%	507	551	551				92%	1	22	22	1	22	22	573	573	89%
Coquina	100%	550	627	627	3	66	66	79%				3	66	66	693	693	79%
Enterprise	100%	529	707	707	1	22	22	73%				1	22	22	729	729	73%
Freedom 7	100%	414	453	453	1	22	22	87%				1	22	22	475	475	87%
Imperial Estates	100%	650	729	729				89%							729	729	89%
Mila	100%	492	707	707				70%							707	707	70%
Mims	100%	538	725	725				74%							725	725	74%
Oak Park	100%	874	888	888	2	44	44	94%				2	44	44	932	932	94%
Pinewood (Note 10)	100%	466	503	503				93%	2	44	44	2	44	44	547	547	85%
Roosevelt	100%	382	599	599				64%							599	599	64%
Stevenson	100%	490	569	569				86%							569	569	86%
Tropical	100%	760	910	910				84%							910	910	84%
Jackson	90%	575	727	654				88%							727	654	88%
Jefferson	90%	610	942	848				72%							942	848	72%
Madison	90%	464	825	743				62%							825	743	62%
Cocoa Beach	90%	1,085	1,253	1,128	15	375	338	74%				15	375	338	1,628	1,466	74%
Edgewood	90%	950	1,100	990	6	91	82	89%				6	91	82	1,191	1,072	89%
Space Coast	90%	1,531	1,975	1,778	2	38	34	84%				2	38	34	2,013	1,812	85%
Astronaut	95%	1,077	1,522	1,446				74%							1,522	1,446	75%
Merritt Island	95%	1,575	1,965	1,867	2	50	48	82%				2	50	48	2,015	1,915	82%
Titusville	95%	1,413	1,970	1,872				75%							1,970	1,872	76%
Totals: North Area		19,061	23,912	22,959	32	708	656	81%	3	66	66	35	774	722	24,686	23,681	81%
North Area Group Totals	Elementary	9,781	11,633	11,633	7	154	154	83%	3	66	66	10	220	220	11,853	11,853	83%
	Middle	1,649	2,494	2,245	-	-	-	73%	-	-	-	-	-	-	2,494	2,245	74%
	Jr/Sr High	3,566	4,328	3,896	23	504	454	82%	-	-	-	23	504	454	4,832	4,350	82%
	High	4,065	5,457	5,185	2	50	48	78%	-	-	-	2	50	48	5,507	5,233	78%

School Year 2016-17 Relocatable Classroom Changes

School Capacity and Enrollment Projections by School Area



School Information and Capacity																	
School Information		Student	Permanent		2015-2016 Relocatables			2015-16	Relocatable Changes			2016 - 2017 Relocatables			2016-17 Totals		
School	Utilization Factor	2016 - 2017 Projected Membership	2015-16 Student Stations	Factored Capacity	Class-room Units	2015-16 Student Stations	Factored Capacity	Total Capacity In Use	Class-room Units	Student Stations	Factored Capacity	Class-room Units	Student Stations	Factored Capacity	Total Student Stations	Total Factored Capacity	Total Capacity In Use
	(Note 1)	(Note 2)	(Note 3)	(Note 4)		(Note 3)	(Note 4)	(Note 5)				(Note 6)	(Note 7)	(Note 8)			(Note 9)

School District Group Totals	Elementary	35,402	39,527	39,527	150	3,124	3,124	83%	2	44	44	152	3,168	3,168	42,695	42,695	83%
	Middle	7,541	10,961	9,865	8	183	165	75%	-	-	-	8	183	165	11,144	10,030	75%
	Jr/Sr High	6,123	7,290	6,562	40	926	834	83%	-	-	-	40	926	834	8,216	7,396	83%
	High	17,916	22,828	21,687	29	725	690	80%	(1)	(25)	(24)	28	700	666	23,528	22,353	80%

School District Grand Totals		66,982	80,606	77,641	227	4,958	4,813	81%	1	19	20	228	4,977	4,833	85,583	82,474	81%
-------------------------------------	--	---------------	---------------	---------------	------------	--------------	--------------	------------	----------	-----------	-----------	------------	--------------	--------------	---------------	---------------	------------

Notes:

- Note 1: Utilization Factors are established by the Florida Department of Education's (FDOE) State Requirements for Educational Facilities (SREF).
- Note 2: Projected Student Membership figures based on Finance 2016-17 Budget Projections combined with Growth Management Projections for 2017-18 to 2020-21
- Note 3: Permanent and Relocatable Student Stations are based on the information contained in the FDOE Florida Inventory of School Houses (FISH) database on 12/01/15
- Note 4: Factored Capacity is calculated by multiplying the Student Stations by the Utilization Factor. Permanent and Relocatable Factored Capacities are calculated independently.
- Note 5: Total Capacity in Use is calculated by dividing the Projected Student Membership by the Total of Permanent Factored Capacity and Relocatable Factored Capacity.
- Note 6: Relocatable Classroom Units are based on the information contained in the FDOE Florida Inventory of School Houses (FISH) database on 12/01/15 plus the projected relocatable classroom changes for School Year 2015-16 (shown in red).
- Note 7: Relocatable Student Stations are based on the information contained in the FDOE Florida Inventory of School Houses (FISH) database on 12/01/15 plus the projected relocatable classroom changes for School Year 2015-16 (shown in red).
- Note 8: Relocatable Factored Capacity is calculated by multiplying Satisfactory Relocatable Student Stations by the Utilization Factor.
- Note 9: Totals are calculated by adding Permanent and Relocatable data.
- Note 10: Pinewood 2016-17 student enrollment projections were reduced by 37 students due to a program change documented on 4/12/2016.

School Year 2016-17 Relocatable Classroom Changes

School Capacity and Enrollment Projections by School Type



School Information and Capacity																	
School Information		Student	Permanent		2015-2016 Relocatables			2015-16	Relocatable Changes			2016 - 2017 Relocatables			2016-17 Totals		
School	Utilization Factor	2016 - 2017 Projected Membership	2015-16 Student Stations	Factored Capacity	Class-room Units	2015-16 Student Stations	Factored Capacity	Total Capacity In Use	Class-room Units	Student Stations	Factored Capacity	Class-room Units	Student Stations	Factored Capacity	Total Student Stations	Total Factored Capacity	Total Capacity In Use
	(Note 1)	(Note 2)	(Note 3)	(Note 4)		(Note 3)	(Note 4)	(Note 5)				(Note 6)	(Note 7)	(Note 8)			(Note 9)
Allen	100%	624	663	663	5	88	88	83%				5	88	88	751	751	83%
Andersen	100%	700	840	840	2	44	44	79%				2	44	44	884	884	79%
Apollo	100%	826	902	902				92%							902	902	92%
Atlantis	100%	586	703	703				83%							703	703	83%
Audubon	100%	662	761	761				87%							761	761	87%
Cambridge	100%	687	649	649	6	116	116	90%				6	116	116	765	765	90%
Cape View	100%	421	548	548				77%							548	548	77%
Carroll	100%	634	751	751				84%							751	751	84%
Challenger 7	100%	507	551	551				92%	1	22	22	1	22	22	573	573	89%
Columbia	100%	556	685	685	3	66	66	74%				3	66	66	751	751	74%
Coquina	100%	550	627	627	3	66	66	79%				3	66	66	693	693	79%
Creel	100%	960	1,088	1,088	3	66	66	83%				3	66	66	1,154	1,154	83%
Croton	100%	657	707	707	4	88	88	83%				4	88	88	795	795	83%
Discovery	100%	626	826	826	7	154	154	64%				7	154	154	980	980	64%
Endeavour	100%	852	852	852	7	138	138	86%				7	138	138	990	990	86%
Enterprise	100%	529	707	707	1	22	22	73%				1	22	22	729	729	73%
Fairglen	100%	701	753	753				93%							753	753	93%
Freedom 7	100%	414	453	453	1	22	22	87%				1	22	22	475	475	87%
Gemini	100%	456	667	667	2	44	44	64%				2	44	44	711	711	64%
Golfview	100%	644	689	689	4	88	88	83%				4	88	88	777	777	83%
Harbor City	100%	432	453	453	8	176	176	69%				8	176	176	629	629	69%
Holland	100%	443	605	605				73%							605	605	73%
Imperial Estates	100%	650	729	729				89%							729	729	89%
Indialantic	100%	746	754	754	2	44	44	93%				2	44	44	798	798	94%
Jupiter	100%	831	780	780	7	150	150	89%				7	150	150	930	930	89%
Lockmar	100%	727	892	892				82%							892	892	82%
Longleaf	100%	626	790	790				79%							790	790	79%
Manatee	100%	845	866	866	7	132	132	85%	(2)	(44)	(44)	5	88	88	954	954	89%
McAuliffe	100%	768	754	754	8	164	164	84%				8	164	164	918	918	84%
Meadowlane Intermediate	100%	1,040	894	894	11	220	220	93%				11	220	220	1,114	1,114	93%
Meadowlane Primary	100%	730	824	824				89%							824	824	89%
Mila	100%	492	707	707				70%							707	707	70%
Mims	100%	538	725	725				74%							725	725	74%
Oak Park	100%	874	888	888	2	44	44	94%				2	44	44	932	932	94%
Ocean Breeze	100%	515	498	498	8	156	156	79%				8	156	156	654	654	79%
Palm Bay	100%	836	829	829	8	176	176	83%				8	176	176	1,005	1,005	83%
Pinewood (Note 10)	100%	466	503	503				93%	2	44	44	2	44	44	547	547	85%
Port Malabar	100%	775	768	768	4	84	84	91%				4	84	84	852	852	91%
Quest	100%	852	910	910	3	40	40	90%				3	40	40	950	950	90%

School Year 2016-17 Relocatable Classroom Changes

School Capacity and Enrollment Projections by School Type



School Information and Capacity																	
School Information		Student	Permanent		2015-2016 Relocatables			2015-16	Relocatable Changes			2016 - 2017 Relocatables			2016-17 Totals		
School	Utilization Factor	2016 - 2017 Projected Membership	2015-16 Student Stations	Factored Capacity	Class-room Units	2015-16 Student Stations	Factored Capacity	Total Capacity In Use	Class-room Units	Student Stations	Factored Capacity	Class-room Units	Student Stations	Factored Capacity	Total Student Stations	Total Factored Capacity	Total Capacity In Use
	(Note 1)	(Note 2)	(Note 3)	(Note 4)		(Note 3)	(Note 4)	(Note 5)				(Note 6)	(Note 7)	(Note 8)			(Note 9)
Riviera	100%	738	689	689	4	88	88	95%				4	88	88	777	777	95%
Roosevelt	100%	382	599	599				64%							599	599	64%
Sabal	100%	573	679	679	5	106	106	73%				5	106	106	785	785	73%
Saturn	100%	779	830	830	6	128	128	81%				6	128	128	958	958	81%
Sea Park	100%	325	439	439				74%							439	439	74%
Sherwood	100%	505	609	609				83%							609	609	83%
Stevenson	100%	490	569	569				86%							569	569	86%
Sunrise	100%	851	895	895				95%							895	895	95%
Suntree	100%	628	689	689	3	66	66	83%				3	66	66	755	755	83%
Surfside	100%	464	439	439	3	62	62	93%	1	22	22	4	84	84	523	523	89%
Tropical	100%	760	910	910				84%							910	910	84%
Turner	100%	707	830	830	2	44	44	81%				2	44	44	874	874	81%
University Park	100%	638	679	679	6	132	132	79%				6	132	132	811	811	79%
West Melbourne	100%	552	618	618				89%							618	618	89%
Westside	100%	691	835	835	1	22	22	81%				1	22	22	857	857	81%
Williams	100%	541	627	627	4	88	88	76%				4	88	88	715	715	76%
Central	90%	1,115	1,694	1,525				73%							1,694	1,525	73%
DeLaura	90%	679	1,068	961				71%							1,068	961	71%
Hoover	90%	496	732	659				75%							732	659	75%
Jackson	90%	575	727	654				88%							727	654	88%
Jefferson	90%	610	942	848				72%							942	848	72%
Johnson	90%	776	1,111	1,000	1	22	20	76%				1	22	20	1,133	1,020	76%
Kennedy	90%	601	749	674	7	161	145	73%				7	161	145	910	819	73%
Madison	90%	464	825	743				62%							825	743	62%
McNair	90%	502	679	611				82%							679	611	82%
Southwest	90%	869	1,308	1,177				74%							1,308	1,177	74%
Stone	90%	854	1,126	1,013				84%							1,126	1,013	84%
Cocoa	90%	1,601	1,730	1,557	10	250	225	90%				10	250	225	1,980	1,782	90%
Cocoa Beach	90%	1,085	1,253	1,128	15	375	338	74%				15	375	338	1,628	1,466	74%
Edgewood	90%	950	1,100	990	6	91	82	89%				6	91	82	1,191	1,072	89%
Space Coast	90%	1,531	1,975	1,778	2	38	34	84%				2	38	34	2,013	1,812	85%
West Shore	90%	956	1,232	1,109	7	172	155	76%				7	172	155	1,404	1,264	76%

School Year 2016-17 Relocatable Classroom Changes

School Capacity and Enrollment Projections by School Type



School Information and Capacity																	
School Information		Student	Permanent		2015-2016 Relocatables			2015-16	Relocatable Changes			2016 - 2017 Relocatables			2016-17 Totals		
School	Utilization Factor	2016 - 2017 Projected Membership	2015-16 Student Stations	Factored Capacity	Class-room Units	2015-16 Student Stations	Factored Capacity	Total Capacity In Use	Class-room Units	Student Stations	Factored Capacity	Class-room Units	Student Stations	Factored Capacity	Total Student Stations	Total Factored Capacity	Total Capacity In Use
	(Note 1)	(Note 2)	(Note 3)	(Note 4)		(Note 3)	(Note 4)	(Note 5)				(Note 6)	(Note 7)	(Note 8)			(Note 9)
Astronaut	95%	1,077	1,522	1,446				74%							1,522	1,446	75%
Bayside	95%	1,646	2,353	2,235				74%							2,353	2,235	74%
Eau Gallie	95%	1,710	2,050	1,948	10	250	238	78%				10	250	238	2,300	2,186	78%
Heritage	95%	1,846	2,436	2,314				80%							2,436	2,314	80%
Melbourne	95%	2,290	2,439	2,317				99%							2,439	2,317	99%
Merritt Island	95%	1,575	1,965	1,867	2	50	48	82%				2	50	48	2,015	1,915	82%
Palm Bay	95%	1,558	2,576	2,447	7	175	166	60%				7	175	166	2,751	2,613	60%
Rockledge	95%	1,450	1,691	1,606	3	75	71	86%				3	75	71	1,766	1,677	87%
Satellite	95%	1,351	1,580	1,501	1	25	24	89%				1	25	24	1,605	1,525	89%
Titusville	95%	1,413	1,970	1,872				75%							1,970	1,872	76%
Viera	95%	2,000	2,246	2,134	6	150	143	88%	(1)	(25)	(24)	5	125	119	2,371	2,253	89%

School District Group Totals	Elementary	35,402	39,527	39,527	150	3,124	3,124	83%	2	44	44	152	3,168	3,168	42,695	42,695	83%
	Middle	7,541	10,961	9,865	8	183	165	75%	-	-	-	8	183	165	11,144	10,030	75%
	Jr/Sr High	6,123	7,290	6,562	40	926	834	83%	-	-	-	40	926	834	8,216	7,396	83%
	High	17,916	22,828	21,687	29	725	690	80%	(1)	(25)	(24)	28	700	666	23,528	22,353	80%

School District Grand Totals	66,982	80,606	77,641	227	4,958	4,813	81%	1	19	20	228	4,977	4,833	85,583	82,474	81%
-------------------------------------	---------------	---------------	---------------	------------	--------------	--------------	------------	----------	-----------	-----------	------------	--------------	--------------	---------------	---------------	------------

Notes:

- Note 1: Utilization Factors are established by the Florida Department of Education's (FDOE) State Requirements for Educational Facilities (SREF).
- Note 2: Projected Student Membership figures based on Finance 2016-17 Budget Projections combined with Growth Management Projections for 2017-18 to 2020-21
- Note 3: Permanent and Relocatable Student Stations are based on the information contained in the FDOE Florida Inventory of School Houses (FISH) database on 12/01/15
- Note 4: Factored Capacity is calculated by multiplying the Student Stations by the Utilization Factor. Permanent and Relocatable Factored Capacities are calculated independently.
- Note 5: Total Capacity in Use is calculated by dividing the Projected Student Membership by the Total of Permanent Factored Capacity and Relocatable Factored Capacity.
- Note 6: Relocatable Classroom Units are based on the information contained in the FDOE Florida Inventory of School Houses (FISH) database on 12/01/15 plus the projected relocatable classroom changes for School Year 2015-16 (shown in red).
- Note 7: Relocatable Student Stations are based on the information contained in the FDOE Florida Inventory of School Houses (FISH) database on 12/01/15 plus the projected relocatable classroom changes for School Year 2015-16 (shown in red).
- Note 8: Relocatable Factored Capacity is calculated by multiplying Satisfactory Relocatable Student Stations by the Utilization Factor.
- Note 9: Totals are calculated by adding Permanent and Relocatable data.
- Note 10: Pinewood 2016-17 student enrollment projections were reduced by 37 students due to a program change documented on 4/12/2016.

Relocatables for School Year 2015-2016

School	Current Total	Non-Class room	Class room	Surplus	Store	DCR	1	2	3	4	5	6	7	8	9	10	11	12	13	14	15	16	17	18	19	20	21	22	23	24	25	26	27	28	29	30	
Satellite High	4	3	1				B052	T115	T116	T248																											
Saturn Elementary	8	1	6		1		T254	N204	T262	T263	T264	T415	T432	N201																							
Sea Park Elementary																																					
Sherwood Elementary																																					
Southwest Middle	4			4			T349	T351	T404	T407																											
Space Coast Jr./Sr. High	23	1	2	20			B051	T214	T219	T212	T216	T217	T218	T220	T221	T222	T223	T224	T225	T226	T227	T228	T229	T230	T231	T233	T343	T346	T348								
Stevenson Elementary																																					
Stone Middle																																					
Sunrise Elementary																																					
Suntree Elementary	4		3	1			T326	T357	T436	B005																											
Surfside Elementary	4		3		1		N203	T282	T437	N182																											
Titusville High	2				2		N038	N045																													
Tropical Elementary																																					
Turner Elementary	2		2				T354	T355																													
University Park Elem	6		6				T320	T350	T352	T358	T403	T406																									
Viera High	6		6				T232	T234	T237	T239	T252	T255																									
West Melbourne Elementary																																					
West Shore Jr./Sr. High	11	2	7		2		B001	B948	N016	T319	T439	T446	T447	T448	T449	N028	N156																				
Westside Elementary	1		1				T108																														
Williams Elementary	9		4	5			N056	N163	N181	N245	N073	N102	N128	N152	N155																						

SCHOOL TOTALS **350** **17** **227** **65** **38** **3**

520 COMPOUND	11	11					B002	N094	N211	N503	N905	N910	N911	N930	N946	N947	TT52																					
Clearlake																																						
Cuyler																																						
ESF																																						
Gardendale	1				1																																	
Gibson Field	1	1					N029																															
Plant Ops and Maint	16	14				2	N050	N134	N176	N193	N199	N213	N242	N505	N908	N912	N918	N927	T001	T020	N130	T013																
McLarty Stadium	3	3					N151	N179	N259																													
Mid-South Area Support	2	2					N248	T017																														
Manatee Bus																																						
Melbourne Bus Compound																																						
North Area Transportation	6	6					N007	N036	N185	N907	N909	N940																										
Riverview																																						
Satellite Bus Compound	5	5					N141	N184	N231	N515	N953																											
South Lake																																						
South Pine Grove																																						
West Melbourne Maint	6	6					LL01	N065	N167	N916	N936	T007																										
Westside Bus Compound	2	2					N920	N923																														
Whispering Hills																																						

NON-SCHOOL TOTALS **53** **50** **0** **0** **1** **2**

GRAND TOTALS **403** **67** **227** **65** **39** **5**

0 Classroom Rated	0 Non-Classroom	0 Surplus Locked in Place	0 Board Approved DCR
0 Storage	B Restroom	B Surplus Restroom	0 DCR'ed /OUT OF FISH/Awaiting Removal

Rick Bellanger
Updated by DGL 4/12/2016

OWNED UNITS

N = 20x36 (720 gsf/ 683 nsf) TYPE VI (Standard)	LL = 20x36 (720 gsf/ 683 nsf) TYPE VI (Mansard Roofs/ SBBC Built)
T = 13x50 (750 gsf/ 620 nsf) TYPE VI (Have Axles)	S = 24x36 State Plans (846 gsf/ 788 nsf) TYPE IV
T100 = 24x36 (846 gsf/ 782 nsf) TYPE IV (Purchased 2002 - 2003)	S200 = 24x36 Stackables (846 gsf/ 788 nsf) TYPE IV (Purchased 2006)
T200-500 = 24x36 (846 gsf/ 788 nsf) TYPE IV (Purchased 2003 - 2006)	B = Bathroom Units TYPE IV (Purchased 2006)

Section 7

Student Enrollment Data

- A. **Brevard Public Schools Feeder System**
 - 1. **2015-2016 Feeder System**
 - 2. **2016-2017 Feeder System**
- B. **Membership 1960-2015 / Projections 2016-2020 (Chart)**
- C. **Actual / Projection School Enrollment Data**



Feeder System

For 2015 - 2016 School Year Enrollment Projections

ASTRONAUT	MADISON 100%	Apollo 5% Mims 93% Oak Park 100% Pinewood 100%
-----------	--------------	---

TITUSVILLE	JACKSON 100%	Apollo 95% Coquina 100% Imperial Estates 100% Mims 7%
------------	--------------	--

SPACE COAST JR/SR HIGH	Atlantis 100% Challenger 7 100% Enterprise 100%
------------------------	---

COCOA JR/SR HIGH	Cambridge 100% Endeavour 57% Fairglen 100% Saturn 83%
------------------	--

MERRITT ISLAND	JEFFERSON 100%	Audubon 100% Carroll 100% Mila 100% Tropical 93%
----------------	----------------	---

ROCKLEDGE	KENNEDY 49%	Andersen 100% Endeavour 4% Golfview 67% Manatee 90% Quest 62% Saturn 2% Williams 14%
	MCNAIR 77%	Endeavour 39% Golfview 33% Manatee 10% Saturn 16% Tropical 7% Williams 86%

EAU GALLIE	JOHNSON 84%	Creel 91% Croton 100% Harbor City 13% Longleaf 100% Sabal 100% Sherwood 77%
	CENTRAL 7%	Discovery 100% Jupiter 61% Lockmar 66% McAuliffe 63% Meadowlane 93% Roy Allen 100% University Park 13%
	HOOVER 6%	Gemini 100% Harbor City 82% Indialantic 100% Ocean Breeze 65% University Park 7%

Schools of Choice Outside the Feeder System	
Freedom 7 Elementary	
Robert Lewis Stevenson Elementary	
West Melbourne Elementary	
EDGEWOOD JR/SR HIGH	
WEST SHORE JR/SR HIGH	

VIERA	DELAURA 43%	Creel 9% Holland 100% Ocean Breeze 35% Quest 38% Roosevelt 23% Sea Park 100% Sherwood 23% Suntree 100% Surfside 100%
	JOHNSON 16%	Creel 91% Croton 100% Harbor City 13% Longleaf 100% Sabal 100% Sherwood 77%
	KENNEDY 51%	Andersen 100% Endeavour 4% Golfview 67% Manatee 90% Quest 62% Saturn 2% Williams 14%
	MCNAIR 23%	Endeavour 39% Golfview 33% Manatee 10% Saturn 16% Tropical 7% Williams 86%

SATELLITE	DELAURA 57%	Creel 9% Holland 100% Ocean Breeze 35% Quest 38% Roosevelt 23% Sea Park 100% Sherwood 23% Suntree 100% Surfside 100%
	HOOVER 18%	Gemini 100% Harbor City 82% Indialantic 100% Ocean Breeze 65% University Park 7%

BAYSIDE	SOUTHWEST 65%	Columbia 86% Jupiter 39% Lockmar 34% McAuliffe 37% Port Malabar 2% Sunrise 90% Turner 99% Westside 100%
	STONE 5%	Columbia 14% Harbor City 5% Meadowlane 7% Palm Bay Elem 100% Port Malabar 98% Riviera 100% Sunrise 10% Turner 1% University Park 80%

COCOA BEACH JR/SR HIGH	Cape View 100% Roosevelt 77%
------------------------	---------------------------------

PALM BAY	STONE 78%	Columbia 14% Harbor City 5% Meadowlane 7% Palm Bay Elem 100% Port Malabar 98% Riviera 100% Sunrise 10% Turner 1% University Park 80%
	SOUTHWEST 16%	Columbia 86% Jupiter 39% Lockmar 34% McAuliffe 37% Port Malabar 2% Sunrise 90% Turner 99% Westside 100%
	CENTRAL 5%	Discovery 100% Jupiter 61% Lockmar 66% McAuliffe 63% Meadowlane 93% Roy Allen 100% University Park 13%

HERITAGE	CENTRAL 53%	Discovery 100% Jupiter 61% Lockmar 66% McAuliffe 63% Meadowlane 93% Roy Allen 100% University Park 13%
	SOUTHWEST 19%	Columbia 86% Jupiter 39% Lockmar 34% McAuliffe 37% Port Malabar 2% Sunrise 90% Turner 99% Westside 100%

MELBOURNE	HOOVER 76%	Gemini 100% Harbor City 82% Indialantic 100% Ocean Breeze 65% University Park 7%
	CENTRAL 35%	Discovery 100% Jupiter 61% Lockmar 66% McAuliffe 63% Meadowlane 93% Roy Allen 100% University Park 13%
	STONE 18%	Columbia 14% Harbor City 5% Meadowlane 7% Palm Bay Elem 100% Port Malabar 98% Riviera 100% Sunrise 10% Turner 1% University Park 80%

Feeder System

For 2016 - 2017 School Year Enrollment Projections

ASTRONAUT	MADISON 100%	Apollo 4% Mims 97% Oak Park 100% Pinewood 100%
-----------	--------------	---

TITUSVILLE	JACKSON 100%	Apollo 96% Coquina 100% Imperial Estates 100% Mims 3%
------------	--------------	--

SPACE COAST JR/SR HIGH	Atlantis 100% Challenger 7 100% Enterprise 100%
------------------------	---

COCOA JR/SR HIGH	Cambridge 100% Endeavour 60% Fairglen 100% Saturn 76%
------------------	--

MERRITT ISLAND	JEFFERSON 100%	Audubon 100% Carroll 100% Mila 100% Tropical 88%
----------------	----------------	---

ROCKLEDGE	KENNEDY 56%	Andersen 100% Endeavour 4% Golfview 66% Manatee 85% Quest 61% Saturn 2% Williams 19%
	MCNAIR 84%	Endeavour 35% Golfview 34% Manatee 15% Saturn 22% Tropical 12% Williams 81%

EAU GALLIE	JOHNSON 86%	Creel 88% Croton 100% Harbor City 12% Longleaf 100% Sabal 100% Sherwood 69%
	CENTRAL 6%	Discovery 100% Jupiter 67% Lockmar 70% McAuliffe 67% Meadowlane 94% Roy Allen 100% University Park 14%
	HOOVER 6%	Gemini 100% Harbor City 75% Indialantic 100% Ocean Breeze 70% University Park 17%

Schools of Choice Outside the Feeder System	
Freedom 7 Elementary	
Robert Lewis Stevenson Elementary	
West Melbourne Elementary	
EDGEWOOD JR/SR HIGH	
WEST SHORE JR/SR HIGH	

VIERA	DELAURA 40%	Creel 12% Holland 100% Ocean Breeze 30% Quest 39% Roosevelt 28% Sea Park 100% Sherwood 31% Suntree 100% Surfside 100%
	JOHNSON 14%	Creel 88% Croton 100% Harbor City 12% Longleaf 100% Sabal 100% Sherwood 69%
	KENNEDY 44%	Andersen 100% Endeavour 4% Golfview 66% Manatee 85% Quest 61% Saturn 2% Williams 19%
	MCNAIR 16%	Endeavour 35% Golfview 34% Manatee 15% Saturn 22% Tropical 12% Williams 81%

SATELLITE	DELAURA 60%	Creel 12% Holland 100% Ocean Breeze 30% Quest 39% Roosevelt 28% Sea Park 100% Sherwood 31% Suntree 100% Surfside 100%
	HOOVER 17%	Gemini 100% Harbor City 75% Indialantic 100% Ocean Breeze 70% University Park 17%

BAYSIDE	SOUTHWEST 60%	Columbia 87% Jupiter 33% Lockmar 30% McAuliffe 33% Port Malabar 5% Sunrise 88% Turner 100% Westside 100%
	STONE 8%	Columbia 13% Harbor City 13% Meadowlane 6% Palm Bay Elem 100% Port Malabar 95% Riviera 100% Sunrise 12% Turner 0% University Park 69%

COCOA BEACH JR/SR HIGH	Cape View 100% Roosevelt 72%
------------------------	---------------------------------

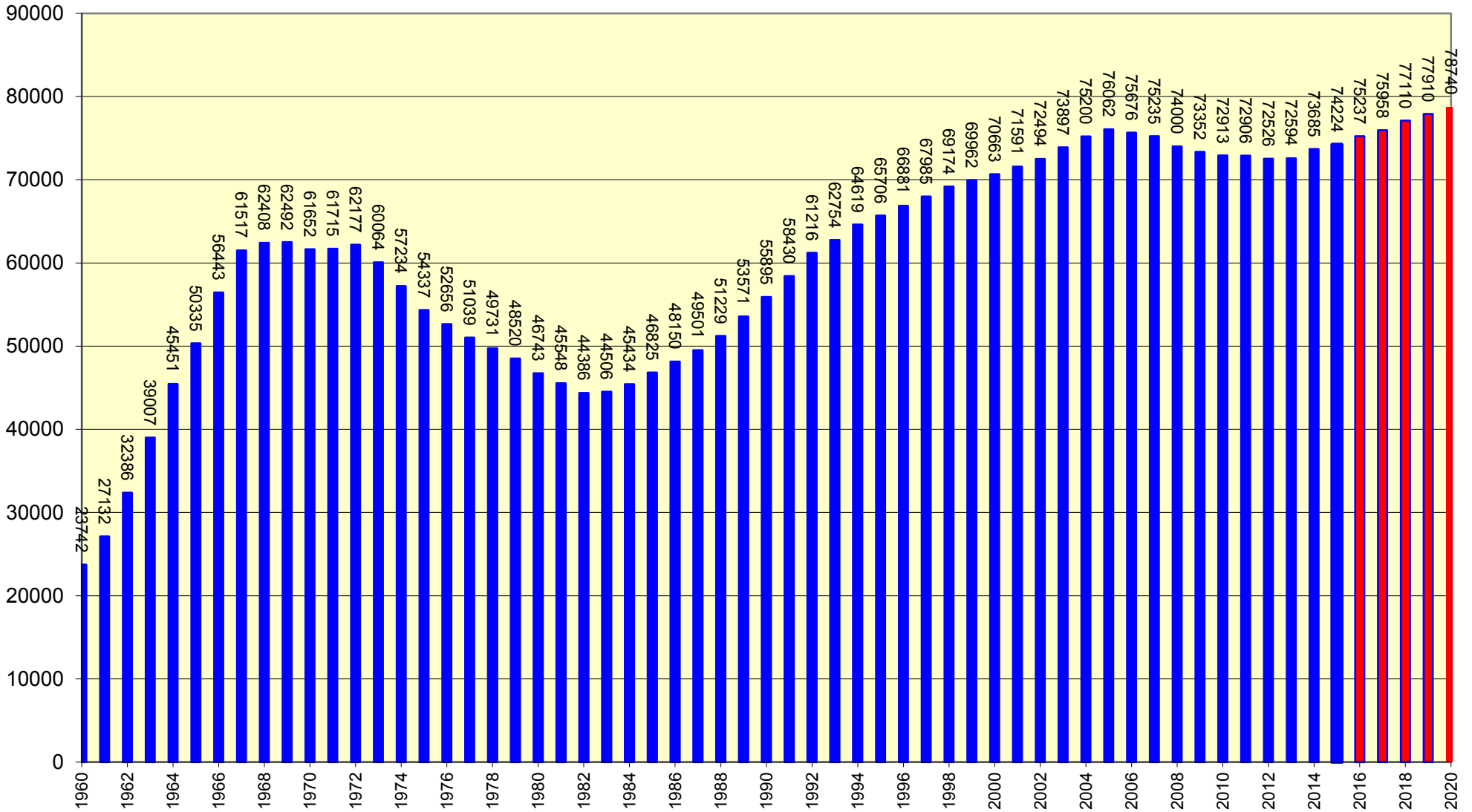
PALM BAY	STONE 73%	Columbia 13% Harbor City 13% Meadowlane 6% Palm Bay Elem 100% Port Malabar 95% Riviera 100% Sunrise 12% Turner 0% University Park 69%
	SOUTHWEST 22%	Columbia 87% Jupiter 33% Lockmar 30% McAuliffe 33% Port Malabar 5% Sunrise 88% Turner 100% Westside 100%
	CENTRAL 6%	Discovery 100% Jupiter 67% Lockmar 70% McAuliffe 67% Meadowlane 94% Roy Allen 100% University Park 14%

HERITAGE	CENTRAL 49%	Discovery 100% Jupiter 67% Lockmar 70% McAuliffe 67% Meadowlane 94% Roy Allen 100% University Park 14%
	SOUTHWEST 17%	Columbia 87% Jupiter 33% Lockmar 30% McAuliffe 33% Port Malabar 5% Sunrise 88% Turner 100% Westside 100%

MELBOURNE	HOOVER 77%	Gemini 100% Harbor City 75% Indialantic 100% Ocean Breeze 70% University Park 17%
	CENTRAL 39%	Discovery 100% Jupiter 67% Lockmar 70% McAuliffe 67% Meadowlane 94% Roy Allen 100% University Park 14%
	STONE 19%	Columbia 13% Harbor City 13% Meadowlane 6% Palm Bay Elem 100% Port Malabar 95% Riviera 100% Sunrise 12% Turner 0% University Park 69%

Total Public School Membership 1960 - 2015

Projected Membership Fall 2016 to 2020



Membership Projections: Combined BPS Finance and Facilities

Students in Brevard County Public Schools

Actual Students for School Years 2004 - 2015

Projected Students for 2016-17 -- 2020-21

School	Actual Membership for Fall of Year												Projected Student Membership				
	2004	2005	2006	2007	2008	2009	2010	2011	2012	2013	2014	2015	2016	2017	2018	2019	2020
South Area																	
Allen	742	775	819	768	706	665	545	504	577	595	623	605	624	610	611	612	595
Columbia	642	620	581	553	601	550	610	705	693	615	570	577	556	550	544	533	511
Discovery	938	965	960	1,031	998	939	719	744	689	720	709	634	626	615	594	568	559
Gemini	642	602	593	588	607	631	610	564	536	510	503	483	456	429	431	427	422
Harbor City	491	463	415	465	430	471	437	441	440	451	400	434	432	421	418	411	389
Indialantic	799	818	785	764	745	779	755	725	744	756	762	753	746	732	733	712	715
Jupiter	794	791	792	851	824	806	719	793	843	795	844	810	831	846	877	866	872
Lockmar	866	759	746	713	748	787	695	734	781	770	786	721	727	709	690	664	638
McAuliffe	868	878	917	920	913	824	762	763	780	769	741	744	768	774	787	775	765
Meadowlane Intermediate				519	505	556	973	1,076	900	890	929	1,003	1,040	1,035	1,041	977	931
Meadowlane Primary	893	961	975	694	700	725	752	778	737	779	780	740	730	723	703	695	692
Palm Bay	715	689	706	716	696	702	803	816	848	850	859	815	836	808	803	777	724
Port Malabar	826	773	769	742	743	715	655	687	752	755	772	761	775	765	767	747	715
Riviera	701	631	626	564	587	575	644	709	758	727	715	690	738	791	833	829	794
Sunrise			550	726	770	846	748	777	756	727	846	844	851	876	872	855	858
Turner	682	745	693	765	734	696	664	741	772	715	760	689	707	691	683	657	608
University Park	533	559	597	553	565	517	518	585	628	675	634	617	638	699	777	791	790
West Melbourne	410	415	411	414	414	414	431	447	545	551	547	551	552	552	552	552	552
Westside	1,153	1,245	773	825	844	839	779	821	756	803	769	700	691	647	609	543	485
Central	1,353	1,234	1,172	1,003	966	969	1,096	1,270	1,263	1,278	1,237	1,142	1,115	1,165	1,184	1,266	1,337
Hoover	550	512	481	467	449	438	519	543	568	554	564	507	496	564	539	540	559
Southwest	1,416	1,439	1,463	1,428	1,372	1,352	1,016	1,023	993	966	905	882	869	871	835	944	1,049
Stone	689	726	683	665	665	662	754	774	802	816	784	836	854	919	979	1,032	1,211
West Shore	953	955	940	955	961	967	961	964	955	961	957	957	956	956	956	956	956
Bayside	2,232	2,380	2,580	2,752	2,760	2,195	1,930	1,665	1,606	1,628	1,643	1,687	1,646	1,611	1,649	1,631	1,671
Heritage						932	1,327	1,759	1,797	1,795	1,825	1,851	1,846	1,822	1,819	1,804	1,830
Melbourne	2,325	2,291	2,342	2,274	2,190	1,981	1,997	1,967	1,945	2,013	2,131	2,227	2,290	2,220	2,263	2,335	2,352
Palm Bay	2,605	2,621	2,577	2,529	2,324	2,108	1,893	1,739	1,587	1,555	1,599	1,570	1,558	1,683	1,727	1,836	1,865
Totals: South Area	24,818	24,847	24,946	25,244	24,817	24,641	24,312	25,114	25,051	25,019	25,194	24,830	24,954	25,084	25,276	25,335	25,445
South Area Group Totals	12,695	12,689	12,708	13,171	13,130	13,037	12,819	13,410	13,535	13,453	13,549	13,171	13,324	13,273	13,325	12,991	12,615
	4,008	3,911	3,799	3,563	3,452	3,421	3,385	3,610	3,626	3,614	3,490	3,367	3,334	3,519	3,537	3,782	4,156
	953	955	940	955	961	967	961	964	955	961	957	957	956	956	956	956	956
	7,162	7,292	7,499	7,555	7,274	7,216	7,147	7,130	6,935	6,991	7,198	7,335	7,340	7,336	7,458	7,606	7,718

Students in Brevard County Public Schools

Actual Students for School Years 2004 - 2015

Projected Students for 2016-17 -- 2020-21

School	Actual Membership for Fall of Year												Projected Student Membership				
	2004	2005	2006	2007	2008	2009	2010	2011	2012	2013	2014	2015	2016	2017	2018	2019	2020
Central Area																	
Andersen	683	638	638	640	696	717	756	738	771	751	714	705	700	711	731	741	763
Cambridge	614	612	570	502	510	536	543	564	583	620	637	666	687	678	673	664	642
Creel	948	989	873	819	760	759	930	900	946	941	972	931	960	977	1,012	996	996
Croton	601	588	568	537	515	516	585	597	629	676	653	665	657	669	707	709	721
Endeavour	545	531	554	551	588	581	747	798	843	816	808	836	852	885	892	880	858
Fairglen	769	818	769	716	714	732	694	667	679	714	689	691	701	670	661	653	654
Gardendale	634	608	524	487	474	447	430	449	492								
Golfview	585	584	607	635	634	630	653	661	640	648	675	647	644	642	642	655	655
Holland	439	424	415	418	416	378	413	420	394	415	427	432	443	443	431	421	406
Longleaf	821	749	683	696	686	705	737	708	654	609	599	631	626	616	633	612	594
Manatee	859	826	832	827	967	1,018	874	911	940	850	836	846	845	823	833	866	895
Ocean Breeze	607	622	571	561	547	536	555	560	545	531	510	532	515	544	566	563	566
Quest	470	646	740	858	855	849	857	842	861	711	774	848	852	954	1,121	1,264	1,339
Sabal	543	574	571	573	587	573	602	580	601	609	585	565	573	584	606	605	613
Saturn	751	767	731	740	702	736	792	797	829	738	748	785	779	774	762	776	779
Sea Park	391	353	293	301	300	305	310	354	393	321	343	330	325	333	333	329	322
Sherwood	701	698	667	638	608	594	524	515	515	530	544	518	505	521	530	538	553
Suntree	905	862	815	806	828	827	679	697	644	622	629	649	628	610	595	577	577
Surfside	478	463	419	403	398	437	400	391	383	389	418	449	464	465	467	457	464
Williams	792	805	805	812	805	796	583	602	603	552	538	559	541	542	537	522	502
Clearlake	536	497	434	418	449	405	396	422	470								
DeLaura	824	761	703	689	711	667	651	706	803	741	699	686	679	723	767	849	850
Johnson	1,044	1,011	1,012	962	946	894	860	836	794	796	787	785	776	827	818	847	917
Kennedy	670	644	626	636	677	712	740	718	643	614	608	608	601	663	664	698	756
McNair	408	447	490	572	510	471	488	558	563	494	457	472	502	511	504	521	505
Cocoa	1,387	1,317	1,272	1,193	1,114	1,434	1,366	1,382	1,436	1,458	1,531	1,498	1,601	1,665	1,724	1,801	1,892
Eau Gallie	2,420	2,390	2,081	1,953	1,736	1,694	1,654	1,599	1,675	1,682	1,714	1,713	1,710	1,706	1,745	1,820	1,847
Rockledge	1,728	1,786	1,559	1,421	1,238	1,204	1,242	1,269	1,377	1,372	1,374	1,447	1,450	1,526	1,630	1,690	1,690
Satellite	2,100	2,057	1,669	1,450	1,259	1,200	1,165	1,169	1,272	1,290	1,319	1,345	1,351	1,309	1,316	1,286	1,334
Viera			918	1,424	1,941	2,026	2,117	2,237	2,022	1,976	2,032	2,002	2,000	2,049	2,205	2,392	2,512
Totals: Central Area	24,253	24,067	23,409	23,238	23,171	22,974	22,947	23,225	24,000	22,466	22,620	22,841	22,967	23,420	24,105	24,732	25,202
Central Area Group Totals	13,136	13,157	12,645	12,520	12,590	12,672	12,664	12,751	12,945	12,043	12,099	12,285	12,297	12,441	12,732	12,828	12,899
	2,946	2,863	2,831	2,859	2,844	2,744	2,739	2,818	2,803	2,645	2,551	2,551	2,558	2,724	2,753	2,915	3,028
	1,387	1,317	1,272	1,193	1,114	1,434	1,366	1,382	1,436	1,458	1,531	1,498	1,601	1,665	1,724	1,801	1,892
	6,248	6,233	6,227	6,248	6,174	6,124	6,178	6,274	6,346	6,320	6,439	6,507	6,511	6,590	6,896	7,188	7,383

Students in Brevard County Public Schools

Actual Students for School Years 2004 - 2015

Projected Students for 2016-17 -- 2020-21

School	Actual Membership for Fall of Year												Projected Student Membership				
	2004	2005	2006	2007	2008	2009	2010	2011	2012	2013	2014	2015	2016	2017	2018	2019	2020
North Area																	
Apollo	906	852	730	722	711	761	746	733	710	803	766	857	826	851	882	919	913
Atlantis	800	816	778	765	762	687	639	640	614	568	618	582	586	569	567	538	528
Audubon	682	672	657	635	574	475	496	532	473	670	646	644	662	649	634	622	598
Cape View	388	363	369	376	363	361	387	370	379	372	382	426	421	430	438	421	424
Carroll	910	915	886	845	789	742	670	675	657	633	620	638	634	631	639	639	654
Challenger 7	606	549	525	494	496	489	483	500	486	508	480	514	507	489	482	470	463
Coquina	455	459	449	439	405	431	468	520	555	570	569	553	550	568	607	622	637
Enterprise	910	897	867	904	831	769	680	675	607	569	539	539	529	491	441	402	349
Freedom 7	431	425	420	412	414	413	403	414	410	404	407	413	414	414	414	414	414
Imperial Estates	559	613	668	682	646	653	680	630	641	652	664	650	650	679	725	736	765
Mila	441	407	403	365	384	420	512	516	517	481	496	495	492	509	520	505	494
Mims	612	615	576	531	522	489	468	448	479	602	582	517	538	542	563	537	540
Oak Park	831	764	744	750	705	664	646	609	686	825	847	856	874	881	866	853	856
Pinewood	382	413	433	421	430	405	400	353	379	431	442	479	503	527	560	584	602
Riverview Elementary	439	531	497	470	453	405	320	297									
Roosevelt	514	517	514	462	408	413	443	439	414	409	371	375	382	405	433	438	443
South Lake Elementary	452	499	471	454	472	406	388	399	507								
Stevenson	270	259	261	427	449	464	480	484	489	485	483	489	490	490	490	490	490
Tropical	853	857	819	760	740	712	690	668	643	674	736	766	760	741	747	730	720
Jackson	677	643	686	656	590	636	632	623	568	538	595	578	575	574	611	654	708
Jefferson	711	734	712	699	689	673	685	643	623	643	651	615	610	610	660	700	727
Madison	710	688	665	660	586	579	548	484	497	514	470	438	464	470	501	543	529
Cocoa Beach	1,504	1,543	1,551	1,528	1,470	1,402	1,383	1,389	1,246	1,164	1,127	1,102	1,085	1,085	1,085	1,085	1,085
Edgewood	680	807	952	946	943	948	944	942	930	940	941	949	950	950	950	950	950
Space Coast	1,844	2,171	2,168	2,161	1,962	1,833	1,742	1,650	1,552	1,498	1,528	1,474	1,531	1,504	1,450	1,466	1,483
Astronaut	1,578	1,482	1,404	1,382	1,309	1,228	1,153	1,171	1,128	1,144	1,137	1,108	1,077	1,050	1,035	1,032	1,081
Merritt Island	1,764	1,697	1,590	1,569	1,545	1,505	1,483	1,508	1,501	1,499	1,594	1,545	1,575	1,585	1,508	1,510	1,541
Titusville	1,770	1,590	1,567	1,482	1,398	1,425	1,391	1,386	1,282	1,322	1,326	1,393	1,413	1,411	1,443	1,413	1,433
Totals: North Area	22,679	22,778	22,362	21,997	21,046	20,388	19,960	19,698	18,973	18,918	19,017	18,995	19,098	19,105	19,251	19,273	19,427
North Area Group Totals	11,441	11,423	11,067	10,914	10,554	10,159	9,999	9,902	9,646	9,656	9,648	9,793	9,818	9,866	10,008	9,920	9,890
	2,098	2,065	2,063	2,015	1,865	1,888	1,865	1,750	1,688	1,695	1,716	1,631	1,649	1,654	1,772	1,897	1,964
	4,028	4,521	4,671	4,635	4,375	4,183	4,069	3,981	3,728	3,602	3,596	3,525	3,566	3,539	3,485	3,501	3,518
	5,112	4,769	4,561	4,433	4,252	4,158	4,027	4,065	3,911	3,965	4,057	4,046	4,065	4,046	3,986	3,955	4,055

Students in Brevard County Public Schools

Actual Students for School Years 2004 - 2015

Projected Students for 2016-17 -- 2020-21

School	Actual Membership for Fall of Year												Projected Student Membership				
	2004	2005	2006	2007	2008	2009	2010	2011	2012	2013	2014	2015	2016	2017	2018	2019	2020
School District Group Totals	37,272	37,269	36,420	36,605	36,274	35,868	35,482	36,063	36,126	35,152	35,296	35,249	35,439	35,580	36,065	35,739	35,404
	9,052	8,839	8,693	8,437	8,161	8,053	7,989	8,178	8,117	7,954	7,757	7,549	7,541	7,897	8,062	8,594	9,148
	6,368	6,793	6,883	6,783	6,450	6,584	6,396	6,327	6,119	6,021	6,084	5,980	6,123	6,160	6,165	6,258	6,366
	18,522	18,294	18,287	18,236	17,700	17,498	17,352	17,469	17,192	17,276	17,694	17,888	17,916	17,972	18,340	18,749	19,156
School District Grand Totals	71,750	71,692	70,717	70,479	69,034	68,003	67,219	68,037	68,024	66,403	66,831	66,666	67,019	67,609	68,632	69,340	70,074
District-Owned School Totals	71,750	71,692	70,717	70,479	69,034	68,003	67,219	68,037	68,024	66,403	66,831	66,666	67,019	67,609	68,632	69,340	70,074
Year-to-Year Change		(58)	(975)	(238)	(1,445)	(1,031)	(784)	818	(13)	(1,634)	(1,193)	(165)	188	590	1,023	708	734
Percentage Change		-0.08%	-1.36%	-0.34%	-2.05%	-1.49%	-1.15%	1.22%	-0.02%	-2.40%	-1.75%	-0.25%	0.28%	0.88%	1.51%	1.03%	1.06%

Students in Brevard County Public Schools

Actual Students for School Years 2004 - 2015

Projected Students for 2016-17 -- 2020-21

School	Actual Membership for Fall of Year												Projected Student Membership				
	2004	2005	2006	2007	2008	2009	2010	2011	2012	2013	2014	2015	2016	2017	2018	2019	2020
2013-14 Special Schools and Centers																	
NORTH/CENTRAL ALC	54	66	52	33	47	66	43	34	54	57	69	44	50	51	43	46	38
SOUTH ALC	92	121	103	97	77	91	108	70	61	60	65	44	37	32	32	30	30
NORTH ALC	47	45	43	32	41	31	31	40	32								
BREVARD COUNTY JAIL									6	5	5	8	10	9	10	13	14
BREVARD VIRTUAL INSTRUCTION						41	100	132	148	131	128	121	125	114	107	97	86
CENTER FOR DRUG FREE LIVING	18	21	19	29	27	30	30	27	26	25	28	30	30	34	35	34	34
CROSSWINDS	8	12	17	9	13	11	6	8									
DETENTION CENTER	68	65	43	59	44	35	24	28	13	29	37	40	43	52	54	64	63
DEVEREUX HOSPITAL	58	35	51	37	29	39	40	39	36	43	63	40	39	36	37	39	40
FIELDSTON PREPARATORY SCHL	72	85	69	62	59	71	73	76	62	57	106	109	110	122	136	161	196
FRANCIS WALKER HALFWAY HOUSE	19	21	24	30	28	30	29	28	18	20	27	18	23	22	17	20	21
INFANTS & TODDLERS	125	155	166	252	369	493	427	368	290	228	273	257	270	240	273	257	261
HORACE MANN ACADEMY	141	161	126	119	117	114	112	131	119	111							
HOME EDUCATION	20	48	27	28	51	39	50	29	60	58	73	112	54	89	96	59	97
MCKAY SCHOLARSHIPS	437	501	544	751	848	895	993	1,081	1,237	1,293	1,310	1,385	1,449	1,527	1,572	1,631	1,670
OUTWARD BOUND	17	20	13	20	11	14	21	15	18	8	13	11	15	11	10	12	11
PROJECT SEARCH								27	28	19	42	41	41	30	42	32	26
RIVERDALE COUNTRY SCHL	132	149	161	144	119	116	120	116	115	105	141	112	115	99	95	87	75
RIVERVIEW SCHOOL									66	110	133	132	146	121	133	123	117
SPACE COAST MARINE	25	31	33	34	37	33	33	34	20								
SOUTH AREA HEAD START									33	33	33	32	36	33	33	32	33
MELBOURNE CENTER FOR PERSONAL GROWTH										26	28	29	30	32	26	17	23
Totals: 2013-14 Special Schools and Centers	1,333	1,536	1,493	1,736	1,917	2,149	2,240	2,283	2,442	2,418	2,574	2,565	2,623	2,654	2,751	2,754	2,835

Students in Brevard County Public Schools

Actual Students for School Years 2004 - 2015

Projected Students for 2016-17 -- 2020-21

School	Actual Membership for Fall of Year												Projected Student Membership				
	2004	2005	2006	2007	2008	2009	2010	2011	2012	2013	2014	2015	2016	2017	2018	2019	2020
2013-14 Public Charter Schools																	
CAMPUS CHARTER	169	224	171	154	132	125	152	138	140	142	134	135	135	140	140	135	137
EDUC. HORIZONS W. MELBOURNE	73	80	72	60	73	68	93	99	92	97	100	109	125	123	125	123	116
EMMA JEWEL ACADEMY										202	300	317	329	371	383	417	421
IMAGINE SCHOOLS					407	628	673	402	218	174	217	246	262	232	216	194	175
LEGACY CHARTER													225	225	225	225	225
ODYSSEY	367	517	508	522	544	550	565	623	762	911	940	1,026	1,165	1,144	1,161	1,213	1,261
ODYSSEY PREP CHARTER ACADEMY										179	234	266	334	363	389	422	409
PALM BAY ACADEMY	221	269	369	403	544	527	509	580	518	559	621	623	630	630	630	630	630
PALM BAY MUNICIPAL K-8			779	996	746	646	734										
PALM BAY MUNICIPAL HS						16	73										
ROYAL PALM	115	125	120	186	185	195	216	253	281	334	354	344	350	349	345	343	341
SCULPTOR	364	395	392	399	418	445	469	491	518	531	542	545	546	540	535	536	538
VIERA CHARTER										644	838	961	960	960	960	960	960
PINEAPPLE COVE ACADEMY												421	534	618	618	618	618
Totals: 2013-14 Public Charter Schools	1,309	1,610	2,411	2,720	3,049	3,200	3,484	2,586	2,529	3,773	4,280	4,993	5,595	5,695	5,727	5,816	5,831

Section 8

Facilities Planning



Components of Facilities Planning

Introduction

The Facilities Services Planning Department is responsible for ensuring that adequate and appropriate facilities are available for the students, their teachers, administrators and support staff. The most important planning goals are to utilize existing capacity efficiently while ensuring that there are no schools over capacity.

The planning staff forecasts 1-year, 5-year, 10-year and 20-year plans for Public School facilities. Some of these forecasts are required by Florida Statute and must be submitted for approval to the Florida Department of Education (FDOE). Others, in particular the Student Accommodation Plan (SAP), are not required by the FDOE but are an integral part of the District's planning process.

A. Educational Plant Survey (EPS)

The EPS is a document containing all of the facility improvements (new construction and remodeling/renovation of existing space) that have been approved by the Florida Department of Education (FDOE). It is also the basis of the District's annual Five Year Facilities Work Plan. The purpose of the EPS is to document the facility needs of the School District on a school-by-school basis and to identify which capital projects may be initiated. By statute, a new EPS supersedes all previous Surveys. Recommendations in the previous Survey that have not been implemented are not eligible for the expenditure of state capital outlay funds unless recommended in the new Survey. The EPS must be prepared and submitted for approval every five years at a minimum, but intermediate updates, called "spot surveys" may be submitted at any time in order to obtain FDOE approvals for changes to the plan. Brevard County's current EPS was approved by the FDOE on January 7, 2011 with Spot Survey #1 approved on November 5, 2013 and Spot Survey #2 approved on February 19, 2014. It is important to note that facility improvements must be contained in the approved EPS in order to finance the improvement with any "state" funds (Public Education Capital Outlay or PECO, and 1.5-mil local tax dollars). Improvements funded with locally generated revenue – impact fees, sales tax, local bonds – do not have to be in the approved EPS.

B. Five Year District Facilities Work Plan

The Five Year District Facilities Work Plan, often referred to as the "Five Year Plan", must be updated and submitted annually to the FDOE for approval by October 1 of each year. This document includes all of the facility improvements (new construction, remodeling/renovation of existing space and maintenance) that the District plans to



undertake in the next five (5) years, with long range projections for ten (10) years and twenty (20) years. All facility improvements contained in the Five Year Work Plan must be included in the currently-approved EPS in order to finance the improvement with state funds. Again, improvements funded with locally generated revenue (impact fees, sales tax, local bonds) do not have to be contained in the approved EPS.

C. Student Accommodation Plan

The Student Accommodation Plan (SAP) is normally prepared by the Facilities Planning staff every spring, with approval by the School Board in late spring. The School Board of Brevard County has adopted this document, which compares projected student enrollment to projected school capacities, as a planning tool for the following school year. After the plan is approved, it is implemented throughout the district.

The information compiled in the preparation of this document comes from several different sources. Facilities Services, in partnership with Financial Services, provides the data related to projected student enrollment for the School District. Facilities Services provides the permanent and relocatable school capacities from the Florida Inventory of School Houses (FISH) Database. School Principals and Area Superintendents estimate their need for space to accommodate students based on the programs and membership projections for the following year. After the Senior Staff evaluates the information, recommendations are provided to the Superintendent and to the School Board for approval.

D. Student Membership Projections

Student membership projections are an essential component of facilities planning. The Membership Projection Process begins in October of each year to develop student projections for the following school year.

Financial Services develops student membership projections for the next school year based on trend analyses of cohort survival data and feeder chains. These preliminary projections are modified based on input from the School Principals and Area Superintendents, then finalized at an Enrollment Projection Management Conference. The final projections are submitted to the FDOE for budgeting purposes.

Facilities Services uses geospatial analysis of the local government development data, birth rate data, mobility rates and matriculation rates to calculate student membership projections for the next ten (10) years. Further analysis takes into account any potential redistricting or grandfathered students from previous redistricting.

A five year student enrollment projection is then created by using the Financial Services projections for the next school year, then indexing the Facilities Services projections for the following four years. This unified set of projections is used for all School District purposes (including FDOE reporting and school concurrency).



School Board of Brevard County

FY 2016-2017 Student Accommodation Plan



These projections may be modified in the spring to reflect any changes due to redistricting, but the total number of students forecast will remain the same since that figure was provided to the FDOE in December to determine the District's budget for the next fiscal year.

E. School Capacity

The determination of school capacity impacts almost every aspect of district operations including:

1. Planning of new schools and additions
2. Renovations and upgrades to existing schools
3. Establishing attendance boundaries
4. Allocation of relocatable classrooms
5. Providing classrooms for special programs such as exceptional education classes (ESE), and magnet programs

For Brevard Public Schools, capacity assessments utilize the Florida Inventory of School Houses (FISH), which is based on the Florida Department of Education (FDOE) formulas and allowances. However, other measures relative to capacity play important roles in decisions that affect facility planning. These include **Program Capacity**, **Level of Service (LOS)**, and legislative amendments such as **Class Size Reduction**.

1. **FISH Capacity:** The Florida Inventory of School Houses (FISH) is the database used by the Department of Education for all parcels, buildings, and rooms in Florida public educational facilities. FISH capacity is the number of students that may be housed in a facility at any given time, based upon the number of existing satisfactory student stations. The FISH system includes both permanent student stations and relocatable student stations.

When a school is built, its spaces are assigned a design code; each design code carries either a fixed number of student stations or a number that may vary for common areas like gymnasiums depending on the total capacity of the school. Factored Permanent FISH Capacity is the permanent capacity of the school (relocatables not included) multiplied by a "utilization factor" established by the Florida Department of Education's (FDOE) State Requirements for Educational Facilities (SREF). This reduction is essentially an adjustment for operational realities that prevent all classrooms from being used at the maximum capacity at all times during the day. Brevard Utilization Factors are:

Elementary Utilization Factor	1.00
Middle Utilization Factor	0.90
Jr./Sr. High Utilization Factor	0.90
Senior High Utilization Factor	0.95



School Board of Brevard County

FY 2016-2017 Student Accommodation Plan



2. **Program Capacity:** Program capacity is the “effective capacity” of a school. School program capacity is smaller than the FISH capacity because some programs will have a maximum number of students that is less than the capacity of the space in which they are held. For example, a 7th grade classroom may have 22 student stations in FISH and a factored capacity of 90%, or 20, but it may be used for an ESE program that is allowed a maximum number of 10 students. Effectively the school’s program capacity is 10 students less than its permanent capacity. If there are only 5 students in the school with that exceptionality, however, utilization of that space would be 23% or 5/22. It simply isn’t possible to fill the space with children who do not have that exceptionality. While program capacity is variable and can change regularly based on the program offerings and use of classrooms, FISH limits the number of “program-related” student stations at a given school, largely based upon total student stations. Currently, more than 20,000 K-12 students participate in special, alternative and/or supplemental education programs that are offered by Brevard Public Schools. These programs vary from gifted programs to programs for school-aged teen parents, and are created and terminated at the discretion of the School Board. The number of students in these programs, where the programs are instituted, and how they are integrated within existing spaces are key elements that must be part of the planning process.

3. **Level of Service (LOS):** Level of Service (LOS) is not a measurement of capacity, but rather the target utilization of facilities. LOS is a relatively new component in school planning, and is associated with the advent of the recent growth management legislation. The Interlocal Agreement (ILA) for Public School Facility Planning and School Concurrency provides that the School Board and local governments must work cooperatively to insure that student stations are available for students associated (concurrent) with new residential development. The 2014 ILA established the LOS for the District at 100% of FISH capacity, which is calculated by dividing enrollment by factored FISH capacity.

