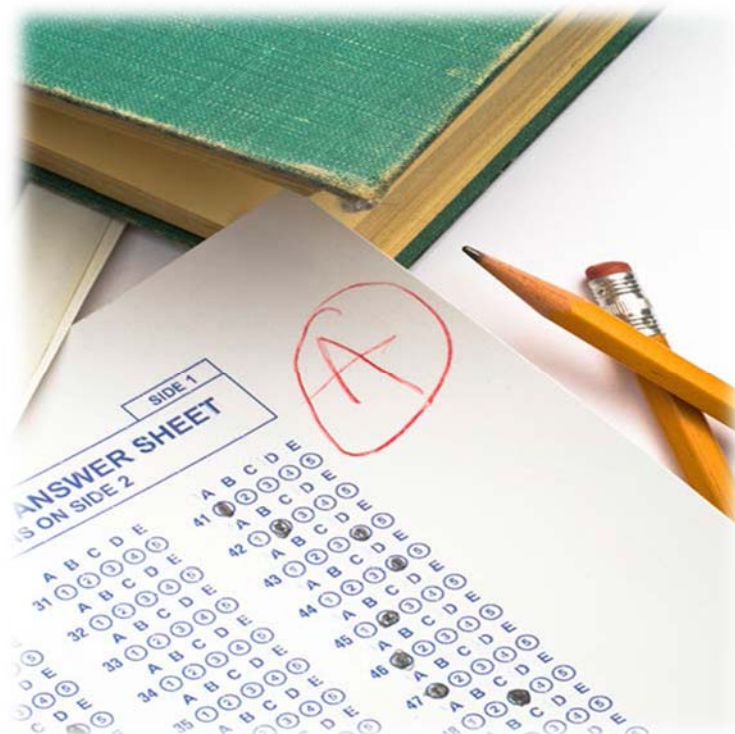


Industry Certification Results 2018- 2019



Brevard Public Schools
Mark W. Mullins, Ed.D., Superintendent

SCHOOL BOARD OF BREVARD COUNTY

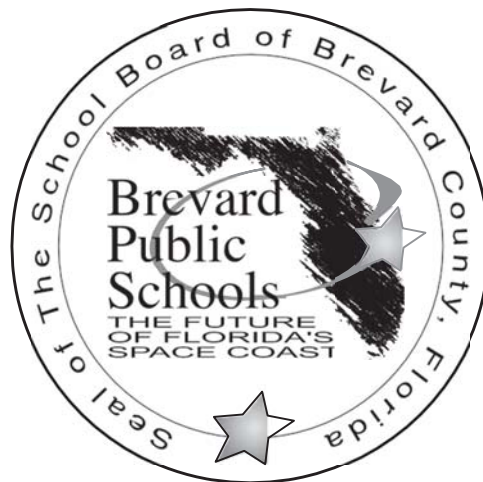
Educational Services Facility
2700 Judge Fran Jamieson Way
Viera, FL 32940-6601

SCHOOL BOARD MEMBERS

Misty Belford, Chairman
Matt Susin, Vice Chairman
Katy Campbell
Tina Descovich
Cheryl McDougall

SUPERINTENDENT

Mark W. Mullins, Ed.D.



SECONDARY LEADING & LEARNING

Dr. Stephanie Soliven
Assistant Superintendent

OFFICE OF CAREER & TECHNICAL EDUCATION

Janice Scholz
Director

Table of Contents

Industry Certification Results	1
Introduction	5
Industry Certification Results Seven Year Summary	7
Industry Certification District Results	11
District High School Industry Certification	13
District Middle School Industry Certification	15
Industry Certification Results By High School	17
Astronaut High School.....	19
Bayside High School	20
Cocoa Beach High School	21
Cocoa High School	22
Eau Gallie High School.....	23
Edgewood Jr/Sr High School.....	24
Heritage High School	25
Melbourne High School.....	26
Merritt Island High School.....	27
Palm Bay High School	28
Rockledge High School	29
Satellite High School	30
Space Coast High School	31
Titusville High School.....	32
Viera High School	33
West Shore High School	34
Other High Schools.....	35
Industry Certification Results By Middle/Jr. School	37
Central Middle School	39
Cocoa High School	40
Cocoa Beach Jr. School.....	41
DeLaura Middle School	42
Edgewood Jr. School.....	43
Hoover Middle School	44
Jackson Middle School	45
Jefferson Middle School.....	46
Johnson Middle School	47
Kennedy Middle School.....	48
Madison Middle School.....	49
McNair Middle School	50
Odyssey Charter Middle School	51
Southwest Middle School.....	52
Space Coast Middle School	53
Stone Middle School	54

Industry Certification Results by Assessment 55

Industry Certification by Program..... 63

Industry Certification Appendix..... 71

 HS Return on Investment (ROI) 73

 MS Return on Investment (ROI) 76

 Certiport Exam Return on Investment (ROI) 77

Introduction

Today's educational environment is heavily focused on accountability, standards and assessment. At the same time, industry is seeking assurances that job seekers have the skills required to fill their openings. At the local, state and federal levels, CTE programs are being tasked with providing students with credentials and certifications which are recognized and valued by our business and industry partners. Having a strong connection to industry, career and technical education has long understood the importance of industry recognized credential and certifications.

BPS Graduation Requirement

To ensure that every BPS graduate is postsecondary and/or workforce ready, students are required to complete a program of study which includes a minimum of 3 credits in one of the following areas:

- Approved dual enrollment, AP, IB, AICE or approved Honors Courses
- Sequential CTE program of study resulting in a credential endorsed by a national, state or local industry

State Requirement – CAPE Academies

At the state level, Florida Statutes require that career and professional academies be coordinated with the appropriate industry indicating that all components of the program are relevant and appropriate to prepare the student for further education and for employment in that industry. Florida Statutes further define that the State Board of Education, together with the Workforce Florida, Inc., will develop and adopt rules for implementing an industry certification process, based upon the highest available national standards for specific industry certification, to ensure student skill proficiency and to address emerging labor market and industry trends.

Florida Statutes require that all career-themed courses offered by a secondary school must lead to industry certification or college credit. Statutes further require that if the passage rate on an industry certification examination falls below 50%, the 3-year strategic plan must be amended to include specific strategies to improve the passage rate of the career-themed course.

Each school district shall make available digital materials, CAPE Digital Tools certificates, and CAPE industry certifications for students in prekindergarten through grade 12. Industry certifications that have a statewide articulation agreement approved by the State Board of Education may substitute the certification for up to two mathematics credits, except for Algebra 1 and Geometry and for one science credit, except for Biology 1. Industry certifications earned in information technology that are identified on the CAPE Industry Certification Funding List satisfy the online graduation requirement.

State Requirement – School Grade and Diploma Designations

Florida Statutes requires a portion of the high school and middle school grade be determined by students' participation and performance in industry certifications. Florida Statutes further expand the

requirements for CTE industry certification by including student attainment of CTE industry certifications as one of the two Standard High School Diploma Designations.

Federal Requirements

At the federal level, the Carl D. Perkins Career and Technical Education Act was reauthorized in 2018 and required student attainment of career and technical skill proficiencies, including student achievement on technical assessments that are aligned with industry-recognized standards. They are designed to measure the extent CTE concentrators (3 credits in the same CTE program) are leaving high school with validated technical skills. The Florida DOE approves the Technical Skill Attainment List using the following criteria requires a minimum of 150 hours' instruction, is occupationally specific, is a State or federally regulated professional license, and the certifying agency is accredited.

In response to the federal requirements, future district Perkins Act federal funding to BPS includes performance measures, targets and potential sanctions regarding Technical Skill Attainment for program concentrators. The SY 2018-2019 targets for BPS, established by the Florida DOE, was 93.47%.

In addition to the local, state and federal requirements for student industry certification, teachers and administrators can use assessment results to learn about student's skills as well as learn about the effectiveness of instruction and then apply that to instructional improvements. Assessment can be one of the most effective tools for increasing student achievement. By using assessment data for instructional purposes, teachers can improve program curriculum, identify instructional needs and maintain a continuous improvement process.

Focused on the new vision of Career and Technical Education, assessments are to be utilized for CTE students as they participate and/or complete their technical program of study. Assessments, while required at the federal, state and district levels, measure student understanding of both the knowledge and skills that are the foundation of the CTE program.

It is imperative that teachers and administrators maintain a positive perception of the value of technical skill attainment. Not only does it meet new local, state and federal requirements for CTE programs, assessments can provide a continuous improvement model for CTE instruction. Industry certifications can also provide business and industry with the assurance that CTE concentrators have the skills required to fill their openings; a win-win situation for all.

Industry Certification Results Seven Year Summary



This page intentionally left blank.

2018-2019 Industry Certification Results

Past 7 Years

Year	# Students Identified	# Participants	# Passing	# Failing	# Completing Participants	% Participants	% Passing	% Failing	Cost of Assessments
2018-19	8,680	7,495	5,001	2,394	7,495	86%	67%	33%	\$428,612.58
2017-18	7,406	7,406	4,489	1,908	6,397	100%	69%	31%	\$334,169.66
2016-17	6,261	6,261	4,702	1,561	6,261	100%	75%	25%	\$323,783.20
2015-16	5,883	5,844	3,900	1,326	5,226	99%	75%	25%	\$366,515.06
2014-15	5,517	5,419	3,395	1,126	4,521	98%	75%	25%	\$300,504.16
2013-14	4,760	4,737	3,180	942	4,122	100%	77%	23%	\$265,949.13
2012-13	3,716	3,513	2,447	780	3,227	95%	76%	24%	\$224,469.77

This page intentionally left blank.

Industry Certification District Results



This page intentionally left blank.

2018-19

District High School Industry Certification

2018-19 District High School Industry Certification															2018-19 Senior Industry Certification Statistics			
School	# Students Identified	# Participants	# In Progress/Didn't Test	# Passing	# Failing	# Completing Participants	Funding Weights	% Participants	% Passing	% Failing	% In Progress/Didn't Test	% Completing Participants	Cost of Assessments & Test Prep Used	Potential Bonus FTE Calculation	Potential CAPE Funding \$	Unduplicated Count of Seniors with Industry Certifications	% of Seniors who Graduated with an Industry Certification	# Industry Certification Earned by Seniors
CHS	340	304	36	223	81	304		89%	66%	24%	11%	89%	\$ 19,247.37	13.800	\$ 58,318.80	93	44%	125
EGHS	757	597	160	321	276	597		79%	42%	36%	21%	79%	\$ 30,108.44	37.000	\$ 156,362.00	102	28%	173
EHS	197	179	18	144	35	179		91%	73%	18%	9%	91%	\$ 9,871.50	14.400	\$ 60,854.40	43	32%	102
HHS	900	795	105	405	390	795		88%	45%	43%	12%	88%	\$ 53,633.50	46.700	\$ 197,354.20	175	40%	240
MHS	956	863	93	710	153	863		90%	74%	16%	10%	90%	\$ 47,317.91	79.100	\$ 334,276.60	287	57%	512
MIHS	368	233	135	162	71	233		63%	44%	19%	37%	63%	\$ 20,870.00	19.100	\$ 80,716.60	100	28%	157
PBHS	431	376	55	291	85	376		87%	68%	20%	13%	87%	\$ 16,345.83	20.700	\$ 87,478.20	107	29%	159
RHS	660	625	35	388	237	625		95%	59%	36%	5%	95%	\$ 23,308.00	38.900	\$ 164,391.40	134	39%	208
SHS	422	373	49	202	171	373		88%	48%	41%	12%	88%	\$ 19,202.40	25.300	\$ 106,917.80	92	30%	146
SCHS	385	315	70	243	72	315		82%	63%	19%	18%	82%	\$ 26,313.39	43.200	\$ 182,563.20	90	41%	144
THS	678	631	47	490	141	631		93%	72%	21%	7%	93%	\$ 32,506.80	40.200	\$ 169,885.20	191	63%	398
VHS	756	716	40	512	204	716		95%	68%	27%	5%	95%	\$ 39,108.49	57.100	\$ 241,304.60	190	41%	365
WSHS	69	14	55	4	10	14		20%	6%	14%	80%	20%	\$ 680.00	0.400	\$ 1,690.40	16	11%	18
AMI/Odyssey/Other	37	12	25	2	10	12		32%	5%	27%	68%	32%	\$ 3,406.49	0.400	\$ 1,690.40	8	7%	8
	8,152	7,009	1,143	4,794	2,215	7,009		78%	52%	26%	22%	78%	\$399,680.58	518.300	\$2,190,335.80	1,961	40%	3,341

This page intentionally left blank.

2018-19

District Middle School Industry Certification

School	# Students Identified	# Participants	# In Progress/Didn't Test	# Passing	# Failing	# Completing Participants	Potential CAPE Funding \$	% Participants	% Passing	% Failing	Potential Bonus FTE Calculation
CMS - Digital Tools	1156	1156		869	287	1156	\$ 91,498.70	100%	75%	25%	21.725
CHSMS - Digital Tools	262	262		182	80	262	\$ 19,163.13	100%	69%	31%	4.550
CBHSMS - Digital Tools	259	259		134	125	259	\$ 14,109.12	100%	52%	48%	3.350
DMS - Digital Tools	179	179		132	47	179	\$ 13,898.54	100%	74%	26%	3.300
EJRSR - Digital Tools	0	0		0	0	0	\$ -	0%	0%	0%	0.000
HMS - Digital Tools	151	151		122	29	151	\$ 12,845.62	100%	81%	19%	3.050
JAMS - Digital Tools	256	256		167	89	256	\$ 17,583.76	100%	65%	35%	4.175
JEMS - Digital Tools	329	329		162	167	329	\$ 17,057.30	100%	49%	51%	4.050
JOMS - Digital Tools	199	199		70	129	199	\$ 7,370.44	100%	35%	65%	1.750
KMS - Digital Tools	350	350		327	23	350	\$ 34,430.47	100%	93%	7%	8.175
MAMS - Digital Tools	288	288		106	182	288	\$ 11,160.95	100%	37%	63%	2.650
MCMS - Digital Tools	185	185		132	53	185	\$ 13,898.54	100%	71%	29%	3.300
OCS - Digital Tools	0	0		0	0	0	\$ -	0%	0%	0%	0.000
SCHSMS - Digital Tools	145	145		128	17	145	\$ 13,477.37	100%	88%	12%	3.200
STMS - Digital Tools	0	0		0	0	0	\$ -	0%	0%	0%	0.000
SWMS - Digital Tools	386	386		242	144	386	\$ 25,480.65	100%	63%	37%	6.050
Digital Tools	4,145	4,145		2,773	1,372	4,145	\$ 291,974.58	81%	53%	28%	69.325
CMS - Certifications	62	62		37	25	62	\$ 15,583.21	100%	60%	40%	3.700
CHSMS - Certifications	24	24		18	6	24	\$ 7,581.02	100%	75%	25%	1.800
CBHSMS - Certifications	69	69		49	20	69	\$ 20,637.22	97%	54%	43%	4.900
DMS - Certifications	20	20		16	4	20	\$ 6,738.68	100%	80%	20%	1.600
EJRSR - Certifications	13	13		11	2	13	\$ 4,632.85	100%	85%	15%	1.100
HMS - Certifications	53	53		38	15	53	\$ 16,004.38	100%	72%	28%	3.800
JAMS - Certifications	7	7		4	3	7	\$ 1,684.67	100%	57%	43%	0.400
JEMS - Certifications	10	10		9	1	10	\$ 3,790.51	100%	90%	10%	0.900
JOMS - Certifications	29	29		4	25	29	\$ 1,684.67	100%	14%	86%	0.400
KMS - Certifications	55	55		55	0	55	\$ 23,164.23	100%	100%	0%	5.500
MAMS - Certifications	44	44		15	29	44	\$ 6,317.52	100%	34%	66%	1.500
MCMS - Certifications	29	29		28	1	29	\$ 11,792.70	100%	97%	3%	2.800
OCS - Certifications	80	38		1	37	38	\$ 421.17	48%	1%	46%	0.100
SCHSMS - Certifications	15	15		14	1	15	\$ 5,896.35	100%	93%	7%	1.400
STMS - Certifications	4	4		4	0	4	\$ 1,684.67	100%	100%	0%	0.400
SWMS - Certifications	14	14		4	10	14	\$ 1,684.67	100%	29%	71%	0.400
Certifications	528	486		307	179	486	\$ 129,298.51	97%	65%	32%	30.700
District Total	4,673	4,631		3,080	1,551	4,631	\$ 421,273.09	89%	59%	30%	100.025

This page intentionally left blank.

Industry Certification Results By School



This page intentionally left blank.

2018-2019 Industry Certification Results

Astronaut High School

Program	Cert #	Assessment	Teacher of Record	School Grade	# Students Identified	# Participants	# In Progress	# Passing	# Failing	# Completing Participants	Funding Weights	Potential CAPE Funding \$	Formula FTE*4226	% Participants	% Passing	% Failing	Potential Bonus FTE Calculation
Digital Media/MultiMedia	ADOBE020	Adobe: Illustrator	Deese	X	47	47		15	32	47	0.1	\$ 6,317.52	\$ 6,339.00	100%	32%	68%	1.5
Digital Media/MultiMedia	ADOBE021	Adobe: InDesign	Deese	X	1	1		0	1	1	0.1	\$ -	\$ -	100%	0%	100%	0.0
Digital Media/MultiMedia	ADOBE022	Adobe: Photoshop	Deese	X	46	46		28	18	46	0.1	\$11,792.70	\$11,832.80	100%	61%	39%	2.8
Accounting Applications	INTUT001	Quickbooks	Deese	X	23	23		0	23	23	0.2	\$ -	\$ -	100%	0%	100%	0.0
Admin Office Specialist	MICRO069	MOS Bundle	Grooms	X	25	25		9	16	25	0.2	\$ 7,581.02	\$ 7,606.80	100%	36%	64%	1.8
Nursing Assistant	FDMQA002	C N A	Scott	X	13	13		8	5	13	0.1	\$ 3,369.34	\$ 3,380.80	100%	62%	38%	0.8
Nursing Assistant		CPR/AED/BLS for Healthcare Providers	Scott		5	5		5	0	5	0	\$ -	\$ -	100%	100%	0%	0.0
Emergency Medical Resp (EMR)	IEMSR001	Emergency Medical Responder	Scott	X	22	22		6	16	22	0.1	\$ 2,527.01	\$ 2,535.60	100%	27%	73%	0.6
Emergency Medical Resp (EMR)		CPR/AED/BLS for Healthcare Providers	Scott		4	4		4	0	4	0	\$ -	\$ -	100%	100%	0%	0.0
Bldg Construction Tech	HBINS002	Homebuilder's PAC	Morgan	X	0	0		0	0	0	0.1	\$ -	\$ -	0%	0%	0%	0.0
Nutrition & Food Science	NRAEF003	ServSafe Manager	Morgenthal	X	27	27		16	11	27	0.2	\$13,477.37	\$13,523.20	100%	59%	41%	3.2
												\$45,064.95	\$45,218.20				

2018-2019 Industry Certification Results

Bayside High School

Program	Cert #	Assessment	Teacher of Record	School Grade	# Students Identified	# Participants	# In Progress	# Passing	# Failing	# Completing Participants	Funding Weights	Potential CAPE Funding \$	% Participants	% Passing	% Failing	Potential Bonus FTE Calculation
Nursing Assistant	FDMQA002	C N A	Caraballo	X	14	14		11	3	14	0.1	\$ 4,632.85	100%	79%	21%	1.1
Exercise Science		CPR/AED/BLS for Healthcare Providers	Caraballo		13	13		13	0	13	0	\$ -	100%	100%	0%	0.0
Nursing Assistant		CPR/AED/BLS for Healthcare Providers	Caraballo		9	9		9	0	9	0	\$ -	100%	100%	0%	0.0
Culinary Arts	FRALA001	SafeStaff Food Handler Certification	Cox		59	59		59	0	59	0	\$ -	100%	100%	0%	0.0
Culinary Arts	NRAEF002	ProStart Certificate of Achievement	Cox	X	9	9		9	0	9	0.2	\$ 7,581.02	100%	100%	0%	1.8
Culinary Arts	NRAEF003	ServSafe Manager	Cox	X	39	39		13	26	39	0.2	\$ 10,950.36	100%	33%	67%	2.6
Embry Riddle Dual Enrollment	USINS001	Small UAS Safety Certification	Fenech	X	6	6		0	6	6	0.2	\$ -	100%	0%	100%	0.0
Technical Design	ADESK002	Autodesk - Certified User AutoCAD	Fleming	X	49	49		45	4	49	0.2	\$ 37,905.10	100%	92%	8%	9.0
Technical Design	ADESK008	Autodesk - Certified User Revit	Fleming	X	0	0		0	0	0	0.2	\$ -	0%	0%	0%	0.0
Technical Design	ADESK011	Autodesk - Certified User Inventor	Fleming	X	33	33		29	4	33	0.2	\$ 24,427.73	100%	88%	12%	5.8
Culinary Arts	FRALA001	SafeStaff Food Handler Certification	Gray		62	62		62	0	62	0	\$ -	100%	100%	0%	0.0
Culinary Arts	NRAEF002	ProStart Certificate of Achievement	Gray	X	25	25		25	0	25	0.2	\$ 21,058.39	100%	100%	0%	5.0
Culinary Arts	NRAEF003	ServSafe Manager	Gray	X	40	40		36	4	40	0.2	\$ 30,324.08	100%	90%	10%	7.2
Machining Technology	MSSCN001	MSSC Certified Production Technician	McCormick	X	5	5		5	0	5	0.5	\$ 10,529.20	100%	100%	0%	2.5
Applied Engineering Tech	SOLID003	Solidworks	Mitchell	X	31	31		20	11	31	0.2	\$ 16,846.71	100%	65%	35%	4.0
Exercise Science	NATHA003	CMAA	Parr	X	34	34		23	11	34	0.1	\$ 9,686.86	100%	68%	32%	2.3
Exercise Science		CPR/AED/BLS for Healthcare Providers	Parr		37	37		37	0	37	0	\$ -	100%	100%	0%	0.0
TV Production Tech	ADOBE018	Adobe: Premiere Pro	Potter	X	34	34		25	9	34	0.1	\$ 10,529.20	100%	74%	26%	2.5
TV Production Tech	ADOBE021	Adobe: InDesign	Potter	X	4	4		0	4	4	0.1	\$ -	100%	0%	100%	0.0
Digital Design	ADOBE010	Adobe: Dreamweaver	Robertson	X	11	11		11	0	11	0.2	\$ 9,265.69	100%	100%	0%	2.2
Digital Design	ADOBE011	Adobe: Animate	Robertson	X	13	13		9	4	13	0.2	\$ 7,581.02	100%	69%	31%	1.8
Digital Design	ADOBE018	Adobe: Premiere Pro	Robertson	X	11	11		11	0	11	0.1	\$ 4,632.85	100%	100%	0%	1.1
Digital Design	ADOBE020	Adobe: Illustrator	Robertson	X	52	52		34	18	52	0.1	\$ 14,319.71	100%	65%	35%	3.4
Digital Design	ADOBE021	Adobe: InDesign	Robertson	X	35	35		27	8	35	0.1	\$ 11,371.53	100%	77%	23%	2.7
Digital Design	ADOBE022	Adobe: Photoshop	Robertson	X	18	18		16	2	18	0.1	\$ 6,738.68	100%	89%	11%	1.6
Digital Design	MICRO069	MOS Bundle	Robertson	X	14	14		10	4	14	0.2	\$ 8,423.36	100%	71%	29%	2.0

2018-2019 Industry Certification Results

Cocoa Beach High School

Program	Cert #	Assessment	Teacher of Record	School Grade	# Students Identified	# Participants	# In Progress	# Passing	# Failing	# Completing Participants	Funding Weights	Potential Funding \$	% Participants	% Passing	% Failing	% In Progress/Didn't Test	% Completing Participants	Cost of Assessments & Test Prep Used	Potential Bonus FTE Calculation
Geospatial/Geographic Info Sys	DIGIT001	GIS Technician	Brown-Turner	X	0	0		0	0	0	0.1	\$ -	0%	0%	0%				0.000
Admin Office Specialist	MICRO069	MOS Bundle	Brown-Turner	X	48	48		29	19	48	0.2	\$ 24,427.73	100%	60%	40%				5.800
Admin Office Specialist	MICRO017	MS Office Master	Brown-Turner	X	0	0		0	0	0	0.2	\$ -	0%	0%	0%				0.000
Admin Office Specialist	ADOBE022	Adobe: Photoshop	Brown-Turner	X	1	1		1	0	1	0.1	\$ 421.17	100%	100%	0%				0.100
Admin Office Specialist	MICRO069	MOS Bundle	Kimball	X	41	41		30	11	41	0.2	\$ 25,270.07	100%	73%	27%				6.000
Fashion Tech & Design Svcs	NOCTI003	NOCTI - Apparel & Text Prod & Mer	Lengyel		3	3		3	0	3	0	\$ -	100%	100%	0%				0.000
Marketing Mgmt & Ent Prin	ADOBE021	Adobe: InDesign	Moore	X	8	8		0	8	8	0.1	\$ -	100%	0%	100%				0.000
Marketing Mgmt & Ent Prin	MICRO069	MOS Bundle	Moore	X	5	5		4	1	5	0.2	\$ 3,369.34	100%	80%	20%				0.800

2018-2019 Industry Certification Results

Cocoa High School

Program	Cert #	Assessment	Teacher of Record	School Grade	# Students Identified	# Participants	# In Progress	# Passing	# Failing	# Completing Participants	Funding Weights	Potential Funding \$	% Participants	% Passing	% Failing	Potential Bonus FTE Calculation
Technical Design	ADESK002	Autodesk - Certified User AutoCAD	Auxier	X	20	20		19	1	20	0.2	\$ 16,004.38	100%	95%	5%	3.800
Culinary Arts	FRALA001	SafeStaff Food Handler Certification	Knight		14	14		14	0	14	0	\$ -	100%	100%	0%	0.000
Culinary Arts	NRAEF003	ServSafe Manager	Knight	X	0	0		0	0	0	0.2	\$ -	0%	0%	0%	0.000
Exercise Science	NATHA003	CMAA	Mannes	X	12	12		10	2	12	0.1	\$ 4,211.68	100%	83%	17%	1.000
Exercise Science		CPR/AED/BLS for Healthcare Providers	Mannes		37	37		37	0	37	0	\$ -	100%	100%	0%	0.000
Digital Design	ADOBE010	Adobe: Dreamweaver	Nauman	X	1	1		0	1	1	0.2	\$ -	100%	0%	100%	0.000
Digital Design	ADOBE018	Adobe: Premiere Pro	Nauman	X	1	1		0	1	1	0.1	\$ -	100%	0%	100%	0.000
Digital Design	ADOBE020	Adobe: Illustrator	Nauman	X	2	2		1	1	2	0.1	\$ 421.17	100%	50%	50%	0.100
Digital Design	ADOBE021	Adobe: InDesign	Nauman	X	14	14		3	11	14	0.1	\$ 1,263.50	100%	21%	79%	0.300
Digital Design	ADOBE022	Adobe: Photoshop	Nauman	X	22	22		10	12	22	0.1	\$ 4,211.68	100%	45%	55%	1.000
Digital Info Tech	MICRO069	MOS Bundle	Nauman	X	23	23		19	4	23	0.2	\$ 16,004.38	100%	83%	17%	3.800
Auto Collision Tech	FLADA001	FLADA	Riffe	X	34	34		13	21	34	0.1	\$ 5,475.18	100%	38%	62%	1.300
Auto Collision Tech	NIASE087	ASE: Entry-Level Collision-Non-Struct Ana	Riffe	X	24	24		9	15	24	0.1	\$ 3,790.51	100%	38%	63%	0.900
Auto Collision Tech	NIASE088	ASE: Entry-Level Collision-Painting & Ref	Riffe	X	0	0		0	0	0	0.1	\$ -	0%	0%	0%	0.000
Auto Collision Tech	NIASE089	ASE: Entry-Level Collision-Struct Analysis	Riffe	X	8	8		6	2	8	0.1	\$ 2,527.01	100%	75%	25%	0.600
Culinary Arts	FRALA001	SafeStaff Food Handler Certification	Thomas		77	77		77	0	77	0	\$ -	100%	100%	0%	0.000
Culinary Arts	NRAEF003	ServSafe Manager	Thomas	X	15	15		5	10	15	0.2	\$ 4,211.68	100%	33%	67%	1.000

2018-2019 Industry Certification Results

Eau Gallie High School

Program	Cert #	Assessment	Teacher of Record	School Grade	# Students Identified	# Participants	# In Progress	# Passing	# Failing	# Completing Participants	Funding Weights	Potential Funding \$	% Participants	% Passing	% Failing	Potential Bonus FTE Calculation
Admin Office Specialist	MICRO069	MOS Bundle	Barton, C	X	14	14		8	6	14	0.2	\$6,738.68	100%	57%	43%	1.6
Early Childhood Education	CPREC001	Child Development Associate	Dilger, E	X	1	1		1	0	1	0.2	\$842.34	100%	100%	0%	0.2
Early Childhood Education	FLDCF004	Intro to Childcare Training Certificate	Dilger, E		10	10		8	2	10	0	\$0.00	100%	80%	20%	0.0
Early Childhood Education	FLDCF005	Staff Credential	Dilger, E		9	9		9	0	9	0	\$0.00	100%	100%	0%	0.0
Early Childhood Education		CPR/First Aid	Dilger, E		8	8		8	0	8	0	\$0.00	100%	100%	0%	0.0
Digital Media/MultiMedia	ADOBE010	Adobe: Dreamweaver	Keener, B	X	6	6		3	3	6	0.2	\$2,527.01	100%	50%	50%	0.6
Digital Media/MultiMedia	ADOBE011	Adobe: Animate	Keener, B	X	3	3		3	0	3	0.2	\$2,527.01	100%	100%	0%	0.6
Digital Media/MultiMedia	ADOBE018	Adobe: Premiere Pro	Keener, B	X	8	8		1	7	8	0.1	\$421.17	100%	13%	88%	0.1
Digital Media/MultiMedia	ADOBE020	Adobe: Illustrator	Keener, B	X	43	43		11	32	43	0.1	\$4,632.85	100%	26%	74%	1.1
Digital Media/MultiMedia	ADOBE021	Adobe: InDesign	Keener, B	X	24	24		7	17	24	0.1	\$2,948.17	100%	29%	71%	0.7
Digital Media/MultiMedia	ADOBE022	Adobe: Photoshop	Keener, B	X	107	107		33	74	107	0.1	\$13,898.54	100%	31%	69%	3.3
Technical Design	ADESK002	Autodesk - Certified User AutoCAD	Lustic, B	X	97	97		48	49	97	0.2	\$40,432.11	100%	49%	51%	9.6
Technical Design	ADESK008	Autodesk - Certified User Revit	Lustic, B	X	1	1		0	1	1	0.2	\$0.00	100%	0%	100%	0.0
Technical Design	ADESK011	Autodesk - Certified User Inventor	Lustic, B	X	20	20		9	11	20	0.2	\$7,581.02	100%	45%	55%	1.8
Aviation Assembly & Fabrication	FEDAA013	FAA Ground School	McInnish, B	X	17	17		17	0	17	0.2	\$14,319.71	100%	100%	0%	3.4
Aviation Assembly & Fabrication	NCATT003	Aerospace/Aircraft Assembly	McInnish, B	X	19	19		9	10	19	0.2	\$7,581.02	100%	47%	53%	1.8
Exercise Science	NATHA003	CMAA	McMahon, S	X	18	18		17	1	18	0.1	\$7,159.85	100%	94%	6%	1.7
Exercise Science		CPR/AED/BLS for Healthcare Providers	McMahon, S		24	24		24	0	24	0	\$0.00	100%	100%	0%	0.0
Outboard Marine Svc Tech	FLADA001	FLADA	Reeder, J	X	25	25		8	17	25	0.1	\$3,369.34	100%	32%	68%	0.8
Outboard Marine Svc Tech	NIASE077	ASE: Entry-Level Auto - Transmission/Trans Axle	Reeder, J	X	2	2		1	1	2	0.1	\$421.17	100%	50%	50%	0.1
Outboard Marine Svc Tech	NIASE078	ASE: Entry-Level Auto - Auto Svc Tech	Reeder, J	X	7	7		3	4	7	0.1	\$1,263.50	100%	43%	57%	0.3
Outboard Marine Svc Tech	NIASE079	ASE: Entry-Level Auto - Brakes	Reeder, J	X	6	6		2	4	6	0.1	\$842.34	100%	33%	67%	0.2
Outboard Marine Svc Tech	NIASE080	ASE: Entry-Level Auto - Electrical/Electronic Systems	Reeder, J	X	2	2		1	1	2	0.1	\$421.17	100%	50%	50%	0.1
Outboard Marine Svc Tech	NIASE081	ASE: Entry-Level Auto - Engine Performance	Reeder, J	X	8	8		5	3	8	0.1	\$2,105.84	100%	63%	38%	0.5
Outboard Marine Svc Tech	NIASE082	ASE: Entry-Level Auto - Engine Repair	Reeder, J	X	9	9		8	1	9	0.1	\$3,369.34	100%	89%	11%	0.8
Outboard Marine Svc Tech	NIASE083	ASE: Entry-Level Auto - Heating & Air Conditioning	Reeder, J	X	3	3		1	2	3	0.1	\$421.17	100%	33%	67%	0.1
Outboard Marine Svc Tech	NIASE084	ASE: Entry-Level Auto - Manual Drive Train & Axles	Reeder, J	X	1	1		0	1	1	0.1	\$0.00	100%	0%	100%	0.0
Outboard Marine Svc Tech	NIASE085	ASE: Entry-Level Auto - Suspension & Steering	Reeder, J	X	6	6		4	2	6	0.1	\$1,684.67	100%	67%	33%	0.4
Auto Maint & Lt Repair	FLADA001	FLADA	Younger, P	X	0	0		0	0	0	0.1	\$0.00	0%	0%	0%	0.0
Auto Maint & Lt Repair	NIASE077	ASE: Entry-Level Auto - Transmission/Trans Axle	Younger, P	X	3	3		3	0	3	0.1	\$1,263.50	100%	100%	0%	0.3
Auto Maint & Lt Repair	NIASE078	ASE: Entry-Level Auto - Auto Svc Tech	Younger, P	X	4	4		4	0	4	0.1	\$1,684.67	100%	100%	0%	0.4
Auto Maint & Lt Repair	NIASE079	ASE: Entry-Level Auto - Brakes	Younger, P	X	22	22		14	8	22	0.1	\$5,896.35	100%	64%	36%	1.4
Auto Maint & Lt Repair	NIASE080	ASE: Entry-Level Auto - Electrical/Electronic Systems	Younger, P	X	9	9		7	2	9	0.1	\$2,948.17	100%	78%	22%	0.7
Auto Maint & Lt Repair	NIASE081	ASE: Entry-Level Auto - Engine Performance	Younger, P	X	5	5		5	0	5	0.1	\$2,105.84	100%	100%	0%	0.5
Auto Maint & Lt Repair	NIASE082	ASE: Entry-Level Auto - Engine Repair	Younger, P	X	13	13		11	2	13	0.1	\$4,632.85	100%	85%	15%	1.1
Auto Maint & Lt Repair	NIASE083	ASE: Entry-Level Auto - Heating & Air Conditioning	Younger, P	X	12	12		7	5	12	0.1	\$2,948.17	100%	58%	42%	0.7
Auto Maint & Lt Repair	NIASE084	ASE: Entry-Level Auto - Manual Drive Train & Axles	Younger, P	X	9	9		4	5	9	0.1	\$1,684.67	100%	44%	56%	0.4
Auto Maint & Lt Repair	NIASE085	ASE: Entry-Level Auto - Suspension & Steering	Younger, P	X	22	22		17	5	22	0.1	\$7,159.85	100%	77%	23%	1.7

2018-2019 Industry Certification Results

Edgewood Jr/Sr High School

High School Results

Program	Cert #	Assessment	Teacher of Record	School Grade	# Students Identified	# Participants	# In Progress	# Passing	# Failing	# Completing Participants	Funding Weights	Potential Funding \$	% Participants	% Passing	% Failing	Potential Bonus FTE Calculation
TV Production Tech	ADOBE018	Adobe: Premiere Pro	Kyzer, M	X	21	21		20	1	21	0.1	\$ 8,423.36	100%	95%	5%	2.0
Digital Design	ADOBE018	Adobe: Premiere Pro	Vickers, P	X	0	0		0	0	0	0.1	\$ -	0%	0%	0%	0.0
Digital Design	ADOBE020	Adobe: Illustrator	Vickers, P	X	47	47		39	8	47	0.1	\$ 16,425.54	100%	83%	17%	3.9
Digital Design	ADOBE021	Adobe: InDesign	Vickers, P	X	55	55		37	18	55	0.1	\$ 15,583.21	100%	67%	33%	3.7
Digital Design	ADOBE022	Adobe: Photoshop	Vickers, P	X	56	56		48	8	56	0.1	\$ 20,216.05	100%	86%	14%	4.8

2018-2019 Industry Certification Results

Heritage High School

Program	Cert #	Assessment	Teacher of Record	School Grade	# Students Identified	# Participants	# In Progress	# Passing	# Failing	# Completing Participants	Funding Weights	Potential Funding \$	% Participants	% Passing	% Failing	Potential Bonus FTE Calculation
Auto Maint & Lt Repair	FLADA001	FLADA	Broud, M	X	0	0		0	0	0	0.1	\$ -	0%	0%	0%	0.0
Auto Maint & Lt Repair	NIASE077	ASE: Entry-Level Auto - Transmission/Trans Axle	Broud, M	X	0	0		0	0	0	0.1	\$ -	0%	0%	0%	0.0
Auto Maint & Lt Repair	NIASE078	ASE: Entry-Level Auto - Auto Svc Tech	Broud, M	X	0	0		0	0	0	0.1	\$ -	0%	0%	0%	0.0
Auto Maint & Lt Repair	NIASE079	ASE: Entry-Level Auto - Brakes	Broud, M	X	34	34		29	5	34	0.1	\$ 12,213.87	100%	85%	15%	2.9
Auto Maint & Lt Repair	NIASE080	ASE: Entry-Level Auto - Electrical/Electronic Systems	Broud, M	X	0	0		0	0	0	0.1	\$ -	0%	0%	0%	0.0
Auto Maint & Lt Repair	NIASE081	ASE: Entry-Level Auto - Engine Performance	Broud, M	X	0	0		0	0	0	0.1	\$ -	0%	0%	0%	0.0
Auto Maint & Lt Repair	NIASE082	ASE: Entry-Level Auto - Engine Repair	Broud, M	X	0	0		0	0	0	0.1	\$ -	0%	0%	0%	0.0
Auto Maint & Lt Repair	NIASE083	ASE: Entry-Level Auto - Heating & Air Conditioning	Broud, M	X	9	9		7	2	9	0.1	\$ 2,948.17	100%	78%	22%	0.7
Auto Maint & Lt Repair	NIASE084	ASE: Entry-Level Auto - Manual Drive Train & Axles	Broud, M	X	0	0		0	0	0	0.1	\$ -	0%	0%	0%	0.0
Auto Maint & Lt Repair	NIASE085	ASE: Entry-Level Auto - Suspension & Steering	Broud, M	X	35	35		24	11	35	0.1	\$ 10,108.03	100%	69%	31%	2.4
Nutrition & Food Science	NRAEF003	ServSafe Manager	Burch	X	74	74		26	48	74	0.2	\$ 21,900.73	100%	35%	65%	5.2
Envir Water & Recl Tech	FLDEP003	Wastewater Treatment Plant Oper C	Doran	X	0	0		0	0	0	0.1	\$ -	0%	0%	0%	0.0
Envir Water & Recl Tech	FLDEP006	Water Treat Plant Oper Lvl C	Doran	X	18	18		8	10	18	0.1	\$ 3,369.34	100%	44%	56%	0.8
Exercise Science	NATHA003	CMAA	Luna	X	63	63		36	27	63	0.1	\$ 15,162.04	100%	57%	43%	3.6
Exercise Science		CPR/AED/BLS for Healthcare Providers	Luna		44	44		44	0	44	0	\$ -	100%	100%	0%	0.0
Technical Design	ADESK002	Autodesk - Certified User AutoCAD	Pallo	X	5	5		4	1	5	0.2	\$ 3,369.34	100%	80%	20%	0.8
Technical Design	ADESK008	Autodesk - Certified User Revit	Pallo	X	1	1		0	1	1	0.2	\$ -	100%	0%	100%	0.0
Technical Design	ADESK011	Autodesk - Certified User Inventor	Pallo	X	28	28		22	6	28	0.2	\$ 18,531.38	100%	79%	21%	4.4
Technical Design	ADESK021	Autodesk - Certified Professional AutoCAD	Pallo	X	1	1		1	0	1	0.2	\$ 842.34	100%	100%	0%	0.2
Admin Office Specialist	MICRO069	MOS Bundle	Pallo	X	36	36		10	26	36	0.2	\$ 8,423.36	100%	28%	72%	2.0
Admin Office Specialist	MICRO017	MS Office Master	Payne	X	4	4		3	1	4	0.2	\$ 2,527.01	100%	75%	25%	0.6
Admin Office Specialist	MICRO069	MOS Bundle	Payne	X	52	52		45	7	52	0.2	\$ 37,905.10	100%	87%	13%	9.0
Digital Media/MultiMedia	ADOBE010	Adobe: Dreamweaver	Stengle	X	3	3		1	2	3	0.2	\$ 842.34	100%	33%	67%	0.2
Digital Media/MultiMedia	ADOBE018	Adobe: Premiere Pro	Stengle	X	58	58		12	46	58	0.1	\$ 5,054.01	100%	21%	79%	1.2
Digital Media/MultiMedia	ADOBE020	Adobe: Illustrator	Stengle	X	83	83		12	71	83	0.1	\$ 5,054.01	100%	14%	86%	1.2
Digital Media/MultiMedia	ADOBE021	Adobe: InDesign	Stengle	X	23	23		4	19	23	0.1	\$ 1,684.67	100%	17%	83%	0.4
Digital Media/MultiMedia	ADOBE022	Adobe: Photoshop	Stengle	X	159	159		67	92	159	0.1	\$ 28,218.24	100%	42%	58%	6.7
Admin Office Specialist	MICRO069	MOS Bundle	Stengle	X	0	0		0	0	0	0.2	\$ -	0%	0%	0%	0.0
Medical Admin Specialist	NATHA003	CMAA	Trotman	X	29	29		14	15	29	0.1	\$ 5,896.35	100%	48%	52%	1.4
Medical Admin Specialist		CPR/AED/BLS for Healthcare Providers	Trotman		27	27		27	0	27	0	\$ -	100%	100%	0%	0.0
Advanced Manufacturing Tech	MSSCN001	MSSC Certified Production Technician	Verdin	X	4	4		4	0	4	0.5	\$ 8,423.36	100%	100%	0%	2.0
Advanced Manufacturing Tech	SOLID003	Solidworks	Verdin	X	5	5		5	0	5	0.2	\$ 4,211.68	100%	100%	0%	1.0

2018-2019 Industry Certification Results

Melbourne High School

Program	Cert #	Assessment	Teacher of Record	School Grade	# Students Identified	# Participants	# In Progress	# Passing	# Failing	# Completing Participants	Funding Weights	Potential Funding \$	% Participants	% Passing	% Failing	Potential Bonus FTE Calculation
Web Development	ADOBE010	Adobe: Dreamweaver	Angove	X	50	50		40	10	50	0.2	\$ 33,893.42	100%	80%	20%	8.0
Web Development	ADOBE011	Adobe: Animate	Angove	X	43	43		34	9	43	0.2	\$ 28,839.41	100%	79%	21%	6.8
Web Development	ADOBE018	Adobe: Premiere Pro	Angove	X	17	17		14	3	17	0.1	\$ 5,896.35	100%	82%	18%	1.4
Web Development	ADOBE020	Adobe: Illustrator	Angove	X	6	6		4	2	6	0.1	\$ 1,684.67	100%	67%	33%	0.4
Web Development	ADOBE021	Adobe: Illustrator	Angove	X	2	2		0	2	2	0.1	\$ -	100%	0%	100%	0.0
Web Development	ADOBE022	Adobe: Photoshop	Angove	X	29	29		28	1	29	0.1	\$ 11,792.70	100%	97%	3%	2.8
Culinary Arts	FRALA001	SafeStaff Food Handler Certification	Cheshire		59	59		59	0	59	0	\$ -	100%	100%	0%	0.0
Culinary Arts	NRAEF003	ServSafe Manager	Cheshire	X	48	48		37	11	48	0.2	\$ 31,166.42	100%	77%	23%	7.4
Bldg Construction Tech	HBINS002	Homebuilder's PAC	Dyer	X	1	1		1	0	1	0.1	\$ 421.17	100%	100%	0%	0.1
Digital Design	ADOBE018	Adobe: Premiere Pro	Fannon	X	0	0		0	0	0	0.1	\$ -	0%	0%	0%	0.0
Digital Design	ADOBE020	Adobe: Illustrator	Fannon	X	17	17		15	2	17	0.1	\$ 6,317.52	100%	88%	12%	1.5
Digital Design	ADOBE021	Adobe: InDesign	Fannon	X	37	37		26	11	37	0.1	\$ 10,950.36	100%	70%	30%	2.6
Digital Design	ADOBE022	Adobe: Photoshop	Fannon	X	103	103		67	36	103	0.1	\$ 28,218.24	100%	65%	35%	6.7
Culinary Arts	FRALA001	SafeStaff Food Handler Certification	Ferguson		87	87		87	0	87	0	\$ -	100%	100%	0%	0.0
Culinary Arts	NRAEF003	ServSafe Manager	Ferguson	X	54	54		41	13	54	0.2	\$ 34,535.76	100%	76%	24%	8.2
Applied Engineering Tech	SOLID003	Solidworks	Gabeler	X	36	36		35	1	36	0.2	\$ 29,481.75	100%	97%	3%	7.0
(EMR)	IEMSR001	Emergency Medical Responder	Krug	X	26	26		12	14	26	0.1	\$ 5,054.01	100%	46%	54%	1.2
Nursing Assistant	FDMQA002	C N A	Krug	X	13	13		12	1	13	0.1	\$ 5,054.01	100%	92%	8%	1.2
Nursing Assistant		CPR/AED/BLS for Healthcare Providers	Krug		54	54		54	0	54	0	\$ -	100%	100%	0%	0.0
(EMR)		CPR/AED/BLS for Healthcare Providers	Krug		25	25		25	0	25	0	\$ -	100%	100%	0%	0.0
Finance Academy	INTUT001	Quickbooks	Schweich	X	10	10		3	7	10	0.2	\$ 2,527.01	100%	30%	70%	0.6
Finance Academy	MICRO069	MOS Bundle	Schweich	X	5	5		4	1	5	0.2	\$ 3,369.34	100%	80%	20%	0.8
Digital Info Tech	MICRO069	MOS Bundle	Uhing	X	141	141		112	29	141	0.2	\$ 94,341.59	100%	79%	21%	22.4

2018-2019 Industry Certification Results

Merritt Island High School

Program	Cert #	Assessment	Teacher of Record	School Grade	# Students Identified	# Participants	# In Progress	# Passing	# Failing	# Completing Participants	Funding Weights	Potential Funding \$	% Participants	% Passing	% Failing	Potential Bonus FTE Calculation
Admin Office Specialist	INTUT001	Quickbooks	Burr, K	X	0	0		0	0	0	0.2	\$ -	0%	0%	0%	0.0
Admin Office Specialist	MICRO017	MS Office Master	Burr, K	X	0	0		0	0	0	0.2	\$ -	0%	0%	0%	0.0
Admin Office Specialist	MICRO069	MOS Bundle	Burr, K	X	29	29		24	5	29	0.2	\$ 20,216.05	100%	83%	17%	4.8
Hospitality & Tourism Mgmt	INTUT001	Quickbooks	Burr, K	X	1	1		0	1	1	0.2	\$ -	100%	0%	100%	0.0
Hospitality & Tourism Mgmt	MICRO017	MS Office Master	Burr, K	X	1	1		1	0	1	0.2	\$ 842.34	100%	100%	0%	0.2
Hospitality & Tourism Mgmt	MICRO069	MOS Bundle	Burr, K	X	15	15		12	3	15	0.2	\$ 10,108.03	100%	80%	20%	2.4
Digital Design	ADOBE011	Adobe: Animate	Forbes, K	X	0	0		0	0	0	0.2	\$ -	0%	0%	0%	0.0
Digital Design	ADOBE018	Adobe: Premiere Pro	Forbes, K	X	16	16		15	1	16	0.1	\$ 6,317.52	100%	94%	6%	1.5
Digital Design	ADOBE020	Adobe: Illustrator	Forbes, K	X	9	9		9	0	9	0.1	\$ 3,790.51	100%	100%	0%	0.9
Digital Design	ADOBE021	Adobe: InDesign	Forbes, K	X	19	19		17	2	19	0.1	\$ 7,159.85	100%	89%	11%	1.7
Digital Design	ADOBE022	Adobe: Photoshop	Forbes, K	X	9	9		9	0	9	0.1	\$ 3,790.51	100%	100%	0%	0.9
Hospitality & Tourism Mgmt	ADOBE018	Adobe: Premiere Pro	Forbes, K	X	1	1		1	0	1	0.1	\$ 421.17	100%	100%	0%	0.1
Hospitality & Tourism Mgmt	ADOBE020	Adobe: Illustrator	Forbes, K	X	2	2		2	0	2	0.1	\$ 842.34	100%	100%	0%	0.2
Hospitality & Tourism Mgmt	ADOBE021	Adobe: InDesign	Forbes, K	X	7	7		7	0	7	0.1	\$ 2,948.17	100%	100%	0%	0.7
Hospitality & Tourism Mgmt	ADOBE022	Adobe: Photoshop	Forbes, K	X	2	2		2	0	2	0.1	\$ 842.34	100%	100%	0%	0.2
Hospitality & Tourism Mgmt	MICRO069	MOS Bundle	Forbes, K	X	1	1		1	0	1	0.2	\$ 842.34	100%	100%	0%	0.2
Engineering Pathways (PLTW)	ADESK011	Autodesk - Certified User Inventor	Parker, C	X	19	19		8	11	19	0.2	\$ 6,738.68	100%	42%	58%	1.6
Early Childhood Education	CPREC001	Child Development Associate	Pearlman, S	X	3	3		3	0	3	0.2	\$ 2,527.01	100%	100%	0%	0.6
Early Childhood Education	FLDCF004	Intro to Childcare Training Certificate	Pearlman, S		10	10		10	0	10	0	\$ -	100%	100%	0%	0.0
Early Childhood Education	FLDCF005	Staff Credential	Pearlman, S		10	10		10	0	10	0	\$ -	100%	100%	0%	0.0
Early Childhood Education		CPR/First Aid	Pearlman, S		10	10		10	0	10	0	\$ -	100%	100%	0%	0.0
Web Development	ADOBE010	Adobe: Dreamweaver	Strazzeri, D	X	7	7		0	7	7	0.2	\$ -	100%	0%	100%	0.0
Web Development	ADOBE011	Adobe: Animate	Strazzeri, D	X	11	11		6	5	11	0.2	\$ 5,054.01	100%	55%	45%	1.2
Nutrition & Food Science	NRAEF003	ServSafe Manager	Vandenbeld, K	X	4	4		4	0	4	0.2	\$ 3,369.34	100%	100%	0%	0.8
Auto Maint & Lt Repair	FLADA001	FLADA	Wilson, C	X	0	0		0	0	0	0.1	\$ -	0%	0%	0%	0.0
Auto Maint & Lt Repair	NIASE077	ASE: Entry-Level Auto - Transmission/Trans Axle	Wilson, C	X	0	0		0	0	0	0.1	\$ -	0%	0%	0%	0.0
Auto Maint & Lt Repair	NIASE078	ASE: Entry-Level Auto - Auto Svc Tech	Wilson, C	X	0	0		0	0	0	0.1	\$ -	0%	0%	0%	0.0
Auto Maint & Lt Repair	NIASE079	ASE: Entry-Level Auto - Brakes	Wilson, C	X	21	21		4	17	21	0.1	\$ 1,684.67	100%	19%	81%	0.4
Auto Maint & Lt Repair	NIASE080	ASE: Entry-Level Auto - Electrical/Electronic Systems	Wilson, C	X	0	0		0	0	0	0.1	\$ -	0%	0%	0%	0.0
Auto Maint & Lt Repair	NIASE081	ASE: Entry-Level Auto - Engine Performance	Wilson, C	X	0	0		0	0	0	0.1	\$ -	0%	0%	0%	0.0
Auto Maint & Lt Repair	NIASE082	ASE: Entry-Level Auto - Engine Repair	Wilson, C	X	26	26		7	19	26	0.1	\$ 2,948.17	100%	27%	73%	0.7
Auto Maint & Lt Repair	NIASE083	ASE: Entry-Level Auto - Heating & Air Conditioning	Wilson, C	X	0	0		0	0	0	0.1	\$ -	0%	0%	0%	0.0
Auto Maint & Lt Repair	NIASE084	ASE: Entry-Level Auto - Manual Drive Train & Axles	Wilson, C	X	0	0		0	0	0	0.1	\$ -	0%	0%	0%	0.0
Auto Maint & Lt Repair	NIASE085	ASE: Entry-Level Auto - Suspension & Steering	Wilson, C	X	0	0		0	0	0	0.1	\$ -	0%	0%	0%	0.0

2018-2019 Industry Certification Results

Palm Bay High School

Program	Cert #	Assessment	Teacher of Record	School Grade	# Students Identified	# Participants	# In Progress	# Passing	# Failing	# Completing Participants	Funding Weights	Potential Funding \$	% Participants	% Passing	% Failing	Potential Bonus FTE Calculation
Technical Design	ADESK002	Autodesk - Certified User AutoCAD	Allen, D	X	15	15		11	4	15	0.2	\$ 9,265.69	100%	73%	27%	2.2
Technical Design	ADESK008	Autodesk - Certified User Revit	Allen, D	X	0	0		0	0	0	0.2	\$ -	0%	0%	0%	0.0
Technical Design	ADESK011	Autodesk - Certified User Inventor	Allen, D	X	16	16		14	2	16	0.2	\$ 11,792.70	100%	88%	13%	2.8
Technical Design	ADESK024	Autodesk - Certified Professional Inventor	Allen, D	X	5	5		3	2	5	0.2	\$ 2,527.01	100%	60%	40%	0.6
Technical Design (Adv Tech Appl)	ADESK008	Autodesk - Certified User Revit	Allen, D	X	1	1		0	1	1	0.2	\$ -	100%	0%	100%	0.0
Technical Design (Adv Tech Appl)	ADESK011	Autodesk - Certified User Inventor	Allen, D	X	1	1		1	0	1	0.2	\$ 842.34	100%	100%	0%	0.2
Applied Robotics	ADESK002	Autodesk - Certified User AutoCAD	Allen, D	X	1	1		1	0	1	0.2	\$ 842.34	100%	100%	0%	0.2
Applied Robotics	ADESK008	Autodesk - Certified User Revit	Allen, D	X	0	0		0	0	0	0.2	\$ -	0%	0%	0%	0.0
Applied Robotics	ADESK011	Autodesk - Certified User Inventor	Allen, D	X	10	10		10	0	10	0.2	\$ 8,423.36	100%	100%	0%	2.0
Applied Robotics	ADESK024	Autodesk - Certified Professional Inventor	Allen, D	X	4	4		3	1	4	0.2	\$ 2,527.01	100%	75%	25%	0.6
Applied Engineering Tech	SOLID003	Solidworks	Allen, R	X	17	17		15	2	17	0.2	\$ 12,635.03	100%	88%	12%	3.0
Fashion Tech & Design Svcs	NOCTI003	NOCTI - Apparel & Text Prod & Mer	Baker, K		12	12		10	2	12	0	\$ -	100%	83%	17%	0.0
Bldg Construction Tech	HBINS002	Homebuilder's PAC	Hayes, S	X	0	0		0	0	0	0.1	\$ -	0%	0%	0%	0.0
Culinary Arts	FRALA001	SafeStaff Food Handler Certification	Ho, D		100	100		100	0	100	0	\$ -	100%	100%	0%	0.0
Culinary Arts	NRAEF002	ProStart Certificate of Achievement	Ho, D	X	1	1		1	0	1	0.2	\$ 842.34	100%	100%	0%	0.2
Culinary Arts	NRAEF003	ServSafe Manager	Ho, D	X	23	23		19	4	23	0.2	\$ 16,004.38	100%	83%	17%	3.8
Web App Dev & Programming	PROSO017	CIW - JavaScript Specialist	Johnston, B	X	3	3		0	3	3	0.2	\$ -	100%	0%	100%	0.0
Web App Dev & Programming	PROSO027	CIW - Advanced HTML5 & CSS3 Spec	Johnston, B	X	0	0		0	0	0	0.2	\$ -	0%	0%	0%	0.0
Web App Dev & Programming	MICRO080	MTA - HTML5 Application Developer Fund	Johnston, B	X	3	3		1	2	3	0.2	\$ 842.34	100%	33%	67%	0.2
Web App Dev & Programming	MICRO104	MTA - Intro to Programming Using JavaScript	Johnston, B	X	3	3		1	2	3	0.2	\$ 842.34	100%	33%	67%	0.2
Web App Dev & Programming	MICRO105	MTA - Intro to Programming Using HTML & CSS	Johnston, B	X	4	4		2	2	4	0.1	\$ 842.34	100%	50%	50%	0.2
Early Childhood Education	CPREC001	Child Development Associate	Pelchat, K	X	6	6		6	0	6	0.2	\$ 5,054.01	100%	100%	0%	1.2
Early Childhood Education	FLDCF004	Intro to Childcare Training Certificate	Pelchat, K		14	14		7	7	14	0	\$ -	100%	50%	50%	0.0
Early Childhood Education	FLDCF005	Staff Credential	Pelchat, K		14	14		14	0	14	0	\$ -	100%	100%	0%	0.0
Early Childhood Education		CPR/First Aid	Pelchat, K		14	14		14	0	14	0	\$ -	100%	100%	0%	0.0
Digital Design	ADOBE010	Adobe: Dreamweaver	Regan, P	X	0	0		0	0	0	0.2	\$ -	0%	0%	0%	0.0
Digital Design	ADOBE018	Adobe: Premiere Pro	Regan, P	X	3	3		2	1	3	0.1	\$ 842.34	100%	67%	33%	0.2
Digital Design	ADOBE020	Adobe: Illustrator	Regan, P	X	15	15		8	7	15	0.1	\$ 3,369.34	100%	53%	47%	0.8
Digital Design	ADOBE022	Adobe: Photoshop	Regan, P	X	51	51		13	38	51	0.1	\$ 5,475.18	100%	25%	75%	1.3
Digital Design	MICRO069	MOS Bundle	Regan, P	X	1	1		1	0	1	0.2	\$ 842.34	100%	100%	0%	0.2
Game/Simulation/Animation/Prog	TBOOM001	ToonBoom Harmony Premium	Regan, P	X	0	0		0	0	0	0.1	\$ -	0%	0%	0%	0.0
Game/Simulation/Animation/Prog	TBOOM003	ToonBoom Storyboard Pro	Regan, P	X	0	0		0	0	0	0.1	\$ -	0%	0%	0%	0.0
Criminal Justice Ops	NOCTI010	NOCTI - Criminal Justice	Shannon, M		19	19		16	3	19	0	\$ -	100%	84%	16%	0.0
Nursing Assistant	FDMQA002	C N A	Wardell, K	X	10	10		8	2	10	0.1	\$ 3,369.34	100%	80%	20%	0.8
Nursing Assistant		CPR/AED/BLS for Healthcare Providers	Wardell, K		10	10		10	0	10	0	\$ -	100%	100%	0%	0.0

2018-2019 Industry Certification Results

Rockledge High School

Program	Cert #	Assessment	Teacher of Record	School Grade	# Students Identified	# Participants	# In Progress	# Passing	# Failing	# Completing Participants	Funding Weights	Potential Funding \$	% Participants	% Passing	% Failing	Potential Bonus FTE Calculation
Nursing Assistant	FDMQA002	C N A	Bassile, T	X	15	15		13	2	15	0.1	\$ 5,475.18	100%	87%	13%	1.3
Nursing Assistant		CPR/AED/BLS for Healthcare Providers	Bassile, T		58	58		58	0	58	0	\$ -	100%	100%	0%	0.0
Criminal Justice Ops	NOCTI010	NOCTI - Criminal Justice	Diesel, S		27	27		24	3	27	0	\$ -	100%	89%	11%	0.0
Digital Media/Multi Media	ADOBE011	Adobe: Animate	Dougherty, K	X	4	4		2	2	4	0.2	\$ 1,684.67	100%	50%	50%	0.4
Digital Media/Multi Media	ADOBE018	Adobe: Premiere Pro	Dougherty, K	X	43	43		18	25	43	0.1	\$ 7,581.02	100%	42%	58%	1.8
Digital Media/Multi Media	ADOBE020	Adobe: Illustrator	Dougherty, K	X	30	30		21	9	30	0.1	\$ 8,844.52	100%	70%	30%	2.1
Digital Media/Multi Media	ADOBE021	Adobe: InDesign	Dougherty, K	X	51	51		22	29	51	0.1	\$ 9,265.69	100%	43%	57%	2.2
Digital Media/Multi Media	ADOBE022	Adobe: Photoshop	Dougherty, K	X	87	87		51	36	87	0.1	\$ 21,479.56	100%	59%	41%	5.1
Hospitality & Tourism Mgmt	ADOBE021	Adobe: InDesign	Kearns, L	X	12	12		9	3	12	0.1	\$ 3,790.51	100%	75%	25%	0.9
Hospitality & Tourism Mgmt	MICRO069	MOS Bundle	Kearns, L	X	13	13		8	5	13	0.2	\$ 6,738.68	100%	62%	38%	1.6
International Business	ADOBE021	Adobe: InDesign	Kearns, L	X	38	38		28	10	38	0.1	\$ 11,792.70	100%	74%	26%	2.8
International Business	MICRO069	MOS Bundle	Kearns, L	X	3	3		3	0	3	0.2	\$ 2,527.01	100%	100%	0%	0.6
Fashion Tech & Design Svcs	NOCTI003	NOCTI - Apparel & Text Prod & Mer	Pingston, L		13	13		10	3	13	0	\$ -	100%	77%	23%	0.0
Drafting	ADESK002	Autodesk - Certified User AutoCAD	Schooley, S	X	58	58		51	7	58	0.2	\$ 42,959.12	100%	88%	12%	10.2
Drafting	ADESK008	Autodesk - Certified User Revit	Schooley, S	X	54	54		9	45	54	0.2	\$ 7,581.02	100%	17%	83%	1.8
Drafting	ADESK011	Autodesk - Certified User Inventor	Schooley, S	X	15	15		9	6	15	0.2	\$ 7,581.02	100%	60%	40%	1.8
Drafting	ADESK021	Autodesk - Certified Professional AutoCAD	Schooley, S	X	3	3		2	1	3	0.2	\$ 1,684.67	100%	67%	33%	0.4
Auto Maint & Lt Repair	FLADA001	FLADA	Sebetka, E	X	0	0		0	0	0	0.1	\$ -	0%	0%	0%	0.0
Auto Maint & Lt Repair	NIASE077	ASE: Entry-Level Auto - Transmission/Trans Axle	Sebetka, E	X	0	0		0	0	0	0.1	\$ -	0%	0%	0%	0.0
Auto Maint & Lt Repair	NIASE078	ASE: Entry-Level Auto - Auto Svc Tech	Sebetka, E	X	1	1		0	1	1	0.1	\$ -	100%	0%	100%	0.0
Auto Maint & Lt Repair	NIASE079	ASE: Entry-Level Auto - Brakes	Sebetka, E	X	43	43		17	26	43	0.1	\$ 7,159.85	100%	40%	60%	1.7
Auto Maint & Lt Repair	NIASE080	ASE: Entry-Level Auto - Electrical/Electronic Systems	Sebetka, E	X	1	1		1	0	1	0.1	\$ 421.17	100%	100%	0%	0.1
Auto Maint & Lt Repair	NIASE081	ASE: Entry-Level Auto - Engine Performance	Sebetka, E	X	2	2		1	1	2	0.1	\$ 421.17	100%	50%	50%	0.1
Auto Maint & Lt Repair	NIASE082	ASE: Entry-Level Auto - Engine Repair	Sebetka, E	X	7	7		3	4	7	0.1	\$ 1,263.50	100%	43%	57%	0.3
Auto Maint & Lt Repair	NIASE083	ASE: Entry-Level Auto - Heating & Air Conditioning	Sebetka, E	X	3	3		3	0	3	0.1	\$ 1,263.50	100%	100%	0%	0.3
Auto Maint & Lt Repair	NIASE084	ASE: Entry-Level Auto - Manual Drive Train & Axles	Sebetka, E	X	1	1		1	0	1	0.1	\$ 421.17	100%	100%	0%	0.1
Auto Maint & Lt Repair	NIASE085	ASE: Entry-Level Auto - Suspension & Steering	Sebetka, E	X	18	18		7	11	18	0.1	\$ 2,948.17	100%	39%	61%	0.7
Web App Dev & Programming	MICRO069	MOS Bundle	VanBrunschoot, S	X	5	5		4	1	5	0.2	\$ 3,369.34	100%	80%	20%	0.8
Web App Dev & Programming	MICRO080	MTA - HTML5 Application Developer Fund	VanBrunschoot, S	X	9	9		4	5	9	0.2	\$ 3,369.34	100%	44%	56%	0.8
Web App Dev & Programming	MICRO104	MTA - Intro to Programming Using JavaScript	VanBrunschoot, S	X	1	1		1	0	1	0.2	\$ 842.34	100%	100%	0%	0.2
Web App Dev & Programming	MICRO105	MTA - Intro to Programming Using HTML & CSS	VanBrunschoot, S	X	10	10		8	2	10	0.1	\$ 3,369.34	100%	80%	20%	0.8

2018-2019 Industry Certification Results

Satellite High School

Program	Cert #	Assessment	Teacher of Record	School Grade	# Students Identified	# Participants	# Passing	# Failing	# Completing Participants	Funding Weights	Potential Funding \$	% Participants	% Passing	% Failing	Potential Bonus FTE Calculation
Admin Office Specialist	MICRO069	MOS Bundle	Brooks, L	X	31	31	27	4	31	0.2	\$ 22,743.06	100%	87%	13%	5.4
Digital Media/MultiMedia	ADOBE020	Adobe: Illustrator	Brooks, L	X	3	3	1	2	3	0.1	\$ 421.17	100%	33%	67%	0.1
Digital Media/MultiMedia	ADOBE022	Adobe: Photoshop	Brooks, L	X	8	8	0	8	8	0.1	\$ -	100%	0%	100%	0.0
Marketing Mgmt & Ent Prin	ADOBE021	Adobe: InDesign	Brooks, L	X	13	13	6	7	13	0.1	\$ 2,527.01	100%	46%	54%	0.6
Nutrition & Food Science	NRAEF003	ServSafe Manager	Doubek, R	X	8	8	5	3	8	0.2	\$ 4,211.68	100%	63%	38%	1.0
Digital Media/MultiMedia	ADOBE010	Adobe: Dreamweaver	Flinchbaugh, N	X	0	0	0	0	0	0.2	\$ -	0%	0%	0%	0.0
Digital Media/MultiMedia	ADOBE011	Adobe: Animate	Flinchbaugh, N	X	0	0	0	0	0	0.2	\$ -	0%	0%	0%	0.0
Digital Media/MultiMedia	ADOBE018	Adobe: Premiere Pro	Flinchbaugh, N	X	1	1	0	1	1	0.1	\$ -	100%	0%	100%	0.0
Digital Media/MultiMedia	ADOBE020	Adobe: Illustrator	Flinchbaugh, N	X	25	25	8	17	25	0.1	\$ 3,369.34	100%	32%	68%	0.8
Digital Media/MultiMedia	ADOBE021	Adobe: InDesign	Flinchbaugh, N	X	15	15	11	4	15	0.1	\$ 4,632.85	100%	73%	27%	1.1
Digital Media/MultiMedia	ADOBE022	Adobe: Photoshop	Flinchbaugh, N	X	31	31	13	18	31	0.1	\$ 5,475.18	100%	42%	58%	1.3
Fashion Tech & Design Svcs	ADOBE020	Adobe: Illustrator	Gray, J	X	13	13	8	5	13	0.1	\$ 3,369.34	100%	62%	38%	0.8
Fashion Tech & Design Svcs	NOCTI003	NOCTI - Apparel & Text Prod & Mer	Gray, J		9	9	8	1	9	0	\$ -	100%	89%	11%	0.0
Technical Design	ADESK002	Autodesk - Certified User AutoCAD	Kimbrell, R	X	29	29	27	2	29	0.2	\$ 22,743.06	100%	93%	7%	5.4
Technical Design	ADESK008	Autodesk - Certified User Revit	Kimbrell, R	X	42	42	17	25	42	0.2	\$ 14,319.71	100%	40%	60%	3.4
Technical Design	ADESK011	Autodesk - Certified User Inventor	Kimbrell, R	X	2	2	1	1	2	0.2	\$ 842.34	100%	50%	50%	0.2
Technical Design	ADESK021	Autodesk - Certified Professional AutoCAD	Kimbrell, R	X	7	7	1	6	7	0.2	\$ 842.34	100%	14%	86%	0.2
Auto Maint & Lt Repair	FLADA001	FLADA	Pitts, R	X	0	0	0	0	0	0.1	\$ -	0%	0%	0%	0.0
Auto Maint & Lt Repair	NIASE077	ASE: Entry-Level Auto - Transmission/Trans Axle	Pitts, R	X	3	3	1	2	3	0.1	\$ 421.17	100%	33%	67%	0.1
Auto Maint & Lt Repair	NIASE078	ASE: Entry-Level Auto - Auto Svc Tech	Pitts, R	X	1	1	1	0	1	0.1	\$ 421.17	100%	100%	0%	0.1
Auto Maint & Lt Repair	NIASE079	ASE: Entry-Level Auto - Brakes	Pitts, R	X	16	16	8	8	16	0.1	\$ 3,369.34	100%	50%	50%	0.8
Auto Maint & Lt Repair	NIASE080	ASE: Entry-Level Auto - Electrical/Electronic System	Pitts, R	X	3	3	1	2	3	0.1	\$ 421.17	100%	33%	67%	0.1
Auto Maint & Lt Repair	NIASE081	ASE: Entry-Level Auto - Engine Performance	Pitts, R	X	3	3	1	2	3	0.1	\$ 421.17	100%	33%	67%	0.1
Auto Maint & Lt Repair	NIASE082	ASE: Entry-Level Auto - Engine Repair	Pitts, R	X	34	34	9	25	34	0.1	\$ 3,790.51	100%	26%	74%	0.9
Auto Maint & Lt Repair	NIASE083	ASE: Entry-Level Auto - Heating & Air Conditioning	Pitts, R	X	3	3	1	2	3	0.1	\$ 421.17	100%	33%	67%	0.1
Auto Maint & Lt Repair	NIASE084	ASE: Entry-Level Auto - Manual Drive Train & Axles	Pitts, R	X	1	1	1	0	1	0.1	\$ 421.17	100%	100%	0%	0.1
Auto Maint & Lt Repair	NIASE085	ASE: Entry-Level Auto - Suspension & Steering	Pitts, R	X	35	35	13	22	35	0.1	\$ 5,475.18	100%	37%	63%	1.3
Early Childhood Education	CPREC001	Child Development Associate	Schmid, M	X	7	7	7	0	7	0.2	\$ 5,896.35	100%	100%	0%	1.4
Early Childhood Education	FLDCF004	Intro to Childcare Training Certificate	Schmid, M		10	10	6	4	10	0	\$ -	100%	60%	40%	0.0
Early Childhood Education	FLDCF005	Staff Credential	Schmid, M		10	10	10	0	10	0	\$ -	100%	100%	0%	0.0
Early Childhood Education		CPR/First Aid	Schmid, M		10	10	10	0	10	0	\$ -	100%	100%	0%	0.0

2018-2019 Industry Certification Results

Space Coast Jr/Sr High School High School

Program	Cert #	Assessment	Teacher of Record	School Grade	# Students Identified	# Participants	# In Progress	# Passing	# Failing	# Completing Participants	Funding Weights	Potential Funding \$	% Participants	% Passing	% Failing	Potential Bonus FTE Calculation
TV Production Tech	ADOBE018	Adobe: Premiere Pro	Dietz, R	X	45	45		20	25	45	0.1	\$ 8,423.36	100%	44%	56%	2.000
Teacher Assisting	EDTSO001	ParaPro	Drabik, F		7	7		7	0	7	0	\$ -	100%	100%	0%	0.000
Drafting	ADESK002	Autodesk - Certified User AutoCAD	Gannon, C	X	58	58		58	0	58	0.2	\$ 48,855.46	100%	100%	0%	11.600
Drafting	ADESK008	Autodesk - Certified User Revit	Gannon, C	X	14	14		9	5	14	0.2	\$ 7,581.02	100%	64%	36%	1.800
Drafting	ADESK011	Autodesk - Certified User Inventor	Gannon, C	X	18	18		17	1	18	0.2	\$ 14,319.71	100%	94%	6%	3.400
Drafting	ADESK021	Autodesk - Certified Professional AutoCAD	Gannon, C	X	10	10		9	1	10	0.2	\$ 7,581.02	100%	90%	10%	1.800
Digital Media/Multi Media	ADOBE021	Adobe: InDesign	Harlan, C	X	4	4		0	4	4	0.1	\$ -	100%	0%	100%	0.000
Digital Media/Multi Media	ADOBE022	Adobe: Photoshop	Harlan, C	X	46	46		20	26	46	0.1	\$ 8,423.36	100%	43%	57%	2.000
Digital Media/Multi Media	MICRO069	MOS Bundle	Harlan, C	X	11	11		11	0	11	0.2	\$ 9,265.69	100%	100%	0%	2.200
Nutrition & Food Science	NRAEF003	ServSafe Manager	Michell, D	X	8	8		3	5	8	0.2	\$ 2,527.01	100%	38%	63%	0.600
A/C Refrigeration & Heating Tech	HBINS002	Homebuilder's PAC	Mount, W	X	0	0		0	0	0	0.1	\$ -	0%	0%	0%	0.000
A/C Refrigeration & Heating Tech	HVACE002	HVAC Excellence - A/C	Mount, W	X	17	17		17	0	17	0.2	\$ 14,319.71	100%	100%	0%	3.400
A/C Refrigeration & Heating Tech	HVACE011	HVAC Excellence - Electrical	Mount, W	X	20	20		20	0	20	0.2	\$ 16,846.71	100%	100%	0%	4.000
A/C Refrigeration & Heating Tech	NATEX001	NATE	Mount, W	X	0	0		0	0	0	0.2	\$ -	0%	0%	0%	0.000
A/C Refrigeration & Heating Tech	NCCER018	NCCER	Mount, W	X	14	14		14	0	14	0.2	\$ 11,792.70	100%	100%	0%	2.800
Applied Engineering Tech	SOLID003	Solidworks	Reyes, L	X	12	12		10	2	12	0.2	\$ 8,423.36	100%	83%	17%	2.000
Admin Office Specialist	ADOBE020	Adobe: Illustrator	Stoppelbein, A	X	1	1		0	1	1	0.1	\$ -	100%	0%	100%	0.000
Admin Office Specialist	MICRO017	MS Office Master	Stoppelbein, A	X	2	2		1	1	2	0.2	\$ 842.34	100%	50%	50%	0.200
Admin Office Specialist	MICRO069	MOS Bundle	Stoppelbein, A	X	28	28		27	1	28	0.2	\$ 22,743.06	100%	96%	4%	5.400

2018-2019 Industry Certification Results

Titusville High School

Program	Cert #	Assessment	Teacher of Record	School Grade	# Students Identified	# Participants	# In Progress	# Passing	# Failing	# Completing Participants	Funding Weights	Potential Funding \$	% Participants	% Passing	% Failing	Potential Bonus FTE Calculation
Digital Design	ADOBE010	Adobe: Dreamweaver	Benson, A	X	0	0		0	0	0	0.2	\$0.00	0%	0%	0%	0.0
Digital Design	ADOBE011	Adobe: Animate	Benson, A	X	6	6		2	4	6	0.2	\$1,684.67	100%	33%	67%	0.4
Digital Design	ADOBE018	Adobe: Premiere Pro	Benson, A	X	15	15		14	1	15	0.1	\$5,896.35	100%	93%	7%	1.4
Digital Design	ADOBE020	Adobe: Illustrator	Benson, A	X	18	18		16	2	18	0.1	\$6,738.68	100%	89%	11%	1.6
Digital Design	ADOBE021	Adobe: InDesign	Benson, A	X	31	31		28	3	31	0.1	\$11,792.70	100%	90%	10%	2.8
Digital Design	ADOBE022	Adobe: Photoshop	Benson, A	X	60	60		55	5	60	0.1	\$23,164.23	100%	92%	8%	5.5
Embry Riddle Dual Enrollment	USINS001	Small UAS Safety Certification	Chatman	X	0	0		0	0	0	0.2	\$0.00	0%	0%	0%	0.0
TV Production Tech	ADOBE018	Adobe: Premiere Pro	Curtis, B	X	55	55		14	41	55	0.1	\$5,896.35	100%	25%	75%	1.4
Auto Maint & Lt Repair	FLADA001	FLADA	Duvall, R	X	0	0		0	0	0	0.1	\$0.00	0%	0%	0%	0.0
Auto Maint & Lt Repair	NIASE077	ASE: Entry-Level Auto - Transmission/Trans Axle	Duvall, R	X	0	0		0	0	0	0.1	\$0.00	0%	0%	0%	0.0
Auto Maint & Lt Repair	NIASE078	ASE: Entry-Level Auto - Auto Svc Tech	Duvall, R	X	0	0		0	0	0	0.1	\$0.00	0%	0%	0%	0.0
Auto Maint & Lt Repair	NIASE079	ASE: Entry-Level Auto - Brakes	Duvall, R	X	9	9		4	5	9	0.1	\$1,684.67	100%	44%	56%	0.4
Auto Maint & Lt Repair	NIASE080	ASE: Entry-Level Auto - Electrical/Electronic Systems	Duvall, R	X	0	0		0	0	0	0.1	\$0.00	0%	0%	0%	0.0
Auto Maint & Lt Repair	NIASE081	ASE: Entry-Level Auto - Engine Performance	Duvall, R	X	0	0		0	0	0	0.1	\$0.00	0%	0%	0%	0.0
Auto Maint & Lt Repair	NIASE082	ASE: Entry-Level Auto - Engine Repair	Duvall, R	X	0	0		0	0	0	0.1	\$0.00	0%	0%	0%	0.0
Auto Maint & Lt Repair	NIASE083	ASE: Entry-Level Auto - Heating & Air Conditioning	Duvall, R	X	0	0		0	0	0	0.1	\$0.00	0%	0%	0%	0.0
Auto Maint & Lt Repair	NIASE084	ASE: Entry-Level Auto - Manual Drive Train & Axles	Duvall, R	X	0	0		0	0	0	0.1	\$0.00	0%	0%	0%	0.0
Auto Maint & Lt Repair	NIASE085	ASE: Entry-Level Auto - Suspension & Steering	Duvall, R	X	0	0		0	0	0	0.1	\$0.00	0%	0%	0%	0.0
Web Development	ADOBE010	Adobe: Dreamweaver	Ely, K	X	6	6		3	3	6	0.2	\$2,527.01	100%	50%	50%	0.6
Web Development	ADOBE011	Adobe: Animate	Ely, K	X	8	8		6	2	8	0.2	\$5,054.01	100%	75%	25%	1.2
Web Development	ADOBE018	Adobe: Premiere Pro	Ely, K	X	6	6		6	0	6	0.1	\$2,527.01	100%	100%	0%	0.6
Web Development	ADOBE021	Adobe: InDesign	Ely, K	X	1	1		0	1	1	0.1	\$0.00	100%	0%	100%	0.0
Web Development	ADOBE022	Adobe: Photoshop	Ely, K	X	21	21		20	1	21	0.1	\$8,423.36	100%	95%	5%	2.0
Digital Design	ADOBE011	Adobe: Animate	Ely, K	X	1	1		1	0	1	0.2	\$842.34	100%	100%	0%	0.2
Digital Design	ADOBE018	Adobe: Premiere Pro	Ely, K	X	5	5		5	0	5	0.1	\$2,105.84	100%	100%	0%	0.5
Digital Design	ADOBE020	Adobe: Illustrator	Ely, K	X	7	7		6	1	7	0.1	\$2,527.01	100%	86%	14%	0.6
Digital Design	ADOBE021	Adobe: InDesign	Ely, K	X	19	19		14	5	19	0.1	\$5,896.35	100%	74%	26%	1.4
Digital Design	ADOBE022	Adobe: Photoshop	Ely, K	X	22	22		14	8	22	0.1	\$5,896.35	100%	64%	36%	1.4
Digital Design	ADOBE018	Adobe: Premiere Pro	Gilreath, K	X	1	1		1	0	1	0.1	\$421.17	100%	100%	0%	0.1
Digital Design	ADOBE020	Adobe: Illustrator	Gilreath, K	X	2	2		2	0	2	0.1	\$842.34	100%	100%	0%	0.2
Digital Design	ADOBE021	Adobe: InDesign	Gilreath, K	X	1	1		1	0	1	0.1	\$421.17	100%	100%	0%	0.1
Digital Design	ADOBE022	Adobe: Photoshop	Gilreath, K	X	47	47		26	21	47	0.1	\$10,950.36	100%	55%	45%	2.6
Digital Info Tech	MICRO069	MOS Bundle	Gilreath, K	X	0	0		0	0	0	0.2	\$0.00	0%	0%	0%	0.0
Nursing Assistant	FDMQA002	C N A	Hall, C	X	21	21		20	1	21	0.1	\$8,423.36	100%	95%	5%	2.0
Nursing Assistant		CPR/AED/BLS for Healthcare Providers	Hall, C		22	22		22	0	22	0	\$0.00	100%	100%	0%	0.0
Fashion Tech & Design Svcs	ADOBE020	Adobe: Illustrator	Jones, D	X	10	10		2	8	10	0.1	\$842.34	100%	20%	80%	0.2
Fashion Tech & Design Svcs	ADOBE022	Adobe: Photoshop	Jones, D	X	2	2		0	2	2	0.1	\$0.00	100%	0%	100%	0.0
Fashion Tech & Design Svcs	NOCTI003	NOCTI - Apparel & Text Prod & Mer	Jones, D		0	0		0	0	0	0	\$0.00	0%	0%	0%	0.0
Culinary Arts	FRALA001	SafeStaff Food Handler Certification	Noble, M		112	112		112	0	112	0	\$0.00	100%	100%	0%	0.0
Culinary Arts	NRAEF003	ServSafe Manager	Noble, M	X	35	35		12	23	35	0.2	\$10,108.03	100%	34%	66%	2.4
Nursing Assistant		CPR/AED/BLS for Healthcare Providers	Shimer, T		31	31		31	0	31	0	\$0.00	100%	100%	0%	0.0
Digital Info Tech	MICRO017	MS Office Master	Siems, L	X	1	1		1	0	1	0.2	\$842.34	100%	100%	0%	0.2
Digital Info Tech	MICRO069	MOS Bundle	Siems, L	X	56	56		52	4	56	0.2	\$43,801.45	100%	93%	7%	10.4
Digital Info Tech	MICRO069	MOS Bundle	Summy-Brown	X	0	0		0	0	0	0.2	\$0.00	0%	0%	0%	0.0

2018-2019 Industry Certification Results

Viera High School

Program	Cert #	Assessment	Teacher of Record	School Grade	# Students Identified	# Participants	# In Progress	# Passing	# Failing	# Completing Participants	Funding Weights	Potential Funding \$	% Participants	% Passing	% Failing	Potential Bonus FTE Calculation
Early Childhood Education	CPREC001	Child Development Associate	Anderson, P	X	3	3		3	0	3	0.2	\$ 2,527.01	100%	100%	0%	0.6
Early Childhood Education	FLDCF004	Intro to Childcare Training Certificate	Anderson, P		15	15		8	7	15	0	\$ -	100%	53%	47%	0.0
Early Childhood Education	FLDCF005	Staff Credential	Anderson, P		15	15		15	0	15	0	\$ -	100%	100%	0%	0.0
Early Childhood Education		CPR/First Aid	Anderson, P		12	12		12	0	12	0	\$ -	100%	100%	0%	0.0
Digital Media/MultiMedia	ADOBE010	Adobe: Dreamweaver	Cole, M	X	1	1		0	1	1	0.2	\$ -	100%	0%	100%	0.0
Digital Media/MultiMedia	ADOBE011	Adobe: Animate	Cole, M	X	2	2		2	0	2	0.2	\$ 1,684.67	100%	100%	0%	0.4
Digital Media/MultiMedia	ADOBE018	Adobe: Premiere Pro	Cole, M	X	40	40		31	9	40	0.1	\$ 13,056.20	100%	78%	23%	3.1
Digital Media/MultiMedia	ADOBE020	Adobe: Illustrator	Cole, M	X	3	3		2	1	3	0.1	\$ 842.34	100%	67%	33%	0.2
Digital Media/MultiMedia	ADOBE021	Adobe: InDesign	Cole, M	X	37	37		33	4	37	0.1	\$ 13,898.54	100%	89%	11%	3.3
Digital Media/MultiMedia	ADOBE022	Adobe: Photoshop	Cole, M	X	62	62		40	22	62	0.1	\$ 16,846.71	100%	65%	35%	4.0
Web App Dev & Programming	MICRO080	MTA - HTML5 Application Developer Fund	Dohmen	X	53	53		48	5	53	0.2	\$ 40,432.11	100%	91%	9%	9.6
Web App Dev & Programming	MICRO105	MTA - Intro to Programming Using HTML & CSS	Dohmen	X	53	53		49	4	53	0.1	\$ 20,637.22	100%	92%	8%	4.9
Digital Media/MultiMedia	ADOBE020	Adobe: Illustrator	Hicks, S	X	60	60		37	23	60	0.1	\$ 15,583.21	100%	62%	38%	3.7
Digital Media/MultiMedia	ADOBE021	Adobe: InDesign	Hicks, S	X	9	9		6	3	9	0.1	\$ 2,527.01	100%	67%	33%	0.6
Digital Media/MultiMedia	ADOBE022	Adobe: Photoshop	Hicks, S	X	78	78		53	25	78	0.1	\$ 22,321.89	100%	68%	32%	5.3
Interior/Fashion Design Svcs	ADOBE018	Adobe: Premiere Pro	Humphrys, C	X	2	2		1	1	2	0.1	\$ 421.17	100%	50%	50%	0.1
Interior/Fashion Design Svcs	ADOBE020	Adobe: Illustrator	Humphrys, C	X	21	21		7	14	21	0.1	\$ 2,948.17	100%	33%	67%	0.7
Interior/Fashion Design Svcs	ADOBE022	Adobe: Photoshop	Humphrys, C	X	8	8		5	3	8	0.1	\$ 2,105.84	100%	63%	38%	0.5
Interior/Fashion Design Svcs	CARCH002	Chief Architect	Humphrys, C	X	10	10		6	4	10	0.2	\$ 5,054.01	100%	60%	40%	1.2
Exercise Science (Dental)	NATHA003	CMAA	Johnston, F	X	32	32		32	0	32	0.1	\$ 13,477.37	100%	100%	0%	3.2
Exercise Science (Dental)		CPR/AED/BLS for Healthcare Providers	Johnston, F		31	31		31	0	31	0	\$ -	100%	100%	0%	0.0
Finance Academy	MICRO069	MOS Bundle	Ryberg, A	X	30	30		17	13	30	0.2	\$ 14,319.71	100%	57%	43%	3.4
Nutrition & Food Science	NRAEF003	ServSafe Manager	Scholle, L	X	37	37		30	7	37	0.2	\$ 25,270.07	100%	81%	19%	6.0
TV Production Tech	ADOBE018	Adobe: Premiere Pro	Sivco, L	X	42	42		25	17	42	0.1	\$ 10,529.20	100%	60%	40%	2.5
Digital Info Tech	MICRO069	MOS Bundle	Vacca, J	X	25	25		18	7	25	0.2	\$ 15,162.04	100%	72%	28%	3.6
Finance Academy	INTUT001	Quickbooks	Vacca, J	X	35	35		1	34	35	0.2	\$ 842.34	100%	3%	97%	0.2

2018-2019 Industry Certification Results

West Shore High School

Program	Cert #	Assessment	Teacher of Record	School Grade	# Students Identified	# Participants	# In Progress	# Passing	# Failing	# Completing Participants	Funding Weights	Potential Funding \$	% Participants	% Passing	% Failing	Potential Bonus FTE Calculation
Digital Photography	ADOBE022	Adobe: Photoshop	Finch	X	14	14		4	10	14	0.1	\$1,684.67	100%	29%	71%	0.4

2018-2019 Industry Certification Results

Other High Schools

School	Program	Cert #	Assessment	Teacher of Record	School Grade	# Students Identified	# Participants	# In Progress	# Passing	# Failing	# Completing Participants	Funding Weights	Potential Funding \$	% Participants	% Passing	% Failing	Potential Bonus FTE Calculation
Melb Ctr Pers Grwth	Culinary Arts	NRAEF003	ServSafe Manager	Descoteaux, M	X	0	0	0	0	0	0	0.2	\$ -	0%	0%	0%	0.0
Melb Ctr Pers Grwth	Culinary Arts	NATHA002	Certified EKG Tech (CET)	Descoteaux, M	X	0	0		0	0	0	0.1	\$ -	0%	0%	0%	0.0
Brevard Virtual	Digital Info Tech	MICRO069	MOS Bundle	Chisholm, C	X	2	2		2	0	2	0.2	\$1,684.67	100%	100%	0%	0.4
Odyssey Charter	Introd Engr Design	ADESK002	Autodesk: AutoCAD	Grimaldi, R	X	0	0		0	0	0	0.2	\$ -	0%	0%	0%	0.0
Odyssey Charter	Introd Engr Design	ADESK011	Autodesk: Inventor	Grimaldi, R	X	0	0		0	0	0	0.2	\$ -	0%	0%	0%	0.0
Odyssey Charter	Digital Art Img	ADOBE022	Adobe: Photoshop	Warren, K	X	10	10		0	10	10	0.1	\$ -	100%	0%	100%	0.0

This page intentionally left blank.

Industry Certification Results By Middle/Jr. High School



This page intentionally left blank.

2018-2019 Industry Certification Results

Central Middle School

Program	Cert #	Assessment	Teacher of Record	School Grade	# Students Identified	# Participants	# In Progress/Didn't Test	# Passing	# Failing	# Completing Participants	Funding Weights	Potential Funding \$	% Participants	% Passing	% Failing	Potential Bonus FTE Calculation
MS Business	PROSO801	ICT - Database Essentials	Berryman, M		0	0		0	0	0	0.025	\$ -	0%	0%	0%	0.000
MS Business	PROSO802	ICT - Gaming Essentials	Berryman, M		0	0		0	0	0	0.025	\$ -	0%	0%	0%	0.000
MS Business	PROSO803	ICT - Multimedia Essentials	Berryman, M		130	130		98	32	130	0.025	\$10,318.61	100%	75%	25%	2.450
MS Business	PROSO804	ICT - Program & Logic Essentials	Berryman, M		0	0		0	0	0	0.025	\$ -	0%	0%	0%	0.000
MS Business	PROSO805	ICT - Web Design Essentials	Berryman, M		0	0		0	0	0	0.025	\$ -	0%	0%	0%	0.000
MS Business	PROSO806	ICT - Communications Essentials	Berryman, M		0	0		0	0	0	0.025	\$ -	0%	0%	0%	0.000
MS Business	PROSO807	ICT - Computing Essentials	Berryman, M		0	0		0	0	0	0.025	\$ -	0%	0%	0%	0.000
MS Business	PROSO808	ICT - Cyber Security Essentials	Berryman, M		68	68		65	3	68	0.025	\$ 6,843.98	100%	96%	4%	1.625
MS Business	PROSO809	ICT - Spreadsheet Essentials	Berryman, M		327	327		251	76	327	0.025	\$26,428.28	100%	77%	23%	6.275
MS Business	PROSO810	ICT - Word Processing Essentials	Berryman, M		231	231		137	94	231	0.025	\$14,425.00	100%	59%	41%	3.425
MS Coding	PROSO801	ICT - Database Essentials	Hrkach, D		1	1		1	0	1	0.025	\$ 105.29	100%	100%	0%	0.025
MS Coding	PROSO802	ICT - Gaming Essentials	Hrkach, D		93	93		76	17	93	0.025	\$ 8,002.19	100%	82%	18%	1.900
MS Coding	PROSO803	ICT - Multimedia Essentials	Hrkach, D		5	5		4	1	5	0.025	\$ 421.17	100%	80%	20%	0.100
MS Coding	PROSO804	ICT - Program & Logic Essentials	Hrkach, D		92	92		66	26	92	0.025	\$ 6,949.27	100%	72%	28%	1.650
MS Coding	PROSO805	ICT - Web Design Essentials	Hrkach, D		20	20		9	11	20	0.025	\$ 947.63	100%	45%	55%	0.225
MS Coding	PROSO806	ICT - Communications Essentials	Hrkach, D		84	84		80	4	84	0.025	\$ 8,423.36	100%	95%	5%	2.000
MS Coding	PROSO807	ICT - Computing Essentials	Hrkach, D		83	83		61	22	83	0.025	\$ 6,422.81	100%	73%	27%	1.525
MS Coding	PROSO808	ICT - Cyber Security Essentials	Hrkach, D		19	19		19	0	19	0.025	\$ 2,000.55	100%	100%	0%	0.475
MS Coding	PROSO809	ICT - Spreadsheet Essentials	Hrkach, D		2	2		1	1	2	0.025	\$ 105.29	100%	50%	50%	0.025
MS Coding	PROSO810	ICT - Word Processing Essentials	Hrkach, D		1	1		1	0	1	0.025	\$ 105.29	100%	100%	0%	0.025
			Digital Tools		1156	1156		869	287	1156		\$91,498.70	100%	75%	25%	21.725
MS Business	MICRO017	MS Office Master	Hrkach, D	X	0	0		0	0	0	0.100	\$ -	0%	0%	0%	0.000
MS Business	MICRO069	MOS Bundle	Hrkach, D	X	62	62		37	25	62	0.100	\$15,583.21	100%	60%	40%	3.700
			Certifications		62	62		37	25	62		\$15,583.21	100%	60%	40%	3.700

2018-2019 Industry Certification Results

Cocoa High School

Program	Cert #	Assessment	Teacher of Record	School Grade	# Students Identified	# Participants	# In Progress/Didn't Test	# Passing	# Failing	# Completing Participants	Funding Weights	Potential Funding \$	% Participants	% Passing	% Failing	Potential Bonus FTE Calculation
MS Business	PROSO801	ICT - Database Essentials	Ocker, D		0	0		0	0	0	0.025	\$ -	0%	0%	0%	0.000
MS Business	PROSO802	ICT - Gaming Essentials	Ocker, D		36	36		22	14	36	0.025	\$ 2,316.42	100%	61%	39%	0.550
MS Business	PROSO803	ICT - Multimedia Essentials	Ocker, D		38	38		33	5	38	0.025	\$ 3,474.63	100%	87%	13%	0.825
MS Business	PROSO804	ICT - Program & Logic Essentials	Ocker, D		0	0		0	0	0	0.025	\$ -	0%	0%	0%	0.000
MS Business	PROSO805	ICT - Web Design Essentials	Ocker, D		17	17		7	10	17	0.025	\$ 737.04	100%	41%	59%	0.175
MS Business	PROSO806	ICT - Communications Essentials	Ocker, D		0	0		0	0	0	0.025	\$ -	0%	0%	0%	0.000
MS Business	PROSO807	ICT - Computing Essentials	Ocker, D		0	0		0	0	0	0.025	\$ -	0%	0%	0%	0.000
MS Business	PROSO808	ICT - Cyber Security Essentials	Ocker, D		47	47		44	3	47	0.025	\$ 4,632.85	100%	94%	6%	1.100
MS Business	PROSO809	ICT - Spreadsheet Essentials	Ocker, D		84	84		48	36	84	0.025	\$ 5,054.01	100%	57%	43%	1.200
MS Business	PROSO810	ICT - Word Processing Essentials	Ocker, D		40	40		28	12	40	0.025	\$ 2,948.17	100%	70%	30%	0.700
			Digital Tools		262	262		182	80	262		\$19,163.13	100%	69%	31%	4.55
MS Business	MICRO017	MS Office Master	Nauman, J	X	0	0		0	0	0	0.100	\$ -	0%	0%	0%	0.000
MS Business	MICRO069	MOS Bundle	Nauman, J	X	24	24		18	6	24	0.100	\$ 7,581.02	100%	75%	25%	1.800
			Certifications		24	24		18	6	24		\$ 7,581.02	100%	75%	25%	1.800

2018-2019 Industry Certification Results

Cocoa Beach Jr./Sr. High School

Program	Cert #	Assessment	Teacher of Record	School Grade	# Students Identified	# Participants	# In Progress/Didn't Test	# Passing	# Failing	# Completing Participants	Funding Weights	Potential Funding \$	% Participants	% Passing	% Failing	Potential Bonus FTE Calculation
MS Business	PROSO801	ICT - Database Essentials	Brown-Turner, J		0	0		0	0	0	0.025	\$ -	0%	0%	0%	0.000
MS Business	PROSO802	ICT - Gaming Essentials	Brown-Turner, J		10	10		7	3	10	0.025	\$ 737.04	100%	70%	30%	0.175
MS Business	PROSO803	ICT - Multimedia Essentials	Brown-Turner, J		1	1		0	1	1	0.025	\$ -	100%	0%	100%	0.000
MS Business	PROSO804	ICT - Program & Logic Essentials	Brown-Turner, J		2	2		1	1	2	0.025	\$ 105.29	100%	50%	50%	0.025
MS Business	PROSO805	ICT - Web Design Essentials	Brown-Turner, J		4	4		1	3	4	0.025	\$ 105.29	100%	25%	75%	0.025
MS Business	PROSO806	ICT - Communications Essentials	Brown-Turner, J		61	61		45	16	61	0.025	\$ 4,738.14	100%	74%	26%	1.125
MS Business	PROSO807	ICT - Computing Essentials	Brown-Turner, J		0	0		0	0	0	0.025	\$ -	0%	0%	0%	0.000
MS Business	PROSO808	ICT - Cyber Security Essentials	Brown-Turner, J		7	7		5	2	7	0.025	\$ 526.46	100%	71%	29%	0.125
MS Business	PROSO809	ICT - Spreadsheet Essentials	Brown-Turner, J		117	117		53	64	117	0.025	\$ 5,580.47	100%	45%	55%	1.325
MS Business	PROSO810	ICT - Word Processing Essentials	Brown-Turner, J		57	57		22	35	57	0.025	\$ 2,316.42	100%	39%	61%	0.550
			Digital Tools		259	259		134	125	259		\$14,109.12	100%	52%	48%	3.350
MS Business	MICRO017	MS Office Master	Brown-Turner, J	X	0	0		0	0	0	0.100	\$ -	0%	0%	0%	0.000
MS Business	MICRO069	MOS Bundle	Brown-Turner, J	X	8	8		4	4	8	0.100	\$ 1,684.67	100%	50%	50%	0.400
MS Business	MICRO017	MS Office Master	Kimball, J	X	0	0		0	0	0	0.100	\$ -	0%	0%	0%	0.000
MS Business	MICRO069	MOS Bundle	Kimball, J	X	49	49		34	15	49	0.100	\$14,319.71	100%	69%	31%	3.400
MS Business	MICRO017	MS Office Master	Moore, W	X	0	0		0	0	0	0.100	\$ -	0%	0%	0%	0.000
MS Business	MICRO069	MOS Bundle	Moore, W	X	12	12		11	1	12	0.100	\$ 4,632.85	100%	92%	8%	1.100
			Certifications		69	69		49	20	69		\$20,637.22	100%	71%	29%	4.900

2018-2019 Industry Certification Results

DeLaura Middle School

Program	Cert #	Assessment	Teacher of Record	School Grade	# Students Identified	# Participants	# In Progress/Didn't Test	# Passing	# Failing	# Completing Participants	Funding Weights	Potential Funding \$	% Participants	% Passing	% Failing	Potential Bonus FTE Calculation
MS Business	PROSO801	ICT - Database Essentials	Bryant, J		0	0		0	0	0	0.025	\$ -	0%	0%	0%	0.000
MS Business	PROSO802	ICT - Gaming Essentials	Bryant, J		0	0		0	0	0	0.025	\$ -	0%	0%	0%	0.000
MS Business	PROSO803	ICT - Multimedia Essentials	Bryant, J		0	0		0	0	0	0.025	\$ -	0%	0%	0%	0.000
MS Business	PROSO804	ICT - Program & Logic Essentials	Bryant, J		0	0		0	0	0	0.025	\$ -	0%	0%	0%	0.000
MS Business	PROSO805	ICT - Web Design Essentials	Bryant, J		0	0		0	0	0	0.025	\$ -	0%	0%	0%	0.000
MS Business	PROSO806	ICT - Communications Essentials	Bryant, J		0	0		0	0	0	0.025	\$ -	0%	0%	0%	0.000
MS Business	PROSO807	ICT - Computing Essentials	Bryant, J		0	0		0	0	0	0.025	\$ -	0%	0%	0%	0.000
MS Business	PROSO808	ICT - Cyber Security Essentials	Bryant, J		0	0		0	0	0	0.025	\$ -	0%	0%	0%	0.000
MS Business	PROSO809	ICT - Spreadsheet Essentials	Bryant, J		152	152		107	45	152	0.025	\$11,266.24	100%	70%	30%	2.675
MS Business	PROSO810	ICT - Word Processing Essentials	Bryant, J		27	27		25	2	27	0.025	\$ 2,632.30	100%	93%	7%	0.625
			Digital Tools		179	179		132	47	179		\$13,898.54	100%	74%	26%	3.300
MS Business	MICRO017	MS Office Master	Bryant, J	X	0	0		0	0	0	0.100	\$ -	0%	0%	0%	0.000
MS Business	MICRO069	MOS Bundle	Bryant, J	X	20	20		16	4	20	0.100	\$ 6,738.68	100%	80%	20%	1.600
			Certifications		20	20		16	4	20		\$ 6,738.68	100%	80%	20%	1.600

2018-2019 Industry Certification Results

Edgewood Junior High School

Program	Cert #	Assessment	Teacher of Record	School Grade	# Students Identified	# Participants	# In Progress/Didn't Test	# Passing	# Failing	# Completing Participants	Funding Weights	Potential Funding \$	% Participants	% Passing	% Failing	Potential Bonus FTE Calculation
MS Business	PROSO801	ICT - Database Essentials	Vickers, P		0	0		0	0	0	0.025	\$ -	0%	0%	0%	0.000
MS Business	PROSO802	ICT - Gaming Essentials	Vickers, P		0	0		0	0	0	0.025	\$ -	0%	0%	0%	0.000
MS Business	PROSO803	ICT - Multimedia Essentials	Vickers, P		0	0		0	0	0	0.025	\$ -	0%	0%	0%	0.000
MS Business	PROSO804	ICT - Program & Logic Essentials	Vickers, P		0	0		0	0	0	0.025	\$ -	0%	0%	0%	0.000
MS Business	PROSO805	ICT - Web Design Essentials	Vickers, P		0	0		0	0	0	0.025	\$ -	0%	0%	0%	0.000
MS Business	PROSO806	ICT - Communications Essentials	Vickers, P		0	0		0	0	0	0.025	\$ -	0%	0%	0%	0.000
MS Business	PROSO807	ICT - Computing Essentials	Vickers, P		0	0		0	0	0	0.025	\$ -	0%	0%	0%	0.000
MS Business	PROSO808	ICT - Cyber Security Essentials	Vickers, P		0	0		0	0	0	0.025	\$ -	0%	0%	0%	0.000
MS Business	PROSO809	ICT - Spreadsheet Essentials	Vickers, P		0	0		0	0	0	0.025	\$ -	0%	0%	0%	0.000
MS Business	PROSO810	ICT - Word Processing Essentials	Vickers, P		0	0		0	0	0	0.025	\$ -	0%	0%	0%	0.000
			Digital Tools		0	0		0	0	0		\$ -	0%	0%	0%	0.000
MS Business	MICRO017	MS Office Master	Vickers, P	X	0	0		0	0	0	0.100	\$ -	0%	0%	0%	0.000
MS Business	MICRO069	MOS Bundle	Vickers, P	X	13	13		11	2	13	0.100	\$4,632.85	100%	85%	15%	1.100
			Certifications		13	13		11	2	13		\$4,632.85	100%	85%	15%	1.100

2018-2019 Industry Certification Results

Hoover Middle School

Program	Cert #	Assessment	Teacher of Record	School Grade	# Students Identified	# Participants	# In Progress	# Passing	# Failing	# Completing Participants	Funding Weights	Potential Funding \$	% Participants	% Passing	% Failing	Potential Bonus FTE Calculation
MS Business	PROSO801	ICT - Database Essentials	Weaver, M		0	0		0	0	0	0.025	\$ -	0%	0%	0%	0.000
MS Business	PROSO802	ICT - Gaming Essentials	Weaver, M		0	0		0	0	0	0.025	\$ -	0%	0%	0%	0.000
MS Business	PROSO803	ICT - Multimedia Essentials	Weaver, M		0	0		0	0	0	0.025	\$ -	0%	0%	0%	0.000
MS Business	PROSO804	ICT - Program & Logic Essentials	Weaver, M		0	0		0	0	0	0.025	\$ -	0%	0%	0%	0.000
MS Business	PROSO805	ICT - Web Design Essentials	Weaver, M		0	0		0	0	0	0.025	\$ -	0%	0%	0%	0.000
MS Business	PROSO806	ICT - Communications Essentials	Weaver, M		0	0		0	0	0	0.025	\$ -	0%	0%	0%	0.000
MS Business	PROSO807	ICT - Computing Essentials	Weaver, M		0	0		0	0	0	0.025	\$ -	0%	0%	0%	0.000
MS Business	PROSO808	ICT - Cyber Security Essentials	Weaver, M		0	0		0	0	0	0.025	\$ -	0%	0%	0%	0.000
MS Business	PROSO809	ICT - Spreadsheet Essentials	Weaver, M		115	115		94	21	115	0.025	\$ 9,897.44	100%	82%	18%	2.350
MS Business	PROSO810	ICT - Word Processing Essentials	Weaver, M		36	36		28	8	36	0.025	\$ 2,948.17	100%	78%	22%	0.700
			Digital Tools		151	151		122	29	151		\$12,845.62	100%	81%	19%	3.050
MS Business	MICRO017	MS Office Master	Weaver, M	X	0	0		0	0	0	0.100	\$ -	0%	0%	0%	0.000
MS Business	MICRO069	MOS Bundle	Weaver, M	X	53	53		38	15	53	0.100	\$16,004.38	100%	72%	28%	3.800
			Certifications		53	53		38	15	53		\$16,004.38	100%	72%	28%	3.800

2018-2019 Industry Certification Results

Jackson Middle School

Program	Cert #	Assessment	Teacher of Record	School Grade	# Students Identified	# Participants	# In Progress/Didn't Test	# Passing	# Failing	# Completing Participants	Funding Weights	Potential Funding \$	% Participants	% Passing	% Failing	Potential Bonus FTE Calculation
MS Business	PROSO801	ICT - Database Essentials	Hendrix, E		0	0		0	0	0	0.025	\$ -	0%	0%	0%	0.000
MS Business	PROSO802	ICT - Gaming Essentials	Hendrix, E		0	0		0	0	0	0.025	\$ -	0%	0%	0%	0.000
MS Business	PROSO803	ICT - Multimedia Essentials	Hendrix, E		0	0		0	0	0	0.025	\$ -	0%	0%	0%	0.000
MS Business	PROSO804	ICT - Program & Logic Essentials	Hendrix, E		0	0		0	0	0	0.025	\$ -	0%	0%	0%	0.000
MS Business	PROSO805	ICT - Web Design Essentials	Hendrix, E		0	0		0	0	0	0.025	\$ -	0%	0%	0%	0.000
MS Business	PROSO806	ICT - Communications Essentials	Hendrix, E		0	0		0	0	0	0.025	\$ -	0%	0%	0%	0.000
MS Business	PROSO807	ICT - Computing Essentials	Hendrix, E		0	0		0	0	0	0.025	\$ -	0%	0%	0%	0.000
MS Business	PROSO808	ICT - Cyber Security Essentials	Hendrix, E		0	0		0	0	0	0.025	\$ -	0%	0%	0%	0.000
MS Business	PROSO809	ICT - Spreadsheet Essentials	Hendrix, E		132	132		81	51	132	0.025	\$ 8,528.65	100%	61%	39%	2.025
MS Business	PROSO810	ICT - Word Processing Essentials	Hendrix, E		124	124		86	38	124	0.025	\$ 9,055.11	100%	69%	31%	2.150
			Digital Tools		256	256		167	89	256		\$17,583.76	100%	65%	35%	4.175
MS Business	MICRO017	MS Office Master	Hendrix, E	X	0	0		0	0	0	0.100	\$ -	0%	0%	0%	0.000
MS Business	MICRO069	MOS Bundle	Hendrix, E	X	7	7		4	3	7	0.100	\$ 1,684.67	100%	57%	43%	0.400
			Certifications		7	7		4	3	7		\$ 1,684.67	100%	57%	43%	0.400

2018-2019 Industry Certification Results

Jefferson Middle School

Program	Cert #	Assessment	Teacher of Record	School Grade	# Students Identified	# Participants	# In Progress/Didn't Test	# Passing	# Failing	# Completing Participants	Funding Weights	Potential Funding \$	% Participants	% Passing	% Failing	Potential Bonus FTE Calculation
MS Business	PROSO801	ICT - Database Essentials	Smoak, R		0	0		0	0	0	0.025	\$ -	0%	0%	0%	0.000
MS Coding	PROSO802	ICT - Gaming Essentials	Smoak, R		0	0		0	0	0	0.025	\$ -	0%	0%	0%	0.000
MS Business	PROSO803	ICT - Multimedia Essentials	Smoak, R		0	0		0	0	0	0.025	\$ -	0%	0%	0%	0.000
MS Coding	PROSO804	ICT - Program & Logic Essentials	Smoak, R		0	0		0	0	0	0.025	\$ -	0%	0%	0%	0.000
MS Business	PROSO805	ICT - Web Design Essentials	Smoak, R		0	0		0	0	0	0.025	\$ -	0%	0%	0%	0.000
MS Business	PROSO806	ICT - Communications Essentials	Smoak, R		0	0		0	0	0	0.025	\$ -	0%	0%	0%	0.000
MS Business	PROSO807	ICT - Computing Essentials	Smoak, R		0	0		0	0	0	0.025	\$ -	0%	0%	0%	0.000
MS Business	PROSO808	ICT - Cyber Security Essentials	Smoak, R		1	1		1	0	1	0.025	\$ 105.29	100%	100%	0%	0.025
MS Business	PROSO809	ICT - Spreadsheet Essentials	Smoak, R		70	70		21	49	70	0.025	\$ 2,211.13	100%	30%	70%	0.525
MS Business	PROSO810	ICT - Word Processing Essentials	Smoak, R		0	0		0	0	0	0.025	\$ -	0%	0%	0%	0.000
MS Coding	PROSO802	ICT - Gaming Essentials	Strain, T		75	75		42	33	75	0.025	\$ 4,422.26	100%	56%	44%	1.050
MS Coding	PROSO804	ICT - Program & Logic Essentials	Strain, T		69	69		24	45	69	0.025	\$ 2,527.01	100%	35%	65%	0.600
MS Business	PROSO801	ICT - Database Essentials	Buchanan, N		0	0		0	0	0	0.025	\$ -	0%	0%	0%	0.000
MS Business	PROSO802	ICT - Gaming Essentials	Buchanan, N		0	0		0	0	0	0.025	\$ -	0%	0%	0%	0.000
MS Business	PROSO803	ICT - Multimedia Essentials	Buchanan, N		0	0		0	0	0	0.025	\$ -	0%	0%	0%	0.000
MS Business	PROSO804	ICT - Program & Logic Essentials	Buchanan, N		0	0		0	0	0	0.025	\$ -	0%	0%	0%	0.000
MS Business	PROSO805	ICT - Web Design Essentials	Buchanan, N		0	0		0	0	0	0.025	\$ -	0%	0%	0%	0.000
MS Business	PROSO806	ICT - Communications Essentials	Buchanan, N		0	0		0	0	0	0.025	\$ -	0%	0%	0%	0.000
MS Business	PROSO807	ICT - Computing Essentials	Buchanan, N		19	19		7	12	19	0.025	\$ 737.04	100%	37%	63%	0.175
MS Business	PROSO808	ICT - Cyber Security Essentials	Buchanan, N		0	0		0	0	0	0.025	\$ -	0%	0%	0%	0.000
MS Business	PROSO809	ICT - Spreadsheet Essentials	Buchanan, N		54	54		39	15	54	0.025	\$ 4,106.39	100%	72%	28%	0.975
MS Business	PROSO810	ICT - Word Processing Essentials	Buchanan, N		41	41		28	13	41	0.025	\$ 2,948.17	100%	68%	32%	0.700
			Digital Tools		329	329		162	167	329		\$ 17,057.30	100%	49%	51%	4.050
MS Business	MICRO017	MS Office Master	Buchanan, N	X	0	0		0	0	0	0.100	\$ -	0%	0%	0%	0.000
Digital Info Tech	MICRO069	MOS Bundle	Buchanan, N	X	10	10		9	1	10	0.100	\$ 3,790.51	100%	90%	10%	0.900
			Certifications		10	10		9	1	10		\$ 3,790.51	100%	90%	10%	0.900

2018-2019 Industry Certification Results

Johnson Middle School

Program	Cert #	Assessment	Teacher of Record	School Grade	# Students Identified	# Participants	# In Progress/Didn't Test	# Passing	# Failing	# Completing Participants	Funding Weights	Potential Funding \$	% Participants	% Passing	% Failing	Potential Bonus FTE Calculation
MS Business	PROSO801	ICT - Database Essentials	Ashley, S		0	0		0	0	0	0.025	\$ -	0%	0%	0%	0.000
MS Coding	PROSO802	ICT - Gaming Essentials	Ashley, S		55	55		28	27	55	0.025	\$2,948.17	100%	51%	49%	0.700
MS Business	PROSO803	ICT - Multimedia Essentials	Ashley, S		0	0		0	0	0	0.025	\$ -	0%	0%	0%	0.000
MS Coding	PROSO804	ICT - Program & Logic Essentials	Ashley, S		51	51		14	37	51	0.025	\$1,474.09	100%	27%	73%	0.350
MS Business	PROSO805	ICT - Web Design Essentials	Ashley, S		0	0		0	0	0	0.025	\$ -	0%	0%	0%	0.000
MS Business	PROSO806	ICT - Communications Essentials	Ashley, S		0	0		0	0	0	0.025	\$ -	0%	0%	0%	0.000
MS Business	PROSO807	ICT - Computing Essentials	Ashley, S		0	0		0	0	0	0.025	\$ -	0%	0%	0%	0.000
MS Business	PROSO808	ICT - Cyber Security Essentials	Ashley, S		0	0		0	0	0	0.025	\$ -	0%	0%	0%	0.000
MS Business	PROSO809	ICT - Spreadsheet Essentials	Ashley, S		88	88		27	61	88	0.025	\$2,842.88	100%	31%	69%	0.675
MS Business	PROSO810	ICT - Word Processing Essentials	Ashley, S		5	5		1	4	5	0.025	\$ 105.29	100%	20%	80%	0.025
			Digital Tools		199	199		70	129	199		\$7,370.44	100%	35%	65%	1.750
MS Business	MICRO017	MS Office Master	Ashley, S	X	0	0		0	0	0	0.100	\$ -	0%	0%	0%	0.000
Digital Info Tech	MICRO069	MOS Bundle	Ashley, S	X	29	29		4	25	29	0.100	\$1,684.67	100%	14%	86%	0.400
			Certifications		29	29		4	25	29		\$1,684.67	100%	14%	86%	0.400

2018-2019 Industry Certification Results

Kennedy Middle School

Program	Cert #	Assessment	Teacher of Record	School Grade	# Students Identified	# Participants	# In Progress/Didn't Test	# Passing	# Failing	# Completing Participants	Funding Weights	Potential Funding \$	% Participants	% Passing	% Failing	Potential Bonus FTE Calculation
MS Coding	PROSO802	ICT - Gaming Essentials	Bennett, M		14	14		10	4	14	0.025	\$ 1,052.92	100%	71%	29%	0.250
MS Coding	PROSO804	ICT - Program & Logic Essentials	Bennett, M		9	9		7	2	9	0.025	\$ 737.04	100%	78%	22%	0.175
MS Business	PROSO809	ICT - Spreadsheet Essentials	Bennett, M		1	1		1	0	1	0.025	\$ 105.29	100%	100%	0%	0.025
MS Business	PROSO801	ICT - Database Essentials	Reaves, J		0	0		0	0	0	0.025	\$ -	0%	0%	0%	0.000
MS Business	PROSO802	ICT - Gaming Essentials	Reaves, J		0	0		0	0	0	0.025	\$ -	0%	0%	0%	0.000
MS Business	PROSO803	ICT - Multimedia Essentials	Reaves, J		0	0		0	0	0	0.025	\$ -	0%	0%	0%	0.000
MS Business	PROSO804	ICT - Program & Logic Essentials	Reaves, J		0	0		0	0	0	0.025	\$ -	0%	0%	0%	0.000
MS Business	PROSO805	ICT - Web Design Essentials	Reaves, J		0	0		0	0	0	0.025	\$ -	0%	0%	0%	0.000
MS Business	PROSO806	ICT - Communications Essentials	Reaves, J		68	68		67	1	68	0.025	\$ 7,054.56	100%	99%	1%	1.675
MS Business	PROSO807	ICT - Computing Essentials	Reaves, J		0	0		0	0	0	0.025	\$ -	0%	0%	0%	0.000
MS Business	PROSO808	ICT - Cyber Security Essentials	Reaves, J		63	63		58	5	63	0.025	\$ 6,106.93	100%	92%	8%	1.450
MS Business	PROSO809	ICT - Spreadsheet Essentials	Reaves, J		134	134		133	1	134	0.025	\$14,003.83	100%	99%	1%	3.325
MS Business	PROSO810	ICT - Word Processing Essentials	Reaves, J		61	61		51	10	61	0.025	\$ 5,369.89	100%	84%	16%	1.275
			Digital Tools		350	350		327	23	350		\$34,430.47	100%	93%	7%	8.175
MS Business	MICRO017	MS Office Master	Reaves, J	X	0	0		0	0	0	0.100	\$ -	0%	0%	0%	0.000
MS Business	MICRO069	MOS Bundle	Reaves, J	X	55	55		55	0	55	0.100	\$23,164.23	100%	100%	0%	5.500
			Certifications		55	55		55	0	55		\$23,164.23	100%	100%	0%	5.500

2018-2019 Industry Certification Results

Madison Middle School

Program	Cert #	Assessment	Teacher of Record	School Grade	# Students Identified	# Participants	# In Progress/Didn't Test	# Passing	# Failing	# Completing Participants	Funding Weights	Potential Funding \$	% Participants	% Passing	% Failing	Potential Bonus FTE Calculation
MS Business	PROSO801	ICT - Database Essentials	Lee, L		1	1		1	0	1	0.025	\$ 105.29	100%	100%	0%	0.025
MS Business	PROSO802	ICT - Gaming Essentials	Lee, L		11	11		8	3	11	0.025	\$ 842.34	100%	73%	27%	0.200
MS Business	PROSO803	ICT - Multimedia Essentials	Lee, L		19	19		11	8	19	0.025	\$ 1,158.21	100%	58%	42%	0.275
MS Business	PROSO804	ICT - Program & Logic Essentials	Lee, L		0	0		0	0	0	0.025	\$ -	0%	0%	0%	0.000
MS Business	PROSO805	ICT - Web Design Essentials	Lee, L		6	6		3	3	6	0.025	\$ 315.88	100%	50%	50%	0.075
MS Business	PROSO806	ICT - Communications Essentials	Lee, L		1	1		0	1	1	0.025	\$ -	100%	0%	100%	0.000
MS Business	PROSO807	ICT - Computing Essentials	Lee, L		2	2		0	2	2	0.025	\$ -	100%	0%	100%	0.000
MS Business	PROSO808	ICT - Cyber Security Essentials	Lee, L		23	23		18	5	23	0.025	\$ 1,895.26	100%	78%	22%	0.450
MS Business	PROSO809	ICT - Spreadsheet Essentials	Lee, L		113	113		31	82	113	0.025	\$ 3,264.05	100%	27%	73%	0.775
MS Business	PROSO810	ICT - Word Processing Essentials	Lee, L		112	112		34	78	112	0.025	\$ 3,579.93	100%	30%	70%	0.850
			Digital Tools		288	288		106	182	288		\$11,160.95	100%	37%	63%	2.650
MS Business	MICRO017	MS Office Master	Lee, L	X	0	0		0	0	0	0.100	\$ -	0%	0%	0%	0.000
MS Business	MICRO069	MOS Bundle	Lee, L	X	44	44		15	29	44	0.100	\$ 6,317.52	100%	34%	66%	1.500
			Certifications		44	44		15	29	44		\$ 6,317.52	100%	34%	66%	1.500

2018-2019 Industry Certification Results

McNair Middle School

Program	Cert #	Assessment	Teacher of Record	School Grade	# Students Identified	# Participants	# In Progress/Didn't Test	# Passing	# Failing	# Completing Participants	Funding Weights	Potential Funding \$	% Participants	% Passing	% Failing	Potential Bonus FTE Calculation
MS Business	PROSO801	ICT - Database Essentials	DeRossett, M		0	0		0	0	0	0.025	\$ -	0%	0%	0%	0.000
MS Coding	PROSO802	ICT - Gaming Essentials	DeRossett, M		83	83		56	27	83	0.025	\$ 5,896.35	100%	67%	33%	1.400
MS Business	PROSO803	ICT - Multimedia Essentials	DeRossett, M		0	0		0	0	0	0.025	\$ -	0%	0%	0%	0.000
MS Coding	PROSO804	ICT - Program & Logic Essentials	DeRossett, M		68	68		48	20	68	0.025	\$ 5,054.01	100%	71%	29%	1.200
MS Business	PROSO805	ICT - Web Design Essentials	DeRossett, M		0	0		0	0	0	0.025	\$ -	0%	0%	0%	0.000
MS Business	PROSO806	ICT - Communications Essentials	DeRossett, M		0	0		0	0	0	0.025	\$ -	0%	0%	0%	0.000
MS Business	PROSO807	ICT - Computing Essentials	DeRossett, M		0	0		0	0	0	0.025	\$ -	0%	0%	0%	0.000
MS Coding	PROSO808	ICT - Cyber Security Essentials	DeRossett, M		34	34		28	6	34	0.025	\$ 2,948.17	100%	82%	18%	0.700
MS Business	PROSO809	ICT - Spreadsheet Essentials	DeRossett, M		0	0		0	0	0	0.025	\$ -	0%	0%	0%	0.000
MS Business	PROSO810	ICT - Word Processing Essentials	DeRossett, M		0	0		0	0	0	0.025	\$ -	0%	0%	0%	0.000
			Digital Tools		185	185		132	53	185		\$13,898.54	100%	71%	29%	3.300
MS Business	MICRO017	MS Office Master	DeRossett, M	X	0	0		0	0	0	0.100	\$ -	0%	0%	0%	0.000
MS Business	MICRO069	MOS Bundle	DeRossett, M	X	29	29		28	1	29	0.100	\$11,792.70	100%	97%	3%	2.800
			Certifications		29	29		28	1	29		\$11,792.70	100%	97%	3%	2.800

2018-2019 Industry Certification Results

Odyssey Charter Middle School

Program	Cert #	Assessment	Teacher of Record	School Grade	# Students Identified	# Participants	# In Progress/Didn't Test	# Passing	# Failing	# Completing Participants	Funding Weights	Potential Funding \$	% Participants	% Passing	% Failing	Potential Bonus FTE Calculation
	ADESK011	AutoDesk: Inventor	Grimaldi, R	X	3	3		1	2	3	0.100	\$ 421.17	100%	33%	67%	0.100
	ADOB022	Adobe: Photoshop	Warren, K	X	35	35		0	35	35	0.000	\$ -	100%	0%	100%	0.000
			Certifications		38	38		1	37	38		\$ 421.17	100%	3%	97%	0.100

2018-2019 Industry Certification Results

Southwest Middle School

Program	Cert #	Assessment	Teacher of Record	School Grade	# Students Identified	# Participants	# In Progress/Didn't Test	# Passing	# Failing	# Completing Participants	Funding Weights	Potential Funding \$	% Participants	% Passing	% Failing	Potential Bonus FTE Calculation
MS Business	PROSO801	ICT - Database Essentials	Merrell, K		0	0		0	0	0	0.025	\$ -	0%	0%	0%	0.000
MS Business	PROSO802	ICT - Gaming Essentials	Merrell, K		0	0		0	0	0	0.025	\$ -	0%	0%	0%	0.000
MS Business	PROSO803	ICT - Multimedia Essentials	Merrell, K		41	41		29	12	41	0.025	\$ 3,053.47	100%	71%	29%	0.725
MS Business	PROSO804	ICT - Program & Logic Essentials	Merrell, K		0	0		0	0	0	0.025	\$ -	0%	0%	0%	0.000
MS Business	PROSO805	ICT - Web Design Essentials	Merrell, K		0	0		0	0	0	0.025	\$ -	0%	0%	0%	0.000
MS Business	PROSO806	ICT - Communications Essentials	Merrell, K		2	2		2	0	2	0.025	\$ 210.58	100%	100%	0%	0.050
MS Business	PROSO807	ICT - Computing Essentials	Merrell, K		10	10		5	5	10	0.025	\$ 526.46	100%	50%	50%	0.125
MS Business	PROSO808	ICT - Cyber Security Essentials	Merrell, K		0	0		0	0	0	0.025	\$ -	0%	0%	0%	0.000
MS Business	PROSO809	ICT - Spreadsheet Essentials	Merrell, K		195	195		131	64	195	0.025	\$13,793.25	100%	67%	33%	3.275
MS Business	PROSO810	ICT - Word Processing Essentials	Merrell, K		138	138		75	63	138	0.025	\$ 7,896.90	100%	54%	46%	1.875
			Digital Tools		386	386		242	144	386		\$25,480.65	100%	63%	37%	6.050
MS Business	MICRO017	MS Office Master	Merrell, K	X	0	0		0	0	0	0.100	\$ -	0%	0%	0%	0.000
MS Business	MICRO069	MOS Bundle	Merrell, K	X	14	14		4	10	14	0.100	\$ 1,684.67	100%	29%	71%	0.400
			Certifications		14	14		4	10	14		\$ 1,684.67	100%	29%	71%	0.400

2018-2019 Industry Certification Results

Space Coast Middle School

Program	Cert #	Assessment	Teacher of Record	School Grade	# Students Identified	# Participants	# In Progress/Didn't Test	# Passing	# Failing	# Completing Participants	Funding Weights	Potential Funding \$	% Participants	% Passing	% Failing	Potential Bonus FTE Calculation
MS Business	PROSO801	ICT - Database Essentials	Stoppelbein, A		0	0		0	0	0	0.025	\$ -	0%	0%	0%	0.000
MS Business	PROSO802	ICT - Gaming Essentials	Stoppelbein, A		19	19		16	3	19	0.025	\$ 1,684.67	100%	84%	16%	0.400
MS Business	PROSO803	ICT - Multimedia Essentials	Stoppelbein, A		46	46		41	5	46	0.025	\$ 4,316.97	100%	89%	11%	1.025
MS Business	PROSO804	ICT - Program & Logic Essentials	Stoppelbein, A		0	0		0	0	0	0.025	\$ -	0%	0%	0%	0.000
MS Business	PROSO805	ICT - Web Design Essentials	Stoppelbein, A		0	0		0	0	0	0.025	\$ -	0%	0%	0%	0.000
MS Business	PROSO806	ICT - Communications Essentials	Stoppelbein, A		0	0		0	0	0	0.025	\$ -	0%	0%	0%	0.000
MS Business	PROSO807	ICT - Computing Essentials	Stoppelbein, A		0	0		0	0	0	0.025	\$ -	0%	0%	0%	0.000
MS Business	PROSO808	ICT - Cyber Security Essentials	Stoppelbein, A		0	0		0	0	0	0.025	\$ -	0%	0%	0%	0.000
MS Business	PROSO809	ICT - Spreadsheet Essentials	Stoppelbein, A		48	48		44	4	48	0.025	\$ 4,632.85	100%	92%	8%	1.100
MS Business	PROSO810	ICT - Word Processing Essentials	Stoppelbein, A		32	32		27	5	32	0.025	\$ 2,842.88	100%	84%	16%	0.675
			Digital Tools		145	145		128	17	145		\$13,477.37	100%	88%	12%	3.200
MS Business	MICRO017	MS Office Master	Harlan, C	X	0	0		0	0	0	0.100	\$ -	0%	0%	0%	0.000
MS Business	MICRO069	MOS Bundle	Harlan, C	X	9	9		9	0	9	0.100	\$ 3,790.51	100%	100%	0%	0.900
MS Business	MICRO017	MS Office Master	Stoppelbein, A	X	1	1		0	1	1	0.100	\$ -	100%	0%	100%	0.000
MS Business	MICRO069	MOS Bundle	Stoppelbein, A	X	5	5		5	0	5	0.100	\$ 2,105.84	100%	100%	0%	0.500
			Certifications		15	15		14	1	15		\$ 5,896.35	100%	93%	7%	1.400

2018-2019 Industry Certification Results

Stone Middle School

Program	Cert #	Assessment	Teacher of Record	School Grade	# Students Identified	# Participants	# In Progress/Didn't Test	# Passing	# Failing	# Completing Participants	Funding Weights	Potential Funding \$	% Participants	% Passing	% Failing	Potential Bonus FTE Calculation
MS Business	PROSO801	ICT - Database Essentials	Mann, P		0	0		0	0	0	0.025	\$ -	0%	0%	0%	0.000
MS Business	PROSO802	ICT - Gaming Essentials	Mann, P		0	0		0	0	0	0.025	\$ -	0%	0%	0%	0.000
MS Business	PROSO803	ICT - Multimedia Essentials	Mann, P		0	0		0	0	0	0.025	\$ -	0%	0%	0%	0.000
MS Business	PROSO804	ICT - Program & Logic Essentials	Mann, P		0	0		0	0	0	0.025	\$ -	0%	0%	0%	0.000
MS Business	PROSO805	ICT - Web Design Essentials	Mann, P		0	0		0	0	0	0.025	\$ -	0%	0%	0%	0.000
MS Business	PROSO806	ICT - Communications Essentials	Mann, P		0	0		0	0	0	0.025	\$ -	0%	0%	0%	0.000
MS Business	PROSO807	ICT - Computing Essentials	Mann, P		0	0		0	0	0	0.025	\$ -	0%	0%	0%	0.000
MS Business	PROSO808	ICT - Cyber Security Essentials	Mann, P		0	0		0	0	0	0.025	\$ -	0%	0%	0%	0.000
MS Business	PROSO809	ICT - Spreadsheet Essentials	Mann, P		0	0		0	0	0	0.025	\$ -	0%	0%	0%	0.000
MS Business	PROSO810	ICT - Word Processing Essentials	Mann, P		0	0		0	0	0	0.025	\$ -	0%	0%	0%	0.000
			Digital Tools		0	0		0	0	0		\$ -	0%	0%	0%	0.000
MS Business	MICRO017	MS Office Master	Mann, P	X	0	0		0	0	0	0.100	\$ -	0%	0%	0%	0.000
MS Business	MICRO069	MOS Bundle	Mann, P	X	4	4		4	0	4	0.100	\$1,684.67	100%	100%	0%	0.400
			Certifications		4	4		4	0	4		\$1,684.67	100%	100%	0%	0.400

Industry Certification Results by Assessment



This page intentionally left blank.

2018-2019 Industry Certification HS Results by Assessment

Assessment	School	Program	Cert #	Teacher of Record	School Grade	# Students Identified	# Participants	# Passing	# Failing	Funding Weights	Potential CAPE Funding \$	% Passing	% Failing	Potential Bonus FTE Calculation
Autodesk - Certified User AutoCAD	BHS	Technical Design	ADESK002	Fleming	X	49	49	45	4	0.2	\$38,034.00	92%	8%	9.0
	CHS	Technical Design	ADESK002	Auxier	X	20	20	19	1	0.2	\$16,058.80	95%	5%	3.8
	EGHS	Technical Design	ADESK002	Lustic, B	X	97	97	48	49	0.2	\$40,569.60	49%	51%	9.6
	HHS	Technical Design	ADESK002	Pallo	X	5	5	4	1	0.2	\$3,380.80	80%	20%	0.8
	PBMS	Technical Design	ADESK002	Allen, D	X	15	15	11	4	0.2	\$9,297.20	73%	27%	2.2
	PBMS	Applied Robotics	ADESK002	Allen, D	X	1	1	1	0	0.2	\$845.20	100%	0%	0.2
	RHS	Drafting	ADESK002	Schooley, S	X	58	58	51	7	0.2	\$43,105.20	88%	12%	10.2
	SHS	Technical Design	ADESK002	Kimbrell, R	X	29	29	27	2	0.2	\$22,820.40	93%	7%	5.4
Autodesk - Certified User Revit	CHS	Drafting	ADESK002	Gannon, C	X	58	58	58	0	0.2	\$49,021.60	100%	0%	11.6
	EGHS	Technical Design	ADESK008	Lustic, B	X	1	1	0	1	0.2	\$0.00	0%	100%	0.0
	HHS	Technical Design	ADESK008	Pallo	X	1	1	0	1	0.2	\$0.00	0%	100%	0.0
	PBMS	Appl)	ADESK008	Allen, D	X	1	1	0	1	0.2	\$0.00	0%	100%	0.0
	RHS	Drafting	ADESK008	Schooley, S	X	54	54	9	45	0.2	\$7,606.80	17%	83%	1.8
	SHS	Technical Design	ADESK008	Kimbrell, R	X	42	42	17	25	0.2	\$14,368.40	40%	60%	3.4
Autodesk - Certified User Inventor	CHS	Drafting	ADESK008	Gannon, C	X	14	14	9	5	0.2	\$7,606.80	64%	36%	1.8
	BHS	Technical Design	ADESK011	Fleming	X	33	33	29	4	0.2	\$24,510.80	88%	12%	5.8
	EGHS	Technical Design	ADESK011	Lustic, B	X	20	20	9	11	0.2	\$7,606.80	45%	55%	1.8
	HHS	Technical Design	ADESK011	Pallo	X	28	28	22	6	0.2	\$18,594.40	79%	21%	4.4
	MIHS	Engineering Pathways	ADESK011	Parker, C	X	19	19	8	11	0.2	\$6,761.60	42%	58%	1.6
	PBMS	Technical Design	ADESK011	Allen, D	X	16	16	14	2	0.2	\$11,832.80	88%	13%	2.8
	PBMS	Appl)	ADESK011	Allen, D	X	1	1	1	0	0.2	\$845.20	100%	0%	0.2
	PBMS	Applied Robotics	ADESK011	Allen, D	X	10	10	10	0	0.2	\$8,452.00	100%	0%	2.0
	RHS	Drafting	ADESK011	Schooley, S	X	15	15	9	6	0.2	\$7,606.80	60%	40%	1.8
	SHS	Technical Design	ADESK011	Kimbrell, R	X	2	2	1	1	0.2	\$845.20	50%	50%	0.2
Autodesk - Certified Professional AutoCAD	CHS	Drafting	ADESK011	Gannon, C	X	18	18	17	1	0.2	\$14,368.40	94%	6%	3.4
	HHS	Technical Design	ADESK021	Pallo	X	1	1	1	0	0.2	\$845.20	100%	0%	0.2
	RHS	Drafting	ADESK021	Schooley, S	X	3	3	2	1	0.2	\$1,690.40	67%	33%	0.4
	SHS	Technical Design	ADESK021	Kimbrell, R	X	7	7	1	6	0.2	\$845.20	14%	86%	0.2
Autodesk - Certified Professional Inventor	CHS	Drafting	ADESK021	Gannon, C	X	10	10	9	1	0.2	\$7,606.80	90%	10%	1.8
	PBMS	Technical Design	ADESK024	Allen, D	X	5	5	3	2	0.2	\$2,535.60	60%	40%	0.6
Adobe: Dreamweaver	PBMS	Applied Robotics	ADESK024	Allen, D	X	4	4	3	1	0.2	\$2,535.60	75%	25%	0.6
	BHS	Digital Design	ADOBE010	Robertson	X	11	11	11	0	0.2	\$9,297.20	100%	0%	2.2
	CHS	Digital Design	ADOBE010	Nauman	X	1	1	0	1	0.2	\$0.00	0%	100%	0.0
	EGHS	Digital Media/MultiMedia	ADOBE010	Keener, B	X	6	6	3	3	0.2	\$2,535.60	50%	50%	0.6
	HHS	Digital Media/MultiMedia	ADOBE010	Stengle	X	3	3	1	2	0.2	\$845.20	33%	67%	0.2
	MHS	Web Development	ADOBE010	Angove	X	50	50	40	10	0.2	\$33,808.00	80%	20%	8.0
	MIHS	Web Development	ADOBE010	Strazzeri, D	X	7	7	0	7	0.2	\$0.00	0%	100%	0.0
	THS	Web Development	ADOBE010	Ely, K	X	6	6	3	3	0.2	\$2,535.60	50%	50%	0.6
	VHS	Digital Media/MultiMedia	ADOBE010	Cole, M	X	1	1	0	1	0.2	\$0.00	0%	100%	0.0
	Adobe: Animate	BHS	Digital Design	ADOBE011	Robertson	X	13	13	9	4	0.2	\$7,606.80	69%	31%
EGHS		Digital Media/MultiMedia	ADOBE011	Keener, B	X	3	3	3	0	0.2	\$2,535.60	100%	0%	0.6
MHS		Web Development	ADOBE011	Angove	X	43	43	34	9	0.2	\$28,736.80	79%	21%	6.8
MIHS		Web Development	ADOBE011	Strazzeri, D	X	11	11	6	5	0.2	\$5,071.20	55%	45%	1.2
RHS		Digital Media/Multi Media	ADOBE011	Dougherty, K	X	4	4	2	2	0.2	\$1,690.40	50%	50%	0.4
THS		Digital Design	ADOBE011	Benson, A	X	6	6	2	4	0.2	\$1,690.40	33%	67%	0.4
THS		Web Development	ADOBE011	Ely, K	X	8	8	6	2	0.2	\$5,071.20	75%	25%	1.2
THS		Digital Design	ADOBE011	Ely, K	X	1	1	1	0	0.2	\$845.20	100%	0%	0.2
VHS		Digital Media/MultiMedia	ADOBE011	Cole, M	X	2	2	2	0	0.2	\$1,690.40	100%	0%	0.4
Adobe: Premiere Pro	BHS	TV Production Tech	ADOBE018	Potter	X	34	34	25	9	0.1	\$10,565.00	74%	26%	2.5
	BHS	Digital Design	ADOBE018	Robertson	X	11	11	11	0	0.1	\$4,648.60	100%	0%	1.1
	CHS	Digital Design	ADOBE018	Nauman	X	1	1	0	1	0.1	\$0.00	0%	100%	0.0
	EGHS	Digital Media/MultiMedia	ADOBE018	Keener, B	X	8	8	1	7	0.1	\$422.60	13%	88%	0.1
	EHS	TV Production Tech	ADOBE018	Kyzer, M	X	21	21	20	1	0.1	\$8,452.00	95%	5%	2.0
EHS	Digital Design	ADOBE018	Vickers, P	X	0	0	0	0	0.1	\$0.00	0%	0%	0.0	

2018-2019 Industry Certification HS Results by Assessment

Assessment	School	Program	Cert #	Teacher of Record	School Grade	# Students Identified	# Participants	# Passing	# Failing	Funding Weights	Potential CAPE Funding \$	% Passing	% Failing	Potential Bonus FTE Calculation
Adobe: Premiere Pro	HHS	Digital Media/MultiMedia	ADOBE018	Stengle	X	58	58	12	46	0.1	\$5,071.20	21%	79%	1.2
	MHS	Web Development	ADOBE018	Angove	X	17	17	14	3	0.1	\$5,916.40	82%	18%	1.4
	MIHS	Digital Design	ADOBE018	Forbes, K	X	16	16	15	1	0.1	\$6,339.00	94%	6%	1.5
	MIHS	Hospitality & Tourism Mgmt	ADOBE018	Forbes, K	X	1	1	1	0	0.1	\$422.60	100%	0%	0.1
	PBMS	Digital Design	ADOBE018	Regan, P	X	3	3	2	1	0.1	\$845.20	67%	33%	0.2
	RHS	Digital Media/Multi Media	ADOBE018	Dougherty, K	X	43	43	18	25	0.1	\$7,606.80	42%	58%	1.8
	SHS	Digital Media/MultiMedia	ADOBE018	Flinchbaugh	X	1	1	0	1	0.1	\$0.00	0%	100%	0.0
	SCHS	TV Production Tech	ADOBE018	Dietz, R	X	45	45	20	25	0.1	\$8,452.00	44%	56%	2.0
	THS	Digital Design	ADOBE018	Benson, A	X	15	15	14	1	0.1	\$5,916.40	93%	7%	1.4
	THS	TV Production Tech	ADOBE018	Curtis, B	X	55	55	14	41	0.1	\$5,916.40	25%	75%	1.4
	THS	Web Development	ADOBE018	Ely, K	X	6	6	6	0	0.1	\$2,535.60	100%	0%	0.6
	THS	Digital Design	ADOBE018	Ely, K	X	5	5	5	0	0.1	\$2,113.00	100%	0%	0.5
	THS	Digital Design	ADOBE018	Gilreath, K	X	1	1	1	0	0.1	\$422.60	100%	0%	0.1
	VHS	Digital Media/MultiMedia	ADOBE018	Cole, M	X	40	40	31	9	0.1	\$13,100.60	78%	23%	3.1
	VHS	Interior/Fashion Design Svcs	ADOBE018	Humphrys, C	X	2	2	1	1	0.1	\$422.60	50%	50%	0.1
VHS	TV Production Tech	ADOBE018	Sivco, L	X	42	42	25	17	0.1	\$10,565.00	60%	40%	2.5	
Adobe: Illustrator	AHS	Digital Media/MultiMedia	ADOBE020	Deese	X	47	47	15	32	0.1	\$6,339.00	32%	68%	1.5
	BHS	Digital Design	ADOBE020	Robertson	X	52	52	34	18	0.1	\$14,368.40	65%	35%	3.4
	CHS	Digital Design	ADOBE020	Nauman	X	2	2	1	1	0.1	\$422.60	50%	50%	0.1
	EGHS	Digital Media/MultiMedia	ADOBE020	Keener, B	X	43	43	11	32	0.1	\$4,648.60	26%	74%	1.1
	EHS	Digital Design	ADOBE020	Vickers, P	X	47	47	39	8	0.1	\$16,481.40	83%	17%	3.9
	HHS	Digital Media/MultiMedia	ADOBE020	Stengle	X	83	83	12	71	0.1	\$5,071.20	14%	86%	1.2
	MHS	Web Development	ADOBE020	Angove	X	6	6	4	2	0.1	\$1,690.40	67%	33%	0.4
	MHS	Digital Design	ADOBE020	Fannon	X	17	17	15	2	0.1	\$6,339.00	88%	12%	1.5
	MIHS	Digital Design	ADOBE020	Forbes, K	X	9	9	9	0	0.1	\$3,803.40	100%	0%	0.9
	MIHS	Hospitality & Tourism Mgmt	ADOBE020	Forbes, K	X	2	2	2	0	0.1	\$845.20	100%	0%	0.2
Adobe: Illustrator	PBMS	Digital Design	ADOBE020	Regan, P	X	15	15	8	7	0.1	\$3,380.80	53%	47%	0.8
	RHS	Digital Media/Multi Media	ADOBE020	Dougherty, K	X	30	30	21	9	0.1	\$8,874.60	70%	30%	2.1
	SHS	Digital Media/MultiMedia	ADOBE020	Brooks, L	X	3	3	1	2	0.1	\$422.60	33%	67%	0.1
	SHS	Digital Media/MultiMedia	ADOBE020	Flinchbaugh	X	25	25	8	17	0.1	\$3,380.80	32%	68%	0.8
	SHS	Fashion Tech & Design Svcs	ADOBE020	Gray, J	X	13	13	8	5	0.1	\$3,380.80	62%	38%	0.8
	SCHS	Admin Office Specialist	ADOBE020	Stoppelbein	X	1	1	0	1	0.1	\$0.00	0%	100%	0.0
	THS	Digital Design	ADOBE020	Benson, A	X	18	18	16	2	0.1	\$6,761.60	89%	11%	1.6
	THS	Digital Design	ADOBE020	Ely, K	X	7	7	6	1	0.1	\$2,535.60	86%	14%	0.6
	THS	Digital Design	ADOBE020	Gilreath, K	X	2	2	2	0	0.1	\$845.20	100%	0%	0.2
	THS	Fashion Tech & Design Svcs	ADOBE020	Jones, D	X	10	10	2	8	0.1	\$845.20	20%	80%	0.2
	VHS	Digital Media/MultiMedia	ADOBE020	Cole, M	X	3	3	2	1	0.1	\$845.20	67%	33%	0.2
	VHS	Digital Media/MultiMedia	ADOBE020	Hicks, S	X	60	60	37	23	0.1	\$15,636.20	62%	38%	3.7
	VHS	Interior/Fashion Design Svcs	ADOBE020	Humphrys, C	X	21	21	7	14	0.1	\$2,958.20	33%	67%	0.7
	AHS	Digital Media/MultiMedia	ADOBE021	Deese	X	1	1	0	1	0.1	\$0.00	0%	100%	0.0
Adobe: InDesign	BHS	TV Production Tech	ADOBE021	Potter	X	4	4	0	4	0.1	\$0.00	0%	100%	0.0
	BHS	Digital Design	ADOBE021	Robertson	X	35	35	27	8	0.1	\$11,410.20	77%	23%	2.7
	CBHS	Marketing Mgmt & Ent Prin	ADOBE021	Moore	X	8	8	0	8	0.1	\$0.00	0%	100%	0.0
	CHS	Digital Design	ADOBE021	Nauman	X	14	14	3	11	0.1	\$1,267.80	21%	79%	0.3
	EGHS	Digital Media/MultiMedia	ADOBE021	Keener, B	X	24	24	7	17	0.1	\$2,958.20	29%	71%	0.7
	EHS	Digital Design	ADOBE021	Vickers, P	X	55	55	37	18	0.1	\$15,636.20	67%	33%	3.7
	HHS	Digital Media/MultiMedia	ADOBE021	Stengle	X	23	23	4	19	0.1	\$1,690.40	17%	83%	0.4
	MHS	Web Development	ADOBE021	Angove	X	2	2	0	2	0.1	\$0.00	0%	100%	0.0
	MHS	Digital Design	ADOBE021	Fannon	X	37	37	26	11	0.1	\$10,987.60	70%	30%	2.6
	MIHS	Digital Design	ADOBE021	Forbes, K	X	19	19	17	2	0.1	\$7,184.20	89%	11%	1.7
	MIHS	Hospitality & Tourism Mgmt	ADOBE021	Forbes, K	X	7	7	7	0	0.1	\$2,958.20	100%	0%	0.7
	RHS	Digital Media/Multi Media	ADOBE021	Dougherty, K	X	51	51	22	29	0.1	\$9,297.20	43%	57%	2.2
	RHS	Hospitality & Tourism Mgmt	ADOBE021	Kearns, L	X	12	12	9	3	0.1	\$3,803.40	75%	25%	0.9
	RHS	International Business	ADOBE021	Kearns, L	X	38	38	28	10	0.1	\$11,832.80	74%	26%	2.8
	SHS	Marketing Mgmt & Ent Prin	ADOBE021	Brooks, L	X	13	13	6	7	0.1	\$2,535.60	46%	54%	0.6
	SHS	Digital Media/MultiMedia	ADOBE021	Flinchbaugh	X	15	15	11	4	0.1	\$4,648.60	73%	27%	1.1
	SCHS	Digital Media / Multi Media	ADOBE021	Harlan, C	X	4	4	0	4	0.1	\$0.00	0%	100%	0.0
	THS	Digital Design	ADOBE021	Benson, A	X	31	31	28	3	0.1	\$11,832.80	90%	10%	2.8
	THS	Web Development	ADOBE021	Ely, K	X	1	1	0	1	0.1	\$0.00	0%	100%	0.0
	THS	Digital Design	ADOBE021	Ely, K	X	19	19	14	5	0.1	\$5,916.40	74%	26%	1.4
	THS	Digital Design	ADOBE021	Gilreath, K	X	1	1	1	0	0.1	\$422.60	100%	0%	0.1
	VHS	Digital Media/MultiMedia	ADOBE021	Cole, M	X	37	37	33	4	0.1	\$13,945.80	89%	11%	3.3
	VHS	Digital Media/MultiMedia	ADOBE021	Hicks, S	X	9	9	6	3	0.1	\$2,535.60	67%	33%	0.6

2018-2019 Industry Certification HS Results by Assessment

Assessment	School	Program	Cert #	Teacher of Record	School Grade	# Students Identified	# Participants	# Passing	# Failing	Funding Weights	Potential CAPE Funding \$	% Passing	% Failing	Potential Bonus FTE Calculation
Adobe: Photoshop	AHS	Digital Media/MultiMedia	ADOBE022	Deese	X	46	46	28	18	0.1	\$11,832.80	61%	39%	2.8
	BHS	Digital Design	ADOBE022	Robertson	X	18	18	16	2	0.1	\$6,761.60	89%	11%	1.6
	CBHS	International Business	ADOBE022	Turner	X	1	1	1	0	0.1	\$422.60	100%	0%	0.1
	CHS	Digital Design	ADOBE022	Nauman	X	22	22	10	12	0.1	\$4,226.00	45%	55%	1.0
	EGHS	Digital Media/MultiMedia	ADOBE022	Keener, B	X	107	107	33	74	0.1	\$13,945.80	31%	69%	3.3
	EHS	Digital Design	ADOBE022	Vickers, P	X	56	56	48	8	0.1	\$20,284.80	86%	14%	4.8
	HHS	Digital Media/MultiMedia	ADOBE022	Stengle	X	159	159	67	92	0.1	\$28,314.20	42%	58%	6.7
	MHS	Web Development	ADOBE022	Angove	X	29	29	28	1	0.1	\$11,832.80	97%	3%	2.8
	MHS	Digital Design	ADOBE022	Fannon	X	103	103	67	36	0.1	\$28,314.20	65%	35%	6.7
	MIHS	Digital Design	ADOBE022	Forbes, K	X	9	9	9	0	0.1	\$3,803.40	100%	0%	0.9
	MIHS	Hospitality & Tourism Mgmt	ADOBE022	Forbes, K	X	2	2	2	0	0.1	\$845.20	100%	0%	0.2
	PBMS	Digital Design	ADOBE022	Regan, P	X	51	51	13	38	0.1	\$5,493.80	25%	75%	1.3
	RHS	Digital Media/Multi Media	ADOBE022	Dougherty, K	X	87	87	51	36	0.1	\$21,552.60	59%	41%	5.1
	SHS	Digital Media/MultiMedia	ADOBE022	Brooks, L	X	8	8	0	8	0.1	\$0.00	0%	100%	0.0
	SHS	Digital Media/MultiMedia	ADOBE022	Flinchbaugh	X	31	31	13	18	0.1	\$5,493.80	42%	58%	1.3
	SCHS	Digital Media / Multi Media	ADOBE022	Harlan, C	X	46	46	20	26	0.1	\$8,452.00	43%	57%	2.0
	THS	Digital Design	ADOBE022	Benson, A	X	60	60	55	5	0.1	\$23,243.00	92%	8%	5.5
	THS	Web Development	ADOBE022	Ely, K	X	21	21	20	1	0.1	\$8,452.00	95%	5%	2.0
	THS	Digital Design	ADOBE022	Ely, K	X	22	22	14	8	0.1	\$5,916.40	64%	36%	1.4
	THS	Digital Design	ADOBE022	Gilreath, K	X	47	47	26	21	0.1	\$10,987.60	55%	45%	2.6
	THS	Fashion Tech & Design Svcs	ADOBE022	Jones, D	X	2	2	0	2	0.1	\$0.00	0%	100%	0.0
	VHS	Digital Media/MultiMedia	ADOBE022	Cole, M	X	62	62	40	22	0.1	\$16,904.00	65%	35%	4.0
	VHS	Digital Media/MultiMedia	ADOBE022	Hicks, S	X	78	78	53	25	0.1	\$22,397.80	68%	32%	5.3
	VHS	Interior/Fashion Design Svcs	ADOBE022	Humphrys, C	X	8	8	5	3	0.1	\$2,113.00	63%	38%	0.5
WSHS	Digital Photography	ADOBE022	Finch	X	14	14	4	10	0.1	\$1,690.40	29%	71%	0.4	
Odyssey	Digital Art Img	ADOBE022	Warren, K	X	10	10	0	10	0.1	\$0.00	0%	100%	0.0	
Chief Architect	VHS	Interior/Fashion Design Svcs	CARCH002	Humphrys, C	X	10	10	6	4	0.2	\$5,071.20	60%	40%	1.2
Child Development Associate	EGHS	Early Childhood Education	CPREC001	Dilger, E	X	1	1	1	0	0.2	\$845.20	100%	0%	0.2
	MIHS	Early Childhood Education	CPREC001	Pearlman, S	X	3	3	3	0	0.2	\$2,535.60	100%	0%	0.6
	PBMS	Early Childhood Education	CPREC001	Pelchat, K	X	6	6	6	0	0.2	\$5,071.20	100%	0%	1.2
	SHS	Early Childhood Education	CPREC001	Schmid, M	X	7	7	7	0	0.2	\$5,916.40	100%	0%	1.4
ParaPro	VHS	Early Childhood Education	CPREC001	Anderson, P	X	3	3	3	0	0.2	\$2,535.60	100%	0%	0.6
	SCHS	Teacher Assisting	EDTSA001	Drabik, F	X	7	7	7	0	0.0	\$0.00	100%	0%	0.0
C N A	AHS	Nursing Assistant	FDMQA002	Scott	X	13	13	8	5	0.1	\$3,380.80	62%	38%	0.8
	BHS	Nursing Assistant	FDMQA002	Caraballo	X	14	14	11	3	0.1	\$4,648.60	79%	21%	1.1
	MHS	Nursing Assistant	FDMQA002	Krug	X	13	13	12	1	0.1	\$5,071.20	92%	8%	1.2
	PBMS	Nursing Assistant	FDMQA002	Wardell, K	X	10	10	8	2	0.1	\$3,380.80	80%	20%	0.8
	RHS	Nursing Assistant	FDMQA002	Bassile, T	X	15	15	13	2	0.1	\$5,493.80	87%	13%	1.3
	THS	Nursing Assistant	FDMQA002	Hall, C	X	21	21	20	1	0.1	\$8,452.00	95%	5%	2.0
FAA Ground School	EGHS	Aviation Assem & Fabrication	FEDAA013	McInnish, B	X	17	17	17	0	0.2	\$14,368.40	100%	0%	3.4
FLADA	CHS	Auto Collision Tech	FLADA001	Riffe	X	34	34	13	21	0.1	\$5,493.80	38%	62%	1.3
	EGHS	Outboard Marine Svc Tech	FLADA001	Reeder, J	X	25	25	8	17	0.1	\$3,380.80	32%	68%	0.8
Intro to Childcare Training Certificate	EGHS	Early Childhood Education	FLDCF004	Dilger, E	X	10	10	8	2	0	\$0.00	80%	20%	0.0
	MIHS	Early Childhood Education	FLDCF004	Pearlman, S	X	10	10	10	0	0	\$0.00	100%	0%	0.0
	PBMS	Early Childhood Education	FLDCF004	Pelchat, K	X	14	14	7	7	0	\$0.00	50%	50%	0.0
	SHS	Early Childhood Education	FLDCF004	Schmid, M	X	10	10	6	4	0	\$0.00	60%	40%	0.0
Staff Credential	VHS	Early Childhood Education	FLDCF004	Anderson, P	X	15	15	8	7	0	\$0.00	53%	47%	0.0
	EGHS	Early Childhood Education	FLDCF005	Dilger, E	X	9	9	9	0	0	\$0.00	100%	0%	0.0
	MIHS	Early Childhood Education	FLDCF005	Pearlman, S	X	10	10	10	0	0	\$0.00	100%	0%	0.0
	PBMS	Early Childhood Education	FLDCF005	Pelchat, K	X	14	14	14	0	0	\$0.00	100%	0%	0.0
	SHS	Early Childhood Education	FLDCF005	Schmid, M	X	10	10	10	0	0	\$0.00	100%	0%	0.0
	VHS	Early Childhood Education	FLDCF005	Anderson, P	X	15	15	15	0	0	\$0.00	100%	0%	0.0
Water Treat Plant Oper Lvl C	HHS	Envr Water & Recl Tech	FLDEP006	Doran	X	18	18	8	10	0.1	\$3,380.80	44%	56%	0.8
SafeStaff Food Handler Certification	BHS	Culinary Arts	FRALA001	Cox	X	59	59	59	0	0	\$0.00	100%	0%	0.0
	BHS	Culinary Arts	FRALA001	Gray	X	62	62	62	0	0	\$0.00	100%	0%	0.0
	CHS	Culinary Arts	FRALA001	Knight	X	14	14	14	0	0	\$0.00	100%	0%	0.0
	CHS	Culinary Arts	FRALA001	Thomas	X	77	77	77	0	0	\$0.00	100%	0%	0.0
	MHS	Culinary Arts	FRALA001	Cheshire	X	59	59	59	0	0	\$0.00	100%	0%	0.0
	MHS	Culinary Arts	FRALA001	Ferguson	X	87	87	87	0	0	\$0.00	100%	0%	0.0
	PBMS	Culinary Arts	FRALA001	Ho, D	X	100	100	100	0	0	\$0.00	100%	0%	0.0
THS	Culinary Arts	FRALA001	Noble, M	X	112	112	112	0	0	\$0.00	100%	0%	0.0	
Homebuilder's PAC	MHS	Bldg Construction Tech	HBINS002	Dyer	X	1	1	1	0	0.1	\$422.60	100%	0%	0.1
HVAC Excellence - A/C	SCHS	HVAC	HVACE002	Mount, W	X	17	17	17	0	0.2	\$14,368.40	100%	0%	3.4

2018-2019 Industry Certification HS Results by Assessment

Assessment	School	Program	Cert #	Teacher of Record	School Grade	# Students Identified	# Participants	# Passing	# Failing	Funding Weights	Potential CAPE Funding \$	% Passing	% Failing	Potential Bonus FTE Calculation	
HVAC Excellence - Electrical	SCHS	HVAC	HVACE011	Mount, W	X	20	20	20	0	0.2	\$16,904.00	100%	0%	4.0	
Emergency Medical Responder	AHS	Emer Medical Resp (EMR)	IEMSR001	Scott	X	22	22	6	16	0.1	\$2,535.60	27%	73%	0.6	
	MHS	Emer Medical Resp (EMR)	IEMSR001	Krug	X	26	26	12	14	0.1	\$5,071.20	46%	54%	1.2	
Quickbooks	AHS	Accounting Applications	INTUT001	Deese	X	23	23	0	23	0.2	\$0.00	0%	100%	0.0	
	MHS	Finance Academy	INTUT001	Schweich	X	10	10	3	7	0.2	\$2,535.60	30%	70%	0.6	
	MIHS	Hospitality & Tourism Mgmt	INTUT001	Burr, K	X	1	1	0	1	0.2	\$0.00	0%	100%	0.0	
MS Office Master	VHS	Finance Academy	INTUT001	Vacca, J	X	35	35	1	34	0.2	\$845.20	3%	97%	0.2	
	HHS	Admin Office Specialist	MICRO017	Payne	X	4	4	3	1	0.2	\$2,535.60	75%	25%	0.6	
	MIHS	Hospitality & Tourism Mgmt	MICRO017	Burr, K	X	1	1	1	0	0.2	\$845.20	100%	0%	0.2	
	SCHS	Admin Office Specialist	MICRO017	Stoppelbein	X	2	2	1	1	0.2	\$845.20	50%	50%	0.2	
MOS Bundle	THS	Digital Info Tech	MICRO017	Siems, L	X	1	1	1	0	0.2	\$845.20	100%	0%	0.2	
	AHS	Admin Office Specialist	MICRO069	Grooms	X	25	25	9	16	0.2	\$7,606.80	36%	64%	1.8	
	BHS	Digital Design	MICRO069	Robertson	X	14	14	10	4	0.2	\$8,452.00	71%	29%	2.0	
	CBHS	International Business	MICRO069	Turner	X	48	48	29	19	0.2	\$24,510.80	60%	40%	5.8	
	CBHS	International Business	MICRO069	Kimball	X	41	41	30	11	0.2	\$25,356.00	73%	27%	6.0	
	CBHS	Marketing Mgmt & Ent Prin	MICRO069	Moore	X	5	5	4	1	0.2	\$3,380.80	80%	20%	0.8	
	CHS	Digital Info Tech	MICRO069	Nauman	X	23	23	19	4	0.2	\$16,058.80	83%	17%	3.8	
	EGHS	Admin Office Specialist	MICRO069	Barton, C	X	14	14	8	6	0.2	\$6,761.60	57%	43%	1.6	
	HHS	Admin Office Specialist	MICRO069	Pallo	X	36	36	10	26	0.2	\$8,452.00	28%	72%	2.0	
	HHS	Admin Office Specialist	MICRO069	Payne	X	52	52	45	7	0.2	\$38,034.00	87%	13%	9.0	
	MHS	Finance Academy	MICRO069	Schweich	X	5	5	4	1	0.2	\$3,380.80	80%	20%	0.8	
	MHS	Digital Info Tech	MICRO069	Uhing	X	141	141	112	29	0.2	\$94,662.40	79%	21%	22.4	
	MIHS	Admin Office Specialist	MICRO069	Burr, K	X	29	29	24	5	0.2	\$20,284.80	83%	17%	4.8	
	MIHS	Hospitality & Tourism Mgmt	MICRO069	Burr, K	X	15	15	12	3	0.2	\$10,142.40	80%	20%	2.4	
	MIHS	Hospitality & Tourism Mgmt	MICRO069	Forbes, K	X	1	1	1	0	0.2	\$845.20	100%	0%	0.2	
	PBMS	Digital Design	MICRO069	Regan, P	X	1	1	1	0	0.2	\$845.20	100%	0%	0.2	
	RHS	Hospitality & Tourism Mgmt	MICRO069	Kearns, L	X	13	13	8	5	0.2	\$6,761.60	62%	38%	1.6	
	RHS	International Business	MICRO069	Kearns, L	X	3	3	3	0	0.2	\$2,535.60	100%	0%	0.6	
	RHS	Web App Dev & Programming	MICRO069	VanBrunsched	X	5	5	4	1	0.2	\$3,380.80	80%	20%	0.8	
	SHS	Admin Office Specialist	MICRO069	Brooks, L	X	31	31	27	4	0.2	\$22,820.40	87%	13%	5.4	
	SCHS	Digital Media / Multi Media	MICRO069	Harlan, C	X	11	11	11	0	0.2	\$9,297.20	100%	0%	2.2	
	SCHS	Admin Office Specialist	MICRO069	Stoppelbein	X	28	28	27	1	0.2	\$22,820.40	96%	4%	5.4	
	THS	Digital Info Tech	MICRO069	Gilreath, K	X	0	0	0	0	0.2	\$0.00	0%	0%	0.0	
	THS	Digital Info Tech	MICRO069	Siems, L	X	56	56	52	4	0.2	\$43,950.40	93%	7%	10.4	
	VHS	Finance Academy	MICRO069	Ryberg, A	X	30	30	17	13	0.2	\$14,368.40	57%	43%	3.4	
	VHS	Digital Info Tech	MICRO069	Vacca, J	X	25	25	18	7	0.2	\$15,213.60	72%	28%	3.6	
	BVS	Digital Info Tech	MICRO069	Chisholm, C	X	2	2	2	0	0.2	\$1,690.40	100%	0%	0.4	
	MTA - HTML5 Application Developer Fund	PBMS	Web App Dev & Programming	MICRO080	Johnston, B	X	3	3	1	2	0.2	\$845.20	33%	67%	0.2
		RHS	Web App Dev & Programming	MICRO080	VanBrunsched	X	9	9	4	5	0.2	\$3,380.80	44%	56%	0.8
VHS		Web App Dev & Programming	MICRO080	Dohmen	X	53	53	48	5	0.2	\$40,569.60	91%	9%	9.6	
MTA - Intro to Programming Using JavaScript	PBMS	Web App Dev & Programming	MICRO104	Johnston, B	X	3	3	1	2	0.2	\$845.20	33%	67%	0.2	
	RHS	Web App Dev & Programming	MICRO104	VanBrunsched	X	1	1	1	0	0.2	\$845.20	100%	0%	0.2	
MTA - Intro to Programming Using HTML & CSS	PBMS	Web App Dev & Programming	MICRO105	Johnston, B	X	4	4	2	2	0.1	\$845.20	50%	50%	0.2	
	RHS	Web App Dev & Programming	MICRO105	VanBrunsched	X	10	10	8	2	0.1	\$3,380.80	80%	20%	0.8	
	VHS	Web App Dev & Programming	MICRO105	Dohmen	X	53	53	49	4	0.1	\$20,707.40	92%	8%	4.9	
MSSC Certified Prod Tech	BHS	Machining Technology	MSSCN001	McCormick	X	5	5	5	0	0.5	\$10,565.00	100%	0%	2.5	
	HHS	Advanced Manufacturing Tech	MSSCN001	Verdin	X	4	4	4	0	0.5	\$8,452.00	100%	0%	2.0	
CMAA	BHS	Exercise Science	NATHA003	Parr	X	34	34	23	11	0.1	\$9,719.80	68%	32%	2.3	
	CHS	Exercise Science	NATHA003	Mannes	X	12	12	10	2	0.1	\$4,226.00	83%	17%	1.0	
	EGHS	Exercise Science	NATHA003	McMahon, S	X	18	18	17	1	0.1	\$7,184.20	94%	6%	1.7	
	HHS	Exercise Science	NATHA003	Luna	X	63	63	36	27	0.1	\$15,213.60	57%	43%	3.6	
	HHS	Medical Admin Specialist	NATHA003	Trotman	X	29	29	14	15	0.1	\$5,916.40	48%	52%	1.4	
	VHS	Dental Aide	NATHA003	Johnston, F	X	32	32	32	0	0.1	\$13,523.20	100%	0%	3.2	
Aerospace/Aircraft Assembly NCCER	EGHS	Aviation Assem & Fabrication	NCATT003	McInnish, B	X	19	19	9	10	0.2	\$7,606.80	47%	53%	1.8	
	SCHS	HVAC	NCCER018	Mount, W	X	14	14	14	0	0.2	\$11,832.80	100%	0%	2.8	
ASE: Entry-Level Auto - Transmission/Trans Axle	EGHS	Outboard Marine Svc Tech	NIASE077	Reeder, J	X	2	2	1	1	0.1	\$422.60	50%	50%	0.1	
	EGHS	Auto Maint & Lt Repair	NIASE077	Younger, P	X	3	3	3	0	0.1	\$1,267.80	100%	0%	0.3	
	SHS	Auto Maint & Lt Repair	NIASE077	Pitts, R	X	3	3	1	2	0.1	\$422.60	33%	67%	0.1	
ASE: Entry-Level Auto - Auto Svc Tech	EGHS	Outboard Marine Svc Tech	NIASE078	Reeder, J	X	7	7	3	4	0.1	\$1,267.80	43%	57%	0.3	
	EGHS	Auto Maint & Lt Repair	NIASE078	Younger, P	X	4	4	4	0	0.1	\$1,690.40	100%	0%	0.4	
	RHS	Auto Maint & Lt Repair	NIASE078	Sebetka, E	X	1	1	0	1	0.1	\$0.00	0%	100%	0.0	
SHS	Auto Maint & Lt Repair	NIASE078	Pitts, R	X	1	1	1	0	0.1	\$422.60	100%	0%	0.1		

2018-2019 Industry Certification HS Results by Assessment

Assessment	School	Program	Cert #	Teacher of Record	School Grade	# Students Identified	# Participants	# Passing	# Failing	Funding Weights	Potential CAPE Funding \$	% Passing	% Failing	Potential Bonus FTE Calculation
ASE: Entry-Level Auto - Brakes	EGHS	Outboard Marine Svc Tech	NIASE079	Reeder, J	X	6	6	2	4	0.1	\$845.20	33%	67%	0.2
	EGHS	Auto Maint & Lt Repair	NIASE079	Younger, P	X	22	22	14	8	0.1	\$5,916.40	64%	36%	1.4
	HHS	Auto Maint & Lt Repair	NIASE079	Broud, M	X	34	34	29	5	0.1	\$12,255.40	85%	15%	2.9
	MIHS	Auto Maint & Lt Repair	NIASE079	Wilson, C	X	21	21	4	17	0.1	\$1,690.40	19%	81%	0.4
	RHS	Auto Maint & Lt Repair	NIASE079	Sebetka, E	X	43	43	17	26	0.1	\$7,184.20	40%	60%	1.7
	SHS	Auto Maint & Lt Repair	NIASE079	Pitts, R	X	16	16	8	8	0.1	\$3,380.80	50%	50%	0.8
ASE: Entry-Level Auto - Electrical/Electronic Systems	THS	Auto Maint & Lt Repair	NIASE079	Duval, R	X	9	9	4	5	0.1	\$1,690.40	44%	56%	0.4
	EGHS	Outboard Marine Svc Tech	NIASE080	Reeder, J	X	2	2	1	1	0.1	\$422.60	50%	50%	0.1
	EGHS	Auto Maint & Lt Repair	NIASE080	Younger, P	X	9	9	7	2	0.1	\$2,958.20	78%	22%	0.7
	RHS	Auto Maint & Lt Repair	NIASE080	Sebetka, E	X	1	1	1	0	0.1	\$422.60	100%	0%	0.1
ASE: Entry-Level Auto - Engine Performance	SHS	Auto Maint & Lt Repair	NIASE080	Pitts, R	X	3	3	1	2	0.1	\$422.60	33%	67%	0.1
	EGHS	Outboard Marine Svc Tech	NIASE081	Reeder, J	X	8	8	5	3	0.1	\$2,113.00	63%	38%	0.5
	EGHS	Auto Maint & Lt Repair	NIASE081	Younger, P	X	5	5	5	0	0.1	\$2,113.00	100%	0%	0.5
	RHS	Auto Maint & Lt Repair	NIASE081	Sebetka, E	X	2	2	1	1	0.1	\$422.60	50%	50%	0.1
ASE: Entry-Level Auto - Engine Repair	SHS	Auto Maint & Lt Repair	NIASE081	Pitts, R	X	3	3	1	2	0.1	\$422.60	33%	67%	0.1
	EGHS	Outboard Marine Svc Tech	NIASE082	Reeder, J	X	9	9	8	1	0.1	\$3,380.80	89%	11%	0.8
	EGHS	Auto Maint & Lt Repair	NIASE082	Younger, P	X	13	13	11	2	0.1	\$4,648.60	85%	15%	1.1
	MIHS	Auto Maint & Lt Repair	NIASE082	Wilson, C	X	26	26	7	19	0.1	\$2,958.20	27%	73%	0.7
ASE: Entry-Level Auto - Heating & Air Conditioning	RHS	Auto Maint & Lt Repair	NIASE082	Sebetka, E	X	7	7	3	4	0.1	\$1,267.80	43%	57%	0.3
	SHS	Auto Maint & Lt Repair	NIASE082	Pitts, R	X	34	34	9	25	0.1	\$3,803.40	26%	74%	0.9
	EGHS	Outboard Marine Svc Tech	NIASE083	Reeder, J	X	3	3	1	2	0.1	\$422.60	33%	67%	0.1
	EGHS	Auto Maint & Lt Repair	NIASE083	Younger, P	X	12	12	7	5	0.1	\$2,958.20	58%	42%	0.7
ASE: Entry-Level Auto - Manual Drive Train & Axles	HHS	Auto Maint & Lt Repair	NIASE083	Broud, M	X	9	9	7	2	0.1	\$2,958.20	78%	22%	0.7
	RHS	Auto Maint & Lt Repair	NIASE083	Sebetka, E	X	3	3	3	0	0.1	\$1,267.80	100%	0%	0.3
	SHS	Auto Maint & Lt Repair	NIASE083	Pitts, R	X	3	3	1	2	0.1	\$422.60	33%	67%	0.1
	EGHS	Outboard Marine Svc Tech	NIASE084	Reeder, J	X	1	1	0	1	0.1	\$0.00	0%	100%	0.0
ASE: Entry-Level Auto - Suspension & Steering	EGHS	Auto Maint & Lt Repair	NIASE084	Younger, P	X	9	9	4	5	0.1	\$1,690.40	44%	56%	0.4
	RHS	Auto Maint & Lt Repair	NIASE084	Sebetka, E	X	1	1	1	0	0.1	\$422.60	100%	0%	0.1
	SHS	Auto Maint & Lt Repair	NIASE084	Pitts, R	X	1	1	1	0	0.1	\$422.60	100%	0%	0.1
ASE: Entry-Level Auto - Coll-Non-Struct Ana	EGHS	Outboard Marine Svc Tech	NIASE085	Reeder, J	X	6	6	4	2	0.1	\$1,690.40	67%	33%	0.4
	EGHS	Auto Maint & Lt Repair	NIASE085	Younger, P	X	22	22	17	5	0.1	\$7,184.20	77%	23%	1.7
	HHS	Auto Maint & Lt Repair	NIASE085	Broud, M	X	35	35	24	11	0.1	\$10,142.40	69%	31%	2.4
	RHS	Auto Maint & Lt Repair	NIASE085	Sebetka, E	X	18	18	7	11	0.1	\$2,958.20	39%	61%	0.7
	SHS	Auto Maint & Lt Repair	NIASE085	Pitts, R	X	35	35	13	22	0.1	\$5,493.80	37%	63%	1.3
ASE Entry-Lev Coll-Struct Analysis	CHS	Auto Collision Tech	NIASE087	Riffe	X	24	24	9	15	0.1	\$3,803.40	38%	63%	0.9
ASE Entry-Lev Coll-Struct Analysis	CHS	Auto Collision Tech	NIASE089	Riffe	X	8	8	6	2	0.1	\$2,535.60	75%	25%	0.6
NOCTI - Apparel & Text Prod & Mer	CBHS	Fashion Tech & Design Svcs	NOCTI003	Lengyel		3	3	3	0	0	\$0.00	100%	0%	0.0
	PBMS	Fashion Tech & Design Svcs	NOCTI003	Baker, K		12	12	10	2	0		83%	17%	0.0
	RHS	Fashion Tech & Design Svcs	NOCTI003	Pingston, L		13	13	10	3	0	\$0.00	77%	23%	0.0
	SHS	Fashion Tech & Design Svcs	NOCTI003	Gray, J		9	9	8	1	0	\$0.00	89%	11%	0.0
NOCTI - Criminal Justice	PBMS	Criminal Justice Ops	NOCTI010	Shannon, M		19	19	16	3	0	\$0.00	84%	16%	0.0
	RHS	Criminal Justice Ops	NOCTI010	Diesel, S		27	27	24	3	0	\$0.00	89%	11%	0.0
ProStart Certificate of Achievement	BHS	Culinary Arts	NRAEF002	Cox	X	9	9	9	0	0.2	\$7,606.80	100%	0%	1.8
	BHS	Culinary Arts	NRAEF002	Gray	X	25	25	25	0	0.2	\$21,130.00	100%	0%	5.0
	PBMS	Culinary Arts	NRAEF002	Ho, D	X	1	1	1	0	0.2	\$845.20	100%	0%	0.2
ServSafe Manager	AHS	Nutrition & Food Science	NRAEF003	Morgenthal	X	27	27	16	11	0.2	\$13,523.20	59%	41%	3.2
	BHS	Culinary Arts	NRAEF003	Cox	X	39	39	13	26	0.2	\$10,987.60	33%	67%	2.6
	BHS	Culinary Arts	NRAEF003	Gray	X	40	40	36	4	0.2	\$30,427.20	90%	10%	7.2
	CHS	Culinary Arts	NRAEF003	Knight	X	0	0	0	0	0.2	\$0.00	0%	0%	0.0
	CHS	Culinary Arts	NRAEF003	Thomas	X	15	15	5	10	0.2	\$4,226.00	33%	67%	1.0
	HHS	Nutrition & Food Science	NRAEF003	Burch	X	74	74	26	48	0.2	\$21,975.20	35%	65%	5.2
	MHS	Culinary Arts	NRAEF003	Cheshire	X	48	48	37	11	0.2	\$31,272.40	77%	23%	7.4
	MHS	Culinary Arts	NRAEF003	Ferguson	X	54	54	41	13	0.2	\$34,653.20	76%	24%	8.2
	MIHS	Nutrition & Food Science	NRAEF003	Vandenbeldt	X	4	4	4	0	0.2	\$3,380.80	100%	0%	0.8
	PBMS	Culinary Arts	NRAEF003	Ho, D	X	23	23	19	4	0.2	\$16,058.80	83%	17%	3.8
	SHS	Nutrition & Food Science	NRAEF003	Doubek, R	X	8	8	5	3	0.2	\$4,226.00	63%	38%	1.0
	SCHS	Nutrition & Food Science	NRAEF003	Michell, D	X	8	8	3	5	0.2	\$2,535.60	38%	63%	0.6
	THS	Culinary Arts	NRAEF003	Noble, M	X	35	35	12	23	0.2	\$10,142.40	34%	66%	2.4
	VHS	Nutrition & Food Science	NRAEF003	Scholle, L	X	37	37	30	7	0.2	\$25,356.00	81%	19%	6.0
	CIW - JavaScript Specialist	PBMS	Web App Dev & Programming	PROSO017	Johnston, B	X	3	3	0	3	0.2	\$0.00	0%	100%

2018-2019 Industry Certification HS Results by Assessment

Assessment	School	Program	Cert #	Teacher of Record	School Grade	# Students Identified	# Participants	# Passing	# Failing	Funding Weights	Potential CAPE Funding \$	% Passing	% Failing	Potential Bonus FTE Calculation
Solidworks	BHS	Applied Engineering Tech	SOLID003	Mitchell	X	31	31	20	11	0.2	\$16,904.00	65%	35%	4.0
	HHS	Advanced Manufacturing Tech	SOLID003	Verdin	X	5	5	5	0	0.2	\$4,226.00	100%	0%	1.0
	MHS	Applied Engineering Tech	SOLID003	Gabeler	X	36	36	35	1	0.2	\$29,582.00	97%	3%	7.0
	PBMS	Applied Engineering Tech	SOLID003	Allen, R	X	17	17	15	2	0.2	\$12,678.00	88%	12%	3.0
	SCHS	Applied Engineering Tech	SOLID003	Reyes, L	X	12	12	10	2	0.2	\$8,452.00	83%	17%	2.0
Small UAS Safety Certification	BHS	Embry Riddle Dual Enrollment	USINS001	Fenech	X	6	6	0	6	0.2	\$0.00	0%	100%	0.0
CPR/AED/BLS for Healthcare Providers	AHS	Nursing Assistant		Scott		5	5	5	0	0	\$0.00	100%	0%	0.0
	AHS	Emer Medical Resp (EMR)		Scott		4	4	4	0	0	\$0.00	100%	0%	0.0
	BHS	Exercise Science		Caraballo		13	13	13	0	0	\$0.00	100%	0%	0.0
	BHS	Nursing Assistant		Caraballo		9	9	9	0	0	\$0.00	100%	0%	0.0
	BHS	Exercise Science		Parr		37	37	37	0	0	\$0.00	100%	0%	0.0
	CHS	Exercise Science		Mannes		37	37	37	0	0	\$0.00	100%	0%	0.0
	EGHS	Exercise Science		McMahon, S		24	24	24	0	0	\$0.00	100%	0%	0.0
	HHS	Exercise Science		Luna		44	44	44	0	0	\$0.00	100%	0%	0.0
	HHS	Medical Admin Specialist		Trotman		27	27	27	0	0	\$0.00	100%	0%	0.0
	MHS	Nursing Assistant		Krug		54	54	54	0	0	\$0.00	100%	0%	0.0
	PBMS	Early Childhood Education		Pelchat, K		14	14	14	0	0	\$0.00	100%	0%	0.0
	PBMS	Nursing Assistant		Wardell, K		10	10	10	0	0	\$0.00	100%	0%	0.0
	SHS	Early Childhood Education		Schmid, M		10	10	10	0	0	\$0.00	100%	0%	0.0
THS	Nursing Assistant		Hall, C		22	22	22	0	0	\$0.00	100%	0%	0.0	
CPR/First Aid	EGHS	Early Childhood Education		Dilger, E		8	8	8	0	0	\$0.00	100%	0%	0.0
	MHS	Emer Medical Resp (EMR)		Krug		25	25	25	0	0	\$0.00	100%	0%	0.0
	MIHS	Early Childhood Education		Pearlman, S		10	10	10	0	0	\$0.00	100%	0%	0.0
	RHS	Nursing Assistant		Bassile, T		58	58	58	0	0	\$0.00	100%	0%	0.0
	THS	Nursing Assistant		Shimer, T		31	31	31	0	0	\$0.00	100%	0%	0.0
	VHS	Dental Aide		Johnston, F		31	31	31	0	0	\$0.00	100%	0%	0.0

Industry Certification by Program



This page intentionally left blank.

2018-2019 Industry Certification HS Results by Program

Program	School	Cert #	Assessment	Teacher of Record	School Grade	# Students Identified	# Participants	# Passing	# Failing	# Completing Participants	Funding Weights	Potential CAPE Funding \$	% Participants	% Passing	% Failing	Potential Bonus FTE Calculation
Criminal Justice Ops	RHS	NOCTI010	NOCTI - Criminal Justice	Diesel, S		27	27	24	3	27	0	\$ -	100%	89%	11%	0.0
	PBMS	NOCTI010	NOCTI - Criminal Justice	Shannon, M		19	19	16	3	19	0	\$ -	100%	84%	16%	0.0
Culinary Arts	BHS	FRALA001	SafeStaff Food Handler Certification	Cox		59	59	59	0	59	0	\$ -	100%	100%	0%	0.0
	BHS	FRALA001	SafeStaff Food Handler Certification	Gray		62	62	62	0	62	0	\$ -	100%	100%	0%	0.0
	CHS	FRALA001	SafeStaff Food Handler Certification	Knight		14	14	14	0	14	0	\$ -	100%	100%	0%	0.0
	CHS	FRALA001	SafeStaff Food Handler Certification	Thomas		77	77	77	0	77	0	\$ -	100%	100%	0%	0.0
	MHS	FRALA001	SafeStaff Food Handler Certification	Cheshire		59	59	59	0	59	0	\$ -	100%	100%	0%	0.0
	MHS	FRALA001	SafeStaff Food Handler Certification	Ferguson		87	87	87	0	87	0	\$ -	100%	100%	0%	0.0
	PBMS	FRALA001	SafeStaff Food Handler Certification	Ho, D		100	100	100	0	100	0	\$ -	100%	100%	0%	0.0
	THS	FRALA001	SafeStaff Food Handler Certification	Noble, M		112	112	112	0	112	0	\$ -	100%	100%	0%	0.0
	BHS	NRAEF002	ProStart Certificate of Achievement	Cox	X	9	9	9	0	9	0.2	\$ 7,606.80	100%	100%	0%	1.8
	BHS	NRAEF002	ProStart Certificate of Achievement	Gray	X	25	25	25	0	25	0.2	\$ 21,130.00	100%	100%	0%	5.0
	PBMS	NRAEF002	ProStart Certificate of Achievement	Ho, D	X	1	1	1	0	1	0.2	\$ 845.20	100%	100%	0%	0.2
	BHS	NRAEF003	ServSafe Manager	Cox	X	39	39	13	26	39	0.2	\$ 10,987.60	100%	33%	67%	2.6
	BHS	NRAEF003	ServSafe Manager	Gray	X	40	40	36	4	40	0.2	\$ 30,427.20	100%	90%	10%	7.2
	CHS	NRAEF003	ServSafe Manager	Thomas	X	15	15	5	10	15	0.2	\$ 4,226.00	100%	33%	67%	1.0
	MHS	NRAEF003	ServSafe Manager	Cheshire	X	48	48	37	11	48	0.2	\$ 31,272.40	100%	77%	23%	7.4
	MHS	NRAEF003	ServSafe Manager	Ferguson	X	54	54	41	13	54	0.2	\$ 34,653.20	100%	76%	24%	8.2
PBMS	NRAEF003	ServSafe Manager	Ho, D	X	23	23	19	4	23	0.2	\$ 16,058.80	100%	83%	17%	3.8	
THS	NRAEF003	ServSafe Manager	Noble, M	X	35	35	12	23	35	0.2	\$ 10,142.40	100%	34%	66%	2.4	
Digital Art Img	Odyssey	ADOBE022	Adobe: Photoshop	Warren, K	X	10	10	0	10	0.1	\$ -	100%	0%	100%	0.0	
Digital Design	BHS	ADOBE010	Adobe: Dreamweaver	Robertson	X	11	11	11	0	11	0.2	\$ 9,297.20	100%	100%	0%	2.2
	CHS	ADOBE010	Adobe: Dreamweaver	Nauman	X	1	1	0	1	0.2	\$ -	100%	0%	100%	0.0	
	BHS	ADOBE011	Adobe: Animate	Robertson	X	13	13	9	4	13	0.2	\$ 7,606.80	100%	69%	31%	1.8
	THS	ADOBE011	Adobe: Animate	Benson, A	X	6	6	2	4	6	0.2	\$ 1,690.40	100%	33%	67%	0.4
	THS	ADOBE011	Adobe: Animate	Ely, K	X	1	1	1	0	1	0.2	\$ 845.20	100%	100%	0%	0.2
	BHS	ADOBE018	Adobe: Premiere Pro	Robertson	X	11	11	11	0	11	0.1	\$ 4,648.60	100%	100%	0%	1.1
	CHS	ADOBE018	Adobe: Premiere Pro	Nauman	X	1	1	0	1	0.1	\$ -	100%	0%	100%	0.0	
	MIHS	ADOBE018	Adobe: Premiere Pro	Forbes, K	X	16	16	15	1	16	0.1	\$ 6,339.00	100%	94%	6%	1.5
	PBMS	ADOBE018	Adobe: Premiere Pro	Regan, P	X	3	3	2	1	3	0.1	\$ 845.20	100%	67%	33%	0.2
	THS	ADOBE018	Adobe: Premiere Pro	Benson, A	X	15	15	14	1	15	0.1	\$ 5,916.40	100%	93%	7%	1.4
	THS	ADOBE018	Adobe: Premiere Pro	Ely, K	X	5	5	5	0	5	0.1	\$ 2,113.00	100%	100%	0%	0.5
	THS	ADOBE018	Adobe: Premiere Pro	Gilreath, K	X	1	1	1	0	1	0.1	\$ 422.60	100%	100%	0%	0.1
	BHS	ADOBE020	Adobe: Illustrator	Robertson	X	52	52	34	18	52	0.1	\$ 14,368.40	100%	65%	35%	3.4
	CHS	ADOBE020	Adobe: Illustrator	Nauman	X	2	2	1	1	2	0.1	\$ 422.60	100%	50%	50%	0.1
	EHS	ADOBE020	Adobe: Illustrator	Vickers, P	X	47	47	39	8	47	0.1	\$ 16,481.40	100%	83%	17%	3.9
	MHS	ADOBE020	Adobe: Illustrator	Fannon	X	17	17	15	2	17	0.1	\$ 6,339.00	100%	88%	12%	1.5
	MIHS	ADOBE020	Adobe: Illustrator	Forbes, K	X	9	9	9	0	9	0.1	\$ 3,803.40	100%	100%	0%	0.9
	PBMS	ADOBE020	Adobe: Illustrator	Regan, P	X	15	15	8	7	15	0.1	\$ 3,380.80	100%	53%	47%	0.8
	THS	ADOBE020	Adobe: Illustrator	Benson, A	X	18	18	16	2	18	0.1	\$ 6,761.60	100%	89%	11%	1.6
	THS	ADOBE020	Adobe: Illustrator	Ely, K	X	7	7	6	1	7	0.1	\$ 2,535.60	100%	86%	14%	0.6
	THS	ADOBE020	Adobe: Illustrator	Gilreath, K	X	2	2	2	0	2	0.1	\$ 845.20	100%	100%	0%	0.2
	BHS	ADOBE021	Adobe: InDesign	Robertson	X	35	35	27	8	35	0.1	\$ 11,410.20	100%	77%	23%	2.7
	CHS	ADOBE021	Adobe: InDesign	Nauman	X	14	14	3	11	14	0.1	\$ 1,267.80	100%	21%	79%	0.3
	EHS	ADOBE021	Adobe: InDesign	Vickers, P	X	55	55	37	18	55	0.1	\$ 15,636.20	100%	67%	33%	3.7
	MHS	ADOBE021	Adobe: InDesign	Fannon	X	37	37	26	11	37	0.1	\$ 10,987.60	100%	70%	30%	2.6
	MIHS	ADOBE021	Adobe: InDesign	Forbes, K	X	19	19	17	2	19	0.1	\$ 7,184.20	100%	89%	11%	1.7
	THS	ADOBE021	Adobe: InDesign	Benson, A	X	31	31	28	3	31	0.1	\$ 11,832.80	100%	90%	10%	2.8
	THS	ADOBE021	Adobe: InDesign	Ely, K	X	19	19	14	5	19	0.1	\$ 5,916.40	100%	74%	26%	1.4
	THS	ADOBE021	Adobe: InDesign	Gilreath, K	X	1	1	1	0	1	0.1	\$ 422.60	100%	100%	0%	0.1
	BHS	ADOBE022	Adobe: Photoshop	Robertson	X	18	18	16	2	18	0.1	\$ 6,761.60	100%	89%	11%	1.6
	CHS	ADOBE022	Adobe: Photoshop	Nauman	X	22	22	10	12	22	0.1	\$ 4,226.00	100%	45%	55%	1.0
	EHS	ADOBE022	Adobe: Photoshop	Vickers, P	X	56	56	48	8	56	0.1	\$ 20,284.80	100%	86%	14%	4.8
MHS	ADOBE022	Adobe: Photoshop	Fannon	X	103	103	67	36	103	0.1	\$ 28,314.20	100%	65%	35%	6.7	
MIHS	ADOBE022	Adobe: Photoshop	Forbes, K	X	9	9	9	0	9	0.1	\$ 3,803.40	100%	100%	0%	0.9	
PBMS	ADOBE022	Adobe: Photoshop	Regan, P	X	51	51	13	38	51	0.1	\$ 5,493.80	100%	25%	75%	1.3	
THS	ADOBE022	Adobe: Photoshop	Benson, A	X	60	60	55	5	60	0.1	\$ 23,243.00	100%	92%	8%	5.5	
THS	ADOBE022	Adobe: Photoshop	Ely, K	X	22	22	14	8	22	0.1	\$ 5,916.40	100%	64%	36%	1.4	
THS	ADOBE022	Adobe: Photoshop	Gilreath, K	X	47	47	26	21	47	0.1	\$ 10,987.60	100%	55%	45%	2.6	

2018-2019 Industry Certification HS Results by Program

Program	School	Cert #	Assessment	Teacher of Record	School Grade	# Students Identified	# Participants	# Passing	# Failing	# Completing	Funding Weights	Potential CAPE Funding \$	% Participants	% Passing	% Failing	Potential Bonus FTE Calculation
Medical Admin Specialist	HHS	NATHA003	CMAA	Trotman	X	29	29	14	15	29	0.1	\$ 5,916.40	100%	48%	52%	1.4
	HHS		CPR/AED/BLS for Healthcare Providers	Trotman		27	27	27	0	27	0	\$ -	100%	100%	0%	0.0
Nursing Assistant	AHS	FDMQA002	C N A	Scott	X	13	13	8	5	13	0.1	\$ 3,380.80	100%	62%	38%	0.8
	BHS	FDMQA002	C N A	Caraballo	X	14	14	11	3	14	0.1	\$ 4,648.60	100%	79%	21%	1.1
	MHS	FDMQA002	C N A	Krug	X	13	13	12	1	13	0.1	\$ 5,071.20	100%	92%	8%	1.2
	PBMS	FDMQA002	C N A	Wardell, K	X	10	10	8	2	10	0.1	\$ 3,380.80	100%	80%	20%	0.8
	RHS	FDMQA002	C N A	Bassile, T	X	15	15	13	2	15	0.1	\$ 5,493.80	100%	87%	13%	1.3
	THS	FDMQA002	C N A	Hall, C	X	21	21	20	1	21	0.1	\$ 8,452.00	100%	95%	5%	2.0
	AHS		CPR/AED/BLS for Healthcare Providers	Scott		5	5	5	0	5	0	\$ -	100%	100%	0%	0.0
	BHS		CPR/AED/BLS for Healthcare Providers	Caraballo		9	9	9	0	9	0	\$ -	100%	100%	0%	0.0
	MHS		CPR/AED/BLS for Healthcare Providers	Krug		54	54	54	0	54	0	\$ -	100%	100%	0%	0.0
	PBMS		CPR/AED/BLS for Healthcare Providers	Wardell, K		10	10	10	0	10	0	\$ -	100%	100%	0%	0.0
	RHS		CPR/AED/BLS for Healthcare Providers	Bassile, T		58	58	58	0	58	0	\$ -	100%	100%	0%	0.0
	THS		CPR/AED/BLS for Healthcare Providers	Hall, C		22	22	22	0	22	0	\$ -	100%	100%	0%	0.0
THS		CPR/AED/BLS for Healthcare Providers	Shimer, T		31	31	31	0	31	0	\$ -	100%	100%	0%	0.0	
Nutrition & Food Science	AHS	NRAEF003	ServSafe Manager	Morgenthal	X	27	27	16	11	27	0.2	\$ 13,523.20	100%	59%	41%	3.2
	HHS	NRAEF003	ServSafe Manager	Burch	X	74	74	26	48	74	0.2	\$ 21,975.20	100%	35%	65%	5.2
	MIHS	NRAEF003	ServSafe Manager	Vandenbeldt	X	4	4	4	0	4	0.2	\$ 3,380.80	100%	100%	0%	0.8
	SHS	NRAEF003	ServSafe Manager	Doubek, R	X	8	8	5	3	8	0.2	\$ 4,226.00	100%	63%	38%	1.0
	SCHS	NRAEF003	ServSafe Manager	Michell, D	X	8	8	3	5	8	0.2	\$ 2,535.60	100%	38%	63%	0.6
	VHS	NRAEF003	ServSafe Manager	Scholle, L	X	37	37	30	7	37	0.2	\$ 25,356.00	100%	81%	19%	6.0
Outboard Marine Svc Tech	EGHS	FLADA001	FLADA	Reeder, J	X	25	25	8	17	25	0.1	\$ 3,380.80	100%	32%	68%	0.8
	EGHS	NIASE077	ASE: Entry-Level Auto-Trans/Trans Axle	Reeder, J	X	2	2	1	1	2	0.1	\$ 422.60	100%	50%	50%	0.1
	EGHS	NIASE078	ASE: Entry-Level Auto - Auto Svc Tech	Reeder, J	X	7	7	3	4	7	0.1	\$ 1,267.80	100%	43%	57%	0.3
	EGHS	NIASE079	ASE: Entry-Level Auto - Brakes	Reeder, J	X	6	6	2	4	6	0.1	\$ 845.20	100%	33%	67%	0.2
	EGHS	NIASE080	ASE: Entry-Level Auto-Elect/Elect Stms	Reeder, J	X	2	2	1	1	2	0.1	\$ 422.60	100%	50%	50%	0.1
	EGHS	NIASE081	ASE: Entry-Level Auto-Eng Perf	Reeder, J	X	8	8	5	3	8	0.1	\$ 2,113.00	100%	63%	38%	0.5
	EGHS	NIASE082	ASE: Entry-Level Auto-Eng Perf	Reeder, J	X	9	9	8	1	9	0.1	\$ 3,380.80	100%	89%	11%	0.8
	EGHS	NIASE083	ASE: Entry-Level Auto - HVAC	Reeder, J	X	3	3	1	2	3	0.1	\$ 422.60	100%	33%	67%	0.1
	EGHS	NIASE084	ASE: Entry-Level Auto-Man Drive T & A	Reeder, J	X	1	1	0	1	1	0.1	\$ -	100%	0%	100%	0.0
	EGHS	NIASE085	ASE: Entry-Level Auto-Susp & Steering	Reeder, J	X	6	6	4	2	6	0.1	\$ 1,690.40	100%	67%	33%	0.4
Teacher Assisting	SCHS	EDTS001	ParaPro	Drabik, F		7	7	7	0	7	0	\$ -	100%	100%	0%	0.0
Technical Design	BHS	ADESK002	Autodesk - Certified User AutoCAD	Fleming	X	49	49	45	4	49	0.2	\$ 38,034.00	100%	92%	8%	9.0
	CHS	ADESK002	Autodesk - Certified User AutoCAD	Auxier	X	20	20	19	1	20	0.2	\$ 16,058.80	100%	95%	5%	3.8
	EGHS	ADESK002	Autodesk - Certified User AutoCAD	Lustic, B	X	97	97	48	49	97	0.2	\$ 40,569.60	100%	49%	51%	9.6
	HHS	ADESK002	Autodesk - Certified User AutoCAD	Pallo	X	5	5	4	1	5	0.2	\$ 3,380.80	100%	80%	20%	0.8
	PBMS	ADESK002	Autodesk - Certified User AutoCAD	Allen, D	X	15	15	11	4	15	0.2	\$ 9,297.20	100%	73%	27%	2.2
	SHS	ADESK002	Autodesk - Certified User AutoCAD	Kimbrell, R	X	29	29	27	2	29	0.2	\$ 22,820.40	100%	93%	7%	5.4
	EGHS	ADESK008	Autodesk - Certified User Revit	Lustic, B	X	1	1	0	1	1	0.2	\$ -	100%	0%	100%	0.0
	HHS	ADESK008	Autodesk - Certified User Revit	Pallo	X	1	1	0	1	1	0.2	\$ -	100%	0%	100%	0.0
	SHS	ADESK008	Autodesk - Certified User Revit	Kimbrell, R	X	42	42	17	25	42	0.2	\$ 14,368.40	100%	40%	60%	3.4
	BHS	ADESK011	Autodesk - Certified User Inventor	Fleming	X	33	33	29	4	33	0.2	\$ 24,510.80	100%	88%	12%	5.8
	EGHS	ADESK011	Autodesk - Certified User Inventor	Lustic, B	X	20	20	9	11	20	0.2	\$ 7,606.80	100%	45%	55%	1.8
	HHS	ADESK011	Autodesk - Certified User Inventor	Pallo	X	28	28	22	6	28	0.2	\$ 18,594.40	100%	79%	21%	4.4
	PBMS	ADESK011	Autodesk - Certified User Inventor	Allen, D	X	16	16	14	2	16	0.2	\$ 11,832.80	100%	88%	13%	2.8
	SHS	ADESK011	Autodesk - Certified User Inventor	Kimbrell, R	X	2	2	1	1	2	0.2	\$ 845.20	100%	50%	50%	0.2
	HHS	ADESK021	Autodesk - Certified Prof AutoCAD	Pallo	X	1	1	1	0	1	0.2	\$ 845.20	100%	100%	0%	0.2
	SHS	ADESK021	Autodesk - Certified Prof AutoCAD	Kimbrell, R	X	7	7	1	6	7	0.2	\$ 845.20	100%	14%	86%	0.2
PBMS	ADESK024	Autodesk - Certified Prof Inventor	Allen, D	X	5	5	3	2	5	0.2	\$ 2,535.60	100%	60%	40%	0.6	
Technical Design (Adv Tech Appl)	PBMS	ADESK008	Autodesk - Certified User Revit	Allen, D	X	1	1	0	1	1	0.2	\$ -	100%	0%	100%	0.0
	PBMS	ADESK011	Autodesk - Certified User Inventor	Allen, D	X	1	1	1	0	1	0.2	\$ 845.20	100%	100%	0%	0.2
TV Production Tech	BHS	ADOBE018	Adobe: Premiere Pro	Potter	X	34	34	25	9	34	0.1	\$ 10,565.00	100%	74%	26%	2.5
	EHS	ADOBE018	Adobe: Premiere Pro	Kyzer, M	X	21	21	20	1	21	0.1	\$ 8,452.00	100%	95%	5%	2.0
	SCHS	ADOBE018	Adobe: Premiere Pro	Dietz, R	X	45	45	20	25	45	0.1	\$ 8,452.00	100%	44%	56%	2.0
	THS	ADOBE018	Adobe: Premiere Pro	Curtis, B	X	55	55	14	41	55	0.1	\$ 5,916.40	100%	25%	75%	1.4
	VHS	ADOBE018	Adobe: Premiere Pro	Sivco, L	X	42	42	25	17	42	0.1	\$ 10,565.00	100%	60%	40%	2.5
	BHS	ADOBE021	Adobe: InDesign	Potter	X	4	4	0	4	4	0.1	\$ -	100%	0%	100%	0.0

2018-2019 Industry Certification HS Results by Program

Program	School	Cert #	Assessment	Teacher of Record	School Grade	# Students Identified	# Participants	# Passing	# Failing	# Completing Participants	Funding Weights	Potential CAPE Funding \$	% Participants	% Passing	% Failing	Potential Bonus FTE Calculation
Web App Dev & Programming	RHS	MICRO069	MOS Bundie	VanBrunscho	X	5	5	4	1	5	0.2	\$ 3,380.80	100%	80%	20%	0.8
	PBMS	MICRO080	MTA - HTML5 Appl Developer Fund	Johnston, B	X	3	3	1	2	3	0.2	\$ 845.20	100%	33%	67%	0.2
	RHS	MICRO080	MTA - HTML5 Appl Developer Fund	VanBrunscho	X	9	9	4	5	9	0.2	\$ 3,380.80	100%	44%	56%	0.8
	VHS	MICRO080	MTA - HTML5 Appl Developer Fund	Dohmen	X	53	53	48	5	53	0.2	\$ 40,569.60	100%	91%	9%	9.6
	PBMS	MICRO104	MTA - Intro to Prog Using JavaScript	Johnston, B	X	3	3	1	2	3	0.2	\$ 845.20	100%	33%	67%	0.2
	RHS	MICRO104	MTA - Intro to Prog Using JavaScript	VanBrunscho	X	1	1	1	0	1	0.2	\$ 845.20	100%	100%	0%	0.2
	PBMS	MICRO105	MTA - Intro to Prog Using HTML & CSS	Johnston, B	X	4	4	2	2	4	0.1	\$ 845.20	100%	50%	50%	0.2
	RHS	MICRO105	MTA - Intro to Prog Using HTML & CSS	VanBrunscho	X	10	10	8	2	10	0.1	\$ 3,380.80	100%	80%	20%	0.8
	VHS	MICRO105	MTA - Intro to Prog Using HTML & CSS	Dohmen	X	53	53	49	4	53	0.1	\$ 20,707.40	100%	92%	8%	4.9
	PBMS	PROSO017	CIW - JavaScript Specialist	Johnston, B	X	3	3	0	3	3	0.2	\$ -	100%	0%	100%	0.0
Web Development	MHS	ADOBE010	Adobe: Dreamweaver	Angove	X	50	50	40	10	50	0.2	\$ 33,808.00	100%	80%	20%	8.0
	MIHS	ADOBE010	Adobe: Dreamweaver	Strazzeri, D	X	7	7	0	7	7	0.2	\$ -	100%	0%	100%	0.0
	THS	ADOBE010	Adobe: Dreamweaver	Ely, K	X	6	6	3	3	6	0.2	\$ 2,535.60	100%	50%	50%	0.6
	MHS	ADOBE011	Adobe: Animate	Angove	X	43	43	34	9	43	0.2	\$ 28,736.80	100%	79%	21%	6.8
	MIHS	ADOBE011	Adobe: Animate	Strazzeri, D	X	11	11	6	5	11	0.2	\$ 5,071.20	100%	55%	45%	1.2
	THS	ADOBE011	Adobe: Animate	Ely, K	X	8	8	6	2	8	0.2	\$ 5,071.20	100%	75%	25%	1.2
	MHS	ADOBE018	Adobe: Premiere Pro	Angove	X	17	17	14	3	17	0.1	\$ 5,916.40	100%	82%	18%	1.4
	THS	ADOBE018	Adobe: Premiere Pro	Ely, K	X	6	6	6	0	6	0.1	\$ 2,535.60	100%	100%	0%	0.6
	MHS	ADOBE020	Adobe: Illustrator	Angove	X	6	6	4	2	6	0.1	\$ 1,690.40	100%	67%	33%	0.4
	MHS	ADOBE021	Adobe: InDesign	Angove	X	2	2	0	2	2	0.1	\$ -	100%	0%	100%	0.0
	THS	ADOBE021	Adobe: InDesign	Ely, K	X	1	1	0	1	1	0.1	\$ -	100%	0%	100%	0.0
	MHS	ADOBE022	Adobe: Photoshop	Angove	X	29	29	28	1	29	0.1	\$ 11,832.80	100%	97%	3%	2.8
	THS	ADOBE022	Adobe: Photoshop	Ely, K	X	21	21	20	1	21	0.1	\$ 8,452.00	100%	95%	5%	2.0

Industry Certification Appendix



This page intentionally left blank.

2018-2019 Industry Certification HS Return on Investment (ROI)

School	Program	Cost	Funding earned	ROI
AHS	Accounting	\$722.50	\$0.00	-\$722.50
AHS	Admin Office Specialist	\$2,422.50	\$7,581.00	\$5,158.50
AHS	Bldg Construction	\$2,858.00	\$0.00	-\$2,858.00
AHS	CPR	\$36.00	\$0.00	-\$36.00
AHS	Digital Media/MM	\$3,910.00	\$18,110.00	\$14,200.00
AHS	EMR		\$2,535.60	\$2,535.60
AHS	Food Science	\$1,391.75	\$13,477.37	\$12,085.62
AHS	Nursing Assistant	\$2,790.00	\$3,369.34	\$579.34
BHS	CPR	\$236.00	\$0.00	-\$236.00
BHS	Culinary - ServSafe	\$1,042.25	\$18,531.38	\$17,489.13
BHS	Culinary-ProStart	\$1,644.37	\$51,382.46	\$49,738.09
BHS	Digital Design	\$2,847.50	\$62,332.84	\$59,485.34
BHS	Digital Info Tech	\$2,250.00	\$8,423.36	\$6,173.36
BHS	Engineer Tech	\$3,333.33	\$16,846.71	\$13,513.38
BHS	Exercise Science	\$6,904.00	\$9,686.86	\$2,782.86
BHS	Machining Tech	\$11,736.00	\$10,529.20	-\$1,206.80
BHS	Nursing Assistant	\$2,170.00	\$4,632.85	\$2,462.85
BHS	Technical Design	\$3,630.00	\$62,332.00	\$58,702.00
BHS	TV Production	\$2,547.50	\$10,529.00	\$7,981.50
CBHS	Admin Office Specialist	\$8,844.00	\$50,119.00	\$41,275.00
CBHS	Digital Design	\$1,105.00	\$0.00	-\$1,105.00
CBHS	Fashion	\$96.00	\$0.00	-\$96.00
CBHS	Marketing Mgmt & Ent Prin	\$2,599.00	\$3,369.00	\$770.00
CHS	Auto Coll	\$6,204.54	\$11,792.70	\$5,588.16
CHS	CPR	\$148.00	\$0.00	-\$148.00
CHS	Culinary	\$2,800.33	\$4,211.68	\$1,411.35
CHS	Digital Design	\$2,680.00	\$5,896.00	\$3,216.00
CHS	Exercise Science	\$2,278.00	\$4,211.68	\$1,933.68
CHS	Technical Design	\$807.50	\$16,004.00	\$15,196.50
CHS	Digital Info Tech	\$3,910.00	\$16,004.00	\$12,094.00
EGHS	Admin Office Specialist	\$4,505.00	\$6,738.68	\$2,233.68
EGHS	Auto Maint & LR	\$2,170.00	\$30,324.07	\$28,154.07
EGHS	Aviation	\$3,095.00	\$21,900.73	\$18,805.73
EGHS	Digital Design/Digital Media/MM	\$8,632.50	\$26,955.00	\$18,322.50
EGHS	Early Childhood/CDA	\$0.00	\$842.34	\$842.34
EGHS	Marine	\$2,171.44	\$13,898.54	\$11,727.10
EGHS	Technical Design	\$5,142.50	\$48,013.00	\$42,870.50
EGHS	Exercise Science	\$3,600.00	\$7,159.85	\$3,559.85

2018-2019 Industry Certification HS Return on Investment (ROI)

School	Program	Cost	Funding earned	ROI
EHS	Digital Design	\$3,188.00	\$52,224.00	\$49,036.00
EHS	TV Production	\$935.00	\$8,423.00	\$7,488.00
HHS	Admin Office Specialist	\$10,337.00	\$48,855.00	\$38,518.00
HHS	Adv Manufacturing	\$4,727.00	\$12,635.04	\$7,908.04
HHS	Auto Maint & LR	\$1,380.00	\$25,270.07	\$23,890.07
HHS	Digital Media/MM	\$10,800.00	\$40,853.00	\$30,053.00
HHS	Env Water	\$1,900.00	\$3,369.34	\$1,469.34
HHS	Exercise Science	\$14,585.00	\$15,162.04	\$577.04
HHS	Medical Admin Specialist	\$3,697.50	\$5,896.35	\$2,198.85
HHS	Nutrition & Food Science	\$6,719.45	\$21,900.73	\$15,181.28
HHS	Technical Design	\$1,760.00	\$22,743.00	\$20,983.00
MHS	Applied Engineering Tech	\$3,333.00	\$29,481.75	\$26,148.75
MHS	Bldg Construction	\$4,485.00	\$421.17	-\$4,063.83
MHS	Culinary Arts	\$5,707.88	\$31,587.59	\$25,879.71
MHS	Digital Design	\$4,930.00	\$45,486.00	\$40,556.00
MHS	Digital Info Tech	\$7,820.00	\$94,342.00	\$86,522.00
MHS	EMR	\$3,200.00	\$5,054.01	\$1,854.01
MHS	Finance Academy	\$4,052.00	\$5,896.00	\$1,844.00
MHS	Nursing Assistant	\$2,170.00	\$5,054.01	\$2,884.01
MHS	Nutrition & Food Science	\$3,415.00	\$34,535.76	\$31,120.76
MHS	Web Development	\$5,122.50	\$81,706.00	\$76,583.50
MIHS	Admin Office Specialist	\$10,714.00	\$31,166.00	\$20,452.00
MIHS	Auto Maint & LR	\$1,580.00	\$4,632.84	\$3,052.84
MIHS	Digital Design	\$4,114.50	\$21,058.00	\$16,943.50
MIHS	Early Childhood/CDA	\$0.00	\$2,527.01	\$2,527.01
MIHS	Engineering Pathways (PLTW)	\$807.50	\$6,738.68	\$5,931.18
MIHS	Game/Simulation/Animation/Prog	\$2,365.50	\$0.00	-\$2,365.50
MIHS	Nutrition & Food Science	\$1,964.80	\$3,369.34	\$1,404.54
MIHS	Web Development	\$3,265.00	\$5,054.00	\$1,789.00
PBHS	Applied Engineering Tech	\$3,333.33	\$12,635.03	\$9,301.70
PBHS	Applied Robotics	\$1,000.00	\$11,793.00	\$10,793.00
PBHS	Bldg Construction	\$1,634.00	\$0.00	-\$1,634.00
PBHS	Culinary Arts	\$0.00	\$16,846.72	\$16,846.72
PBHS	Digital Design	\$3,887.50	\$10,529.00	\$6,641.50
PBHS	Early Childhood/CDA	\$0.00	\$5,054.01	\$5,054.01
PBHS	Fashion	\$384.00	\$0.00	-\$384.00
PBHS	Nursing Assistant	\$930.00	\$3,369.34	\$2,439.34
PBHS	Technical Design	\$4,972.50	\$24,427.00	\$19,454.50
PBHS	Web App Dev & Programming	\$297.50	\$2,527.00	\$2,229.50
RHS	Auto Maint & LR	\$1,600.00	\$13,898.53	\$12,298.53
RHS	Digital Media/MM	\$7,652.50	\$48,855.00	\$41,202.50
RHS	Drafting	\$2,805.00	\$59,806.00	\$57,001.00
RHS	Hospitality & Tourism Mgmt	\$3,825.00	\$24,849.00	\$21,024.00

2018-2019 Industry Certification HS Return on Investment (ROI)

School	Program	Cost	Funding earned	ROI
RHS	Nursing Assistant	\$2,325.00	\$5,475.18	\$3,150.18
RHS	Web App Dev & Programming	\$3,187.50	\$10,950.00	\$7,762.50
SCHS	A/C Refrigeration & Heating Tech	\$6,011.90	\$42,959.12	\$36,947.22
SCHS	Admin Office Specialist	\$6,715.00	\$23,585.40	\$16,870.40
SCHS	Applied Engineering Tech	\$3,333.00	\$8,423.36	\$5,090.36
SCHS	Digital Media/MM	\$3,037.50	\$8,844.00	\$5,806.50
SCHS	Drafting	\$3,060.00	\$78,337.00	\$75,277.00
SCHS	Nutrition & Food Science	\$733.99	\$2,527.01	\$1,793.02
SCHS	TV Production	\$2,722.50	\$8,423.00	\$5,700.50
SHS	Admin Office Specialist	\$6,715.00	\$22,743.00	\$16,028.00
SHS	Auto Maint & LR	\$1,500.00	\$15,162.05	\$13,662.05
SHS	Digital Media/MM	\$5,180.00	\$13,898.00	\$8,718.00
SHS	Early Childhood/CDA	\$0.00	\$5,896.35	\$5,896.35
SHS	Fashion Tech & Design Svcs	\$400.00	\$3,369.00	\$2,969.00
SHS	Marketing Mgmt & Ent Prin	\$1,507.50	\$2,527.00	\$1,019.50
SHS	Nutrition & Food Science	\$1,960.90	\$4,211.68	\$2,250.78
SHS	Technical Design	\$2,890.00	\$38,747.00	\$35,857.00
THS	Auto Maint & LR	\$759.90	\$1,684.67	\$924.77
THS	Culinary Arts	\$4,143.40	\$10,108.03	\$5,964.63
THS	Digital Design	\$13,721.25	\$49,277.00	\$35,555.75
THS	Digital Info Tech	\$6,287.50	\$44,644.00	\$38,356.50
THS	Fashion Tech & Design Svcs	\$400.00	\$842.00	\$442.00
THS	Nursing Assistant	\$3,590.00	\$8,423.36	\$4,833.36
THS	TV Production	\$1,571.25	\$5,896.00	\$4,324.75
THS	Web Development	\$1,572.50	\$18,531.00	\$16,958.50
VHS	Dental	\$3,795.00	\$13,477.37	\$9,682.37
VHS	Digital Info Tech	\$8,160.00	\$16,004.00	\$7,844.00
VHS	Digital Media/MM	\$12,747.50	\$86,761.00	\$74,013.50
VHS	Early Childhood/CDA	\$0.00	\$2,527.01	\$2,527.01
VHS	Finance Academy	\$4,484.50	\$14,319.00	\$9,834.50
VHS	Interior/Fashion Design Svcs	\$1,342.50	\$10,529.19	\$9,186.69
VHS	Nutrition & Food Science	\$2,418.19	\$25,270.07	\$22,851.88
VHS	TV Production	\$2,990.00	\$10,529.00	\$7,539.00
VHS	Web App Dev & Programming	\$2,167.50	\$61,069.00	\$58,901.50
WSHS	Digital Photography	\$680.00	\$1,685.00	\$1,005.00
	TOTAL High School	\$396,768.26	\$2,145,426.45	\$ 1,748,658.19

2018-2019 Industry Certification MS Return on Investment (ROI)

School	Program	Cost	Funding eamed	ROI
CMS	M S Business	\$6,007.50	\$73,599.08	\$67,591.58
CMS	M S Coding	\$750.00	\$33,482.85	\$32,732.85
CHSMS	M S Business	\$910.00	\$26,744.14	\$25,834.14
CBHSM S	M S Business	\$1,400.00	\$34,746.34	\$33,346.34
DMS	M S Business	\$3,595.00	\$20,637.22	\$17,042.22
HMS	M S Business	\$3,150.00	\$28,849.99	\$25,699.99
JAMS	M S Business	\$2,535.00	\$19,268.43	\$16,733.43
JEM S	M S Business	\$5,350.00	\$10,108.02	\$4,758.02
JEM S	M S Coding	\$2,210.00	\$6,949.27	\$4,739.27
JOMS	M S Business	\$3,182.50	\$2,948.17	-\$234.33
JOMS	M S Coding	\$850.00	\$4,422.26	\$3,572.26
KMS	M S Business	\$3,840.00	\$32,640.50	\$28,800.50
KMS	M S Coding	\$150.00	\$1,789.96	\$1,639.96
MAM S	M S Business	\$3,430.00	\$17,478.48	\$14,048.48
MCMS	M S Business	\$1,530.00	\$11,792.70	\$10,262.70
MCMS	M S Coding	\$910.00	\$13,898.53	\$12,988.53
SCHSM S	M S Business	\$510.00	\$19,373.72	\$18,863.72
STMS	M S Business	\$1,572.50	\$1,684.67	\$112.17
SWMS	M S Business	\$3,577.50	\$27,165.33	\$23,587.83
	TOTAL Middle School	\$45,460.00	\$387,579.66	\$342,119.66

2018-2019 Industry Certification Certiport Exam Return on Investment (ROI)

School	Program	Voucher cost	Bonus earned	ROI
AHS	Admin Office Specialist	\$2,422.50	\$7,581.00	\$5,158.50
AHS	Digital Media/MM	\$3,910.00	\$18,110.00	\$14,200.00
AHS	Accounting	\$722.50	\$0.00	-\$722.50
BHS	Digital Design	\$4,910.00	\$53,909.00	\$48,999.00
BHS	Digital Info Tech	\$680.00	\$8,423.00	\$7,743.00
BHS	Technical Design	\$3,630.00	\$62,332.00	\$58,702.00
BHS	TV Production	\$2,547.50	\$10,529.00	\$7,981.50
CBHS	Admin Office Specialist	\$8,844.00	\$50,119.00	\$41,275.00
CBHS	Marketing Mgmt. & Ent Prin.	\$2,599.00	\$3,369.00	\$770.00
CHS	Digital Design	\$2,680.00	\$5,896.00	\$3,216.00
CHS	Digital Info Tech	\$3,910.00	\$16,004.00	\$12,094.00
CHS	Technical Design	\$807.50	\$16,004.00	\$15,196.50
EGHS	Admin Office Specialist	\$4,820.00	\$6,739.00	\$1,919.00
EGHS	Digital Design/Digital Media/MM	\$8,632.50	\$26,955.00	\$18,322.50
EGHS	Technical Design	\$5,142.50	\$48,013.00	\$42,870.50
EHS	Digital Design	\$3,188.00	\$52,224.00	\$49,036.00
EHS	TV Production	\$935.00	\$8,423.00	\$7,488.00
HHS	Admin Office Specialist	\$10,337.00	\$48,855.00	\$38,518.00
HHS	Technical Design	\$1,760.00	\$22,743.00	\$20,983.00
HHS	Digital Media/MM	\$10,800.00	\$40,853.00	\$30,053.00
MHS	Digital Info Tech	\$7,820.00	\$94,342.00	\$86,522.00
MHS	Digital Design	\$4,930.00	\$45,486.00	\$40,556.00
MHS	Finance Academy	\$4,052.00	\$5,896.00	\$1,844.00
MHS	Web Development	\$5,122.50	\$81,706.00	\$76,583.50
MIHS	Admin Office Specialist	\$10,714.00	\$31,166.00	\$20,452.00
MIHS	Digital Design	\$4,114.50	\$21,058.00	\$16,943.50
MIHS	Engineering Pathways (PLTW)	\$807.50	\$6,739.00	\$5,931.50
MIHS	Web Development	\$3,265.00	\$5,054.00	\$1,789.00
PBHS	Digital Design	\$3,887.50	\$10,529.00	\$6,641.50
PBHS	Applied Robotics	\$1,000.00	\$11,793.00	\$10,793.00
PBHS	Technical Design	\$4,972.50	\$24,427.00	\$19,454.50
PBHS	Web App Dev & Programming	\$297.50	\$2,527.00	\$2,229.50
RHS	Digital Media/MM	\$7,652.50	\$48,855.00	\$41,202.50
RHS	Drafting	\$2,805.00	\$59,806.00	\$57,001.00
RHS	Hospitality & Tourism Mgmt.	\$3,825.00	\$24,849.00	\$21,024.00
RHS	Web App Dev & Programming	\$3,187.50	\$10,950.00	\$7,762.50
SCHS	Admin Office Specialist	\$8,290.00	\$23,585.00	\$15,295.00
SCHS	Digital Media/MM	\$3,037.50	\$8,844.00	\$5,806.50

2018-2019 Industry Certification Certiport Return on Investment (ROI)

School	Program	Voucher cost	Bonus earned	ROI
SCHS	Drafting	\$3,060.00	\$78,337.00	\$75,277.00
SCHS	TV Production	\$2,722.50	\$8,423.00	\$5,700.50
SHS	Admin Office Specialist	\$6,715.00	\$22,743.00	\$16,028.00
SHS	Digital Media/MM	\$5,180.00	\$13,898.00	\$8,718.00
SHS	Fashion Tech & Design Services	\$400.00	\$3,369.00	\$2,969.00
SHS	Technical Design	\$2,890.00	\$38,747.00	\$35,857.00
SHS	Marketing Mgmt. & Ent Prin.	\$1,507.50	\$2,527.00	\$1,019.50
THS	Digital Design	\$13,721.25	\$49,277.00	\$35,555.75
THS	Digital Info Tech	\$6,287.50	\$44,644.00	\$38,356.50
THS	Fashion Tech & Design Services	\$400.00	\$842.00	\$442.00
THS	Web Development	\$1,572.50	\$18,531.00	\$16,958.50
THS	TV Production	\$1,571.25	\$5,896.00	\$4,324.75
VHS	Digital Info Tech	\$8,160.00	\$16,004.00	\$7,844.00
VHS	Digital Media/MM	\$12,747.50	\$86,761.00	\$74,013.50
VHS	Finance Academy	\$4,484.50	\$14,319.00	\$9,834.50
VHS	Fashion Design Services	\$900.00	\$5,475.00	\$4,575.00
VHS	TV Production	\$2,990.00	\$10,529.00	\$7,539.00
VHS	Web App Dev & Programming	\$2,167.50	\$61,069.00	\$58,901.50
WSHS	Digital Photography	\$680.00	\$1,685.00	\$1,005.00
		\$241,215.50	\$1,507,769.00	\$1,266,553.50

CMS	Digital Info Tech	\$3,527.00	\$15,583.00	\$12,056.00
CHS	Digital Info Tech	\$1,900.00	\$7,581.00	\$5,681.00
CBHSMS	Digital Info Tech	\$1,874.00	\$20,637.00	\$18,763.00
DMS	Digital Info Tech	\$1,785.00	\$6,739.00	\$4,954.00
EHS	Digital Info Tech	\$0.00	\$4,633.00	\$4,633.00
HMS	Digital Info Tech	\$2,550.00	\$16,004.00	\$13,454.00
JAMS	Digital Info Tech	\$935.00	\$1,685.00	\$750.00
JEMS	Digital Info Tech	\$4,760.00	\$3,791.00	-\$969.00
JOMS	Digital Info Tech	\$2,252.00	\$1,685.00	-\$567.00
KMS	Digital Info Tech	\$2,550.00	\$23,164.00	\$20,614.00
MAMS	Digital Info Tech	\$2,210.00	\$6,318.00	\$4,108.00
MCMS	Digital Info Tech	\$1,530.00	\$11,792.00	\$10,262.00
SCHSMS	Digital Info Tech	\$0.00	\$1,685.00	\$1,685.00
STMS	Digital Info Tech	\$1,572.00	\$5,896.00	\$4,324.00
SWMS	Digital Info Tech	\$1,487.00	\$1,685.00	\$198.00
		\$28,932.00	\$128,878.00	\$99,946.00
	Total	\$270,147.50	\$1,636,647.00	\$1,366,499.50