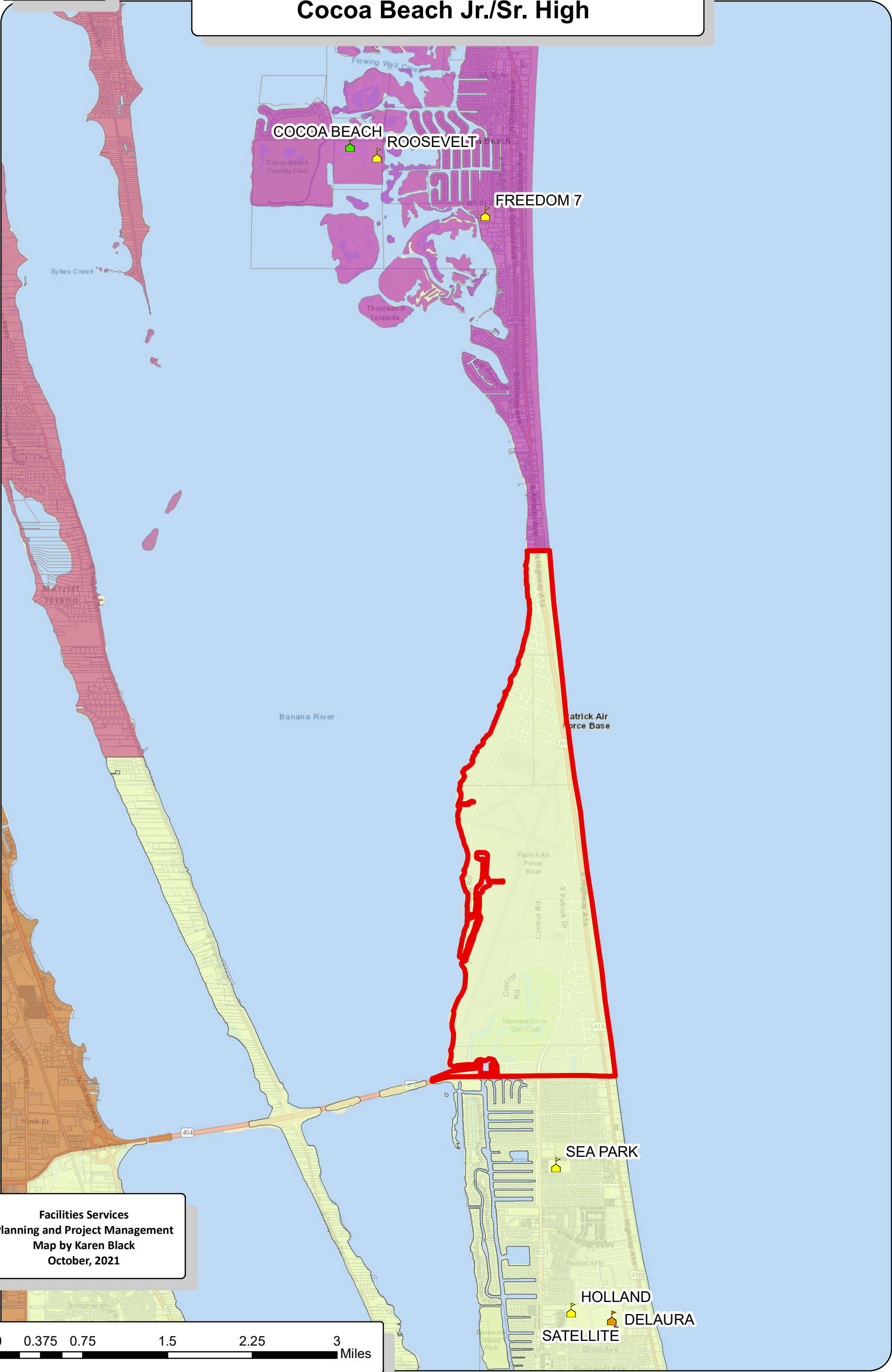
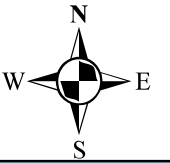
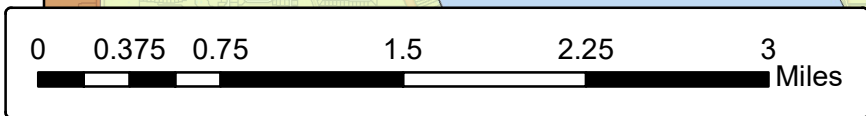




Potential Redistricting Pineda Causeway North DeLaura Middle and Satellite High TO Cocoa Beach Jr./Sr. High



Facilities Services
Planning and Project Management
Map by Karen Black
October, 2021



Potential Redistricting Scenario Pineda Causeway North DeLaura Middle and Satellite High To Cocoa Beach Jr./Sr. High school

EXISTING 2020-2021

10/15/2021

School Name	Total Factored Capacity	Current Students	Current Utilization	Current Students	Current Utilization	Asian	African-American	Hispanic	American Indian	Multi-Ethnic	Pacific Islander	Caucasian	F & R Lunch
DeLaura	960	843	87.8%	843	87.8%	36	21	62	4	49	3	668	199
Satellite	1527	1513	99.1%	1513	99.1%	37	33	92	7	89	5	1250	331
Cocoa Beach	1445	943	65.3%	943	65.3%	40	25	86	4	61	4	723	328

EXISTING 2020-2021

10/15/2021

School Name	Total Factored Capacity	Current Students	Current Utilization	Current Students	Current Utilization	Asian	African-American	Hispanic	American Indian	Multi-Ethnic	Pacific Islander	Caucasian	F & R Lunch
DeLaura	960	843	87.8%	843	87.8%	4.3%	2.5%	7.4%	0.5%	5.8%	0.4%	79.2%	23.6%
Satellite	1527	1513	99.1%	1513	99.1%	2.4%	2.2%	6.1%	0.5%	5.9%	0.3%	82.6%	21.9%
Cocoa Beach	1445	943	65.3%	943	65.3%	4.2%	2.7%	9.1%	0.4%	6.5%	0.4%	76.7%	34.8%

PROPOSED REDISTRICTING CHANGES

School Name	Total Factored Capacity	Current Students	Current Utilization	New Students	New Utilization	Asian	African-American	Hispanic	American Indian	Multi-Ethnic	Pacific Islander	Caucasian	F & R Lunch
DeLaura	960	843	87.8%	-25	85.2%	-2	-2	-4	-1	-2	-1	-13	-7
Satellite	1527	1513	99.1%	-49	95.9%	-1	-3	-8	-1	-4		-32	-11
Cocoa Beach	1445	943	65.3%	74	70.4%	3	5	12	2	6	1	45	18

PROPOSED REDISTRICTING CHANGES

%

School Name	Total Factored Capacity	Current Students	Current Utilization	New Student Total	New Utilization	Asian	African-American	Hispanic	American Indian	Multi-Ethnic	Pacific Islander	Caucasian	F & R Lunch
DeLaura	960	843	87.8%	818	85.2%	4.2%	2.3%	7.1%	0.4%	5.7%	0.2%	80.1%	23.5%
Satellite	1527	1513	99.1%	1464	95.9%	2.5%	2.0%	5.7%	0.4%	5.8%	0.3%	83.2%	21.9%
Cocoa Beach	1445	943	65.3%	1017	70.4%	4.2%	2.9%	9.6%	0.6%	6.6%	0.5%	75.5%	34.0%
BPS Totals						2.7%	14.7%	11.8%	0.3%	9.0%	0.2%	61.3%	52.7%
BPS + Charters Totals						2.6%	15.0%	12.0%	0.3%	8.9%	0.2%	61.0%	50.0%

DIFFERENCES FROM PROPOSED CHANGES

School Name	Total Factored Capacity	Current Students	Current Utilization	New Student Total	New Utilization	Asian	African-American	Hispanic	American Indian	Multi-Ethnic	Pacific Islander	Caucasian	F & R Lunch
DeLaura	960	843	87.8%	818	85.2%	-0.1%	-0.2%	-0.3%	-0.1%	-0.1%	-0.1%	0.8%	-0.1%
Satellite	1527	1513	99.1%	1464	95.9%	0.0%	-0.1%	-0.3%	-0.1%	-0.1%	0.0%	0.6%	0.0%
Cocoa Beach	1445	943	65.3%	1017	70.4%	0.0%	0.3%	0.5%	0.2%	0.1%	0.1%	-1.2%	-0.8%
BPS Totals						2.7%	14.7%	11.8%	0.3%	9.0%	0.2%	61.3%	52.7%
BPS + Charters Totals						2.6%	15.0%	12.0%	0.3%	8.9%	0.2%	61.0%	50.0%

SchType	(All)
FAC	(All)

SchType	(All)
FAC	(All)
PKKGAH	

Count of StuNo	Column Labels	Grand Total
Opportunity Scholarship (McKay)	3	3
Private School	1	1
Brevard Virtual	4	4
Eau Gallie	2	2
West Shore	1	1
Satellite	49	49
DeLaura	25	25
Rockledge	1	1
Viera	1	1
Hoover	2	2
Grand Total	89	89

Count of StuNo	Column Labels	7	8	9	10	11	12	Grand Total
Opportunity Scholarship (McKay)			1			1	1	3
Private School							1	1
Brevard Virtual			1	1		1	1	4
Eau Gallie			1				1	2
West Shore			1					1
Satellite				12	10	12	15	49
DeLaura		14	11					25
Rockledge					1			1
Viera						1		1
Hoover		2						2
Grand Total		16	15	13	11	15	19	89