

Capital Outlay Committee Meeting

Brevard Public Schools, ESF
School Board Room

January 10, 2022 at 1:30 p.m.





Pledge of Allegiance



Hello!



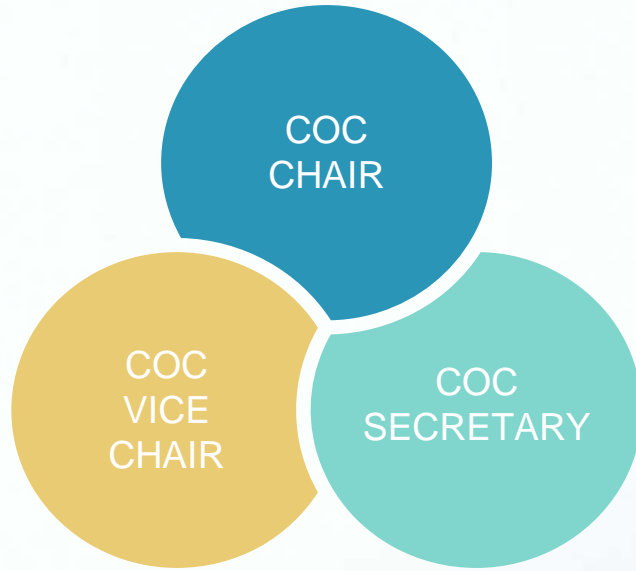
Introductions



Approval of Agenda



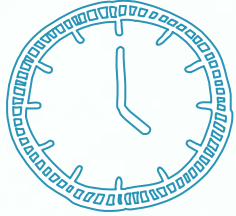
Approval of Minutes



Current Officers:

- ❖ Mr. Mark Ryan, Chair
- ❖ Ms. Peggy Busacca, Vice Chair
- ❖ Mr. David Lindemann, Secretary

Annual Election of Officers



Happy New Year!



Standing Agenda Items

- + Capital Outlay Committee Appointment Updates
- + School Board Local Planning Agency Representatives



Capital Projects Update

David Lindemann, Director
Planning & Project Management



BPS Capital Project Schedule

Current:

- + Viera High School Addition
- + Mims Cafetorium

Planning this year:

- + South Lake Classroom Addition
- + New Middle School X
- + Central Area Transportation Facility

Within 5-Year Plan:

- + New South Area Elementary School
- + South area Elementary Capacity

2021-2022 District 5-Year Work Plan

- ✓ Capital Projects
- ✓ Submitted to COC for review
November 30, 2021
- ✓ School Board Approval
December 14, 2021
- ✓ Submitted to FLDOE
December 15, 2021

Attendance Boundary Change Process



Attendance Boundary Changes

1) Meadowlanes to Discovery Elementary School – SY2022-23

**New Two-Year Process:*

2) Apollo Elementary to Imperial Estates Elementary School -SY
2023-24

3) Heritage High to Bayside High School -SY 2023-24

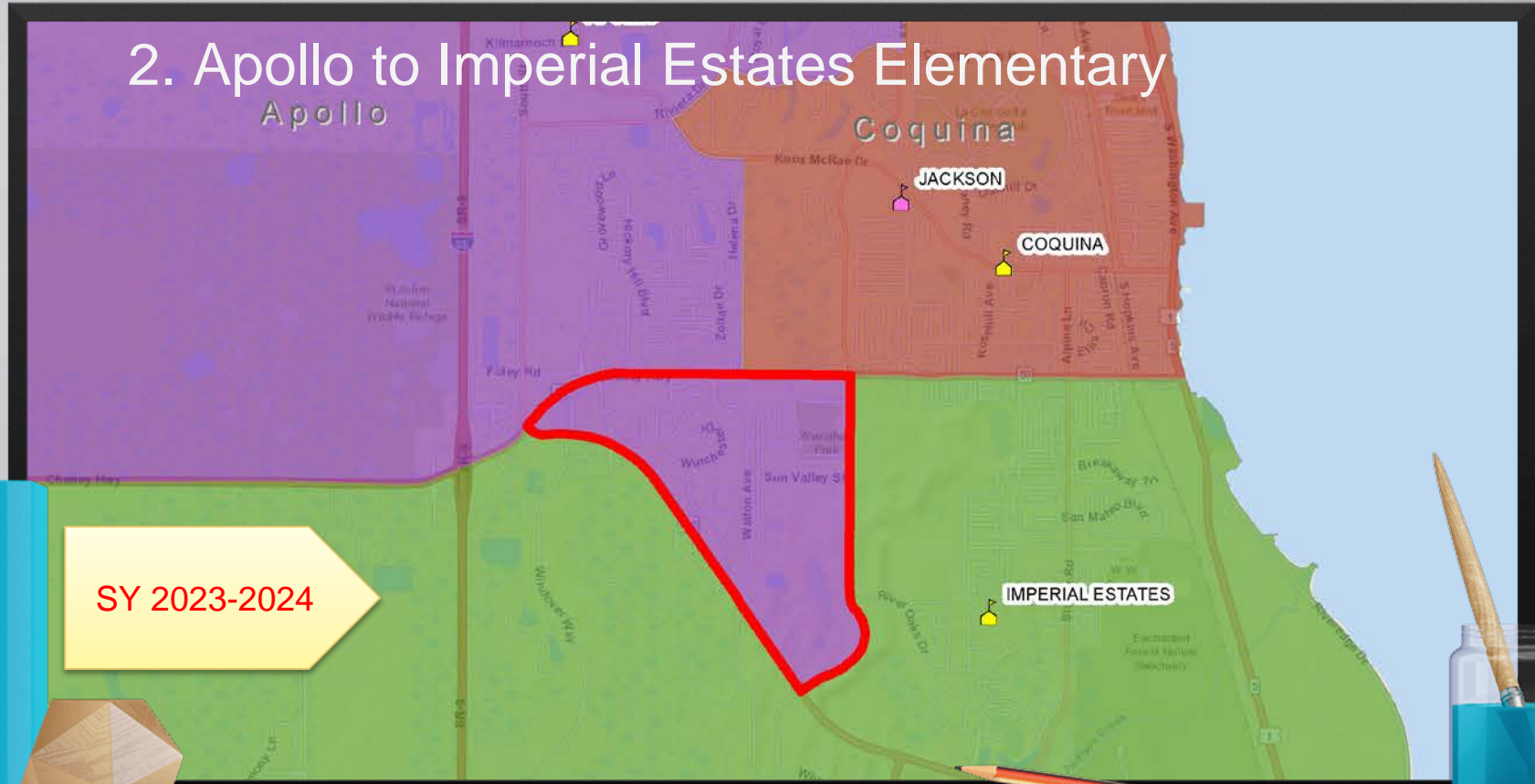
4) DeLaura Middle and Satellite High School to Cocoa Beach
Jr./Sr. High School- SY 2023-24

Meadowlanes to Discovery Elementary School

School	Current Students	Current Utilization	Proposed Students	Proposed Utilization
Meadowlane Intermediate	832	74.7%	831	74.6%
Meadowlane Primary	678	82.3%	676	82.0%
Discovery	615	62.8%	618	63.1%

Based on SY2021-22, Survey II student information downloaded data, dated 10-15-2021

2. Apollo to Imperial Estates Elementary



SY 2023-2024



Apollo to Imperial Estates Elementary School

School	Current Students	Current Utilization	Proposed Students	Proposed Utilization
Apollo	782	86.7%	730	80.9%
Imperial Estates	624	85.6%	676	92.7%

Based on SY2021-22, Survey II student information downloaded data, dated 10-15-2021

3. Heritage to Bayside High School

Heritage

Palm Bay

HERITAGE

MCAULIFFE

JUPITER

SOUTHWEST

TURNER

SY 2023-2024



Heritage High to Bayside High School

School	Current Students	Current Utilization	Proposed Students	Proposed Utilization
Heritage	1991	86.0%	1794	77.5%
Bayside	1653	73.0%	1850	81.7%

Based on SY2021-22, Survey II student information downloaded data, dated 10-15-2021

4. DeLaura Middle/Satellite High to Cocoa Beach Jr./Sr. High School

Banana River

Patrick Air Force Base

SY 2023-2024

School	Current Students	Current Utilization	Proposed Students	Proposed Utilization
DeLaura Middle	843	87.8%	818	85.2%
Satellite High	1513	99.1%	1464	95.9%
Cocoa Beach	943	65.3%	1017	70.4%

Based on SY2021-22, Survey II student information downloaded data, dated 10-15-2021

Two-Year Phase in process...

SY2022-2023

- ❖ Areas remain zoned for their current schools
- ❖ ELO early without Fee
- ❖ Buses run as normal to current zoned schools

SY2023-2024

- ❖ Implement zoning changes
- ❖ ELO to stay, (\$30 Fee, no transportation)
- ❖ Buses run to newly zoned schools only.

Board Approved Special Considerations

- + Waive ELO fees for affected families for SY2022-2023.
- + Existing EPO students may continue their existing programs, regardless of grade.
- + Special Considerations for rising 6th grade students affected by the Apollo to Imperial Estates boundary change and rising 11th or 12th grade students affected by the Heritage to Bayside boundary change for SY 2023-24 (\$30 fee and no transportation).
- + Military families:
 - + Secondary students may continue to attend DeLaura/Satellite under ELO process (\$30 fee and no transportation)
 - + Approved a conceptual provision of bus service from a stop at the north end of PSFB to Cocoa Beach Jr./Sr. High for SY2022-2023

2021 School Concurrency Update

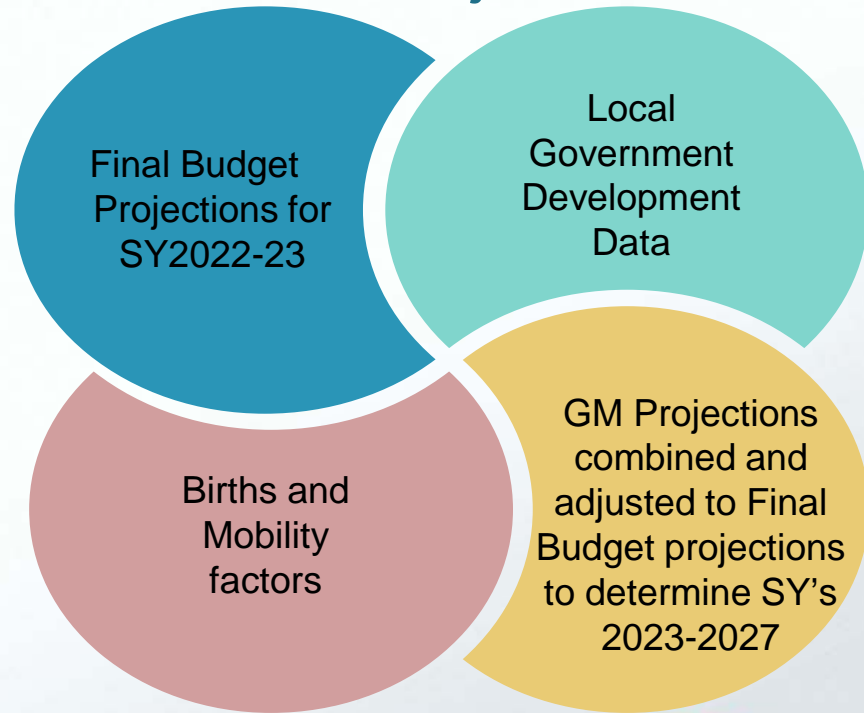
School Capacity Determination Reservations (SCADL)

	Brevard	Cape Canaveral	Cocoa Beach	Cocoa	IHB	Melbourne	Palm Bay	Rockledge	Satellite	Titusville	West Mel	Totals
SFR	429			56		33	2284	364		99	146	3411
MFR						240	46			384	376	1046
CON									10			10
MOB	174											174
Totals	603	0	0	56	0	273	2330	364	10	483	522	4641

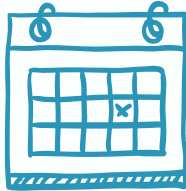
Concurrency Determinations: Preliminary

	Brevard	Cape Canaveral	Cocoa Beach	Cocoa	IHB	Melbourne	Palm Bay	Rockledge	Satellite	Titusville	West Mel	Totals
SFR	946						2269	411			201	3827
MFR	266						1234	740			1463	3703
CON												
MOB												
Totals	1212	0	0	0	0	0	3503	1151	0	0	1664	7530

Student Enrollment Projections



Financially Feasible Plan



A total of 15 relocatable classrooms were assumed to add future student stations to maintain utilization rates lower than 100% over the next five years at the following schools:

- Roy Allen Elementary
- Jupiter Elementary
- Sunrise Elementary
- Westside Elementary
- Satellite High
- Viera High

Student Accommodation Plan Schedule

Activity	By	Start	Finish
Request for Input	Facilities Services	01-07-2022	
Provide Input	Principals / Area Superintendents	01-10-22	01-21-22
Generate Initial Draft Plan	Facilities Services	01-24-22	02-11-22
Review Initial Draft Plan and Provide Comments	Assistant Superintendents	01-31-22	02-04-22
Incorporate Comments and Generate Final Plan	Facilities Services	02-07-22	02-14-22
Approve Final Plan	Assistant Superintendents	02-14-22	E-Agenda Due to Sue 02-25-22
Board Agenda Item Due	Facilities Services	03-02-2022	
Approve Consent Agenda Item	School Board	03-22-2022	

Student Generation Multiplier



- ❖ Report to COC by March 18th for review
- ❖ Zoom Meeting prior to April COC Meeting?

2022 COC Meeting Schedule



School Board Room Reserved

- Monday, April 11, 2022; 1:30 pm
- Monday, July 11, 2022; 1:30 pm
- Monday, October 17, 2022; 1:30 pm



Thanks!

Any questions?

You can find me at:

- + 633-1000, ext. 11418
- + Black.Karen@BrevardSchools.org

