

Q. What instruments are taught in Band?

- A. Wind and percussion instruments are taught in Band. This includes: Flute, Oboe, Bassoon, Clarinet, Saxophone, Trumpet, French Horn, Trombone, Baritone, Tuba and Orchestral Percussion (snare drum and keyboard percussion).

Q. What if I already take private lessons on a band instrument or I was in an elementary school band?

- A. Contact the Band Director to let her know. Placement in a higher level band class may be possible.

Q. Can I start on my instrument during summer?

- A. YES! We offer a summer band camp! Please check our website at <https://statesmenband.wordpress.com/summer-band-camp/>

Q. What about piano and bass?

- A. Piano and Bass are used in the Jazz Band but they are not taught in the regular Band class. Students playing these instruments take private lessons and play another wind instrument in the Band. Jazz Band is a second band class they take in addition to their regular Band class.



Interesting Facts About Band

*Studies show that students enrolled in music classes for 3 years or more score higher on standardized tests than students who do not take music.

*BAND provides a safe, disciplined and positive social environment during the middle school years.

*Many BAND students are regularly on the honor roll.

Music Makes a Difference!

If you have any questions or concerns, please contact Ms. Kinion at Jefferson Middle School:

Email:

Kinion.Kathleen@Brevardschools.org

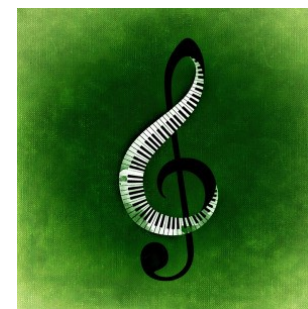
Band Office: 321-453-5154 Ext. 5501

Band Website:

[StatesmenBand.Wordpress.com](https://www.facebook.com/StatesmenBand)

Facebook: <https://www.facebook.com/StatesmenBand>

Jefferson Middle School Band Program



“Statesmen Band”

Beginning
Band
Information
Guide



Frequently Asked Questions and Answers about Band:

Q. Do I need any previous music training to be in Band?

- A. No! We teach all of the skills needed to read music and play an instrument. Almost all of the students in band never played an instrument before they started in a beginning class.

Q. How do I know what instrument I will play?

- A. The Band Director will help each student in the selection process. Each child will be asked to try different instruments. The goal is to get the student on an instrument where he or she will be the most successful. We are usually able to get the student's 1st or 2nd choice. The final decision is based on student performance, physical differences, and number of each instrument to get a good full band sound.

Q. Will BAND interfere with my other classes or other activities at school?

- A. No! Students meet as a class everyday just like Math, Science, English, P.E. and other classes.

Q. How do I get an instrument once I know what I will play and what does it cost?

- A. Most music stores offer a variety of rental plans that can fit almost any budget! Used instruments are acceptable but must be in good playing condition. The Director should be contacted before you buy a used instrument to assure you are getting a good deal. The school owns a few instruments that are available.

NO STUDENT IS TURNED AWAY DUE TO FINANCIAL NEEDS



Q. Can I be in BAND and be a part of other activities?

- A. YES! We have students involved in every activity and sport you can think of. Band students are given a yearly calendar listing school and band events. We have very minimal required after school activities for beginning band students.

Q. Can I be in BAND if I wear braces?

- A. YES! Wearing braces is rarely a problem. If needed, waxes are available from your orthodontist to limit lip irritation. Playing an instrument does not affect the length of time that braces need to be worn.

Q. How do I sign up for BAND?

- A. Students who want to take BAND should simply check off BAND on their registration form. If you turned in your registration form but didn't sign up for BAND, it's not too late! Call the Guidance department at JMS to add BAND to your schedule (school phone number on back of this brochure).