



SEPTEMBER 2022

THE PAW PRINT

Mr. Jason Sherburne, Principal

Mr. Rick Dillon, Assistant Principal

Principal Message

Thank you to our parents and students for your part and support...together we can make PAWSitive things happen at Longleaf Elementary! We do have some reminders about Arrival and Dismissal below.

Arrival and Dismissal- Updates and Procedures

- Arrival- Early arrival is a major safety issue! There is no supervision before 7:30 am. Please do not drop off your students prior to 7:30 as they are not being monitored. This also pertains to walkers/bikers arriving early on campus. Longleaf before/after care is available for a fee if you have a need. Please contact the front office for more information.
- Dismissal- As a reminder everyone is required to have a car tag in order to receive your student(s) when walking up to the front of the building. If you are not a resident of the apartment complex, Longleaf Preserves, you are asked to use the Longleaf car loop or park in our campus parking lots for dismissal and arrival. We cannot escort kindergarten students down to the gate and release them nor can we walk students off campus. This procedure is to ensure student safety. If you would like to request car tags, you will need to come to the front office with proper identification. Car tags will only be given to the custodial parents.
 - Car Riders-
 - Please leave your car tag visible until you have secured your student(s) in your vehicle. The teachers at the lanes need to know what student(s) they are putting in the car. We appreciate your help in a safe and speedy dismissal. Thank you for your help and cooperation in ensuring a safe and efficient arrival and dismissal.
 - We are asking parents to be courtesy and mindful of the traffic laws when arriving for dismissal. We have been fielding many concerns about parents blocking traffic and impeding others to enter the car loop or overflow parking lot. Traffic concerns on Wickham Road must be addressed by Melbourne PD as we do not have the authority to enforce traffic laws. Thank you for doing your part to make this a safe and efficient process for all! If you have additional questions or concerns, please contact the front office.

Please remember that anytime a transportation method is changed, you will need to follow the below procedures:

- Request for Change in Transportation Plans- Students must bring a note from home if using a different method of transportation or going to a different destination at dismissal time. Transportation changes will never be taken over the phone. If a student is enrolled in Longleaf After Care, it is the parent's responsibility to notify the classroom teacher, as well as Longleaf After Care when transportation plans have been changed.

Dear Longleaf Parents,

The **Safety Patrol Team** requests that all parents dropping off their children in the car loop drive in the lane closest to the curb, drive slowly, and drive to the **farthest cone possible** before stopping at the cone and letting their children out. There will be a Safety Patrol officer waiting to let your child out of the car. The driver/parent should **not** get out of the car to let their child out, instead, let the Safety Patrol officer let your child out. Wait until the Safety Patrol officer has stepped safely onto the curb before you drive away. On behalf of the Safety Patrol Team, thank you for helping everyone at Longleaf stay safe at morning drop-off.



Sincerely,

The Safety Patrol Team

Art Spark!

Art Spark letters went home on Friday, 9/2. Remember, space is limited so please check your student's backpack for the letter to let you know if your child will be attending this semester. Thank you, as always, for supporting the arts!



National Elementary Honor Society

Our Longleaf Chapter of National Elementary Honor Society has begun for this school year. We held our first meeting for officer nominations and committee selection. Our induction ceremony will take place at 5:30pm on September 20, 2022, in the Longleaf Café. In Addition: All committees will meet after school on September 20 to get started. Nominees for Officers have begun campaigning and our election will be held at our general membership meeting on September 27, 2022. Our first Volunteer Yard Workday is Saturday, October 1. All NEHS members and their families are invited to attend.



dsp

FALL PORTRAITS

ORDER BEFORE
PICTURE DAY



LONGLEAF ELEMENTARY SCHOOL

School Code: 4742

PICTURE DAY ON: TUESDAY, SEPTEMBER 20, 2022

[HTTPS://VANDO.IMAGEQUIX.COM/G1000941036](https://vando.imagequix.com/G1000941036)

To access your gallery enter your Student ID or school name as shown.



- ❀ SEPTEMBER 14 • DOMINO'S PIZZA SPIRIT NIGHT 4-8 PM
- ❀ SEPTEMBER 20 • FALL PORTRAITS
- ❀ SEPTEMBER 27 • WALK-ON'S SPIRIT NIGHT 4-8 PM
- ❀ OCTOBER 1 • NEHS VOLUNTEER YARD WORKDAY
- ❀ OCTOBER 22 • FALL FESTIVAL 11 AM – 3 PM



We are happy to share that we will be opening opportunities to eat lunch with your student! We will host these opportunities on Thursdays. We will have a max of 25 spots each week. We are asking families to limit signing up to once a month to give others the opportunity.

The procedures below will need to be followed to maintain safety across our campus: Registered Volunteers or School Designees will provide supervision at all times!

1. Sign-up/Pre-Register through the Google Link
 - a. <https://forms.gle/weDa1DKBmXNnpCdD9>
2. Come at your students designated time! We will not call students out of class early.
3. Sign-in at the front office with proper ID and get a badge
4. Visitors will be escorted to our designated “Bobcat Lunch Bunch” area located in the Commons
5. Students will be dropped off in the area by their teacher and picked-up when their lunch time ends
6. Visitors will check-out in the front office when their student is picked-up by the teacher
 - a. If you have multiple students, you will need to check-out and check back in at their designated time as we will not have a waiting area

Safety Reminders:

- 🐾 Parents may not enter the cafeteria or go through the lunch line
- 🐾 Only contacts on the student registration form will be allowed to eat with the students
- 🐾 Other classmates will not be allowed to join your student for lunch
- 🐾 Outside food will remain with the parents as well as any leftovers
- 🐾 Parents also have the option of checking their student out and taking them off campus for lunch

PAWS at Longleaf

Longleaf is in its sixth year as a Positive Behavioral Intervention School (PBIS) encouraging our Bobcats to use their PAWS expectations on a daily basis. Students earn Buddy Bucks as well as “PAWS”itive Referrals for exhibiting these schoolwide expectations. Students will have many opportunities to spend their Buddy Bucks throughout the year (classroom rewards, Buddy’s Place and Bobcat Bash). When a student earns a “PAWS”itive Referral, they will receive their award from either Mr. Sherburne or Mr. Dillon, have their picture placed on the PAWS wall in the cafeteria as well as on our school Facebook page.



P – Positive Attitude

A – Acting Responsibly and Respectfully

W – Wise Choices

S – Safety First

Parents can help support Longleaf by encouraging these character traits at home as well. Check out our Facebook page for our “PAWS”itive Bobcats!

<https://www.facebook.com/LongleafElementaryBPS>



School Advisory Council (SAC) is a school-based group which consists of admin, teachers, staff, parents, and members of the school community. Our SAC meetings are held monthly and are open to the Longleaf community. In September, we met at Gator’s Dockside Melbourne as we venture to build partnerships within the community. On October 5th at 4:15, SAC will meet at the Bearded Chef. Please RSVP to SAC Co-chair, EddyLynn Kledzik for reservations

Kledzik.eddy@brevardschools.org

SEPTEMBER SPIRIT NIGHTS!



DOMINO'S PIZZA

WEDNESDAY, SEPTEMBER 14

4 - 8 PM

5325 N WICKHAM RD UNIT 103



WALK-ON'S

TUESDAY, SEPTEMBER 27

4 - 8 PM

8550 NAPOLO DR



Join Us For Longleaf
Elementary School's



FALL FESTIVAL

SATURDAY, OCTOBER 22ND

11AM-3PM

LONGLEAF ELEMENTARY
4290 N. WICKHAM RD
MELBOURNE, FL 32935



FREE HAYRIDE

FREE ADMISSION

BOUNCE HOUSES

CARNIVAL GAMES

SILENT AUCTION (Ends @ 2pm

must be present to win)

FOOD

AND MORE!



Dear Parent/Guardian,

We are pleased to announce that Longleaf is using a new science software program, Penda Learning.

What is Penda Learning?

Penda Learning is an innovative learning and intervention program that is available online for students in grades 3-6. Penda Learning is used to assist with learning and studying topics that are taught in science. Your student has unlimited access to Penda Learning at no charge! Your student can sign into Penda Learning on any computer or mobile device with Internet access, including smartphones!

How You Can Support Your Student?

Remind your student to check for weekly assignments to complete for classwork and/or homework.

Provide computer access for your student to use Penda Learning for at least 30-minutes per week from home.

Show interest in and monitor your student's progress-have your student sign into their account then click on "My Progress."

Encourage students to work on any activities they have not achieved 8-% or better-go for the green (mastered)!

Encourage your student to use Penda Learning during school breaks/holidays to keep progress moving!

Each student at Longleaf has been given login information and should know how to log in and use Penda Learning- Penda is very simple to use! We hope your student will take full advantage of Penda Learning.

Thank you for your support!
Mrs. Beck

How to Access Penda Learning from home

Go to <http://www.pendalearning.com>

Click on "Login" button found in top right corner of screen, or bottom right corner of screen on mobile device.

Enter Center ID# 32934LES

Enter student's User Name: Student's 7 Digit Number@st.brevardschools.org

Enter student's Password: Student's 7 Digit Number@st.brevardschools.org

Click the Sign In button

October COACHES CORNER WITH COACH ATKINS

Coach Atkins is Back!
Hello Bobcat families! I am happy to announce that on 9/12 I returned from my maternity leave and am ready to have a FANTASTIC FUN FILLED YEAR with your students!



WALK TO SCHOOL DAY!

It is almost time again for the annual WALK TO SCHOOL DAY EVENT! The event will take place before school on Wednesday, October 12th. All Bobcats and their families are encouraged to participate! Keep your eyes out for more details to come.

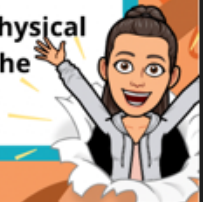


What's going on in PE this Month

In honor of the upcoming walk to school day, we will be discussing roadway safety. We will also be starting our gymnastics unit and learning about the importance of muscular strength and flexibility.

What can you do at home?

- This month it would be helpful to discuss roadway safety with students as we prepare for Walk to School Day.
- Ask your students what new gymnastic movement elements they are learning.
- Be active together! Students only have PE once a week but it is important to get physical activity time in everyday. Going for a walk after dinner or having a dance party in the living room are great ways to be active from home.



Interested in Volunteering?

Volunteers provided 856 hours to Longleaf during August! They help with various tasks for teachers, office staff, and other areas on campus. If you are a volunteer and not sure how to get started, attend a volunteer orientation. Monthly or bi-monthly volunteer orientations will be scheduled as new volunteers are approved.

Upcoming volunteer orientation are:

- Wednesday, September 14 at 9:30 AM
- Friday, September 23 at 8:00 AM

If you would like to become a volunteer, please follow the instructions at the district webpage: <https://www.brevardschools.org/Page/11104>

You must complete the online application and have fingerprinting done at the district security office. It can take up to 90 days to be approved. The volunteer status must be updated annually.

Once approved or if you are not sure of your status, please contact Eddy Lynn Kledzik, the volunteer coordinator by email – Kledzik.eddy@brevardschools.org .

Thank you for serving Longleaf!



Volunteers

Thank you to the volunteers who have been helping the last few weeks. Volunteers have already accumulated nearly 500 hours since the start of August!

If you are interested in volunteering, please see go to the district webpage for information: brevardschools.org/site/Default.aspx?PageID=2327

If you are already an approved volunteer and would like to get started, please email our volunteer coordinator, Mrs. Kledzik (Kledzik.eddy@brevardschools.org), to be invited to an orientation and get started.

Attention Business Owners!

Longleaf thanks all the Partners in Education who support our school by donating items, participating in spirit nights, purchasing banners for the fence, and more! Longleaf is always looking for businesses to become a Partner in Education. We look forward to building relationships with Longleaf community owned businesses. Please reach out to Ms. Taylor Gabreski (Gabreski.TaylorLeigh@brevardschools.org) or Mrs. EddyLynn Kledzik (kledzik.eddy@brevardschools.org) to get started!



Longleaf Facebook Page

Did you know the Longleaf Facebook page is kept up to date sharing upcoming events as well as a peek into the fun at Longleaf? Check out our Bobcats at:

<https://www.facebook.com/LongleafElementaryBPS>

Contact Us

Office 321-242-4700 • Fax 321-242-4708 • Hours 7:30am-3:30pm

Address 4290 N Wickham Rd, Melbourne FL

Website: <http://www.brevardschools.org/longleafes>



PLEASE JOIN US

PTO meeting OCTOBER 11 at
6:00pm
in the Media Center

Longleaf families,

We want to send a huge thank you to everyone that has participated in the Read-A-Thon, our first official PTO fundraiser. **Our school read a total of 42,643 minutes, 218 students logged reading sessions, and we have made \$14,673.75 profit thus far - all of which are absolutely incredible!** This money will go towards events for students/families, technology needs, requests from teachers for things their grade needs, and other things that the school needs help with.

Don't forget that students who received donations have until 9/19 to spend their Rat Bucks in the online store; they can no longer record minutes, but they can still receive donations up until the 19th.


Thank you again!
Longleaf PTO



Longleaf Elementary School PTO Membership

You are invited to join the Longleaf Elementary School PTO (Parent/Teacher Organization)! We are a brand-new organization, and we are looking for volunteers like YOU! Your PTO needs your unique talents, to help build community, volunteer, and support the school with fundraising. We are kicking off the year with a Read-a-thon to fundraise for fun student activities. We will also be hosting the Fall Festival, a Turkey Luncheon, Wonderland Holiday Gift Shop for kids, and a tentative Fun Run in the Spring to help fund for a new track.


The purpose of the PTO is to enhance and support the educational experience at Longleaf Elementary School, to develop a closer connection between school and home by encouraging parental involvement and improve the environment at Longleaf Elementary through volunteer and financial support.

 If you would like to volunteer during school hours at Longleaf Elementary, you can apply online at the BPS District Webpage:

<https://www.brevardschools.org/site/Default.aspx?PageID=2327>



to go directly to the volunteer BPS District Webpage

 Don't forget to check out Longleaf Elementary's Facebook page:

www.facebook.com/LongleafElementaryBPS

For questions, please contact the Longleaf Elementary School PTO at
BobcatPTO4290@gmail.com



Longleaf Elementary School PTO Membership

Please return this completed form to your teacher

Guardian's name: _____

Guardian's name: _____

Cell Phone Number: _____ Email address: _____

Child's name: _____ Grade _____

Child's name: _____ Grade _____

Child's name: _____ Grade _____

Child's name: _____ Grade _____

Availability

During School Hours: _____ Right After School: _____ Evening: _____

- 🐾 All volunteers need to be approved volunteers through the district. You can apply online at the BPS District Webpage:

<https://www.brevardschools.org/site/Default.aspx?PageID=2327>



to go directly to the volunteer BPS District Webpage

- 🐾 For questions, please contact the Longleaf Elementary School PTO:
BobcatPTO4290@gmail.com

PLEASE HELP SUPPORT THE BUSINESSES THAT SUPPORT US!



We Proudly Support LONGLEAF ELEMENTARY

WINGS, RIBS, SEAFOOD & SPORTS



Fl♥rida KidCare

HEALTH AND DENTAL INSURANCE

**COUNT ON
FLORIDA KIDCARE**



Free or Low-Cost Health and Dental Insurance for Kids

Your children could be among the 176,000 kids who may be eligible for low-cost health and dental insurance through Florida KidCare – even if one or both parents are working.

Millions of children count on Florida KidCare for the high-quality health and dental insurance they need from birth through their 19th birthday. Florida KidCare is designed to provide services to children at each stage of growth and development. Health and dental services are delivered through quality plans that offer a choice of local doctors, dentists, specialists, hospitals, pharmacies and other health care providers.

Benefits include but are not limited to:

- Doctor Visits
- Surgeries
- Checkups
- Immunizations
- Vision & Hearing
- Prescriptions
- Dental Care
- Emergencies
- Hospital Stays
- Mental Health Services

Florida KidCare includes free, subsidized and competitively priced options based on family income and household size. Most families pay nothing at all for coverage, and many others pay only \$15 or \$20 per month. Families who do not qualify for free or subsidized coverage may purchase a competitively priced plan.

Lawfully residing immigrant children are eligible without a waiting period, and information about a parent's immigration status won't be asked.

With no application fee and year-round enrollment, the time to apply is always now. Simply fill out the application, and Florida KidCare will match your child with the right option.

Apply online at floridakidcare.org or call **1-888-540-KIDS (5437)**.

Help Your School Earn Money



School Bucks



Benefiting Brevard Public Schools

Here's how.

Register your CCU Visa Credit or Debit Card and **CCU will make a donation to the school of your choice.** Urge your friends to do the same and together we can all make a difference.

How it works.

Fill out the simple and secure online form at: **www.ccufloida.org/bucks** CCU will give a donation to the school you choose.

Who can participate.

Any CCU member who has a valid CCU Visa Credit Card or Debit Card. If you have more than one card, you can register them all.*

For more information or to register a card, go to **www.ccufloida.org/bucks**



*One registration per card. Cards issued to Savings Accounts or Health Savings Accounts are not eligible. Program runs annually from August 1 through July 31 of each year. Registrations expire July 31 of each year. To generate a new donation, submit a new online registration after July 31. Program may be cancelled by CCU and program terms or amount of donation may be changed by CCU without notice. No member or card information will be provided to Brevard Public Schools or any third party. **Federally Insured by NCUA**