

THE PAW PRINT

February 2023 Issue

Bobcat Buzz:

Want to see what cool things are happening at Longleaf during the week? Check out the Bobcats on Facebook! Peek at what some of our Bobcats are up to and reminders for any upcoming events.



<https://www.facebook.com/LongleafElementaryBPS>

February

Monday	Tuesday	Wednesday	Thursday	Friday
	Morning Mile for Grades 1-6 Mondays, Wednesdays, Fridays 7:30 AM	1 Class Picture Day Teacher Appreciation Committee Meeting for PTO / Volunteers 3:00 Jeremiah's Ice Night 3-9 PM	2 Clubs & 6th Grade Group Picture Day Lunch Bunch Thursdays Read the Paw Print for info to sign-up	3 Coffee Cart for Longleaf Staff Early Release
6	7 	8 PTO Meeting 3:00 PM Spirit Nights: 321 Ice Cream Bar 5-9 PM Texas Roadhouse Rockledge/Viera 4-9 PM	9 	10 Early Release 4th-6th Grade Track Tryouts During Team Time
13	14 	15	16 STEAM NIGHT 5-7 PM	17 Early Release
20 Regular School Day for ALL (Hurricane Nicole Make-Up Day)	21	22 BUBBAKOO's Spirit Night 4-9	23 Bobcat Bash	24 Early Release
27	28	March 1 — SAC Meeting March 13-17—Spring Break March 20—No School / Teacher		

Save these Dates!



2/1

2/2

2/8

2/16

2/20

2/22

BLACK HISTORY MONTH

4290 N. Wickham Road.
Melbourne, FL 32935

321-242-4700

Principal:
Mr. Jason Sherburne
Assistant Principal:
Mr. Rick Dillon



Yoop's February Challenge

Keep up the hard work on I Ready for a chance to win a

SWEET treat this February.

5 winners from each grade level will get some ***SWEET*** surprises during lunch time!

These winners will also get to share their treats with a FRIEND OF THEIR CHOICE!



February winners will be pulled Friday, February 24th, and enjoy their treats on

Tuesday, February 28th!

Good luck and keep working HARD!



ATTENTION BUS RIDERS!

Parents of bus riders:

Just a reminder that all students that ride the bus to or from school will need to have a bus badge with the student's barcode. Each student was issued a badge at the beginning of the year. One replacement will be provided free of charge, but any further replacements will be charged to the parent. ALL replacement requests will need to come from the parent to the front office.



If you prefer to put the barcode on your student's phone, it can be accessed through the Brevard Focus App. Please follow these instructions to access the barcode:



1. Download Brevard Focus App
2. Log in using your student's district email address: (i.e. studentid@brevardschools.org)
3. Log in to Microsoft using your student's district email address (i.e. studentid@st.brevardschools.org)
4. Enter Password
5. Click on ☰
6. Click on VirtualID Badge



VALDERRAMA
ORTHODONTICS

903 Jordan Blass Drive, Ste 102
Melbourne, FL 32940
or
610 Barnes Blvd
Rockledge, FL 32955



Back-to-School Program

Student Discount + Donation to Your School!

Looking for an amazing smile?

Get the smile you will be proud of at Valderrama Orthodontics. When you start braces or Invisalign® during the 2022/2023 school year, Valderrama Orthodontics will give you 5% off of braces or Invisalign and will donate \$100 to your school of choice

“How it Works”

1. Make an appointment for your complimentary exam by calling: Valderrama Orthodontics (321) 425-5050.
2. Let Valderrama Orthodontics know that you would like to participate in the Back-to-School Program.
3. Let Valderrama Orthodontics know which school you attend, and we will take care of the rest.



HOW TO AVOID A 'HAIR RAISING' EXPERIENCE



- Watch for signs of head lice. **Check your children every few days.** Lice are easier to eliminate if caught early.
- Teach your children not to share hats, headgear, scarves, headphones and grooming items (combs, hairbrushes, etc.) and to avoid direct head-to-head contact.
- To kill lice on bedding, clothes, etc., wash and dry them as you would ordinarily. **NEVER add any pesticide.** Vacuum materials that cannot be washed.
- If you are concerned about head lice on carpets or furniture, vacuum them thoroughly or wipe smooth surfaces with a damp cloth.
- Wash stuffed animals or vacuum them thoroughly. **NEVER spray them with a pesticide.**
- To kill lice on brushes, combs or hair accessories, wash them with hot, soapy water. **NEVER spray them with a pesticide.**

10 Tips for manual removal

1. Work in a well lighted area or use a flashlight and hand lens.
2. Use a grooming comb or hairbrush to re move tangles. A hair detangler spray or other hair conditioner may aid in this process.
3. Divide the hair into sections and fasten off the hair that is not being worked on.
4. Use a lice comb to detect and remove lice and nits. See figure 1 and figure 2 in this brochure.
5. Go through hair sections from the scalp to the end of the hair. Nits are usually found close to the scalp.
6. Dip the comb in a cup of hot, soapy water or use tape to remove lice, nits or debris from the comb.
7. Sift through the same section of hair and look for attached nits and live lice.
8. Move on to the next section until the entire scalp and all hair has been checked.
9. Screen the infested person every day for 10 days and regularly thereafter.
10. If additional nits (at least 3-5 per day) are discovered, another manual search is recommended.

"Manual removal is the safe alternative and necessary component of any head lice treatment regimen." -National Pediculosis Association

You can completely control a head lice infestation with manual removal alone. You **cannot** completely control head lice with head lice shampoos alone. You **must** combine shampoo treatment with manual removal.

A PARENT'S GUIDE TO THE 'NITTY-GRITTY' ABOUT HEAD LICE



Paul Guillebeau and Gretchen Van De Mark

Head Lice 101: THE BASICS

Do not panic! Head lice are not an emergency and, in most cases, do not pose any health risk. However, misuse of pesticides and use of unlabeled treatments (ex., kerosene) can pose a health risk.

Head lice **cannot** live off a human host for more than 24-48 hours.
Head lice **cannot** live on pets.

Head lice **cannot** reproduce in carpets, furniture or other household furnishings.

Pesticide sprays do little or nothing to control lice. Never treat your home, car, furniture, beds, pillows, or clothing with pesticides (e.g. 'lice bombs,' flea bobs, sprays, etc.) in an attempt to control head lice. You will expose yourself and your family to unnecessary pesticide risk.

Head lice can affect people of any socioeconomic background and ethnicity. They do not imply a lack of hygiene or cleanliness of the infested person.

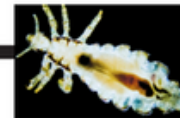
If your school sprays rooms, buses, furniture, etc., to control head lice, ask them to stop immediately. Refer your school to the Cooperative Extension brochure entitled *A School's Guide to the 'Nitty-Gritty' About Head Lice.*

Head lice are very common among all classes of people. More than 12 million people, mostly children and school personnel, get head lice per year.

Direct head-to-head contact with an infested person is the main way head lice are transmitted, but they may also be transmitted by sharing hats, scarves, headphones, combs and other hair accessories. **Lice cannot hop, jump, or fly, but they can crawl rapidly.**

The best treatment for head lice is manual removal (see '10 tips for manual removal' in this brochure).

If a lice shampoo is warranted, ask your doctor or pharmacist for specifics on the product and **follow all label instructions exactly. Misapplications can be ineffective and dangerous as well.**



Head louse
Pediculus capitis

Head lice are small, wingless parasitic insects. They are typically 1/6 - 1/8 inch long, brownish in color with darker margins. The claws on the end of each of their six legs are well adapted to grasping a hair strand.

A child cannot 'catch nits.'
Nits (lice eggs) can only be laid by live lice.

Female head lice glue their grayish-white to brown eggs (nits) securely to hair shafts. The eggs are resistant to pesticides, and they are difficult to remove without a special 'nit-comb.' The nits are generally near the scalp, but they may be found anywhere on the hair shaft.



Nits (lice eggs)
photo courtesy of the University of Florida.

extension.uga.edu

Circular 851

Revised February 2017

Published by the University of Georgia in cooperation with Fort Valley State University, the U.S. Department of Agriculture, and counties of the state. For more information, contact your local UGA Cooperative Extension office.



NEHS

National Elementary Honor Society

NEHS For February

Meetings:

2/7 2:30-3:30

Committee Meeting: Paw Pals
Mrs. Kaiser's Room 611

2/7 2:30-3:30

Committee Meeting: Service
Ms. Henriquez Room 605

2/8 2:30-3:30

Recess Garden Cleanup
All NEHS Members Welcome

2/21 2:30-3:30

Officer Meeting
Ms. Guarino's Room 607

2/28 2:30-3:30

General Membership Meeting in Media Center

Service Project:

Humane Society Donation Drive

Bring in any item for pets on the list and place in the collection boxes around the school.



HUMANE SOCIETY DONATION DRIVE

Longleaf Elementary is participating in our annual donation drive for the Humane Society hosted by our NEHS Service Committee. The wish list of needed items is included. Please consider sending in donations for this community project.

January 5, 2023- March 10, 2023

Bring your donations to school with you and place them in the provided bins throughout the campus.

SINCE 1957

Wish List Items

Feline Items:

- Dry Cat & Kitten Food
- Canned Cat & Kitten Food
- Cat & Kitten Treats
- Clay Litter (non-clumping)
- Litter Boxes & Scoopers
- Cat Toys
- Kitten Formula (KMR)

Canine Items:

- Dry Puppy & Dog Food
- Dog Toys (Rubber Kong)
- Dog Treats/Milk Bones
- Leashes
- Collars
- Hard Plastic Dog Toys
- Puppy Formula (Esbilac Powder)

Shelter Items:

- Guinea Pig Food
- Pine Shavings (no cedar)
- Rabbit Food
- Bird Food
- Clorox Bleach
- Heating Pads
- Multi-Purpose Cleaner
- Cotton Balls
- Trash Bags (13 gals. & 30 gals.)
- Windex (window cleaner)
- Rubbing Alcohol
- Stuffed Animals
- Plastic Gloves (medium & large)
- Paper Towels
- Blankets, Comforters & Towels
- Mops & Buckets
- Brooms & Dust Pans
- Laundry Detergent

Cash is great but we also use gift cards for

Home Depot, Lowe's Home Improvement Warehouse, Office Depot, Petsmart, Petco, Pet Supermarket, Target, Staples and/or Wal-Mart are always appreciated to help us with our shopping needs too.

"No more homeless pets...Spayed / Neutered...Adopted"

FEBRUARY

COACH'S CORNER



HEALTHY HEART HALF MARATHON

			1	2	3	4
			Walk or run 1/2 Mile	Walk or run 1/2 Mile	Rest Day!	Walk or run 1/2 Mile
5	6	7	8	9	10	11
Walk or run 1/2 Mile	Rest Day!	Walk or run 1/2 Mile	Walk or run 1/2 Mile	Rest Day!	Walk or run 1/2 Mile	Walk or run 1/2 Mile
12	13	14	15	16	17	18
Rest Day!	Walk or run 1/2 Mile	Walk or run 1/2 Mile	Rest Day!	Walk or run 1/2 Mile	Walk or run 1/2 Mile	Rest Day!
19	20	21	22	23	24	25
Rest Day!	Walk or run 1 Mile	Walk or run 1 Mile	Rest Day!	Walk or run 1 Mile	Walk or run 1 Mile	Rest Day!
26	27	28				
Walk or run 1 Mile	Walk or run 1 Mile	Walk or run 1.5 Mile				

WHAT'S GOING ON IN PE THIS MONTH?

This month students in all grades will be participating in a soccer unit. Towards the end of the month students will begin practicing field day events.

WORDS TO KNOW:

Dribble Strike



EXCITING EVENTS!

BOBCAT BOWL!

On February 10th two sixth grade classes will be playing each other in the Bobcat Bowl! This awesome event will take place during their Team Time that morning.

Longleaf Track!

Grades 4-6 will have an opportunity to tryout for the Longleaf track team during Team Time on February 17th. Keep an eye out for more information to come.

Moring Mile

Takes place every Monday, Wednesday, and Friday mornings at 7:30 on the PE field for 1st-6th graders.

PE AT HOME



Students have PE once a week, but it is important to try and stay active everyday! Here are some ways to stay active outside of PE...

- Work on your soccer skills. Practice dribbling in the yard or at the park.
- Try the Healthy Heart Half Marathon Challenge posted above!
- Try the video linked here!

<https://www.youtube.com/watch?v=tdLQqB2Ft7U>

FIELD DAY



Volunteers Needed

Longleaf's Field Day is coming this Spring! Field day for PreK-2 grade will be March 9th and grades 3-6 will be March 10th.

If you would like to attend this event, you MUST be signed up as a volunteer to help. If you are not a registered volunteer that is signed up to help during the event you will NOT be able to attend. Keep an eye out for more field day information coming soon regarding volunteer signs ups and event times.



YEARBOOK

ORDER YOURS TODAY!

2022-2023 | Longleaf Elementary School

For only \$25 the 2022-2023 Yearbook is something you don't want to miss. Packed with this year's memories!



Yearbooks are not guaranteed for students/parents that have not pre-ordered.

ORDER ONLINE NO LATER THAN MARCH 10th 2023

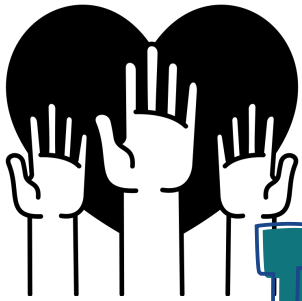
BUYTHEYEARBOOK.COM

ENTER SCHOOL ID: 710568

*A 5% service fee will be added to online orders.



Scan with mobile device to order



VOLUNTEER INFORMATION

All approved BPS volunteers attend a volunteer orientation prior to volunteering at Longleaf to see what opportunities for involvement are available, meet other volunteers, and learn our policies. This includes volunteering to assist teachers with parties, events, and field trips.

If you are an approved volunteer and have not attended a Longleaf volunteer orientation, please sign-up using this link:

<https://www.signupgenius.com/go/805044faaa82da1f58-volunteer>

If you are not a volunteer, and would like to become one, please follow the instructions at the district webpage:

<https://www.brevardschools.org/Page/11104>

You must complete the online application and have fingerprinting done at the district security office. It can take up to 90 days to be approved. The volunteer status must be updated annually.

Volunteer orientations will be scheduled as new volunteers are approved.

If you are not sure of your status, or have any questions about volunteering, please contact our Volunteer Coordinator, EddyLynn Kledzik

Kledzik.eddy@brevardschools.org



Lunch Bunch is a new initiative this year to provide families an opportunity to have lunch in school. This program is available on Thursdays and supervised by our approved BPS volunteers or school designees. The families of our Bobcats are asked to sign up to attend lunch on a monthly basis to provide opportunities to all our families. The following procedures are followed to maintain safety on campus.

1. Come at your student's designated time. We will not call students out of class early.
2. Sign-in at the front office with proper ID and get a badge.
3. Visitors will be escorted to our designated "Bobcat Lunch Bunch" area located in the Commons.
4. Students will be brought to/from the lunch area by our volunteer staff.
5. Visitors will check-out in the front office when their student is picked-up by the teacher. If you have multiple students, you will need to check-out and check back in at their designated time as we do not have a waiting area.

Safety Reminders:

Parents/guests may not enter the cafeteria or go through the lunch line. Contacts on the student registration form are allowed to eat with the students. The contact may bring an additional guest with them. Other classmates will not be allowed to join your student for lunch. Outside food will remain with the parents as well as any leftovers. Parents also have the option of checking their student out and taking them off campus for lunch.

To sign up for lunch bunch, click the link and select an open date. Fill in the appropriate information. <https://forms.gle/pk4xxZrrQSk4L3Xf9>

You will receive a confirmation and reminder the Sunday prior to your visit. If you have any questions, please contact Mrs. Kledzik
Kledzik.eddy@brevardschools.org

LONGLEAF TRACK TEAM

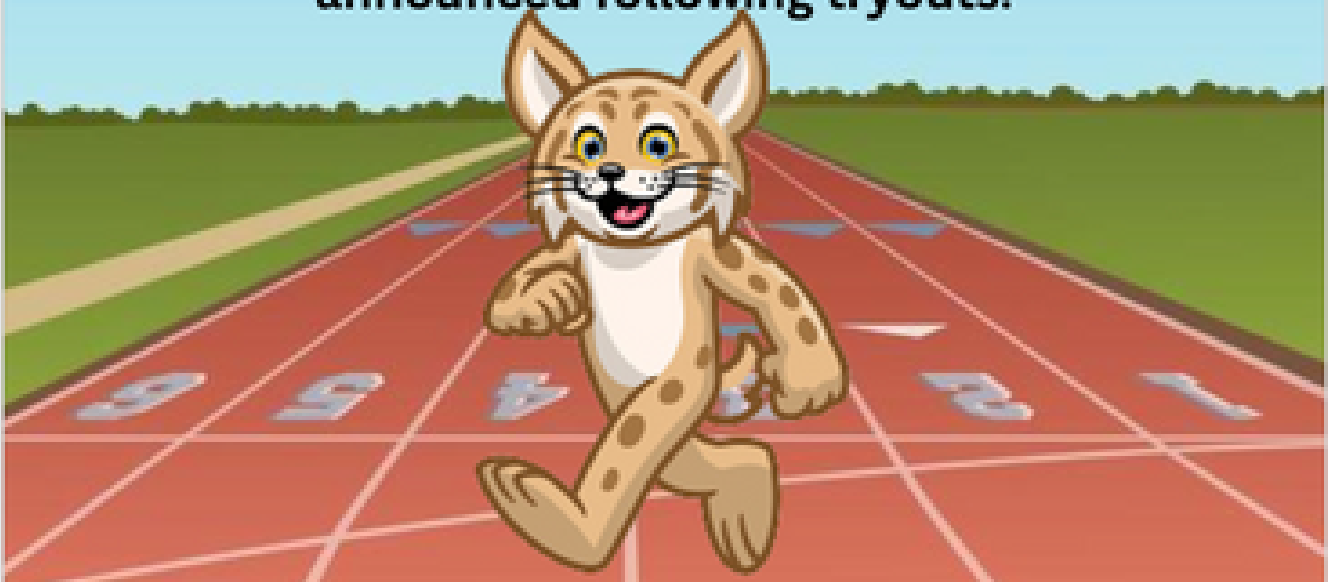


4TH -6TH GRADE

TRYOUTS 02/17/23



Coach Atkins will be coaching Longleaf's track team this year for students in grades 4th-6th. Tryouts will be February 17th during Team Time. Students can sign up for tryouts on the signup sheet outside of Coach Atkins classroom (603). Practices for track will be afterschool on Mondays and Wednesdays leading up to the track meet on April 15th. A start date for practices will be announced following tryouts.



Buddy's Buddies



Longleaf is so thankful to have
such amazing Partners In Education!

