



HOME OF THE BOBCATS!

THE PAW PRINT

January 2023 Issue



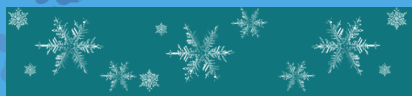
January 2023

Bobcat Buzz:

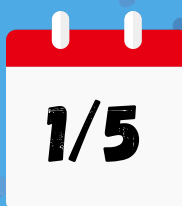
Want to see what cool things are happening at Longleaf during the week? Check out the Bobcats on Facebook! Peek at what some of our Bobcats are up to and reminders for any upcoming events.



<https://www.facebook.com/LongleafElementaryBPS>





Save these Dates!



Monday	Tuesday	Wednesday	Thursday	Friday
2	3	4 Jeremiah's Ice Night 3-9 PM	5 School Resumes	6 NO Early Release this Friday
9 ASP Classes Resume this Week	10	11 PTO Meeting 3:00 PM SAC Meeting 4:15 PM 321 Ice Cream Bar Spirit Night 5-9 PM	12  Thursday Bobcat Family Lunch Bunch (by Sign-Up) Resumes	13 Early Release Fridays Resume
16 Martin Luther King Jr Day Holiday for all	17	18 Domino's Pizza Spirit Night 4-8 PM	19 Report Cards Issued	20 Early Release
23 Celebrate Literacy Week Book Fair this week!	24  TAKE A DEEP DIVE INTO LITERACY SPLASH INTO NEW WORLDS	25 Literacy Night 5-7 PM Book Fair Conferences Games Food	26  SCHOLASTIC Book Fair	27 Early Release
30 Science Fair	31	Morning Mile every Monday, Wednesday, Friday 7:30 AM		



 4290 N. Wickham Road.
Melbourne, FL 32935

 321-242-4700

Principal:
Mr. Jason Sherburne
Assistant Principal:
Mr. Rick Dillon

**Happy
New Year,**

Bobcats!

2023





Yoop's January Challenge

HAPPY NEW YEAR

10 lucky winners from each grade level will have a chance to pick a prize or treat from the *Woot Woot Wagon!*



January winners will be pulled and announced in the morning on **Monday, January 30th**.

Mrs. Vannorsdall will bring the *Woot Woot Wagon* to winners on

Tuesday, January 31st!

Kindergarten and 1st grade entries are based on time on task per week (30 minutes or more) and lessons passed rate.

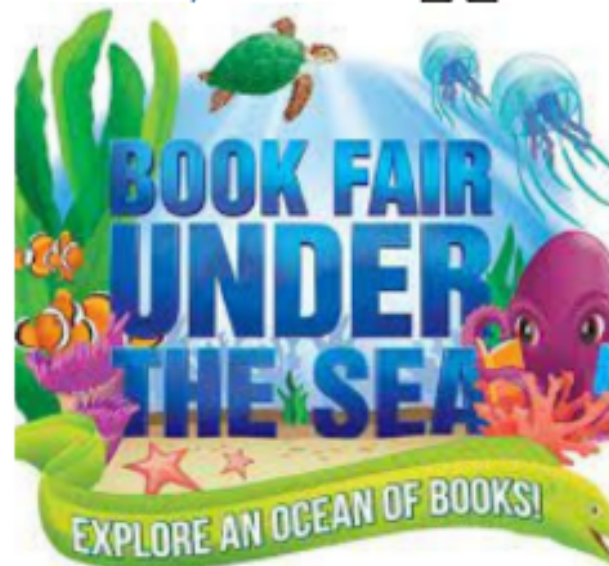
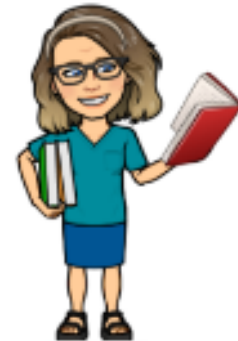
Grades 2-6 entries are based on completed Bingo Card or punch cards

Good luck and keep working HARD!



Literacy & Library

Ms. Vannorsdall and Ms. Kledzik
Celebrate Literacy!



Literacy Week 2023

- January 23-27
- Dress Up Spirit Days
- Books read on announcements
- Book Fair during Media class
- Literacy Night for the whole family on Wednesday, January 25 from 5:00-7:00 PM
- And more!!

Each month readers earn dog tags and a treat for reading and submitting reading logs. Turn in December Reading Log to the Media Center by January 9 and begin the January log!

January

COACH'S CORNER



EXCITING EVENTS!

This month 6th graders will be learning Bobcat Ball. A game that allows students to work together with their team to implement various offensive and defensive strategies. Classes will compete in playoffs for a chance to play in a final Bobcat-Bowl game in February.

Moring Mile

Takes place every Monday, Wednesday, and Friday mornings at 7:30 on the PE field for 1st-6th graders.

New Year 2023 Fitness Goal

What is your fitness goal for 2023?



Eat more veggies???



Go for a daily walk???



Try a new sport???

Play outside each day???

Eat less junk food???



WHAT'S GOING ON IN PE THIS MONTH?

This month students in grades 4-6 are learning about offensive and defensive strategies. 6th graders will begin playoffs for the Bobcat-Bowl. K-3 students will begin a striking unit.

WORDS TO KNOW:

Offense Defense
Striking



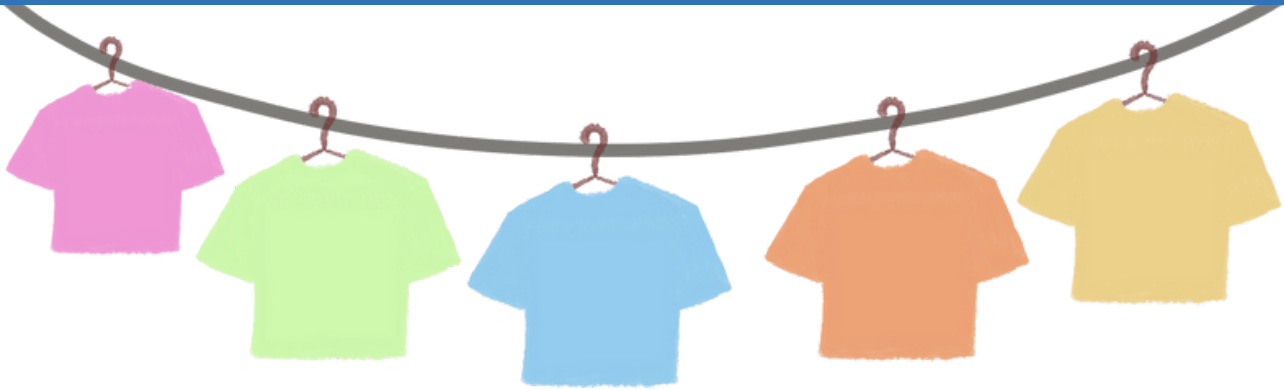
PE AT HOME



Remember, your student(s) only has PE once a week, it is important to be active every day. Here are some things you can do at home:

- Set a fitness/healthy goal for the new year and STICK TO IT!
- Discuss the meaning of offense and defense (grades 4-6th)
- Practice striking with different body parts with a fun game of Keepie-Uppie! (Grades K-3)
- Check out this New Years exercise video using the link... https://www.youtube.com/watch?v=dMRIbj_av14

The Clinic Needs Clothes



Clinic Needs Clothes for Boys.

If you have any gently used clothing items, the clinic is in need of stretchy shorts and shirts in all children's sizes. Please send in any clothing donations to the front office.



Are you looking for a rewarding experience? Well, look no more... become a mentor today!

Mentoring is one of the most rewarding experiences you can have with Brevard Public Schools. Schools across the district are looking for people who want to mentor students, so there is a great chance that you will find a good fit for your schedule.

The first step to become a Mentor for Brevard Public Schools is to sign up as a volunteer and complete fingerprinting/background check.

Volunteer Application Website <https://apps.raptortech.com/Apply/NjE6ZW4tVVM=>

After you complete your application AND fingerprinting, please email your name and date you were fingerprinted by Brevard Public Schools in District Security to: speir.chana@brevardschools.org

Fingerprints/background checks can take up to 4 weeks.

****Fingerprinting fees have been waived at this time, so there is no cost to you****

After your volunteer application is approved, you will want to find a school.

You may choose to volunteer at Longleaf Elementary or perhaps a school near your work/home would be more convenient.

FOR MORE INFORMATION, PLEASE VISIT THE MENTORING WEBPAGE:

<https://sites.google.com/share.brevardschools.org/navigation/home>

1. VOLUNTEERS MUST MAINTAIN STRICT CONFIDENTIALITY concerning information they see and hear concerning students and staff, including students' grades, records, and abilities.
2. Volunteers **DO NOT** discipline students. Please report discipline problems to the teacher.
3. Volunteers agree to abide by School Board Policy: ADC, Tobacco-Free Schools & Facilities.
4. Volunteers agree to report Child Abuse or Suspected Abuse to site administrator and the Department of Children and Families at 1.800.96ABUSE (1.800.962.2873). Volunteers may not give any medication to students.
5. Volunteers do not diagnose student weaknesses and strengths, prescribe activities for students, or evaluate student progress.
6. Volunteers' discussions with teachers should not interrupt class time.
7. Volunteers should set a good example for students by their manner, appearance, and behavior.
8. Comparing and criticizing teachers and students are not acceptable volunteer behaviors.
9. Volunteers may not hold informal parent/teacher conferences. Volunteers may not conduct personal business at school.
10. Volunteers should never touch students in any way that is aggressive, disciplinary or sexual in nature.
11. Volunteers must guard against private communications with students; (i.e. such as social media, texting, email...).
12. All volunteers must Sign In and Out through our volunteer management system during and after schools hours.
13. All volunteers or visitors **MUST WEAR AN IDENTIFYING NAMETAG** approved by the office of district and Schools security.





2022–23 Florida Assessment of Student Thinking (FAST) Fact Sheet Grades VPK-10 E.L.A. Reading and Grades K–8 Mathematics

FAST Overview

In March 2022, Governor Ron DeSantis signed new legislation that replaces the grade-level Florida Standards Assessments (F.S.A.) in English Language Arts (E.L.A.) and Mathematics with the Coordinated Screening and Progress Monitoring System, also called the Florida Assessment of Student Thinking (FAST) required in [section 1008.25\(8\)](#), Florida Statutes. This fact sheet provides an overview of the new FAST system for grades 3–10 E.L.A. In addition, reading and grades 3–8 Mathematics will be administered for the first time during the 2022–23 school year.

Grades VPK-2 Overview

- The FAST VPK and Kindergarten assessments align with the Florida Early Learning and Developmental Standards.
- The grades 1 and 2 assessments will be aligned to the Benchmarks in Excellent Student Thinking (B.E.S.T.) Standards.
- FAST assessments are administered three times during each school year, and each PM event is tied to a blueprint for the full grade-level content
- These results are for informational purposes only and should be used to identify areas that may need additional instruction and support.
- Each test will be administered in one session • One subject test in a day
- Tests will be computer-adaptive and administered through a secure web browser (headphones required for V.P.K.–2). Items may become progressively more challenging as students successfully respond to items and easier if students answer more questions incorrectly.
- Administered via Renaissance Learning
 - Start Early Literacy - VPK-1
 - Start Reading - 1 & 2

Grades 3–10 FAST Overview

- Grades 3–10 FAST ELA Reading and 3–8 FAST Mathematics assessments align with the [Benchmarks for Excelling Student Thinking \(B.E.S.T.\) Standards](#).
- Because all FAST assessments are computer-adaptive, items may become progressively more challenging as students successfully respond to items and easier if students answer more questions incorrectly.
- FAST assessments are administered three times during each school year, and each PM event is tied to a blueprint for the full grade-level content
 - **PM1** – This administration occurs at the beginning of the school year; it is designed to provide a baseline score so teachers can track student progress in learning the B.E.S.T. Standards from PM1 to PM2.
 - **PM2** – This administration occurs midyear; this administration will provide an interim score compared to the baseline score from PM1.
 - **PM3** – This last administration will provide a summative score that will accurately measure student mastery of the B.E.S.T. Standards at the end of the school year.
- While PM1 and PM2 are for informational purposes only, PM3 will be used for school accountability beginning in the 2023–24 school year.

Fast Fact Sheet Continued...

Brevard's Administration Windows

FAST will be administered during three windows in the school year (PM1, PM2, and PM3). The following windows have been established to provide schools with maximum scheduling flexibility; they do not reflect the amount of time one school will spend administering tests.

- PM1: August 22–September 30, 2022 – Secondary
- PM1: August 7 – September 30 - Elementary
- PM2: January 9, 2023–January 27, 2023 – Elementary and Secondary
- PM3: May 1–May 26, 2023– Elementary and Secondary

Session Lengths

All FAST assessments are administered in one session in one day, and students only take one subject test per day.

VPK-2 Reporting

For the 2022–23 school year, the following information for grades 3–10 FAST ELA Reading and grades 3–8 FAST Mathematics will be reported:

- Scale Score
- Percentile Rank
- Benchmark

Grade-Level	Star Early Literacy	Star Reading	Timing	Star Mathematics	timing
V.P.K.	✓	NA	20 minutes	NA	NA
Kindergarten	✓	NA	20 minutes	✓	30 minutes
1st	PM1, PM2	PM3	20 minutes	✓	30 minutes
2nd	NA	✓	20 minutes	✓	30 minutes

Grades 3–10 FAST Reporting

Only certain information can be reported in the first year of a new statewide assessment system until standard setting takes place and new scale scores are established.

For the **2022–23** school year, the following information for grades 3–10 FAST ELA Reading and grades 3–8 FAST Mathematics will be reported:

- Provisional scores will be linked to an F.S.A. equivalent scale.
- Students will receive an overall scale score and achievement level for the overall scale score on the equivalent scale.
- Students will also receive reporting category scale scores and achievement levels for reporting categories.
- Teachers will see results by benchmark at the student and classroom levels.
- Per F.S. 1008.25, K–10 PM results must be provided to parents within two weeks of their students' test attempts.
- After the close of the window, the Florida Department of Education (F.D.O.E.) will report percentile ranks at the student level for parents, schools, and districts.

Grades/Subject	PM 1 and PM 2	PM3*
Grades 3–10 E.L.A. Reading	90 Minutes	120 Minutes
Grades 3–5 Mathematics	80 Minutes	100 Minutes
Grades 6–8 Mathematics	100 Minutes	120 Minutes

PM1 and PM2

For this transitional year, teachers and families must understand that this information is intended to provide baseline and interim results for PM1 and PM2, respectively. These results are for informational purposes only and should be used to identify areas that may need additional instruction and support. These results should not be considered student achievement designations.

PM3

PM3 provides a summative score at the end of the year to measure student mastery of the grade-level content standards.

In the **2023–24** school year and beyond, F.D.O.E. will report on a new FAST score scale that will be presented for approval to the State Board of Education once the standard setting is conducted in the summer of 2023. For more information on the standard-setting process, please visit the [Standard Setting](#) page on the F.D.O.E. website.

Upcoming District Assessments 2023

January 10	VPK-Grade 2	Reading	FAST Diagnostic 2
January 11	VPK-Grade 2	Math	FAST Diagnostic 2
January 17	Grades 3-6	Reading	FAST Diagnostic 2
January 18	Grades 3-6	Math	FAST Diagnostic 2
January 23- February 24	ELL Students		WIDA
February 6-17	Grades K-6	Reading/ Math	i-READY Diagnostic 2

The links below provide additional information regarding the above mentioned assessments:

► **Florida Department of Education
K-12 Student Assessment**

FAST (Florida Assessment of Student Thinking)

<https://www.fldoe.org/accountability/assessments/k-12-student-assessment/best/>

► **FAST Portal**

<https://ffast.org/fast.html>

► **WIDA for ELL Students**

<https://www.fldoe.org/accountability/assessments/k-12-student-assessment/access-for-ells.shtml>

► **i-READY**

<https://i-readycentral.com/familycenter/what-is-i-ready/>



TESTING TAKING TIPS:

- 1 Get a good night's rest.
- 2 Eat a good breakfast.
- 3 Give your brain a break and breathe.
- 4 Take a walk outside (walk and talk/morning mile) when you get to school.
- 5 Pat yourself on the back and say, "I got this!"
- 6 Do your personal best!

amazonsmile
You shop. Amazon gives.

Support Longleaf PTO while you shop

1

Go to
smile.amazon.com

2

Login to your Account

3

Select/Search
Select your charity

Have you had a chance to select Longleaf Elementary PTO as your Amazon Smile charity? This is a simple way to generate money to support our Bobcats!

**** PLEASE MAKE SURE YOU SELECT LONGLEAF ELEMENTARY PTO IN MELBOURNE, FL. THERE IS MORE THAN ONE LONGLEAF. ****

Directions for setting up Amazon Smile:

How to use AmazonSmile on a web browser: 1. Visit smile.amazon.com

2. Sign in with the same account you use for Amazon.com

3. Select your charity 4. Start shopping! Remember to checkout at smile.amazon.com to generate donations for your chosen charity. Tip: Add a bookmark to make it easier to shop at smile.amazon.com.

How to use AmazonSmile using the Amazon app on your mobile phone:

1. Open the Amazon Shopping app

2. Navigate to the main menu (☰)

3. Tap on Settings and then select “AmazonSmile”

4. Select your charity and then follow the on-screen instructions to turn ON AmazonSmile in the mobile app

5. Once AmazonSmile has been activated in your app, future eligible app purchases will generate a donation for the charity you have selected.

Direct link to shop at Amazon Smile: <https://smile.amazon.com/ch/88-0666625>



Thank you for your continued support!

Longleaf PTO





NEHS

National Elementary Honor Society

NEHS For January

Meetings:

1/12 2:30-3:30 Paw Pals and Service Committee Meeting

1/17 2:30-3:30 Officer Meeting in Ms. G's room 607

1/18 2:30-3:30 Recess Garden Cleanup – all NEHS members and families welcome. Bring your garden gloves.

1/19 Last day to submit 2nd 9 weeks report card to an NEHS advisor

1/25 2:30-3:30 General Membership Meeting (location TBD)

Service Project:

Humane Society Donation Drive begins Jan 5. Bring in any item for pets on the list and place in the collection boxes around the school.



HUMANE SOCIETY DONATION DRIVE

Longleaf Elementary is participating in our annual donation drive for the Humane Society hosted by our NEHS Service Committee. The wish list of needed items is included. Please consider sending in donations for this community project.

January 5, 2023- March 10, 2023

Bring your donations to school with you and place them in the provided bins throughout the campus.

Wish List Items

Feline Items:

- Dry Cat & Kitten Food
- Canned Cat & Kitten Food
- Cat & Kitten Treats
- Clay Litter (non-clumping)
- Litter Boxes & Scoopers
- Cat Toys
- Kitten Formula (KMR)

Canine Items:

- Dry Puppy & Dog Food
- Dog Toys (Rubber Kong)
- Dog Treats/Milk Bones
- Leashes
- Collars
- Hard Plastic Dog Toys
- Puppy Formula (Esbilac Powder)

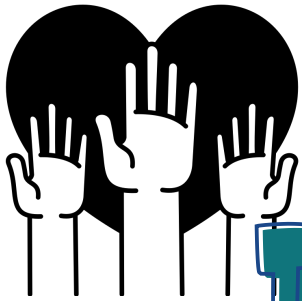
Shelter Items:

- Guinea Pig Food
- Pine Shavings (no cedar)
- Rabbit Food
- Bird Food
- Clorox Bleach
- Heating Pads
- Multi-Purpose Cleaner
- Cotton Balls
- Trash Bags (13 gals. & 30 gals.)
- Windex (window cleaner)
- Rubbing Alcohol
- Stuffed Animals
- Plastic Gloves (medium & large)
- Paper Towels
- Blankets, Comforters & Towels
- Mops & Buckets
- Brooms & Dust Pans
- Laundry Detergent

Cash is great but we also use gift cards for

Home Depot, Lowe's Home Improvement Warehouse, Office Depot, PetSmart, Petco, Pet Supermarket, Target, Staples and/or Wal-Mart are always appreciated to help us with our shopping needs too.

"No more homeless pets...Spayed / Neutered...Adopted"



VOLUNTEER INFORMATION

All approved BPS volunteers attend a volunteer orientation prior to volunteering at Longleaf to see what opportunities for involvement are available, meet other volunteers, and learn our policies. This includes volunteering to assist teachers with parties, events, and field trips.

If you are an approved volunteer and have not attended a Longleaf volunteer orientation, please sign-up using this link:

<https://www.signupgenius.com/go/805044faaa82da1f58-volunteer>

If you are not a volunteer, and would like to become one, please follow the instructions at the district webpage:

<https://www.brevardschools.org/Page/11104>

You must complete the online application and have fingerprinting done at the district security office. It can take up to 90 days to be approved. The volunteer status must be updated annually.

Volunteer orientations will be scheduled as new volunteers are approved.

If you are not sure of your status, or have any questions about volunteering, please contact our Volunteer Coordinator, EddyLynn Kledzik

Kledzik.eddy@brevardschools.org



Lunch Bunch is a new initiative this year to provide families an opportunity to have lunch in school. This program is available on Thursdays and supervised by our approved BPS volunteers or school designees. The families of our Bobcats are asked to sign up to attend lunch on a monthly basis to provide opportunities to all our families. The following procedures are followed to maintain safety on campus.

1. Come at your student's designated time. We will not call students out of class early.
2. Sign-in at the front office with proper ID and get a badge.
3. Visitors will be escorted to our designated "Bobcat Lunch Bunch" area located in the Commons.
4. Students will be brought to/from the lunch area by our volunteer staff.
5. Visitors will check-out in the front office when their student is picked-up by the teacher. If you have multiple students, you will need to check-out and check back in at their designated time as we do not have a waiting area.

Safety Reminders:

Parents/guests may not enter the cafeteria or go through the lunch line. Contacts on the student registration form are allowed to eat with the students. The contact may bring an additional guest with them. Other classmates will not be allowed to join your student for lunch. Outside food will remain with the parents as well as any leftovers. Parents also have the option of checking their student out and taking them off campus for lunch.

To sign up for lunch bunch, click the link and select an open date. Fill in the appropriate information. <https://forms.gle/pk4xxZrrQSk4L3Xf9>

You will receive a confirmation and reminder the Sunday prior to your visit.

If you have any questions, please contact Mrs. Kledzik

Kledzik.eddy@brevardschools.org

Buddy's Buddies



Longleaf is so thankful to have
such amazing Partners In Education!

