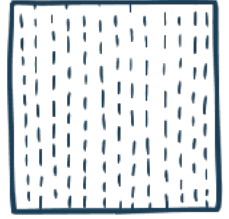
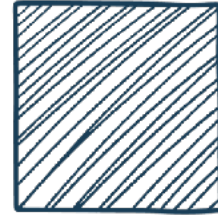
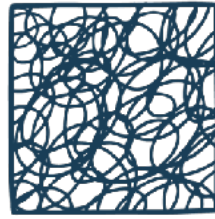
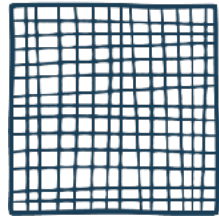


# ELEMENTS OF ART

## LINE

*Scope & Sequence*



**LINE** is the path of a moving dot. Lines can vary in direction and thickness.

**K**



Use a variety of lines: straight, curved, zigzag and curly.

**1**



Outline a shape & explore the feelings certain lines can portray.

**2**



Use horizontal and vertical lines in a drawing.

**3**



Create patterns with lines and create expressive lines.

**4**



Use line to create texture and interest in a composition.

**5**



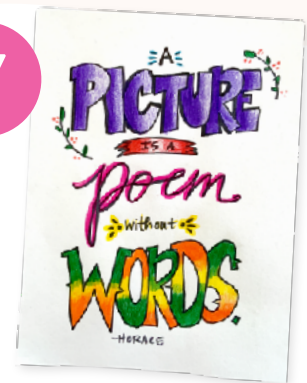
Use contour lines plus use a variety of line to create interest.

**6**



Create abstraction / stylization with lines.

**7**



Use line to plan and create a composition.



# ELEMENTS OF ART

## SHAPE

### *Scope & Sequence*



**SHAPE** is an enclosed area that is flat (two-dimensional). Shapes can be **GEOMETRIC** or **ORGANIC**.

**K**



Identify basic shapes: square, rectangle, circle, triangle.

**1**



Use geometric shapes to create a composition.

**2**



Use geometric & organic shapes to create a composition.

**3**



Use shapes to express emotions and ideas.

**4**



Create a realistic composition with geometric shapes.

**5**



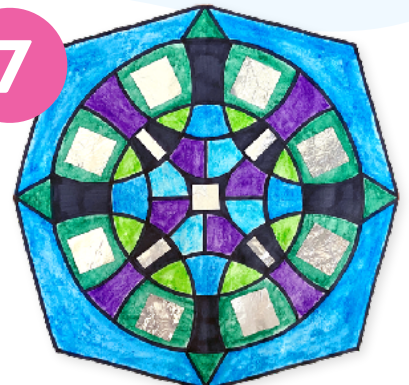
Create an abstracted landscape using organic shapes.

**6**



Create expressive, organic shapes and create compound shapes.

**7**



Create complex shapes using tools.

# ELEMENTS OF ART

## COLOR

*Scope & Sequence*



Red



Blue



Yellow



**COLOR** is created by light reflecting off an object and back to the eye. The primary colors are a set of colors from which all colors can be created.

**K**



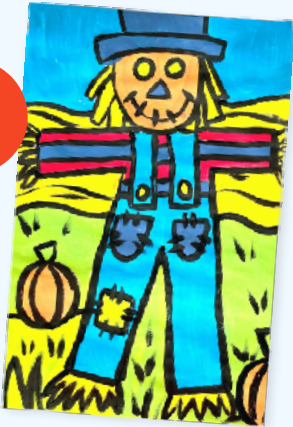
Identify primary colors.

**1**



Use primary colors to create secondary.

**2**



Use primary colors to create secondary colors.

**3**



Use warm and cool colors to create contrast.

**4**



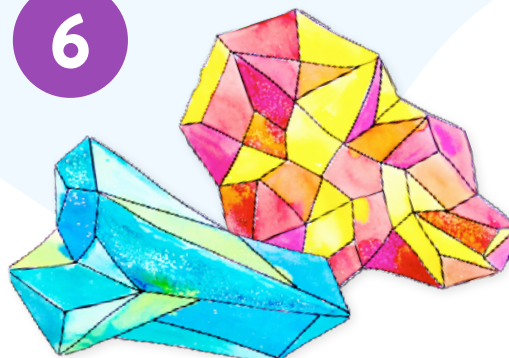
Use complementary colors to create contrast.

**5**



Mix and create analogous & tertiary colors.

**6**

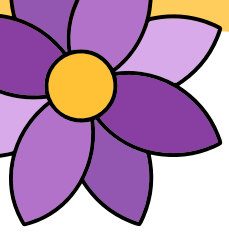


Mix to make new colors, using a planned color palette (warm/cool).

**7**



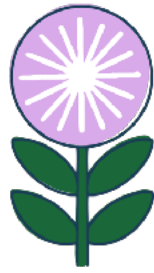
Use color expressively in a composition.



# ELEMENTS OF ART

## VALUE

### Scope & Sequence



**VALUE** is the lightness or darkness of a color. A **TINT** is a color mixed with white and a **SHADE** is a color mixed with black.

K



Create two values using line and color.

1



Learn how to create tints with white paint.

2



Use medium, light and dark values using crayon or watercolor.

3



Create both tints and shades with liquid tempera.

4



Create a variety of values using a different media, like chalk.

5



Use one color and multiple tints & shades to create a monochromatic artwork.

6



Create realistic values to create the illusion of form.

7



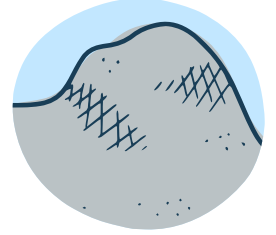
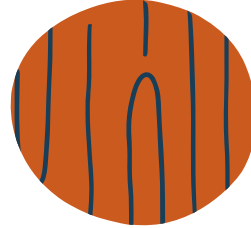
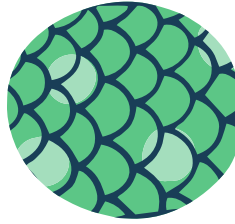
Create realistic representations using a wide range of values.



# ELEMENTS OF ART

## TEXTURE

### Scope & Sequence



**TEXTURE** is the surface quality that can be seen or felt. **ACTUAL TEXTURE** is how something actually feels.

**K**



Use exploratory techniques to create texture, like scraping.

**1**



Create actual texture using a variety of media or through material techniques.

**2**



Create implied texture using line variety.

**3**



Use lines to create realistic texture / directional texture.

**4**



Create both actual and implied texture in a work of art.

**5**



Create implied texture with multiple techniques; masking, dry brushing, spraying.

**6**



Create implied texture using multiple techniques and layers.

**7**

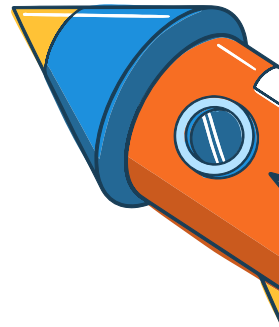
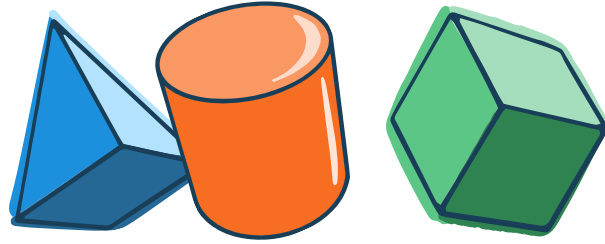


Create actual 3D texture in a work of art.

# ELEMENTS OF ART

## FORM

### Scope & Sequence



**FORM** is a three-dimensional (3D) version of a shape. It has height, width and depth, so it is not flat (2D).

K



Create a simple pinch pot.

1



Create a pinch pot with added details.

2



Create a simple slab.

3



Use slab construction to create a 3D object.

4



Combine slab and hand building.

5



Create coil pots with added slab pieces.

6



Create more complex 3D forms using an armature.

7



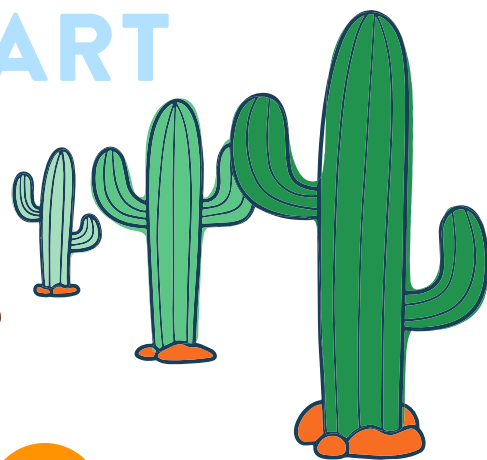
Use multiple layers of slabs and textures.



# ELEMENTS OF ART

## SPACE

*Scope & Sequence*



**SPACE** is the area between, around or within objects. **SPACE** is used to create a feeling of depth in an artwork.



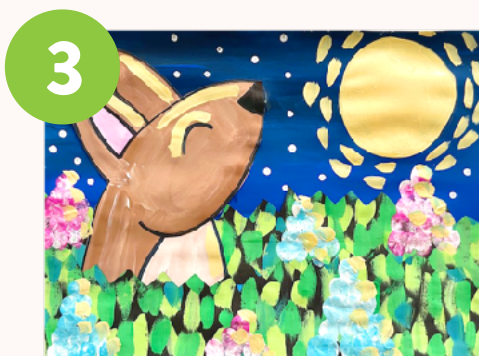
Use overlapping to create a background.



Use overlapping to create space. Identify a horizon line.



Use overlapping & create simple perspective with lines.



Use multiple layers to create space; here, near & far.



Create a background, foreground and middle ground.



Use one-point perspective from corner of page = 1 side.



Attempt realistic space from observation + atmospheric perspective.



Use one-point perspective from center of page = 2 sides.