



**Welcome Freshmen  
Class of 2027**

# WHO IS YOUR COUNSELOR ??????

- A - BR Ms. Canose
- BS-GN Ms Farrow
- GO - MAN Ms. Weinstein
- MAP- RI and ESOL Ms. Manhart
- RO - Z Mr. Boos
- Early College & Early Admin Ms. Persing
- IB Program Ms. Mason
- Social Work Services Ms. Gray

**How do I make an appointment?**

# WHAT IS GPA?

- A = 4.0
- B = 3.0
- C = 2.0
- D = 1.0
- F = 0 and class is repeated
  - Extra points for honors and AP/IB/DE

# GENERAL REQUIREMENTS FOR HIGH SCHOOL GRADUATION (4-YEARS, 26 CREDITS)

- 4 credits English
- 4 credits Math – must include Algebra I and Geometry
- 3 credits Science – sequence: Bio, Chem, Physics
- 3 credits Social Studies - W. History, US History, US Gov, Economics
- 1 additional Science OR Social Studies Elective Credit
- .5 credit Career Research & Decision Making (9<sup>th</sup> grade year)
- 1 credit Health Opportunities for Physical Education (HOPE)
- 1 credit performing fine art
- .5 credit Financial Literacy
- 8 credits electives
- Total 26 credits\*

\* Earn cumulative GPA of at least a 2.0

\* Rigorous Course requirement: 3 credits in rigorous courses (Honors, AP, or EFSC Dual Enrollment) OR 3 credits in one career technical education (CTE) program.

# GRADUATION REQUIREMENTS FOR ALL

Students must demonstrate proficiency on the **10<sup>th</sup> grade** test  
FOR READING.

FAST

**\*PROGRESS MONITORING ASSESSMENTS (READING)**

**(3 TIMES PER YEAR)**

BEST

- **ALGEBRA- GRADUATION**

EOC

- **US HISTORY, GEOMETRY, and BIOLOGY - 30%  
percent of your grade.**

# PERFORMING/FINE ARTS CREDIT

- Art (2D or 3D)
- Speech
- Career and Technical Education
- Music (Band, Orchestra, Chorus)
- Theatre, Musical Theatre, or Technical Theatre

**Note:** 2 years of ROTC = 1 credit HOPE & 1 credit Performing/Fine Arts

# **ACCELERATED PROGRAMS**

***(MEETS RIGOROUS COURSE REQUIREMENT)***

- \*AP PROGRAM
- \*DUAL ENROLLMENT/EARLY COLLEGE
- \*IB PROGRAM
  - DIPLOMA
  - CAREER

# **ACCELERATED PROGRAMS**

## ***(MEETS RIGOROUS COURSE REQUIREMENT)***

### **\*IB Career Programme**

- Must choose a career path (CTE)
  - Take as an elective each year for 3 years
- 2 IB courses & Personal/Professional Skills course
  - Take Junior & Senior year
  - 1 IB course each year



# **CAREER & TECHNICAL EDUCATION (CTE) PROGRAMS AT MEL HIGH**

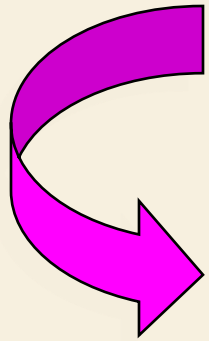
***(MUST COMPLETE 3 YEARS IN THE SAME PROGRAM)***

- Applied Engineering
- Building Construction
- Culinary Arts
- Cyber Security
- Digital Design
- International Business
- Emergency Medical Responder (HS Foundation, Anatomy & Physiology, EMR)
- Patient Care Technology (dual enrollment, senior year only, application required)
- AFJROTC

# PROMOTION STATUS

- **You must have 5 credits to be promoted to 10<sup>th</sup> grade.**
  - Semester grade of “D” or better = .5 credit
  - Algebra I, Geometry, US History, and Biology are considered yearlong courses. Credit earned is based on the final grade at the end of the year which includes the BEST/EOC as 30%. Final grade of “D” or better = 1 credit
- **11<sup>th</sup> – 11 credits, 2 English & 2 Math**
- **12<sup>th</sup> – 18 credits, 3 English & 3 Math**

# CAREER AND COLLEGE GOALS



- Career interests affect educational needs.
  - Do some Career Research
  - Think about your Personal Interests
- Where do you want to go *after* graduation?
  1. **University, Four Year College Program**
  2. **Community College**
    - 2 + 2 Program
    - Career Programs
  3. **Direct Employment or Military Enlistment**

# FLORIDA BRIGHT FUTURES SHOWS YOU THE MONEY \$\$\$\$

*Community service does not count for Bright Futures UNTIL a work plan is submitted and approved by Guidance.*

*\*subject to change*

***Have to complete 8<sup>th</sup> grade before hours can count.***

- **Florida Academic Scholar**
  - 3.5 weighted GPA
  - 16 credits of college preparatory academic courses
  - Best composite score of 1340 SAT or 29 ACT
  - 100 hours of volunteer community service or work hours or a combination
- **Florida Medallion Scholar**
  - 3.0 weighted GPA
  - 16 credits of college preparatory academic classes
  - Best composite score of 1210 SAT or 25 ACT
  - 75 hours volunteer community service or 100 work hours or a combination of 100 volunteer and paid work hours

# FLORIDA BRIGHT FUTURES SHOWS YOU THE MONEY \$\$\$\$

- **FLORIDA GOLD SEAL SCHOLAR**
  - 3.0 Weighted GPA
  - No Foreign Language requirement
  - Higher level math classes are not required
  - 3.5 GPA in 3 year Voc/Tech Program
  - SAT, ACT or CPT qualifying test scores
  - 30 hours volunteer community service or 100 work hours or a combination of 100 volunteer and paid work hours

# **ACTION PLAN FOR 9<sup>TH</sup> GRADE**

- **Get serious and organized about school work!!**
- **Keep track of all assignments and deadlines.**
- **Know high school graduation requirements.**
- **Learn about programs and classes.**
- **Choose high school courses carefully.**
- **Your college resume begins now.**
- **Think:**
  - **Where do you want to be in four years?**
  - **How will you get there?**
- **GET INVOLVED!**

# ULTIMATE GOAL:

MEL  
HIGH  
Class of  
2027



**WELCOME  
BULLDOGS!!**





# MR. LINDE – 9<sup>TH</sup> GRADE



# MS. PEREZ – 10<sup>TH</sup> GRADE



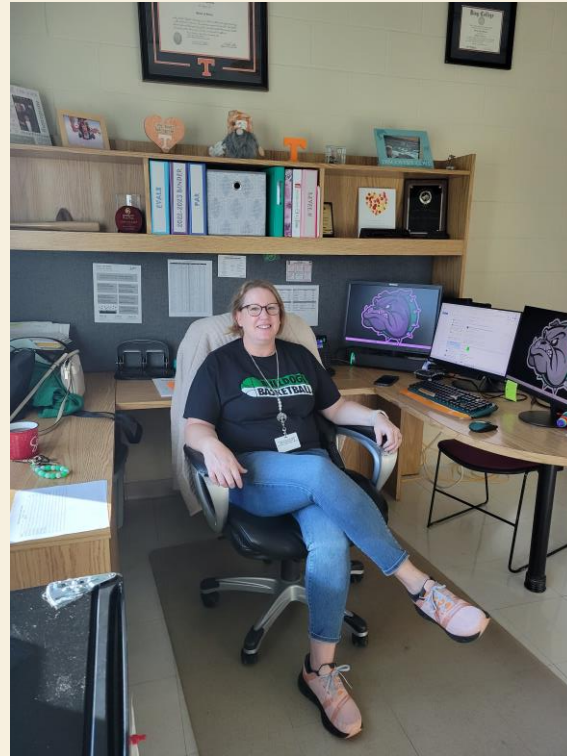
# MS. KILMER – 11<sup>TH</sup> & 12<sup>TH</sup> GRADE



# MR. MEEGAN – FACILITIES



# MS. WILLIAMS - CURRICULUM



# DR. KIRK - PRINCIPAL



# MR. RAYMOND – ATHLETIC DIRECTOR



# DRESS CODE – DO'S AND DON'TS

## Do's

Understand that you not only learn academics here, but also learn that there are different ways that you should act and dress according to where you are and what you wish to accomplish. There is a difference between very casual, semi-casual, and less casual ways of dressing and behavior.

Very Casual

Home /Beach

Semi -Casual

School

Less Casual

Job Interview/Work



# DRESS CODE – DO'S AND DON'TS

## Don'ts

### Head

- No hats indoors
- No hoodies up

### Upper Garments

- Undergarments showing
- Midriff (stomach) showing
- Tops (or dresses) that are strapless/backless/halter/transparent/tube
- Low-cut necklines

# DRESS CODE – DO'S AND DON'TS

## Don'ts

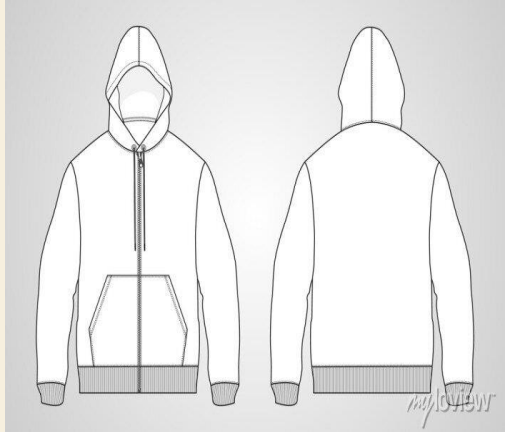
### Lower Garments

- Lowriding
- Immodest holes and/or rips
- Shorts that do not completely cover the buttocks
- See through/sheer leggings or yoga pants

### Accessories/Clothing Design

- Crude, vulgar, profane, violent, death-oriented, gang related, sexually suggestive, promoting alcohol, drugs or tobacco
- Connected piercings, dog collars, wallet chains, large metal hair picks

# SOME DON'TS



# NEW WCD BOARD POLICY!!!

Minor Wireless Communication Device Misuse	
1 <sup>st</sup> Offense	<ul style="list-style-type: none"><li>• A discipline referral submitted in Focus.</li><li>• Confiscation of WCD</li><li>• Parent/legal guardian contact is required.</li></ul>
2 <sup>nd</sup> Offense	<ul style="list-style-type: none"><li>• A discipline referral submitted in Focus.</li><li>• Confiscation of WCD</li><li>• Parent/legal guardian contact is required.</li><li>• Loss of cellphone privileges</li></ul>
3 <sup>rd</sup> Offense	<ul style="list-style-type: none"><li>• A discipline referral submitted in Focus.</li><li>• Confiscation of WCD</li><li>• Parent/Legal Guardian contact is required.</li><li>• Student may be assigned other corrective strategies according to the Code of Student Conduct.</li></ul>
Any violation beyond a 3 <sup>rd</sup> offense may result in an out of school suspension, up to a 10-day suspension pending possible placement in an alternative setting.	

WE CANNOT RETURN THE DEVICE TO A STUDENT, IT HAS TO BE A PARENT!!

# FILMING OTHERS ON CAMPUS

- Two day OSS
- 30 day revocation of cell phone privileges on campus.

## Posting Video/Audio on any Social Media

- Three day OSS
- Student not allowed to bring cell phone to school for rest of year.
- Automatic suspension if you are caught with any cell phone for the remainder of the year.

# BAD CHOICES/ NOT NEGOTIABLE

- Disrespect, Willful Disobedience, Bullying/Harassment – NEVER accepted here = severe consequences
- Classroom Disruption – Really? Why? You are HERE to learn, grow, and graduate. Period. If this is not your goal, you will not be allowed to interfere with the learning of other students.
- Fighting – NEVER accepted here = 3 Days Out – Minimum
- Vaping/Cigarettes/Other smoking – No, not allowed. Civil Citation = Court/Fines/Community Service/1 Day Out - Minimum
- CBD/THC – Will result in Expulsion Hearing/Could also result in Felony Charges
- Skipping – Consequences not only disciplinary, but can result in FDA = Off Graduation Track!

# DISCIPLINE OUTCOMES

ALL REFERRALS WILL RESULT IN A  
STUDENT CONFERENCE AND PARENT/CAREGIVER  
COMMUNICATION

## Dean's Detention

- Detentions will be held after school
- Detentions will be 60 minutes in length
- Students will be expected to bring school work or a book to read
  - No cell phone usage is allowed
- Failure to attend will result in an in-school suspension

# DISCIPLINE OUTCOMES

## In-School Suspension (ISS)

- You will spend the day in the in-school suspension room, including lunch
- You will have timed periods to work on assignments from your classes
- You will do a reflective writing assignment
- There is no talking, eating, sleeping or cell phone use
- Failure to follow rules will result in an immediate removal and out-of-school suspension and ***upon your return to school you will be returning to ISS***



# DISCIPLINE OUTCOMES

## Out-of-School Suspension

- You will not be allowed on any school board property, which includes any after-school activities for the duration of the suspension
- Receiving such suspension will result in your being on the No Go List which means you cannot attend Homecoming, Prom, Grad Bash, field trips, or any school functions
- Athletes will be removed from their team when they receive their 2<sup>nd</sup> suspension within their season (practice to post-season)

# ATTENDANCE

- 9 Days per semester
- Doctor, religious, and court absences do not count against your 9 days per semester.
- When absent, submit documentation to attendance office.
- Parent notes/phone calls are NOT excused absences.
- Absences are counted per period/ NOT by the day.
- ***Over 9 absences will result in a failure due to absence grade.***

# TARDY TO CLASS OR SCHOOL

**YES - IF YOU ARE TARDY TO SCHOOL,  
YOU ARE CONSIDERED TARDY TO 1<sup>ST</sup> PERIOD**

- If you are tardy to school, provide documentation to the attendance clerk
- Your teacher will handle the discipline for the first two tardy incidents
- Your third tardy will result in a discipline referral and a Dean's detention
- Continued tardy incidents will be viewed as willful disobedience
- Your parking permit may be REVOKED for excessive tardiness

# SPEAKOUT HOTLINE

- Why Call SpeakOut Hotline?
- SpeakOut Hotline wants every student to know - telling isn't 'snitching'. Telling is when you need to keep yourself or someone you know safe from threats, harmful behaviors or dangerous situations.
- To make a report, call 1-800-423-TIPS from anywhere, 24 hours a day, seven days a week. The call is free.
- You may also make a web-tip by clicking here now.
- Or text "SPEAKOUT" plus your tip information to CRIMES (274637).
- You will always stay 100% anonymous! No one will ask for your name or number. There is no caller I.D., no I.P. tracking, and no call recording. We only want the information that you have to provide so that we can help.
- Afraid to call SpeakOut Hotline? Think someone else will probably call? Stand up and stay anonymous!
- We need your help to improve your school and community. By calling, you can help stop a fight, stop a bully from torturing your classmate, or stop a gang from recruiting a fellow teen. If you have information about the following topics, please call.

# MINGA



- Digital ID – You won't need to carry your plastic ID card
- School updates – Events/Clubs/Athletics
- Teachers will be using this to send out messages to specific student groups
  
- DOWNLOAD THE APP
- SIGN IN WITH YOUR BPS SHARE ACCOUNT/GOOGLE

# WHAT DO WE EXPECT FROM YOU?

You show up, every day, ready to learn and ready to work

You respect your teachers, your peers, the staff, and yourself

Own your behavior

You understand that your goal is to graduate and be ready for  
the next phase of your life