



**Cambridge Assessment
International Education**

Cambridge International School

We are proud to be part of the world's largest international community of schools.

Rockledge Cambridge Program NEWSLETTER

October 2022

Why Cambridge?

Although the Cambridge program is taught in more than 160 countries around the world and has been tested internationally since 1864, Cambridge is considered a “new” academic curriculum in the United States. The relatively young age of the program in this country often leads parents and students to ask “Why Cambridge?” when they hear about it.

One of the most significant attributes of the Cambridge program is its focus on providing students with a challenging curriculum that encourages students to think about the world around them and their place in it. Our Cambridge courses require students to think critically, evaluate and analyze carefully, and reflect thoughtfully. But, as students in the program often point out, these characteristics don't mean that they can't have a life outside the classroom.

In order to give students the best opportunity to reach their highest level of academic achievement, the Cambridge program curriculum does not rely on rote memorization with lots of multiple choice testing. Instead, students demonstrate their knowledge through writing and hands-on activities like lab practicals and product-based assignments. Innovative thinking and solutions are expected in our program as we know that most problems have more than one answer.



And, as many of our current and former students will attest to, the potential to earn the AICE Diploma with a program that offers a wide variety of college-level courses in both academic and elective subjects is a huge incentive for being a part of the Cambridge program. The AICE Diploma, like the core curriculum of most colleges and universities, requires students to take AICE classes in a variety of subjects. Students who earn their AICE diploma leave RHS with a minimum of 21 college credits already earned and, for those who apply and complete their community service hours, the potential to have their tuition costs to a Florida public college or university fully covered by the Bright Futures Scholarship.

“Why Cambridge?” some ask. We reply, “Why Not Cambridge?”

Important Upcoming Dates

- **ACT Test** - October 22 & December 10
- **SAT Test** - November 5, December 3
- **FAFSA** (Free Application for Federal Student Aid) Application opens October 1
- **October 6 - FAFSA presentation** by FIT with Question and Answer Period - 6 p.m. at RHS

CAMBRIDGE NEED TO KNOW TERMINOLOGY



The Cambridge program is designed by and administered through Cambridge Assessment International Education in England, and as you might expect, there are some terms used within the program that are not as common in the United States. The Cambridge program consists of a one-year course of study which is called Advanced Subsidiary (AS) and a two-year course of study, known as the Advanced Level. Below are some of the words and phrases you might hear mentioned in relationship to the Cambridge program.

<p>AS-Level (Advanced Subsidiary Level)</p>	<p>An AS-Level class is a one-year college-level course. Students study the exam subject for one year and take the AS-Level exam at the end of the year. Passing AS-Level exam scores include a, b, c, d, and e, and each passed exam equates to 3 college credits. Passing an AS-Level exam earns students 1 point towards the AICE Diploma.</p>
<p>A-Level (Advanced Level)</p>	<p>An A-Level class is a two-year college-level course. Students typically study the exam subject for two years and take both AS-Level and A-Level exams at the end of the year. (At RHS, we offer some courses that allow students to study both the AS-Level and A-Level during the same school year.) A student must pass the subject's AS-Level exam to earn A-Level credit. Passing A-Level exam scores include A*, A, B, C, D, and E, and each passed A-Level exam earns students an additional 3 college credits for a total of 6 when added to the already earned AS-Level credit. Passing an AS-Level and A-Level exam in a subject earns students 2 points towards the AICE Diploma.</p>
<p>Access Arrangements</p>	<p>Accommodations offered to students on testing with 504 or IEP plans. These accommodations must be requested each year. Students will receive an accommodations form from Mrs. Matthews at the start of second semester to have signed.</p>
<p>IGCSE (International General Certificate of Secondary Education)</p>	<p>All RHS Pre-AICE classes are IGCSE courses. The state of Florida uses the term Pre-AICE instead of IGCSE. Pre-AICE subjects provide college preparatory coursework to students and offer a strong foundation for students who are going to later take AS-Level or A-Level courses.</p>
<p>Marks</p>	<p>The number of points a question on an exam is worth.</p>
<p>Mark scheme</p>	<p>The rubric which details how to award points on an exam. It indicates the number of points each question and acceptable answers or criteria for awarding points.</p>

THE SAT vs THE ACT - WHAT YOU NEED TO KNOW



As you begin the college admissions process, admissions tests like the SAT and ACT are one of the aspects you might dread the most. Admissions tests evaluate the reading, writing, and math skills you'll need in college. Colleges use these tests to help them make admissions decisions and sometimes even class placement decisions. The weight each admissions office places on these admissions tests varies, but most four-year universities and colleges will require students to submit at least one SAT or ACT test score.

With two college admissions tests available for you to consider, you must decide whether you will take one of these tests or both. While colleges do not typically prefer one test over the other, you will sometimes find that you like (and do better on) one test over the other. The SAT and ACT generally cover the same topics, but there are some differences between the two that you need to know before you decide which test to take.

	SAT	ACT
Test Sections	Reading, Language & Writing, and Math	English, Math, Reading, Science Reasoning, and Essay (Optional)
Length	3 hours - 154 questions	2 hours, 55 minutes - 215 questions (faster-paced but questions are more direct) 3 hours, 40 minutes (with essay)
Reading	5 reading passages	4 reading passages
Science	None	1 science section tests your critical thinking skills (not specific science knowledge)
Math	Arithmetic & Algebra I & II Geometry, Trigonometry, and Data Analysis	Arithmetic & Algebra I & II Geometry, Trigonometry, and Probability & Statistics
Calculator Policy	Some math questions don't allow you to use a calculator	You can use a calculator on all math questions
Essay	None	Optional. Essay will test how well you evaluate and analyze complex issues
How It's Scored	Scored on a scale of 400-1600	Scored on a scale of 1-36



TIPS FOR PREPARING FOR THE SAT OR ACT

1. **KNOW WHAT TO EXPECT.** **KNOW** the test structure, instructions, and types of questions you'll be asked.
2. **START EARLY.** **STUDY** the material that might appear on the test. If you have a busy schedule, you may not have a regularly scheduled time to study. The earlier you begin studying for the test, the more time you will have to prepare.
3. **PRACTICE EFFECTIVELY.**
 - a. **COMMIT** to specific times to study and create an effective study environment. Select a quiet but comfortable spot.
 - b. **USE** available practice tests. You don't have to complete an entire practice test each time you study; instead, you can take just the reading section or just the math section.
 - c. **ANALYZE** your results. Don't just check to see if you got the answers right or wrong. Look at the explanation of the answers to make sure you understand why you chose the incorrect answer and make a list of the types of questions you are getting wrong. Then, drill on those particular skills and sections.
 - d. **PRACTICE** your timing. Set a timer and see how you perform when you complete a test section in the same amount of time you'll have on test day.
4. **USE AVAILABLE ONLINE RESOURCES.** There are many online resources available to help you prepare for the SAT and ACT. See the next page for more details on what is available.
5. **BOOST YOUR VOCABULARY.** While the SAT and ACT do not specifically test you on vocabulary words and definitions, expanding your vocabulary can help you making sure you understand the context of the given reading passages on the exams.
6. **LEARN TEST TAKING TIPS FOR YOUR CHOSEN TEST.** Each test has some specific test-taking strategies that you will want to learn before you take the test. For example, there is no penalty on either test for wrong answers, so you want to answer EVERY question, even if you have to guess.

KHAN ACADEMY

- **Free:** Diagnostic quizzes will help create individualized course of study
- **Free:** Info on each test section
- **Free:** Tips & Strategies Index

Number2.com

- **Online Test Preparation Courses (\$)**
- **Free:** Articles on SAT/ACT sections and other topics related to each test

SAT & ACT ONLINE STUDY RESOURCES

KAPLAN TEST PREP

- **Online Test Preparation Courses (\$)**
- **Free:** On Demand Practice Test with detailed report on your results
- **Free:** Kaplan's 20-minute workout for SAT
- **Free:** ACT Pop Quiz

VARSITY TUTOR

- **Free:** SAT diagnostic tests
- **Free:** SAT Practice tests that are timed & provide explanations
- **Connect with an ACT or SAT tutor (\$)**

TEST GEEK

- **Free:** Subject video tutorials
- **Free:** Strategy articles
- **Free:** Practice tests with explanations
- **Online Tutoring (\$)**

THE CRITICAL READER

- **Links to study guides for purchase**
- **Free:** Complete SAT & ACT grammar rules study guide
- **Free:** Articles related to SAT & ACT
- **Free:** Online quizzes

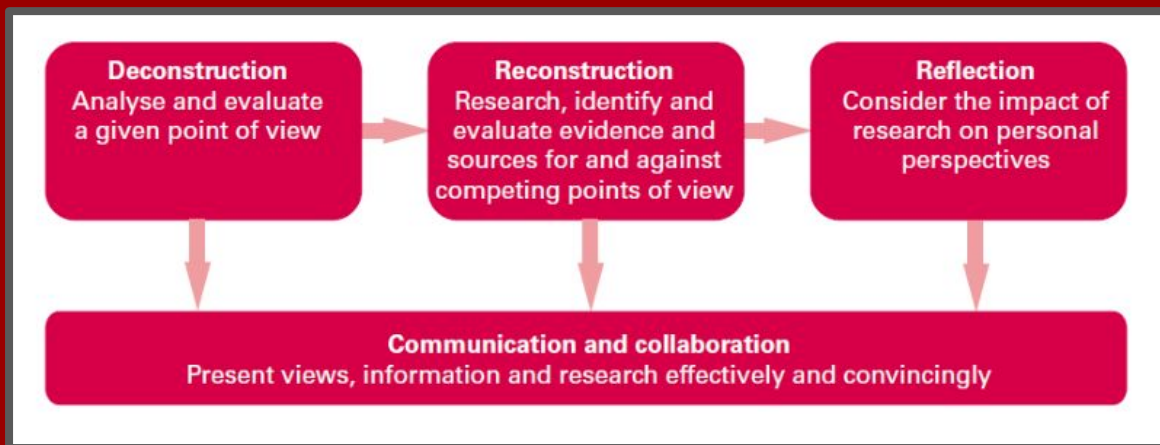
ERIKTHERED.COM - Free: SAT Math Guides, Practice Quizzes, Must Know Facts & Formulas

What Is Cambridge Global Perspectives?

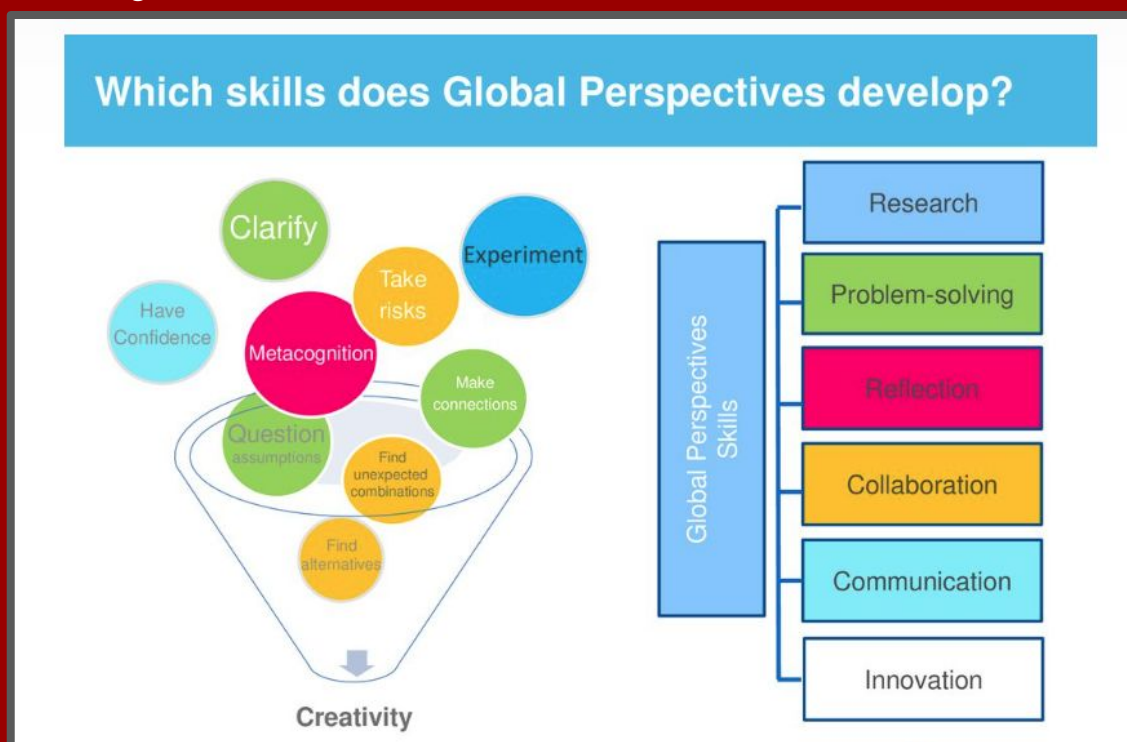


Cambridge Global Perspectives is a unique course that helps students develop transferable skills, including critical thinking, research and collaboration. This innovative and stimulating skills-based class places academic study in a practical, real-world context. It gives students the opportunity to develop the skills that they need to be successful at school and university as well as in their future careers.

The course taps into the way today's students enjoy learning, including group work, seminars, projects and research. Students will learn to properly analyze and evaluate arguments with differing perspectives. The emphasis of the course is on developing students' ability to think critically about a range of global issues where there is always more than one point of view.



The students learn to maturely discuss topics through evaluation, reflection, analysis, research, collaboration and communication. The development of these skills prepares learners for positive engagement with our rapidly changing world. Students broaden their outlook through the critical analysis of and reflection on issues of global significance. Global Perspectives, in essence, is preparing our students for jobs that may not even exist yet. The skills gained help students to meet the demands of the 21st Century learning, preparing them for the transition to higher education and the world of work.



Rockledge High Service Organizations & Clubs

Extracurricular activities and high school clubs have a lot to offer. Whether you join, create, or lead one, participating in an extracurricular activity will not only enhance your school experience but also help prepare you for life and your future endeavors!

Joining a service club can be particularly beneficial as these organizations offer many opportunities to volunteer in the community and bring awareness to the needs of those living around us. Activities through a service club can count towards a student's required Bright Future community service hours and be discussed on scholarship applications. Additionally, many of the RHS service clubs are linked to their adult civic organization counterparts, allowing you to network and build connections that might help you in your future endeavours.

Other Reasons To Join a Service Club or Organization

Make New Friends

Learn More About Yourself

Develop New Skills

College Admissions

Give Back to the Community

Develop Leadership Skills

Build Your Resume

Learn How to Work With a Team

Have Fun

Beta Club

The Beta Club is an honor organization that recognizes outstanding academic achievement, promotes strong moral character and social responsibility, encourages service to others, fosters leadership skills, and provides settings for you to develop strong interpersonal skills. The club meets once a month and stays connected through Google Classroom. There are four service projects per year that the club members run from start to finish and earn hours for Bright Futures. College scholarships are available through the National organization. Membership requires a 3.1 GPA. There is a one time \$20.00 membership fee. Interested students should contact Mrs. Tighe in Portable 1.

Delta Phi

Delta Phi is a social organization based on 3 pillars: Scholarship, Community Service, and Fellowship. We have a minimum GPA of a 2.5 for membership, and a behavior component, no member can receive more than one referral within a semester. Last year we helped paint the home of an elderly woman in the city of Rockledge, and we sponsored a county wide slam dunk competition, currently we have a few students who volunteered to help tutor students at an after school tutorial session at a local church. Interested students should see Mrs. Williams in room 12-201

Interact Club

The Interact Club is a community service club that is supported by the Rockledge Rotary. Any student can join, the dues are \$10.00. Interact members earn community service hours through volunteer work. The club has an annual Dictionary Day where members deliver and introduce dictionaries to local 3rd grade classes. Club members also organize canned food drives, participate in Toys for Tots, help with beach cleanups and organize community clean-ups. Students can get small scholarships as well, and their service hours count towards hours for Bright Futures. Interact Club currently meets every 1st and 3rd Friday in Mr. Kuhblank's room 34-112 at 8:15 am.

Key Club

Key Club is a service organization run mostly by students. GPA requirement is 2.25, must have a good standing with teachers and administrators. They participate in both school volunteer activities as well as within the community. Membership runs throughout the school year. When filling out the membership application, list ideas you want to address for the school and community. Interested students should contact Mrs. Scarborough in the gym or room 09-914.

Lady Raiders League

Club Purpose: Promote civic engagement and community outreach for our female students. Develop a sense of belonging and responsibility within Rockledge and surrounding communities. Empower Rockledge High female students to serve and collaborate in the community in order to develop connections and value within the area.

Club Meeting Schedule: Monthly service projects

Club Goals: Build personal values through community service projects

Interested students should contact Mrs. Feronti in the front office.

Mu Alpha Theta

Mu Alpha Theta is the National High School and Two-Year College Math Honor Society dedicated to inspiring a keen interest in mathematics, developing strong scholarship in the subject, and promoting the enjoyment of mathematics in high school and college students. Students who are members of this organization get the opportunity to obtain community service hours by tutoring their peers in a variety of courses from elementary school math through calculus or AICE math. In addition to receiving community service hours, Mu Alpha Theta looks great on any college or scholarship application. Students who are interested in membership should see Mrs. Hall in room 15-206.

- Eligibility Requirements: Students should be currently enrolled in Algebra 2 or higher and have a 3.14 GPA in their math courses. Students are required to complete 15 hours of tutoring each semester in order to keep their membership in good standing.
- Timeline: The first meeting was held in August, and December 16th is the deadline for all members to have their 15 tutoring hours completed for fall semester. The deadline to have all hours completed for the spring semester will be in May.
- Tips to remember when filling out an application: Students will share their contact information including email and phone number to be added to the Mu Alpha Theta tutoring list, which is shared with teachers and guidance counselors. Students may also list their preference of which math courses they feel most comfortable tutoring.

P.A.S.S. Club

P.A.S.S. Club (Peer Assisted Study Session Club) is a club that offers tutoring before school on all school subjects; it is also the first club on campus to ever offer SAT/PSAT preparation to all Rockledge High students. All tutors are students at the school who are proficient in one or more core subjects and show a willingness to help their peers succeed. P.A.S.S. Club tutors are awarded community service hours for being present to tutor regardless if anyone comes to receive academic assistance. The only way to receive tutoring is by signing up to become a member; however, there are no requirements to become a member or to remain as a member. Once someone signs up, they have unlimited access to both general tutoring and standardized test preparation. Interested students should contact Mrs. Krajewski in room 34-312.

College Reps are coming to Rockledge High School



**Register now to get valuable
information regarding your
college choices.**

Upcoming dates and times can be viewed at the link below or
by scanning the QR code.

<https://bit.ly/3qXHfQM>

Whether you are attending a college fair, meeting with a college recruiter on the RHS campus, or visiting a college campus in person, you want to make sure you talk with and ask questions of the college's representative. Meeting with a college representative is an opportunity to find out more about the college's academics, student life, financial aid, scholarship opportunities, and more. The questions you ask of a college representative should help you determine if you have a genuine interest in the college and all it has to offer you.

As you consider what questions to ask, think about what is most relevant to you and what will help you decide if the college is the right fit for you. Avoid asking questions that can easily be found on the college's website or brochure. Instead, ask questions that will give you a full picture of life at that college. If you plan to meet with representatives from many colleges, consider asking each the same questions so you can compare what each college offers you. College representatives can be a great resource in your college search, so be prepared to use your time with them wisely.

CAMBRIDGE TEACHER PROFILE

Mr. Aaron LeBlanc

**AICE Environmental
Management**



A proud Florida State University graduate, Mr. Leblanc has been teaching for 10 years, spending his last 5 here at RHS. With a bachelor's degree in Secondary Education and Biology, Mr. Leblanc tries to make his classroom as student-centered as possible. As he says, "The less I am up in front of the room talking, the more my students are engaged in the content." To keep his students engaged, Mr. Leblanc focuses on making his lessons relevant for students, helping them to see the real-world applications of what they are learning.

Within the Cambridge program, Mr. Leblanc teaches AICE Environmental Management, a course that offers a unique blending of science and civics. The material covered in the course offers a global perspective and understanding about the importance of conserving our environmental resources. Since Mr. Leblanc wants his classroom to feel as close to a real lab space as possible, he allows his students to lead their investigations into the topics being covered. When handling the civics portion of the class, Mr. Leblanc structures the class in a way that allows students to formulate their own opinions through independent research. Students then share their findings through discussions and debates. In a recent activity, students were asked to research various methods of water conservation, create a plan for how to best solve the nation's water crisis, and then present their plans in a mock-session of Congress.

As the RHS Science Research teacher, Mr. Leblanc also works with students who complete a science project and present their findings at the county, and for some, state science fairs. In the past 5 years, the RHS Science Research program has earned over \$1 million in scholarships.

After school, you will usually find Mr. Leblanc working with students in one of the many extra-curricular clubs he sponsors including the Chess Club, the RHS Academic team, and the E-sports team. In his classroom, whether you visit during or after school hours, you will find Mr. Leblanc's students actively engaged - learning, creating, and yes, sometimes yelling in excitement.



CAMBRIDGE STUDENT SHOWCASE

9TH GRADE STUDENT

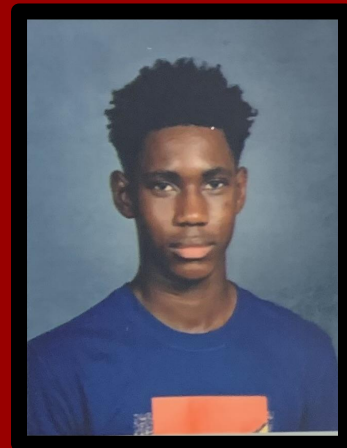
Jeremiah Perez



It was an easy decision to come to the Rockledge High School after I saw the programs that were offered here to push us as students. Before that I was torn between another high school and Rockledge High school, but once I saw how the teachers treated the students like they wanted us to be here, I was sold. For my first year I really wanted to challenge myself, so I chose to do AICE General Paper and other Pre-AICE classes. Also seeing the fact that Rockledge was so invested in getting people of all backgrounds was super enticing and made me feel welcome here. As for my favorite class it would probably be either International Business or the theatre program here that is amazing. I truly love Mrs. Rose and I have not met a theater teacher like her before, she is so welcoming to all her students no matter their background and really gets all the students involved. I partake many extracurricular activities. I have joined the Spanish Club, the Drama Club and the SGA (Student Government Association). I am the acting Freshman Class President. I also represent the Freshman Class in the Student Rockledge City Council. Outside of school I have joined McNair in their Chick-Fil-A Leadership Academy which I plan to get established at RHS next year. So overall I do not have any regrets with my decision in coming to Rockledge High School at all.

10TH GRADE STUDENT

Preston Odom

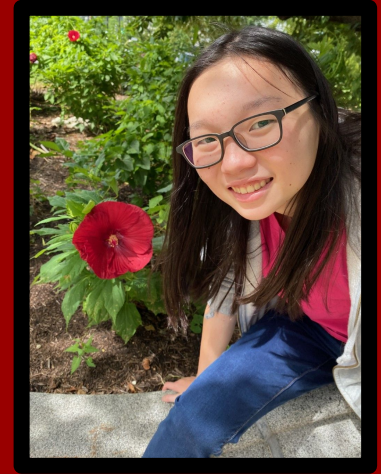


I decided to join the program since it would challenge me academically with rigorous courses; preparing me for college. All my AICE teachers have been phenomenal and have prepared me for the exams and future higher level classes. My favorite Cambridge class is Global Perspectives, because it shines light on issues around the world and requires you to think more broadly. My favorite class at Rockledge in general is Spanish, since it is nice to learn other cultures and speak a new language. I'm in the key club and an extracurricular I partake in is golf with EFSC. I also volunteer at my church.

CAMBRIDGE STUDENT SHOWCASE

11TH GRADE STUDENT

Kyla Woo



I chose to come to Cambridge for the academic challenge and the college credits-plus to help my college application stand out. My favorite class is AICE Marine Biology (which I took last year) because of the content and the all of the hands-on labs we did. I am on the school robotics team (The Pink Team), academic team, and play piano. In my extra time I like to read novels and spend time with my friends and family.

12TH GRADE STUDENT

Stephen Gentile



I chose the Cambridge Program because I wanted to expose myself to a curriculum that would best prepare me as a future academic. I truly believe that this program is structured so that students can make their scholarly aspirations a reality. For example, all the Cambridge teachers I've had at Rockledge High have been invaluable resources to me because they are always willing to lend assistance to any student who needs it. My favorite experience with the Cambridge Program was my A-Level Math course with Mrs. Krajewski. Every student would lend one another assistance throughout the week and Mrs. Krajewski would work tirelessly before, during, and after school to ensure that her students would certainly succeed. If it were not for the Cambridge Program, I wouldn't have ever met such an amazing group of people and such an amazing teacher who helped me develop my mathematical skills far beyond my own expectations.

I am incredibly fortunate to have had the opportunity to utilize such an amazing program and I would highly recommend the Cambridge Program to anyone striving for academic excellence.

DID YOU KNOW?



Lord Byron, the famous Romantic poet, is said to have kept a bear while he was a student at Trinity College of Cambridge University in the 1800s. The story goes that Byron purchased this unwieldy pet from Stourbridge Fair, which ran each year in Cambridge and was the largest medieval fair in Europe at its peak. He supposedly decided upon the bear as his pet in defiance of the rule that banned students from keeping pet dogs while living at the college. He argued that as bears weren't specifically mentioned in their statutes the college had no legal grounds for complaint. Byron won the argument against the college and the bear stayed with him in his lodgings. He would walk the bear around the grounds of Trinity on a chain like a dog, and delighted in the reactions he got from passers-by.

TEST YOUR AICE KNOWLEDGE

The following questions appeared on the AICE Business Paper 1 exam in June 2022. Can you figure out the answers?

- (a) Define the term 'Computer Aided Manufacture' (CAM).
[worth 2 marks]
- (b) Explain two disadvantages to a business of introducing CAM.
[worth 3 marks]

Answers:

- a. The use of technology/software/robots/machines (1 mark) to create/produce/manufacture/improve products and/or production process (1 mark)
- b. Possible answers - 2 different answers needed for full credit
 - i. The cost of the initial software and equipment can be extremely high
 - ii. High maintenance costs
 - iii. Likelihood of breakdowns disrupting production Initial design fault in CAM could lead to waste in the manufacturing process
 - iv. The wage costs of highly skilled employees are likely to be higher than those previously employed therefore increasing the labour costs
 - v. The systems often require highly skilled workers who require training
 - vi. The hiring of highly skilled employees can be difficult if the specific technology is very new to an industry
 - vii. The current workforce might not possess the necessary skills causing them to be made redundant leading to redundancy payments
 - viii. An increase in the use of computers and robots might cause an increase in local unemployment leading to negative feelings toward the business