



# PARENT RESOURCE GUIDE

2019-20



Brevard  
Public  
Schools



Whether you need Financing for a Home or Auto, the convenience of tons of FREE eServices, a FREE Checking Plus Account, Youth Accounts, or you just want to Start a Savings Habit, CCU has you covered.

Plus, don't forget the exclusive High School Mascot Debit Cards!



Download the Mobile App from the App Store or Google Play today.



**Community**  
credit union

FLORIDA

[ccuFlorida.org](http://ccuFlorida.org) • 321.690.2328

Palm Bay • Melbourne • Indian Harbour Beach • Viera | Rockledge • Port St. John • Titusville • One Awesome eBranch

Membership share account with a one-time fee of \$5 is required. Membership is available to Brevard, Orange, Osceola, Indian River, Volusia, and Polk County residents. Federally insured by NCUA. Equal Housing Opportunity.

# Brilliant Smiles Orthodontics

ROMIA C. GOFF, DMD, CAGS

Proudly serving Brevard County in five convenient locations:

- Palm Bay
- Melbourne/Suntree
- Merritt Island
- Satellite Beach
- Titusville

Bring this Planner to any location for these offers

## COMPLIMENTARY Examination

Includes: Panoramic and Cephalometric X-Rays. Diagnosis and Discussion of Treatment Plan.

Up To **\$500** OFF

Braces, Invisalign & Invisalign Teen

Discount applies to comprehensive treatment. Valid for 30 days from the initial visit.



BRACES FOR CHILDREN



BRACES FOR TEENS



BRACES FOR ADULTS



INVISALIGN & INVISALIGN TEEN

Call today 321-779-0000  
[www.brilliantsmilesorthodontics.com](http://www.brilliantsmilesorthodontics.com)



American Association of Orthodontists



Brilliant Smiles is a Proud Supporter of



"None of these materials are sponsored by nor endorsed by the District, its agents, or its employees. The views and information contained in these materials are not an expression of the opinion, belief, or policy of the Board, the District, and/or this school."

# Brevard Public Schools

## District Headquarters Educational Services Facility

2700 Judge Fran Jamieson Way  
Viera, FL 32940  
(321) 633-1000

## BPS Customer Service Center

(321) 633-1000, ext. 11500

## BPS website

[www.brevardschools.org](http://www.brevardschools.org)

## Stay connected



Facebook

<https://www.facebook.com/BrevardPublicSchools/>



Twitter

<https://twitter.com/BrevardSchools>



YouTube

YouTube

<https://www.youtube.com/BrevardSchools>

Download our free “BPS Mobile” app on Apple iTunes  
and Google Play stores



Google Play

All information current as of October 24, 2019 and is subject to change.  
Please contact your school or visit [www.brevardschools.org](http://www.brevardschools.org) for the  
most current information. This annual publication is created and  
maintained by Government and Community Relations.



# Table of Contents

Welcome .....	4
Who We Are .....	4
Vision .....	5
Mission .....	5
Core Beliefs .....	5
School Board Members/Superintendent .....	6
District Resources .....	7
2019-20 Calendar .....	8-10
School Enrollment Information .....	11-12
Immunizations .....	13
Mental Health Framework .....	13
Students-in-Transition .....	14
Exceptional Students .....	14
Bus Transportation .....	14
Head Start Program .....	15
2019-20 Testing Calendar .....	16-17
Voluntary Prekindergarten Program .....	18
Elementary Programs .....	19-22
District Map .....	24-25
High School Graduation Programs .....	27
Acceleration Programs & Advanced Coursework .....	28
Career & Technical Education .....	29
Virtual Learning .....	30
Graduation Requirements .....	31-32
What High School Families Need to Know .....	33-34
The Brevard Schools Foundation .....	35
Volunteering with BPS .....	35
Parent Leadership Team .....	35
Family Engagement .....	36
Food & Nutrition Services .....	36
Directory Opt-out .....	39
ESOL .....	40-41
Parents' Information Rights .....	42
Title I .....	42
Did You Know? .....	43-44
Questions & Concerns .....	46

**play melbourne**  
parks & recreation

**Get Out and Play**

**play melbourne**  
parks & recreation

**Check Out Our Activity Guide!**

PlayMelbourneFL.org  
321.608.7400

Yellow, Green, Blue, Red color swatches.

# Welcome to Brevard Public Schools!

An “A” district, Brevard Public Schools (BPS) is committed to “serving every student with excellence as the standard.” The district strives to provide students with the highest-quality education in a safe, supportive environment.

BPS students are immersed in challenging and varied curriculum. Students can choose from a wide range of learning opportunities including Career and Technical Education (CTE) programs, dual-enrollment courses and choice schools focusing on science, technology, engineering, arts and math.

The district’s top priority remains the safety and well-being of our students. Every school is served by a team which includes law enforcement and mental-health experts, and all campuses are now safeguarded with a single, secure point of access. Furthermore, the district’s mental health plan provides direct access to a range of mental health supports for students and families and promotes a positive school climate.

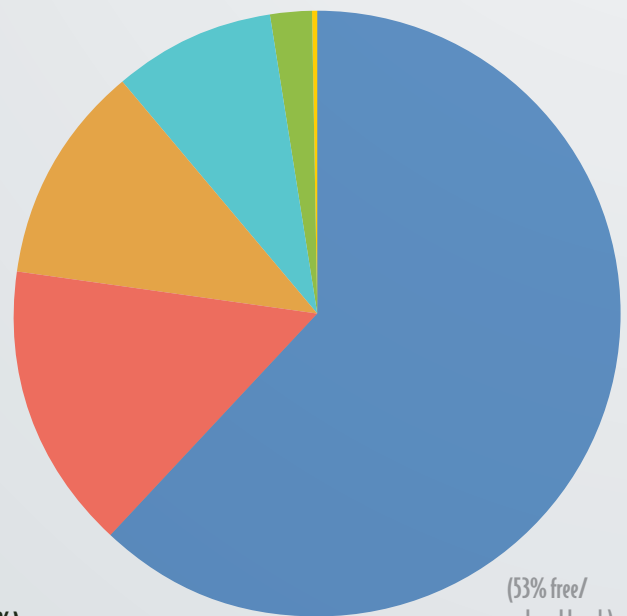
To learn more about Brevard Public Schools and parent involvement opportunities, you are encouraged to visit the BPS website at [www.brevardschools.org](http://www.brevardschools.org) and to contact your school’s administration.

## What makes us who we are?

With 84 schools, 10 specialty centers and 12 charter schools, Brevard Public Schools is the 48th largest district in the United States and the 11th largest of the 67 districts in the state of Florida. In 2018-2019, BPS increased its state ranking from 19 to 14 and today, ranks number one in the state when compared to other districts of the same size or larger. BPS was designated a high performing school district by the Florida Department of Education.

As the largest employer in Brevard County, BPS employs approximately 9,300 staff members who serve more than 70,000 students annually. More than half of BPS teachers have more than 10 years of experience.

BPS is committed to serving the community and enhancing students’ lives by delivering the highest quality education in a culture of dedication, collaboration and learning.



### STUDENT DEMOGRAPHICS

- White (61.70%)
- Black (15.26%)
- Hispanic (11.47%)
- Multi-Racial (8.7%)
- Asian/Pacific Islands (2.18%)
- American Indian/Alaska Native (0.30%)

### ACADEMICS:

- Graduation rate increased to 88.1% in 2018; a 2.1% increase in all subgroups.
- Ranks number one in the state among large districts for scores in English Language Arts (grades 6-10).
- AP students outperformed the state in 2018 in algebra, geometry, history and civics.
- 434 AA degrees were awarded to BPS dual enrollment students, saving families more than \$4 million.
- Forty-percent (40%) of BPS graduates earned industry certifications in Career and Technical Education (CTE) and STEM courses, the second highest in the state.
- More than 1,350 students earned Bright Futures Scholarships.



# VISION

**Brevard Public Schools will serve its community and enhance students' lives by delivering the highest quality education in a culture of dedication, collaboration and learning.**

# MISSION

**To serve every student with excellence as the standard.**

## CORE BELIEFS

- We must have a passionate commitment to high standards and student success.
- We must have a professional teaching culture marked by shared purpose, collaboration, innovative spirit and continual learning.
- We must revere data that provides feedback to students, inform programmatic and instructional decisions, and support focused intervention efforts.
- We must build relationships among adults and students - anchored in caring and trust and fueled by the mission to student success.
- We must commit to a relentless pursuit of teaching methodologies that foster student engagement, critical thinking, self-efficacy and content mastery.
- We must let compassion, conviction, and intense dedication to the mission of teaching and learning stand as the trademark of our work.
- We must have a zero tolerance for destructive negativism.
- We must constantly connect people to the nobility of our mission.



# Brevard County School Board



**District 1**

## **Misty Belford**

Mobile: (321) 591-9387

Office: (321) 633-1000 ext. 11412

[haggard-belford.misty@brevardschools.org](mailto:haggard-belford.misty@brevardschools.org)

### **Schools Represented:**

Apollo Elem. | Astronaut High | Atlantis Elem.  
| Challenger 7 Elem. | Coquina Elem. | Enterprise  
Elem. | Fairglen Elem. | Imperial Estates Elem.  
| Jackson Middle | Madison Middle | Mims Elem.  
| Oak Park Elem. | Pinewood Elem. | Riverview  
Elem. | Space Coast Jr./Sr. High | Titusville High



**District 2**

## **Cheryl McDougall**

Mobile: (321) 987-6382

Office: (321) 633-1000 ext. 11412

[mcdougall.cheryl@brevardschools.org](mailto:mcdougall.cheryl@brevardschools.org)

### **Schools Represented:**

Andersen, Hans Christian Elem. | Audubon Elem. |  
Cambridge Elem. | Cape View Elem. | Carroll, Lewis  
Elem. | Cocoa Beach Jr./Sr. High | Cocoa High |  
Edgewood Jr./Sr. High | Endeavour Elem. | Freedom  
7 Elem. | Golfview Elem. | Jefferson, Thomas Middle  
| McNair, Ronald Middle | Merritt Island High | MILA  
Elem. | Roosevelt, Theodore Elem. | Saturn Elem. |  
Stevenson, Robert L. Elem. | Tropical Elem.



**District 3**

## **Tina Descovich**

### **School Board Chairman**

Mobile: (321) 848-5478

Office: (321) 633-1000 ext. 11412

[descovich.tina@brevardschools.org](mailto:descovich.tina@brevardschools.org)

### **Schools Represented:**

Delaura Middle | Gemini Elem. | Holland,  
Spessard Elem. | Hoover, Herbert C., Middle |  
Indialantic Elem. | Ocean Breeze Elem. | Palm  
Bay Elem. | Palm Bay High | Port Malabar Elem.  
| Riviera Elem. | Satellite High | Sea Park Elem.  
| Stone Middle | Surfside Elem. | West Shore  
Jr./Sr. High



**District 4**

## **Matt Susin**

### **School Board Vice Chairman**

Mobile: (321) 684-9735

Office: 633-1000 ext. 11412

[susin.matthew@brevardschools.org](mailto:susin.matthew@brevardschools.org)

### **Schools Represented:**

Allen, Roy Elem. | Creel, Dr. W.J. Elem. | Croton Elem.  
| Eau Gallie High | Harbor City Elem. | Johnson, L.B.  
Middle | Kennedy, John F. Middle | Longleaf Elem.  
| Manatee Elem. | Quest Elem. | Rockledge High |  
Sabal Elem. | Sherwood Elem. | Suntree Elem. | Viera  
High | Williams, Ralph M. Jr. Elem.



**District 5**

## **Katy Campbell**

Mobile: (321) 271-9946

Office: (321) 633-1000 ext. 11412

[campbell.katy@brevardschools.org](mailto:campbell.katy@brevardschools.org)

### **Schools Represented:**

Bayside High | Central Middle | Columbia Elem. |  
Discovery Elem. | Heritage High | Jupiter Elem. |  
Lockmar Elem. | McAuliffe Elem. | Meadowlane  
Intermediate | Meadowlane Primary | Melbourne  
High | Southwest Middle | Sunrise Elem. |  
Turner, John F. Elem. | University Park Elem. |  
West Melbourne Elem. | Westside Elem.



## **Superintendent of Schools**

Mark Mullins, Ed.D.

(321) 633-1000, ext. 11401

[mullins.mark@brevardschools.org](mailto:mullins.mark@brevardschools.org)



# District Resources

Please dial (321) 633-1000 then the desired extension below unless noted otherwise.

ADULT EDUCATION .....	633-3660
BREVARD SCHOOLS FOUNDATION .....	11756
CAREER AND TECHNICAL EDUCATION .....	11380
CHILD FIND .....	11552
CURRICULUM AND INSTRUCTION SECONDARY .....	11300
ELEMENTARY .....	11411
CUSTOMER SERVICE .....	11500
DISTRICT COMMUNICATIONS .....	11796
DISTRICT SECURITY/ FINGERPRINTING .....	11233
EARLY CHILDHOOD EDUCATION .....	11340
ELEMENTARY PROGRAMS .....	11330
ENGLISH FOR SPEAKERS OF OTHER LANGUAGES (ESOL) .....	11411
ETHICS HOTLINE .....	11170
EXCEPTIONAL EDUCATION .....	11520
FACILITY USAGE .....	11411
FLORIDA DEPARTMENT OF EDUCATION .....	(850) 245-0505
FLORIDA DIAGNOSTIC & LEARNING RESOURCES SYSTEMS (FDLRS) .....	11540
FOOD & NUTRITION .....	11690
FREE & REDUCED LUNCH .....	11642
GENERAL EDUCATION DIPLOMA (GED) .....	633-3660
GIFTED EDUCATION (ELEMENTARY) .....	11375
GIFTED EDUCATION .....	11322
HEAD START .....	617-7786
HOME EDUCATION .....	11528
MEDIA REQUESTS .....	11796
MIDDLE SCHOOL PROGRAMS .....	11583
OPEN ENROLLMENT .....	11395
PARENT ENGAGEMENT .....	11389
PUBLIC RECORDS REQUESTS .....	11453
SCHOOL AGE CHILD CARE .....	11357
SECONDARY PROGRAMS .....	633-3660
STUDENTS AT RISK .....	11567
STUDENT SERVICES .....	11270
TAKE STOCK IN CHILDREN .....	11415
TESTING & ACCOUNTABILITY .....	11370
TITLE I .....	11350
TRANSCRIPTS .....	11777
TRANSPORTATION NORTH .....	269-2055
TRANSPORTATION CENTRAL .....	633-3680
TRANSPORTATION MID-SOUTH .....	242-6497
TRANSPORTATION SOUTH .....	727-2070
VIRTUAL SCHOOL .....	633-3660
VISION/HEARING TESTING .....	11552
VOLUNTEERING .....	11233
WHAT SCHOOL DOES MY CHILD ATTEND .....	11500

# 2019-20 Calendar

	DATE	DAY	
<b>AUGUST</b>	2	FRI	TEACHERS REPORT PREPLANNING
	5	MON	PREPLANNING
	6	TUES	PROFESSIONAL DEVELOPMENT
	7-9	WED-FRI	PRE-PLANNING
	12	MON	FIRST DAY OF SCHOOL FOR STUDENTS
	15	THURS	KINDERGARTEN STARTS
	19	MON	VPK STARTS
	23	FRI	EARLY RELEASE DAY
	30	FRI	EARLY RELEASE DAY
<b>SEPTEMBER</b>	2	MON	LABOR DAY – HOLIDAY FOR ALL
	6	FRI	EARLY RELEASE DAY
	11	WED	FIRST INTERIM ENDS
	13	FRI	EARLY RELEASE DAY
	16	MON	SECONDARY INTERIMS POSTED ON FOCUS
	19	THURS	ELEMENTARY INTERIMS POSTED ON FOCUS
	20	FRI	EARLY RELEASE DAY
	27	FRI	EARLY RELEASE DAY
<b>OCTOBER</b>	4	FRI	EARLY RELEASE DAY
	11	MON-FRI	FTE SURVEY II
	14	MON	TEACHER WORK DAY/STUDENT HOLIDAY
	16	WED	SECONDARY GRADES POSTED ON FOCUS
	18	FRI	ELEMENTARY REPORT CARDS POSTED ON FOCUS/ISSUED
	18	FRI	EARLY RELEASE DAY
	22	TUES	SECONDARY REPORT CARDS ISSUED
	25	FRI	EARLY RELEASE DAY
<b>NOVEMBER</b>	8	FRI	EARLY RELEASE DAY
	11	MON	VETERANS' DAY/ HOLIDAY FOR ALL
	15	FRI	SECOND INTERIM ENDS
	15	FRI	EARLY RELEASE DAY
	20	WED	SECONDARY INTERIMS GRADES POSTED TO FOCUS
	22	FRI	EARLY RELEASE DAY
	25	MON	ELEMENTARY INTERIMS REPORT CARDS POSTED ON FOCUS/ISSUED
	25	MON	BLOCK REPORT CARDS ISSUED
	27-29	WED-FRI	THANKSGIVING BREAK (28 & 29 HOLIDAY FOR ALL)

	DATE	DAY	
<b>DECEMBER</b>	6	FRI	EARLY RELEASE DAY
	13	FRI	EARLY RELEASE DAY
	18-20	WED-FRI	EXAMS DAYS/EARLY DISMISSAL
	23-31	WED-FRI	WINTER BREAK - TEACHER/STUDENT HOLIDAY/NON-WORK DAY FOR ALL
<b>JANUARY</b>	1	WED	HOLIDAY FOR ALL
	2-3	THURS - FRI	WINTER BREAK - TEACHER/STUDENT HOLIDAY/ NON-WORK DAY FOR ALL
	6-7	MON-TUES	WINTER BREAK - TEACHER/STUDENT HOLIDAY
	8	WED	TEACHERS/STUDENTS RETURN/END OF 1ST SEMESTER
	10	FRI	EARLY RELEASE DAY
	13	MON	SECONDARY GRADES POSTED ON FOCUS
	15	WED	ELEMENTARY REPORT CARDS POSTED ON FOCUS/ISSUED
	17	FRI	SECONDARY REPORT CARDS ISSUED
	17	FRI	EARLY RELEASE DAY
	20	MON	MARTIN L. KING, JR. DAY – HOLIDAY FOR ALL
	24	FRI	EARLY RELEASE DAY
	31	FRI	EARLY RELEASE DAY
	<b>FEBRUARY</b>	3-7	MON-FRI
7		FRI	EARLY RELEASE DAY
10		MON	THIRD INTERIM ENDS
13		THURS	SECONDARY INTERIMS POSTED ON FOCUS
14		FRI	EARLY RELEASE DAY
17		MON	PRESIDENT'S DAY/HURRICANE MAKE-UP DAY
18		TUES	BLOCK-REPORT CARDS ISSUED/ ELEMENTARY INTERIMS POSTED ON FOCUS/ISSUED
21		FRI	EARLY RELEASE DAY
<b>MARCH</b>	28	FRI	EARLY RELEASE DAY
	6	FRI	EARLY RELEASE DAY
	13	FRI	END OF THIRD NINE WEEKS/EARLY RELEASE DAY
	16-20	MON-FRI	SPRING BREAK
	23	MON	STUDENT HOLIDAY/TEACHER WORK DAY
	20	FRI	EARLY RELEASE DAY
	23	FRI	EARLY RELEASE DAY
	25	WED	SECONDARY GRADES POSTED ON FOCUS
	27	FRI	ELEMENTARY REPORT CARDS POSTED ON FOCUS/ISSUED
<b>APRIL</b>	27	FRI	EARLY RELEASE DAY
	31	TUES	SECONDARY REPORT CARDS ISSUED
	3	FRI	EARLY RELEASE DAY
	10	FRI	TEACHER/STUDENT HOLIDAY
	23	THURS	FOURTH INTERIM ENDS

# 2019-20 Calendar

	DATE	DAY	
APRIL	24	FRI	TEACHER/STUDENT HOLIDAY
	29	WED	SECONDARY INTERIMS POSTED ON FOCUS
MAY	1	FRI	EARLY RELEASE DAY
	4	FRI	BLOCK REPORT CARDS ISSUED/ELEMENTARY INTERIMS POSTED ON FOCUS/ ISSUED
	8	FRI	EARLY RELEASE DAY
	15	FRI	EARLY RELEASE DAY
	22	FRI	EARLY RELEASE DAY
	25	MON	MEMORIAL DAY-HOLIDAY FOR ALL
	26-28	TUES-THURS	EXAMS DAYS/EARLY DISMISSAL
	28	THURS	END OF SECOND SEMESTER/LAST DAY FOR STUDENTS
	28	THURS	ELEMENTARY REPORT CARDS ISSUED
	29	FRI	ELEMENTARY REPORT CARDS POSTED ON FOCUS
	29	FRI	POST PLANNING/ LAST DAY FOR TEACHERS
JUNE	1	MON	SECONDARY SEMESTER GRADES POSTED ON FOCUS
	MID-JUNE		SECONDARY REPORT CARDS ISSUED

**Fridays are Early Release Days**

**Student Days 1st Semester – 90**

**Student Days 2nd Semester – 90**

\* During the 2019 – 2020 school year, emergency days will be taken in the following order: November 27 and February 17. The order for using make up days for schools closed due to emergencies will depend on where the emergencies fall during the school year.



# School Enrollment Information

**INSTRUCTIONS:** Please gather the following documents to present to your child's school in order to register a student new to Brevard Public schools. As a reminder, to enter kindergarten, children must be 5 years old on or before September 1. To enter first grade, children must be 6 years old on or before September 1.

**First Time Entry** - To register your child in school, the following documentation is needed:

## ■ 1. Verification of age (with one of the following):

- A. Transcript of child's birth (Birth Certificate)
- B. Insurance policy
- C. Passport
- D. School record
- E. Certification of baptism, accompanied by parent's affidavit
- F. Bona fide Bible record, accompanied by parent's affidavit
- G. Affidavit of age sworn by parent, accompanied by a medical practitioner's statement

## ■ 2. Verification of legal name:

- A. Birth Certificate

## ■ 3. Verification of immunizations and physical exam:

- A. Proof of Immunizations on Department of Health Form 680, which can be obtained at one of the Department of Health locations: Titusville Clinic, 611 Singleton Ave; Viera Clinic, 2555 Judge Fran Jamieson Way; and Melbourne Clinic, 601 E. University Boulevard.
- B. Proof of physical examination by a U.S. doctor within the last year. If documentation cannot be provided, a physical examination must be scheduled within thirty (30) days.  
***\*Please note that thirty (30) days is not extended to PreK and Kindergarten students.***

## ■ 4. Verification of academic history

- A. Transcript
- B. Last report card
- C. Withdrawal form

## ■ 5. Verification of Exceptional Student Education information

- A. Current IEP
- B. Current 504 Plan

## ■ 6. Verification of your residence (domicile) with one of the following from each tier:

### Tier 1

- A. Current driver license (Section 322.19(2), F.S. requires that you update your address information on your driver's license within thirty (30) calendar days of moving)
- B. Current Homestead Exemption Card or Purchase Contract (with expected closing date within ninety (90) days of school) or Warranty Deed
- C. Lease/rental agreement (with your name as the renter)

### Tier 2

- A. Current utilities statement (within the last 30-45 days)
- B. Florida Voter Registration Card
- C. Florida Vehicle Registration or Title
- D. A utility hook up or work order dated within 60 days
- E. Medical or health card with address listed
- F. Current homeowner's insurance policy or bill
- G. Current automobile insurance policy or bill
- H. A letter from a homeless shelter, transitional service provider, or a halfway house verifying you receive mail at that address.

**Please be advised:** *The students of parents/guardians who falsify address information will be withdrawn and required to enroll at the zoned school. Student may forfeit any future opportunity to attend a school other than his/her zoned school.*

## ■ 7. Verification of Legal Guardianship – If you are not the legal guardian or residential custodial parent of a student, Brevard Public Schools' procedures require that one of the following documents be provided for enrollment:

- A. Court custody documentation (must include divorce decree and parenting plan signed by a judge)
- B. Educational Power of Attorney – Please utilize Brevard Public Schools' Educational Power of Attorney form available from the school.
- C. Educational Guardianship Affidavit – Please utilize Brevard Public Schools' Educational Guardianship Affidavit Form. This form will be accepted only when parents or custodial parent lives outside Brevard County, Florida and adjacent counties.
- D. Department of Children and Families placement letter.

**Previously Enrolled Students** - To register your child in school, the following documentation is needed:

■ **1. Proof of your residence with one of the following from each tier:**

**Tier 1**

- A. Current driver license (Section 322.19(2), F.S. requires that you update your address information on your driver's license within thirty (30) calendar days of moving)
- B. Current Homestead Exemption Card or Purchase Contract (with expected closing date within ninety (90) days of school) or Warranty Deed
- C. Lease/rental agreement (with your name as the renter)

**Tier 2**

- A. Current utilities statement (within the last 30-45 days)
- B. Florida Voter Registration Card
- C. Florida Vehicle Registration or Title
- D. A utility hook up or work order dated within 60 days
- E. Medical or health card with address listed
- F. Current homeowner's insurance policy or bill
- G. Current automobile insurance policy or bill
- H. A letter from a homeless shelter, transitional service provider, or a halfway house verifying you receive mail at that address

**Please be advised:** The students of parents/guardians who falsify address information will be withdrawn and required to enroll at the zoned school. Student may forfeit any future opportunity to attend a school other than his/her zoned school.

■ **2. Verification of Legal Guardianship** – If you are not the legal guardian or residential custodial parent of a student, Brevard Public Schools' procedures require that one of the following documents be provided for enrollment:

- A. Court custody documentation (must include divorce decree and parenting plan signed by a judge)
- B. Educational Power of Attorney – Please utilize Brevard Public Schools' Educational Power of Attorney form available from the school.
- C. Educational Guardianship Affidavit – Please utilize Brevard Public Schools' Educational Guardianship Affidavit Form. This form will be accepted only when parents or custodial parent lives outside Brevard County, Florida and adjacent counties.
- D. Department of Children and Families placement letter.

**Section 837.06, Florida Statutes:** False official statements - Whoever knowingly makes a false statement in writing with the intent to mislead a public servant in the performance of his or her official duty shall be guilty of a misdemeanor of the second degree, punishable as provided in s. 775.082 or s. 775.083. History.—s. 58, ch. 74-383; s. 34, ch. 75-298; s. 207, ch. 91-224; s. 1313, ch. 97-102.



# Immunization Requirements 2019-20

GRADE LEVEL	SHOTS REQUIRED	
<b>Pre K</b>	<ul style="list-style-type: none"> <li>• 4 DTaP</li> <li>• 1 MMR</li> <li>• 3 Hep B</li> </ul>	<ul style="list-style-type: none"> <li>• 3 Polio</li> <li>• 1-4 Hib (age appropriate)</li> <li>• 1 Varicella (or certification of disease)</li> </ul>
<b>Kindergarten</b>	<ul style="list-style-type: none"> <li>• 4-5 DTaP*</li> <li>• 2 MMR</li> <li>• 2 Varicella (or certification of disease)</li> </ul>	<ul style="list-style-type: none"> <li>• 3-5 Polio (last dose must be after age 4)</li> <li>• 3 Hep B</li> </ul>
<b>1-6</b>	<ul style="list-style-type: none"> <li>• 4-5 DTaP*</li> <li>• 2 MMR</li> <li>• 2 Varicella (or certification of disease)</li> </ul>	<ul style="list-style-type: none"> <li>• 3-4 Polio*</li> <li>• 3 Hep B</li> </ul>
<b>7-11</b>	<ul style="list-style-type: none"> <li>• 4-5 DTaP*</li> <li>• 2 MMR</li> <li>• 2 Varicella (or certification of disease)</li> </ul>	<ul style="list-style-type: none"> <li>• 1 Tdap</li> <li>• 3 HepB</li> </ul>
<b>12</b>	<ul style="list-style-type: none"> <li>• 4-5 DTaP*</li> <li>• 3-4 Polio*</li> <li>• 3 Hep B</li> </ul>	<ul style="list-style-type: none"> <li>• 1 Tdap</li> <li>• 2 MMR</li> <li>• 1 Varicella (or certification of disease)</li> </ul>

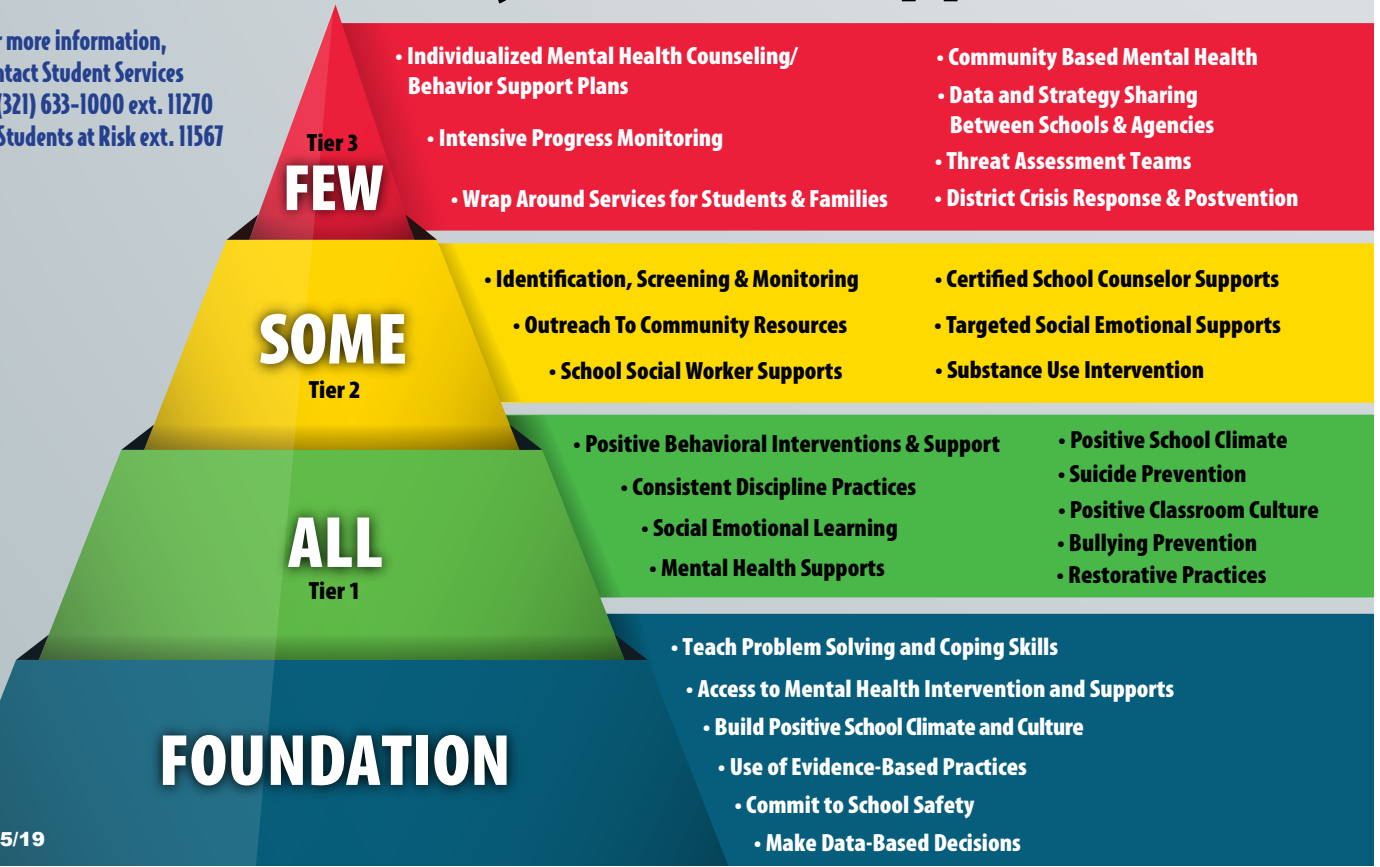
### Notes of Exception:

- A child who commenced vaccination after 7 years of age would have only three Tdap/TD doses.
- DTP is acceptable for DTaP.
- \* Three Polio doses are accepted only if the last dose is given after 4 years of age and 6 months after the second dose
- K-12: \* 4 DTaP doses are accepted only if the last dose is given after 4 years of age and 6 months after the second dose

Brevard Public Schools' mental health plan provides direct access to a continuum of mental health supports for students and families that will foster academic success and positive lifelong outcomes.

## Mental Health Systems of Supports

For more information, contact Student Services at (321) 633-1000 ext. 11270 or Students at Risk ext. 11567



# Students-in-Transition

## McKinney-Vento Act

The McKinney-Vento Homeless Assistance Act is federal legislation that was passed to address growing concerns about the plight of individuals experiencing homelessness. The Act defines “homeless children and youths” as “individuals who lack a fixed, regular and adequate nighttime residence.” Educational issues and requirements related to homelessness are addressed in the law.

## Definition of homeless students

- Living in emergency or transitional shelters, FEMA trailers, abandoned in hospitals
- Sharing the housing of other persons due to loss of housing or economic hardship or a similar reason; “doubled up”
- Living in cars, parks, campgrounds, public spaces, abandoned buildings, substandard housing, bus or train stations, or similar settings
- Living in hotels or motels due to economic hardship

## School District Services

- Ensure access to school and appropriate services
- Enroll homeless students in school immediately
- Provide counseling if needed
- Provide free lunch
- Provide school supplies if needed
- Provide after school academic support
- Provide transportation to the school of origin when requested and in the child’s best interest.

Grant-funded Homeless Information Specialist services for student/families-in-transition are available during the 2018-2019 school year. If parents/guardians are interested in these services, they should make a request at their child’s school for a Referral be completed and sent to the district homeless liaison.

**District Homeless Student Liaison:**  
**TBA**  
**Phone: 633-1000 ext. 11557**

# Exceptional Students

Exceptional Student Education (ESE) services are provided to students who may be classified as learning disabled, intellectually disabled, emotionally- and behaviorally-disordered, hearing impaired, visually impaired, physically handicapped, speech impaired, language impaired, autism spectrum disabled and gifted. Related services include educationally-relevant occupational therapy and physical therapy. The ESE program is funded from state, federal and local allocations. Policies, programs and procedures are established in accordance with state and federal regulations and requirements.

Exceptional Education classes are located at all schools. Students may access a classroom that meets their individual needs at their neighborhood school or at a school within their feeder pattern.

For information about the variety of services available to students in Exceptional Education, visit the [Exceptional Student Education](#) section of the BPS website or contact the ESE department at (321) 633-1000 ext. 11520.

# Bus Transportation

Brevard Public School’s transportation department transports more than 23,000 students each school day on 352 school bus routes. Students who live more than two miles from their assigned school are eligible for school bus transportation. Students shall board the school bus at the nearest designated bus stop. Students will be assigned one school bus stop based on their official/legal home of record. Multiple school bus stops for students are not authorized.

For more information, visit the [Transportation](#) section of the BPS website.

## Regional Busing

Regional busing was made available for the 2019-2020 school year for any student with an approved Educational Program Opportunity application and who had indicated interest in the service by July 20, 2018. Students can be placed onto a waitlist if the deadline was missed. During registration at schools, regional bus passes will be distributed which will indicate the stop location and times. Students need this pass to access the bus the first day of school.

For more information, contact the Division of Equity, Innovation and Choice at (321) 633-1000 ext. 395.





# Head Start Program

Brevard Public Schools offers the Head Start program to 624 eligible children and families at 12 elementary schools, one high school and one stand-alone site:

## North Area

**Coquina Elementary**

**Enterprise Elementary**

**Mims Elementary**

## Central Area

**Cambridge Elementary**

**Endeavour Elementary**

**Saturn Elementary**

**Sherwood Elementary**

## South Area

**Discovery Elementary**

**Jupiter Elementary**

**Palm Bay Elementary**

**Port Malabar Elementary**

**South Area Head Start**

In addition to a free full-day preschool program, Head Start provides comprehensive services to enrolled children and their families, which include, health, nutrition, social, and other services based on each family's individual needs. Head Start emphasizes the role of parents as their child's first and most important teacher.

## Step 1: Eligibility

Children must be 3 or 4 years old on or before September 1, 2019 and meet the federal income poverty guidelines. Families must complete a Head Start Application, available at select school sites or at [www.brevardschools.org/HeadStart](http://www.brevardschools.org/HeadStart). The completed application is sent to the Head Start administrative office and the family will be contacted for a face-to-face eligibility meeting with a Family Advocate. An information page is provided with the application outlining documents your family will need to bring to the eligibility meeting.

## Step 2: Selection

Eligibility does not guarantee selection for the program. Children are selected for the program from the waitlist maintained at the Head Start administrative office. Once a child has been selected for the program the family will be asked to complete school registration. To ensure registration is completed within the designated timeframe, a family advocate is available to assist.

## Step 3: School Registration

Families selected for the Head Start program must bring all required school registration documents to the school. Children registering for Head Start VPK must bring the VPK Certificate of Eligibility along with required school registration documents. The VPK Certificate is obtained online through the Early Learning Coalition of Brevard. Families who do not complete registration within the designated timeframe will be returned to the waiting list.

## Contact

Head Start Administrative Office | Clearlake Education Center  
1225 Clearlake Road | Cocoa | FL 32922  
(321) 617-7786, ext. 220 | [www.brevardschools.org/Head-Start](http://www.brevardschools.org/Head-Start).



# Testing Calendar for 2019-20

Dates	Test	Grade
July 9 — Oct. 12 (within first 30 days)	Florida Kindergarten Readiness Screening (FLKRS)	Kindergarten
Sept. 9 — 20	FSA Writing retake	10 retake
Sept. 9 — 27	FSA end-of-course (EOC) Algebra 1/Algebra 1 RETAKE & Geometry	7-12
Sept. 9 — 27	FSA Reading retake	10 retake
Sept. 9 — 27	NGSSS EOC: Biology 1, Civics, U.S. History	eligible students
Oct. 16	(PSAT/NMSQT): Reading & Math	10
Nov. 19 — Nov. 22	FSA FT: Writing Field Test Make-up 11/19 - 11/22	selected students
Dec. 2 — 20	NGSSS EOC: Biology 1, Civics, U.S. History	eligible students
Dec. 2 — 20	FSA (EOC) Algebra 1/Algebra 1 retake & Geometry	7-12
Jan — Mar	National Assessment of Educational Progress (NAEP): Math, Reading, Science	K-12
Jan. 27 — Mar. 11	ACCESS for English Language Learners (WIDA): Reading, Writing, Listening, Speaking	7, 8, 9, 10, 11, 12
Feb. 24 — Mar. 13	FSA-WR Writing retake	10 retake
Feb. 24 — Mar. 13	FSA-RR Reading retake	10 retake
Feb. 24 — Mar. 13	FSA-EOC R Algebra 1 RETAKE	eligible students
Mar. 2 — 17	Florida Standards Alternate Assessment (FSAA) ELA & Math; Writing; Science; EOC Civics (students in course)	7, 8
Mar. 4 Make-Up: 3/25 SAT NCR: 4/14	SAT: Reading, Writing	10, 11, 12
	SAT: Math	10, 11, 12
Feb. 2 — Mar. 15	FSAA: ELA & Writing EOC: Algebra 1, Biology 1, Geometry, U.S. History	9, 10

# Testing Calendar for 2019-20 (tentative)

Dates	Test	Grade
Apr 1 – 14	FSA-W Writing Make-up 4/1 - 4/15	7, 8, 9, 10
May 1 – 28	FSA-M Math	7, 8
May 1 – 28	FSA-R Reading	7, 8, 9, 10
May 1 – 28	NGSSS Science Make-up 5/14 - 5/22	8
May 1 – 28	FSA-EOC Algebra 1 & Geometry	7, 8, 9, 10, 11, 12
May 1 – 28	NGSSS-EOC Biology 1, Civics, U.S. History	eligible students
TBD	FSA-W Writing retake	7 retake
May	AP exams: all subjects	eligible students
July 13 – 24	FSA-EOC Algebra 1/Algebra 1 RETAKE & Geometry	7, 8, 9, 10, 11, 12
July 13 – 24	NGSSS-EOC Biology 1, Civics, U.S. History	eligible students

## 2019-20 Brevard's Elementary Schools

Testing Windows	Assessment	Subject	Type	Grade
11/19 Make-up 11/19- 11/22	FSA-FT	Writing Field Test	PBT	Selected Schools 4,5,6
January-March	NAEP	Gr 4 - Math, Reading, Science	PBT	No Selected Schools
1/27-3/11	ACCESS for ELLs (WIDA)	Reading, Writing, Listening, Speaking	PBT	K-6
3/2-4/17	FSA-A	3-6 ELA & Math; 4-6 Writing; 5 Science	PBT	3, 4, 5, 6
4/1 Make -up 4/1-4/15	FSA-W	Writing	PBT	4, 5, 6
4/1 & 4/2 Make up 4/1-4/15	FSA-R	Reading	PBT	3
5/5 & 5/6 Make-up 5/5-5/15	FSA-R	Reading	PBT	4, 5, 6
5/11 & 5/12 Make-up 5/11-5/15	FSA-M	Math	PBT	3, 4, 5, 6
5/14 & 5/15 Make-up 5/14 -5/22	NGSSS	Science	PBT	5
5/11 - 5/15	FSA-W	Writing SECOND WINDOW	PBT	4, 5, 6

# Voluntary Prekindergarten Program

Brevard Public Schools, in collaboration with the Early Learning Coalition of Brevard, offers a Voluntary Prekindergarten Program (VPK) at selected schools with limited enrollment. VPK is a FREE early learning program to prepare four-year-olds for kindergarten and build the foundation for school success. Students must be 4 years old on or before September 1, 2019 and reside in Florida to qualify for the program. Schools with VPK Programs are listed below. Registration for VPK is a two-step process.

## STEP 1 - Parents obtain a VPK Certificate of Eligibility.

In order to obtain a VPK Certificate of Eligibility, parents must visit the Early Learning Coalition website at <https://www.elcbrevard.org/> to complete the online registration process. Please contact the Early Learning Coalition at (321) 637-1800 for additional information.

## Step **FOUR**ward VPK

*Eligible students must reside in the attendance area of the school.*

Roy Allen Elementary  
Cape View Elementary  
Columbia Elementary  
Dr. W. J. Creel Elementary  
Croton Elementary  
Fairglen Elementary  
Golfview Elementary  
Harbor City Elementary  
MILA Elementary  
Pinewood Elementary  
Riviera Elementary  
Sabal Elementary  
Sunrise Elementary  
Turner Elementary  
Westside Elementary

## Blended VPK

*Open to eligible students unless the school is frozen to students outside the school's attendance area.*

Atlantis Elementary (frozen)  
Audubon Elementary  
Columbia Elementary  
Longleaf Elementary  
McAuliffe Elementary  
Oak Park Elementary  
Pinewood Elementary  
Riviera Elementary  
Sea Park Elementary  
Sunrise Elementary  
University Park Elementary

## STEP 2 - Parents may register their child at a school site.

VPK registration is held at the school sites listed below. Please note that registration does not guarantee a VPK slot. If there are more registrations submitted than space available at the school site, the VPK slots will be filled by a lottery or selection process. Registration will continue for programs with openings. Parents will be notified if their child will participate or be placed on a wait list.

The items needed for registration at the school are the VPK Certificate of Eligibility, child's original birth certificate, immunization record, current physical examination and two (2) forms of residence verification.

## Early Childhood Education VPK

*Open to all eligible students*

Eau Gallie High School  
Merritt Island High School  
Palm Bay High School  
Satellite High School  
Viera High School

## Please note attendance limitations and space availability at all VPK schools.

Office of Early Childhood, ext. 11340  
[www.brevardschools.org](http://www.brevardschools.org)



# Elementary Programs

The goal of Brevard Public Schools is to educate students in a child-centered environment that promotes and develops literacy and understanding of mathematics, social studies, language arts and scientific concepts. In this environment students are viewed as active participants who are encouraged to explore, manipulate objects, question, take risks, work cooperatively, think, feel, trust, and evaluate themselves. The teacher's role in this environment is to facilitate learning rather than to only dispense knowledge. It is in this environment that students become responsible for their learning and behavior.

## Grade Level Standards

The Florida Standards have been established in the areas of language arts, mathematics and social studies. The Next Generation Sunshine State Standards are established for science. These grade-level standards list key benchmarks for student progress.

## English Language Arts

The goal of the Brevard Public Schools' English Language Arts (ELA) Program is to integrate instruction of reading, writing, grammar, and speaking & listening in order to develop and refine students' literacy.

Houghton Mifflin Harcourt for grades K-6 **Florida Journeys** is the district adopted English Language Arts textbook series. District created units utilize the text from this program to support standards aligned instruction. The instruction is systematic, balanced, and research-based, building success with every lesson that is in-

troduced and reinforced. Foundational skills are built from kindergarten forward. Deep comprehension tasks include discussion about texts and writing in response to texts. The series provides quality texts, balancing literature and informational reading opportunities for students. Support for differentiated instruction is included.

Writing instruction in the **Florida Journeys** includes lessons on how to improve students' abilities in the writing process and in responding to what they have read. The standards-based curriculum follows a progression from kindergarten to sixth grade that develops writers who use the craft to learn, think, and communicate across the disciplines, stressing the linkage between writing and reading. These lessons follow a logical sequence to build students' confidence and skill. The qualities of writing are identified through the instruction of Six Traits (Ideas, Organization, Voice, Word Choice, Fluency, and Conventions) and are applied through process writing (planning, drafting, revising, editing, and publishing). This instruction is designed to produce mastery of oral and written communication.

The Spelling component for grades 1-6 of the **Florida Journeys** program will be used as the district adopted spelling curriculum. This component creates a connection to reading in using words that reflect the vocabulary, word study (etymology, morphology, and syllable types), and phonics components of the grade level texts.



Grammar is addressed in **Florida Journeys** via embedded lesson relating to writing. The authentic texts included in the textbook provide quality language for study of appropriate grammar and usage in a mentor text method.

In addition to the resources available in **Florida Journeys**, district-created documents, such as Adapted Text Units, are available for additional instruction in literacy.

## Mathematics

The mathematics programs for grades K-5 include **Pearson Realize enVisionMath** (Florida © 2015), Eureka Math (Great Minds, Inc.), and Ready MAFS (Curriculum Associates). These programs provide in-depth instruction and a variety of assessment opportunities for ongoing progress monitoring.

The district adopted mathematics program for grade 6 is **Big Ideas Learning, LLC, Bid Ideas Math Advanced 1** (Florida © 2015). This program is organized into 15 chapters and the content is arranged to provide depth and cohesiveness. A variety of assessments opportunities are offered throughout the program.

District created resources aligned with both programs support standards aligned instruction. They are also research-based and designed to engage students in problem solving activities that enable

them to build deep understanding of the mathematical concepts and ideas. Activities and lessons that support differentiated instruction and response-to-intervention are offered in within these programs.

## Science

Brevard Public Schools' science goal is to provide students with a well-balanced K-6 curriculum, which is aligned with Florida's Next Generation Sunshine State Standards. To develop science literacy in our students, they are actively involved in inquiry investigations that teach the content as well as the essential process skills. The district adopted instructional materials, **STEMscopes Florida 2.0** (K-5) and **McGraw Hill Grade 6 Florida Comprehensive**, include multiple hands-on, minds-on activities that provide science content and real-world connections.

## Social Studies

Brevard Public Schools' social studies core curriculum focuses on Florida's Next Generation Sunshine State Standards while engaging students in lessons to develop the ability to make informed and reasoned decisions. Activities provide pathways for engagement, discussion and historical thinking while incorporating reading, writing and mathematical integration of subject matter. The district-adopted instructional materials, **Studies Weekly** (K-5) and **TCI History Alive! The Ancient World** (Gr. 6), support standards aligned curriculum by



# DEPRESSED? ANXIOUS? WE CAN HELP!

## Structured behavioral health programs for adolescents and adults

We can help individuals who are struggling with mental health issues and take a patient-centered approach in the care we provide to everyone who comes through our doors.

We are here 24 hours a day, 7 days a week.

**Call 321-603-6550 to learn more.**



**PALM POINT**  
Behavioral Health

2355 Truman Scarborough Way  
Titusville, FL 32796

**P:** 321-603-6550 • **F:** 321-800-2860

[palmpointbehavioral.com](http://palmpointbehavioral.com)

With limited exceptions, physicians are not employees or agents of this hospital. Model representations of real patients are shown. Actual patients cannot be divulged due to HIPAA regulations. For language assistance, disability accommodations and the non-discrimination notice, visit our website. 192067-2838 5/19

## Elementary Programs continued

offering tools, information and resources to encourage students to think critically and make conceptual connections to the real world.

### Music

The goal of the Brevard Public Schools music program is to provide a life-long love of music. This is accomplished by offering a cohesive, sequential program based on an appreciation for all aspects of music with an emphasis on performing music and developing music literacy. The program serves students in grades kindergarten through sixth. The Brevard Music Curriculum guide is based on the Next Generation Sunshine State Standards. Quaver provides the district's instructional resources.

### Health & Physical Education

The goal of elementary physical education in Brevard Public Schools is to provide students with a standards-based, balanced, sequential and progressive educational activity program. The program aimed at kindergarten through sixth grade students includes basic movement concepts and skills that are age and developmentally appropriate. This in turn leads to the development of motor skills, knowledge and values, which are needed to establish and maintain a healthy and physically active lifestyle. Aligned with Florida's Next Generation Sunshine State Standards for Physical Education, the **Elementary Physical Education Curriculum Guide** is available to all teachers as the basis for their curriculum. The Presidential Youth Fitness Program (PYFP) helps schools achieve excellence in physical education through quality fitness education and assessment practice. Fitnessgram, part of the PYFP, is the physical fitness assessment program used by all Brevard schools. Individual fitness reports should be available to all students and parents.

The goal of the elementary health program is to develop a health consciousness in all students utilizing a standards based, developmentally appropriate curriculum aimed at enriching their wellbeing. Mandated by the Florida statute, Brevard Public Schools developed a comprehensive, age and developmentally appropriate Health Education curriculum. The **K-6 Healthy Body Systems Curriculum Guide** is available to teachers with lessons and activities that is aligned to standards and easily integrated into aligned content courses.

Beginning in the sixth grade **Mental and Emotional Health** is introduced. In Florida, quality mental and emotional health education has been identified as a high priority by Florida Governor DeSantis, First Lady DeSantis and the Florida Legislature. For decades, Comprehensive Health Education has included mental and emotional health as part of required instruction through s. 1003.42 (2)(n), F.S., State Board Rule 6A-1.094121, F.A.C., establishes a minimum of five hours of required instruction related to mental and emotional health education for students in grades 6-12. The rule was approved by the State Board of Education on July 17, 2019 and will be in effect

for the 2019-2020 school year. In addition to Mental and Emotional health, this state board rule requires students to receive instruction related to substance abuse prevention.

**Recess-** 20 minutes of Recess required daily F.S. 1003.455 (6) (3), each district school board shall provide at least 100 minutes of supervised, safe, and unstructured free-play recess each week for students in kindergarten through grade 5 so that there are at least 20 consecutive minutes of free-play recess per day. This requirement does not apply to charter schools.

### Art

The goal of the Brevard County Public Schools Art program is to provide high-quality instruction and assessment in elementary art that gives students the opportunity to experience a rigorous, comprehensive and authentic visual art education. Learning in the arts provides students with the opportunity to develop essential skills including problem solving, personal expression, collaboration, creativity, critical thinking and visual communication. The art program is correlated with the Next Generation Sunshine State Standards. The district adopted series is **Davis Digital, Explorations in Art (K-5) and Exploring Visual Design (Grade 6)**.

### Gifted

The goal of the Brevard Public Schools Gifted Program is to provide appropriate levels of enrichment to meet the varying needs of students. This program focuses on the academic and social emotional needs of students identified as needing gifted services. District and school-based resources are utilized to support the instructional needs for each grade level.

## Controlled Open Enrollment

BPS allows parents to decide which academic environment is best for their child. The district's "open enrollment" plan affords all students K-12 the opportunity to attend a public school other than their assigned school. Parents who are interested in open enrollment must complete an Educational Location Option (ELO) or Educational Program Opportunity (EPO) online application. Every effort is made to accommodate requests, but factors such as school overcrowding may impact acceptance.

Additional information, including details about regional busing for EPO students (page 14), applications and school options, can be found at the [Equity, Innovation and Choice](#) section of the BPS website or by calling (321) 633-1000 ext. 11395.



# RECYCLE RIGHT, BREVARD!

**Single Stream Recycling** is an automated sorting process designed to handle non-hazardous items from your **kitchen, laundry room, bathroom, office** and **mailbox**. However, non-recyclable items can slow down the process and risk good recyclables from being recycled into something new.

Recycle by Room and include only these items in your curbside recycling cart! **DO NOT** bag recyclables or include loose plastic bags in your recycling cart!



When in doubt, throw it out in the garbage!

\*Please empty and puncture bottom of aerosol cans before recycling.

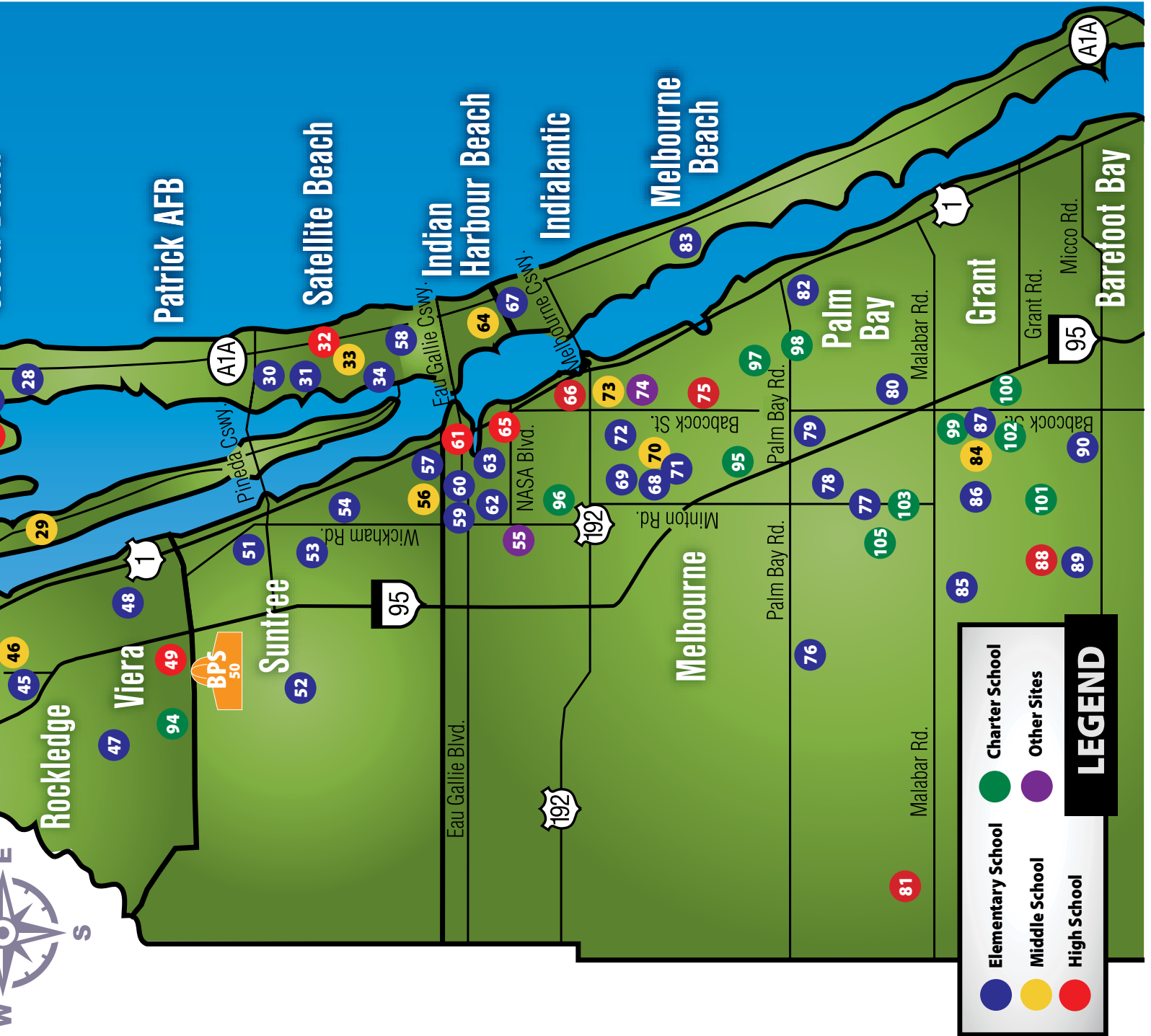


To learn more visit our **NEW** website  
[www.brevardfl.gov/solidwaste/recyclinghome](http://www.brevardfl.gov/solidwaste/recyclinghome)





- 62 ALLEN, ROY ELEMENTARY
- 45 ANDERSEN, HANS CHRISTIAN ELEMENTARY
- 9 APOLLO ELEMENTARY
- 5 ASTRONAUT HIGH
- 14 ATLANTIS ELEMENTARY
- 22 AUDUBON ELEMENTARY
- 88 BAYSIDE HIGH
- 50 BREVARD PUBLIC SCHOOLS MAIN OFFICE (PBS)
- 38 BRIDGE ELEMENTARY MAGNET
- 19 CAPE VIEW ELEMENTARY
- 18 CARROLL, LEWIS ELEMENTARY
- 70 CENTRAL MIDDLE
- 35 CHALLENGER 7 ELEMENTARY
- 39 CLEARLAKE EDUCATION CENTER
- CENTRAL AREA ADULT/COMMUNITY EDUCATION CENTER
- 26 COCOA BEACH JR./SR. HIGH
- 37 COCOA JR./SR. HIGH
- 87 COLUMBIA ELEMENTARY
- 14 COQUINA ELEMENTARY
- 57 CREEK, DR. W.J. ELEMENTARY
- 60 CROTON ELEMENTARY
- 33 DELAURA MIDDLE
- 76 DISCOVERY ELEMENTARY
- 61 EAU GALLIE HIGH
- 24 EDGEWOOD JR./SR. HIGH
- 96 EDUCATIONAL HORIZONS CHARTER
- 93 EMMA JEWEL CHARTER ACADEMY
- 41 ENDEAVOUR ELEMENTARY MAGNET
- 15 ENTERPRISE ELEMENTARY
- 36 FAIRGLEN ELEMENTARY
- 28 FREEDOM 7 ELEMENTARY
- 83 GEMINI ELEMENTARY
- 43 GOLDFIELD ELEMENTARY
- 63 HARBOR CITY ELEMENTARY
- 81 HERITAGE HIGH
- 31 HOLLAND, SPESSARD L. ELEMENTARY
- 64 HOOVER, HERBERT MIDDLE
- 95 IMAGINE SCHOOLS AT WEST MELBOURNE
- 13 IMPERIAL ESTATES ELEMENTARY
- 67 INDIALANTIC ELEMENTARY
- 11 JACKSON, ANDREW MIDDLE
- 29 JEFFERSON, THOMAS MIDDLE
- 56 JOHNSON, L.B. MIDDLE
- 85 JUPITER ELEMENTARY
- 46 KENNEDY, JOHN F. MIDDLE
- 92 LEGACY ACADEMY CHARTER
- 78 LOCKMAR ELEMENTARY
- 53 LONGLEAF ELEMENTARY
- 4 MADISON, JAMES MIDDLE
- 47 MANATEE ELEMENTARY
- 77 MCAULIFFE, CHRISTA ELEMENTARY
- 42 MCNAIR, RONALD MAGNET
- 71 MEADOWLANE INTERMEDIATE



- 68 MEADOWLANE PRIMARY
- 66 MELBOURNE HIGH
- 21 MERRITT ISLAND HIGH
- 23 MILA ELEMENTARY
- 2 MIMS ELEMENTARY
- 3 OAK PARK ELEMENTARY
- 58 OCEAN BREEZE ELEMENTARY
- 101 ODYSSEY CHARTER ELEMENTARY CAMPUS
- 102 ODYSSEY CHARTER JR./SR. 6-12 & PREPARATORY ACADEMY K-6
- 98 PALM BAY ACADEMY CHARTER LANGUAGE IMMERSION K-3
- 99 PALM BAY ACADEMY CHARTER MIDDLE 6-8
- 97 PALM BAY ACADEMY CHARTER TRADITIONAL K-5 & IMMERSION 4-5
- 82 PALM BAY ELEMENTARY
- 75 PALM BAY HIGH AND ADULT/COMMUNITY EDUCATION CENTER
- 104 PATHWAYS AT GARDENDALE
- 103 PINEAPPLE COVE CLASSICAL ACADEMY
- 105 PINEAPPLE COVE CLASSICAL ACADEMY-West MELBOURNE
- 1 PINEWOOD ELEMENTARY
- 80 PORT MALABAR ELEMENTARY
- 52 QUEST ELEMENTARY
- 10 RIVERVIEW SCHOOL (Pre-Kindergarten Center)
- 79 RIVIERA ELEMENTARY
- 44 ROCKLEDGE HIGH
- 27 ROOSEVELT, THEODORE ELEMENTARY
- 100 ROYAL PALM CHARTER
- 59 SABAL ELEMENTARY
- 32 SATELLITE HIGH
- 40 SATURN ELEMENTARY
- 91 SCULPTOR CHARTER
- 30 SEA PARK ELEMENTARY
- 54 SHERWOOD ELEMENTARY
- 74 SOUTH AREA ADULT/COMMUNITY EDUCATION CENTER
- 55 SOUTH AREA ALTERNATIVE LEARNING CENTER
- 6 SOUTH LAKE EDUCATION CENTER
- 17 SOUTH LAKE ELEMENTARY
- 84 SOUTHWEST MIDDLE
- 16 SPACE COAST JR./SR. HIGH
- 20 STEVENSON, ROBERT LOUIS ELEMENTARY
- 73 STONE MIDDLE
- 90 SUNRISE ELEMENTARY
- 51 SUNTREE ELEMENTARY
- 34 SURFSIDE ELEMENTARY
- 8 TTUSVILLE HIGH
- 25 TROPICAL ELEMENTARY
- 86 TURNER SR., JOHN F. ELEMENTARY
- 72 UNIVERSITY PARK ELEMENTARY
- 94 VIERA CHARTER
- 49 VIERA HIGH
- 69 WEST MELBOURNE ELEMENTARY
- 65 WEST SHORE JR./SR. HIGH
- 89 WESTSIDE ELEMENTARY
- 47 WILLIAMS, RALPH M. JR. ELEMENTARY
- 7 WHISPERING HILLS EDUCATION CENTER



(321) 394-3406  
670 Dave Nisbet Dr.  
Cape Canaveral, FL 32920  
ExplorationTower.com



# Port Canaveral's Interactive **ATTRACTION** Open Daily - Port Canaveral

## 7 Stories of Fun And Exploration

- Spectacular Views of Port Canaveral
- Discovery & Exploration
- Wildlife & Ecosystem
- Interactive Exhibits
- Pilot of Virtual Ship
- Space & Technology
- Cafe & Gift Shop

**50% off**  
Up To Four People

Not valid with any other coupons or offers



# High School Graduation Programs

This guide is designed to help parents of middle and high school students plan and prepare for postsecondary success. All of Brevard Public Schools' graduation paths include opportunities to take rigorous academic courses designed to prepare students for their future academic and career choices. All students, regardless of graduation program, must earn at least a 2.0 grade point average on a 4.0 scale, and achieve passing scores on the Grade 10 Florida Standards Assessments test and the Algebra 1 EOC. In order to graduate with a standard high school diploma.

For more information about other graduation options for students with disabilities, contact your child's school counselor or exceptional student education teacher, or visit the [Exceptional Student Education](#) section of the BPS website.

Florida students entering their first year of high school in the 2019-2020 school year may choose from one of four options to earn a standard diploma. These options are as follows:

- a four-year, 26-credit graduation option
- an International Baccalaureate (IB) curriculum
- an Advanced International Certificate of Education (AICE) curriculum
- an Academically Challenging Curriculum to Enhance Learning (ACCEL) 18-credit graduation option

## 26-credit option

This program takes the traditional four years to complete high school and requires students to take at least 26 credits in core content areas. Although earning world language credit is not required, it is recommended for Florida college preparation and 2 credits of a world language is required for admission to Florida's state universities. A student may have the option of early graduation if the student meets graduation requirements in less than eight semesters or the equivalent.

## International Baccalaureate (IB) Diploma Programme

The IB Diploma Programme is a rigorous, pre-university course of study leading to internationally standardized tests. The program's comprehensive, two-year curriculum allows its graduates to fulfill requirements of many different nations' education systems. Students completing IB courses and exams from six subject groups are eligible for college credit. The award of credit is based on

scores achieved on IB exams. Students can earn up to 30 postsecondary semester credits by participating in this program at the high school level. IB students from Florida do not have to pay to take the exams. For information, visit [www.ibo.org](http://www.ibo.org).

## Advanced International Certificate of Education (AICE) Program

The AICE Program is an international curriculum and examination program modeled on the British pre-college curriculum. To be considered for an AICE diploma, a candidate must earn the equivalent of six credits by passing a combination of examinations at either the full (one credit) Advanced Subsidiary Level (AS) or double (two credits) International Advanced Level (A), with at least one course coming from each of the three curriculum areas. Florida's colleges and universities provide college credit for successfully passing the exams. AICE students from Florida do not have to pay to take the exams. For information, visit the [AICE Program](#) website.

## Accelerated 18-credit graduation option

This graduation option is designed for students who are clear about their future goals and are ready to pursue them beyond high school. To select the ACCEL 18-credit graduation option, students and their parents must meet with designated school personnel to receive an explanation of the requirement, advantages, and disadvantages of this option. Students must also receive the written consent of their parents.

For more information about high school graduation options, contact your child's counselor.



# Acceleration Programs and Advanced Coursework

Studies show that students who complete a solid academic program in high school, including advanced courses, are more likely to be successful in college. Students in all graduation programs are encouraged to take advantage of advanced course offerings and acceleration programs. These programs are available to all qualified students. For information, contact your child's school counselor.

## Dual enrollment and early admission

These programs allow eligible high school students to enroll in post-secondary courses. Students simultaneously earn credit toward high school graduation and a college degree or career certificate. BPS currently articulates with Eastern Florida State College and Florida Institute of Technology. Students are permitted to take dual enrollment courses on a part-time basis during school hours, after school or during the summer term (if available). Dual enrollment students attending EFSC do not pay registration, tuition or laboratory fees. In addition, textbooks for dual enrollment are provided to students by BPS. Dual enrollment courses will be weighted the same as courses taught through other acceleration mechanisms. Students should be aware that grades received through dual enrollment become part of the permanent postsecondary record. State universities will not admit a student who has less than a 2.0 grade point average on a 4.0 scale.

## Advanced Placement (AP) Program

The College Board's AP Program is a nationwide program consisting of more than 30 college-level courses and exams offered at participating high schools. Subjects range from art to statistics. Students who earn a qualifying grade of three or above on an AP exam can earn college credit, or AP credit, or both, depending on the college or university. Students in Florida's public secondary schools enrolled in AP courses do not have to pay to take the exams. For information, visit the [AP Program website](#).

## Florida Virtual School (FVS)

The FVS offers high-quality, online high school curricula, including AP courses. The FVS Program can be a resource for students with limited access to AP offerings. For information, visit [www.fvs.net](http://www.fvs.net).



## Adult Education

High school students have the option to take courses through the Adult Education program. Adult Education strives to provide access to high-quality programs that offer a wide variety of options for today's learner. Classes are

offered at four adult education centers, which are located conveniently throughout Brevard County. The program offers:

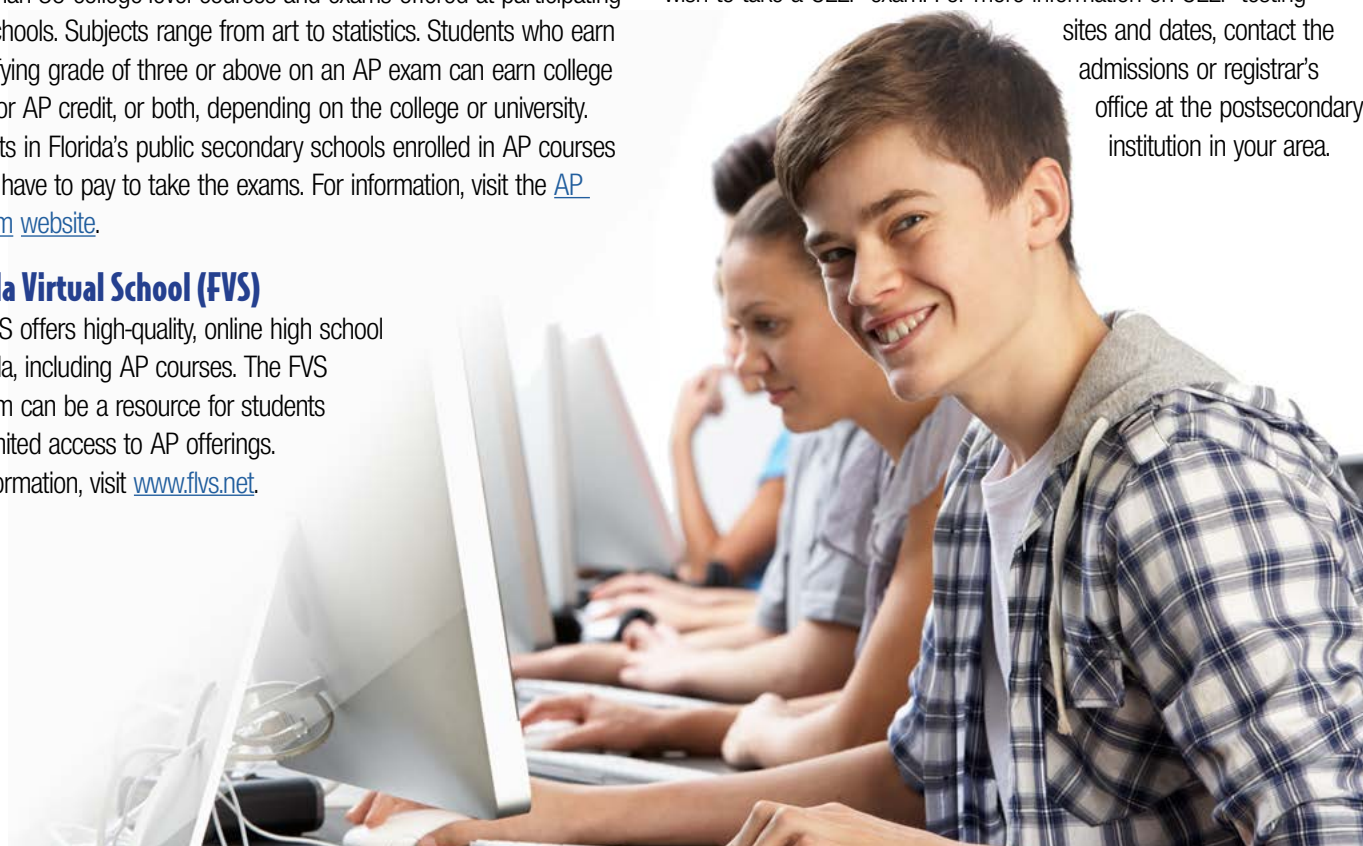
- help to students trying to earn a high school diploma or pass the high school equivalency exam (GED)
- [ESOL](#) classes
- opportunities to obtain vocational certifications.
- lifelong learning classes.

For more information, visit the [Adult Education](#) section of the BPS website or call (321) 633-3660.

## College-Level Examination Program (CLEP)

Students with strong content background in a subject area can earn credit through the College-Level Examination Program (CLEP) administered by the college they attend. Candidates for the CLEP include students who have completed an AP course but did not take or earn a qualifying score on the AP exam. Other students who have taken several high school courses in one particular subject area may wish to take a CLEP exam. For more information on CLEP testing

sites and dates, contact the admissions or registrar's office at the postsecondary institution in your area.





## Career and Technical Education

Today's rigorous and relevant Career and Technical Education (CTE) prepares students for a wide range of

CTE is at the forefront of preparing students to be "college and career ready" by equipping students with core academic skills and the ability to apply those skills to concrete situations. Students also learn employability skills such as critical thinking and responsibility in addition to job-specific, technical skills. Each CTE program offers students the opportunity to earn industry-recognized credentials and certifications which are recognized and valued by business and industry partners. Brevard's goal is that every student will graduate from high school prepared to enter and be successful in the workplace, in further career education, and/or in postsecondary degree opportunities.

high-skill, high-wage and high-demand careers as well as further educational opportunities. CTE is offered in middle schools, high schools and at the postsecondary level through dual enrollment.

## CTE Programs of Study

**A/C Refrigeration and Heating Technology**

**Accounting Applications**

**Administrative Office Specialist**

**Advanced Manufacturing Technology**

**Applied Engineering Technology**

**Applied Robotics**

**Architectural Drafting**

**Automotive Collision Technology**

**Automotive Maintenance and Light Repair**

**Aviation Assembly & Fabrication**

**Building Construction Technologies**

**Criminal Justice Operations**

**Culinary Arts**

**Dental Aide**

**Digital Design**

**Digital Media/Multi Media Design**

**Drafting**

**Early Childhood Education**

**Emergency Medical Responder**

**Engineering Pathways**

**Environmental Water & Reclamation Tech**

**Exercise Science**

**Finance**

**Family and Consumer Sciences Semester Courses**

**Fashion Technology Design Services**

**Game/Simulation/Animation/**

**Programming**

**Geospatial/Geographic Information Systems**

**Interior Design Services**

**International Business**

**Machining Technology**

**Marketing, Mgmt & Entrep Principles**

**Maritime Technology**

**Medical Administrative Specialist**

**Nursing Assistant**

**Outboard Marine Service Tech**

**Principles of Teaching**

**Public Safety Telecommunication**

**Technical Design**

**Television Production Technology**

**Web Appl Devel & Programming**

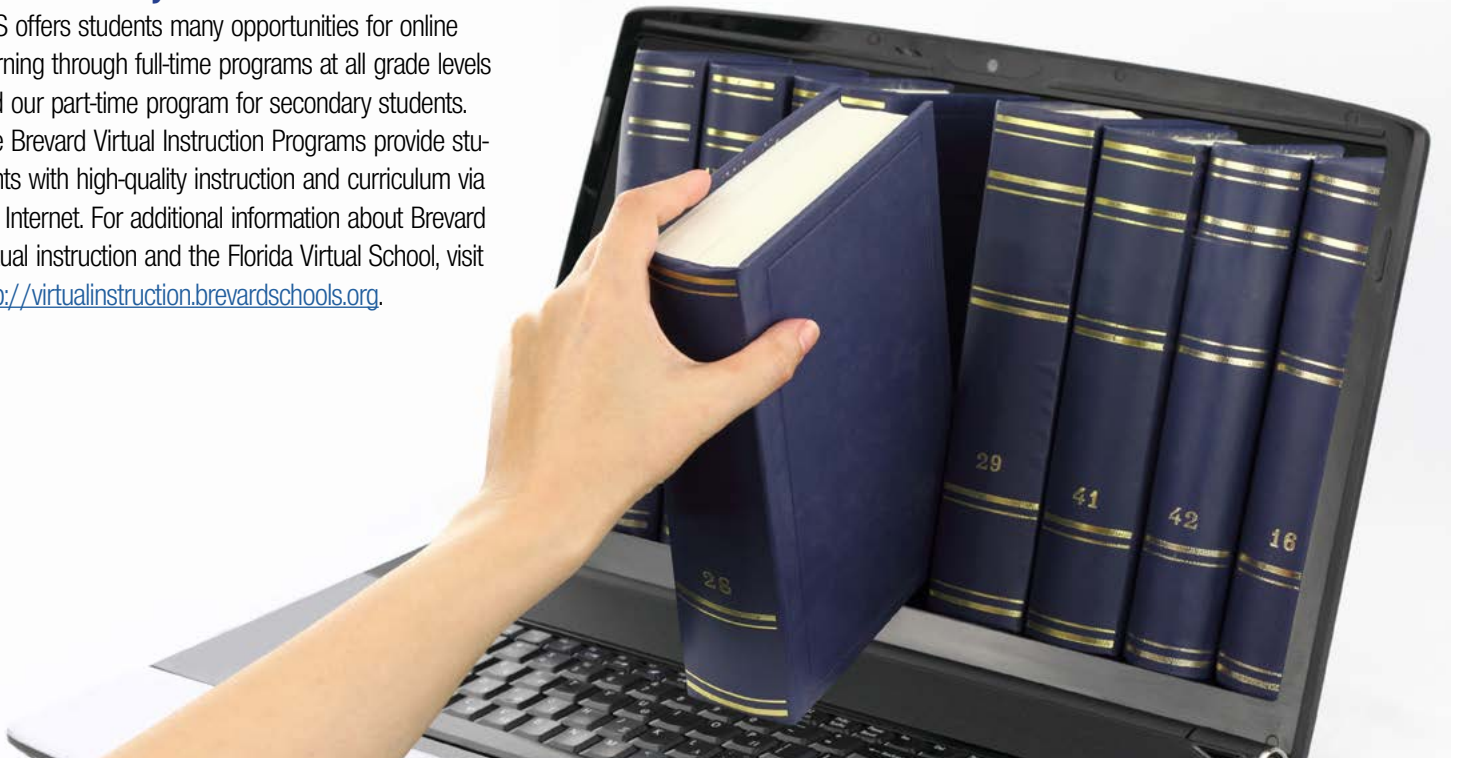
**Web Development**

Lack of English language skills will not be a barrier to admission and participation. The district may assess each student's ability to benefit from specific programs through placement tests and counseling, and, if necessary, will provide services or referrals to better prepare students for successful participation. Go to page 47 for more details on BPS' non-discrimination policy.

For more information regarding Career & Technical Education visit our website at <https://fl02201431.school-wires.net/Domain/1173> or contact the Office of Career & Technical Education at: (321) 633- 1000 ext. 11380.

## Virtual Learning

BPS offers students many opportunities for online learning through full-time programs at all grade levels and our part-time program for secondary students. The Brevard Virtual Instruction Programs provide students with high-quality instruction and curriculum via the Internet. For additional information about Brevard Virtual instruction and the Florida Virtual School, visit <http://virtualinstruction.brevardschools.org>.



**DO YOU KNOW SOMEONE WHO NEEDS TO EARN A GED OR FINISH THEIR HIGH SCHOOL DIPLOMA?**

**ARE YOU IN HIGH SCHOOL AND NEED AN EXTRA CLASS TO GRADUATE?**

See your guidance counselor or give us a call at 321-633-3662.

Visit us at [www.brevardadulthood.com](http://www.brevardadulthood.com) or find us on Facebook or Twitter



@BrevardAdultEd





# HIGH SCHOOL GRADUATION REQUIREMENTS

Subject Area		26-Credit Graduation Requirements (30-Credits Block Schools)
<b>English Language Arts (ELA)</b>	<ul style="list-style-type: none"> <li>4.0 credits in English Language Arts 1, 2, 3, 4 – English Language Arts Honors, AP, AICE, IB, and dual enrollment courses may satisfy this requirement</li> <li>Must pass the statewide, standardized Grade 10 ELA assessment (or earn a concordant score) in order to graduate with a Standard High School Diploma</li> </ul>	
<b>Mathematics</b>	<ul style="list-style-type: none"> <li>4.0 credits, one must be Algebra 1 and one must be Geometry</li> <li>Mathematics must be taken during the 9th and 10th grade years</li> <li>3.0 of the math credits must be earned in grades 9-12</li> <li>Must pass Algebra 1 EOC if Algebra 1 is taken after 2010-2011 (or earn a comparative score) in order to graduate with a Standard High School Diploma</li> <li>Industry certification that leads to college credit may substitute for up to 2.0 mathematics credits (except for Algebra 1 and Geometry)</li> </ul>	
<b>Science</b>	<ul style="list-style-type: none"> <li>3.0 credits in science must include either               <ul style="list-style-type: none"> <li>Sequence A: 1.0 credit each in Biology, Chemistry, and Physics (strongly recommended), OR</li> <li>Sequence B: 1.0 credit each in Integrated 1, 2, 3 (ending with the graduating class of 2020) OR</li> <li>Sequence C: 1.0 credit each in Physical Science, Biology and Equally Rigorous Science course (beginning with the graduating class of 2020) Sequence C NOTE: Graduating classes of 2020 and 2021 only – Integrated 1 will count as the Physical Science needed for graduation.</li> </ul> </li> <li>Industry certification that leads to college credit may substitute for up to 1.0 science credit (except for Biology).</li> </ul>	
<b>Students must complete 4.0 Science credits OR 4.0 Social Studies credits</b>		
<b>Social Studies</b>	<ul style="list-style-type: none"> <li>3.0 credits in social studies must include:               <ul style="list-style-type: none"> <li>1.0 credit in World History</li> <li>1.0 credit in U.S. History</li> <li>0.5 credit in U.S. Government</li> <li>0.5 credit in Economics with Financial Literacy</li> </ul> </li> </ul>	
<b>World Languages</b>	2.0 sequential credits in the same language are required for admission into Florida state universities and for Bright Futures' eligibility. Many competitive schools (in state and out-of-state) require 3-4 credits of World Language.	
<b>Performing Fine Arts</b>	1.0 credit in fine or performing arts, speech and debate or practical arts (eligible courses specified in the Florida Course Code Directory)	
<b>Physical Education</b>	1.0 credit in Health Opportunities for Physical Education (HOPE), which includes	
<b>Career Research and Decision Making</b>	0.5 credit (the course also satisfies the requirements of Statute 1003.42(2)(s) for Character Development Curriculum)	
<b>Electives</b>	8.5 credits (12.5 credits block schools)	
<b>Online Course</b>	1 course within the 26 credits	

<b>Subject Area</b>		<b>26-Credit Graduation Requirements (30-Credits Block Schools)</b>	
<b>Grade Point Average (GPA)</b>	Cumulative GPA of 2.0 on a 4.0 scale		
<b>Rigorous Course Requirements</b>	<p><b>Students will be required to complete a program of study in at least one of the following areas:</b></p> <ul style="list-style-type: none"> <li>• 3.0 credits in any combination of approved Dual Enrollment (DE), Advanced Placement (AP), International Baccalaureate (IB), Advanced International Certificate of Education (AICE), or approved Honors courses, OR</li> <li>• 3.0 or more credits in a Career &amp; Technical Education Program of Study which will be used to complete a sequential career and technical education program resulting in a credential endorsed by a national, state, or local industry, OR</li> <li>• 4.0 or more credits in sequential Performing Fine Arts courses that lead to College and/or Career Readiness</li> </ul>		
<b>OPTIONAL Designations</b>	Requirements for the Scholar and Merit Designations are in addition to requirements for the Standard 26-Credit High School Diploma.		
<b>Scholar Diploma Designations</b>			
<b>Scholar Designation</b>	<p><b>In addition to meeting the standard high school diploma requirements:</b></p> <ul style="list-style-type: none"> <li>• Pass Geometry EOC (beginning with the graduating class of 2018)</li> <li>• Earn 1 credit in Algebra 2</li> <li>• Earn 1 credit in Statistics or an equally rigorous mathematics course</li> <li>• Pass the Biology 1 EOC</li> <li>• Earn 1 credit in Chemistry or Physics</li> <li>• Earn 1 credit in a course equally rigorous to Chemistry or Physics (any EQ Science course)</li> <li>• Pass the U.S. History EOC</li> <li>• Earn n 2 credits in the same World Language</li> <li>• Earn at least 1 credit in AP, IB, AICE, or a dual enrollment course.</li> </ul> <p>A student is exempt from taking the Biology 1 or U.S. History EOC if the student is enrolled in an AP, IB, or AICE Biology 1 or U.S. History course and the student earns the minimum score to earn college credit on the respective AP, IB or AICE assessment.</p>		
<b>Merit Designation</b>	<p><b>In addition to meeting the Standard High School Diploma requirements:</b></p> <ul style="list-style-type: none"> <li>• Attain one or more industry certifications from the list established (per s. 1003.492, F.S.).</li> </ul>		

**NOTES:**

- The following courses include EOC assessments which count as 30% of the Final Course Grade: Algebra 1, Geometry, Biology, and U.S. History.
- Based on individual student needs, the 4th additional science credit may be chosen from any EQ Science or Non-EQ Science course
- Participation in a FHSAA interscholastic sport at the junior varsity or varsity level for two full seasons shall satisfy the one-credit requirement in HOPE.
- Completion of two years in a Reserved Officer Training Corps (R.O.T.C) class shall satisfy the 1.0 credit requirement in HOPE AND the 1.0 credit requirement in performing fine arts.
- The number of credits required for graduation for students who enter a block schedule school from a non-block school will be decreased by 0.5 credits for each semester the student was in a non-block school.
- The Credit Acceleration Program (CAP) - allows a student to earn high school credit if the student passes an advanced placement (AP) examination, a College Level Examination Program (CLEP) or a statewide course assessment without enrollment in the course.

# WHAT STUDENTS AND PARENTS NEED TO KNOW

## Online Course Requirement

**A student may satisfy the online course graduation requirement by:**

- Completion of an online high school level course taken in grades 6 through grade 12, OR
- Completion of a course in which a student earns a nationally recognized Industry Certification in Information Technology that is identified on the CAPE Industry Certification Funding List, OR
- Passage of the Information Technology Certification examination with or without enrollment in or completion of the corresponding course or courses, as applicable.

**The online requirement does not apply to:**

- A student who has an individual education plan which indicates that an online course would be inappropriate OR
- An out-of-state transfer student who is enrolled in a Florida high school and has 1 academic year or less remaining in high school.

## Florida Seal of Biliteracy Program

The Florida Seal of Biliteracy Program is established to recognize a high school graduate who has attained a high level of competency in listening, speaking, reading, and writing in one or more world languages in addition to English. Beginning with the 2016-2017 school year, the Gold Seal of Biliteracy or the Silver Seal of Biliteracy must be awarded to a high school student who has earned a standard high school diploma and who has:

- Earned 4 world language course credits in the same world language with a cumulative 3.0 GPA or higher,
- Achieved a qualifying score on a world language assessment, OR
- Satisfied alternative requirements as determined by the State Board of Education.

## Can a student graduate Early?

Yes, a student who completes all the program requirements for a standard diploma may graduate in fewer than eight semesters.

## What are the Public Postsecondary Options?

### STATE UNIVERSITY SYSTEM

Admission into Florida's public universities is competitive. Prospective students should complete a rigorous curriculum in high school and apply to more than one university to increase their chance for acceptance. To qualify to enter one of Florida's public universities, a first-time-in-college student must meet the following minimum requirements:

- High school graduation with a standard diploma
- Admission test scores
- 16 Credits of approved college preparatory academic courses
  - 4 English
  - 4 Mathematics (Algebra I level and above)
  - 3 Science
  - 3 Social Science
  - 2 World Language (sequential, in the same language)
- 2 approved electives

<http://www.flbog.edu/forstudents/planning>

### THE FLORIDA COLLEGE SYSTEM

The 28 state colleges offer career-related certificates and two-year associate degrees that prepare students to transfer to a bachelor's degree program or to enter jobs requiring specific skills. Many also offer baccalaureate degrees in high-demand fields. Florida College System institutions have an open door policy. This means that students who have earned a standard high school diploma, have earned a high school equivalency diploma or have demonstrated success in postsecondary coursework will be admitted to an associate degree program.

<http://www.fldoe.org/schools/higher-ed/fl-college-system/index.stml>

### CAREER AND TECHNICAL CENTERS

Florida also offers students 48 accredited career and technical centers throughout the state, which provide the education and certification necessary to work in a particular career or technical field. Programs are flexible for students and provide industry-specific education and training for a wide variety of occupations.

<http://www.fldoe.org/academics/career-adult-edu/dist-ps-instit.stml>

# WHAT STUDENTS AND PARENTS NEED TO KNOW

## What are the graduation requirements for students with disabilities?

Two options are available only to students with disabilities. Both require the 26 credits listed and both allow students to substitute a career and technical (CTE) course with related content for one credit in ELA IV, mathematics, science and social studies (excluding Algebra I, Geometry, Biology I and U.S. History).

- Students with significant cognitive disabilities may earn credits via access courses and be assessed via an alternate assessment.
- Students who choose the academic and employment option must earn at least 0.5 credit via paid employment.

## Where is information on the Bright Futures Scholarships located?

The Florida Bright Futures Scholarship Program rewards students for their academic achievements during high school by providing funding to attend a postsecondary institution in Florida. For more information, visit:

<http://www.floridastudentfinancialaid.org/SSFAD/bf/>.

## Where is information on financial aid located?

The Office of Student Financial Assistance State Programs administers a variety of postsecondary educational state-funded grants and scholarships. To learn more, visit:

<http://www.floridastudentfinancialaid.org/>.

## BREVARD ADULT EDUCATION

### Your Future Awaits



#### Offering

- GED/High School Diploma
- English for Speakers of other Languages (ESOL)
- Automotive and pre-apprenticeship programs
- Workforce readiness
- Lifelong learning classes



@BrevardAdultEd

call 321-633-3662

[www.brevardadulsted.com](http://www.brevardadulsted.com)



## The Brevard Schools Foundation



Brevard Schools Foundation fills educational funding and opportunity gaps at all of our 84 public schools for more than 70,000 students and some 4,400 teachers by supporting innovation, engaging communities and changing lives.

Brevard Schools Foundation has provided over \$53 million in support to Brevard Public Schools since 1987 and is consistently ranked among the top education foundation in the United States.

### Programs of Brevard Schools Foundation include:

- **Supply Zone for Teachers** – getting free school supplies to where they're needed most
- **Take Stock in Children** – providing drop-out prevention services for our most vulnerable youth
- **Bright Ideas Classroom Grants** – funding creative and innovative classroom projects
- **Scholarships for Graduating Seniors** – making college more affordable and accessible
- **Annual ABC Awards** – applauding excellence in education
- Direct support to schools, and much, much more

For volunteer opportunities or to learn more about their mission, please visit <http://www.brevardschoolsfoundation.org>, or contact the Foundation's team or President and CEO Janice Kershaw at (321) 633-1000 ext. 11756.

## Volunteering with Brevard Public Schools

To volunteer at a district school, you must first complete an online application and proceed to the Office of District & School Security to complete the fingerprinting and payment process. All volunteers are subject to a background check by the [Office of District & School Security](#).

For additional information, visit the [District & School Security](#) section of the BPS website, or contact (321) 633-1000 ext. 11233 or [districtsecurity@brevardschools.org](mailto:districtsecurity@brevardschools.org).

## Parent Leadership Team

BPS' Parent Leadership Team is made up of parents representing each school throughout our county and provides a unique opportunity to join together with district personnel to participate in regular meetings covering a wide variety of educational issues. These parent leaders gather information, ask questions, share thoughts and/or concerns, provide feedback to district personnel and then share what they have learned with other parents and staff at their schools. These meetings serve as a valuable tool for maintaining regular two-way communication between the school district and parents at each of our schools throughout the school year. Each school is asked to send at least one parent representatives to these meetings.

For more information, visit the [Parent Leadership Team](#) section of the website or contact (321) 633-1000 ext. 11389 or ext. 11336.

# Family Engagement

The child's first and most important teacher is the parent. Brevard Public Schools recognizes that a child's education is a responsibility shared by the school and family. Part of the district's plan to help each student reach their maximum potential requires parents to be informed and involved, and for schools and parents to work together as knowledgeable partners.

## To support this partnership, the district:

- provides a framework for building and strengthening partnerships among parents and schools
- supports professional development opportunities for staff members to enhance understanding of effective parent involvement strategies

- recognizes the importance of administrative leadership in setting expectations and creating a climate conducive to parental and family participation
- supports the development, implementation, and regular evaluation of a program to involve parents in the decisions and practices of the school district

For more information, visit the [Family Engagement](#) section of the BPS website or contact (321) 633-1000 ext. 11389 or ext. 11336.

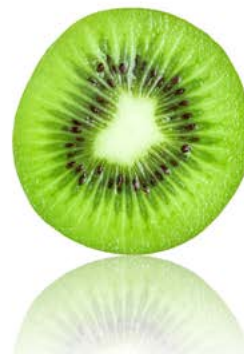
# Food and Nutrition Services—Fueling the Future

## Food & Nutrition SERVICES

Brevard Public Schools Office of Food and Nutrition Services (FNS) serves over 21,400 breakfasts and 33,900 lunches each day! During the 2018-19 year, more than 3.8 million breakfasts and 6.1 million lunches

were served to our students. FNS has participated in the Provision 2 Breakfast Program since 2001-02 which enables us to provide a no-cost breakfast to all students. All meals are planned by a registered dietitian and meet USDA standards. Students are offered a variety of food choices including entrée salads and vegetarian options.

For information about free and reduced lunch, meal payment, nutrition and more, visit the [Food and Nutrition Services](#) section of the BPS website or call (321) 633-1000 ext. 11690.



# REDDICK

ORTHODONTICS

Dr. Chad R. Reddick



**(321) 254-5232**

[www.MelbourneOrthodontics.com](http://www.MelbourneOrthodontics.com)

- Quality, affordable treatment
- No interest financing
- Free consultations
- Insurance accepted
- Clear and Metal braces
- Invisalign®

## Two convenient locations to serve you:

22 Nelson Avenue  
Melbourne

1433 South Patrick Drive  
Indian Harbour Beach

BREVARD

# After School!

art • wellness • games • STEM • music • nature • dance



**Serving children  
who are  
registered in  
Kindergarten  
through 6th  
Grade at each  
elementary  
school.**

Join our community on social media  
by liking and following us at:

 Facebook: /BrevardAfterSchool

 Twitter: /BrevAfterschool

District Phone 321-633-3660 Ext. 31469

For more information visit our Website [www.brevardafterschool.com](http://www.brevardafterschool.com)



# Opt-Out Directory Provision

Brevard Public Schools has a policy to safeguard students' directory information from being released to commercial entities, non-profit agencies or individuals. This information includes student:

- date of graduation or program completion
- date and place of birth
- names
- addresses
- phone numbers
- participation in school activities and sports
- honors and awards
- height and weight of athletic team members
- dates of attendance

The district takes the responsibility of safeguarding your child's school records very seriously and follows state and federal regulations regarding the release of such information. "Directory Information," as defined by the Family Educational Rights and Privacy Act (FERPA), allows the disclosure of certain student information including names and addresses, without prior written consent, unless a parent has opted out. The primary purpose of directory information is to allow the district to include this type of information from your child's records in certain school publications. Examples include graduation lists, recognition lists, sports activity sheets and playbills.

In accordance with School Board Policy 8330, if you do not want BPS to disclose your child's allowable directory information, without your prior written consent, you must notify the district in writing. The opt-out form is available at your child's school.



## Parent University

Parent University provides BPS parents and caregivers training, resources and access to skills and services which grow, achieve and empower greater levels of advocacy for children, schools and community. More importantly, Parent University empowers families to navigate multiple roles as partners in their children's education.

For more information, visit the [Parent Leadership Team](#) section of the website or contact (321) 633-1000 ext. 11389 or ext. 11336.

FOR YOUR 21ST CENTURY CHILD!

**ADVANTAGE U LEARNING**

**One-on-One Tutoring & Test Prep**  
*All Grades & Subjects*

Free Assessments • No Contracts

**\$10 Off**  
1st Session  
WITH THIS AD

**321-253-9499**

3199 Suntree Blvd., #5 • Rockledge, FL 32955  
[www.advantagelearning.com](http://www.advantagelearning.com)

# English for Speakers of Other Language (ESOL)

## Identification and placement

All parents complete a Home Language Survey (HLS) during registration. If a parent indicates that another language is spoken at home, schools administer a comprehensive English language proficiency screener to determine whether that language has impacted the student's proficiency in English. Designated as English Language Learners (ELLs), students who meet eligibility for the program are placed in appropriate grades and courses with highly qualified ESOL-endorsed or board-approved teachers.

## Instructional model

The primary instructional model for Brevard is a mainstream inclusion model in which instruction is delivered through the use of ESOL strategies, supports and accommodations. English-sheltered classes are also available at secondary schools with a large ELL population. These are English courses for ESOL students only.

As mandated by the Florida Consent Decree, classroom teachers provide understandable and differentiated instruction in a manner appropriate to an ELL's level of English proficiency. The language proficiency of an ELL is taken into consideration during lesson planning, instruction, assessment as well as grading.

## Supplemental assistance

Through district funding and Title III, the following supports and resources are available for ELLs throughout the district:

- ESOL-itinerant teachers for supplemental academic support and monitoring in non-staffed schools
- a bilingual assistant for any school with an enrollment of 15 ELL of the same home language
- an ESOL teacher for any school with an enrollment of 50 ELL students
- an ESOL parent liaison for parent engagement and community outreach programs
- quality professional development for instructional staff and ESOL contacts
- supplemental online programs for language acquisition
- supplemental classroom materials
- ESOL tutoring
- Summer programs

## Progress monitoring

School principals designate an ESOL contact at their respective sites to serve as a district and school liaison to ESOL parents. The ESOL contact ensures school compliance. Through the ELL Committee,



the ESOL contact monitors student progress, conducts regular periodical reviews, coordinates classroom supports and ensures parent participation in academic decisions. ESOL students are included in all of Brevard's assessments using approved testing accommodations.

In addition, all ELLs participate in the spring administration of Access for ELLs 2.0 for English Language Proficiency monitoring.

### Tips for parents

We encourage ESOL parents to advocate for their students by:

- knowing their rights
- requesting information in their home language whenever feasible
- identifying and communicating with the school's ESOL contact as needed
- having access to online tools for continuous monitoring and instant translation
- participating actively in the various school/district procedures and events
- verifying their student participation to the available supplemental resources
- talking to their ELL students regularly about school, their classroom, teachers and friends

### Additional resources

#### BPS – ESOL Portal

<https://www.brevardschools.org/Domain/2185>

#### Colorin Colorado

<http://www.colorincolorado.org/>

#### Elementary Programs

<http://elementarypgms.sp.brevardschools.org/Home/default.aspx>

#### ESE (Exceptional Student Education)

[http://ese2.brevardschools.org/\\_layouts/15/start.aspx#/](http://ese2.brevardschools.org/_layouts/15/start.aspx#/)

#### Equity, Innovation, & Choice Department

<http://schoolchoice.brevard.k12.fl.us/>

#### FDLRS (Florida Diagnostic & Learning Resource System)

<http://fdlrs.brevard.k12.fl.us/east/index.htm>

#### Secondary Leading and Learning Programs

[http://www.edline.net/pages/Brevard\\_County\\_Schools/Departments/Departments\\_K-Z/Secondary\\_Office\\_of\\_Leading\\_an](http://www.edline.net/pages/Brevard_County_Schools/Departments/Departments_K-Z/Secondary_Office_of_Leading_an)

#### Title I

<https://www.brevardschools.org/Domain/2192>

## A decade of helping kids find the superhero within

The Scott Center offers assessment, diagnosis and early behavioral intervention of:

- Severe Behavior
- Feeding Disorders
- Social Skills
- Speech Therapy
- Community Psychological Services

Learn more at  
[thescottcenter.org](http://thescottcenter.org)



# Information Rights of Parents

Every parent has the right to request information about the professional qualifications of the student's teacher(s) and any teacher assistants who serve the student. This information will be provided by the administrative office at the child's school upon request.

No Child Left Behind (federal education law) requires us to notify the parent when a teacher who is not qualified teaches your child for four consecutive weeks. If this occurs, your child's school will send home a

letter giving you information regarding your child's teacher.

No Child Left Behind states that the district and each school receiving Title I, Part A funds must develop a Parent and Family Engagement Plan (PFEP). The plans will be summarized in brochures printed in English and Spanish and distributed to all parents of impacted students. Information about PFEPs and Title 1 can be found in the [Title I](#) section of the BPS website or by calling (321) 633-1000 ext. 11336.

## Title I

Title I is a federally-funded program designed to improve achievement at schools with a high percentage of students eligible for free and reduced priced lunches. To qualify for school wide program status, a school must meet the criteria of a free and reduced lunch percentage of 63 percent or higher for elementary schools, and 74 percent or higher for secondary. The Title I project serves 40 Brevard Public School sites.

Title I provides support through district resources and researched-based trainings, enabling schools to develop high quality, enriched programs that meet the individual needs of all children, families, and staff.

By providing a positive, caring environment with high educational expectation, Title I ensures that all individuals feel capable, connected,

and able to make worthwhile contributions to their community.

### Coordination with other agencies:

Title I coordinates services with other agencies throughout Brevard County. These agencies include Brevard Zoo, Eastern Florida State College, Head Start, Adult Education, PREVENT!, Juvenile Justice, Rolling Readers, University of Central Florida, English for Speakers of Other Languages, and for homeless students and their families.

For more information, visit the [Title I](#) section of the website or contact (321) 633-1000 ext. 11350..

### Title I schools:

Alternative Learning Centers  
(north, central, south)  
Apollo Elementary  
Atlantis Elementary  
Audubon Elementary  
Cambridge Elementary Magnet  
Cape View Elementary  
Challenger 7 Elementary  
Columbia Elementary  
Coquina Elementary  
Croton Elementary  
Creel Elementary  
Cocoa High  
Discovery Elementary  
Emma Jewel Charter Academy  
Endeavour Elementary  
Fairglen Elementary  
Fieldston Preparatory  
Golfview Elementary Magnet  
Harbor City Elementary  
Imagine Schools at  
West Melbourne

Imperial Estates Elementary  
Jupiter Elementary  
Lockmar Elementary  
Madison Middle  
McAuliffe Elementary  
MILA Elementary  
Mims Elementary  
Oak Park Elementary  
Odyssey Preparatory Charter  
Academy  
Palm Bay Academy Charter  
Palm Bay Elementary  
Pinewood Elementary  
Port Malabar Elementary  
Riverdale Elementary/Country  
School  
Riviera Elementary  
Roy Allen Elementary  
Royal Palm Charter  
Sabal Elementary  
Saturn Elementary  
Sherwood Elementary

Southwest Middle  
Sunrise Elementary  
Turner Elementary  
University Park Elementary  
Westside Elementary



# BPS BY THE NUMBERS

**NUMBER OF SCHOOLS: 84**

**TEACHERS: 4,400+**

TOTAL EMPLOYEES: 9,362

**NEW TEACHERS: 350**



**Elementary: 56**

**Middle: 11**

**Jr./Sr. High: 5**

**High: 11**

**Online: 1**

**70% OF SCHOOLS ARE "A" OR "B" RATED.**

**0 "D" OR FAILING SCHOOLS**

**6 NATIONAL BLUE RIBBON SCHOOLS**

**2 HIGH SCHOOLS RANKED IN TOP 10 IN THE NATION**

*by U.S. News & World Report (West Shore Jr./Sr. High (#70) and Edgewood Jr./Sr. High (#71)).*

**#1 RATED ELEMENTARY SCHOOL IN THE STATE**

**9TH LARGEST SCHOOL DISTRICT IN THE STATE**

**#1 IN FLORIDA AMONG DISTRICTS OUR SIZE OR LARGER**



**46 YEARS IS THE AVERAGE AGE OF DISTRICT BUILDINGS**

**FREE AND REDUCED LUNCH 48.67%**



**STUDENTS: 68,879**

**SENIOR CLASS: APPROX. 5,500**  
**INCOMING KINDERGARTEN CLASS: APPROX. 5,000**

**BUS RIDERS: APPROX. 23,000**

**MILES TRAVELED DAILY STOPS PER DAY**



Nearly one quarter of the more than 70,000 students in Brevard public schools attended a campus other than their neighborhood school in 2018-2019. Their choices:

- School in attendance boundary: 75.1%
- BPS schools of choice (does not include magnets): 4.91%
- Charter schools: 9.24%

**12,116,819**

SQUARE FEET OF FACILITIES



## TECHNOLOGY



**Desktop Computers 43,000**



**Tablet Computers 26,000**



**Laptop Computers 8,000**

# INTRODUCING THE FORTIFYFL APP

## SUSPICIOUS ACTIVITY REPORTING APP

FortifyFL is a suspicious activity reporting tool that allows you to instantly relay information to appropriate law enforcement agencies and school officials.

Submit A  
Tip Online



Download on the  
App Store



GET IT ON  
Google Play

### Quickly Sends To Authorities

FortifyFL automatically routes your tip report to the appropriate law enforcement agencies and school officials.



#### Your School Officials

The tip report goes to your local school officials when submitted.



#### Local Law Enforcement

Your local police department or sheriff office receive copies of your tips automatically.



#### State-Level Officials

State-level officials also have access to your tips to make sure proper steps are taken.

## QUICK AND EASY SAFETY TIP SUBMISSION

By accessing FortifyFL, students can provide a description of the threat, share pics and videos and optionally submit their contact information.



## EASY TIP SUBMISSION

Follow the easy 4-step process to submit a tip. Your name and contact information is always optional, just skip it to submit anonymously.

You can access your previous tips, and submit updates and additional information.

## COORDINATED DEVELOPMENT

FortifyFL was created and funded by the 2018 Florida Legislature as part of the Marjory Stoneman Douglas High School Public Safety Act. The application was named by students from Marjory Stoneman Douglas High School. The Office of Attorney General, Department of Education and Florida Department of Law Enforcement coordinated its development and roll-out.



THOUSANDS OF SCHOOLS



MILLIONS OF STUDENTS



ONE MISSION

# FLORIDA PREP

Founded 1961



## Small Class Size

An average class size of only 13 students.

## State & Private Scholarships

FL Step-Up, Hope, and Private Academic scholarships available.



## Dual Enrollment

At Florida Tech & Eastern Florida State College.



# CONSIDER THE ALTERNATIVE!

## Certified Teaching Staff

58% of our faculty hold a Master's degree of higher. All are certified to teach in Florida.



Selected Classes Open to **Home Schooled** Students.



## Open to Boys & Girls in Grades 5-12

Students From 22 Countries!





# TO WHOM IT MAY CONCERN

How and to whom to communicate positive feedback, questions or concerns...  
(Unless otherwise indicated, all extensions are for 321- 633-1000)

## Your Child (e.g. instruction or behavior)

- Teacher ♦ Phone ♦ Email ♦ Meeting or Conference

School Related Issue (e.g. school operations or issues not resolved at classroom level)

- School Office or Administration ♦ Phone ♦ Meeting or Conference ♦ Email

## District-Related Issues (e.g. department or program issue)

### Leading and Learning

- ♦ Early Childhood x 11340
- ♦ Head Start, Title I, 617-7776 x 11350
- ♦ Elementary Leading and Learning- x 11411
- ♦ Secondary Leading & Learning - x 11300
- ♦ Career and Technical Education – x 11380
- ♦ Virtual Instruction – 633-3660, x 11223

Customer Care, x 11500

- Superintendent ♦ Phone – 633-1000

Assistant superintendent – Secondary schools: x11300  
Assistant superintendent – Elementary schools: x11411

### Student Services

- ♦ Child Find (testing 3 & 4 yr. olds), x 11552
- ♦ Exceptional Student Education, IEPs, x 11505
- ♦ Instructional, Behavioral & Psychological Services, x 11520
- ♦ Home Education, x 11528

Assist. Supt. Student Services, x 11270

### School Board Members

- Misty Belford (Dist. 1) ♦ Phone – 321-591-9387
- Cheryl McDougall (Dist. 2) ♦ Phone – 321-987-6382
- Tina Descovich (Dist. 3) ♦ Phone – 321-848-5478
- Matt Susin (Dist. 4) ♦ Phone – 321-684-9735
- Katy Campbell (Dist. 5) ♦ Phone – 321-271-9946
- Email (applies to all)  
Lastname.firstname@brevardschools.org
- US Mail – 2700 Judge Fran Jamieson Way  
Viera, FL 32940-6601

### Government and Community Relations

- ♦ Customer Care, x 11500 ♦ Transcripts x 11777,
- ♦ Public Records, x 11453 ♦ Media & Pub. x11778,
- ♦ Legacy, x 11644 ♦ Partners in Education, x 11529

Asst. Sup., Government and Community Relations, x 11796

### Equity, Innovation and Choice

- ♦ ELO, EPO, Charter, Magnet, IB x 11395
- ♦ Adult Education – 633-3660, x 118
- ♦ Brevard After School – 321-633-3660 ext. 11111

Asst. Sup., Equity, Innovation and Choice, x 11395

### Transportation

- ♦ North Area – 269-2055; Central Area – 633-3680
- ♦ Mid-South – 242-6497; South Area – 727-2070

Director, Transportation – 633-3680

### Human Resources

- ♦ Application Intake, x 11225, 11227, 11232
- ♦ Employment – www.brevardschools.org

Deputy Supt. Human Resources , x 11200



# peachjar Connecting Parents to the Community

Peachjar removes the clutter from your child's backpack to an electronic format found in the district's mobile app or web. Stay informed about events and opportunities impacting your student and school.

### Benefits:

- Keeps you informed of school and community activities
- Easy digital communication
- Simple "Sign-Up Now" Feature

### How do I get started?

You will receive a welcome email that includes a username and password with which you can manage your account and flyer delivery preferences.



## You can find

Brevard County School District

## in the app store.

Download the official **Brevard County School District app** today for access to your school's news, calendars, push notifications, and much more!



Blackboard



## ANTI-HARASSMENT AND NONDISCRIMINATION NOTICE

The School Board of Brevard County, Florida does not discriminate on the basis of race, color, national origin, sex (including sexual orientation, transgender status, or gender identity), disability (including HIV, AIDS, or sickle cell trait), pregnancy, marital status, age (except as authorized by law), religion, military status, ancestry, or genetic information or any other factor protected under applicable federal, state, or local law. The district also provides equal access to its facilities to youth groups, as required by the Boy Scouts of America Equal Access Act. The School Board of Brevard County is in compliance with the Americans with Disabilities Act of 1990 (ADA) and the Amendment Act of 2008 (ADAA), the Florida Education Equity Act of 1984, Age Discrimination Act of 1967 and Section 504 of the Rehabilitation Act of 1973, Civil Rights Act of 1964 including: Title II, Title VI, and Title VII, United States Education Amendments of 1972 - Title IX, Age Discrimination in Employment Act (ADEA), and Individuals with Disabilities Act (IDEA). Questions, complaints, or concerns with any of the above should be reported to either of the Anti-Harassment Compliance Officers listed below for proper assistance and handling. For concerns involving:

### **Students, Exceptional Education/504, Title IX, or the Public contact:**

Assistant Superintendent of Equity, Innovation, and Choice  
2700 Judge Fran Jamieson Way Melbourne, FL 32940  
(321) 633-1000, Ext. 11500

### **Employees or Job Applicants contact:**

Director of Human Resources & Labor Relations  
2700 Judge Fran Jamieson Way Melbourne, FL 32940  
(321) 633-1000, Ext. 11265

Reasonable accommodations are available for persons with disabilities to complete the application and/or interview process. Applicants and/or individuals with disabilities requesting accommodations under the Americans with Disabilities Act (ADA) may contact the Director of Human Resources & Labor Relations for assistance. Inquiries concerning Title IX may be referred to the Assistant Superintendent of Equity, Innovation, and Choice as listed above for assistance or the Office of Civil Rights. This publication or portions of this publication can be made available to persons with disabilities in a variety of formats, including large print, braille or audiotape. Telephone or written requests should include your name, address, and telephone number. Requests should be made to the Office of Exceptional Education Projects, (321) 633-1000, ext. 11535, at least two (2) weeks prior to the time you need the publication.



# VIERA

PEDIATRIC DENTISTRY



## our office

From the waiting area, kid-friendly restrooms, to the exam rooms - our space is welcoming and offers kids and their parents an easy-going experience while receiving the highest standard of care.



## our team

We are in the practice of smiles and specially trained in pediatric dentistry which is our passion. We work with families to build trust and ensure your are in the most qualified hands.



## our approach

Our patient-focused care instills healthy behaviors from the first appointment so they can benefit from a lifetime of excellent oral health and look forward to going to the dentist.

CARING.  
PASSIONATE.  
EXPERIENCED.

now accepting new patients!

# 321-417-0107

[www.vierapd.com](http://www.vierapd.com)

5600 Porada Drive, Suite 102

Viera, FL 32940

[info@vierapd.com](mailto:info@vierapd.com)

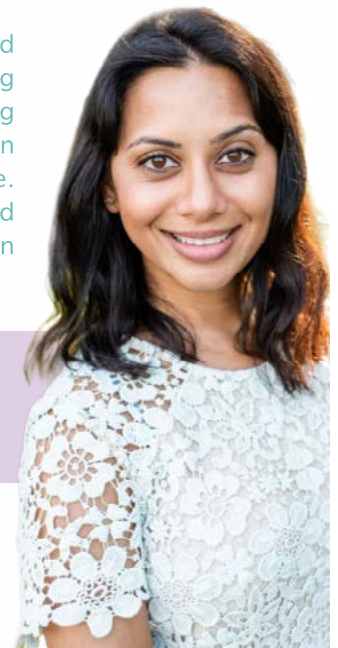


## ★ ★ ★ ★ ★ Patient Review:

"I would highly recommend Dr. Patel to anyone looking for a patient, kind and caring pediatric dentist! My children loved the office atmosphere. The staff were wonderful and Dr. Patel was so gentle. We can not wait for our next visit!"

**Dr. Yoshita Patel**

board certified pediatric dentist





**Health  
First**  
Women & Children

## Improving Wellness and Health of Women & Children in Brevard

Health First Women & Children provides a comprehensive care network of **excellence** for women of all ages and children from conception to adolescence. Our specialized team of experts is here for you.

- **Gynecology**
- **Obstetrics**
- **Pediatrics**
- **Urogynecology**

To schedule your appointment,  
visit [HF.org/womenandchildren](https://www.healthfirst.org/womenandchildren)  
or call **321.434.3131**



Wishing  
You a  
Brilliant  
Year

Violette,  
Brilliant Smiles Orthodontics'  
Teaching Tooth Fairy

Brilliant Smiles Orthodontics



Brilliant Smiles  
is a Proud Supporter of

ROMIA C. GOFF, DMD, CAGS

321-779-0000

[www.brilliant-smiles-orthodontics.com](http://www.brilliant-smiles-orthodontics.com)



Offices in Titusville Merritt Island Satellite Beach Melbourne Palm Bay