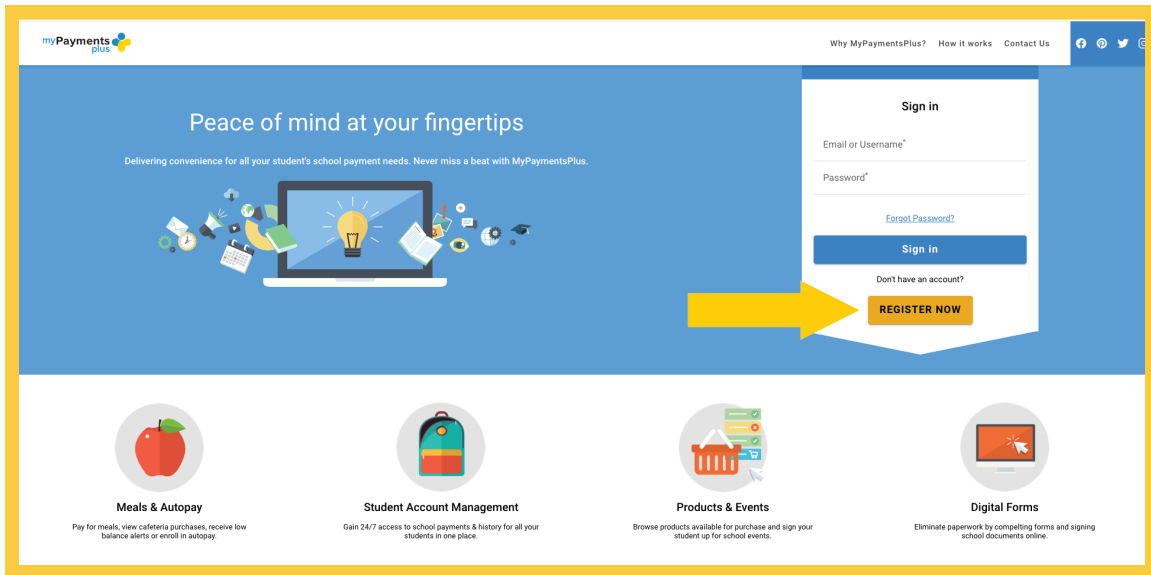
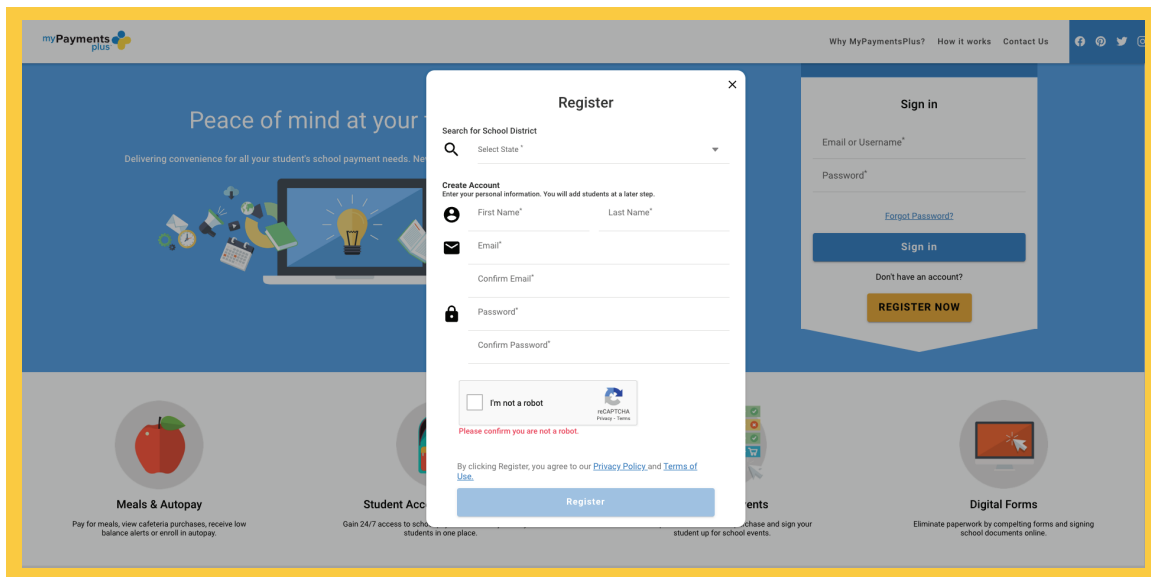


# Getting Started With MyPaymentsPlus

Step 1: Visit [www.mypaymentsplus.com](http://www.mypaymentsplus.com) and click [Register Now](#).



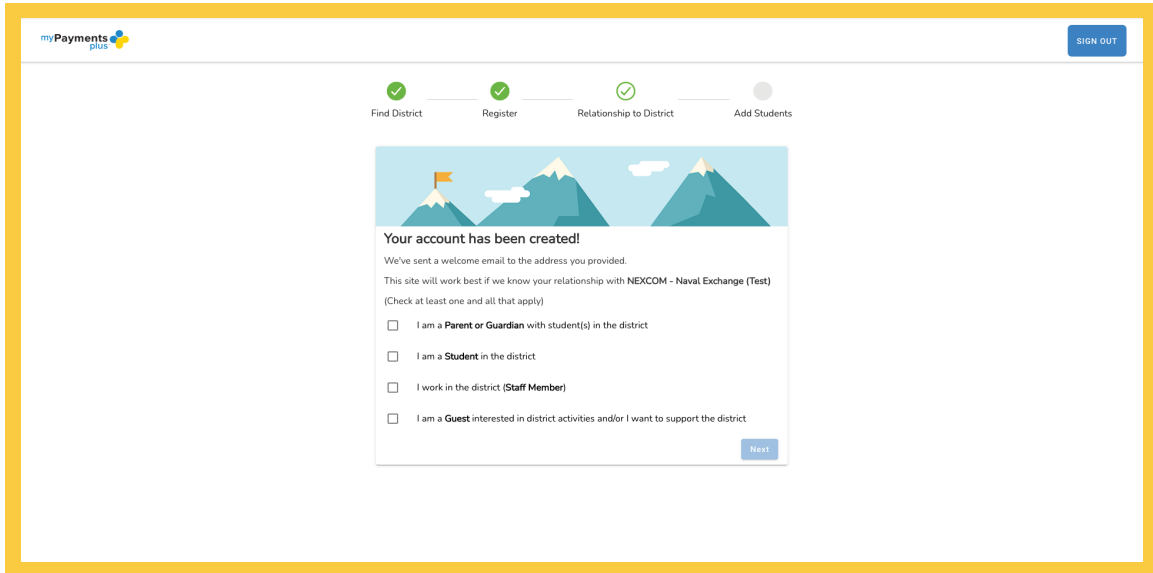
Step 2: Select your [state](#) and [school district](#) from the drop-down menu. Enter your personal information and click [Register](#).



USE OUR LIVE CHAT OPTION!

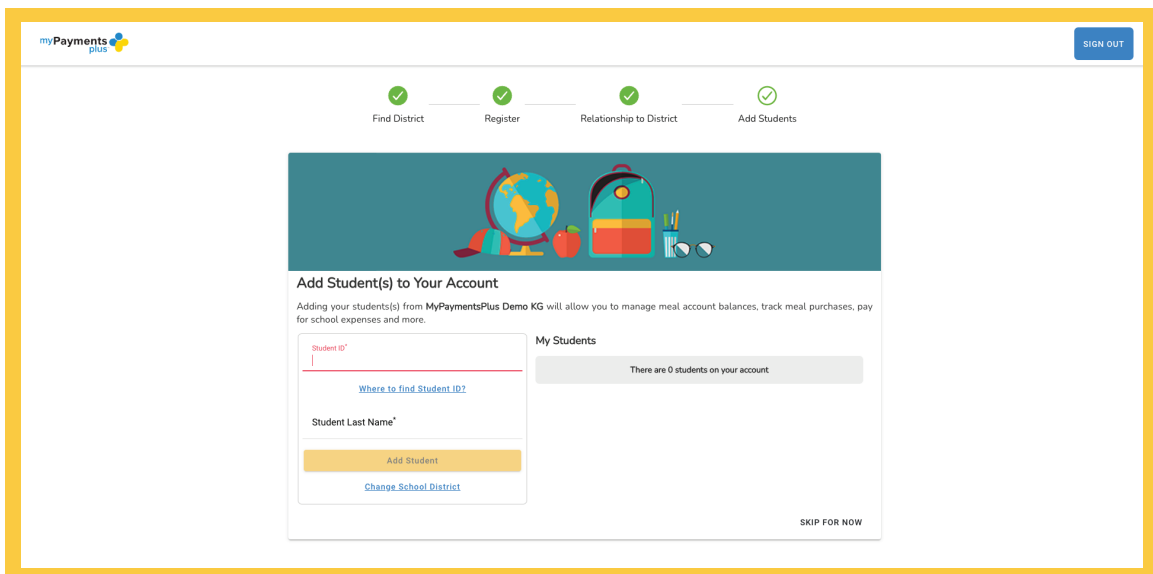
Need Support? Reach out to Us! Parent Phone Support: 877.237.0946 | Parent Email Support: [Support@MyPaymentsPlus.com](mailto:Support@MyPaymentsPlus.com)

Step 3: Select the appropriate option and click **Next**.



The screenshot shows the registration process at the 'Relationship to District' step. A progress bar at the top indicates that 'Find District', 'Register', and 'Relationship to District' are completed, while 'Add Students' is pending. The main content area features a message: 'Your account has been created! We've sent a welcome email to the address you provided. This site will work best if we know your relationship with NEXCOM - Naval Exchange (Test) (Check at least one and all that apply)'. Below this are four radio button options: 'I am a Parent or Guardian with student(s) in the district', 'I am a Student in the district', 'I work in the district (Staff Member)', and 'I am a Guest interested in district activities and/or I want to support the district'. A 'Next' button is located at the bottom right of the form.

Step 4: Using their ID number and last name, add student(s) to your account and click **Done**.



The screenshot shows the 'Add Student(s) to Your Account' step. The progress bar at the top now shows all four steps: 'Find District', 'Register', 'Relationship to District', and 'Add Students' as completed. The main content area has a header with school-related icons and the title 'Add Student(s) to Your Account'. Below the title is a sub-header: 'Adding your student(s) from MyPaymentsPlus Demo KG will allow you to manage meal account balances, track meal purchases, pay for school expenses and more.' There are two input fields: 'Student ID\*' and 'Student Last Name\*'. A link 'Where to find Student ID?' is positioned between the fields. Below the 'Student Last Name\*' field is an 'Add Student' button and a link 'Change School District'. To the right, under the heading 'My Students', there is a grey box stating 'There are 0 students on your account'. A 'SKIP FOR NOW' link is located at the bottom right of the form.

\*The following page does not apply when registering for guest accounts.

USE OUR LIVE CHAT OPTION!