

# Early College Program

A Dual Enrollment Opportunity for  
Motivated High School Students!



# *What is Dual Enrollment?*



**High school students earn high school and college credit at the same time.**

## Part-Time

Up to 3 EFSC classes  
per term and  
1 summer class

## Early College

Up to 3 classes per term  
and 2 summer classes.  
Associate Degree Track.  
Bus available for 10th  
graders

# *Dual Enrollment Options*

## Early Admission

Fall and Spring semester of  
12th grade on EFSC  
campus

## Full-Time

Spring semester of 12th  
grade on EFSC campus

# ***Dual Enrollment Course Weight***

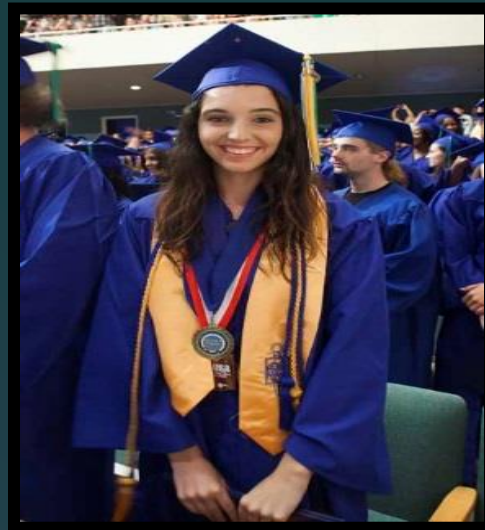
**Dual Enrollment courses are weighted the same as *AP, IB, and AICE*:**

- ▶ When your high school calculates your overall weighted high school GPA
- ▶ When state universities calculate your high school GPA in the core academic classes for university admission decisions

# *Early College Program*

*A partnership initiative between the Brevard  
Public School District and EFSC*

Developed for students whose goal is to graduate from  
high school with an Associate in Arts (A.A.) or  
Associate in Science (A.S.) degree



# *Benefits of Early College Program*

The Early College Program enables students to:

- Complete two years of college with no tuition, textbook costs, or lab fees
- Get used to college expectations while still in high school
- Use their college courses to explore career interests and identify possible majors
- Earn an Associate degree along with their high school diploma

# *Associate in Arts Degree*

- Two-year degree for students whose goal is a bachelor's degree or higher at a state university
- Equivalent to freshman and sophomore years at a state university
- Combination of academic and elective courses chosen to meet selected university major prerequisites
- Total of 20 college courses equaling at least 60 credit hours
- Students graduating with an AA enjoy first-time-in-college (FTIC) benefits at state universities

# *Associate in Science Degree*

- Two-year career education degree to prepare students for direct entry into the workforce
- Combination of general education core courses, major courses, and technical electives
- Typically, a total of of 20 college courses equaling at least 60 credit hours
- Students graduating with an A.S. degree can articulate their degree into a Bachelor's degree



# *Early College Program Expectations*

## **Participants are expected to:**

1. Complete selected EFSC and high school classes each year.
2. Maintain program eligibility.
3. Successfully complete associate degree general education requirements.
4. Finish prerequisite requirements for selected university major or A.S. program major and technical electives.
5. Remain on track for an associate degree by high school graduation.

# Three-Year Track\*

**10<sup>th</sup> Grade .....12 credit hours**

Fall 2 EFSC classes

Spring 2 EFSC classes

**11<sup>th</sup> Grade .....24 credit hours**

Summer 2 EFSC classes

Fall 3 EFSC classes

Spring 3 EFSC classes

**12<sup>th</sup> Grade .....24 credit hours**

Summer 2 EFSC classes

Fall 3 EFSC classes

Spring 3 EFSC classes

\*College credit from AP, AICE, or IB exams may be used to meet degree requirements

# *Two-Year Track\**

**11<sup>th</sup> Grade.....24 credit hours**

Summer 2 EFSC classes

Fall 3 EFSC classes

Spring 3 EFSC classes

**12<sup>th</sup> Grade Early Admission.....36 credit hours**

Summer 2 EFSC classes

Fall 5 EFSC classes

Spring 5 EFSC classes

\*College credit from AP, AICE, or IB exams may be used to meet degree requirements



# Admission Requirements

1. State *cumulative* unweighted high school GPA of 3.0 or higher.
2. College-ready Reading and Writing scores on a college placement test (i.e. PERT, SAT, ACT, PSAT, CLT or ACCUPLACER).
3. High school record of good attendance and responsible behavior.
4. Meet all program deadlines and requirements.
5. Completion of EFSC Dual Enrollment Online Orientation and mandatory In-Person Early College Orientation.
6. Completion of Algebra 1 by the end of 9<sup>th</sup> grade (Two-Year Track) or completion of Geometry by the end of 10<sup>th</sup> grade (Three-Year Track).

# *EFSC Class Times*

## **10th grade students**

- EFSC classes meet 10:50 AM – 12:05 PM
- 1 EFSC class M/W; 1 EFSC class T/Th
- High school periods 3 and 4 at EFSC
- Friday: No EFSC classes – Periods 3 and 4 at the high school for study, community service, and enrichment

## **11th and 12th grade students**

- EFSC classes meet at the beginning and/or end of school day or in the evening
- Face-to-face, online, or hybrid
- Friday attendance at the high school is NOT required during EFSC class periods



# *Bus Transportation*

- ▶ Guaranteed for 10<sup>th</sup> graders in the three-year track during designated Early College class periods
- ▶ 11<sup>th</sup> graders may ride bus if space is available
- ▶ Not provided on BPS school holidays (i.e. President's Day)
- ▶ 11<sup>th</sup> and 12<sup>th</sup> graders responsible for their transportation to and from EFSC



# *Required Minimum Entry Scores*

- ▶ Students must meet the minimum college-ready test scores in Reading and Writing for placement into ENC 1101- Composition 1.
- ▶ Students must meet the meet the minimum college-ready mathematics test score for College Algebra or Topics in Math by the beginning of their senior year.
- ▶ View the placement requirements at:



<https://www.easternflorida.edu/testing/placement-testing/assessment-scores.php>

# *EFSC Placement Testing on the High School Campus*

- ▶ EFSC will offer the PERT on the high school campus on **Tuesday, February 13**. Please register by **Tuesday, February 6**.
- ▶ Students will receive their score report the day of testing





# Testing Anxiety?? Get prepared!!!

1. Google *PERT Study Guide*; take *PERT Practice Tests*.
2. Take the PERT at your school.
3. Retest on PERT or ACCUPLACER 30 days after original test date.
4. Go to RegisterBlast on EFSC website to schedule a PERT retest.
5. Go to Placement Testing Services on EFSC website to schedule a remote ACCUPLACER retest.

# Requirements to STAY in the Early College Program

- ❑ “C” or higher in courses requiring writing skills and math competencies
- ❑ State cumulative unweighted high school GPA of 3.0 or higher
- ❑ College GPA of at least 2.0 each term
- ❑ On track to receive diploma and Associate degree at graduation
- ❑ Qualify for MAC 1105 or MGF 1106 by the fall term of 12<sup>th</sup> grade

# *Estimated Cost of Attendance*

## *2023-24 Academic Year*

### *UF Undergraduate*

Tuition/Fees	\$6,380
Books, Supplies, Equipment	1,450
Living Expenses	11,500
Transportation	1,570
Misc. Personal Expenses	2,194
<b>TOTAL BUDGET</b>	<b>\$23,094</b>

Source: [www.sfa.ufl.edu/cost/](http://www.sfa.ufl.edu/cost/)

# How will EFSC staff help you chart your pathway?

EFSC High School Outreach Advisors help students:

- ▶ Plan their degree program
- ▶ Register for classes
- ▶ Use “myGPS” to track courses toward their degree program
- ▶ Access academic support services



EFSC offers:

- ▶ Career Services to help students identify career interests and skills
- ▶ Elective courses, such as *Discover Your Major and Career and Success Strategies College & Life (SLS)*
- ▶ Seminars and clubs in selected career fields

## *Factors to Consider*

- ❑ Additional study expectations required with college coursework
- ❑ Courses designed for adults – **NO** modifications made to accommodate age and maturity level
- ❑ EFSC grades stay on permanent college **and** high school transcript
- ❑ Poor grades can impact scholarships, financial aid, and university admission

## *Factors to Consider*

- ❑ Summer classes may be needed to earn degree by graduation
- ❑ Balancing college, high school, and extracurricular demands is necessary
- ❑ Must meet high school and Associate degree requirements
- ❑ Arrange transportation on BPS school holidays and for classes taken outside of the Early College designated periods

# Considerations for Parents

- ❖ High school counselor is point of contact for parents seeking information about student
- ❖ Parents may not contact college instructors for student information (FERPA)
- ❖ Family must follow both high school and EFSC calendars
- ❖ Student is responsible for purchasing required consumables (i.e. workbooks and lab manuals)
- ❖ The college does NOT have an excused absence policy; attendance requirements are specified in each course syllabus



# Getting Started!

1. Submit *Student Interest Form* to the high school counselor **by the deadline.**
2. Take the PERT either at your school or EFSC and meet the minimum scores in Reading and Writing.
3. Submit the online EFSC Application for Admission.
4. Once you receive your acceptance letter with student ID, complete the online Dual Enrollment Orientation.
5. Schedule your Dual Enrollment Initial Advising appointment with your EFSC High School Outreach Advisor.
6. EFSC will request your high school transcript.



***Then....***



7. Turn in the Early College Program Student Performance Contract to your counselor **by your school's deadline.**
8. Attend ONE of four required in-person Early College Orientations.
9. Check your student Titan email for information about your registration status.
10. Follow your high school's directions to obtain your college textbooks!

# *Important Dates*



- ▶ Register for the PERT: **Deadline is February 6, 2024**
- ▶ PERT administered at high school: **February 13, 2024**
- ▶ Early College Program Student Performance Contract deadline: **March 21, 2024**
- ▶ Summer Registration Window opens: **April 1, 2024**
- ▶ EFSC Fall Registration Window opens: **TBA**

# *Important Dates (continued)*

## ▶ **Summer 2024 Terms**

- ▶ May 13 – August 2: Summer A (12-weeks)
- ▶ May 13 – June 21: Summer B (6-weeks)
- ▶ June 10 – August 2: Summer C (8-weeks)
- ▶ June 24 – August 2: Summer D (6-weeks)

## ▶ **Fall 2024 Term:** TBA

# *Important Dates (continued)*

## ▶ **Mandatory In-person Early College Orientation**

*Attend one of the following upon receiving college-ready test scores in reading and writing.*

- ▶ Monday, March 18, 2024: Titusville High School Auditorium
- ▶ Wednesday, March 20, 2024: Merritt Island High School Auditorium
- ▶ Tuesday, April 2, 2024: Eau Gallie High School Auditorium
- ▶ Tuesday, April 9, 2024: Bayside High School Auditorium

Doors open at 5:45 PM for registration. Presentation begins at 6:30 PM.

# Contact Information

## Student Services:

- ▶ Donna Adams, Guidance Counselor
- ▶ Holly Mauga, Guidance Counselor
- ▶ Greg Smith, College & Career Specialist
- ▶ Kelly Bombriant, AP Curriculum



EFSC Testing: Go to EFSC website: [www.easternflorida.edu](http://www.easternflorida.edu)

Insert RegisterBlast in the search box to schedule your PERT testing appointment online.

# *Achieve the Early College Program Goals!*

1. Complete the lower-level prerequisites for your major.
2. Graduate with your diploma and Associate degree.
3. Continue your education at a four-year university!



**In 2022-2023, 355 high school seniors graduated with an Associate Degree!**