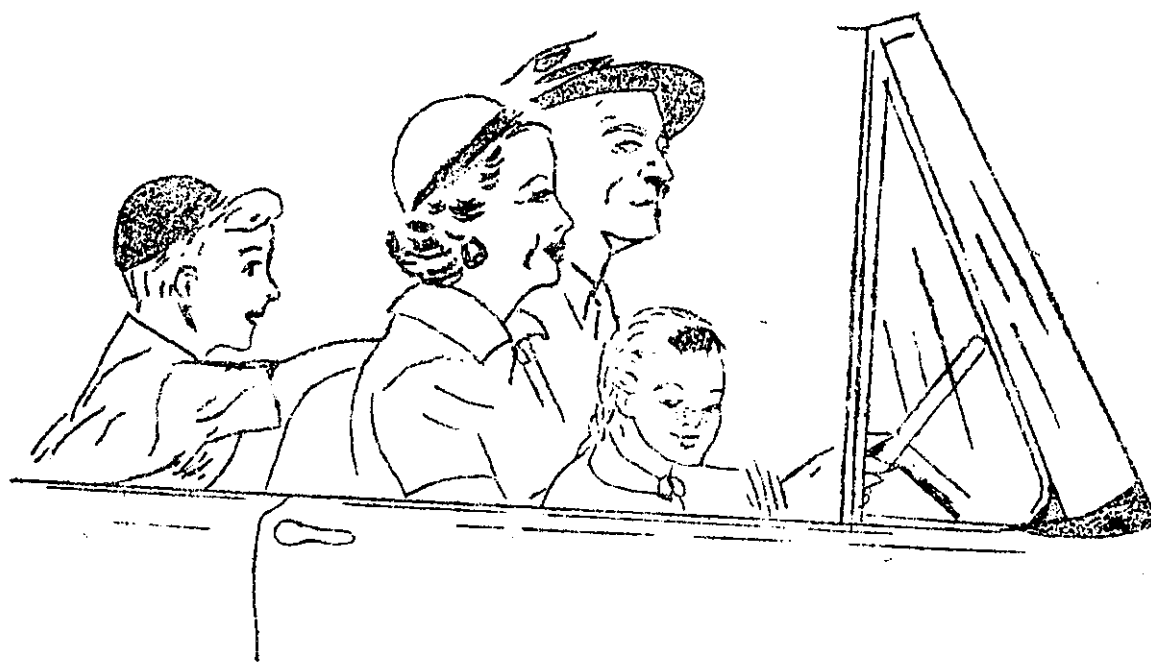


# CANTON

## Community Guide



Economic and Cultural Survey of Canton

## FOREWORD

This booklet was compiled by the Problems of American Democracy Class of Canton High School under the sponsorship of the Canton Chamber of Commerce.

It is hoped that it will prove helpful to new citizens of Canton.

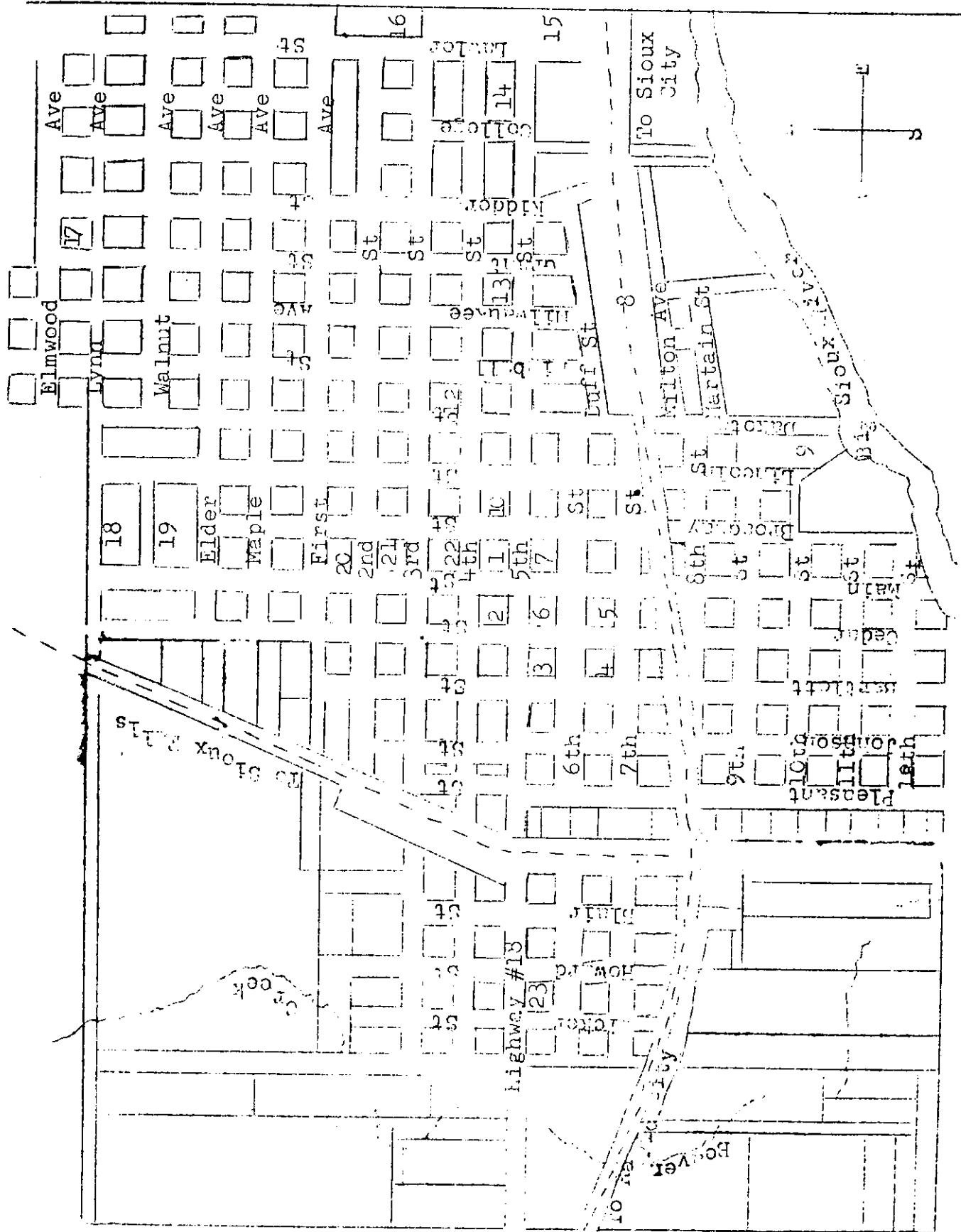
## TABLE OF CONTENTS

MAP OF CANTON . . . . .	2
GENERAL TOPOGRAPHY AND GEOGRAPHICAL LOCATION . . . . .	3
TRADE AREA . . . . .	4
CIVIC DEVELOPMENT . . . . .	5
CLIMATE . . . . .	6
FINANCIAL FACILITIES . . . . .	7
TAX STRUCTURE . . . . .	8
SCHOOLS . . . . .	9
PROFESSIONAL DIRECTORY . . . . .	11
BUSINESS DIRECTORY . . . . .	12
CHAMBER OF COMMERCE . . . . .	16
AGRICULTURE . . . . .	19
COMMUNICATIONS . . . . .	20
POWER . . . . .	21
WATER AND SEWERAGE FACILITIES . . . . .	22
TRANSPORTATION . . . . .	23
CULTURE ORGANIZATIONS . . . . .	24
CHURCHES . . . . .	39

### A BRIEF HISTORY OF CANTON

Canton had it's earliest beginnings about 1864, as a sod shelter for travelers known as Trapper's Shanty. In 1868, an influx of Norwegian immigrants caused a rapid rise in population, and in 1881 Canton was organized as a city and was established as the county seat of Lincoln County.

Today, with the Scandinavian influence still predominant, Canton's population is approximately 2,613.



### TRADE AREA

Included in Canton's trade territory are smaller villages such as Fairview, Harrisburg, Hudson, Worthing; all in South Dakota; and Beloit and Inwood, in Iowa; all within a 20 mile radius.

The income in this community has been consistently stable through good years and bad years. During 1953 the estimated retail sales for Lincoln County were \$7,229,000.

Regardless of the size of this community its industries, cement tile plant, dairies, frozen pheasant processing, etc. enjoy a flourishing local, regional, and national market.

### CIVIC DEVELOPMENT

Government- Commission form with mayor and four councilmen.

Streets- 27 miles hard surfaced streets, 80% being sidewalk.

Fire Department- (volunteer basis)-utilizing two general purposes. Pump trucks all having a 750 gallon water capacity for county fires.

Police Protection- Maintained by three officers using one police car. These officers combine their efforts with county and state law enforcing when necessary.

## CLIMATE

### Temperature

Average (45 years) for:  
January 17.30 F  
July 74.10 F

### Precipitation

Average (45 years) for:  
January Low .55 inches  
June High 4.59 inches

Total annual average precipitation 24.89 inches

### Frost Data

Length of growing season: 128 days  
Average date of first frost: October 2nd  
Average date of last frost: May 28th



### FINANCIAL FACILITIES

One bank and one savings and loan association serve this community. Their financial statements as of December, 1953, are as follows:

	<u>Capital</u>	<u>Surplus</u>	<u>Deposits</u>
Farmers State Bank	\$100,000.	\$235,305	704,638,530
First Federal Savings & Loan	10,766	41,875	654,374

Combined deposits of both banks total \$5,292,904 of a per capita savings average of over \$2000.

## TAX STRUCTURE

Assessed value of property for tax purposes 1953:

\$2,200,000.00

Assessed value of property for tax purposes 1949:

\$2,005,727.00

City property tax rate for 1953: 20.5 mills

(13 mills general, 4.7 mills disposal plant,  
2.8 mills 1950 paving)

City property tax rate for 1949: 24.22 mills

(14.4 mills general, 5.55 disposal plant  
bonds, 2.27 mills paving, 2.0 mills swimming pool)

Net bonded debt---city: \$65,000.00

County property tax rate for 1953: 8.13 mills

County property tax rate for 1948: 6.74 mills

County bonded debt: None

School district tax rate for 1953: 42.92 mills

School district tax rate for 1948: 38.08 mills

School district bonded debt: \$30,000.00

Total mill levy for 1953: 72 mills for city,  
county, school

Property valuation at 25% full and true

## SCHOOLS

The local school system includes two elementary and two high schools with a combined enrollment of 861 students. One of the high schools is public while the other, Canton Augustana Academy, is a coeducational institution operated by the Evangelical Lutheran Church.

The Canton High School has been approved by the North Central Association of Schools and Colleges since 1921 and offers a varied curriculum plus a complete physical training department. The physical education department possesses the only indoor swimming pool in a public school in South Dakota.

This highly regarded school system has the capacity for twice the present enrollment in its high school buildings.

## CANTON HIGH SCHOOL

### ACTIVITIES

#### Athletics

Football  
Basketball  
Track

#### Dramatics

All High Play  
Junior High Plays  
Senior Play

#### Forensics

Declamation  
Debate

#### Journalism

Annual Yearbook  
Newspaper

#### Music

Band Glee Club  
Mixed Chorus

#### Student Government

Student Council  
Government Days

#### Misc. Organizations

G.A.A.  
F.H.A.  
F.F.A.  
Lettermen's Club  
Shop Club

## PROFESSIONAL DIRECTORY

### ATTORNEYS

Anderson Carl K.  
Bogue H.  
Brown C. L.  
Mastin S.  
Myrabo L. K.

### AUCTIONEERS

Baird H. Clark  
Souvignier Gaylon

### CHIROPRACTOR

Andreson O. T. Dr.

### DENTISTS

Aker H. T. Dr.  
Goodman G. O. Dr.  
Goodman G. O. Jr. Dr.  
Warness Wm. Dr.

### OPTOMETRIST

Bunkers R. B. Dr.

### PHOTOGRAPHERS

Tollinger Ray & Thelma

### PHYSICIANS

Angelos Theo. Dr.  
Diekman F. H. Dr.  
Green Clويد Dr.  
O'Banion H. W. Dr.  
Park L. L. Dr.

### VETERINARIAN

Freeman R. F. Dr.

## BUSINESS DIRECTORY

### BARBER SHOPS

Amen's Barber Shop  
Harstad's Barber Shop  
Kruger's Barber Shop  
O'Dell's Barber Shop  
Peterson & Bakkene Barber Shop

### BEAUTY SHOPS

Crystal's Beauty Shop  
Helen's Beauty Shop  
Irene's Beauty Shop  
Joyce's Beauty Shop  
Mildred's Beauty Shop

### CAFES

Canton Hotel  
Coffee Shop  
Lena's  
Lewdoc  
Townhouse Bakery & Cafe

### CLEANERS AND LAUNDRY

Canton Cleaners  
Canton Domestic Laundry

### CLOTHING STORES

Baumann's Clothes Shop  
Frislie Bros. Men's Wear  
Frislie Canton Apparel  
Joyce's Style Shop  
Sexe Clothing Store  
Toddler's Shop

### CREAMERY'S

Farmer's Co-operative Creamery

### DAIRIES

Canton Creamery Co.

### DEPARTMENT STORES

Amundson's Store  
K & K Company

### DRIVE\*In's

Dairy Freeze Drive-In  
Eide's Drive-In

### DRUG STORES

Farrell Pharmacy  
Molstad Pharmacy  
Noid Pharmacy

### ELEVATORS

Farmers Elevator Co.  
Hunting Elevator

### EXISTING INDUSTRIES

Canton Livestock Sales  
Northern States Power Co.  
Northwestern Bell Telephone Co.  
Sioux Valley News  
South Dakota Pheasant Co.

### FEED STORES

Canton Feed Store  
Canton Produce  
Hartland Hatchery  
Payne's Produce  
Thompson Seed and Feed

### FURNITURE STORE

Anderson & Sons Furniture

### GARAGES

Al's Repair Shop  
Anderson Motor Co.  
Chris Standard Service  
Ekle's Service Station  
Ellingson Motor  
Fait Bros. Auto body  
Farmers Co-op Oil Co.  
Hall Motor  
Harolds Texaco Station  
Hartman Service  
Hoffman and Mickelson  
Kurvink Station  
Mel's Standard Oil Service  
Pederson Service Station  
Skyberg Chevrolet and Buick Co.

### GROCERY STORES

Amundson Store  
Bowyer Bros. Grocery  
Council Oak Store  
Pantry Grocery  
Ron's Grocery  
Vern's West Side Market  
Visser Market

## HOTELS AND MOTELS

Canton Hotel & Cafe  
Nichol's Motel  
Vickerman's Lee Hotel  
West Side Hotel

## HARDWARE STORES

Anderson Hardware  
Canton Hardware Store  
Coast-to-coast Store  
Gambles

## INSURANCE AGENCIES

Eartholomew Insurance  
Dirks Insurance and Realty  
Farmers Insurance Group  
Farmers Mutual Insurance Company  
Lutheran Brotherhood Insurance  
Opland Insurance and Tax Office  
Skyaasen Insurance Agency  
State Farm Mutual Auto Insurance Co.

## IMPLEMENT SHOPS

Husman Implement  
Reierson Sales and Service  
Rikansrud Implement  
Sweetman Bros. Implement  
Thormodsgaard Auto and Implement

## JEWELRY STORES

Moe's Jewelry  
Williamson Jewelry

## LUMBER YARDS

Farmers Elevator Co. Lumber Dept.  
Great Plains Supply Co.  
John W. Tuthill Lumber Co.

## MACHINE SHOPS

Bragstad Cabinet and Machine Shop  
Kliens Machine Works

## MEAT MARKETS

Harry's Market

## MISCELLANEOUS

Anderson & Son's Funeral Parlor  
Briggs Recreation  
Canton Cab



## MISCELLANEOUS (CONT'D)

Canton Beverage  
Canton Greenhouse  
Farmers State Bank  
First Federal Savings & Loan Assn. of Canton  
Lloyd Dammeir's Furnace Repair  
Maurice Wallquist- Cornshelling  
Molstad Ice  
Nathaniel Anderson- Feed Grinding & Mixing  
Owen's Place  
Pederson Paint Store  
Perry's Electric Shop  
Sinning Sheet & Metal Works  
Thorson Bros. Auto Salvage  
Western Union Telegraph Co.

## OIL COMPANIES

Bahnson Oil Company  
Farmers Co-op oil Co.  
Wolfe Oil Co.

## RADIO SHOPS

Canton Radio & T.V.  
Louie's Radio Service  
The Radio Fix

## RECREATION PLACES

Canton Bowl  
Canton Theater  
Music Box Roller Rink

## SHOE SHOPS

Enstrom Shoe Repair  
Reinfield Shoe Repair

## TRUCKERS

Ernest Torkleson  
Kenneth Lien  
Kermit Nelson  
Lester Torberson  
Peter Sorenson  
Ruth Souvignier

## VARIETY STORES

Martin's Ben Franklin Store

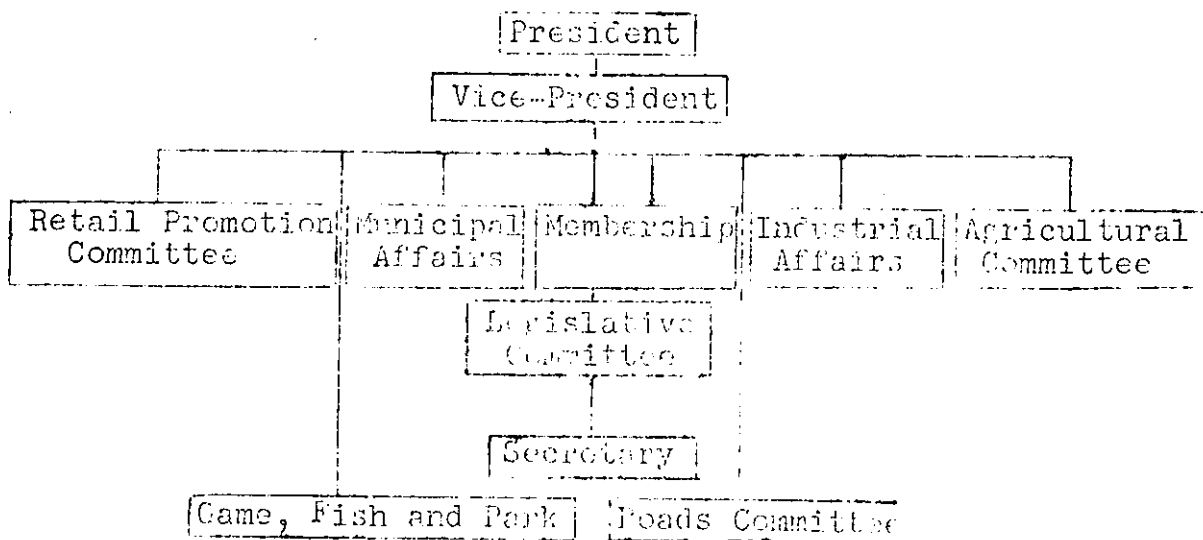
## WATER SERVICES

Andrew's and Oakland's Water Service  
Culligan Soft Water Service

A chamber of Commerce has been active in Canton for many years. At present over one hundred firms are members.

The purpose of this organization is to make Canton a better place to live in by every possible means.

The organization of the chamber is charted below.



The president and vice-president are elected for one year terms. The secretary is appointed. These officers plus the directors of the various standing committees constitute the Board of Directors. Members of this board are elected for three years.

To the standing committees special committees are appointed as needed.

A summary of some of the activities of the Canton Chamber of Commerce shows its importance to the community.

At a dinner meeting in January officers are installed and the annual Man-of-the-year Award is announced.

In March each year is held a Farmer's Day. In the evening there is entertainment, lunch and prizes for the farmers of the surrounding area. This event attracted an attendance of about 1200 in 1954.

Each spring, usually in May, the organization sponsors a Clean Up Week with emphasis on both business and residential areas. City improvements during this week included about 60 new street markers, a fence painted at the ball park and other similar work.

In August the Chamber, and particularly its Agriculture Committee, works in close cooperation with 4H Leaders and other interested organization in sponsoring the Annual 4H Achievement Days. This occasion recognizes achievements attained by 4H members and becomes a larger event each year.

Calf Day is a new event added in 1954. In the fall over 65 calves were purchased by Canton business and professional men and given to 4H boys to raise.

These calves will be sold after they are judged in the 1955 Achievement Days and the boys will repay their loans as required by 4H regulation. Losses due to death are absorbed by the participating chamber members.

Halloween Spook Days is another project new in 1954. Children in grades 1-6 took part in a contest to see which group could paint the best Halloween scene on the windows of various downtown stores. Prizes were awarded to the winners.

The Christmas Program includes decorating the town, and free parties for children on 3 successive Saturdays prior to Christmas Day. There will also be drawings for worthwhile prizes in the various stores.

Beginning in 1954 the Chamber presented each family moving to Canton with a symbolical key to the city plus coupons worth 50 dollars in merchandise and service contributed by participating firms.

The Canton Chamber also makes an annual contribution to the East-West Highway Association. This association is promoting the use of highway 18 as a tourist route from Milwaukee westward. Signs are being erected advertising the route. The idea for this inter-state association originated with men who are members of the Canton Chamber of Commerce.

## AGRICULTURE

Agriculture is primarily the principal industry of this area. The region around Canton is considered one of the richest agricultural provinces in the United States.

The major crop yields from this area are varied. Some of the principal crops are corn, wheat, oats, barley, flax, soybeans, alfalfa, and hay.

In addition to its farm produce, the meat packing industry of Sioux Falls receives thousands of head of livestock raised in the Canton area each year.

There are two large grain elevators in Canton having a total capacity of 300,000 bushels. Government bins will provide an additional 384,000 bushel storage capacity with further expansion planned for 1954.

Headquartering in Canton are four full-time employees that devote their time to soil conservation programs within the county. There are some 1800 farms in the county and over two-thirds of them participate actively in soil conservation work.

## COMMUNICATIONS

### Telephone

Northwestern Bell Telephone Company  
865 urban subscribers  
367 rural subscribers

### Telegraph

Western Union  
Available 24 hours per day

### Newspaper

Sioux Valley News (weekly)  
Circulation: 2534

### Radio

Sioux Falls, S. D., Sioux City, Iowa,  
and Omaha, Nebraska  
No local station

### Television

Good reception from Sioux Falls and  
Sioux City stations  
No local station

## POWER

### Electric

Electric service is furnished through the Northern States Power Company's division headquarters at Sioux Falls, South Dakota. This division is a part of NSP's vast interconnected system. Sioux Falls' Division serves some 30,000 urban and rural customers.

### GAS

Natural gas is available for industrial and residential use and this service is provided by the Iowa Public Service Company with headquarters at Sioux City, Iowa.

## WATER AND SEWERAGE FACILITIES

Canton has a total of five water wells with four of these in use and one on standby service. The pumping capacity of these wells is 650,000 gallons per day. The average depth is 450 feet. The storage capacity of 500,000 gallons more than meets a present demand of 225,000 gallons per day. Hardness in parts per million is 14 grains, and the water supply is treated with chlorine.

A special sewage disposal bond issue was approved some years ago, and will find the completion of a new disposal plant during 1954. This plant will double the present sewerage capacity. Industrial flowage into stream or lakes is not permitted.



## TRANSPORTATION

### Rail

The excellent rail connections assure adequate transportation facilities in and out of the city for any type of enterprise. The Chicago, Milwaukee, St. Paul and Pacific Railroad serves Canton with main-line service, 7 passenger and 6 freight trains running every other day. Direct passenger service of 13 hours is provided to Chicago.

### Trucking Companies

Two local trucking companies, the Tri State Transportation Company and the Rowe Transportation Company, service the four-state area of Minnesota, South Dakota, Nebraska, and Iowa. National connections are available through these companies. Six livestock truckers and other small units operate out of Canton.

### Air

There is a small municipal landing field for light private planes only. Major air travel connections are at Sioux Falls, 24 miles from Canton. (Sioux Falls is served by Braniff International Airways.)

W. C. T. U.

The Women's Christian Temperance Union in Canton was started in 1943. At present there are approximately sixteen members plus some associate members who are usually men. Anyone who is interested in fighting alcohol, narcotics, and tobacco, may join. There are committees from three of our churches to solicit members because they feel they can make more progress with the added power.

Their main objective is to promote temperance. In the past they have tried to cut down liquor traffic by making it more difficult to acquire beer licenses. Sometimes they send representatives from their group before the city council to promote their objective here in Canton. Through their dues, \$3.00 for voting members, \$1.00 for associate members, they aid education as well as temperance.

## ROTARY CLUB

Canton's Rotary Club formed in 1938. Its purpose is four-fold, including sociability, learning to understand one's associates, promoting good will, and community service.

The objective is international: better understanding between countries. With this objective in mind the Rotary districts sponsor exchange students. Students from districts in the United States may attend college in another country. Rotary districts then sponsor exchange students from abroad to study in United States colleges.

Rotary Club activities are many and varied. They include sponsoring Boy Scouts, Boys State delegates, giving Christmas presents to poor children, and in 1954 the gumball machine proceeds were used for underprivileged children.

## HOSPITAL AUXILIARY

The auxiliary originated when the hospital was situated in Canton. It is now a joint organization between Canton and Inwood. The membership is approximately 150 members.

Their meetings are held in the hospital dining room. They sew, make, and repair all linen supplies for the hospital. They buy their own sewing machines with memorials they receive. They also buy some kitchen equipment. An annual affair is a rummage and bake sale.

One can become a member voluntarily, by paying fifty cents a year for dues.

## SENIOR ART CLUB

The Senior Art Club was organized in 1909. At present there are seventeen members. They meet on the first and third Monday of every month, at the homes of members.

The club was once a definite art club, but now there are projects of various sorts. They discuss problems about the state, nation, and our government. At every meeting they have a study period and discussion period. About two or three book reports and a few reports on art are given each year.

## STUDY CLUB

The Study Club was organized in 1902. It became federated in 1904 and nationally federated in 1913.

There are approximately sixteen members. They meet twice a month from September to May.

Their motto is "A word or thought is what each makes it do himself."

Each member gives one lesson a year on miscellaneous subjects such as science, music, biographies of Edison and Lindbergh, or book reviews on current best-sellers. Each time they have assigned roll call topics. They have one program on South Dakota each year.

Each year they send a "Care" package. They also make a yearly contribution to the library. In 1954 they raised funds for the community recreation program.

## ATHENIAN DEBATING CLUB

Cantons Athenian Debating Club originated in 1899. The limit of members permitted in the club is twenty, although at present there are only fifteen participating members.

The club meets each Monday night.

## AMERICAN LEGION

The Martin Ellingson post of Canton consists of approximately 258 members and participates in almost all of the national activities of the American Legion.

The Legion was originally set up to take care of war widows, orphans and the disabled veterans. Since then it has expanded its activities to the care of crippled children and child welfare. Recently they have instituted a Back To God movement to encourage people to go to church. They also keep a man in the various veterans hospitals to see that everything is available for the men.

To belong to this organization, one must be a war veteran with an honorable discharge. No other requirements are set up.

The purposes of this group have been summarized by saying that it is established for the good of country, state and community and will do anything it can to promote this.

## AMERICAN LEGION AUXILIARY

The American Legion Auxiliary is composed of wives of the local Legion post. The organization has two main projects--a child welfare program and a rehabilitation project which are done in cooperation with a national program.

The programs are carried out in many different ways: care of veterans children, aid to disaster areas, visits to a nearby veterans hospital with a Christmas party for the patients, and the annual poppy sale. The Canton Auxiliary has a membership of about 140.

Another organization connected with the local post is the Junior Auxiliary, made up of young people to the age of eighteen.

### CANTON BAPTIST CHURCH

The Canton Baptist Church holds regular church services on Sunday, Sunday school being at 10:00 in the morning with worship service at 11:00. The church also holds evening services at 7:30 on Sundays. Outside of the regular service the church holds a mid-week service on Wednesday night which is devoted to Bible study. Among the various activities of the church is the Women's Missionary Club. Another club for boys is the Boys' Sky Pilots of America.

### CHURCH OF THE FULL GOSPEL

The Church of the Full Gospel holds its Sunday morning worship at 11:00. Sunday School begins at 10:00. They also have Sunday evening evangelistic services at 8:00, and Wednesday evening Prayer Services at 8:00.

There are not any organizations within the church as yet.



## ST. CHYSOSTOM'S CATHOLIC CHURCH

There is Mass every morning and Rosary and Benediction every night, with confessions on Saturdays.

There are three Societies in the Catholic Church. The first, The Rosary and Alter Society is a womens club. They meet in the church the first Thursday evening of every month, and also at their homes. They sponser card parties, luncheons and dinners at the church. They supply and maintain what is needed for divine service such as clean linen and flowers.

The Holy Name Society, which is a men's club, meets on the second Thursday of every month. They sponser social activities and the study of Faith. They also supply material needs of the church, which concerns all the repairs.

The Sodality of the Blessed Virgin Mary is a young peoples club. They meet on the first Thursday of every month during the evening. This club is not quite organized as of yet but they will be partly instructional and partly social. They will also do what they can for the home and foreign missions.

The purpose of these clubs are giving honor and Glory to God, greater Santification of its members, and to do work for the church. There are also seventeen choir members and twenty alter boys.

## CANTON LUTHERAN CHURCH

The Canton Lutheran Church was organized on October 30, 1862.

Services are held at 9:30 for the Sunday School and at 11:00 for Divine Worship Services. At 2:30 once a month on Sundays is the Adult Instruction Class, Communion is also at 8:00 on Sundays once a month, also once a month on Sundays at 8:00 there is League Social.

There are several different groups of the Church that meet in the Church parlor each month such as the Mothers Club at 8:00, the Sunday School Teachers at 8:00, the Deacons and Trustees at 8:00, the Brotherhood at 6:30, and the Canton and the North Ladies Aid which meets every 2 weeks.

The choir meets every Wednesday night at 8:00, Confirmation every Saturday morning, League every Wednesday night at 6:45, and the Dorcas every other Tuesday night at 8:00.

## CANTON METHODIST CHURCH

The Canton Methodist church holds services each Sunday at 10 A.M. and 8 P.M. Sunday School is held at 11 A.M.

The church supports several activities designed to give service to the church and to the members. For example, the choir and the junior choir take an active part in regular services.

The Women's Society of Christian Service is made up of four circles, the Esther, Ruth, Friendly, and Evening. Together these circles help pay the minister's salary and contribute to the support of a missionary in Bolivia.

The Wesley class is an organization of married couples. The Altruas are a class of older women. Both organizations meet each Sunday.

The Methodist Youth Fellowships are divided into two groups--seniors(those of high school age) and juniors. Each group meets separately once a week.