

Carle Place School District

Assessment Results December 1, 2022

Presented by

Dr. Christine Finn, Superintendent

Eileen Fredericks, Assistant Superintendent for Instruction and Personnel

Lauren Moriarty, Principal -- Cherry Lane Elementary School

Catherine Silletti, Principal -- Rushmore Avenue Elementary School

Thomas DePaola, Principal -- Carle Place Middle School/High School



US News Best High Schools Ranking

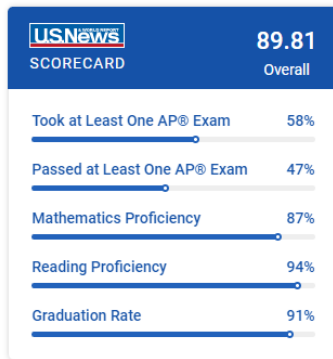
Where we were...

2019 Rankings

Carle Place Middle Senior High School is ranked #1,757 in the [National Rankings](#). Schools are ranked on their performance on state-required tests, graduation and how well they prepare students for college. Read more about [how we rank the Best High Schools](#).

All rankings:

- #1,757 in [National Rankings](#)
- #165 in [New York High Schools](#)
- #199 in [New York, NY Metro Area High Schools](#)



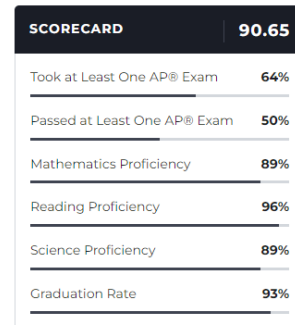
Where we are...

Carle Place Middle Senior High School 2022 Rankings

Carle Place Middle Senior High School is ranked #1,669 in the [National Rankings](#). Schools are ranked on their performance on state-required tests, graduation and how well they prepare students for college. Read more about [how we rank the Best High Schools](#).

All Rankings

- #1,669 in [National Rankings](#)
- #161 in [New York High Schools](#)
- #198 in [New York, NY Metro Area High Schools](#)



Where we want to go...

- Accomplishments
- Data
- Goals



Carle Place School District

Cherry Lane School

2021-2022



Accomplishments

Program

- Professionally developed all staff in the Science of Reading
- Analyzed and updated Science curriculum at all grade levels (ongoing)
- Integrated STEM for all grade levels in Library Media Center
- Initiated student goal setting and tracking across all grade levels through our data meetings each cycle

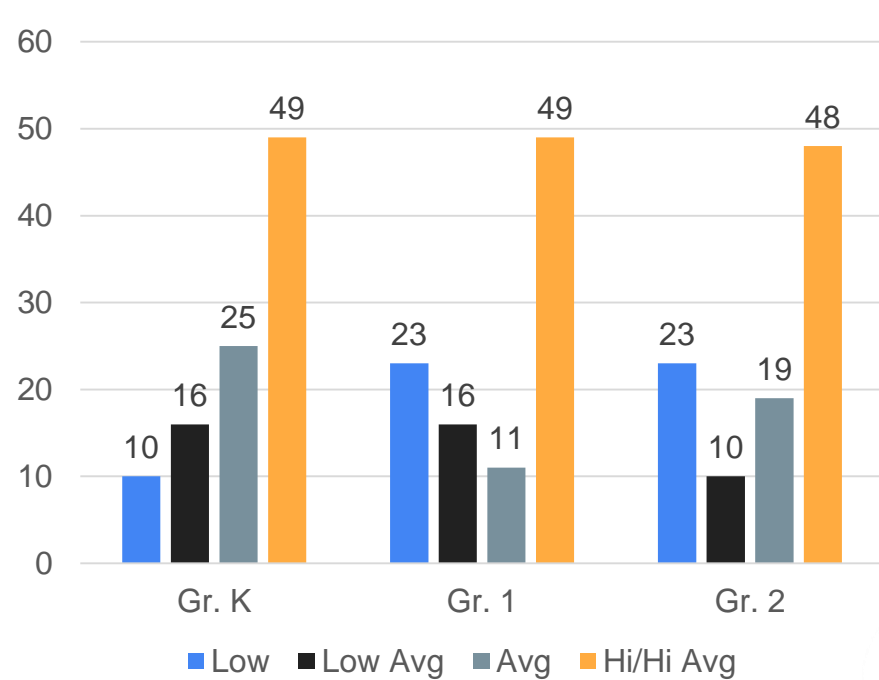
Positive Culture and Identity

- Created a daily student newscast
- Implemented action teams to involve students and staff in continuing to grow a community of leaders and learners
- Utilized a variety of methods for communication and outreach through Twitter, updated website, monthly updates to families

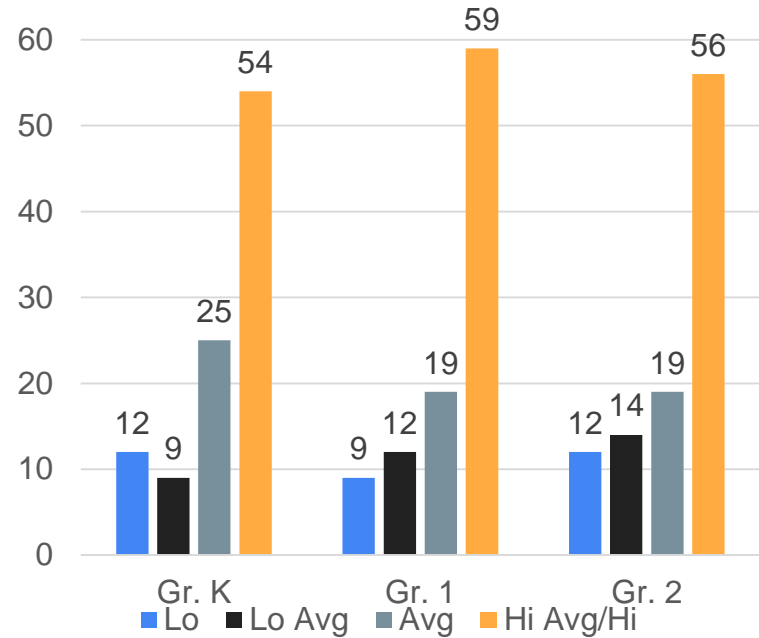


NWEA Math Data

Math 2021



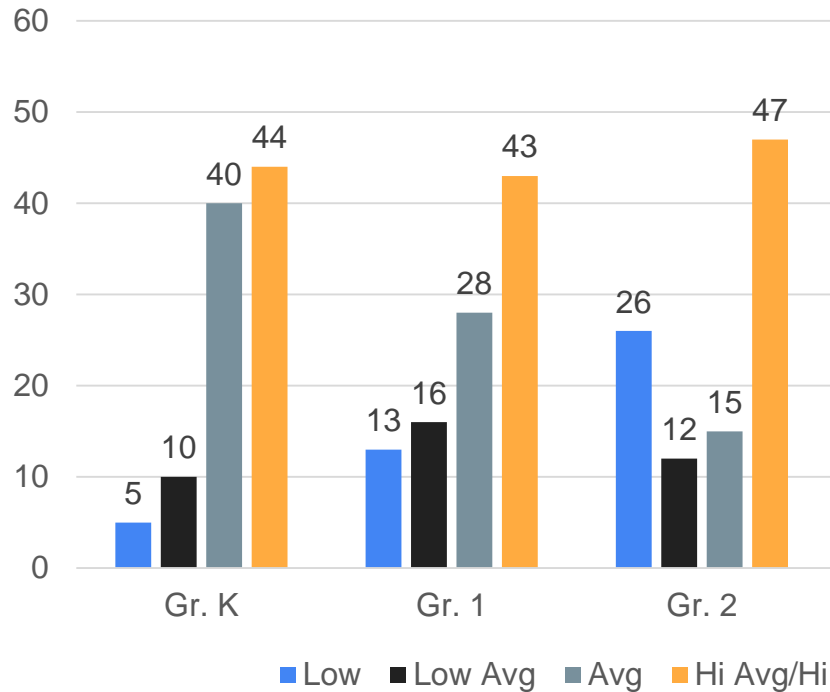
Math 2022



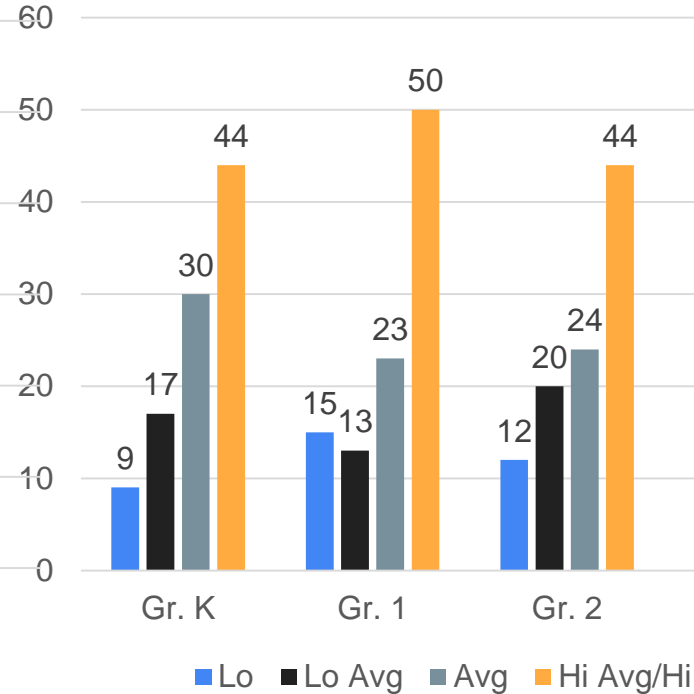
NWEA Reading Data



Reading 2021

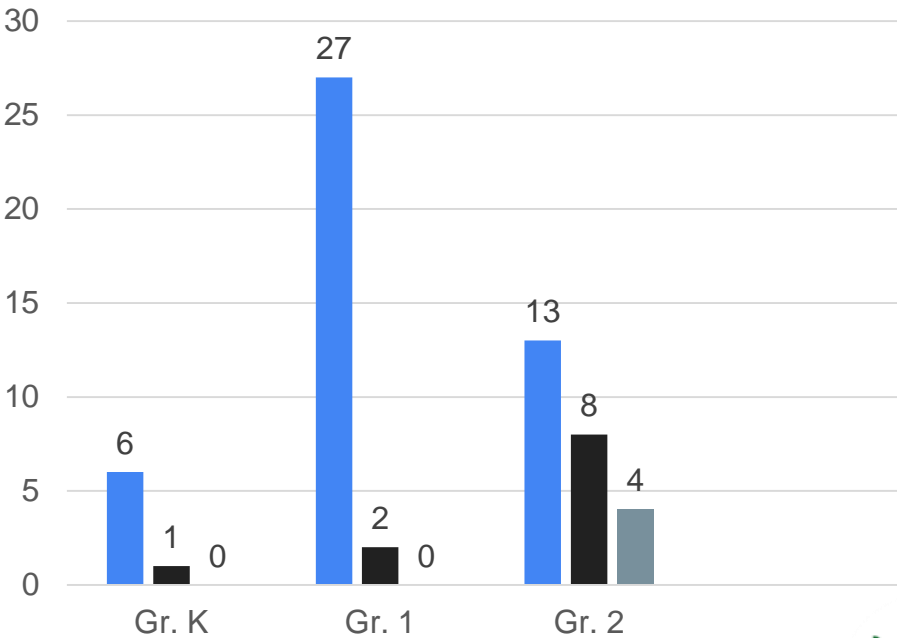


Reading 2022



Aims Web Data

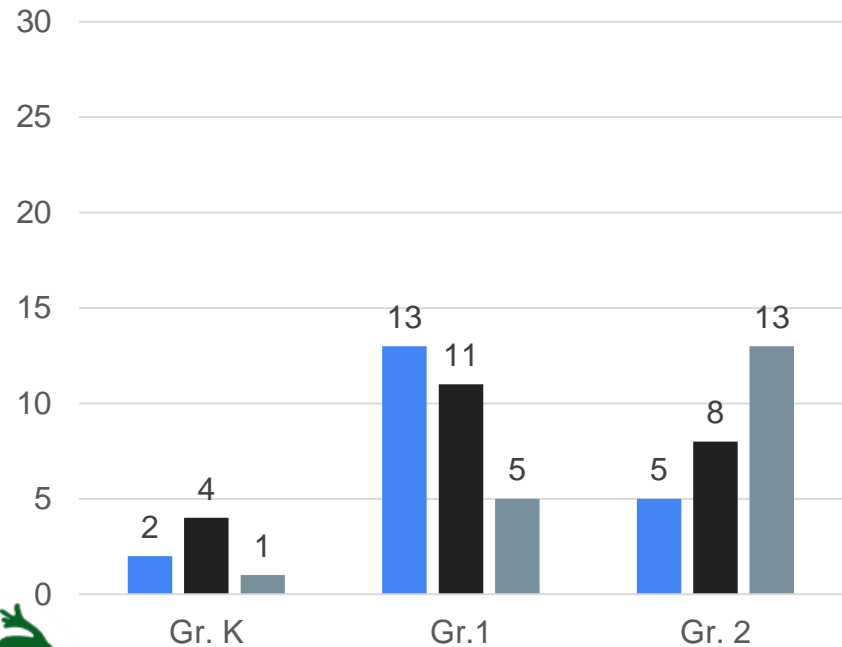
Fall 2021



Well Below Below Average



Spring 2022



Well Below Below Average

Goals

- Implement new strategies that we have learned throughout professional development in the Science of Reading.
- Grow and develop our student goal setting and tracking to ensure that students continue to take ownership of their learning.
- Analyze and streamline various sources of data in order to individualized reading and math instruction for all students
(NWEA, iReady, AimsWeb, ESGI, Early Bird, teacher conference notes and observations).



Carle Place School District

Rushmore Avenue School

2021-2022



Accomplishments

- 62% of all students participating in the NYS ELA Assessment received a grade of 3 or 4 vs. 46% across NYS.
- 75% of all students participating in the NYS Math Assessment received a grade of 3 or 4 vs. 38% across NYS.
- 94% of all students participating in the NYS 4th Grade Science Assessment received a 3 or 4.
- According to our AimsWeb results, our students exceeded the average gain across the nation in all grade levels except 3rd grade (where we missed the average gain by 1 point).



State Assessment Data

RUSHMORE NYS TEST RESULTS

Math

GRADE	LEVEL 4	%	LEVEL 3	%	LEVEL 2	%	LEVEL 1	%	REFUSED	%
3	20	24%	35	42%	19	23%	8	6%	13	14%
4	28	42%	27	40%	11	16%	1	1%	27	29%
5	33	50%	22	33%	4	6%	7	11%	19	22%
6	32	40%	25	31%	16	20%	8	9%	33	29%
	At or Above				Below					

National Rank: Grade 4- 36% Proficient

Rushmore: Grade 4- 82% Proficient

NYS- All Grades 3-8: 38.6% Level 3-4

Rushmore 3-6: 75%



State Assessment Data

RUSHMORE NYS TEST RESULTS

ELA

GRADE	LEVEL 4	%	LEVEL 3	%	LEVEL 2	%	LEVEL 1	%	REFUSED	%
3	2	3%	49	60%	25	31%	5	6%	13	14%
4	17	25%	17	25%	28	41%	6	9%	26	28%
5	11	17%	26	41%	19	30%	8	12%	21	25%
6	43	48%	22	24%	12	13%	13	14%	24	21%

National Rank: Grade 4- 33% Proficient

Rushmore: Grade 4- 50% Proficient

NYS- All Grades 3-8: 46.6% Level 3-4

Rushmore 3-6: 62%



NWEA Data

NWEA Map Spring 2022 Mathematics

Grade Level	Percent @ or above the national grade level norm	Rushmore Mean RIT	Norm Mean RIT
3	63%	203.9	201.1
4	80%	218.9	210.5
5	84%	230.2	218.7
6	73%	228.9	222.9

NWEA Map Spring 2022 Reading

Grade Level	Percent @ or above the national grade level norm	Rushmore Mean RIT	Norm Mean RIT
3	61%	199.6	197.1
4	70%	209.7	204.8
5	70%	215	211
6	59%	216.9	215.4



AimsWeb+ Data

AIMSWEB + Tier Transition : Response to Intervention

AIMSWeb Plus Reading – Tier Transition Summary from Fall 2021 to Spring 2022

Grade Level	Percent @ Low Risk Change from Fall to Spring (Tier 1)	Percent @ Mod. Risk Change from Fall to Spring (Tier 2)	Percent @ High Risk Change from Fall to Spring (Tier 3)
3	71% → 83%	16% → 6%	13% → 11%
4	77% → 91%	18% → 3%	5% → 6%
5	81% → 95%	11% → 0%	8% → 5%
6	79% → 89%	8% → 6%	13% → 5%



AimsWeb+ Data

AimsWeb+ Mathematics- Tier Transition Summary: Fall 2021 to Winter 2022

Grade Level	Percent @ Low Risk Change from Fall to Winter (Tier 1)	Percent @ Mod. Risk Change from Fall to Winter (Tier 2)	Percent @ High Risk Change from Fall to Winter (Tier 3)
3	37% → 37%	44% → 27%	19% → 36%
4	50% → 100%	25% → 0%	25% → 0%
5	38% → 57%	50% → 43%	12% → 0%
6	47% → 94%	32% → 6%	21% → 0%

**Note: AimsWeb+ progress monitoring for Math tests only student receiving AIS



Goals

- Continue to demonstrate growth in the areas of reading and mathematics, specifically targeting the 4th grade cohort where we did not exceed the national gains in reading.
- Utilize the data from iReady Math to pinpoint instruction for all students to ensure growth in individually prescribed areas of weakness.
 - This diagnostic creates individual pathways for all students to improve on areas of weakness and set goals for areas of strength
- Continue to build on the work in STEM with Project Lead the Way.



Carle Place School District

Middle & High School

2021-2022



Accomplishments

- Added another AP Course – AP Research.
- Total 16 AP Courses – Statistics, Seminar, Research, Environmental Science, Psychology most recent
- 313 Tests taken = MOST EVER w/ smallest high school enrollment in last 10 years
 - Previously 271 – Class 2014 which had 144 graduates
- 152 Test Takers, also MOST EVER (139 in 2014)
- 100% students graduated Class of 2022



NYS Assessment Data

Assessment	# Students	# taken (%)	% 1	% 2	% 3	% 4	% 3↑
ELA 7	104	80 (76.9%)	12.5	22.5	32.5	32.5	65.0%
ELA 8	109	75 (68.8%)	13.3	38.7	25.3	22.7	48.0%
Math 7	104	69 (66.3%)	21.7	21.7	39.1	17.4	56.5%
Math 8*	109	44 (40.4%)	38.6	50	6.8	4.5	11.4%

* Students in Math 8 Accelerated Algebra are exempt from the Math 8 Assessment.



Regents Exam Data

Regents Exam	# Students	% Passing	% Mastery
English Language Arts	98	94%	54%
Global History & Geography II	96	96%	43%



Regents Exam Data

Regents Exam	# Students	% Passing	% Mastery
Algebra I	92	97%	14%
Geometry	77	86%	21%
Algebra II	74	89%	27%



Regents Exam Data

Regents Exam	# Students	% Passing	% Mastery
Living Environment	108	83%	37%
Earth Science	90	86%	43%
Chemistry	72	78%	19%
Physics	38	58%	21%



FLACS Exam Data

FLACS Exam	# Students	% Passing	% Mastery
Italian	17	94%	53%
Spanish	54	98%	69%



College Credit Bearing Class Data

Course Name	# Credits	Institution	Enrollment
Creative Writing	3	LIU	44
Presentational Speaking	3	Syracuse	40
Economics	3	Syracuse	28
Forensics	4	Syracuse	25
Chemistry	8	Syracuse	7
Pre-Calculus	3	SUNY Farmingdale	52
Personal Finance	3	Syracuse	20
Accounting	3	LIU	8
Virtual Enterprise	6	LIU	36



AP Exam Data

Name	1	2	3	4	5	Total	% 3↑
English Language (11)	1	9	14	10	7	41	75.6
English Literature (12)	0	0	1	0	3	4	100



AP Exam Data

Total of 314 exams taken.

18 AP Exams (including 2 walk-ins)

AP Scholar = 23

AP Scholar with Honors = 9

AP Scholar with Distinction = 22*

*highest ever



AP Exam Data

Name	1	2	3	4	5	Total	% 3↑
Calculus AB	1	8	3	6	1	19	52.6
Statistics	13	8	7	5	2	35	40
Biology	0	0	4	7	4	15	100
Chemistry	2	3	1	1	0	7	28.6
Physics 1	2	3	1	1	0	7	28.6
Environmental Sci.	0	0	3	4	1	8	100



AP Exam Data

Name	1	2	3	4	5	Total	% 3↑
Spanish	2	8	8	1	1	20	50
Italian	0	1	1	4	2	8	87.5
World History	0	6	15	7	8	36	83.3
US History	3	8	12	8	6	37	70.3
European History	0	1	1	2	1	5	80
Psychology	16	6	0	12	5	39	43.6



AP Exam Data

Name	1	2	3	4	5	Total	% 3↑
Seminar	0	0	15	8	2	25	100
German	*	*	*	*	*	1	100
2-D Art and Design	*	*	*	*	*	1	100



MSHS Goals

- Explore adding AP Pre-Calculus for 2023-24.
- Encourage students to enroll in AP Seminar and other college-level courses.
- Explore adding AP Computer Science course for 2023-24
- Continue to provide supports for all courses with AP and Regents examinations.



Carle Place School District

District Wide Support for Learning & Assessment



Accomplishments

Ongoing Professional Learning highlights:

- Implemented research-based reading instruction grades K-6
- Improved reading in the content areas grades 5-12
- Presented the social studies curriculum in an Inquiry–based format
- Implemented math program K-6 focusing on cognitive processes, critical thinking and problem solving
- Implemented topic and pacing articulation among math teachers grades 5-12
- Developed K-6 Science pacing and mapping guides
- Kept current with changes in instructional technology
- Supported the Library Media Centers



Cohort Learning Loss

NWEA READING			
Spring 2022		Fall 2022	
Grade 3	69 %	Grade 4	70%
Grade 4	82%	Grade 5	74%
Grade 5	78%	Grade 6	77%
Grade 6	69%		

NWEA MATH			
Spring 2022		Fall 2022	
Grade 3	74%	Grade 4	71%
Grade 4	89%	Grade 5	90%
Grade 5	86%	Grade 6	84%
Grade 6	83%		



Goals

- Create curricular pathways in the middle grades 5-8
- Continue curriculum review, pacing and mapping K-12
- Continue visitations to elementary classrooms by secondary math teachers
- Revisit/refresh professional learning topics
- Maintain best practices in all curricular areas
- Continue to provide supports that address learning losses related to COVID



Upward ...

Hofstra

St John's

Notre Dame

Julliard

NYU

Boston College

Villanova

Hunter

Penn State

Northeastern

Stony Brook

Fordham



... and Beyond

- Add more Advanced Placement and College Level Opportunities
- Continue to Support achievement with student sub groups (ENL, Special Education, Free/Reduced Lunch)
- Continue to provide opportunities and pathways for ALL (Virtual Enterprise, BOCES, clubs, athletics, music)
- Continue to encourage students to STRETCH – more science, more math, more mastery, more participation in assessments



“I was able to...”



Future Presentations

- December 15, 2022 – Athletics, Physical Education, Health and FCS
- January 5, 2023 – Humanities, STEMb
- January 19, 2023 – Special Education, Leader in Me
- February 2, 2023 – Strategic Plan and Goals Update

Thank you!

