

# Riverside School District 96 Finance and Facilities



Strategic Planning 2020-2021

# Finance and Facilities

## Status and Outlook



### Outline

- **Finance**
  - **Fiscal Responsibility and Financial Ratings**
  - **Fund Accounting**
    - **Fund Balance to Expenditure Percentage**
    - **Fund Balance Projections**
    - **Revenue**
    - **Expenditures**
  - **Debt**
- **Facilities**
  - **Current Status**
  - **Maintenance**
  - **Future Capital Improvement Projects**
    - **Options for Financing**

# Finance and Facilities

## Status and Outlook



### Fiscal Responsibility and Ratings

- Operating Budget
  - has been balanced or better since at least 2006-2007
- Operating Performance
  - has added to fund balance since at least 2010-2011
- Operating Fund Balance
  - exceeded policy minimum of 40% since at least 2010-2011
- Illinois Financial Profile designation from ISBE
  - “Recognition” and 4.0 since 2005-2006
- Long-term debt rating:
  - Moody’s rating Aa1 since 2010: high-grade investment
  - Current Debt is 6.3% of legal limit



# Fund Accounting

## 2019-2020 Ending Fund Balances



### Operating Funds (\$18.1 million)

- 10 Educational (\$11.1)
- 20 Operations & Maintenance (\$1.9)
- 40 Transportation (\$2.5)
- 50 IMRF/ Social Security (\$1.6)
- 80 Tort (\$1.0)



Everyday School  
Operating Activities



### Non-Operating Funds (\$10.2 million)

- 30 Debt Services (\$0.9)
- 60 Capital Projects (\$10.9)



Spending for Projects that  
Serve Many Years

# Fund Accounting

## 2019-2020 Spending



### Operating Funds (\$25.4 million)

- **10 Educational (\$21.8)**
  - Personnel costs (except B & G): (\$18.0 million)
  - Supplies, Services & Equipment: (\$3.8 million)
- **20 Operations & Maintenance (\$2.2)**
  - Personnel (\$1.2)
  - Supplies, Services & Equipment: (\$1.0 million)
- **40 Transportation (\$0.6)**
- **50 IMRF/ Social Security (\$0.7)**
- **80 Tort (\$0.1)**
  - Workers' Comp Insurance
  - Property Insurance



Everyday School  
Operating activities



### Non-Operating Funds (\$10.2 million)

- **30 Debt Services (\$1.1)**
  - \$10 million borrowed in 2011
  - Two more payments of \$1.1 million
- **60 Capital Projects (\$9.1)**
  - Recent Construction Projects
  - Some bills due 2020-2021 (\$10.7 million)



Spending for projects that  
are serve many years

# Fund Accounting

## 2019-2020 Spending



### Operating Funds (\$25.4 million)

- **10 Educational (\$21.8)**
  - Personnel costs (except B & G): (\$18.0 million)
  - Supplies, Services & Equipment: (\$3.8 million)
- **20 Operations & Maintenance (\$2.2)**
  - Personnel (\$1.2)
  - Supplies, Services & Equipment: (\$1.0 million)
- **40 Transportation (\$0.6)**
- **50 IMRF/ Social Security (\$0.7)**
- **80 Tort (\$0.1)**
  - Workers' Comp Insurance
  - Property Insurance



Everyday School  
Operating activities



### Operating Fund Balance Percent

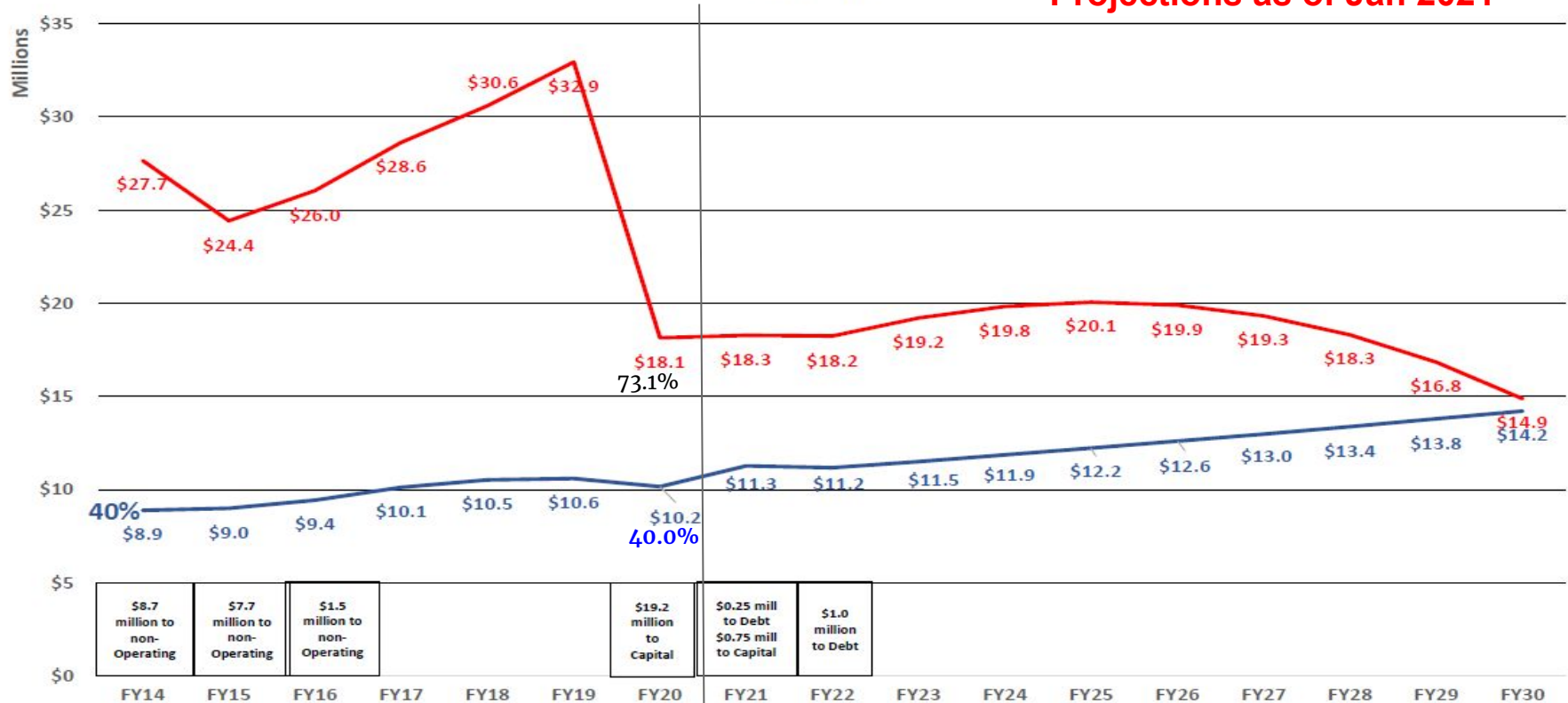
*Operating Fund Balance / Operating Fund Spending*

**\$18.1 million / \$25.4 million =**

**71.3%**

Year-End Operating Balances  
FY14 - FY30

Projections as of Jan 2021

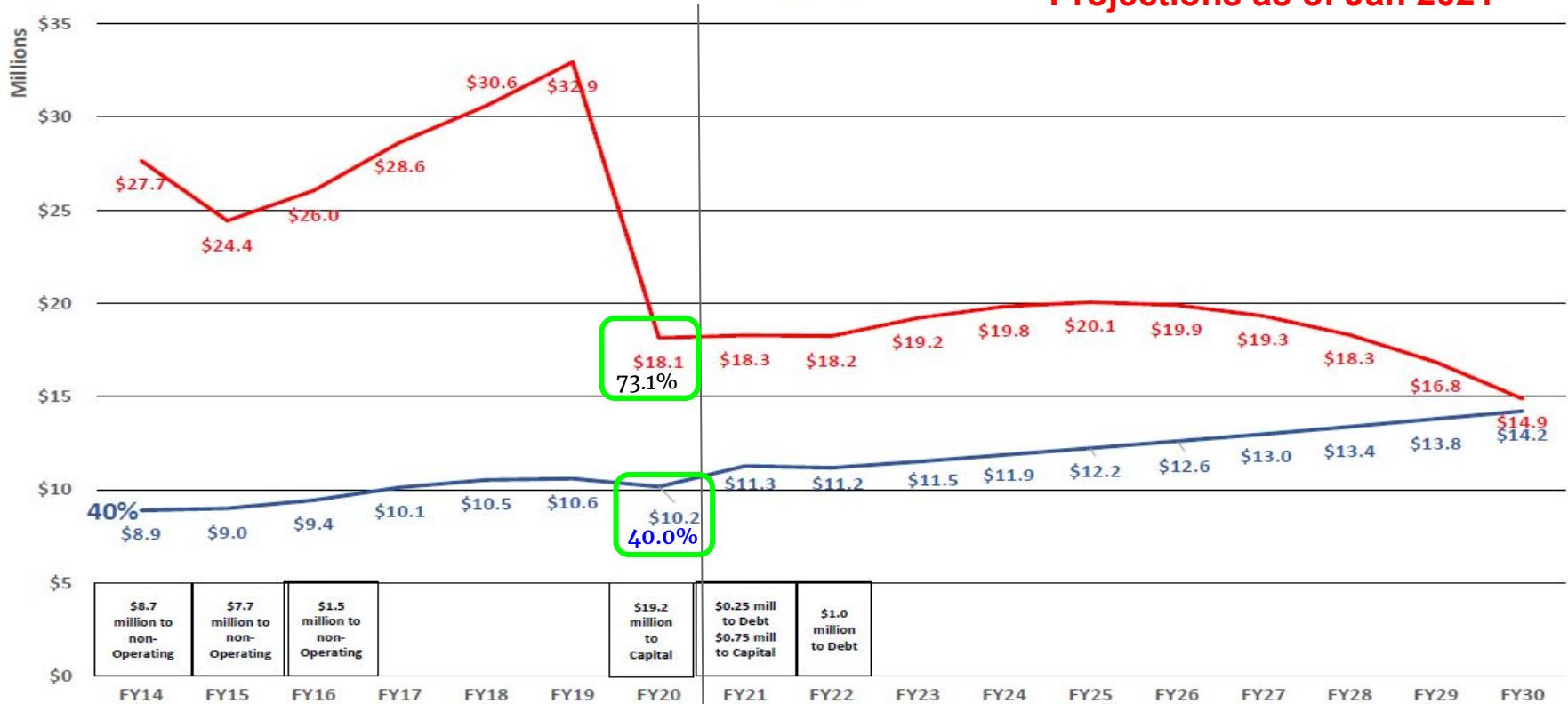


— FY End Operating Funds (Dec '21)

— 40% of Op Expenses

Year-End Operating Balances  
FY14 - FY30

Projections as of Jan 2021



— FY End Operating Funds (Dec '21)

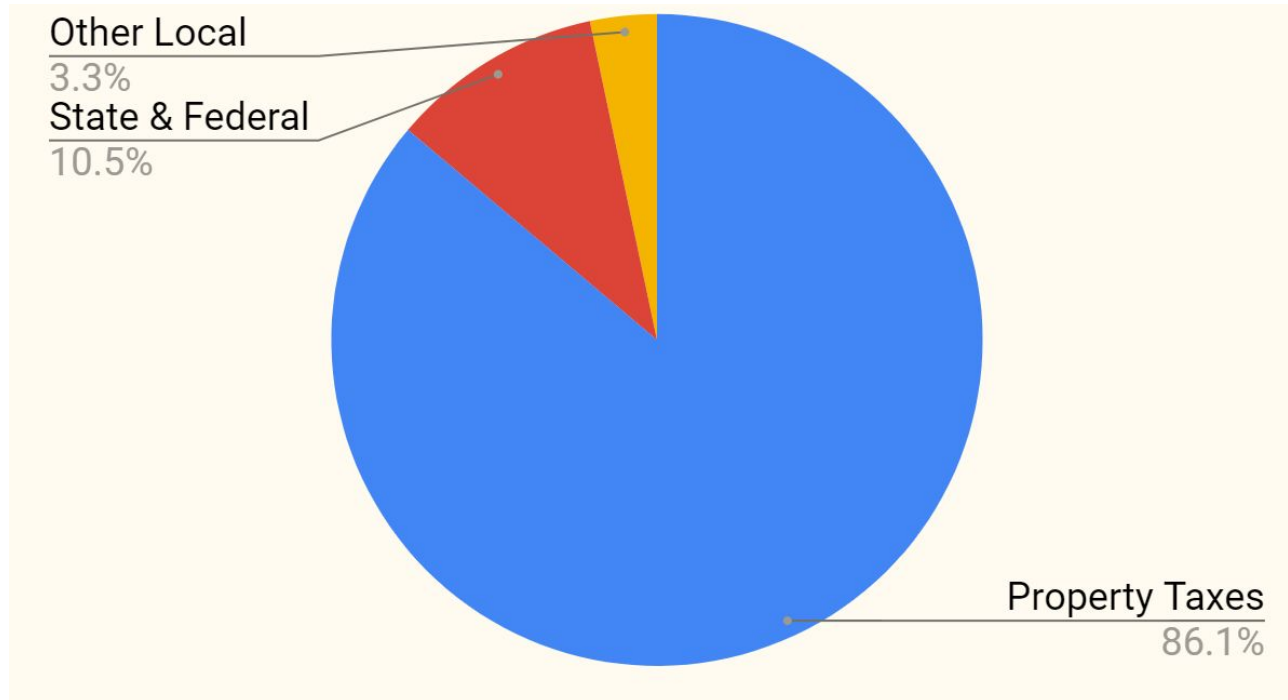
— 40% of Op Expenses



# Revenues



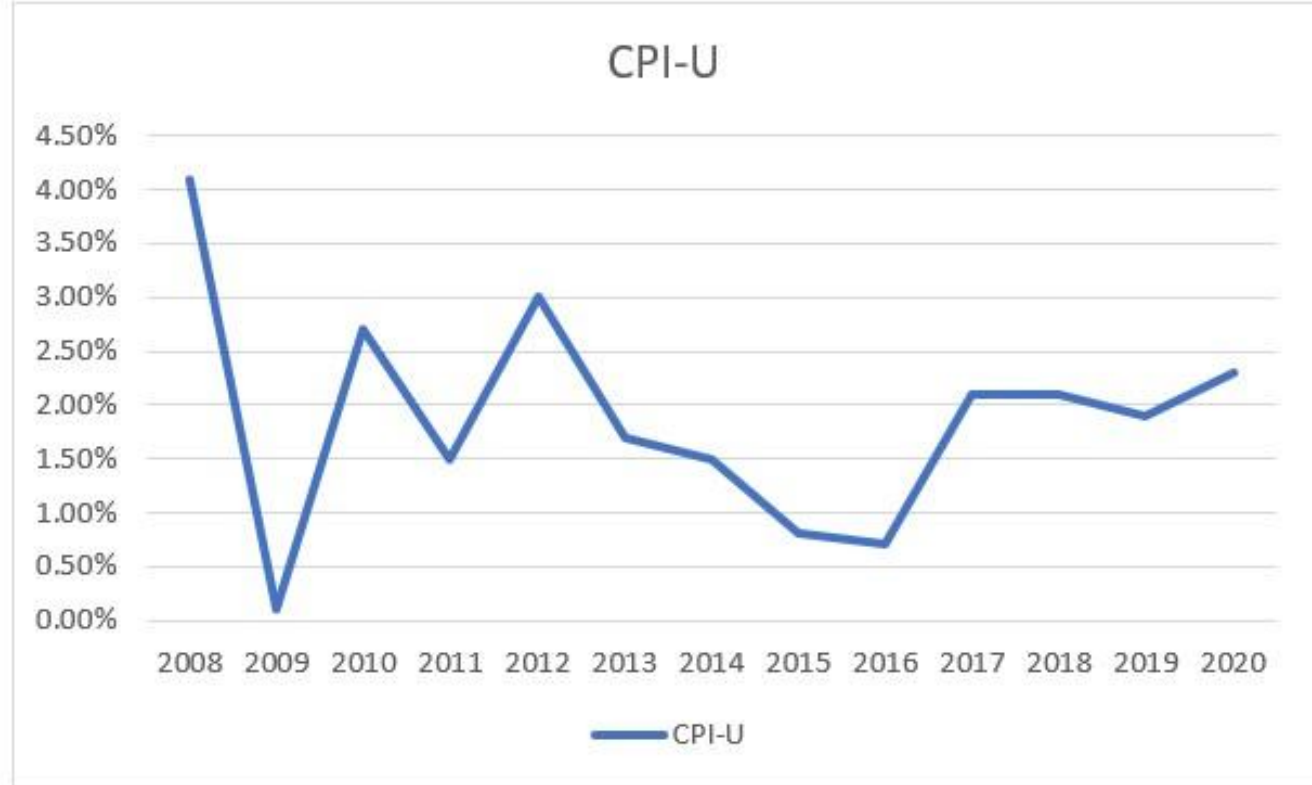
## FY21 Budget: Operating Revenues



# Revenues



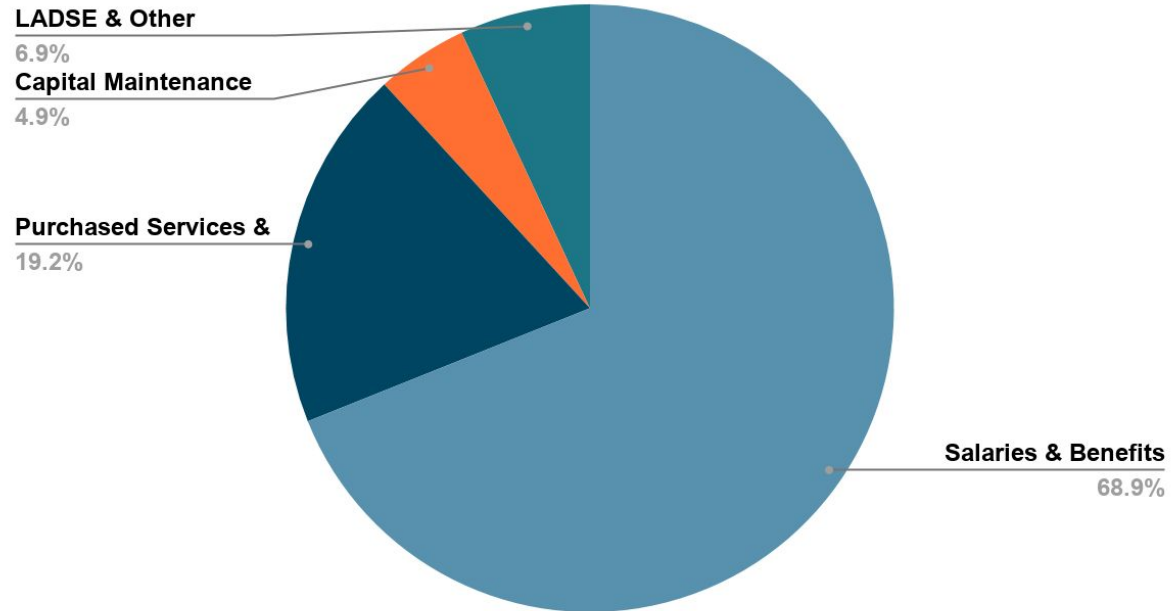
***The inflation rate used when calculating the annual levy has ranged between 0.1% and 4.1% since 2008. The average is 1.85%.***



# Expenditures



## FY21 Budget: Operating Expenditures





# Number of Full Time Equivalent Employees

	2015-16 Audit	2016-17 Audit	2017-18 Audit	2018-19 Audit	2019-20 Audit	2020-21 Budget
<b>Administration:</b>						
Total Administration	10.40	12.00	12.00	12.00	12.00	12.00
<b>Teachers:</b>						
Regular Education	111.53	116.65	118.74	120.31	46.51	46.51
Special Education	16.50	17.00	17.00	17.00	17.00	17.00
Specialists					72.36	72.71
Other	12.50	12.50	12.00	12.00	11.01	11.50
Total Teachers	140.53	146.15	147.74	149.31	146.88	147.72
Total Certified Staff	150.93	158.15	159.74	161.31	158.88	159.72
<b>Support Staff:</b>						
Cafeteria Workers	2.69	2.65	2.65	2.73	2.81	2.80
Library Aides	2.00	2.00	2.00	2.00	2.00	2.00
Mid-Day Assistants	4.67	3.23	3.23	3.97	4.05	4.05
Nurses	3.82	4.82	5.00	5.00	5.00	5.00
Paraprofessionals	41.42	42.42	38.42	37.32	38.82	38.32
Secretaries	8.00	9.00	9.00	8.00	7.87	8.00
Custodians	14.00	14.00	14.00	14.00	15.00	15.00
Total Support Staff	76.60	78.12	74.30	73.02	75.55	75.17
<b>District Staff:</b>						
Total District Staff	14.79	12.79	12.79	12.79	12.73	12.73
Total Staff	242.32	249.06	246.83	247.12	247.16	247.62



# Expenditures

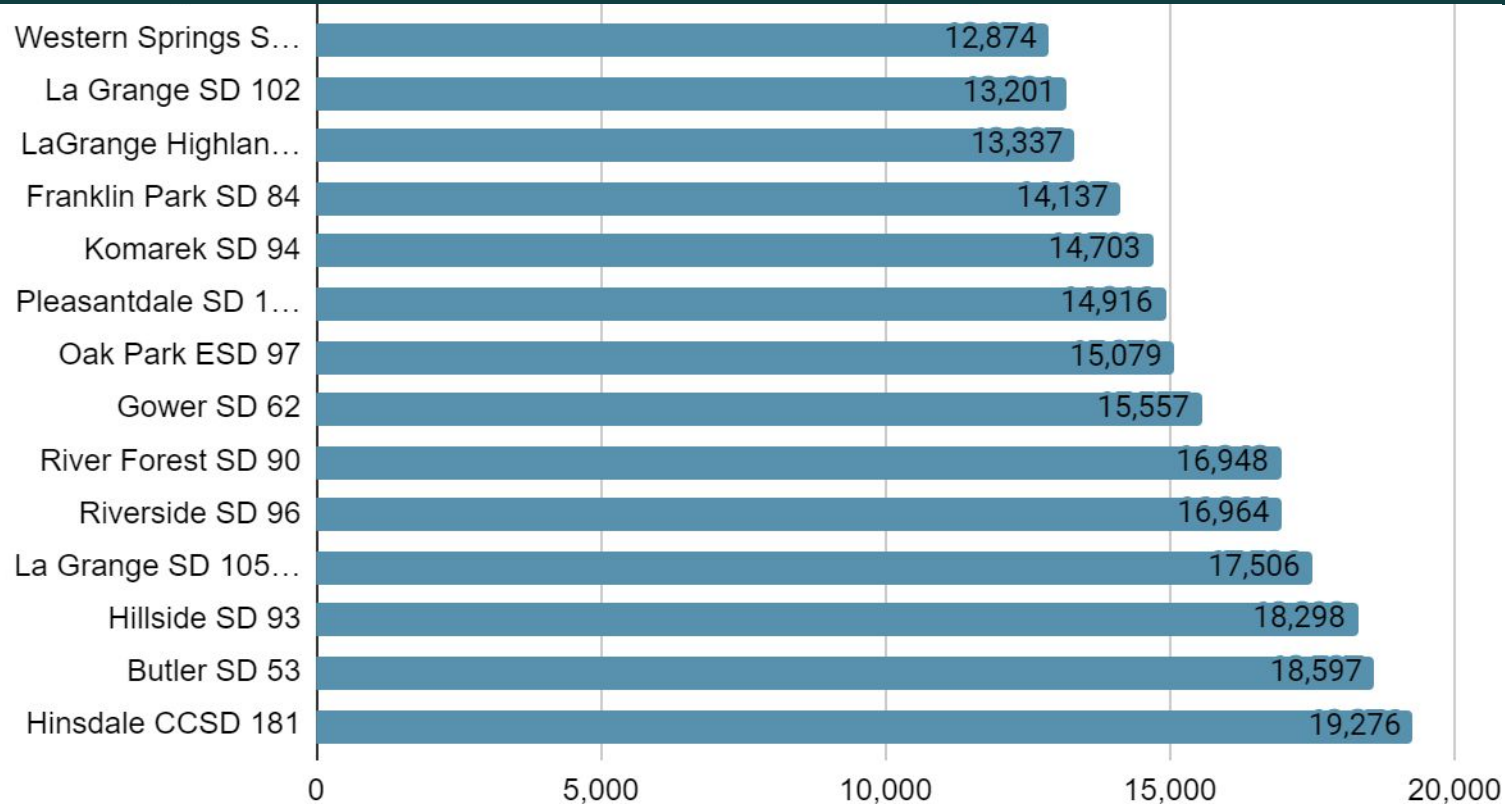


## ENROLLMENT DATA LAST TEN FISCAL YEARS

	2019-20	2018-19	2017-18	2016-17	2015-16	2014-15	2013-14	2012-13	2011-12	2010-11
Kindergarten	165	153	150	150	134	149	160	130	135	163
Grade 1	186	177	160	154	165	177	157	146	176	179
Grade 2	178	171	176	174	176	160	152	180	181	185
Grade 3	168	169	193	186	194	169	192	181	190	151
Grade 4	170	196	192	172	147	205	182	198	155	183
Grade 5	194	192	182	173	212	184	203	155	178	174
Grade 6	198	191	183	212	191	224	168	186	185	172
Grade 7	190	181	216	199	227	166	196	200	184	134
Grade 8	176	212	204	225	167	202	202	182	139	173
Special	<u>79</u>	<u>82</u>	<u>64</u>	<u>82</u>	<u>64</u>	<u>59</u>	<u>49</u>	<u>48</u>	<u>50</u>	<u>51</u>
Total	<u>1,704</u>	<u>1,724</u>	<u>1,720</u>	<u>1,727</u>	<u>1,677</u>	<u>1,695</u>	<u>1,661</u>	<u>1,606</u>	<u>1,573</u>	<u>1,565</u>

# Operating Expense Per Pupil

2018-2019



# Debt



## COMPUTATION OF LEGAL DEBT MARGIN FOR THE YEAR ENDED JUNE 30, 2020

Equalized assessed valuation - Tax Year 2019	\$ 511,395,697
Debt limit - 6.9% of equalized assessed valuation	\$ 35,286,303
Amount of debt applicable to debt limit (1)	<u>2,225,000</u>
Legal debt margin	<u>\$ 33,061,303</u>

**NOTE:** (1) Bonds, debt certificates and capital leases outstanding at June 30, 2020.

# Facilities

## Status and Outlook



### Current Status

- **Feb 2018 Architect Assessment and Long Range Plan**
  - **Improvements and Major Maintenance**
    - **FY20 Capital Improvement Program**
    - **FY21 Capital Improvement Program**
    - **FY22 Capital Improvement Program**
  - **Maintenance and Repair**
    - **Planned for \$1 million per year**
- **Inspections**
  - **Health, Life Safety**
  - **Annual ROE (Regional Organization of Education)**
  - **Preventative Maintenance**
  - **Specialty Inspections (elevators, bleachers...)**
  - **Work Order System (SchoolDude)**



# Facilities

## Status and Outlook



- **FY20 Capital Improvement Program: \$20 million**
  - **Ames**
    - Expansion
    - Space for Early Learners
    - Playground
  - **Blythe Park**
    - Secure Entrance
    - Expansion for 2 section school
  - **Central**
    - Secure Entrance
    - Multi-Purpose Room
  - **Hollywood**
    - Secure Entrance
    - Playground – *postponed*
    - Multi-Purpose Room – *postponed*
  - **Districtwide**
    - Space for Full Day Kindergarten

# Facilities

## Status and Outlook



- **FY21 Capital Improvement Program: Projects planned or being considered**
  - **Hauser**
    - Auditorium- sound and light
    - Update Fire Protection
  - **Central**
    - Update Fire Protection
  - **Blythe Park**
    - Repair Parking Lot
  - **Hollywood**
    - Playground – *carried over from FY20*
    - Multi-Purpose Room – *carried over from FY20*
- **FY22 Capital Improvement Program: Projects being considered**
  - **Hauser/ Central Campus**
    - Reconfigure to separate Play and Parking

# Finance and Facilities

## Next Steps



- **Facilities**
  - **Facility Advisory Committee**
    - Review and recommend projects for FY21 CIP
    - Recommend an updated Building Safety Assessment & Maintenance
  - **Board of Education**
    - Approve projects to be included for FY21 CIP
    - Approve (above)contract for an updated Facility Assessment
- **Finance**
  - **Contract Negotiations**
    - Riverside Educational Council
    - Teamsters (Custodians)
  - **FY22 Budget**
  - **FY21 Audit**
  - **TY2021 Tax Levy**
  - **Update Long-Term Projections**

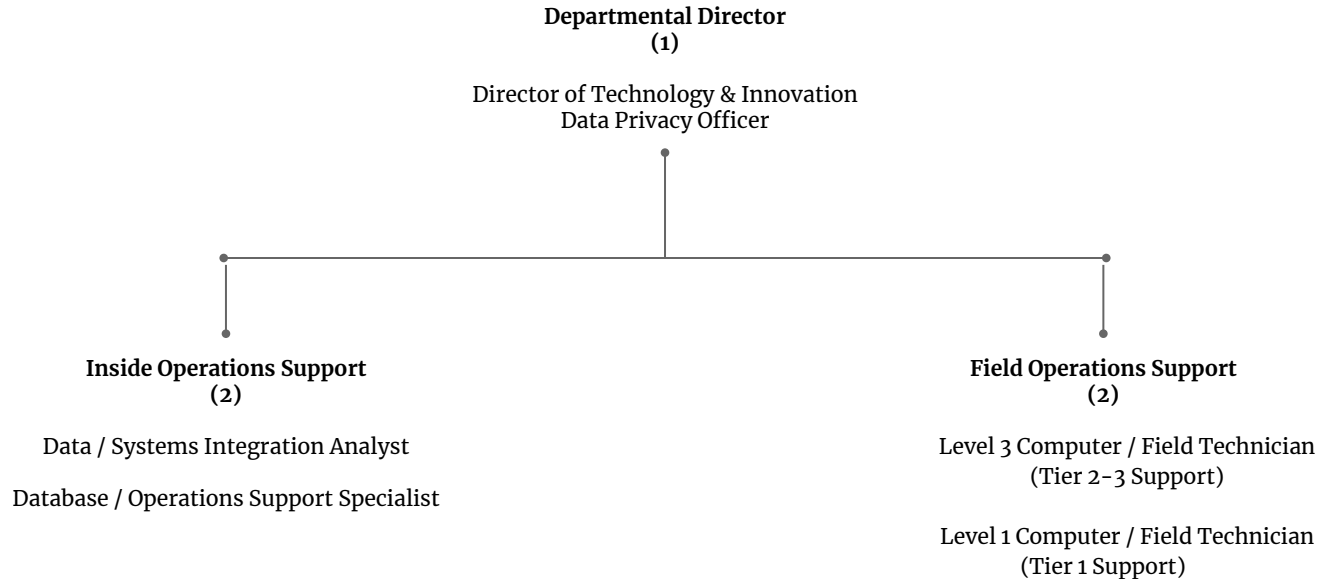


# Riverside School District 96 Technology Metrics



Strategic Planning 2020-2021

# Technology Department Overview



# Technology Department: Services



## Inside Operations Support

District Operations Applications & Databases (18)  
District Instructional Applications & Databases (28)

Application/Resource Evaluation & Compliance Management

Application Rostering

High Stakes Assessment System Management & Training

Local Assessments Testing System Management & Training

State Reporting Requirements (ISBE)

Federal Reporting Requirements

Office365/Email System Management & Monitoring

eDiscovery/Email Archive System Management

Online Registration & Residency Verification

Parent/Teacher Conference Sign-Up Portal

Website Management & Design

District Calendar Management



Telecommunications & Internet Management/Monitoring

E911 Compliance Management

Content Filtering Systems Management (CIPA)

WiFi Management & Monitoring

Network Monitoring & Security

G-Suite/Google Platform Management

Student Data Privacy Enforcement

Student Cyber-Safety Monitoring and Management

CRM / Ticketing System

iOS Device Configuration, Deployment, Remote Management & Repair  
(700+)

Security Camera System Management & Monitoring

Facilities Access Control System Management & Monitoring

Printer/Copier Management

Asset Management

# Technology Department: Services



## Field Operations Support

District Operations Device Management  
District Instructional Device Management

MacOS Device Configuration, Deployment, Remote Management & Repair  
(280+)



Chrome OS Device Configuration, Deployment, Remote Management & Repair  
(1400+)

iOS Device Configuration & Deployment  
(700+)



Instructional Device Deployment & Management  
Projectors (120+) & Document Cameras (120+)

Windows Device Configuration & Deployment



High Stakes Assessment System Device Readiness

Local Assessments Testing System Device Readiness



Uninterrupted Power Supply (UPS) Deployment, Configuration & Management

Server & Desktop Anti-Virus Management & Monitoring

Telecommunications & Internet Hardware Management/Monitoring

ShoreTel Phone System Management & Phone Deployment

E911 Compliance Management

WiFi Hardware Deployment, Management & Monitoring  
(135+)

Network Hardware Monitoring & Security

Windows Server Management & Monitoring

Windows Active Directory Management & Monitoring

Security Camera System Management & Training

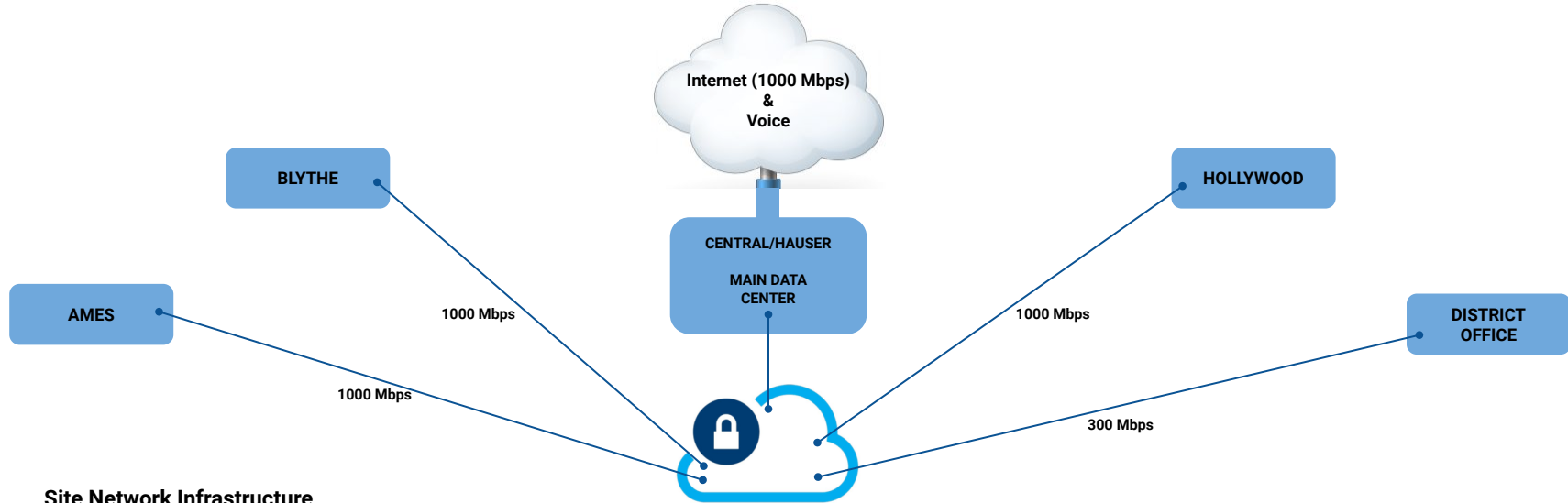
G-Suite/Google Platform Management

Printer/Copier Deployment & Management  
(150+)

Asset Management

Food Service Kiosk Deployment & Management

# Technology Department: Network



## Site Network Infrastructure




Switching (1000 Mbps)

Wireless Access Points (802.11ac)



# Technology Department: Devices

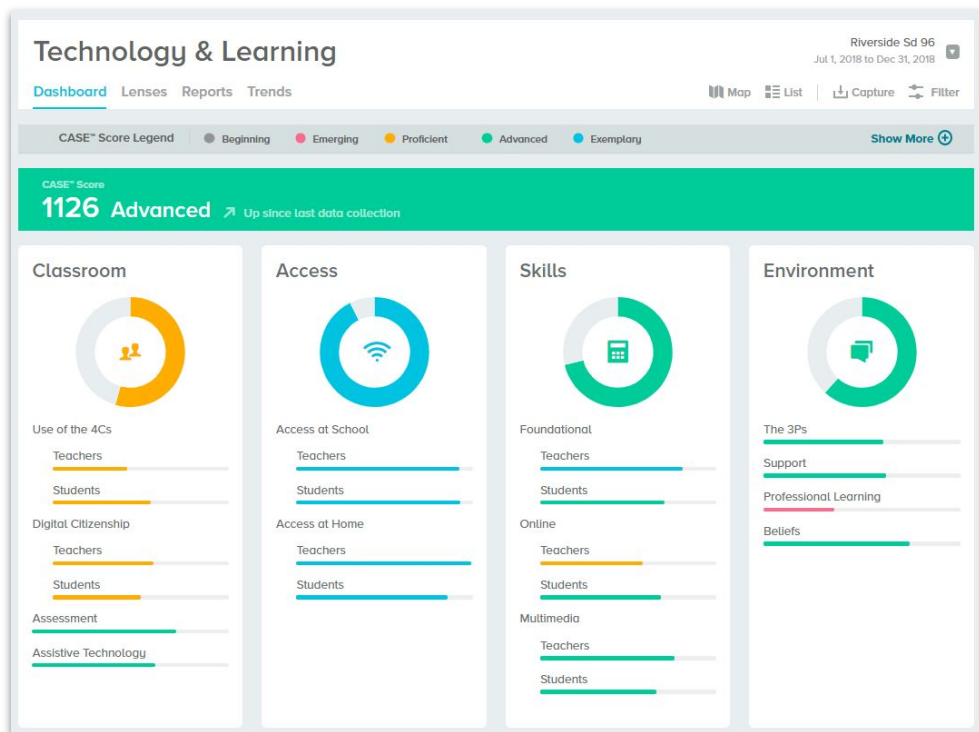


	 MacOS	 iOS	 Chrome OS	 Windows OS
<b>Certified Staff</b>	255	50		13
<b>Classified Staff</b>	20	3	12	3
<b>Paraprofessional Staff</b>			32	
<b>Students: Grades K, 1 &amp; 2</b>		575+		
<b>Students: Grades 4, 5, 6, 7 &amp; 8</b>			1200+	15

**D96 Student Device Ratio: > 1:1**

**User Issued Devices + Device Spares + Content/Classroom Specific Devices**

# Technology Department: BrightBytes Survey



- **Administered in Fall '18**
- **Focused on (4) Main Areas**
  - Classroom (Proficient)
  - Access (Exemplary)
  - Skills (Advanced)
  - Environment (Advanced)
- **Action Item: Targeted Professional Development**
  - Teacher & Student Use of the 4Cs
  - Teacher & Student Digital Citizenship
- **Re-Administer in Fall '21**
- **What are the 4Cs?**
  - **Communication**
  - **Collaboration**
  - **Critical Thinking**
  - **Creativity**

# Technology Department: BrightBytes Survey



## COMPARISON TO WEST SUBURBAN COOK & ILLINOIS SCHOOLS

### Technology & Learning

DISTRICTS	DATE RANGE	OVERALL	CLASSROOM	ACCESS	SKILLS	ENVIRONMENT
Riverside Sd 96	Jul 1, 2018 to Dec 31, 2018	1126 ↗	1072 ↗	1263 ↗	1156 ↗	1109 ↗
	Jul 1, 2016 to Dec 31, 2016	1080	1002	1218	1138	1080

SERVICE AGENCY	DATE RANGE	OVERALL	CLASSROOM	ACCESS	SKILLS	ENVIRONMENT
West Suburban Cook	2020 - Present	1143 ↗	1093 ↗	1258 ↗	1159 ↗	1146 ↗
	2019 - 2020	1118	1058	1246	1155	1113
	2018 - 2019	1103	1042	1234	1141	1099

Teachers	Teachers	Teachers
Illinois	As of Jan 7, 2021	1091 1026 1221 1132 1090

### As of Fall 2018

- Ahead of West Suburban Cook School Districts Overall Average
- Ahead of Illinois School Districts Overall Average
- All Categories & Overall

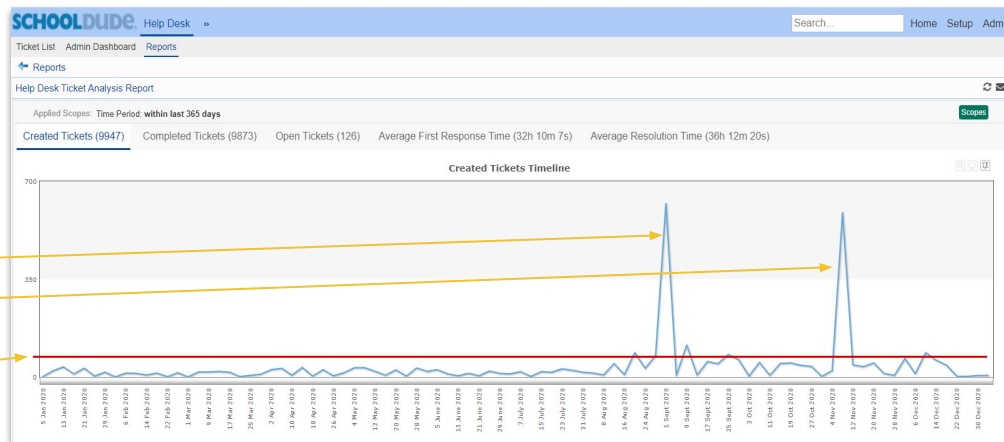
### As of January 7, 2021: 2018 Scores

- Ahead of Current Illinois School Districts Overall Average
- All Categories & Overall

# Technology Department: Support



- CRM/Ticketing System: SchoolDude
- Overall 2020 Statistics
  - Created Tickets: 9947
  - Completed Tickets: 9873
  - Average Response Time: 32h
  - Average Resolution Time: 36h
- Notable Ticket Spikes
  - Start of School Year
  - Raptor Self-Certification Service
- Notable Trends
  - Baseline Ticket Volume
    - Move to Full 1:1 Take-Home Program
    - Remote Support
    - Parent Support
    - Support of Additional Services
- Identified Needs: New CRM/Ticketing System



# Technology Department: Support



- **Overall 2020 Statistics**
  - Created Tickets: 9947
  - Completed Tickets: 9873
  - Average Response Time: 32h
  - Average Resolution Time: 36h
- **January – June 2020**
  - Created Tickets: 2911
  - Completed Tickets: 2848
  - **Average # Tickets / Month: 485**
  - Average Response Time: 36.5h
  - Average Resolution Time: 40.5h
- **August – December 2020**
  - Created Tickets: 6514
  - Completed Tickets: 6463
  - **Average # Tickets / Month: 1303**
  - Average Response Time: 27.25h
  - Average Resolution Time: 31.25h

**270%  
Increase**

