

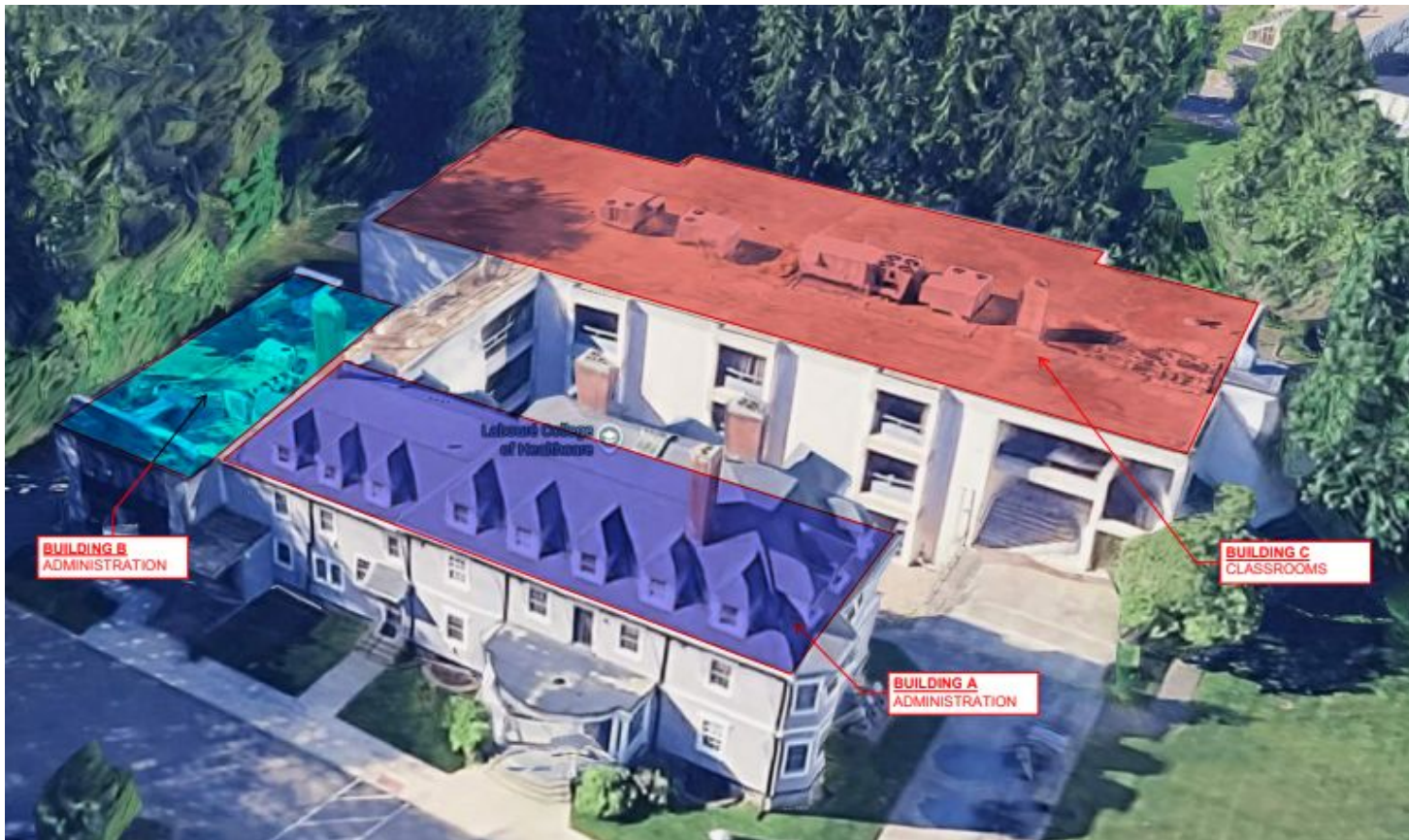
# Laboure College Site

Milton Public Schools Overview 2.0

June 3, 2026



# Laboure College Site Overview



# Site Potential

## Building A - District Personnel

- Central Office
- Special Education Department
- Tech Department
- Finance Department

## Building C - Classrooms

- 12 classrooms (prior to potential renovations)

## Building B - Offices and Small Learning Areas

- OT/PT
- Nurse
- Custodial space
- Teachers Room





# Context of Laboure Option

The Milton Public Schools has been experiencing space challenges at the elementary level for the last several years.

This need has been established with the work over the last several years by Milton's School Building Committee.

The School Building Committee has entered into the MSBA process with goal of determining if a new building or major renovation can create more space for our PreK-12 district.

Laboure College on Adams Street in Milton will be going up for sale in August 2026. The Town is reviewing the possibility of purchasing the Laboure campus of three buildings in hopes that this campus and building space may be an alternative to the MSBA project currently underway to provide space relief for the school department.

The Town has asked the school department to provide a high level analysis of the viability of this option and to discuss what school programming scenarios would be considered if the purchase was explored and successful.

# Goal and Timeline - June 3, 2026

## Updated Goal of Presentation-

*We will revisit our May 20, 2026 options, and bring forward recommendation(s) to School Committee in order to provide the Architectural firm our initial program option to review the space needs assessment and potential program fit at the site.*

## Present Timeline -

**By the end of June** - The School Department / School Committee would need to provide an initial programming option.

**In July** -The Town Administrator's Office will consult with the School Building Committee and the School Committee to see if the options provide sufficient capacity to achieve the long standing space issues for the Milton Public Schools. This analysis will be supported by a contracted architectural firm.

**In August** - If purchasing this campus will have a positive impact on MPS space challenges, the Town will discuss the mechanism for funding and purchase.

# Decision Making Rubric

Consideration	Yes/No	Notes
Does the grade/program address space needs at MPS?		
Can the grade/program fit into the Laboure buildings with additional renovation?		
Is the grade/program an educational fit for the site?		
Is there an operational cost associated with the particular grade/program?		

# Options Considered at May 20, 2026 School Committee Meeting

At our last School Committee meeting with discussed the following options and viewed them thru a consistent rubric:

1. New Elementary K-5 school
2. Move Grade 9 as a self standing one grade school
3. Move Grade 8 as a self standing one grade school
4. Move Grade 5 as a self standing one grade school
5. Move Kindergarten as a self standing one grade school
6. Move Pre K only as a self standing early childhood center
7. Move Pre K and Kindergarten students to create an Early Childhood Center

The School Committee also discussed creating a new K-6 school and making all other existing elementary schools K-6 schools.



## Options Considered at May 20, 2026 School Committee Meeting- Assessment

At our last School Committee meeting with discussed the following options and viewed them thru a consistent rubric:

1. New Elementary K-5 school.

This would create space by taking students from each school, redistricting our current neighborhood maps and home schools, increase the impact on resources like world language, and other specials and support services. We would also need to assess how many class sections in each school by grade level.

2. Move Grade 9 as a self standing one grade school.

Does not increase space for district and we do not want to break up our 9-12 high school experience.

3. Move Grade 8 as a self standing one grade school.

This would result in a 5-7 school at PMS and grade 8 would be an isolated grade experience for students. This creates some space at elementary level and it is not ideal for a one grade isolated school experience.

4. Move Grade 5 as a self standing one grade school.

This would result in K-4 elementary schools and grade 5 would be an isolated grade experience for students. This creates some space at elementary level.



## Options Considered at May 20, 2026 School Committee Meeting- Assessment

*Continued ....*

5. Move Kindergarten as a self standing one grade school.

This option would result in more space in our elementary schools and we feel it would be beneficial to include our pre K students in order to create an early childhood academic culture and experience.

6. Move Pre K only as a self standing early childhood center.

This would not provide the same space savings and may not be an efficient use of the space for the current 120 (some part time) students it would serve.

7. Move Pre K and Kindergarten students to create an Early Childhood Center

This option saves space at all of our elementary schools. This would create an educational opportunity to serve our youngest learners in a unique environment designed exclusively for this age group. This option provides a limited operating cost impact due to our existing Pre K structure and staffing that would transfer their roles to also support our kindergarten students.



## Options Considered at May 20, 2026 School Committee Meeting- Assessment

*Continued ....*

The School Committee also discussed creating a new K-6 school and making all other existing elementary schools K-6 schools.

This would create space at our elementary school by reducing students in each grade at each school and redistributing them to a new 5th elementary school. This would entail redistricting our current neighborhood maps, increase the impact on resources like world language, and other specials and support services. We would also need to assess how many class sections in each school by grade level. This option would also create space at PMS. Given the grade 6 Team format their would need to be a

\* Please note that all options considered would include moving Central Office staff and departments currently located at Milton High School to the Laboure site and would be located in Building A.

This move would result in MHS with a significant increase of space.

# Leadership Team Recommendation

At our last School Committee meeting with discussed the following options and viewed them thru a consistent rubric:

1. ~~New Elementary K-5 school.~~
2. ~~Move Grade 9 as a self standing one grade school.~~
3. ~~Move Grade 8 as a self standing one grade school.~~
4. ~~Move Grade 5 as a self standing one grade school.~~
5. ~~Move Kindergarten as a self standing one grade school.~~
6. ~~Move Pre K only as a self standing early childhood center.~~
7. ~~New K-6 school and making all other existing elementary schools K-6 schools.~~

**The MPS Leadership Team recommends this option to be considered for our initial program option:**

Move Pre K and Kindergarten students to create an Early Childhood Center

# Why Preschool and/or Kindergarten Is a Fit

- Creating a space for our youngest learners provides students and families with a focused and strong start to learning at Milton Public Schools.
- Early literacy and foundational learning can be provided consistently and deeply on one site.
- Service delivery for students who need it.
- Students experience the diversity of their peers at the earliest age to build connection and belonging for all.
- The site can be retrofitted to service the unique academic, social emotional, and physical needs of our young learners.
  - Playgrounds
  - Bathrooms
- Family Center
- All K students together at one school eliminates the sometimes challenging need to move home schools when the French program option becomes available.

# Questions

