

LEA Name : Coatesville Area SD
Address : 3030 CG Zinn Rd
Thorndale , PA 19372

County : Chester
AUN Number : 124151902
LEA Type : SD

Annual Financial Report Accuracy Certification Statement

For Fiscal Year Ending
6/30/2025

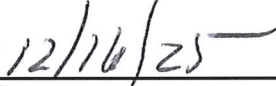
Pennsylvania Department of Education
&
Office of Comptroller Operations

PDE-2056: Intermediate Unit
PDE-2057: School District, AVTS/CTC, Charter School,
and Special Program Jointure

CERTIFICATION: By signing this page I agree that the electronic data submitted is a complete and accurate statement of the financial operations and status of the local education agency for the fiscal year. It has been prepared in accordance with generally accepted accounting principles and established Commonwealth of PA reporting guidelines.




Chief School Administrator Signature



Date



Board Secretary Signature



Date

Pamela Kiley

Contact Person

(610)466-2400 Ext :82481

Contact Person Telephone Number

kiley@casdschools.org

Contact Person E-mail Address

Contact Person Fax Number

Audit Certification
Annual Financial Report:
For Fiscal Year Ending **6/30/2025**
(Pursuant to PA School Code Section 218(b))

LEA Name : Coatesville Area SD
AUN Number : 124151902
County : Chester

Audit Certification Due: 12/31/2025

This certification is applicable to the Annual Financial Report data submitted through the Consolidated Financial Reporting System (CFRS).

CERTIFICATION: By signing this page I agree that the financial statements of the school have been properly audited as noted above pursuant to Article XXIV, and in the auditor's professional opinion, the Annual Financial Report (PDE-2057) submitted through CFRS is materially consistent with the audited financial statements.

Chief School Administrator


Signature _____ Date 12/16/25

Board Secretary


Signature _____ Date 12/16/2025

Pamela Kiley

Contact Person

kileyp@casdschools.org

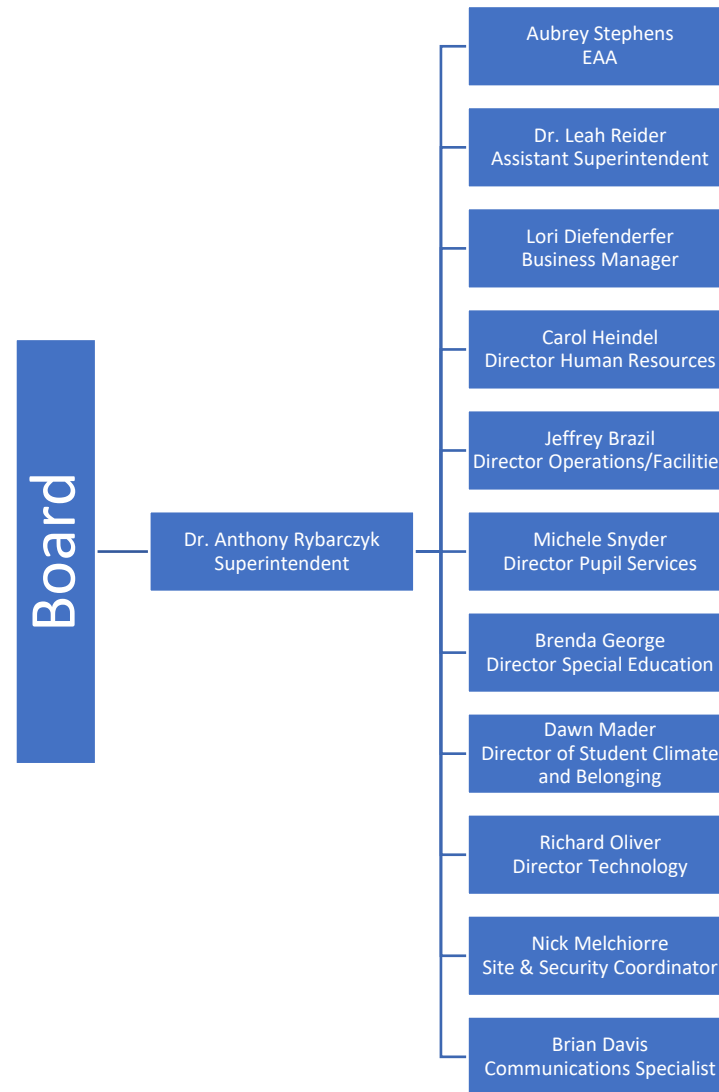
Contact Person E-mail Address

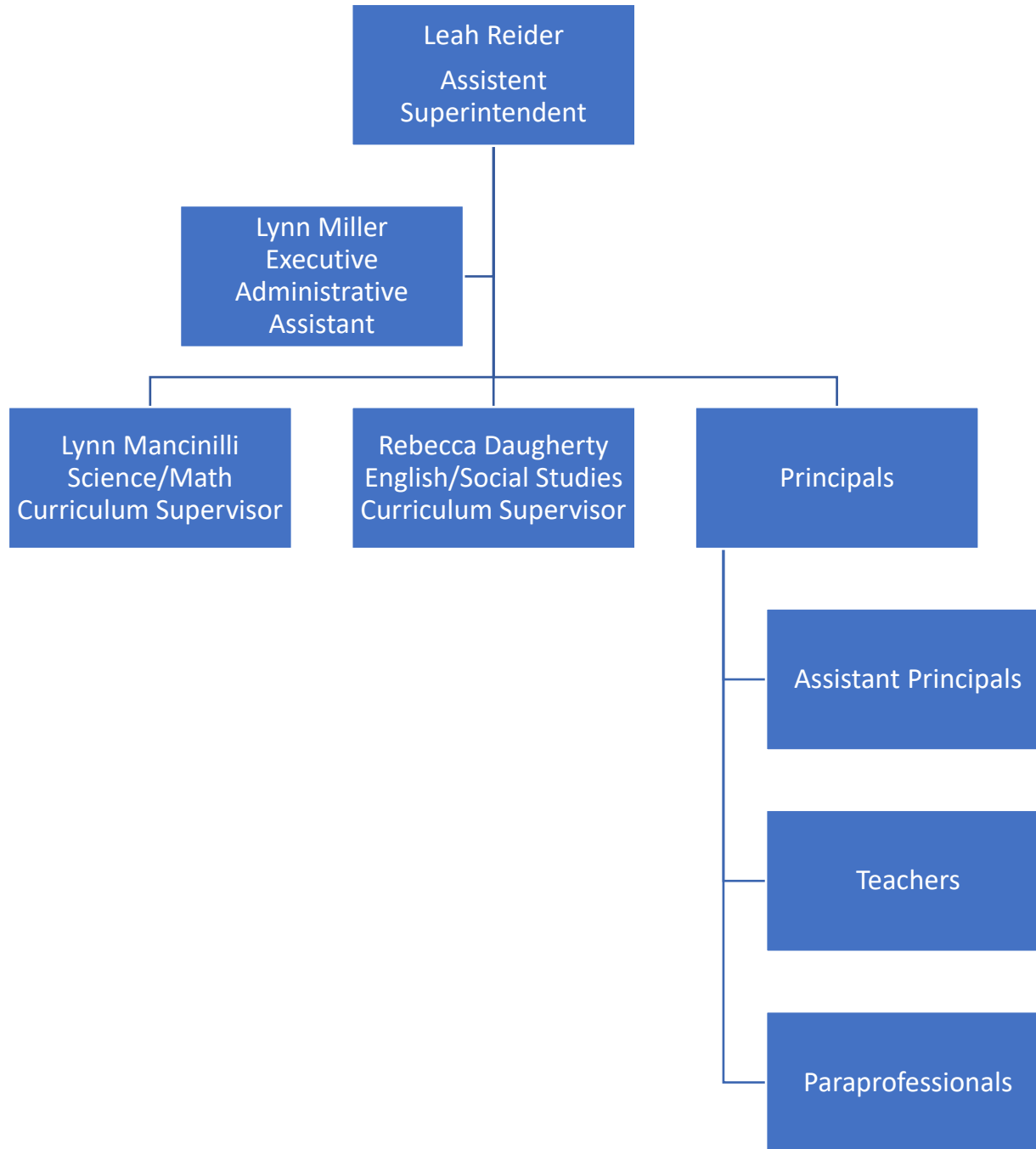
(610)466-2400

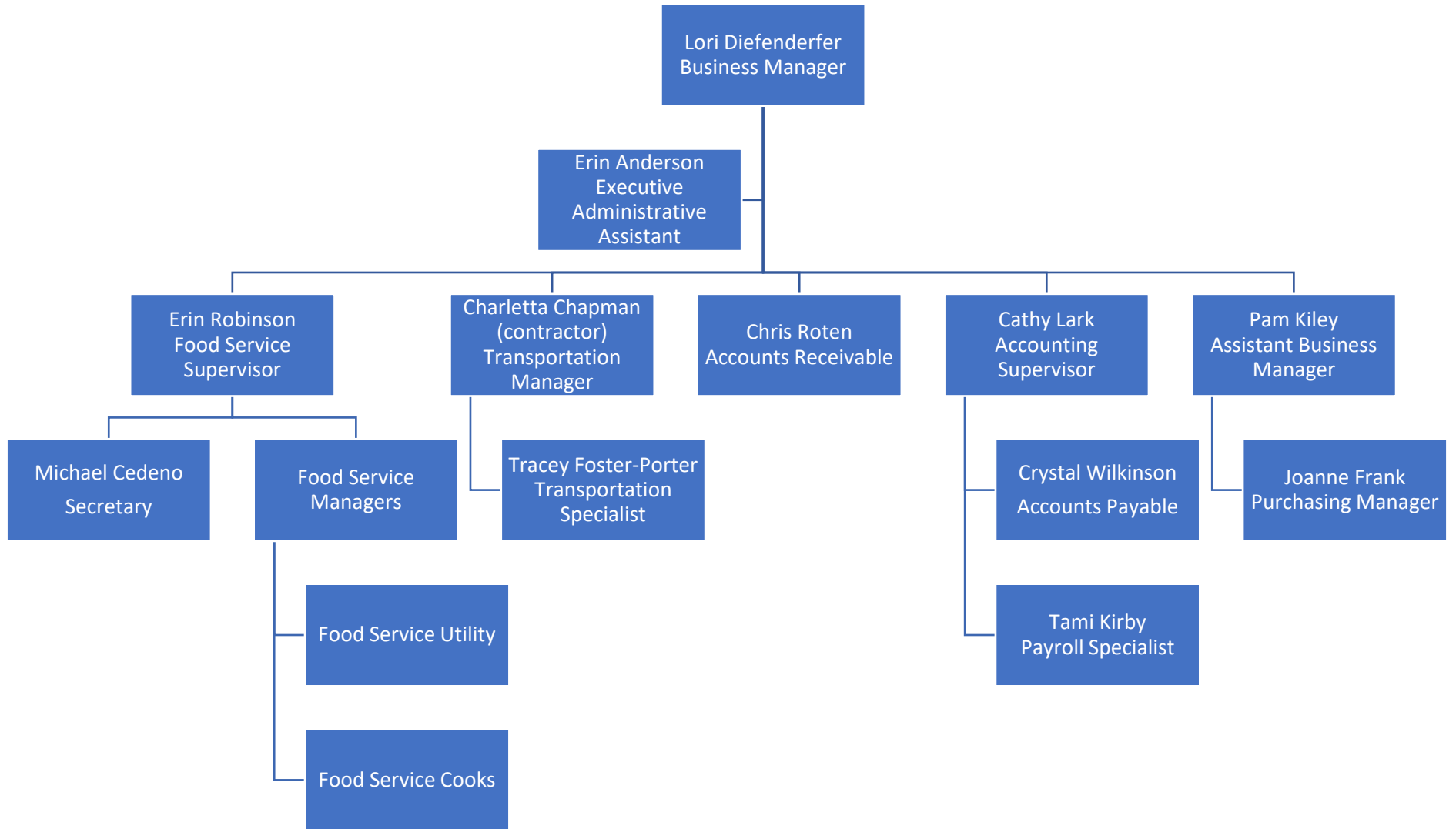
Ext :82481

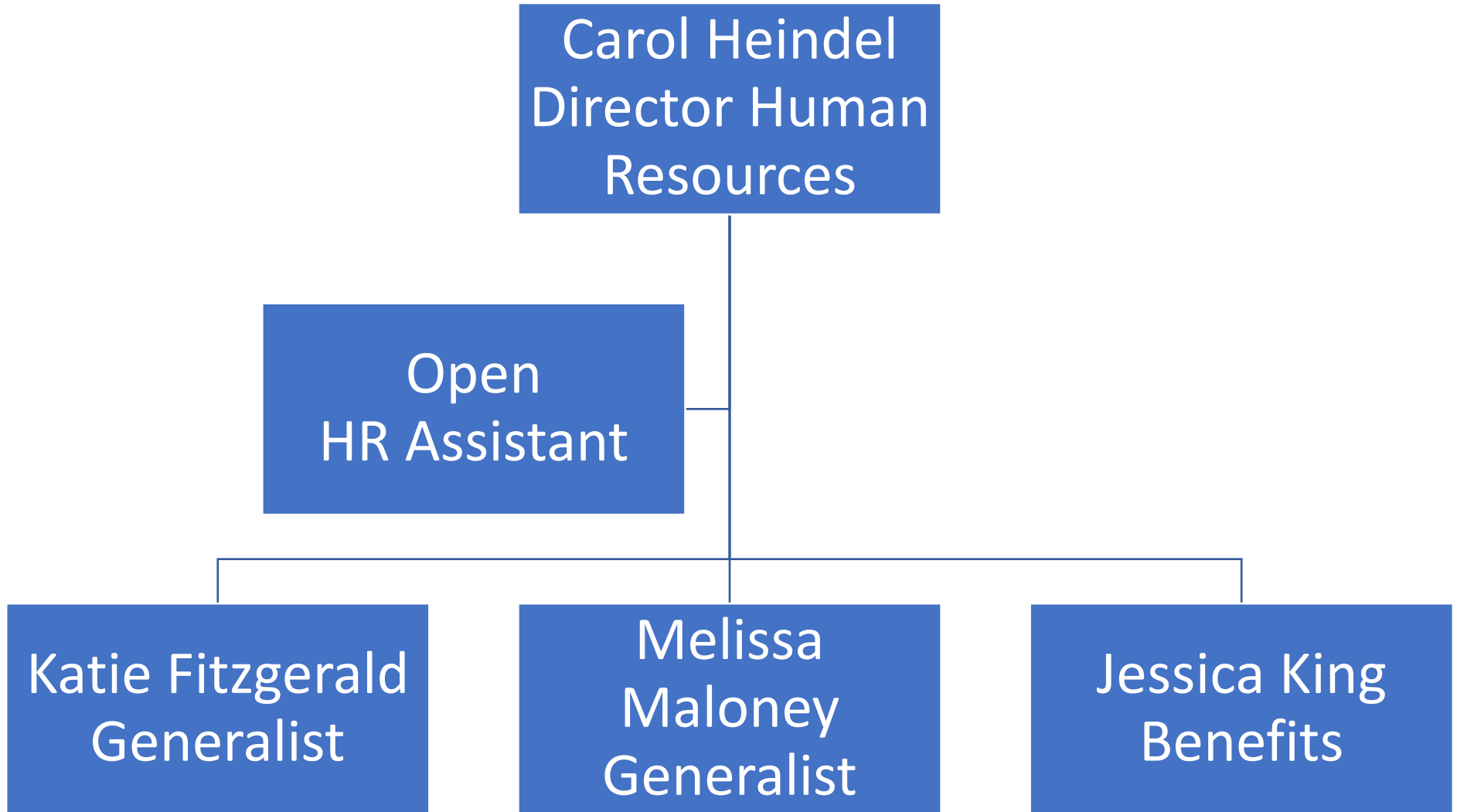
Contact Person Telephone Number

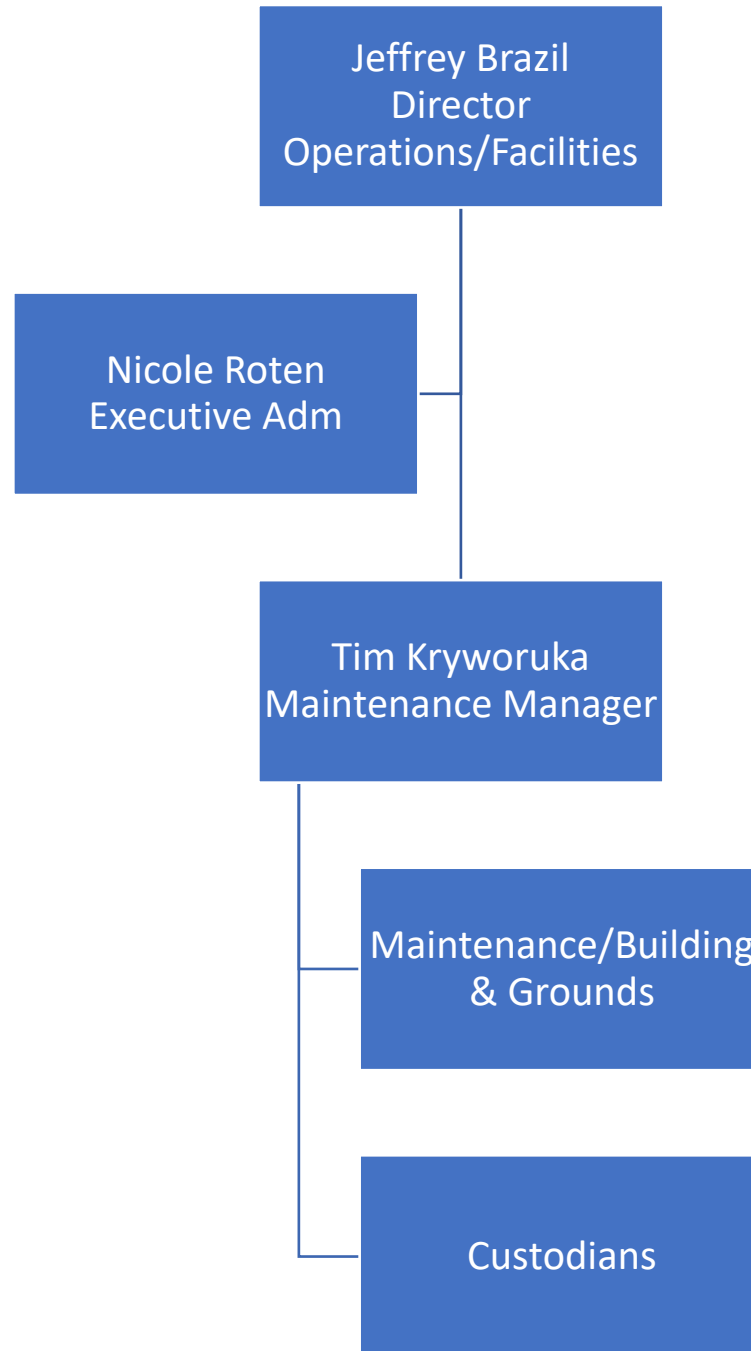
Contact Person Fax Number

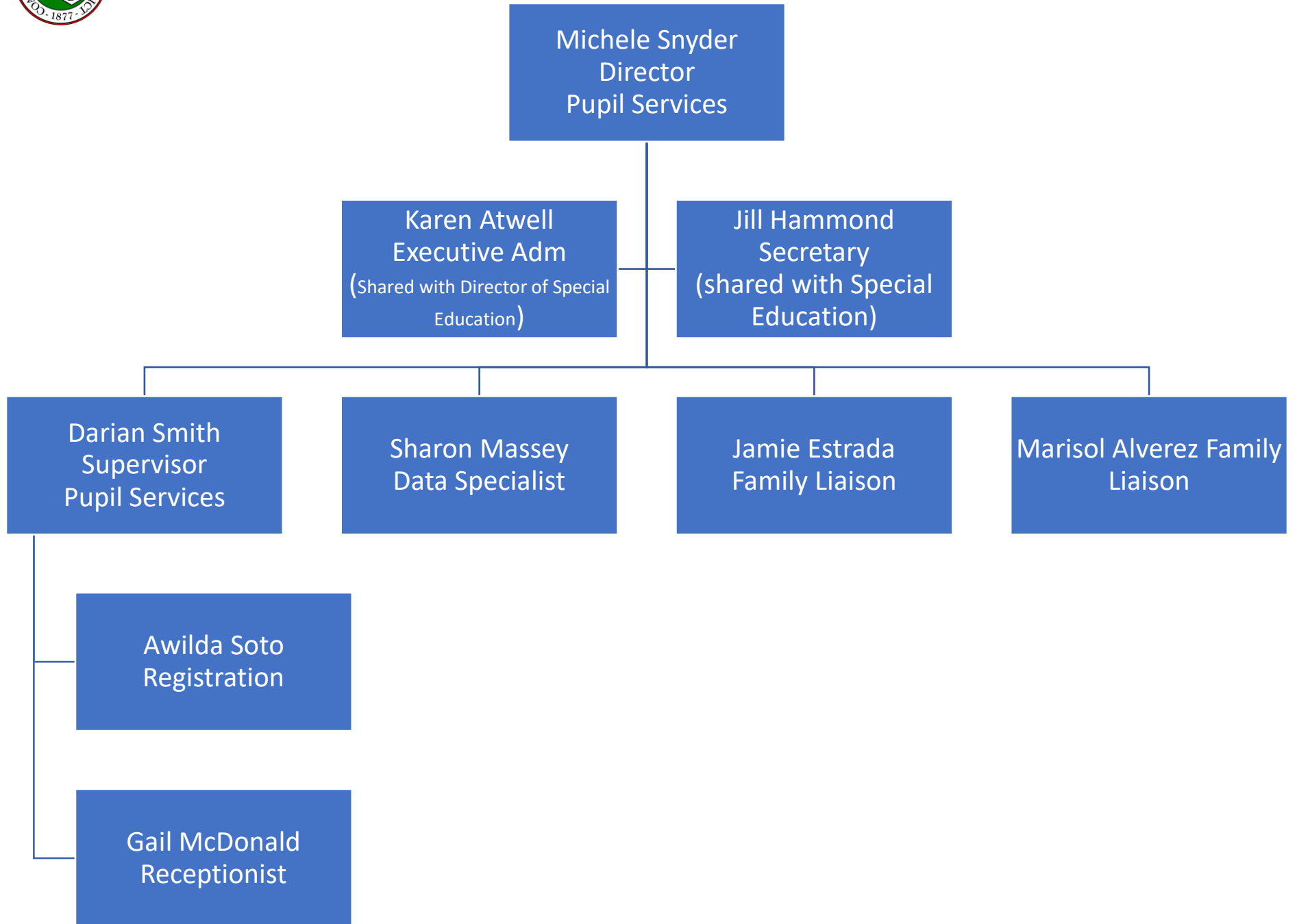


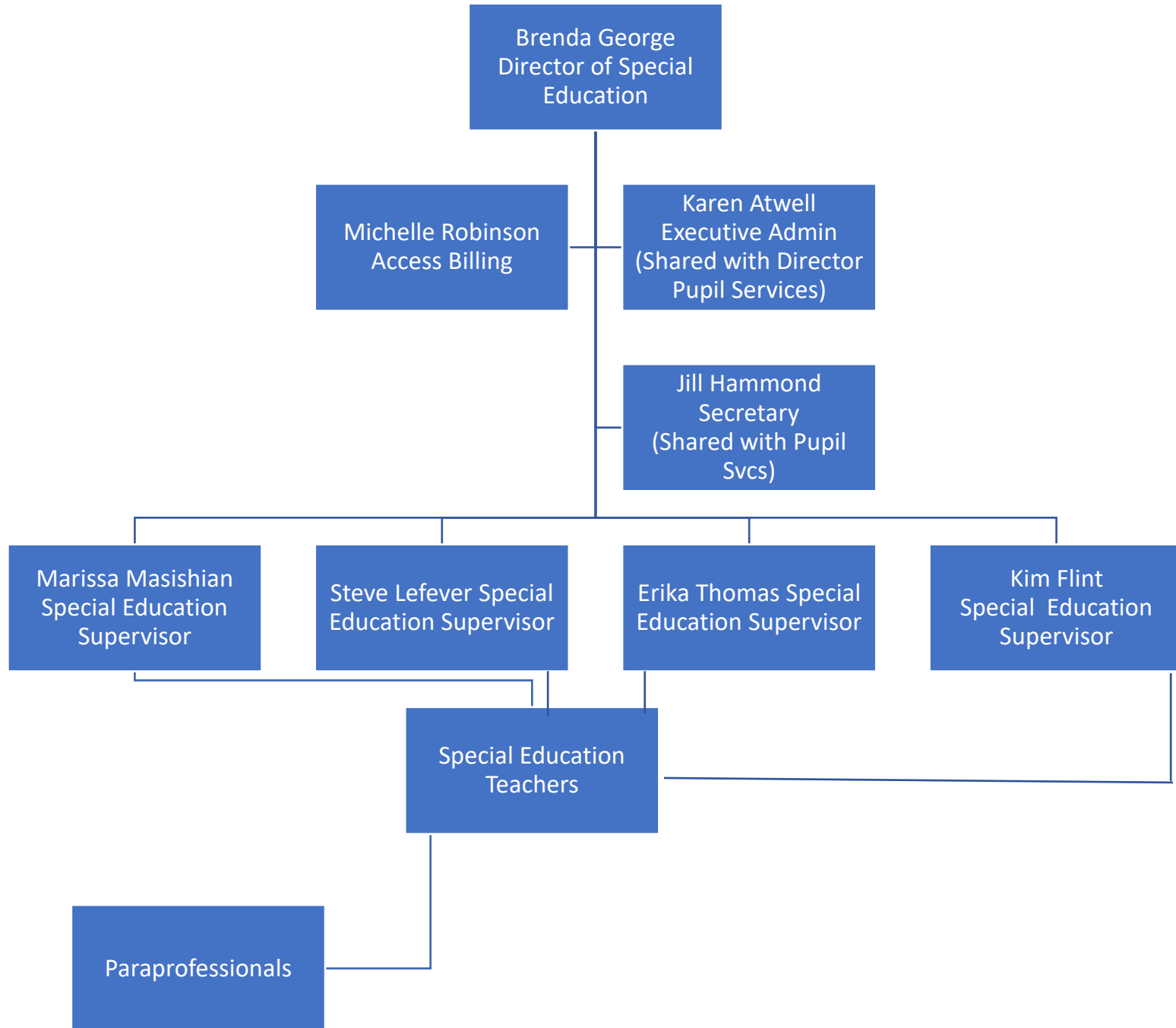








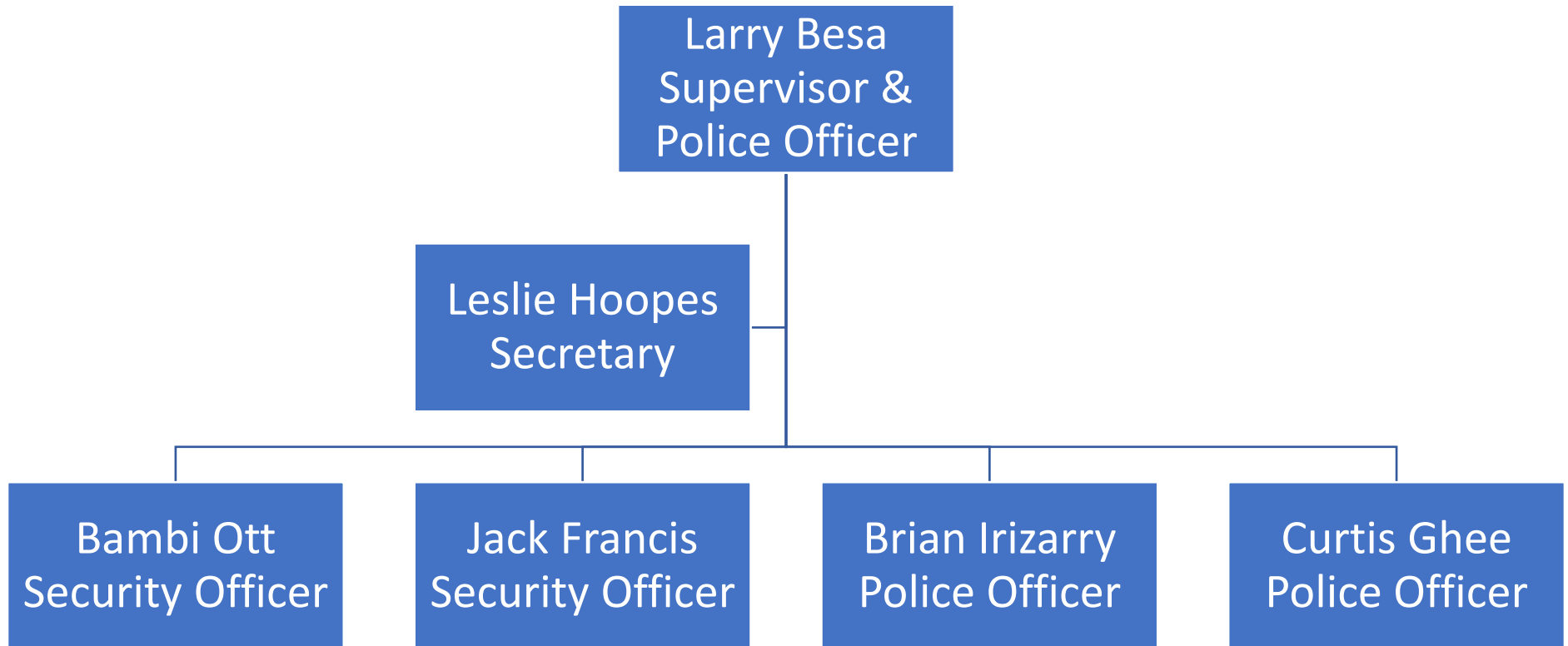


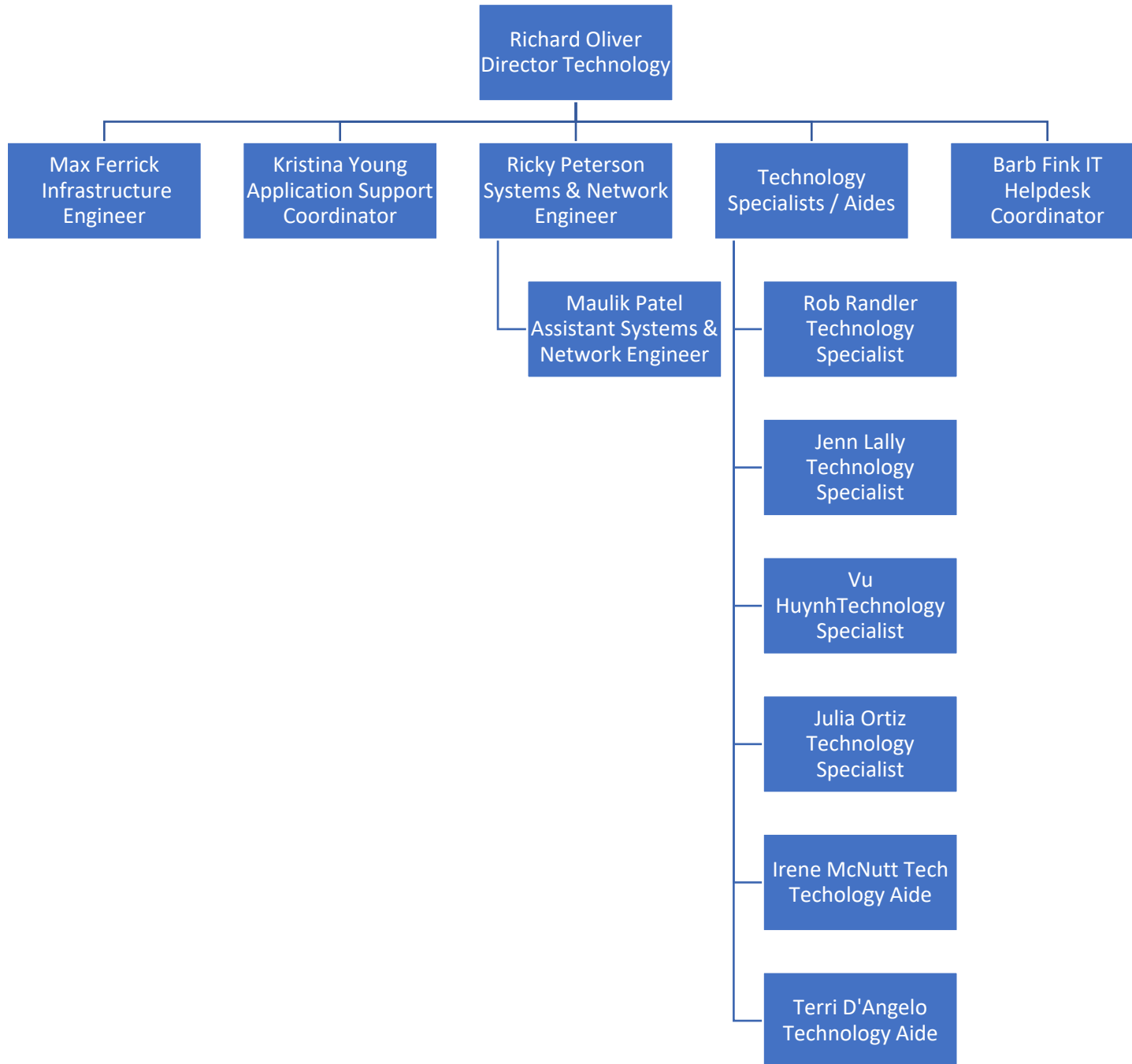




Nick Melchiorre
Sight & Safety
Coordinator

Leslie Hoopes
Secretary





COATESVILLE AREA SCHOOL DISTRICT

ADMINISTRATIVE REGULATION

APPROVED: June 27, 2017

REVIEWED: April 11, 2023

622-AR-3. CAPITAL ASSET TYPE AND USEFUL LIFE CHART

TYPE	YEARS
Fixed Equipment	15
Office Equipment	5
Computer Equipment	3
Computer Software	3
Audio/Video/Telecom	5
Machinery and Tools	10
Furniture and Fixtures	10
Musical Instruments	10
Vehicles	5
Athletic Equipment	5
Buildings	40
Building Improvements	20

<u>Val Number</u>	<u>Description</u>	<u>Justification</u>
30116	Revenue Detail: A large amount has been reported as Earnings on Investments in Fund 32, account 6500, which should only include interest and/or dividend earnings. Correct or provide a brief explanation of the revenue reported. Revenue Detail 6500, Fund 32: \$37,850.16	The \$37,850.16 represents interest earnings for this fund; no other revenue is being reported here. This is due to higher interest rates being earned on all our funds.
30450	Revenue Detail: AFR amount must equal or exceed PDE FAI System amount. 7271, AFR Rev Detail: \$8,409,432.60 7271, PDE FAI System: \$8,416,266.61	The \$8,409,432.60 is accurate. This amount equals the amount shown on the PDE Audit Confirmation Report and also agrees with the Paid To Date amount shown in the FAI System.
30517	Revenue Detail: AFR amount must equal PDE FAI System amount. 7533, AFR Rev Detail: \$0.00 7533, PDE FAI System: \$1,012,033.32	The \$1,012,033.32 represents our Ready To Learn Tax Equity Supplement funds. Per the guidance issued by the Commonwealth of PA this amount is being recorded as Unearned Revenue in 2024-25. The funds will be recorded in revenue account 7533 in 2025-26.
42420	Expenditure Detail: Total current year 2700-513 expenditure varies from prior year by 10%. Correct the data or enter a justification. 2700-513, AFR Exp Detail: \$13,005,868.23 2700-513, PY AFR Amount: \$11,797,330.76	These costs are accurate. An increase in transportation rates and fuel costs is what drives this variance, as well as additional transportation costs paid for the Lincoln Center and Cottage Seven.
50160	SOIN: All Governmental Fund General Obligation Bonds must include an amount for Interest Paid during Fiscal Year. Correct data or enter a justification.	The G.O. Bonds/Notes Series 2020A thru 2020D have a delayed repayment schedule. Series 2020D began repayment in 2023. Series 2020A thru 2020C will begin repayment in 2034 & 2035.
50180	SOIN: All Governmental Fund General Obligation Bonds must include an amount for Amount Due Within One Year (Principal and Interest). Correct data or enter a justification.	The G.O. Bonds/Notes Series 2020A thru 2020D have a delayed repayment schedule. Series 2020D began repayment in 2023. Series 2020A thru 2020C will begin repayment in 2034 & 2035.
50430	SESS - 2160 Social Work Services: SESS Schedule amounts for Special Education vary from prior year by 40% or more. Correct the data or enter a justification. SESS Schedule 2160: \$30,737.89 Prior Year SESS Schedule 2160: \$0.00	There were no Social Work Services last year.

50470 SESS - 2440 Nursing Services: SESS Schedule amounts for Special Education vary from prior year by 40% or more. Correct the data or enter a justification.

SESS Schedule 2440: \$0.00
 Prior Year SESS Schedule 2440: \$12,715.26

There were no Nursing Services costs this year.

Amounts Expressed in Whole Dollars	<u>General Fund</u> <u>(10)</u>	<u>Student Sponsored</u> <u>Activity Fund</u> <u>(21)</u>	<u>Public Purpose Trust</u> <u>(27)</u>	<u>Other Compt Approved</u> <u>(28)</u>	<u>Athletic / Activity</u> <u>(29)</u>
Assets And Deferred Outflows Of Resources					
Assets					
0100 Cash and Cash Equivalents	28,227,039				
0110 Investments					
0120 Taxes Receivable	8,629,735				
0130 Due From Other Funds	1,120,768				
0141 Due From Other Governments	1,718,650				
0142 State Revenue Receivable	3,445,575				
0143 Federal Revenue Receivable	1,823,091				
0145 Other Intergovernmental Revenue Receivable					
0146 Due from Primary Government					
0147 Due from Component Unit					
0150 Other Receivables	146,174				
0170 Inventories					
0180 Prepaid Expenses (Expenditures)	33,888				
0190 Other Current Assets	301,000				
Total Assets	\$45,445,920				
0910 Deferred Outflows of Resources					
Total Assets And Deferred Outflows Of Resources	\$45,445,920				

Amounts Expressed in Whole Dollars

Capital Reserve (690.1850) Capital Reserve (1431)(32) Other Capital Projects Fund (39) Debt Service (40) Permanent (90)

Assets And Deferred Outflows Of Resources

Assets

0100 Cash and Cash Equivalents		860,751	139,141,962		
0110 Investments					
0120 Taxes Receivable					
0130 Due From Other Funds					
0141 Due From Other Governments					
0142 State Revenue Receivable					
0143 Federal Revenue Receivable					
0145 Other Intergovernmental Revenue Receivable					
0146 Due from Primary Government					
0147 Due from Component Unit					
0150 Other Receivables					
0170 Inventories					
0180 Prepaid Expenses (Expenditures)					
0190 Other Current Assets					
Total Assets		\$860,751	\$139,141,962		
0910 Deferred Outflows of Resources					
Total Assets And Deferred Outflows Of Resources		\$860,751	\$139,141,962		

Amounts Expressed in Whole Dollars

Total Governmental Funds

Assets And Deferred Outflows Of Resources

Assets	
0100 Cash and Cash Equivalents	168,229,752
0110 Investments	
0120 Taxes Receivable	8,629,735
0130 Due From Other Funds	1,120,768
0141 Due From Other Governments	1,718,650
0142 State Revenue Receivable	3,445,575
0143 Federal Revenue Receivable	1,823,091
0145 Other Intergovernmental Revenue Receivable	
0146 Due from Primary Government	
0147 Due from Component Unit	
0150 Other Receivables	146,174
0170 Inventories	
0180 Prepaid Expenses (Expenditures)	33,888
0190 Other Current Assets	301,000
Total Assets	\$185,448,633
0910 Deferred Outflows of Resources	
Total Assets And Deferred Outflows Of Resources	\$185,448,633

Amounts Expressed in Whole Dollars	<u>General Fund</u> <u>(10)</u>	<u>Student Sponsored</u> <u>Activity Fund</u> <u>(21)</u>	<u>Public Purpose Trust</u> <u>(27)</u>	<u>Other Compt Approved</u> <u>(28)</u>	<u>Athletic / Activity</u> <u>(29)</u>
Liabilities And Deferred Inflows Of Resources And Fund Balances					
Liabilities					
0400 Due to Other Funds	9,367				
0411 Due to Other Governments					
0412 Due to Primary Government					
0413 Due to Component Unit					
0420 Accounts Payable	4,784,281				
0430 Contracts Payable					
0440 Current Portion of Long-Term Debt					
0450 Short-Term Payables					
0461 Accrued Salaries and Benefits	280,535				
0462 Payroll Deductions and Withholding	9,304,599				
0480 Unearned Revenues	1,012,033				
0490 Other Current Liabilities	180,742				
Total Liabilities	\$15,571,557				
0950 Deferred Inflows of Resources	6,125,126				
Fund Balances					
0810 Nonspendable Fund Balance					
0820 Restricted Fund Balance					
0830 Committed Fund Balance					
0840 Assigned Fund Balance	10,325,000				
0850 Unassigned Fund Balance	13,424,237				
Total Fund Balances	\$23,749,237				
Total Liabilities, Deferred Inflows Of Resources And Fund Balances	\$45,445,920				

Amounts Expressed in Whole Dollars	<u>Capital Reserve (690.</u> <u>1850</u> <u>(31)</u>	<u>Capital Reserve (1431)</u> <u>(32)</u>	<u>Other Capital Projects</u> <u>Fund</u> <u>(39)</u>	<u>Debt Service</u> <u>(40)</u>	<u>Permanent</u> <u>(90)</u>
Liabilities And Deferred Inflows Of Resources And Fund Balances					
Liabilities					
0400 Due to Other Funds			810,229		
0411 Due to Other Governments					
0412 Due to Primary Government					
0413 Due to Component Unit					
0420 Accounts Payable			5,360,751		
0430 Contracts Payable					
0440 Current Portion of Long-Term Debt					
0450 Short-Term Payables					
0461 Accrued Salaries and Benefits					
0462 Payroll Deductions and Withholding					
0480 Unearned Revenues					
0490 Other Current Liabilities					
Total Liabilities			\$6,170,980		
0950 Deferred Inflows of Resources					
Fund Balances					
0810 Nonspendable Fund Balance					
0820 Restricted Fund Balance		860,751	132,970,982		
0830 Committed Fund Balance					
0840 Assigned Fund Balance					
0850 Unassigned Fund Balance					
Total Fund Balances		\$860,751	\$132,970,982		
Total Liabilities, Deferred Inflows Of Resources And Fund Balances		\$860,751	\$139,141,962		

Amounts Expressed in Whole Dollars

Total Governmental Funds

Liabilities And Deferred Inflows Of Resources And Fund Balances

Liabilities

0400 Due to Other Funds	819,596
0411 Due to Other Governments	
0412 Due to Primary Government	
0413 Due to Component Unit	
0420 Accounts Payable	10,145,032
0430 Contracts Payable	
0440 Current Portion of Long-Term Debt	
0450 Short-Term Payables	
0461 Accrued Salaries and Benefits	280,535
0462 Payroll Deductions and Withholding	9,304,599
0480 Unearned Revenues	1,012,033
0490 Other Current Liabilities	180,742

Total Liabilities \$21,742,537

0950 Deferred Inflows of Resources	6,125,126
------------------------------------	-----------

Fund Balances

0810 Nonspendable Fund Balance	
0820 Restricted Fund Balance	133,831,733
0830 Committed Fund Balance	
0840 Assigned Fund Balance	10,325,000
0850 Unassigned Fund Balance	13,424,237

Total Fund Balances \$157,580,970

Total Liabilities, Deferred Inflows Of Resources And Fund Balances \$185,448,633

Amounts Expressed in Whole Dollars	<u>General Fund</u> <u>(10)</u>	<u>Student Sponsored</u> <u>Activity Fund</u> <u>(21)</u>	<u>Public Purpose Trust</u> <u>(27)</u>	<u>Other Compt Approved</u> <u>(28)</u>	<u>Athletic / Activity</u> <u>(29)</u>
Revenues					
6000 Revenue from Local Sources	151,541,042				
7000 Revenue from State Sources	72,399,559				
8000 Revenue from Federal Sources	7,900,345				
Total Revenues	\$231,840,946				
Expenditures					
1000 Instruction	171,871,141				
2000 Support Services	47,133,033				
3000 Operation of Non-Instructional Services	2,604,694				
4000 Facilities Acquisition, Construction and Improvement Services					
5110 Debt Service	20,226,438				
5130 Refund of Prior Year Revenues / Receipts					
5140 Leases and Other Right-to-Use Arrangements					
Total Expenditures	\$241,835,306				
Excess (Deficiency) Of Revenues Over Expenditures	(\$9,994,360)				
Other Financing Sources (Uses)					
9110 Face Value of Bonds Issued					
9120 Proceeds from Refunding of Bonds					
9130 Bond Premiums					
9200 Proceeds from Extended Term Financing, Leases, and Other Right-to-Use Arrangements					
9300 Interfund Transfers - IN					
9400 Sale of or Compensation for Loss of Fixed Assets	21,376				
9710 Transfers from Component Units					
9720 Transfers from Primary Governments					
9910 Other Financing Sources Not Listed in the 9000 Series					
9990 Insurance Recoveries	400,000				
5120 Debt Service – Refunded Bonds					
5150 Bond Discounts					
5200 Interfund Transfers – Out					
5300 Transfers Out to Component Units/Primary Governments					
Total Other Financing Sources (Uses)	\$421,376				

Amounts Expressed in Whole Dollars	<u>Capital Reserve (690.1850)</u> <u>(31)</u>	<u>Capital Reserve (1431)</u> <u>(32)</u>	<u>Other Capital Projects</u> <u>Fund</u> <u>(39)</u>	<u>Debt Service</u> <u>(40)</u>	<u>Permanent</u> <u>(90)</u>
Revenues					
6000 Revenue from Local Sources		37,850	3,515,058		
7000 Revenue from State Sources					
8000 Revenue from Federal Sources					
Total Revenues		\$37,850	\$3,515,058		
Expenditures					
1000 Instruction					
2000 Support Services			1,871,570		
3000 Operation of Non-Instructional Services					
4000 Facilities Acquisition, Construction and Improvement Services			47,400,020		
5110 Debt Service			1,810,000		
5130 Refund of Prior Year Revenues / Receipts					
5140 Leases and Other Right-to-Use Arrangements					
Total Expenditures			\$51,081,590		
Excess (Deficiency) Of Revenues Over Expenditures		\$37,850	(\$47,566,532)		
Other Financing Sources (Uses)					
9110 Face Value of Bonds Issued			91,285,000		
9120 Proceeds from Refunding of Bonds					
9130 Bond Premiums			4,428,943		
9200 Proceeds from Extended Term Financing, Leases, and Other Right-to-Use Arrangements					
9300 Interfund Transfers - IN					
9400 Sale of or Compensation for Loss of Fixed Assets					
9710 Transfers from Component Units					
9720 Transfers from Primary Governments					
9910 Other Financing Sources Not Listed in the 9000 Series					
9990 Insurance Recoveries					
5120 Debt Service – Refunded Bonds					
5150 Bond Discounts					
5200 Interfund Transfers – Out					
5300 Transfers Out to Component Units/Primary Governments					
Total Other Financing Sources (Uses)			\$95,713,943		

Amounts Expressed in Whole Dollars	<u>Total Governmental Funds</u>
Revenues	
6000 Revenue from Local Sources	155,093,950
7000 Revenue from State Sources	72,399,559
8000 Revenue from Federal Sources	7,900,345
Total Revenues	\$235,393,854
Expenditures	
1000 Instruction	171,871,141
2000 Support Services	49,004,603
3000 Operation of Non-Instructional Services	2,604,694
4000 Facilities Acquisition, Construction and Improvement Services	47,400,020
5110 Debt Service	22,036,438
5130 Refund of Prior Year Revenues / Receipts	
5140 Leases and Other Right-to-Use Arrangements	
Total Expenditures	\$292,916,896
Excess (Deficiency) Of Revenues Over Expenditures	(\$57,523,042)
Other Financing Sources (Uses)	
9110 Face Value of Bonds Issued	91,285,000
9120 Proceeds from Refunding of Bonds	
9130 Bond Premiums	4,428,943
9200 Proceeds from Extended Term Financing, Leases, and Other Right-to-Use Arrangements	
9300 Interfund Transfers - IN	
9400 Sale of or Compensation for Loss of Fixed Assets	21,376
9710 Transfers from Component Units	
9720 Transfers from Primary Governments	
9910 Other Financing Sources Not Listed in the 9000 Series	
9990 Insurance Recoveries	400,000
5120 Debt Service – Refunded Bonds	
5150 Bond Discounts	
5200 Interfund Transfers – Out	
5300 Transfers Out to Component Units/Primary Governments	
Total Other Financing Sources (Uses)	\$96,135,319

Amounts Expressed in Whole Dollars	<u>General Fund</u> <u>(10)</u>	<u>Student Sponsored</u> <u>Activity Fund</u> <u>(21)</u>	<u>Public Purpose Trust</u> <u>(27)</u>	<u>Other Compt Approved</u> <u>(28)</u>	<u>Athletic / Activity</u> <u>(29)</u>
Special And Extraordinary Items					
9920 Special Items – Gains					
9930 Extraordinary Items – Gains					
5520 Special Items – Losses					
5530 Extraordinary Items – Losses					
Net Change In Fund Balances	(\$9,572,984)				
Fund Balance					
0001 Fund Balance - Beginning of Fiscal Year	33,322,222				
Fund Balance - End Of Year	\$23,749,238				

Amounts Expressed in Whole Dollars	<u>Capital Reserve (690.</u> <u>1850)</u> <u>(31)</u>	<u>Capital Reserve (1431)</u> <u>(32)</u>	<u>Other Capital Projects</u> <u>Fund</u> <u>(39)</u>	<u>Debt Service</u> <u>(40)</u>	<u>Permanent</u> <u>(90)</u>
Special And Extraordinary Items					
9920 Special Items – Gains					
9930 Extraordinary Items – Gains					
5520 Special Items – Losses					
5530 Extraordinary Items – Losses					
Net Change In Fund Balances		\$37,850	\$48,147,411		
Fund Balance					
0001 Fund Balance - Beginning of Fiscal Year		822,901	84,823,572		
Fund Balance - End Of Year		\$860,751	\$132,970,983		

Amounts Expressed in Whole Dollars	<u>Total Governmental Funds</u>
Special And Extraordinary Items	
9920 Special Items – Gains	
9930 Extraordinary Items – Gains	
5520 Special Items – Losses	
5530 Extraordinary Items – Losses	
Net Change In Fund Balances	\$38,612,277
Fund Balance	
0001 Fund Balance - Beginning of Fiscal Year	118,968,695
Fund Balance - End Of Year	\$157,580,972

Amounts Expressed in Whole Dollars	<u>Food Service</u> <u>(51)</u>	<u>Child Care</u> <u>Operations</u> <u>(52)</u>	<u>Other Enterprise</u> <u>(58)</u>	<u>TOTAL</u>	<u>Internal Service</u> <u>(60)</u>
Assets And Deferred Outflows Of Resources					
Current Assets					
0100 Cash and Cash Equivalents	4,604,652			4,604,652	
0110 Investments					
0130 Due From Other Funds					
0141 Due From Other Governments					
0142 State Revenue Receivable	2,716			2,716	
0143 Federal Revenue Receivable	64,358			64,358	
0146 Due from Primary Government					
0147 Due from Component Unit					
0150 Other Receivables					
0170 Inventories	37,866			37,866	
0180 Prepaid Expenses (Expenditures)					
0190 Other Current Assets					
Total Current Assets	\$4,709,592			\$4,709,592	
Noncurrent Assets					
0211 Land					
0212 Site Improvements (Net)					
0220 Buildings and Building Improvements (Net)					
0230 Tangible Property and Intangible Right-To-Use Assets (Net)	170,038			170,038	
0250 Construction in Progress					
0260 Long Term Prepayments					
0290 Other Noncurrent Assets					
Total Noncurrent Assets	\$170,038			\$170,038	
0910 Deferred Outflows of Resources	377,122			377,122	
Total Assets And Deferred Outflows Of Resources	\$5,256,752			\$5,256,752	

Amounts Expressed in Whole Dollars	<u>Food Service</u> <u>(51)</u>	<u>Child Care</u> <u>Operations</u> <u>(52)</u>	<u>Other Enterprise</u> <u>(58)</u>	<u>TOTAL</u>	<u>Internal Service</u> <u>(60)</u>
Liabilities And Deferred Inflows Of Resources And Net Position					
Current Liabilities					
0400 Due to Other Funds	301,026			301,026	
0411 Due to Other Governments					
0413 Due to Component Unit					
0420 Accounts Payable	4,352			4,352	
0430 Contracts Payable					
0440 Current Portion of Long-Term Debt	90,685			90,685	
0450 Short-Term Payables					
0461 Accrued Salaries and Benefits	1,085			1,085	
0462 Payroll Deductions and Withholding					
0480 Unearned Revenues	19,718			19,718	
0490 Other Current Liabilities					
Total Current Liabilities	\$416,866			\$416,866	
Noncurrent Liabilities					
0510 Bonds Payable					
0520 Extended-Term Financing Agreements Payable					
0530 Lease and Other Right-To-Use Obligations					
0540 Accumulated Compensated Absences					
0550 Authority Lease Obligations					
0560 Other Post-Employment Benefits (OPEB)	121,712			121,712	
0570 Net Pension Liability	2,166,000			2,166,000	
0599 Other Noncurrent Liabilities					
Total Noncurrent Liabilities	\$2,287,712			\$2,287,712	
Total Liabilities	\$2,704,578			\$2,704,578	
0950 Deferred Inflows of Resources	136,854			136,854	
Net Position					
0791 Net Investment in Capital Assets	170,038			170,038	
0008 Restricted Net Position (0792 – 0798)					
0799 Unrestricted Net Position	2,245,282			2,245,282	
Total Net Position	\$2,415,320			\$2,415,320	
Total Liabilities And Deferred Inflows Of Resources And Net Position	\$5,256,752			\$5,256,752	

Amounts Expressed in Whole Dollars	<u>Food Service</u> <u>(51)</u>	<u>Child Care Operations</u> <u>(52)</u>	<u>Other Enterprise</u> <u>(58)</u>	<u>TOTAL</u>	<u>Internal Service</u> <u>(60)</u>
Operating Revenues					
6600 Food Service Revenue	136,519			136,519	
0071 Charges for Services					
0072 Other Operating Revenue					
Total Operating Revenues	\$136,519			\$136,519	
Operating Expenses					
100 Personnel Services – Salaries	965,521			965,521	
200 Personnel Services – Employee Benefits	378,181			378,181	
300 Purchased Professional and Technical Services	9,855			9,855	
400 Purchased Property Services	40,625			40,625	
500 Other Purchased Services	1,067			1,067	
600 Supplies	2,050,226			2,050,226	
740 Depreciation	23,777			23,777	
770 Amortization Expense					
810 Dues and Fees	2,660			2,660	
880 Refunds of Prior Years' Receipts					
890 Miscellaneous Expenditures					
Total Operating Expenses	\$3,471,912			\$3,471,912	
Operating Income (Loss)	(\$3,335,393)			(\$3,335,393)	
Non Operating Revenues (Expenses)					
6500 Earnings on Investments	183,617			183,617	
6830 Federal Revenue from Intermediary Sources					
6920 Contributions and Donations from Private Sources					
6930 Gains or Losses on Sale of Fixed Assets					
6991 Refunds of a Prior Year Expenditure					
7000 Revenue from State Sources	338,796			338,796	
8000 Revenue from Federal Sources	3,828,174			3,828,174	
9990 Insurance Recoveries					
820 Claims and Judgments Against the LEA					
830 Interest					
TOTAL Non Operating Revenues (Expenses)	\$4,350,587			\$4,350,587	
Income (Loss) Before Contributions And Transfers	\$1,015,194			\$1,015,194	

Amounts Expressed in Whole Dollars	<u>Food Service</u> <u>(51)</u>	<u>Child Care Operations</u> <u>(52)</u>	<u>Other Enterprise</u> <u>(58)</u>	<u>TOTAL</u>	<u>Internal Service</u> <u>(60)</u>
Contributions, Transfers, and Special and Extraordinary Items					
5200 Interfund Transfers – Out					
5300 Transfers Out to Component Units/Primary Governments					
5520 Special Items – Losses					
5530 Extraordinary Items – Losses					
9300 Interfund Transfers - IN					
9500 Capital Contributions					
9700 Transfers IN From Component Units/Primary Governments					
9920 Special Items – Gains					
9930 Extraordinary Items – Gains					
Change In Net Position	\$1,015,194			\$1,015,194	
0002 Net Position - Beginning of Fiscal Year	1,429,527			1,429,527	
0003 Accounting Changes / Residual Equity Transfers	(29,401)			(29,401)	
Net Position - End Of Year	\$2,415,320			\$2,415,320	

LEA : 124151902 Coatesville Area SD

Printed 12/17/2025 9:40:52 AM

Amounts Expressed in Whole Dollars	<u>Food Service</u> <u>(51)</u>	<u>Child Care Operations</u> <u>(52)</u>	<u>Other Enterprise</u> <u>(58)</u>	<u>TOTAL</u>	<u>Internal Service(60)</u>
Cash Flows From Operating Activities					
0011 Cash Receipts From Users	136,519			136,519	
0012 Cash Receipts From Assessments Made to Other Funds					
0013 Cash Receipts From Earnings on Investments					
0014 Cash Receipts From Other Operating Revenue					
0015 Cash Payments To Employees For Services	1,510,164			1,510,164	
0016 Cash Payments For Insurance Claims					
0017 Cash Payments To Suppliers For Goods and Services	1,915,475			1,915,475	
0018 Cash Payments For Other Operating Expenses					
Net Cash Provided By (Used For) Operating Activities	(\$3,289,120)			(\$3,289,120)	
Cash Flows From Non-Capital Financing Activities					
0021 Receipts From Local Sources - 6000					
0022 Receipts From State Sources - 7000	339,392			339,392	
0023 Receipts From Federal Sources -8000	3,828,401			3,828,401	
0024 Notes and Loans Received (Repaid)					
0025 Interest Paid on Notes/Loans - 5100-830					
0026 Operating Transfers In (Out)/Residual Equity Trans					
0027 Operating Transfers In (Out) Primary Government / Comp Unit					
0028 Receipts From Refund of Prior Year Expenditures - 6991					
0029 Special and Extraordinary Gains (losses)					
0030 Receipts from Insurance Recoveries -9990					
Net Cash Prov By (Used for) Non-Capital Financing Activities	\$4,167,793			\$4,167,793	
Cash Flows From Capital and Related Financing Activities					
0031 Payments For Fac Acq, Const, and Imp - 4000	(115,628)			(115,628)	
0032 Proceeds from Disposal of Capital Assets					
0033 Proceeds From Extended Term Financing - 9200					
0034 Principal Paid on Financing Agreements					
0035 Interest Paid on Financing Agreements - 5100-830					
0036 (Inc) Dec in Contributed Capital					
Net Cash Prov By (Used for) Capital and Related Financing Activities	(\$115,628)			(\$115,628)	
Cash Flows From Investing Activities					
0041 Earnings on Investments - 6500	183,617			183,617	
0042 Purchase of Inv Securities / Deposits to Inv Pools					
0043 Receipts From Investment Pool Withdrawals					
0044 Proceeds from Sale and Maturity of Inv Securities					

LEA : 124151902 Coatesville Area SD

Printed 12/17/2025 9:40:52 AM

0045 Loans Received (Paid)

Net Cash Prov By (Used for) Investing Activities	\$183,617	\$183,617
---	------------------	------------------

LEA : 124151902 Coatesville Area SD

Printed 12/17/2025 9:40:52 AM

	<u>Food Service</u> (51)	<u>Child Care Operations</u> (52)	<u>Other Enterprise</u> (58)	<u>TOTAL</u>	<u>Internal Service</u> (60)
Net Increase (Decrease) in Cash Flows	946,662			946,662	
0004 Cash and Cash Equivalents Beginning of Year					
Cash and Cash Equivalents at Year End	\$946,662			\$946,662	

Reconciliation of Operating Income (Loss) To Net Cash Provided by (Used For) Operating Activities

0005 Operating Income (Loss) per REP	(3,335,393)			(3,335,393)	
Adjustments					
0051 Depreciation and Net Amortization	23,777			23,777	
0052 Provision for Uncollectible Accounts					
0053 Other Adjustments					
Effect of Changes in Assets, Liabilities, Deferred Outflows and Deferred Inflows					
0054 (Inc) Dec In Accounts Receivable (0120-0150)					
0055 Advances to Other Funds					
0056 (Inc) Dec in Inventories (0170)	(8,103)			(8,103)	
0057 (Inc) Dec in Prepaid Expenses (0180)					
0058 (Inc) Dec in Other Current or Noncurrent Assets					
0064 Deferred Outflows (0910)					
0059 Inc (Dec) in Accounts Payable (0400-0450)	187,469			187,469	
0060 Inc (Dec) in Accrued Salaries/Benefits (0461)					
0065 Inc (Dec) in Net Pension Liabilities (0570)	(149,398)			(149,398)	
0066 Inc (Dec) in Other Postemp Benefit Oblig (0560)	(7,472)			(7,472)	
0061 Inc (Dec) in Payroll Deductions/Withholding (0462)					
0062 Inc (Dec) in Unearned Revenue (0480)					
0063 Inc (Dec) in Other Current or Noncurrent Liabilities					
0067 Deferred Inflows (0950)					
Total Adjustments	\$46,273			\$46,273	
Cash Provided By (Used for) Total	(\$3,289,120)			(\$3,289,120)	

COMBINED STATEMENT OF CASH FLOWS
SCHEDULE OF NONCASH INVESTING, CAPITAL, AND FINANCING ACTIVITIES

Explanation of Transaction and Balance Sheet Effect	Amount
Total	

LEA : 124151902 Coatesville Area SD

Printed 12/17/2025 9:40:55 AM

Amounts Expressed in Whole Dollars

Private Purpose Trust
(71)

Investment Trust
(72)

Pension Trust
(73)

Student Activity Custodial
(81)

Assets And Deferred Outflows Of Resources

Assets

0100 Cash and Cash Equivalents	162,561			96,356
0110 Investments	16,517			
0130 Due From Other Funds				
0140 Due from Other Governments, Primary Government and Component Units				
0150 Other Receivables				
0170 Inventories				
0180 Prepaid Expenses (Expenditures)				
0190 Other Current Assets				
0220 Buildings and Building Improvements (Net)				
0230 Tangible Property and Intangible Right-To-Use Assets (Net)				
Total Assets	\$179,078			\$96,356
0910 Deferred Outflows of Resources				
Total Assets And Deferred Outflows Of Resources	\$179,078			\$96,356

LEA : 124151902 Coatesville Area SD

Printed 12/17/2025 9:40:55 AM

Amounts Expressed in Whole Dollars	<u>Other Custodial</u> <u>(89)</u>	<u>Fiduciary Component Units</u> <u>(98)</u>	<u>Total Fiduciary Funds</u>
Assets And Deferred Outflows Of Resources			
Assets			
0100 Cash and Cash Equivalents			258,917
0110 Investments			16,517
0130 Due From Other Funds			
0140 Due from Other Governments, Primary Government and Component Units			
0150 Other Receivables			
0170 Inventories			
0180 Prepaid Expenses (Expenditures)			
0190 Other Current Assets			
0220 Buildings and Building Improvements (Net)			
0230 Tangible Property and Intangible Right-To-Use Assets (Net)			
Total Assets			\$275,434
0910 Deferred Outflows of Resources			
Total Assets And Deferred Outflows Of Resources			\$275,434

LEA : 124151902 Coatesville Area SD

Printed 12/17/2025 9:40:55 AM

Amounts Expressed in Whole Dollars	<u>Private Purpose Trust</u> (71)	<u>Investment Trust</u> (72)	<u>Pension Trust</u> (73)	<u>Student Activity Custodial</u> (81)
Liabilities, Deferred Inflows Of Resources And Net Position				
Liabilities				
0400 Due to Other Funds				145
0410 Due to Other Governments, Primary Government and Component Units				
0420 Accounts Payable	1,035			8,723
0430 Contracts Payable				
0450 Short-Term Payables				
0460 Payroll Accruals and Withholdings				
0480 Unearned Revenues				
0490 Other Current Liabilities				
Total Liabilities	\$1,035			\$8,868
0950 Deferred Inflows of Resources				
Net Position				
0791 Net Investment in Capital Assets				
0009 Restricted Net Position (0792 – 0798)	178,043			87,488
0799 Unrestricted Net Position				
Total Net Position	\$178,043			\$87,488
Total Liabilities, Deferred Inflows Of Resources And Net Position	\$179,078			\$96,356

LEA : 124151902 Coatesville Area SD

Printed 12/17/2025 9:40:55 AM

Amounts Expressed in Whole Dollars	<u>Other Custodial</u> <u>(89)</u>	<u>Fiduciary Component Units</u> <u>(98)</u>	<u>Total Fiduciary Funds</u>
Liabilities, Deferred Inflows Of Resources And Net Position			
Liabilities			
0400 Due to Other Funds			145
0410 Due to Other Governments, Primary Government and Component Units			
0420 Accounts Payable			9,758
0430 Contracts Payable			
0450 Short-Term Payables			
0460 Payroll Accruals and Withholdings			
0480 Unearned Revenues			
0490 Other Current Liabilities			
Total Liabilities			\$9,903
0950 Deferred Inflows of Resources			
Net Position			
0791 Net Investment in Capital Assets			
0009 Restricted Net Position (0792 – 0798)			265,531
0799 Unrestricted Net Position			
Total Net Position			\$265,531
Total Liabilities, Deferred Inflows Of Resources And Net Position			\$275,434

Amounts Expressed in Whole Dollars	<u>Private Purpose Trust</u> (71)	<u>Investment Trust</u> (72)	<u>Pension Trust</u> (73)	<u>Student Activity</u> <u>Custodial</u> (81)	<u>Other Custodial</u> (89)	<u>Fiduciary Component</u> <u>Units</u> (98)
Additions						
0091 Gifts and Contributions						
0095 Net Investment Earnings	8,147			4,937		
0092 Other Additions				116,469		
Deductions						
0093 Scholarships Awarded	6,200					
0094 Other Deductions				142,273		
Change In Net Position	\$1,947			(\$20,867)		
0006 Net Position – Beginning of Fiscal Year	176,096			108,355		
0007 Net Position Held in Trust for Pension Benefits						
Net Position - End of Fiscal Year	\$178,043			\$87,488		

Amounts Expressed in Whole Dollars	<u>Total Fiduciary Funds</u>
Additions	
0091 Gifts and Contributions	
0095 Net Investment Earnings	13,084
0092 Other Additions	116,469
Deductions	
0093 Scholarships Awarded	6,200
0094 Other Deductions	142,273
Change in Net Position	(\$18,920)
0006 Net Position – Beginning of Fiscal Year	284,451
0007 Net Position Held in Trust for Pension Benefits	
Net Position - End of Fiscal Year	\$265,531

	<u>Revenue Reported In Current Year</u>	<u>Current Year Tax Accrual</u>	<u>Prior Year Tax Accrual</u>	<u>Taxes Collected In Current Year</u>
<u>Revenue from Local Sources</u>				
6111 Current Real Estate Taxes	125,037,732.71			125,037,732.71
6112 Interim Real Estate Taxes	1,538,537.79			1,538,537.79
6113 Public Utility Realty Taxes	128,366.14			128,366.14
6114 Payments in Lieu of Current Taxes - State / Local	397.97			397.97
6143 Current Act 511 Local Services Taxes	84,338.35			84,338.35
6151 Current Act 511 Earned Income Taxes	11,505,542.15			11,505,542.15
6153 Current Act 511 Real Estate Transfer Taxes	2,267,574.71			2,267,574.71
6411 Delinquent Real Estate Taxes	4,259,392.23			4,259,392.23
6500 Earnings on Investments	3,161,834.57			
6700 Revenues from LEA Activities	194,368.22			
6829 State Revenue Received from Other Sources	95,000.00			
6832 Federal IDEA Revenue Received as Pass Through	1,421,730.47			
6910 Rentals	200,902.86			
6920 Contributions and Donations from Private Sources	173,465.58			
6944 Receipts from Other LEAs in Pennsylvania - Education	203,067.87			
6980 Revenue from Community Services Activities	5,500.00			
6991 Refunds of a Prior Year Expenditure	952,142.00			
6999 Other Revenues Not Specified Above	311,148.40			
TOTAL Revenue from Local Sources	\$151,541,042.02			\$144,821,882.05

**Revenue Reported
In Current Year**

Revenue from State Sources

7111 Basic Education Funding-Formula	35,256,886.91		
7140 Charter Schools	478,010.76		
7160 Tuition for Orphans Subsidy	103,412.93		
7271 Special Education funds for School-Aged Pupils	8,409,432.60		
7311 Pupil Transportation Subsidy	3,579,819.62		
7312 Nonpublic and Charter School Pupil Transportation Subsidy	1,420,265.00		
7320 Rental and Sinking Fund Payments / Building Reimbursement Subsidy	2,011,757.01		
7331 State Reimbursement for Health Services	98,246.80		
7332 Feminine Hygiene Product Funding	9,346.75		
7340 State Property Tax Reduction Allocation	5,850,144.82		
7361 School Safety and Security Grants	269,596.50		
7362 School Mental Health & Safety and Security Grants	206,150.57		
7369 Other Safe School Grants	49,998.00		
7531 Ready to Learn-Foundation	1,103,925.00		
7532 Ready to Learn-Adequacy Supplement	3,865,716.17		
7810 State Share of Social Security and Medicare Taxes	1,697,502.48		
7820 State Share of Retirement Contributions	7,989,346.60		
TOTAL Revenue from State Sources	\$72,399,558.52		

**Revenue Reported
In Current Year**

Revenue from Federal Sources

8514 Title I - Improving the Academic Achievement of the Disadvantaged	2,731,476.24			
8515 Title II - Preparing, Training, and Recruiting High Quality Teachers and Principals	149,213.88			
8516 Title III - Language Instruction for English Learners and Immigrant Students	18,947.03			
8517 Title IV - 21st Century Schools	191,681.00			
8744 ARP ESSER - Elementary and Secondary School Emergency Relief Fund	4,142,219.34			
8751 ARP ESSER Learning Loss	0.58			
8752 ARP ESSER Summer Programs	0.61			
8753 ARP ESSER Afterschool Programs	(0.03)			
8754 ARP ESSER Homeless Children and Youth Funds	3,747.16			
8755 ARP ESSER Emergency Relief for Other Educational Entities	39,815.12			
8820 Medical Assistance Reimbursement for Administrative Claiming (Quarterly) Program	623,244.29			
TOTAL Revenue from Federal Sources	\$7,900,345.22			

**Revenue Reported
In Current Year**

Other Financing Sources

9400 Sale of or Compensation for Loss of Fixed Assets	21,376.00			
9990 Insurance Recoveries	400,000.00			
TOTAL Other Financing Sources	\$421,376.00			
TOTAL FROM ALL SOURCES	\$232,262,321.76			\$144,821,882.05

LEA : 124151902 Coatesville Area SD

Printed 12/17/2025 9:41:04 AM

	<u>General Fund (10)</u>	<u>Student Sponsored Activity Fund (21)</u>	<u>Public Purpose Trust (27)</u>	<u>Other Compt Approved (28)</u>	<u>Athletic / Activity (29)</u>	<u>Capital Reserve (690, 1850) (31)</u>
6000 Revenue from Local Sources						
6111 Current Real Estate Taxes	125,037,732.71					
6112 Interim Real Estate Taxes	1,538,537.79					
6113 Public Utility Realty Taxes	128,366.14					
6114 Payments in Lieu of Current Taxes - State / Local	397.97					
6143 Current Act 511 Local Services Taxes	84,338.35					
6151 Current Act 511 Earned Income Taxes	11,505,542.15					
6153 Current Act 511 Real Estate Transfer Taxes	2,267,574.71					
6411 Delinquent Real Estate Taxes	4,259,392.23					
6500 Earnings on Investments	3,161,834.57					
6700 Revenues from LEA Activities	194,368.22					
6829 State Revenue Received from Other Sources	95,000.00					
6832 Federal IDEA Revenue Received as Pass Through	1,421,730.47					
6910 Rentals	200,902.86					
6920 Contributions and Donations from Private Sources	173,465.58					
6944 Receipts from Other LEAs in Pennsylvania - Education	203,067.87					
6980 Revenue from Community Services Activities	5,500.00					
6991 Refunds of a Prior Year Expenditure	952,142.00					
6999 Other Revenues Not Specified Above	311,148.40					
6000 Total Revenue from Local Sources	\$151,541,042.02					
7000 Revenue from State Sources						
7111 Basic Education Funding-Formula	35,256,886.91					
7140 Charter Schools	478,010.76					
7160 Tuition for Orphans Subsidy	103,412.93					
7271 Special Education funds for School-Aged Pupils	8,409,432.60					
7311 Pupil Transportation Subsidy	3,579,819.62					
7312 Nonpublic and Charter School Pupil Transportation Subsidy	1,420,265.00					
7320 Rental and Sinking Fund Payments / Building Reimbursement Subsidy	2,011,757.01					
7331 State Reimbursement for Health Services	98,246.80					
7332 Feminine Hygiene Product Funding	9,346.75					
7340 State Property Tax Reduction Allocation	5,850,144.82					
7361 School Safety and Security Grants	269,596.50					
7362 School Mental Health & Safety and Security Grants	206,150.57					
7369 Other Safe School Grants	49,998.00					
7531 Ready to Learn-Foundation	1,103,925.00					
7532 Ready to Learn-Adequacy Supplement	3,865,716.17					

LEA : 124151902 Coatesville Area SD

Printed 12/17/2025 9:41:04 AM

	<u>Capital Reserve</u> <u>(1431) (32)</u>	<u>Other Capital</u> <u>Projects Fund (39)</u>	<u>Debt Service (40)</u>	<u>Permanent (90)</u>	<u>Total</u>
6000 Revenue from Local Sources					
6111 Current Real Estate Taxes					125,037,732.71
6112 Interim Real Estate Taxes					1,538,537.79
6113 Public Utility Realty Taxes					128,366.14
6114 Payments in Lieu of Current Taxes - State / Local					397.97
6143 Current Act 511 Local Services Taxes					84,338.35
6151 Current Act 511 Earned Income Taxes					11,505,542.15
6153 Current Act 511 Real Estate Transfer Taxes					2,267,574.71
6411 Delinquent Real Estate Taxes					4,259,392.23
6500 Earnings on Investments	37,850.16	3,515,057.63			6,714,742.36
6700 Revenues from LEA Activities					194,368.22
6829 State Revenue Received from Other Sources					95,000.00
6832 Federal IDEA Revenue Received as Pass Through					1,421,730.47
6910 Rentals					200,902.86
6920 Contributions and Donations from Private Sources					173,465.58
6944 Receipts from Other LEAs in Pennsylvania - Education					203,067.87
6980 Revenue from Community Services Activities					5,500.00
6991 Refunds of a Prior Year Expenditure					952,142.00
6999 Other Revenues Not Specified Above					311,148.40
6000 Total Revenue from Local Sources	\$37,850.16	\$3,515,057.63			\$155,093,949.81
7000 Revenue from State Sources					
7111 Basic Education Funding-Formula					35,256,886.91
7140 Charter Schools					478,010.76
7160 Tuition for Orphans Subsidy					103,412.93
7271 Special Education funds for School-Aged Pupils					8,409,432.60
7311 Pupil Transportation Subsidy					3,579,819.62
7312 Nonpublic and Charter School Pupil Transportation Subsidy					1,420,265.00
7320 Rental and Sinking Fund Payments / Building Reimbursement Subsidy					2,011,757.01
7331 State Reimbursement for Health Services					98,246.80
7332 Feminine Hygiene Product Funding					9,346.75
7340 State Property Tax Reduction Allocation					5,850,144.82
7361 School Safety and Security Grants					269,596.50
7362 School Mental Health & Safety and Security Grants					206,150.57
7369 Other Safe School Grants					49,998.00
7531 Ready to Learn-Foundation					1,103,925.00
7532 Ready to Learn-Adequacy Supplement					3,865,716.17

LEA : 124151902 Coatesville Area SD

Printed 12/17/2025 9:41:04 AM

	<u>General Fund (10)</u>	<u>Student Sponsored Activity Fund (21)</u>	<u>Public Purpose Trust (27)</u>	<u>Other Compt Approved (28)</u>	<u>Athletic / Activity (29)</u>	<u>Capital Reserve (690.1850) (31)</u>
7000 Revenue from State Sources						
7810 State Share of Social Security and Medicare Taxes	1,697,502.48					
7820 State Share of Retirement Contributions	7,989,346.60					
7000 Total Revenue from State Sources	\$72,399,558.52					
8000 Revenue from Federal Sources						
8514 Title I - Improving the Academic Achievement of the Disadvantaged	2,731,476.24					
8515 Title II - Preparing, Training, and Recruiting High Quality Teachers and Principals	149,213.88					
8516 Title III - Language Instruction for English Learners and Immigrant Students	18,947.03					
8517 Title IV - 21st Century Schools	191,681.00					
8744 ARP ESSER - Elementary and Secondary School Emergency Relief Fund	4,142,219.34					
8751 ARP ESSER Learning Loss	0.58					
8752 ARP ESSER Summer Programs	0.61					
8753 ARP ESSER Afterschool Programs	(0.03)					
8754 ARP ESSER Homeless Children and Youth Funds	3,747.16					
8755 ARP ESSER Emergency Relief for Other Educational Entities	39,815.12					
8820 Medical Assistance Reimbursement for Administrative Claiming (Quarterly) Program	623,244.29					
8000 Total Revenue from Federal Sources	\$7,900,345.22					
9000 Other Financing Sources						
9110 Face Value of Bonds Issued						
9130 Bond Premiums						
9400 Sale of or Compensation for Loss of Fixed Assets	21,376.00					
9990 Insurance Recoveries	400,000.00					
9000 Total Other Financing Sources	\$421,376.00					
Total From All Sources	\$232,262,321.76					

LEA : 124151902 Coatesville Area SD

Printed 12/17/2025 9:41:04 AM

	<u>Capital Reserve</u> <u>(1431) (32)</u>	<u>Other Capital</u> <u>Projects Fund (39)</u>	<u>Debt Service (40)</u>	<u>Permanent (90)</u>	<u>Total</u>
7000 Revenue from State Sources					
7810 State Share of Social Security and Medicare Taxes					1,697,502.48
7820 State Share of Retirement Contributions					7,989,346.60
7000 Total Revenue from State Sources					\$72,399,558.52
8000 Revenue from Federal Sources					
8514 Title I - Improving the Academic Achievement of the Disadvantaged					2,731,476.24
8515 Title II - Preparing, Training, and Recruiting High Quality Teachers and Principals					149,213.88
8516 Title III - Language Instruction for English Learners and Immigrant Students					18,947.03
8517 Title IV - 21st Century Schools					191,681.00
8744 ARP ESSER - Elementary and Secondary School Emergency Relief Fund					4,142,219.34
8751 ARP ESSER Learning Loss					0.58
8752 ARP ESSER Summer Programs					0.61
8753 ARP ESSER Afterschool Programs					(0.03)
8754 ARP ESSER Homeless Children and Youth Funds					3,747.16
8755 ARP ESSER Emergency Relief for Other Educational Entities					39,815.12
8820 Medical Assistance Reimbursement for Administrative Claiming (Quarterly) Program					623,244.29
8000 Total Revenue from Federal Sources					\$7,900,345.22
9000 Other Financing Sources					
9110 Face Value of Bonds Issued		91,285,000.00			91,285,000.00
9130 Bond Premiums		4,428,942.50			4,428,942.50
9400 Sale of or Compensation for Loss of Fixed Assets					21,376.00
9990 Insurance Recoveries					400,000.00
9000 Total Other Financing Sources		\$95,713,942.50			\$96,135,318.50
Total From All Sources	\$37,850.16	\$99,229,000.13			\$331,529,172.05

	<u>General Fund (10)</u>	<u>Student Sponsored Activity Fund (21)</u>	<u>Public Purpose Trust (27)</u>	<u>Other Compt Approved (28)</u>	<u>Athletic / Activity (29)</u>	<u>Capital Reserve (690. 1850) (31)</u>
Revenue from Local Sources	151,541,042.02					
Revenue from State Sources	72,399,558.52					
Revenue from Federal Sources	7,900,345.22					
Other Financing Sources	421,376.00					
Total From All Sources	\$232,262,321.76					

	<u>Capital Reserve (1431)</u> <u>(32)</u>	<u>Other Capital Projects</u> <u>Fund (39)</u>	<u>Debt Service (40)</u>	<u>Permanent (90)</u>	<u>Total</u>
Revenue from Local Sources	37,850.16	3,515,057.63			155,093,949.81
Revenue from State Sources					72,399,558.52
Revenue from Federal Sources					7,900,345.22
Other Financing Sources		95,713,942.50			96,135,318.50
Total From All Sources	\$37,850.16	\$99,229,000.13			\$331,529,172.05

LEA : 124151902 Coatesville Area SD

Printed 12/17/2025 9:41:14 AM

General Fund (10)

	<u>Total</u>
1000 Instruction	
100 Personnel Services – Salaries	
120 Professional – Educational	30,502,863.20
190 Instructional Assistant	762,144.36
Total Personnel Services – Salaries	\$31,265,007.56
200 Personnel Services – Employee Benefits	
210 Group Insurance – Contracted Provider	91,141.26
220 Social Security Contributions	2,298,758.71
230 PSERS Retirement Contributions	10,564,644.57
250 Unemployment Compensation	4,373.17
260 Workers' Compensation	108,225.12
270 Group Insurance – Self-Insurance	6,682,080.06
292 Health Savings Accounts	12,833.86
Total Personnel Services – Employee Benefits	\$19,762,056.75
300 Purchased Professional and Technical Services	
322 Professional Educational Services – Ius	17,974,707.31
323 Professional Educational Services – Other Educational Agencies	135,701.07
329 Professional Educational Services – Other	9,849,050.55
330 Other Professional Services	114,410.94
360 Employee Training and Development Services	90,330.87
390 Other Purchased Professional and Technical Services	4,321.80
Total Purchased Professional and Technical Services	\$28,168,522.54
400 Purchased Property Services	
430 Repairs and Maintenance Services	2,164.85
440 Rentals	6,447.00
Total Purchased Property Services	\$8,611.85
500 Other Purchased Services	
510 Student Transportation Services	75,570.14
550 Printing and Binding	2,512.95
561 Tuition To Other School Districts Within the State	479,460.22
562 Tuition To Pennsylvania Charter Schools	78,090,746.30
563 Tuition To Nonpublic Schools	652,972.49
564 Tuition To Career and Technology Centers	3,672,063.91
566 Tuition To Institutions of Higher Education and Technical Institutes	107,855.59
567 Tuition To Approved Private Schools (APS) and PA Chartered Schools for the Deaf and Blind	3,716,221.92
568 Tuition To Private Residential Rehabilitative Institutions (PRRI) [In-State] and Detention Centers	50,939.81
569 Tuition – Other	1,350,000.00
580 Travel	5,349.30
594 IU Payment By Withholding for Institutionalized Children’s Programs – Special Classes	2,528.20
Total Other Purchased Services	\$88,206,220.83
600 Supplies	
610 General Supplies	756,705.69
630 Food	15,839.34
640 Books and Periodicals	419,797.57
650 Supplies & Fees – Technology Related	3,248,325.32

General Fund (10)

1000 Instruction		<u>Total</u>
Total Supplies		\$4,440,667.92
800 Other Objects		
810 Dues and Fees		1,852.75
890 Miscellaneous Expenditures		18,200.82
Total Other Objects		\$20,053.57
Total 1000 Instruction		\$171,871,141.02

LEA : 124151902 Coatesville Area SD

Printed 12/17/2025 9:41:14 AM

General Fund (10)

1100 Regular Programs – Elementary / Secondary

	<u>Elementary</u>	<u>Secondary</u>	<u>Federal</u>	<u>Total</u>
100 Personnel Services – Salaries				
120 Professional – Educational	12,741,806.02	11,279,246.55	1,375,144.68	25,396,197.25
190 Instructional Assistant	207,280.66	31,990.32	13,283.16	252,554.14
Total Personnel Services – Salaries	\$12,949,086.68	\$11,311,236.87	\$1,388,427.84	\$25,648,751.39
200 Personnel Services – Employee Benefits				
210 Group Insurance – Contracted Provider	38,464.90	32,497.39	3,385.27	74,347.56
220 Social Security Contributions	955,189.42	828,873.24	102,550.88	1,886,613.54
230 PSERS Retirement Contributions	4,382,010.22	3,896,816.57	405,675.59	8,684,502.38
250 Unemployment Compensation	2,305.88	1,059.84	182.47	3,548.19
260 Workers' Compensation	45,823.06	36,625.45	7,638.37	90,086.88
270 Group Insurance – Self-Insurance	2,597,062.54	2,491,534.20	265,056.79	5,353,653.53
292 Health Savings Accounts	1,600.00	800.00		2,400.00
Total Personnel Services – Employee Benefits	\$8,022,456.02	\$7,288,206.69	\$784,489.37	\$16,095,152.08
300 Purchased Professional and Technical Services				
322 Professional Educational Services – Ius			61,380.00	61,380.00
323 Professional Educational Services – Other Educational Agencies	17,568.65	92,235.42		109,804.07
329 Professional Educational Services – Other	592,353.35	357,524.55	999.00	950,876.90
330 Other Professional Services			97,070.45	97,070.45
390 Other Purchased Professional and Technical Services			4,321.80	4,321.80
Total Purchased Professional and Technical Services	\$609,922.00	\$449,759.97	\$163,771.25	\$1,223,453.22
400 Purchased Property Services				
430 Repairs and Maintenance Services		1,509.00		1,509.00
440 Rentals		4,597.00	1,850.00	6,447.00
Total Purchased Property Services		\$6,106.00	\$1,850.00	\$7,956.00
500 Other Purchased Services				
510 Student Transportation Services	42,082.49	27,544.39	2,685.99	72,312.87
550 Printing and Binding		2,512.95		2,512.95
561 Tuition To Other School Districts Within the State	49,874.47	39,187.08		89,061.55
562 Tuition To Pennsylvania Charter Schools	22,660,088.05	17,804,354.89		40,464,442.94
566 Tuition To Institutions of Higher Education and Technical Institutes	17,256.89	90,598.70		107,855.59
568 Tuition To Private Residential Rehabilitative Institutions (PRRI) [In-State] and Detention Centers	27,831.89	21,867.92		49,699.81
580 Travel	277.62	51.10	4,248.03	4,576.75
Total Other Purchased Services	\$22,797,411.41	\$17,986,117.03	\$6,934.02	\$40,790,462.46
600 Supplies				
610 General Supplies	230,845.38	196,064.00	196,959.09	623,868.47
630 Food	1,789.63		2,433.97	4,223.60
640 Books and Periodicals	103,283.24	67,924.51	248,490.70	419,698.45
650 Supplies & Fees – Technology Related	52,272.31	67,392.19	2,927,203.88	3,046,868.38
Total Supplies	\$388,190.56	\$331,380.70	\$3,375,087.64	\$4,094,658.90
800 Other Objects				
810 Dues and Fees	119.00		1,733.75	1,852.75
890 Miscellaneous Expenditures	14,232.82	3,446.00	522.00	18,200.82

LEA : 124151902 Coatesville Area SD

Printed 12/17/2025 9:41:14 AM

General Fund (10)

1100 Regular Programs – Elementary / Secondary

	<u>Elementary</u>	<u>Secondary</u>	<u>Federal</u>	<u>Total</u>
Total Other Objects	\$14,351.82	\$3,446.00	\$2,255.75	\$20,053.57
Total 1100 Regular Programs – Elementary / Secondary	\$44,781,418.49	\$37,376,253.26	\$5,722,815.87	\$87,880,487.62

General Fund (10)

1110 Regular Programs

	<u>Elementary</u>	<u>Secondary</u>	<u>Federal</u>	<u>Total</u>
100 Personnel Services – Salaries				
120 Professional – Educational	12,741,806.02	11,279,246.55		24,021,052.57
190 Instructional Assistant	207,280.66	31,990.32		239,270.98
Total Personnel Services – Salaries	\$12,949,086.68	\$11,311,236.87		\$24,260,323.55
200 Personnel Services – Employee Benefits				
210 Group Insurance – Contracted Provider	38,464.90	32,497.39		70,962.29
220 Social Security Contributions	955,189.42	828,873.24		1,784,062.66
230 PSERS Retirement Contributions	4,382,010.22	3,896,816.57		8,278,826.79
250 Unemployment Compensation	2,305.88	1,059.84		3,365.72
260 Workers' Compensation	45,823.06	36,625.45		82,448.51
270 Group Insurance – Self-Insurance	2,597,062.54	2,491,534.20		5,088,596.74
292 Health Savings Accounts	1,600.00	800.00		2,400.00
Total Personnel Services – Employee Benefits	\$8,022,456.02	\$7,288,206.69		\$15,310,662.71
300 Purchased Professional and Technical Services				
323 Professional Educational Services – Other Educational Agencies	17,568.65	92,235.42		109,804.07
329 Professional Educational Services – Other	592,353.35	357,524.55		949,877.90
Total Purchased Professional and Technical Services	\$609,922.00	\$449,759.97		\$1,059,681.97
400 Purchased Property Services				
430 Repairs and Maintenance Services		1,509.00		1,509.00
440 Rentals		4,597.00		4,597.00
Total Purchased Property Services		\$6,106.00		\$6,106.00
500 Other Purchased Services				
510 Student Transportation Services	42,082.49	27,544.39		69,626.88
550 Printing and Binding		2,512.95		2,512.95
561 Tuition To Other School Districts Within the State	49,874.47	39,187.08		89,061.55
562 Tuition To Pennsylvania Charter Schools	22,660,088.05	17,804,354.89		40,464,442.94
566 Tuition To Institutions of Higher Education and Technical Institutes	17,256.89	90,598.70		107,855.59
568 Tuition To Private Residential Rehabilitative Institutions (PRRI) [In-State] and Detention Centers	27,831.89	21,867.92		49,699.81
580 Travel	277.62	51.10		328.72
Total Other Purchased Services	\$22,797,411.41	\$17,986,117.03		\$40,783,528.44
600 Supplies				
610 General Supplies	230,845.38	196,064.00		426,909.38
630 Food	1,789.63			1,789.63
640 Books and Periodicals	103,283.24	67,924.51		171,207.75
650 Supplies & Fees – Technology Related	52,272.31	67,392.19		119,664.50
Total Supplies	\$388,190.56	\$331,380.70		\$719,571.26
800 Other Objects				
810 Dues and Fees	119.00			119.00
890 Miscellaneous Expenditures	14,232.82	3,446.00		17,678.82
Total Other Objects	\$14,351.82	\$3,446.00		\$17,797.82
Total 1110 Regular Programs	\$44,781,418.49	\$37,376,253.26		\$82,157,671.75

General Fund (10)

1190 Federally-Funded Regular Programs

	<u>Elementary</u>	<u>Secondary</u>	<u>Federal</u>	<u>Total</u>
100 Personnel Services – Salaries				
120 Professional – Educational			1,375,144.68	1,375,144.68
190 Instructional Assistant			13,283.16	13,283.16
Total Personnel Services – Salaries			\$1,388,427.84	\$1,388,427.84
200 Personnel Services – Employee Benefits				
210 Group Insurance – Contracted Provider			3,385.27	3,385.27
220 Social Security Contributions			102,550.88	102,550.88
230 PSERS Retirement Contributions			405,675.59	405,675.59
250 Unemployment Compensation			182.47	182.47
260 Workers' Compensation			7,638.37	7,638.37
270 Group Insurance – Self-Insurance			265,056.79	265,056.79
Total Personnel Services – Employee Benefits			\$784,489.37	\$784,489.37
300 Purchased Professional and Technical Services				
322 Professional Educational Services – lus			61,380.00	61,380.00
329 Professional Educational Services – Other			999.00	999.00
330 Other Professional Services			97,070.45	97,070.45
390 Other Purchased Professional and Technical Services			4,321.80	4,321.80
Total Purchased Professional and Technical Services			\$163,771.25	\$163,771.25
400 Purchased Property Services				
440 Rentals			1,850.00	1,850.00
Total Purchased Property Services			\$1,850.00	\$1,850.00
500 Other Purchased Services				
510 Student Transportation Services			2,685.99	2,685.99
580 Travel			4,248.03	4,248.03
Total Other Purchased Services			\$6,934.02	\$6,934.02
600 Supplies				
610 General Supplies			196,959.09	196,959.09
630 Food			2,433.97	2,433.97
640 Books and Periodicals			248,490.70	248,490.70
650 Supplies & Fees – Technology Related			2,927,203.88	2,927,203.88
Total Supplies			\$3,375,087.64	\$3,375,087.64
800 Other Objects				
810 Dues and Fees			1,733.75	1,733.75
890 Miscellaneous Expenditures			522.00	522.00
Total Other Objects			\$2,255.75	\$2,255.75
Total 1190 Federally-Funded Regular Programs			\$5,722,815.87	\$5,722,815.87

General Fund (10)

1200 Special Programs – Elementary / Secondary

	<u>Elementary</u>	<u>Secondary</u>	<u>Federal</u>	<u>Total</u>
100 Personnel Services – Salaries				
120 Professional – Educational	2,596,566.63	2,326,215.12		4,922,781.75
190 Instructional Assistant	181,052.03	328,538.19		509,590.22
Total Personnel Services – Salaries	\$2,777,618.66	\$2,654,753.31		\$5,432,371.97
200 Personnel Services – Employee Benefits				
210 Group Insurance – Contracted Provider	8,493.40	7,839.71		16,333.11
220 Social Security Contributions	202,620.96	195,665.15		398,286.11
230 PSERS Retirement Contributions	925,212.47	902,494.24	(6,095.86)	1,821,610.85
250 Unemployment Compensation	420.42	379.60		800.02
260 Workers' Compensation	8,975.14	8,561.01		17,536.15
270 Group Insurance – Self-Insurance	674,904.70	616,185.22		1,291,089.92
292 Health Savings Accounts	3,200.00	7,233.86		10,433.86
Total Personnel Services – Employee Benefits	\$1,823,827.09	\$1,738,358.79	(\$6,095.86)	\$3,556,090.02
300 Purchased Professional and Technical Services				
322 Professional Educational Services – Ius	9,366,576.41	7,359,452.90	1,187,298.00	17,913,327.31
323 Professional Educational Services – Other Educational Agencies	14,502.32	11,394.68		25,897.00
329 Professional Educational Services – Other	4,848,701.13	3,809,693.74	234,431.78	8,892,826.65
330 Other Professional Services	9,710.67	7,629.82		17,340.49
Total Purchased Professional and Technical Services	\$14,239,490.53	\$11,188,171.14	\$1,421,729.78	\$26,849,391.45
500 Other Purchased Services				
510 Student Transportation Services	1,824.07	1,433.20		3,257.27
561 Tuition To Other School Districts Within the State	217,910.11	171,215.07		389,125.18
562 Tuition To Pennsylvania Charter Schools	21,070,729.88	16,555,573.48		37,626,303.36
563 Tuition To Nonpublic Schools	365,664.59	287,307.90		652,972.49
567 Tuition To Approved Private Schools (APS) and PA Chartered Schools for the Deaf and Blind	2,051,772.44	1,664,449.48		3,716,221.92
568 Tuition To Private Residential Rehabilitative Institutions (PRRI) [In-State] and Detention Centers	694.40	545.60		1,240.00
569 Tuition – Other	756,000.00	594,000.00		1,350,000.00
580 Travel	432.63	339.92		772.55
594 IU Payment By Withholding for Institutionalized Children’s Programs – Special Classes	1,415.80	1,112.40		2,528.20
Total Other Purchased Services	\$24,466,443.92	\$19,275,977.05		\$43,742,420.97
600 Supplies				
610 General Supplies	53,724.92	42,553.75	9,954.82	106,233.49
630 Food	6,504.82	5,110.92		11,615.74
640 Books and Periodicals	99.12			99.12
650 Supplies & Fees – Technology Related	73,641.08	57,860.86		131,501.94
Total Supplies	\$133,969.94	\$105,525.53	\$9,954.82	\$249,450.29
Total 1200 Special Programs – Elementary / Secondary	\$43,441,350.14	\$34,962,785.82	\$1,425,588.74	\$79,829,724.70

LEA : 124151902 Coatesville Area SD

Printed 12/17/2025 9:41:14 AM

General Fund (10)

1210 Life Skills Support

	<u>Elementary</u>	<u>Secondary</u>	<u>Federal</u>	<u>Total</u>
100 Personnel Services – Salaries				
190 Instructional Assistant	560.00	25,919.09		26,479.09
Total Personnel Services – Salaries	\$560.00	\$25,919.09		\$26,479.09
200 Personnel Services – Employee Benefits				
210 Group Insurance – Contracted Provider		136.21		136.21
220 Social Security Contributions	42.83	1,984.52		2,027.35
230 PSERS Retirement Contributions		8,637.41		8,637.41
250 Unemployment Compensation		7.38		7.38
260 Workers' Compensation	5.05	79.19		84.24
Total Personnel Services – Employee Benefits	\$47.88	\$10,844.71		\$10,892.59
600 Supplies				
610 General Supplies	5,435.73	4,270.94		9,706.67
630 Food	6,504.82	5,110.92		11,615.74
Total Supplies	\$11,940.55	\$9,381.86		\$21,322.41
Total 1210 Life Skills Support	\$12,548.43	\$46,145.66		\$58,694.09

LEA : 124151902 Coatesville Area SD

Printed 12/17/2025 9:41:14 AM

General Fund (10)

1220 Sensory Support

300 Purchased Professional and Technical Services

	<u>Elementary</u>	<u>Secondary</u>	<u>Federal</u>	<u>Total</u>
322 Professional Educational Services – lus			6,670.00	6,670.00
Total Purchased Professional and Technical Services			\$6,670.00	\$6,670.00

500 Other Purchased Services

567 Tuition To Approved Private Schools (APS) and PA Chartered Schools for the Deaf and Blind	11,724.74	61,554.86		73,279.60
Total Other Purchased Services	\$11,724.74	\$61,554.86		\$73,279.60

600 Supplies

610 General Supplies	192.52	151.28		343.80
Total Supplies	\$192.52	\$151.28		\$343.80

Total 1220 Sensory Support

	\$11,917.26	\$61,706.14	\$6,670.00	\$80,293.40
--	--------------------	--------------------	-------------------	--------------------

LEA : 124151902 Coatesville Area SD

Printed 12/17/2025 9:41:14 AM

General Fund (10)

1230 Emotional Support

	<u>Elementary</u>	<u>Secondary</u>	<u>Federal</u>	<u>Total</u>
100 Personnel Services – Salaries				
120 Professional – Educational	71,015.00	89,796.00		160,811.00
Total Personnel Services – Salaries	\$71,015.00	\$89,796.00		\$160,811.00
200 Personnel Services – Employee Benefits				
210 Group Insurance – Contracted Provider	224.88	248.76		473.64
220 Social Security Contributions	4,714.41	6,585.33		11,299.74
230 PSERS Retirement Contributions	24,074.15	30,440.75		54,514.90
250 Unemployment Compensation	9.80	10.03		19.83
260 Workers' Compensation	228.23	294.59		522.82
270 Group Insurance – Self-Insurance	27,102.87	27,249.02		54,351.89
Total Personnel Services – Employee Benefits	\$56,354.34	\$64,828.48		\$121,182.82
500 Other Purchased Services				
561 Tuition To Other School Districts Within the State	19,581.75	15,385.65		34,967.40
580 Travel	432.63	339.92		772.55
Total Other Purchased Services	\$20,014.38	\$15,725.57		\$35,739.95
600 Supplies				
610 General Supplies	20,048.73	15,752.57		35,801.30
650 Supplies & Fees – Technology Related	272.16	213.84		486.00
Total Supplies	\$20,320.89	\$15,966.41		\$36,287.30
Total 1230 Emotional Support	\$167,704.61	\$186,316.46		\$354,021.07

General Fund (10)

1240 Academic Support

	<u>Elementary</u>	<u>Secondary</u>	<u>Federal</u>	<u>Total</u>
100 Personnel Services – Salaries				
120 Professional – Educational	2,463,261.43	2,183,894.32		4,647,155.75
190 Instructional Assistant	173,929.21	272,450.01		446,379.22
Total Personnel Services – Salaries	\$2,637,190.64	\$2,456,344.33		\$5,093,534.97
200 Personnel Services – Employee Benefits				
210 Group Insurance – Contracted Provider	8,268.52	7,318.53		15,587.05
220 Social Security Contributions	192,618.66	180,959.96		373,578.62
230 PSERS Retirement Contributions	874,383.40	832,700.81		1,707,084.21
250 Unemployment Compensation	391.76	347.56		739.32
260 Workers' Compensation	8,481.48	7,931.01		16,412.49
270 Group Insurance – Self-Insurance	647,801.83	561,885.39		1,209,687.22
292 Health Savings Accounts	3,200.00	5,633.86		8,833.86
Total Personnel Services – Employee Benefits	\$1,735,145.65	\$1,596,777.12		\$3,331,922.77
300 Purchased Professional and Technical Services				
329 Professional Educational Services – Other	4,848,701.13	3,809,693.74	234,431.78	8,892,826.65
Total Purchased Professional and Technical Services	\$4,848,701.13	\$3,809,693.74	\$234,431.78	\$8,892,826.65
500 Other Purchased Services				
510 Student Transportation Services	1,824.07	1,433.20		3,257.27
Total Other Purchased Services	\$1,824.07	\$1,433.20		\$3,257.27
600 Supplies				
610 General Supplies	24,252.33	19,396.69		43,649.02
640 Books and Periodicals	99.12			99.12
650 Supplies & Fees – Technology Related	64,841.99	50,947.28		115,789.27
Total Supplies	\$89,193.44	\$70,343.97		\$159,537.41
Total 1240 Academic Support	\$9,312,054.93	\$7,934,592.36	\$234,431.78	\$17,481,079.07

LEA : 124151902 Coatesville Area SD

Printed 12/17/2025 9:41:14 AM

General Fund (10)

1241 Learning Support – Public

	<u>Elementary</u>	<u>Secondary</u>	<u>Federal</u>	<u>Total</u>
100 Personnel Services – Salaries				
120 Professional – Educational	2,360,923.43	2,031,796.32		4,392,719.75
190 Instructional Assistant	173,929.21	272,450.01		446,379.22
Total Personnel Services – Salaries	\$2,534,852.64	\$2,304,246.33		\$4,839,098.97
200 Personnel Services – Employee Benefits				
210 Group Insurance – Contracted Provider	8,003.16	6,855.54		14,858.70
220 Social Security Contributions	185,309.14	170,156.87		355,466.01
230 PSERS Retirement Contributions	839,690.84	781,139.58		1,620,830.42
250 Unemployment Compensation	382.08	332.50		714.58
260 Workers' Compensation	8,151.10	7,435.24		15,586.34
270 Group Insurance – Self-Insurance	620,118.85	506,542.24		1,126,661.09
292 Health Savings Accounts	3,200.00	5,633.86		8,833.86
Total Personnel Services – Employee Benefits	\$1,664,855.17	\$1,478,095.83		\$3,142,951.00
300 Purchased Professional and Technical Services				
329 Professional Educational Services – Other	4,848,701.13	3,809,693.74	234,431.78	8,892,826.65
Total Purchased Professional and Technical Services	\$4,848,701.13	\$3,809,693.74	\$234,431.78	\$8,892,826.65
500 Other Purchased Services				
510 Student Transportation Services	1,824.07	1,433.20		3,257.27
Total Other Purchased Services	\$1,824.07	\$1,433.20		\$3,257.27
600 Supplies				
610 General Supplies	1,912.76	1,844.18		3,756.94
650 Supplies & Fees – Technology Related	64,841.99	50,947.28		115,789.27
Total Supplies	\$66,754.75	\$52,791.46		\$119,546.21
Total 1241 Learning Support – Public	\$9,116,987.76	\$7,646,260.56	\$234,431.78	\$16,997,680.10

LEA : 124151902 Coatesville Area SD

Printed 12/17/2025 9:41:14 AM

General Fund (10)

1243 Gifted Support

	<u>Elementary</u>	<u>Secondary</u>	<u>Federal</u>	<u>Total</u>
100 Personnel Services – Salaries				
120 Professional – Educational	102,338.00	152,098.00		254,436.00
Total Personnel Services – Salaries	\$102,338.00	\$152,098.00		\$254,436.00
200 Personnel Services – Employee Benefits				
210 Group Insurance – Contracted Provider	265.36	462.99		728.35
220 Social Security Contributions	7,309.52	10,803.09		18,112.61
230 PSERS Retirement Contributions	34,692.56	51,561.23		86,253.79
250 Unemployment Compensation	9.68	15.06		24.74
260 Workers' Compensation	330.38	495.77		826.15
270 Group Insurance – Self-Insurance	27,682.98	55,343.15		83,026.13
Total Personnel Services – Employee Benefits	\$70,290.48	\$118,681.29		\$188,971.77
600 Supplies				
610 General Supplies	22,339.57	17,552.51		39,892.08
640 Books and Periodicals	99.12			99.12
Total Supplies	\$22,438.69	\$17,552.51		\$39,991.20
Total 1243 Gifted Support	\$195,067.17	\$288,331.80		\$483,398.97

LEA : 124151902 Coatesville Area SD

Printed 12/17/2025 9:41:14 AM

General Fund (10)

1270 Multi-Handicapped Support

300 Purchased Professional and Technical Services

322 Professional Educational Services – lus

Total Purchased Professional and Technical Services

Total 1270 Multi-Handicapped Support

Elementary

Secondary

Federal

Total

1,180,628.00

1,180,628.00

\$1,180,628.00

\$1,180,628.00

\$1,180,628.00

\$1,180,628.00

LEA : 124151902 Coatesville Area SD

Printed 12/17/2025 9:41:14 AM

General Fund (10)

	<u>Elementary</u>	<u>Secondary</u>	<u>Federal</u>	<u>Total</u>
1290 Special Programs - Other Support				
100 Personnel Services – Salaries				
120 Professional – Educational	62,290.20	52,524.80		114,815.00
190 Instructional Assistant	6,562.82	30,169.09		36,731.91
Total Personnel Services – Salaries	\$68,853.02	\$82,693.89		\$151,546.91
200 Personnel Services – Employee Benefits				
210 Group Insurance – Contracted Provider		136.21		136.21
220 Social Security Contributions	5,245.06	6,135.34		11,380.40
230 PSERS Retirement Contributions	26,754.92	30,715.27	(6,095.86)	51,374.33
250 Unemployment Compensation	18.86	14.63		33.49
260 Workers' Compensation	260.38	256.22		516.60
270 Group Insurance – Self-Insurance		27,050.81		27,050.81
292 Health Savings Accounts		1,600.00		1,600.00
Total Personnel Services – Employee Benefits	\$32,279.22	\$65,908.48	(\$6,095.86)	\$92,091.84
300 Purchased Professional and Technical Services				
322 Professional Educational Services – Ius	9,366,576.41	7,359,452.90		16,726,029.31
323 Professional Educational Services – Other Educational Agencies	14,502.32	11,394.68		25,897.00
330 Other Professional Services	9,710.67	7,629.82		17,340.49
Total Purchased Professional and Technical Services	\$9,390,789.40	\$7,378,477.40		\$16,769,266.80
500 Other Purchased Services				
561 Tuition To Other School Districts Within the State	198,328.36	155,829.42		354,157.78
562 Tuition To Pennsylvania Charter Schools	21,070,729.88	16,555,573.48		37,626,303.36
563 Tuition To Nonpublic Schools	365,664.59	287,307.90		652,972.49
567 Tuition To Approved Private Schools (APS) and PA Chartered Schools for the Deaf and Blind	2,040,047.70	1,602,894.62		3,642,942.32
568 Tuition To Private Residential Rehabilitative Institutions (PRRI) [In-State] and Detention Centers	694.40	545.60		1,240.00
569 Tuition – Other	756,000.00	594,000.00		1,350,000.00
594 IU Payment By Withholding for Institutionalized Children’s Programs – Special Classes	1,415.80	1,112.40		2,528.20
Total Other Purchased Services	\$24,432,880.73	\$19,197,263.42		\$43,630,144.15
600 Supplies				
610 General Supplies	3,795.61	2,982.27	9,954.82	16,732.70
650 Supplies & Fees – Technology Related	8,526.93	6,699.74		15,226.67
Total Supplies	\$12,322.54	\$9,682.01	\$9,954.82	\$31,959.37
Total 1290 Special Programs - Other Support	\$33,937,124.91	\$26,734,025.20	\$3,858.96	\$60,675,009.07

General Fund (10)

1300 Vocational Education

	<u>Elementary</u>	<u>Secondary</u>	<u>Federal</u>	<u>Total</u>
100 Personnel Services – Salaries				
120 Professional – Educational		159,672.50		159,672.50
Total Personnel Services – Salaries		\$159,672.50		\$159,672.50
200 Personnel Services – Employee Benefits				
210 Group Insurance – Contracted Provider		460.59		460.59
220 Social Security Contributions		12,043.14		12,043.14
230 PSERS Retirement Contributions		50,323.62		50,323.62
250 Unemployment Compensation		20.40		20.40
260 Workers' Compensation		512.56		512.56
270 Group Insurance – Self-Insurance		37,336.61		37,336.61
Total Personnel Services – Employee Benefits		\$100,696.92		\$100,696.92
400 Purchased Property Services				
430 Repairs and Maintenance Services		655.85		655.85
Total Purchased Property Services		\$655.85		\$655.85
500 Other Purchased Services				
564 Tuition To Career and Technology Centers		3,672,063.91		3,672,063.91
Total Other Purchased Services		\$3,672,063.91		\$3,672,063.91
600 Supplies				
610 General Supplies		26,603.73		26,603.73
Total Supplies		\$26,603.73		\$26,603.73
Total 1300 Vocational Education		\$3,959,692.91		\$3,959,692.91

General Fund (10)

	<u>Elementary</u>	<u>Secondary</u>	<u>Federal</u>	<u>Total</u>
1400 Other Instructional Programs – Elementary / Secondary				
100 Personnel Services – Salaries				
120 Professional – Educational	5,437.95	18,773.75		24,211.70
Total Personnel Services – Salaries	\$5,437.95	\$18,773.75		\$24,211.70
200 Personnel Services – Employee Benefits				
220 Social Security Contributions	406.72	1,409.20		1,815.92
230 PSERS Retirement Contributions	1,843.46	6,364.26		8,207.72
250 Unemployment Compensation	1.37	3.19		4.56
260 Workers' Compensation	28.48	61.05		89.53
Total Personnel Services – Employee Benefits	\$2,280.03	\$7,837.70		\$10,117.73
500 Other Purchased Services				
561 Tuition To Other School Districts Within the State	713.15	560.34		1,273.49
Total Other Purchased Services	\$713.15	\$560.34		\$1,273.49
600 Supplies				
650 Supplies & Fees – Technology Related	19,592.16	15,393.84		34,986.00
Total Supplies	\$19,592.16	\$15,393.84		\$34,986.00
Total 1400 Other Instructional Programs – Elementary / Secondary	\$28,023.29	\$42,565.63		\$70,588.92

General Fund (10)

	<u>Elementary</u>	<u>Secondary</u>	<u>Federal</u>	<u>Total</u>
1430 Homebound Instruction				
100 Personnel Services – Salaries				
120 Professional – Educational	831.06	2,417.94		3,249.00
Total Personnel Services – Salaries	\$831.06	\$2,417.94		\$3,249.00
200 Personnel Services – Employee Benefits				
220 Social Security Contributions	63.01	183.79		246.80
230 PSERS Retirement Contributions	281.73	819.70		1,101.43
260 Workers’ Compensation	3.38	0.14		3.52
Total Personnel Services – Employee Benefits	\$348.12	\$1,003.63		\$1,351.75
Total 1430 Homebound Instruction	\$1,179.18	\$3,421.57		\$4,600.75

LEA : 124151902 Coatesville Area SD

Printed 12/17/2025 9:41:14 AM

General Fund (10)

	<u>Elementary</u>	<u>Secondary</u>	<u>Federal</u>	<u>Total</u>
1440 Alternative Regular Education Programs				
500 Other Purchased Services				
561 Tuition To Other School Districts Within the State	713.15	560.34		1,273.49
Total Other Purchased Services	\$713.15	\$560.34		\$1,273.49
600 Supplies				
650 Supplies & Fees – Technology Related	19,592.16	15,393.84		34,986.00
Total Supplies	\$19,592.16	\$15,393.84		\$34,986.00
Total 1440 Alternative Regular Education Programs	\$20,305.31	\$15,954.18		\$36,259.49

LEA : 124151902 Coatesville Area SD

Printed 12/17/2025 9:41:14 AM

General Fund (10)

1441 Adjudicated / Court-Placed Programs

500 Other Purchased Services

561 Tuition To Other School Districts Within the State

Total Other Purchased Services

Total 1441 Adjudicated / Court-Placed Programs

Elementary

Secondary

Federal

Total

713.15

560.34

1,273.49

\$713.15

\$560.34

\$1,273.49

\$713.15

\$560.34

\$1,273.49

LEA : 124151902 Coatesville Area SD

Printed 12/17/2025 9:41:14 AM

General Fund (10)

1442 Alternative Education Programs

600 Supplies

650 Supplies & Fees – Technology Related

Total Supplies

Total 1442 Alternative Education Programs

Elementary

Secondary

Federal

Total

19,592.16

15,393.84

34,986.00

\$19,592.16

\$15,393.84

\$34,986.00

\$19,592.16

\$15,393.84

\$34,986.00

General Fund (10)

	<u>Elementary</u>	<u>Secondary</u>	<u>Federal</u>	<u>Total</u>
1490 Additional Other Instructional Programs				
100 Personnel Services – Salaries				
120 Professional – Educational	4,606.89	16,355.81		20,962.70
Total Personnel Services – Salaries	\$4,606.89	\$16,355.81		\$20,962.70
200 Personnel Services – Employee Benefits				
220 Social Security Contributions	343.71	1,225.41		1,569.12
230 PSERS Retirement Contributions	1,561.73	5,544.56		7,106.29
250 Unemployment Compensation	1.37	3.19		4.56
260 Workers' Compensation	25.10	60.91		86.01
Total Personnel Services – Employee Benefits	\$1,931.91	\$6,834.07		\$8,765.98
Total 1490 Additional Other Instructional Programs	\$6,538.80	\$23,189.88		\$29,728.68

LEA : 124151902 Coatesville Area SD

Printed 12/17/2025 9:41:14 AM

General Fund (10)

1500 Nonpublic School Programs

300 Purchased Professional and Technical Services

	<u>Elementary</u>	<u>Secondary</u>	<u>Federal</u>	<u>Total</u>
329 Professional Educational Services – Other			5,347.00	5,347.00
360 Employee Training and Development Services			90,330.87	90,330.87
Total Purchased Professional and Technical Services			\$95,677.87	\$95,677.87

600 Supplies

650 Supplies & Fees – Technology Related			34,969.00	34,969.00
Total Supplies			\$34,969.00	\$34,969.00
Total 1500 Nonpublic School Programs			\$130,646.87	\$130,646.87

General Fund (10)

2000 Support Services

Total

100 Personnel Services – Salaries

100 Personnel Services – Salaries	12,555,270.31
Total Personnel Services – Salaries	\$12,555,270.31

200 Personnel Services – Employee Benefits

210 Group Insurance – Contracted Provider	49,598.07
220 Social Security Contributions	927,647.12
230 PSERS Retirement Contributions	4,174,481.85
240 Tuition Reimbursement	169,239.03
250 Unemployment Compensation	1,577.45
260 Workers' Compensation	40,601.28
270 Group Insurance – Self-Insurance	2,459,444.95
292 Health Savings Accounts	189,020.98
Total Personnel Services – Employee Benefits	\$8,011,610.73

300 Purchased Professional and Technical Services

322 Professional Educational Services – Ius	106,610.00
329 Professional Educational Services – Other	25,000.00
330 Other Professional Services	1,682,102.74
340 Technical Services	610,036.88
350 Security / Safety Services	21,139.17
360 Employee Training and Development Services	417,545.76
390 Other Purchased Professional and Technical Services	308,409.89
Total Purchased Professional and Technical Services	\$3,170,844.44

400 Purchased Property Services

410 Cleaning Services	1,653,080.10
420 Utility Services	434,802.12
430 Repairs and Maintenance Services	1,171,289.78
440 Rentals	319,005.14
460 Extermination Services	14,051.00
490 Other Purchased Property Services	1,582.04
Total Purchased Property Services	\$3,593,810.18

500 Other Purchased Services

513 Contracted Carriers	13,005,868.23
516 Student Transportation Services From the IU	74,638.41
520 Insurance – General	110,341.00
522 Automotive Liability Insurance	21,464.00
523 General Property and Liability Insurance	339,330.00
529 Other Insurance	295,830.00
530 Communications	296,884.31
549 Other Advertising/Public Relations	43,672.72
550 Printing and Binding	7,934.30
580 Travel	10,903.40
595 IU Payments By Withholding	46,924.21
Total Other Purchased Services	\$14,253,790.58

LEA : 124151902 Coatesville Area SD

Printed 12/17/2025 9:41:27 AM

General Fund (10)

2000 Support Services

Total

600 Supplies

610 General Supplies	1,126,127.84
620 Energy	1,632,429.30
630 Food	13,867.34
640 Books and Periodicals	27,841.20
650 Supplies & Fees – Technology Related	1,047,985.74

Total Supplies	\$3,848,251.42
-----------------------	-----------------------

700 Property

752 Capital Equipment – Original and Additional	810,130.43
762 Capitalized Equipment - Replacement	199,573.70

Total Property	\$1,009,704.13
-----------------------	-----------------------

800 Other Objects

810 Dues and Fees	329,034.64
820 Claims and Judgments Against the LEA	348,057.59
890 Miscellaneous Expenditures	12,659.45

Total Other Objects	\$689,751.68
----------------------------	---------------------

Total 2000 Support Services	\$47,133,033.47
------------------------------------	------------------------

LEA : 124151902 Coatesville Area SD

Printed 12/17/2025 9:41:27 AM

General Fund (10)

	<u>Elementary</u>	<u>Secondary</u>	<u>Federal</u>	<u>Total</u>
2100 Support Services – Students				
100 Personnel Services – Salaries				
100 Personnel Services – Salaries	1,000,455.50	978,249.98		2,234,089.46
Total Personnel Services – Salaries	\$1,000,455.50	\$978,249.98		\$2,234,089.46
200 Personnel Services – Employee Benefits				
210 Group Insurance – Contracted Provider	3,268.03	3,025.39	87.93	7,605.95
220 Social Security Contributions	74,270.82	71,659.33		164,588.33
230 PSERS Retirement Contributions	345,112.18	336,207.48	(12,792.00)	752,222.41
250 Unemployment Compensation	118.93	103.82		253.65
260 Workers' Compensation	3,249.14	3,152.87		7,185.85
270 Group Insurance – Self-Insurance	192,681.65	201,747.94		452,284.75
292 Health Savings Accounts	4,256.00	5,744.00		17,800.00
Total Personnel Services – Employee Benefits	\$622,956.75	\$621,640.83	(\$12,704.07)	\$1,401,940.94
300 Purchased Professional and Technical Services				
329 Professional Educational Services – Other	14,000.00	11,000.00		25,000.00
330 Other Professional Services	264,736.99	208,007.62		567,497.66
390 Other Purchased Professional and Technical Services				10,517.04
Total Purchased Professional and Technical Services	\$278,736.99	\$219,007.62		\$603,014.70
500 Other Purchased Services				
580 Travel	90.95	71.45		162.40
Total Other Purchased Services	\$90.95	\$71.45		\$162.40
600 Supplies				
610 General Supplies	7,000.92	4,583.86		11,624.78
630 Food	381.58	299.81		681.39
650 Supplies & Fees – Technology Related	67,936.47	53,378.66		121,315.13
Total Supplies	\$75,318.97	\$58,262.33		\$133,621.30
800 Other Objects				
810 Dues and Fees	338.80	266.20		695.00
890 Miscellaneous Expenditures		12,659.45		12,659.45
Total Other Objects	\$338.80	\$12,925.65		\$13,354.45
Total 2100 Support Services – Students	\$1,977,897.96	\$1,890,157.86	(\$12,704.07)	\$4,386,183.25

LEA : 124151902 Coatesville Area SD

Printed 12/17/2025 9:41:27 AM

General Fund (10)

	<u>Elementary</u>	<u>Secondary</u>	<u>Federal</u>	<u>Total</u>
2110 Supervision of Student Services				
100 Personnel Services – Salaries				
100 Personnel Services – Salaries	186,408.85	146,464.06		332,872.91
Total Personnel Services – Salaries	\$186,408.85	\$146,464.06		\$332,872.91
200 Personnel Services – Employee Benefits				
210 Group Insurance – Contracted Provider	858.93	674.90		1,533.83
220 Social Security Contributions	13,800.37	10,843.14		24,643.51
230 PSERS Retirement Contributions	61,986.72	48,703.85		110,690.57
250 Unemployment Compensation	16.48	12.95		29.43
260 Workers' Compensation	596.08	468.35		1,064.43
270 Group Insurance – Self-Insurance	37,722.60	29,639.18		67,361.78
292 Health Savings Accounts	4,256.00	3,344.00		7,600.00
Total Personnel Services – Employee Benefits	\$119,237.18	\$93,686.37		\$212,923.55
300 Purchased Professional and Technical Services				
330 Other Professional Services	38,149.80	29,974.84		68,124.64
Total Purchased Professional and Technical Services	\$38,149.80	\$29,974.84		\$68,124.64
500 Other Purchased Services				
580 Travel	90.95	71.45		162.40
Total Other Purchased Services	\$90.95	\$71.45		\$162.40
600 Supplies				
610 General Supplies	288.14	226.40		514.54
650 Supplies & Fees – Technology Related	67,936.47	53,378.66		121,315.13
Total Supplies	\$68,224.61	\$53,605.06		\$121,829.67
800 Other Objects				
810 Dues and Fees	338.80	266.20		605.00
Total Other Objects	\$338.80	\$266.20		\$605.00
Total 2110 Supervision of Student Services	\$412,450.19	\$324,067.98		\$736,518.17

General Fund (10)

	<u>Elementary</u>	<u>Secondary</u>	<u>Federal</u>	<u>Total</u>
2111 Supervision of Student Services – Head of Component				
100 Personnel Services – Salaries				
100 Personnel Services – Salaries	186,408.85	146,464.06		332,872.91
Total Personnel Services – Salaries	\$186,408.85	\$146,464.06		\$332,872.91
200 Personnel Services – Employee Benefits				
210 Group Insurance – Contracted Provider	858.93	674.90		1,533.83
220 Social Security Contributions	13,800.37	10,843.14		24,643.51
230 PSERS Retirement Contributions	61,986.72	48,703.85		110,690.57
250 Unemployment Compensation	16.48	12.95		29.43
260 Workers' Compensation	596.08	468.35		1,064.43
270 Group Insurance – Self-Insurance	37,722.60	29,639.18		67,361.78
292 Health Savings Accounts	4,256.00	3,344.00		7,600.00
Total Personnel Services – Employee Benefits	\$119,237.18	\$93,686.37		\$212,923.55
300 Purchased Professional and Technical Services				
330 Other Professional Services	38,149.80	29,974.84		68,124.64
Total Purchased Professional and Technical Services	\$38,149.80	\$29,974.84		\$68,124.64
500 Other Purchased Services				
580 Travel	90.95	71.45		162.40
Total Other Purchased Services	\$90.95	\$71.45		\$162.40
600 Supplies				
610 General Supplies	288.14	226.40		514.54
650 Supplies & Fees – Technology Related	67,936.47	53,378.66		121,315.13
Total Supplies	\$68,224.61	\$53,605.06		\$121,829.67
800 Other Objects				
810 Dues and Fees	338.80	266.20		605.00
Total Other Objects	\$338.80	\$266.20		\$605.00
Total 2111 Supervision of Student Services – Head of Component	\$412,450.19	\$324,067.98		\$736,518.17

General Fund (10)

	<u>Elementary</u>	<u>Secondary</u>	<u>Federal</u>	<u>Total</u>
2120 Guidance Services				
100 Personnel Services – Salaries				
100 Personnel Services – Salaries	537,208.12	831,785.92		1,368,994.04
Total Personnel Services – Salaries	\$537,208.12	\$831,785.92		\$1,368,994.04
200 Personnel Services – Employee Benefits				
210 Group Insurance – Contracted Provider	1,938.35	2,350.49	87.93	4,376.77
220 Social Security Contributions	39,737.28	60,816.19		100,553.47
230 PSERS Retirement Contributions	189,277.28	287,503.63	(12,792.00)	463,988.91
250 Unemployment Compensation	71.52	90.87		162.39
260 Workers' Compensation	1,753.48	2,684.52		4,438.00
270 Group Insurance – Self-Insurance	135,651.79	172,108.76		307,760.55
292 Health Savings Accounts		2,400.00		2,400.00
Total Personnel Services – Employee Benefits	\$368,429.70	\$527,954.46	(\$12,704.07)	\$883,680.09
600 Supplies				
610 General Supplies	6,257.98	4,000.10		10,258.08
630 Food	381.58	299.81		681.39
Total Supplies	\$6,639.56	\$4,299.91		\$10,939.47
800 Other Objects				
890 Miscellaneous Expenditures		12,659.45		12,659.45
Total Other Objects		\$12,659.45		\$12,659.45
Total 2120 Guidance Services	\$912,277.38	\$1,376,699.74	(\$12,704.07)	\$2,276,273.05

General Fund (10)

2130 Attendance Services

Elementary

Secondary

Federal

Total

100 Personnel Services – Salaries

100 Personnel Services – Salaries

255,383.98

Total Personnel Services – Salaries

\$255,383.98

200 Personnel Services – Employee Benefits

210 Group Insurance – Contracted Provider

1,224.60

220 Social Security Contributions

18,658.18

230 PSERS Retirement Contributions

83,694.75

250 Unemployment Compensation

30.90

260 Workers' Compensation

783.84

270 Group Insurance – Self-Insurance

57,855.16

292 Health Savings Accounts

7,800.00

Total Personnel Services – Employee Benefits

\$170,047.43

300 Purchased Professional and Technical Services

390 Other Purchased Professional and Technical Services

10,517.04

Total Purchased Professional and Technical Services

\$10,517.04

600 Supplies

610 General Supplies

40.00

Total Supplies

\$40.00

Total 2130 Attendance Services

\$435,988.45

General Fund (10)

	<u>Elementary</u>	<u>Secondary</u>	<u>Federal</u>	<u>Total</u>
2140 Psychological Services				
100 Personnel Services – Salaries				
100 Personnel Services – Salaries	276,838.53			276,838.53
Total Personnel Services – Salaries	\$276,838.53			\$276,838.53
200 Personnel Services – Employee Benefits				
210 Group Insurance – Contracted Provider	470.75			470.75
220 Social Security Contributions	20,733.17			20,733.17
230 PSERS Retirement Contributions	93,848.18			93,848.18
250 Unemployment Compensation	30.93			30.93
260 Workers' Compensation	899.58			899.58
270 Group Insurance – Self-Insurance	19,307.26			19,307.26
Total Personnel Services – Employee Benefits	\$135,289.87			\$135,289.87
300 Purchased Professional and Technical Services				
329 Professional Educational Services – Other	14,000.00	11,000.00		25,000.00
330 Other Professional Services	226,587.19	178,032.78		404,619.97
Total Purchased Professional and Technical Services	\$240,587.19	\$189,032.78		\$429,619.97
600 Supplies				
610 General Supplies	454.80	357.36		812.16
Total Supplies	\$454.80	\$357.36		\$812.16
Total 2140 Psychological Services	\$653,170.39	\$189,390.14		\$842,560.53

LEA : 124151902 Coatesville Area SD

Printed 12/17/2025 9:41:27 AM

General Fund (10)

2160 Social Work Services

Elementary

Secondary

Federal

Total

300 Purchased Professional and Technical Services

330 Other Professional Services

94,753.05

Total Purchased Professional and Technical Services

\$94,753.05

Total 2160 Social Work Services

\$94,753.05

LEA : 124151902 Coatesville Area SD

Printed 12/17/2025 9:41:27 AM

General Fund (10)

2170 Student Accounting Services

Elementary

Secondary

Federal

Total

800 Other Objects

810 Dues and Fees

90.00

Total Other Objects

\$90.00

Total 2170 Student Accounting Services

\$90.00

General Fund (10)

2200 Support Services – Instructional Staff

	<u>Elementary</u>	<u>Secondary</u>	<u>Federal</u>	<u>Total</u>
100 Personnel Services – Salaries				
100 Personnel Services – Salaries	1,016,995.42	904,206.15	133,283.52	2,054,485.09
Total Personnel Services – Salaries	\$1,016,995.42	\$904,206.15	\$133,283.52	\$2,054,485.09
200 Personnel Services – Employee Benefits				
210 Group Insurance – Contracted Provider	4,512.08	4,038.35	792.78	9,343.21
220 Social Security Contributions	76,429.87	67,619.73	9,578.75	153,628.35
230 PSERS Retirement Contributions	378,178.63	334,402.09	(26,217.74)	686,362.98
240 Tuition Reimbursement	115,006.74	62,779.29		177,786.03
250 Unemployment Compensation	172.32	170.20	14.25	356.77
260 Workers' Compensation	3,365.13	2,966.45	737.46	7,069.04
270 Group Insurance – Self-Insurance	148,953.60	168,777.50	35,563.95	353,295.05
292 Health Savings Accounts	24,921.09	21,180.86	3,496.14	49,598.09
Total Personnel Services – Employee Benefits	\$751,539.46	\$661,934.47	\$23,965.59	\$1,437,439.52
300 Purchased Professional and Technical Services				
322 Professional Educational Services – Ius	7,980.00	6,270.00	92,360.00	106,610.00
330 Other Professional Services	23,409.97	18,393.54		41,803.51
360 Employee Training and Development Services	49,172.81	39,168.40	299,139.87	387,481.08
Total Purchased Professional and Technical Services	\$80,562.78	\$63,831.94	\$391,499.87	\$535,894.59
400 Purchased Property Services				
440 Rentals	4,822.28	3,788.92		8,611.20
Total Purchased Property Services	\$4,822.28	\$3,788.92		\$8,611.20
500 Other Purchased Services				
580 Travel	278.20	218.60		496.80
Total Other Purchased Services	\$278.20	\$218.60		\$496.80
600 Supplies				
610 General Supplies	51,326.09	1,859.99		53,186.08
630 Food	2,286.73	1,796.72		4,083.45
640 Books and Periodicals	15,480.96	12,332.24		27,813.20
650 Supplies & Fees – Technology Related	184,909.65	145,522.38		330,432.03
Total Supplies	\$254,003.43	\$161,511.33		\$415,514.76
800 Other Objects				
810 Dues and Fees	1,591.79	1,250.70		2,842.49
Total Other Objects	\$1,591.79	\$1,250.70		\$2,842.49
Total 2200 Support Services – Instructional Staff	\$2,109,793.36	\$1,796,742.11	\$548,748.98	\$4,455,284.45

LEA : 124151902 Coatesville Area SD

Printed 12/17/2025 9:41:27 AM

General Fund (10)

	<u>Elementary</u>	<u>Secondary</u>	<u>Federal</u>	<u>Total</u>
2240 Computer-Assisted Instruction Support Services				
100 Personnel Services – Salaries				
100 Personnel Services – Salaries	517,219.12	406,386.42		923,605.54
Total Personnel Services – Salaries	\$517,219.12	\$406,386.42		\$923,605.54
200 Personnel Services – Employee Benefits				
210 Group Insurance – Contracted Provider	2,508.89	1,971.28		4,480.17
220 Social Security Contributions	38,753.00	30,448.78		69,201.78
230 PSERS Retirement Contributions	173,948.47	136,673.80		310,622.27
250 Unemployment Compensation	82.14	64.54		146.68
260 Workers' Compensation	1,655.65	1,300.86		2,956.51
270 Group Insurance – Self-Insurance	96,689.32	75,970.20		172,659.52
292 Health Savings Accounts	15,157.69	11,909.62		27,067.31
Total Personnel Services – Employee Benefits	\$328,795.16	\$258,339.08		\$587,134.24
Total 2240 Computer-Assisted Instruction Support Services	\$846,014.28	\$664,725.50		\$1,510,739.78

General Fund (10)

2250 School Library Services

	<u>Elementary</u>	<u>Secondary</u>	<u>Federal</u>	<u>Total</u>
100 Personnel Services – Salaries				
100 Personnel Services – Salaries	41,474.92	110,031.58		151,506.50
Total Personnel Services – Salaries	\$41,474.92	\$110,031.58		\$151,506.50
200 Personnel Services – Employee Benefits				
210 Group Insurance – Contracted Provider	45.05	423.17		468.22
220 Social Security Contributions	3,175.09	7,988.63		11,163.72
230 PSERS Retirement Contributions	13,870.14	37,151.42		51,021.56
250 Unemployment Compensation	54.82	66.47		121.29
260 Workers' Compensation	245.66	425.82		671.48
270 Group Insurance – Self-Insurance		48,221.91		48,221.91
292 Health Savings Accounts		1,600.00		1,600.00
Total Personnel Services – Employee Benefits	\$17,390.76	\$95,877.42		\$113,268.18
600 Supplies				
610 General Supplies	340.79	1,859.99		2,200.78
640 Books and Periodicals	210.39	333.94		544.33
650 Supplies & Fees – Technology Related	237.08	422.50		659.58
Total Supplies	\$788.26	\$2,616.43		\$3,404.69
Total 2250 School Library Services	\$59,653.94	\$208,525.43		\$268,179.37

General Fund (10)

2260 Instruction and Curriculum Development Services

	<u>Elementary</u>	<u>Secondary</u>	<u>Federal</u>	<u>Total</u>
100 Personnel Services – Salaries				
100 Personnel Services – Salaries	458,301.38	387,788.15	125,693.02	971,782.55
Total Personnel Services – Salaries	\$458,301.38	\$387,788.15	\$125,693.02	\$971,782.55
200 Personnel Services – Employee Benefits				
210 Group Insurance – Contracted Provider	1,958.14	1,643.90	792.78	4,394.82
220 Social Security Contributions	34,501.78	29,182.32	9,004.34	72,688.44
230 PSERS Retirement Contributions	189,673.03	158,417.16	(25,944.27)	322,145.92
250 Unemployment Compensation	35.36	39.19	10.30	84.85
260 Workers' Compensation	1,463.82	1,239.77	668.79	3,372.38
270 Group Insurance – Self-Insurance	52,264.28	44,585.39	35,563.95	132,413.62
292 Health Savings Accounts	9,763.40	7,671.24	3,496.14	20,930.78
Total Personnel Services – Employee Benefits	\$289,659.81	\$242,778.97	\$23,592.03	\$556,030.81
300 Purchased Professional and Technical Services				
330 Other Professional Services	23,409.97	18,393.54		41,803.51
Total Purchased Professional and Technical Services	\$23,409.97	\$18,393.54		\$41,803.51
400 Purchased Property Services				
440 Rentals	4,822.28	3,788.92		8,611.20
Total Purchased Property Services	\$4,822.28	\$3,788.92		\$8,611.20
500 Other Purchased Services				
580 Travel	278.20	218.60		496.80
Total Other Purchased Services	\$278.20	\$218.60		\$496.80
600 Supplies				
610 General Supplies	50,985.30			50,985.30
630 Food	2,286.73	1,796.72		4,083.45
640 Books and Periodicals	15,270.57	11,998.30		27,268.87
650 Supplies & Fees – Technology Related	184,672.57	145,099.88		329,772.45
Total Supplies	\$253,215.17	\$158,894.90		\$412,110.07
800 Other Objects				
810 Dues and Fees	1,591.79	1,250.70		2,842.49
Total Other Objects	\$1,591.79	\$1,250.70		\$2,842.49
Total 2260 Instruction and Curriculum Development Services	\$1,031,278.60	\$813,113.78	\$149,285.05	\$1,993,677.43

General Fund (10)

2270 Instructional Staff Professional Development Services	<u>Elementary</u>	<u>Secondary</u>	<u>Federal</u>	<u>Total</u>
100 Personnel Services – Salaries				
100 Personnel Services – Salaries			7,590.50	7,590.50
Total Personnel Services – Salaries			\$7,590.50	\$7,590.50
200 Personnel Services – Employee Benefits				
220 Social Security Contributions			574.41	574.41
230 PSERS Retirement Contributions	686.99	2,159.71	(273.47)	2,573.23
240 Tuition Reimbursement	115,006.74	62,779.29		177,786.03
250 Unemployment Compensation			3.95	3.95
260 Workers' Compensation			68.67	68.67
Total Personnel Services – Employee Benefits	\$115,693.73	\$64,939.00	\$373.56	\$181,006.29
300 Purchased Professional and Technical Services				
322 Professional Educational Services – lus	7,980.00	6,270.00	92,360.00	106,610.00
360 Employee Training and Development Services	49,172.81	39,168.40	299,139.87	387,481.08
Total Purchased Professional and Technical Services	\$57,152.81	\$45,438.40	\$391,499.87	\$494,091.08
Total 2270 Instructional Staff Professional Development Services	\$172,846.54	\$110,377.40	\$399,463.93	\$682,687.87

LEA : 124151902 Coatesville Area SD

Printed 12/17/2025 9:41:27 AM

General Fund (10)

	<u>Elementary</u>	<u>Secondary</u>	<u>Federal</u>	<u>Total</u>
2300 Support Services – Administration				
100 Personnel Services – Salaries				
100 Personnel Services – Salaries	1,488,498.93	1,646,315.18		3,739,101.84
Total Personnel Services – Salaries	\$1,488,498.93	\$1,646,315.18		\$3,739,101.84
200 Personnel Services – Employee Benefits				
210 Group Insurance – Contracted Provider	6,282.86	7,215.76		15,963.77
220 Social Security Contributions	110,921.19	120,586.91		271,048.60
230 PSERS Retirement Contributions	490,391.34	540,010.64		1,223,142.90
250 Unemployment Compensation	172.56	128.15		357.31
260 Workers' Compensation	4,694.37	5,155.99		11,796.83
270 Group Insurance – Self-Insurance	263,209.19	291,063.45		649,996.36
292 Health Savings Accounts	26,963.45	29,800.00		67,123.45
Total Personnel Services – Employee Benefits	\$902,634.96	\$993,960.90		\$2,239,429.22
300 Purchased Professional and Technical Services				
330 Other Professional Services				633,170.03
390 Other Purchased Professional and Technical Services	69,258.75			146,947.75
Total Purchased Professional and Technical Services	\$69,258.75			\$780,117.78
400 Purchased Property Services				
440 Rentals	66,164.12	54,391.22		129,948.34
Total Purchased Property Services	\$66,164.12	\$54,391.22		\$129,948.34
500 Other Purchased Services				
520 Insurance – General				110,341.00
530 Communications				16,667.78
549 Other Advertising/Public Relations				43,672.72
550 Printing and Binding				7,934.30
580 Travel	96.21	1,531.72		4,066.52
Total Other Purchased Services	\$96.21	\$1,531.72		\$182,682.32
600 Supplies				
610 General Supplies	975.66	5,529.44		18,405.68
630 Food	777.29	1,466.66		9,014.00
640 Books and Periodicals				28.00
650 Supplies & Fees – Technology Related	126.18	829.94		25,045.52
Total Supplies	\$1,879.13	\$7,826.04		\$52,493.20
800 Other Objects				
810 Dues and Fees	990.00	3,865.00	50.00	246,739.53
820 Claims and Judgments Against the LEA				348,057.59
Total Other Objects	\$990.00	\$3,865.00	\$50.00	\$594,797.12
Total 2300 Support Services – Administration	\$2,529,522.10	\$2,707,890.06	\$50.00	\$7,718,569.82

General Fund (10)

	<u>Elementary</u>	<u>Secondary</u>	<u>Federal</u>	<u>Total</u>
2310 Board Services				
100 Personnel Services – Salaries				
100 Personnel Services – Salaries				1,157.55
Total Personnel Services – Salaries				\$1,157.55
200 Personnel Services – Employee Benefits				
220 Social Security Contributions				87.38
230 PSERS Retirement Contributions				392.40
260 Workers' Compensation				10.45
Total Personnel Services – Employee Benefits				\$490.23
300 Purchased Professional and Technical Services				
330 Other Professional Services				3,054.00
Total Purchased Professional and Technical Services				\$3,054.00
500 Other Purchased Services				
520 Insurance – General				110,341.00
549 Other Advertising/Public Relations				43,672.72
580 Travel				1,587.50
Total Other Purchased Services				\$155,601.22
600 Supplies				
610 General Supplies				172.38
630 Food				935.55
650 Supplies & Fees – Technology Related				24,089.40
Total Supplies				\$25,197.33
800 Other Objects				
810 Dues and Fees				19,821.80
820 Claims and Judgments Against the LEA				348,057.59
Total Other Objects				\$367,879.39
Total 2310 Board Services				\$553,379.72

General Fund (10)

	<u>Elementary</u>	<u>Secondary</u>	<u>Federal</u>	<u>Total</u>
2330 Tax Assessment and Collection Services				
100 Personnel Services – Salaries				
100 Personnel Services – Salaries				1,532.00
Total Personnel Services – Salaries				\$1,532.00
200 Personnel Services – Employee Benefits				
220 Social Security Contributions				117.19
250 Unemployment Compensation				1.54
260 Workers' Compensation				13.85
Total Personnel Services – Employee Benefits				\$132.58
300 Purchased Professional and Technical Services				
330 Other Professional Services				62,435.61
Total Purchased Professional and Technical Services				\$62,435.61
500 Other Purchased Services				
530 Communications				16,667.78
Total Other Purchased Services				\$16,667.78
800 Other Objects				
810 Dues and Fees				210,949.07
Total Other Objects				\$210,949.07
Total 2330 Tax Assessment and Collection Services				\$291,717.04

LEA : 124151902 Coatesville Area SD

Printed 12/17/2025 9:41:27 AM

General Fund (10)

2350 Legal and Accounting Services

Elementary

Secondary

Federal

Total

300 Purchased Professional and Technical Services

330 Other Professional Services

567,680.42

Total Purchased Professional and Technical Services

\$567,680.42

Total 2350 Legal and Accounting Services

\$567,680.42

General Fund (10)

	<u>Elementary</u>	<u>Secondary</u>	<u>Federal</u>	<u>Total</u>
2380 Office of the Principal Services				
100 Personnel Services – Salaries				
100 Personnel Services – Salaries	1,488,498.93	1,646,315.18		3,134,814.11
Total Personnel Services – Salaries	\$1,488,498.93	\$1,646,315.18		\$3,134,814.11
200 Personnel Services – Employee Benefits				
210 Group Insurance – Contracted Provider	6,282.86	7,215.76		13,498.62
220 Social Security Contributions	110,921.19	120,586.91		231,508.10
230 PSERS Retirement Contributions	490,391.34	540,010.64		1,030,401.98
250 Unemployment Compensation	172.56	128.15		300.71
260 Workers' Compensation	4,694.37	5,155.99		9,850.36
270 Group Insurance – Self-Insurance	263,209.19	291,063.45		554,272.64
292 Health Savings Accounts	26,963.45	29,800.00		56,763.45
Total Personnel Services – Employee Benefits	\$902,634.96	\$993,960.90		\$1,896,595.86
300 Purchased Professional and Technical Services				
390 Other Purchased Professional and Technical Services	69,258.75			69,258.75
Total Purchased Professional and Technical Services	\$69,258.75			\$69,258.75
400 Purchased Property Services				
440 Rentals	66,164.12	54,391.22		120,555.34
Total Purchased Property Services	\$66,164.12	\$54,391.22		\$120,555.34
500 Other Purchased Services				
580 Travel	96.21	1,531.72		1,627.93
Total Other Purchased Services	\$96.21	\$1,531.72		\$1,627.93
600 Supplies				
610 General Supplies	975.66	5,529.44		6,505.10
630 Food	777.29	1,466.66		2,243.95
650 Supplies & Fees – Technology Related	126.18	829.94		956.12
Total Supplies	\$1,879.13	\$7,826.04		\$9,705.17
800 Other Objects				
810 Dues and Fees	990.00	3,865.00		4,855.00
Total Other Objects	\$990.00	\$3,865.00		\$4,855.00
Total 2380 Office of the Principal Services	\$2,529,522.10	\$2,707,890.06		\$5,237,412.16

LEA : 124151902 Coatesville Area SD

Printed 12/17/2025 9:41:27 AM

General Fund (10)

	<u>Elementary</u>	<u>Secondary</u>	<u>Federal</u>	<u>Total</u>
2390 Other Administration Services				
300 <u>Purchased Professional and Technical Services</u>				
390 Other Purchased Professional and Technical Services				17,779.00
Total Purchased Professional and Technical Services				\$17,779.00
400 <u>Purchased Property Services</u>				
440 Rentals				9,393.00
Total Purchased Property Services				\$9,393.00
500 <u>Other Purchased Services</u>				
550 Printing and Binding				7,934.30
Total Other Purchased Services				\$7,934.30
600 <u>Supplies</u>				
610 General Supplies				8,909.45
630 Food				1,784.75
Total Supplies				\$10,694.20
800 <u>Other Objects</u>				
810 Dues and Fees			50.00	2,957.66
Total Other Objects			\$50.00	\$2,957.66
Total 2390 Other Administration Services			\$50.00	\$48,758.16

General Fund (10)

	<u>Elementary</u>	<u>Secondary</u>	<u>Federal</u>	<u>Total</u>
2400 Support Services – Pupil Health				
100 Personnel Services – Salaries				
100 Personnel Services – Salaries				562,365.82
Total Personnel Services – Salaries				\$562,365.82
200 Personnel Services – Employee Benefits				
210 Group Insurance – Contracted Provider				1,599.83
220 Social Security Contributions				41,891.74
230 PSERS Retirement Contributions				184,919.19
250 Unemployment Compensation				84.21
260 Workers' Compensation				1,774.05
270 Group Insurance – Self-Insurance				83,401.16
292 Health Savings Accounts				800.00
Total Personnel Services – Employee Benefits				\$314,470.18
300 Purchased Professional and Technical Services				
330 Other Professional Services				39,907.85
Total Purchased Professional and Technical Services				\$39,907.85
400 Purchased Property Services				
440 Rentals				190.00
Total Purchased Property Services				\$190.00
600 Supplies				
610 General Supplies				19,049.51
Total Supplies				\$19,049.51
Total 2400 Support Services – Pupil Health				\$935,983.36

General Fund (10)

2420 Medical Services

	<u>Elementary</u>	<u>Secondary</u>	<u>Federal</u>	<u>Total</u>
100 Personnel Services – Salaries				
100 Personnel Services – Salaries				562,365.82
Total Personnel Services – Salaries				\$562,365.82
200 Personnel Services – Employee Benefits				
210 Group Insurance – Contracted Provider				1,599.83
220 Social Security Contributions				41,891.74
230 PSERS Retirement Contributions				184,919.19
250 Unemployment Compensation				84.21
260 Workers' Compensation				1,774.05
270 Group Insurance – Self-Insurance				83,401.16
292 Health Savings Accounts				800.00
Total Personnel Services – Employee Benefits				\$314,470.18
300 Purchased Professional and Technical Services				
330 Other Professional Services				39,907.85
Total Purchased Professional and Technical Services				\$39,907.85
400 Purchased Property Services				
440 Rentals				190.00
Total Purchased Property Services				\$190.00
600 Supplies				
610 General Supplies				19,049.51
Total Supplies				\$19,049.51
Total 2420 Medical Services				\$935,983.36

General Fund (10)

	<u>Elementary</u>	<u>Secondary</u>	<u>Federal</u>	<u>Total</u>
2500 Support Services – Business				
100 Personnel Services – Salaries				
100 Personnel Services – Salaries				720,819.25
Total Personnel Services – Salaries				\$720,819.25
200 Personnel Services – Employee Benefits				
210 Group Insurance – Contracted Provider				3,230.34
220 Social Security Contributions				54,174.78
230 PSERS Retirement Contributions				241,685.27
250 Unemployment Compensation				66.32
260 Workers' Compensation				2,311.12
270 Group Insurance – Self-Insurance				95,998.26
292 Health Savings Accounts				15,000.00
Total Personnel Services – Employee Benefits				\$412,466.09
300 Purchased Professional and Technical Services				
330 Other Professional Services				53,985.92
Total Purchased Professional and Technical Services				\$53,985.92
400 Purchased Property Services				
440 Rentals				2,870.39
Total Purchased Property Services				\$2,870.39
500 Other Purchased Services				
530 Communications				42,025.32
580 Travel				610.52
Total Other Purchased Services				\$42,635.84
600 Supplies				
610 General Supplies				3,584.29
630 Food				88.50
650 Supplies & Fees – Technology Related				28,487.12
Total Supplies				\$32,159.91
800 Other Objects				
810 Dues and Fees				14,162.06
Total Other Objects				\$14,162.06
Total 2500 Support Services – Business				\$1,279,099.46

General Fund (10)

2510 Fiscal Services

Elementary Secondary Federal Total

100	<u>Personnel Services – Salaries</u>			
	100 Personnel Services – Salaries			649,742.25
Total Personnel Services – Salaries				\$649,742.25
200	<u>Personnel Services – Employee Benefits</u>			
	210 Group Insurance – Contracted Provider			2,869.61
	220 Social Security Contributions			48,765.26
	230 PSERS Retirement Contributions			217,590.12
	250 Unemployment Compensation			56.02
	260 Workers' Compensation			2,082.37
	270 Group Insurance – Self-Insurance			75,629.80
	292 Health Savings Accounts			12,000.00
Total Personnel Services – Employee Benefits				\$358,993.18
300	<u>Purchased Professional and Technical Services</u>			
	330 Other Professional Services			53,985.92
Total Purchased Professional and Technical Services				\$53,985.92
400	<u>Purchased Property Services</u>			
	440 Rentals			2,870.39
Total Purchased Property Services				\$2,870.39
500	<u>Other Purchased Services</u>			
	530 Communications			42,025.32
	580 Travel			610.52
Total Other Purchased Services				\$42,635.84
600	<u>Supplies</u>			
	610 General Supplies			3,426.34
	630 Food			88.50
	650 Supplies & Fees – Technology Related			28,487.12
Total Supplies				\$32,001.96
800	<u>Other Objects</u>			
	810 Dues and Fees			13,985.39
Total Other Objects				\$13,985.39
Total 2510 Fiscal Services				\$1,154,214.93

General Fund (10)

	<u>Elementary</u>	<u>Secondary</u>	<u>Federal</u>	<u>Total</u>
2511 Supervision of Fiscal Services - Head of Component				
100 <u>Personnel Services – Salaries</u>				
100 Personnel Services – Salaries				231,777.51
Total Personnel Services – Salaries				\$231,777.51
200 <u>Personnel Services – Employee Benefits</u>				
210 Group Insurance – Contracted Provider				992.91
220 Social Security Contributions				17,473.28
230 PSERS Retirement Contributions				78,572.65
250 Unemployment Compensation				15.23
260 Workers' Compensation				750.64
270 Group Insurance – Self-Insurance				20,427.16
292 Health Savings Accounts				4,500.00
Total Personnel Services – Employee Benefits				\$122,731.87
400 <u>Purchased Property Services</u>				
440 Rentals				2,870.39
Total Purchased Property Services				\$2,870.39
500 <u>Other Purchased Services</u>				
580 Travel				498.94
Total Other Purchased Services				\$498.94
600 <u>Supplies</u>				
610 General Supplies				499.82
630 Food				88.50
650 Supplies & Fees – Technology Related				28,487.12
Total Supplies				\$29,075.44
800 <u>Other Objects</u>				
810 Dues and Fees				2,413.94
Total Other Objects				\$2,413.94
Total 2511 Supervision of Fiscal Services - Head of Component				\$389,368.09

General Fund (10)

2514 Payroll Services

Elementary Secondary Federal Total

100	<u>Personnel Services – Salaries</u>				
	100 Personnel Services – Salaries				74,636.69
Total Personnel Services – Salaries					\$74,636.69
200	<u>Personnel Services – Employee Benefits</u>				
	210 Group Insurance – Contracted Provider				374.77
	220 Social Security Contributions				5,455.24
	230 PSERS Retirement Contributions				25,028.12
	250 Unemployment Compensation				10.31
	260 Workers' Compensation				227.85
	270 Group Insurance – Self-Insurance				9,865.31
	292 Health Savings Accounts				1,500.00
Total Personnel Services – Employee Benefits					\$42,461.60
600	<u>Supplies</u>				
	610 General Supplies				150.07
Total Supplies					\$150.07
800	<u>Other Objects</u>				
	810 Dues and Fees				16.67
Total Other Objects					\$16.67
Total 2514 Payroll Services					\$117,265.03

LEA : 124151902 Coatesville Area SD

Printed 12/17/2025 9:41:27 AM

General Fund (10)

2519 Other Fiscal Services

Elementary

Secondary

Federal

Total

600 Supplies

610 General Supplies

1,560.95

Total Supplies

\$1,560.95

Total 2519 Other Fiscal Services

\$1,560.95

General Fund (10)

2520 Purchasing Services

Elementary

Secondary

Federal

Total

100 Personnel Services – Salaries

100 Personnel Services – Salaries

71,077.00

Total Personnel Services – Salaries

\$71,077.00

200 Personnel Services – Employee Benefits

210 Group Insurance – Contracted Provider

360.73

220 Social Security Contributions

5,409.52

230 PSERS Retirement Contributions

24,095.15

250 Unemployment Compensation

10.30

260 Workers' Compensation

228.75

270 Group Insurance – Self-Insurance

20,368.46

292 Health Savings Accounts

3,000.00

Total Personnel Services – Employee Benefits

\$53,472.91

600 Supplies

610 General Supplies

157.95

Total Supplies

\$157.95

800 Other Objects

810 Dues and Fees

176.67

Total Other Objects

\$176.67

Total 2520 Purchasing Services

\$124,884.53

General Fund (10)

2600 Operation and Maintenance of Plant Services

Elementary Secondary Federal Total

100 Personnel Services – Salaries
 100 Personnel Services – Salaries 2,735,801.40

Total Personnel Services – Salaries \$2,735,801.40

200 Personnel Services – Employee Benefits

210 Group Insurance – Contracted Provider 9,506.33
 220 Social Security Contributions 204,377.79
 230 PSERS Retirement Contributions 914,303.18
 250 Unemployment Compensation 404.67
 260 Workers' Compensation 8,829.50
 270 Group Insurance – Self-Insurance 697,450.91
 292 Health Savings Accounts 21,276.36

Total Personnel Services – Employee Benefits \$1,856,148.74

300 Purchased Professional and Technical Services

330 Other Professional Services 49,151.78
 350 Security / Safety Services 21,139.17
 390 Other Purchased Professional and Technical Services 101,776.07

Total Purchased Professional and Technical Services \$172,067.02

400 Purchased Property Services

410 Cleaning Services 1,653,080.10
 420 Utility Services 434,802.12
 430 Repairs and Maintenance Services 1,141,215.78
 440 Rentals 37,809.12
 460 Extermination Services 14,051.00
 490 Other Purchased Property Services 1,582.04

Total Purchased Property Services \$3,282,540.16

500 Other Purchased Services

522 Automotive Liability Insurance 21,464.00
 523 General Property and Liability Insurance 339,330.00
 529 Other Insurance 295,830.00
 580 Travel 745.00

Total Other Purchased Services \$657,369.00

600 Supplies

610 General Supplies 312,932.01 280,309.62 406,290.24 999,531.87
 620 Energy 1,632,429.30
 650 Supplies & Fees – Technology Related 65,768.61

Total Supplies \$312,932.01 \$280,309.62 \$406,290.24 \$2,697,729.78

700 Property

752 Capital Equipment – Original and Additional 104,003.15 104,003.15
 762 Capitalized Equipment - Replacement 55,112.81 70,336.88

Total Property \$159,115.96 \$174,340.03

800 Other Objects

LEA : 124151902 Coatesville Area SD

Printed 12/17/2025 9:41:27 AM

General Fund (10)

2600 Operation and Maintenance of Plant Services

Elementary

Secondary

Federal

Total

800 Other Objects

810 Dues and Fees

23,731.63

Total Other Objects

\$23,731.63

Total 2600 Operation and Maintenance of Plant Services

\$312,932.01

\$280,309.62

\$565,406.20

\$11,599,727.76

General Fund (10)

	<u>Elementary</u>	<u>Secondary</u>	<u>Federal</u>	<u>Total</u>
2610 Supervision of Operation and Maintenance of Plant Services				
100 Personnel Services – Salaries				
100 Personnel Services – Salaries				295,478.89
Total Personnel Services – Salaries				\$295,478.89
200 Personnel Services – Employee Benefits				
210 Group Insurance – Contracted Provider				1,383.26
220 Social Security Contributions				22,408.01
230 PSERS Retirement Contributions				99,846.81
250 Unemployment Compensation				25.55
260 Workers' Compensation				964.64
270 Group Insurance – Self-Insurance				66,513.40
292 Health Savings Accounts				7,500.00
Total Personnel Services – Employee Benefits				\$198,641.67
600 Supplies				
610 General Supplies	139.69	109.76		249.45
Total Supplies	\$139.69	\$109.76		\$249.45
Total 2610 Supervision of Operation and Maintenance of Plant Services	\$139.69	\$109.76		\$494,370.01

General Fund (10)

	<u>Elementary</u>	<u>Secondary</u>	<u>Federal</u>	<u>Total</u>
2611 Supervision of Operation and Maintenance of Plant Services – Head of Component				
100 Personnel Services – Salaries				
100 Personnel Services – Salaries				295,478.89
Total Personnel Services – Salaries				\$295,478.89
200 Personnel Services – Employee Benefits				
210 Group Insurance – Contracted Provider				1,383.26
220 Social Security Contributions				22,408.01
230 PSERS Retirement Contributions				99,846.81
250 Unemployment Compensation				25.55
260 Workers' Compensation				964.64
270 Group Insurance – Self-Insurance				66,513.40
292 Health Savings Accounts				7,500.00
Total Personnel Services – Employee Benefits				\$198,641.67
600 Supplies				
610 General Supplies	139.69	109.76		249.45
Total Supplies	\$139.69	\$109.76		\$249.45
Total 2611 Supervision of Operation and Maintenance of Plant Services – Head of Component	\$139.69	\$109.76		\$494,370.01

General Fund (10)

	<u>Elementary</u>	<u>Secondary</u>	<u>Federal</u>	<u>Total</u>
2620 Operation of Buildings Services				
100 Personnel Services – Salaries				
100 Personnel Services – Salaries				1,831,584.87
Total Personnel Services – Salaries				\$1,831,584.87
200 Personnel Services – Employee Benefits				
210 Group Insurance – Contracted Provider				5,785.20
220 Social Security Contributions				136,042.60
230 PSERS Retirement Contributions				614,832.40
250 Unemployment Compensation				269.62
260 Workers' Compensation				5,903.95
270 Group Insurance – Self-Insurance				517,693.43
Total Personnel Services – Employee Benefits				\$1,280,527.20
300 Purchased Professional and Technical Services				
390 Other Purchased Professional and Technical Services				104,651.07
Total Purchased Professional and Technical Services				\$104,651.07
400 Purchased Property Services				
410 Cleaning Services				1,265,624.37
420 Utility Services				434,802.12
430 Repairs and Maintenance Services				1,138,773.47
440 Rentals				34,938.73
460 Extermination Services				14,051.00
490 Other Purchased Property Services				1,582.04
Total Purchased Property Services				\$2,889,771.73
500 Other Purchased Services				
522 Automotive Liability Insurance				21,464.00
523 General Property and Liability Insurance				339,330.00
529 Other Insurance				295,830.00
580 Travel				295.00
Total Other Purchased Services				\$656,919.00
600 Supplies				
610 General Supplies	171,999.05	153,161.49		325,160.54
620 Energy				1,632,429.30
650 Supplies & Fees – Technology Related				9,979.69
Total Supplies	\$171,999.05	\$153,161.49		\$1,967,569.53
700 Property				
752 Capital Equipment – Original and Additional			104,003.15	104,003.15
762 Capitalized Equipment - Replacement			55,112.81	70,336.88
Total Property			\$159,115.96	\$174,340.03
800 Other Objects				
810 Dues and Fees				23,681.63
Total Other Objects				\$23,681.63
Total 2620 Operation of Buildings Services	\$171,999.05	\$153,161.49	\$159,115.96	\$8,929,045.06

General Fund (10)

	<u>Elementary</u>	<u>Secondary</u>	<u>Federal</u>	<u>Total</u>
2630 Care and Upkeep of Grounds Services				
100 Personnel Services – Salaries				
100 Personnel Services – Salaries				154,669.40
Total Personnel Services – Salaries				\$154,669.40
200 Personnel Services – Employee Benefits				
210 Group Insurance – Contracted Provider				413.20
220 Social Security Contributions				11,439.35
230 PSERS Retirement Contributions				50,988.27
250 Unemployment Compensation				15.24
260 Workers' Compensation				493.21
270 Group Insurance – Self-Insurance				48,941.08
Total Personnel Services – Employee Benefits				\$112,290.35
400 Purchased Property Services				
410 Cleaning Services				387,455.73
430 Repairs and Maintenance Services				1,922.31
Total Purchased Property Services				\$389,378.04
600 Supplies				
610 General Supplies	257.97	202.70		460.67
Total Supplies	\$257.97	\$202.70		\$460.67
Total 2630 Care and Upkeep of Grounds Services	\$257.97	\$202.70		\$656,798.46

General Fund (10)

2660 Safety and Security Services

	<u>Elementary</u>	<u>Secondary</u>	<u>Federal</u>	<u>Total</u>
100 Personnel Services – Salaries				
100 Personnel Services – Salaries				454,068.24
Total Personnel Services – Salaries				\$454,068.24
200 Personnel Services – Employee Benefits				
210 Group Insurance – Contracted Provider				1,924.67
220 Social Security Contributions				34,487.83
230 PSERS Retirement Contributions				148,635.70
250 Unemployment Compensation				94.26
260 Workers' Compensation				1,467.70
270 Group Insurance – Self-Insurance				64,303.00
292 Health Savings Accounts				13,776.36
Total Personnel Services – Employee Benefits				\$264,689.52
300 Purchased Professional and Technical Services				
330 Other Professional Services				49,151.78
350 Security / Safety Services				21,139.17
390 Other Purchased Professional and Technical Services				(2,875.00)
Total Purchased Professional and Technical Services				\$67,415.95
400 Purchased Property Services				
430 Repairs and Maintenance Services				520.00
440 Rentals				2,870.39
Total Purchased Property Services				\$3,390.39
500 Other Purchased Services				
580 Travel				450.00
Total Other Purchased Services				\$450.00
600 Supplies				
610 General Supplies	140,535.30	126,835.67	406,290.24	673,661.21
650 Supplies & Fees – Technology Related				55,788.92
Total Supplies	\$140,535.30	\$126,835.67	\$406,290.24	\$729,450.13
800 Other Objects				
810 Dues and Fees				50.00
Total Other Objects				\$50.00
Total 2660 Safety and Security Services	\$140,535.30	\$126,835.67	\$406,290.24	\$1,519,514.23

General Fund (10)

2700 Student Transportation Services

Elementary Secondary Federal Total

100	<u>Personnel Services – Salaries</u>			
	100 Personnel Services – Salaries			69,476.28
Total Personnel Services – Salaries				\$69,476.28
200	<u>Personnel Services – Employee Benefits</u>			
	210 Group Insurance – Contracted Provider			342.91
	220 Social Security Contributions			5,048.60
	230 PSERS Retirement Contributions			23,004.54
	250 Unemployment Compensation			10.30
	260 Workers' Compensation			225.49
	270 Group Insurance – Self-Insurance			21,090.58
	292 Health Savings Accounts			3,000.00
Total Personnel Services – Employee Benefits				\$52,722.42
300	<u>Purchased Professional and Technical Services</u>			
	330 Other Professional Services			230,863.23
	390 Other Purchased Professional and Technical Services			14,540.03
Total Purchased Professional and Technical Services				\$245,403.26
400	<u>Purchased Property Services</u>			
	440 Rentals			5,740.80
Total Purchased Property Services				\$5,740.80
500	<u>Other Purchased Services</u>			
	513 Contracted Carriers		423,890.67	13,005,868.23
	516 Student Transportation Services From the IU			74,638.41
Total Other Purchased Services			\$423,890.67	\$13,080,506.64
600	<u>Supplies</u>			
	610 General Supplies			11,059.53
Total Supplies				\$11,059.53
800	<u>Other Objects</u>			
	810 Dues and Fees			176.67
Total Other Objects				\$176.67
Total 2700 Student Transportation Services			\$423,890.67	\$13,465,085.60

General Fund (10)

2710 Supervision of Student Transportation Services

Elementary Secondary Federal Total

100	<u>Personnel Services – Salaries</u>				
	100 Personnel Services – Salaries				69,476.28
Total Personnel Services – Salaries					\$69,476.28
200	<u>Personnel Services – Employee Benefits</u>				
	210 Group Insurance – Contracted Provider				342.91
	220 Social Security Contributions				5,048.60
	230 PSERS Retirement Contributions				23,004.54
	250 Unemployment Compensation				10.30
	260 Workers' Compensation				225.49
	270 Group Insurance – Self-Insurance				21,090.58
	292 Health Savings Accounts				3,000.00
Total Personnel Services – Employee Benefits					\$52,722.42
300	<u>Purchased Professional and Technical Services</u>				
	330 Other Professional Services				230,863.23
	390 Other Purchased Professional and Technical Services				14,540.03
Total Purchased Professional and Technical Services					\$245,403.26
400	<u>Purchased Property Services</u>				
	440 Rentals				5,740.80
Total Purchased Property Services					\$5,740.80
600	<u>Supplies</u>				
	610 General Supplies				11,059.53
Total Supplies					\$11,059.53
800	<u>Other Objects</u>				
	810 Dues and Fees				176.67
Total Other Objects					\$176.67
Total 2710 Supervision of Student Transportation Services					\$384,578.96

General Fund (10)

2711 Supervision of Student Transportation Services – Head of Component

	<u>Elementary</u>	<u>Secondary</u>	<u>Federal</u>	<u>Total</u>
100 Personnel Services – Salaries				
100 Personnel Services – Salaries				69,476.28
Total Personnel Services – Salaries				\$69,476.28
200 Personnel Services – Employee Benefits				
210 Group Insurance – Contracted Provider				342.91
220 Social Security Contributions				5,048.60
230 PSERS Retirement Contributions				23,004.54
250 Unemployment Compensation				10.30
260 Workers' Compensation				225.49
270 Group Insurance – Self-Insurance				21,090.58
292 Health Savings Accounts				3,000.00
Total Personnel Services – Employee Benefits				\$52,722.42
300 Purchased Professional and Technical Services				
330 Other Professional Services				230,863.23
390 Other Purchased Professional and Technical Services				14,540.03
Total Purchased Professional and Technical Services				\$245,403.26
400 Purchased Property Services				
440 Rentals				5,740.80
Total Purchased Property Services				\$5,740.80
600 Supplies				
610 General Supplies				11,059.53
Total Supplies				\$11,059.53
800 Other Objects				
810 Dues and Fees				176.67
Total Other Objects				\$176.67
Total 2711 Supervision of Student Transportation Services – Head of Component				\$384,578.96

LEA : 124151902 Coatesville Area SD

Printed 12/17/2025 9:41:27 AM

General Fund (10)

2720 Vehicle Operation Services

500 Other Purchased Services

513 Contracted Carriers

516 Student Transportation Services From the IU

Total Other Purchased Services

Total 2720 Vehicle Operation Services

Elementary

Secondary

Federal

Total

423,890.67

10,713,030.49

74,638.41

\$423,890.67

\$10,787,668.90

\$423,890.67

\$10,787,668.90

LEA : 124151902 Coatesville Area SD

Printed 12/17/2025 9:41:27 AM

General Fund (10)

2740 Vehicle Servicing and Maintenance Services

Elementary

Secondary

Federal

Total

500 Other Purchased Services

513 Contracted Carriers

848,048.14

Total Other Purchased Services

\$848,048.14

Total 2740 Vehicle Servicing and Maintenance Services

\$848,048.14

LEA : 124151902 Coatesville Area SD

Printed 12/17/2025 9:41:27 AM

General Fund (10)

2750 Nonpublic Transportation

Elementary

Secondary

Federal

Total

500 Other Purchased Services

513 Contracted Carriers

1,444,789.60

Total Other Purchased Services

\$1,444,789.60

Total 2750 Nonpublic Transportation

\$1,444,789.60

General Fund (10)

	<u>Elementary</u>	<u>Secondary</u>	<u>Federal</u>	<u>Total</u>
2800 Support Services – Central				
100 Personnel Services – Salaries				
100 Personnel Services – Salaries				439,131.17
Total Personnel Services – Salaries				\$439,131.17
200 Personnel Services – Employee Benefits				
210 Group Insurance – Contracted Provider				2,005.73
220 Social Security Contributions				32,888.93
230 PSERS Retirement Contributions				148,841.38
240 Tuition Reimbursement				(8,547.00)
250 Unemployment Compensation				44.22
260 Workers' Compensation				1,409.40
270 Group Insurance – Self-Insurance				105,927.88
292 Health Savings Accounts				14,423.08
Total Personnel Services – Employee Benefits				\$296,993.62
300 Purchased Professional and Technical Services				
330 Other Professional Services				65,722.76
340 Technical Services				610,036.88
360 Employee Training and Development Services			5,946.00	30,064.68
Total Purchased Professional and Technical Services			\$5,946.00	\$705,824.32
400 Purchased Property Services				
430 Repairs and Maintenance Services				30,074.00
440 Rentals				133,835.29
Total Purchased Property Services				\$163,909.29
500 Other Purchased Services				
530 Communications				233,827.91
580 Travel			1,934.31	4,822.16
Total Other Purchased Services			\$1,934.31	\$238,650.07
600 Supplies				
610 General Supplies				9,686.10
650 Supplies & Fees – Technology Related				476,937.33
Total Supplies				\$486,623.43
700 Property				
752 Capital Equipment – Original and Additional				706,127.28
762 Capitalized Equipment - Replacement				129,236.82
Total Property				\$835,364.10
800 Other Objects				
810 Dues and Fees			19,400.00	40,687.26
Total Other Objects			\$19,400.00	\$40,687.26
Total 2800 Support Services – Central			\$27,280.31	\$3,207,183.26

General Fund (10)

2830 Staff Services

	<u>Elementary</u>	<u>Secondary</u>	<u>Federal</u>	<u>Total</u>
100 Personnel Services – Salaries				
100 Personnel Services – Salaries				439,131.17
Total Personnel Services – Salaries				\$439,131.17
200 Personnel Services – Employee Benefits				
210 Group Insurance – Contracted Provider				2,005.73
220 Social Security Contributions				32,888.93
230 PSERS Retirement Contributions				148,841.38
240 Tuition Reimbursement				(8,547.00)
250 Unemployment Compensation				44.22
260 Workers' Compensation				1,409.40
270 Group Insurance – Self-Insurance				105,927.88
292 Health Savings Accounts				14,423.08
Total Personnel Services – Employee Benefits				\$296,993.62
300 Purchased Professional and Technical Services				
330 Other Professional Services				65,722.76
360 Employee Training and Development Services			5,946.00	30,064.68
Total Purchased Professional and Technical Services			\$5,946.00	\$95,787.44
400 Purchased Property Services				
440 Rentals				5,740.80
Total Purchased Property Services				\$5,740.80
500 Other Purchased Services				
580 Travel			1,934.31	4,822.16
Total Other Purchased Services			\$1,934.31	\$4,822.16
600 Supplies				
610 General Supplies				1,211.23
650 Supplies & Fees – Technology Related				10,687.00
Total Supplies				\$11,898.23
800 Other Objects				
810 Dues and Fees			19,400.00	33,687.26
Total Other Objects			\$19,400.00	\$33,687.26
Total 2830 Staff Services			\$27,280.31	\$888,060.68

General Fund (10)

2832 Recruitment and Placement Services

Elementary

Secondary

Federal

Total

300 Purchased Professional and Technical Services

330 Other Professional Services

65,722.76

Total Purchased Professional and Technical Services

\$65,722.76

400 Purchased Property Services

440 Rentals

5,740.80

Total Purchased Property Services

\$5,740.80

500 Other Purchased Services

580 Travel

2,887.85

Total Other Purchased Services

\$2,887.85

600 Supplies

610 General Supplies

1,211.23

650 Supplies & Fees – Technology Related

10,687.00

Total Supplies

\$11,898.23

800 Other Objects

810 Dues and Fees

14,287.26

Total Other Objects

\$14,287.26

Total 2832 Recruitment and Placement Services

\$100,536.90

General Fund (10)

2833 Staff Accounting Services

100 Personnel Services – Salaries

100 Personnel Services – Salaries

Total Personnel Services – Salaries

200 Personnel Services – Employee Benefits

210 Group Insurance – Contracted Provider

220 Social Security Contributions

230 PSERS Retirement Contributions

250 Unemployment Compensation

260 Workers' Compensation

270 Group Insurance – Self-Insurance

292 Health Savings Accounts

Total Personnel Services – Employee Benefits

Total 2833 Staff Accounting Services

Elementary

Secondary

Federal

Total

439,131.17

\$439,131.17

2,005.73

32,888.93

148,841.38

44.22

1,409.40

105,927.88

14,423.08

\$305,540.62

\$744,671.79

General Fund (10)

	<u>Elementary</u>	<u>Secondary</u>	<u>Federal</u>	<u>Total</u>
2834 Staff Development Services – Non-Instructional, Certified Staff Only				
200 Personnel Services – Employee Benefits				
240 Tuition Reimbursement				(13,632.00)
Total Personnel Services – Employee Benefits				(\$13,632.00)
300 Purchased Professional and Technical Services				
360 Employee Training and Development Services			5,946.00	15,559.12
Total Purchased Professional and Technical Services			\$5,946.00	\$15,559.12
500 Other Purchased Services				
580 Travel			1,934.31	1,934.31
Total Other Purchased Services			\$1,934.31	\$1,934.31
800 Other Objects				
810 Dues and Fees			19,400.00	19,400.00
Total Other Objects			\$19,400.00	\$19,400.00
Total 2834 Staff Development Services – Non-Instructional, Certified Staff Only			\$27,280.31	\$23,261.43

General Fund (10)

	<u>Elementary</u>	<u>Secondary</u>	<u>Federal</u>	<u>Total</u>
2836 Staff Development Services – Non-Instructional, Non-Certified Staff Only				
200 Personnel Services – Employee Benefits				
240 Tuition Reimbursement				5,085.00
Total Personnel Services – Employee Benefits				\$5,085.00
300 Purchased Professional and Technical Services				
360 Employee Training and Development Services				14,505.56
Total Purchased Professional and Technical Services				\$14,505.56
Total 2836 Staff Development Services – Non-Instructional, Non-Certified Staff Only				\$19,590.56

General Fund (10)

2840 Data Processing Services

Elementary

Secondary

Federal

Total

300 Purchased Professional and Technical Services

340 Technical Services

610,036.88

Total Purchased Professional and Technical Services

\$610,036.88

400 Purchased Property Services

430 Repairs and Maintenance Services

30,074.00

440 Rentals

128,094.49

Total Purchased Property Services

\$158,168.49

500 Other Purchased Services

530 Communications

233,827.91

Total Other Purchased Services

\$233,827.91

600 Supplies

610 General Supplies

8,474.87

650 Supplies & Fees – Technology Related

466,250.33

Total Supplies

\$474,725.20

700 Property

752 Capital Equipment – Original and Additional

706,127.28

762 Capitalized Equipment - Replacement

129,236.82

Total Property

\$835,364.10

800 Other Objects

810 Dues and Fees

7,000.00

Total Other Objects

\$7,000.00

Total 2840 Data Processing Services

\$2,319,122.58

General Fund (10)

2900 Other Support Services

Elementary

Secondary

Federal

Total

300 Purchased Professional and Technical Services

390 Other Purchased Professional and Technical Services

34,629.00

Total Purchased Professional and Technical Services

\$34,629.00

500 Other Purchased Services

530 Communications

4,363.30

4,363.30

595 IU Payments By Withholding

46,924.21

Total Other Purchased Services

\$4,363.30

\$51,287.51

Total 2900 Other Support Services

\$4,363.30

\$85,916.51

General Fund (10)

2910 Support Services Not Listed Elsewhere In the 2000 Series

Elementary

Secondary

Federal

Total

300 Purchased Professional and Technical Services

390 Other Purchased Professional and Technical Services

34,629.00

Total Purchased Professional and Technical Services

\$34,629.00

500 Other Purchased Services

530 Communications

4,363.30

4,363.30

595 IU Payments By Withholding

46,924.21

Total Other Purchased Services

\$4,363.30

\$51,287.51

Total 2910 Support Services Not Listed Elsewhere In the 2000 Series

\$4,363.30

\$85,916.51

LEA : 124151902 Coatesville Area SD

Printed 12/17/2025 9:41:46 AM

General Fund (10)

3000 Operation of Non-Instructional Services	<u>Total</u>
100 Personnel Services – Salaries	
100 Personnel Services – Salaries	113,573.95
110 Official / Administrative Salaries	110,749.43
130 Professional – Other	897,757.79
150 Office / Clerical	41,230.06
Total Personnel Services – Salaries	\$1,163,311.23
200 Personnel Services – Employee Benefits	
210 Group Insurance – Contracted Provider	1,225.63
220 Social Security Contributions	87,458.57
230 PSERS Retirement Contributions	372,029.74
250 Unemployment Compensation	350.32
260 Workers' Compensation	3,891.98
270 Group Insurance – Self-Insurance	42,667.73
292 Health Savings Accounts	7,107.69
Total Personnel Services – Employee Benefits	\$514,731.66
300 Purchased Professional and Technical Services	
330 Other Professional Services	152,886.53
390 Other Purchased Professional and Technical Services	3,875.00
Total Purchased Professional and Technical Services	\$156,761.53
400 Purchased Property Services	
430 Repairs and Maintenance Services	19,318.06
440 Rentals	2,870.39
Total Purchased Property Services	\$22,188.45
500 Other Purchased Services	
510 Student Transportation Services	221,024.21
580 Travel	9,085.16
Total Other Purchased Services	\$230,109.37
600 Supplies	
610 General Supplies	188,410.70
630 Food	5,044.72
640 Books and Periodicals	7,948.87
650 Supplies & Fees – Technology Related	6,273.99
Total Supplies	\$207,678.28
700 Property	
762 Capitalized Equipment - Replacement	136,015.00
Total Property	\$136,015.00
800 Other Objects	
810 Dues and Fees	24,561.74
890 Miscellaneous Expenditures	149,336.88
Total Other Objects	\$173,898.62
Total 3000 Operation of Non-Instructional Services	\$2,604,694.14

LEA : 124151902 Coatesville Area SD

Printed 12/17/2025 9:41:46 AM

General Fund (10)

3200 Student Activities

	<u>Elementary</u>	<u>Secondary</u>	<u>Federal</u>	<u>Total</u>
100 Personnel Services – Salaries				
110 Official / Administrative Salaries				110,749.43
130 Professional – Other				897,757.79
150 Office / Clerical				41,230.06
Total Personnel Services – Salaries				\$1,049,737.28
200 Personnel Services – Employee Benefits				
210 Group Insurance – Contracted Provider				718.66
220 Social Security Contributions				79,311.61
230 PSERS Retirement Contributions				334,413.18
250 Unemployment Compensation				272.92
260 Workers’ Compensation				3,380.27
270 Group Insurance – Self-Insurance				9,865.31
292 Health Savings Accounts				1,500.00
Total Personnel Services – Employee Benefits				\$429,461.95
300 Purchased Professional and Technical Services				
330 Other Professional Services				152,886.53
390 Other Purchased Professional and Technical Services				3,150.00
Total Purchased Professional and Technical Services				\$156,036.53
400 Purchased Property Services				
430 Repairs and Maintenance Services				19,318.06
440 Rentals				2,870.39
Total Purchased Property Services				\$22,188.45
500 Other Purchased Services				
510 Student Transportation Services				221,024.21
580 Travel				9,085.16
Total Other Purchased Services				\$230,109.37
600 Supplies				
610 General Supplies			22,425.00	168,567.41
630 Food			434.31	434.31
650 Supplies & Fees – Technology Related				6,273.99
Total Supplies			\$22,859.31	\$175,275.71
700 Property				
762 Capitalized Equipment - Replacement			136,015.00	136,015.00
Total Property			\$136,015.00	\$136,015.00
800 Other Objects				
810 Dues and Fees			761.49	24,561.74
890 Miscellaneous Expenditures				59,320.88
Total Other Objects			\$761.49	\$83,882.62
Total 3200 Student Activities			\$159,635.80	\$2,282,706.91

General Fund (10)

3300 Community Services

100 Personnel Services – Salaries

	<u>Elementary</u>	<u>Secondary</u>	<u>Federal</u>	<u>Total</u>
100 Personnel Services – Salaries			30,443.44	113,573.95

Total Personnel Services – Salaries			\$30,443.44	\$113,573.95
--	--	--	--------------------	---------------------

200 Personnel Services – Employee Benefits

210 Group Insurance – Contracted Provider			174.94	506.97
---	--	--	--------	--------

220 Social Security Contributions			2,051.97	8,146.96
-----------------------------------	--	--	----------	----------

230 PSERS Retirement Contributions			(4,233.16)	37,616.56
------------------------------------	--	--	------------	-----------

250 Unemployment Compensation			55.93	77.40
-------------------------------	--	--	-------	-------

260 Workers' Compensation			251.59	511.71
---------------------------	--	--	--------	--------

270 Group Insurance – Self-Insurance			10,684.05	32,802.42
--------------------------------------	--	--	-----------	-----------

292 Health Savings Accounts			1,107.69	5,607.69
-----------------------------	--	--	----------	----------

Total Personnel Services – Employee Benefits			\$10,093.01	\$85,269.71
---	--	--	--------------------	--------------------

300 Purchased Professional and Technical Services

390 Other Purchased Professional and Technical Services			725.00	725.00
---	--	--	--------	--------

Total Purchased Professional and Technical Services			\$725.00	\$725.00
--	--	--	-----------------	-----------------

600 Supplies

610 General Supplies			18,637.08	19,843.29
----------------------	--	--	-----------	-----------

630 Food			4,610.41	4,610.41
----------	--	--	----------	----------

640 Books and Periodicals			7,948.87	7,948.87
---------------------------	--	--	----------	----------

Total Supplies			\$31,196.36	\$32,402.57
-----------------------	--	--	--------------------	--------------------

800 Other Objects

890 Miscellaneous Expenditures				966.00
--------------------------------	--	--	--	--------

Total Other Objects				\$966.00
----------------------------	--	--	--	-----------------

Total 3300 Community Services			\$72,457.81	\$232,937.23
--------------------------------------	--	--	--------------------	---------------------

LEA : 124151902 Coatesville Area SD

Printed 12/17/2025 9:41:46 AM

General Fund (10)

3400 Scholarships and Awards

Elementary

Secondary

Federal

Total

800 Other Objects

890 Miscellaneous Expenditures

89,050.00

Total Other Objects

\$89,050.00

Total 3400 Scholarships and Awards

\$89,050.00

LEA : 124151902 Coatesville Area SD

Printed 12/17/2025 9:42:12 AM

General Fund (10)

5000 Other Expenditures and Financing Uses

Total

800 Other Objects

830 Interest 6,221,289.00

Total Other Objects \$6,221,289.00

900 Other Uses of Funds

910 Redemption of Principal 12,425,148.90

920 Authority Obligations 1,580,000.00

Total Other Uses of Funds \$14,005,148.90

Total 5000 Other Expenditures and Financing Uses \$20,226,437.90

General Fund (10)

5100 Debt Service / Other Expenditures and Financing Uses	<u>Elementary</u>	<u>Secondary</u>	<u>Federal</u>	<u>Total</u>
800 <u>Other Objects</u>				
830 Interest				6,221,289.00
Total Other Objects				\$6,221,289.00
900 <u>Other Uses of Funds</u>				
910 Redemption of Principal				12,425,148.90
920 Authority Obligations				1,580,000.00
Total Other Uses of Funds				\$14,005,148.90
Total 5100 Debt Service / Other Expenditures and Financing Uses				\$20,226,437.90

General Fund (10)

	<u>Elementary</u>	<u>Secondary</u>	<u>Federal</u>	<u>Total</u>
5110 Debt Service				
800 Other Objects				
830 Interest				6,221,289.00
Total Other Objects				\$6,221,289.00
900 Other Uses of Funds				
910 Redemption of Principal				12,425,148.90
920 Authority Obligations				1,580,000.00
Total Other Uses of Funds				\$14,005,148.90
Total 5110 Debt Service				\$20,226,437.90

LEA : 124151902 Coatesville Area SD

Printed 12/17/2025 9:41:39 AM

Other Capital Projects Fund (39)

2000 Support Services

Total

700 Property

752 Capital Equipment – Original and Additional

289,496.99

Total Property	\$289,496.99
-----------------------	---------------------

800 Other Objects

810 Dues and Fees

1,582,073.04

Total Other Objects	\$1,582,073.04
----------------------------	-----------------------

Total 2000 Support Services	\$1,871,570.03
------------------------------------	-----------------------

LEA : 124151902 Coatesville Area SD

Printed 12/17/2025 9:41:39 AM

Other Capital Projects Fund (39)

2300 Support Services – Administration

Elementary

Secondary

Federal

Total

800 Other Objects

810 Dues and Fees

1,582,073.04

Total Other Objects

\$1,582,073.04

Total 2300 Support Services – Administration

\$1,582,073.04

LEA : 124151902 Coatesville Area SD

Printed 12/17/2025 9:41:39 AM

Other Capital Projects Fund (39)

2390 Other Administration Services

Elementary

Secondary

Federal

Total

800 Other Objects

810 Dues and Fees

1,582,073.04

Total Other Objects

\$1,582,073.04

Total 2390 Other Administration Services

\$1,582,073.04

LEA : 124151902 Coatesville Area SD

Printed 12/17/2025 9:41:39 AM

Other Capital Projects Fund (39)

2600 Operation and Maintenance of Plant Services

Elementary

Secondary

Federal

Total

700 Property

752 Capital Equipment – Original and Additional

289,496.99

Total Property

\$289,496.99

Total 2600 Operation and Maintenance of Plant Services

\$289,496.99

LEA : 124151902 Coatesville Area SD

Printed 12/17/2025 9:41:39 AM

Other Capital Projects Fund (39)

2620 Operation of Buildings Services

Elementary

Secondary

Federal

Total

700 Property

752 Capital Equipment – Original and Additional

179,994.00

Total Property

\$179,994.00

Total 2620 Operation of Buildings Services

\$179,994.00

LEA : 124151902 Coatesville Area SD

Printed 12/17/2025 9:41:39 AM

Other Capital Projects Fund (39)

2660 Safety and Security Services

Elementary

Secondary

Federal

Total

700 Property

752 Capital Equipment – Original and Additional

109,502.99

Total Property

\$109,502.99

Total 2660 Safety and Security Services

\$109,502.99

Other Capital Projects Fund (39)

4000 Facilities Acquisition, Construction and Improvement Services

Total

300 Purchased Professional and Technical Services

330 Other Professional Services 44,298,066.41

Total Purchased Professional and Technical Services \$44,298,066.41

400 Purchased Property Services

430 Repairs and Maintenance Services 1,502,635.48

Total Purchased Property Services \$1,502,635.48

500 Other Purchased Services

520 Insurance – General 1,599,318.00

Total Other Purchased Services \$1,599,318.00

Total 4000 Facilities Acquisition, Construction and Improvement Services \$47,400,019.89

LEA : 124151902 Coatesville Area SD

Printed 12/17/2025 9:42:06 AM

Other Capital Projects Fund (39)

4200 Existing Site Improvement Services

Elementary

Secondary

Federal

Total

300 Purchased Professional and Technical Services

330 Other Professional Services

275.00

Total Purchased Professional and Technical Services

\$275.00

Total 4200 Existing Site Improvement Services

\$275.00

LEA : 124151902 Coatesville Area SD

Printed 12/17/2025 9:42:06 AM

Other Capital Projects Fund (39)

	<u>Elementary</u>	<u>Secondary</u>	<u>Federal</u>	<u>Total</u>
4500 Building Acquisition and Construction Services – Original and Additional				
300 <u>Purchased Professional and Technical Services</u>				
330 Other Professional Services				11,684,904.29
Total Purchased Professional and Technical Services				\$11,684,904.29
500 <u>Other Purchased Services</u>				
520 Insurance – General				1,263,075.00
Total Other Purchased Services				\$1,263,075.00
Total 4500 Building Acquisition and Construction Services – Original and Additional				\$12,947,979.29

LEA : 124151902 Coatesville Area SD

Printed 12/17/2025 9:42:06 AM

Other Capital Projects Fund (39)

	<u>Elementary</u>	<u>Secondary</u>	<u>Federal</u>	<u>Total</u>
4600 Existing Building Improvement Services				
300 <u>Purchased Professional and Technical Services</u>				
330 Other Professional Services				32,612,887.12
Total Purchased Professional and Technical Services				\$32,612,887.12
400 <u>Purchased Property Services</u>				
430 Repairs and Maintenance Services				1,502,635.48
Total Purchased Property Services				\$1,502,635.48
500 <u>Other Purchased Services</u>				
520 Insurance – General				336,243.00
Total Other Purchased Services				\$336,243.00
Total 4600 Existing Building Improvement Services				\$34,451,765.60

LEA : 124151902 Coatesville Area SD

Printed 12/17/2025 9:42:20 AM

Other Capital Projects Fund (39)

5000 Other Expenditures and Financing Uses

Total

800 Other Objects

830 Interest

1,810,000.00

Total Other Objects

\$1,810,000.00

Total 5000 Other Expenditures and Financing Uses

\$1,810,000.00

LEA : 124151902 Coatesville Area SD

Printed 12/17/2025 9:42:20 AM

Other Capital Projects Fund (39)

5100 Debt Service / Other Expenditures and Financing Uses

Elementary

Secondary

Federal

Total

800 Other Objects

830 Interest

1,810,000.00

Total Other Objects

\$1,810,000.00

Total 5100 Debt Service / Other Expenditures and Financing Uses

\$1,810,000.00

LEA : 124151902 Coatesville Area SD

Printed 12/17/2025 9:42:20 AM

Other Capital Projects Fund (39)

	<u>Elementary</u>	<u>Secondary</u>	<u>Federal</u>	<u>Total</u>
5110 Debt Service				
800 <u>Other Objects</u>				
830 Interest				1,810,000.00
Total Other Objects				\$1,810,000.00
Total 5110 Debt Service				\$1,810,000.00

	<u>General Fund(10)</u>	<u>Student Sponsored Activity Fund(21)</u>	<u>Public Purpose Trust(27)</u>	<u>Other Compt Approved (28)</u>	<u>Athletic / Activity(29)</u>
1000 Instruction					
1100 Regular Programs - Elementary / Secondary	87,880,487.62				
1200 Special Programs - Elementary / Secondary	79,829,724.70				
1300 Vocational Education	3,959,692.91				
1400 Other Instructional Programs - Elementary / Secondary	70,588.92				
1500 Nonpublic School Programs	130,646.87				
Total Instruction	\$171,871,141.02				
2000 Support Services					
2100 Support Services - Students	4,386,183.25				
2200 Support Services - Instructional Staff	4,455,284.45				
2300 Support Services - Administration	7,718,569.82				
2400 Support Services - Pupil Health	935,983.36				
2500 Support Services - Business	1,279,099.46				
2600 Operation and Maintenance of Plant Services	11,599,727.76				
2700 Student Transportation Services	13,465,085.60				
2800 Support Services - Central	3,207,183.26				
2900 Other Support Services	85,916.51				
Total Support Services	\$47,133,033.47				
3000 Operation of Non-Instructional Services					
3200 Student Activities	2,282,706.91				
3300 Community Services	232,937.23				
3400 Scholarships and Awards	89,050.00				
Total Operation of Non-Instructional Services	\$2,604,694.14				
4000 Facilities Acquisition, Construction and Improvement Services					
4200 Existing Site Improvement Services					
4500 Building Acquisition and Construction Services - Original and Additional					
4600 Existing Building Improvement Services					
Total Facilities Acquisition, Construction and Improvement Services					
5000 Other Expenditures and Financing Uses					
5100 Debt Service / Other Expenditures and Financing Uses	20,226,437.90				
Total Other Expenditures and Financing Uses	\$20,226,437.90				
TOTAL ACTUAL EXPENDITURES & OTHER FINANCING USES	\$241,835,306.53				

	<u>Capital Reserve (690.1850)(31)</u>	<u>Capital Reserve (1431)(32)</u>	<u>Other Capital Projects Fund(39)</u>	<u>Debt Service(40)</u>	<u>Permanent(90)</u>
1000 Instruction					
1100 Regular Programs - Elementary / Secondary					
1200 Special Programs - Elementary / Secondary					
1300 Vocational Education					
1400 Other Instructional Programs - Elementary / Secondary					
1500 Nonpublic School Programs					
Total Instruction					
2000 Support Services					
2100 Support Services - Students					
2200 Support Services - Instructional Staff					
2300 Support Services - Administration			1,582,073.04		
2400 Support Services - Pupil Health					
2500 Support Services - Business					
2600 Operation and Maintenance of Plant Services			289,496.99		
2700 Student Transportation Services					
2800 Support Services - Central					
2900 Other Support Services					
Total Support Services			\$1,871,570.03		
3000 Operation of Non-Instructional Services					
3200 Student Activities					
3300 Community Services					
3400 Scholarships and Awards					
Total Operation of Non-Instructional Services					
4000 Facilities Acquisition, Construction and Improvement Services					
4200 Existing Site Improvement Services			275.00		
4500 Building Acquisition and Construction Services - Original and Additional			12,947,979.29		
4600 Existing Building Improvement Services			34,451,765.60		
Total Facilities Acquisition, Construction and Improvement Services			\$47,400,019.89		
5000 Other Expenditures and Financing Uses					
5100 Debt Service / Other Expenditures and Financing Uses			1,810,000.00		
Total Other Expenditures and Financing Uses			\$1,810,000.00		
TOTAL ACTUAL EXPENDITURES & OTHER FINANCING USES			\$51,081,589.92		

Total

1000 <u>Instruction</u>	
1100 Regular Programs - Elementary / Secondary	87,880,487.62
1200 Special Programs - Elementary / Secondary	79,829,724.70
1300 Vocational Education	3,959,692.91
1400 Other Instructional Programs - Elementary / Secondary	70,588.92
1500 Nonpublic School Programs	130,646.87
Total Instruction	\$171,871,141.02
2000 <u>Support Services</u>	
2100 Support Services - Students	4,386,183.25
2200 Support Services - Instructional Staff	4,455,284.45
2300 Support Services - Administration	9,300,642.86
2400 Support Services - Pupil Health	935,983.36
2500 Support Services - Business	1,279,099.46
2600 Operation and Maintenance of Plant Services	11,889,224.75
2700 Student Transportation Services	13,465,085.60
2800 Support Services - Central	3,207,183.26
2900 Other Support Services	85,916.51
Total Support Services	\$49,004,603.50
3000 <u>Operation of Non-Instructional Services</u>	
3200 Student Activities	2,282,706.91
3300 Community Services	232,937.23
3400 Scholarships and Awards	89,050.00
Total Operation of Non-Instructional Services	\$2,604,694.14
4000 <u>Facilities Acquisition, Construction and Improvement Services</u>	
4200 Existing Site Improvement Services	275.00
4500 Building Acquisition and Construction Services - Original and Additional	12,947,979.29
4600 Existing Building Improvement Services	34,451,765.60
Total Facilities Acquisition, Construction and Improvement Services	\$47,400,019.89
5000 <u>Other Expenditures and Financing Uses</u>	
5100 Debt Service / Other Expenditures and Financing Uses	22,036,437.90
Total Other Expenditures and Financing Uses	\$22,036,437.90
TOTAL ACTUAL EXPENDITURES & OTHER FINANCING USES	\$292,916,896.45

LEA : 124151902 Coatesville Area SD

Printed 12/17/2025 9:42:44 AM

PSERS Salary Data (Salary Data should relate to the General Fund only)

Amount Description	Amount
Total Salary Base for salaries subject to PSERS withholding	44,876,102.04
Total Federally Funded salaries subject to PSERS withholding	1,543,617.05
	<hr/>

Title I Expenditure Data

Amount Description	Amount
Expenditures Funded with Current Title I Funds	1,351,620.95
Expenditures Funded with Carry over Title I Funds	891,268.97
Total Title I Expenditure Data	<hr/> \$2,242,889.92 <hr/>

Title IV Revenue Data

Amount Description	Amount
Revenue from Title IV-A-1: Student Support and Academic Enrichment Grants	191,681.00
	<hr/>

1 .	<u>Current Special Education Expenditures within Function 1000</u> See list of exclusions in the note below.	38,762,300.47
2 .	<u>Current Special Education Expenditures within Function 2000</u> See list of exclusions in the note below.	14,345,661.92
2A.	<u>Current Special Education Expenditures within Sub-Function 2100</u> This data should also be included in line 2 above. See list of exclusions in the note below.	1,422,782.16
2B.	<u>Current Special Education Expenditures within Sub-Function 2200</u> This data should also be included in line 2 above. See list of exclusions in the note below.	1,376,376.28
2C.	<u>Current Special Education Expenditures within Sub-Function 2700</u> This data should also be included in line 2 above. See list of exclusions in the note below.	3,902,311.07
3.	<u>Current Special Education Expenditures within Sub-Function 3100</u> See list of exclusions in the note below.	
4.	<u>Current Special Education Expenditures within Sub-Function 3200</u> See list of exclusions in the note below.	694,836.29

Note: The Current Special Education Expenditure amounts for each line should be calculated as follows:

- * Include the total expenditures for special education costs from all governmental funds and the food service fund 51 for the function/sub-function requested
- * Exclude data from sub-functions: 1243,1450,1500,1600,1807,2280,2450,2750,2990
- * Exclude data from objects: 322,511,512,516,561,562,564,566,592,593,594,595,596,597,700,830,899

Benefits for Staff Relative to Collective Bargaining Agreements

	OBJECT	COVERED	NOT COVERED	TOTAL
10 General Fund				
	211 Medical Insurance			
	212 Dental Insurance			
	215 Eye Care Insurance			
	216 Prescription Insurance			
	271 Self-Insurance Medical Benefits	8,490,913.85		8,490,913.85
	272 Self-Insurance Dental Benefits	609,842.86		609,842.86
	275 Self-Insurance Eye Care Benefits	83,435.98		83,435.98
	276 Self-Insurance Prescription Benefits			
	FUND TOTAL		\$9,184,192.69	
50 Enterprise Fund				
	211 Medical Insurance			
	212 Dental Insurance			
	215 Eye Care Insurance			
	216 Prescription Insurance			
	271 Self-Insurance Medical Benefits	115,801.26		115,801.26
	272 Self-Insurance Dental Benefits	8,122.87		8,122.87
	275 Self-Insurance Eye Care Benefits	1,141.11		1,141.11
	276 Self-Insurance Prescription Benefits			
	FUND TOTAL		\$125,065.24	
60 Internal Service Fund	No Self Insurance data to report			
	211 Medical Insurance			
	212 Dental Insurance			
	215 Eye Care Insurance			
	216 Prescription Insurance			
	271 Self-Insurance Medical Benefits			
	272 Self-Insurance Dental Benefits			
	275 Self-Insurance Eye Care Benefits			
	276 Self-Insurance Prescription Benefits			
	FUND TOTAL			
Total of All Funds		\$9,309,257.93		\$9,309,257.93

LEA : 124151902 Coatesville Area SD

Printed 12/17/2025 9:42:58 AM

Function	Special Education (Prior Year)	Nonspecial Education (Prior Year)	Total (Prior Year)	Special Education (Current Year)	Nonspecial Education (Current Year)	Total (Current Year)
2120 Guidance Services	610,905.03	2,080,306.56	2,691,211.59	738,422.98	1,537,850.07	2,276,273.05
2140 Psychological Services	136,620.23	465,231.01	601,851.24	190,418.68	652,141.85	842,560.53
2150 Speech Pathology and Audiology Services						
2160 Social Work Services				30,737.89	64,015.16	94,753.05
2260 Instruction and Curriculum Development Services	456,598.97	1,554,850.23	2,011,449.20	628,008.39	1,365,669.04	1,993,677.43
2350 Legal and Accounting Services	288,994.93	560,990.17	849,985.10	184,155.53	383,524.89	567,680.42
2420 Medical Services	223,478.49	761,008.25	984,486.74	303,633.00	632,350.36	935,983.36
2440 Nursing Services	12,715.26	41,392.24	54,107.50			
2700 Student Transportation Services	2,770,710.16	9,435,061.46	12,205,771.62	3,837,549.40	9,627,536.20	13,465,085.60
Total	\$4,500,023.07	\$14,898,839.92	\$19,398,862.99	\$5,912,925.87	\$14,263,087.57	\$20,176,013.44

LEA : 124151902 Coatesville Area SD

Printed 12/17/2025 9:43:04 AM

(PRINCIPAL AMOUNTS ONLY)

GOVERNMENTAL FUNDS/ ACTIVITIES

	Short-Term Borrowing	General Obligation Bonds/Notes	Authority Building Obligations	Leases, Other Right to Use Arrangements	Extended Term Financing Agreements	Other Long Term Debt/Liabilities	OPEB, Comp Abs, Net Pension Liab	Total
1. Debt at Beginning of Fiscal Year		232,752,782.00	6,820,000.00				126,410,015.00	365,982,797.00
2. Additional Debt Incurred During Year		91,285,000.00					1,835,742.00	93,120,742.00
3. Retirements and Repayments		12,425,148.90	1,580,000.00				4,805,000.00	18,810,148.90
4. Debt at End of Fiscal Year		311,612,633.10	5,240,000.00				123,440,757.00	440,293,390.10
5. Accreted Interest at End Of Fiscal Year		9,514,018.90						9,514,018.90
6. Total Debt and Accreted Interest		321,126,652.00	5,240,000.00				123,440,757.00	449,807,409.00
7. Current Portion P&I - Due within 1 year		13,050,000.00	1,660,000.00				2,077,719.00	16,787,719.00
8. Interest Paid during current fiscal year		7,738,650.10	301,500.00					8,040,150.10

(PRINCIPAL AMOUNTS ONLY)

PROPRIETARY FUNDS

	Short-Term Borrowing	General Obligation Bonds/Notes	Authority Building Obligations	Leases, Other Right to Use Arrangements	Extended Term Financing Agreements	Other Long Term Debt/Liabilities	OPEB, Comp Abs, Net Pension Liab	Total
1. Debt at Beginning of Fiscal Year							2,452,021.00	2,452,021.00
2. Additional Debt Incurred During Year							29,968.00	29,968.00
3. Retirements and Repayments							103,592.00	103,592.00
4. Debt at End of Fiscal Year							2,378,397.00	2,378,397.00
5. Accreted Interest at End Of Fiscal Year								
6. Total Debt and Accreted Interest							2,378,397.00	2,378,397.00
7. Current Portion P&I - Due within 1 year								
8. Interest Paid during current fiscal year								

Total Principal and Interest Payments Made by Your School - All Funds

Function	Fund		Principal (910)	Principal (920)	Interest (830)	Total (Principal +Interest)	Misc Other Uses (990)
5110	10	General Fund	12,425,148.90	1,580,000.00	6,221,289.00	20,226,437.90	
5110	20	Special Revenue Funds					
5110	30	Capital Projects Funds			1,810,000.00	1,810,000.00	
5110	40	Debt Service Fund					
5110	90	Permanent Fund					
5120	10	General Fund					
5120	20	Special Revenue Funds					
5120	30	Capital Projects Funds					
5120	40	Debt Service Fund					
5140	10	General Fund					
5140	20	Special Revenue Funds					
5140	30	Capital Projects Funds					
5140	40	Debt Service Fund					
5140	90	Permanent Fund					
Total Debt Payments - Governmental Funds			\$12,425,148.90	\$1,580,000.00	\$8,031,289.00	\$22,036,437.90	

Function	Fund		Principal (910)	Principal (920)	Interest (830)	Total (Principal +Interest)
5110	50	Enterprise Fund				
5110	60	Internal Service Fund				
5120	50	Enterprise Fund				
5120	60	Internal Service Fund				
5140	50	Enterprise Fund				
5140	60	Internal Service Fund				
Total Debt Payments - Proprietary Funds						

LEA : 124151902 Coatesville Area SD

Printed 12/17/2025 9:43:04 AM

Debt Details
Governmental Funds/ Activities

Debt Category	Debt Issue Date (MM/YYYY)	Principal Amounts Only			Debt at End of Fiscal Year	Current Portion Due Within One Year (Principal and Interest)	Interest Paid During Fiscal Year
		Debt at Beginning of Fiscal Year	Additions	Reductions / Repayments			
General Obligation Bonds/Notes – CIB	05/2025		91,285,000.00		91,285,000.00		
General Obligation Bonds/Notes – CIB	10/2023	86,355,000.00			86,355,000.00	5,000.00	4,260,625.00
General Obligation Bonds/Notes – CIB	11/2020	57,468,000.00		719,000.00	56,749,000.00	740,000.00	1,698,407.00
General Obligation Bonds/Notes – CIB	07/2019	22,466,000.00		178,000.00	22,288,000.00	185,000.00	883,892.00
General Obligation Bonds/Notes – CIB	03/2017	23,640,000.00		11,525,000.00	12,115,000.00	12,115,000.00	893,875.00
General Obligation Bonds/Notes – CAB	11/2020	21,050,075.00			21,050,075.00		
General Obligation Bonds/Notes – CAB	11/2020	6,432,770.00			6,432,770.00		
General Obligation Bonds/Notes – CAB	11/2020	3,005,755.00			3,005,755.00		
General Obligation Bonds/Notes – CAB	11/2020	12,335,182.00		3,148.90	12,332,033.10	5,000.00	1,851.10
Authority Building Obligations – CIB	06/2018	6,820,000.00		1,580,000.00	5,240,000.00	1,660,000.00	301,500.00
Compensated Absences		2,033,586.00	1,714,969.00		3,748,555.00	2,077,719.00	
Other Post-Employment Benefits (OPEB)		8,436,429.00	120,773.00		8,557,202.00		
Net Pension Liability		115,940,000.00		4,805,000.00	111,135,000.00		
Totals for Debt Entered:		\$365,982,797.00	\$93,120,742.00	\$18,810,148.90	\$440,293,390.10	\$16,787,719.00	\$8,040,150.10

Bond Details
Proprietary Funds

Debt Category	Debt Issue Date (MM/YYYY)	Principal Amounts Only			Debt at End of Fiscal Year	Current Portion Due Within One Year (Principal and Interest)	Interest Paid During Fiscal Year
		Debt at Beginning of Fiscal Year	Additions	Reductions / Repayments			
Net Pension Liability		2,260,000.00		94,000.00	2,166,000.00		
Other Post-Employment Benefits (OPEB)		121,145.00	567.00		121,712.00		
Compensated Absences		70,876.00	29,401.00	9,592.00	90,685.00		
Totals for Debt Entered:		\$2,452,021.00	\$29,968.00	\$103,592.00	\$2,378,397.00		

LEA : 124151902 Coatesville Area SD

Printed 12/17/2025 9:43:04 AM

Accreted Interest Detail
Governmental Funds/ Activities

Debt Category	Debt Issue Date (MM/YYYY)	Beginning Accreted Interest	Additions	Reductions	Ending Accreted Interest	Ending bond Principal	Ending Principal Plus Accreted Interest
General Obligation Bonds/Notes – CAB	11/2020	3,646,127.00	1,015,899.00		4,662,026.00	21,050,075.00	25,712,101.00
General Obligation Bonds/Notes – CAB	11/2020	1,083,813.00	301,257.00		1,385,070.00	6,432,770.00	7,817,840.00
General Obligation Bonds/Notes – CAB	11/2020	503,687.00	139,925.00		643,612.00	3,005,755.00	3,649,367.00
General Obligation Bonds/Notes – CAB	11/2020	2,216,653.00	608,509.00	1,851.10	2,823,310.90	12,332,033.10	15,155,344.00
Totals for Debt Entered:		\$7,450,280.00	\$2,065,590.00	\$1,851.10	\$9,514,018.90	\$42,820,633.10	\$52,334,652.00

LEA : 124151902 Coatesville Area SD

Printed 12/17/2025 9:43:07 AM

General Fund (10)

Section 1: Tuition/Purchased Services as Reported within Expenditure Detail

	Amount
Tuition Reported in General Fund Expenditures 1000-560	88,120,260.24
Purchased Services in General Fund Expenditures 1000-594 and 1000-597	2,528.20
Section 1 Total	\$88,122,788.44

Section 2: Tuition Paid to Institution Types During Fiscal Year

	Tuition Paid For Nonspecial Education	Tuition Paid For Special Education	Total
1 1306 Institutions			
2 Institutionalized Children's Programs		2,528.20	2,528.20
3 Juveniles Incarcerated in Adult Facilities			
4 Residential Treatment Facilities			
5 Other Local Education Agencies	89,061.55	389,125.18	478,186.73
6 Brick and Mortar Charter Schools	37,190,406.93	34,802,599.51	71,993,006.44
7 Cyber Charter Schools	3,274,036.01	2,823,703.85	6,097,739.86
8 Career and Technology Centers	3,672,063.91		3,672,063.91
9 Approved Private Schools		3,716,221.92	3,716,221.92
10 PA Chartered Schools for the Deaf and Blind			
11 Private Residential Rehabilitative Institutions	49,699.81	1,240.00	50,939.81
12 Juvenile Detention Centers	1,273.49		1,273.49
13 Special Program Jointures			
14 Other Tuition Not Included Elsewhere In This Section	107,855.59	2,002,972.49	2,110,828.08
Section 2 Total	\$44,384,397.29	\$43,738,391.15	\$88,122,788.44

LEA : 124151902 Coatesville Area SD

Printed 12/17/2025 9:43:16 AM

Food Service / Cafeteria Operations Fund (51)

3000 Operation of Non-Instructional Services

Total

100 Personnel Services – Salaries

100 Personnel Services – Salaries 965,521.00

Total Personnel Services – Salaries \$965,521.00

200 Personnel Services – Employee Benefits

210 Group Insurance – Contracted Provider 1,940.74

220 Social Security Contributions 74,722.17

230 PSERS Retirement Contributions 158,023.41

250 Unemployment Compensation 363.19

260 Workers' Compensation 3,094.25

270 Group Insurance – Self-Insurance 125,065.24

280 Other Post-Employment Benefits (OPEB) 1,472.00

292 Health Savings Accounts 13,500.00

Total Personnel Services – Employee Benefits \$378,181.00

300 Purchased Professional and Technical Services

340 Technical Services 9,855.00

Total Purchased Professional and Technical Services \$9,855.00

400 Purchased Property Services

430 Repairs and Maintenance Services 37,925.49

440 Rentals 2,700.00

Total Purchased Property Services \$40,625.49

500 Other Purchased Services

580 Travel 1,066.52

Total Other Purchased Services \$1,066.52

600 Supplies

610 General Supplies 111,919.41

620 Energy 1,322.38

630 Food 1,936,984.21

Total Supplies \$2,050,226.00

700 Property

740 Depreciation 23,777.00

Total Property \$23,777.00

800 Other Objects

810 Dues and Fees 2,659.50

Total Other Objects \$2,659.50

Total 3000 Operation of Non-Instructional Services \$3,471,911.51

Food Service / Cafeteria Operations Fund (51)

	<u>Elementary</u>	<u>Secondary</u>	<u>Federal</u>	<u>Total</u>
3100 Food Services				
100 Personnel Services – Salaries				
100 Personnel Services – Salaries				965,521.00
Total Personnel Services – Salaries				\$965,521.00
200 Personnel Services – Employee Benefits				
210 Group Insurance – Contracted Provider				1,940.74
220 Social Security Contributions				74,722.17
230 PSERS Retirement Contributions				158,023.41
250 Unemployment Compensation				363.19
260 Workers' Compensation				3,094.25
270 Group Insurance – Self-Insurance				125,065.24
280 Other Post-Employment Benefits (OPEB)				1,472.00
292 Health Savings Accounts				13,500.00
Total Personnel Services – Employee Benefits				\$378,181.00
300 Purchased Professional and Technical Services				
340 Technical Services				9,855.00
Total Purchased Professional and Technical Services				\$9,855.00
400 Purchased Property Services				
430 Repairs and Maintenance Services				37,925.49
440 Rentals				2,700.00
Total Purchased Property Services				\$40,625.49
500 Other Purchased Services				
580 Travel				1,066.52
Total Other Purchased Services				\$1,066.52
600 Supplies				
610 General Supplies				111,919.41
620 Energy				1,322.38
630 Food				1,936,984.21
Total Supplies				\$2,050,226.00
700 Property				
740 Depreciation				23,777.00
Total Property				\$23,777.00
800 Other Objects				
810 Dues and Fees				2,659.50
Total Other Objects				\$2,659.50
Total 3100 Food Services				\$3,471,911.51

	<u>Food Service(51)</u>	<u>Child Care Operations(52)</u>	<u>Other Enterprise(58)</u>	<u>Internal Service(60)</u>	<u>Total</u>
3000 <u>Operation of Non-Instructional Services</u>					
3100 Food Services	3,471,911.51				3,471,911.51
Total Operation of Non-Instructional Services	\$3,471,911.51				\$3,471,911.51
TOTAL ACTUAL EXPENDITURES & OTHER FINANCING USES	\$3,471,911.51				\$3,471,911.51

LEA : 124151902 Coatesville Area SD

Printed 12/17/2025 9:43:35 AM

Fund	School	School Number	Local Personnel	Local Nonpersonnel	State Personnel	State Nonpersonnel	Federal Personnel	Federal Nonpersonnel	Total	Explanation
10										
	Caln El Sch	1376	5,344,399.00	2,999,130.00	247,021.00	66,206.00	224,763.00	350,869.00	9,232,388.00	
	Coatesville Area SHS	5012	17,316,281.00	8,010,410.00	9,963.00	124,483.00	393,110.00	1,076,876.00	26,931,123.00	
	Coatesville Intermediate HS	8416	11,381,225.00	5,617,377.00	7,293.00	94,031.00	215,000.00	1,036,853.00	18,351,779.00	
	East Fallowfield El Sch	1374	4,002,586.00	2,003,609.00	247,238.00	50,229.00	173,978.00	228,562.00	6,706,202.00	
	Kings Highway El Sch	1375	5,784,879.00	3,177,879.00	271,735.00	70,297.00	180,315.00	373,988.00	9,859,093.00	
	North Brandywine MS	8467	5,408,076.00	2,050,136.00	2,487.00	46,439.00	173,448.00	239,719.00	7,920,305.00	
	Rainbow El Sch	1370	8,932,004.00	4,652,927.00	326,732.00	93,128.00	342,919.00	557,048.00	14,904,758.00	
	Reeceville El Sch	7334	4,850,345.00	2,617,734.00	31,881.00	61,065.00	328,776.00	308,825.00	8,198,626.00	
	Scott MS	7767	6,627,225.00	2,864,519.00	3,799.00	60,687.00	196,916.00	352,561.00	10,105,707.00	
Total			69,647,020.00	33,993,721.00	1,148,149.00	666,565.00	2,229,225.00	4,525,301.00	112,209,981.00	