



**Learn today.
Lead tomorrow.**

23/24

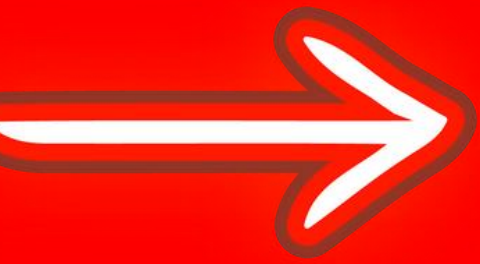
Student Opportunities

Bentley Community Schools

Unleash the magic of possibility and join us in igniting a world of wonder for our young scholars.

updated 10.10.23





Barhitte Elementary



6040 Roberta St., Burton, MI 48509

810.591.9661 | Principal Debbi Gooch



**K-5th
grades**



**319
students**

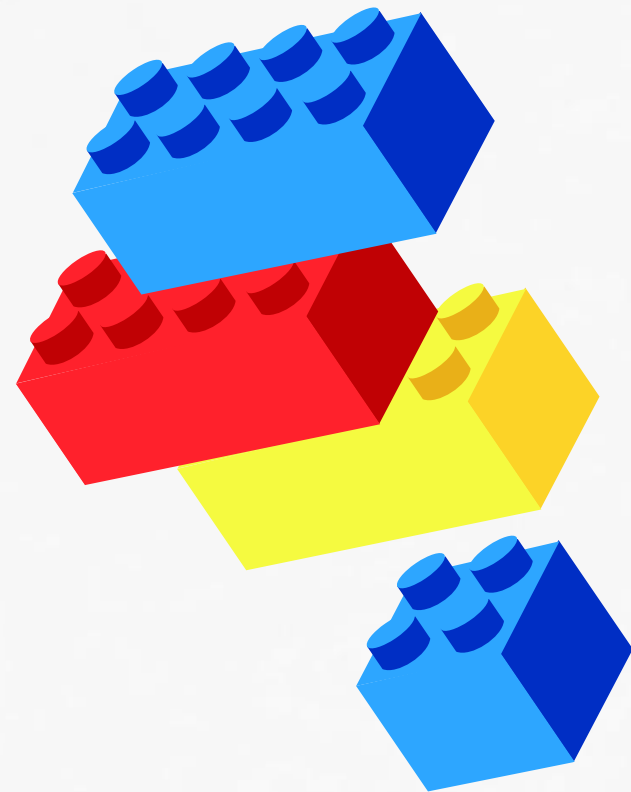


Elementary CLUBS



Explore a variety of
experiences at Barhitte!

Not all activities are available at each grade level.



Activity	Advisor
Theater	Mrs. Kathy Mohr kamohr@bentleyschools.org
Lego Robotics	Mrs. Wendy Doyle wdoyle@bentleyschools.org
Math Hoops	Ms. Robyn Seelye rseelye@bentleyschools.org
Student Council	Mrs. Kim Roberts kroberts@bentleyschools.org



Parent & Family Engagement



Join the fun at Barhitte!

There are many opportunities to get involved in our school.
Examples include:

Bingo Night

Sing Along with Santa

STEM Night

Doughnuts with Grown Ups

Class Field Trips

and so much more!

Activities may vary each year.



Academic & Behavior Supports



We have dedicated programs and staff to help our students become productive learners!

Tutoring & Summer School

After-school tutoring in math and reading is available during the school year. Summer school often runs in the summer, focusing on engagement, reading, and math.



Academic Intervention

We have certified teachers and paraprofessionals to coach students in both reading and math.



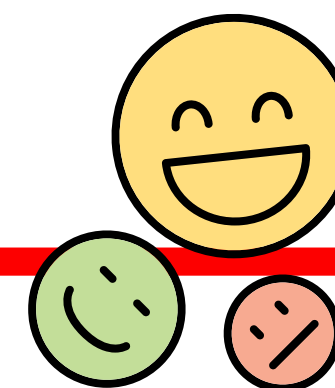
Behavior Intervention

A social worker and several behavior interventions guide students through the ups and downs.



Socio-Emotional Learning

Barhitte uses lessons from PATHS to help students learn to make good choices.





Bentley Middle School



1180 N. Belsay Rd., Burton, MI 48509

810.591.9043 | Principal Scott Bednarski



6-8th
grades



152
students



BENTLEY MIDDLE SCHOOL

1180

B1

BULL DOGS



Middle School CLUBS



NEW

NEW

NEW

Activity	Advisor
Robotics	Mrs. Patty Camp pcamp@bentleyschools.org
YES!	Mr. Connor Bilkos cbilkos@bentleyschools.org
GSA	Mr. Connor Bilkos cbilkos@bentleyschools.org
Student Council	Mrs. Amy Ritzert aritzert@bentleyschools.org
School of Rock	Mr. Shawn Nolan snolan@bentleyschools.org



Middle School Athletics

For more information, contact Mr. Todd Schultz, Athletic Director
tschultz@bentleyschools.org | 810.591.9062



FALL	WINTER	SPRING
Cheerleading	Cheerleading	Baseball
Football	Boys Basketball	Softball
Girls Basketball	Volleyball	Track
		Skeet



BMS Courses Offered



Courses available to the 6th 7th, and
8th Grade Students.

Please note that courses may not be offered at all
grade levels or offered each year.



English Language Arts | Social Studies | Math
Science | Physical Education

Intervention: Math & Reading

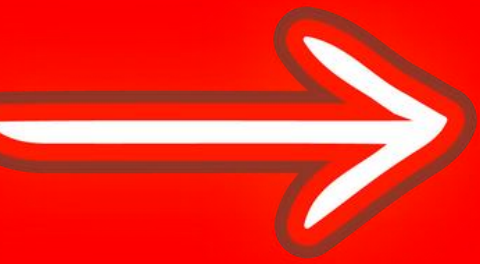
Computer Science

Communications & Yearbook

Personal Finance

Art | Health | Band | Math Hoops





Bentley High School



1150 N. Belsay Rd., Burton, MI 48509

810.591.5811 | Principal Justin Dickerson



9-12th
grades



236
students



High School Athletics

For more information, contact Mr. Todd Schultz, Athletic Director
tschultz@bentleyschools.org | 810.591.9062



FALL	WINTER	SPRING
Cheerleading	Cheerleading	eSports
Football	Boys Basketball	Baseball
eSports	Bowling	Softball
Volleyball	Powerlifting/Conditioning	Track
Strength & Conditioning	Girls Basketball	Skeet
	Wrestling	Strength & Conditioning



HIGHSCHOOL

GET INVOLVED!



Activity	Advisor
Robotics	Mrs. Patty Camp pcamp@bentleyschools.org
Marching Band	Mrs. Marianne Nolan mnolan@bentleyschools.org
National Honor Society	Ms. Jayna Vineyard jvineyard@bentleyschools.org
Student Council	Mrs. Michelle VanVallis mvanvallis@bentleyschools.org



BHS Courses Offered



The high school offers many exciting learning opportunities for our students!

Course offerings may change at semester or each year, as needed.

ATTENTION

AP Courses: AP World History & AP Psychology

Algebra I & II | Geometry | Precalculus | Consumers Math

English 9, 10, 11 & 12 | Government | Spanish

Sports Medicine | Marine Biology | Biology | Physical Science

Chemistry | American Sign Language | Spanish I & II

U.S. History | World History | Black American History

Music History | Band | Art 1 & 2 | Yearbook | Study Skills

Abnormal Psychology | “We The People” | Life Skills

GenNet Classes | Michigan Virtual | Edmentum | Credit Recovery



College & Career Support

Educational Development Plans (EDPs):

All students complete a plan focusin on their career and college goals

Michigan College Access Network (MCAN):

We have a dedicated adviser to help students prepare for post-secondary plans!

Dual Enrollment, Early Middle College & Genesee Career Institute

**College Visits, Career Fairs, Expert Speakers, and
MORE!**



➔ **BOLD Alternative Education**

1150 N. Belsay Rd., Burton, MI 48509

810.591.9811 | Principal Justin Dickerson



**9-12th
grades**



**16
students**



**ONLINE
LEARNING**



For more information
Visit www.bentleyschools.org

