

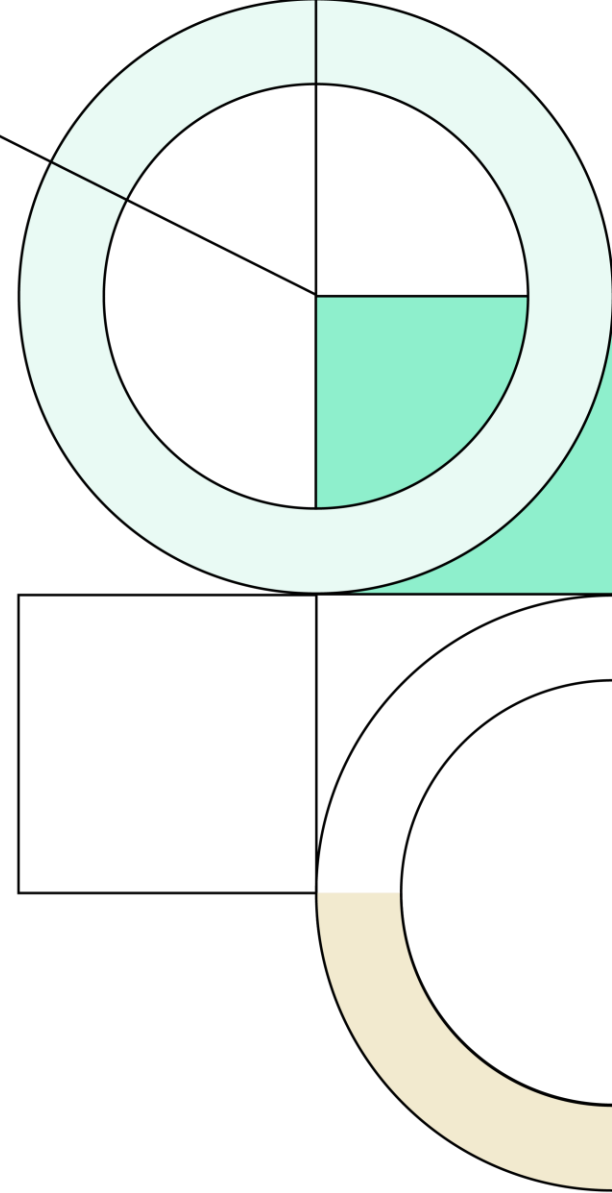


# Round Rock Independent School District

4Q24

## Demographic Report

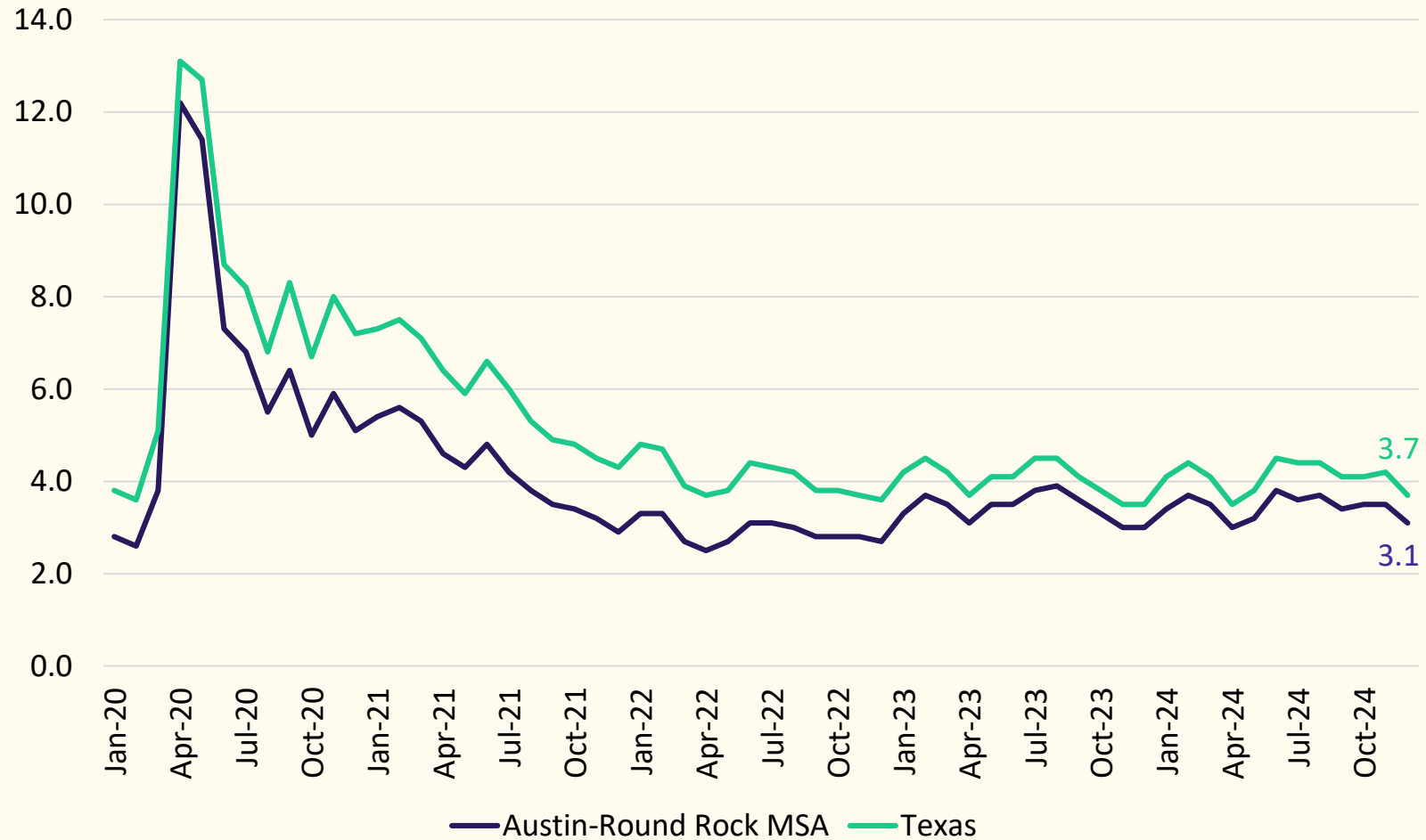
May 8<sup>th</sup>, 2025



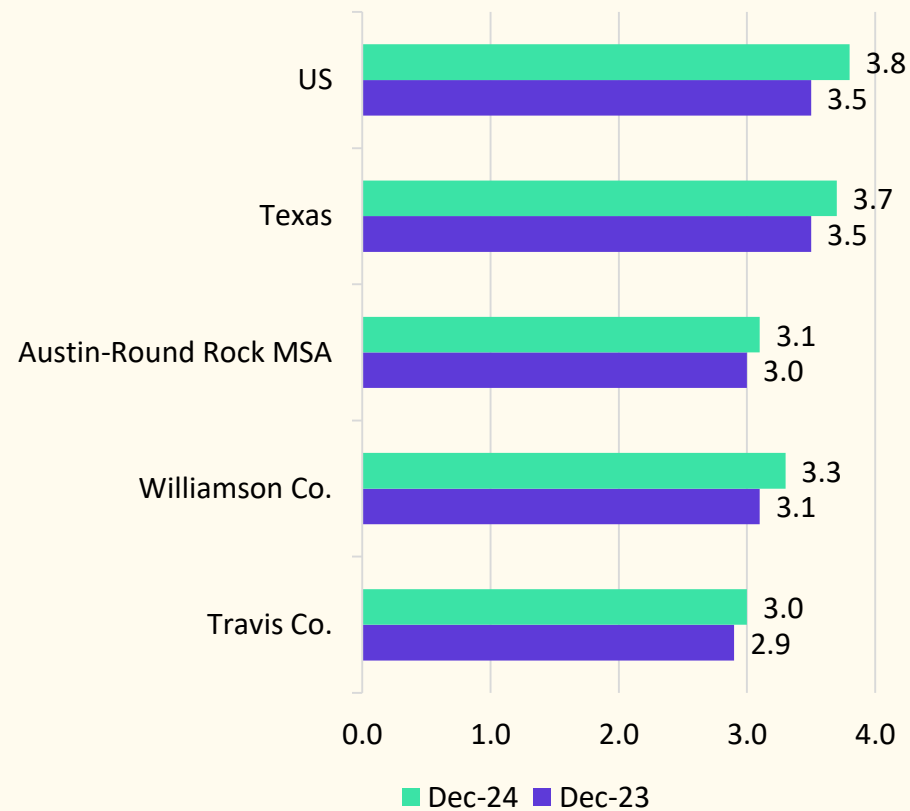


# Local Economic Conditions

## Unemployment Rates, Jan 2020 - Dec 2024



## Unemployment Rate, Year-Over-Year





# Housing Activity by MSA

## Top 25 Housing Starts Markets (4Q2024)

Rank	Market	4Q24 Annualized Starts	4Q24 YOY Change	4Q19 Annualized Starts	Change from 2019
1	Dallas	47,421	13%	34,816	36%
2	Houston	39,036	10%	30,646	27%
3	Phoenix	22,800	32%	21,598	6%
4	San Antonio	18,232	25%	13,816	32%
5	Atlanta	18,206	2%	23,113	-21%
6	Austin	16,293	2%	18,952	-14%
7	Orlando	13,524	-15%	14,624	-8%
8	Tampa	12,131	1%	12,296	-1%
9	Charlotte	11,991	2%	12,136	-1%
10	Raleigh	11,848	15%	10,033	18%
11	Las Vegas	11,499	18%	9,852	17%
12	Riverside/San Bernardino	11,025	-4%	9,780	13%
13	Washington, DC	10,963	8%	12,608	-13%
14	Jacksonville	10,341	5%	8,833	17%
15	Sarasota	10,010	12%	6,071	65%
16	Nashville	9,348	2%	8,955	4%
17	Miami	9,087	4%	8,058	13%
18	Portland	8,789	85%	5,273	67%
19	Seattle	8,270	32%	8,579	-4%
20	Denver	8,199	8%	9,925	-17%
21	Lakeland	7,846	7%	5,084	54%
22	Boise	7,456	42%	6,468	15%
23	Minneapolis	7,436	12%	7,852	-5%
24	Indianapolis	7,196	15%	6,019	20%
25	Chicago	7,020	9%	6,110	15%

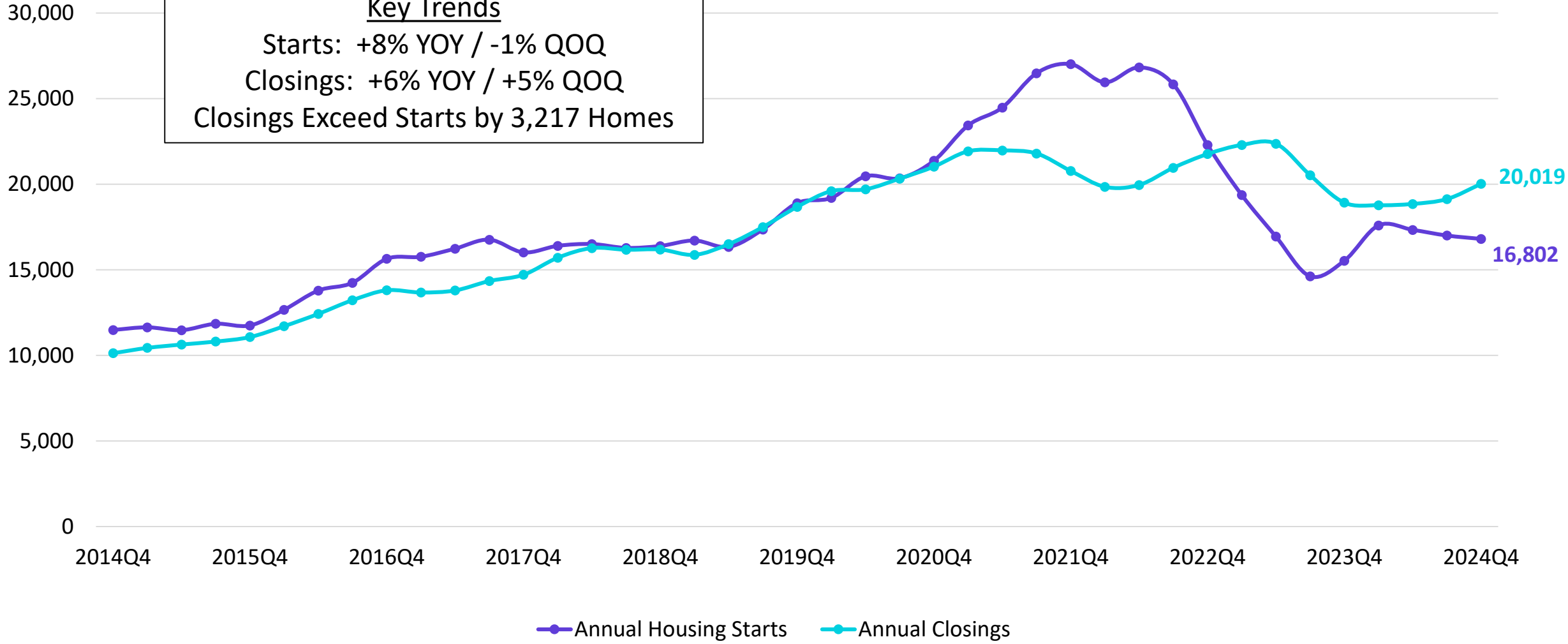
Source: Zonda



# Austin New Home Starts & Closings

### Annual Housing Starts vs. Annual Closings

**Key Trends**  
 Starts: +8% YOY / -1% QOQ  
 Closings: +6% YOY / +5% QOQ  
 Closings Exceed Starts by 3,217 Homes



Source: Zonda

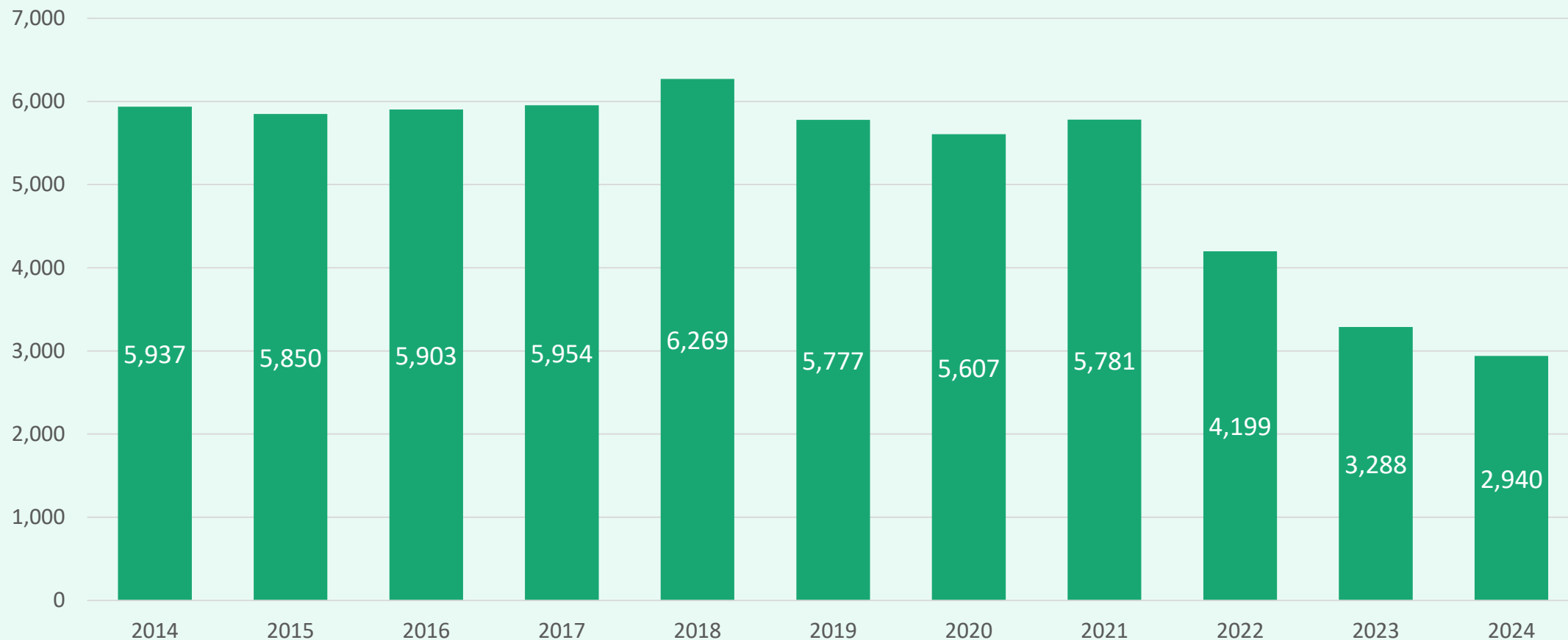


# Round Rock ISD Housing Market Analysis

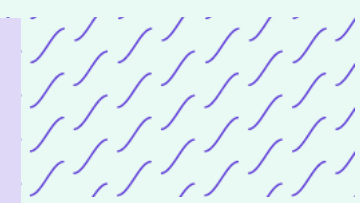
## District Annual Home Sales, 2014 – 2024



Total Home Sales



- Total home sales within Round Rock ISD have fallen by almost half in the last 3 years, due in part to rising inflation costs and interest rate increases

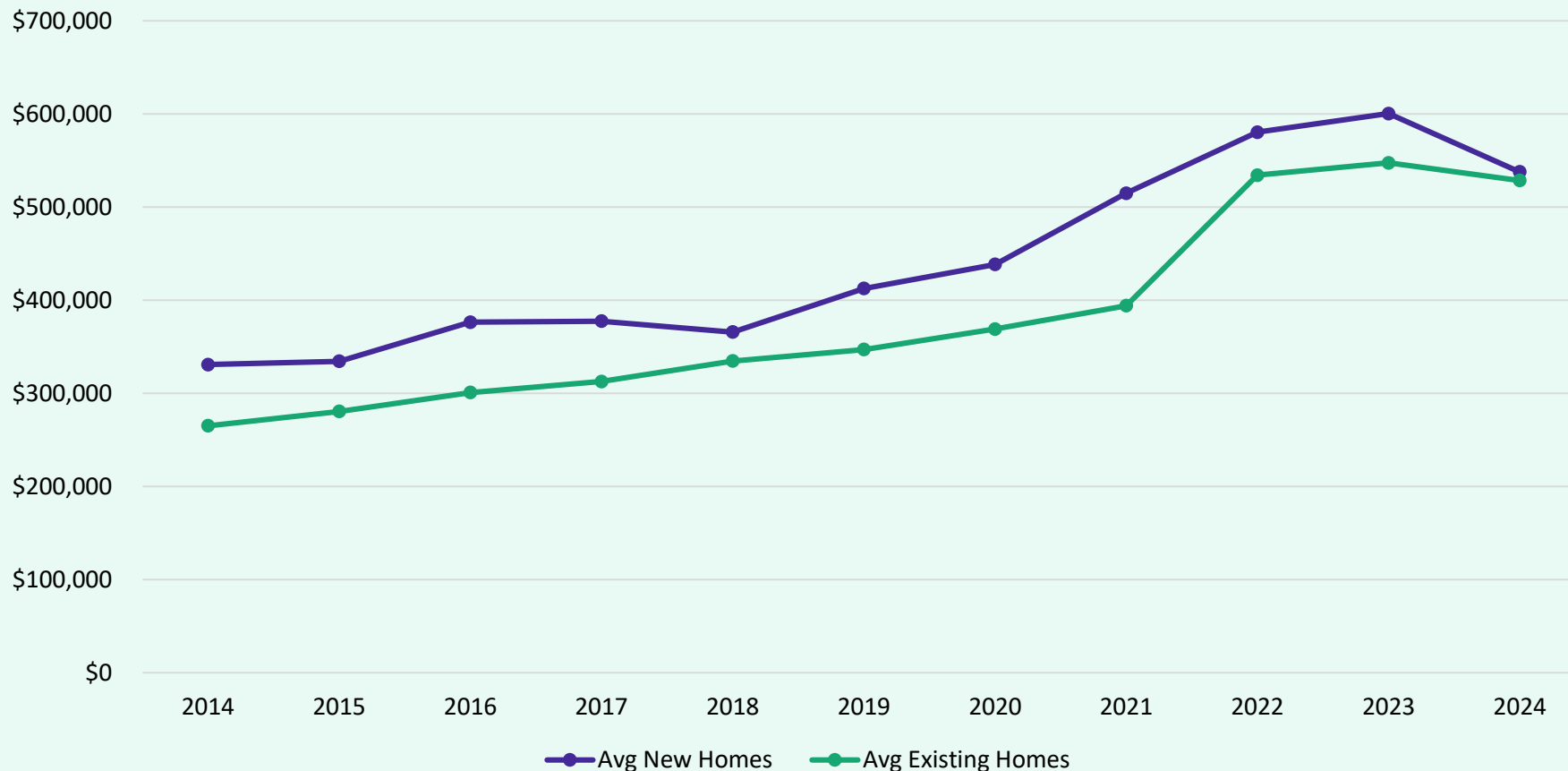




# Round Rock ISD Housing Market Analysis

## Average New vs. Existing Home Sale Price, 2014 - 2024

New v. Existing Home Price



- The average new home sale price in Round Rock ISD has risen over 62% between 2014 and 2024, an increase of nearly \$207,000
- The average existing home sale price in RRISD has nearly doubled in the last 10 years, an increase of nearly \$263,400

Year	Avg New Home	Avg Existing Home
2014	\$330,795	\$265,148
2015	\$334,292	\$280,549
2016	\$376,306	\$300,750
2017	\$377,484	\$312,727
2018	\$365,761	\$334,645
2019	\$412,511	\$347,038
2020	\$438,413	\$369,040
2021	\$514,812	\$394,070
2022	\$580,406	\$534,175
2023	\$600,415	\$547,474
2024	\$537,704	\$528,534



# Austin New Home Ranking Report

ISD Ranked by Annual Closings – 4Q24

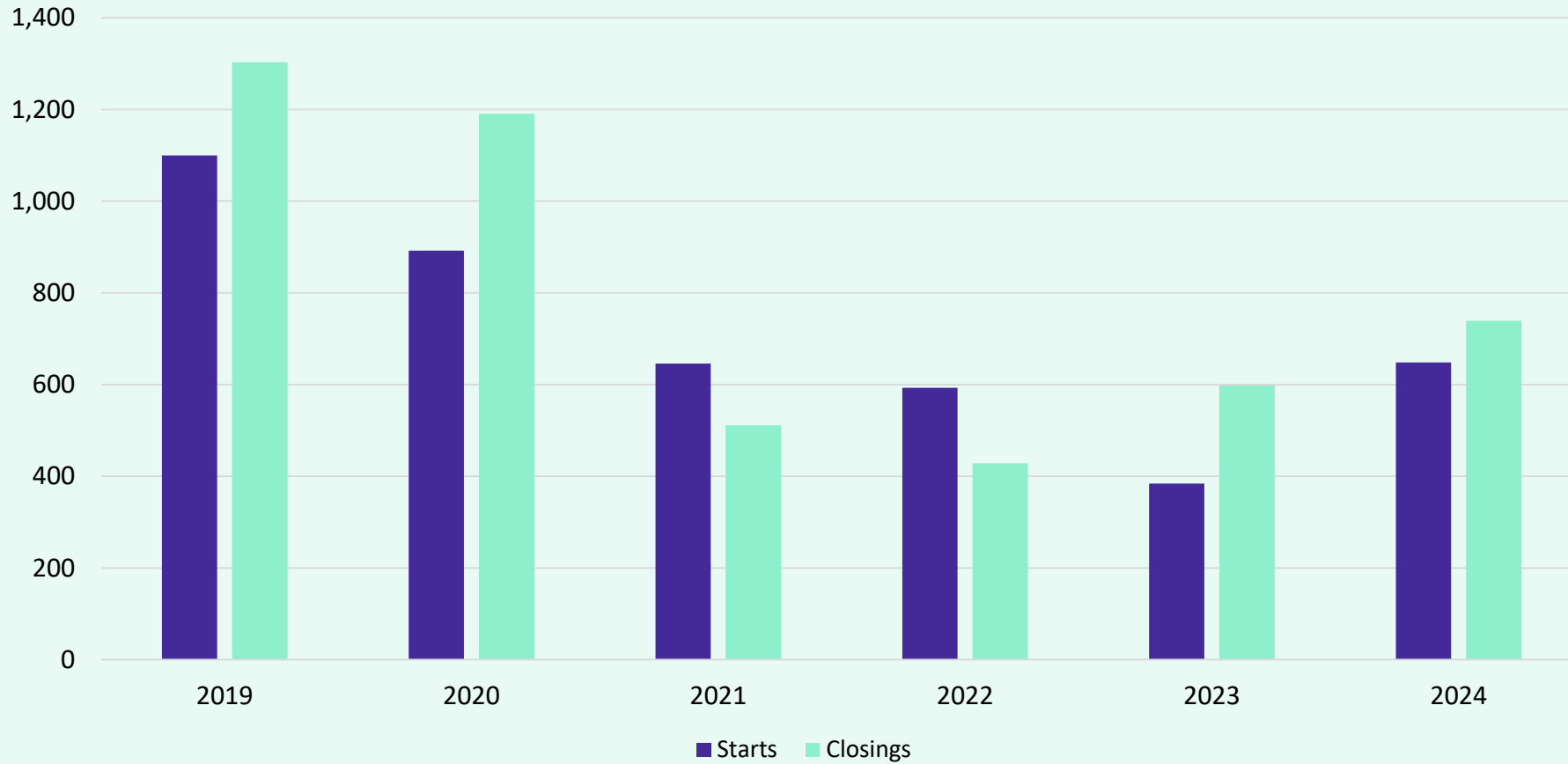
Rank	District Name	Annual Starts	Annual Closings	Inventory	VDL	Future
1	HAYS CISD	3,196	4,100	1,576	6,382	38,509
2	LIBERTY HILL ISD	1,775	1,962	842	3,139	8,174
3	GEORGETOWN ISD	1,417	1,856	1,100	2,994	23,705
4	LEANDER ISD	1,373	1,654	779	1,908	4,828
5	HUTTO ISD	1,031	1,350	554	1,488	14,250
6	AUSTIN ISD	519	1,318	1,757	1,151	10,772
7	JARRELL ISD	1,243	1,278	477	2,692	10,261
8	MANOR ISD	717	963	480	1,428	15,917
9	DEL VALLE ISD	930	851	622	1,820	25,596
10	PFLUGERVILLE ISD	759	840	291	1,325	10,326
11	ROUND ROCK ISD	648	739	347	987	2,370
12	BASTROP ISD	399	676	336	3,202	21,551
13	LOCKHART ISD	485	624	221	811	23,812
14	ELGIN ISD	658	599	390	726	14,332
15	DRIPPING SPRINGS ISD	414	534	296	1,022	7,227
16	SAN MARCOS CISD	407	525	312	1,316	8,685
17	LAKE TRAVIS ISD	342	481	254	937	3,757
18	MARBLE FALLS ISD	179	266	70	1,023	8,024
19	LAGO VISTA ISD	102	77	101	703	5,033
20	BURNET CISD	118	71	94	943	1,120

\* Based on additional Zonda Education housing research



# District New Home Starts and Closings

Annual Starts and Closings



Starts	2019	2020	2021	2022	2023	2024
1Q	262	250	128	137	31	175
2Q	249	312	150	229	114	200
3Q	311	162	213	179	164	159
4Q	278	168	155	48	75	114
<b>Total</b>	<b>1,100</b>	<b>892</b>	<b>646</b>	<b>593</b>	<b>384</b>	<b>648</b>

Closings	2019	2020	2021	2022	2023	2024
1Q	335	311	168	97	150	99
2Q	400	289	157	62	232	258
3Q	269	286	85	136	151	184
4Q	299	304	101	133	65	198
<b>Total</b>	<b>1,303</b>	<b>1,191</b>	<b>511</b>	<b>428</b>	<b>598</b>	<b>739</b>

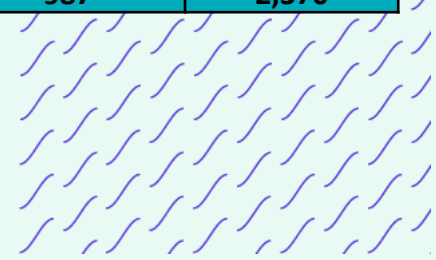


# District Housing Overview by Elementary Zone



ELEMENTARY	Annual Starts	Quarter Starts	Annual Closings	Quarter Closings	Under Construction	Inventory	Vacant Dev. Lots	Future Lots
BERKMAN	4	4	0	0	18	25	117	0
BLACKLAND PRAIRIE	38	0	28	10	4	18	0	0
CALLISON	41	14	49	14	26	50	219	194
DEEP WOOD	1	1	0	0	1	1	17	0
DOUBLE FILE TRAIL	132	28	221	55	42	55	113	0
FERN BLUFF	81	17	66	29	25	27	88	48
FOREST CREEK	0	0	0	0	0	0	0	139
GATTIS	21	4	3	3	8	18	94	260
GREAT OAKS	6	0	0	0	6	6	10	0
HERRINGTON	9	0	15	0	12	12	8	96
JOHNSON	0	0	5	0	0	0	0	0
LIVE OAK	0	0	0	0	0	0	0	60
OLD TOWN	41	3	49	18	15	17	41	0
PURPLE SAGE	0	0	0	0	0	0	0	72
REDBUD	271	43	272	69	109	118	280	514
SOMMER	0	0	0	0	0	0	0	179
TERAVISTA	3	0	31	0	0	0	0	0
UNION HILL	0	0	0	0	0	0	0	776
VOIGT	0	0	0	0	0	0	0	32
<b>Grand Total</b>	<b>648</b>	<b>114</b>	<b>739</b>	<b>198</b>	<b>266</b>	<b>347</b>	<b>987</b>	<b>2,370</b>

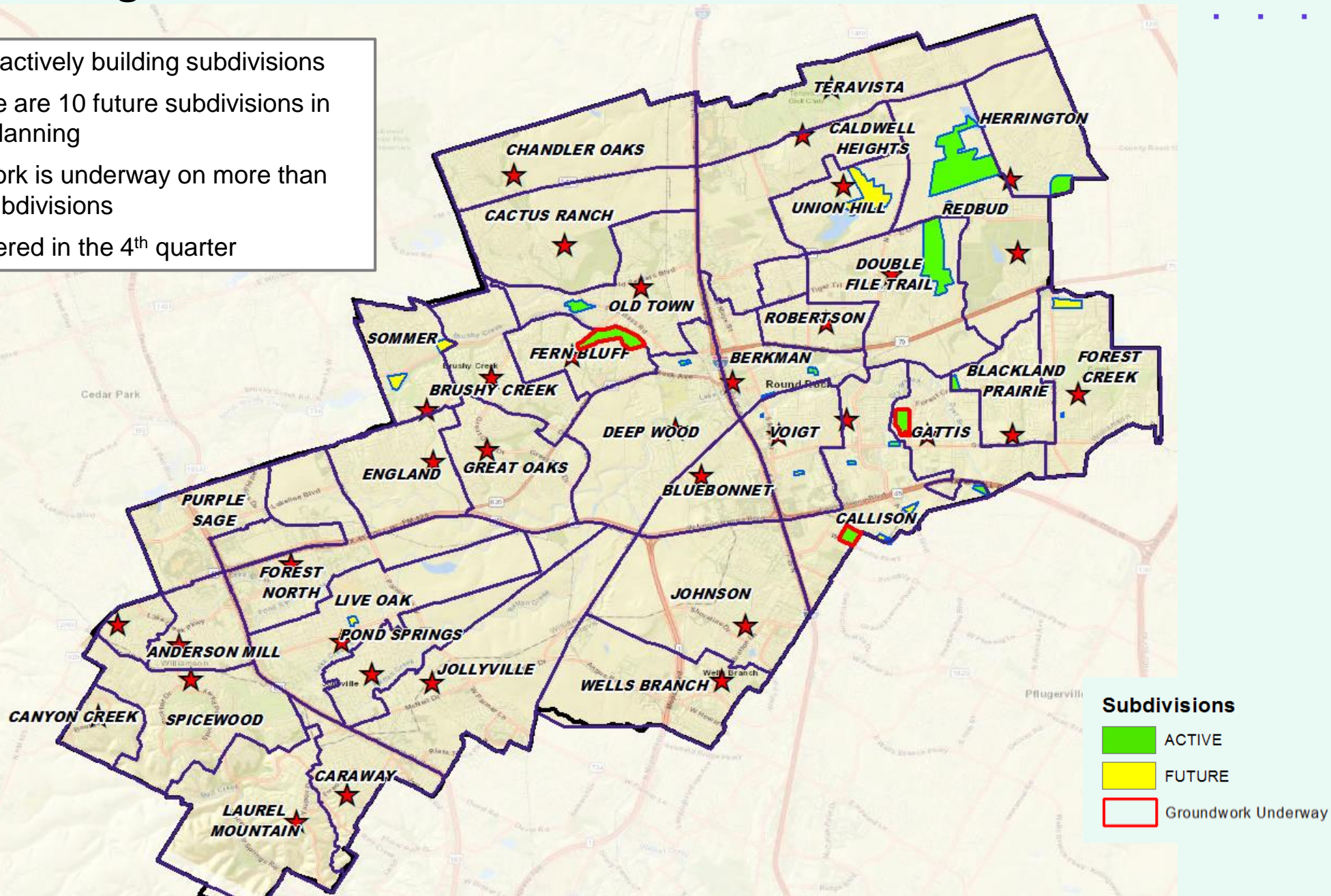
- Highest activity in the category
- Second highest activity in the category
- Third highest activity in the category





# District Housing Overview

- The district has 16 actively building subdivisions
- Within RRISD there are 10 future subdivisions in various stages of planning
- Of these, groundwork is underway on more than 350 lots within 3 subdivisions
- 112 lots were delivered in the 4<sup>th</sup> quarter



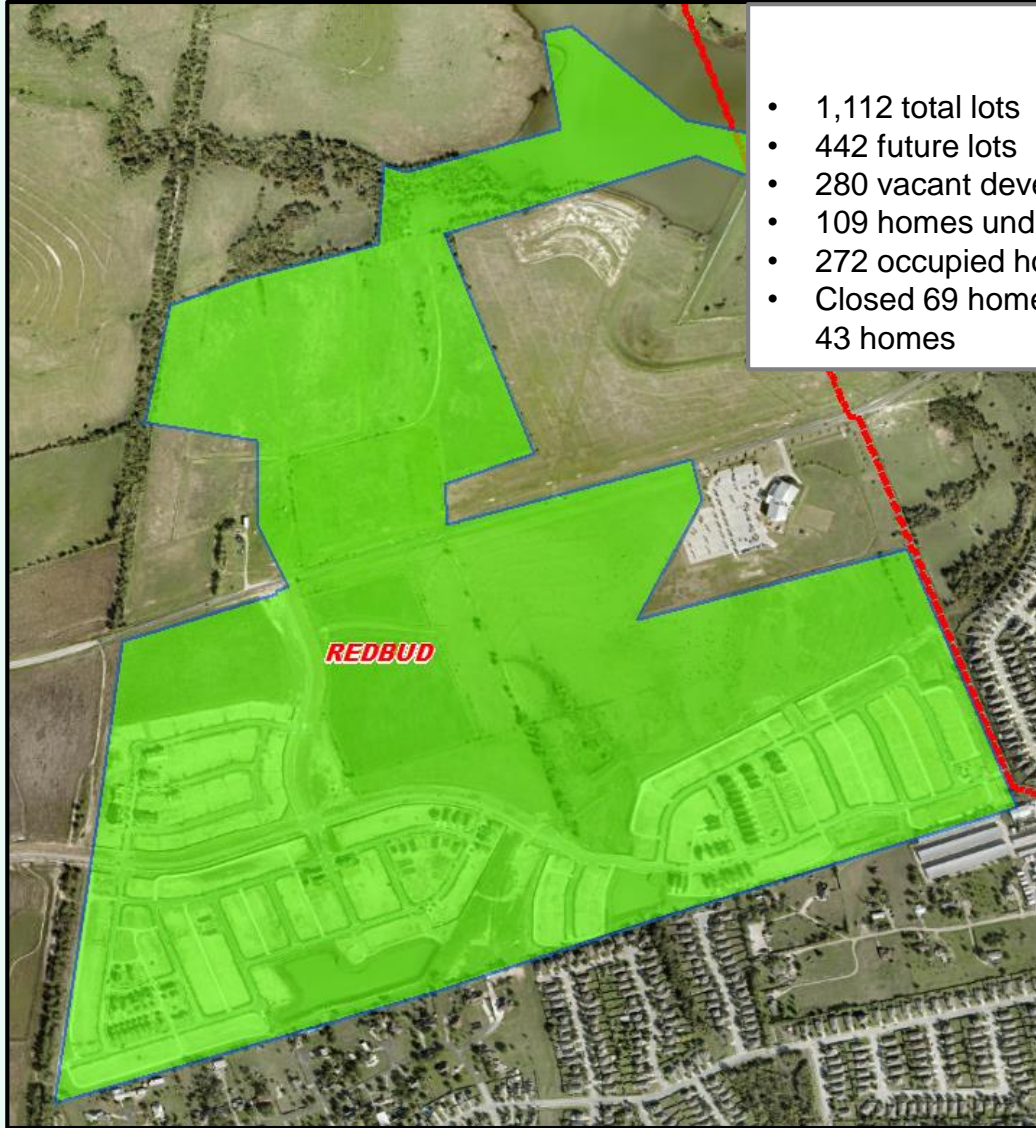


# Residential Activity

February 2025

## Avery Park

- 1,112 total lots
- 442 future lots
- 280 vacant developed lots
- 109 homes under construction
- 272 occupied homes
- Closed 69 homes in 4Q24, and started construction on 43 homes



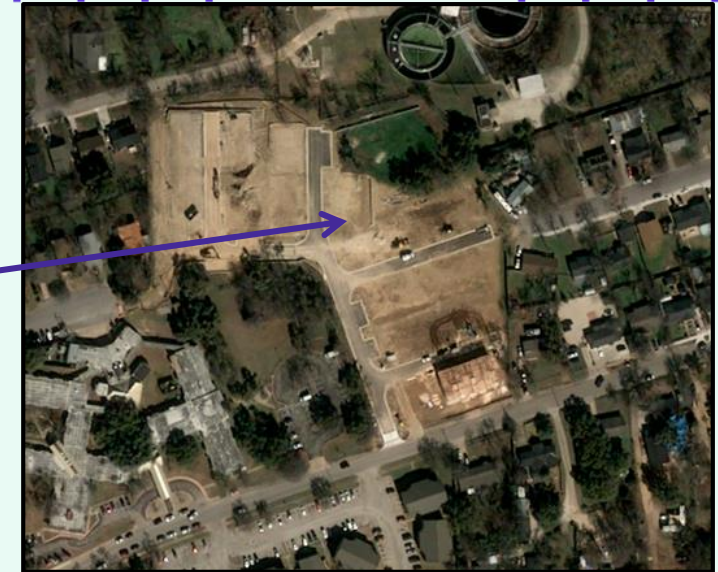


# Residential Activity



**Monarch on Main**

- 66 total lots
- 62 vacant developed lots
- 4 homes under construction
- All lots delivered in the past quarter
- Builder: Pulte Homes

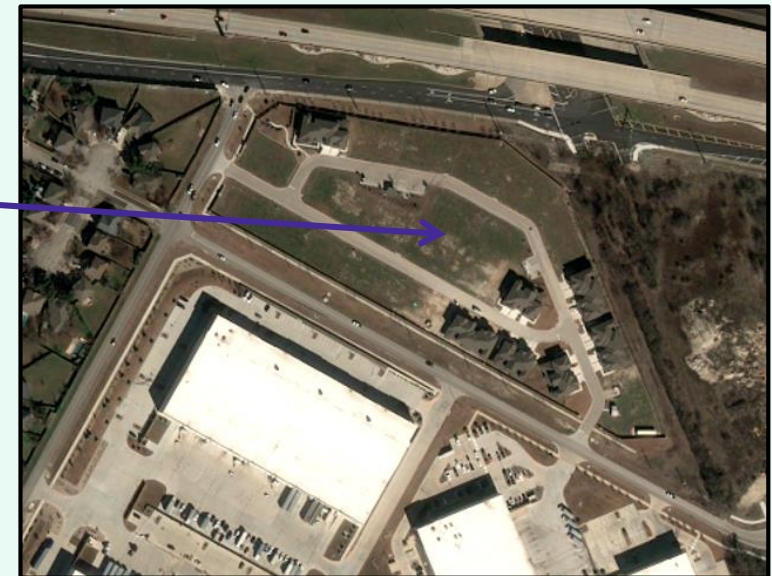


February 2025



**Center 45**

- 93 total lots
- 68 vacant developed lots
- 4 homes under construction
- 10 homes occupied
- Building 5-10 homes a year
- Builder: Pacesetter Homes



February 2025



# Residential Activity



## Sauls Ranch East

- 226 total lots
- 48 future lots
- 88 vacant developed lots
- 25 homes under construction
- 64 occupied homes
- Groundwork underway
- Builder: Coventry Homes
- Prices between \$795,000 and \$900,000
- 52 lots delivered in 4<sup>th</sup> Quarter

*February 2025*



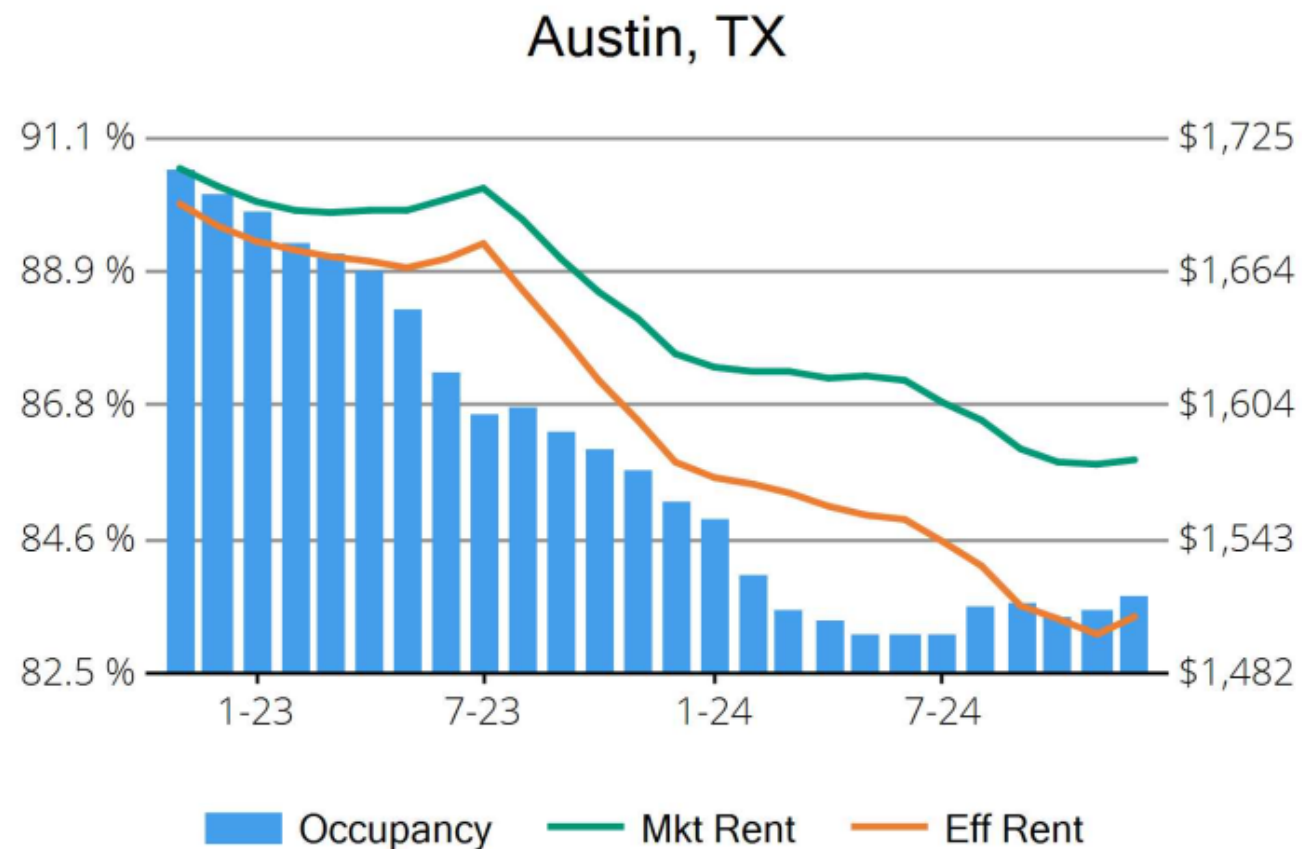


# Housing Market Trends: Multi-family Market- December 2024



## Stabilized and Lease-up Properties

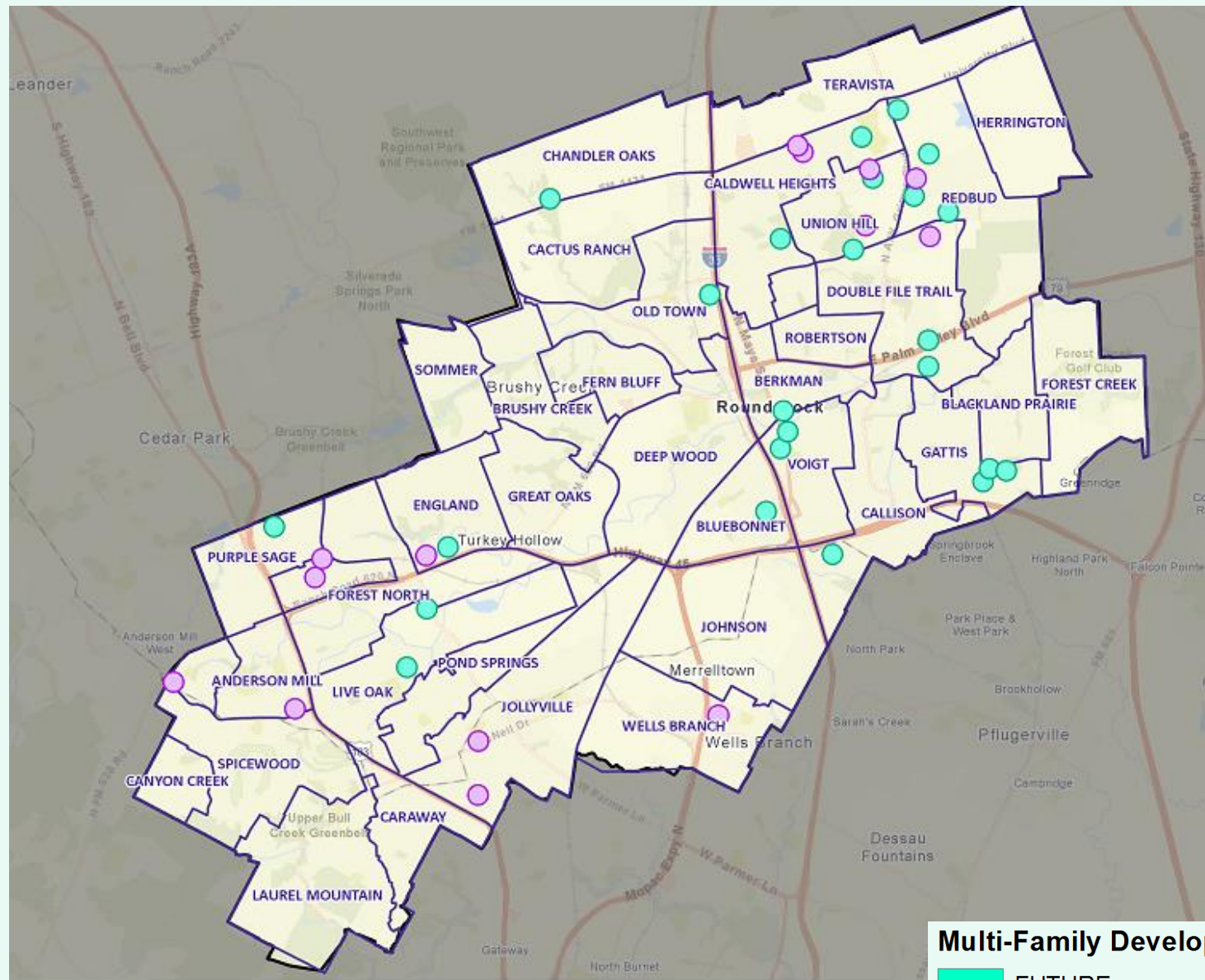
Conventional Properties	Dec 2024	Annual Change
Occupancy	83.7	-1.9%
Unit Change	19,193	
Units Absorbed (Annual)	11,785	
Average Size (SF)	875	+0.5%
Asking Rent	\$1,579	-2.8%
Asking Rent per SF	\$1.80	-3.3%
Effective Rent	\$1,508	-4.4%
Effective Rent per SF	\$1.72	-4.9%
% Offering Concessions	46%	+28.7%
Avg. Concession Package	9.1%	+19.8%





# District Multifamily Overview

- There are more than 3,000 multifamily units under construction, 280 of which are single family rental homes, and 319 of which are age-restricted
- There are almost 9,900 future multifamily units in various stages of planning across the district, including over 200 single family rental units
- Over 1,200 units were completed in the last six months



## Multi-Family Developments

- FUTURE
- UNDER CONSTRUCTION

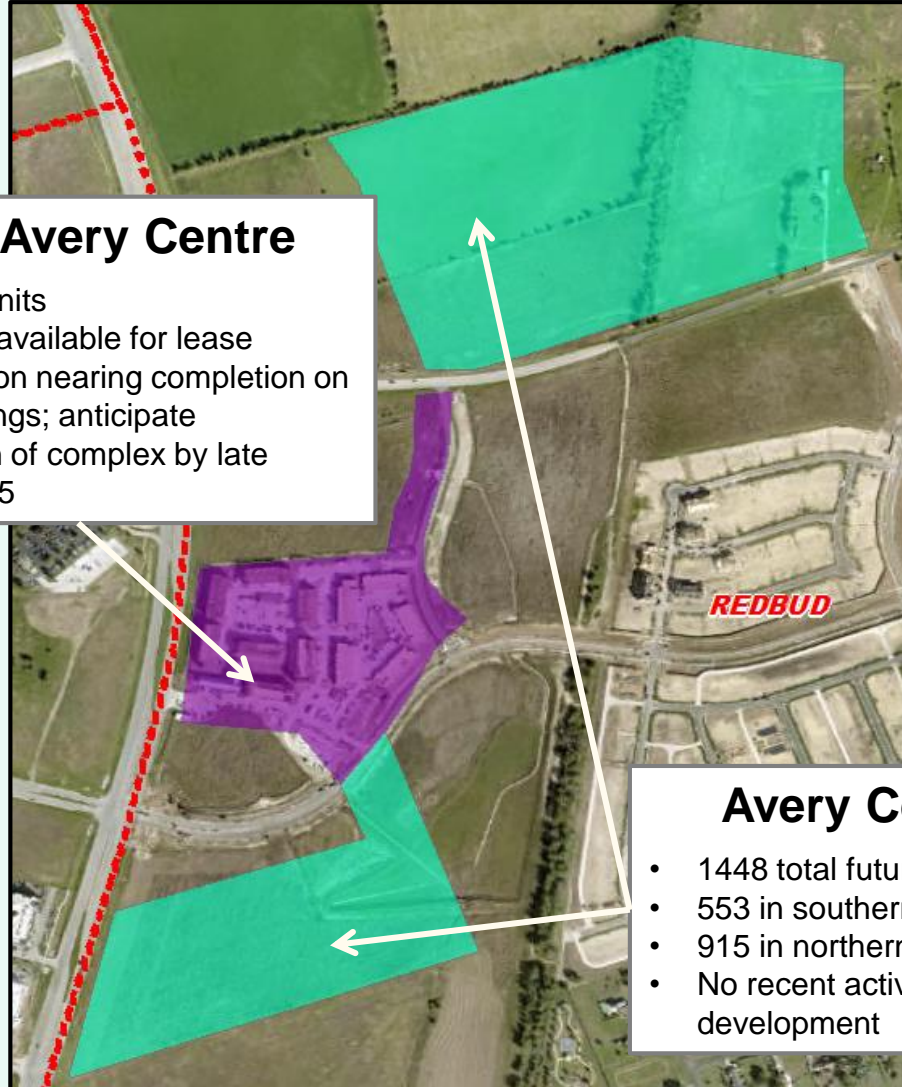


# Residential Activity

February 2025

## Azola Avery Centre

- 359 total units
- First units available for lease
- Construction nearing completion on final buildings; anticipate completion of complex by late spring 2025



## Avery Centre PUD

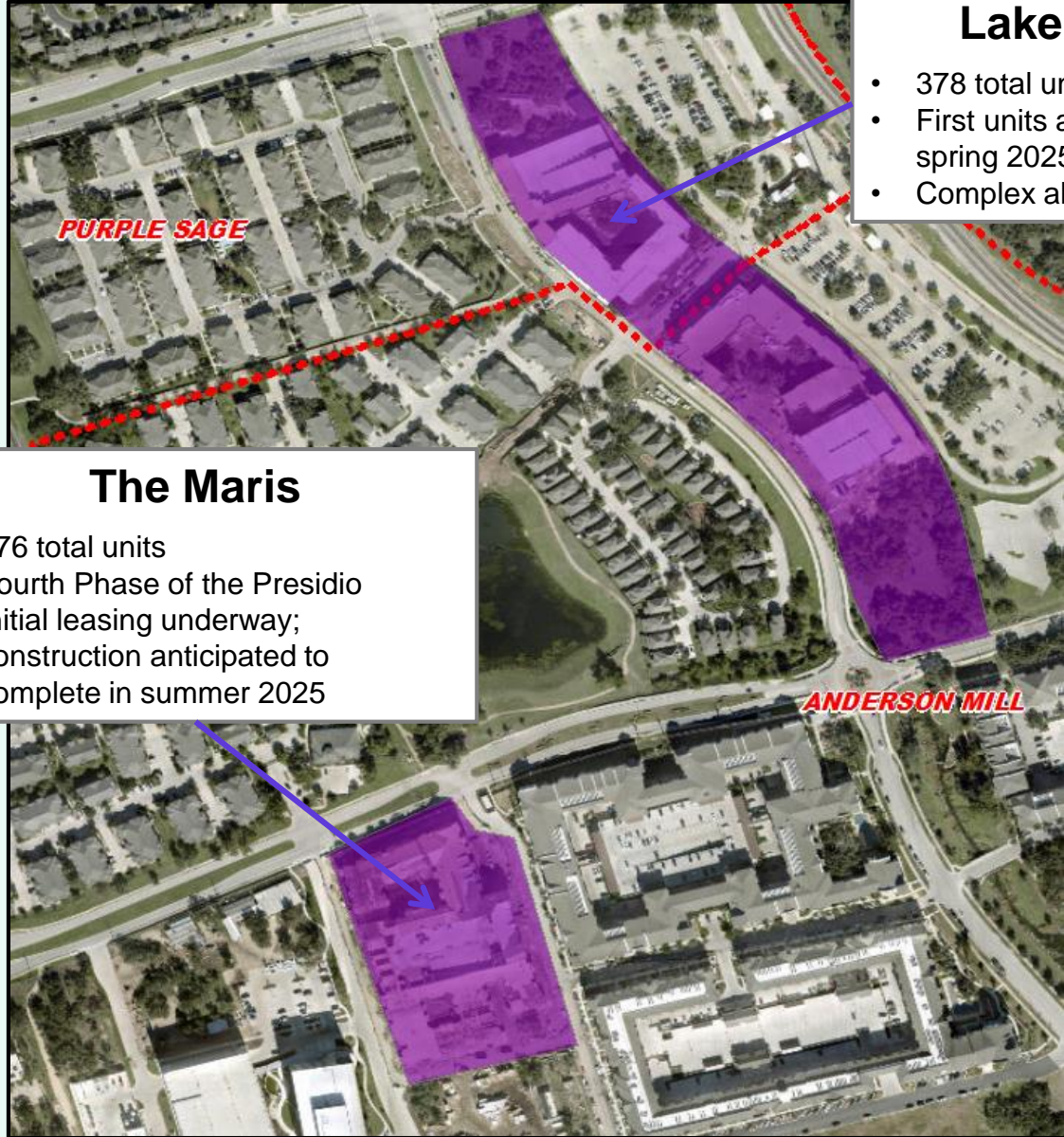
- 1448 total future units
- 553 in southern parcels
- 915 in northern parcels
- No recent activity on planned development





# Residential Activity

February 2025



## Lakeline Station

- 378 total units
- First units anticipated to lease in spring 2025
- Complex also includes retail space

## The Maris

- 276 total units
- Fourth Phase of the Presidio
- Initial leasing underway; construction anticipated to complete in summer 2025

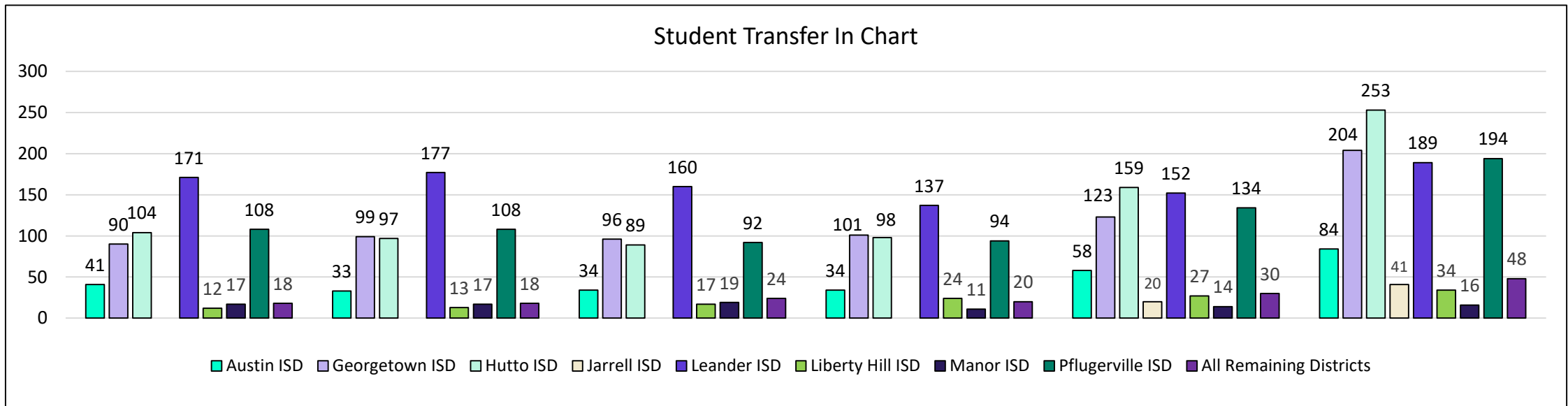




# TEA Transfer Information

Transfers In From	2019/20	2020/21	2021/22	2022/23	2023/24	2024/25	Multi-Year Change
Austin ISD	41	33	34	34	58	84	43
Georgetown ISD	90	99	96	101	123	204	114
Hutto ISD	104	97	89	98	159	253	149
Jarrell ISD	n/a	n/a	n/a	n/a	20	41	38
Leander ISD	171	177	160	137	152	189	18
Liberty Hill ISD	12	13	17	24	27	34	22
Manor ISD	17	17	19	11	14	16	-1
Pflugerville ISD	108	108	92	94	134	194	86
All Remaining Districts	18	18	24	20	30	48	30
<b>Total Transfers In</b>	<b>564</b>	<b>566</b>	<b>534</b>	<b>522</b>	<b>717</b>	<b>1,063</b>	<b>499</b>

\* Totals include additional districts, to comply with FERPA laws, some numbers are not available





# TEA Transfer Information

Transfers Out To	2019/20	2020/21	2021/22	2022/23	2023/24	2024/25	Multi-Year Change
Austin Discovery School	26	23	18	12	49	n/a	-22
Austin ISD	192	178	161	179	178	193	1
Basis Texas	0	122	327	530	773	852	852
Chaparral Star Academy	107	106	126	117	130	128	21
Eanes ISD	3	14	21	13	19	17	14
Fort Stockton ISD (Virtual)	0	0	0	0	30	71	71
Georgetown ISD	25	27	33	28	24	15	-10
Goodwater Montessori School	113	77	87	79	55	36	-77
Hallsville ISD (Virtual)	47	67	94	76	73	97	50
Harmony Public Schools - Central Texas	638	889	733	771	797	799	161
Hutto ISD	51	79	63	64	53	47	-4
IDEA Public Schools	121	489	567	706	327	787	666
Jubilee Academies	316	270	217	204	205	n/a	-313
KIPP Austin	29	31	44	48	43	37	8
Leander ISD	101	86	65	71	60	67	-34
Manor ISD	28	16	n/a	n/a	0	n/a	-25
Meridian World School	1,116	1,097	1,079	1,036	1,028	1,012	-104
NYOS Charter School	129	132	189	212	211	190	61
Orenda Charter School	622	663	719	711	708	713	91
Pflugerville ISD	100	125	114	152	146	174	74
Premier High Schools	56	65	84	57	65	51	-5
Texas College Preparatory Academies	90	34	93	99	87	66	-24
Valor Public Schools	3	136	190	219	306	357	354
<b>Total Transfers Out</b>	<b>4,098</b>	<b>4,992</b>	<b>5,248</b>	<b>5,723</b>	<b>5,634</b>	<b>6,047</b>	<b>1,949</b>

\* Totals include additional districts, to comply with FERPA laws, some numbers are not available



# Ten Year Forecast by Grade Level

Year (Oct.)	EE	PK	K	1st	2nd	3rd	4th	5th	6th	7th	8th	9th	10th	11th	12th	Total	Growth	%
2020/21	291	754	2,927	3,291	3,453	3,520	3,535	3,631	3,782	3,848	3,875	3,999	3,949	3,749	3,698	48,302		
2021/22	306	939	3,065	3,139	3,310	3,475	3,463	3,476	3,566	3,632	3,685	4,025	3,761	3,771	3,587	47,200	-1,102	-2.28%
2022/23	441	1,019	2,956	3,173	3,151	3,325	3,462	3,417	3,462	3,520	3,644	3,980	3,890	3,673	3,567	46,680	-520	-1.10%
2023/24	267	1,256	2,784	3,056	3,246	3,236	3,334	3,442	3,441	3,458	3,544	3,876	3,856	3,748	3,582	46,126	-554	-1.19%
2024/25	348	1,480	2,853	3,028	3,208	3,431	3,359	3,442	3,599	3,554	3,565	3,915	3,805	3,752	3,669	47,008	882	1.91%
2025/26	348	1,509	2,822	3,069	3,146	3,303	3,551	3,449	3,510	3,715	3,652	3,851	3,807	3,710	3,601	47,043	35	0.07%
2026/27	348	1,523	2,914	2,994	3,173	3,256	3,390	3,615	3,537	3,590	3,796	3,936	3,755	3,703	3,659	47,189	146	0.31%
2027/28	348	1,539	2,918	3,121	3,109	3,289	3,379	3,488	3,718	3,643	3,686	4,087	3,850	3,657	3,659	47,491	302	0.64%
2028/29	348	1,559	2,960	3,101	3,223	3,207	3,351	3,446	3,572	3,822	3,735	3,966	3,985	3,751	3,610	47,636	145	0.31%
2029/30	348	1,582	2,987	3,115	3,206	3,322	3,299	3,426	3,508	3,670	3,914	4,015	3,870	3,878	3,706	47,846	210	0.44%
2030/31	348	1,595	2,947	3,141	3,209	3,303	3,398	3,363	3,495	3,606	3,764	4,212	3,918	3,768	3,806	47,873	27	0.06%
2031/32	348	1,610	2,973	3,109	3,238	3,310	3,380	3,471	3,432	3,592	3,694	4,049	4,107	3,814	3,698	47,825	-48	-0.10%
2032/33	348	1,623	2,987	3,138	3,203	3,340	3,401	3,458	3,542	3,528	3,681	3,968	3,948	3,994	3,750	47,909	84	0.18%
2033/34	348	1,639	3,013	3,146	3,232	3,302	3,422	3,472	3,499	3,638	3,616	3,956	3,869	3,839	3,914	47,905	-4	-0.01%
2034/35	348	1,641	3,030	3,179	3,234	3,327	3,388	3,495	3,546	3,595	3,727	3,886	3,858	3,763	3,764	47,781	-124	-0.26%

Yellow box = largest grade per year  
 Green box = second largest grade per year



# Ten Year Forecast by Campus

Campus	TEA Compliant Capacity- Existing Facilities	Fall	ENROLLMENT PROJECTIONS									
		2024/25	2025/26	2026/27	2027/28	2028/29	2029/30	2030/31	2031/32	2032/33	2033/34	2034/35
ANDERSON MILL	696	574	603	590	591	596	610	595	603	597	599	603
BERKMAN	662	484	501	516	522	523	515	508	504	501	502	499
BLACKLAND PRAIRIE	1,037	795	795	803	790	798	799	801	810	804	804	803
BLUEBONNET	612	407	418	421	429	424	427	411	417	418	413	415
BRUSHY CREEK	726	467	458	431	423	419	416	426	430	424	423	420
CACTUS RANCH	900	691	663	632	628	620	636	637	627	618	617	610
CALDWELL HEIGHTS	1,056	629	626	620	621	636	634	630	631	626	625	624
CALLISON	920	654	673	689	709	709	724	712	712	701	697	702
CANYON CREEK	619	348	357	358	358	364	364	366	370	374	379	383
CARAWAY	837	470	474	458	441	452	445	455	469	479	482	479
CHANDLER OAKS	726	573	535	528	511	500	498	498	497	499	498	502
DEEP WOOD	511	376	382	379	388	393	384	383	384	375	371	366
DOUBLE FILE TRAIL	913	576	591	609	629	649	687	711	726	738	752	762
ENGLAND	1,232	983	963	952	967	991	999	999	999	994	985	980
FERN BLUFF	948	599	582	576	586	587	620	620	623	619	618	620
FOREST CREEK	858	652	639	620	603	603	581	578	581	578	574	567
FOREST NORTH	600	337	348	353	369	362	369	377	385	396	406	416
GATTIS	900	611	625	662	675	671	705	713	719	728	741	751
GREAT OAKS	768	873	869	866	855	840	824	816	806	791	786	786
HERRINGTON	1,122	846	869	884	892	894	894	874	883	898	906	920
JOE LEE JOHNSON	1,122	814	790	770	769	728	700	697	684	679	675	668
JOLLYVILLE	782	632	635	658	666	673	664	661	659	649	639	629
LAUREL MOUNTAIN	898	807	824	816	805	790	770	760	757	754	754	750
LIVE OAK	711	390	395	393	385	391	403	411	407	411	407	399
OLD TOWN	874	598	600	607	604	609	622	618	615	621	618	617
POND SPRINGS	909	537	546	548	553	559	569	557	555	557	559	561
PURPLE SAGE	632	511	498	503	506	484	472	477	473	468	470	475
ROBERTSON	623	375	393	401	396	393	386	394	404	410	417	422
SOMMER	1,120	817	760	697	653	628	599	632	650	661	659	654
SPICEWOOD	932	686	652	644	641	632	658	650	649	648	648	646
TERAVISTA	1,210	834	845	852	834	839	823	809	817	823	820	824
UNION HILL	1,126	610	630	667	675	699	747	782	823	862	892	925
VOIGT	809	452	507	530	537	539	529	522	517	514	512	510
WELLS BRANCH	965	569	568	570	552	541	534	527	529	531	535	539
RED BUD	900	566	577	604	622	653	672	691	718	746	785	809
<b>ELEMENTARY SCHOOL TOTAL</b>	<b>30,256</b>	<b>21,143</b>	<b>21,191</b>	<b>21,207</b>	<b>21,185</b>	<b>21,189</b>	<b>21,279</b>	<b>21,298</b>	<b>21,433</b>	<b>21,492</b>	<b>21,568</b>	<b>21,636</b>
Elementary Absolute Growth		523	48	16	-22	4	90	19	135	59	76	68
Elementary Percent Growth		2.54%	0.23%	0.08%	-0.10%	0.02%	0.42%	0.09%	0.63%	0.28%	0.35%	0.32%



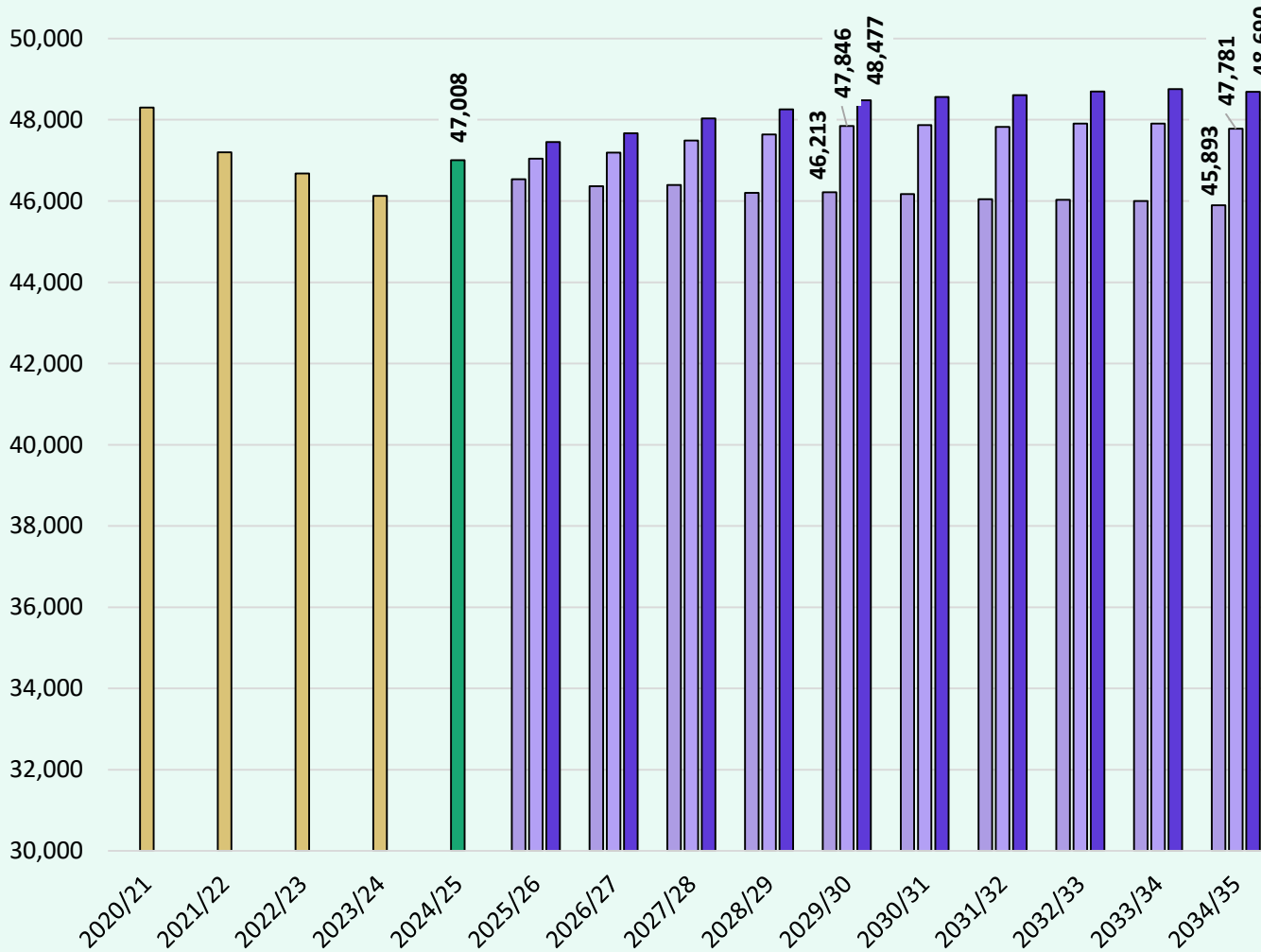
# Ten Year Forecast by Campus

Campus	TEA Compliant Capacity-Existing Facilities	Fall	ENROLLMENT PROJECTIONS									
		2024/25	2025/26	2026/27	2027/28	2028/29	2029/30	2030/31	2031/32	2032/33	2033/34	2034/35
CANYON VISTA MIDDLE	1,268	1,302	1,304	1,275	1,272	1,275	1,276	1,250	1,228	1,214	1,198	1,211
C.D. FULKES MIDDLE	985	607	619	668	717	785	791	792	787	791	783	776
CEDAR VALLEY MIDDLE	1,282	1,305	1,256	1,219	1,182	1,141	1,084	973	942	911	937	950
CHISHOLM TRAIL MIDDLE	981	731	802	816	838	856	856	851	824	840	839	847
DEERPARK MIDDLE	989	908	968	1,037	1,097	1,103	1,122	1,115	1,098	1,077	1,066	1,057
GRISHAM MIDDLE	777	612	617	628	666	705	693	683	652	656	645	645
HERNANDEZ MIDDLE	968	582	595	600	610	636	658	662	668	699	695	725
HOPEWELL MIDDLE	1,525	1,204	1,183	1,206	1,230	1,219	1,269	1,280	1,315	1,329	1,338	1,362
PEARSON RANCH MIDDLE	1,496	987	1,016	1,023	980	992	942	937	915	912	930	953
RIDGEVIEW MIDDLE SCHOOL	1,525	1,250	1,256	1,226	1,257	1,280	1,319	1,287	1,275	1,289	1,289	1,305
WALSH MIDDLE	1,541	1,205	1,236	1,200	1,173	1,112	1,057	1,010	989	1,008	1,008	1,012
<b>MIDDLE SCHOOL TOTAL</b>	<b>13,337</b>	<b>10,693</b>	<b>10,852</b>	<b>10,898</b>	<b>11,022</b>	<b>11,104</b>	<b>11,067</b>	<b>10,840</b>	<b>10,693</b>	<b>10,726</b>	<b>10,728</b>	<b>10,843</b>
Middle School Absolute Growth		273	159	46	124	82	-37	-227	-147	33	2	115
Middle School Percent Growth		2.62%	1.49%	0.42%	1.14%	0.74%	-0.33%	-2.05%	-1.36%	0.31%	0.02%	1.07%
CEDAR RIDGE HIGH SCHOOL	3,025	2,707	2,680	2,698	2,717	2,701	2,727	2,835	2,897	2,971	3,021	2,976
MCNEIL HIGH SCHOOL	2,366	2,633	2,685	2,730	2,838	2,914	3,011	3,058	3,043	3,036	2,958	2,908
ROUND ROCK HIGH SCHOOL	5,337	3,806	3,754	3,802	3,877	3,890	3,937	3,904	3,810	3,699	3,581	3,445
STONY POINT HIGH SCHOOL	2,556	2,500	2,399	2,344	2,343	2,387	2,348	2,439	2,426	2,448	2,522	2,520
WESTWOOD HIGH SCHOOL	2,655	2,848	2,804	2,832	2,831	2,773	2,799	2,821	2,845	2,859	2,849	2,775
SUCCESS HIGH SCHOOL	525	220	220	220	220	220	220	220	220	220	220	220
EARLY COLLEGE HIGH SCHOOL		363	363	363	363	363	363	363	363	363	363	363
<b>HIGH SCHOOL TOTAL</b>	<b>16,464</b>	<b>15,077</b>	<b>14,905</b>	<b>14,989</b>	<b>15,189</b>	<b>15,248</b>	<b>15,405</b>	<b>15,640</b>	<b>15,604</b>	<b>15,596</b>	<b>15,514</b>	<b>15,207</b>
High School Absolute Growth		104	-172	84	200	59	157	235	-36	-8	-82	-307
High School Percent Growth		0.69%	-1.14%	0.56%	1.33%	0.39%	1.03%	1.53%	-0.23%	-0.05%	-0.53%	-1.98%
ELEMENTARY DAEP	75	6	6	6	6	6	6	6	6	6	6	6
ROUND ROCK OPPORT CTR DAEP	522	76	76	76	76	76	76	76	76	76	76	76
WILLIAMSON CO J J A E P	0	2	2	2	2	2	2	2	2	2	2	2
WM S LOTT JUVENILE CTR	0	11	11	11	11	11	11	11	11	11	11	11
<b>ALTERNATIVE SCHOOL TOTAL</b>	<b>597</b>	<b>95</b>	<b>95</b>	<b>95</b>	<b>95</b>	<b>95</b>	<b>95</b>	<b>95</b>	<b>95</b>	<b>95</b>	<b>95</b>	<b>95</b>
<b>DISTRICT TOTALS</b>	<b>60,654</b>	<b>47,008</b>	<b>47,043</b>	<b>47,189</b>	<b>47,491</b>	<b>47,636</b>	<b>47,846</b>	<b>47,873</b>	<b>47,825</b>	<b>47,909</b>	<b>47,905</b>	<b>47,781</b>
District Absolute Growth		882	35	146	302	145	210	27	-48	84	-4	-124
District Percent Growth		1.9%	0.1%	0.3%	0.6%	0.3%	0.4%	0.1%	-0.1%	0.2%	0.0%	-0.3%



# Key Takeaways

### Round Rock ISDs Enrollment Forecast



- District marketing efforts have increased both in district enrollment, as well as out of district transfer in enrollment resulting in an overall district increase of 882 students from the previous 2023-24 school year
- The district has 16 actively building subdivisions with nearly 1,000 lots available to build on. Groundwork is underway on more than 350 lots within 3 subdivisions
- Round Rock ISD has 10 future subdivisions with nearly 2,400 lots in the planning stages
- There are 3,000 multi-family units currently under construction across the district with almost 9,900 future units in various stages of planning
- Round Rock ISD’s enrollment is forecasted to remain in a range between 46,200 and 48,500 students over the next several years and with ongoing marketing efforts and increases in the elementary grade enrollment numbers over the next several years enrollment could be at the higher end of the range.



# Ten Year Forecast by Grade Level - Low

Year (Oct.)	EE	PK	K	1st	2nd	3rd	4th	5th	6th	7th	8th	9th	10th	11th	12th	Total	Growth	% Growth
2020/21	291	754	2,927	3,291	3,453	3,520	3,535	3,631	3,782	3,848	3,875	3,999	3,949	3,749	3,698	48,302		
2021/22	306	939	3,065	3,139	3,310	3,475	3,463	3,476	3,566	3,632	3,685	4,025	3,761	3,771	3,587	47,200	-1,102	-2.28%
2022/23	441	1,019	2,956	3,173	3,151	3,325	3,462	3,417	3,462	3,520	3,644	3,980	3,890	3,673	3,567	46,680	-520	-1.10%
2023/24	267	1,256	2,784	3,056	3,246	3,236	3,334	3,442	3,441	3,458	3,544	3,876	3,856	3,748	3,582	46,126	-554	-1.19%
2024/25	348	1,480	2,853	3,028	3,208	3,431	3,359	3,442	3,599	3,554	3,565	3,915	3,805	3,752	3,669	47,008	882	1.91%
2025/26	348	1,408	2,787	3,007	3,086	3,296	3,506	3,404	3,494	3,647	3,611	3,813	3,807	3,663	3,663	46,540	-468	-1.00%
2026/27	348	1,418	2,862	2,924	3,089	3,174	3,367	3,548	3,479	3,554	3,715	3,884	3,717	3,687	3,598	46,364	-176	-0.38%
2027/28	348	1,423	2,865	3,029	3,008	3,182	3,273	3,437	3,626	3,555	3,634	3,990	3,799	3,600	3,624	46,393	29	0.06%
2028/29	348	1,446	2,903	2,990	3,103	3,088	3,226	3,315	3,490	3,687	3,621	3,891	3,890	3,674	3,529	46,201	-192	-0.41%
2029/30	348	1,460	2,938	3,027	3,077	3,185	3,163	3,282	3,360	3,558	3,760	3,883	3,798	3,763	3,611	46,213	12	0.03%
2030/31	348	1,471	2,973	3,061	3,113	3,170	3,256	3,220	3,332	3,423	3,630	4,036	3,789	3,676	3,676	46,174	-39	-0.08%
2031/32	348	1,484	2,994	3,104	3,144	3,202	3,227	3,307	3,268	3,393	3,490	3,894	3,936	3,665	3,592	46,048	-126	-0.27%
2032/33	348	1,498	3,015	3,117	3,186	3,234	3,274	3,278	3,356	3,328	3,461	3,743	3,798	3,805	3,587	46,028	-20	-0.04%
2033/34	348	1,510	3,030	3,142	3,202	3,281	3,300	3,328	3,297	3,419	3,394	3,713	3,652	3,672	3,714	46,002	-26	-0.06%
2034/35	348	1,522	3,056	3,155	3,221	3,283	3,348	3,352	3,383	3,359	3,485	3,641	3,620	3,533	3,587	45,893	-109	-0.24%

Yellow box = largest grade per year  
Green box = second largest grade per year



# Ten Year Forecast by Elementary Campus - Low

Campus	TEA Compliant Capacity- Existing Facilities	Fall	ENROLLMENT PROJECTIONS									
		2024/25	2025/26	2026/27	2027/28	2028/29	2029/30	2030/31	2031/32	2032/33	2033/34	2034/35
ANDERSON MILL	696	574	586	574	574	578	592	591	596	591	600	604
BERKMAN	662	484	493	508	515	513	503	497	492	487	488	485
BLACKLAND PRAIRIE	1,037	795	773	770	741	726	711	703	705	705	711	720
BLUEBONNET	612	407	408	409	412	398	399	401	401	402	400	398
BRUSHY CREEK	726	467	435	393	376	366	358	365	378	380	386	389
CACTUS RANCH	900	691	659	626	621	609	623	623	618	616	620	621
CALDWELL HEIGHTS	1,056	629	593	579	569	572	562	563	568	574	576	577
CALLISON	920	654	670	671	676	666	690	683	685	677	683	688
CANYON CREEK	619	348	354	352	346	342	334	331	331	333	342	347
CARAWAY	837	470	465	438	411	412	394	397	404	409	413	411
CHANDLER OAKS	726	573	528	516	494	478	471	468	470	471	467	467
DEEP WOOD	511	376	377	374	384	389	384	392	400	395	390	384
DOUBLE FILE TRAIL	913	576	579	588	597	604	626	635	643	643	640	632
ENGLAND	1,232	983	967	959	976	1,003	1,038	1,064	1,089	1,108	1,126	1,141
FERN BLUFF	948	599	575	567	577	586	637	676	703	719	729	730
FOREST CREEK	858	652	638	615	594	586	555	549	552	550	548	546
FOREST NORTH	600	337	342	345	361	349	355	361	366	370	373	379
GATTIS	900	611	609	642	662	666	711	730	757	787	813	840
GREAT OAKS	768	873	846	838	811	817	808	793	795	782	771	759
HERRINGTON	1,122	846	871	889	900	904	907	892	876	860	837	817
JOE LEE JOHNSON	1,122	814	778	757	759	716	695	691	681	669	667	661
JOLLYVILLE	782	632	583	586	573	550	530	523	514	508	503	500
LAUREL MOUNTAIN	898	807	808	800	787	769	745	747	749	753	761	769
LIVE OAK	711	390	376	362	350	344	350	355	350	354	355	351
OLD TOWN	874	598	598	611	606	605	614	622	632	639	648	654
POND SPRINGS	909	537	543	548	555	563	575	566	563	566	569	572
PURPLE SAGE	632	511	499	504	507	484	475	484	487	491	503	518
ROBERTSON	623	375	380	386	377	369	364	369	373	375	381	386
SOMMER	1,120	817	759	701	652	611	580	607	617	628	645	654
SPICEWOOD	932	686	650	637	622	602	615	606	594	592	589	587
TERAVISTA	1,210	834	841	856	844	861	859	865	896	924	944	964
UNION HILL	1,126	610	614	648	652	674	713	742	779	817	852	889
VOIGT	809	452	505	520	529	531	521	518	515	518	518	520
WELLS BRANCH	965	569	570	575	559	549	545	541	544	548	555	560
RED BUD	900	566	564	580	590	621	635	656	681	703	732	759
<b>ELEMENTARY SCHOOL TOTAL</b>	<b>30,256</b>	<b>21,143</b>	<b>20,836</b>	<b>20,724</b>	<b>20,559</b>	<b>20,413</b>	<b>20,474</b>	<b>20,606</b>	<b>20,804</b>	<b>20,944</b>	<b>21,135</b>	<b>21,279</b>
Elementary Absolute Growth		523	-307	-112	-165	-146	61	132	198	140	191	144
Elementary Percent Growth		2.54%	-1.45%	-0.54%	-0.80%	-0.71%	0.30%	0.64%	0.96%	0.67%	0.91%	0.68%



# Ten Year Forecast by Secondary Campus - Low

Campus	TEA Compliant Capacity-Existing Facilities	Fall	ENROLLMENT PROJECTIONS									
		2024/25	2025/26	2026/27	2027/28	2028/29	2029/30	2030/31	2031/32	2032/33	2033/34	2034/35
CANYON VISTA MIDDLE	1,268	1,302	1,295	1,260	1,253	1,234	1,220	1,164	1,127	1,086	1,071	1,060
C.D. FULKES MIDDLE	985	607	609	663	706	757	749	747	744	757	742	734
CEDAR VALLEY MIDDLE	1,282	1,305	1,237	1,183	1,140	1,091	1,038	942	898	862	867	890
CHISHOLM TRAIL MIDDLE	981	731	792	804	825	842	829	808	781	810	832	861
DEERPARK MIDDLE	989	908	951	1,016	1,068	1,061	1,058	1,043	1,021	1,006	986	969
GRISHAM MIDDLE	777	612	615	624	660	689	680	668	640	642	628	626
HERNANDEZ MIDDLE	968	582	585	583	584	601	613	611	605	625	607	627
HOPEWELL MIDDLE	1,525	1,204	1,182	1,196	1,210	1,194	1,237	1,233	1,257	1,265	1,278	1,306
PEARSON RANCH MIDDLE	1,496	987	1,007	1,012	968	970	914	909	887	902	921	949
RIDGEVIEW MIDDLE SCHOOL	1,525	1,250	1,232	1,198	1,217	1,228	1,258	1,223	1,190	1,178	1,169	1,186
WALSH MIDDLE	1,541	1,205	1,222	1,184	1,159	1,106	1,057	1,012	976	987	984	994
<b>MIDDLE SCHOOL TOTAL</b>	<b>13,337</b>	<b>10,693</b>	<b>10,727</b>	<b>10,723</b>	<b>10,790</b>	<b>10,773</b>	<b>10,653</b>	<b>10,360</b>	<b>10,126</b>	<b>10,120</b>	<b>10,085</b>	<b>10,202</b>
Middle School Absolute Growth		273	34	-4	67	-17	-120	-293	-234	-6	-35	117
Middle School Percent Growth		2.62%	0.32%	-0.04%	0.62%	-0.16%	-1.11%	-2.75%	-2.26%	-0.06%	-0.35%	1.16%
CEDAR RIDGE HIGH SCHOOL	3,025	2,707	2,675	2,663	2,665	2,629	2,642	2,728	2,761	2,801	2,831	2,762
MCNEIL HIGH SCHOOL	2,366	2,633	2,674	2,687	2,770	2,822	2,899	2,920	2,897	2,849	2,765	2,713
ROUND ROCK HIGH SCHOOL	5,337	3,806	3,739	3,737	3,811	3,795	3,811	3,765	3,677	3,545	3,426	3,286
STONY POINT HIGH SCHOOL	2,556	2,500	2,396	2,325	2,313	2,341	2,294	2,359	2,335	2,336	2,385	2,362
WESTWOOD HIGH SCHOOL	2,655	2,848	2,815	2,827	2,807	2,750	2,762	2,758	2,770	2,755	2,697	2,611
SUCCESS HIGH SCHOOL	525	220	220	220	220	220	220	220	220	220	220	220
EARLY COLLEGE HIGH SCHOOL		363	363	363	363	363	363	363	363	363	363	363
<b>HIGH SCHOOL TOTAL</b>	<b>16,464</b>	<b>15,077</b>	<b>14,882</b>	<b>14,822</b>	<b>14,949</b>	<b>14,920</b>	<b>14,991</b>	<b>15,113</b>	<b>15,023</b>	<b>14,869</b>	<b>14,687</b>	<b>14,317</b>
High School Absolute Growth		104	-195	-60	127	-29	71	122	-90	-154	-182	-370
High School Percent Growth		0.69%	-1.29%	-0.40%	0.86%	-0.19%	0.48%	0.81%	-0.60%	-1.03%	-1.22%	-2.52%
ELEMENTARY DAEP	75	6	6	6	6	6	6	6	6	6	6	6
ROUND ROCK OPPORT CTR DAEP	522	76	76	76	76	76	76	76	76	76	76	76
WILLIAMSON CO J J A E P	0	2	2	2	2	2	2	2	2	2	2	2
WM S LOTT JUVENILE CTR	0	11	11	11	11	11	11	11	11	11	11	11
<b>ALTERNATIVE SCHOOL TOTAL</b>	<b>597</b>	<b>95</b>	<b>95</b>	<b>95</b>	<b>95</b>	<b>95</b>	<b>95</b>	<b>95</b>	<b>95</b>	<b>95</b>	<b>95</b>	<b>95</b>
<b>DISTRICT TOTALS</b>	<b>60,654</b>	<b>47,008</b>	<b>46,540</b>	<b>46,364</b>	<b>46,393</b>	<b>46,201</b>	<b>46,213</b>	<b>46,174</b>	<b>46,048</b>	<b>46,028</b>	<b>46,002</b>	<b>45,893</b>
District Absolute Growth		882	-468	-176	29	-192	12	-39	-126	-20	-26	-109
District Percent Growth		1.9%	-1.0%	-0.4%	0.1%	-0.4%	0.0%	-0.1%	-0.3%	0.0%	-0.1%	-0.2%



# Ten Year Forecast by Grade Level - High

Year (Oct.)	EE	PK	K	1st	2nd	3rd	4th	5th	6th	7th	8th	9th	10th	11th	12th	Total	Growth	% Growth
2020/21	291	754	2,927	3,291	3,453	3,520	3,535	3,631	3,782	3,848	3,875	3,999	3,949	3,749	3,698	48,302		
2021/22	306	939	3,065	3,139	3,310	3,475	3,463	3,476	3,566	3,632	3,685	4,025	3,761	3,771	3,587	47,200	-1,102	-2.28%
2022/23	441	1,019	2,956	3,173	3,151	3,325	3,462	3,417	3,462	3,520	3,644	3,980	3,890	3,673	3,567	46,680	-520	-1.10%
2023/24	267	1,256	2,784	3,056	3,246	3,236	3,334	3,442	3,441	3,458	3,544	3,876	3,856	3,748	3,582	46,126	-554	-1.19%
2024/25	348	1,480	2,853	3,028	3,208	3,431	3,359	3,442	3,599	3,554	3,565	3,915	3,805	3,752	3,669	47,008	882	1.91%
2025/26	348	1,509	2,882	3,098	3,185	3,374	3,570	3,473	3,581	3,715	3,670	3,926	3,807	3,710	3,601	47,449	441	0.94%
2026/27	348	1,523	2,976	3,058	3,202	3,297	3,462	3,634	3,563	3,664	3,796	3,956	3,827	3,703	3,659	47,668	219	0.46%
2027/28	348	1,539	2,980	3,186	3,172	3,319	3,419	3,560	3,736	3,669	3,763	4,087	3,869	3,727	3,659	48,033	365	0.77%
2028/29	348	1,559	3,025	3,169	3,288	3,273	3,382	3,489	3,643	3,841	3,761	4,046	3,985	3,769	3,680	48,258	225	0.47%
2029/30	348	1,582	3,051	3,188	3,273	3,387	3,368	3,458	3,554	3,744	3,933	4,042	3,948	3,878	3,723	48,477	219	0.45%
2030/31	348	1,595	3,012	3,208	3,284	3,371	3,467	3,432	3,529	3,654	3,840	4,231	3,944	3,845	3,806	48,566	89	0.18%
2031/32	348	1,610	3,038	3,178	3,312	3,387	3,451	3,541	3,503	3,626	3,745	4,128	4,126	3,840	3,773	48,606	40	0.08%
2032/33	348	1,623	3,053	3,208	3,276	3,415	3,478	3,531	3,614	3,600	3,716	4,020	4,026	4,013	3,776	48,697	91	0.19%
2033/34	348	1,639	3,080	3,216	3,305	3,380	3,496	3,552	3,570	3,715	3,689	3,993	3,921	3,916	3,933	48,753	56	0.11%
2034/35	348	1,641	3,098	3,253	3,304	3,401	3,467	3,573	3,626	3,667	3,804	3,962	3,893	3,812	3,841	48,690	-63	-0.13%

Yellow box = largest grade per year  
Green box = second largest grade per year



# Ten Year Forecast by Elementary Campus - High

Campus	TEA Compliant Capacity- Existing Facilities	Fall	ENROLLMENT PROJECTIONS									
		2024/25	2025/26	2026/27	2027/28	2028/29	2029/30	2030/31	2031/32	2032/33	2033/34	2034/35
ANDERSON MILL	696	574	610	599	602	607	622	608	617	611	613	617
BERKMAN	662	484	504	521	528	530	523	516	511	508	509	506
BLACKLAND PRAIRIE	1,037	795	804	813	802	810	812	816	825	820	820	818
BLUEBONNET	612	407	423	426	435	429	432	418	424	426	421	423
BRUSHY CREEK	726	467	466	440	433	429	428	439	443	437	437	434
CACTUS RANCH	900	691	671	642	639	630	648	654	644	636	635	627
CALDWELL HEIGHTS	1,056	629	633	629	631	647	647	645	647	643	644	643
CALLISON	920	654	680	697	719	720	737	727	729	718	715	720
CANYON CREEK	619	348	362	363	363	369	369	372	376	380	385	389
CARAWAY	837	470	479	463	447	457	450	461	476	487	491	488
CHANDLER OAKS	726	573	542	535	518	506	503	502	500	501	499	502
DEEP WOOD	511	376	385	383	393	399	392	394	398	389	385	380
DOUBLE FILE TRAIL	913	576	595	614	635	656	694	718	734	746	760	770
ENGLAND	1,232	983	975	966	982	1,007	1,017	1,018	1,018	1,013	1,004	998
FERN BLUFF	948	599	588	582	593	593	626	626	629	625	624	626
FOREST CREEK	858	652	648	631	615	616	592	590	593	590	586	579
FOREST NORTH	600	337	352	358	375	367	375	383	392	403	413	423
GATTIS	900	611	633	671	684	680	713	722	727	736	747	758
GREAT OAKS	768	873	879	877	868	852	837	830	820	804	799	799
HERRINGTON	1,122	846	877	894	905	908	910	892	902	919	929	947
JOE LEE JOHNSON	1,122	814	799	780	781	739	712	710	696	691	686	679
JOLLYVILLE	782	632	642	667	676	683	674	673	671	661	651	641
LAUREL MOUNTAIN	898	807	832	825	816	801	781	772	770	768	767	763
LIVE OAK	711	390	399	397	390	396	409	418	414	417	413	405
OLD TOWN	874	598	606	614	612	617	629	625	621	627	624	623
POND SPRINGS	909	537	552	557	564	571	582	571	567	569	571	573
PURPLE SAGE	632	511	505	511	516	494	484	490	485	480	482	487
ROBERTSON	623	375	400	408	404	402	396	401	411	417	423	428
SOMMER	1,120	817	768	708	666	641	615	651	672	684	684	678
SPICEWOOD	932	686	661	654	652	642	669	663	662	659	658	655
TERAVISTA	1,210	834	855	864	847	853	838	826	836	843	841	846
UNION HILL	1,126	610	638	676	685	711	761	799	842	885	921	956
VOIGT	809	452	511	535	543	545	535	528	523	520	517	515
WELLS BRANCH	965	569	575	580	563	552	547	541	543	545	550	554
RED BUD	900	566	584	614	635	668	690	712	741	768	806	829
<b>ELEMENTARY SCHOOL TOTAL</b>	<b>30,256</b>	<b>21,143</b>	<b>21,433</b>	<b>21,494</b>	<b>21,517</b>	<b>21,527</b>	<b>21,649</b>	<b>21,711</b>	<b>21,859</b>	<b>21,926</b>	<b>22,010</b>	<b>22,079</b>
Elementary Absolute Growth		523	290	61	23	10	122	62	148	67	84	69
Elementary Percent Growth		2.54%	1.37%	0.28%	0.11%	0.05%	0.57%	0.29%	0.68%	0.31%	0.38%	0.31%



# Ten Year Forecast by Secondary Campus - High

Campus	TEA Compliant Capacity-Existing Facilities	Fall	ENROLLMENT PROJECTIONS									
		2024/25	2025/26	2026/27	2027/28	2028/29	2029/30	2030/31	2031/32	2032/33	2033/34	2034/35
CANYON VISTA MIDDLE	1,268	1,302	1,314	1,286	1,284	1,287	1,292	1,268	1,244	1,231	1,221	1,234
C.D. FULKES MIDDLE	985	607	624	673	722	789	796	800	797	804	796	790
CEDAR VALLEY MIDDLE	1,282	1,305	1,266	1,229	1,195	1,154	1,099	988	955	927	957	975
CHISHOLM TRAIL MIDDLE	981	731	809	825	849	866	867	862	833	850	854	862
DEERPARK MIDDLE	989	908	977	1,046	1,108	1,115	1,137	1,131	1,116	1,098	1,092	1,082
GRISHAM MIDDLE	777	612	622	635	676	713	702	692	663	669	660	659
HERNANDEZ MIDDLE	968	582	600	606	617	643	666	675	682	714	708	737
HOPEWELL MIDDLE	1,525	1,204	1,193	1,216	1,242	1,231	1,282	1,296	1,333	1,354	1,371	1,397
PEARSON RANCH MIDDLE	1,496	987	1,023	1,031	989	1,000	953	952	928	929	950	975
RIDGEVIEW MIDDLE SCHOOL	1,525	1,250	1,266	1,239	1,274	1,295	1,339	1,307	1,296	1,307	1,315	1,330
WALSH MIDDLE	1,541	1,205	1,247	1,212	1,187	1,127	1,073	1,027	1,002	1,022	1,025	1,031
<b>MIDDLE SCHOOL TOTAL</b>	<b>13,337</b>	<b>10,693</b>	<b>10,941</b>	<b>10,998</b>	<b>11,143</b>	<b>11,220</b>	<b>11,206</b>	<b>10,998</b>	<b>10,849</b>	<b>10,905</b>	<b>10,949</b>	<b>11,072</b>
Middle School Absolute Growth		273	248	57	145	77	-14	-208	-149	56	44	123
Middle School Percent Growth		2.62%	2.32%	0.52%	1.32%	0.69%	-0.12%	-1.86%	-1.35%	0.52%	0.40%	1.12%
CEDAR RIDGE HIGH SCHOOL	3,025	2,707	2,695	2,715	2,732	2,732	2,750	2,859	2,933	3,007	3,057	3,022
MCNEIL HIGH SCHOOL	2,366	2,633	2,700	2,747	2,855	2,946	3,031	3,078	3,081	3,067	2,994	2,957
ROUND ROCK HIGH SCHOOL	5,337	3,806	3,772	3,826	3,900	3,935	3,972	3,939	3,866	3,745	3,627	3,498
STONY POINT HIGH SCHOOL	2,556	2,500	2,412	2,360	2,359	2,414	2,369	2,459	2,459	2,476	2,555	2,564
WESTWOOD HIGH SCHOOL	2,655	2,848	2,818	2,850	2,849	2,806	2,822	2,844	2,881	2,893	2,883	2,820
SUCCESS HIGH SCHOOL	525	220	220	220	220	220	220	220	220	220	220	220
EARLY COLLEGE HIGH SCHOOL		363	363	363	363	363	363	363	363	363	363	363
<b>HIGH SCHOOL TOTAL</b>	<b>16,464</b>	<b>15,077</b>	<b>14,980</b>	<b>15,081</b>	<b>15,278</b>	<b>15,416</b>	<b>15,527</b>	<b>15,762</b>	<b>15,803</b>	<b>15,771</b>	<b>15,699</b>	<b>15,444</b>
High School Absolute Growth		104	-97	101	197	138	111	235	41	-32	-72	-255
High School Percent Growth		0.69%	-0.64%	0.67%	1.31%	0.90%	0.72%	1.51%	0.26%	-0.20%	-0.46%	-1.62%
ELEMENTARY DAEP	75	6	6	6	6	6	6	6	6	6	6	6
ROUND ROCK OPPORT CTR DAEP	522	76	76	76	76	76	76	76	76	76	76	76
WILLIAMSON CO J J A E P	0	2	2	2	2	2	2	2	2	2	2	2
WM S LOTT JUVENILE CTR	0	11	11	11	11	11	11	11	11	11	11	11
<b>ALTERNATIVE SCHOOL TOTAL</b>	<b>597</b>	<b>95</b>	<b>95</b>	<b>95</b>	<b>95</b>	<b>95</b>	<b>95</b>	<b>95</b>	<b>95</b>	<b>95</b>	<b>95</b>	<b>95</b>
<b>DISTRICT TOTALS</b>	<b>60,654</b>	<b>47,008</b>	<b>47,449</b>	<b>47,668</b>	<b>48,033</b>	<b>48,258</b>	<b>48,477</b>	<b>48,566</b>	<b>48,606</b>	<b>48,697</b>	<b>48,753</b>	<b>48,690</b>
District Absolute Growth		882	441	219	365	225	219	89	40	91	56	-63
District Percent Growth		1.9%	0.9%	0.5%	0.8%	0.5%	0.5%	0.2%	0.1%	0.2%	0.1%	-0.1%

# Round Rock I.S.D.

May 2025 Board Meeting

Todd Patch, Executive Vice President  
Erin Roman, Executive Team Lead

# Introduction

- **Today's Focus:**

- 2025 Benefit Plans Review
- Financial Update of Self-Funded (RRISD- Funded) Health Plan
- Local District Benchmarks

- **District Goals for Benefits Program:**

- Provide plan choice for employees
- Inform/educate employees on how to most efficiently use their health insurance
- Continue to address increasing trend/cost for the district and employees by finding efficiencies in plans

# RRISD Self-Funded Medical & Pharmacy Plan

- **What does self-funded plan mean?**

- RRISD pays healthcare claims and fixed monthly expenses (claims administration, stop loss insurance for large claim protection).
- RRISD retains surpluses or pays deficits based on actual claims/cost.

- **Benefits of Self-Funding:**

- **Most efficient way to fund health plan over long term.**

- Significantly reduces carrier/administrator profit margin
- Lower administrative fees
- Set your own stop loss level and bid for lowest cost each year versus Fully Insured carrier setting pooling point and cost to cover claims past that pooling point
- Opportunity to use plan surpluses in good claim years to offset bad claim years

- **Carrier/network stability**

- **Allows more plan flexibility and control**

- **Allows RRISD to implement additional strategies to help improve outcomes, examples:**

- Carve-out Pharmacy
- Lantern (outpatient surgery program)
- Enhanced wellness programs

# 2025 Medical Plan & Contribution Changes

NEW PLAN!

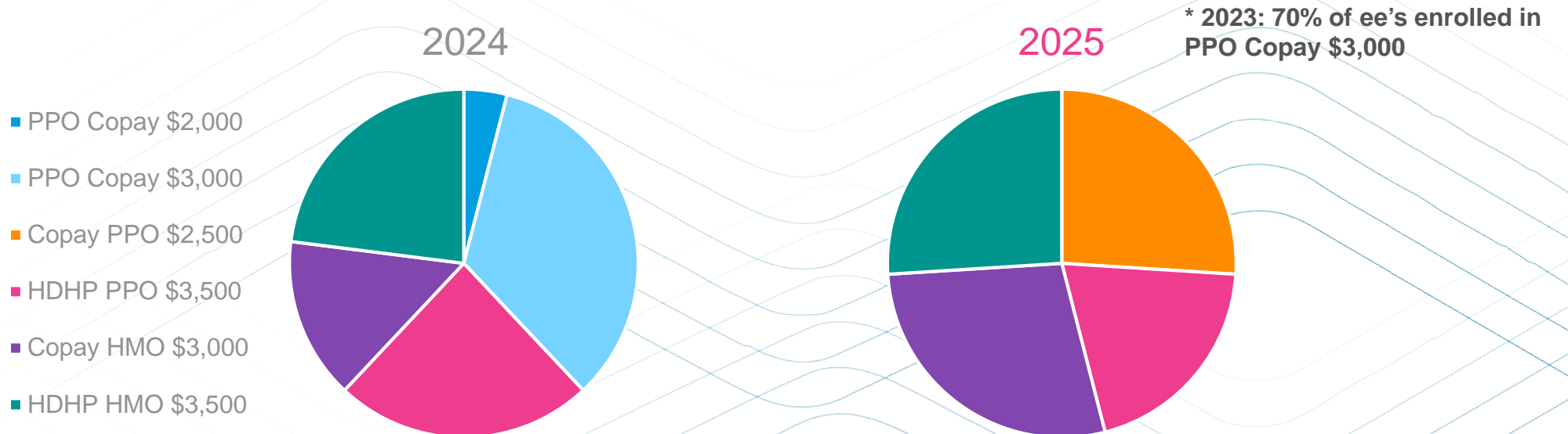
Plans no longer offered

	HDHP HMO \$3,500		COPAY HMO \$3,000		HDHP PPO \$3,500		COPAY PPO \$2,500	PPO Copay \$3,000	PPO Copay \$2,000
Network	Blue Essentials		Blue Essentials		Blue Choice		Blue Choice	Blue Choice	Blue Choice (PPO)
Deductible (Individual)	\$3,500		\$3,000		\$3,500		\$2,500	\$3,000	\$2,000
Deductible (Family)	\$9,000		\$7,500		\$9,000		\$5,000	\$7,500	\$7,500
OOP Max (Individual)	\$6,500		\$7,150		\$6,500		\$7,000	\$7,150	\$5,000
OOP Max (Family)	\$12,000		\$14,300		\$12,000		\$14,000	\$14,300	\$10,000
PCP Copay	30%*		\$35 copay		30%*		\$35 copay	\$35 copay	\$30 copay
Specialist Copay	30%*		\$70 copay		30%*		\$70 copay	\$70 copay	\$60 copay
Emergency Room	30%*		\$250 + 30%*		30%*		\$250 + 30%*	\$250 + 30%*	\$250 + 25%*
Urgent Care	30%*		\$75 copay		30%*		\$75 copay	\$75 copay	\$75 copay
Pharmacy	<b>Pharmacy Administrator change from Express Scripts to BCBS/Prime Therapeutics</b>								
Tier 1	30%*		\$15		30%*		\$15	\$15	\$15
Tier 2	30%*		35% (\$45 -\$80)		30%*		35% (\$45 -\$80)	35% (\$45 -\$80)	35% (\$45 -\$80)
Tier 3	30%*		40% (\$75 - \$120)		30%*		40% (\$75 - \$120)	40% (\$75 - \$120)	40% (\$75 - \$120)
Specialty	30%*		20% (\$250)		30%*		20% (\$250)	20% (\$250)	20% (\$250)
<b>Employee Payroll Deductions</b>	<b>2024</b>	<b>2025</b>	<b>2025</b>	<b>2025</b>	<b>2024</b>	<b>2025</b>	<b>2025</b>	<b>2024</b>	<b>2024</b>
Employee Only	\$0	\$0	\$40	\$50	\$30	\$75	\$180	\$80	\$200
Employee + Spouse	\$512	\$563	\$620	\$650	\$563	\$682	\$772	\$689	\$908
Employee + Children	\$359	\$395	\$451	\$457	\$395	\$496	\$638	\$501	\$751
Employee + Family	\$797	\$877	\$931	\$1,013	\$877	\$1,024	\$1,277	\$1,033	\$1,502

# 2025 Enrollment Migration

## Medical Plans

	HDHP HMO \$3,500		COPAY HMO \$3,000		HDHP PPO \$3,500		NEW PLAN! COPAY PPO \$2,500	Plans no longer offered	
	2024	2025	2025	2025	2024	2025	2025	PPO Copay \$3,000*	PPO Copay \$2,000
Employee Only	1,065	1,164	609	1,141	1,050	1,060	687	1,141	166
Employee + Spouse	10	13	13	22	13	21	46	55	12
Employee + Children	71	94	122	217	134	160	204	376	23
Employee + Family	33	33	37	60	53	67	111	151	11
<b>Total Employee Count</b>	<b>1,179</b>	<b>1,304</b>	<b>781</b>	<b>1,440</b>	<b>1,250</b>	<b>1,308</b>	<b>1,048</b>	<b>1,723</b>	<b>212</b>
<b>% Employee Enrolled</b>	<b>23%</b>	<b>26%</b>	<b>15%</b>	<b>28%</b>	<b>24%</b>	<b>20%</b>	<b>26%</b>	<b>34%*</b>	<b>4%</b>



# Health Plan Funding & Impacting Future Cost

## Who contributes to the Health Plan Fund?

- District – currently \$466 per participating employee per month
- Employees – payroll deductions based on plan enrollment does not include copays, deductibles and coinsurance

## How can the District impact cost projections?

- Increase District Funding
- Increase Employee Contributions
- Change plan design, network, add more controls to access care, etc.

# District Health Plan Funding

## Historical Review

Plan Year	District PEPM Budget	PEPM % Increase from PY	PY Surplus/ Deficit	RRISD Claims Trend from PY	Market Trend for Groups*
2016	\$370	0%	Deficit	-2.0%	6.5%
2017	\$370	0%	Deficit	4.2%	5.5%
2018	\$370	0%	Deficit	2.1%	5.7%
2019	\$370	0%	Surplus	-7.2%	5.7%
2020	\$400	8.0%	Surplus	11.5%	6.0%
2021	\$415	3.8%	Deficit	18.1%	7.0%
2022	\$425	2.4%	Deficit	8.4%	5.5%
2023	\$466	9.6%	Deficit	-1.9%	8.0%
2024	\$466	0%	Deficit	8.0%	7.5%
<i>Average:</i>				4.6%	6.4%

Unusually low year

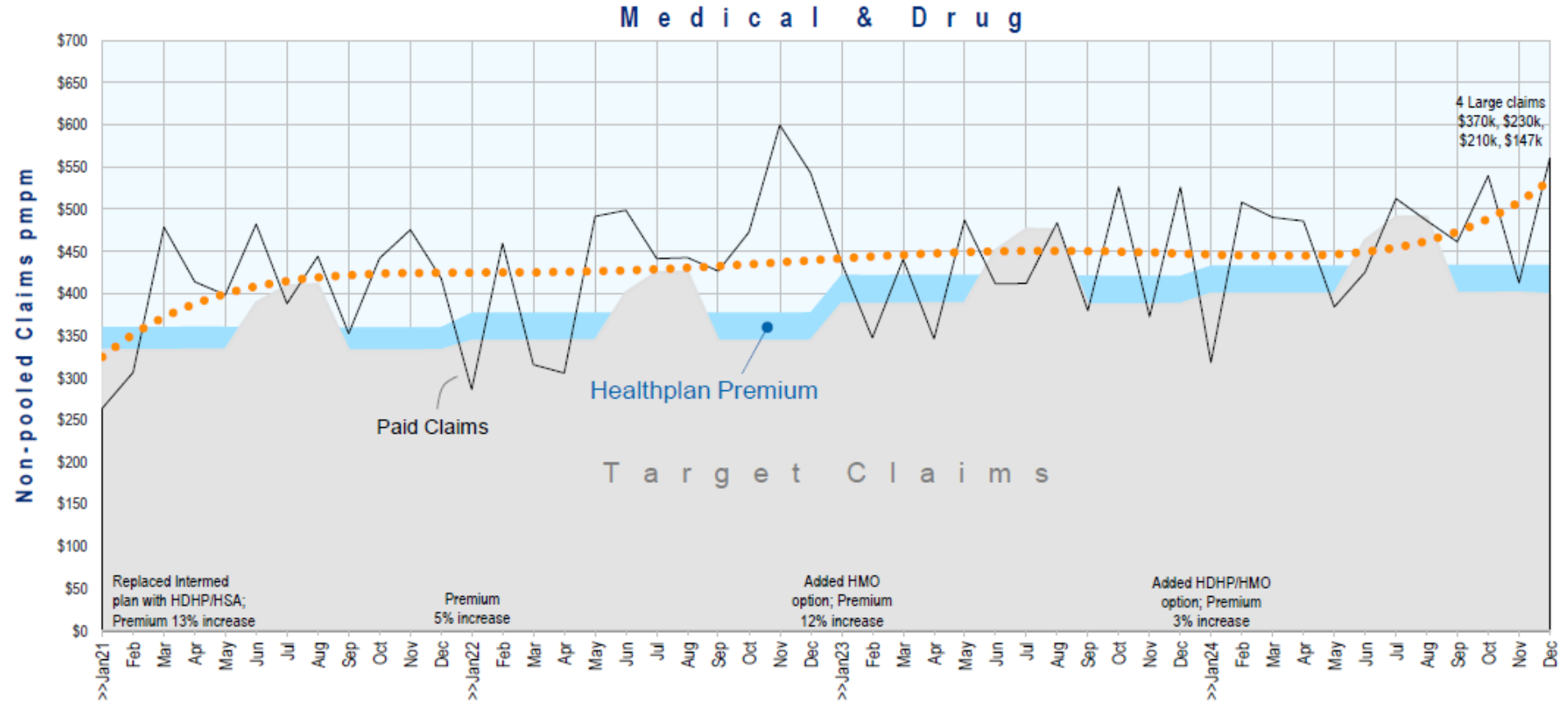
\* Source: Pricewaterhouse Coopers (PwC) Health Research Institute medical cost trends report, website: <https://www.pwc.com/us/en/industries/health-industries/library/behind-the-numbers.html>

# Claims Trend - PMPM

2024 Annual iCAF Report

## Summary Stats:

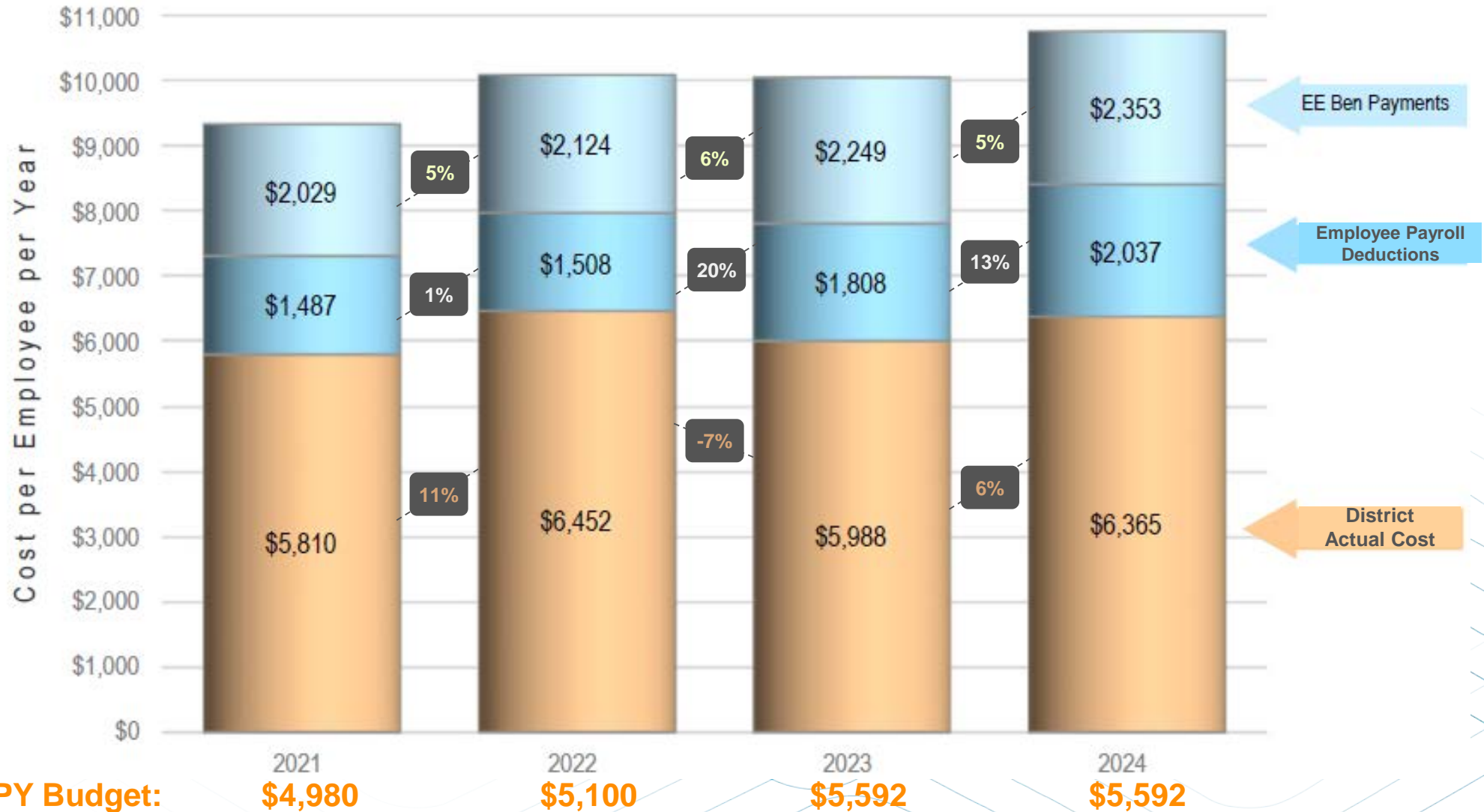
- Paid Claim Cost (pmpm) has increased **5.9%** since 2022.
- Average claims trend over last 3 years is **4.8%**.
- District budget has not increased with projected annual trends.



# Bottom Line – Medical & Drug

2024 Annual iCAF Report

“EE Ben Payments” = what plan members pay out-of-pocket for copays, deductibles and coinsurance.



**District PEPY Budget:**

# High Cost Claim Impact

## 2024 Annual iCAF Report

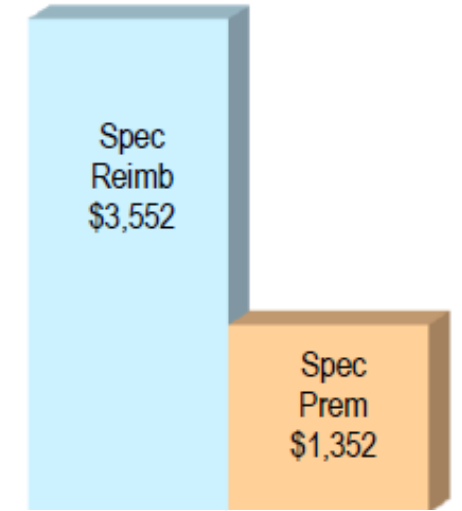
### Stats for Claimants with costs \$100,000+:

- <1% of plan participants incurred 35% of total plan costs
- Total claims paid increased by 39% from 2023 to 2024
- 12% increase in per member per month cost (*BCBS Annual Report*)

### High Cost Claimants over \$500k SSL\*

1	\$2,189,007
2	\$1,507,531
3	\$941,570
4	\$755,938
5	\$658,278

### SSL Performance (\$ ,000)



Paid (after pooling)	2021	2022	2023	2024
<b>\$100,000 +</b>	\$9,999,297	\$10,756,064	\$10,240,120	\$14,204,193
\$50,000 - \$99,999	\$7,016,052	\$7,360,685	\$5,412,135	\$5,433,213
\$25,000 - \$49,999	\$5,803,247	\$5,181,627	\$5,548,040	\$5,074,384
\$10,000 - \$24,999	\$6,285,055	\$6,873,909	\$7,598,994	\$7,105,700
\$2,500 - \$9,999	\$7,338,815	\$8,641,488	\$7,680,975	\$6,377,204
less than \$2,500	\$4,505,635	\$3,832,818	\$3,420,230	\$2,725,800
<b>total \$ amounts</b>	<b>\$40,948,102</b>	<b>\$42,646,591</b>	<b>\$39,900,495</b>	<b>\$40,920,493</b>
% Claims \$10,000+	71.1%	70.7%	72.2%	77.8%

Claimants	2021	2022	2023	2024	norm
<b>\$100,000 +</b>	49	60	53	65	73
\$50,000 - \$99,999	102	109	80	76	109
\$25,000 - \$49,999	170	150	154	145	196
\$10,000 - \$24,999	410	453	489	456	532
\$2,500 - \$9,999	1,491	1,742	1,557	1,310	1,310
Less than \$2,500	6,314	5,688	5,562	5,685	5,516
<b>total members</b>	<b>8536</b>	<b>8202</b>	<b>7895</b>	<b>7737</b>	<b>7,737</b>
% Claimants \$10,000+	8.6%	9.4%	9.8%	9.6%	11.8%

\* What is Specific Stop Loss (SSL) Insurance? – protects employers from a single plan members high medical claims that exceed a set dollar amount to limit the liability for the self-funded health plan. RRISD’s SSL is set at \$500,000.

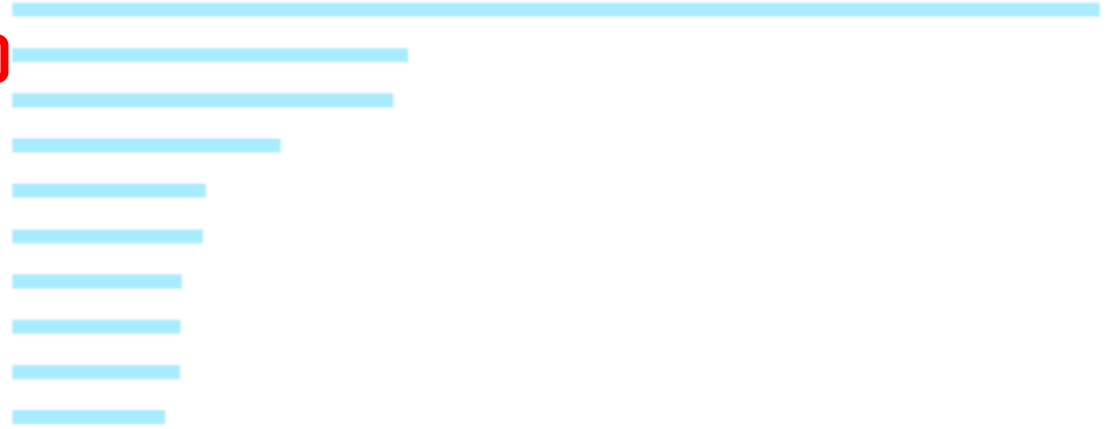
# Emergency Room Utilization

## 2024 Annual iCAF Report

January 2024 | December 2024

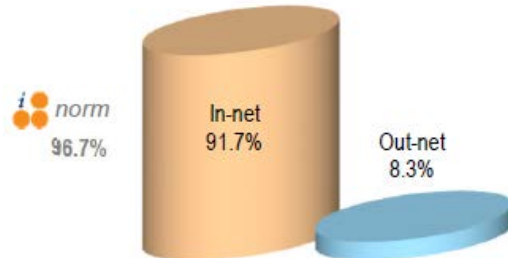
Average membership: 7,737

Service / Location	Gross claims cost				
	In-net	Out-net	Combined	pmpm	%
1 Drugs (Retail & Mail)	\$13,420,235	\$0	\$13,420,235	\$144.54	22.7%
2 Er - Facility / Physician / Diagnostic	\$1,973,623	\$2,910,064	\$4,883,687	\$52.60	8.3%
3 Infusions, Injections, Specialty Drugs	\$4,678,898	\$19,653	\$4,698,551	\$50.61	7.9%
4 Office Visit	\$3,304,468	\$9,450	\$3,313,918	\$35.69	5.6%
5 Outpatient Surgery	\$2,371,872	\$19,668	\$2,391,541	\$25.76	4.0%
6 Diagnostic, Lab & X-Ray - Office	\$2,303,344	\$46,755	\$2,350,099	\$25.31	4.0%
7 Inpatient Hospital - Icu	\$2,089,818	\$0	\$2,089,818	\$22.51	3.5%
8 Medical And Surgical Supplies	\$2,072,653	\$4,929	\$2,077,582	\$22.38	3.5%
9 Diagnostic, Lab & X-Ray - Outpatient	\$1,893,817	\$176,113	\$2,069,929	\$22.29	3.5%
10 Inpatient Hospital - Room And Board	\$1,888,873	\$1,239	\$1,890,113	\$20.36	3.2%



● Indicates out-of-network costs are greater than or equal to 10%

In-network vs. out-of-network Medical only



### Keep Calm & Carry On

# of ER visits	Members	per/1000 RR	per/1000 norm	Total ER Visits	Medical Gross Cost	% of Cost RR	% of Cost norm	Gross Cost per visit
6+	32	4.1	3.1	255	\$428,230	0.7%	0.7%	\$1,679
4-5	90	11.6	7.2	389	\$644,615	1.1%	0.7%	\$1,657
3	176	22.7	12.6	528	\$768,868	1.3%	0.8%	\$1,456
<b>3+ visit total</b>	<b>298</b>	<b>38.5</b>	<b>22.9</b>	<b>1,172</b>	<b>\$1,841,713</b>	<b>3.1%</b>	<b>2.2%</b>	<b>\$1,571</b>
1-2	1,692	218.7	187.5	2,088	\$3,041,974	5.1%	4.9%	\$1,457
<b>E/R totals</b>	<b>1,990</b>	<b>257.2</b>	<b>210.4</b>	<b>3,260</b>	<b>\$4,883,687</b>	<b>8.3%</b>	<b>7.1%</b>	<b>\$1,498</b>
<b>Total</b>	<b>7,737</b>				<b>\$59,147,213</b>			

## Local District Plan Benchmarks – Lowest Cost Plan

	RRISD HSA HMO	AISD* HSA	LISD Narrow Network	PfISD HSA Narrow Network	TRS HMO
Administrator	Blue Cross	Blue Cross	Healthcare Highways (HCH)	Healthcare Highways (HCH)	Blue Cross
Network	HMO Gatekeeper	Full PPO	St. David's & BSW	St. David's & BSW	HMO Gatekeeper
Out-of-Network Coverage	No	Yes	No	No	No
Deductible	\$3,500	\$1,800	\$5,000	\$6,000	\$2,500
Out-of-Pocket Max	\$6,500	\$5,400	\$7,500	\$7,500	\$8,050
PCP Office Visit	Ded/70%	Ded/80%	\$75 copay	Ded/70%	\$30 copay
Rx	Ded/70%	Ded/80%	\$10/\$35/ \$50/20%	Ded/70%	\$15/30%/50%/30% (ded applies to all but generic)
<b><u>EMPLOYEE CONTRIBUTIONS</u></b>					
Employee Only	\$0	\$0	\$10	\$40	Set by each district
Family	\$877	\$559	\$796	\$970	

\* Austin ISD no longer has salary banded contributions per their 2025 Benefits Guide.

# Projected Forecast (assumes no changes)

March 2025 iCAF Report

contract year	ees	plan cost	ee payroll deductions	district fund	district fund pepm	district cost	district cost pepm	surplus/ (deficit)
2024 Actual	5,284	\$44,395,096	\$10,762,246	\$29,545,798	\$466	\$33,696,621	\$531	(\$4,150,823)
2025	5,123	\$42,106,774	\$12,133,322	\$28,645,020	\$466	\$30,039,258	\$489	(\$1,394,238)
2026	5,124	\$44,491,997	\$12,133,322	\$28,653,408	\$466	\$32,424,487	\$527	(\$3,771,079)
2027	5,124	\$47,094,191	\$12,133,322	\$28,653,408	\$466	\$35,026,682	\$570	(\$6,373,274)
2028	5,124	\$49,856,703	\$12,133,322	\$28,653,408	\$466	\$37,789,193	\$615	(\$9,135,785)
2029	5,124	\$52,789,964	\$12,133,322	\$28,653,408	\$466	\$40,722,455	\$662	(\$12,069,047)

Trend Assumption: 5% medical, 8% pharmacy

**Appendix**

**6**

# Local Peer District Plan Benchmarks

Plan Options	RRISD		Local Peer Districts	
	Plan Description	Employee Cost	Plan Description	Employee Cost
Lowest Cost Plans	<ul style="list-style-type: none"> <li>Network options: HMO*</li> <li>HSA</li> </ul>	Single: \$0 Family: \$877	<ul style="list-style-type: none"> <li>Network options: HMO*, Narrow, or PPO</li> <li>All HSA plans except TRS</li> </ul>	Single: \$0 - \$40 Family: \$559 - \$970
Mid Level Plans	<ul style="list-style-type: none"> <li>Network options: HMO* &amp; PPO</li> <li>HSA &amp; Copay plans</li> </ul>	Single: \$50 & \$75 Family: \$1,013 & \$1,024	<ul style="list-style-type: none"> <li>Network options: Narrow, HMO* &amp; PPO</li> <li>HSA &amp; Copay plans</li> </ul>	Single: \$20 - \$130 Family: \$838-\$1,153
Highest Cost Plans	<ul style="list-style-type: none"> <li>Network option: PPO</li> <li>Copay plan</li> </ul>	Single: \$180 Family: \$1,277	<ul style="list-style-type: none"> <li>Network options: HMO* &amp; PPO</li> <li>HSA &amp; Copay plans</li> </ul>	Single: \$35-\$260 Family: \$964-\$1,604

\* HMO has Primary Care Physician gatekeeper requirement and no out-of-network coverage.

Local Peer District benchmarks include Austin ISD, Leander ISD, Pflugerville ISD and TRS.

## Local District Plan Benchmarks – Mid Plans

	RRISD HMO	RRISD HSA	LISD HSA	LISD ACO	LISD HSA	PfISD ACO	PfISD HMO	TRS HSA	TRS HMO
Administrator	Blue Cross	Blue Cross	Blue Cross	Healthcare Highways	Blue Cross	Healthcare Highways	Blue Cross	Blue Cross	Blue Cross
Network	HMO Gatekeeper	Full PPO	Full PPO	St. David's & BSW	Full PPO	St. David & BSW	HMO	Full PPO	HMO Gatekeeper
Out-of-Network Coverage	No	Yes	Yes	No	Yes	No	Yes	Yes	No
Deductible	\$3,000	\$3,500	\$3,300	\$1,000	\$1,650	\$3,500	\$4,000	\$3,200	\$1,200
Out-of-Pocket Max	\$7,150	\$6,500	\$6,600	\$3,000	\$6,050	\$6,000	\$8,500	\$8,050	\$6,900
PCP Office Visit	\$35 copay	Ded/70%	Ded/80%	\$50 copay	Ded/80%	\$20 copay	\$40 copay	Ded/70%	\$15 copay
Rx	\$15/35%/40%/20% to \$250	Ded/70%	Ded/80%	\$10/\$35/\$50/20%	Ded/80%	\$15 \$40/\$65/ 10% to \$2,500	\$15/\$50/\$75/10% to \$2,500	Ded, then 20%/25%/50%/20%	\$15/30%/50%/ 30% (ded applies to all but generic)
<b>EMPLOYEE CONTRIBUTIONS</b>									
Employee Only	\$50	\$75	\$21	\$45	\$73	\$130	\$89	Set by each district	Set by each district
Family	\$1,013	\$1,024	\$876	\$989	\$1,032	\$1,153	\$1,035		

## Local District Plan Benchmarks – Highest Cost Plans

	RRISD PPO	AISSD HMO	LISD PPO	PfISD HMO	TRS PPO* (Grandfathered)	TRS HMO
Administrator	Blue Cross	Blue Cross	Blue Cross	Blue Cross	Blue Cross	Blue Cross
Network	Full PPO	HMO Gatekeeper	Full PPO	HMO Gatekeeper	Full PPO	HMO Gatekeeper
Out-of-Network Coverage	Yes	No	Yes	No	Yes	No
Deductible	\$2,500	\$1,600	\$1,500	\$3,000	\$1,000	\$950
Out-of-Pocket Max	\$7,000	\$4,500	\$4,500	\$8,500	\$7,900	\$7,450
PCP Office Visit	\$35 copay	\$35 copay	\$50 copay	\$35 copay	\$30 copay	\$20 copay
Rx	\$15/35%/40%/20% to \$250	\$10/\$55/\$75	\$10/\$35/\$50/20%	\$15/\$40/\$65/10% to \$2,500	\$20/25%/50%/30% to \$900 (\$200 ded applies to all but generic)	\$5/30%/50%/55% (\$150 ded applies to all but generic)
<b><u>EMPLOYEE CONTRIBUTIONS</u></b>						
Employee Only	\$180	\$35	\$199	\$260	Set by each district	Set by each district
Family	\$1,277	\$953	\$1,604	\$1,400		

\* TRS ActiveCare 2 is not accepting new enrollees. New enrollees must select a HMO gatekeeper copay plan or HSA plan with full network coverage.

**Your future is limitless.<sup>SM</sup>**

This document is not intended to be taken as advice regarding any individual situation and should not be relied upon as such. Marsh & McLennan Agency, LLC shall have no obligation to update this publication and shall have no liability to you or any other party arising out of this publication or any matter contained herein. Any statements concerning actuarial, tax, accounting or legal matters are based solely on our experience as consultants and are not to be relied upon as actuarial, accounting, tax or legal advice, for which you should consult your own professional advisors. Any modeling analytics or projections are subject to inherent uncertainty and the analysis could be materially affected if any underlying assumptions, conditions, information or factors are inaccurate or incomplete or should change. MarshMMA.com



**ROUND ROCK**  
INDEPENDENT SCHOOL DISTRICT

# **FY 2025-2026 PRELIMINARY BUDGET UPDATE**

**May 8, 2025**



**ROUND ROCK**  
INDEPENDENT SCHOOL DISTRICT

# **MAINTENANCE AND OPERATIONS (M&O)**



**ROUND ROCK**  
INDEPENDENT SCHOOL DISTRICT

# **BUDGETARY GOALS**

# GOALS AND OBJECTIVES

- Focus on Instruction
- Maintain Competitive Compensation
- Focus on School Safety
- Maximize the Use of Grant Funding
- Reduce Expenditures
- Minimize Reductions in the Classroom

## **BALANCED BUDGET**



**ROUND ROCK**  
INDEPENDENT SCHOOL DISTRICT

# LEGISLATIVE FACTORS

# HB2 - PUBLIC EDUCATION FINANCE - POTENTIAL FACTORS

- Basic Allotment Increase
- Change from 30% to 40% of total revenue increase shall be used for compensation
- 75% of the 40% increase shall be used for compensation increase for teachers
- Fine Arts Allotment Added
- State Aid for Homestead Exemption Calculation Change
- RRISD Projected Increase - \$21.3M

# OTHER LEGISLATIVE FACTORS

➤ **Senate Bill 260 – School Safety Allotment**

Increase Allotment from \$10 to \$28 per ADA

Increase Campus Allotment from \$15,000 to \$30,000

RRISD Projected Increase - \$1.3M

➤ **Senate Bill 568 - Special Education Allotment**

Change from a placement-based system to a service intensity-based system

Service Intensity Tier of Support

Service Group Funding Level

Increase Transportation mileage reimbursement rate

RRISD Projected Increase - \$8.0M



# OTHER LEGISLATIVE FACTORS

➤ **House Bill 500 – Supplemental Appropriations**

School Health and Related Services

Offset lost revenue to school districts for changes at the federal level

Total Appropriation - \$935M

RRISD Loss - \$8.0M



**ROUND ROCK**  
INDEPENDENT SCHOOL DISTRICT

# **BUDGET ASSUMPTIONS**

# ASSUMPTIONS

- Student Enrollment - 47,100
- Average Daily Attendance - 92% including PreK
- Property Value Increase – 2%
- Basic Allotment - \$6,160 or \$6,555
- Hold Harmless Exemption - \$100,000



**ROUND ROCK**  
INDEPENDENT SCHOOL DISTRICT

# **PRELIMINARY BUDGET PROJECTION SCENARIOS**

# MAINTENANCE & OPERATIONS FUND BUDGET

PRELIMINARY DRAFT  
 GENERAL FUND - BUDGET COMPARISON  
 2025-26 SCENARIOS  
 \$000s

MCR plus 8 Golden Pennies  
 Enrollment: (ADA BLENDED - 92%)  
 Basic Allotment  
 Property Value Growth

## REVENUE

	\$0.7101	\$0.7101	\$0.7101	\$0.7101
	47,100	47,100	47,100	47,100
	\$ 6,160	\$ 6,160	\$ 6,555	\$ 6,555
	2%	2%	2%	2%
	<b>Original Projection without 2024-2025 Reductions</b>	<b>Original Projection with 2024-2025 Reductions</b>	<b>HB2 - \$21.3M inc; Does not include Safety Allotment or SPED increase</b>	<b>HB2 - 21.3M inc; includes Safety Allotment; excludes SPED increase</b>
Current Year Tax Collections - MCR	\$ 343,810	\$ 343,810	\$ 343,810	\$ 343,810
Current Year Tax Collections - Golden Pennies	\$ 43,652	\$ 43,652	\$ 43,652	\$ 43,652
Prior Year Tax Collections	-	-	-	-
Penalties and Interest	850	850	850	850
Investment Income	2,500	2,500	2,500	2,500
Other Local Revenue	10,590	10,590	10,590	10,590
Indirect Cost Revenue	1,000	1,000	1,000	1,000
State Revenue	32,593	32,593	44,143	45,428
School Health and Related Services (SHARS)				
Federal Revenue	450	450	450	450
Teacher Retirement System - On-Behalf	25,586	25,586	25,586	25,586
<b>Total Revenues</b>	<b>\$ 461,031</b>	<b>\$ 461,031</b>	<b>\$ 472,581</b>	<b>\$ 473,866</b>

# MAINTENANCE & OPERATIONS FUND BUDGET

PRELIMINARY DRAFT  
 GENERAL FUND - BUDGET COMPARISON  
 2025-26 SCENARIOS  
 \$000s

MCR plus 8 Golden Pennies  
 Enrollment: (ADA BLENDED - 92%)  
 Basic Allotment  
 Property Value Growth

<b>\$0.7101</b>
<b>47,100</b>
<b>\$ 6,160</b>
<b>2%</b>
<b>Original Projection without 2024-2025 Reductions</b>

<b>\$0.7101</b>
<b>47,100</b>
<b>\$ 6,160</b>
<b>2%</b>
<b>Original Projection with 2024-2025 Reductions</b>

<b>\$0.7101</b>
<b>47,100</b>
<b>\$ 6,555</b>
<b>2%</b>
<b>HB2 - \$21.3M inc; Does not include Safety Allotment or SPED increase</b>

<b>\$0.7101</b>
<b>47,100</b>
<b>\$ 6,555</b>
<b>2%</b>
<b>HB2 - 21.3M inc; includes Safety Allotment; excludes SPED increase</b>

## EXPENSES

### Salaries & Benefits:

Salaries & Benefits - Last Year	\$ 388,949	\$ 388,949	\$ 388,949	\$ 388,949
Changes from Last Year				
Compensation Increases (3.5%,2.5%,2%,2% & 1.5%)			9,323	9,323
Compensation Adjustments				
Position Decreases		(4,555)	(4,555)	(4,555)
New Positions:				
Emerging Bilingual (7-Education Assistants)		245	245	245
SPED (16-Teachers; 24-Education Assistants)		2,175	2,175	2,175
Dyxllexia		825	825	825
Teacher Retirement System - On-Behalf	25,586	25,586	25,586	25,586
<b>Total Salaries &amp; Benefits</b>	<b>\$ 414,535</b>	<b>\$ 413,226</b>	<b>\$ 422,549</b>	<b>\$ 422,549</b>

# MAINTENANCE & OPERATIONS FUND BUDGET

PRELIMINARY DRAFT  
 GENERAL FUND - BUDGET COMPARISON  
 2025-26 SCENARIOS  
 \$000s

MCR plus 8 Golden Pennies  
 Enrollment: (ADA BLENDED - 92%)

Basic Allotment  
 Property Value Growth

	\$0.7101	\$0.7101	\$0.7101	\$0.7101
	47,100	47,100	47,100	47,100
	\$ 6,160	\$ 6,160	\$ 6,555	\$ 6,555
	2%	2%	2%	2%
	Original Projection without 2024-2025 Reductions	Original Projection with 2024-2025 Reductions	HB2 - \$21.3M inc; Does not include Safety Allotment or SPED increase	HB2 - 21.3M inc; includes Safety Allotment; excludes SPED increase
	5,926	5,926	5,926	5,926
	48,825	48,825	48,825	48,825
		(5,183)	(5,183)	(5,183)
		1,905	1,905	1,905
	500	500	500	500
	(2,100)	(2,100)	(2,100)	(2,100)
			226	226
<b>Total Allocations</b>	<b>\$ 53,151</b>	<b>\$ 49,873</b>	<b>\$ 50,099</b>	<b>\$ 50,099</b>
Recapture	9,850	9,850	-	-
<b>Total Expenses</b>	<b>\$ 477,536</b>	<b>\$ 472,949</b>	<b>\$ 472,648</b>	<b>\$ 472,648</b>

**Allocations:**

Campus and Library	
Redirects/Reductions	
Departments	
Redirects/Reductions	
Program Increase	
Tier School Support	
Food Service	
CTE Need to Increase Spending	
Strategic Plan	
<b>Total Allocations</b>	
Recapture	
<b>Total Expenses</b>	

# MAINTENANCE & OPERATIONS FUND BUDGET

PRELIMINARY DRAFT  
GENERAL FUND - BUDGET COMPARISON  
2025-26 SCENARIOS  
\$000s

MCR plus 8 Golden Pennies  
Enrollment: (ADA BLENDED - 92%)  
Basic Allotment  
Property Value Growth

	\$0.7101	\$0.7101	\$0.7101	\$0.7101
	47,100	47,100	47,100	47,100
	\$ 6,160	\$ 6,160	\$ 6,555	\$ 6,555
	2%	2%	2%	2%
	Original Projection without 2024-2025 Reductions	Original Projection with 2024-2025 Reductions	HB2 - \$21.3M inc; Does not include Safety Allotment or SPED increase	HB2 - 21.3M inc; includes Safety Allotment; excludes SPED increase
<b>Total Revenues</b>	\$ 461,031	\$ 461,031	\$ 472,581	\$ 473,866
<b>Total Expenses</b>	\$ 477,536	\$ 472,949	\$ 472,648	\$ 472,648
<b>Surplus / (Deficit)</b>	\$ (16,505)	\$ (11,918)	\$ (67)	\$ 1,219



**ROUND ROCK**  
INDEPENDENT SCHOOL DISTRICT

# NEXT STEPS

# NEXT STEPS

- Develop the 2025-2026 Preliminary Budget scenarios - Updated
- Hold Budget Workshop with BOT – **May 8, 2025**
- Adopt 2025-2026 Compensation Plan – **May 15, 2025**
- Present Superintendent’s 2025-2026 Proposed Budget – **May 15, 2025**
- Hold Budget Workshop with BOT – **May 29, 2025**
- Adopt 2025-2026 Proposed Budget – **June 17, 2025**



# QUESTIONS



**ROUND ROCK**  
INDEPENDENT SCHOOL DISTRICT